

atomic MID CENTURY MARVELS ranch



**Mod Travel Inspo:
Mid Century Getaways**

**Outdoor Oasis:
Lessons from
A Desert Gem**



copeland

FURNITURE

copelandfurniture.com

Made in America
Made to Order
Made to Last



Contents summer 2021



FEATURES

28 Desert Sanctuary

Tucked into a boulder-strewn canyon in the California High Desert, this historic property has been reimagined as a restful retreat, paying homage to both mid century style and the town's Old West heritage.

38 Form, Function and Style

A couple patiently furnished their Wexler and Harrison home for vibrant results. See the inspirational outcome that perfectly encapsulates everything they adore about Mid Century Modern design.

50 A Garden in the Atrium

Learn how these homeowners embraced the original features of their 1976 Sacramento home to create a meaningful and unique dry garden—inside and out.

60 Mid Mod Getaways

These five luxury and boutique hotels offer a Mid Century Modern home away from home, whether you're looking for an urban adventure or a rustic retreat.

64 Modern Mid Century

We're introducing our year-long series documenting a new build inspired by old mid century style.

70 In an Office Far, Far Away...

Discover how one mid mod collector and dealer transformed his office into a place for some of his favorite Space Age collectibles.

DEPARTMENTS

- 8 Editor's Letter
- 10 Web News
- 14 Cool Stuff
- 18 Period Picks
- 22 Atomic Kitchens
- 78 Advertisers
- 80 Resources
- 82 Last Look



cover

Cover Photography by Kevin McDermott

Cover Design by Gabby Oh



JOYBIRD

Create a space that brings you joy

With 37,000+ ways to customize your furniture, it's never been easier (or more fun!) to bring your dream room to life.





Soto Chair | \$1,135
in Faithful Olive



Gert Coffee Table | \$636



Collins Chair | \$1,279
in Shearing Whisper



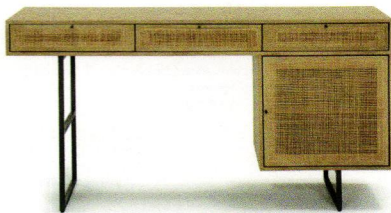
Hughes Swivel Chair | \$1,481
in Lucky Turquoise



Hughes Bed | \$2,459
in Royale Evergreen



Chelsea Sofa | \$2,887
in Royale Blush



Florence Desk | \$1,850



Toscana Dining Set | \$2,850
in Taylor Felt Grey



Eliot Leather Sectional with Bumper | \$5,850
in Santiago Camel



Eliot Bench | \$1,827
in Royale Forest

25% OFF*

Use Promo Code
AR25
Until: 10.06.2021

Limited Lifetime Warranty | 90-Day Returns | Buy Now, Decide Later

Don't want to wait?

Our Quick Ship items ship to you in as little as 14 days from placing your order.

[Joybird.com/instock](https://www.joybird.com/instock)

*The 25% discount is a limited time offer valid until 10.06.2021 and it cannot be combined with other offers, discounts, or prior purchases. Returns within 14 days of delivery are free for all orders shipped to the contiguous United States. Return undamaged furniture within 365 days of receiving it for a full refund. Financing options as low as 0% APR available to qualified applicants. Quick Ship items typically ship within 3-5 business days of order. Date of delivery will vary depending on your location.

Joybird.com | 855.855.9784

editor's letter

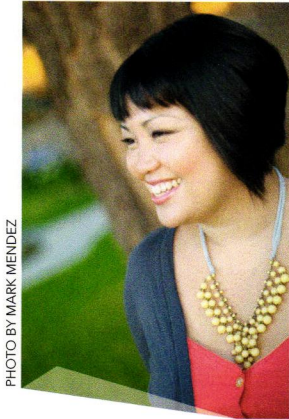


PHOTO BY MARK MENDEZ

PRESS RESTART

RAISE YOUR HAND IF YOU FEEL LIKE SUMMERTIME IS THE PERFECT TIME FOR A RESET. Maybe it's because we've all held onto that school's-out-for-summer mentality that still makes the arrival of summer feel a little extra thrilling. It's vacation season; it's beach season; it's reap-the-rewards-of-our-hard-work season.

At home this means we finally jump in the pool that for many of us has been merely lawn ornamentation for months. Let's use that vintage barware that's been boxed away. As we and the rest of the world emerge a bit more into a savvy socially distanced lifestyle, let's take stock of how to enjoy our homes with a breath of fresh air and optimism.

This issue is packed with gorgeous mod homes built for easy living and joie de vivre—from a desert cabin with cool vintage style to a retro dream home full of vibrant color and period finds. Speaking of things being built, we're also embarking on an exciting journey. We're watching a custom mid century build take place, where we'll follow along for a year and see how architectural and interior design choices come together to infuse a new home with a mid mod essence. I hope you get inspired to save some ideas for your future home improvement and renovation plans. But for now, kick back on the patio and simply enjoy.

Jackie Torres

Get connected!

Email: editor@atomic-ranch.com • Online: atomic-ranch.com • [@theatomicranch](https://www.instagram.com/theatomicranch)

atomic ranch

EDITORIAL

Brand Leader: Jackie Torres
Senior Editors: Lindsay Jarvis, Jolene Nolte
Managing Editor: Anne Brink
Digital Brand Manager: Kris Christensen
Web Editor: Jolene Nolte
Content Specialist: Kristin Dowling

DESIGN

Design Director: Gabby Oh

CONTRIBUTORS

Rabekah Henderson, Devlin Smith, Kathryn Drury Wagner

CONTRIBUTING PHOTOGRAPHERS

Rex Bonomelli, Daniel Blue Photography, Peter Heuer, Kevin McDermott, Chad Mellon

ADVERTISING

Sherrie Norris - snorris@engaged.media
Julie Hale - jhale@engaged.media
Suzy Bailey - suzy.bailey@engaged.media
Sebastian Tirkey - Advertising Traffic Coordinator

OPERATIONS

Manish Kumar Mishra: Operations Manager
Surajpal Singh Bisht: Prepress Manager
Chandan Pandey: Production & Newsstand Circulation Analyst
Alex Mendoza: Administrative Assistant

EDITORIAL, PRODUCTION & SALES OFFICE

17900 Sky Park Circle #220, Irvine, CA 92614
www.atomic-ranch.com
(714) 939-9991, Fax (800) 249-7761

ATOMIC RANCH (ISSN 1547-3902) Issue 70, Summer 2021. Atomic Ranch is published 4 times per year (Spring, Summer, Renovation Guide, Fall, Winter, Design Issue) by Engaged Media LLC, 17900 Sky Park Circle #220, Irvine, CA 92614. Periodical postage paid at Irvine, CA, and additional mailing offices. **POSTMASTER:** send address changes to Atomic Ranch c/o Engaged Media LLC, Cenveo, 101 Workman Ct., Eureka, MO 63025. © 2021 by Engaged Media LLC. All rights reserved. Reproduction of any material from this issue in whole or in part is strictly prohibited. GST #R55050365RT001 Canada Post: Publications Mail Agreement #40612608. Return undeliverable Canadian addresses to: PITNEY BOWES, INC., P.O. Box 25542, London, ON N6C 6B2.

CUSTOMER SERVICE

ENGAGED MEDIA LLC
17900 Sky Park Circle #220
Irvine, CA 92614

SUBSCRIPTIONS, ADDRESS CHANGES,
RENEWALS, MISSING OR DAMAGED COPIES
(800) 764-6278

(239) 653-0225 Foreign Inquiries
subscriptions@engagedmediainc.com
customerservice@engagedmediainc.com

BACK ISSUES

www.engagedlifestyle.com

BOOKS, MERCHANDISE, REPRINTS
(800) 764-6278, Foreign (239) 653-0225

LETTERS TO THE EDITOR, NEW PRODUCTS OR TO
CONTRIBUTE A STORY OR PHOTO
editor@atomic-ranch.com

SUBSCRIPTION RATES

\$29.95/1 year, \$52.95/2 years. Foreign, \$51.95 per year, \$96.95 per 2 years payable in US funds.
Atomic Ranch single copy price is \$7.99;
Renovation Guide and Design Issue price is \$9.99.
Please allow 6 to 8 weeks for new subscriptions to begin.

ENGAGED® MEDIA LLC ENGAGED MEDIA LLC

Prashant Upadhyaya: CEO

Sonal Mehta: COO

Erin Reister: Senior Vice President Sales

Erin Masercola: Director of Content Operations

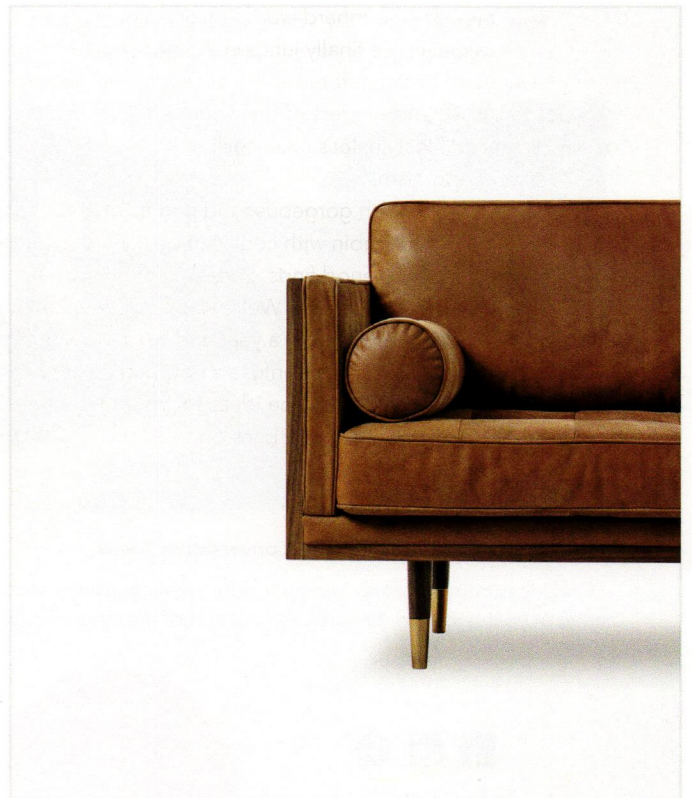
Terry Rollman: Audience Development Director

Carrie Rubalcaba: Human Resources

Jackie Torres: Content Director

This magazine is purchased by the buyer with the understanding that information presented is from various sources from which there can be no warranty or responsibility by Engaged Media as to the legality, completeness or technical accuracy.

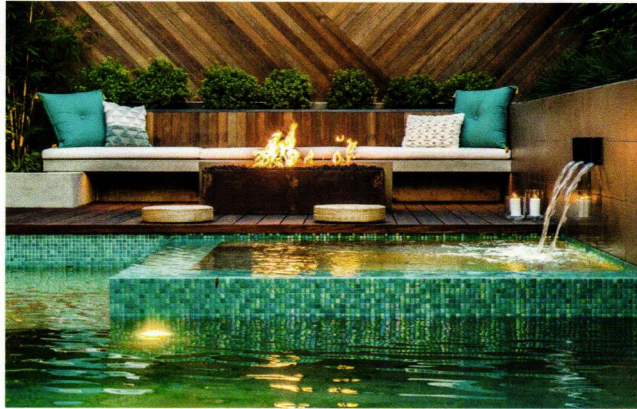
GST #R55050365RT001
Canada Post: Publications Mail Agreement #40612608
Return undeliverable Canadian addresses to:
PITNEY BOWES, INC.
P.O. Box 25542
London, ON N6C 6B2



Keep tabs on us

Find out more about taking it outside at atomic-ranch.com.

DESIGN AND CONSTRUCTION BY FALLING WATERS LANDSCAPE, ENCINITAS CA



A Backyard to Swoon Over

This poolside lounge area has all the elements of a summer hangout spot you'd never want to leave. It's located in Cardiff-by-the-Sea, just outside Encinitas, California; designer Ryan Prange says, "The vision was Bali meets Cardiff." Mission accomplished. Can we come over?

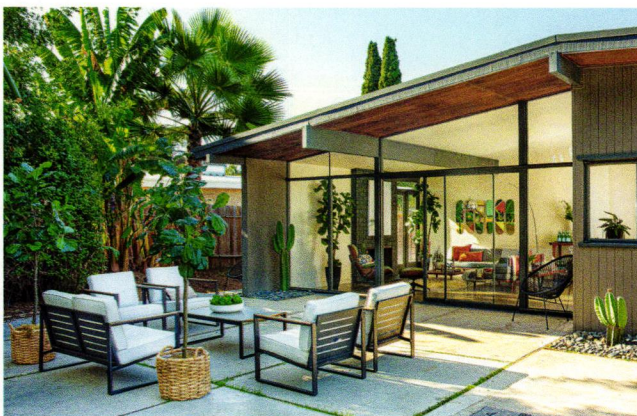


PHOTO BY ERIN BIRD

Mile High and Mid Mod

These homeowners carefully brought their 1955 Franklin L. Burns Construction home in Denver's Harvey Park neighborhood back to its MCM roots. Stay tuned to see more of their home—including a vibrant bathroom and an outdoor breeze block wall.

PHOTO BY BRET GUM



Creating Outdoor Conversation Areas

Find ideas from simple to aspirational for creating inviting seating areas in your backyard, bringing the comfort of the indoors outside.

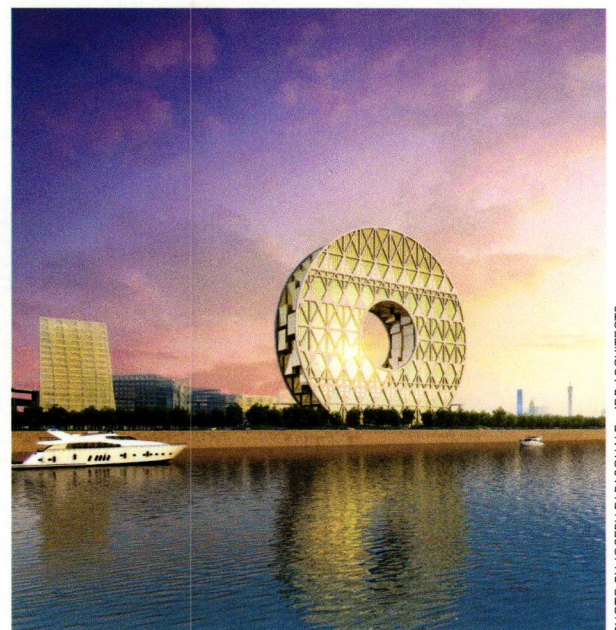


PHOTO BY JOSEPH DI PASQUALE - JDP ARCHITECTS

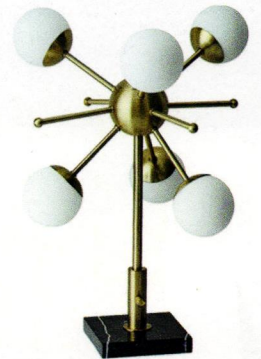
Retro Road Trip: Guangzhou Circle

When Italian architect Joseph di Pasquale designed this iconic building for the Guangdong province of China, his aim was to integrate Eastern elements. Learn more about the Guangzhou Circle, the result that stands 33 floors high.



Follow us online on
**Facebook, Pinterest and
Instagram** daily!

LOOK FOR THIS
THROUGHOUT THE
ISSUE TO SEE WHAT
EXTRA CONTENT
YOU'LL FIND
ONLINE.



Shop H3K Home
from the comfort
of your home!

www.h3khome.com

Use coupon code **Atomic10**
and receive 10% off your online order.

H3K HOME

MAC GEORGE ART PRINTS



Please visit www.macartprints.com
or visit my Etsy shop at www.Etsy.com/shop/MacGeorgeArtPrints

Viewrail FLIGHT floating stairs say a lot about your love of openness and elegance. From design to installation, we make it easy to make your statement.

FREE Design Starter Kit

Includes material samples and our *Viewrail FLIGHT Buyer's Guide* to help you get started.

Order yours today by visiting
www.viewrail.com/AtomicRanch



VIEWRAIL

Delivering the Future of Stairs & Railing

coolstuff

Poolside

Greet summer in mid mod style with these finds for your backyard and beyond.



Business & Pleasure Co., premium beach umbrella—vintage yellow stripe, \$299. (866) 896-3804 or amara.com.

Georges Briard yellow-striped collins glasses, \$150. (703) 224-4687 or thehourshop.com.



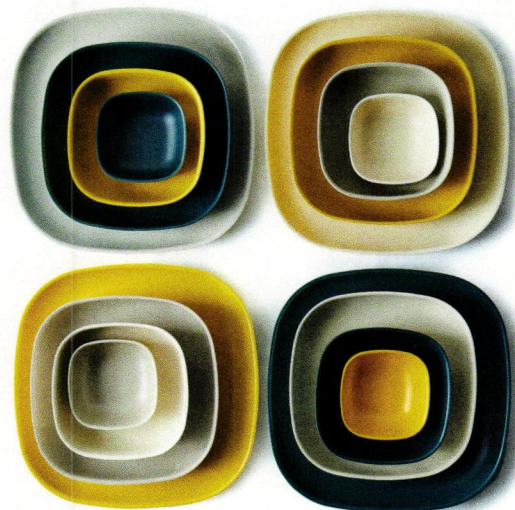
Retro bullet planter by Hip Haven in Sunny Yellow, \$175. (512) 462-4755 or hiphaven.com.



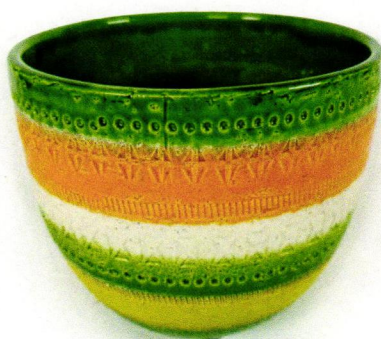
Chilewich skinny-stripe shag indoor/outdoor mat, \$185. (866) 764-0888 or citenyc.com.



Recycled Bamboo Rainbow place setting, \$40. Visit food52.com.



Bitossi: Aldo Londi model Sahara plateel ceramic '60s flower pot, \$236. Visit retroxl.com or retroxl.nl; also on [Etsy](http://Etsy.com).



Blomus Design: Viento modern pinwheel, \$16.66. (800) 420-4137 or nova68.com.





Rancho Relaxo Mid Century Modern birdhouse,
\$275. (832) 499-7127 or
bluedominodesigns.com.



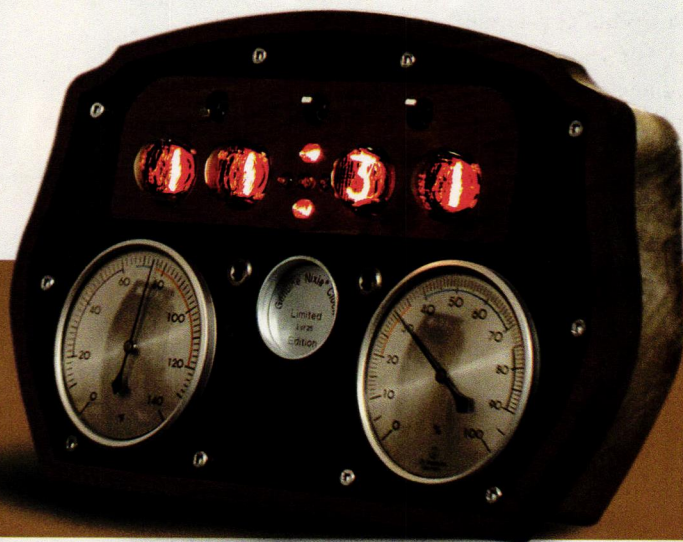
Mid Century Modern Sun & Rainbow beach towel,
\$39.99. Visit society6.com.



Time Warp INVENTIONS

Genuine Nixie™ Tube Clock

Limited Edition



- ✓ Hand made artisan clock made with genuine vintage Nixie™ tubes
- ✓ Precision quartz timebase keeps time when power goes out
- ✓ Nixies display time and date
- ✓ Temperature and Humidity gauges

“ The nixieclock is not only an excellent chronometer keeping precise time over the nearly two months we've had it, but a stunning piece of artwork. With its authentic, 50+ year old nixie tubes, it evokes a vibrant, pre-digital period that surprises and delights all who see it. It has quickly become a most treasured piece in our home.

Bill and Mary Proskow

www.timewarpinventions.com



BLACKWELL  WOODWORKS



HANDMADE CLOCKS AND DECOR MADE ENTIRELY FROM UP-CYCLED GUITAR SCRAPS!

BLACKWELLWOODWORKS.COM

Custom HOME PORTRAITS



We all love the places we call home. We choose the colors, the furnishings, and the artwork that make our homes unique expressions of ourselves.

Let's work together to create a one-of-a-kind illustration highlighting what you love about your home!

Get to know your home in a whole new way.



Check out how I worked with the homeowners to transform their 1950's ranch - at visiblesolutionsbychris.com

CHRISTIAN MUSSELMAN
Illustration

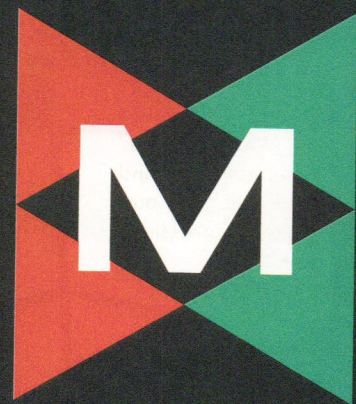
christianmusselman.com

we make **mid-century dreams** come true.



Every day the **Mid-Century Homes Team** obsesses about finding the coolest mid-century homes in the nation's most livable city. Scenic **Boise, Idaho** is home to over 11,000 mid-century gems at attainable prices. With top-shelf customer service and a deep expertise, this Dream Team is ready to show off the best of Boise:

MID-CENTURYHOMES.COM



mid • century
homes

by Anthology

periodpicks



1



2



3



4



5



6



7



8



9

Seating Al Fresco

These outdoor dining chairs will help make your backyard or patio more hospitable.

1. **Panton chair**, \$410. (866) 842-6209 or ylighting.com.
2. **Caya Mondo black dining armchair**, \$270. (866) 746-3455 or article.com.
3. **Verda patio dining chair with cushion (set of 4)**, \$899. (844) 860-3709 or allmodern.com.
4. **LeisureMod Devon Modern Flower Design outdoor aluminum dining armchair**. For pricing, call (866) 308-0938 or visit leisuremod.com.
5. **Hee dining chair**, \$195. (833) 849-3025 or us.hay.com.
6. **Grinda armchair**, \$800. (888) 605-3829 or lumens.com.
7. **Medan Graphite outdoor lounge chair**, \$840. (866) 746-3455 or article.com.
8. **Concha chair**, \$450. (888) 605-3829 or lumens.com.
9. **Dot Graphite dining chair in Tanga Orange**, \$210. (866) 746-3455 or article.com.

WHAT'S
THE
TIME?



Ask
the
bird.



Tiki Cuckoo Clock -
a Shag Store exclusive



Palm Springs • shagstore.com

WELCOME TO YOUR NEW HOME FOR MODERN LIVING

KARDIEL MODERN HOME

CURIOUS ABOUT WHAT SIZE SOFA TO BUY OR HOW TO STYLE YOUR CREDENZA?

Interested in mixing pieces, patterns and styles but in need of ideas? Welcome to Kardiel Modern Home, your new home for modern living. In each issue, you'll find fresh and fun design ideas, inspiration, advice, products and services for your modern lifestyle.

AN INTRODUCTORY
SUBSCRIPTION OFFER
EXCLUSIVELY FOR
ATOMIC RANCH
READERS

PAY JUST \$15.95
for one year (four issues)



YES! Sign me up for a subscription to *Kardiel Modern Home* for **\$15.95**

Payment Method Check Enclosed Credit Card Money Order Bill Me

Payment Through Credit Card Visa MC AMEX Discover Name On Credit Card _____

Credit Card Number Expiration Date ____/____/____

Subscriber Name _____

Address _____

Phone (____) _____ - _____ Email _____

Signature _____ Date ____/____/____

Or call **800-764-6278** to order your subscription. Allow 6-8 weeks for delivery of first issue. Outside U.S., add \$43 per year for postage. Payment in U.S. funds only.

Scan this QR code to
subscribe online.



Maximize Your Outdoor Connection




Mill Valley Residence • NanaWall Folding Glass Wall • Architect: Diego Pacheco Design • Photography: Paul Dyer

NanaWall Opening Glass Walls

Replace traditional sliding walls with a wide opening NanaWall that maximizes the outside connection.

 Wind & Water Resistant

 Energy Efficient

 Highly Secure

 Easy Operation & Durable

Explore our opening glass wall product families:



Folding



Sliding



Frameless



Minimal

Showrooms Nationwide
Visit NanaWall.com
800 873 5673
inquiries@nanawall.com

NanaWall
Boundaries **Unbound**[®]

atomickitchens

BLANK SLATE

After its original kitchen was lost to a 1990s makeover, this home is refreshed with the addition of a mid century-inspired kitchen.

By Devlin Smith

Photography by Hetler Photography

Design by Aletha VanderMaas

THIS KITCHEN WAS REBUILT FROM SCRATCH WITH CUSTOM CABINETRY
FEATURING ANGLED-BACK UPPERS PROVIDING THE AESTHETIC BASE.

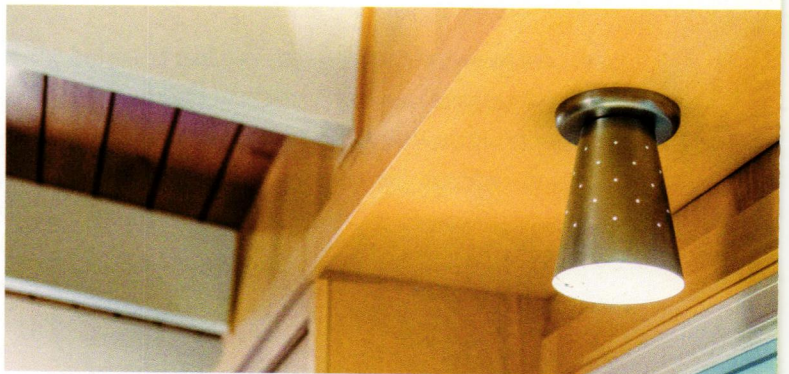


FOR MORE ON THIS
KITCHEN, VISIT
[ATOMIC-RANCH.COM](http://atomic-ranch.com).



ABOVE: FORMICA LAMINATE COUNTERS IN DOGBONE WHITE WERE SELECTED TO COMPLEMENT THE KITCHEN'S GRAY FLOORS AND BRING EXTRA BRIGHTNESS TO THE SMALL SPACE.

BELOW: DESIGNER ALETHA VANDERMAAS SELECTED A MIX OF VINTAGE-STYLE LIGHTING THAT FEELS ORIGINAL TO THE 1950s HOME.



To lovers of mid century design and style,

these words from designer Aletha VanderMaas about the kitchen of the 1950 ranch her firm was brought in to restore are devastating to hear: "Sadly, nothing original was left for us to work from."

Without any original design elements or features to work from, Aletha, designer and curator with True Home Restorations in Grand Haven, Michigan, found inspiration in her personal archives for the kitchen project. "I took inspiration from original mid century home photos I've collected over the years," she says. "The number-one detail that I admired is the angled-back upper cabinets. This is the first and only kitchen I've worked these into, but they are my favorite element and add a lot of style to this petite kitchen."

With features including sliding doors and rounded corner shelves, the custom cabinetry returned a mid century sensibility to the space. "We selected mid century-appropriate slab doors for all the cabinets," Aletha says. "We landed on retro-inspired pulls from Rejuvenation and retro-inspired laminate. We went with a very simple glass backsplash in an oversized rectangle, bond-set. The light fixtures and cabinet pulls really drive home the mid century style."

The light wood tone was selected for the cabinets to complement the gray flooring the homeowner selected and the original wood ceilings. Along with the architecture of the angled-back upper cabinets, the light color palette helps make the small kitchen space feel larger and more open.

/REAL HOME 101/

TYPE OF HOME: Wide-gable ranch

ARCHITECT: Michael Koteles

BACKGROUND: This 1950 single-story home is believed to have been designed by the architect for his own family. Built into a hill, the home has a walkout lower level. The kitchen was given a contemporary update by a previous owner in the 1990s and retained no original features.

COLOR SCHEME: Gray flooring and countertops and pale wood cabinets are paired with accessories in vibrant mid century shades of orange, aqua and yellow.

INNOVATIVE IDEA: The small space feels grander thanks to the custom-angled upper cabinets that merge with original beam ceilings.



design MUST-HAVES:

- Custom cabinetry in MCM shapes
- Light color scheme to help open the small space
- Mix-and-match vintage-inspired light fixtures

WHAT MAKES IT MCM?

- Low-profile appliances
- Accessories adding pops of color in modern hues
- Easy flow between the kitchen and the rest of the home

TOP: PLAIN, LOW-PROFILE APPLIANCES WERE SELECTED TO FIT THE MID CENTURY ACCESSORIES AND THE LIMITED SPACE IN THE KITCHEN.

BELOW: DESIGNER ALETHA VANDERMAAS PREFERS LIMITED ACCESSORIES IN A KITCHEN, LIKE A BRIGHTLY COLORED TEA KETTLE, SALT AND PEPPER SHAKERS OR PLANT POTS.



KEEPING IT LIGHT

"We decided on a light-tone wood to keep the space open and not too visually heavy," Aletha notes. "The laminate countertops are ivory and gray, and that set the tone for the rest of the neutral kitchen. We added a couple of pops of mid century colors (orange, aqua, yellow) with easy-to-swap accents."

Appliances were selected to fit the mid century aesthetic and not overwhelm the small space and also to show some home state pride. "We decided on Michigan-based Whirlpool for appliances," Aletha says. "I designed the space using the plainest and most low-profile appliances they offered at the time. Based on the layout we decided on, we ended up with a double oven (the upper portion is a microwave), cooktop and fridge."

Lighting was another element that helped bring the mid century back into this mid century home.

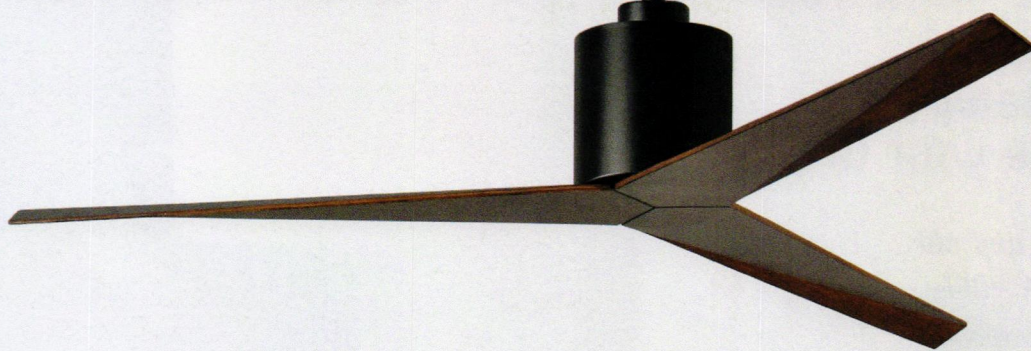
"Light fixtures are some of my favorite design elements to work in some mid century flair," Aletha says. "The globes look like they could have always been there, and the light above the sink is the perfect pinhole fixture for that space."

Mindful of both the space limitations in the small kitchen and the simplicity of the modern aesthetic, Aletha finished off the space with a few accessories in bright mid century colors. The end result is a kitchen that checks all the boxes for the homeowner, designer and home.

"This home is small. This kitchen is one of the smallest I've worked on, but it's also one of my favorites because we worked in those retro angled uppers," Aletha explains. "Don't let the size of your space dictate how much style you can work in." 🌿

MATTHEWS

FAN COMPANY



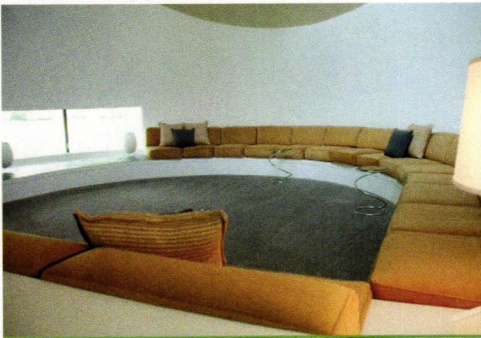
Lume Home. Original lamps to illuminate your life.

*Contemporary and old
in a brand new light.*

Lume Home (pronounced loom, as in to illuminate) makes original ceramic lamps inspired by mid-century modernism that bring handmade warmth and distinction to every room. These midcentury-inspired lamps are customized by your choice of glaze, texture, and wood and are individually artisan-made and assembled with care in Portland, Oregon.



Visit us today to order yours LUMEHOME.COM



MM modern
memphis
homes
MARGARET MIKKELSEN

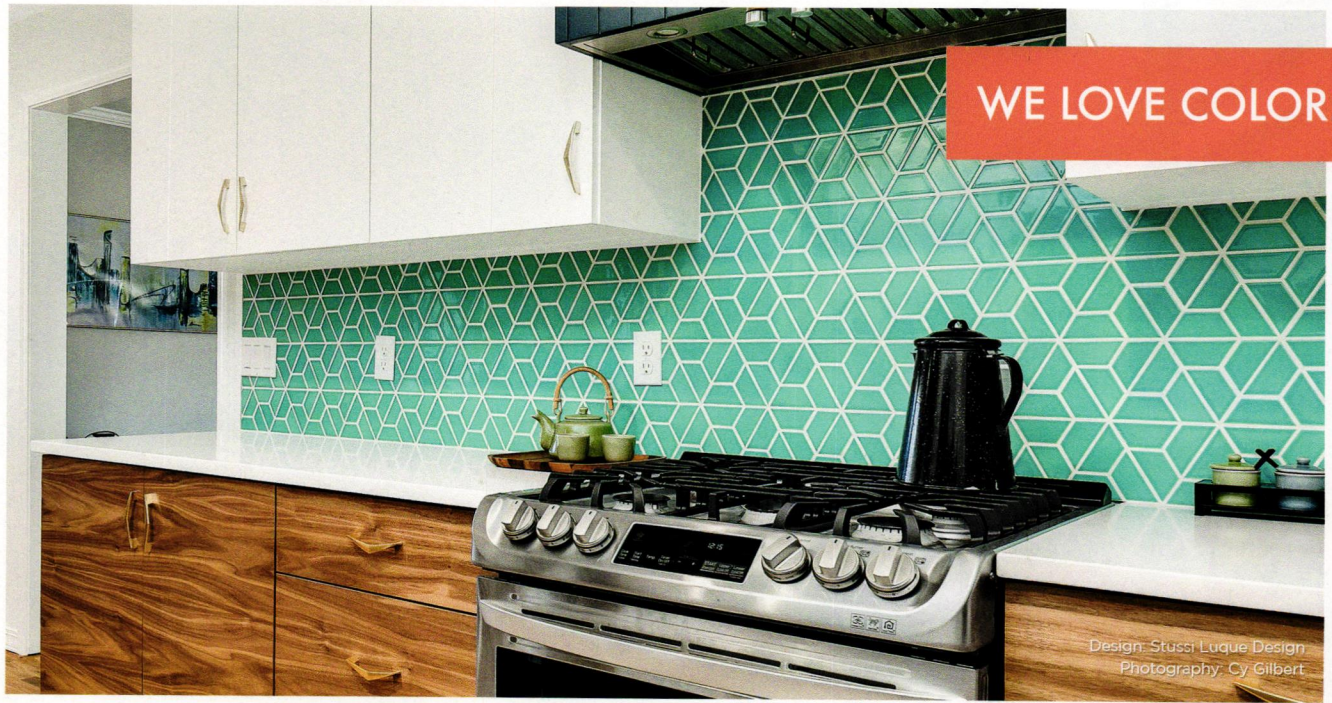


your modern real estate expert
in Memphis, Tennessee

CRYE-LEIKE®, REALTORS®
www.modernmemphishomes.com

direct: 901-896-2992
office: 901-766-9004
margaret.mikkelsen@clhomes.com





WE LOVE COLOR.

Design: Stussi Luque Design
Photography: Cy Gilbert



HANDCRAFTED TILE MADE IN PORTLAND, OR
www.clayhaustile.com | order direct at 503.928.3076



**Thoughtfully Designed &
Built for Generations.**



Find the Solomon Console at www.huntandnoyer.com



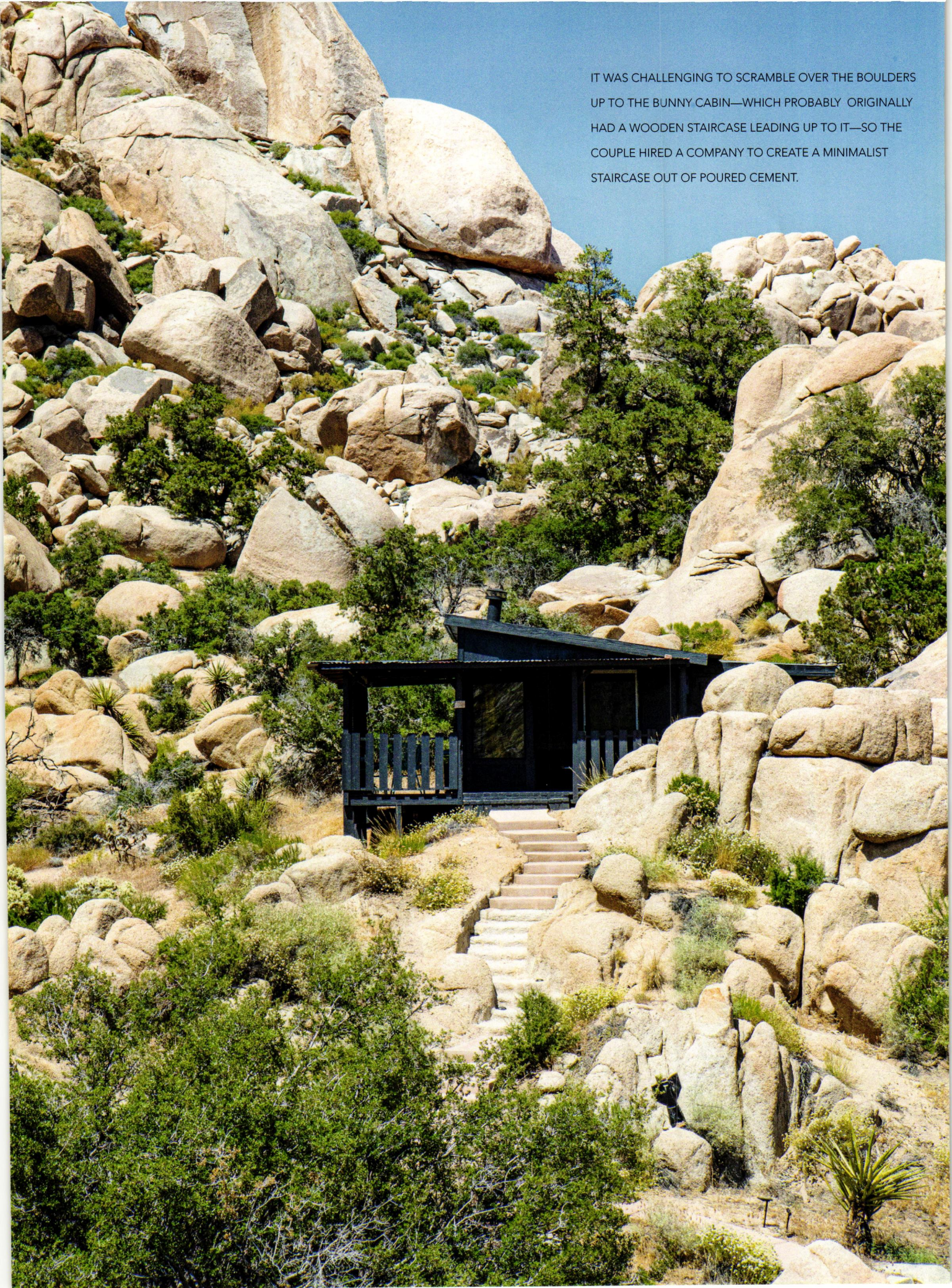
Desert Sanctuary



Tucked into a boulder-strewn canyon, this historic property has been reimagined as a restful retreat, with a nod to mid century swingin' styles.

By Kathryn Drury Wagner | Photography by Chad Mellon

IT WAS CHALLENGING TO SCRAMBLE OVER THE BOULDERS UP TO THE BUNNY CABIN—WHICH PROBABLY ORIGINALLY HAD A WOODEN STAIRCASE LEADING UP TO IT—SO THE COUPLE HIRED A COMPANY TO CREATE A MINIMALIST STAIRCASE OUT OF POURED CEMENT.





f you've ever been to Joshua Tree National Park, you know how magical it feels. The landscape is filled with surreal boulder formations. Sentient-seeming Joshua trees outstretch their spiky arms toward a night sky filled with stars.

After exploring the surrounds of Joshua Tree, Bob Bogard and Michael von Wittenau were hooked on the tranquility of the High Desert. They were looking for a retreat that was near their primary residence in Palm Springs, and when they came across this 5-acre ranch in Pioneertown—with historic structures, sweeping views of natural rock and an intriguing pedigree—they knew it was the perfect fit.

ABOVE: HAMMOCKS ARE LINED UP, CALLING FOR YOU TO REST FOR A WHILE.

BELOW: A MALM FIREPLACE KEEPS THIS CONVERSATION AREA COZY ON COLD NIGHTS. JOSHUA THE DOG KEEPS AN EYE ON THE AREA, WHICH INCLUDES A BAR AND A RACK OF LOCALLY MADE PONCHOS.



BELOW LEFT: IN THE MAIN COTTAGE'S MASTER BEDROOM, A WILD BULL OF A DRESSER REFUSES TO BE TAMED. IT, AND THE CHAIR, WERE BOTH ON THE PROPERTY WHEN THEY BOUGHT IT. THE RUG IS A NAVAJO SADDLE BLANKET, CIRCA 1880.

BELOW RIGHT: THE MALM FIREPLACE—A BRAND THAT DATES TO 1960—IS ONE OF THREE ON THE PROPERTY. THIS ONE WAS SOURCED FROM URBAN AMERICA IN LONG BEACH. THE COUPLE OUTFITTED ALL THE FIREPLACES WITH PROPANE FOR SAFETY, TO AVOID ANY SPARKS IN THE ARID CLIMATE. UNDERNEATH THE RECORD PLAYER, A VINTAGE SAMSONITE TRAIN CASE HOLDS ALBUMS.

OPPOSITE: DISCOVERED AT THE LONG BEACH ANTIQUE MARKET, THE TELEVISION CABINET IS FROM A TV SET CALLED AN RCA VICTOR PROGRAMMER. "THEY WERE ONLY MADE FOR ABOUT TWO YEARS," SAYS BOB. "YOU WOULD SET IT TO SWITCH TO A DIFFERENT CHANNEL AT A SET TIME." THIS WAS LONG BEFORE THE POWER OF REMOTE CONTROL TVs. THE GLASSWARE IS 1960s MID CENTURY EMPOLI ITALIAN BUBBLE GLASS AND GENIE BOTTLE DECANTERS. BEHIND THE TV, BREEZE BLOCKS SALVAGED FROM A PALM SPRINGS MID CENTURY HOME SEPARATE THE EAT-IN KITCHEN FROM THE LOUNGE AREA.

MID CENTURY MAKEOVER

Bob and Michael are married and have been a couple for 26 years. Michael is in the hospitality industry, and Bob is the director of public relations at O'Bayley Communications, which handles the marketing for Modernism Week—a favorite destination among *Atomic Ranch* readers. After purchasing the property in 2019, the couple named it Mod West Ranch and set about a careful makeover that would both preserve the historic roots and also better highlight its mid century legacy.

The property has three main structures, including a 1965-built two-bedroom, one-bath home that they call The Cottage; an original 1946 homestead cabin, now renamed The Bunny Lounge and redone with a groovy ski-lodge vibe; and The Studio, a large, open-air art studio that is ideal for indoor/outdoor recreation.







"The ranch had originally been owned by a female doctor in the 1940s, then by a Hollywood script writer, and most recently, a guitarist from a famous 1980s rock band," says Bob. Going back even further in time, the land had been used by indigenous peoples, who left signs such as grinding holes in the stone they used to prepare food.

As the ranch's new stewards, Bob and Michael carted out seven truckloads of debris from various eras. "We could see the potential," Bob says. "It wasn't so much construction as editing." The property's makeover took just about a year. "We wanted to respect the original architecture as much as possible," Michael explains. "The buildings had such nice bones." They also sourced mid century vintage furnishings, mainly found in Palm Springs and Long Beach, California.



“We could see the potential ... It wasn't so much construction as editing.” —Bob Bogard

TOP LEFT: THE SECOND BEDROOM IN THE MAIN COTTAGE HAS A GREAT VIEW OF THE PROPERTY'S JOSHUA TREES.

TOP RIGHT: THE FAB FLORAL ICE BUCKET IS FROM THE VINTAGE MARKET IN PALM SPRINGS, WHILE THE RESTORED (AND GROOVY) BAR WAS A FIND FROM PALM SPRINGS ANTIQUE GALLERIES.

RIGHT: THE HAMMOCK GARDEN IS PLACED SO IT'S NOT IN FULL SUN, BUT YOU CAN STILL SEE THE STARS FROM YOUR PERCH AT NIGHT. FUN FACT: THAT'S A JOSHUA TREE THE PORCH WAS BUILT AROUND. HOWEVER, AS OF FALL 2020, THE PLANT SPECIES IS PROTECTED UNDER THE CALIFORNIA ENDANGERED SPECIES ACT, SO IF YOU WERE BUILDING TODAY, YOU'D NEED TO GIVE MORE CLEARANCE. THE ICONIC TREES NEED OUR PROTECTION; THEY LIVE 150 YEARS ON AVERAGE AND HAVE BEEN DEVASTATED BY CLIMATE CHANGE AND LOSS OF HABITAT.

OPPOSITE: THE VIEW INTO THE MAIN HOUSE'S WELL-STOCKED KITCHEN.



THE LARGE TABLE WAS CUSTOM MADE FROM A WOODEN
BLIND FROM A BELGIAN STRUCTURE. MOUNTED TO THE WALL,
A FORMER GRAPE-DRYING RACK USED IN WINEMAKING NOW
IS PLANTED WITH SUCCULENTS.





TOP LEFT: THE BREEZE COMES THROUGH THE DECK SURROUNDING THE BUNNY LOUNGE. THE PROPERTY IS IN AN INTERESTING MICRO-CLIMATE, AND WHILE TEMPERATURES ARE SOMEWHAT SIMILAR TO THOSE IN PALM SPRINGS, THEY TEND TO RANGE ABOUT 10 DEGREES COOLER. IT CAN GET UP TO 95 DEGREES IN THE SUMMER, BUT IN THE WINTER, IT CAN BE SNOWY. ONE RECENT WINTER DAY SAW 18 INCHES OF SNOW COMING DOWN.

TOP RIGHT: AN AL FRESCO BATHROOM BEHIND THE BUNNY LOUNGE ALLOWS ONE TO BATHE, SHAVE AND EVEN, WELL, FLUSH, OUTDOORS. THE STRUCTURE ABUTS BUREAU OF LAND MANAGEMENT LANDS, SO THERE'S NO ONE AROUND TO SEE.

RIGHT: MOD WEST RANCH'S OWNERS, MICHAEL VON WITTENAU (LEFT) AND BOB BOGARD, WITH THEIR POOCH JOSHUA.



DESERT LIGHT

The couple loves visiting the home for their own retreats, and also rents it out for others to enjoy. "There's a solemnness, a sacredness here," says Bob. "There's a deep stillness."

"It's so peaceful and quiet that it actually took me awhile to adapt to that," says Michael. "Now once I'm here, I immediately relax and appreciate the natural beauty. We sit in the hot tub and look at the rock formations. They look different every time of day, due to the light changing. I think that's why a lot of musicians and creative types live in the High Desert. There's just so much inspiration." 🌀

Form, Function and **Style**



A vintage home tour led this couple to the Wexler and Harrison home that perfectly encapsulates everything they adore about Mid Century Modern design.

By Devlin Smith

Photography by Kevin McDermott (exterior) and Rex Bonomelli (interior)





TOP: THE VIBRANT BLUE ENTRYWAY PROVIDES A HINT OF DESIGN ELEMENTS TO BE FOUND THROUGHOUT THE HOME, INCLUDING THE METAL IN THE BERTOIA CHAIRS AND NELSON SIDE TABLE, THE LASER-LEMON PILLOW FABRIC AND THE CHARLES LEVIER ARTWORK.

T

hey fell in love at Modernism Week. New Yorkers Philip Heckman and Rex Bonomelli were in Palm Springs for the 2015 edition of the annual ode to mid century design and style when on a home tour they discovered El Rancho Vista Estates, a neighborhood designed by Wexler and Harrison and developed by Roy Fey in the early '60s. A home in the development was for sale and would soon be theirs.

PRINCIPLES TO DESIGN BY

"We were drawn to the potential of this home, which was for sale, because of the huge, empty backyard with mountain views," Philip, an Emmy-nominated costume designer for television and stage production, says. "It was essentially a blank canvas with the exception of the original kidney-shaped swimming pool with original coping. Also, the Capri model was our favorite layout after seeing the other models during the tour."



The three-bedroom, two-bath home features an open layout and plenty of outdoor spaces where Philip and Rex, a graphic designer whose portfolio includes pieces for Broadway productions and bestselling books, could flex their design skills, showcase their growing collection of vintage pieces and celebrate the things they love most about the mid century aesthetic.

"As a costume designer, I have always been inspired by the futuristic, Space Age 1960s fashions of Pierre Cardin, Paco Rabanne and André Courrèges," Philip says. "The combination of form, function and style is the perfect mix to describe these designers and also what I love most about mid century design and décor. Form, function and style perfectly describe our Donald Wexler home and are the three concepts I keep in mind when choosing pieces for the house."



PATIENCE IS A VIRTUE

The couple, who use the home to get a break from the snowy New York winters, followed the wise advice to take their time in selecting pieces for the space and not try to furnish the whole thing at once, advice they pass on to other mid century homeowners.

"We ate meals at a folding table for a long time until we found our Tulip table and chairs," Rex says. "Our Broyhill Brasilia bedroom set was collected piece by piece from different states on eBay. Our walls were mostly bare for years because we really wanted to wait to find the right artwork. It wasn't until we stumbled on a Charles Levier painting in a vintage store two years ago that we knew what we wanted on the walls."

TO ADD AN ELEMENT OF DRAMA TO THEIR HOME, THE HOMEOWNERS DECIDED TO KEEP THE EXTERIOR CLASSIC AND CONSERVATIVE SO THE REVEAL OF THE INTERIOR AND BACKYARD SPACES WOULD GIVE VISITORS A "WOW" MOMENT.



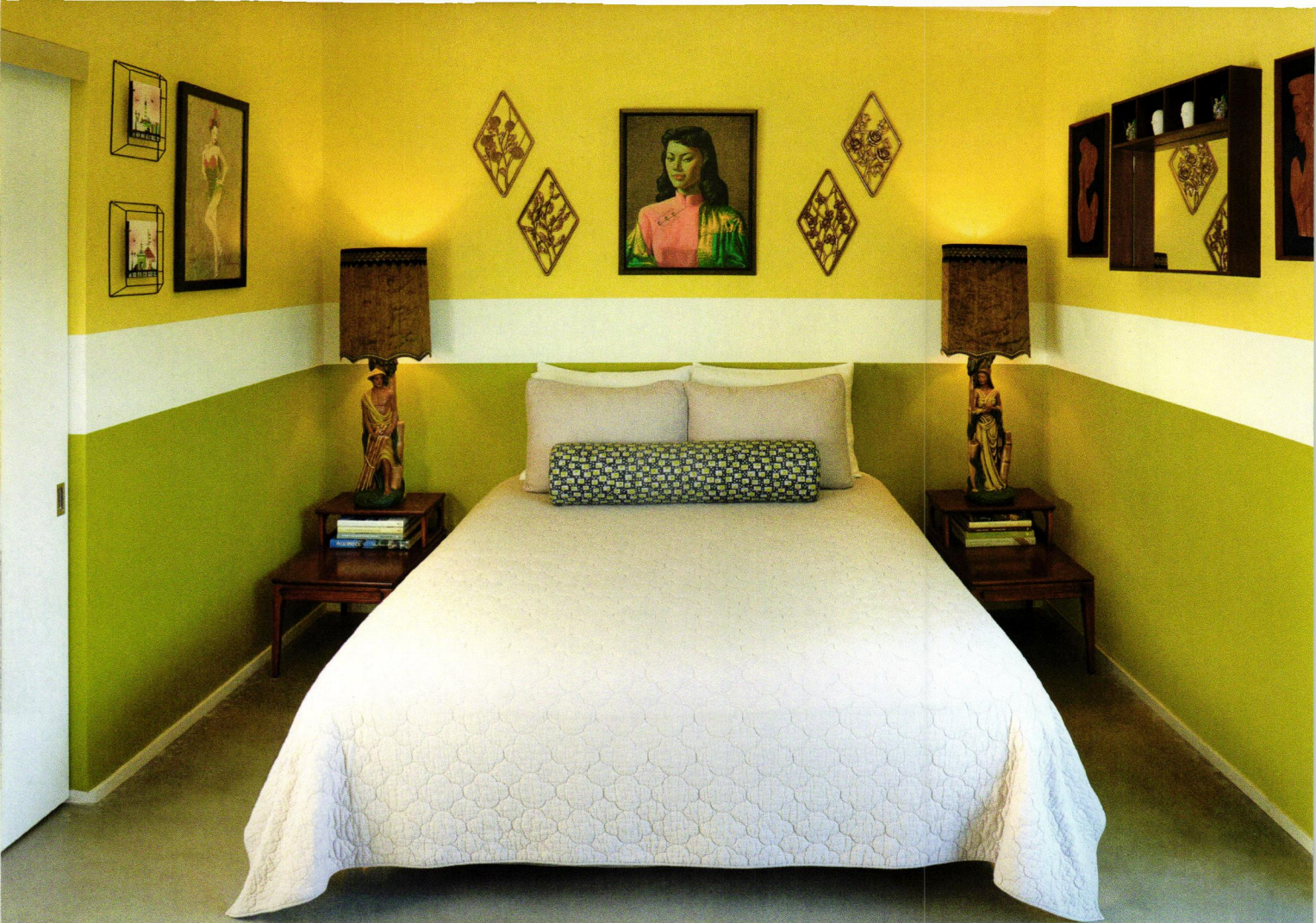
THE HOMEOWNERS TOOK THEIR TIME TO FIND THE IDEAL DINING TABLE FOR THEIR HOME, A RECOMMENDATION THEY MAKE TO OWNERS OF OTHER MID CENTURY HOMES. "DON'T RUSH. WE ATE MEALS AT A FOLDING TABLE FOR A LONG TIME UNTIL WE FOUND OUR TULIP TABLE AND CHAIRS," REX SAYS. THE VINTAGE LAMP WAS A FLEA-MARKET FIND.





TOP: THE PREVIOUS HOMEOWNERS MADE SOME UPDATES TO THE HOME THAT STAYED TRUE TO THE ORIGINAL MID CENTURY DESIGN BUT MAXIMIZED SPACE, LIKE REMOVING A LARGE PANTRY THAT ONCE SEPARATED THE KITCHEN AND LIVING ROOM. REX SAYS HE WOULD LIKE TO ENLARGE THE KITCHEN IN THE FUTURE.

ABOVE: THE LIVING ROOM OFFERS EASY VIEWS OF THE HOME'S OUTDOOR SPACES. IT'S DECORATED WITH SOME STANDOUT PIECES THE HOMEOWNERS HAVE COLLECTED FROM A VARIETY OF SOURCES OVER THE YEARS, INCLUDING A CADDO WALL UNIT THAT ROCK HUDSON HAD IN HIS BERMUDA DUNES HOME AND A VINTAGE BAR CART WITH NEW LEGS THAT CAME FROM A PROP RENTAL COMPANY.



A CREATIVE PALETTE

That same care and patience was taken in selecting the fabrics that would establish the home's color palette. And with two designers in the family (plus pup Jimmy), they easily found creative and inventive solutions to issues as they arose. For instance, the 1960s fabric they wanted to use for their outdoor furnishings posed a problem.

"The print was a mod geometric design in yellow, orange and green," Philip says. "These colors started to become the anchor for our accent colors inside the home, and ultimately that fabric inspired the restoration of our Homecrest patio furniture. We had a gut feeling that the vintage fabric would not withstand the summer sun, so Rex recreated the print in Illustrator. We then had the new-and-improved mod geometric design printed on an appropriate outdoor fabric."

ABOVE: THE GUEST ROOM WAS CREATED TO FEEL LIKE A "MID CENTURY BOUTIQUE HOTEL ROOM," ACCORDING TO PHILIP. THE 1950s PLASTART POLYNESIAN TABLE LAMPS WERE THE DESIGN STARTING POINT. THE HOMEOWNERS BOUGHT THEM SHORTLY AFTER THEY BOUGHT THE PALM SPRINGS HOUSE.

OPPOSITE TOP LEFT: JUST AS IN OTHER SPACES IN THE HOME, THE HOMEOWNERS TOOK THEIR TIME IN COLLECTING THE RIGHT PIECES FOR THE MASTER BEDROOM. THE BROYHILL BRASILIA SET WAS AMASSED PIECE BY PIECE FROM DIFFERENT EBAY SELLERS LOCATED IN DIFFERENT STATES.

OPPOSITE RIGHT: A FEW MOD TROPICAL COLORS ARE FOUND THROUGHOUT THE HOUSE TO TIE TOGETHER THE DÉCOR INSIDE AND OUT. THE CREAMY ORANGE USED FOR THE GUEST BATHROOM WALLS IS ALSO FEATURED ON THE FURNISHINGS IN THE KITCHEN, BACKYARD AND PATIO.

OPPOSITE BOTTOM: ONCE THIS HOME WAS THEIRS, THE HOMEOWNERS SET ABOUT FINDING THE PERFECT VINTAGE PIECES TO FILL THEIR NEW SPACE. THE SVEND MADSEN DESK AND ERIK KIRKEGAARD CHAIR WERE TWO OF THE FIRST THINGS THEY BOUGHT FOR THE HOUSE.





THE HOMEOWNERS DESCRIBE THE BACKYARD AS BEING “ESSENTIALLY A BLANK CANVAS,” WHEN THEY MOVED IN, FEATURING ONLY THE KIDNEY-SHAPED POOL. THE SPACE WAS REDESIGNED TO SHOWCASE THE 1960s HOMECREST FURNISHINGS THE HOMEOWNERS HAVE COLLECTED PIECE BY PIECE AND FEATURES LEVELS THAT MIMIC THE SUNKEN LIVING ROOMS THAT WERE A POPULAR FEATURE IN MANY MID CENTURY HOMES.

That yellow, orange and green in the vintage fabric, and a complementary blue, are now found throughout the home, from the paint on the front door to the furnishings on the guest patio to the Cathrineholm enamelware in the kitchen and living room. All the aspects flow together beautifully to create a vibrant mid century showplace that’s also inviting and livable.

“This home is the perfect amount of space for us,” Rex says. “It’s manageable to maintain when only one of us is here, but we have a lot more room to spread out in than we do in our New York apartment. We also love having a bit of mid century history for ourselves.” 🌀

SECLUDED FROM THE STREET BY A BLOCK WALL, THE FRONT PATIO AREA IS CONNECTED TO THE DINING AREA BY A LARGE SLIDER AND FEATURES THE SAME ORANGE COLOR PALETTE FOUND IN THE DINING AREA AND BACKYARD.



A Garden in the *Atrium*



See how these homeowners embraced the original features of their 1976 Sacramento home to create a meaningful and unique dry garden.

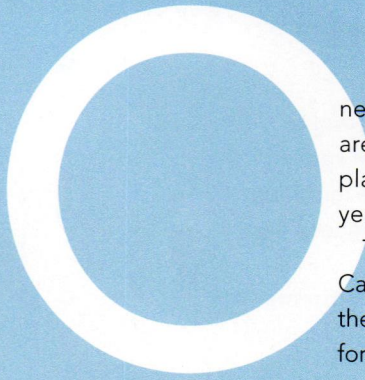
By Rabekah Henderson | Photography by Daniel Blue

THE SUNNY ATRIUM IS THE FIRST THING YOU NOTICE WHEN YOU ENTER THE HOME, AND IT SETS THE STAGE FOR THE WARM AND WELCOMING TONES THROUGHOUT THE SPACE. IT'S THE CENTERPIECE OF THE HOME, AS THE VARIOUS ROOMS AND NOOKS SURROUND IT.



THE FRONT YARD OF TYLER AND JESSICA WICHMANN'S HOME IS COVERED BY ANOTHER DRY GARDEN, WHICH GIVES IT A SOPHISTICATED DESERT VIBE. THE COUPLE HAS ALWAYS ADMIRER OTHERS' DESERT GARDENS, AND THEY WERE EXCITED ABOUT THE CHANCE TO CREATE ONE THEMSELVES.





ne of the first things that attracted Tyler and Jessica Wichmann to their Sacramento area home was its atrium. "It was the biggest draw for us. My wife and I are big plant people, and we've collected cacti, succulents and houseplants over the years," says Tyler.


The home was built in 1976 by the Streng Brothers, Bill and Jim Streng. Along with Carter Sparks, the home's architect, they built nearly 4,000 homes in the area during the mid century. The three-bedroom, two-bathroom 2,100-square-foot home was built for its climate, as Sparks placed indoor atriums (rather than an exposed courtyard) and AC units in his designs, both of which make the home especially suitable for the hot Sacramento summers. "The atrium is built for the valley, as it gets us that indoor-outdoor feel without scorching us with the heat," says Tyler.



RENOVATIONS AND RESTORATIONS

After closing on the home in August 2019, Tyler and Jessica got to work on renovations. The home's original features had been kept in good shape, but it needed some 21st-century updates, like removing asbestos and popcorn ceilings. "The house had amazing bones," says Tyler. "We were only the second owners of this home."

The couple also restored the original concrete slab flooring, removed a large and obstructing Norfolk pine in the atrium and cleared out the remaining plants and soil in the space to get rid of pests.



THE ENCLOSED ENTRYWAY, WITH ITS BURNT-ORANGE MOTIFS, BRIGHT GLASS PANELS AND SMALL DISPLAY OF SUCCULENTS HINTS AT WHAT LIES BEYOND THE FRONT DOOR.

TO READ MORE ABOUT ANOTHER STRENG BROTHERS-CARTER SPARKS HOME, SEARCH SACMOD MAKEOVER ON [ATOMIC-RANCH.COM](http://atomic-ranch.com).



ABOVE: THE MUTED GREENS OF THE COUPLE'S MANY PLANTS ARE SEEN IN THE MILO BAUGHMAN CHAIR SOURCED FROM A LOCAL DEALER. THE CHAIR AND THE COMFORTABLE SOFA CREATE A RELAXING AND INVITING LIVING ROOM.

BELOW: THE VIBRANT HUES OF THE CHROME CRAFT DINING ROOM SET FIND ECHOES ELSEWHERE IN THE SPACE, LIKE THE FRONT DOOR OR THE MODERNICA CHAIRS IN THE GREAT ROOM.





THANKS TO THE HELP OF KERF DESIGN, TYLER AND JESSICA'S KITCHEN PERFECTLY WALKS THE LINE BETWEEN RETRO FUN AND 21ST-CENTURY NECESSITIES. THE KITCHEN STILL MAINTAINS ITS ORIGINAL FOOTPRINT, AND THE WINDOW OVER THE SINK IS A PASS-THROUGH, ALLOWING FOOD AND OTHER ITEMS TO BE EASILY PASSED TO THE BACKYARD.

THE HANGING LIGHT IN THE ATRIUM IS ORIGINAL TO THE HOME. DESIGNED BY ARCHITECT CARTER SPARKS AND HIS FRIEND GUNNAR LINDH, THESE LIGHTS ARE RARE IN OTHER STRENG BROTHERS HOMES, MAKING THEM ESPECIALLY DESIRABLE.

Tyler and Jessica were excited to make the atrium their own. They decided to turn their atrium into a dry garden, planting euphorbia, cacti and succulents, many of which the two had been raising for years. "It was one of the most humbling things to be able to put our plants into our new atrium and watch them grow, as our house and family grows alongside them," says Tyler.

Another space that needed lots of TLC was the kitchen. Tyler and Jessica worked with Kerf Design of Seattle, Washington. It was important to them to keep the original footprint, so they worked with Kerf to restore the kitchen's original charm, while making sure it was up to 21st-century standards. They added new raised quartz countertops, appliances, cabinets and hardware. "We knew we wanted to work with Kerf ... and we couldn't be happier with how [the kitchen] turned out," says Tyler.



DESERT VIBE, INSIDE

You don't need to live in the arid American Southwest to create that sunny desert feeling in your own home. Here are three ways you can get the look yourself.

- **DESERT COLORS:** Use lots of burnt oranges and muted greens, like Tyler and Jessica did, for a color palette that matches the canyons and cacti of the Southwest.
- **DESERT TEXTURE:** Smooth concrete, pebbled inlays and a touch-of-texture siding bring echoes of polished rock, endless sand and ancient canyons into your space.
- **DESERT FLORA:** Pops of succulents and cacti are a low-risk way to get that Desert Modern look. Place them in prominent spaces, like your dining room table or bedroom dresser, for the best effect.





LEFT: THE SHELVING UNIT IN THE GREAT ROOM HOLDS THE COUPLE'S TATTOO MEMORABILIA, FAVORITE BOOKS AND GUADALUPE IMAGERY. THE PAINTING THAT SITS OVER THE MODERNICA SOFA IS FROM A FRIEND AND ARTIST, GUY LONG, OWNER OF ROSE CITY. TYLER AND JESSICA CREDIT THE PAINTING AS INSPIRING THE COLOR PALETTE THROUGHOUT THE REST OF THEIR HOME.

BELOW: SERENE AND SIMPLE, TYLER AND JESSICA'S BEDROOM IS A RETREAT FIRST AND FOREMOST. THE GRAY SIDING MATCHES THE EXTERIOR AND ATRIUM SIDING, CREATING AN INDOOR-OUTDOOR FEEL. THE DESIGN THAT SITS ABOVE THEIR BED IS FROM THEIR WEDDING, AND THEY BOTH HAVE TATTOOS OF IT AS WELL.



A BLISSFUL BEDROOM

But the bedroom is where Tyler and Jessica's personal style really shines. "We're into the color black. It's a prominent color we use, and so in our bedroom you see that a lot," says Tyler. The wall that sits behind the bed is covered in a gray siding, a nod to the atrium and the home's exterior, where it is also used. The furniture and fixtures have been carefully curated and are some of the couple's favorites. The George Nelson lights were something they had wanted for a long time, and they give the space warm light with a mid century look. The Glen of California dressers were another long-sought-after piece, and they provide stylish storage to the pared-down and relaxing space. "We wanted to make sure our bedroom was a retreat," says Tyler.

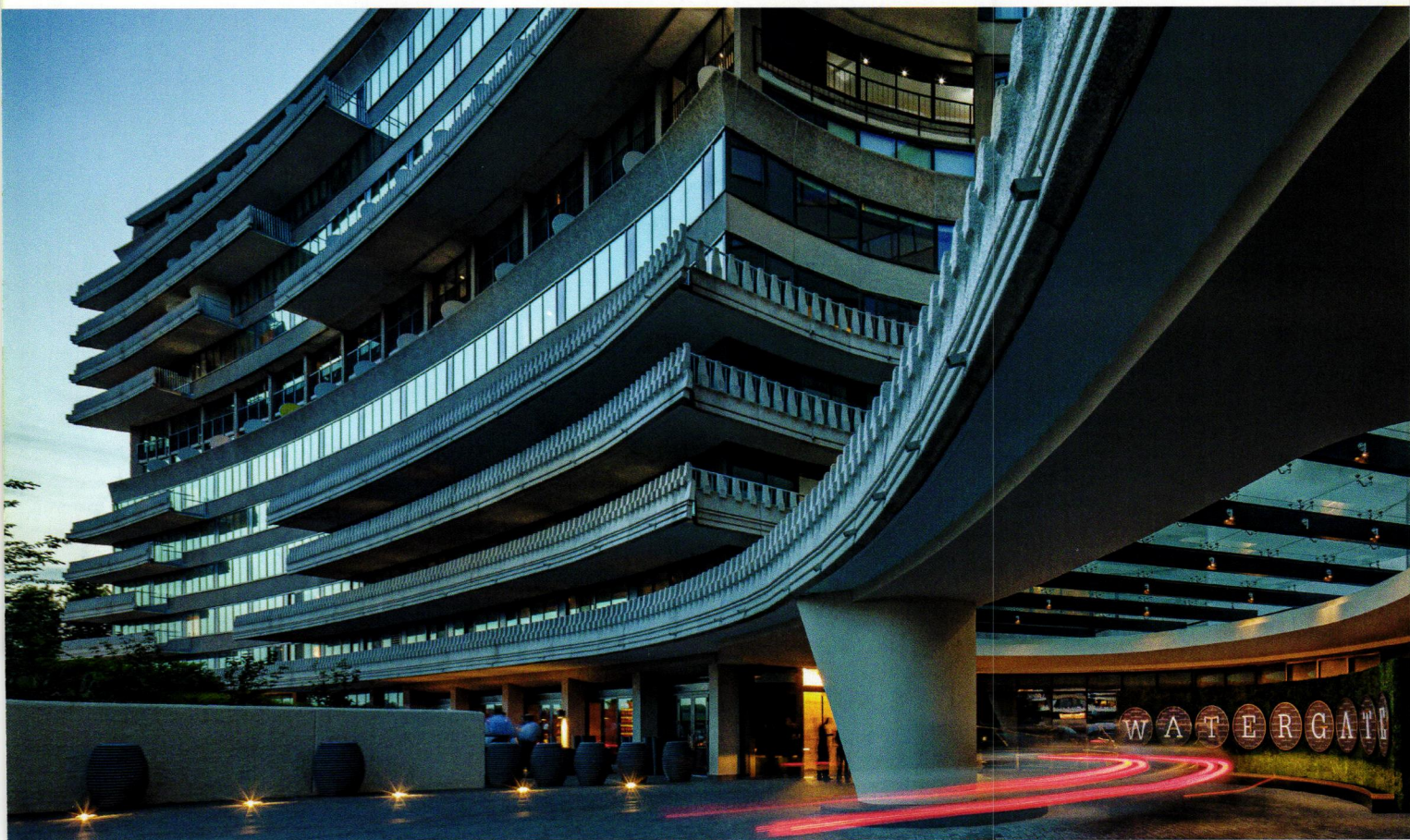
Together, Tyler and Jessica have created a home that embraces its mid century roots, while still providing modern comforts and reflecting the couple's personal style. And rather than being covered up or ignored, the home's most unique feature—its atrium—finds its place with Tyler and Jessica. "That atrium will grow into a botanical desert garden over the years ... and watching ourselves grow with the plants, that will be such a cool thing," says Tyler. 🌿

Mid Mod GETAWAYS

These 5 luxury and boutique hotels offer an MCM home away from home.

By Jolene Nolte

Craving a change of scenery? Whether you file these away for future reference or you're able to get out now, these five Mid Century Modern hotels from Chicago to Portland and beyond are worth the trip.



RON BLUNT/THE WATERGATE HOTEL



/ The Watergate / Washington DC

If the name and location has you thinking Richard Nixon, you're right. It's not just this hotel's décor that has history. Designed by Italian architect Luigi Moretti, the hotel opened in 1967. Its modern style was a subject of controversy and consternation. Then on June 17, 1972, five men broke into the Democratic National Convention in the Watergate complex and hid out in Room 214 of the Watergate Hotel.

Decades later, the hotel nods to the history that is forever tied to its name. Room 214 is now named and preserved as The Scandal Room. But today the hotel also offers luxurious Mid Century Modern accommodations. Now the drama is all in the décor, smartly appointed and refreshed by designer Ron Arad. To learn more about the hotel's history or to book a visit, see thewatergatehotel.com.

/ The Jupiter Hotel / Portland, Oregon

Located in Portland's Central Eastside Entertainment District, The Jupiter Hotel is for urbanites who love MCM style. It's pet friendly, so you can bring your furry friends along, and each room is equipped with chalkboard doors and chalk. Side rooms and an outdoor courtyard afford places outside your room to hang out and enjoy the MCM ambience. To book, visit jupiterhotel.com.

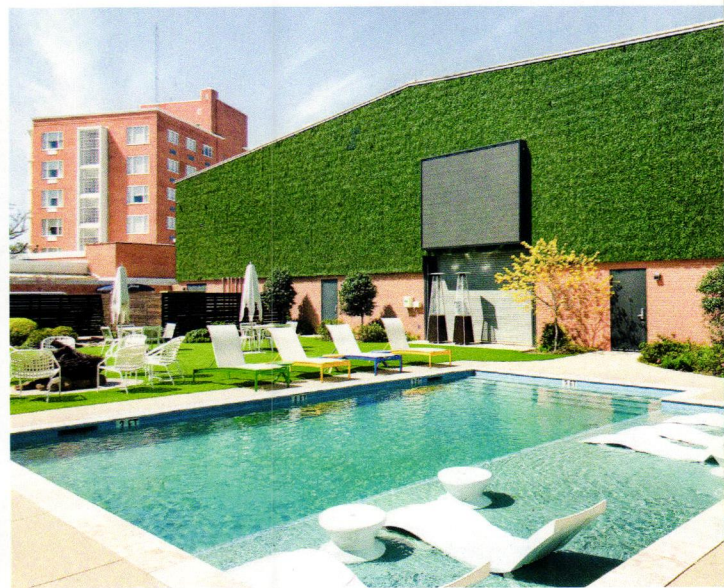




ADRIAN GAUT

/ The Robey / Chicago, Illinois

The Robey combines two historic buildings in Chicago. One is a 1929 Art Deco skyscraper designed by Perkins, Chatten & Hammond as an office building. The second is a 1905 Hollander Fireproof Warehouse. The skyscraper houses The Robey's Tower Rooms, lobby and rooftop spaces. Belgian designers Nicolas Schuybroek Architects and Marc Merckx Interiors transformed the office building into a sophisticated MCM hotel. The former warehouse nods to its past by retaining industrial touches "with boutique finishes and custom-designed furniture brought to life by DELORDINAIRE architects." It now houses The Robey's Annex rooms. To book a stay, including for a day-use work space, visit therobey.com.



/ The Fredonia / Nacogdoches, Texas

This hotel dates back to April 1955 in Nacogdoches, which purports to be Texas' oldest town. Hotel Fredonia was originally a community-owned hotel, and a successful one at that. In 2016, new owners Barbara and Richard Dewitt oversaw a renovation that refreshed the hotel's Mid Century Modern roots. The team comprised architect Army Curtis and interior design by Amy Still and owner Barbara Dewitt. Today the Fredonia Hotel is on the National Register of Historic Places and, along with its MCM design, offers amenities such as two outdoor pools—including one with an outdoor movie screen—a business center, and pet-friendly rooms. To learn more, visit thefredoniahotel.com.



/ Kate's Lazy Meadow / **Catskill Mountains, New York**

If you're craving a rustic retreat, Kate's Lazy Meadow might be just the ticket. Inside the cabins, enjoy the playful 1950s design by owners Kate Pierson of the band B-52s and Monica Coleman. Outside, enjoy the soothing sights and sounds of the Esopus River and the Catskill Mountains. They offer pet-friendly options as well. Book a minimum two-night stay at lazymeadow.com. 🍄

projecthouse part 1



MODERN MID CENTURY

Welcome to our year-long series where we document a new build inspired by old mid century style. By Kristin Dowding

TOP: A DIGITAL RENDERING OF THE PROJECT HOUSE EXTERIOR. ONE OF THE WAYS MICHAEL INFUSES MCM STYLE INTO HIS NEW BUILDS IS THROUGH THE STRUCTURAL DESIGN. "THE COMBINATION OF TRANSOM WINDOWS [WITH] POST-AND-BEAM CONSTRUCTION BRINGS A CLASSIC MID CENTURY MODERN LOOK TO THIS MODERN AMERICAN RANCH," HE SAYS.

RIGHT: THE PLANS FOR THE 3,800-SQUARE-FOOT STRUCTURE INCLUDE LARGE BEDROOMS, AN OPEN KITCHEN AND LIVING ROOM, COVERED PATIOS AND A CASITA.

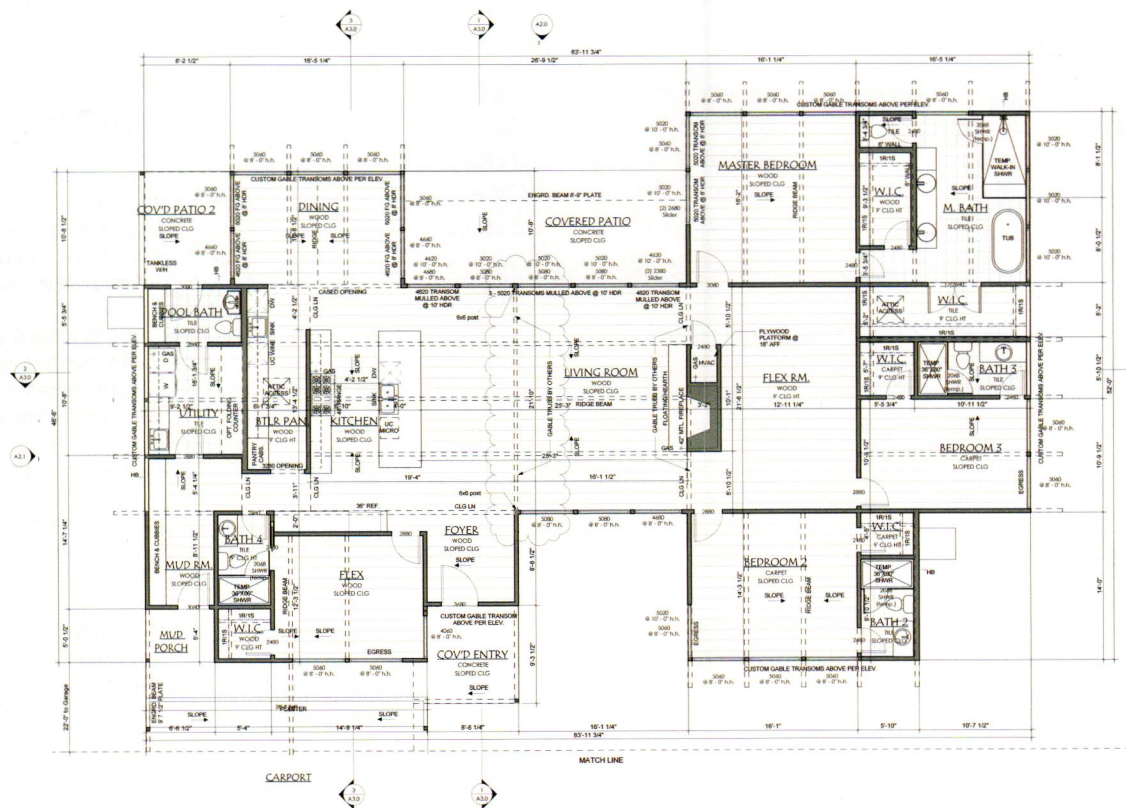


PHOTO BY ASHLEY TULLIS

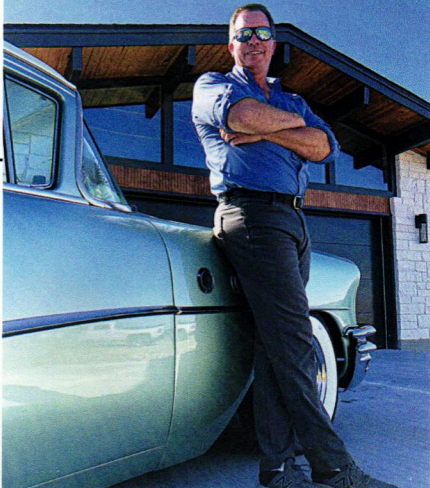


PHOTO BY KAYLA PASCHALL



ABOVE LEFT: BUILDER MICHAEL WRAY IS BRINGING DECADES OF EXPERIENCE AND KNOWLEDGE OF MID CENTURY ARCHITECTURE TO OUR PROJECT HOUSE. ABOVE RIGHT: THIS WAS MICHAEL'S FIRST MCM-STYLE HOME. THE CUSTOM FLOOR PLAN PAID HOMAGE TO ARCHITECT CLIFF MAY'S ORIGINAL CALIFORNIA "RANCHO." THE FLOOR-TO-CEILING FIREPLACE IS MADE OF HAND-CUT NATIVE BLANCO LIMESTONE COUPLED WITH A FLOATING HONED LUEDERS STONE HEARTH. BELOW RIGHT: DOUGLAS FIR BEAMS AND NATURAL TONGUE-AND-GROOVE PINE CEILINGS COMBINE WITH LARGE TRANSOM WINDOWS TO BRING LIGHT AND WARMTH TO THIS CUSTOM GARAGE IN ONE OF MICHAEL'S PAST BUILDS.

Have you ever wanted the details of an iconic mid century home with a modern living floor plan? Then buckle up, because we're taking you behind the scenes of a new build in Dripping Springs, Texas, with the Atomic Ranch Project House.

You'll get to see the process from start to finish, with reveals in each issue throughout the year. And along the way you'll learn exactly what goes into designing a custom home with mid mod spirit.

"There's this question about Mid Century Modern style I think people often ask themselves: If I could design my own mid century home from scratch, what would I do? We decided to follow along with this project to see exactly that," says Jackie Torres, editor of Atomic Ranch magazine. Check out who we'll be partnering with and what exciting plans we have for this MCM new build.

THE PERFECT PAIR

We're partnering with an inspired builder and innovative designer to see this concept come to life. "Michael Wray, owner and founder of MidCentury Custom Homes LLC, knows how to build mid century-era style with modern scale and proportion," says Jackie. "We paired him up with Christine Turknott of Breathe Design Studio because we love the warm, dynamic interiors she creates. We think Christine's creativity and love of mid century style combined with Michael's willingness to be bold and take risks is the perfect match."

Michael has completed hundreds of projects in Austin and Texas Hill Country. Like many urban areas, it has neighborhoods built in the '50s with great examples of MCM architecture. They're growing in popularity, and Michael wanted to help fill the demand for them. "It's a labor of love to renovate these homes, and because of their scarcity, I wanted to deliver new construction with mid century design," he says.

HOW IT BEGAN

Michael's love for Mid Century Modern design began as a teenager, visiting relatives in Palm Springs and Los Angeles. He fell in love with the desert and California-style architecture. "It was the first time I'd ever truly had an emotional reaction to homes," he says. "They were so different and striking, and it stuck with me."



PHOTO BY KAYLA PASCHALL

Q & A with JICKIE TORRES

ATOMIC RANCH: What excites you the most about the idea of building new mid century-style homes?

JICKIE: It's a unique opportunity for Mid Century Modern fans to recreate everything they love about the era's design and architecture, while getting the modern conveniences that you can't always renovate into an old home.

I wouldn't love seeing an authentic mid mod house get stretched and enlarged or blown out so much that you lose the integrity of the home. But seeing someone create something that is an homage to the great architects of the period while building a floorplan for today? With great storage, ample amenities, dream features and room for how we live today? That can be a really exciting and intriguing thing to see.

AR: What do you expect to learn?

JICKIE: I expect that I, like anyone following along on this year-long journey, will learn how to balance old and new. There are similar design dilemmas at play here that anyone can relate to. How do I design a room that feels architecturally full, yet elegant and thoughtful? How do I fill a large space and bring in stylish comfort? What design elements can I bring into the kitchen that make it exciting yet timeless? I think we'll get to follow along the process behind these decisions and get takeaways that can apply to our own spaces, no matter what specs we're working with.



PHOTO COURTESY OF EICHLER SIDING



Fun Fact:

Go online to read more about how the Project House was inspired by Jackson Maine's personal home in the movie *A Star Is Born*.

ABOVE RIGHT: MICHAEL INCORPORATES CONTRASTING ELEMENTS IN HIS PROJECTS TO PROVIDE DIMENSION. IN THIS KITCHEN, THE BLACK INTERIOR BEAMS STAND OUT AGAINST THE WHITE TONGUE-AND-GROOVE CEILING, CREATING A BRIGHT AND OPEN LIVING SPACE.

EICHLER SIDING

One of the ways we're ensuring this new build pays homage to Mid Century Modern style is to incorporate materials from that era. Eichler Siding, will be providing Thinline exterior siding and interior Weldtex for the Project House. "Replacement siding for Eichler homes wasn't available in the '80s," says Jeff Nichols, owner of Eichler Siding. So they started producing grooved exterior siding and retro wall paneling to fill that need. They make these three different patterns of siding:

1. THINLINE

Thinline is a plywood siding panel with very thin grooves. "They're spaced relatively close together compared to current plywood siding sold in lumber yards," says Jeff. "The surface is smooth in texture as opposed to a rough surface."

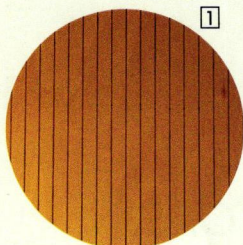
2. WIDELINE

Wideline is similar to Thinline in every way, except the grooves are much wider and deeper. "Thinline and Wideline are the two most common exterior siding patterns Joseph Eichler used in his homes," says Jeff.

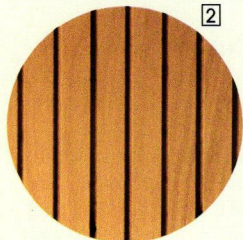
3. PLANK-TEX

Plank-tex is an 8" circular-sawn rough texture that has a unique appearance. "Plank-tex, though used by Mr. Eichler, is not exclusive to his homes only," says Jeff. "It was originally manufactured by US Plywood until the '70s. Once we discovered no one else was producing it, we added it to our line of Eichler patterns."

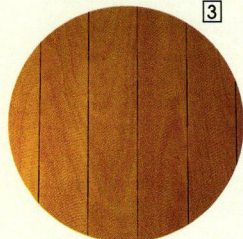
TIP: If you're unsure which siding pattern is best for your home, look at samples of other projects to see the different styles in action. "We have a photo gallery you can consult to get a sense of how the various patterns look," says Jeff. See eichlersiding.com for exterior siding examples and vintageplywood.com for interior panels.



1



2



3

Rather than simply duplicate these beloved structures, Michael's intentions have always been to create something new that pays homage to the architects he admired. "I studied the godfathers: Frank Lloyd Wright, Joseph Eichler, Claude Oakland and Cliff May," he says.

The challenges were in learning how to frame homes to a post-and-beam structural frame and then how to build homes that look mid century and meet the current energy codes. Michael had to research plans, dimensions, heights and ratios of mid century-era dwellings and study Eichler blueprints to get a strong foundation. "There is no training manual," says Michael. "It's a geometric exercise to get the scale of MCM homes correct." But that scale also has to take into account how houses have changed over the years. "You have to take authentic plans and adapt them for current market expectations," he says.

BIG PLANS

Project House is a sprawling one-story home with expansive glass, featuring the natural amenities of the setting. It will sit on a 1.2-acre lot that overlooks Lake Travis. "The best homes I've seen built look like they were supposed to fit the lot they're built on," says Michael.

To ensure its Mid Century Modern look, we'll be using some authentic vintage manufacturers for details like our tile and siding. "I don't want to give too much away," says Michael, "but we have some manufacturers from the '50s that are still in business, and we're incorporating their materials in the home." Once it's complete, it will act as a model home for MidCentury Custom Homes' subdivision development and will be open to public tours for two years. "Mid century is such an iconic, purely American style. A lot of our styles were adapted from other cultures, but not MCM. We want to grow the love for this style." 🌿

KASALA.COM | 206.838.8000



KASALA
MODERN HOME FURNISHINGS

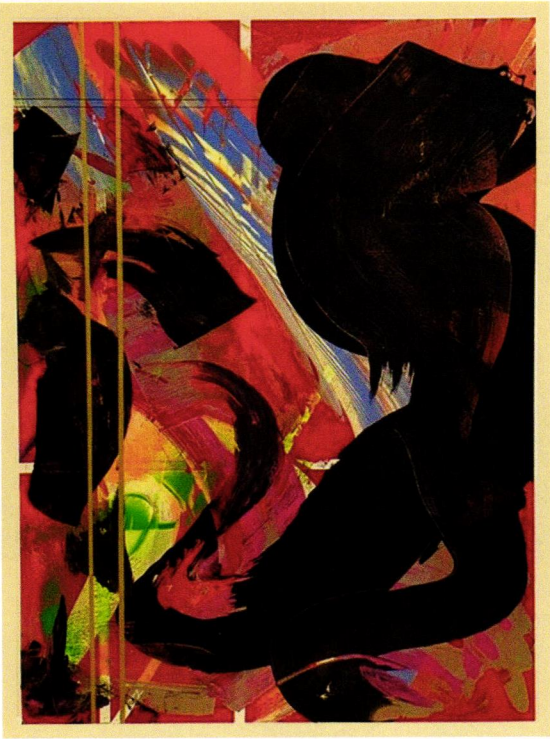


SIPARILA
Sustainably sourced
genuine wood cladding

cpsupply.us/Siparila
siparila@cpsupply.us
406-414-0786
Follow us:  @siparila
www.siparila.com



Robert Singer Art
STRUCTURE AND CHAOS



RAEL (FOR CHRIS), ACRYLIC MEDIUM AND OIL ON CANVAS,
122x91cm, 2020



IVO (FOR MARYANN), ACRYLIC MEDIUM AND OIL ON CANVAS,
152x122cm, 2020

robertsinger.art

603.667.8173 | © 2021, Fireplace LLC



F

THE FREDONIA HOTEL

WHERE LOCAL MEETS LUXURY.

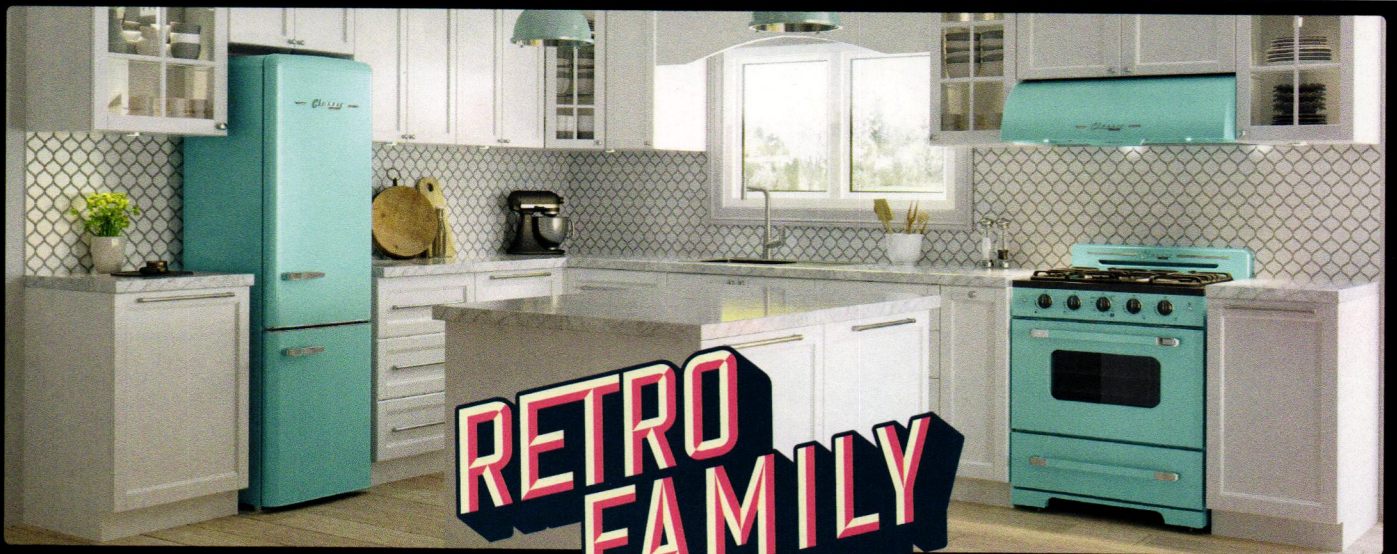
936-564-1234
www.thefredonia.com

222 N. Fredonia Street
Nacogdoches, Texas 75961





Palm Springs' finest Mid-Century Hotel
 available For Sale - \$3,695,000 contact Kevin at kevandjin@orbitin.com




Classic
 by UNIQUE

**CLASSIC RETRO
 BY UNIQUE**

Timeless Appliances For Your
 Mid-Century Modern Kitchen



uniqueappliances.com  [uniqueappliancesLtd](https://www.instagram.com/uniqueappliancesLtd)

UNIQUE
 APPLIANCES

In An Office Far, Far Away...



Martin McGee credits his love of **Space Age design** to the way its pieces feel very contemporary, yet still future-forward, even 60 years after the style's peak. Once he started collecting, "I just kept going," says Martin with a laugh.

So, when Martin began to look for an office, he knew it needed to be a place that could display some of his

favorite collectibles. But his first look at the space that would eventually become his office left him unimpressed. It was rundown, dingy and not somewhere Martin wanted to work. But after some consideration, he realized that with a little bit of TLC, the space could be transformed. It had originally been an office for a flooring business, but new walls, flooring and wallpaper remodeled the once shabby rooms into a Space Age office for the books.

See how one mid mod collector and dealer transformed his office into a place for some of his favorite Space Age collectibles.

By Rabekah Henderson | Photography by Peter Heuer

BELOW: THE SHELVES THAT SIT BEHIND MARTIN'S OFFICE CHAIR HOLD SOME OF HIS COLLECTIBLE SPACE AGE BOOKS, CLOCKS AND RADIOS. A UNIQUE ONE IS THE ORANGE GE BALL RADIO, WHICH SITS ON THE SECOND-TO-THE-TOP SHELF. IT FEATURES A ROTATING SPEAKER ON ITS TOP.

OPPOSITE: THE AUDIO LOUNGE SPACE BACKS UP TO MARTIN'S OFFICE SPACE. SURROUNDING BOTH ZONES ARE SOME OF MARTIN'S COLLECTIBLE SPACE AGE PIECES AND A HANGING ORANGE PENDANT LIGHT FROM AN OLD VINTAGE STORE IN PALM SPRINGS.



OFFICE SPACES

Martin was able to create eight distinct zones in his new office: an audio lounge, a library, an exhibit room, an office, a kitchen, a video production studio, an electronic music studio and a bar. Each zone is small, but each holds everything it needs without feeling cluttered. He credits his space management skills to his time spent overseas. "I lived in Japan for years, and I learned to adapt to very small spaces and apartments," says Martin.

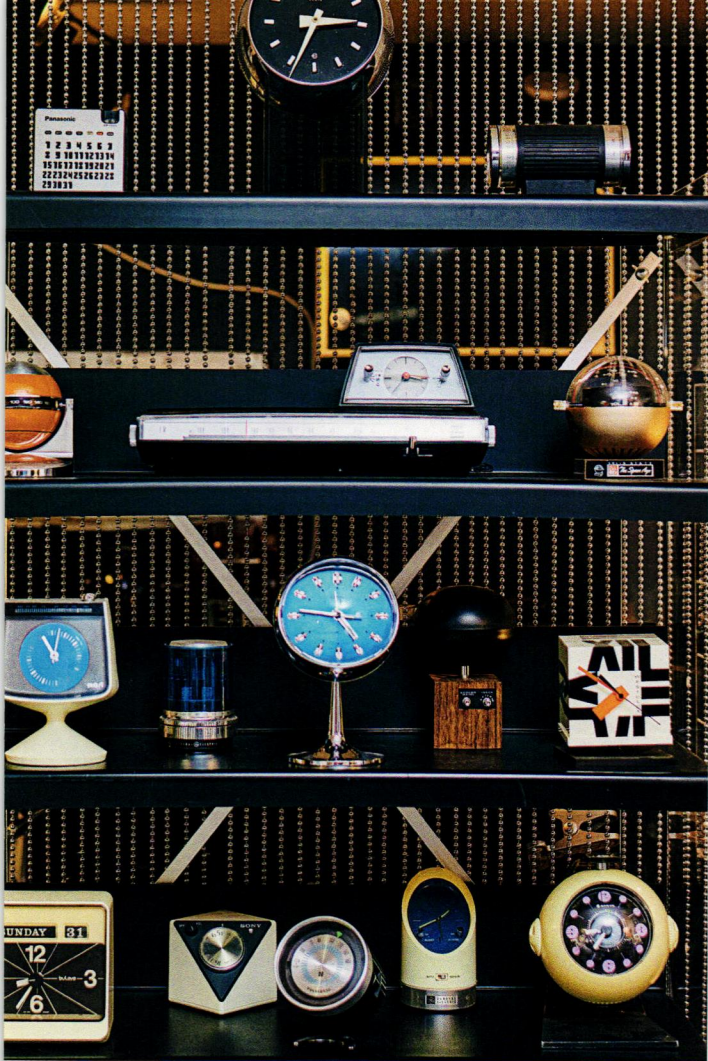


Making Your Home Office FEEL LIKE HOME

Three tips to make sure your home office is a reflection of you and your personal style.

- 1. FURNITURE YOU LOVE.** Your office furniture doesn't need to be whatever you can find at your local office supply store. Instead, think mid century! "If you see a significant, unique piece that will fit in your environment ... don't hesitate to get it," says Martin.
- 2. PERSONAL TOUCHES.** Adding in personal touches, like your favorite collectibles, mementos or family photos, will make your office feel more like your own.
- 3. FUN AMENITIES.** Your office is your space—so take advantage of it! Espresso lover? Add an espresso machine to your desk. Master gardener? Add a few of your favorite plants to your bookshelf.





ABOVE LEFT: MARTIN'S ECLECTIC CLOCK COLLECTION FEATURES MID CENTURY CLOCKS THAT WERE SOLD AROUND THE WORLD. SOME HAVE RADIOS, SOME SPIN AND SOME EVEN HAVE ROTATING SPEAKERS!

ABOVE RIGHT: MARTIN MCGEE HAS BEEN COLLECTING SPACE AGE PIECES FOR YEARS. HE LOVES HOW THEY FEEL CONTEMPORARY AND FUTURE-FORWARD, EVEN DECADES LATER.

OPPOSITE TOP: THE GRAY-AND-WHITE CHAIRS FROM THE ANTIQUES STORE REGAN & SMITH OF HUDSON, NEW YORK, REMIND MARTIN OF THE CAPTAIN'S DECK ON THE STAR TREK EPISODES HE WATCHED GROWING UP.

OPPOSITE BOTTOM: THE LUCITE STEREO CONSOLE IS ONE OF MARTIN'S FAVORITE PARTS OF HIS OFFICE. SITTING ABOVE THE CONSOLE IS A WINDOW THAT LOOKS DOWN ONTO THE STORE SPACE BELOW. FLANKING THE CONSOLE ARE TWO RETRO AUDIORAMA SPEAKERS FROM GERMANY.



FOR MORE ON MARTIN'S COLLECTION, SEARCH "MARTIN MCGEE" ON ATOMIC-RANCH.COM.

The office is an ode to Martin's love of Space Age design. Filled with the pieces he's collected over the years, nearly each nook or corner holds something dear to Martin's heart. A bookshelf that sits behind the bar area holds an eclectic collection of retro clocks from the 1960s and '70s. One of his favorites is a rotating white and lavender suspended clock from Sanyo. One side is a clock, while the other side is a radio. "It's indicative of the gravity-defying aspect of Space Age design," Martin says.

A nearby shelving unit holds a collection of Soviet-era commemorative space pins. "They're each like miniature pieces of art," says Martin. One of Martin's favorite pieces is a sleek acrylic figurine of a rocket and its plume. "I love that piece. I've had that for probably 15 years or so," he says.

MID CENTURY TOUCHES

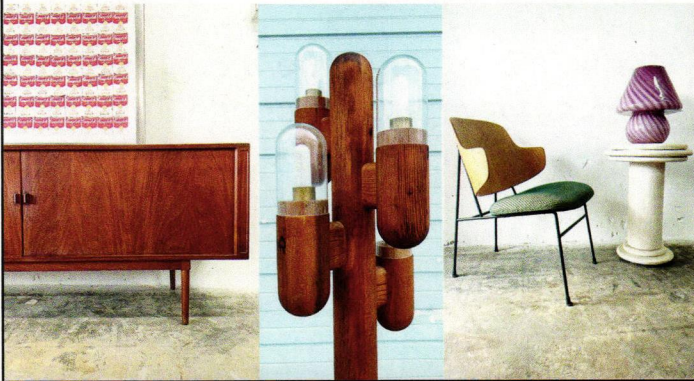
The office space features other classic mid century details, like a pair of side chairs that look straight from the screen of Star Trek—which was why Martin picked them. The elegant, barely-there lines of his other office furniture, like his bookshelves and stereo console, complement the collectible pieces that sit on top of them.

Martin's office demonstrates that an office need not be cold or impersonal. Instead, with some forethought and carefully curated pieces, offices can be unique reflections of the distinct people who inhabit them. ☄



FLIPATIK

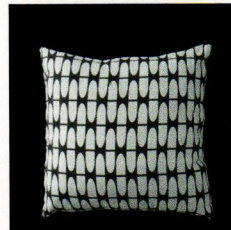
MID CENTURY
+ DANISH MODERN
+ VINTAGE



INSTAGRAM @ flipatik | EMAIL info@flipatik.com
2774 North Dixie Highway, Wilton Manors, Florida
www.flipatik.com | (305) 632-7827

Hip Haven

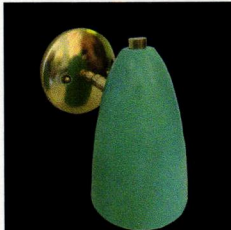
RETROMODERN LIGHTING + ACCESSORIES



BARKCLOTH THROW
PILLOW



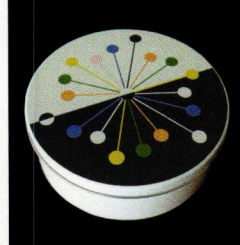
DELUXE SPUN METAL
FOUR-ARM CHANDELIER



RETRO BULLET LIGHT
SINGLE SCOFF



GLOBE PENDANT



SPUTNIK GIFT TIN



RETRO BULLET PLANTER

WWW.HIPHAVEN.COM | 512-462-4755

Jillian Rene Decor™
layered. linen. luxury.

www.JillianReneDecor.com

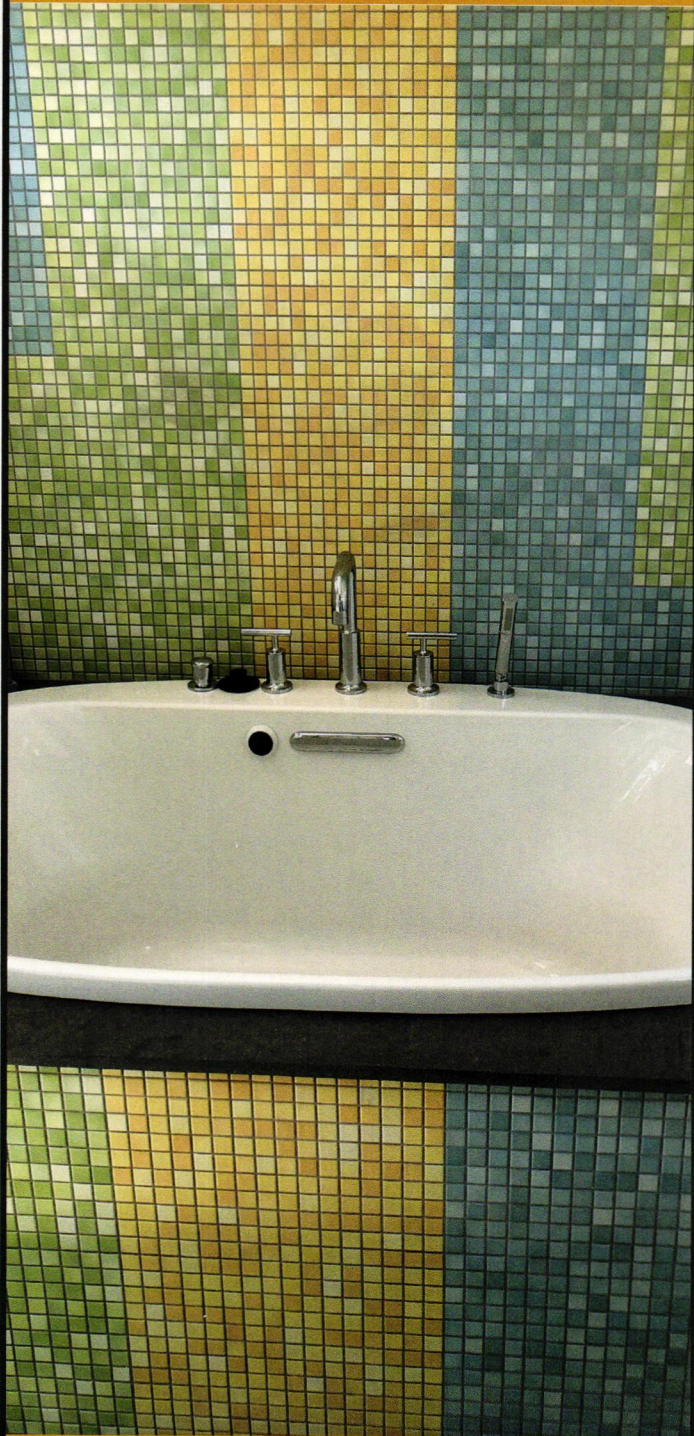


Modern tile for your modern home.



makeitmidcentury.com

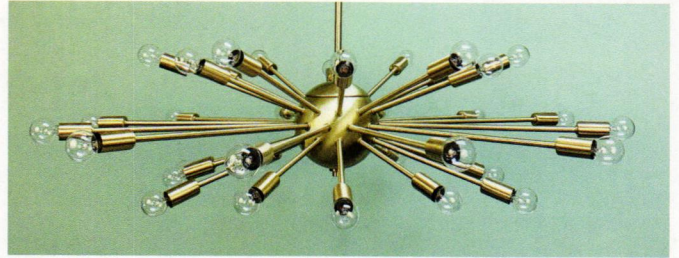
Color your Summer
with Modwalls Tile!



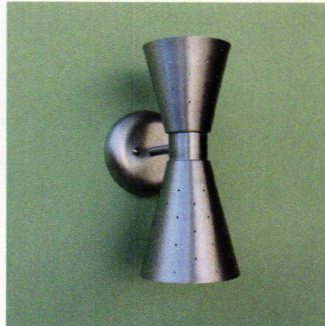
 **modwalls**[®]

modwalls.com / 877 439 9734

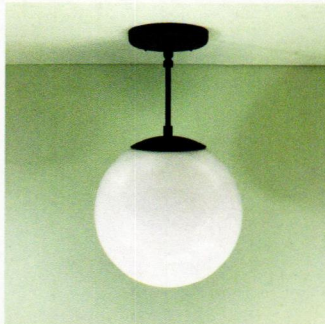
Practical
P R O P S



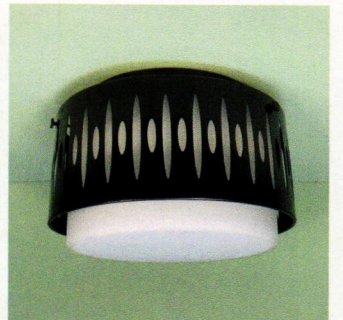
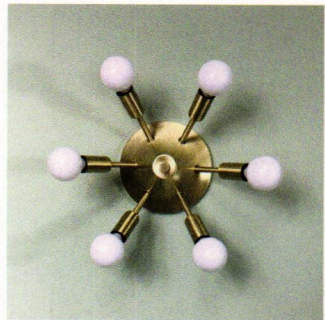
*Specializing in Authentic, Quality
Midcentury Reproduction Lighting*



*Pendants - Sputniks - Flush Mounts
Interior & Exterior Sconces
Bath Lighting - Floor & Arc Lamps
Desk, Table & Bedside Lamps
Restored Vintage Lighting*



Family-Owned & Operated since 1991



shop.PracticalProps.com



Modtraveler.net

AN ENTHUSIAST'S GUIDE TO MODERNISM



modboxUSA

Mid-Century Modern Mailbox

modboxusa.com | 919.781.8403

Your Chicago-Area
Mid-Century Modern &
Ranch Homes Specialist

MODERN ILLINOIS
modernil.com

Lou Zucaro
lou@modernil.com • 312.907.4085

Baird & Warner
754 W. Northwest Highway, Barrington, IL 60010

Hand Crafted
Lamps & Shades
MADE TO ORDER

THE
WAITING
IS THE HARDEST
PART

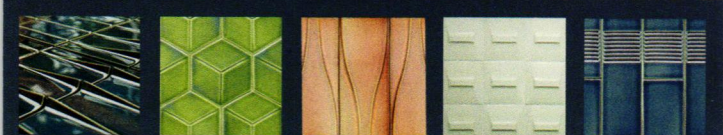
New! Virtual Shade Fitting

Take the guesswork out of finding the perfect match for your vintage lamp. Send us a picture of your lamp, we'll send one back, fitted with a shade of your choice.

@ModilumiLighting
www.Modilumi.com

MODCRAFT

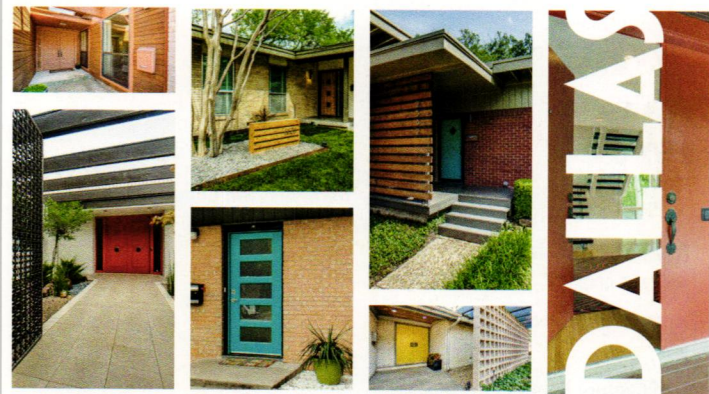
MODERN DIMENSIONAL TILE
HANDMADE IN BEACON, NEW YORK



TRANSFORM YOUR WALLS

mod-craft.com • 718-541-1160 • info@mod-craft.com

MODERN WELCOME



Opening doors all over the Dallas/Fort Worth area.
Can I open the door to your modern dream home for you?

ED MURCHISON | 214.395.7151 | ed.murchison@cdbfw.com



GLOBAL
LUXURY.

COLDWELL BANKER RESIDENTIAL BROKERAGE

Real estate agents affiliated with Coldwell Banker Residential Brokerage are independent contractor sales associates, not employees. ©2019 Coldwell Banker Residential Brokerage. All Rights Reserved. Coldwell Banker Residential Brokerage fully supports the principles of the Fair Housing Act and the Equal Opportunity Act. Owned by a subsidiary of NRT LLC. Coldwell Banker, the Coldwell Banker logo, Coldwell Banker Global Luxury and the Coldwell Banker Global Luxury logo are registered service marks owned by Coldwell Banker Real Estate LLC. 19K7U5_DFW_8/19



atomicmobiles.com
HANDMADE IN LOS ANGELES, CALIF.

WE'RE CLEANING HOUSE... AND LOOK WHAT WE FOUND!

Announcing Limited Edition, New Old Stock Original Remcraft bullet fixtures! Available in black or white, single or double, all with chrome swivels. This is your chance to own a genuine Remcraft Original!

Quantities are extremely limited, so act now!
Find out more at www.atomicremcraft.com



REMCRAFT
LIGHTING PRODUCTS

(800) 327-6585

www.atomicremcraft.com

atomicadvertisers

ACCESSORIES & ARTWORK

Atomic Mobiles 77
atomicmobiles.com

Blackwell Woodworks 16
blackwellwoodworks.com

**Christian Musselman
Illustration** 16
773-209-8506
christianmusselman.com

**Fireplace LLC (Robert
Singer Art)** 68
603-667-8173
robertsinger.art

Hip Haven 74
512-462-4755
hiphaven.com

Jillian Rene Decor 74
jillianrenedecor.com

Mac George Art Prints 12
macartprints.com

Model Landmarks LLC 81
modellandmarks.com

Modern Retrograde 81
etsy.com/shop/modernretrograde

TedStuff 79
561-272-0770
tedstuff.net

Time Warp Inventions 15
timewarpinventions.com

The Shag Store 19
760-322-3400
shagstore.com

ACCOMMODATIONS & MCM LIFESTYLE

Mod Traveler 76
modtraveler.net

Orbit In 69
orbitin.com

The Fredonia Hotel 68
936-564-1234
thefredonia.com

DESIGN RESOURCES & BOOKS

**Asheford Institute of
Antiques** 79
asheford.com

INTERIOR & EXTERIOR FINISHES

Clayhaus 27
503-928-3076
clayhaustile.com

CP Supply 67
406-414-0786
cpsupply.us

Make It Midcentury 74
makeitmidcentury.com

Modbox USA, Inc. 76
modboxusa.com

Modcraft 77
mod-craft.com

Modwalls 75
877-439-9734
modwalls.com

Motawi Tileworks 79
734-213-0017
motawi.com

Nana Wall System Inc 21
800-873-5673
nanawall.com

Viewrail 13
viewrail.com

LIGHTING

Lume Home LLC 26
lumehome.com

Modilumi 76
modilumi.com

Practical Props 75
818-980-3198
shop.practicalprops.com

Remcraft 77
800-327-6585
atomicremcraft.com

YLighting | YLiving 84
888-441-2781
ylighting.com

MID CENTURY REALTORS

Baird & Warner 76
312-907-4085
modernil.com

Margaret Mikkelsen 26
901-766-9004
modernmemphishomes.com

Mid Century Homes 17
mid-centuryhomes.com

**Midcentury Modern Dallas
Homes** 77
214-395-7151
midcenturymoderndallashomes.com

Modern Homes Portland 79
971-285-7955
modernhomesportland.com

MODERN FURNISHINGS

Copeland Furniture 2-3
copelandfurniture.com

FlipAtik 74
305-632-7827
flipatik.com

H3K Design 11
h3khome.com

Hunt & Noyer Furniture 27
313-731-2485
huntandnoyer.com

Joybird Furniture 6-7
855-855-9784
joybird.com

Kardiel 9
kardiel.com

Kasala 67
206-838-8000
kasala.com

Kerf Design 83
206-954-8677
kerfdesign.com

Matthews Fan Company 25
matthewsfanco.com



Unique Appliances 69
uniqueappliances.com

VINTAGE STORES & FURNITURE REHAB

**Evans Family Company -
Fagas Straps** 81
858-461-8069
fagasstraps.com



**MOTAWI
TILEWORKS**

DISTINCTIVE AMERICAN ART TILE
FOR HOMES AND PUBLIC PLACES
734.213.0017 | motawi.com |   

Find a cool Mid-Century.
Sell your Contemporary home.



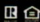
Marisa Swenson
MODERN HOME EXPERT



MODERN HOMES
PORTLAND

971-285-7955
Marisa@ModernHomesPortland.com
ModernHomesPortland.com

DWELL REALTY

Licensed OR & WA Broker


Would You Like To Be A Mid-Century Modern Antiques Dealer?

You Can:

- *Start your own Mid-Century Modern Antiques Business
- *Choose the hours you wish to work
- *Become a "Certified" Decorative Arts Appraiser
- *Complete an internationally recognized 12 Volume Course with Diploma & Appraisal Certification (PACC & USPAP)



www.asheford.com

For A FREE Course Prospectus
Booklet:

www.asheford.com

Email: asheford@mail.com

Toll free: 877-444-4508

Or write to:

Asheford Institute: 981 Harbor Blvd.
Ste. 3, Dept. 275ATR15 Destin, FL 32541

ButterFly Box / Uptown Box RetroBox / RetroBox Wall Mount

The perfect curb appeal for your home, office, condo or development. Made in the USA.



ButterFly Box



Uptown Box



RetroBox



RetroBox Wall Mount

For more information, visit tedstuff.net.

resources

Blank Slate, page 22

Custom cabinets: True Home Restorations, (616) 452-8561 or truehomerestorations.com.
Pulls and knobs: Rejuvenation, (888) 401-1900 or rejuvenation.com.
Countertop: Formica laminate in Dogbone White, (800) 367-6422 or formica.com.
Backsplash: No longer available.
Appliances: Whirlpool, (866) 698-2538 or whirlpool.com.
Light over the sink: Rejuvenation, (888) 401-1900 or rejuvenation.com.
Tea kettle: KitchenAid, (800) 541-6390 or kitchenaid.com.
Canisters: Vintage.
Framed bird print: Vintage.
Custom railing around stairs: Greg VanderMaas for True Home Restorations, (616) 452-8561 or truehomerestorations.com.

Desert Sanctuary, page 28

Mod West Ranch is available for booking at homesteadmodern.com/mod-west-ranch.
Construction: Most of the construction work was coordinated through Homestead Modern. Visit homesteadmodern.com.
Pioneertown, California: Visitors are welcome to this 1940s era town/pastiche of the 1880s Old West. Read more at visitpioneertown.com.
Antique Galleries of Palm Springs: 505 Industrial Place, Palm Springs, CA, (760) 322-8640.
Palm Springs Vintage Market: Held the first Sunday of the month at 2300 E. Baristo Road, Palm Springs, CA, palmspringsvintagemarket.com.
Ponchos: Joshua Tree Blanket Company, joshuatreeblanketco.com.
Malm fireplaces: (707) 523-7755 or malmfirplaces.com.
Dining table: Urban Americana, (562) 454-0071 or urbanamericana.com.

Style, Form & Function, page 38

Vintage and vintage-reproduction items in the home have been collected from a variety of sources by the homeowner, including:
Palm Springs Vintage Flea Market, (760) 534-7968 or palmspringsvintagemarket.com.
The Modernism Show and Sale at the Palm Springs Convention Center, visit palmspringmodernism.com.
Antique Galleries of Palm Springs, (760) 322-8740 or antiquegalleriespalmsprings.com.

Palo Verde Garden Center, (760) 832-8588 or paloverdegardens.com.
Modernica, (323) 933-0383 or modernica.net.
Design Within Reach, (203) 614-0600 or dwr.com.
Misty's Consignments, (760) 770-4663 or mistysconsignments.com.
Pelago Palm Springs, (760) 322-3999 or pelagopalmsprings.com.
Room & Board, (800) 301-9720 or roomandboard.com.
H3K Design, (760) 325-5420 or h3kdesign.com.
Lot 58 Auctions, call (760) 895-1870.
Retro Etcetera, (760) 327-7387 or retroetcetera.com.
John Sells Stuff, (909) 353-5636 or facebook.com/Johnsellsstuff.
Cargo Consignments, call (760) 773-3130.
Victoria's Attic Antique Mall, (760) 323-4440 or victoriasatticantiquemall.com.
Spoonflower, visit spoonflower.com.
Craigslis, visit craigslis.org.
eBay, visit ebay.com.
Etsy, visit etsy.com.
Era Gallery, 590 Nevada St. Suite D Redlands, CA. (909) 709-6760 or instagram.com/era_gallery.
Modern for All, 1308 Monte Vista Avenue Suite 7, Upland, CA. (909) 931-0665 or modernforallshop.com.
Haus of Re[x], 2500 North Palm Canyon Drive Suite B1 Palm Springs, CA. (760) 656-0543 or rex.haus.
Spaces, 68929 Perez Rd Suite K, Cathedral City, CA. (760) 770-5333 or spacesonperez.com.
Pasadena Antiques & Design, 330 South Fair Oaks Ave, Pasadena, CA. (213) 631-0500 or antiquesofpasadena.com.
Landscaping: Desert Landscape Design, (760) 285-0773 or dldpalmsprings.com.

A Garden in the Atrium, page 50

See more of Tyler and Jessica's home on Instagram, [@valleyoftheatrium](https://www.instagram.com/valleyoftheatrium).
Hanging light in atrium: Original to home.
Dining room table & chairs: Vintage Chromecraft set.
Pair of orange chairs in great room: Modernica, (323) 933-0383 or modernica.net.
Light orange side chair in great room: Japanese-made chair sourced from Not Another Mod Snob, instagram.com/notanothermodsnob.
Wall unit in great room: Vintage unit sourced from Midway Antiques, (916) 779-6252 or midwayantiquemall.com.
Desert painting in great room: By Guy Long, owner of Rose City, visit rosecityca.com.

Black sofa in great room: Modernica, (323) 933-0383 or modernica.net.
Green chair in living room: Milo Baughman chair sourced from a local dealer.
Kitchen cabinetmaker: Kerf Design, (206) 954-8677 or kerfdesign.com.
Bar chairs: Modernica, (323) 933-0383 or modernica.net.
Pendant lights in kitchen: Schoolhouse Electric, visit schoolhouse.com.
Dressers in bedroom: Glenn of California originals.
Bed frame: Modernica, (323) 933-0383 or modernica.net.
Bedroom lights: George Nelson, (888) 798-0202 or store.hermanmiller.com.
Bedroom fan: Home Depot, (800) 430-3376 or homedepot.com.

Mid Mod Getaways, page 60

Watergate Hotel, (844) 617-1972 or thewatergatehotel.com.
The Jupiter, (503) 230-9200 or jupiterhotel.com.
The Robey, (872) 315-3050 or therobey.com.
Kate's Lazy Meadow, (845) 688-7200 or lazymeadow.com.
The Fredonia, (936) 564-1234 or thefredonia.com.

Modern Mid Century, page 64

For more on Michael, visit midcenturycustomhomes.com or follow him on Instagram [@midcenturycustomhomes](https://www.instagram.com/midcenturycustomhomes).
For more on Christine, visit breathedesignstudio.com or follow her on Instagram [@breathedesign](https://www.instagram.com/breathedesign).
Architect: A.D. Stenger.

In An Office Far, Far Away, page 70

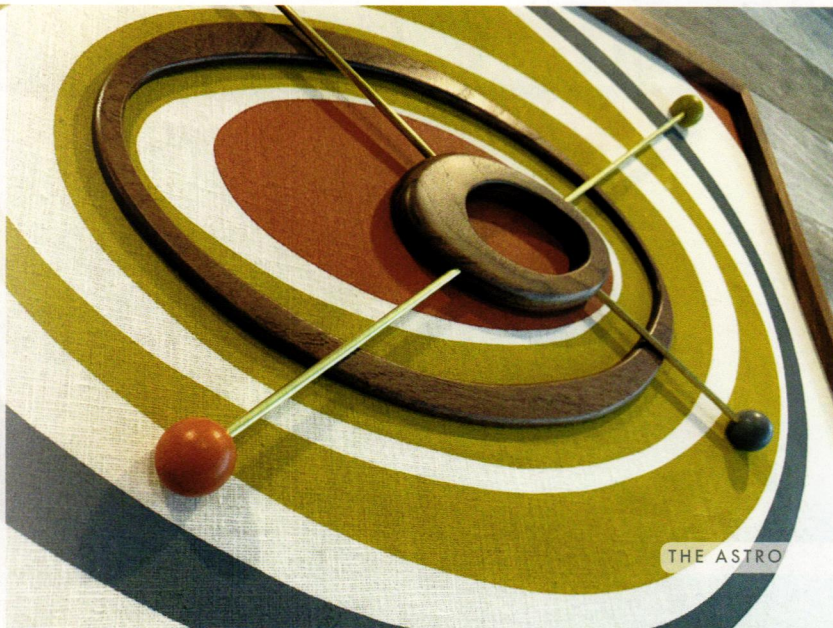
Clear acrylic office chair: AllModern, (844) 860-3709 or allmodern.com.
Pair of gray and white chairs: Regan & Smith Antiques, visit chairish.com/shop/reganandsmith.
Orange sofa: KT Antiques & Industrial Finds, visit facebook.com/KT-Antiques-Industrial-Finds-104996317786319.
Chrome floor lamp: Modernway, visit psmodernway.com.
Lucite Stereo console: CooCooU Modern Antiques, visit 1stdibs.com/dealers/coocoo27/shop.

MID CENTURY MODERN
STYLED WALL ART

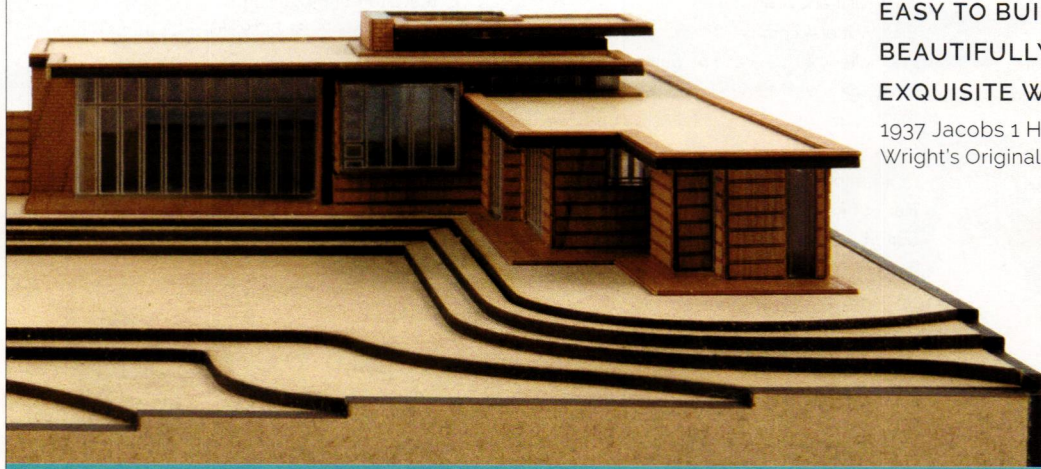


- CUSTOM DESIGNS
- FREE DOMESTIC SHIPPING
- 100% HANDMADE
- MADE IN THE USA

ETSY.COM/SHOP/MODERNRETROGRADE



BUILD A FRANK LLOYD WRIGHT MASTERPIECE



EASY TO BUILD.

BEAUTIFULLY ACCURATE SCALE MODELS.

EXQUISITE WOOD CONSTRUCTION.

1937 Jacobs 1 House – 10" L x 10" W x 2.5" H
Wright's Original Usonian "Affordable" Home

25% OFF & FREE SHIPPING

Use Discount Code ARJacobs
ModelLandmarks.com
More models available online



Official US distributor
since 1945

Replace
broken or stretched
Fagas Straps!

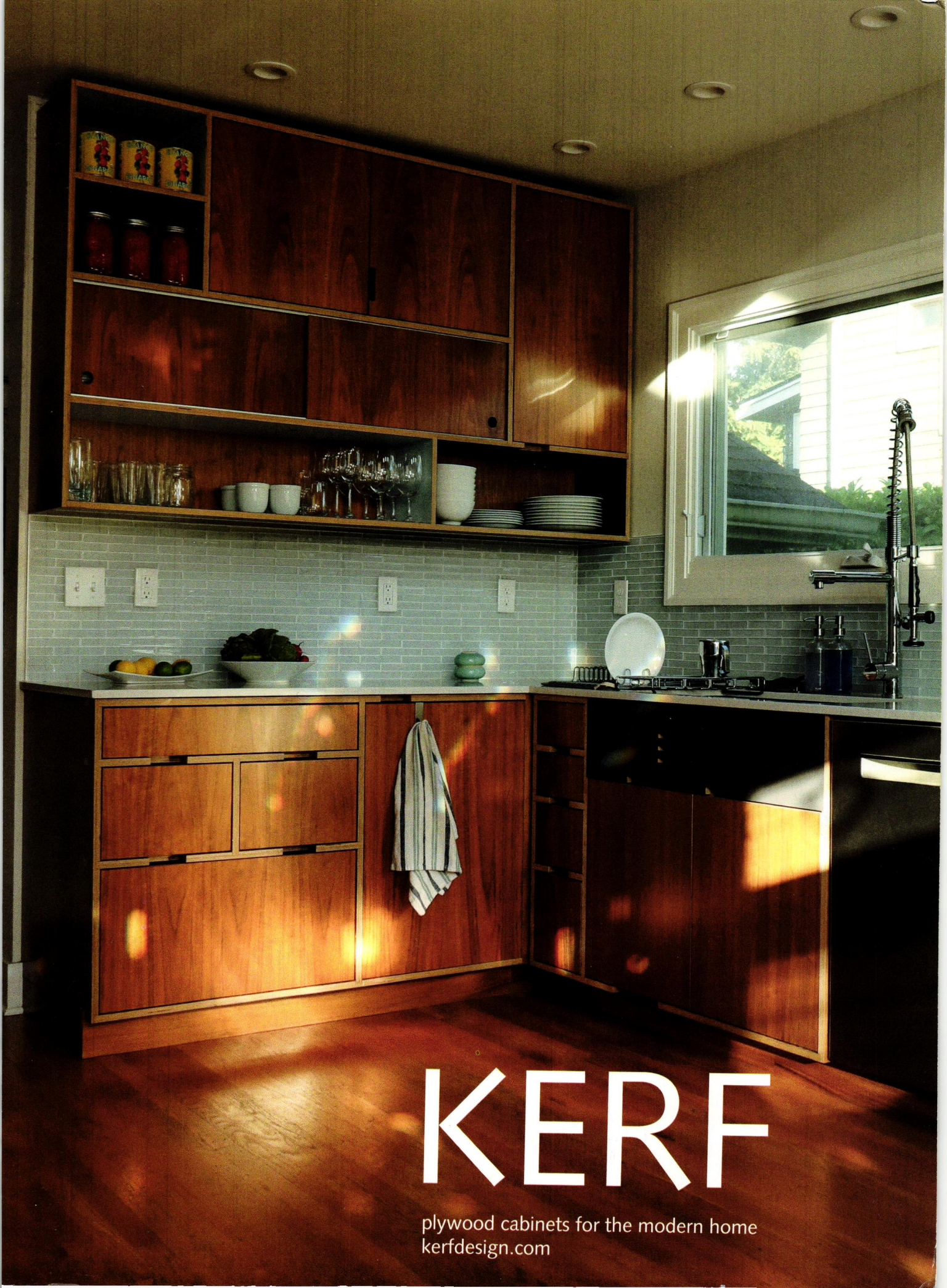
www.fagasstraps.com
info@fagasstraps.com 858.461.8069

last look



Splash from the Past

Some things are timeless. This family in the 1960s enjoyed summer in mid century style, complete with a backyard pool and a fringed parasol-style umbrella. Here's to a happy summer that never goes out of style.



KERF

plywood cabinets for the modern home
kerfdesign.com



YLIGHTING

The Best in Modern Living



LIFE. ILLUMINATED.

Shop YLighting.com or Call (888) 441-2781

EXCLUSIVE LUNA 3-TIER LED CHANDELIER from Gabriel Scott