

atomic

MID CENTURY MARVELS

ranch



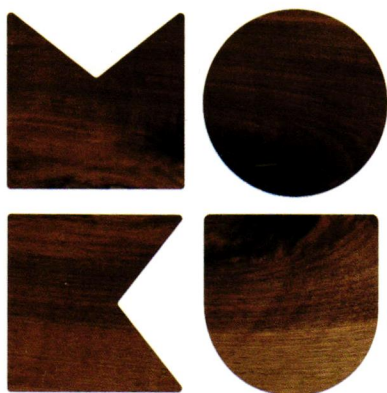
Tour Stunning Spaces:

**William Cody,
A. Quincy Jones
and William Krisel**

**Statement-Making Style
With Pattern and Color**

Take a Dip:

Pool Party Must-Haves & Bar Cart Necessities



artisan furniture

Moku Artisan

Handcrafted and sustainably sourced wood furniture pieces are built to last a lifetime. The high-quality pieces are designed with attention to detail, allowing them to craft unique and sleek pieces whilst remaining true to the soul of the wood.

Shop online at www.moku-artisan.com and
Instagram [@moku.artisan](https://www.instagram.com/moku.artisan)



Presents a new print:
"THE SUITE OF THE FUTURE"



Inspired by Disneyland's lost attraction "The House of the Future," the Howard Johnson Resort in Anaheim has created "The Suite of the Future," a real hotel suite that pays homage to the original space age showhouse. Howard Johnsons asked Shag to create a signature piece of art to hang in the living room of that space, and the result is this 23 color signed, numbered silk screen print, available exclusively at the Shag Store.



THE SHAG STORE • 745 N. PALM CANYON DRIVE, PALM SPRINGS • SHAGSTORE.COM

Contents *spring 2022*



FEATURES

30 The Perfect Palette

The new owners of this 1957 home kept many of the existing features, enhancing them with vibrant prints and colors, as well as personal touches, in every space.

40 It's Hip to Be Square

A two-year renovation and restoration project brings a 1960s A. Quincy Jones condo back to its former glory.

50 Atomic Orange

Vibrant colors, retro furnishings, fresh artwork and modern updates give this 1959 William Krisel home new life.

64 The Vibe: Mid-Mod Spring Cleaning

Making form meet function? Cutting the clutter? Yes, this annual tradition affects how your mid-century space looks and feels.

68 A Garden Apartment Makeover

This small Palm Springs vacation condo was transformed from a tired "tennis unit" to a retro gem.

72 The Man Who Defined the Desert

Learn about William Cody, the man whose name became synonymous with Desert Modernism.

76 Retracing Mid Century

Tour the kitchen and dining room to see a colorful, yet classic, reimagined MCM design in the latest installment of *Atomic Ranch's* 2021 Project House series.

30



DEPARTMENTS

- 8 Editor's Letter
- 10 Web Update
- 12 Cool Stuff
- 16 Period Picks
- 20 Curb Appeal
- 24 Modern Makers
- 26 Retro Road Trip
- 86 Sources
- 90 Last Look

40



cover

Cover photography by Dave Folks

Cover Design by Gabby Oh



ATOMIC RANCH (ISSN 1547-3902) Issue 73, SPRING 2022. *Atomic Ranch* is published 6 times per year (Spring, Summer, Renovation Guide, Fall, Winter, Design Issue) by Engaged Media LLC, 2220 Sedwick Road, Durham, NC 27713. Periodical postage paid at Durham, NC, and additional mailing offices. **POSTMASTER:** Send address changes to Atomic Ranch c/o Engaged Media LLC, Cerveo, 101 Workman Ct., Eureka, MO 63025. © 2022 by Engaged Media LLC. All rights reserved. Reproduction of any material from this issue in whole or in part is strictly prohibited. GST #R55050365RT001 Canada Post: Publications Mail Agreement #40612608. Return undeliverable Canadian addresses to: PITNEY BOWES, INC., P.O. Box 25542, London, ON N6C 6B2, Canada.

MATTHEWS

FAN COMPANY

Few things enhance a space like the timeless designs of a Matthews fan. Whether still or quietly circulating air to improve the comfort and health of a room, our thoughtfully crafted products complement any aesthetic. Backed by a limited lifetime warranty, our fans are of the highest quality and will dutifully last for years to come. Visit us to find a showroom near you. *Shown is the Nan ceiling fan in matte white with walnut blades.*

www.MatthewsFanCo.com



We won.

Best Furniture Store

in the Coachella Valley.



Shop our showroom or online.

H3K HOME +
DESIGN

501 South Palm Canyon Drive
Downtown Palm Springs
(760) 325-5400

www.h3khomeanddesign.com



editor's letter



PHOTO BY MARK MENDEZ

DESERT DESTINY

GROWING UP IN SOUTHERN CALIFORNIA, Palm Springs has always been a part of my life.

When I was in grade school, my grandmother's new husband had a house right on the golf course in the Sunny Dunes neighborhood of town. We'd swim in the pool in the afternoons, trying not to burn our toes on the blazing-hot coping. In the evenings, we'd play Monopoly on the shag carpet in the sunken living room. While I attended high school, Palm Springs was my spring break destination; later on, it served as a go-to for bachelorette parties or simply a relaxing weekend getaway.

Nevertheless, I would have never guessed how much Palm Springs would teach me. In those early days, the town wasn't the renowned modernist mecca it is today. But, thanks to the pioneering few who banded together to bring awareness to its history, as well as its architectural significance, to the forefront, along with those who eventually founded, and currently run, Modernism Week, Palm Springs has an international distinction as a historical gem.

Palm Springs has taught me what it is to celebrate and advocate on behalf of something you're passionate about saving. It's also taught me the power of community and what can be accomplished with like-minded folk. Palm Springs reminds me how wonderful it is to connect with fellow modernists.

And so, with this issue, I hope you can connect with all the wonderful things Palm Springs does to keep Mid Century Modern fans continually inspired, motivated and educated.

I also hope this issue helps spotlight not just the homes, but also the people who make that wonderful city what it is.

Jackie Torres

Get connected!

Email: editor@atomic-ranch.com • Online: atomic-ranch.com • [@theatomicranch](https://www.instagram.com/theatomicranch)

atomic ranch

EDITORIAL

Content Director and Brand Leader: Jackie Torres
Managing Editor: Amy Maclean
Associate Editor: Ian McMaster
Digital Brand Manager: Kris Christensen
Web Editor: Jolene Nolte

DESIGN

Design Director: Gabby Oh
Senior Art Director: Kelly Lee

CONTRIBUTORS

Lindsay Jarvis, Autumn Krause, Erin Lawrence,
Robert Maurer, Ken MacIntyre, Laura Shimko

CONTRIBUTING PHOTOGRAPHERS

Chase Daniel, Dave Folks, Caroline Greystock, Bref Gum,
Ken MacIntyre, Robert Maurer, Stephen Schauer

ADVERTISING

Mike Giancola: Executive Vice President Sales
(380) 223-8197

advertise@engagedmedia.com

Suzu Bailey: Account Representative

Julie Hale: Account Representative

Christina Walker: Account Representative

Sebastian Tirkey: Advertising Traffic Coordinator

OPERATIONS

Manish Kumar Mishra: Operations Manager
Surajpal Singh Bishit: Prepress Manager
Chandan Pandey: Production & Newsstand Circulation
Manager

EDITORIAL, PRODUCTION & SALES OFFICE

2220 Sedwick Road, Durham, NC 27713
www.atomic-ranch.com
(800) 764-6278, Fax (919) 516-0950

ATOMIC RANCH (ISSN 1547-3902) Issue 73 Spring 2022. *Atomic Ranch* is published 6 times per year (Spring, Summer, Renovation Guide, Fall, Winter, Design Issue) by Engaged Media LLC, 2220 Sedwick Road, Durham, NC 27713. Periodical postage paid at Durham, NC, and additional mailing offices.

POSTMASTER: send address changes to Atomic Ranch c/o Engaged Media LLC, Cenveo, 101 Workman Ct., Eureka, MO 63025. © 2022 by Engaged Media LLC. All rights reserved. Reproduction of any material from this issue in whole or in part is strictly prohibited. GST #R55050365R001 Canada Post: Publications Mail Agreement #40612608. Return undeliverable Canadian addresses to: PITNEY BOWES, INC., P.O. Box 25542, London, ON N6C 6B2, Canada.

CUSTOMER SERVICE

ENGAGED MEDIA LLC
2220 Sedwick Road
Durham, NC 27713

SUBSCRIPTIONS, ADDRESS CHANGES,
RENEWALS, MISSING OR DAMAGED COPIES AND FOREIGN
INQUIRIES
(800) 764-6278
subscriptions@engagedmediainc.com
customerservice@engagedmediainc.com

BACK ISSUES

www.engagedlifestyle.com

BOOKS, MERCHANDISE, REPRINTS
(800) 764-6278

LETTERS TO THE EDITOR, NEW PRODUCTS OR TO
CONTRIBUTE A STORY OR PHOTO
editor@atomic-ranch.com

SUBSCRIPTION RATES

\$29.95/1 year, \$52.95/2 years. Foreign, \$51.95 per year,
\$96.95 per 2 years payable in U.S. funds.
Atomic Ranch single copy price is \$7.99;
Renovation Guide and Design Issue price is \$9.99.
Please allow 6 to 8 weeks for new subscriptions to begin.

SIXSAILS GROUP

Scott Hall: CEO
Prashant Upadhyaya: President
Carrie Rubalcaba: Human Resources
Malaikah Choudhry: General Counsel

ENGAGED[®] MEDIA LLC

ENGAGED MEDIA LLC

Emil Reister: CEO

Sonal Mehta: COO

Mike Giancola: Executive Vice President Sales

Erin Masercola: Content Director

Terry Rollman: Audience Development Director

This magazine is purchased by the buyer with the understanding that information presented is from various sources from which there can be no warranty or responsibility by Engaged Media LLC as to the legality, completeness or technical accuracy.

GST #R55050365R001
Canada Post: Publications Mail Agreement #40612608
Return undeliverable Canadian addresses to:
PITNEY BOWES, INC.
P.O. Box 25542
London, ON N6C 6B2, Canada



GENERATION

Folding Glass Walls by NanaWall

Drawing from four decades of innovation, NanaWall once again creates the most advanced family of folding glass walls.

Clean Aesthetics: The slimmest profiles available and minimal exposed hardware.

Flexible Stacking: Unique floating panel sets can stack either to the left or right.

Barefoot Friendly: Sill design offers weather resistance while maintaining a low-profile indoor-outdoor transition.

Easy Operation: Smoothest and easiest operation of any folding glass wall.

Secure & Durable: Air, water, and forced entry tested. Entry doors tested to 500,000 and folding panels to 20,000 open and close cycles.

Available in
three different
material choices:



ALUMINUM



WOOD



CLAD

Visit NanaWall.com
800 873 5673
inquiries@nanawall.com

NanaWall[®]
Boundaries **Unbound**[®]

atomic-ranch.com

Keep tabs on us and also check out these additional online reads.



PHOTO: CHAD MELLON

A Desert Sanctuary Takes it Outside

Mod West Ranch continues to inspire, and we take a look at the different outdoor zones on this property where Mid Mod meets Old West. Then, find inspiration for your own exterior!

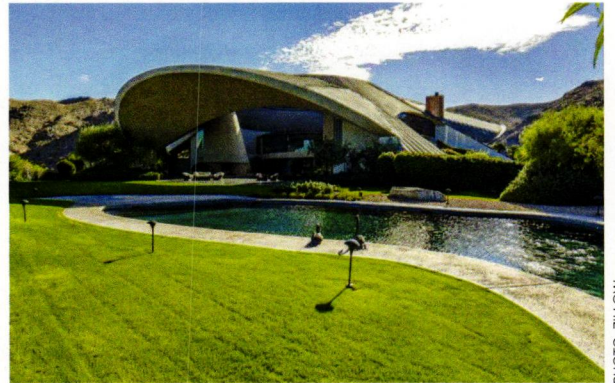


PHOTO: ZILLOW

Modernist Index: A Mod Masterpiece— The Bob Hope House

Designed by architect John Lautner for famous comedian, actor and entertainer Bob Hope, this Palm Springs home remains a unique modernist gem. Take a peek inside and learn about the home's design and history.



PHOTO: MARK MENDEZ

Know Your Zone! How to Pick Plants

If you're looking ahead to warmer months and starting to plan for your landscaping, discover the basics regarding hardiness zones and where to begin as you consider what to plant.



PHOTO: GREYSHOCK PHOTOGRAPHY

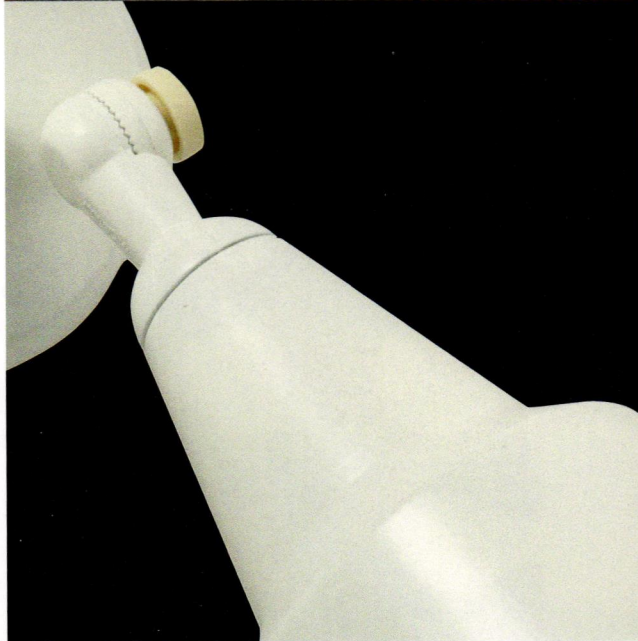
Web Exclusive With Dani Nagel

Learn more about the intersection between Dani's work in the fashion industry and interior design with a bold and unique MCM flair!



Follow us online on
Facebook, Pinterest and
Instagram daily!

LOOK FOR THIS SYMBOL
THROUGHOUT THE ISSUE
TO SEE WHAT EXTRA
CONTENT YOU'LL FIND
ONLINE.



Modern Classics. In stock now.

With classic midcentury modern styling and durable, baked enamel finishes, RETRO by Remcraft fixtures are built to their original 1950's specifications and quality standards (with a few modern improvements) to ensure unmatched durability and long, trouble-free service. They are available in a wide variety of styles and finishes to suit any decor, indoors or out. What's more, most styles are in stock and ready to ship. Give us a call or visit our website to find out more.

800.327.6585 | atomicremcraft.com

RETRO
BY REMCRAFT

coolstuff

Cocktail Hour

It's 5 o'clock somewhere! Keep the party 'rolling' with these bar carts and bar accessories.

By Ian McMaster



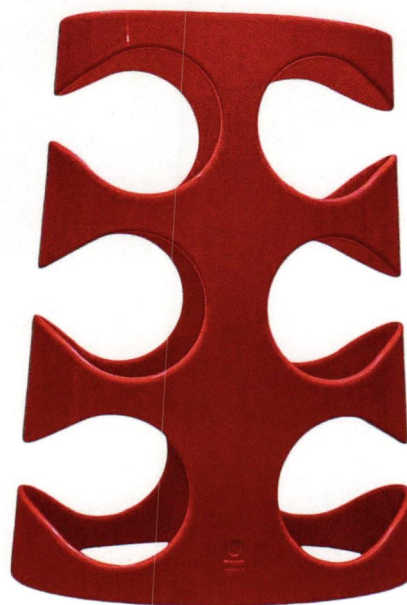
French bar cart from the 1950s, \$2,000. Offered by Fins De Siecles; exhibited on Incollect. (617) 926-0004 or incollect.com.



Arthur Umanoff bar cart, offered by Orange Los Angeles; exhibited on Incollect. For pricing, (617) 926-0004 or incollect.com.



Atomic swizzle sticks and old-fashioned glasses. For pricing, (760) 354-9154 or destinationpsp.com.



Red Umbra Grapevine wine rack, \$260. (855) 549-9990 or cherish.com.



I Dream of Palm Springs Collins glasses, \$55. Visit atomicdrinkware.com.



Mid Century Modern art for today!

Scooter

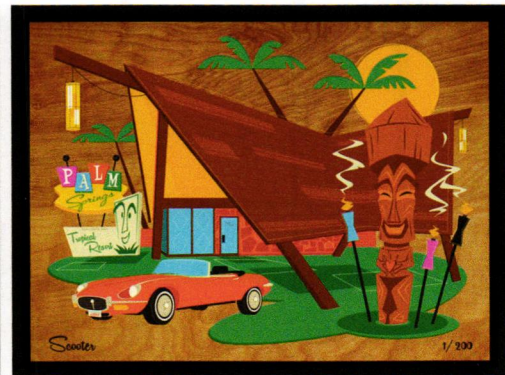
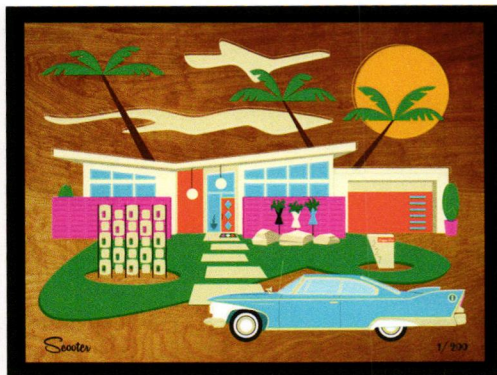
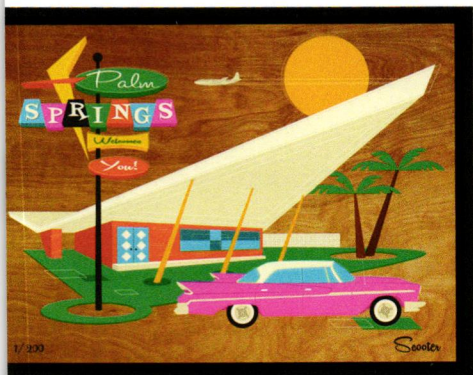


“Changing the world through Creativity, Hope and Love...”

Have you ever seen a piece of art that you wished you could live inside of? I'm Scooter, a painter, illustrator, former Disney Animator and lover of all things mid-century modern. It's my heart to create art that transports you back to the romance and nostalgic memories of the mid-century age.

As an artist, I get so much joy and excitement about changing the world through creativity, hope and love. We partner with an amazing organization called Acres of Love, whose mission is to rescue and care for AIDS Orphans and those with special needs in South Africa. Whenever you add my art or merchandise to your collection, a portion of what you spend goes to Acres of Love.

So, grab a martini, put on some Sinatra, and let's change the world together!



Use Promo Code: ATOMICRANCH to save 20% on regular prints and merchandise at: artofscooter.com

coolstuff

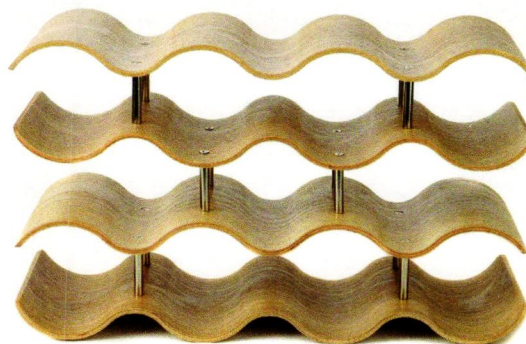


Bar cart in gold, \$194.99.
(844) 347-5529 or wayfair.com.

**Acacia wood
mid-century two-tier
bar cart, \$199.99.**
(877) 967-5362 or
worldmarket.com.



**Walnut with Butternut
Kumiko cabinet,
\$4,200.** (406) 224-7855 or
philomathwoodworks.com.



**Sillitto 14-bottle tabletop wine
bottle rack by Ivy Bronx, \$154.99.**
(844) 347-4978 or wayfair.com.



**Bradley iron bar cart,
\$420.** (844) 850-6623 or
allmodern.com.



Gold bamboo bar gift set, \$183.87.
(888) 965-6275 or markandgraham.com.



Photo by Sara Ligorria-Tramp / www.stylebyemilyhenderson.com

 **NORELL**

Arne Norell original Sirocco Chair

Handmade by Norell furniture since 1966

www.norellfurniture.com

Order your Siroccos at: info@norellfurniture.com

periodpicks



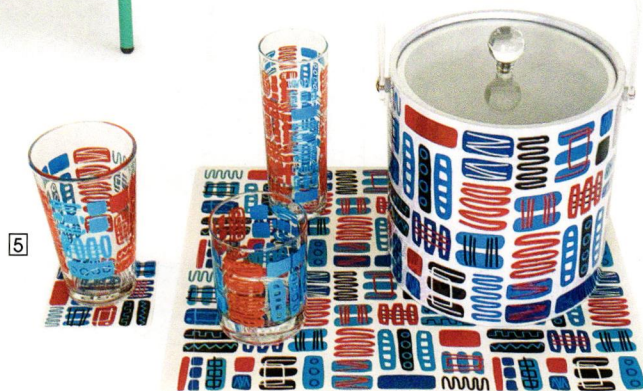
Color-Popping Pool Party!

Here are our picks to turn your poolside into a festive, year-round destination.

By Ian McMaster



1. Pool party beach towel, \$45. (760) 322-3400 or shagstore.com.
2. Mariposa 8.5-foot Painted Lady Series patio umbrella in hot pink, \$539. (844) 435-1144 or h3khome.com.
3. Rapson high-back lounge chair, \$1,695. (877) 445-4486 or lumens.com.
4. Zina outdoor chair in aqua, \$149. (888) 746-3455 or article.com.
5. Mambo design glassware, placemat, coaster and ice bucket. For pricing, (760) 354-9154 or destinationpsp.com.





info@kasala.com
206.838.8000



MODERN HOME FURNISHINGS
DOWNTOWN SEATTLE | BELLEVUE DESIGN MARKET | KASALA.COM

periodpicks



6. Pacific Pagoda 8.5-foot umbrella with fringe edge, \$1,169.10. (800) 536-7551 or ballarddesigns.com.



7. Vista outdoor side table, \$249. Visit joybird.com.



8. Tessa sun bed and end table set, \$1,345. (973) 276-0444 or inmod.com.



9. Summer acrylic ice bucket, \$75 each. (760) 354-9154 or destinationpsp.com.



10. Lollygagger bar cart by Loll Designs, \$1,195. (888) 222-4410 or 2modern.com.

we make **mid-century dreams** come true.



Every day the **Mid-Century Homes Team** obsesses about finding the coolest mid-century homes in the nation's most livable city. Scenic **Boise, Idaho** is home to over 11,000 mid-century gems at attainable prices. With top-shelf customer service and a deep expertise, this Dream Team is ready to show off the best of Boise:

MID-CENTURYHOMES.COM



mid-century
homes

by Anthology



TO LEARN MORE ABOUT CLASSIC PALM SPRINGS ARCHITECTURAL FEATURES, GO TO ATOMIC-RANCH.COM

Cody Character

This iconic Rancho Mirage home can teach you a lot about the finesse of Desert Modernism from one of its masters, William Cody.

Text and Photography by Erin Lawrence

At the Jaffe House in the Rancho Mirage area of Greater Palm Springs, myriad elements combine to make this home both interesting and also incredibly private.

For starters, the double doors you see here don't open directly into the house, as you might expect. Instead, they open onto a courtyard with a covered colonnade and stone pathway that lead deeper into the property and to the house.

Architect William F. Cody drew on many of the principals of modern architecture in the home's design, using floor-to-ceiling windows inside. These are cleverly shaded by the deeply overhanging roof and plenty of greenery. Palms and yucca plants combine with various cacti to add plenty of interest to the desert landscaping.

SLUMPSTONE WALLS CREATE SOFTNESS

The brick wall is what's known as "slumpstone," the process by which the blocks are cast but are then removed from the mold before they're completely set. The block "slumps" under its own weight, giving it a rounded appearance that mimics traditional adobe or mud bricks. When stacked in walls such as this one, they give the masonry a softer appearance and help create those simple, clean lines that Mid Century Modern architecture is known for.

SEE ICONIC PALM SPRINGS HOMES AND CELEBRITY HOUSES

If you're into architecture or you simply want to learn about the beautiful properties and homes in Palm Springs, Jaffe House is just one of the historic properties you can learn about by going on a self-guided, self-driving modern architecture tour.

ModernToursPalmSprings.com offers guided tours that run on your smartphone and include photos, a narrator and mapping to get you to each stop. Visit ModernToursPalmSprings.com for more information.

MODERNMEMPHISHOMES.COM



MODERN LIVES IN MEMPHIS



4901

hello

CRYE-LEIKE MARGARET MIKKELSEN
REAL ESTATE SERVICES | modern memphis homes

direct: 901-896-2992 office: 901-754-0800
mobile: 646-898-6901 Serving Memphis, TN
margaret.mikkelsen@clhomes.com



FRANK
LLOYD
WRIGHT
COLLECTION

®/TM/© FLWF

MOTAWI TILEWORKS

DISTINCTIVE AMERICAN ART TILE
FOR HOMES AND PUBLIC PLACES
734.213.0017 | motawi.com



Choose Your Custom Peace



The mid-century era was a time of unparalleled creativity and has produced some of the most iconic, timeless, and refined works to date. We are inspired by this spirit and carry it forward by infusing it into everything we create. Every piece we make is handcrafted from the finest quality materials and built to last forever.

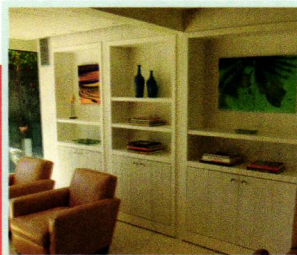
casaramodern.com 714 317 9342



Casara Modern

A Division of Eichler Siding

The Cool Combed Panel Back from the Mid-Century— Weldtex!



Accent Walls-Siding-Wainscot-Ceiling Tiles

Featured in new builds Starlight Village and Atomic Ranch Project House in Austin, matching original Weldtex panels in the Orbit In and the Kirk Douglas Estate in Palm Springs to name just a few!

- ✓ 3/8" Pine plywood tiles create classic checker board pattern, or sheet for accent walls and wainscot.
- ✓ Plywood works great for paint grade or clear coat.
- ✓ T & G Stain Grade 3/4" Hardwood Wall Panel Wainscot/ Accent Walls
- ✓ Customers tell us the plywood tiles and panels are excellent matches to their pre-existing walls and ceilings best choice for paint or clear coat.
- ✓ Hardwood (cherry, maple, oak) tongue and groove 5/16"x3 1/4" wall panel for excellent staining and elegance.

See our website www.vintageplywood.com for details and pictures.

info@vintageplywood.com | vintageplywood.com | 415.883.5300



Breathe Design
Studio

Our interiors tell stories of belonging, comfort, and well-being.
breathedesigntudio.com | 512.994.0350 | [@breathedesign](https://www.instagram.com/breathedesign)

modernmakers



ABOVE, LEFT: CINEMATIC HISTORY LIVES ON AT BOOMERANG FOR MODERN WITH A CUSTOM-MADE FOLDING SCREEN BY SOL BLOOM. IT WAS ORIGINALLY CREATED IN THE MID-1950S FOR A NEW YORK FUR SALON, BUT IT WAS ALSO USED IN THE 1989 MOVIE, *SLAVES OF NEW YORK*, THAT STARRED BERNADETTE PETERS.



ABOVE, RIGHT: A HARVEY PROBBER LEATHER SECTIONAL FROM A PROMINENT HOME IN PALM SPRINGS (DESIGNED BY E. STEWART WILLIAMS) IS JUST THE PIECE TO CAPTURE CUSTOMERS' IMAGINATIONS AS THEY CONSIDER ALL THE CONVERSATIONS THIS PIECE HAS OVERHEARD—AND ALL THE CONVERSATIONS YET TO COME!

Desert Treasure

Boomerang for Modern is one of the premier Mid Century Modern destinations in Palm Springs. Its owner, David Skelley, is the reason.

Author: Autumn Krause

Photography: Courtesy of Boomerang for Modern

Portrait: Stephen Schauer

David Skelley, owner of Boomerang for Modern, was introduced to Mid Century Modern design through his friend's collection in the mid-1970s. For David, it was a pivotal moment.

"Something just clicked," he said. "I fell in love with every facet of the style—from its optimism to the exploration of then-new materials and the visual lightness of the pieces."

He began curating his own collection of Mid Century Modern pieces. The collection was simply for personal enjoyment, although David dreamed of building it into something more.

David's company was caught in the tailwinds of the Mid Century Modern design surge, propelling him to the forefront of the movement. He explains that as a result, "I made the big



decision to take Boomerang Modern from San Diego to Palm Springs. It was my best move ever!"

David's store is now a bustling destination for Mid Century Modern lovers. As the store's curator, he's able to preview some of the finest pieces available. Through his reputation, he's able to acquire items right from the original families—which means he gets the bonus of the wonderful stories that go with them. Customers come for the ambient shopping experience, because it truly *is* an experience. Boomerang for Modern is a fantastic destination for anyone seeking to step back in time and reemerge with a piece of history they can treasure for years to come. (760-880-1963; boomerangformodern.com)

Design Happy.



All the ways to make

your house your home

Working from home never looked so good! Explore our trending, high-quality products to give your home an extra bit of magic. #WFH

Visit teamson.com/atomic-ranch to unlock an exclusive offer and follow [@teamson](https://twitter.com/teamson) to explore all the different ways to [#designhappy](https://twitter.com/designhappy).

teamson[®]



retro roadtrip



MARTIN CREATED A REEL FILLED WITH BUILDINGS FROM ALL OVER PALM SPRINGS DESIGNED BY THE LIKES OF DONALD WEXLER (ABOVE LEFT) AND HUGH KAPTUR (ABOVE RIGHT).

A VISION

By Jackie Torres

Photography by Martin Knowles

in the Desert

A newly updated retro toy can take you on a journey to some of Palm Springs' most iconic locales—all from the comfort of your own home.



Canadian photographer Martin Knowles is no stranger to Palms Springs. He often makes the trek down south for the annual Modernism Week events.

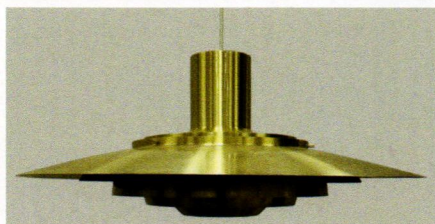
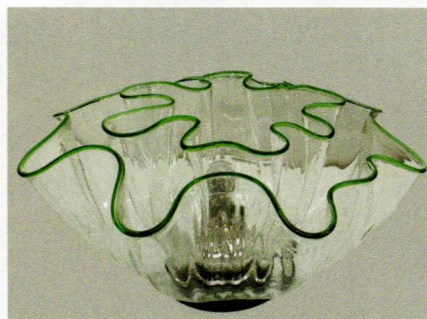
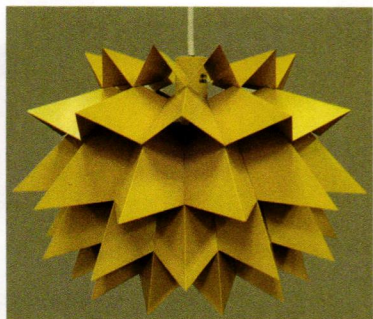
However, his latest project brings the desert to anyone who's willing to get back in touch with their youth and buy one of his classic View Master sets. These sets offer a series of reels, each featuring his photography of such legendary Palm Springs masters as Hugh Kaptur, William Krisel and Donald Wexler.

View Master sets are available at Destination PSP, (760) 354-9154 or destinationpsp.com.



Modular International Inc.
innovative lighting

Large limited inventory of original 1960s-1970s Nordisk Solar and Vistosi Italian Murano Glass lighting fixtures for sale. Limited quantities of signed fixtures available! Nordisk Solar still in original packaging!



Scan the QR Code below to access full available inventory.

For inquiries, please contact us at:

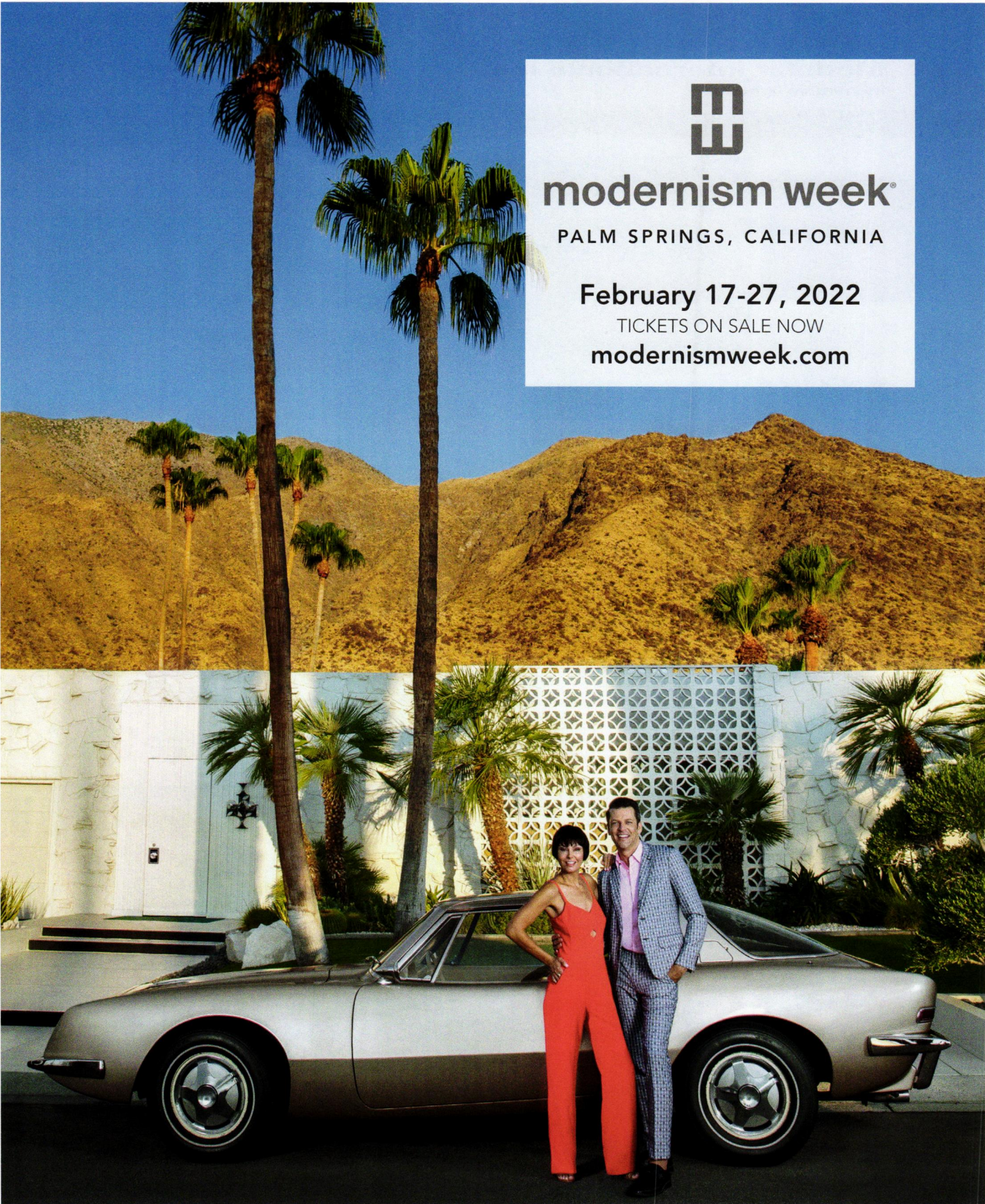
customerservice@modularinternational.com or call us: **412.734.9000**



Quality products for Home & Garden. Made in the USA.



modern. elegant. fun. **tedstuff.net**




modernism week[®]
 PALM SPRINGS, CALIFORNIA

February 17-27, 2022
 TICKETS ON SALE NOW
modernismweek.com

2022 Sponsors as of December 1, 2021. Photo by Monica Orozco.

Major



Grand

Civic Presenting



Premier

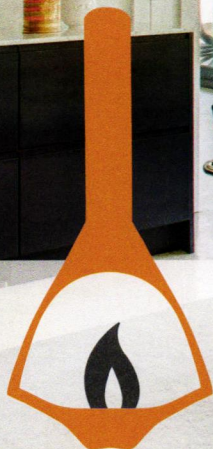
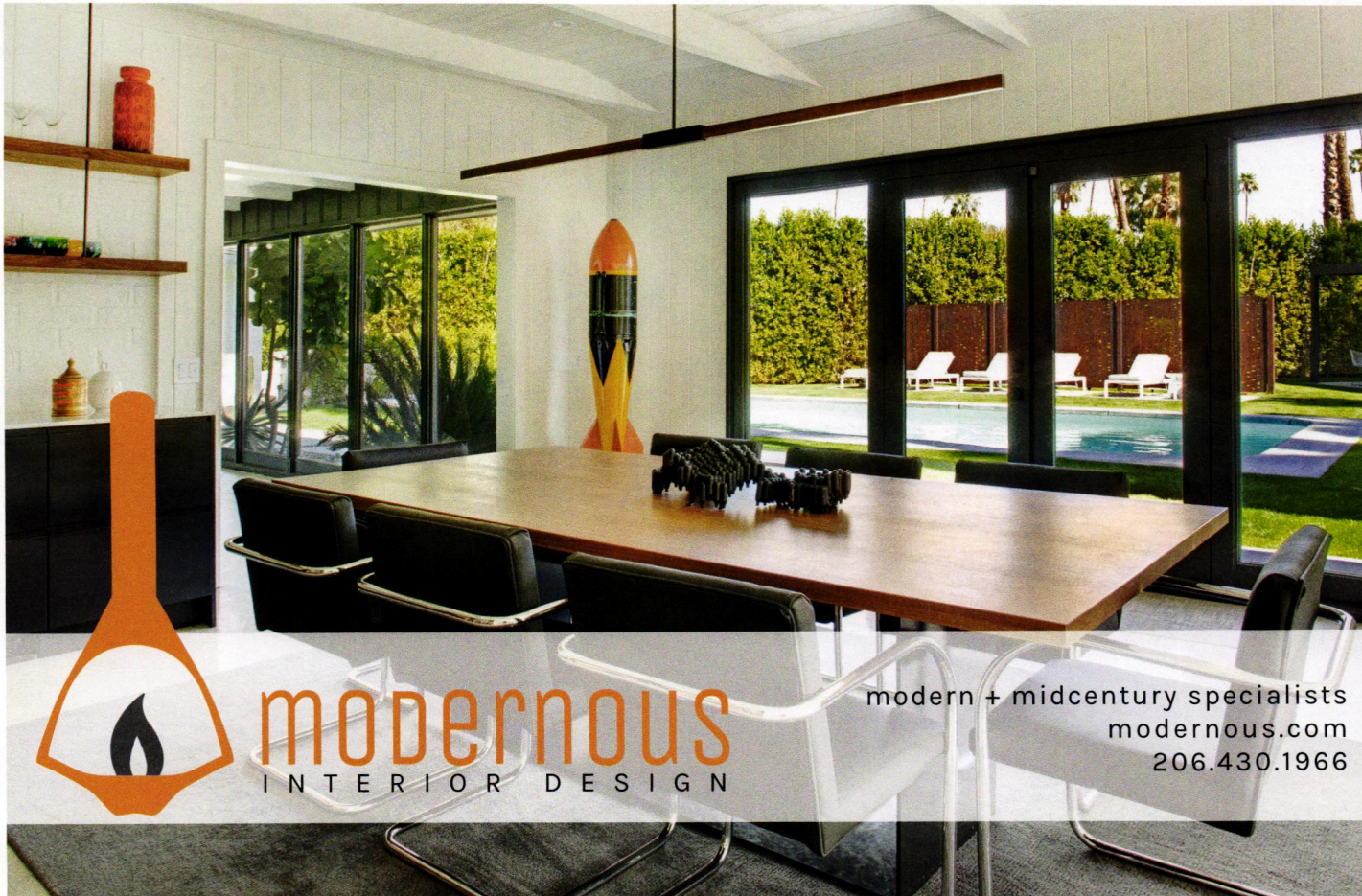


Platinum



Media





modernous
INTERIOR DESIGN

modern + midcentury specialists
modernous.com
206.430.1966

It's never too early to talk.

Thinking of buying or
selling in Albuquerque?

Call me.

505.263.7892

Talia Freedman and Co. Real Estate.
4116 Lomas Blvd NE, Albuquerque, NM 87110
www.ABQ-Realty.com



The Perfect Palette

The new owners of this 1957 home kept many of the existing features, enhancing them with vibrant prints and colors, as well as personal touches, in every space.

By Lindsay Jarvis | Photography by Dave Folks | Styling by Lindsay Jarvis





THE FRONT DOOR AND VINTAGE BREEZEBLOCKS WERE PAINTED IN DUNN EDWARDS "FAIRYTALE DREAM," A SOPHISTICATED HUE OF PINK (WHICH IS A FAVORITE COLOR OF THE NEW HOMEOWNERS). FOLIAGE IN THE FRONT YARD WAS THINNED OUT BY ABOUT 50 PERCENT, CREATING A CLEAN LOOK THAT COMPLEMENTS THE HOME'S MID CENTURY MODERN ARCHITECTURE.

During a Modernism Week 2020 tour just before the pandemic, a "for sale by owner" sign placed in front of this 1957 Twin Palms, California, home caught the attention of its future owner and his fiancée. It was love at first sight for the couple, and they contacted their realtor and then quickly made a deal.

While the house was in relatively good shape, it was in need of a refresh and colorful makeover. The only problem? The new homeowner, a film and television producer living in Canada, was suddenly unable to travel to his newly acquired house.

The homeowners had partnered with Kevin Kemper and Howard Hawkes of H3K Design for a previous renovation on a 1960s home in Maui, Hawaii, and reached out to work with them again on this new project.

"We designed this virtually. We worked with H3K, who are local [to Palm Springs]. They are top-notch, and they would send us photos every week, as well as a video if we needed it," says the homeowner.

The couple also utilized a 3D tour of the home to help make design choices without being present.

STARTING WITH THE BASICS

The previous owner had purchased the home in 2013 after a significant and tasteful renovation had taken place. Because the house was in relatively good condition, the team set about refreshing the space for better functionality and to suit the tastes of the new homeowners.

"We had some basic stuff to do, such as refurbish the roof, along with some electrical and plumbing," the home owner explains. "Just to make everything work better, because it had been seven years since [anything had been done to the home]."



After tackling the basics, the team replaced a wall-mounted AC unit in the main bedroom with an independent system that encompasses the primary bedroom, bathroom, desk area and laundry.

"The best part about a split system is that it gives you a lot more flexibility, and you can actually have a lot more control," Kevin Kemper of H3K Design points out. "And the fact that you can actually do multiple rooms off one system is great."

They also created a barbeque/bar area in the backyard, as well as circular concrete pads that form a walkway through the grass. Existing carpet in the bedrooms was replaced by a similar poured terrazzo-type tile that was already in the main areas of the home, thus creating a seamless look via floors that are easy to clean.

ABOVE: THE SAME ROCKS USED IN THE PLANT BED BY THE WALL WERE PUT INTO THE EXISTING FIREPIT AND SURROUNDING THE OLIVE TREE. "MY FIANCÉ AND I REALLY LIKE THE DESERT FEEL, SO IT JUST MADE MORE SENSE WITH THE CACTI TO HAVE THE ROCKS," SAYS THE HOMEOWNER. ANOTHER SET OF CIRCULAR CONCRETE PAVERS MIMICS THOSE BY THE BARBEQUE AREA.

OPPOSITE, TOP: TWO APEROL "SPRITZ" POSTERS INSPIRED THE COLOR PALETTE FOR THIS OUTDOOR SEATING AREA, AS WELL AS FOR THE ENTIRE BACKYARD. TO CREATE AN OPEN SPACE, THE TEAM REMOVED A POST THAT WAS PREVIOUSLY LOCATED TO THE RIGHT SIDE AND THEN REPLACED THE BEAM THAT GOES ACROSS. "AND WE ADDED THE LIGHTS AND THE FAN SO PEOPLE COULD HAVE AN AREA THAT'S AWAY FROM THE SUN," THE HOMEOWNER EXPLAINS.

OPPOSITE, BOTTOM: AN ABUNDANCE OF GREENERY WAS GROWING AGAINST THE BRICK PART OF THE WALL TO THE LEFT. THE NEW HOMEOWNERS WANTED A CLEAN LOOK, SO THEY REMOVED THE PLANTS THAT WERE THERE AND PUT IN DESERT-FRIENDLY CACTI, AS WELL AS ROCKS IN THE PLANT BED. THE POOL WAS IN GREAT CONDITION AND NEEDED NO REAL UPDATES.





ADDING PERSONAL STYLE

Inspired by the existing pegboard in the kitchen sliding cabinets and the guest bedroom closets, the new homeowner carried the look into other parts of the house. The primary bedroom (which was previously some kind of living room but had been converted to a bedroom during an earlier renovation) had an open closet.

"I had H3K and the construction [team] make pegboard doors to match so that all the closets are the same," the homeowner says. The team also created a custom TV stand with the pegboard material for further continuity.

A PERSONAL PALETTE

Knowing where to start is often a challenge when choosing a color palette. This couple utilized inspiration from artwork for several spaces in their home.

Vintage Aperol "Spritz" posters in an outdoor seating area inspired a blue-and-yellow color scheme for the entire backyard. The homeowners are also tennis fans and designed one of the guest bedrooms and bathrooms around a vintage Wimbledon poster. In the main bedroom, Shag's "The Imposters" was the springboard for the design, while his "The Party" sparked ideas for the front guest room.



LEFT: TO THE RIGHT, A CUSTOM TV STAND WAS CREATED WITH PEGBOARD SLIDERS TO MIRROR THE EXISTING PEGBOARD FEATURES THROUGHOUT THE HOME. THE PLACEMENT OF THE TV WAS ALSO IMPORTANT TO THE HOMEOWNER: "I WANTED THE TV TO BASICALLY BE THE SAME HEIGHT AS THE FIREPLACE," HE SAYS.

BELOW: THE FLORS RUG AND BLUE JOYBIRD COUCH WERE INSPIRED BY A PREVIOUS ARTICLE IN ATOMIC RANCH MAGAZINE! "WE DIDN'T WANT A BIG, BRIGHT RUG; WE WANTED SOMETHING THAT HAS SOME COLOR THAT CONNECTED THINGS TOGETHER," SAYS THE HOMEOWNER.



RIGHT: THE HOMEOWNERS WANTED WALLPAPER IN THIS GUEST BEDROOM BUT THOUGHT IT WOULD BE TOO MUCH AGAINST THE SHAG PRINT ON THE OPPOSITE WALL. THANKS TO THE HOME'S 3D VIRTUAL TOUR, THEY REALIZED THAT THE WALL CONNECTING TO THE LIVING ROOM WOULD BE THE PERFECT SPOT FOR A POP OF COLOR AND PATTERN THAT WOULD CONNECT THE ENTIRE SPACE. "IT'S LIKE A SURPRISE WHEN YOU COME INTO THE ROOM," SAYS THE HOMEOWNER.





"The free-flowing floor plan provides enough space for an entire group to spread out and relax."

"H3K WENT THROUGH AND MADE SURE EVERYTHING WAS WORKING PROPERLY, SLIDING PROPERLY AND [WAS ABLE TO BE] OPENED. [THE TEAM] ALSO ADJUSTED DRAWERS," SAYS THE HOMEOWNER. THE EXISTING PEGBOARD WAS UPDATED FROM A BLUE HUE TO WHITE.



EXISTING CABINETRY AND LIGHTING WERE KEPT IN THE KITCHEN AND DINING AREA, WHILE A TILE BACKSPLASH WITH POPS OF PINK WAS ADDED TO ECHO THE FRONT EXTERIOR BREEZEBLOCK. "WE LOVE THE WALNUT. WE LIKE THAT, AS WELL AS THAT IT'S CARRIED THROUGH IN THE BATHROOMS," SAYS THE HOMEOWNER ABOUT THE CABINETRY.



The recent refresh added pops of vibrant color, pattern and increased overall efficiency, and the homeowner plans to utilize the space as a vacation rental when he's not staying there.

Looking toward the future, he notes that the couple might further refurbish the bathrooms to keep up with the demands on a rental home. But, for now, the homeowner is looking forward to enjoying the space, describing it as "designer chic" while "still [honoring] the home's classic mid-century architecture." 🌸

SEE SOURCES, PAGE 86



A SLIDING BARN DOOR THAT MIMICS THE BREEZEBLOCK PATTERN WAS INSTALLED DURING A PREVIOUS RENOVATION. THE COLOR PALETTE IN THIS GUEST BEDROOM IS INSPIRED BY SHAG'S "THE PARTY" PRINT THAT HANGS ABOVE THE BED. TO THE RIGHT OF THE BARN DOOR IS A VINTAGE PINK TELEPHONE THAT'S HOOKED UP AND WORKING.



ABOVE: THE PINK FOUND ON THE FRONT EXTERIOR AND KITCHEN ACCENT TILES IS ECHOED IN THIS GUEST BEDROOM. "WE FOUND THE WALLPAPER AND THEN FOUND THIS GREAT RUG THAT TOTALLY MATCHED," THE HOMEOWNER EXPLAINS. "WE ORDERED THE PINK BED FROM JOYBIRD AND THEN BUILT AROUND THAT."

BELOW, LEFT: IN THE PRIMARY BATHROOM, THE SHOWER AREA ONLY NEEDED A REFRESH. A NEW TRIM, SPOUTS, TOWEL RACKS AND HANGERS WERE

ADDED, AS WELL AS WALLPAPER ON THE ACCENT WALL. THE BATHROOM AREA WAS JUST SEPARATED BY A PIECE OF GLASS, SO THE TEAM ENCLOSED IT BY CREATING A WALL AND POCKET DOOR TO CREATE MORE PRIVACY.

BELOW, RIGHT: THIS GUEST BATHROOM WAS REFRESHED WITH BLINDS, NEW HANDLES, A MIRROR WITH TOUCH SIDE-LIGHTING AND VIBRANT, GREEN WALLPAPER. THE GREEN THEME CARRIES OVER INTO THE ADJOINING BEDROOM.



It's *Hip* to Be Square

An A. Quincy Jones condo renovation plays up all its best angles.

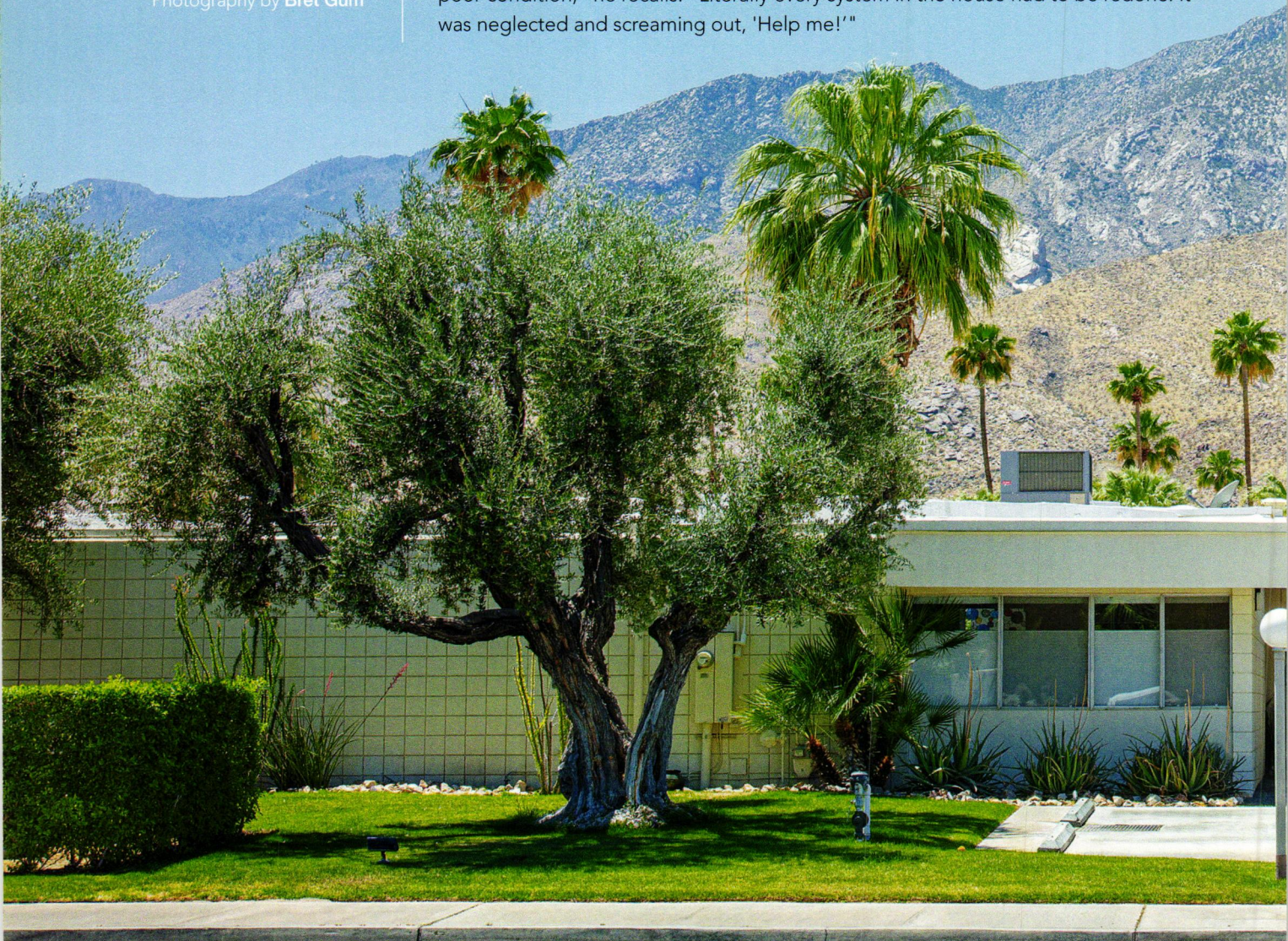
By Erin Lawrence
Photography by Bret Gum

Not everyone has the stomach to buy a home that's in foreclosure. After all, the process can be lengthy and complicated; and while you might be getting a bargain, there's likely some serious work that needs to be done.

However, if that home was designed by storied architect A. Quincy Jones and sits in one of the most sought-after neighborhoods in Palm Springs, a buyer can be forgiven for throwing caution to the wind.

Realtor Frank Bruno took the plunge in 2015, purchasing a home in Palm Springs' Indian Canyons neighborhood in a development known as Country Club Estates.

"It had the ideal west-facing views I had been searching for, but it was in extremely poor condition," he recalls. "Literally every system in the house had to be redone. It was neglected and screaming out, 'Help me!'"



Located on a triangular wedge of land, the homes here have shared walls and line a common pool area. Designed by A. Quincy Jones in the mid-1960s, it's the only residential property Jones handled in Palm Springs ... aside from the famed Annenberg estate at Sunnylands.

Frank began a two-year renovation and restoration and elected to take on much of the project management and design work himself, even overseeing the construction.

A COMMUNITY VISION

As his own home began to come together, he realized the collection of condos in his complex needed more than a coat of paint: They needed a vision for the next century. Consequently, Frank ran for, and won, a seat on the condominium's board—with an eye toward guiding its future from drab to dramatic.





The first and largest tasks in Frank's renovation were upgrades to the plumbing, electrical, heating and cooling systems. At the same time, and with the interior stripped nearly bare, Frank started to envision how the home would finally come together.

"One of the design features I knew I wanted out of the gate was for each room to have its own identity. In real estate, I see home after home that use the same tile and countertops in the kitchen and each of the bathrooms." Frank shares. "To me, that's boring and uninspiring. It's more of a design challenge to be able to utilize different materials and aesthetics while, at the same time, cohesively bringing all of it together in a complementary manner."

A NATURAL DESIGN FOCUS

Frank's house forms a large U-shape anchored by a small central courtyard. Floor-to-ceiling windows span each side and inundate the home with light. Cinderblock walls form the outdoor atrium structure and extend into the house on two sides—into the bedroom and the living room, where it also forms a chunky fireplace, an element Frank fell in love with.

"The whole design came together around the cinderblock. I love it so much. I've never been able to hang any art over the fireplace, because I feel the cinderblock is, itself, a work of art."



ABOVE, LEFT: FRANK OPENED UP THE KITCHEN TO THE MAIN LIVING AREA, REMOVING TWO WALLS AND PULLING OUT A LOW-HUNG CEILING AND AGING DUCTWORK. EVEN SO, HE KEPT AN EXISTING SKYLIGHT THAT WAS PART OF A. QUINCY JONES'S ORIGINAL DESIGN.



WINDOWS—KEY MCM FEATURES

Windows in mid-century-era homes are often a challenge for renovators. Older aluminum and single-paned glass in floor-to-ceiling windows can be inefficient. Nevertheless, their minimalist look and feel provide a certain authenticity that's extremely difficult to replicate.

All the windows in Frank's home are original, and he went to great lengths to restore and repair them to get them back in working order, because they're essential to the look, character and feel of his house.

"What many people don't realize is that newer, double-paned windows have a greenish tint and have highly reflective properties. When you have a home with a center atrium, and one of the main features is to be able to view other rooms through multiple sets of windows or see mountain views, I didn't want to mess with anything that could interfere with the dynamics of that original feature."



The cinderblocks also gave Frank his cues for other design elements in the home: The floors are 24x24-inch porcelain tiles, and cubist elements pop up all over the house.

A stunning, floating wood-faced dresser that anchors one side of the principal bedroom is actually a double-sinked vanity, which architect Jones set outside the bathroom and open to the bedroom.

"I saw something in that; that it could really be a beautiful design element, and I wanted the sink cabinet to feel like furniture—as if it were part of the bedroom," Frank recalls.

A center door inside the cabinet pulls out and hides a towel rack, and sleek waterfall taps keep the look streamlined and clutter free.

Frank asked a carpenter to create what he calls a "brutalist" design (a style in art and especially architecture that uses exaggeration and distortion to create its effect) for the door fronts, so that its multitude of squares once again give a nod to the cinderblock.

Color is also at play everywhere in the home.

"By using white and gray as the base, I knew I could use color as an accent and change that down the road, therefore changing the look of the space. So, between the color and the wood accents, I feel that was the best way to bring warmth to the space and make sure it doesn't come across as sterile."

SENSITIVE UPDATES

When it came to the kitchen, Frank knew he might need to diverge from A. Quincy Jones's original plans to open the area up and make the house more livable for himself and his mini husky, Kaya.

The **cinderblocks** also gave **Frank his cues** for other design elements in the home: The floors are 24x24-inch porcelain tiles, and cubist elements pop up all over the house.



FOR MORE ON
ARCHITECT A.
QUINCY JONES, VISIT
ATOMIC-RANCH.COM.

ABOVE: THE KITCHEN IS WHERE FRANK MADE THE BIGGEST CHANGES. HOWEVER, HE LET OTHER A. QUINCY JONES DESIGNS GUIDE HIS UPDATES AS HE REMOVED WALLS AND OPENED UP THE SPACE. "A. QUINCY JONES HAD THAT OPEN-CONCEPT IDEA FOR THE BATHROOM SINKS. TODAY, HE PROBABLY WOULD HAVE OPENED UP THE KITCHEN TO ACCOMMODATE OUR MODERN LIVING," FRANK SAYS.

BELOW: FRANK CHOSE A HEXAGONAL TILE FOR THE KITCHEN BACKSPLASH AND LEFT INSTRUCTIONS FOR IT TO BE CUT IN HALF AT THE BOTTOM WHERE IT MET THE COUNTERTOP, CREATING A CLEAN LINE. WHEN THOSE INSTRUCTIONS WEREN'T FOLLOWED AND A RIPPLED BOTTOM EDGE WAS LEFT INSTEAD, HE GOT CREATIVE, TRIMMING THE EDGE WITH A 1-INCH STRIP OF METAL. "IT'S NOW ONE OF MY FAVORITE FEATURES."





ABOVE, LEFT: CIRCULAR ELEMENTS CREATE A DIFFERENT LOOK FOR THE SECOND BATHROOM. ROUND PENNY TILE SETS OFF GLOBE PENDANT LIGHTS THAT SPARKLE "LIKE STARLIGHT," ACCORDING TO FRANK. THE DECORATIVE METAL ELEMENT ON THE CABINETS COMPRISES SLICES OF METAL TUBING GLUED INTO GROOVES CREATED USING A HOLE SAW.



ABOVE, RIGHT: IN A NOD TO MID-CENTURY "RUMPUS ROOMS," AND TO CREATE A CONNECTION TO THE GEOMETRIC WOOD VANITY THAT'S PLACED OUTSIDE THE BATHROOM, FRANK CHOSE PORCELAIN TILE IN A WOOD PRINT. THE RIVER STONES USED IN THE BASE OF THE SHOWER ARE "LIKE A FOOT MASSAGE EVERY MORNING," HE SAYS.





Frank's design goal was to find a common thread between the **mid-century** and **modern** eras and **meld** them together.

OPPOSITE, BOTTOM: IN THE PRINCIPAL BEDROOM, FRANK DELIBERATELY KEPT THE DESIGN SIMPLE, ALLOWING HIS BELOVED CINDERBLOCKS TO AGAIN TAKE CENTER STAGE.

"It was completely closed off, and there was a soffit that came down and housed all the ductwork. It's the only structural change I made to the house, but I felt that because A. Quincy Jones had that open-concept idea for the bathroom sinks, today, he probably would have opened up the kitchen to accommodate our modern living."


THE SOFTER SIDE

Despite all the corners in the home, Frank has also found ways to soften the hard edges in the space.

Circular elements abound; they can be seen in the decorative metal decoration on the guest bathroom cabinets and as a bubbly art element at the entry—a feature that Frank designed.

"It's kind of my take on a wall divider that you'd see in mid-century construction. It's constructed of circular metal pieces and colored glass. At night, there's light behind it. It just projects these colored circles on the wall, and it becomes a different kind of art."

Frank hopes Country Club Estates is also coming full circle. Following the renovation, his home was featured during Palm Springs' Modernism Week 2018 (and will be again in 2022), and the complex is now one of the most sought-after areas in south Palm Springs.

"I think A. Quincy Jones would be proud." 

SEE SOURCES, PAGE 86

FRANK LIVED IN THE HOME FOR A WHILE BEFORE
DECIDING WHAT TO DO IN THE COURTYARD.
CREATING WHAT HE CALLS A "MODERN ZEN
GARDEN," HE SAYS, "IT'S DESIGNED TO BE A
VISUAL SPACE, NOT A USABLE SPACE."

"I feel like a steward
of this property and **that**
I need to do it justice."



THE HOME IS DRENCHED IN NATURAL LIGHT DURING THE DAY, BUT FRANK WANTED TO ENSURE THE AESTHETIC WAS EQUALLY PLEASING AT NIGHT. HE USED PHILIPS HUE SMART-COLORED LIGHTING—BOTH INDOORS AND OUTSIDE THE HOUSE—THAT CAN BE ADJUSTED TO ENHANCE GREENERY, CAST A COLORFUL GLOW ONTO WALLS OR ECHO A FIRESIDE GLOW. PAINTING ALL THE WALLS IN DUNN EDWARDS' "COOL DECEMBER" GAVE THE LIGHT A NEUTRAL CANVAS TO PLAY ON.

Atomic Orange

Written by **Laura Shimko**
Photography by **Greyslock Photography**
Styled by **Jickie Torres**

Vibrant colors, retro furnishings, fresh artwork and modern updates give this 1959 Krisel home in Palm Springs new life while preserving and honoring the beauty of its original architecture.



359

When Los Angeles designer Danielle (“Dani”) Nagel took a trip to Palm Springs’ Modernism Week nearly four years ago, little did she know that not only would she discover a newfound love of Mid Century Modern design, she would also purchase her very own MCM marvel—a cute, 984-square-foot Krisel.

“I’m a fashion and interior designer and was invited to attend as a guest in the ‘Mod Squad,’” Dani says. “We did a bunch of tours, attended talks and were simply fascinated with the rich history behind MCM design.”

After getting her start in the fashion world, Dani decided to break out and start her own brand—Dazey LA (@dazey_la).

“My design aesthetic across all mediums ties in a ton of color and vintage design,” she says. With an eye for bold and exciting hues, patterns and art, Dani gave the Krisel home a much-needed refresh that balances past and present and highlights the best of mid-mod style.



THE EXTERIOR OF THE HOME IS WHAT FIRST CAUGHT DANI'S EYE AND MADE HER "FALL IN LOVE" WITH THE HOUSE. BECAUSE OF THIS, SHE DIDN'T ALTER THE LANDSCAPING OR EXTERIOR DESIGN. "IT CAME WITH SOME PRETTY AMAZING ANCIENT CACTI AND GORGEOUS LANDSCAPING ALREADY," SHE SAYS. THE ONLY MODIFICATION WAS TO THE SMALL ART INSTALLATION TO THE LEFT OF THE FRONT DOOR. THIS WAS DONE BY A LOCAL ARTIST AND PUT IN BY THE PREVIOUS OWNERS. SHE REPAINTED IT TO MATCH THE COLOR THEME OF THE HOME.

DESERT GEM

The house that would become "The Dazey Desert House" was love at first sight for Dani.

"Its charm and character made my heart jump when I saw the listing," she says.

The house hunt started in Los Angeles, where Dani and her fiancé, both entrepreneurs, reside. After many failed attempts to find a home, they checked Zillow while driving home from Palm Springs.

"When I saw this house on our way back from Modernism Week, I got the idea, *Hey, what if we buy our 'second home' first?*" Dani says.

The three-bedroom, one-bathroom home was in great condition. While she isn't aware of all of the changes made by previous owners, a contractor gave her an idea of the renovation work he'd done to bring the home back from a dilapidated state.

Designer's Tips: Get Colorful

Incorporating color into your mid-mod home can be a little tricky. However, achieving a fun, retro vibe without feeling too "over the top" isn't as difficult as you might imagine. Here, designer Danielle Nagel shares her tips about how to use color in your home for a vibrant take on Mid Century Modern style:

MAKE A STATEMENT. Create a focal point for your space by selecting an item or feature you want to highlight and let that inspire your décor and styling choices. "I usually pick one statement piece for each room. It can be a piece of art, furniture, wallpaper, etc. Then, I start to design the color scheme around that," she explains.

KEEP IT SIMPLE. "My palletes usually consist of two or three main colors and then some small accents that are different shades of the main ones," she says. She suggests taking a peek at photos of vintage mid-mod homes for some palette inspiration.

CREATE COHESION. Once you've selected your colors, incorporate them throughout your home. "Be sure to tie in the main colors as much as you can in a room to really build a cohesive look that makes sense," Dani says.

SPREAD IT OUT. Be creative when adding color to your design, and make sure it's evenly distributed. It doesn't have to be only large pieces; sometimes, the details really make a huge difference. "I spread the colors all around the room so it's not too concentrated in one area," Dani says. "Sometimes, you can even loop in a lesser-used color by simply adding pillows or a frame."

TELL A STORY. Have fun by adding an extra layer of meaning to your décor. Not only does this help you create better cohesion in your design, it also allows you freedom to play with different options to see what conveys your meaning best. As Dani points out, "It's all about telling a story with your colors and staying consistent."



ON THE OPPOSITE END OF THE LIVING ROOM, DANI CREATED AN ACCENT WALL TO DISPLAY HER GRANDMOTHER'S ORIGINAL ARTWORK. "I FOUND ALL THIS ARTWORK IN HER HOME AFTER SHE PASSED AND DECIDED TO DEDICATE A SPECIAL WALL TO IT," SHE SAYS. "SHE WAS ALWAYS A HUGE ARTISTIC INSPIRATION TO ME, SO I'M HAPPY TO HONOR HER IN THIS WAY." TO GIVE THE LIVING ROOM A RETRO VIBE, DANI MIXED OLD AND NEW FURNISHINGS. "I LOVE COMBINING VINTAGE PIECES WITH NEW ONES, BECAUSE IT REALLY COMES OFF AS MORE AUTHENTIC," SHE POINTS OUT.



LARGE WINDOWS THAT ARE ORIGINAL TO THE SPACE BRING IN LOTS OF NATURAL LIGHT TO BRIGHTEN THE DINING AREA. DANI'S DESIGN CHOICES CAPITALIZE ON AND HIGHLIGHT THE FEATURES ALREADY PRESENT. "I REALLY WANTED YOUR EYES TO BE DRAWN UPWARD VIA THE TALL CEILINGS, GORGEOUS WINDOWS AND GARDEN VIEWS," SHE SAYS. "THE STATEMENT LAMP AND LARGE ORANGE WALL BRING YOUR EYES UP AND ALLOW YOU TO TAKE IT ALL IN."



ABOVE: DANI DIDN'T ALTER THE OPEN LAYOUT OF THE DINING, KITCHEN, LIVING SPACE OR THE FOYER. "I LOVE THE ANGLES, THE TALL, WOOD CEILINGS AND WINDOWS EVERYWHERE. LIGHT JUST POURS IN, AND WHEN YOU LOOK OUTSIDE, THERE ARE MATURE CACTI AND MOUNTAIN RANGES AS FAR AS THE EYE CAN SEE," SHE SAYS. "IT REALLY CAPTURES THAT CALIFORNIA INDOOR-OUTDOOR LIFESTYLE."

Thankfully, the home still retains many original features. The exterior, bathroom and kitchen, as well as the overall architecture, are original, especially the kitchen, which is a blast from the past. The appliances, tile countertops and pegboard cabinetry are all original—complete with hairpin legs.

Throughout the home, the windows are unaltered and let in ample desert sunlight to brighten the interior naturally. From the front of the home, you can see the windows taper off into the roofline, which gives the home a sleek and dynamic curb appeal.

"I am drawn to the unexpected, and this home is just that," Dani explains.

RETRO REFRESH

Because the home was practically turnkey when Dani came across it, she and her fiancé started using it as an Airbnb rental shortly after purchase. As a result, Dani has continued to change and add to the interior design of the home over a period of three and a half years. And, in addition to furnishings and finishes, Dani has had to contend with plumbing and electrical challenges.



THE KITCHEN IS NEARLY ALL ORIGINAL, WITH CHANGES THAT INCLUDE THE COLOR SCHEME AND FLOORING.

"MY FAVORITE PART IS THE CUSTOM CABINETRY. IT'S JUST SO CHIC AND STYLISH. FROM THE HAIRPIN LEGS TO THE UNIQUE SHAPE, IT'S DEFINITELY A SPECIAL PIECE," DANI SAYS. "BY PAINTING THE CABINETS, REDOING THE FLOORS AND REPLACING THE KNOBS AND FAUCET, I THINK WE REALLY GAVE IT A FRESH, UPDATED LOOK WHILE HONORING THE INTEGRITY OF THE DESIGN."





ABOVE, RIGHT: IN THE LIVING ROOM, DANI PLAYS WITH DIFFERENT SHADES OF ORANGE TO GIVE HER DESIGN A COHESIVE LOOK. BECAUSE SHE AND HER FIANCÉ USE THE HOME PRIMARILY FOR AIRBNB RENTALS, SHE MADE SURE TO KEEP AN EYE ON FUNCTIONALITY IN HER STYLE CHOICES. "WE HAD TO CHOOSE FURNITURE AND DESIGN ELEMENTS CAREFULLY, KNOWING IT WILL GET A TON OF WEAR AND TEAR FROM AIRBNB GUESTS, AS WELL AS THE HARD DESERT SUN AND WIND," SHE SAYS. THE FLOORING IS A PRIME EXAMPLE OF THIS. "AS A TEXTILE AND FASHION DESIGNER, I LOVE PATTERN AND WANTED A STATEMENT TILE FLOOR; BUT I ALSO KNEW IT COULD STAND UP TO LOTS OF GUESTS," SHE SAYS.



BELOW: THE ONLY BATHROOM IN THE HOME SITS JUST OFF THE FOYER, WHERE ALL THE BEDROOMS MEET. "THE BATHROOM WAS PLAIN WHITE AND GRAY, AND WE MADE IT SO MUCH HAPPIER WITH AN ORANGE-TILED FLOOR AND BRIGHT-YELLOW PAINT," SHE EXPLAINS. SHE ALSO UPDATED THE FAUCET AND LIGHTING FOR A MORE MODERN FEEL.

"We have been, and are still, fixing up certain things as we go," she points out.

While the changes might be gradual, Dani's guiding goal stays constant: Create a home that stands out.

"Palm Springs is filled with beautiful, extravagant homes, but many of them tend to feel sterile when it comes to the design," she says. "I wanted a lively, dynamic design that will transport anyone who enters into a different world."

Her background in fashion and graphic design fuels her desire for creating unique spaces. In fact, some of her own artwork is featured in the home, such as the mural in the office room.

BRING IN THE COLOR

Sleek lines, original features and eye-catching art aren't the only elements of the design that make this home special. Color plays a big role in making this small home feel larger than life.





ABOVE, LEFT: THIS BLUE SITTING ROOM IS LOCATED RIGHT NEXT TO THE BLUE BEDROOM AND IS ONE OF THE MORE SIGNIFICANT STRUCTURAL CHANGES MADE FROM THE ORIGINAL LAYOUT. "THE WALL BETWEEN TWO OF THE BEDROOMS WAS OPENED UP BY THE PREVIOUS OWNERS," DANI SAYS. "WE INITIALLY WANTED TO CLOSE IT BACK UP, BUT WE REALIZED



THAT IT'S NICE TO HAVE ONE MUCH LARGER ROOM WHEN IT'S JUST MY FIANCÉ AND ME THERE OR WHEN WE HAVE SMALLER GROUPS STAYING AT THE HOUSE." SHE STYLED THIS ROOM AS AN OFFICE WITH A PULLOUT COUCH AND INSTALLED A CURTAIN THAT CAN GO BETWEEN THE TWO ROOMS FOR ADDED PRIVACY IF NEEDED.



ABOVE, RIGHT: IN CONTRAST TO THE BLUE-THEMED BEDROOMS, THIS YELLOW BEDROOM TAKES ON A MORE SUBTLE LOOK IN ITS DESIGN. "IT'S A SOFTER, MORE BOHEMIAN FEEL THAT I FELT THE HOUSE COULD USE," DANI SAYS. "I DESIGNED THIS ROOM WHEN I WAS INCORPORATING MORE YELLOW INTO THE SPACE AND FOUND THIS WALLPAPER I LOVED. I DESIGNED THE ROOM AROUND THAT."

"It had an orange door that we decided to keep and design the whole house around because it made me so happy," Dani says. "Orange is such an underrated color!"

A major way Dani achieved her colorful design was by replacing the gray, painted flooring with tile throughout the main gathering areas of the home.

"One of our biggest investments and renovations was the floor: We retiled over half the house with gorgeous, orange-and-cream-checked handmade tiles by Fireclay tile," she says.

All in all, Dani's use of a bold palette, retro furnishings and fun artwork combine with classic mid-century architecture to make this Palm Springs Krisel build shine with a fresh, hip glow. 🌀

SEE SOURCES, PAGE 86

DANI CHANGED UP THE PALETTE IN THIS BEDROOM, ADDING IN LOTS OF BLUE. "I WANTED THIS ROOM TO BE RELAXING YET INTERESTING," SHE EXPLAINS. SHE CHOSE THE WALLPAPER AS THE INSPIRATION PIECE FOR THE SPACE. "I FEEL IT REALLY CAPTURED THE ESSENCE OF THE HOUSE—DESERT-THEMED, BUT WITH AN ARTSY AND ABSTRACT TAKE ON IT," SHE SAYS. IN ADDITION TO A PALETTE CHANGE, SHE ALSO INTRODUCED A SLIGHTLY DIFFERENT TAKE ON MCM STYLE. "I ADDED SOME MORE ART DECO PIECES, SUCH AS THE CHANNEL-TUFTED BED, AND THEN MORE-FUNKY PIECES, SUCH AS THE WALLPAPER AND RUG," SHE SAYS.



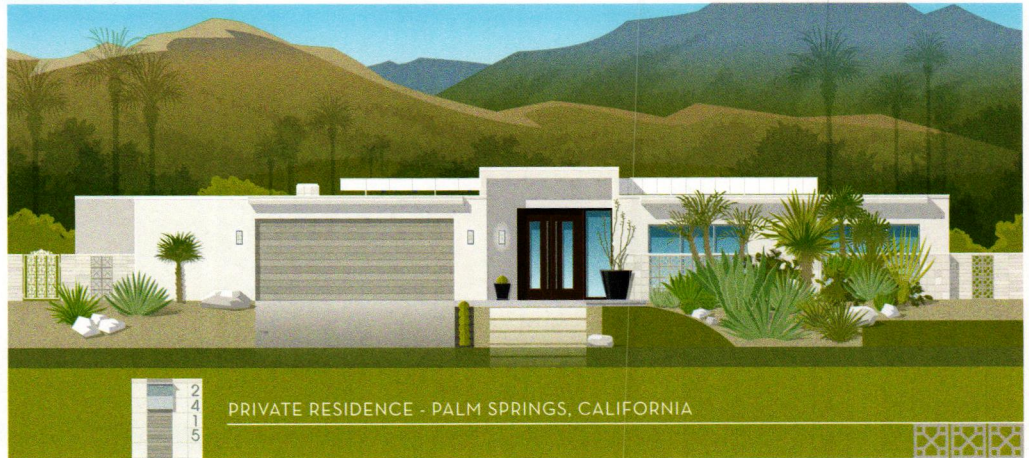
Custom HOME PORTRAITS



We all love the places we call home. We choose the colors, the furnishings, and the artwork that make our homes unique expressions of ourselves.

Let's work together to create a one-of-a-kind illustration highlighting what you love about your home!

*Get to know your home
in a whole new way*



PRIVATE RESIDENCE - PALM SPRINGS, CALIFORNIA

CHRISTIAN MUSSELMAN

Illustration

christianmusselman.com



Design by **AppoSITE Architecture**



HANDCRAFTED TILE MADE IN PORTLAND, OR
www.clayhaustile.com | order direct at 503.928.3076

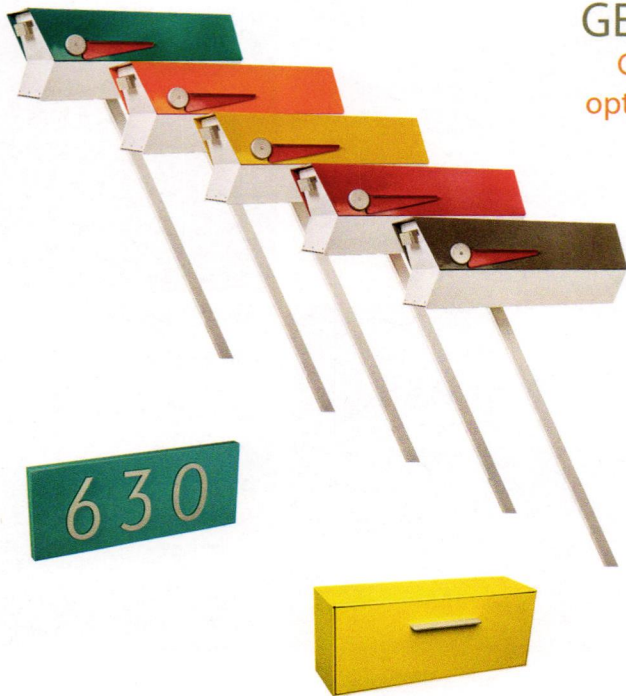
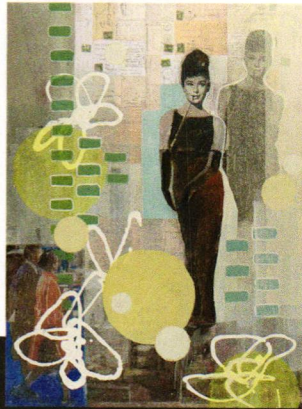
Memory Art Girl Originals and Prints

By Marjolyn van der Hart

About the Artist

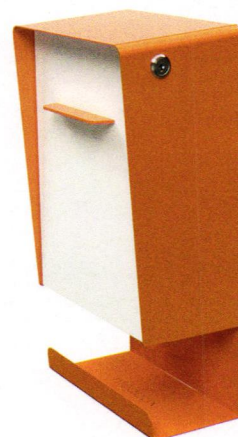
Marjolyn works from her studio in Toronto and has been represented by several galleries and exhibited at art fairs across North America. Through the use of collage and vintage references, her work brings references of memory into our contemporary vision.

memoryartgirl.com

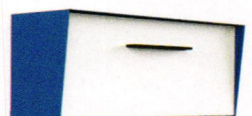
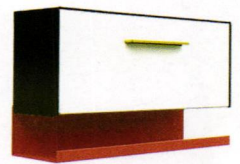


GET CREATIVE WITH COLOR & DESIGN!

Choose any color for the housing, door, handle, and optional letter tray, then select a vertical or angled front!



LOCKING!

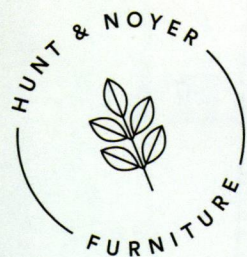


modboxUSA

www.modboxusa.com | 919.322.0894

Visualize your selection on our website!





**Thoughtfully Designed &
Built for Generations.**



Find the Solomon Console at www.huntandnoyer.com



**ANTHONY LAMORTE
FURNITURE**

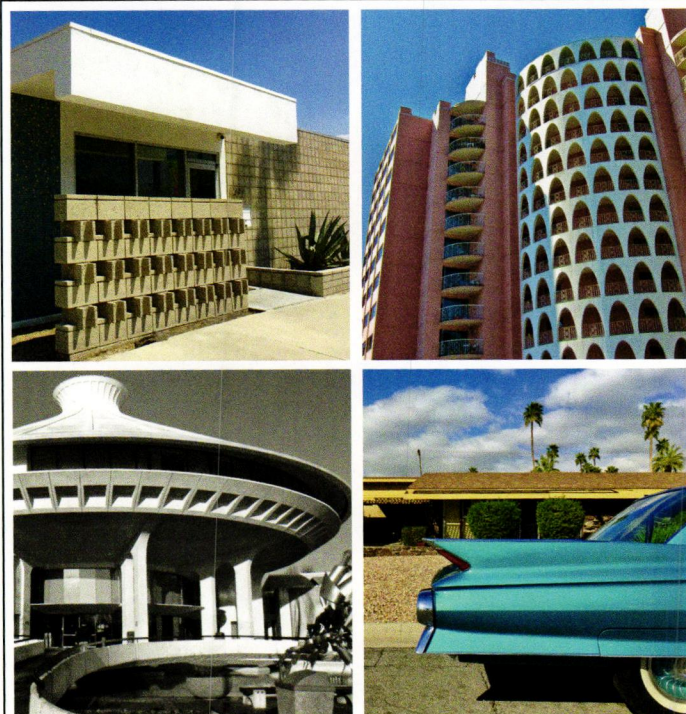
Thoughtful, creative design.

Creating custom furniture and artwork for over 50 years.



Julie chair... Designed by: Kim Franke and Tony Lamorte
Built by: Anthony Lamorte Furniture

Made in Reno, NV
Anthonylamorte.com
775-772-8622

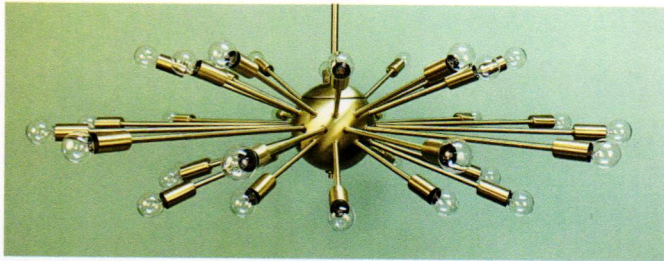


Modtraveler.net

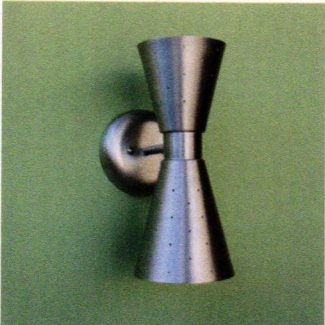
AN ENTHUSIAST'S GUIDE TO MODERNISM



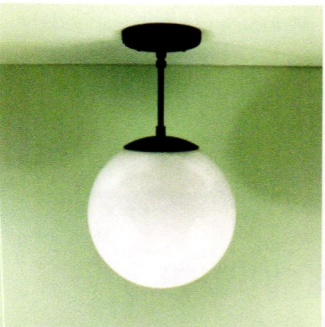
Practical P R O P S



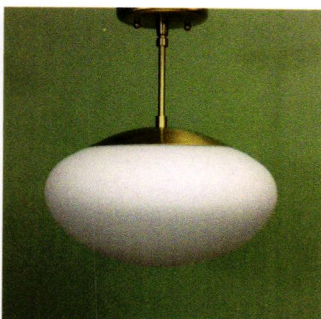
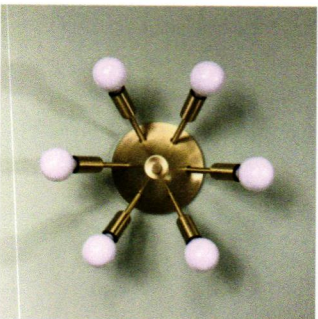
*Specializing in Authentic, Quality
Midcentury Reproduction Lighting*



*Pendants - Sputniks - Flush Mounts
Interior & Exterior Sconces
Bath Lighting - Floor & Arc Lamps
Desk, Table & Bedside Lamps
Restored Vintage Lighting*



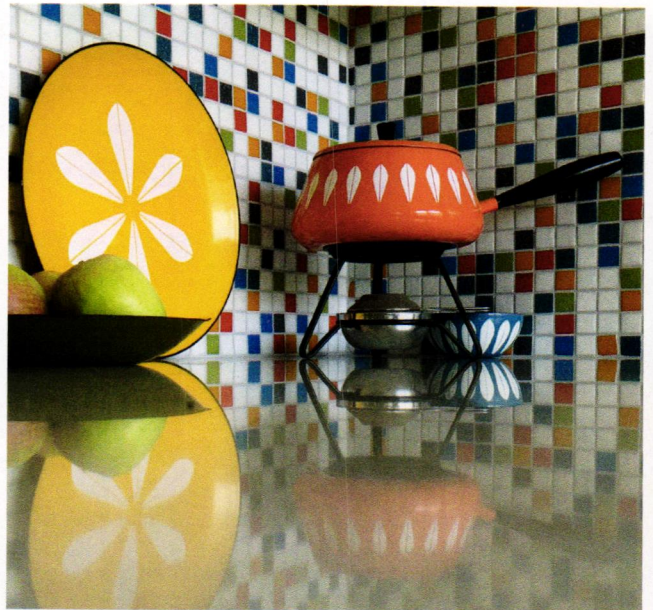
Family-Owned & Operated since 1991



shop.PracticalProps.com

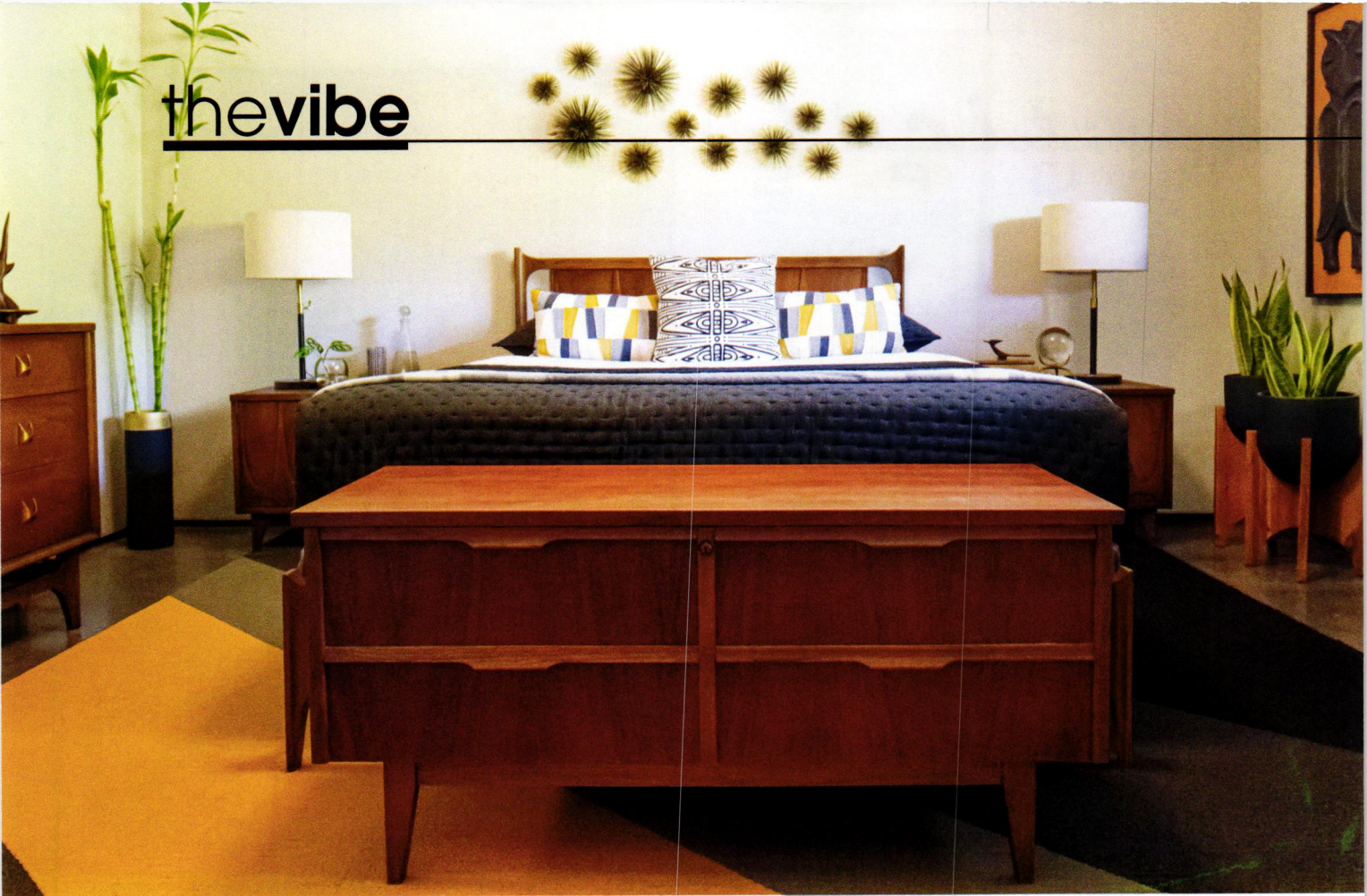
MODWALLS TILE

Take your design to the next level
with our unique midcentury tile!



 **modwalls®**

modwalls.com / 877 439 9734



TOP: THE USE OF CHEERFUL COLOR, GEOMETRIC SHAPES AND PLENTY OF LIVE PLANTS CREATES A FRESH AND INVITING RETREAT FOR SPRING.

Written and Photographed by
Robert Maurer

Mid-Mod Spring Cleaning

Making form meet function? Cutting the clutter? Yes, this annual tradition affects how your mid-century space looks and feels.

Spring is on the horizon, and it's the perfect time for some fresh perspective on our mid-century homes and the way we live in them.

I often use this time of year as a motivator to reevaluate how my home is working for me and what I can do to improve the areas I use most frequently.

A big part of this process focuses on cleaning and organization. Determining what can stay and what can be donated, sold or disposed of is not an easy task as collectors and curators of many vintage things.

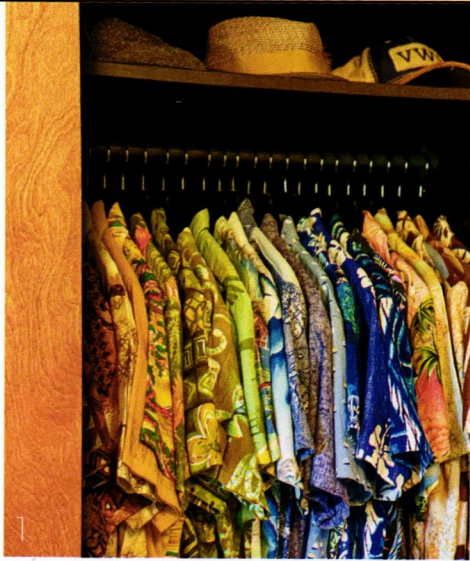
However, once you're in that "zone" of condensing and

organizing, I find the satisfaction from a spruce-up can often outweigh the tendency to accumulate.

With this theme of freshness on our minds, I've compiled a few of my favorite takes on home organization, cleaning, plant care and even a Palm Springs-inspired breakfast to get you started on the right foot.

BED AND BATH BASICS

Cleanliness and organization are essential to making a primary suite feel like a peaceful retreat ... and that doesn't stop at what's readily visible. Give your sleep sanctuary a



1. A SET OF DURABLE WOOD HANGERS CAN PROVIDE UNIFORMITY AND ELEGANCE TO YOUR SPRING WARDROBE.
2. VINTAGE BROYHILL FURNITURE IS GIVEN A LUXURIOUS UPGRADE WITH TACTILE FABRIC LINING EACH DRAWER.
3. THIS 1960S CEDAR CHEST BY LANE PROVIDES YEAR-ROUND PRACTICAL STORAGE AND PROTECTION FOR BULKY SWEATERS AND DELICATE TREASURES.
4. THE MONSTERA DELICIOSA IS A POPULAR PLANT WITH MID-CENTURY STYLE THAT'S FAIRLY RESISTANT TO COMMON PESTS.

refresh with these deep-cleaning details.

DRAWERS: Give your dresser drawers a finished look by lining them with cut fabric or quality gift wrap. A colorful pattern or texture can go a long way in making your daily routine feel more thoughtful and inspired.

MATTRESS: Remove all bedding and thoroughly vacuum both sides of the mattress. (And while you're at it, don't forget to vacuum under the bed.) Use a kitchen strainer to sprinkle 1 cup of baking soda evenly across the mattress. Allow the baking soda to sit on the surface for one hour. Then vacuum the mattress for a fresh, odor-free surface.

LINENS: Swap out heavier comforters and blankets for lightweight, breathable layers for spring. Using a solid-color quilt and matching shams, along with a set of bright, neutral sheets, is an excellent way to make your retreat feel like a freshly prepared resort. Keep decorative pillows to a minimum for a look that's less fussy.

TOILET: The dreaded "toilet ring" is an unsightly thing that no one wants to encounter or talk about. If you've struggled with chemicals and cleansers to get your toilet bowl ring-free, try using a pumice stone from your local hardware store. Thoroughly wet this magic tool with water, and with one or two minutes of gentle scrubbing, you'll have your toilet looking like new.

HOUSEPLANT HELP

One of the best things about living in a mid-century home is the abundance of natural light. Indoor/outdoor living has been a driving force behind the ideology of these homes from the very beginning, and that translates to plants just as much as to people.

With proper care, houseplants can thrive in mid-century homes, but this seamless flow between environments also has the potential to invite nasty pests that can jeopardize your plant's health.

If you've ever struggled with invasive creatures such as thrips, aphids or mites, try using an organic, nontoxic biopesticide before chucking yet another plant into the trash. Look for products that have active ingredients of corn oil and soybean oil, because these create a protective coating to give your plants a stronger defense. Outdoors, use a garden pump sprayer for the best overall coverage and easy access to the underside of leaves.

Tip: Take this opportunity to apply an indoor/outdoor insect killer around doors and windows to prevent pests from entering or re-entering your home.

GIVE YOUR BEDDING A CLEAN, MODERN PROFILE BY TUCKING THE TOP SHEET AND QUILT BENEATH THE MATTRESS.



MIRRORS: Eliminate fog from forming on your bathroom mirror by placing a small dollop of shaving cream on a soft, lint-free cloth. Buff the shaving cream onto the mirror evenly until the surface is clear.

CLOSET: Give your closet luxurious form and function by investing in a set of quality wood hangers to replace flimsy, mismatched plastic and wire types.

STORAGE: Get your "vintage furniture" fix by scouting a quality cedar chest. This unique piece of furniture is ideal for storing bulky items such as sweaters and blankets when they're not in use during the warmer months. The natural properties of cedar ward off insects and mold from destroying your most cherished items. At the foot of a bed, it also acts as a perfect place to put on your socks and shoes. 

PHOTO BY TRAVIS PACHECO



Robert Maurer is the creative director and residential designer at Commuter Industries. In this column, he shares highlights from his home that are geared toward design, entertaining, restorations, home improvements, recipes, décor and more. We hope you'll find inspiration in these features that you can apply to your own mid-century home and way of life. Find more project inspiration at midcenturymaurer.com.

FUEL UP

If you're struggling to find the motivation to dive into deep-cleaning mode, a bright, sunny breakfast is the perfect place to start.

Try this recipe with a modern desert flair to get the refreshing inspiration you need:

DATE NUT CACTUS CAKES

YIELD: 4 servings

INGREDIENTS

1 c. rice flour (GF)
2 tsp. baking powder
1 tsp. baking soda
¼ tsp. salt
1 c. buttermilk
2 Tbsp. prickly pear syrup
2 Tbsp. canola oil, plus more for griddle
1 egg
½ c. chopped and pitted dates
½ c. chopped walnuts
Garnish: coconut flakes, fresh raspberries

DIRECTIONS

1. In a medium mixing bowl, whisk together flour, baking powder, soda and salt.
2. In a separate bowl, whisk together buttermilk, syrup, oil, egg, dates and walnuts. Add dry ingredients to wet ingredients, gently stirring for a slightly clumpy texture. Do not over-mix.
3. Heat griddle surface over medium-high heat. Carefully and evenly oil the surface. Use a measuring cup to pour the batter onto the griddle, making tapered oval shapes in various sizes.
4. Cook for 1 to 2 minutes until bubbles appear on the surface of each cake. Flip with a spatula and cook until lightly browned (about 1 to 2 minutes). Layer various cakes on a plate to create a cactus shape. Garnish with fresh raspberries and coconut flakes. Serve right away.

Tip: Add a few drops of red food color to the batter for fluffy, pink pancakes that enhance the prickly pear color.

SERVE WITH A SUNNY-SIDE EGG AND PRICKLY PEAR SYRUP FOR A VIBRANT DESERT-STYLE PLATE.



Made in America
Made to Order
Made to Last

copeland

FURNITURE

COPELANDFURNITURE.COM





A Garden Apartment Makeover

This small Palm Springs vacation condo was transformed from a tired “tennis unit” into a retro gem.

Written and Photographed by **Ken MacIntyre**

Tucked away in the sleepy Palm Springs neighborhood of Araby Commons is CoCo Cabana, a former Mid-Century Modern garden apartment hotel that, for many, is the picture of desert leisure living.

The “CoCo,” as it’s known, was built in 1955 as a vacation destination for the “inconspicuously affluent” and later became a magnet for Palm Springs tennis fans when the sport captured the zeitgeist in the 1970s. To capitalize on this fervor, 16 new apartment accommodations were built at the CoCo in 1971, doubling its capacity. They were branded as the “tennis units.”

I procured one of these coveted units some 40 years after the CoCo’s 1977 condominium conversion, and while the intervening years had been gracious enough to this iconic property, my one-bedroom, 700-square-foot vacation home was in need of a facelift.

ALL THE RIGHT MOVES

Its terra-cotta-red floor tiles, brown marble countertops and obtrusive kitchen bulkhead all made it feel very dark and dated; and, despite the CoCo being surrounded with beautiful mountain views, you had to step outside to fully enjoy them.

Wanting to meld indoor-outdoor living and create an open layout that was bright, welcoming and harmonious with the CoCo's mid-century origins, I set to work with these goals in mind.

After removing the period-inappropriate oversized sofas and other generic décor that came with the purchase, the tennis unit's untapped potential became apparent.

In order to brighten things up, the dingy Spanish pavers were replaced throughout with new, hexagonal terrazzo-style ceramic tiles—a unique flooring that gave a nod to the CoCo's mid-century style and helped increase the condo's visual appearance by reading as one cohesive space.

SMART SALVAGING

When it came to the galley-style kitchen, its original wood cabinetry was intact and only needed some fresh paint and new hardware. I replaced the dated marble countertops with fresh, clean quartz and removed the bulkhead. By taking away these upper cabinets, I sacrificed storage—but I gained the open and welcoming appearance I'd envisioned.

Additionally, by covering the entire living room wall with a floor-to-ceiling mirror, Palm Springs' beautiful mountain views were pulled inside the unit; and, much like the floor tile, it increased the condo's visual square footage and brightened up the space.

STYLE-MAKING WITH OLD AND NEW

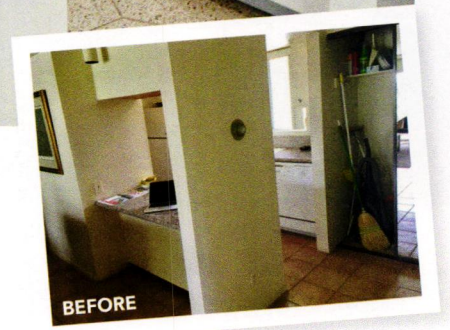
The finishing touch came via period-appropriate décor and furniture.

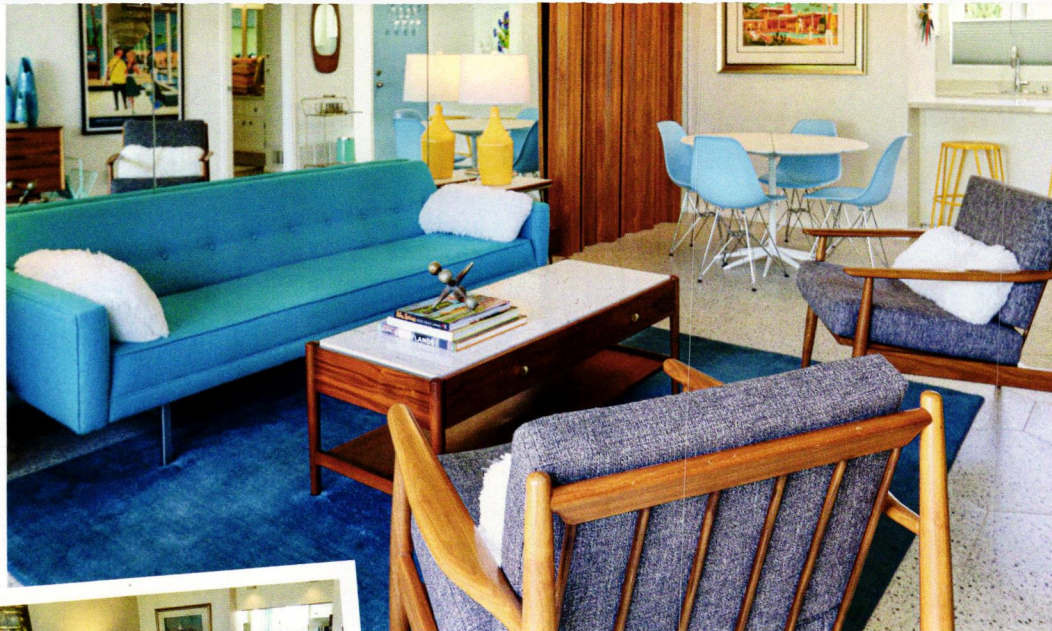


THE WOODEN SCREEN IS AN EAMES MOLDED PLYWOOD SCREEN THAT'S TRADITIONALLY USED AS A ROOM DIVIDER. THE AUTHOR PUT IT THERE TO DEFINE THE EATING/DINING AREA. ALSO, BECAUSE THE ENTIRE WALL IS MIRRORED, HE DIDN'T WANT THE BATHROOM TO BE REFLECTED. AS A RESULT, THE PLYWOOD SCREEN ALSO SERVES A PRACTICAL PURPOSE: IT BLOCKS THE REFLECTION FROM THE BATHROOM AREA.



REMOVING THE UPPER CABINETS MADE THE SMALL GALLEY KITCHEN FEEL MORE BRIGHT AND OPEN. REPLACING THE OLD, DARK MARBLE COUNTERTOPS WITH WHITE QUARTZ COUNTERTOPS ADDED TO THE NEW, LIGHT-AND-BRIGHT FEEL.





THE SMALL, 700-SQUARE-FOOT APARTMENT PACKS A LOT OF STYLE PUNCH WITH A FEW STRATEGIC MOVES—SUCH AS ADDING A MIRROR WALL AND NEW TERRAZZO TILES, WHICH ENHANCE THE OPEN FLOW OF THE FLOORPLAN.



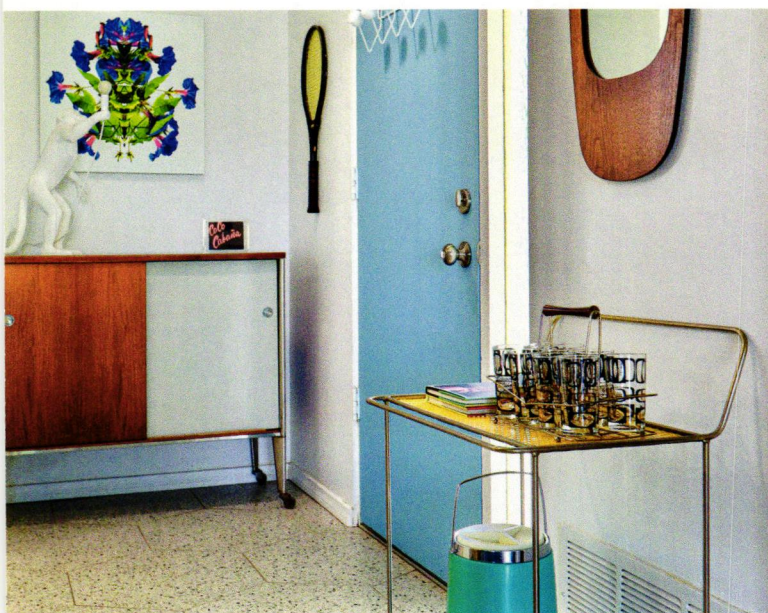
Vintage pieces were sourced locally at shops such as Dazzles, BLVD (both have since shut down) and Era Gallery in nearby Redlands, while contemporary furnishings came from West Elm's mid-century-inspired line. The Palm Springs Vintage Market and Grace Home Furnishings were great stops for accessories, as were the various antique malls off Sunny Dunes in the Warm Sands neighborhood.

Lastly, in order to help meld past and present, my tennis unit's walls were adorned, not with photos of tennis greats Jimmy Connors or Billy Jean King, but with contemporary works of days gone by from Southern California artists, including Danny Heller, Gary Dorothy and Shag.

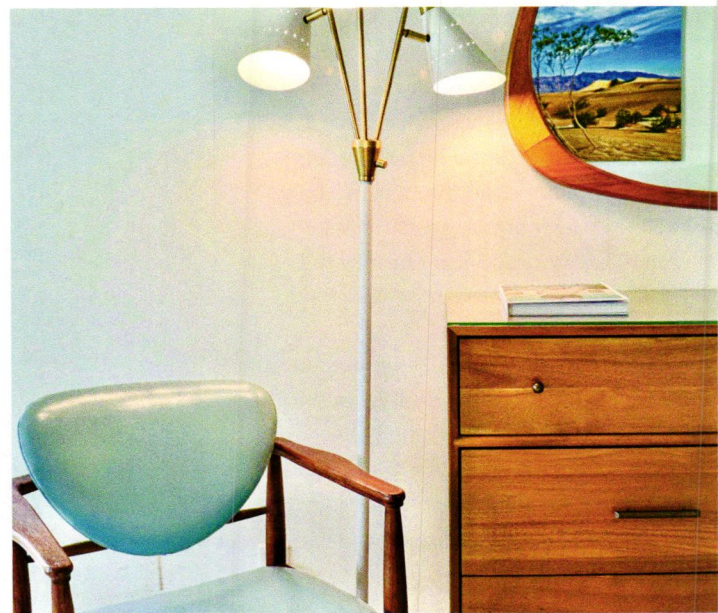
By allowing both old and new to coexist, whether through layout, finishes or furnishings, this refreshed tennis unit now delivers the desert leisure lifestyle that CoCo Cabana is known for. 🌵

Ken MacIntyre is the creator of Modtraveler.net: An Enthusiast's Guide to Modernism and the author of *CoCo Cabana: Designed for Gracious Living*. Follow Ken on Instagram @modtraveler.

SEE SOURCES, PAGE 86



THE AUTHOR CHOSE THIS BLUE COLOR FOR THE INTERIOR FRONT DOOR. IT DEFINITELY SETS THE TONE FOR THE ROOM. APPARENTLY, THE ORIGINAL DOORS WERE SOLID WOOD, BUT THEY HAD BEEN PAINTED OVER MANY TIMES.



VINTAGE FURNISHINGS FROM LOCAL SPOTS SUCH AS THE PALM SPRINGS VINTAGE MARKET AND THE ANTIQUE MALLS OFF SUNNY DUNES IN THE WARM SANDS NEIGHBORHOOD IMBUE THE ROOMS WITH VINTAGE CHARACTER.

SIPARILA


Sustainably sourced
genuine wood cladding



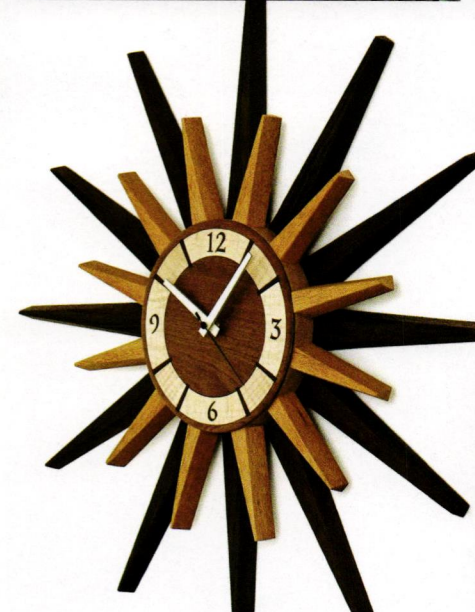
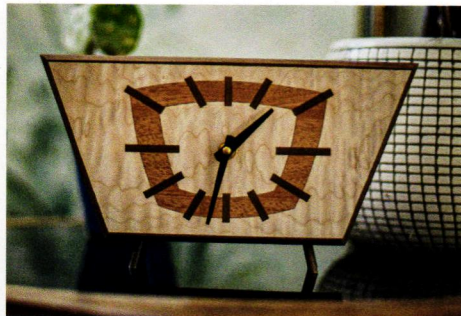
cpsupply.us/Siparila

siparila@cpsupply.us

406-414-0786

Follow us:  @siparila

<https://www.siparila.com/>



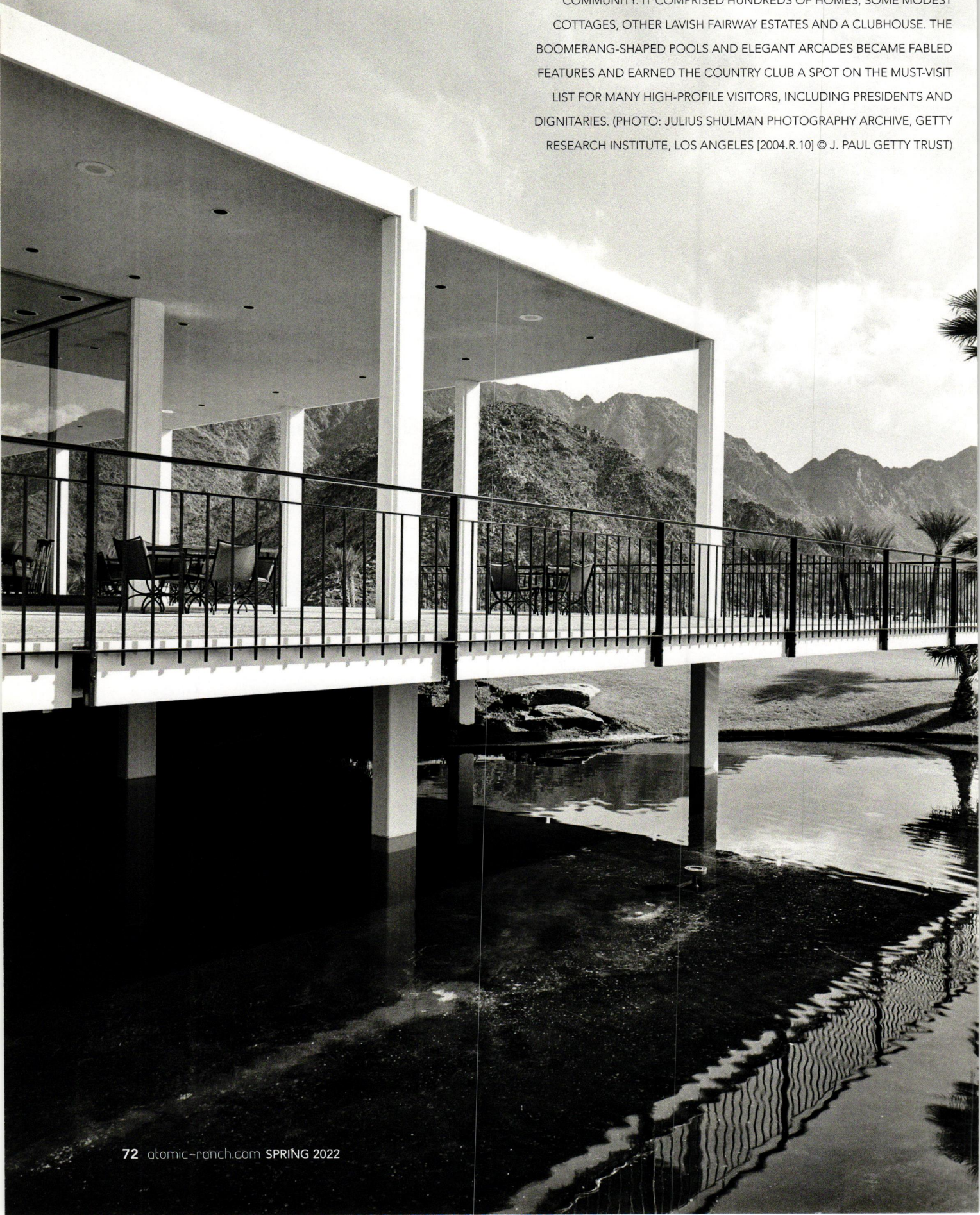
BLACKWELL  WOODWORKS

HANDMADE
CLOCKS AND
DECOR MADE
ENTIRELY FROM
UP-CYCLED
GUITAR SCRAPS!

BLACKWELLWOODWORKS.COM



A VIEW FROM THE NORTHWEST VANTAGE POINT OF THE EL DORADO COUNTRY CLUB. THE CLUB, BUILT IN 1959, WAS REALLY MORE LIKE A PLANNED COMMUNITY. IT COMPRISED HUNDREDS OF HOMES, SOME MODEST COTTAGES, OTHER LAVISH FAIRWAY ESTATES AND A CLUBHOUSE. THE BOOMERANG-SHAPED POOLS AND ELEGANT ARCADES BECAME FABLED FEATURES AND EARNED THE COUNTRY CLUB A SPOT ON THE MUST-VISIT LIST FOR MANY HIGH-PROFILE VISITORS, INCLUDING PRESIDENTS AND DIGNITARIES. (PHOTO: JULIUS SHULMAN PHOTOGRAPHY ARCHIVE, GETTY RESEARCH INSTITUTE, LOS ANGELES [2004.R.10] © J. PAUL GETTY TRUST)





ABOVE, LEFT: A PORTRAIT OF WILLIAM CODY (PHOTO: WILLIAM F. CODY PAPERS AND WILLIAM F. CODY PAPERS 2, SPECIAL COLLECTIONS AND ARCHIVES, ROBERT E. KENNEDY LIBRARY, CALIFORNIA POLYTECHNIC STATE UNIVERSITY, SAN LUIS OBISPO, CALIFORNIA)

The Man Who Defined the

By Jackie Torres

Photography courtesy of Monacelli

Desert

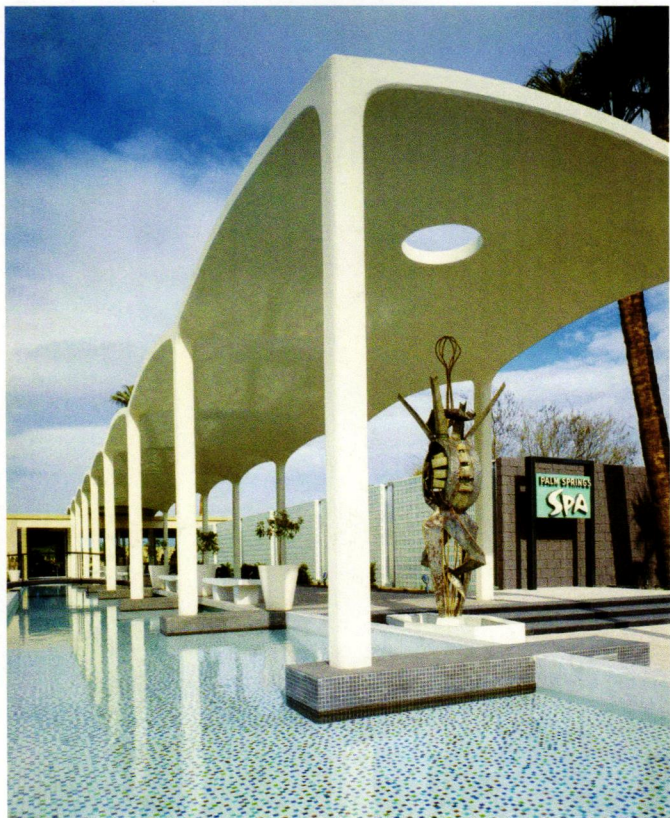
Learn about William Cody, the iconic architect who designed some of Palm Springs' most timeless structures.

At the intersection of luxury design, West Coast spirit and modernist innovation stands William F. Cody.

Cody is the man responsible for many of Palm Springs' most iconic landmarks, homes and public spaces. And while he only designed and produced his works for a span of 25 years, they have collectively come to stand as emblems of Desert Modernism.

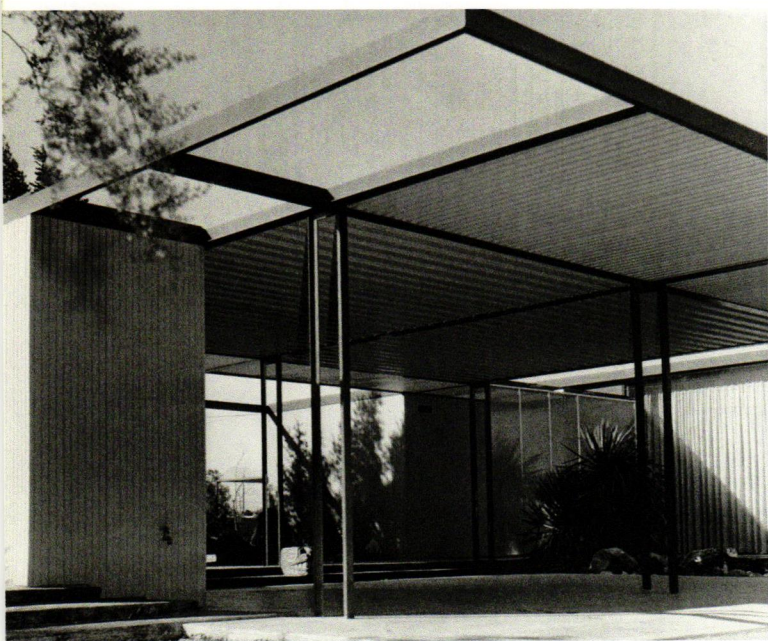
Who, exactly, is this man whose works both culminated in, and influenced, post-World War II Modernism as a whole?



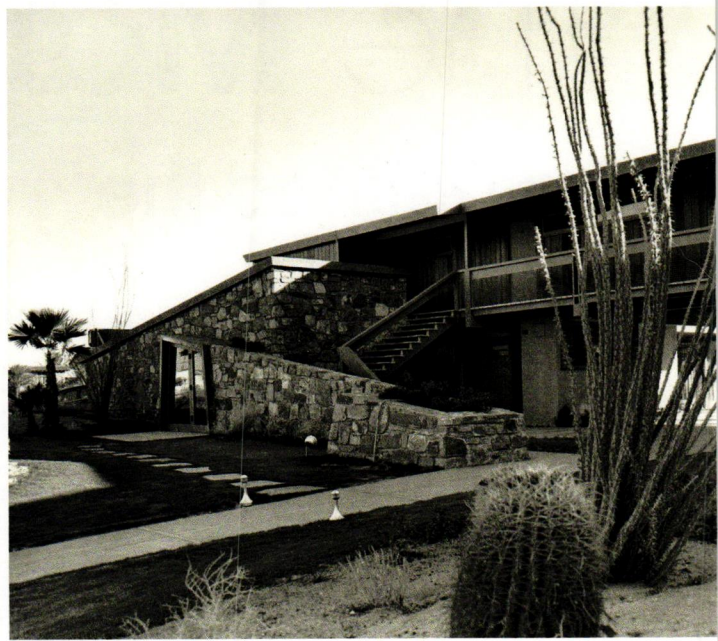


ABOVE, LEFT: THE SIGNATURE VAULTED CEILINGS OF THE PALM SPRINGS SPA'S CONCRETE ARCADE SPANNED AN ENTIRE BLOCK. THEY REPRESENT CODY'S FEARLESS EMBRACE OF SURFEIT LAVISHNESS. THE BUILDING (WHICH WAS RAZED IN 2014, DESPITE WIDE OPPOSITION) WAS A "SYMPHONY" OF MATERIALS, INCLUDING TERRAZZO, RIVER ROCKS, PLANTER PEBBLES AND DECORATIVE TILE, WHICH SUCCESSFULLY COMPLEMENTED THE ELEGANCE OF THE STUNNING VIEWS OF THE SAN JACINTO MOUNTAINS AND THE NATURAL MINERAL SPRING WATERS OF THE SITE. (PHOTO: JULIUS SHULMAN PHOTOGRAPHY ARCHIVE, GETTY RESEARCH INSTITUTE, LOS ANGELES [2004.R.10] © J. PAUL GETTY TRUST)

BELOW: "CODY WAS ONLY 31 YEARS OLD WHEN HE DESIGNED THE DEL MARCOS APARTMENT HOTEL (IN 1947), A PROJECT THAT BROUGHT HIM INTERNATIONAL ATTENTION," THE BOOK'S AUTHORS WRITE. ITS STRONG ABSTRACT FORMS AND LUXURIOUSLY LARGE LIVING ROOM WINDOWS, WHICH PROPELLED GUESTS INTO THE CONCEPT OF INDOOR-OUTDOOR LIVING, WERE CATALYSTS FOR THE REPUTATION OF PALM SPRINGS AS A LAND OF PROMISE AND LEISURE. (PHOTO: JULIUS SHULMAN PHOTOGRAPHY ARCHIVE, GETTY RESEARCH INSTITUTE, LOS ANGELES [2004.R.10] © J. PAUL GETTY TRUST. GETTY RESEARCH INSTITUTE)



ABOVE, LEFT: CODY'S OWN FAMILY HOME, BUILT IN 1952 IN PALM SPRINGS, WAS HIS JUNCTURE WITH FELLOW STEEL-FRAMED RESIDENCE DESIGNERS SUCH AS RICHARD NEUTRA, MIES VAN DER ROHE AND PHILLIP JOHNSON. IT TOOK HIM SIX YEARS TO DESIGN THE STRUCTURE, WHICH HAD 3-INCH-SQUARE COLUMNS AND A ROOF THAT WAS JUST 4 INCHES DEEP. SIXTEEN GLASS, FLOOR-TO-CEILING SLIDING DOORS ENCOMPASS THE HOME, RESULTING IN EXPANSIVE SPACES THAT FEEL UNDIVIDED. (PHOTO: GAIL B. THOMPSON, GAYLE'S STUDIO, COURTESY OF TRACY CONRAD)



In *Master of the Midcentury: The Architecture of William F. Cody*, a trio of experts—Cody's daughter Catherine Cody, design historian Jo Lauria and architectural historian Don Choi—come together to create a comprehensive book that profiles Cody's complete works. Catherine provides the full archive of her father's work; in fact, Cody had actually appointed her to begin writing his life story five years before he passed away.

Because this book features, elucidates and meticulously discusses Cody's projects, Cody fans will appreciate seeing the



THE CRANK-GARLAND RESIDENCE AT THE DESERT BEL AIR ESTATES IS THE FIRST OF 100 HOME SITES CODY DESIGNED FOR DEVELOPER FILLMORE CRANK IN PALM DESERT (NOW INDIAN WELLS), CALIFORNIA. FULL-HEIGHT WINDOWS ON THREE SIDES OF THE LIVING ROOM LOOK OUT ONTO A DEEP PORCH AND THE POOL. HERE, CODY USED HIS TRADEMARK “HUSH AND FLUSH” WINDOW DETAILS. WHILE THE HOUSE HAS BEEN REMODELED SEVERAL TIMES OVER THE YEARS, ITS CURRENT RESIDENTS EMBARKED ON A LARGE-SCALE RESTORATION. THE HOME IS NOW A DESIGNATED HISTORICAL LANDMARK. (PHOTO: JAMES BUTCHAR)

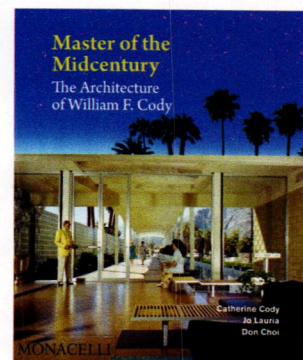
breadth of his work. And while he is mostly associated with Palm Springs, his work actually spans regions as diverse as California’s Bay Area, Mexico and Honduras.

If you’re just learning about Cody, you’ll be captivated by his influence on design. It was the result of casual pragmatism and realism. Even so, it has had a major lasting impact on modern living. For example, it was Cody who suggested to Thunderbird Country Club developer Johnny Dawson and golf course designer Lawrence Hughes that home lots be placed along the golf course “with no obstructions between the house and the fairway,” Choi writes.

While his contemporaries (among them William Krisel) and close friends A. Quincy Jones and Frederick Emmons were spreading modernist designs intended to be duplicated for the masses, Cody was more motivated by addressing practical concerns for individual locations and circumstances.

Project by project, Catherine Cody, Jo Lauria and Don Choi present each design in both historical and architectural contexts, thereby giving readers a full-bodied understanding of the accomplishments, innovations and inspiration behind such iconic locales as the Del Marcos Hotel, the famed El Dorado Country Club and the Abernathy residence.

It’s a true joy to see these properties through all four “lenses”—and, most intimately, through the lens of the architect himself. 🌀



MASTER OF THE MIDCENTURY: THE ARCHITECTURE OF WILLIAM F. CODY; CATHERINE CODY, JO LAURIA AND DON CHOI; PUBLISHED BY MONACELLI; © 2021; MONACELLI.COM. ALSO AVAILABLE AT DESTINATIONPSP.COM.



LOUIS POULSON PENDANT
LIGHTS FROM LUMENS
PUNCTUATE THE SPACE IN
AUTHENTIC PERIOD STYLE.

Retracing Mid Century

Tour the kitchen and dining room to see a colorful, yet classic, reimagined MCM design in the latest installment of our 2021 Project House Austin series.

By **Laura Shimko**
Photography by **Chase Daniel**
Styled by **Whitney Smelser**

At first glance, both the kitchen and dining room have many features characteristic of Mid Century Modern design.

In his work as the architect and builder for this project, Michael Wray sought to bring together the best of MCM while also allowing for modern necessities.

“We try to honor classic Mid Century architecture with classically ratioed transoms, floor-to-ceiling windows, timber beams and



authentic Eichler siding," he points out. "However, we've modernized the spaces for current market expectations."

For these two spaces, interior designer Christine Turknnett used texture and color to create a take on Mid Century design that's infused with contemporary elements.

"It was an opportunity to think differently," she says. "Overall, what inspired me was the idea of rethinking MCM design in the context of a new build. I feel that there's a lot of connection between the two, and I wanted to see how they played off each other."

TOP, LEFT: CHAIRS AND A WALNUT DINING TABLE FROM KARDIEL BRING WARMTH AND A DISTINCT MCM FLAVOR TO THE DINING ROOM. "I LIKE MIXING WOODS AND ADDING DEPTH THROUGH THE CONTRAST OF WOOD TONES," CHRISTINE SAYS. "I DON'T WANT THINGS TO COMPETE." THE TEAL RUG BY FLOR HAS GRAY ACCENTS THAT PLAY OFF THE GRAY FABRIC KARDIEL CHAIRS. EICHLER SIDING GRACES THE CEILING, THUS CONNECTING TO BOTH THE KITCHEN ISLAND AND THE EXTERIOR SIDING.

TOP, RIGHT: EXPOSED BLACK BEAMS PRESENT A STRIKING, BOLD LOOK AND ARE ARCHITECT MICHAEL WRAY'S NOD TO CLASSIC MID CENTURY MODERN DESIGN. THE LARGE ISLAND, TOPPED WITH A COUNTERTOP FROM ARCHITECTURAL SURFACES, IS ANOTHER MAJOR FOCAL POINT. IT PROVIDES THE PERFECT SPACE TO PREP, ENTERTAIN AND ENJOY MEALS. "IT HAS A DOMINANT PRESENCE. AS A RESULT, I WANTED TO BALANCE WOOD TONES IN THE APPLIED EICHLER SIDING AGAINST THE WHITE COUNTERTOPS SO THAT IT DOESN'T FEEL TOO HEAVY OR ETHEREAL," CHRISTINE TURKNETT ADDS. THE OPEN FLOOR PLAN—A CONTEMPORARY INFUSION OF FUNCTIONALITY—ALLOWS FOR PLENTY OF ROOM AROUND IT. "I'VE ALWAYS LOVED A CIRCULAR FLOW," MICHAEL SAYS. "ACCESS FROM MULTIPLE POINTS MAKES KITCHEN AREAS, IN PARTICULAR, MORE EFFICIENT AND LIVABLE."





ABOVE: JUST BEHIND THE ISLAND, WE GET A PEEK AT THE BUTLER'S PANTRY—ANOTHER ADDITION THAT REFLECTS CURRENT EXPECTATIONS. "THE BUTLER'S PANTRY SPECIFICALLY FUNCTIONS AS A HOME WORKSPACE AND WET BAR, ALONG WITH FLOOR-TO-CEILING CABINETRY THAT HELPS DIVIDE THE USES," MICHAEL SAYS. WITH MATCHING MINT LOWER AND WHITE UPPER CABINETS, IT TIES INTO THE LARGE FRAMEWORK OF THE KITCHEN SPACE WITH A COHESIVE DESIGN.

OPPOSITE: THE ARCHITECTURAL DESIGN PLAYS TO THE CONTEXT OF THE HOME'S LOCATION IN AUSTIN, TEXAS. "MY FAVORITE ELEMENT OF THE HOME IS THE LINEARITY OF THE MAIN LIVING AREA AND HOW THE CEILING LINES FOLLOW THE HORIZON LINE OF BEE CREEK COVE, IN WHICH THIS HOME IS LOCATED," MICHAEL SAYS. "FOLLOWING THE LEAD OF THE NATURAL SITE ONLY ENHANCES THE BEAUTY AND AESTHETIC APPEAL OF ANY HOME."

In her selection of pieces, Christine drew from the simple geometric shapes of the Bauhaus movement, as well as from Scandinavian styles.

"The Louis Poulsen pendants over the kitchen are transcontinental and iconic, but they also offer a conversation between American Mid Century Modern design and how Scandinavian design influenced that," she explains.

COUNTER POINT

Photos courtesy of **Architectural Surfaces**

Selecting the right countertop is essential for any kitchen remodel. Not only should you consider the durability and maintenance of whatever counter material you choose, you should also consider how it impacts and enhances the look and feel of the space.

The counters in the Project House kitchen are from the MetroQuartz collection by Architectural Surfaces. An engineered stone, MetroQuartz provides the same look and feel of natural stone and also offers durability and easy maintenance.

To ensure your counter space is stylish, as well as functional, check out these top MetroQuartz picks from our sponsors at Architectural Surfaces:



UNIQUE CALACATTA: The soft-gray veining against a crisp, white background is perfect for those wanting a simple, yet sophisticated, finish for their kitchen. Choose this if you want a more subtle look for your countertops.



UNIQUE CALACATTA BLACK: Go for a more dramatic statement while still keeping it classic with this bold, dark veining. The natural stone look adds a sense of timelessness to any space.



UNIQUE CALACATTA GOLD: The light-gold-toned veining adds a warm touch and an elegant element.



BIANCO ASPEN: This soft finish has flecks of gray, making it a great choice for a more colorful kitchen palette. The neutral design allows for other colors and patterns to stand out in your space.



ICE: Nothing says "classic" like this finish. Light speckling against a white background is another good choice for those wanting their countertops to serve as a balance of simple neutrals in their kitchen design.

WHILE BARELY VISIBLE FROM A FRONT VIEW OF THE KITCHEN, THERE'S A SURPRISE POP OF COLOR AROUND THE SIDE OF THE ISLAND—THE MINT-COLORED LOWER CABINETS. CHRISTINE DECIDED ON A MUTED PALETTE TO BALANCE AND COMPLEMENT THE ABUNDANCE OF NATURAL LIGHT, AS WELL AS TO GIVE THE SPACE A TIMELESS FEEL. "COLOR CAN SOMETIMES BE INTIMIDATING, BECAUSE IT'S A BIG COMMITMENT. HOWEVER, I WANTED PEOPLE TO HAVE THEIR OWN SPECIAL SPACE IN WHICH THEY COULD FEEL HAPPY BUT THAT DIDN'T DOMINATE THE ENTIRE OPEN FLOOR PLAN," SHE SAYS. "I WANT PEOPLE TO SMILE WHEN THEY SEE IT—AN UNEXPECTED JOY!"





FINDING BALANCE

To craft a fresh, yet recognizable, MCM design within the context of a newly built home, Christine focused on creating a balanced look and feel for both the kitchen and dining room through her use of color and textures.

She chose mint for the lower cabinets in the kitchen as a pop of color that also ties in with teal accents in the dining area, thereby unifying the two spaces.

"So much of the design was driven by the color palette, but I wanted to make sure it was balanced," she says. "Even if the colors are different, they have similar tones that give the spaces more depth rather than the same shade everywhere."

Instead of trying to minimize elements such as the exposed black beams, open floor plan and abundance of windows, Christine found ways to balance and work with these features.

She chose white upper cabinets to complement the high ceilings and the abundance of natural light and went with the oak flooring and Eichler siding on the kitchen island and dining room ceiling to add warmth.

"Part of my design philosophy is holistic: Let the architecture set the tone for interiors instead of competing with it or rejecting it," she clarifies. "We did a lot of white in the interior to balance negative space. After all, the architecture has so much glass and so many windows, and I didn't want to distract from that." 🌿

MICHAEL DESIGNED WALLS OF WINDOWS AROUND THE DINING ROOM AS ANOTHER REFERENCE TO MID-CENTURY ARCHITECTURE, WHICH OFTEN INCLUDES FLOOR-TO-CEILING WINDOWS AS A WAY TO CONNECT INDOOR AND OUTDOOR SPACES. THE EICHLER SIDING-CLAD CEILING IS ANOTHER DESIGN CHOICE THAT BRINGS TOGETHER THE EXTERIOR AND INTERIOR DESIGN. "WE USED THE SAME MATERIALS FROM THE EXTERIOR BUT JUXTAPOSED THEM IN DIFFERENT WAYS: WHITE WALLS, EICHLER SIDING AND NATURAL LIGHT," CHRISTINE POINTS OUT. A BEAUTIFUL PENDANT LIGHT FROM LUMENS CROWNS THE SPACE WITH CIRCULAR ELEMENTS THAT HELP BREAK UP THE GEOMETRY OF THE SPACE WHILE COMPLEMENTING THE ATOMIC PATTERN OF THE FLOR RUG.

SEE SOURCES PAGE 86

Lume Home. Original lamps to illuminate your life.

*Cast a new light
on your home.*

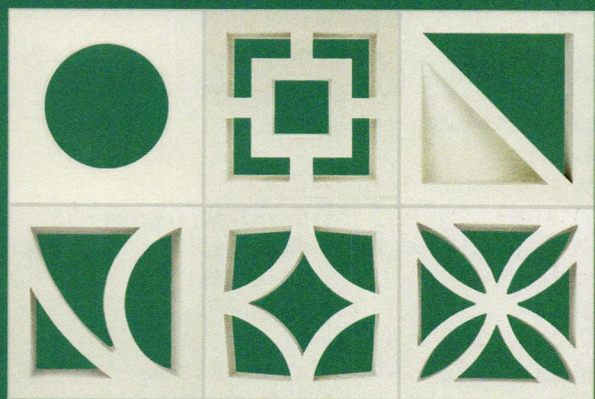
Lume Home (pronounced loom, as in to illuminate) makes original ceramic lamps inspired by mid-century modernism that bring handmade warmth and distinction to every room. These midcentury-inspired lamps are customized by your choice of glaze, texture, and wood and are individually artisan-made and assembled with care in Portland, Oregon.



Visit us today to order yours LUMEHOME.COM
Use code AR10 for 10% off

TESSELLE

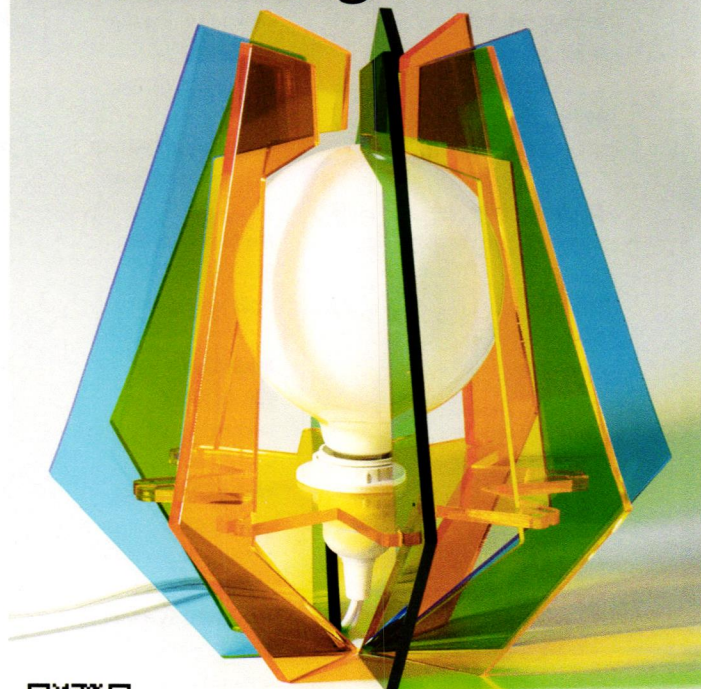
Concrete Breeze Block



Free Delivery + Save up to 30%
tesselle.com

Save \$10 on your sample order with code ATOMIC-10

introducing...



ASTROLUMA Lighting Collection
Four groovy atomic styles in retro-licious colors.
Made in Los Angeles. Ltd Edition. Get yours at

AtomicMobiles.com

request a free Art Catalog

secret discount code: AR10

atomicadvertisers

ACCESSORIES & ARTWORK

Art of Scooter 13
artofscooter.com

Atomic Mobiles 83
atomicmobiles.com

Blackwell Woodworks 71
blackwellwoodworks.com

**Christian Musselman
Illustration** 60
christianmusselman.com

Hip Haven 89
512-462-4755
hiphaven.com

La Chica Art 85
kathleenstrukoff.com

Matthews Fan Company 6
MatthewsFanCo.com

Memory Art Girl 61
memoryartgirl.com

Modern House Numbers 85
modernhousenumbers.com

Modern Retrograde 88
etsy.com/shop/modernretrograde

TedStuff 27
561-272-0770
tedstuff.net

The Shag Store 3
760-322-3400
shagstore.com

Wall Star Graphics 89
wallstargraphics.com

ACCOMMODATIONS & MCM LIFESTYLE

Mod Traveler 62
modtraveler.net

DESIGN RESOURCES & BOOKS

Asheford Institute of Antiques 88
877-444-4508
asheford.com

INTERIOR & EXTERIOR DESIGN & FINISHES

**American Tile Makers/
B&W Tile** 87
310-538-9579
bwtile.com

Breathe Design Studio 23
512-994-0350
breathedesignstudio.com

Clayhaus 60
503-928-3076
clayhaustile.com

CP Supply 71
406-414-0786
cpsupply.us/siparila

Ginkgo Leaf Studio 85
262-376-5050
ginkgoleafstudio.net

Make It Mid Century 89
makeitmidcentury.com

Modbox USA, Inc. 61
919-332-0894
modboxusa.com

Modernous 29
206-430-1966
modernous.com

Motawi Tileworks 21
734-213-0017
motawi.com

Nana Wall System Inc. 9
800-873-5673
nanawall.com

Tesselle 83
tesselle.com

Vintage Plywood Millworks 22
415-883-5300
vintageplywood.com

LIGHTING

Lume Home LLC 83
lumehome.com

Lumens 92
855-210-4486
lumens.com

Modilumi 87
modilumi.com

Modular International 27
412-734-9000
modularinternational.com

Practical Props 63
818-980-3198
shop.practicalprops.com

Remcraft 11
800-327-6585
atomicremcraft.com

MID-CENTURY REALTORS

Margaret Mikkelsen 21
901-896-2992
modernmemphishomes.com

Mid Century Homes 19
mid-centuryhomes.com

Modern Homes Portland 87
971-285-7955
modernhomesportland.com

Modern Illinois 89
312-907-4085
modernil.com

Talia Freedman and Co. 29
505-263-7892
abq-realty.com

MODERN FURNISHINGS

Anthony LaMorte Furniture 62
775-772-8622
anthonylamorte.com

Casara Modern 22
714-317-9342
casaramodern.com

Copeland Furniture 67
copelandfurniture.com

H3K Design 7
760-325-5400
h3khome.com

Hunt & Noyer Furniture 62
313-731-2485
huntandnoyer.com

Kasala 17
206-838-8000
kasala.com

Kerf Design 91
206-954-8677
kerfdesign.com

Modwalls 63
877-439-9734
modwalls.com

Moku Artisan 2
moku-artisan.com

Norell Furniture 15
norellfurniture.com

Teamson 25
teamson.com

VINTAGE STORES & FURNITURE REHAB

**Evans Family Company —
Fagas Straps** 88
858-461-8069
fagasstraps.com

Mid Century Store 85
619-295-4832
midcenturystore.com

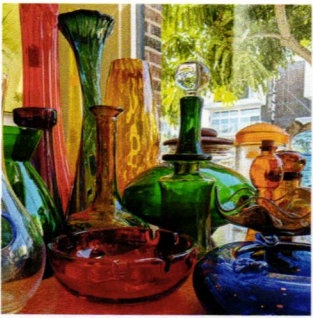


619-295-4832



San Diego's
mid-century
one-stop shop

midcenturystore.com



ginkgo leaf studio

LANDSCAPE DESIGN



15

YEARS OF SUCCESS
2007-2022

MILWAUKEE WI • BOZEMAN MT



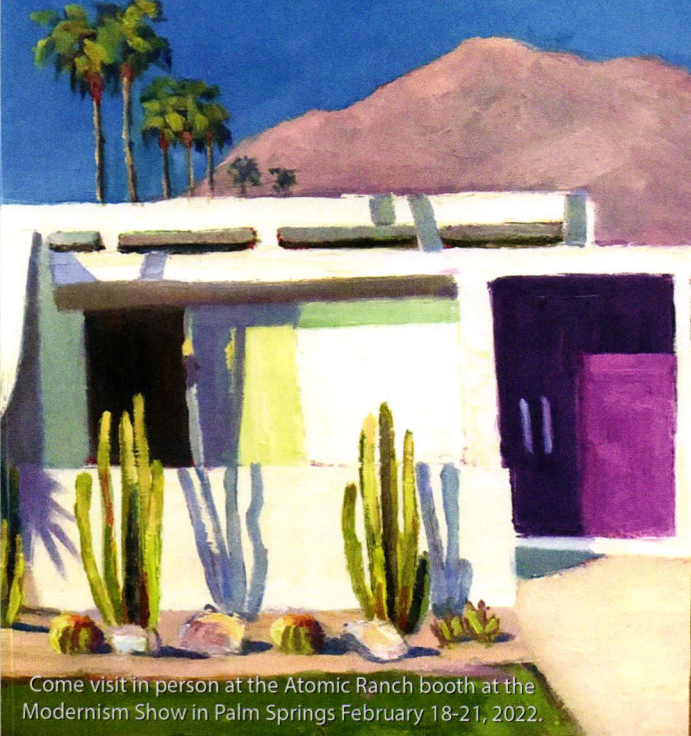
ginkgoleafstudio.net
262.376.5050



MODERN IMPRESSIONISM

Oil paintings, prints and mid-century modern commissions
available on the website

KATHLEENSTRUKOFF.COM



Come visit in person at the Atomic Ranch booth at the
Modernism Show in Palm Springs February 18-21, 2022.

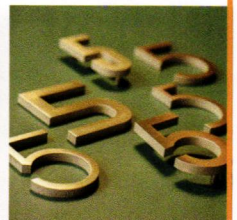
64

WE'VE GOT YOUR
NUMBER.




Numbers, letters, and plaques
crafted in Tucson, AZ.



MODERN | HOUSE | NUMBERS



MODERNHOUSENUMBERS.COM

"ATOMICRANCH" FOR A 10% DISCOUNT   

resources

The Perfect Palette

Page 30

Renovation team: H3K Design; h3kdesign.com
Lead furniture designer: Brian Wolbaum of H3K Home + Design. Hoyt Construction; hoytconstruction@yahoo.com
Rental information: "Palm Breeze" on ACME; acmehouseco.com

Exterior Paint

Dunn Edwards "Whisper" white (DEW340) and "Fairytale Dream" (DE5113); dunnedwards.com

Backyard Exterior

White bar stools, blue and white umbrellas, hanging chair, string chairs, outdoor dining table and chairs, and outdoor seating area furniture set: H3K Home & Design; (844) 435-1144 or h3khome.com
Yellow chaise lounges: True Value; truevalue.com

Living Room and Dining Area

Custom pegboard TV stand: Jeff Teel
Rug: Carpet squares from Flor; (866) 952-4093 or flor.com
Sectional: Joybird; joybird.com
Credenza: Kardiel; kardiel.com
Gray chairs, metal sculpture, green barstools, dining table and chairs, and gold lamp: H3K Home & Design; (844) 435-1144 or h3khome.com
Wooden serving tray and green juicer: Vintage

Guest Bedroom and Breeze Block Door

Pink phone in hallway: Vintage find
Orange glass pieces: Vintage find from Antique Galleries of Palm Springs; (760) 322-8740 or antiquegalleriespalmsprings.com
Wallpaper: Wayfair; wayfair.com
Rug, lamp and dresser: H3K Home & Design; (844) 435-1144 or h3khome.com
Bedframe: CB2; (800) 606-6252 or cb2.com

Green Guest Bedroom

GRASS rug and bedside tables: H3K Home & Design; (844) 435-1144 or h3khome.com
Wallpaper: Wayfair; wayfair.com

Pink Guest Bedroom

Rug and side tables: H3K Home & Design; (844) 435-1144 or h3khome.com
Wallpaper: Spoonflower; spoonflower.com
Lamps: LampsPlus; (800) 782-1967 or lampsplus.com
Bedframe: Joybird; joybird.com

Primary Bedroom and Office Area

Bedframe, rug, side tables, blue sitting chair and desk: H3K Home & Design; (844) 435-1144 or h3khome.com
Lamps: LampsPlus; (800) 782-1967 or lampsplus.com
Custom wallpaper: Photowall; photowall.com

Faucets: Moen Genta Collection; moen.com

Entryway

Bullet planter: H3K Home & Design; (844) 435-1144 or h3khome.com

It's Hip to Be Square

Page 40

Bar stools: All Modern; allmodern.com

Bed frames: Blu Dot; bludot.com

Bedside tables, glass console table in hallway, living room coffee table: At Home Palm Springs.com

Teal egg chair: Kardiel; kardiel.com

Office desk and chair, dining table and chairs: Scandinavian designs

Office coffee table: Etsy; etsy.com

Office and living room sofas: Joybird; joybird.com

Second bathroom pendant lights: Perigold; perigold.com

Faucet: Philippe Starck by Axor X; axor-design.com

Countertops: Cambria Newport; cambriausa.com

Tile sources: All floor tile, second bathroom tile: Modern Showroom

Principal bathroom: Crossville "Speakeasy"; crossvilleinc.com

Kitchen counter: Heath Ceramics; heathceramics.com

Patio lounger: H3K; h3k.com

Patio table & chairs: CB2; cb2.com

Atomic Orange

Page 50

Living Room

Leather couch: Joybird; joybird.com
Velvet couch: Jonathan Louis Furniture; jonathanlouis.net
Coffee table: Industry West; industrywest.com
Accent chair: Mario Bellini remake by Eternity Modern; eternitymodern.com
TV stand: Joybird; joybird.com
Artwork: Modern Retrograde; modernretrograde.com and Bend Goods; bendgoods.com

Sun mirror: Joybird; joybird.com

Gold lamp: Hudson Valley Lighting; hudsonvalleylighting.hvlgroup.com

Wallpaper: Heath Ceramics x Hygge and West; hyggeandwest.com

Dining Room

Table and chairs: Bend Goods; bendgoods.com
Starburst clock: Vintage

Blue Bedroom With Bed

Wallpaper (both): Justina Blakney x Hygge & West; hyggeandwest.com

Bedding: Kip & Co; kipandco.com

Light fixture: Vintage

Side table: Joybird; joybird.com

Rug: Vintage Moroccan

Blue Bedroom With Couch

Wallpaper (both): Mural by Danielle Nagel

Couch and desk: Joybird; joybird.com

Rug: Ruggable; ruggable.com

Yellow Bedroom

Wallpaper: Drop it Modern; dropitmodern.com

Bedding: Parachute; parachutehome.com

Artwork: Deny Designs; denydesigns.com

Ottoman: Secondhand

Chair: Joybird; joybird.com

A Garden Apartment Makeover

Page 68

Living Room

Sofa: George Nelson For Herman Miller; Modular Group Sofa, 1955

Side Tables: Vista of California, 1950s

Media console and coffee table: West Elm; (888) 922-4119 or westel.com

Dining Area

Dining Table: Richard Schultz for Knoll, 1960

Folding screen: Charles and Ray Eames, 1946

Art: The Refill by SHAG, 2011; shagstore.com

Bedroom

Dresser and wall mirror: West Elm; (888) 922-4119 or westelm.com

Front Door Entrance

Storage Cabinet: Raymond Loewy for Hill-Rom, 1950s.

Art: Morning Glory Rorschach by Gary Dorothy, 2017

Kitchen

Art: Poolside Lounge Chairs by Danny Heller, 2016; dannyhellerart.com

Retracing Mid Century

Page 76

Pendant lights, chandelier and barstools:

Lumens; (888) 532-2974 or lumens.com

Rug: FLOR; (866) 952-4093 or flor.com

Dining table and chairs: Kardiel; kardiel.com

Toaster: SMEG; smeg.com

Backsplash: Tableau by Ann Sacks & Kelly Wearstler; (949) 831-3333 or annsacks.com

Siding: Eichler; eichlersiding.com

Cabinets: Kentmoore; kmc.net.

Paint: Lower cabinets in "Supreme Green"; upper cabinets in "Pure White," Sherwin-Williams; sherwin-williams.com

Countertops: MetroQuartz in "True White," Architectural Surfaces; arc-surfaces.com

B&W Tile

Vintage Original Since 1949



Colors We Have Those!!

Come visit us www.bwtile.com

Call us 310-538-9579

Email us info@bwtile.com

Find a cool Mid-Century.
Sell your Contemporary home.



Marisa Swenson
MODERN HOME EXPERT



971-285-7955
Marisa@ModernHomesPortland.com
ModernHomesPortland.com

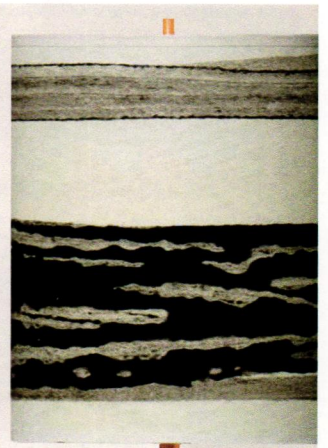
DWELL REALTY
Licensed OR & WA Broker

Hand Crafted
Lamps & Shades
MADE TO ORDER
THE
WAITING
IS
THE HARDEST
PART

New! Virtual Shade Fitting

Take the guesswork out of finding the perfect match for your vintage lamp. Send us a picture of your lamp, we'll send one back, fitted with a shade of your choice.

@ModilumiLighting
www.Modilumi.com



MID CENTURY MODERN
STYLED WALL ART



Modern
Retrograde
LLC

ETSY.COM/SHOP/MODERNRETROGRADE • CUSTOM DESIGNS
• 100% HANDMADE • FREE DOMESTIC SHIPPING • MADE IN THE USA



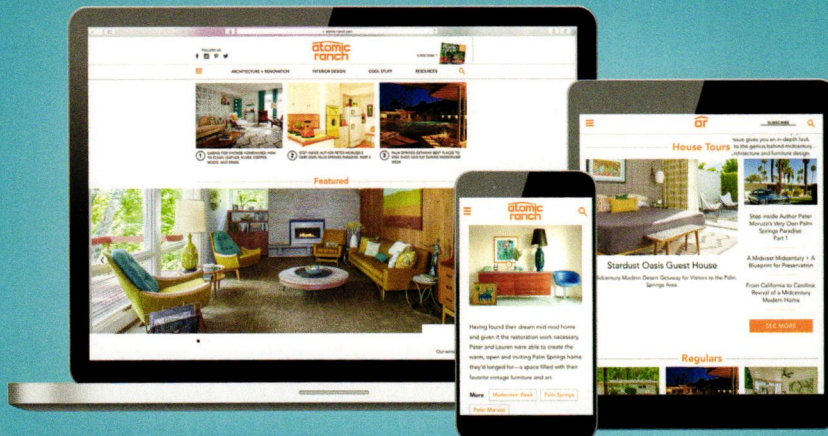
Official US distributor
since 1945

Replace
broken or stretched
Fagas Straps!

www.fagasstraps.com
info@fagasstraps.com 858.461.8069

DO YOU HAVE A **PASSION**
FOR **MIDCENTURY DESIGN**
... AND **WRITING**?

We're looking for well-versed mid mod
enthusiasts to write for our website!

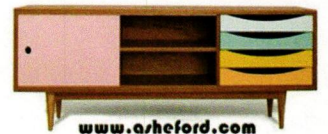


Visit www.atomic-ranch.com/contributors to learn more.

Would You Like To Be
A Mid-Century Modern
Antiques Dealer?

You Can:

- *Start your own Mid-Century Modern Antiques Business
- *Choose the hours you wish to work
- * Become a "Certified" Decorative Arts Appraiser
- *Complete an internationally recognized 12 Volume Course with Diploma & Appraisal Certification (PACC & USPAP)



www.asheford.com

For A FREE Course Prospectus
Booklet:

www.asheford.com

Email: asheford@mail.com

Toll free: 877-444-4508

Or write to:

Asheford Institute: 981 Harbor Blvd.

Ste. 3, Dept. 275ATR22 Destin, FL 32541

Hip Haven

RETROMODERN DECOR



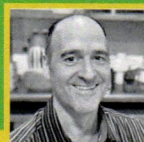
HIPHAVEN.COM

(512)462-4755
info@hiphaven.com

Your Chicago-Area Mid-Century Modern & Ranch Homes Specialist



MODERN
ILLINOIS
modernil.com



Lou Zucaro
lou@modernil.com • 312.907.4085
Baird & Warner
754 W. Northwest Highway, Barrington, IL 60010



	LAMINATE		CERAMIC TILE
	GARAGE DOOR KITS		FABRIC
	INTERIOR DOOR KITS		EXTERIOR DOOR KITS



MIDCENTURY MODERN VINYL WALL DECALS



24 COLORS • MATTE FINISH • REMOVABLE • CUSTOM SIZES

wallstargraphics.com Made in USA

Why renovate when you can restore?

Authentic mid-century restoration materials

Make it MID-CENTURY

makeitmidcentury.com



PHOTO: KEYSTONE FRANCE/GAMMA-KEYSTONE VIA GETTY IMAGES

Palm Springs Poolside

By Ian McMaster

With sunshine in the forecast for 350 days of the year and an average winter temperature in the mid-70s, it's no wonder Palm Springs has become one of the premier resort towns in the United States.

In addition, because of its nearly 40,000 swimming pools, Palm Springs has become synonymous with aquatic life.

The first pool in Palm Springs was built in 1909 by wealthy businesswoman Nellie Coffman with the express purpose of attracting guests to her new pit stop-turned-hotel, The Desert Inn.

By the 1930s, the unbeatable combination of the privacy of the Palm Springs desert, its consistent weather and the promise of lavish pool parties inevitably drew the rich and

famous (Frank Sinatra, Lucille Ball, Bob Hope and Cary Grant, to name just a few). In fact, from the 1940s to the 1950s, Palm Springs' population doubled ... and so did its pool count (from 900 to 2,000). The town's reliance on its pool culture to attract tourists also became more apparent. Hotels began to advertise the quality of their swimming facilities rather than the quality of their rooms.

Today, snowbirds still flock to Palm Springs during the winter months, and resorts attract millions of sun-lovers throughout the year.

The city recorded its hottest day ever in 2021: The thermometer hit 123 degrees (F). (However, that's nothing a quick dip in a pool can't help!)

KERF



kerfdesign.com
plywood cabinets for the modern home



Design finds for the modern den and more.
Lumens is modern like you.

 LUMENS[®]
LIGHT AND LIVING

Lumens.com • (855) 210-4486

ARDESIA LED LINEAR SUSPENSION by Hubbardton Forge • DIAGONAL POOL TABLE by RS Barcelona • NDEBELE AREA RUG by Gan Rugs