

# atomic

MID CENTURY MARVELS

# ranch

**Cool, Cool Summer**  
Mod style for  
inside and out

**Project House Austin**  
Full Reveal  
Tour the complete build





**GRUENE LAKE RANCH**



# GRUENE LAKE RANCH

## **THE CLASSIC A-FRAME**

**This timeless design is in demand worldwide by MidCentury outdoor enthusiasts. The trouble is, most are in remote areas and are in need of some TLC. Not at Gruene Lake Ranch.**

**This upscale Texas Hill Country ranch resort, located ideally between Austin & San Antonio, features Classic A-Frame cabins and three other iconic designs.**



 SCAN ME

# KE RANCH

## LIMITED OWNERSHIP OPPORTUNITIES

Check us out at [GrueneLakeRanch.com](http://GrueneLakeRanch.com) on how to own  
your A-Frame in the Texas Hill Country.

---

[GRUENELAKERANCH.COM](http://GRUENELAKERANCH.COM)

# Contents summer 2022

44



## FEATURES

### 28 Project House Austin: The Final Reveal

After an incredible year of creativity and collaboration, Project House Austin is complete!

### 44 Forever Home

Hard work, creative visions and clever strategies turn a remodeling nightmare into a Mid Century Modern dream.

### 54 Stylish Serendipity

Two friends find a second home and business opportunity in a turnkey Palm Springs getaway.

### 66 The Vibe

Warmer temperatures, longer days, backyard barbecues ... it's time for outdoor activities!

### 72 When a House Becomes a Home

The story of an architectural marvel, The Stahl House, is told by the family who lived there.

### 78 DIY Stock Tank Pool

Make a "splash" on a budget with this upcycled idea.

## SHOPPING

- 12 Cool Stuff
- 14 Period Picks
- 20 Modern Makers

## DEPARTMENTS

- 6 Editor's Letter
- 10 Web Update
- 18 Curb Appeal
- 22 Atomic Kitchens
- 87 Resources
- 90 Last Look

# 28



# 54



### cover

Cover photograph by Chase Daniel

Cover design by Gabby Oh



**ATOMIC RANCH** (ISSN 1547-3902) Issue 74, SUMMER 2022. *Atomic Ranch* is published six times per year (Spring, Summer, Renovation Guide, Fall, Winter, Design Issue) by Engaged Media LLC, 2220 Sedwick Road, Durham, NC 27713. Periodical postage paid at Durham, NC, and at additional mailing offices. POSTMASTER: Send address changes to Atomic Ranch c/o Engaged Media LLC, ColorArt, 101 Workman Ct., Eureka, MO 63025. Canadian Post: Publications Mail Agreement #40612608. Return undeliverable Canadian addresses to: PITNEY BOWES, INC., P.O. Box 26542, London, ON N6C 6B2, Canada. GST #R123073671. © 2022 by Engaged Media LLC. All rights reserved. Reproduction of any material from this issue in whole or in part is strictly prohibited.

# editor's letter



## HERE COMES THE SUN

**IN THE SUMMER, OUR HOMES "BREAK OUT OF THEIR SHELLS" AS MUCH AS WE DO**—and man, is it a fun and exciting process! Maybe I'm just a lover of ceremony and ritual, but the process of "summer-izing" my home feels like therapy.

Just as our wardrobe changes to celebrate the warmer weather, so do our living rooms and backyards: The patio cushions get dusted off, and our lemonade pitchers get ready for their season of hard work. And, while I eagerly await my summer travel plans to approach on the calendar, prepping and planning for summer parties and outdoor dinners are equally as exciting! It's a chance to show off the hard work of our home projects to our guests and use our homes to the fullest.

Speaking of showing off: I'm thrilled to share the final full reveal of the more-than-yearlong process of chronicling the Project House Austin with builder and architect Michael Wray of Mid Century Custom Homes and Christine Turknett of Breathe Design Studio. The picture above is from last October, when the *Atomic Ranch* team finally got to visit the site in person. I was three months along with my son (to think it'll only be one more month now until he's "earth-side!"). Skip to page 28 to take the tour and read all our thoughts. I can't wait to hear what you think.

This *Atomic Ranch* issue is chock-full of ideas that celebrate this exciting season. From nods to retro travel to products that help make our outdoors more enjoyable and homes in which summer living is in peak form, our aim is to inspire you with everything you need to make your home just as rewarding a destination as any travel plans.

Jackie Torres

Get connected!

Email: [editor@atomic-ranch.com](mailto:editor@atomic-ranch.com) • Online: [atomic-ranch.com](http://atomic-ranch.com) • [@theatomicranch](https://www.instagram.com/theatomicranch)

**atomic  
ranch**

### EDITORIAL

Content Director and Brand Leader: Jackie Torres  
Managing Editor: Amy Maclean  
Associate Editor: Ian McMaster  
Web Editor: Jolene Nolte

### DESIGN

Design Director: Gabby Oh

### CONTRIBUTORS

Kristin Dowling, Abigail Ehrd, Megan Housekeeper,  
Autumn Krause, Erin Lawrence, Robert Maurer,  
Meryl Schoenbaum, Devlin Smith

### CONTRIBUTING PHOTOGRAPHERS

Bret Gum, Chase Daniel, Megan Housekeeper, John Granen  
Photography, Robert Maurer, Schweitzer Creative,  
Holly Whittington

### ADVERTISING

Mike Giancola: Executive Vice President, Sales  
(380) 223-8197

[advertise@engaged.media](mailto:advertise@engaged.media)

Kris Christensen: Director of Digital Client Strategy

Suzy Bailey: Account Representative

Julie Hale: Account Representative

Leslie Huddleston: Account Representative

Christina Walker: Account Representative

Sebastian Tirkey: Advertising Traffic Coordinator

### OPERATIONS

Manish Kumar Mishra: Operations Manager

Surajpal Singh Bishi: Prepress Manager

Chandan Pandey: Production & Newsstand Circulation  
Manager

### EDITORIAL, PRODUCTION & SALES OFFICE

2220 Sedwick Road, Durham, NC 27713

[www.atomic-ranch.com](http://www.atomic-ranch.com)

(800) 764-6278, Fax (919) 516-0950

**ATOMIC RANCH** (ISSN 1547-3902) Issue 74 Summer 2022. *Atomic Ranch* is published 6 times per year (Spring, Summer, Renovation Guide, Fall, Winter, Design Issue) by Engaged Media LLC, 2220 Sedwick Road, Durham, NC 27713. Periodical postage paid at Durham, NC, and at additional mailing offices. **POSTMASTER:** Send address changes to *Atomic Ranch* c/o Engaged Media LLC, ColorArt, 101 Workman Ct., Eureka, MO 63025. Canadian Post: Publications Mail Agreement send #40612608. Return undeliverable Canadian addresses to: PITNEY BOWES, INC., P.O. Box 25542, London, ON N6C 6B2, Canada. GST #R55050365RT001.

© 2022 by Engaged Media LLC. All rights reserved. Reproduction of any material from this issue in whole or in part is strictly prohibited.

### CUSTOMER SERVICE

ENGAGED MEDIA LLC

2220 Sedwick Road

Durham, NC 27713

SUBSCRIPTIONS, ADDRESS CHANGES, RENEWALS,  
MISSING OR DAMAGED COPIES AND FOREIGN INQUIRIES  
BOOKS, MERCHANDISE AND REPRINTS  
(800) 764-6278

[subscriptions@engagedmediainc.com](mailto:subscriptions@engagedmediainc.com)  
[customerservice@engagedmediainc.com](mailto:customerservice@engagedmediainc.com)

### BACK ISSUES

[www.engagedlifestyle.com](http://www.engagedlifestyle.com)

LETTERS TO THE EDITOR, NEW PRODUCTS OR TO  
CONTRIBUTE A STORY OR PHOTO  
[editor@atomic-ranch.com](mailto:editor@atomic-ranch.com)

### SUBSCRIPTION RATES

\$29.95/1 year, \$52.95/2 years. Foreign, \$51.95 per year,  
\$96.95 per 2 years payable in U.S. funds.  
*Atomic Ranch* single copy price is \$7.99;  
Renovation Guide and Design Issue price is \$9.99.  
Please allow 6 to 8 weeks for new subscriptions to begin.

### SIXSAILS GROUP

Scott Hall: Chief Executive Officer

Prashant Upadhyaya: President

Carrie Rubalcaba: Human Resources

Nikiann Gray: General Counsel

Joanna Stone: Vice President of Media and Marketing

**ENGAGED<sup>®</sup>**  
MEDIA LLC

### ENGAGED MEDIA LLC

Emil Reister: Chief Executive Officer

Sonal Mehta: Chief Operating Officer

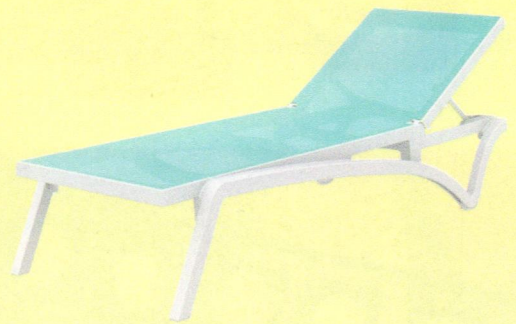
Mike Giancola: Executive Vice President, Sales

Erin Masercola: Content Director

Terry Rollman: Audience Development Director

This magazine is purchased by the buyer with the understanding that information presented is from various sources from which there can be no warranty or responsibility by Engaged Media LLC as to the legality, completeness or technical accuracy.

# Hello Summertime.



Discover unique and stylish outdoor furnishings  
all from the comfort of your home.

**H3K** HOME +  
DESIGN

[www.h3khome.com](http://www.h3khome.com)  
Use coupon code **Atomic10**  
and receive 10% off your online order.



Q: Are We Not Men?



Officially licensed by Devo, this ten color silk screen print, *Are We Not Men?*, is available exclusively from the Shag Store.

THE SHAG STORE • 745 N. PALM CANYON DRIVE, PALM SPRINGS • SHAGSTORE.COM





# GENERATION 4™

Folding Glass Walls by NanaWall

Drawing from four decades of innovation, NanaWall once again creates the most advanced family of folding glass walls.

**Clean Aesthetics:** The slimmest profiles available and minimal exposed hardware.

**Flexible Stacking:** Unique floating panel sets can stack either to the left or right.

**Barefoot Friendly:** Sill design offers weather resistance while maintaining a low-profile indoor-outdoor transition.

**Easy Operation:** Smoothest and easiest operation of any folding glass wall.

**Secure & Durable:** Air, water, and forced entry tested. Entry doors tested to 500,000 and folding panels to 20,000 open and close cycles.

Available in  
three different  
material choices:



ALUMINUM



WOOD



CLAD

Visit [NanaWall.com](http://NanaWall.com)  
800 873 5673  
[inquiries@nanawall.com](mailto:inquiries@nanawall.com)

**NanaWall**®  
Boundaries **Unbound**®

# webupdate

## We've got more summer reading for you!

Take the QR code to see these articles in full at [atomic-ranch.com](http://atomic-ranch.com).

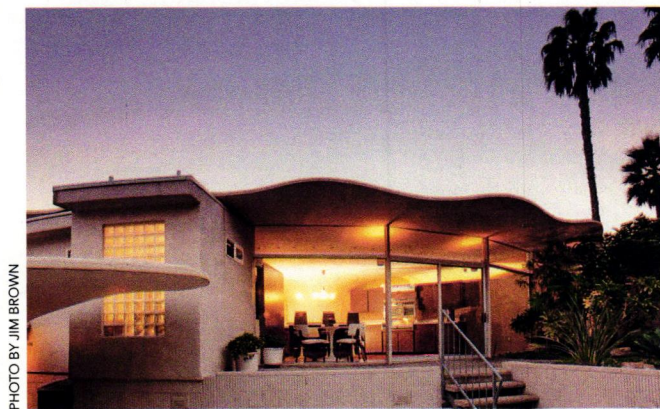


PHOTO BY JIM BROWN

### Roundabout: A Circular Home Breaks the Mold

A circular home called the Horizon House—designed by architect George Bissell in 1964—is a round gem in a neighborhood of boxy houses.



PHOTO BY GREYSHOCK & DUPONT PHOTOGRAPHY

### Our 10 Favorite Pools

Getting ready for summer means getting ready for pool season. As we look forward to catching more rays, here are some backyard inspirations—from California to North Carolina and from hotels from Miami to Waikiki.



PHOTO BY JIM BROWN

### The Best Summer Cocktails

Summer calls for cocktails, whether sipping them by the pool for a solo "happy hour" or for a party you're hosting. Serve in retro or retro-inspired barware for a fresh take on the cocktail—a mid-century staple! Here's a roundup of fresh summer cocktail recipes from around the Web.



PHOTO BY ISTOCK

### MCM Summer Bedding

Looking for a change this summer? From colored to neutral, we have eight MCM summer bedding options to brighten your bedroom.



Follow us online on **Facebook, Pinterest** and **Instagram** daily!

LOOK FOR THIS SYMBOL THROUGHOUT THE ISSUE TO SEE WHAT EXTRA CONTENT YOU'LL FIND ONLINE.



When it comes  
to windows,  
we lead the way.

You'll see more than **75 years of dedication**  
in every Ply Gem window and door.

- Backed by an industry leading warranty
- A wide selection of styles and configurations for any budget and project
- Interior and exterior design options to complement any design trend and architectural style
- Innovative energy-efficient glass package options
- Vertically integrated operations and supply chain ensure quality and efficiency. We manufacture our own vinyl profiles to control the quality and supply.

PLY GEM  
**#1 WINDOW  
MANUFACTURER  
IN NORTH AMERICA**

 **Ply Gem**<sup>®</sup>  
WINDOWS & DOORS

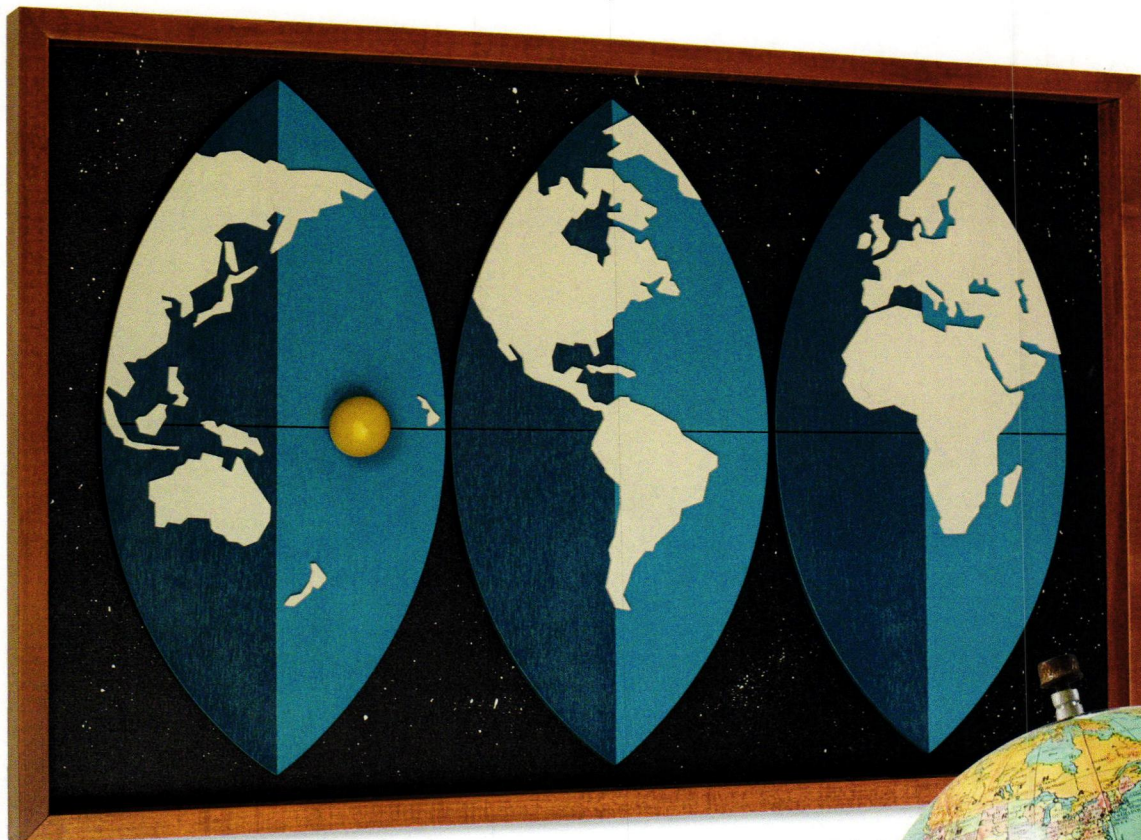
For more information on our products, visit [plygem.com/windows](https://plygem.com/windows)

# coolstuff

## Modern Escape

Travel ideas, accessories and  
décor to fulfill your wanderlust

Written by Ian McMaster



**JETSETTER** wall art,  
\$550; (562) 481-4036  
or [atomicpad.net](http://atomicpad.net)

**8-inch mid-century  
desktop globe**, \$216;  
(855) 549-9990 or  
[chairish.com](http://chairish.com)



**Hampton Clip M**, \$185; [garrettleight.com](http://garrettleight.com)

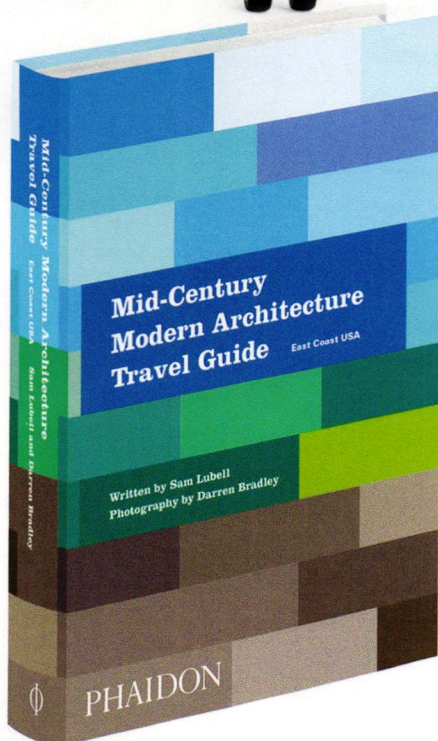




Mid Century Modern design  
roller suitcase, \$152.11;  
[etsy.com/shop/PrestigePlume](https://etsy.com/shop/PrestigePlume)



New Orleans art print, \$36;  
[redrobotcreative.com](https://redrobotcreative.com)



Mid-Century  
Modern  
Architecture  
Travel Guide:  
East Coast USA,  
\$35; [phaidon.com](https://phaidon.com)



INSTAX Mini 90.  
For pricing, visit  
[fujifilm.com](https://fujifilm.com).

# periodpicks



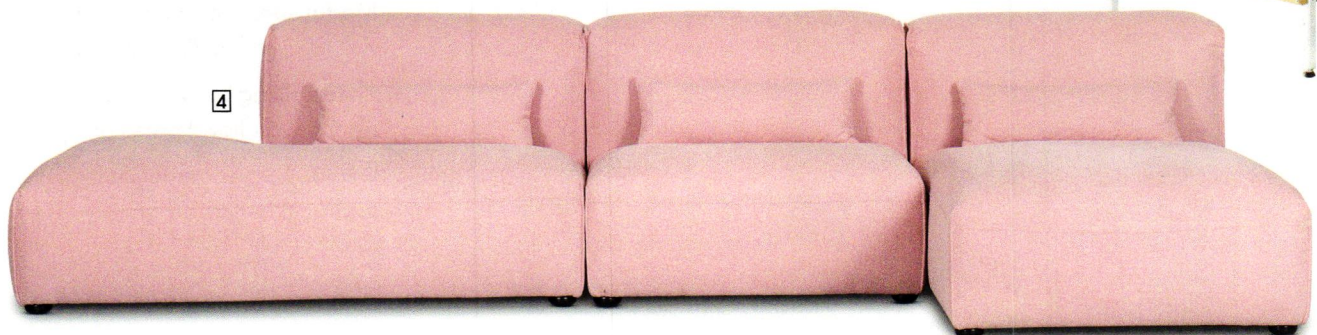
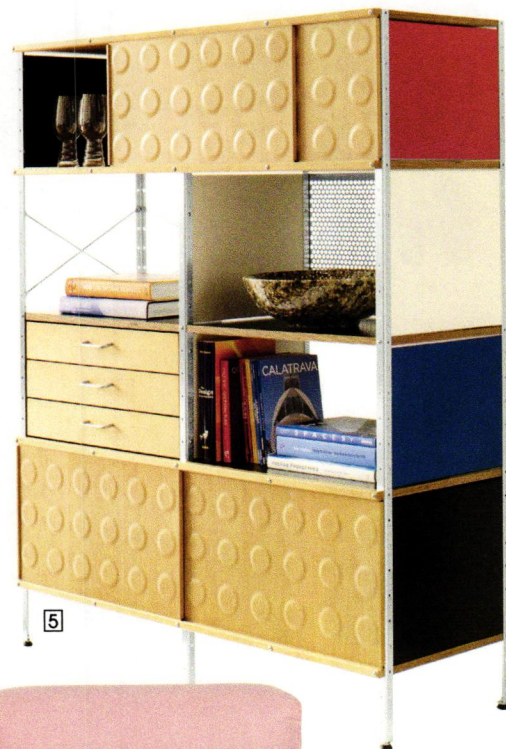
Written by Ian McMaster

## Mid-Century Modular

Uniquely customizable furniture that will meet your needs—now and in the future

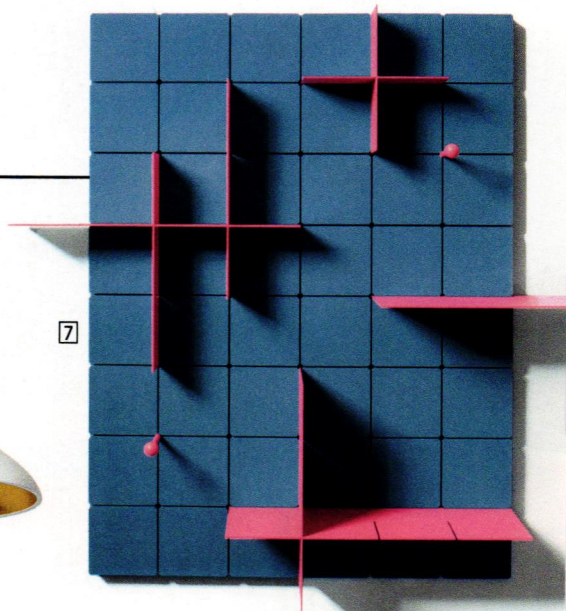


1. **Wilkes modular sofa.** For pricing, visit (888) 798-0202 or [hermanmiller.com](http://hermanmiller.com).
2. **ModernRail chandelier,** \$3,324; (877) 762-2323 or [circularlighting.com](http://circularlighting.com)
3. **Dixon modular storage unit,** \$7,581.70. For pricing, visit [darestudio.com](http://darestudio.com).
4. **Infina modular three-piece sofa,** \$1,799; (855) 310-1450 or [polyandbark.com](http://polyandbark.com)
5. **Eames storage unit,** \$3,995; (800) 851-4509 or [store.moma.org](http://store.moma.org)





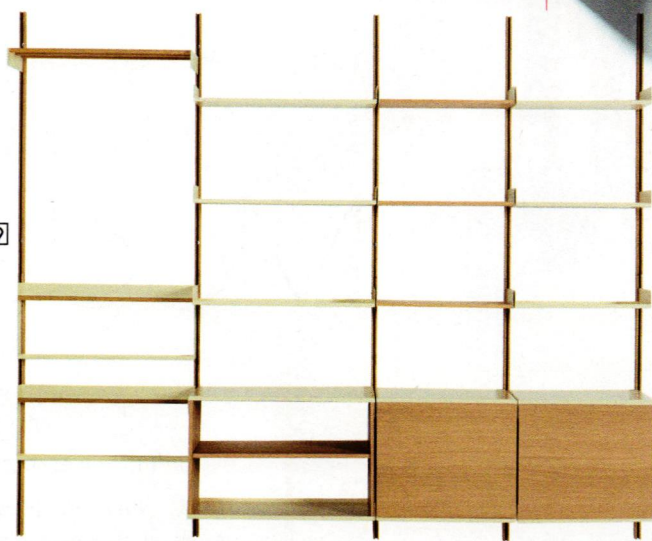
6



7



8



9



11



10

- 6. **Swell string 3 mixed modular linear suspension light**, \$752.25; (866) 842-6209 or [ylighting.com](http://ylighting.com)
- 7. **KUR!O modular shelving system**. For pricing, visit [von-morgen.de](http://von-morgen.de).
- 8. **Polvara modular bookshelf**. For pricing, visit (800) 605-1859 or [camodernhome.com](http://camodernhome.com).

- 9. **Modul shelving**. For pricing, visit (800) 944-2233 or [dwr.com](http://dwr.com).
- 10. **The shelving system**. For pricing, visit [floydhome.com](http://floydhome.com).
- 11. **Corvos corner modular sectional in carbon gray**, \$2,699; (888) 746-3455 or [article.com](http://article.com)

we make **mid-century dreams** come true.



Every day the **Mid-Century Homes Team** obsesses about finding the coolest mid-century homes in the nation's most livable city. Scenic **Boise, Idaho** is home to over 11,000 mid-century gems at attainable prices. With top-shelf customer service and a deep expertise, this Dream Team is ready to show off the best of Boise:

**MID-CENTURYHOMES.COM**



mid-century  
homes  
by Anthology



MODERN HOME FURNISHINGS  
KASALA  
CELEBRATING 35 YEARS



**NEW YORK SUITE SOFA** SERGIO BICEGO FOR SABA ITALIA  
DOWNTOWN SEATTLE | BELLEVUE DESIGN MARKET | KASALA.COM

info@kasala.com  
206.838.8000

# curb appeal



## A Mid-Century ‘Melody’

This exterior design hits all the right notes.

Written by **Erin Lawrence**  
Photographed by **John Granen**  
**Photography**  
Architect: **First Lamp Architecture**

### Architectural Terms You Should Know

**Soffit**—The underside of any construction element, whether interior or exterior, such as the underside of beams, eaves or overhangs.

**Fascia**—The vertical board or band under a roof edge or along a cornice that covers the gap or joint between the roof and the wall.

**Creating curb appeal is a lot like conducting an orchestra:** You need many elements, all finely tuned and working in harmony, to make truly beautiful music. The same concept applies to architecture and design.

“Everything really has to work together—the slope of the roof, the thickness of the trim,” explains Kevin Witt, project architect at First Lamp Architecture in Seattle, Washington. “Managing all these details is kind of like running a soundboard at a recording studio: You’re turning each of those little knobs, and then you just have to step back and take a look at what you have.”

### STARTING OVER

The elements of this renovated mid-century home in Seattle’s Madison Park neighborhood are definitely “in tune.” The windows were upgraded and adjusted to be more symmetrical. And when it came to the rooflines on both the house and the garage, First Lamp provided the opportunity to start

over. The garage was previously an open carport that was out of sync with the rest of the structure. The homeowners wanted the area closed in, and that provided the opportunity to rebuild and match the garage roofline to that of the main home.

The front door is a standout custom feature. Designed to be taller than an average door in order to align with the windows to the right, it’s decorated with slot windows and is made of solid alder.

Interestingly, First Lamp chose different, but complementary, woods for the façade. The soffits are cedar, while a long storage bench was built to the right of the door with an ipé wood top and cedar base. The bench’s sleek lines are carefully mid-century, yet it hides myriad children’s toys.

“Curb appeal is about keeping an eye on all the details,” Kevin points out. “It feels a lot like you’re drawing a portrait: If the eyebrow is a little off, or any feature isn’t quite aligned, the eye immediately recognizes it.”



**Breathe Design**  
Studio

Our interiors tell stories of belonging, comfort, and well-being.  
[breathedesigstudio.com](http://breathedesigstudio.com) | 512.994.0350 | [@breathedesign](https://www.instagram.com/breathedesign)

# modernmakers



**ABOVE, LEFT:** HOLLY'S MOST POPULAR DESIGN IS A COCKTAIL BOOMERANG SIGN. "IT INNATELY CAPTURES THE CULTURE OF THE TIME PERIOD, WHICH HAPPENS TO BE VERY SIMILAR TO OUR LIVES NOW, AFTER COVID. AFTER THE WAR, PEOPLE WERE 'REGROUPING' AND CENTERING THEIR PASTIME AROUND ENTERTAINING AND DRINKING AT HOME." IT'S HAPPENING AGAIN NOW, WITH MANY PEOPLE HAVING TAKEN THE LAST COUPLE OF YEARS TO CREATE THEIR OWN HOME OASIS AND COCKTAIL BAR.

**ABOVE, RIGHT:** EACH LAYER AND COLOR IS CUT USING A LASER AND METHODICALLY ASSEMBLED AND BONDED BY HAND AFTER THAT. "IT'S A VERY TEDIOUS, YET REWARDING, PROCESS," HOLLY EXPLAINS.

Written by **Autumn Krause**

Photographed by **Holly Whittington**

## Sign of the Times

**A funeral director-turned-designer creates one-of-a-kind Mid Century Modern-style signs for a clamoring clientele.**

**If you see house numbers** as that finishing touch for your exterior, check out Atomic Avocado Designs. This family-run company is based in Phoenix, Arizona. You can also find it—along with its array of curb appeal pieces and retro signs—online ([atomicavocadodesigns.com](http://atomicavocadodesigns.com) and via [etsy.com](https://www.etsy.com)). The company was founded, and is owned, by Holly Whittington, who spent 20 years in the funeral industry and made the drastic transition from funeral director to sign designer in 2019.

Curb appeal is all about creating an immediate, dynamic presence and reflecting the homeowner's style from the outside in.

"Our designs capture Mid Century Modern ideals. We do this by offering a variety of colors and customizable options," Holly explains.

"I initially had a vision of the type of curb appeal I wanted for my own home. I customized a mailbox for our front porch. It was both functional and aesthetically pleasing, emphasizing that mid-century 'vibe' we've always loved."

Holly's designs have quickly gained interest from others who share the same passion for MCM design. No matter the style of their homes (from vintage to new build), customers can have an MCM presence with an Atomic Avocado Designs creation.

"Everything we create is handcrafted, made to order and personalized, so you can be assured you're receiving a unique piece."





INVIGO SIT-STAND DESK

Made in America  
Made to Order  
Made to Last

**copeland**  
FURNITURE

COPELANDFURNITURE.COM



TALINA BEDROOM


# atomickitchens

## Return to Retro

Vintage styling and showcase tile break this formerly remodeled kitchen out of its shell.

Written by Meryl Schoenbaum

Photographed by Schweitzer Creative | Styled by Joel Fraley, Fraley + Company



**INTERIOR DESIGN INSPIRATION CAN COME FROM** colors, shapes, patterns and textures. In the case of this kitchen, the new style was inspired by tile.

Homeowners Jason and Megan Coleman are also the owners of Clayhaus Tile ([clayhaustile.com](http://clayhaustile.com)) and wanted the kitchen of their 1956 classic ranch in Portland, Oregon, to reflect their attraction to unique tiles. They hired Fraley + Company ([fraleycompany.com](http://fraleycompany.com)) to design their dream kitchen.



"They wanted to use their own handmade tiles for the backsplash," says Joel Fraley, owner/designer of Fraley + Company. "The main request was an integrated seating nook, and the kitchen window is the perfect sunny corner for coffee or breakfast."

But before the new elements could be added to the room, there were some previous "remuddles" that needed to be dealt with.

"The kitchen had been unfortunately remodeled sometime in the 1980s with builder-grade cabinets and vinyl flooring," Joel says.

However, the overall layout of the kitchen stayed relatively the same.

"We added more storage and improved the counter space. Those are the two biggest requests we get for kitchen remodels. We moved the range and fridge a bit to open up some counter space. The banquette is a classic period touch that tied the space together. Previously, that corner was a hodgepodge of furniture. We specified a classic 'dog-bone' laminate countertop, metal countertop edging and coordinating arch pulls. We also specified a classic starburst pattern for the banquette upholstery in colors that coordinate with the tile, as well as a Saarinen-inspired tulip table. The Marmoleum flooring is a sustainable option for a classic sheet-flooring look. The 'cherry on top' is the Big Chill fridge—it's the period-perfect selection."

**OPPOSITE:** THE VIEW TOWARD THE BANQUETTE BECKONS GUESTS TO HAVE A SEAT NEAR THE WINDOWS.

**ABOVE, LEFT:** "THE FRIDGE IS THE STAR OF THE SHOW," JOEL FRALEY SAYS. "WE DISCUSSED SPECIFYING A BIG CHILL COLORED RANGE, BUT I'M GLAD WE DIDN'T. I REALLY LOVE THE WHITE RANGE. THIS IS A SMALL KITCHEN, AND I THINK TWO COLORED APPLIANCES WOULD HAVE DISTRACTED FROM THE TILE."

**ABOVE, RIGHT:** "THE SINK WALL IS THE 'WORKHORSE' OF THE KITCHEN," FRALEY SAYS. "I'M GLAD WE WENT WITH THE PANELED DISHWASHER—THERE'S NO STAINLESS STEEL AT ALL IN THE KITCHEN. THIS ALSO SHOWS MY FAVORITE DETAIL: THE INTERSECTION BETWEEN BENCH AND CABINET."

**BELOW:** THE HANDMADE BACKSPLASH TILE FROM CLAYHAUS SPICES UP THE KITCHEN.



## MID-CENTURY KITCHEN MIX

Here's some advice from designer Joel Fraley for designing an "atomic" kitchen:

- It's easy to overdo it. Pick one or two "killer" details to focus on and use the rest of your design to supplement the primary ideas.
- Don't be afraid of color.
- Function is beautiful. Make sure everything works properly.
- Spend money on the things that are important to you and/or the things you use every day. Be willing to compromise on other decisions.



TOP: "THIS IS MY FAVORITE SHOT. I LOVE THAT GLIMPSE OF THE DINING ROOM THROUGH THE KITCHEN DOOR," JOEL FRALEY SAYS. THE VIEW SHOWCASES THE CLASSIC MID-CENTURY DETAILS.

### MAKING A SPLASH

"My favorite memory of this project is spending an evening at the Clayhaus shop with a room full of tile samples—every glaze and shape that it makes at my fingertips," Joel says. "The main inspiration for the project came from that night. We settled on a stretch hex shape and picked the color blend based on the color of the fridge. The rest of the kitchen is a fairly subtle palette to highlight the handmade tile."

Just as the backsplash was inspired by handmade tiles, the kitchen's color palette was inspired by a room element.

"It all started with the Jadite Green refrigerator," Joel explains. "Once we agreed on that color, it was straight to the tile samples to come up with a blend that would work with it. We selected a four-color blend with two shades of green, along with some blue and some white to calm things down a bit. It's so easy to overdo it! The next selections were the Marmoleum flooring, the pendant over the table and the upholstery for the banquette. Everything was chosen around the tile once we selected the blend. The paint colors came last—a soft seafoam green to keep the space nice and cool. The cabinets and countertops stayed simple to highlight the tile."

### ATOMIC LIGHTING

Joel also selected period-appropriate lighting fixtures for the space.

"The surface-mount ceiling light is a simple drum, and the pendant over the banquette table adds a pop of teal to the room without being too overbearing. The sink pendant is a nice, little chrome space-age pod."

While the entire kitchen is a mid-century confection, the backsplash tile is the "eye candy."

"The tile is my favorite aspect of the project," Joel says. "We love specifying Clayhaus, because it's local, and we're also good friends. So, it was an honor for us to be asked to design their own kitchen, and I wanted to get it right!"



ABOVE: THE BANQUETTE'S UPHOLSTERED BENCH IS THE PERFECT DETAIL FOR A WARM AND COZY MID-CENTURY KITCHEN.

SEE SOURCES, PAGE 87.





**modernous**  
INTERIOR DESIGN

modern + midcentury specialists  
modernous.com  
206.430.1966

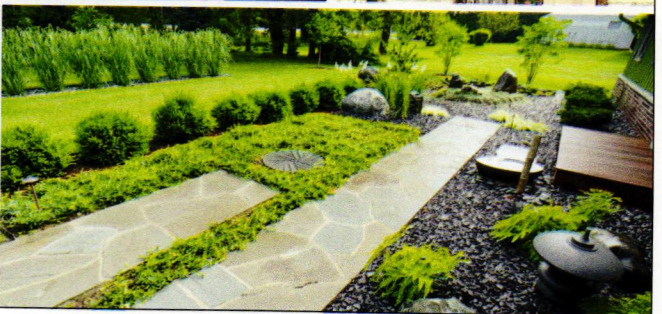
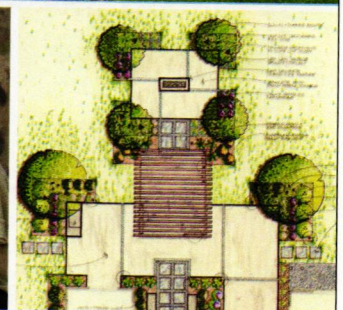
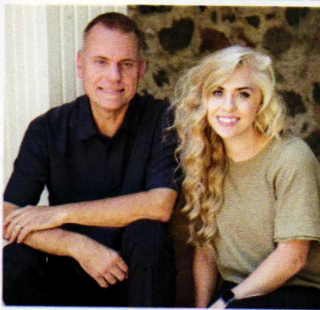
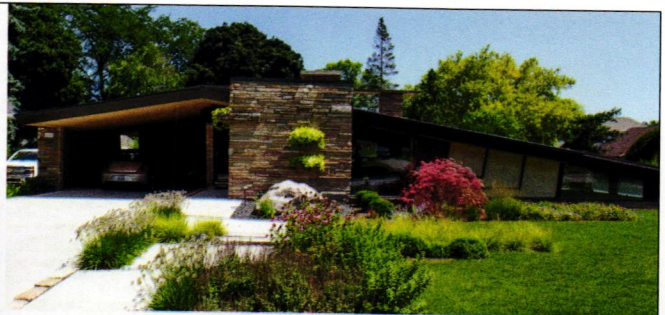


**ginkgo leaf studio**

LANDSCAPE DESIGN



15  
YEARS OF SUCCESS  
2007 | 2022



Providing landscape design throughout the United States  
MILWAUKEE WI • BOZEMAN MT

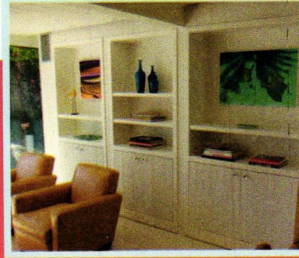
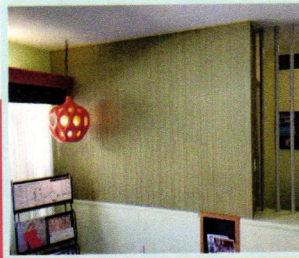


[ginkgoleafstudio.net](http://ginkgoleafstudio.net)  
262.376.5050



A Division of Eichler Siding

## The Cool Combed Panel Back from the Mid-Century— Weldtex!



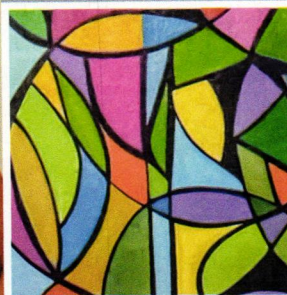
### Accent Walls-Siding-Wainscot-Ceiling Tiles

Featured in the new build, Starlight Village, in Austin, TX, and matched to original Weldtex panels in the Orbit In and the Kirk Douglas Estate in Palm Springs, CA, to name just a few. Ask us how to get the look in your mid-century modern home!

- ✓ 3/8" Pine plywood tiles create classic checker board pattern, or sheet for accent walls and wainscot.
- ✓ Plywood works great for paint grade or clear coat.
- ✓ T & G Stain Grade 3/4" Hardwood Wall Panel Wainscot/ Accent Walls
- ✓ Customers tell us the plywood tiles and panels are excellent matches to their pre-existing walls and ceilings best choice for paint or clear coat.
- ✓ Hardwood (cherry, maple, oak) tongue and groove 5/16"x3/4" wall panel for excellent staining and elegance.

See our website [www.vintageplywood.com](http://www.vintageplywood.com) for details and pictures.

[info@vintageplywood.com](mailto:info@vintageplywood.com) | [vintageplywood.com](http://vintageplywood.com) | 415.883.5300



My paintings are candles of light that **speak an enthusiastic inner buoyancy and progressive optimism.**

I love to walk up to a blank canvas and experience the joy in asking it to release its own energy and personality.

From the vast language of colors, I give it freedom, form and balance...to let it dance and sing its song. I create commission works of art in a variety of sizes and work with gallery representation".

Carol

[carolestes.com](http://carolestes.com)





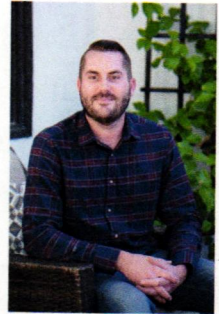
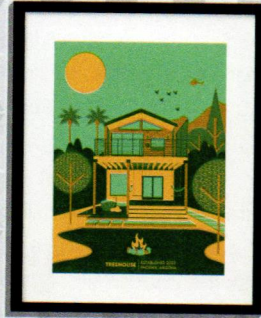
post & beam

With a keen eye for design, and a mid-century palette, Aaron Stouffer has been illustrating architectural icons since 2014.

Make your home iconic.

Limited Series Artworks  
Customized Home Illustrations

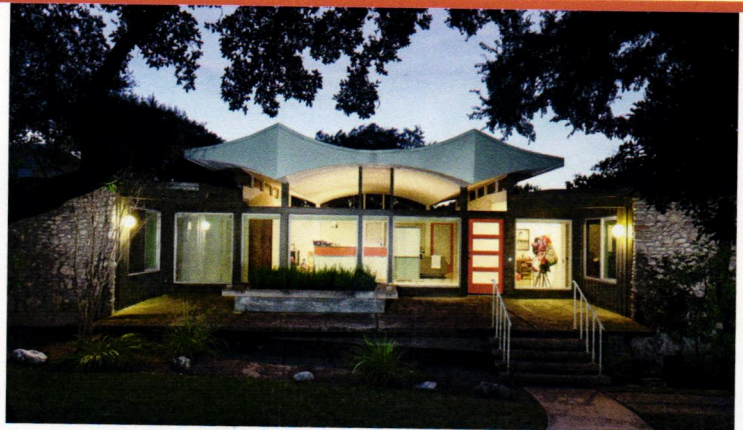
Postandbeamaz.com  
Postandbeamaz@gmail.com



| Special Advertising Section |

## A. D. STENGER

Arthur Dallas Stenger better known as **A.D. Stenger** is perhaps one of Austin's better known mid century modern residential architects, an impressive feat for someone that dropped out of UT prior to graduating.



A.D. Stenger was never one to follow the traditional path. He was innovative, had strong opinions, and wasn't afraid to do things his own way. In 1950 he passed his architectural exams just prior to graduating from the University of Texas School of Architecture and went straight to work. He was a prolific home builder, completing over 100 homes in the Austin area in a 20 year span. You'll find the highest concentration of Stenger homes in the Zilker and Rollingwood neighborhoods. Stenger picked these areas because they were originally outside of city limits, giving him fewer restrictions as to what he was able to build. Visit [creedefitch.com/architects](http://creedefitch.com/architects) for more information on A.D. Stenger and other Austin based modern and mid century modern architects.



PHOTOGRAPHY BY ANDREA CALO | STORY BY CREEDE FITCH, AN AUSTIN BASED REALTOR

# Project House Austin: The Final Reveal

A complete look at how the mid-century elements in this new build come together to create a nod to the past—plus new, never-before-seen spaces.

Written by **Kristin Dowding**  
Photographed by **Chase Daniel**  
Styled by **Whitney Smelser**

**After an incredible year of creativity and collaboration,** Project House: Austin is complete!

Working together, designer Christine Turknott of Breathe Design Studio, builder Michael Wray, owner and founder of MidCentury Custom Homes, LLC, along with our *Atomic Ranch* team and sponsors, built and furnished a new mid-century-inspired home in Austin, Texas.

“Having been in countless Mid Century Modern homes across the country’s biggest mod hotspots, there’s this unique air that fills those old homes—the floorplan, the space planning, the way you’re meant to move through the house,” says Jackie Torres, editor of *Atomic Ranch*. “Michael and Christine captured that, managing to manipulate the space and scale to bring in that intimate and special feeling of an authentic mid-century space.”

ORIGINAL PROJECT HOUSE RENDERING







**ABOVE:** THE MUDROOM COMBINES MODERN DESIGN WITH FUNCTIONAL STORAGE. CHRISTINE COLOR-BLOCKED THE BENCH AREA WITH THE SAME COLOR AS SHE USED FOR THE BUTLER'S PANTRY CABINETS AND BROUGHT IN EICHLER SIDING FOR A TOUCH OF WARMTH AND TEXTURE. THE LARGE, MINT STORAGE CABINET LIGHTENS THE SPACE. BRASS HARDWARE FROM EMTEK POPS WITH A CHIC, BUT UTILITARIAN, FEEL.

## AUTHENTIC TOUCHES

Michael studied Palm Springs architecture to help inspire the design of this project.

"Anshen and Allen and Cliff May were the most influential on this new build," he says.

He pulled from their design ideas to create this post-and-beam structure that features more than 70 windows and timber membranes. The living room, for example, has an expansive wall of windows that look out onto the pool.

"In most homes, you get a 'vertical portrait' look, but in this house, you get a landscape look with a wide view," Michael points out.

The project house sponsors played a huge role in giving the home a mid-century feel: "The sponsors were really great to choose from," Christine says. "I'm so grateful for all the beautiful products they offered us. It forced me to push my boundaries and allowed me to include things I never would have thought to."





ABOVE, RIGHT: CHOOSING A THREE-DIMENSIONAL, FLOOR-TO-CEILING MATTE-BLUE TILE, CHRISTINE MADE THE FIREPLACE THE FOCAL POINT OF THE MAIN LIVING ROOM. "ORIGINALLY, WE WEREN'T GOING TO EXTEND THE TILE TO THE WHOLE WALL. IT WAS GOING TO BE A RECTANGLE TO THE CEILING, BUT I DIDN'T WANT TO HAVE DRYWALL." IN DOING SO, AN ARROW WAS INADVERTENTLY CREATED; IT DRAWS YOUR EYE UP TO THE EICHLER SIDING PANELING AND BLACK BEAMS ON THE CEILING. "IT WAS A GREAT WAY TO EMPHASIZE THE CEILING HEIGHT," CHRISTINE POINTS OUT. THE LUMENS CHANDELIER IS A CHARMING UPDATE ON A CLASSIC SPUTNIK STYLE.



**BELOW:** CHRISTINE BALANCED THE CASITA'S WHITE KITCHEN WITH ROBIN'S-EGG BLUE APPLIANCES FROM ELMIRA STOVE WORKS. "THE CLASSIC, WHITE SLAB CABINETS ALLOW THE APPLIANCES TO BE THE STARS OF THE SHOW," MICHAEL POINTS OUT. THEIR RETRO BLUE COLOR AND STYLE COMPLEMENT THE CUSTOM BACKSPASH TILES. KARDIEL FURNITURE IN THE LIVING SPACE IS PERFECTLY SCALED AND IS BRIGHT AND FUN, WITH INCREDIBLE DETAILS THAT POP WITHOUT OVERWHELMING THE SPACE.







**OPPOSITE, TOP:** THE CLIFF MAY RANCHOS INSPIRED MICHAEL'S STRUCTURAL DESIGN FOR THE CASITA. THE ROOF PROVIDES AN OVERHANG FOR THE FRONT PATIO VIA A NATURAL PINE TONGUE-AND-GROOVE CEILING. "I LOVE THE CONTRAST BETWEEN THE BLACK AND NATURAL PINE," MICHAEL SAYS. "IT GIVES IT A DISTINCTIVE LOOK."

**TOP, LEFT:** THE BUTLER'S PANTRY IN THE MAIN HOUSE IS AN EXAMPLE OF WHERE CHRISTINE WENT BOLD WITH HER USE OF COLOR. THE SPACE HAS MULTIPLE FUNCTIONS, INCLUDING STORAGE, A DESK/STUDY AREA AND A BAR AREA. "I WANTED IT TO BE MOODY IN THERE, BUT IT'S A PRETTY BIG SPACE, SO I DIDN'T WANT IT TO BE ALL BLUE CABINETS," CHRISTINE EXPLAINS. BOLD HARDWARE FROM EMTEK ADDS A HANDSOME DETAIL. THE WHITE COUNTERTOPS FROM ARCHITECTURAL SURFACES BREAK UP THE BLUE FOR A NEUTRAL SURFACE TO WORK ON.

**TOP, RIGHT:** CHRISTINE INCORPORATED A POP OF MINT IN THE BAR AREA TO GIVE THE MAIN HOUSE SOME BRIGHT AND AIRY SPACES, WHILE THE OPEN SHELVES DISPLAY FUNCTIONAL DÉCOR PIECES THAT ADD COLOR AND TEXTURE. THE ARCHITECTURAL SURFACES COUNTERTOPS ARE THE SAME FINISH AS IS USED FOR THE REST OF THE KITCHEN COUNTERTOPS. THE BATHROOM NEXT TO IT HAS A BOLD DESIGN, WITH BEIGE-AND-YELLOW TILES ON BOTH THE FLOOR AND THE WALLS. THE TILES ALL HAVE THE SAME SHAPE, BUT THEY WERE INSTALLED TO LOOK LIKE TWO DIFFERENT PATTERNS.



## A UNIQUE VIBE

The home combines retro features with Bauhaus movement and Scandinavian touches, so it isn't a typical MCM home.

Although the casita paid homage to a classic mid-century color palette and period furnishings, Christine wanted to switch it up in the main house and cater to more-modern preferences.

"One of my favorite qualities of our design that I can't help but love is to make spaces that are calming," she says. "So, that drove a lot of the color palette, textures and furniture choices. It 'softened up' MCM, and that's not typically what people associate with that period. But comfort is what people want in a home."

The exterior has its distinctive features as well: "Most of the time, you put a house on top of a hill, but we created multiple elevation drops so the house sets into the hill," Michael explains. "It makes it unassuming and gives it a sophisticated elegance. The site is also unique, with its 180-degree views of Bee Creek Canyon on Lake Travis. When you get a horizon line you can mimic with the home, itself, you can create a mid-century-inspired home that's really special."

THE KARDIEL FURNITURE ALLOWED CHRISTINE TO MIX NEUTRAL PIECES WITH COLORFUL ACCENTS. "I WANTED TO ADD COLOR IN THE MAIN HOUSE THAT WASN'T MCM-INSPIRED. I LOVE BLUES AND PINKS, BUT THE COFFEE TABLE IS MY FAVORITE PIECE. WHILE IT REMINDS ME OF A RETRO PIECE, I CHOSE AN OAK FINISH RATHER THAN WALNUT OR TEAK." THE EXPANSIVE PLY GEM WINDOWS LOOK OUT ONTO THE POOL AREA AND PROVIDE A BEAUTIFUL AND NATURAL OUTDOOR BACKDROP. THE CHIC FLOR RUG OFFERS A LARGE-SCALE PATTERN THAT'S PERFECT FOR THIS OPEN-PLAN SPACE.



**RIGHT:** THE CASITA WAS DESIGNED TO FUNCTION AS A GUEST HOUSE OR A HOME OFFICE. THE NAVY BLUE-AND-MINT WALLPAPER FROM ABNORMALS ANONYMOUS SETS THE TONE FOR A MORE RELAXING ENVIRONMENT. IN ADDITION, IT WORKS WELL WITH THE DARK-BLUE RUG FROM FLOR. "WE WANTED TO GO A BIT DARKER IN THE BEDROOM," CHRISTINE EXPLAINS. "IT HAS REALLY NICE LIGHTING, SO IT WOULD BE A GREAT PLACE TO WORK." THE MATTHEWS FAN IS A SLEEK CHOICE FOR A VERY NECESSARY ITEM DURING TEXAS SUMMERS.



## HOW TO CHOOSE THE RIGHT WINDOW MATERIALS FOR YOUR HOME

Our Project House Austin window sponsor, Ply Gem, offers vinyl, aluminum-clad wood, aluminum and wood composite options.

"All our windows are made to order and can be configured to meet the specific energy performance requirements for all climate zones and local building requirements," says Ply Gem's Vice President of Marketing Steve Hoffins.

So, how do you choose the right window material for your home? Here are some tips to help you narrow down the perfect fit:

- 1. CLIMATE.** Choosing a material that can withstand the climate you live in is the first thing to take into consideration. "In the north, where a project might require wood, aluminum-clad windows are a great choice. These windows offer the traditional look many homeowners are looking for while offering the durability and performance of a more modern vinyl window," says Hoffins. "Aluminum windows are still popular in some southern climates, where thermal performance is less of an issue, and they can also offer a good, low-cost alternative. And vinyl windows will help lower heating and cooling costs while keeping your home comfortable in any climate."
- 2. MAINTENANCE.** Next, consider how much time and money you're willing to put into maintaining your windows. If you're looking for something low-maintenance, Ply Gem's vinyl windows are your best option. "Premium vinyl resists deterioration, decay and damaging insect infestation," Hoffins points out.
- 3. DURABILITY.** All of Ply Gem's window materials are durable and long-lasting. "In addition to impact and wind resistance, today's high-quality window materials are designed to resist damage from harsh weather, moisture and insects," Hoffins explains.
- 4. AESTHETIC.** Of course, you want to make sure that the material you choose will fit with the aesthetic of your Mid Century Modern home. Thankfully, all of Ply Gem's window materials can be used to achieve an MCM look. As Hoffins points out, "Our aluminum 4700 windows are featured in this project home. They provide narrow sight lines and are available in dark, contrasting colors such as bronze and black to achieve that authentic MCM style. Our 1500 Series vinyl product line (in the East) and our 200 Pro Series vinyl product line (in the West) both feature dark bronze and black exterior colors to achieve the trending, bold, contrasting exterior look, but they also have neutral white interiors that are typically desired on the interior."
- 5. PRICE.** Lastly, take your budget into account. However, make sure you're prioritizing the function and energy efficiency of your windows before their cost.

BECAUSE THE OFFICE CONSISTS MOSTLY OF WOOD ACCENTS AND WHITE WALLS, THE DARK-NAVY FLOR RUG HELPS GROUND THE SPACE. KEY PIECES, SUCH AS THE KARDIEL DESK AND BOOKSHELF, KEEP THE SPACE ORGANIZED AND GIVE IT AN MCM FEEL. "I WANTED TO KEEP IT SIMPLE AND NOT OVERPACK THE ROOM," CHRISTINE SAYS. "BECAUSE AUSTIN IS A LIVE-MUSIC CAPITAL, I WANTED IT TO BE A 'FUNKY' SPACE THAT PLAYS OFF OF THAT CASUAL ROCK MUSIC, VINTAGE VIBE." POCKET DOORS FROM WOODGRAIN DON AN ELEGANT AND STRIKING MODERN DESIGN THAT MAKES A MEMORABLE IMPACT IN THIS ROOM.



TOP, RIGHT: BECAUSE THE MAIN LIVING SPACE DOESN'T HAVE A TELEVISION, THE DESIGN TEAM MADE THE MEDIA ROOM THE GO-TO HANGOUT SPOT. "IT'S A MOVIE ROOM FOR THE KIDS TO PLAY IN," SAYS CHRISTINE.

"I DESIGNED IT TO BE FUN AND RETRO BUT STILL CLEAN AND BRIGHT." THE CEILING FAN FROM MATTHEWS FAN COMPANY ADDS WARM WOOD TO THE SPACE TO BALANCE OUT THE COLORFUL ACCENTS. THE FURNITURE FROM VALYOU IS COZY AND CHIC AND HAS ALL THE RIGHT MCM HALLMARKS. YET, IT'S DURABLE FOR A HEAVY-USE ROOM. BLACK-AND-WHITE ARTWORK FROM MARMONT HILL VIA HOUZZ ADDS AN ENERGETIC TOUCH.



BELOW, RIGHT: THE MINT-COLORED WALLPAPER FROM ABNORMALS ANONYMOUS INSPIRED THE WHIMSICAL LOOK OF THE CHILDREN'S ROOM. "I LOVED THE IDEA THAT IT COULD BE GENDER-NEUTRAL FOR PEOPLE WHO WANT THEIR KIDS TO BE ABLE TO GROW INTO THE SPACE," CHRISTINE SAYS. THE CHILDREN'S FURNITURE BY NICO & YEYE MAKES AN IMPRESSION. HANDMADE AND PERFECTLY MODERN, EACH PIECE IS VIBRANT AND FUNCTIONAL.



## KEEP IT COHESIVE

With such a large home and a desire to bring new ideas to light with each space, it was a challenge to keep the theme cohesive.

"All the rooms have different identities to make them memorable," Christine points out. "But with so many different rooms that we wanted to make unique, I still wanted continuity with color, texture, pattern, wood tone and silhouettes and to make sure everything was balanced throughout the spaces."



**RIGHT:** THE ORIGINAL DESIGNS FOR THE LAUNDRY ROOM INCLUDED WHITE WALLS, BUT CHRISTINE DECIDED THIS SPACE NEEDED A BIGGER POP OF TEAL TO COMPLEMENT THE FLOOR TILE. "LAUNDRY ROOMS ARE TYPICALLY NOT PEOPLE'S FAVORITE SPACE IN THE HOME. HOWEVER, BECAUSE YOU HAVE TO SPEND TIME IN THERE, YOU WANT IT TO HAVE PERSONALITY AND HAVE IT CHEER YOU UP."



**ABOVE:** TO CREATE A TWIST ON A RETRO LOOK, CHRISTINE USED VINTAGE-INSPIRED BLUE-AND-WHITE TILES FROM B&W TILE IN THE CASITA BATHROOM. "IN AUTHENTIC MCM HOMES, YOU SEE TILE UP TO A CERTAIN POINT ON A WALL AND THEN WHITE ABOVE IT," CHRISTINE POINTS OUT. "I WANTED TO KEEP THAT SAME COLOR-BLOCKING AND DO IT WITH FLOOR-TO-CEILING TILES."





**TOP:** FLOATING CABINETS COMPRISE A UNIQUE AND CONTEMPORARY FEATURE IN THE PRIMARY BATHROOM. "MOST BATHROOMS IN RETRO HOMES AREN'T THAT BIG, SO WE HAD AN OPPORTUNITY TO RUN WITH IT AND SEE WHAT WOULD HAPPEN," CHRISTINE EXPLAINS. THE DARK STAIN WARMS UP THE SPACE, AND THE IN-MOUNT FAUCETS GIVE IT A CUSTOM LOOK. GRAY-AND-WHITE TILES ADD PATTERN WITHOUT GETTING EXCESSIVE WITH COLOR. "I WANTED IT TO FEEL LIKE AN EXTENSION OF THE BEDROOM," CHRISTINE SAYS. EDGE PULL HARDWARE FROM EMTEK KEEPS THE LOOK SLEEK AND ELEGANT.

**RIGHT:** THE SOAKING TUB AND SHOWER PORTION OF THE PRIMARY BATHROOM IS SPACIOUS, WITH WALL-TO-CEILING GRAY KIT-KAT TILE THAT CONTRASTS THE RETRO, PALE-JADE PENNY TILE FLOORING. THE MINIMALIST LOOK IS SOOTHING, BUT IT STILL HAS TEXTURAL INTEREST. "IT'S THE MOST RELAXING SPACE IN THE WHOLE HOUSE," SAYS CHRISTINE. "WE WANTED TO MAKE IT LIKE A SPA."

The casita is where Christine really played up the retro theme: She chose common MCM colors such as yellow, robin's egg blue and orange. The furnishings and décor all pay homage to mid-century style. However, in the main house, she took creative liberties and mixed in Scandinavian influences with modern appeal and included colors such as pink and blue. Nevertheless, every space was rooted in the love of authentic retro design, with clean lines, classic motifs and timeless architectural features. "I incorporated well-known motifs but wanted to rethink them in the context of a new build," she explains.





ABOVE LEFT AND TOP RIGHT: THE CHILDREN'S BATHROOM BALANCES SOPHISTICATED, DARK CABINETS WITH A FUN, COLORFUL TILE PATTERN. "WE PULLED THE SAME WOOD COLORS FROM THE PRIMARY BATHROOM," SAYS CHRISTINE. "THE TILE HAS A COOL, MCM MOTIF TO KEEP IT FUN AND LIGHT."

## EXPANDING MCM

One of the goals of Project House Austin was to bring mid-century design to people in a new way.

"Some people might see it as a contradiction to have a new MCM home, but there's value in starting conversations and experimenting with new ideas," says Christine. "I wanted it to be an experience for people, and I didn't play it safe."

Another goal was to bring MCM design to more people: "Having new homes built in our beloved Mid Century Modern way gives more people an entry point," Jackie Torres explains. "It's access for those who don't live in areas where they can find an authentic one or where their needs and/or budget just don't fit into a historic home. As advocates of modernist style, we support and encourage new builds designed in the vein and spirit of MCM as ways of preserving and celebrating MCM history." 🌿

SEE SOURCES, PAGE 87.







**ABOVE:** PRIMARY BEDROOMS OFFER AN OPPORTUNITY TO CREATE A RELAXING SANCTUARY THAT WILL HELP RELIEVE DAILY STRESSES. "IT CAN EXIST IN A VACUUM ON A CERTAIN LEVEL BECAUSE IT'S A PRIVATE SPACE, SO THIS ROOM IS MORE SUBTLE," CHRISTINE SAYS. "I WANTED IT CLASSIC, CLEAN AND TIMELESS SO IT WOULDN'T COMPETE WITH THE VIEWS." THE PENDANT LIGHTS FROM LUMENS OFFER A DRAMATIC EFFECT HANGING FROM THE HIGH CEILING, AND THEY ALSO BRING IN A BIT OF COLOR. THE FLAG HALYARD-INSPIRED CHAIR FROM KARDIEL OFFERS TONS OF GREAT TEXTURE. THE GOLDEN FLOR RUG LIGHTENS THE VIBE WITH ITS SUBTLE GEOMETRIC PATTERN AND GLOWING COLOR.

**OPPOSITE, BOTTOM:** THE GUEST BATHROOM TILE IS A PLAY ON TRADITIONAL SUBWAY TILE. "THE EDGES ARE ROUNDED, AND WE WERE ABLE TO INSTALL THEM IN AN INTERESTING CONFIGURATION THAT ALLOWS THE SHAPE TO BE THE FOCAL POINT," CHRISTINE POINTS OUT. THE DARK VANITY PLAYS OFF THE DARK-GRAY FLECKS IN THE TERRAZZO SHOWER FLOORING AND EMULATES THE MOODINESS OF THE GUEST ROOM.

## PROJECT HOUSE AUSTIN SPONSORS

Thank you to these brands, all of which helped deliver quality and authenticity to our new Mid Century Modern build:



ELMIRA  
STOVE WORKS

abnormals  
ANONYMOUS  
WALLPAPER



Eichler Siding  
"In the groove since 1987"

ARCHITECTURAL  
SURFACES

FLOR



KARDIEL

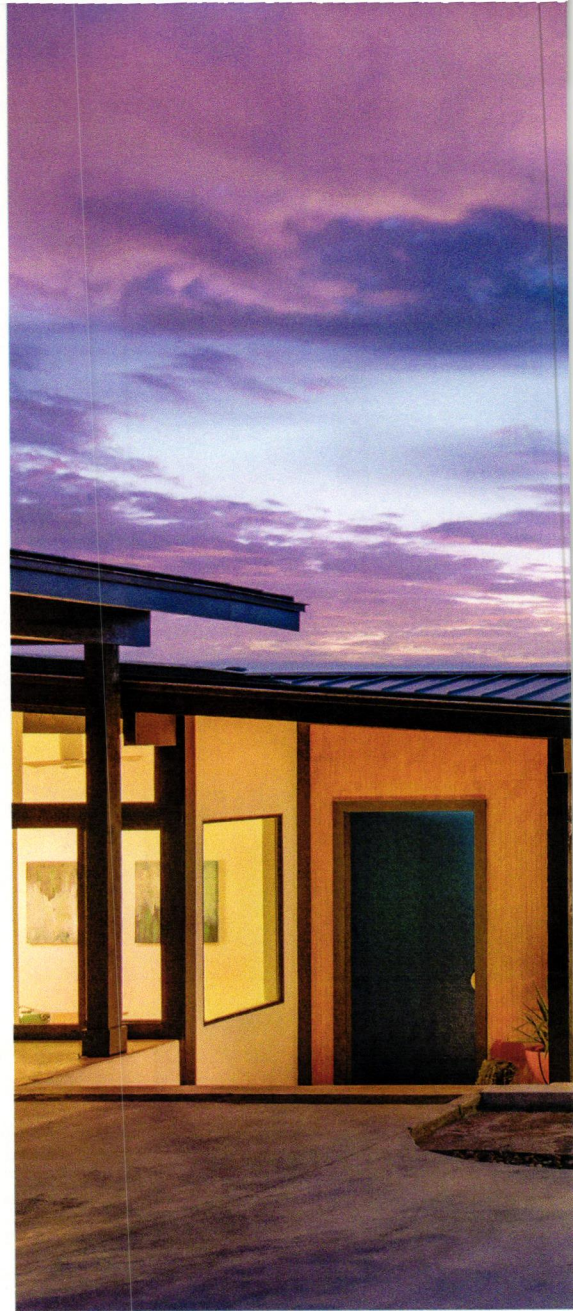
LUMENS  
Enlightened by Design

B&W Tile  
Vintage Original Since 1949

Ply Gem®

EMTEK®

woodgrain



**TOP, LEFT:** EICHLER SIDING FLANKS THE FRONT ENTRANCE OF THE HOME AS A TEXTURED FEATURE WALL, ADDING YET ANOTHER AUTHENTIC TOUCH TO THIS BUILD. ALONG WITH THE TONGUE-AND-GROOVE PINE SOFFIT, THE NATURAL WOOD MATERIALS HELP THE DARK-TEAL DOOR FROM ESCON DOORS STAND OUT.

**LEFT:** THE DARK-TEAL FRONT DOOR FROM ESCON DOORS WELCOMES GUESTS INTO THE ENTRYWAY OF THE HOME, AND THE EICHLER SIDING ACCENTUATES THE HIGH CEILINGS. "IT'S MORE REFINED THAN BEAMS AND GIVES THE CEILING MORE PERSONALITY," CHRISTINE POINTS OUT. "I WANTED TO GET CREATIVE WITH THE APPLICATION OF THE EICHLER SIDING, AND IT WAS MY SOLUTION TO ELEVATE THE LOOK OF STANDARD BEAMS." THE RETRO MCM MOTIF IN THE FLOR RUG BALANCES THE BAUHAUS MOVEMENT SHAPES IN THE OVERHEAD LIGHT FIXTURE, PROVIDING A UNIQUE MIX OF STYLES. A LUMENS CHANDELIER PUNCTUATES THE SPACE WITH TWO-TONED DETAIL.

“Anshen and Allen and Cliff May were the most influential on this new build.” —Michael Wray

THE ENTRYWAY COURTYARD SITS 4 FEET BELOW THE DRIVEWAY TO CREATE AN OUTDOOR SPACE THAT'S ON THE SAME LEVEL AS THE HOUSE. “THE VIBRANT COLORS FROM THE PLANTER BED ARE AT EYE LEVEL FROM THE BEDROOM, SO IT MAKES YOU FEEL AS IF YOU'RE SUNKEN INTO THE GARDEN,” MICHAEL POINTS OUT. “IT'S A GREAT LOOK FROM INSIDE.” WITH ITS ROCK FLOORING AND EAST-FACING LOCATION, IT'S ABLE TO STAY COOL THROUGHOUT THE DAY.



## MAKING AN ENTRANCE

Your front door sets the tone for your home. It affects curb appeal and determines how much work you put into maintaining your front entrance. That's why it's important to not only take the style of your door into account, but its material as well.

**Our Project House Austin** front doors are sponsored by Escon Doors. This company's Mid Century Modern line offers fiberglass doors in retro styles and colors that are durable and will fit into any MCM aesthetic.

“MasterGrain's unique NVD (silicone casting) technology produces the most genuine look of real wood in fiberglass without the negative aspects of wood or steel,” says Escon Doors' General Manager Gerry Levya.

Here are some facts to keep in mind when choosing your front door material:

### Wood vs. Fiberglass

#### Wood

- You need to recoat it every two years.
- It might have issues with termites and tannins.
- It can split and swell if it takes on moisture.

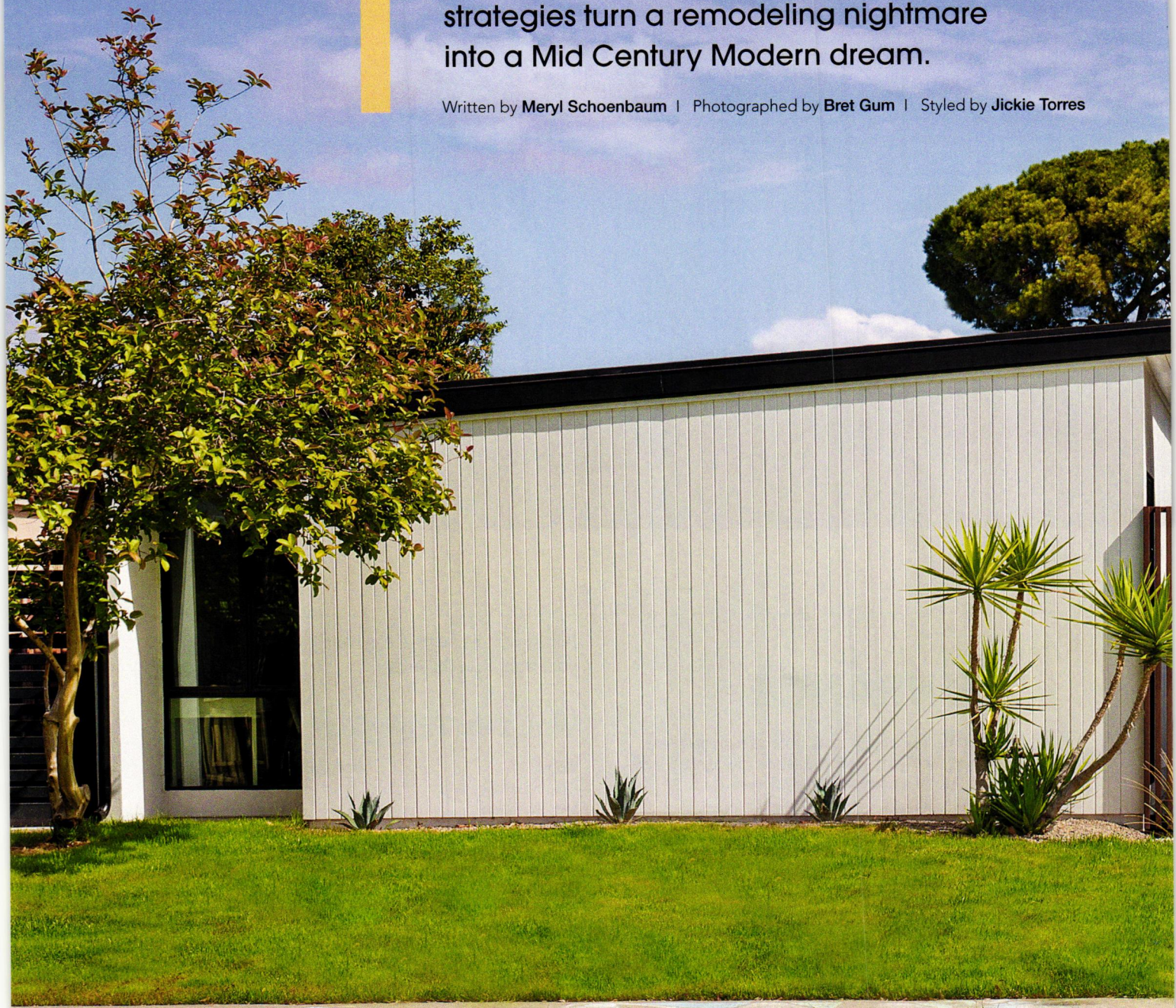
#### Fiberglass

- It can't crack, expand or contract.
- It offers better insulation.
- It has more room for interior wood reinforcement. “Most fiberglass doors only have an inch of laminated stand lumber in their doors for support,” Levya points out. “We put 4.12 inches in ours. This prevents our doors from warping and increases your hardware options.”

# Forever Home

Hard work, creative visions and clever strategies turn a remodeling nightmare into a Mid Century Modern dream.

Written by **Meryl Schoenbaum** | Photographed by **Bret Gum** | Styled by **Jickie Torres**



**As they embark on their adventures in house hunting,** many people aren't sure where to look for their Mid Century Modern dream home.

But that wasn't the case with Susan Schroeter and her husband, Philip. They knew exactly where to find their forever home ... in fact, its name led them to it.

"We knew the neighborhood was trying to bring more MCM enthusiasts to help restore and renovate the beautiful 'Fullerton Forever' [in Fullerton, California] tract homes," Susan says. "After diving into the history of their homes, we loved and wanted to preserve details such as the floor-to-ceiling windows, flowy interior, sunny atrium and brick fireplace."

Not only did Susan and Philip know where to find their MCM dream home, they also knew which architect's style they wanted: Joseph Eichler's.

"We both love the clean, simple lines, post-and-beam construction, open floor plan, atrium and large glass windows that provide lots of natural light to bring the outdoors in," Susan explains.

According to FullertonHeritage.org's website, "[Eichler's] homes were noted for their simple, plain façades; few windows; flat roofs and carports situated front and center. A unique touch was orange trees in the front and backyards, a tribute to Fullerton's agricultural past. Eichlers have covered carports, sunny atriums, floor-to-ceiling windows, flowing interiors, and a sense of openness not found in conventional cookie-cutter homes."

While these Fullerton tracts, known as the Forever Homes, were built by local developers Pardee Homes, the floorplans are authentic A. Quincy Jones designs.

Susan and Philip decided on a 1955 three-bedroom Forever Home in this Southern California Fullerton community. However, their dream home wasn't exactly move-in ready.

"The remodel was a complete gut job—torn down to the studs," Susan says. "For so many years, this house's MCM look was erased by questionable additions. We wanted to bring this house back to how it was originally designed and built to show off its unique MCM look, staying true to the Eichler architecture and interior styling."



THIS RESTORED 1955-BUILT HOME IN FULLERTON, CALIFORNIA, IS A FINE EXAMPLE OF EICHLER ARCHITECTURE, WITH ITS UNCLUTTERED FAÇADE THAT FEATURES MINIMAL WINDOWS AND A STREAMLINED ROOF. THE CARPORT IS SITUATED FRONT AND CENTER. ACCORDING TO FULLERTONHERITAGE.ORG, THIS WAS AN ACKNOWLEDGEMENT OF THE CAR AS A SYMBOL OF SOCIAL STATUS AT THE TIME.

A CUSTOM, HEATHER-GRAY, L-SHAPED SOFA AND A SHELL-SHAPED LOUNGE CHAIR ANCHOR THE LIVING ROOM. "UNFORTUNATELY, WE WEREN'T ABLE TO CHOOSE THE POLISHED CONCRETE FLOOR FINISH THROUGHOUT THE HOME AS WE INITIALLY HOPED, BUT WE WERE STILL ABLE TO HAVE THE CONCRETE LOOK WITH THE LARGE, 4X2 PORCELAIN TILES," SUSAN POINTS OUT.





The careful work to restore—and, in most cases, untangle the complicated fixes—was entrusted to Alex Cerda, the CEO of local Huntington Beach-based design-build-contractor firm Keynote Builders.

Alex's plan was to take the house back to its former glory and upgrade it to conform to today's standard of living.

"My goal was to respectfully redesign a true Eichler home and meet my clients' expectations by incorporating original architectural features with the homeowners' inspirational designs. To bring back its original features, we added glass in the back and an open-air atrium. We combined the design details with modernized color schemes and finishes. By creating a 3-D model of the house based on the homeowners' inspiration photos, it helped them visualize how their rebuilt home would look. For budget purposes, the design had only a few changes, but the homeowners fell in love with them."

The building's aging infrastructure presented a built-in set of challenges during the remodel.

"Once construction started, we uncovered so many hidden 'demons' within the walls, roof and floors," Susan points out. "The biggest challenge was dealing with the unexpected—mold and water damage, pipes and sewer lines needing to be replaced—which meant increasing our renovation budget. More than a quarter million dollars went into restoring this home. We practically built a new home, but fortunately, we were able to preserve some of the natural aesthetics on one side of the house, such as the wood paneling made from the center of a redwood tree."

Alex explained the importance of reconstructing the historic home from the ground up: "The fact that we were able to get the house all the way down to the studs and update all the utilities are crucial to the home's performance in the long term. Being able to upgrade all the bones of the house and then waterproofing everything—using a zip-system sheathing product to help seal the building envelope—helps maintain the energy efficiency. Upgrading all the windows to dual-pane glass was also crucial, because the old Eichlers only have single-pane glass. We upgraded everything so that now, it's more insulated with much better performance than a lot of the original Eichlers. With these kinds of upgrades, the Forever Homes will last forever because of the way that they're built from the foundation."



## STYLING STRATEGIES

Once the remodel and renovation work was done, Susan was able to focus on the interior design.

"We were aiming toward a simple, minimalist design with a hint of fun colors here and there," she says.

Color was strategically placed throughout the home.

"We wanted a timeless palette, so we went with simple, neutral colors (white, black and gray) as the base of the house and wanted to add few splashes of color (colorful paintings, brightly colored vases and a deep-midnight-blue accent wall near the kitchen). Our interior and exterior base colors are similar so that the continuity of color makes it feel more like an indoor/outdoor living space. The iconic splash of color seen outdoors is our aqua-blue front door."

Susan gave each interior space careful consideration when it came to styling.

"I had a certain décor style in mind for each room, incorporating our existing furniture but also adding a few MCM pieces and a lot of walnut and wood accent pieces to cohesively bring everything together," she says. "In terms of building the actual home and room layouts, our contractor, Keynote Custom Builders, knocked it out of the park with the design aspects of the home. We told Alex exactly what we wanted, and he took all our recommendations and incorporated them seamlessly."

Smartly layered textures, finishes and patterns are evident throughout the home.

"We added the walnut woodgrain textures within the kitchen cabinets and carried them over to the bathrooms for a cohesive look," Susan points out. "We kept the kitchen very clean and simple, with white quartz for the countertops and custom kitchen door paneling to match the kitchen pantry."





**LEFT:** TO KEEP THE FLOOR PLAN “FLOW-CONTINUOUS” FROM THE LIVING ROOM TO THE KITCHEN AND DINING ROOM, THE WALLS WERE TORN DOWN TO OPEN THE SPACE. ON THE LIVING ROOM SIDE, THE TORN-DOWN WALL TURNED INTO A BAR-TOP COUNTER SPACE FOR EXTRA SEATING. THE WATERFALL COUNTERTOP IS MADE OF WHITE QUARTZ, AND THE CUSTOM CABINETS ARE MADE OF WALNUT THAT HIGHLIGHTS THE BEAUTIFUL GRAIN. THE WALNUT ACCENTS CONTINUE ALONG THE WALLS, WHERE THE CONTRACTOR MADE CUSTOM FLOATING SHELVING UNITS.

**TOP, LEFT:** “THE OLD DESIGN OF THE HOME HAD THE WASHER AND DRYER IN THE KITCHEN. WE MOVED THEM TO THE UTILITY CLOSET AND CONVERTED THE SPACE INTO AN ALL-WHITE KITCHEN PANTRY AND A JENNAIR CUSTOM-PANEL FRIDGE. ADDITIONAL STORAGE WAS MADE AT THE TOP FOR KITCHEN APPLIANCES AND LARGE POTS,” SUSAN SAYS.

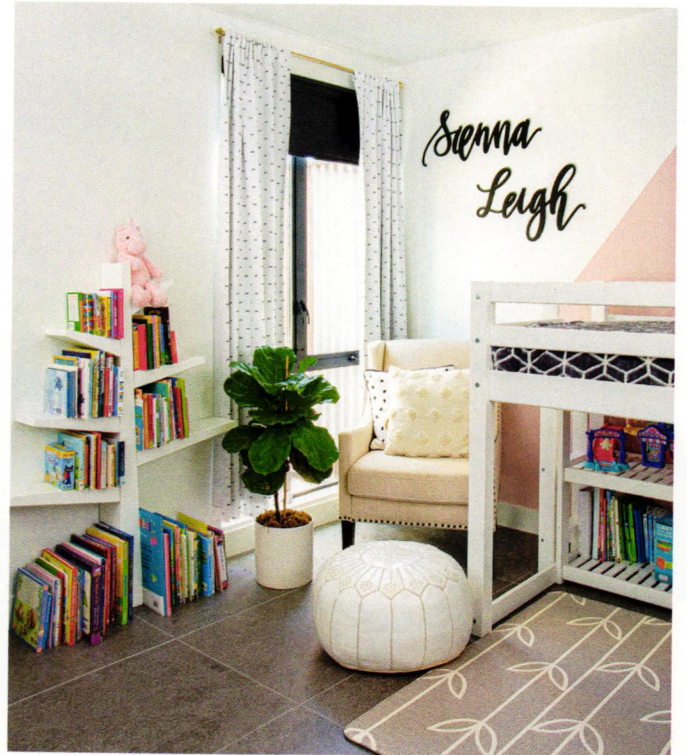
**TOP, RIGHT:** RECESSED SHELVING UNITS WERE CUSTOM MADE TO PROVIDE EXTRA STORAGE IN THE PRIMARY BATHROOM.

**RIGHT:** LOTS OF BUILT-IN STORAGE THAT MATCHES THE COLOR OF THE WALLS WAS A WELCOME ADDITION TO THE KITCHEN.



THE DINING ROOM HAS FLOOR-TO-CEILING WINDOWS THAT FACE THE BACKYARD. OVER THE ACACIA WOOD DINING TABLE AND BENCH IS A CURVILINEAR, BRASS/BLACK CHANDELIER FROM WEST ELM. A MIDNIGHT-BLUE WOOD PANEL ACCENT WALL WITH A GEOMETRIC PAINTING SEPARATES THE KITCHEN FROM THE DINING ROOM.





**CLOCKWISE FROM TOP LEFT:** THE PRIMARY BATHROOM CABINETS ARE MADE FROM WALNUT AND WHITE QUARTZ THAT RELATE TO THE KITCHEN. THE GLASS-GLOBE VANITY LIGHT FIXTURE IS SIMILAR TO THE KITCHEN CHANDELIER. LARGE, WHITE SUBWAY TILES, A MATTE-BLACK WATERFALL SHOWERHEAD AND WHITE PENNY-ROUND FLOORING ADD TEXTURE AND CONTRAST TO THE ROOM. THE GUEST BATHROOM FEATURES FLOATING CABINETS MADE FROM WALNUT, AS WELL AS AN ACCENT WALL MADE FROM GRAYISH-BLUE MOROCCAN HEXAGONAL TILES. THE SUBWAY TILE CONTINUES AROUND THE DEEP SOAKING BATHTUB. THE PRIMARY BED HAS A TALL, KING-SIZED, CHEVRON-PANELED HEADBOARD MADE FROM RECLAIMED PINE WITH A HONEY FINISH. "WE PAINTED THE WALL OF OUR DAUGHTER'S ROOM WITH BLUSH-PINK AND SILVER-GRAY GEOMETRIC SHAPES," SUSAN SAYS. "A LOFT BED WAS INCLUDED TO PROVIDE MORE FLOOR SPACE, AN AREA TO READ HER BOOKS AND PROVIDE EXTRA STORAGE FOR HER TOYS. THE WINDOW FACING INTO THE ATRIUM BRINGS IN NATURAL LIGHT NEXT TO THE LOUNGE CHAIR AND THE BOOKSHELF THAT'S SHAPED LIKE A WOODEN TREE."

"WE DECIDED TO CONVERT THE CARPORT INTO AN ENCLOSED ATRIUM TO PROVIDE MORE PRIVACY (ESPECIALLY WITH THE FLOOR-TO-CEILING WINDOWS)," SUSAN EXPLAINS. "IT FEATURES A MATTE-BLACK METAL FRAME, FROSTED GLASS AND POWDERED COPPER/ BROWN RODS FOR CONTRAST WITH THE GLASS ENCLOSURE. THE ATRIUM HAS POTTING AREAS WE FILLED WITH BLACK VOLCANIC ROCKS, AMORNING.MY BAMBOO PRIVACY BUSH, MORE YUCCA TREES AND CACTUS."



In the primary bathroom, we continued the simplistic look with rectangular subway tiles going vertically, along with white penny-round flooring. In the second bathroom, we added floor-to-ceiling grayish-blue Moroccan mosaic hexagonal tiles on one wall to give it a little flair. We added the same black/gold glass globe to each bathroom to bring it all together.”

Some of Susan’s favorite styling aspects include the skylight in the atrium, dual-pane, floor-to-ceiling windows for maximizing natural light, the custom refrigerator panel and the bathrooms.

Even with all the time, effort and expense spent remodeling her “forever home,” Susan wouldn’t change a thing about it now.

“It was a whirlwind of a process restoring our Fullerton Forever Home, but it was definitely worth it,” she says. “It’s a complete gem, and we hope more MCM enthusiasts will move into the surrounding area.” 🌿

SEE SOURCES, PAGE 87.

**RIGHT:** HARDY PLANTS, SUCH AS A CACTUS, FLANK THE FRONT DOOR FOR AN INVITING LOOK OF GREENERY TO WELCOME GUESTS.

**BELOW:** ICONIC ACAPULCO CHAIRS OFFER RELAXATION, AS WELL AS A DIFFERENT SHAPE, TO SOFTEN THE STRAIGHT LINES IN THE SPACE AND ADD INTEREST.

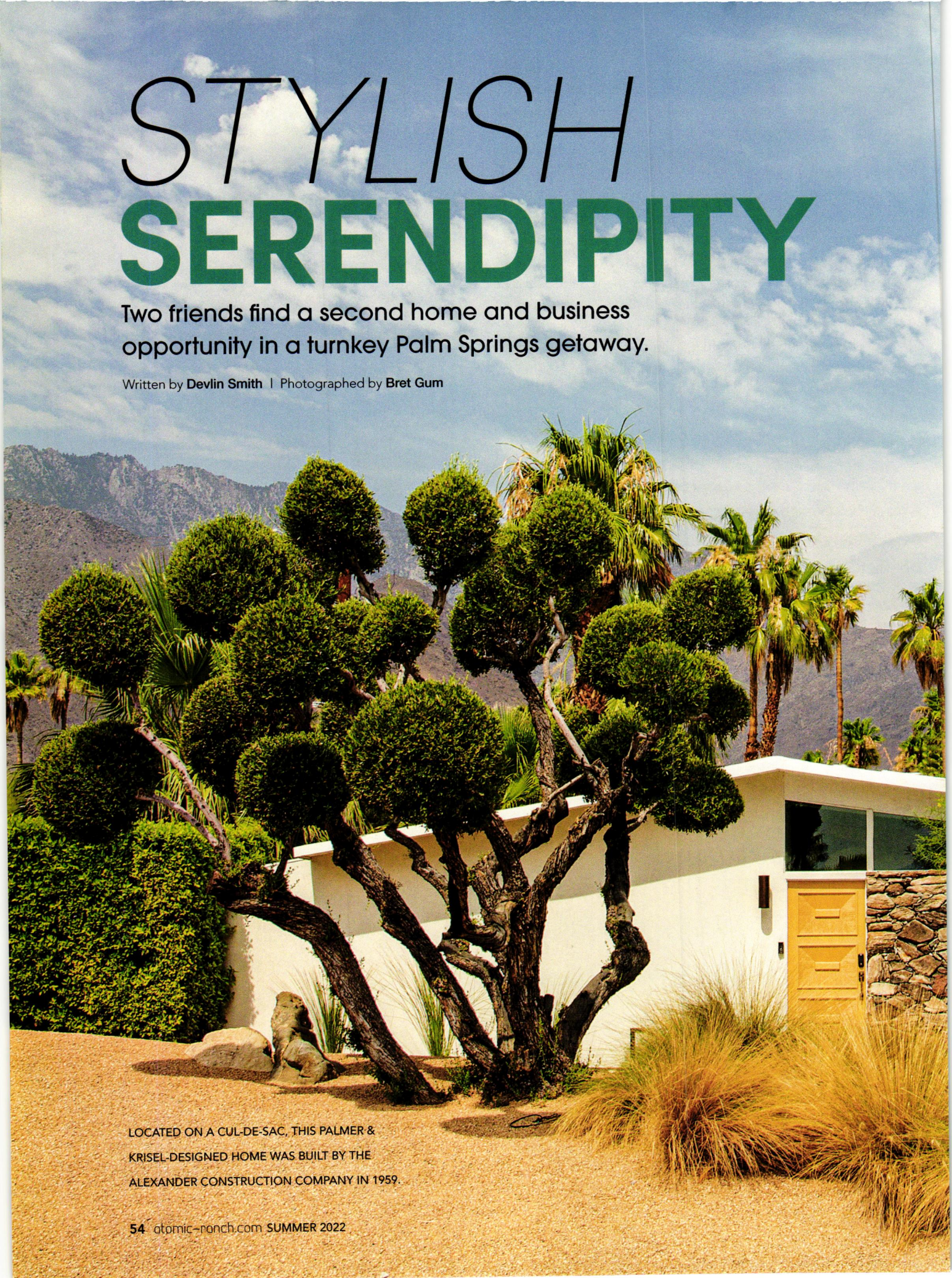


“Our interior and exterior base colors are similar so that **the continuity of color makes it feel more like an indoor/outdoor living space.** The iconic splash of color seen outdoors is our aqua-blue front door.”

# STYLISH SERENDIPITY

Two friends find a second home and business opportunity in a turnkey Palm Springs getaway.

Written by **Devlin Smith** | Photographed by **Bret Gum**



LOCATED ON A CUL-DE-SAC, THIS PALMER & KRISSEL-DESIGNED HOME WAS BUILT BY THE ALEXANDER CONSTRUCTION COMPANY IN 1959.

**The first post on the @theretropalmsprings**

**Instagram account** comprises a series of videos that friends Nathan Wilson and Matt Garbauskas took as they walked through their new home. It's a single-story Palmer & Krisel design built by the Alexander Construction Company in 1959.

The three-bedroom, two-bath home with a one-bed, one-bath casita makes an incredible first impression—and second and third—with its brilliantly designed interiors that feature a mix of pristine vintage finds and period-accurate selections chosen by the home's previous owners and now meticulously cared for by Nathan and Matt.





"Finding someplace furnished wasn't at the top of the list, but when you find someplace as perfectly put together as this one, it's hard to pass up," Nathan says. "In many cases, finding a home that's absolutely turnkey is rare, but this one definitely was."

Hailing from Seattle, Washington, Nathan and Matt started looking for a home in Palm Springs during the pandemic, aiming to find a warm, sunny retreat in a home with plenty of outdoor space.

"Escaping some of the grayest times of the year to a place with so much sunshine is so nice," Nathan says of Palm Springs. "Beyond that, it's just a beautiful, fun, vibrant small city with a ton of amazing art, architecture and restaurants."

The friends began the search for their Palm Springs home from Washington and were immediately taken with the 1960s and '70s feel of this particular place.

"It's interesting: We actually put our first offer on the house without seeing it in person," Nathan explains. "Thankfully, we had our great realtor and friends in Palm Springs take a tour and show it off over FaceTime to make sure it really was as amazing as the photos—and it was. It was very exciting to finally see it in person and realize it was exactly what we hoped it would be."

**LEFT:** THE CURRENT HOMEOWNERS ADDED THEIR OWN TOUCH TO THE FULLY DECORATED HOME BY PURCHASING THIS 1960S PIERRE PAULIN CHAIR FOR THE CASITA LIVING ROOM.



WITH ITS STRIKING ORANGE-AND-ELECTRIC BLUE  
PALETTE, THE CASITA LIVING ROOM IS A FAVORITE  
OF THE HOMEOWNERS AND GUESTS ALIKE.





THE GOLD LIVING ROOM EXEMPLIFIES WHAT HOMEOWNER NATHAN WILSON APPRECIATES ABOUT 1960S STYLE. "I LOVE THAT MID CENTURY MODERN TENDS TO ALLOW FOR MORE CREATIVITY WITH COLORS, SHAPES AND AESTHETICS THAT YOU DON'T ALWAYS FIND IN OTHER DESIGN STYLES."

## LET IT SHINE

In decorating the home, the former owners had decided on a look that was more "Valley of the Dolls" than "Rat Pack"; it seemed like a departure from the classic Palm Springs take on mid-century style that Nathan appreciates.

"In my opinion, some of the mid-century homes around Palm Springs can tend to start looking very much alike—the same doors, the same interior layout and often, the same furniture," he says. "I like that our house is much more unique and allows each room to present a visual feast for the eyes, often in ways our guests don't expect."



**ABOVE:** A SMALL SPACE THAT MAKES A BIG IMPRESSION, THE MAIN HOME'S LIVING ROOM FEATURES VINTAGE GOLD WALLPAPER AND A COUCH THAT WAS CUSTOM MADE FOR THE FORMER OWNERS.

**BELOW:** SET NEAR THE ENTRANCE, THE KITCHEN OFFERS A SUBTLE NOD TO THE HOME'S OVERALL DÉCOR VIA ITS METALLIC ACCENTS AND PERIOD LIGHT FIXTURES.





The main home is decorated in a palette of shimmering metallics and mellow earth tones used in geometric designs on wallpapers, artwork, throw rugs, furnishings and even shower tiles for a hip and elegant effect. The styling for the casita is more electric and psychedelic, welcoming in guests with a shocking-orange wallpaper in the living room.

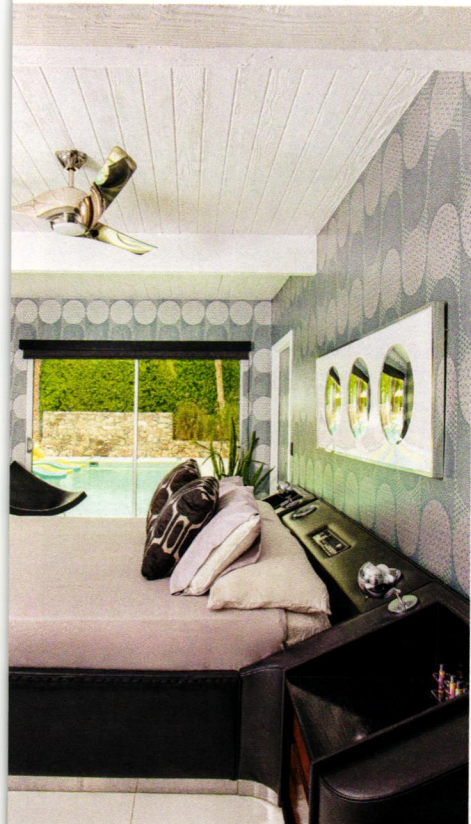
"Every room has its own unique character, from the wallpaper to the furniture," Nathan points out. "It's so fun to walk through the house and enjoy all the different vintage vibes. There are quite a few rare pieces and actual vintage wallpapers you probably won't see anywhere else."

One rare piece featured in the casita is the headboard in the bedroom.

"The former owners actually bought it from a vintage shop in Los Angeles," Nathan says. "The story is that you could custom-order this bed from the *Playboy* catalog. It was in pretty rough shape but was reupholstered with black Naugahyde vinyl, and the side tables were restored. There's even a working eight-track player in the headboard."

### PERSONALITY PLUS

While the home was in move-in condition when they purchased it, Nathan and Matt have added some of their own touches since taking ownership last year. However, they are careful to uphold the former owners' aesthetic.



ABOVE, LEFT: THE CASITA BEDROOM IS DECORATED WITH A VINTAGE GRAY-AND-WHITE WALLPAPER FEATURING CIRCULAR PATTERNS. THE RARE HEADBOARD IN THE CASITA BEDROOM CONTAINS A WORKING EIGHT-TRACK PLAYER.



"The furnishings are a mix of vintage and new, but all have a similar stylistic feel," Nathan explains. "It's important that any additional pieces we bring into the home fit into that mix. For example, when looking for additional seating in the casita's living room, we opted for a Pierre Paulin chair that was originally designed for the airport waiting area for the French Concorde flights in the 1960s."

Because the home isn't their primary residence, Nathan and Matt don't mind taking styling cues from someone else.

"I think when you're shopping for a second home, it's a little less important to make sure that every inch reflects your personality. Sure, it should be functional and meet all your needs, but the second home also gives you the chance to have a little more fun and try a different vibe that feels like more of a getaway spot," Nathan says.



**ABOVE, LEFT:** THIS GUEST ROOM PICKS UP MANY OF THE DESIGN THEMES FOUND THROUGHOUT THE HOME, WITH GOLD ACCENTS IN THE WALLPAPER, GEOMETRIC PATTERNS IN THE ARTWORK AND EARTH TONES IN THE ACCENT PIECES.

**ABOVE, RIGHT:** THE PRIMARY BATHROOM IS HIP AND ELEGANT AS A RESULT OF ITS GOLD MOSAIC BACKSPLASH AND GOLD-AND-BLACK HEXAGONAL SHOWER TILES.

**RIGHT:** THE DÉCOR FOR THE TWIN BEDROOM TAKES A MORE SUBTLE APPROACH BUT MAINTAINS THE 1960S AND '70S FEEL OF THE REST OF THE HOME VIA ITS EARTH-TONED ACCENT PIECES.



The friends, who list the home as a short-term rental when they're not using it, have plans to mimic this home's vibes in future investment properties.

"While I love the house, it has such a unique and vibrant look that it's become a very attractive rental property," Nathan says. "Groups looking to have a fun, Palm Springs 'retro' experience have been keeping it booked up over the last several months, but that doesn't mean we haven't taken advantage of staying there ourselves for periods of time. Owning this house has definitely made us start looking at other homes in the area that we can design in a similar way." 🌿

“It’s so fun to walk through the house and enjoy all the different vintage vibes. There are quite **a few rare pieces** and **actual vintage wallpapers** you probably won’t see anywhere else.”



THE PRIMARY BEDROOM IS DECORATED WITH VINTAGE 1970S WALLPAPER THAT PICKS UP ON THE METALLIC AND GEOMETRIC DESIGN THEMES USED THROUGHOUT THE HOME.

THE HEATED POOL IS ACCESSIBLE FROM THE MAIN HOUSE'S LIVING ROOM, AS WELL AS FROM EVERY ROOM OF THE CASITA.



## HOST DUTIES

There are more than 300 listings on short-term rental sites of homes that are available for vacationers looking for a Palm Springs getaway. Nathan Wilson and Matt Garbauska's home is one of those properties.

"The home is built for entertaining; and, without us living there full-time, it would feel terrible to leave such a work of art just sitting there with no one to appreciate it," Nathan says. "I think it's the kind of house that just makes sense to rent out."

For any homeowner, welcoming guests can be a stressful proposition. But, if those guests are strangers—and the house is a mid-century showplace with many vintage and one-of-a-kind elements—that's something else entirely.

Nathan and Matt are happy to share their meticulously styled mid-century gem ... as long as guests follow the rules. They have found ways to address those concerns (such as strict no-smoking, no-pets and no-parties policies) when welcoming guests.

"Of course, there are concerns about potential damage to the vintage furniture and wallpaper, but we've been very fortunate that all our guests have appreciated the unique design and have been very respectful not to damage anything," Nathan says. "When it comes to rentals, I'd encourage other mid-century homeowners to do what makes them most comfortable. Palm Springs is an amazing place to visit, and I'm thrilled to get to share the city with new people from around the country through our home."

LEFT: LOCATED OUTSIDE THE KITCHEN, THIS OUTDOOR DINING AREA CONNECTS THE MAIN HOME TO THE CASITA.





BELOW, LEFT: THE PRIMARY BEDROOM OPENS ONTO THIS PRIVATE OUTDOOR SHOWER AND TUB WITH VIEWS OF THE BEAUTIFULLY LANDSCAPED BACKYARD.

BELOW, RIGHT: EVERY SPACE HAS ITS OWN UNIQUE STYLE THAT'S STILL COHESIVE WITH THE REST OF THE HOUSE. ONE SUCH ROOM IS THIS SMALL BATHROOM, WHICH FEATURES METALLIC ACCENTS AND A GEOMETRIC PRINT WALLPAPER.



UNPACK PLENTY OF VINTAGE STYLE ON THE LAWN WITH THE USE OF EXCITING COLORS, PATTERNS, SHAPES AND TEXTURES.



# The Mod Days of Summer

Warmer temperatures, longer days, backyard barbecues ... it's time for outdoor activities.

Written and photographed by Robert Maurer

**Vacations are at the top of everyone's minds this time of year**, but a getaway doesn't always require packing up the car or boarding a plane. Kicking back to enjoy your home is every bit as important as the work you pour into it year round.

So, why not take a break to reflect on your home's progress (or potential) with a backyard picnic?

Here are a few pointers for a stylish and tasty afternoon event that's just a few steps beyond the patio. There's so much to enjoy in the spaces that are closest to us, so make the most of the sunny vibes by getting outside!

## SUN-DRENCHED STYLE

Hosting a backyard picnic is a cheerful way to welcome summer with family and friends; it can also be an opportunity to break out the vintage collectibles.

If you're looking for a picnic basket, try searching for popular brands such as Hawkeye or Redmon. They're often hiding at thrift stores and antique malls. If you're lucky, they might even come with original plates, cups and utensils.

Yes, paper plates can work in a pinch, but a picnic is an opportunity to add mid-century flair.



VINTAGE JAPANESE ENAMELWARE PLATES AND MUGS ARE LIGHTWEIGHT, DURABLE AND FULL OF COLORFUL PICNIC STYLE.

If melamine is your “thing,” seek out brands such as Melmac or Lenox for hundreds of patterns and colors. Enamelware is a great way to create a more elevated look. Iconic brands such as Catherineholm and OTO are excellent for adding fun color combinations and vintage charm to your picnic setting.

## CHOOSE AND DESIGN A LOCATION

Whether you prepare an array of snacks for a small group or opt for potluck offerings, styling a cozy spot on the lawn can add a dash of magic to a backyard gathering.

Give these styling suggestions a try as you plan your own afternoon retreat:

- Use a large, colorful blanket as your base. A queen-sized blanket can accommodate four to six people, while a vintage tablecloth makes an excellent ground cover for two to four guests. If you are concerned about grass stains, place another blanket or plastic drop cloth on the ground before adding your top layer.
- Pack compartment plates, mugs, utensils and colorful cloth napkins into a vintage basket for a proper summer lunch *al fresco*.
- Incorporate color with a variety of new and vintage serving pieces. Summertime calls for vibrant, punchy colors, so go bold and bright to keep the mood fresh and festive.



AN ASYMMETRICAL WREATH IS SECURED TO THE DOOR WITH TWO STRATEGICALLY PLACED CLEAR HOOKS.

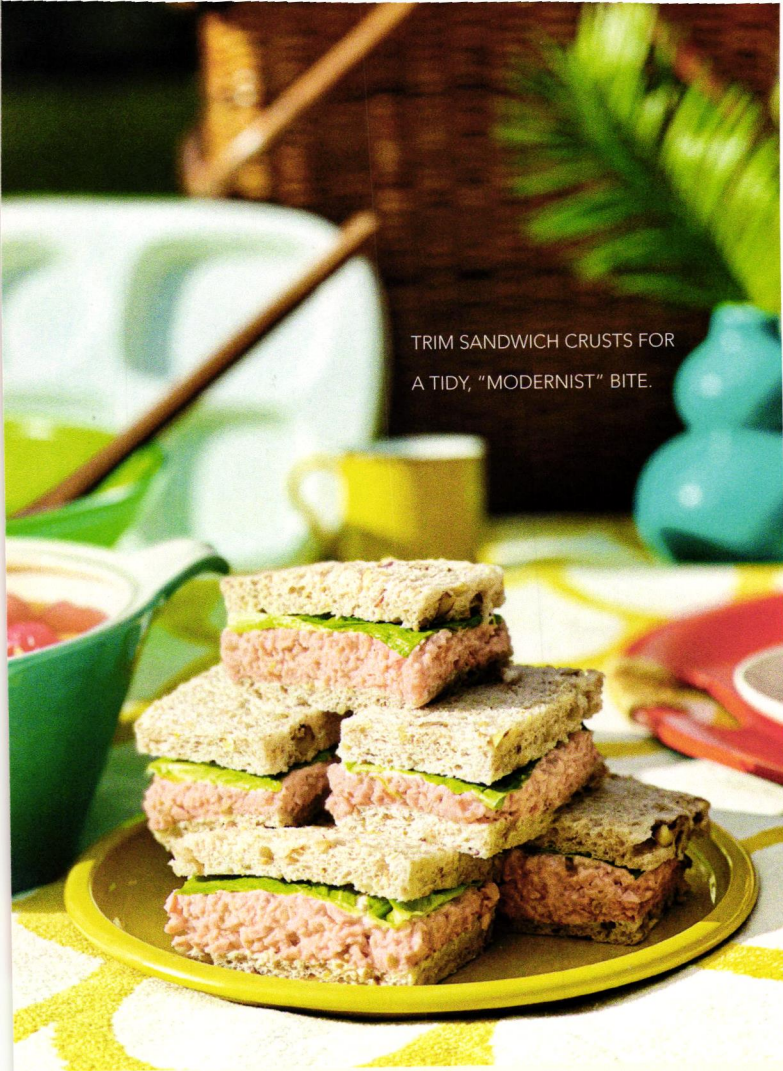
- Use a serving tray. Having a solid surface for cups and pitchers keeps your drinks in balance, despite any surrounding movements on an uneven surface.
- Bring a vase for a distinct touch within your setup. A modest clipping from your landscaping goes a long way to make your picnic feel extra-special and connected to the outdoors.
- Set the mood to music with a portable speaker ... or bring a compact record player to spin a few vinyl favorites in true vintage fashion.

## ENHANCED ENTRY

Bold front door colors are synonymous with Mid Century Modern homes, but finding a way to add seasonal flair to a door in a noncompeting way can sometimes be a challenge. A festive, modern wreath is an excellent way to add a handmade touch to your entryway.

**Keep it modern.** Leave one-third to one-half of the wreath frame uncovered for a simplified, structural look.

**Test fit.** Before wiring anything into place, loosely compose your items to see which configurations work best. Then, take a photo for reference.



TRIM SANDWICH CRUSTS FOR A TIDY, "MODERNIST" BITE.

**Choose a feature.** Choose items for the focal point of your wreath. Make them your center point and build out from there. Break the rules of symmetry for a modern design approach!

**Incorporate color.** Pairing layers of lush greenery with vivid, tropical elements can be an exciting way to represent summer. Use accent items that match the color of your door for a coordinated effect.

**Prepare the surface.** Before hanging your wreath, give your door a good wipe-down with warm water and a soft cloth. Use a damage-free, clear, adhesive hook to safely secure your wreath.

(DIVE DEEPER INTO MAKING THIS PROJECT AND MORE AT [MIDCENTURYMAURER.COM](http://MIDCENTURYMAURER.COM)).



PHOTO BY TRAVIS PACHECO

Robert Maurer is the creative director and residential designer at Commuter Industries. In this column, he shares highlights from his home that are geared toward design, entertaining, restorations, home improvements, recipes, décor and more. We hope you'll find inspiration in these features that you can apply to your own mid-century home and way of life. Find more project inspiration at [midcenturymaurer.com](http://midcenturymaurer.com).

## BACKYARD BITES

A picnic just isn't a picnic without a spread of delicious, easy-to-eat items. Chilled salads, small sandwiches, cookies and frozen treats are a few of my favorite picnic foods. Give these fun and easy recipes a try for an element of nostalgic flavor on your menu:

### HAM SALAD SANDWICHES

**YIELD:** 12 mini-sandwiches

#### INGREDIENTS

2 lbs. smoked boneless ham (fully cooked and cut into large dice)  
 1½ cups mayonnaise  
 ¼ cup dill relish  
 1 tsp. coarse-ground black pepper  
 12 slices whole-grain wheat bread  
 Butter lettuce

#### DIRECTIONS

Place the ham in a food processor and grind it to a fine, crumbled texture. Transfer the ham to medium bowl. Stir in the mayonnaise, relish and black pepper until they are evenly combined (refrigerate if you won't be eating right away). Spread about ½ cup of the mixture onto a slice of bread. Top with lettuce and another slice of bread. Slice the sandwich in half to create two sandwiches. Repeat this process for the remaining sandwich spread. Serve chilled.

### MANGO MARGARITA POPS

**YIELD:** 10–12 pops

#### INGREDIENTS

2 cups mango nectar  
 2 ripe mangoes, peeled and cut into large dice  
 ½ cup simple syrup  
 ½ cup lime juice  
 1/3 cup reposado tequila  
 2 Tbs. Cointreau

#### DIRECTIONS

Combine all ingredients in a blender. Pulse a few seconds to macerate the fruit. Pour into silicone ice pop mold and insert wooden sticks. Freeze overnight for best results.

**RIGHT:** WITH OR WITHOUT ALCOHOL, THESE REFRESHING FROZEN TREATS ARE PACKED WITH FRESH FRUIT FLAVOR AND VIBRANT COLOR.





# SIPARILA

Sustainably sourced  
genuine wood cladding

[cpsupply.us/siparila](https://cpsupply.us/siparila)  
[siparila@cpsupply.us](mailto:siparila@cpsupply.us)  
406-414-0786  
Follow us: [@siparila](https://www.instagram.com/siparila)  
[www.siparila.com](http://www.siparila.com)

## **B&W Tile**

*Vintage Original Since 1949*



*Colors We Have Those!!*

Come visit us [www.bwtile.com](http://www.bwtile.com)  
Call us 310-538-9579  
Email us [info@bwtile.com](mailto:info@bwtile.com)

## Original lamps preserving a mid-century look.

*Lume Home. Handmade  
lamps inspired by the past,  
made for the future.*

Lume Home (pronounced loom, as in to illuminate) makes original ceramic lamps inspired by mid-century modernism that bring handmade warmth and distinction to every room. These mid-century-inspired lamps are customized by your choice of glaze, texture, and wood and are individually artisan-made and assembled with care in Portland, Oregon.



Visit us today to order yours [LUMEHOME.COM](http://LUMEHOME.COM)  
Use code AR10 for 10% off



## BLACKWELL WOODWORKS



HANDMADE  
CLOCKS AND  
DECOR MADE  
ENTIRELY FROM  
UP-CYCLED  
GUITAR SCRAPS!



[BLACKWELLWOODWORKS.COM](http://BLACKWELLWOODWORKS.COM)

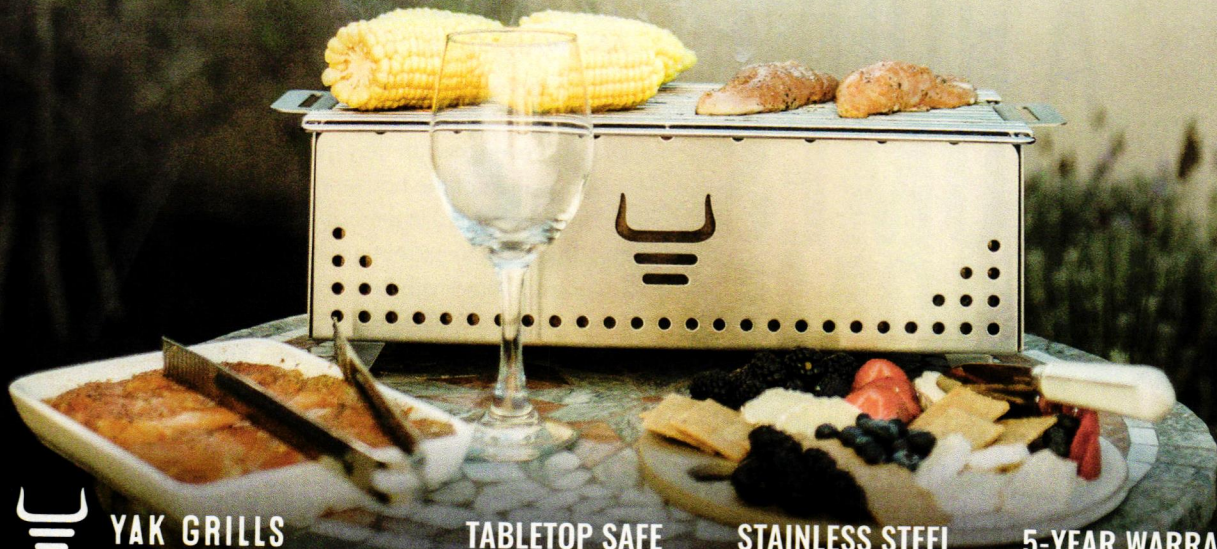




HANDCRAFTED TILE MADE IN PORTLAND, OR  
[www.clayhaustile.com](http://www.clayhaustile.com) | order direct at 503.928.3076

# THE MODERN SOCIAL GRILL

The YAK Grill brings the flavor of charcoal and the fun of connection to your favorite tabletop. Shop [yakgrills.com](http://yakgrills.com) with promo code **ATOMIC10** for 10% off.



YAK GRILLS

TABLETOP SAFE

STAINLESS STEEL

5-YEAR WARRANTY

BUCK, BRUCE AND SHERI STAHL  
ENJOY A POOL DAY. (PHOTO: BY SHERI  
GRONWELD. BRUCE STAHL, KIM CROSS;  
CHRONICLE BOOKS, 2021)



# WHEN A HOUSE BECOMES A HOME

The story of the Stahl house is told  
by the family who lived there.

Written by **Abigail Bloom** | Photography courtesy of **Chronicle Books**

**The Stahl House is known widely as an architectural marvel.**

It's a beautiful centerpiece nestled in the Hollywood Hills. Four walls completely made of glass encase what's considered to be the pinnacle of Mid Century Modern architecture.

But what about the family that lived there?

## AN AVANT-GARDE AMERICAN DREAM

Buck and Carlotta Stahl were a hardworking couple pursuing what can only be described as the "American Dream," even though they had a rather avant-garde interpretation of the house with the white picket fence.

They were living in a modest, one-bedroom apartment that Buck had been renting. While most of Los Angeles had been smothered with flats, the Hollywood Hills had remained blanketed with trees and lots for sale. As the result of a serendipitous encounter with one of the lot's owners, the Stahls bought the space (for \$13,500) that would later house their home.

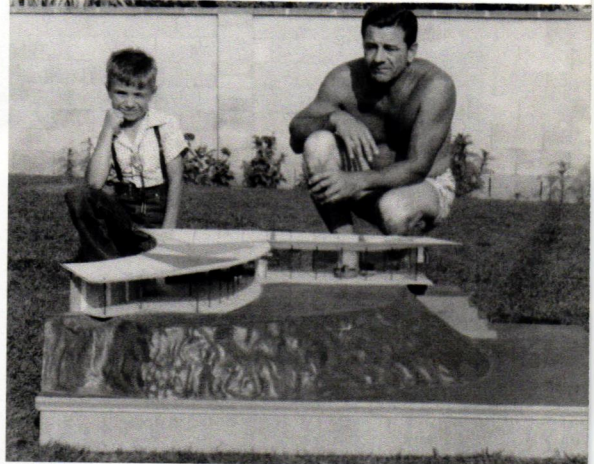
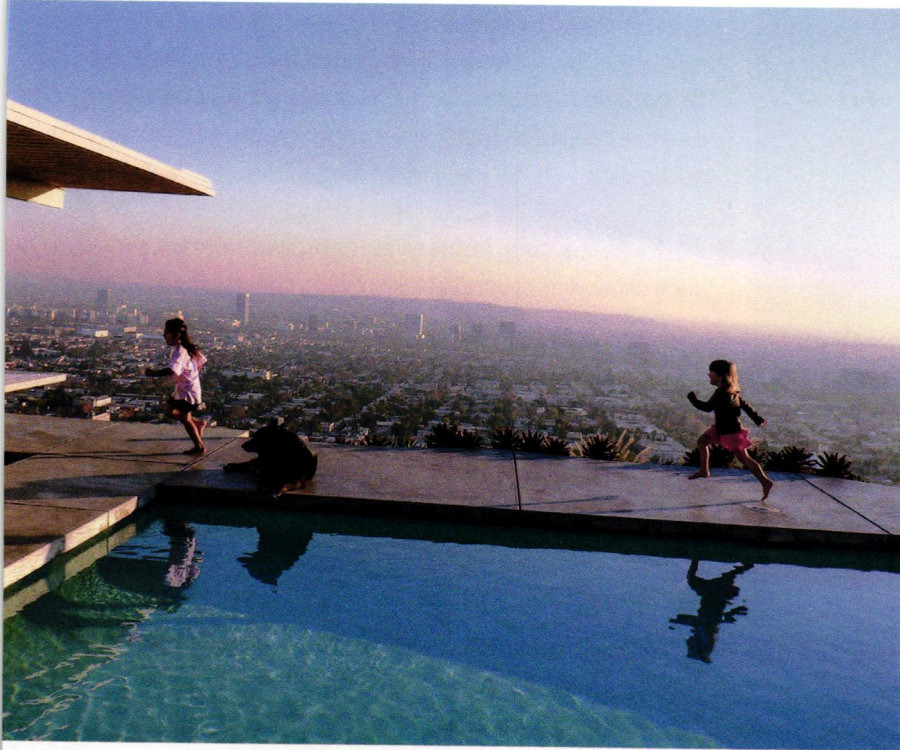
## BUILDING A HOUSE

They had the land, but now, the Stahls needed a house.



BELOW: THE STAHL GRANDKIDS RUN TOWARD NEW ADVENTURES.

(PHOTO: © SCOTT RADNIDGE; USED WITH PERMISSION)



Finding an architect was proving difficult, because many considered it impossible to build a house that would hang over the edge of a cliff.

They needed a cost-effective miracle ... and it came on April 1, 1959. John Entenza, the editor of *Arts & Architecture* magazine, sent a typewritten letter to Buck and Carlotta. In it, he offered to make their house a Case Study House tentatively called "Case Study House No. 22."

"The magazine will attempt, wherever possible, to secure discounts on materials specified for the project," Entenza wrote. "These savings, whenever obtainable, will be passed on to you."

They accepted the offer and soon after, they hired Pierre Koenig to design their dream home. The magazine offer stipulated that when the house was finished, it would be staged with furniture approved by the editor and the architect. The last condition was that before they moved in, the house would be opened for public tours.

TOP, RIGHT: PASSING ON CARLOTTA'S TRADITION TO THE STAHL GRANDKIDS—PILING DISH SOAP INTO THE JACUZZI (PHOTO BY SHERI GRONWELD. BRUCE STAHL, KIM CROSS; CHRONICLE BOOKS, 2021)

ABOVE, RIGHT: BUCK AND BRUCE STAHL WITH THEIR MODEL DREAM HOME (PHOTO BY SHERI GRONWELD. BRUCE STAHL, KIM CROSS; CHRONICLE BOOKS, 2021)

BELOW: THE STAHL HOUSE LOT BEFORE CONSTRUCTION (PHOTO BY SHERI GRONWELD. BRUCE STAHL, KIM CROSS; CHRONICLE BOOKS, 2021)



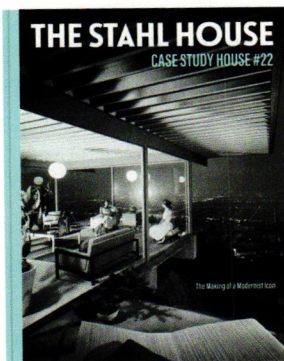


LEFT: BUCK, BRUCE AND MARK STAHL, ABOUT TO DIVE INTO THE ICONIC STAHL HOUSE POOL. IT'S BEEN USED AS A BACKDROP FOR COUNTLESS HOLLYWOOD FILMS, ADS AND FASHION SHOOTS. (PHOTO BY SHERI GRONWELD. BRUCE STAHL, KIM CROSS; CHRONICLE BOOKS, 2021)

BELOW, LEFT: BRUCE AND SHARI MILL ABOUT AMONG THE CREW AND CAST DURING THE FILMING OF THE TELEVISION SHOW, "COLUMBO." (PHOTO BY SHERI GRONWELD. BRUCE STAHL, KIM CROSS; CHRONICLE BOOKS, 2021)

BELOW, RIGHT: A STAHL HOUSE FAMILY GATHERING, CLIFFSIDE (PHOTO BY SHERI GRONWELD. BRUCE STAHL, KIM CROSS; CHRONICLE BOOKS, 2021)

TO READ MORE ABOUT THE PROCESS OF BUILDING THE STAHL HOUSE, VISIT [ATOMIC-RANCH.COM](http://ATOMIC-RANCH.COM).



THE STAHL HOUSE CASE STUDY HOUSE #22, BY SHERI GRONWELD. BRUCE STAHL, KIM CROSS; CHRONICLE BOOKS, 2021)

## MAKING IT A HOME

On a misty summer day in June 1960, the Stahls parked their Cadillac in their carport and slid open the glass door to meet the cool concrete floor. They spun around to take in the panoramic view of their new home.

The house shaped Bruce and Shari Stahl's childhood. They moved in when they were just toddlers. Their first-born, Bruce, would grow up "building a labyrinthine of blanket forts in the living room and waking up to blinding sunshine stabbing through the cracks between the blankets."

And every morning started with a routine of strapping a life vest over their pajamas and running across the concrete bridge over the pool to reach the kitchen. Sleeping in wasn't an option. "Living in a glass house, you didn't get to sleep in too late," Bruce remembers.

They would spend their days around the famed pool. Before long, the kids were amphibious and teaching Mark, the youngest, how to swim as well. The space became Carlotta's entertaining haven, the children's wonderland and Buck's pride.

While the Stahl house has boasted many exhibitions and film appearances, the Stahl family is nothing short of a marvel in its own right. After all, it's the *people* who make a house a home. 🌿



**Thoughtfully Designed &  
Built for Generations.**



Find the Solomon Console at [www.huntandnoyer.com](http://www.huntandnoyer.com)

## Custom HOME PORTRAITS



We all love the places we call home. We choose the colors, the furnishings, and the artwork that make our homes unique expressions of ourselves.

Let's work together to create a one-of-a-kind illustration highlighting what you love about your home!

*Get to know your home  
in a whole new way.*



**CHRISTIAN MUSSELMAN**

Illustration

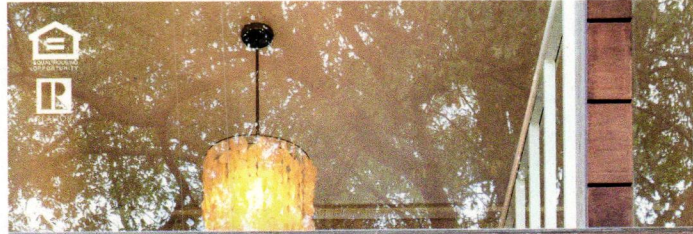
[christianmusselman.com](http://christianmusselman.com)

MODWALLS TILE  
LIVE YOUR COLORS



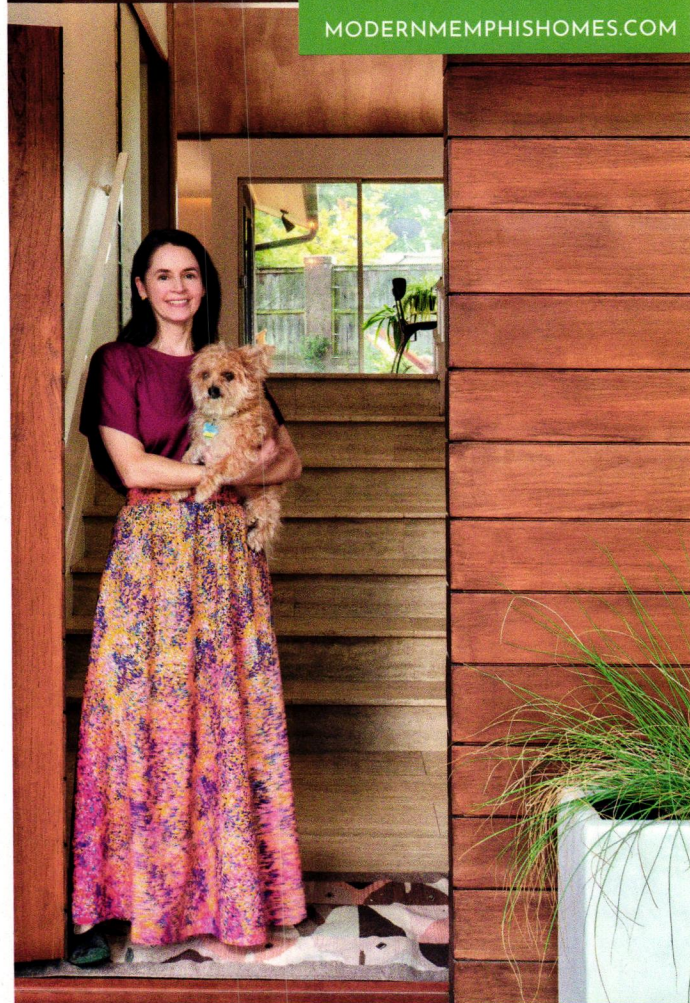
 **modwalls**<sup>®</sup>

modwalls.com / 877 439 9734



MODERN  
LIVES IN  
MEMPHIS

MODERNMEMPHISHOMES.COM



MARGARET MIKKELSEN  
modern memphis homes  
**CRYE-LEIKE**<sup>®</sup>, REALTORS<sup>®</sup>

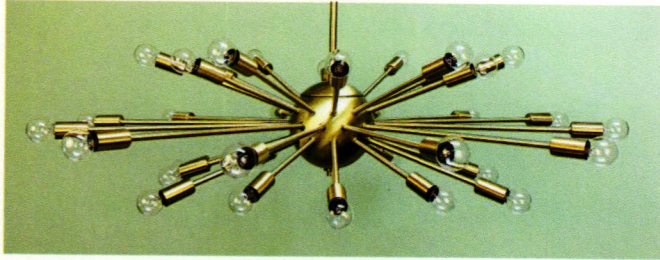
office: 901-754-0800

mobile: 646-898-6901

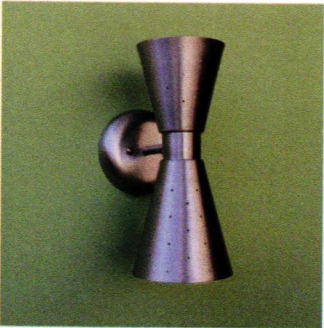
Serving Memphis, TN

margaret.mikkelsen@clhomes.com

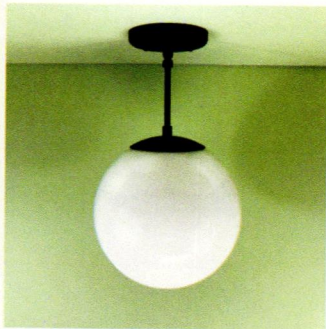
# Practical P R O P S



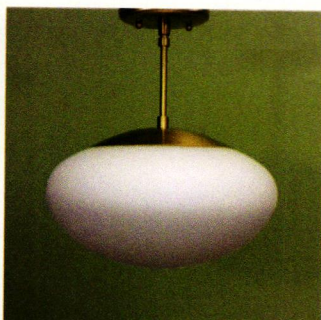
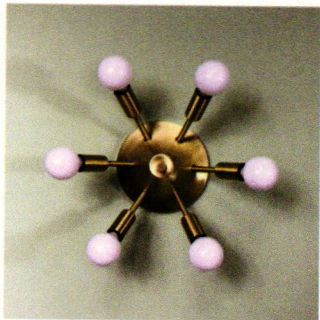
**Specializing in Authentic, Quality  
Midcentury Reproduction Lighting**



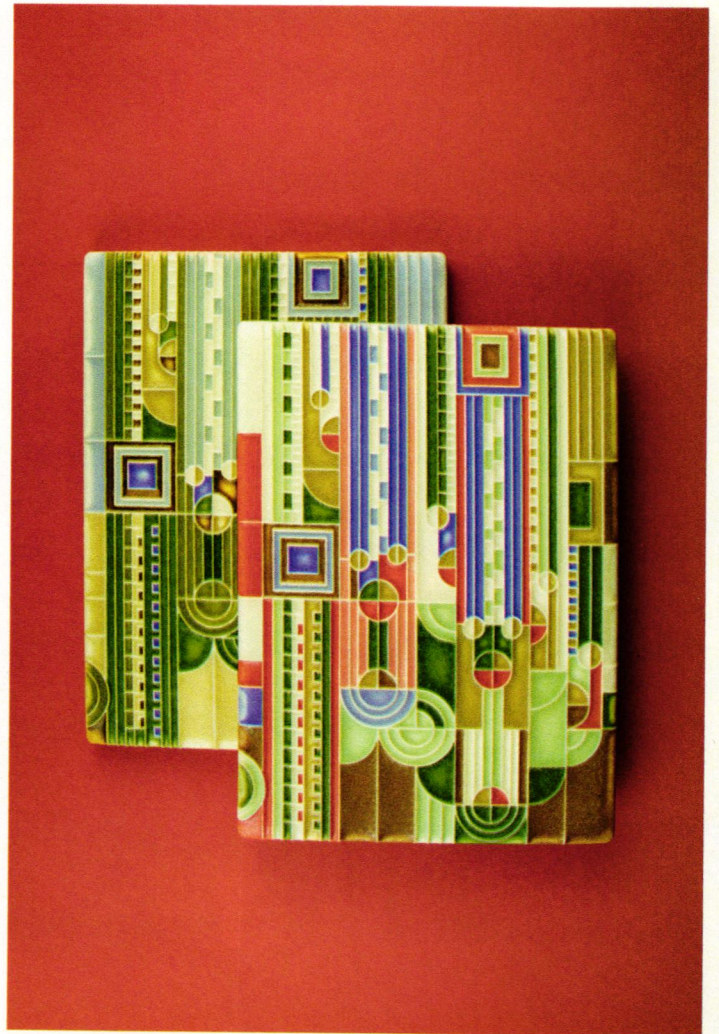
**Pendants - Sputniks - Flush Mounts  
Interior & Exterior Sconces  
Bath Lighting - Floor & Arc Lamps  
Desk, Table & Bedside Lamps  
Restored Vintage Lighting**



**Family-Owned & Operated since 1991**



**shop.PracticalProps.com**



FRANK  
LOYD  
WRIGHT<sup>®</sup>  
COLLECTION  
©/TM FLWF

**MOTAWI  
TILEWORKS**

DISTINCTIVE AMERICAN ART TILE  
FOR HOMES AND PUBLIC PLACES  
734.213.0017 | motawi.com



WHEN TEMPERATURES STOOD STILL IN THE 90S IN TEXAS DURING THE FIRST WAVE OF THE QUARANTINE, MEGAN PRIORITIZED FINDING A BUDGET-FRIENDLY OPTION TO COOL OFF. THE FIRST FEW STOCK TANK POOL DIYS WERE STARTING TO CATCH FIRE ONLINE, SO SHE INSTALLED HER OWN STOCK TANK POOL AS QUICKLY AS POSSIBLE. SHE IS STILL ENJOYING THE BENEFITS TWO YEARS LATER.



**ABOVE:** ARE YOU TRYING TO DECIDE ON THE SIZE OF YOUR STOCK TANK POOL? MEGAN OPTED FOR AN 8-FOOT STOCK TANK POOL TO PROVIDE ENOUGH SPACE FOR TWO PEOPLE ON FLOATING LOUNGERS OR 3 TO 4 PEOPLE, COMFORTABLY SEATED.

**BELOW:** YOUR STOCK TANK SETUP CAN BE AS UNIQUE AS YOUR HOME DESIGN. MEGAN'S ONE-OF-A-KIND, 12-FOOT AVOCADO SLICE POOL BAR WAS A LUCKY FACEBOOK MARKETPLACE FIND AT \$50.



DIY

Make a 'splash' on a budget with this upcycled idea.

Written and photographed by Megan Housekeeper

# Stock Tank Pool

**Picture yourself poolside** ... or, better yet, floating in your own private pool.

For most of us, this is a dream that resides exclusively within the frame of a Slim Aarons photograph. This vision might feel out of reach because of your space or budget. But, with a little DIY stock tank pool magic, I made this dream a reality, delivering private pool luxury for under \$1,000 in my Austin, Texas, backyard.

Stock tank pools, also known here, in the South, as "cowboy pools," have been a hot commodity for the past several summers as we've all spent more time making the most of our backyards. Made of galvanized steel, stock tanks are used for watering cattle and are designed to keep water cool on hot days. This makes it a perfect candidate to beat the heat on a budget.

The enduring DIY stock tank pool trend involves upgrading a 6-, 8- or 10-foot-diameter by 2-foot-deep stock tank from your local farm supply store by retrofitting it with an aboveground pool pump to filter the water and chlorine to keep it clean.

Are you ready to take the "plunge"? Here's what you need to know to create your own backyard oasis.

## SCOPE OUT YOUR SPOT

You'll need a flat, level surface that can support 700-plus gallons of water for a 6-, 8- or 10-foot-diameter pool that also has access to an exterior GFCI outlet for the pump. I surrounded my pool with pea gravel and used sand to level the area. Make sure your space is level by placing a level on a board the length of the stock tank pool.



**LEFT:** MEGAN STYLES HER BACKYARD WITH ACAPULCO CHAIRS FOR A RETRO-CHIC TOUCH THAT'S ALSO WELL SUITED TO THE OUTDOORS. THEY'RE MADE FROM DURABLE VINYL CORD.

**FAR LEFT:** ON EXTRA HOT DAYS, MEGAN BREAKS OUT HER MID-CENTURY FINKEL UMBRELLA, WHICH SHE FOUND AT LULA B'S IN DALLAS, TEXAS.

## INSTALLING THE PUMP

Break out your power drill, attach a 2¾-inch hole saw with an arbor and drill two holes for the pump fittings, side by side and 6 to 12 inches apart. (Don't forget to wear safety goggles when drilling and also clean up any sharp metal scraps.) If your hole saw is not precisely sized to your pump parts, you can add waterproof sealant to prevent leaking around your pump fittings after they have been installed.

Next, assemble the inlet and outlet fittings that are made for an aboveground pool. A few additional parts are required to supplement a standard pump kit, including an inlet strainer and an extra plunger valve.

On the outside of the pool, attach the plunger valves to your inlet/outlet, threading outside the nut; this will allow you to shut off the water flow when you need to change filters.

Finally, attach hoses to the plunger valves, connecting them back to the pump. This will keep the water moving in your pool and will help filter the water. Fill the pool gradually, checking that it's level. Adjust the level with sand as needed.

## KEEP CALM AND CLEAN ON

Keeping your pool clean and algae-free is the final—and most important—step to stock tank pool success.

### Consistency is key:

- Run your pump at least once every 12 hours.
- Add one to two chlorine tablets weekly.
- Use a pool skimmer for large debris.
- Test and adjust levels as needed.

These steps will keep your water clean and help prevent rusting. In addition, be sure to cover your pool to keep out larger debris; and always secure it for child safety.

## STOCK UP EARLY

As temperatures rise, so does the demand for stock tank pools. Scoop your supplies early in the season!

- CountryLine 8x2-foot Galvanized Round Stock Tank, \$599; [tractorsupply.com](http://tractorsupply.com)
- INTEX Krystal Clear Cartridge Filter Pump (1,500 gallons) for Aboveground Pools, \$120; [amazon.com](http://amazon.com)
- Inlet Strainer Kit, \$45; [Shop.stocktankpool.net](http://Shop.stocktankpool.net)
- INTEX Aboveground Plunger Valves With Gaskets and Nuts, \$60; [amazon.com](http://amazon.com)
- RANNB Bimetal Hole Saw Triangle Shank Hole Cutter Attachment (2¾ inches), \$8.78; [amazon.com](http://amazon.com)
- HYDROTOOLS BY SWIMLINE Chlorine Dispenser, \$10; [amazon.com](http://amazon.com)
- Clorox Pool & Spa Chlorinating Tablets, \$40; [lowes.com](http://lowes.com)
- Clorox Pool & Spa Chlorine Test Strips, \$12.98; [lowes.com](http://lowes.com)
- Evob Pool Skimmer Net, \$15.97; [amazon.com](http://amazon.com)

## STOCK TANK IN STYLE

Bring out your own style by customizing your stock tank pool with endless options. From custom-built seating surrounds to DIY hacks that heat your pool in the winter, you'll be able to make this budget-friendly luxury even more personal and worthwhile. 🌿

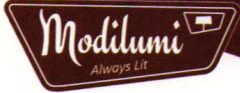


### About the Author

Megan Housekeeper shares her passion for vintage-inspired interior design on her social media accounts and blog, the Mid-century Millennial. She is currently renovating her 1970s ranch-style home and is designing a series of retro-styled rentals in Austin, Texas. Megan is a lifelong thrifter and an avid DIYer, so you can usually find her looking for treasure to upcycle.

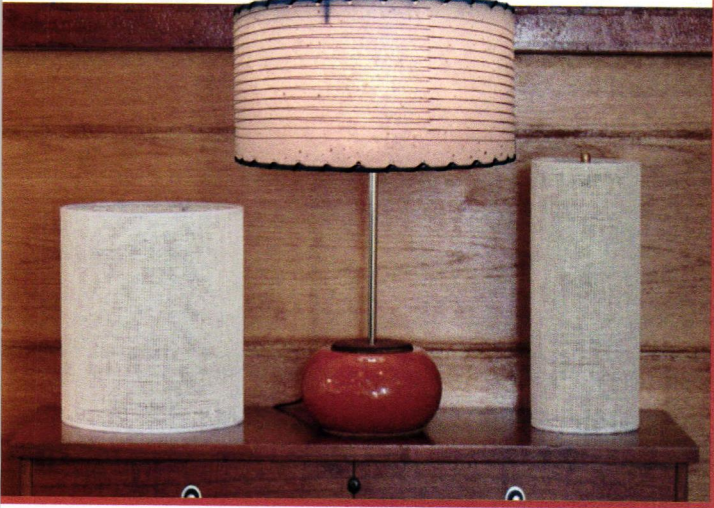


# Hand Crafted LAMP SHADES!



Custom Lighting  
From Atomic  
to  
Danish Modern

@ModilumiLighting  
www.Modilumi.com



Find a cool Mid-Century.  
Sell your Contemporary home.



Marisa Swenson  
MODERN HOME EXPERT



MODERN HOMES  
PORTLAND

971-285-7955  
Marisa@ModernHomesPortland.com  
ModernHomesPortland.com

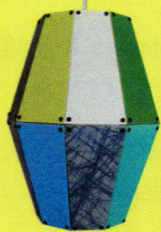
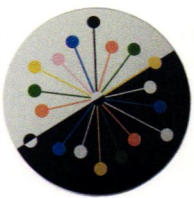
DWELL REALTY

Licensed OR & WA Broker



Hip Haven

RETROMODERN  
DECOR



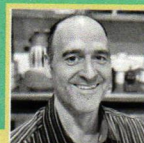
HIPHAVEN.COM

(512)462-4755  
info@hiphaven.com

Your Chicago-Area  
Mid-Century Modern &  
Ranch Homes Specialist



MODERN  
ILLINOIS  
modernil.com



Lou Zucaro  
lou@modernil.com • 312.907.4085

Baird & Warner  
754 W. Northwest Highway, Barrington, IL 60010



Your Home Deserves

# MID MOD

# INSPIRATION.



The trusted resource for mid mod design

Get a 1-year subscription to **Atomic Ranch** and **save 38%** on the combined cover price!

## ONLY \$29.95

Fill out the form below and mail it to: **Engaged Media LLC, PO Box 88761, Chicago, IL 60680-1761**

**YES!** Sign me up for a subscription to **Atomic Ranch \$29.95.**

(That's 6 issues for a \$17.99 savings on the cover price.)

Payment Method  Check Enclosed  Credit Card  Money Order  Bill Me

Payment Through Credit Card  Visa  MC  AMEX  Discover Name On Credit Card \_\_\_\_\_

Credit Card Number                      Expiration Date \_\_\_\_/\_\_\_\_/\_\_\_\_

Subscriber Name \_\_\_\_\_ First \_\_\_\_\_ Middle \_\_\_\_\_ Last

Address \_\_\_\_\_

\_\_\_\_\_ City \_\_\_\_\_ State \_\_\_\_\_

Phone ( \_\_\_\_\_ ) \_\_\_\_\_ - \_\_\_\_\_ Email \_\_\_\_\_

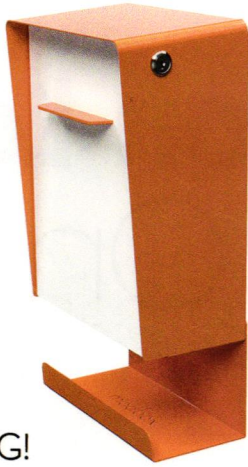
Signature \_\_\_\_\_ Date \_\_\_\_/\_\_\_\_/\_\_\_\_

Or, log on to [www.engagedmediamags.com/ar](http://www.engagedmediamags.com/ar) and use promo code **A12AR001** or call **800-764-6278** to order your subscription. Allow 6-8 weeks for delivery of first issue. Outside U.S., add \$22 per year for postage. Payment in U.S. funds only.

Scan QR code & pay online to get additional **discount** on offer price.



modboxUSA



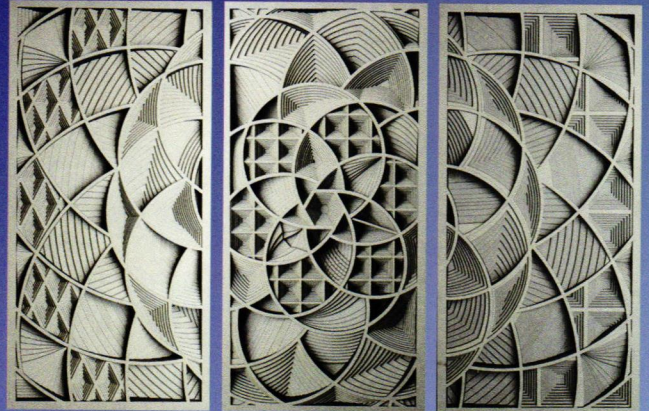
NEW  
LOCKING!



modboxusa.com | 919.322.0894

## Shadowtiles

Geometric panels constructed from layers of precision cut paper, wood or acrylic.



## Sempervivum A-B-C

The design is already there, hidden among the layers;  
I'm just the one who reveals it - Erich Meager

[erichmeager.com](http://erichmeager.com)

Custom and commission work available upon request

The **RadiantLight** Landscape Light Collection.  
Low voltage 12 to 15 volt AC or DC, LED landscape  
lantern that casts a shadow to light up your landscape  
and walkways. Two Sizes in four styles and colors.



Classic

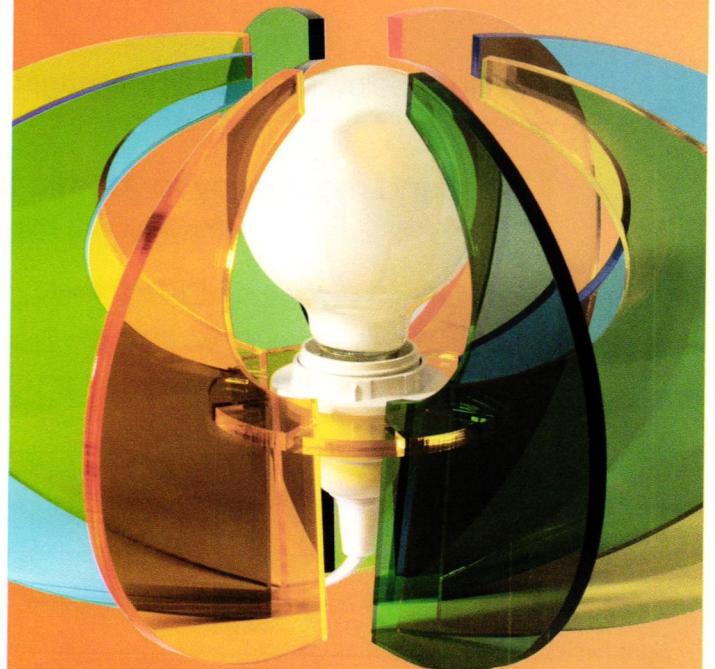
Polynesian

MidCentury

Modern

tedstuff modern.elegant.fun.  
[tedstuff.net](http://tedstuff.net)

## ASTROLUMA Space Age Lamps



[atomicmobiles.com](http://atomicmobiles.com)

secret discount code: AR10



REMCRAFT UP-DOWN LIGHTS  
Setting the standard...again.



(800) 327-6585

www.atomicremcraft.com



ANTHONY LAMORTE  
FURNITURE

Thoughtful, creative design.

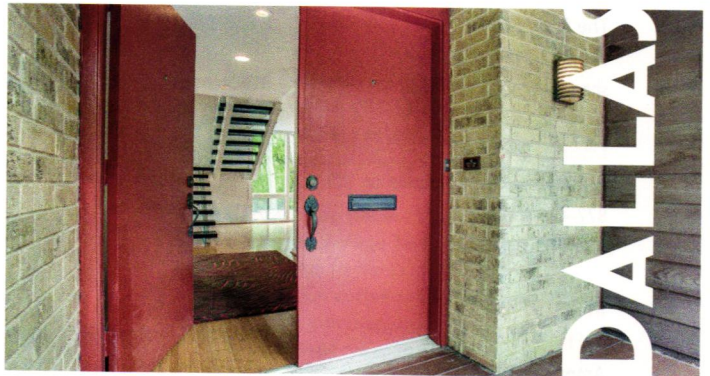
Creating custom furniture and artwork for over 50 years.



Julie chair... Designed by: Kim Franke and Tony Lamorte  
Built by: Anthony Lamorte Furniture

Made in Reno, NV  
Anthonylamorte.com  
775-772-8622

MODERN  
WELCOME



Yearning to find a **Mid-Century Modern** home?  
I can open doors for you. **Call me today.**

ED MURCHISON | 214.395.7151 | ed.murchison@cbdfw.com



GLOBAL  
LUXURY

COLDWELL BANKER RESIDENTIAL BROKERAGE

We've got the authentic  
retro materials to restore  
your mid-century home.

www.makeitmidcentury.com

Real estate agents affiliated with Coldwell Banker Residential Brokerage are independent contractor sales associates, not employees. ©2019 Coldwell Banker Residential Brokerage. All Rights Reserved. Coldwell Banker Residential Brokerage fully supports the principles of the Fair Housing Act and the Equal Opportunity Act. Owned by a subsidiary of NRT LLC. Coldwell Banker, the Coldwell Banker logo, Coldwell Banker Global Luxury and the Coldwell Banker Global Luxury logo are registered service marks owned by Coldwell Banker Real Estate LLC. 19K7U5\_DFW\_B/19

DIRECTV

# DON'T JUST KINDA TV **DIRECTV**



**CHOICE™ PACKAGE**  
**185+ Channels**

**\$79.99\***  
**MO.**  
For 12 mos. +  
taxes and fees.

W/ 24-mo. agmt. Prices higher in 2nd year. Regional Sports Fee up to \$11.99/mo. is extra & applies.

• **ACCESS 70,000+ SHOWS AND MOVIES ON DEMAND.**  
Requires subscriptions to top-tier PREMIER programming. Other packages will have fewer shows and movies.

• **DOWNLOAD YOUR DVR RECORDINGS** to your devices at home and watch offline anywhere.\*\*

• **THE MOST LIVE SPORTS IN 4K HDR.**  
Limited 4K HDR programming available. CHOICE Pkg or higher required for most 4K HDR live sports. 4K HDR compatible equipment, minimum programming, 4K account authorization and professional installation required. If 4K TV does not support HDR, content will be viewable in standard 4K. Other conditions apply.

**\*\$19.95 ACTIVATION, EARLY TERMINATION FEE OF \$20/MO. FOR EACH MONTH REMAINING ON AGMT., EQUIPMENT NON-RETURN & ADD'L FEES APPLY.** Advanced Receiver Fee (\$15/mo.) req'd for HD DVRs. \$7/mo. for each receiver and/or Genie Mini/DIRECTV Ready TV/Device on your account. New approved residential customers only (equipment lease req'd). Credit card req'd (except MA & PA). Restr's apply.



**SIGN UP AND GET DIRECTV AND GET FIRST 3 MONTHS OF  
HBO MAX, CINEMAX, SHOWTIME, STARZ AND EPIX INCLUDED!**

Access HBO Max only through HBO Max app or hbo.com. HBO Max also includes HBO channels and On Demand on DIRECTV. Online account registration required. Data rates may apply for app download/usage. **EARLY TERMINATION FEE OF \$20/MO. FOR EACH MONTH REMAINING ON AGMT., \$19.95 ACTIVATION, EQUIPMENT NON-RETURN & ADD'L FEES APPLY.** New approved residential customers only (equipment lease req'd). Credit card req'd (except MA & PA). [See offer details]

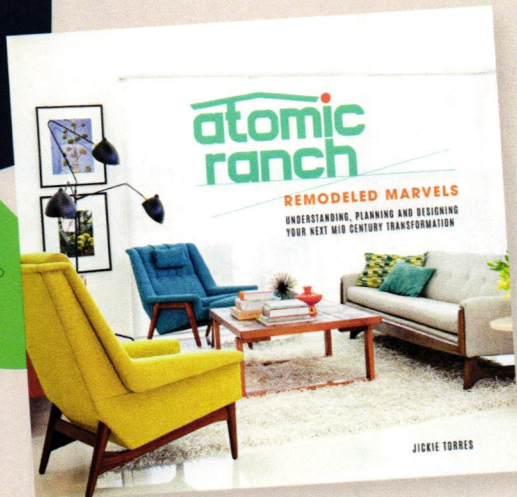
**Contact your local DIRECTV dealer!**

IV Support Holdings

**866.590.0160**



1-YR BASE PACKAGE: Ends 6/30/22. Available only in the U.S. (excludes Puerto Rico and U.S.V.I.). Pricing: \$79.99 for first 12 mos. only. After 12 mos. or loss of eligibility, then prevailing rate applies (currently \$84.99/mo. for ENTERTAINMENT; \$106.99/mo. for CHOICE; \$136.99/mo. for ULTIMATE; \$191.99/mo. for PREMIER unless cancelled or changed prior to end of the promo period. Pricing subject to change. TiVo service fee (\$5/mo.) req'd for TiVo HD DVR from DIRECTV. Additional Fees & Taxes: Price excludes Regional Sports Fee of up to \$11.99/mo. (which is extra & applies to CHOICE and/or M \$ ULTRA and higher Pkgs.), applicable tax expense surcharge on retail value of installation, custom installation, equipment upgrades/add-ons, and certain other add'l fees & chrgs. See directv.com/directv-fees for additional information. Different offers may apply for eligible multi-dwelling unit and telco customers. DIRECTV SVC TERMS: Subject to Equipment Lease & Customer Agreements. All offers, programming, promotions, pricing, terms, restrictions & conditions subject to change & may be modified, discontinued, or terminated at any time without notice. Some offers may not be available through all channels and in some areas. Visit directv.com/legal/ or call for details. Offers may not be combined with other promotional offers on the same services and may be modified or discontinued at any time without notice. Other conditions apply to all offers. 2022 DIRECTV. DIRECTV and all other DIRECTV marks are trademarks of DIRECTV, LLC. All other marks are the property of their respective owners.



## Want to Perfect Your Mid Century Backyard?

We wrote the remodeling mindset that works: tried-and-true styles for your patio, garden, and exterior.

Your remodel succeeds with the best means. The good news? You now have them in time for spring!

*Remodeled Marvels: Your Guide to Understanding, Planning and Designing Your Next Mid Century Modern Transformation*

Order your copy today at [atomic-ranch.com/merchandise/atomic-ranch-book](http://atomic-ranch.com/merchandise/atomic-ranch-book)



Official US distributor since 1945

## Replace broken or stretched Fagas Straps!

[www.fagasstraps.com](http://www.fagasstraps.com)  
[info@fagasstraps.com](mailto:info@fagasstraps.com) 858.461.8069

## THE STARBURST



Be informed,  
 be inspired,  
 be the first to know  
 what's going on  
 in the world of MCM!

Are you getting  
**The Starburst?**  
 Your weekly guide to  
 all things Mid Mod!

Sign up for the newsletter at [atomic-ranch.com](http://atomic-ranch.com)

## Would You Like To Be A Mid-Century Modern Antiques Dealer?

### You Can:

- \*Start your own Mid-Century Modern Antiques Business
- \*Choose the hours you wish to work
- \*Become a "Certified" Decorative Arts Appraiser
- \*Complete an internationally recognized 12 Volume Course with Diploma & Appraisal Certification (PACC & USPAP)



[www.asheford.com](http://www.asheford.com)

For A FREE Course Prospectus Booklet:

[www.asheford.com](http://www.asheford.com)

Email: [asheford@mail.com](mailto:asheford@mail.com)

Toll free: 877-444-4508

Or write to:

Asheford Institute: 981 Harbor Blvd.  
 Ste. 3, Dept. 275ATR24 Destin, FL 32541



“The Gateway to the West’

is a celebration of the western expansion of the United States and was conceived by Saarinen as a gift to the American people.”

## The Gateway to the West

What do iconic furniture, international airports and the world’s largest arch have in common? Eero Saarinen.

Written by Ian McMaster | Photo courtesy of Analog Stock

**Eero Saarinen, a Finnish-American architect and industrial designer,** is responsible for some of our favorite, most recognizable and longstanding Mid Century Modern designs.

His work with Charles Eames and the Knoll Furniture Company produced pieces that often grace the pages of our magazine; and the Tulip and Womb chairs have been an influence on all Mid Century Modern furniture since their production.

If you’ve ever been on one of the millions of flights going through Dulles International Airport or the TWA Flight Center at JFK International Airport, you’ve experienced an Eero Saarinen design firsthand.

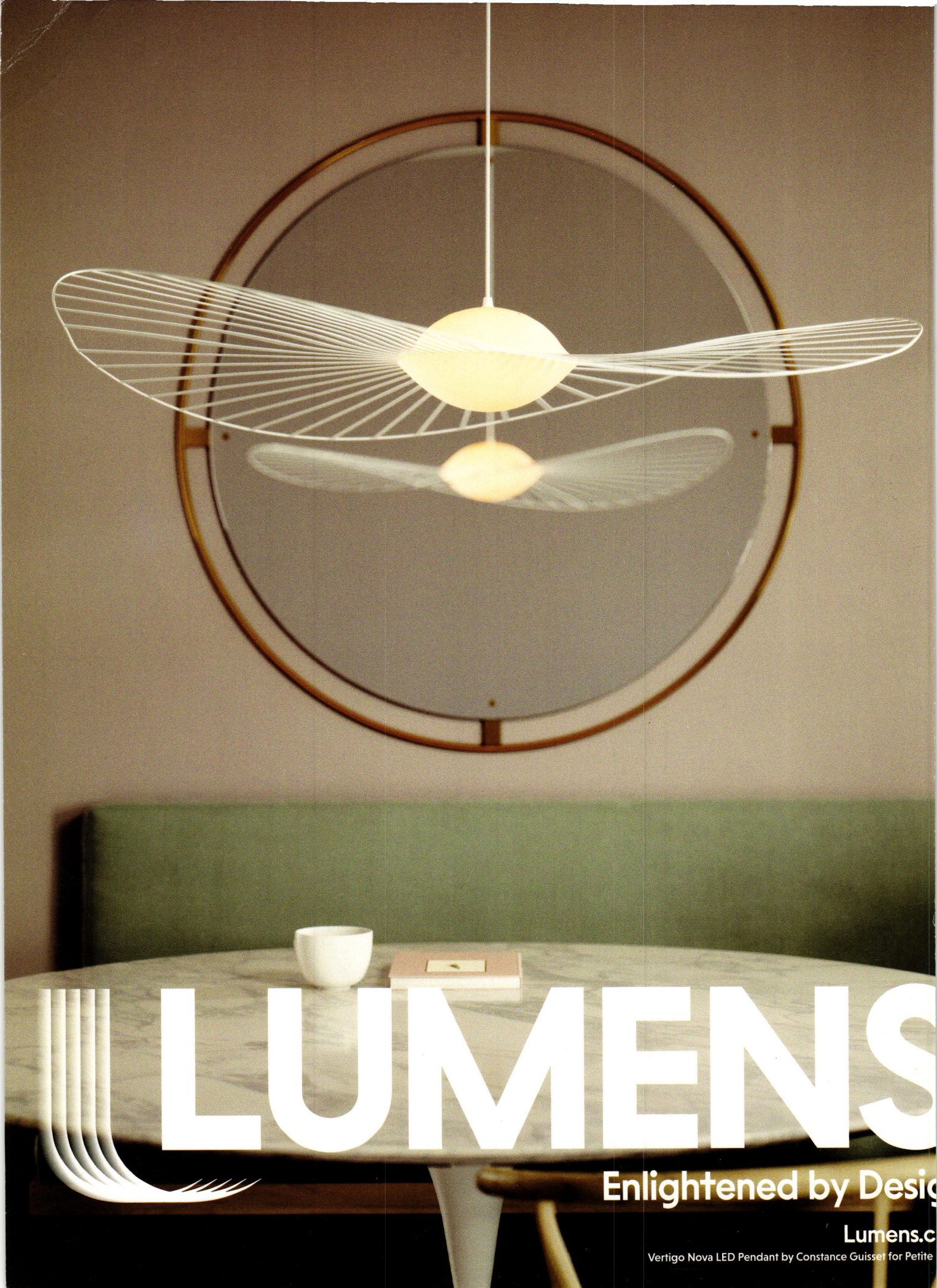
Nevertheless, The Gateway Arch, located in St. Louis, Missouri, and designed by Saarinen in 1947, is truly one of a kind. “The Gateway to the West” is a celebration of the western expansion of the United States and was conceived by Saarinen as a gift to the American people. Standing at 630 feet tall, it’s the world’s tallest stainless steel monument and arch. As an epic piece of architecture, Missouri’s tallest accessible building—and the first U.S. National Historic Landmark—The Gateway Arch is one of the most visited (4 million visitors annually) tourist attractions in the world.



A modern interior scene featuring a wooden shelving unit with a mirror, a potted plant, and a blue cushioned bench. The shelving unit is made of light-colored wood with a dark blue panel on the left side. A mirror is mounted on the unit, reflecting a kitchen area with wooden cabinets and a stainless steel oven. On the top shelf, there is a potted plant in a white ceramic pot with a dark pattern, sitting on a larger, textured brown ceramic base. To the right of the plant is a large, dark, rounded ceramic object. On the top shelf, there are several books, including one by Gabriel Garcia Marquez. The overall aesthetic is clean and contemporary.

# KERF

[kerfdesign.com](http://kerfdesign.com)  
plywood cabinets  
for the modern home



# LUMENS

Enlightened by Design

Lumens.com

Vertigo Nova LED Pendant by Constance Guisset for Petite