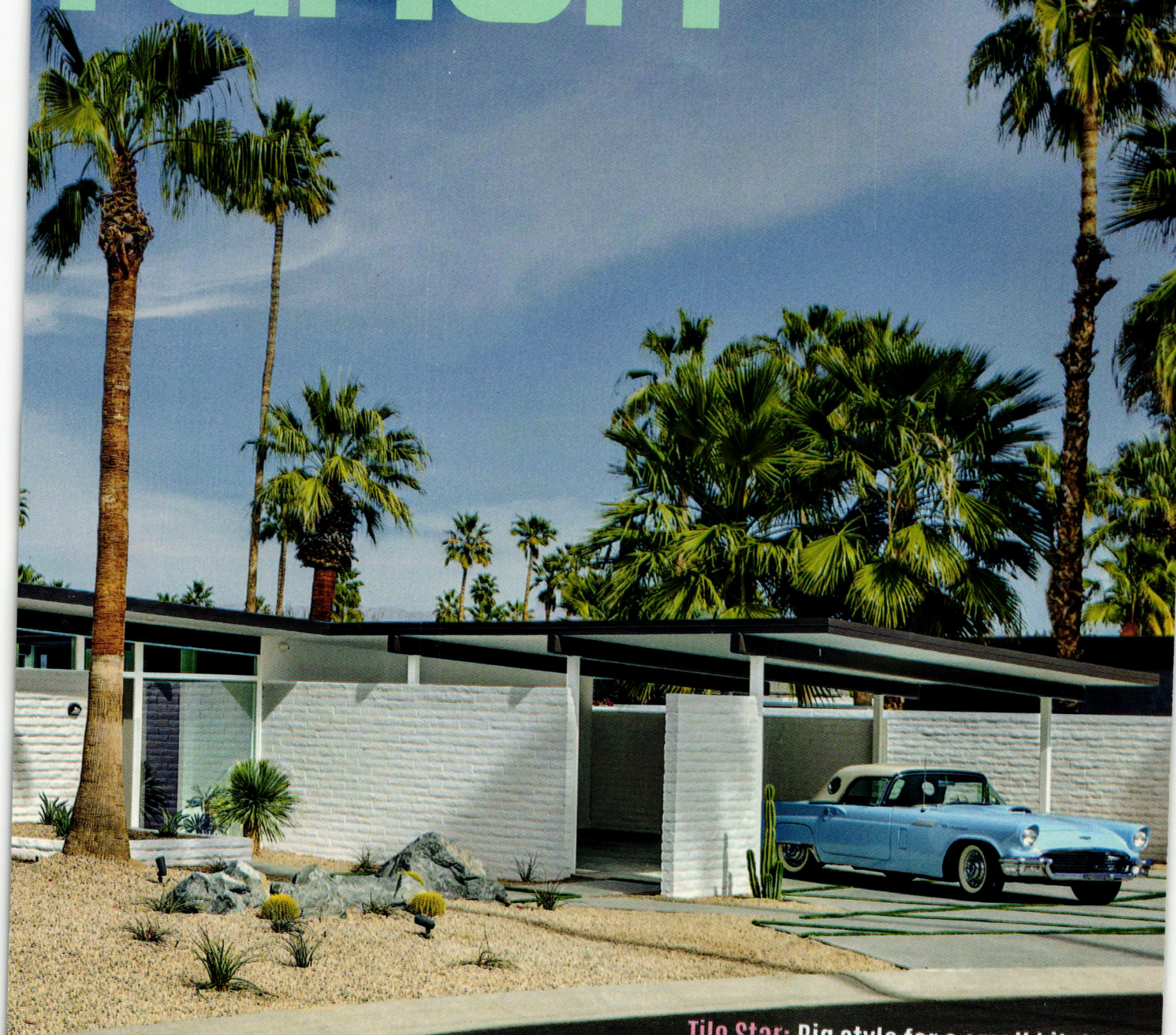


atomic

MID CENTURY MARVELS

ranch



Tile Star: Big style for a small kitchen

Preservation Power: Modernism Week's yearlong impact

Warming Trend: Retro elegance with natural wood features





GRUENE LAKE RANCH

Gruene Lake Ranch releases its next phase of short-term rental friendly cabins.

Featuring a 2-bed, 2-bath with bunk room, this A-Frame has all the style you've come to expect from our cabins.

Email us for more information:
sales@midcenturycommunities.com

GRUENELAKERANCH.COM



MIDCENTURY
CLASSIC AMERICAN LIVING

Conceptual Rendering

editor's letter



PHOTO BY MARK MENDEZ

RETURN MISSION

BOY, IT FEELS GOOD TO BE BACK... back behind the laptop for *Atomic Ranch* magazine and back in Palm Springs for Modernism Week. There's nothing like exploring the Mecca of Modernism to reinvigorate the modernist senses. Touring historic homes, and meeting and listening to design experts and homeowners who've brought their dream to life is business and pleasure in one for me. We're back at it with two events we're hosting for Modernism Week: We're hosting a tour with the fine fellows of H3K at their beautiful Hi-Sun House and we'll be throwing a live talk and shindig at the soon-to-be-unveiled Shag House! Of course, you have to stop by Atomic Avenue, our fabulously curated space of our favorite modernist vendors, makers and manufacturers at the Palm Springs Modernism Show. You'll want to be watching us on social media—we've got some fun special surprises and surprise guests who'll be making appearances. You won't want to miss it! I'm fortunate that I've made this pilgrimage twice a year for the past five years, but I hope our annual Palm Springs issue brings that experience home for anyone reading this who hasn't had the opportunity to attend.

This issue is filled with shining examples of Mid Century Modern design and architecture. We share the stories of these darlings of the desert so you can ooh and ahh, but also so you can glean insight for your own home-design projects. And our MCM-era experts will walk you through their design decisions to help you understand your options, your budget and how to navigate bringing your vision to life.

Thank you for joining us here for our special Palm Springs issue and let me know what you'd like to see in future issues!



Jackie Torres

Get connected!

Email: editor@atomic-ranch.com | Online: atomic-ranch.com | [@theatomicranch](https://www.instagram.com/theatomicranch)



Spring 2023 • No. 77

EG MEDIA INVESTMENTS LLC
Rima Dorsey: Managing Director/Publisher

EDITORIAL
Content Director and Brand Leader: Jackie Torres
Managing Editor: Meryl Schoenbaum
Associate Editor: Ian McMaster
Web Editor: Jolene Nolle

DESIGN
Design Director: Gabby Oh

CONTRIBUTORS
Lauren Hofer, Lindsay Jarvis, Autumn Krause, Iva Kravitz,
Michelle Mastro, Robert Maurer, Rabekah Henderson,
Erin Lawrence, Charles Winkler

CONTRIBUTING PHOTOGRAPHERS
Grey Crawford, Mike Schwartz, David Blank

ADVERTISING
Suzy Bailey: Account Representative
Julie Hale: Account Representative
Leslie Huddleston: Account Representative
Christina Walker: Account Representative
Sebastian Tirkey: Advertising Traffic Coordinator

OPERATIONS
Shailesh Khandelwal: Associate Director-Operations
Mohammad Danish: Assistant Manager-Subscriptions
Surajpal Singh Bisht: Prepress Manager
Chandan Pandey: Production & Newsstand Circulation Manager

EDITORIAL, PRODUCTION & SALES OFFICE
2222 Sedwick Road, Durham, NC 27713
(844) 330-6373, Fax (972-920-3737)
www.atomic-ranch.com

ATOMIC RANCH (ISSN 1547-3902) is published 6 times per year (Spring, Summer, Renovation Guide, Fall, Winter, Design Issue) by EG Media Investments LLC, 2222 Sedwick Road, Durham, NC 27713. Periodical postage paid at Durham, NC, and additional mailing offices.

POSTMASTER: Send address changes to *Atomic Ranch* c/o EG Media Investments LLC, ColorArt, 101 Workman Ct., Eureka, MO 63025. Canadian Post: Publications Mail Agreement #40612608. Return undeliverable Canadian addresses to: PITNEY BOWES, INC., P.O. Box 25542, London, ON N6C 6B2, Canada. GST #855050365RT001.

© 2023 by EG Media Investments LLC. All rights reserved. Reproduction of any material from this issue in whole or in part is strictly prohibited.

CUSTOMER SERVICE
EG Media Investments LLC
2222 Sedwick Road
Durham, NC 27713

SUBSCRIPTIONS, ADDRESS CHANGES, RENEWALS, MISSING OR DAMAGED COPIES AND FOREIGN INQUIRIES BOOKS, MERCHANDISE AND REPRINTS (844) 330-6373 subs@egmediamags.com customerservice@egmediamags.com

BACK ISSUES
<https://engagedmedia.store/>

LETTERS TO THE EDITOR, NEW PRODUCTS OR TO CONTRIBUTE A STORY OR PHOTO editor@atomic-ranch.com

SUBSCRIPTION RATES
\$29.95/1 year, \$52.95/2 years. Foreign, \$51.95 per year, \$96.95 per 2 years payable in U.S. funds.
Atomic Ranch single copy price is \$9.99;
Renovation Guide and *Design* issue price is \$10.99.
Please allow 6 to 8 weeks for new subscriptions to begin.

SIXSAILS GROUP
Scott Hall: Chief Executive Officer
Prashant Upadhyaya: President
Carrie Rubalcaba: Human Resources
Eric Asquith: General Counsel



This magazine is purchased by the buyer with the understanding that information presented is from various sources from which there can be no warranty or responsibility by EG Media Investments LLC, as to the legality, completeness or technical accuracy.

easy to clean | all season + all weather | awesomely sustainable

loll
DESIGNS

for the modern jollygagger



Are you an interior designer,
contractor, or landscape architect?
Join our trade program.
loll designs.com/trade

Designed + Made  in Duluth, Minnesota

Contents **Spring 2023**



48

HOUSE TOURS

24 Raising the Bar for a Timeless Renovation

Discover the surprising feature that inspired this complete home update.

36 Spinning the Color Wheel

See how this 1960s home in Rancho Mirage was renovated and revitalized with generous amounts of color.

48 Looking Through the Glass House

How an important Wexler home was given a new lease on life with a neutral palette.

60 Behind the Scenes

An MCM remodeling and construction expert transforms his California rental property into an inviting hub.

70 Tour for a Cause

A look at the widespread impact of Modernism Week.

FEATURES

16 Curb Appeal

The keys to the desert look.

18 Modern Makers

See how this artist is keeping the MCM look alive.

20 Atomic Kitchens

How to create a showstopping look with tile.

SHOPPING

12 Cool Stuff

Everything you need to recreate the Palm Springs poolside experience.

14 Period Picks

Design a gorgeous guest room.

DEPARTMENTS

4 Editor's Letter

10 Web Update

86 Resources

90 Last Look

cover

Cover photograph by David Blank

Cover design by Gabby Oh



24



ATOMIC RANCH (ISSN 1547-3902) is published 6 times per year (Spring, Summer, Renovation Guide, Fall, Winter, Design Issue) by EG Media Investments LLC, 2222 Sedwick Road, Durham, NC 27713. Periodical postage paid at Durham, NC, and additional mailing offices. **POSTMASTER:** Send address changes to Atomic Ranch c/o EG Media Investments LLC, ColorArt, 101 Workman Ct., Eureka, MO 63025. **Canadian Post:** Publications Mail Agreement #40612608. Return undeliverable Canadian addresses to: PITNEY BOWES, INC., P.O. Box 25542, London, ON N6C 6B2, Canada. GST #855050365RT001. © 2023 by EG Media Investments LLC. All rights reserved. Reproduction of any material from this issue in whole or in part is strictly prohibited.



GENERATION 4™

Folding Glass Walls by NanaWall

Drawing from four decades of innovation, NanaWall once again creates the most advanced family of folding glass walls.

Clean Aesthetics: The slimmest profiles available and minimal exposed hardware.

Flexible Stacking: Unique floating panel sets can stack either to the left or right.

Barefoot Friendly: Sill design offers weather resistance while maintaining a low-profile indoor-outdoor transition.

Easy Operation: Smoothest and easiest operation of any folding glass wall.

Secure & Durable: Air, water, and forced entry tested. Entry doors tested to 500,000 and folding panels to 20,000 open and close cycles.

Available in
three different
material choices:



ALUMINUM



WOOD



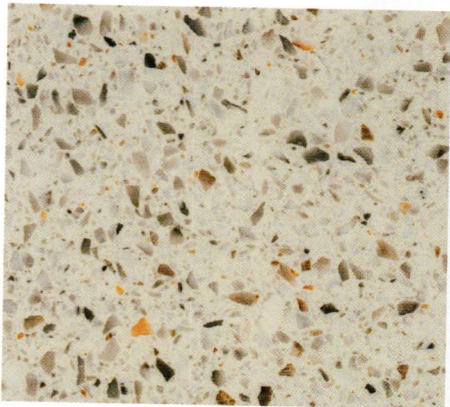
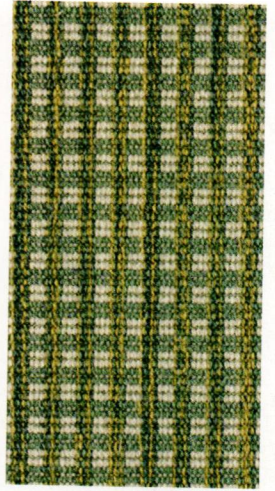
CLAD

NanaWall.com
800 873 5673

NanaWall[®]
Boundaries **Unbound**[®]



modfloors



2060 CA-111 Ste A, Rancho Mirage CA 92270 760-636-4135
hello@modfloors.com www.ModFloors.com

Keep Tabs on Us!

Find more MCM history, design and lifestyle inspiration at atomic-ranch.com



PHOTO: JIM BROWN

House Tour: Zippity Zook

Jay and Julienne tell their story of transatlantic romance with mid-century style and the 1952 Zook home they moved across the pond to call their own. Here, they relate the TLC the home needed to reach their long-anticipated vision.

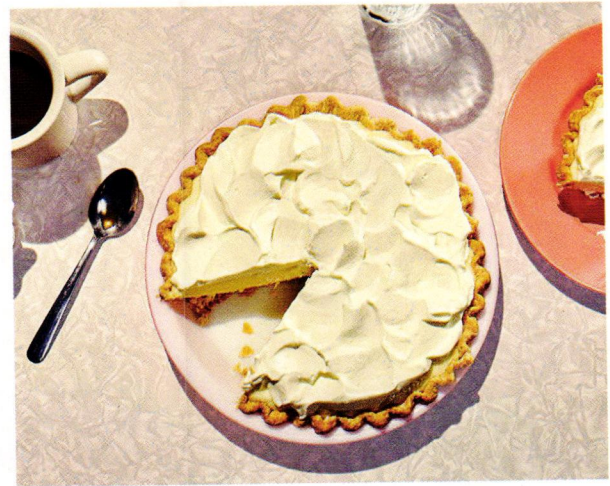


PHOTO: GETTY IMAGES

Vintage 1950s Recipe Revival

Ready for a taste down memory lane? Here are some classic (and yummy!) vintage 1950s recipes for you to cook and bake at home.

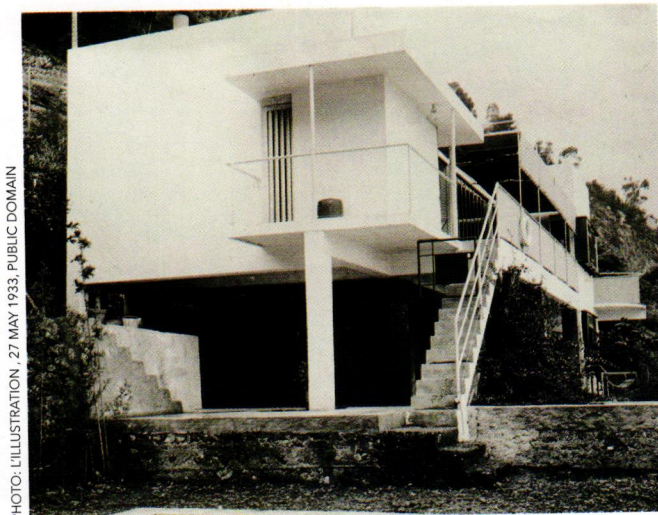


PHOTO: ILLUSTRATION, 27 MAY 1933, PUBLIC DOMAIN

Modernist Index: Spotlight on Eileen Gray

Eileen Gray became not only one of the leading modern-furniture designers of her generation, but also a successful modern architect.



Cool Stuff: Turquoise

Warmer months are just around the corner, and the sunnier it gets, the more we want to stay cool. Start prepping your ranch with some turquoise now and let the temperature start to rise!



Follow us online on [Facebook](https://www.facebook.com), [Instagram](https://www.instagram.com) and [Pinterest](https://www.pinterest.com) daily!

LOOK FOR THIS SYMBOL THROUGHOUT THE ISSUE TO SEE WHAT EXTRA CONTENT YOU'LL FIND ONLINE.

**MODERN
HOMES
REALTY**

JUST SOLD

THIS FRANK LLOYD WRIGHT HOME TO
BUYERS WHO LOVE THE ARCHITECTURE!



83 WISTERIA WAY, ATHERTON | \$6,300,000
3 BR • 2 BA • 1940 SQ FT • 42,224 SQ FT LOT

EMAIL ME FOR MORE INFORMATION!
INFO@MODERNHOMESREALTY.COM

MONIQUE ANTON

CEO, BROKER

Specializing in Mid Century Modern Architecture

650.380.5512 | INFO@MODERNHOMESREALTY.COM
www.MODERNHOMESREALTY.com

DRE# 01929739

101 JEFFERSON DRIVE, MENLO PARK, CA 94025

coolstuff

Cheers!

Palm Springs-inspired barware to fit any occasion.

By Ian McMaster

Scully and Scully luxury crystal colored whiskey decanter, \$425; (800) 223-3717 or scullyandscully.com



La Carafe wine opener, \$16; visit store.moma.org

Calder double Old-Fashioned glass, \$7.99; (312) 779-1979 or crateandbarrel.com



Atwell stackable ribbed highball glass, \$6.95; (312) 779-1979 or crateandbarrel.com

Mambo rectangular camtray, \$40; (760) 354-9154 or destinationpsp.com



Booze Blocks cocktail markers, \$20; visit mintydesign.com



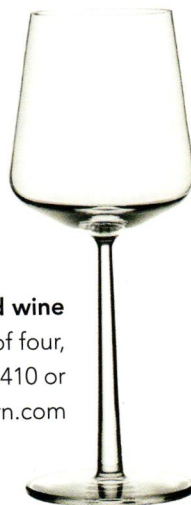
Classic ice bucket, \$49; visit store.moma.org



Sandstone coasters, set of four, \$40; (760) 354-9154 or destinationpsp.com



Essence red wine glass, set of four, \$88; (888) 222-4410 or 2modern.com



Barbell barware set, \$198; (888) 222-4410 or 2modern.com



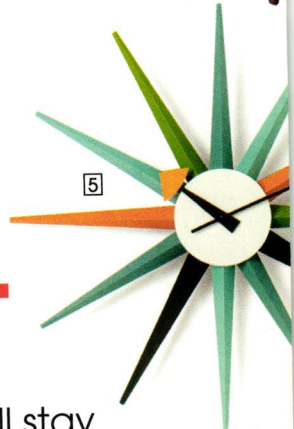
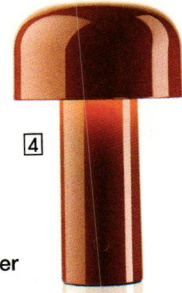
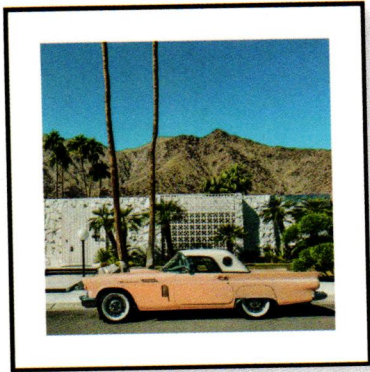


Palm
SPRINGS
Trailer Park

"Palm Springs Trailer Park" is available in fine art paper and canvas prints in several sizes.
Fine art, gifts, home goods, apparel and custom commissions by the artist Scooter.
Use Code: **ATOMICRANCH** to save 20% on regular prints and merchandise at: artofscooter.com

Scooter

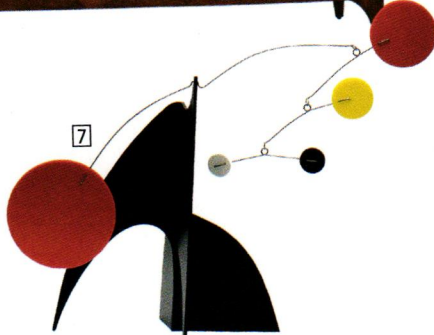
periodpicks



By Ian McMaster

Be Our Guest

Family and friends will stay over in style with these guest-room furniture and accessories pieces.



1. Mid-century modern sculpted walnut and brass floor lamp with accent side table, \$3,500; (323) 893-5950 or danishmodernla.com
2. Thunderbird at the Morse Residence fine art print, from \$44.95; for sizes, formats and pricing visit CARLV12.com
3. The Classic Daybed by Casara Modern, from \$1,899; (714) 317-9342 or casaramodern.com
4. Bellhop table lamp by E. Barber and J. Osgerby for FLOS, from \$325; visit lumens.com.
5. Nelson sunburst clock, from \$615; visit lumens.com
6. Mid-century modern "Brasilia" dresser by Broyhill; for pricing, (323) 893-5950 or danishmodernla.com
7. The Moderne Stabile by Atomic Mobiles, \$199; (323) 640-0003 or atomicmobiles.com
8. Milo Baughman reclining lounge chair and ottoman for James Inc., \$2,500; visit 1stdibs.com
9. Mid-century modern matching pair of chests, \$3,600; visit 1stdibs.com



DESIGN
COLLABORATIONS

GLASS WORKS • PUBLIC ART LANDSCAPE ARCHITECTURE

CAST GLASS :: LED FIXTURES :: GARDEN AMENITIES

HANDMADE by Margaret and Michael Joplin in Tucson, Arizona

MARGARET AND MICHAEL JOPLIN

have come together to enhance indoor, outdoor and public environments with glass. Using an age-old technique of lost wax casting, they create glass forms ranging in shape from jewel-like elements to large lit sculptural cairns. This husband and wife team have joined their backgrounds of the glass arts and Landscape Architecture to create tactile beauty for any environment. Made in USA.

Contact

Margaret Joplin, RLA

C: 520 271 6568

E: mjoplin@designcollaborations.com

Michael Joplin, Shop Director

E: mjoplin@designcollaborations.com

Studio

403 N. Sixth Avenue, Suite 157

Tucson, AZ 85705

T: 520 623 8068

designcollaborations.com



/design-collaborations



@designcollaborations

curb appeal



Sleeping Beauty

By Ian McMaster

Photos courtesy of H3K Home+Design

A 1963 Du Bois gets a facelift in Vista Las Palmas.

Common Architectural Terms

Here are two frequent terms that will likely come up in discussions with your architect.

EAVES

The part of the roof that meets or overhangs the walls of a home. Proper eaves are designed to keep interiors shaded during summer months, allow direct sunlight into the home in the winter and keep water clear of walls during rainfall.

ROOF-BEAM PROJECTION

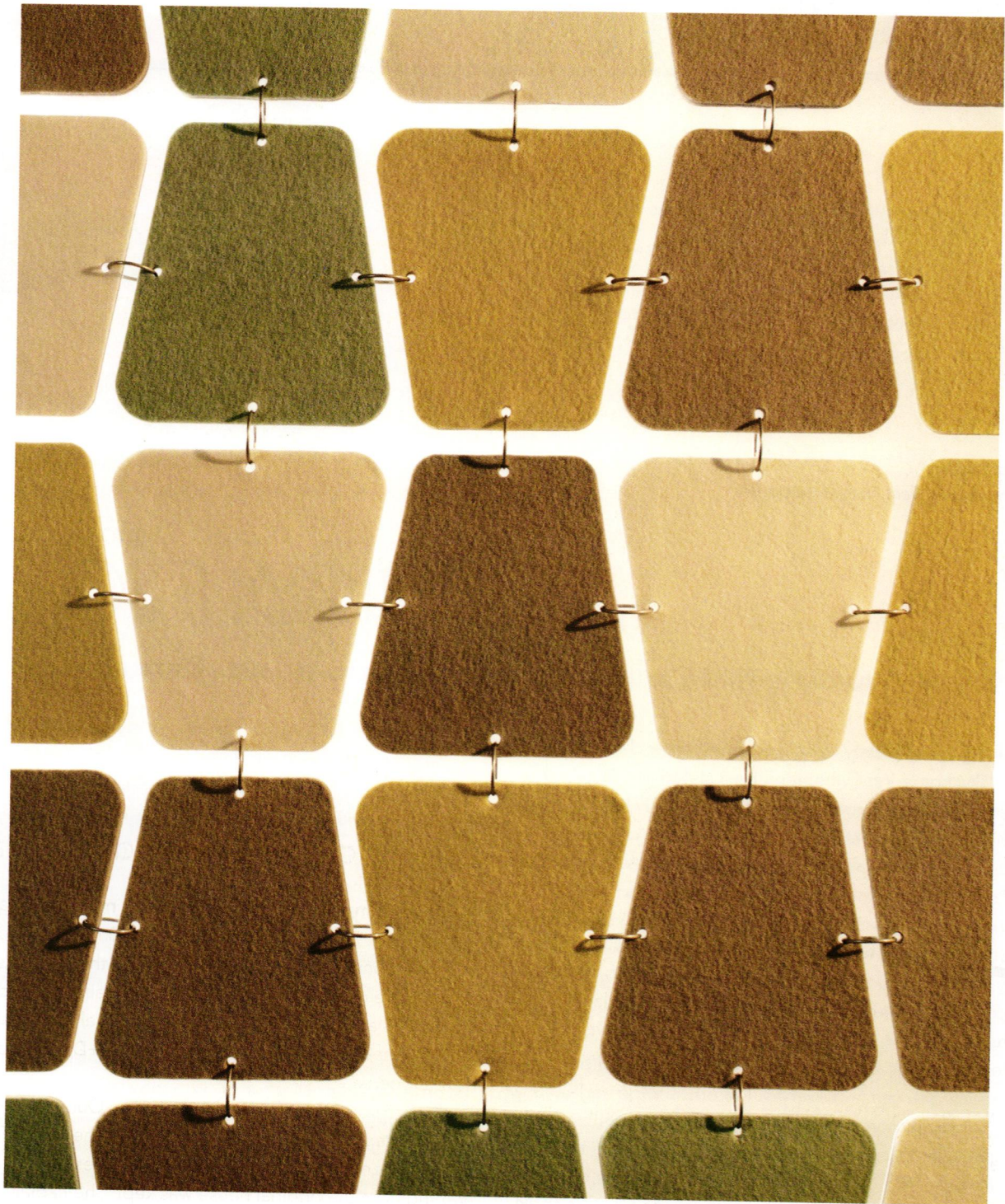
Exposed roof beams that extend out to, or beyond, the roof-edge framing. They can be load bearing, which supports the roof structure, or ornamental, which suspends from the roof.

Palm Springs is blessed with so many Mid Century Modern marvels, it can be hard for a home to truly stand out. But this ranch designed by Charles Du Bois and built in 1963 by the Alexander Construction Company does just that. With its lush green lawn, geometric landscape design and colors that pop against the incredible stone wall, this house has traffic-jam beauty. But the home hasn't always been so put together and had been somewhat hidden before H3K Home+Design was called in to make over the property.

"The front had been left overgrown and degraded over time. Our concept was to celebrate the MCM heritage of the house and really give the yard a Palm Springs oasis feel," says Kevin Kemper of H3K Home+Design. "Besides the existing older palms, nothing from the original house was kept," he explains.

The house was resurfaced, new paint was applied, the garage door was replaced, and new windows, fences and gates were installed. "We decided to use paint colors that contrasted with the various parts of the architecture—the stone wall, the beams jutting from the roof line, etc.," Kemper says.

The landscaping was also completely reimagined. A linear fountain directly in front of the stonework was added. "This not only helped create an oasis feel but creates wonderful dancing water shadows at night when the fountain is lit," Kemper says. For years, the house sported a gray-on-gray rock look, but the addition of lush green grass, a new driveway and a thoughtful geometric plant design breathe new life into this dream house. ☺



DIVVY SCREEN

submaterial

submaterial.com | new mexico, usa

modernmakers



By Ian McMaster

Photos courtesy of West Coast Modern LA

ABOVE, LEFT: THE "JONES" LOUNGE CHAIR IS MADE TO ORDER AND CAN BE CUSTOMIZED WITH YOUR CHOICE OF FABRIC AND COLOR. ABOVE, RIGHT: ONE OF WEST COAST MODERN LA'S MOST POPULAR DESIGNS IS THE "SULLY" CURVED SECTIONAL IN ORANGE TANG FABRIC.

Crafted in California

A father-son duo bring Mid-Century Modern design to the new century.

High-quality, gorgeously designed furniture is the final touch for any MCM home. And whether it be a statement piece or something that ties the room together, beautifully handcrafted furnishings is exactly what West Coast Modern LA provides.

This family-run company started with Luis Ramirez Sr. and son Luis Jr. buying and selling vintage pieces online and at local flea markets, with dreams to open their own store. In 2013, they did just that, opening up shop in Los Angeles and eventually building their own stunning furniture. "Our own designs focus on matching the same craftsmanship, quality and ability to stand the test of time as original MCM designs," Luis Jr. says.

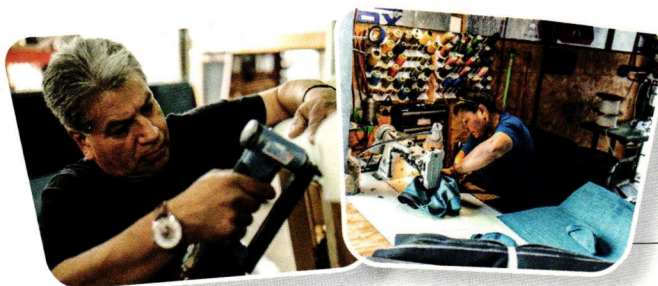
As West Coast Modern LA has grown, so have its offerings and locations. You can find everything from storage and seating to tables and bathroom vanities on the company's website, westcoastmodernla.com, and at the brand-new showroom in Rancho Mirage. "We continue to grow as a family business, working together when choosing new designs to fabricate. We also enjoy working with our clients on custom orders to make their design ideas come to life," explains Luis Jr.

"OUR NEWLY MADE DESIGNS ARE INSPIRED BY 1950S AND 1960S ICONIC DESIGNS," LUIS JR. SAYS. THIS CREDENZA IS AN HOMAGE TO THE BROYHILL BRASILIA SERIES.



The Ramirezes' passion for mid-century interiors has also taken West Coast Modern LA into the staging business. "We enjoy using a mix of true vintage pieces and newly made designs," Luis Jr. explains. Their work has been featured in iconic MCM homes by Wexler and Eichler. Says Luis Jr.: "From building a one-of-a-kind furniture piece to helping our customers design their home, we take pride in achieving a balance of quality, style and function at affordable prices."

"WE HANDCRAFT EVERYTHING IN-HOUSE, FROM FABRICATING FRAMES AND CABINETS TO UPHOLSTERY," LUIS JR. EXPLAINS.



TO SEE MORE FROM WEST COAST MODERN LA, VISIT WESTCOASTMODERNLA.COM OR FOLLOW THEM ON INSTAGRAM @WESTCOASTMODERN.

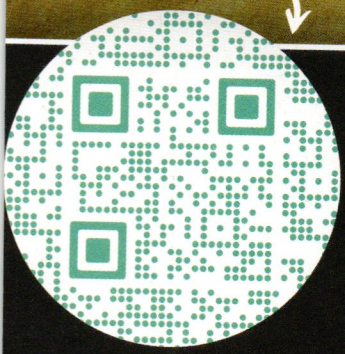


mid-century homes




By Anthology



SCAN FOR BOISE'S
BEST HOMES



WE MAKE **MID-CENTURY DREAMS** COME TRUE

   @boisemidcenturyhomes

atomickitchens



A GLASS CABINET DOOR CREATES VISUAL VARIETY. "SOME CLIENTS ARE ANTI-CLEAR GLASS BECAUSE THEY DON'T WANT TO BE ORGANIZED INSIDE THE CABINET, BUT BECAUSE THIS WAS USED AS A BAR CABINET AND THIS IS A VERY TIDY CLIENT, THEY DIDN'T MIND HAVING A LITTLE SEE-THROUGH AND A BREAK FROM OPAQUE," JENNIE SAYS. "IT JUST ADDED A LITTLE MORE INTEREST. THE INSIDE IS FINISHED TO MATCH THE ISLAND, SO IT JUST GAVE A LITTLE MORE FURNITURE-LIKE ASPECT TO THE CABINETRY."

By **Marissa Moldoch**
Photography by **Mike Schwartz**

A Happy Place

With a main course of mid century style and a dash of color, this remodeled kitchen became the icing on the cake of a dream vacation retreat.

When Jennie Bishop, Melissa Benham and Kristen Ekeland, principals at interior design firm Studio Gild, were contacted by one of their favorite clients about a heading up a special project, they sprang into action.

"Our clients of the last 10 years and several other notable projects purchased this 1975-build before we began working together in 2012," says Jennie, who served as the lead principal on the remodel. "They wanted to refresh it as their beloved vacation home in Rancho Mirage, California, minutes from Palm Springs."




modernism week
 Official Modernism Week Sponsor

Hi-Sun - Modernism Week 2023 Featured Home



Shop our showroom or online for fab furnishings!

H3K HOME + DESIGN

501 South Palm Canyon Drive
 Downtown Palm Springs
 (760) 325-5400
www.h3khomeanddesign.com



Founders
 Howard Hawkes & Kevin Kemper



ABOVE RIGHT: "NINE TIMES OUT OF TEN—IF NOT TEN TIMES OUT OF TEN—WE HIDE THE REFRIGERATOR, MEANING WE PANEL IT SO THAT IT GOES AWAY," JENNIE SAYS OF THE DESIGN DECISION THAT HELPS GIVE THIS KITCHEN ITS CLEAN LOOK. ON THE OTHER HAND, THE DESIGN TEAM PUT HARDWOOD FLOORING ON THE CEILING, A NOTABLE FEATURE TO ADD WARMTH AND BALANCE THE CONCRETE FLOORS.

ABOVE LEFT: TERRAZZO TILES AND A PUNCHY CORAL COLOR CREATE A PLAYFUL DYNAMIC WHILE BALANCING WITH THE BRIGHT WHITE AND STAINED OAK. THE LEATHER CABINETRY HANDLES ADD TEXTURE AND CAN ALSO BE SPOTTED ON THE LIVING ROOM MILLWORK. "THE RANGE HANDLES WERE A HAPPY ACCIDENT, TO COIN A BOB ROSS PHRASE," JENNIE SAYS. "THEY COME IN BLACK, BLUE OR RED. I DON'T KNOW AT THE TIME WHEN WE ORDERED APPLIANCES IF WE KNEW THE COLOR OF THE SURROUND, BUT THAT'S JUST ONE OF THOSE THINGS THAT FALLS INTO PLACE."

Although the clients had taken care of the 2,600-square-foot ranch, they hadn't made any substantial changes. Knowing they had their work cut out for them, the team decided to complete the project in two phases. "We updated the furniture a couple of years before the renovation, then came back in and did the renovation," Jennie explains. Since the principals know the clients so well, she says it was an easy, seamless project. "They trusted us and wholly embraced our mid-century, fun, whimsical vision for the house."

RENOVATION GOALS

The team gutted the home and transformed it from top to bottom, both indoors and outdoors. Because the client loves to cook, the kitchen remodel was one of the main priorities. "When you walked in, there was a powder room and a closet blocking the kitchen from the rest of the space," Jennie recalls. "The home's entry was laid bare so the new kitchen could be more gracious, cohesive and inviting. We removed that powder room and relocated it to the other side of the house, got rid of the closet and opened the kitchen and dining areas to the family room."

Besides the awkward layout, the home also had "very dated, white, high-polished tile in every room," Jennie says. "We ripped all of it out and replaced it with a matte concrete flooring throughout, which gave the home a casual and indestructible edge."

VACATION VIBES

This wasn't the client's primary residence. "That's the reason to love a client's second home: they're just a little bit removed and a little bit more 'get it done so I can use it,' and you can really do fun stuff," Jennie says. "They wanted cool, casual living and a little Palm Springs funkiness. We could be less serious and really make it a vacation destination. We don't do that many quirky, whimsical kitchens and this was a fun experiment, but I don't think it's anything risky for the location. This flavor has lasted and been around for a long time, and I don't see Palm Springs changing its tune and becoming something else. For the location, this kitchen is classic. In general, for the world, it's a little trendier. It's a happy place." 🌿

/ THE RIGHT FIT /

Not all that glitters is gold when it comes to kitchen trends. Jennie Bishop of Studio Gild discusses the pros and cons of popular design elements to help you decide what is right for you.

- **BALANCING SIZE AND FUNCTION.** Although the clients would have loved a 60-inch range in the spacious, functional kitchen, they had to settle for 48 inches. "We just couldn't do it because we would've made the side cabinets too small," Jennie says.
- **HEIGHT RIGHT.** Although many designers praise full-height backsplashes, Jennie usually advises against them. In this home, "the height of the backsplash is the hood height, so roughly 33 to 34 inches off the counter. If it had gone to the ceiling, it would have been angled. This way, we avoided a bunch of intersections."
- **SPACE CONSCIOUS.** While most homeowners would be hard-pressed to argue about additional storage, sometimes closets are the best place to cut to improve flow and floor plan. In this home, Jennie got rid of a closet to open the kitchen and dining areas to the family room.

Day and night in Palm Springs



Above: "The Mammoth Martini," a new 17 color silk screen edition.

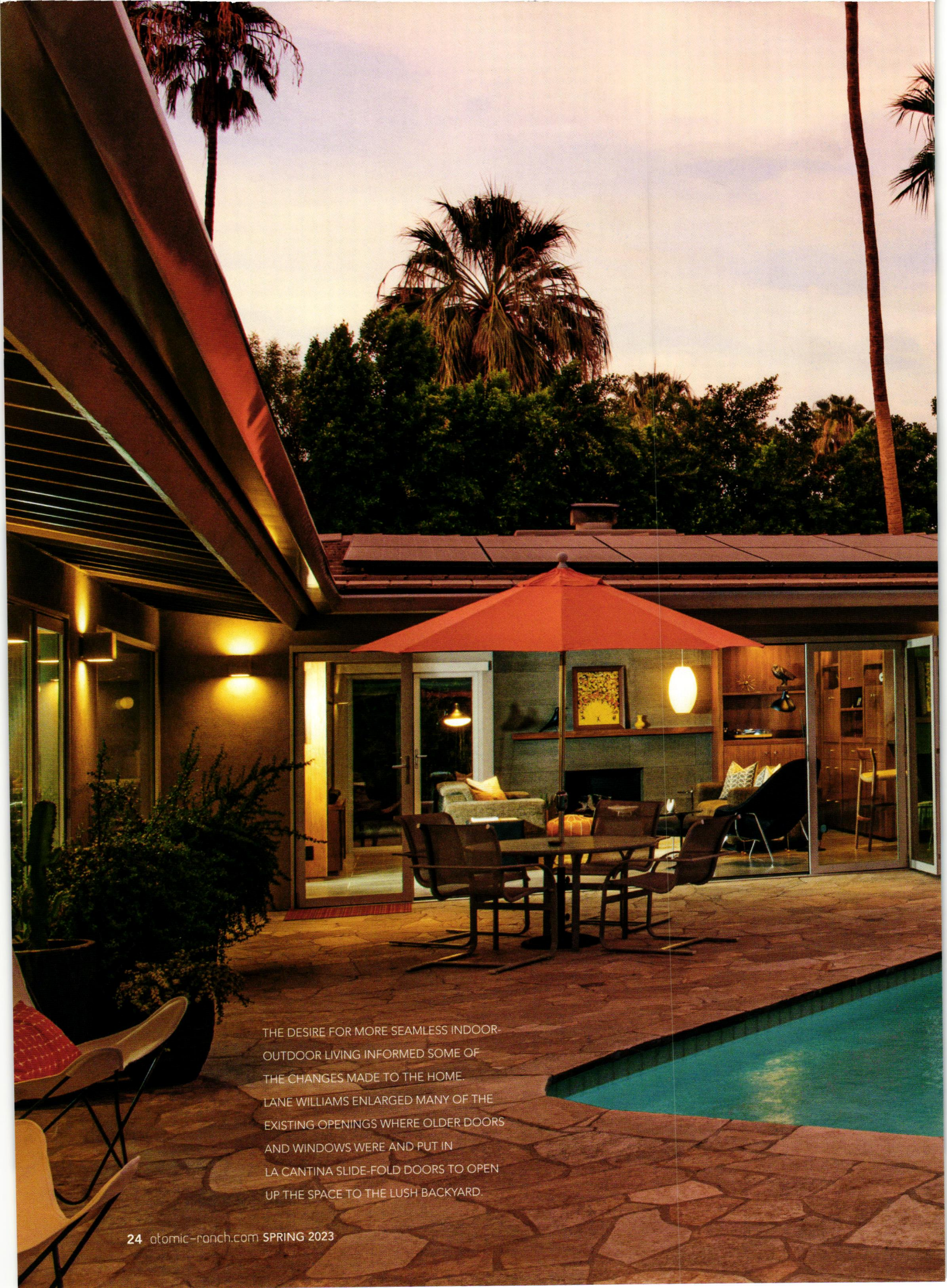
Below: "The Incognitos," a new 20 color silk screen print edition.



FINE ART, BOOKS, GIFTS AND APPAREL BY THE ARTIST SHAG

PALM SPRINGS: 745 North Palm Canyon Drive • LAS VEGAS: 4321 W. Flamingo Rd. (in the Palms Casino)

shagstore.com



THE DESIRE FOR MORE SEAMLESS INDOOR-OUTDOOR LIVING INFORMED SOME OF THE CHANGES MADE TO THE HOME. LANE WILLIAMS ENLARGED MANY OF THE EXISTING OPENINGS WHERE OLDER DOORS AND WINDOWS WERE AND PUT IN LA CANTINA SLIDE-FOLD DOORS TO OPEN UP THE SPACE TO THE LUSH BACKYARD.

RAISING THE BAR FOR A TIMELESS RENOVATION

A wet bar inspires a complete home update.

By Erin Lawrence | Photography by Dan Chavkin





WHILE SOME HAVE DECLARED THAT THE OPEN FLOOR-PLAN DESIGN is dead, architect Lane Williams says it isn't going anywhere.

"The open plan is alive and well," Williams says. "Most clients still ask for what is often described as the great room."

Lane Williams Architects (lanewilliams.com) recently finished the renovation of a 1952 mid-century home in the historic Old Las Palmas neighborhood in Palm Springs, California, and the homeowners wanted to ensure that while it was modernized it also had the right bones for entertaining. Williams didn't have to look far for inspiration.

"The Mid Century Modern designs were timeless, especially in Southern California, where you had architects like Richard Neutra and Rudolph Schindler doing some incredibly forward-thinking designs that still look amazingly modern by today's standards," Williams says.

The homeowners live in Palm Springs year-round, and while the locale is a popular winter escape, summers there can be extremely hot. Part of Williams' challenge was to ensure the 2,600-square-foot, single-story home was comfortable and appealing all year, leading to some less glamorous, but critically important, decisions.

"The house had to be comfortable, even if the temperature outside was 115 degrees outside, so for those situations we try to get as much insulation as we can as well as the highest-efficiency systems everywhere," Williams explains. "We added photovoltaic panels on the roof so that they're generating most of the electricity [the homeowners] need. In terms of being forwardthinking today, it's about how to reduce our carbon footprint by making the house more energy-efficient, and that sometimes requires some design compromises and it certainly requires a pretty healthy investment in upgrading insulation, upgrading windows and doors, and upgrading mechanical systems for heating and cooling."



LEFT: EFFORTLESS ELEGANCE WAS ACHIEVED IN THE OPEN LIVING/DINING AREA BY USING SIMPLE, CLEAN LINES. THE FLOOR TILE IS 24-INCH BY 48-INCH PORCELAIN WITH A DISTRESSED CONCRETE FINISH, WHILE THE FIREPLACE FACING IS ETCHED BASALT TILE FROM SOLI. THE WALNUT-WRAPPED SUPPORT WRAPPED BEAM WAS CLAD TO TIE IN WITH THE REST OF THE CABINETRY.

RIGHT: A STUNNING ROW OF WRAPAROUND WINDOWS PROVIDES AMPLE LIGHT AND GARDEN VIEWS FOR THE OWNER'S HOME OFFICE, LOCATED JUST OFF THE PRIMARY SUITE. THE WINDOWS ARE ORIGINAL TO THE HOME. WILLIAMS SAYS THIS SPACE WAS LEFT MOSTLY UNTOUCHED.



KEEPING IT CLASSIC

One of the biggest challenges with any mid-century renovation or restoration is to find the perfect balance between paying homage to the era and not leaning too far into kitsch. For Williams, there was never any danger of things turning kitschy, since his preference is for what he calls 'timeless design.'





OPPOSITE: THE WET BAR WAS THE INSPIRATION FOR THE RENOVATION. THE HOMEOWNERS HAD PREVIOUSLY UPDATED THE SPACE WITH WALNUT CABINETS AND A QUARTZ BAR TOP TO CREATE AN ERA-APPROPRIATE LOUNGE AREA THAT WILLIAMS SAYS HAS BEEN ONE OF THEIR FAVORITE FEATURES OF THE HOME. IT WAS USED TO SET THE TONE FOR THE REST OF THE HOME.

TOP: WILLIAMS DREW THE PLANS FOR THE KITCHEN BY HAND AFTER SEEING THE WET BAR. "IN FACT, THE CABINET MAKER WORKED FROM MY HAND-DRAWN ELEVATIONS OF THE CABINETS WHEN HE WAS DOING HIS PART OF THE WORK," WILLIAMS SAYS.





TOP: THE LIVING-AREA CEILINGS ARE HEMLOCK TONGUE-AND-GROOVE WITH WALNUT BEAMS BY MESA MILLWORK. WILLIAMS ENLARGED THE LIVING ROOM'S OLDER DOOR OPENINGS TO THE YARD TO CREATE A SEAMLESS SPACE THAT FLOWS NATURALLY FROM INDOORS TO OUT.

"I think it's important not to let nostalgia rule every decision," he says. "One of the reasons so many people appreciate Mid Century Modern homes is because those designs, dating back to the 1930s and '40s in many cases, were very forward-thinking for their day. Some of those designs did have open plans."

RENOVATION INSPIRATION

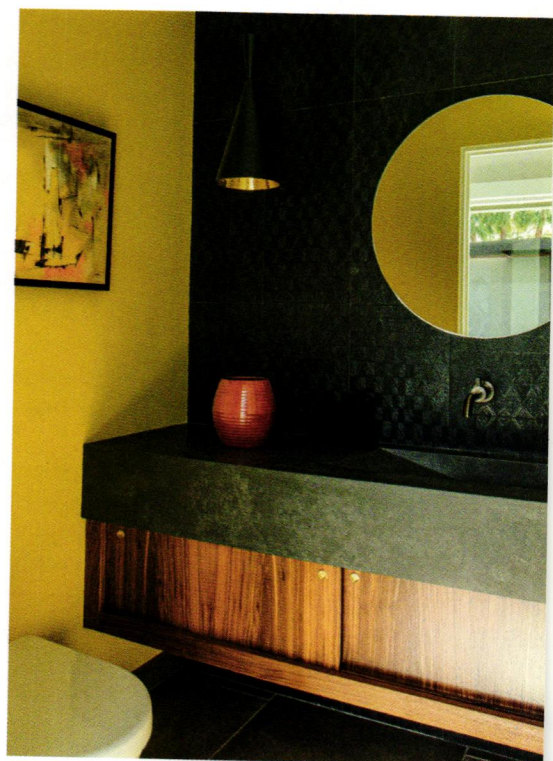
Williams took further inspiration for the renovation from the homeowners' favorite feature: a small wet bar they had recently upgraded with floor-to-ceiling custom black American walnut cabinetry and a Caesarstone quartz countertop. The same walnut cabinets were planned for the kitchen, but to avoid wood overload Williams opted to lighten the home's aesthetic in other ways. While beams supporting the roof were wrapped in wood veneer, Williams decided to paint the ceilings white.

OPPOSITE, TOP LEFT: TRIANGULAR CLERESTORY WINDOWS ARE AN ORIGINAL ELEMENT OF THE HOME. WILLIAMS USED SIMILAR SIZE AND SHAPE OPENINGS ELSEWHERE IN THE HOUSE TO CREATE A SENSE OF UNITY, PARTICULARLY IN THE ADDED GUEST WING. WALL COLOR THROUGHOUT THE HOME IS CRUSHED ICE BY SHERWIN-WILLIAMS.

OPPOSITE, TOP RIGHT: WILLIAMS DIDN'T MAKE MANY STRUCTURAL CHANGES TO THE HOME, BUT HE DID CREATE LARGER OPENINGS FOR SOME OF THE WINDOWS TO ALLOW MORE LIGHT INTO THE SPACE AND TO BLUR THE LINE BETWEEN INDOORS AND OUT—A HALLMARK OF MIDCENTURY DESIGN AND ARCHITECTURE.

OPPOSITE, BOTTOM LEFT: THE PRIMARY BEDROOM'S WALL OF FROSTED GLASS BIRCH WARDROBES WERE ADDED ABOUT EIGHT YEARS EARLIER AND ARE MEANT TO TIE IN WITH THE SUITE'S HEYWOOD-WAKEFIELD FURNITURE. THE DOOR (AND ORIGINAL TRIANGULAR TRANSOM-TYPE WINDOW) LEADS TO THE HOME OFFICE, WHICH THE OWNERS HAVE DUBBED THE GARDEN ROOM.

OPPOSITE, BOTTOM RIGHT: A SIMPLE POWDER ROOM IS GIVEN A MOODY MAKEOVER FROM A CAESARSTONE QUARTZ COUNTERTOP WITH INTEGRATED SINK AND DRAMATIC ANNE SACKS TILE. THE YELLOW PAINT ON THE WALL IS LEMONADE BY CLARE AND REMINDS VISITORS THEY'RE STILL IN SUNNY PALM SPRINGS.



The owners had the benefit of living in the home for a while before deciding to renovate, and Williams says that allowed him to determine what they both wanted and needed from the space. From those conversations the need emerged to add a few hundred square feet to the south wing of the home, creating an additional bedroom and en suite. The owners' children like to visit, and the guest space provides both proximity and privacy.

IN WITH THE OLD

Must-keeps in the renovation of a Mid Century Modern home.

It's all too easy to gut an older home and start fresh when renovating, but often original elements add not only authentic charm but modern-day value.

Steven Shields of Shields Residential in Palm Springs, California, was in charge of the construction for this remodel with Lane Williams. Shields suggests first ensuring that any original elements you want to keep are up to the task of existing in a modern-day home. When it comes to updating vintage countertops, Shields advises ensuring any original cabinets supporting them are strong enough and well-made enough to withstand the work involved in a changeover and that they can support the weight of natural stone, for example.

When it comes to renovation or restoration, Shields likes to think of this work as "remastering." In much the same way original Beatles recordings can be enhanced and refreshed by today's audio technology while still maintaining the original fidelity, so too can mid-century homes become more modern while maintaining their character.

SHIELDS SHARES MORE ADVICE FOR REMASTERING MCM HOMES:

- Look at what you can restore or return to its original glory, things like original wood paneling, original woodwork or stone.
- What you can't save, reimagine. Take inspiration from the era by looking at other homes in your area.
- Modernize smartly and take advantage of today's technology and construction innovations. "Mid-century architects, if they had access to all this technology, I like to think they would have taken advantage of it," he says. "They were always forward-thinking."







Williams and his wife met the homeowners during a visit to Palm Springs, when, serendipitously, both couples ended up at the same bar and the same café two days in a row, developing a fast friendship. When it came time for the renovation, it was easy for the owners to phone a friend, so to speak. Williams sees his role as an architect not as a person who dictates designs, but one who coaches decision-making.

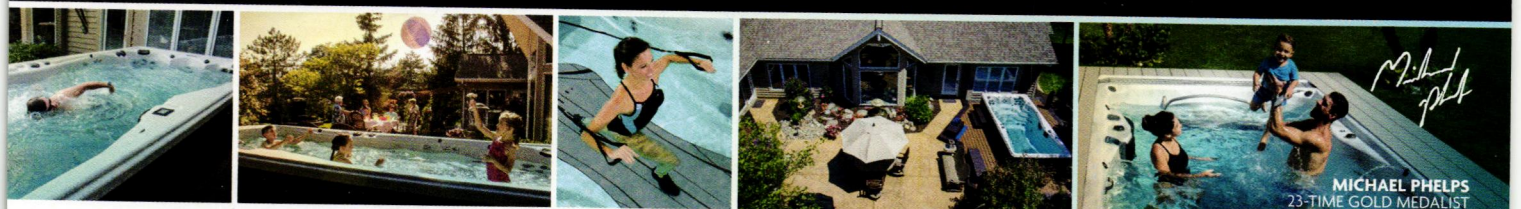
“The way I think of my role as an architect is that I’m here to educate people about the choices they have to make,” Williams says. “Ultimately, it’s all their choices.”

SEE RESOURCES, PAGE 86

LEFT: AN EXISTING ARBOR PROVIDES BOTH A DESIGN ELEMENT AND A PRACTICAL NEED FOR THE HOME, CREATING AN AREA WHERE THE OWNERS AND GUESTS CAN SEEK MUCH-NEEDED SHADE FROM THE DESERT SUN.

BELOW, RIGHT: THE BACKYARD FOCUSES ON NATIVE AND DROUGHT-HARDY PLANTS AMONG ITS DESERT VIGNETTES. POPS OF COLOR EMERGE WHEN THE DESERT FLORA BLOOMS.





Your home is more than where you live.

Create an oasis where you can enjoy every day, in every season. A Master Spas® swim spa allows you to exercise, relax, and make family memories.

- Walk, jog, swim, exercise
- Relax in massage therapy seats
- Water buoyancy relieves pressure on aching joints and muscles
- Reinvent family time



Master Spas® swim spas combine the benefits of a pool with the massage therapy of a hot tub. And, you can use it year-round, in any climate. See our line of Michael Phelps Swim Spas.

To find a dealer near you, visit:

MasterSpas.com



M.P.H.
MICHAEL PHELPS
23-TIME GOLD MEDALIST



Spinning THE COLOR WHEEL

By Rabekah Henderson
Photography by Grey Crawford
Design by Christopher Kennedy

See how this 1960s home in Rancho Mirage was renovated and revitalized with generous amounts of color.

THE COLORFUL PIECE OF ART ON THE DINING ROOM WALL IS THE CAPTIVATING FOCAL POINT OF THE ROOM. IT WAS ORIGINALLY IN THE LIVING ROOM, BUT WAS MOVED TO ITS CURRENT LOCATION ONCE DESIGNER CHRISTOPHER KENNEDY WAS BROUGHT IN TO RENOVATE THE RANCHO MIRAGE HOME. "PART OF MY REIMAGINING OF THE HOUSE WAS TO REDEPLOY THE ART IN DIFFERENT AREAS SO IT FELT NEW TO [THE CLIENTS]," HE SAYS.



WHEN THIS HOME IN RANCHO MIRAGE, CALIFORNIA, landed in designer Christopher Kennedy's lap it looked more Italianate than Mid Century. Luckily, the homeowners found the right person for the style change. Over the course of the renovation, the 1968 ranch was transformed as Kennedy and his team replaced the home's Tuscan-style travertine floors and crown molding with colorful elements that were more reflective of the home's MCM roots and aligned with the family's lifestyle needs.

CALIFORNIA COLORS

The shades of green and blue throughout the house were inspired by its California desert surroundings. The blues of the living room sofas and primary bedroom comforter are a nod to the expansive blue skies and sparkling pools just outside, while the green buffet in the dining room and green accessories in the primary bathroom are a reminder of the lush palm trees that fill the streets of Rancho Mirage and nearby Palm Springs.

(ABOVE) THE 'SMURF-BLUE' ADRIAN PEARSALL SOFAS WERE REQUESTED BY THE CLIENTS TO REPLACE THEIR ORIGINAL BUTTERY-YELLOW COLOR. THAT REQUEST SHOWED DESIGNER CHRISTOPHER KENNEDY THAT THEY WERE READY TO HAVE FUN WITH COLOR. "THE CLIENTS OBVIOUSLY WEREN'T AFRAID OF COLOR AND THEY WANTED MID-CENTURY [STYLE]," HE SAYS. "WE WEREN'T GOING FOR KITSCHY; WE WERE GOING FOR THIS CLASSIC, SOMEWHAT-ELEGANT MID-CENTURY LOOK, BUT WITH LOTS OF INSPIRING COLOR."

The five-bedroom, four-and-a-half-bath home rediscovered its roots in an unexpected way: through the clients' reupholstered Adrian Pearsall sofas. The sofas had originally been a buttery yellow but were reupholstered to an effervescent blue instead. "One of the clients looked at me and said, 'What if we made [these sofas] Smurf blue?' And I replied, 'Absolutely! We can make those sofas Smurf blue!'"



(TOP, RIGHT) THE GEOMETRIC ART ON THE DINING ROOM WALL GAVE THIS STATEMENT WALL ITS COLOR. "IT REALLY JUST SET SUCH A DRAMATIC FOCAL POINT AND COLOR PALETTE THAT INSPIRED THE TURQUOISE SILK WALL," KENNEDY SAYS. AGAINST THE WALL SITS A CUSTOM-MADE BUFFET FROM THE DESIGNER'S OWN COLLECTION. "IT'S USUALLY IN WALNUT, BUT HERE WE DID IT IN THIS AWESOME LIME GREEN."

(ABOVE) "I REALLY DO LOVE THE MEDIA ROOM," KENNEDY SAYS. "WE EMBRACED THE QUIRKS OF THE ROOM AND THE OVERSTUFFED SOFA, AND WE TURNED THE SPACE INTO ONE WHERE THE WHOLE FAMILY GATHERS IN THE EVENING. I THINK IT'S SUPER CHIC." THE MEDIA ROOM'S WARM TONES SERVE AS A CONTRAST TO THE BRIGHT, COOL TONES OF THE REST OF THE HOME, BUT THAT DOESN'T MEAN THE ROOM FORGOES COLOR ENTIRELY. IT USES IT JUST AS WELL, WITH THE ART ON THE WALL FEATURING EACH OF THE ENCHANTING COLORS DISPLAYED THROUGHOUT THE SPACE.

(BELOW) THE WHITE STACKED STONE WALL GROUNDS AND AMPLIFIES THE BOLD COLOR IN THE REST OF THE LIVING ROOM. "WHEN YOU'RE DEALING WITH ALL THIS COLOR IT CAN BORDER ON LOOKING CHILDISH OR KIND OF PLAY SCHOOL, SO WE ALWAYS WANT TO ADD A HEALTHY DOSE OF NEUTRALS," KENNEDY EXPLAINS. THE GLASS COFFEE TABLE AND WHITE-PAINTED WALLS CONTINUE THIS EFFECT, ALLOWING THE BLUE SOFAS AND VASES TO SHINE.





REFACING CABINETS IS A BUDGET-FRIENDLY WAY TO MAKEOVER A KITCHEN. LEARN MORE ABOUT THE PROS AND CONS OF THIS APPROACH ONLINE.

The bold pop of blue in the living room was an indicator of the way Kennedy and his clients approached color in the rest of the home. “The clients obviously weren’t afraid of color and they wanted Mid Century [style],” Kennedy says. “We weren’t going for kitschy; we were going for a classic, somewhat-elegant, Mid Century look, but with lots of inspiring color.”

TEXTURAL BALANCE

All that color can feel overwhelming if not done with careful thought and precision. That’s where Kennedy brought in “a healthy dose of neutrals.” Bright white terrazzo floors were poured along with stacked dolomite stone walls to ground the home and provide a soothing and elegant backdrop for the home’s vivid colors. Rich walnut hues in the kitchen and dining room act similarly, providing elegant Mid Century style that complements the bolder elements.

(ABOVE) KENNEDY OPTED FOR A SIMPLER KITCHEN RENOVATION RATHER THAN A LENGTHY GUTTED-TO-THE-STUDS ONE. “THE CLIENTS COULDN’T HANDLE THE THOUGHT OF COMPLETELY TEARING OUT THE KITCHEN AND TOTALLY REDOING IT BECAUSE OF THE STRESS OF THE TIME [IT WOULD TAKE] AND HAVING FOUR KIDS AT HOME.” INSTEAD, KENNEDY REFACED THE EXISTING CABINETS IN WALNUT, ADDED A NEW TILE BACKSPLASH AND GAVE THE COUNTERTOPS A REFRESH.

But shades of bright white, blue and green aren’t the only colors that shine in this Rancho Mirage gem. The media room’s richly colored wood panels, along with its inviting leather sofa and period-appropriate armchairs and side tables, provide a contrast to the bright colors found in the rest of the home.

USE **BOLD** **COLORS** LIKE A *Designer*

Vibrant color can add 'oomph' to your space like little else, but learning how to use it effectively can be a daunting first step. This Rancho Mirage home contains plenty of helpful color cues for you.

- **PICK YOUR COLORS.** When selecting bold colors for your home, aim to stick with just a few rather than the entire rainbow. Designer Christopher Kennedy used a cool palette of blues, greens and yellows in this home. Limiting your palette ensures that the colors will stand out.
- **OPT FOR A NEUTRAL PALETTE.** If you want to work with a color palette of neutral shades, stick with white or cream walls and floors, and incorporate calming grays or classic blacks.
- **CHANGE IT OUT.** Getting tired of your once-loved combination of bright-orange and blue? By starting with a neutral palette and limiting your number of bold colors it's easy to switch out your bright hues when you want to change them.

THE RANCHO MIRAGE HOME'S STACKED STONE WALL IS AN ODE TO ITS MID-CENTURY ROOTS. "WE ACTUALLY ADDED THE STACKED STONE TO THE HOUSE TO GIVE IT A MORE PERIOD FEELING, BUT IT WAS DONE IN THE VERY AUTHENTIC MID-CENTURY WAY, LIKE OTHER HOMES YOU SEE IN PALM SPRINGS," KENNEDY SAYS. A VINTAGE CREDENZA FROM MASTERCRAFT SUPPORTS THE STYLE WITH CHARACTER.



(BELOW) THE SUNNY AND SLEEK PAVILION IN THE RANCHO MIRAGE HOME WAS ADDED ONTO THE HOME IN THE EARLY 2000S BY ARCHITECT LANCE O'DONNELL. IT'S ANOTHER GREAT HANGOUT SPOT FOR THE HOUSE, AND IT LOOKS OUT OVER THE POOL AND BACKYARD. THE PAVILION HAS A TUCKED-AWAY HOME THEATER IN IT—PERFECT FOR CLOUDY DAYS.



Though the clients' original plan was to paint the paneled walls a lighter color, Kennedy took a different approach. "I love a dark media room in an all-white house," he explains. "I said, 'Let's just really embrace this and make it a bit sexy.'" The art hanging above the sofa ties together the media room's reds, browns and blacks for a space that uses color as expertly as the rest of the home. The result was a cozy hangout space that flipped the home's cool color palette into a warmer one.

"We just embraced the browns and the oranges and the natural color palette of the mid century," Kennedy says. "I love that it's a departure from the rest of the house, and it's just a cozy cocoon. [In an] otherwise white house, I think it's so much more relaxing."

YEAR-ROUND LIVING

Another thing that sets this Rancho Mirage home apart from its neighboring dwellings is that it's designed to be a full-time residence for the clients and their four children in an area known for its retirees and vacation homes. "It's pretty much a family home, which we don't often have here in Palm Springs, so that was super fun," Kennedy says.

The home is "made for family living; there are lots of performance fabrics and nothing is too precious," Kennedy says. The kids' bedrooms were designed to grow with them. Flexible furniture, like daybeds, can rotate between being a place for sleeping and a place for hanging out.

The home is filled with spaces for the family to gather, from the brightly colored living room and cozy den to the stylish kitchen and the light-filled pavilion. "They actually like to spend time together and sit and play games, so they really use all the spaces [in the home]," Kennedy says.



(ABOVE) THE PRIMARY BEDROOM IS MADE FOR MORE THAN JUST LOOKING GOOD (WHICH IT DOES REMARKABLY WELL!), BUT FOR SERVING AS A RELAXING OASIS AS WELL. THIS IS DONE IN PART WITH THE BEDROOM'S CUSTOM-MADE BED FRAME. ATOP THE BED SITS TRINA TURK BEDDING, WHICH ECHOES THE BLUE AND GREEN FOUND ELSEWHERE IN THE HOME.

(RIGHT) POWDER ROOMS ARE TOO OFTEN FORGOTTEN IN MANY HOMES—QUICKLY DESIGNED AND PUT TOGETHER WITHOUT A SECOND THOUGHT. BUT THAT'S NOT SO IN THIS HOME. "WE MADE EVERYTHING REALLY WHITE AND THEN WE CONCENTRATED THE COLOR WITH THE JASPER JOHNS PAINTING WE BOUGHT FROM A GREAT GALLERY," KENNEDY SAYS. "AND IT HAS PLENTY [OF COLOR]: THE YELLOW IN THE PAINTING AND THE BLUE IN THE SCONCES ARE JUST ENOUGH COLOR IN AN OTHERWISE REALLY REFRESHING WHITE MODERN SPACE."

(OPPOSITE, TOP) THE MOSAIC TILE SURROUND OF THE PRIMARY BATHROOM SHOWER CONTINUES THROUGH THE REST OF THE ROOM. WHEN DESIGNING THE SPACE, KENNEDY SAYS HE WANTED TO "EMPHASIZE THE MOSAIC, WHICH GOES BACK TO THE ROMAN ERA. IT WAS, OF COURSE, ALSO POPULAR IN THE MID-CENTURY AND YOU SEE IT AT HIGH-END SPAS."

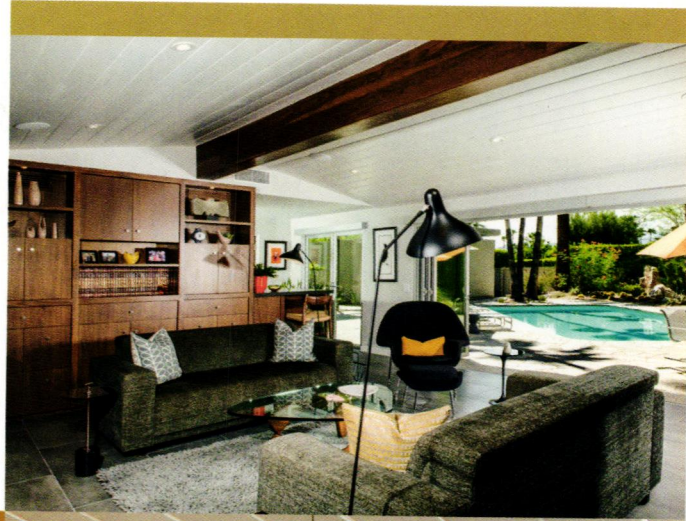
The outdated Tuscan elements of the home's previous look are now long gone. Instead, thanks to a bold approach to color and design, this Mid Century ranch now has a style that's bright, crisp, functional and fun. 🌿

SEE RESOURCES, PAGE 86





SHIELDS RESIDENTIAL
CONSTRUCTION + REMODELING



BUILD. RESTORE.
REMASTER. CONSULT.



760.531.4252 | SHIELDSRESIDENTIAL.COM

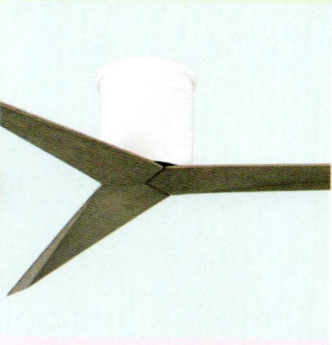
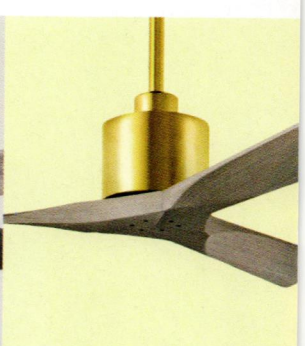
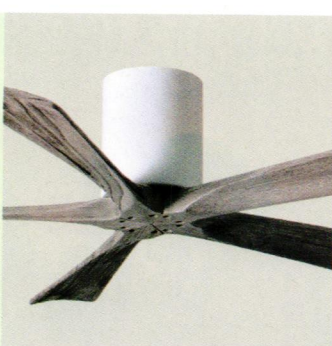
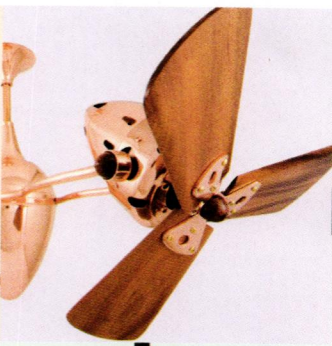


(BELOW) THE HOME'S OFFICE IS PART OF ITS PRIMARY SUITE AND WAS REVAMPED TO MAKE IT A MORE ENJOYABLE WORKSPACE. ORIGINALLY, "ONE OF THE CLIENTS WAS FACING THE WALL, AND HE DIDN'T REALLY WORK AT THE DESK A WHOLE LOT," KENNEDY EXPLAINS. "SO [WE ADDED] A MID CENTURY DESK AND WE TURNED IT TO HAVE HIM FACING OUT. HE WENT FROM HATING HIS OFFICE TO LOVING IT, WHICH, OF COURSE, IS ALWAYS THE GOAL OF ANY DESIGNER."



MATTHEWS

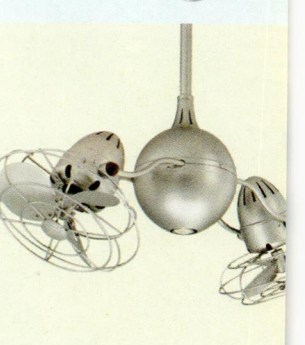
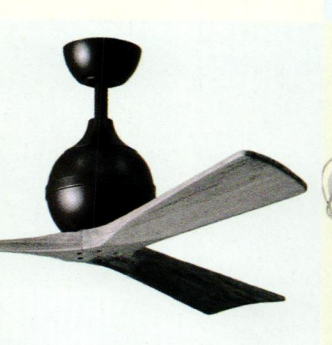
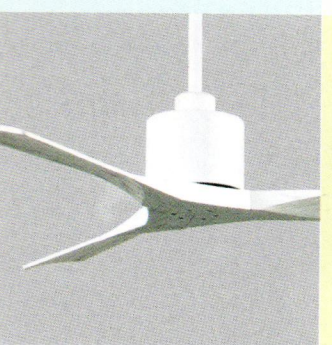
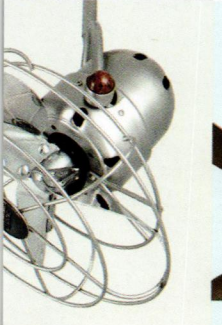
FAN COMPANY

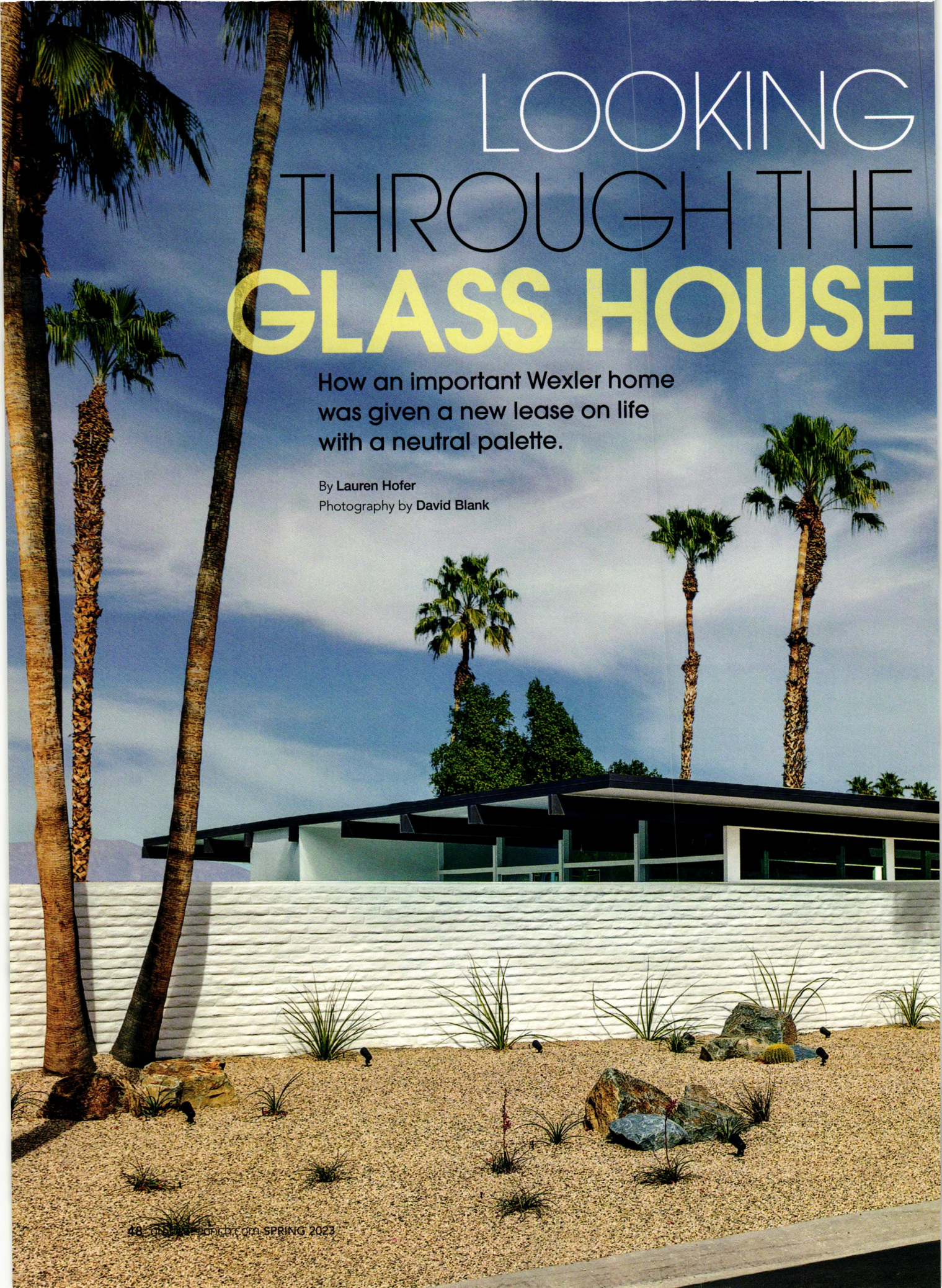


Over 30 years of
Design
Innovation
Craftsmanship
Sustainability
Customer Service

Few things enhance a space like the timeless designs of a Matthews fan. Whether still or quietly circulating air to improve the comfort and health of a room, our thoughtfully crafted products complement any aesthetic. Backed by a limited lifetime warranty, our fans are of the highest quality and will dutifully last for years to come. Visit us to find a showroom near you.

www.MatthewsFanCo.com





LOOKING THROUGH THE GLASS HOUSE

How an important Wexler home
was given a new lease on life
with a neutral palette.

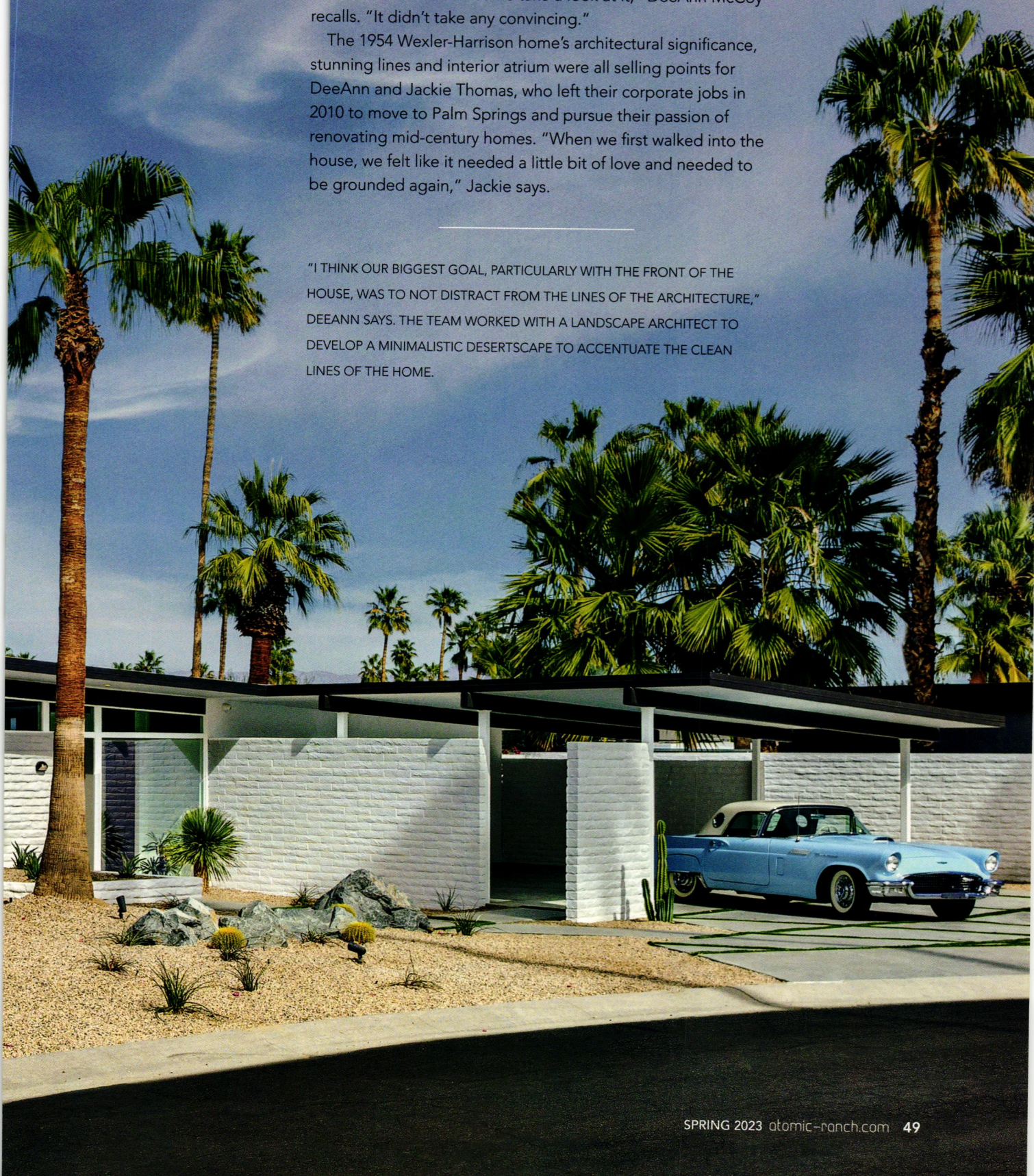
By Lauren Hofer

Photography by David Blank

FAMED ARCHITECT DONALD WEXLER'S FIRST COMMISSIONED PROJECT after leaving William Cody's firm was the Lilliana Gardens Glass House. And when it came on the market, it was a "must buy" for the couple behind Thomboy Properties Inc. "Our agent contacted us to say the Glass House was probably going to go on the block and asked if we wanted to come take a look at it," DeeAnn McCoy recalls. "It didn't take any convincing."

The 1954 Wexler-Harrison home's architectural significance, stunning lines and interior atrium were all selling points for DeeAnn and Jackie Thomas, who left their corporate jobs in 2010 to move to Palm Springs and pursue their passion of renovating mid-century homes. "When we first walked into the house, we felt like it needed a little bit of love and needed to be grounded again," Jackie says.

"I THINK OUR BIGGEST GOAL, PARTICULARLY WITH THE FRONT OF THE HOUSE, WAS TO NOT DISTRACT FROM THE LINES OF THE ARCHITECTURE," DEEANN SAYS. THE TEAM WORKED WITH A LANDSCAPE ARCHITECT TO DEVELOP A MINIMALISTIC DESERTSCAPE TO ACCENTUATE THE CLEAN LINES OF THE HOME.





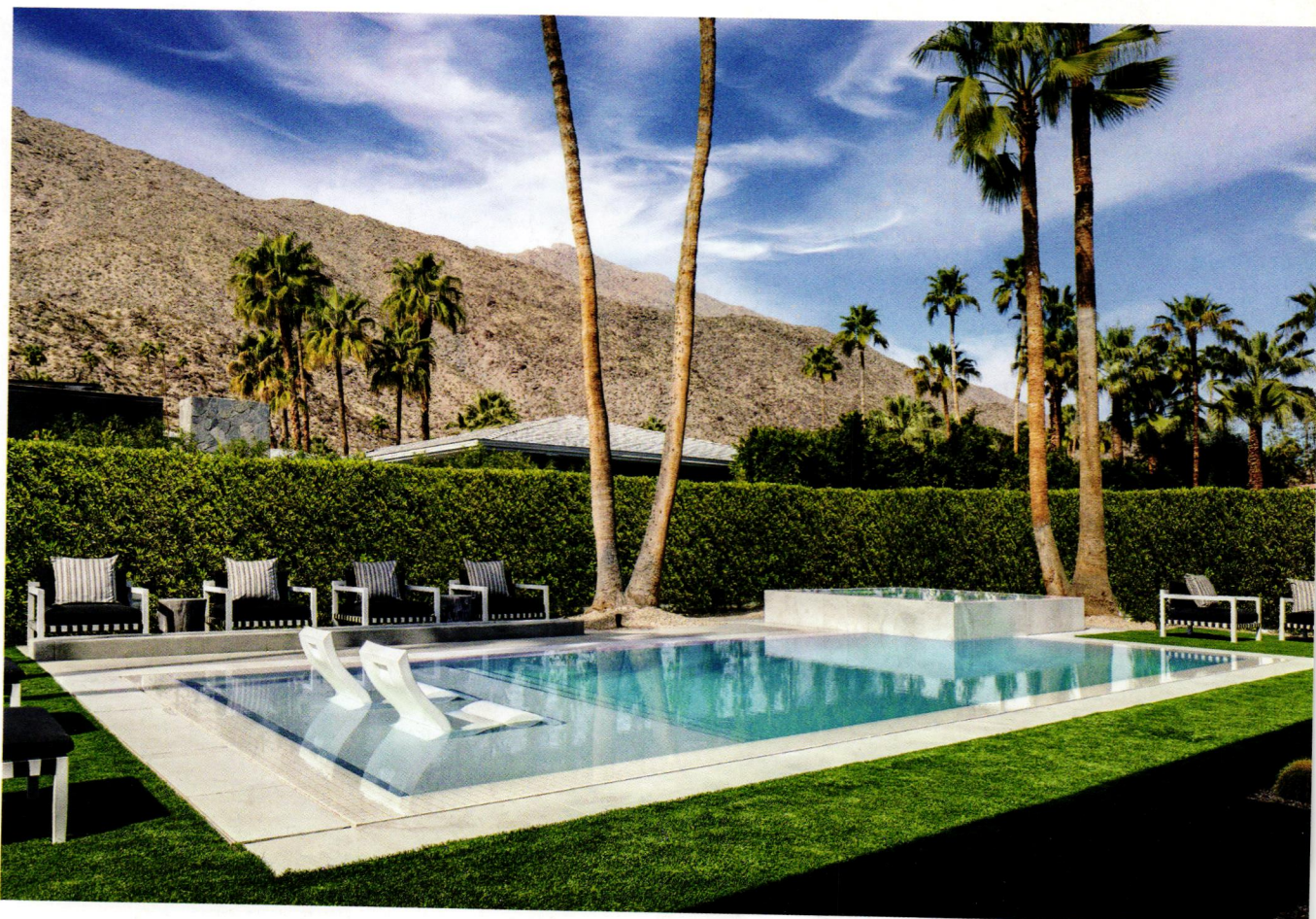
A LIVABLE LAYOUT

With 3,000 square feet, three en-suite bedrooms and open and connected living areas, the home feels spacious and livable in addition to being visually stunning. "The bedrooms were really generous for a house of that size and age," Jackie says. "There is a raised living room; you step down into the dining room and den. The bedrooms surround that center area." Also centrally located is the interior atrium, a glass-enclosed courtyard that brings the outdoors in with views of the sky from the living spaces. "It's a nice square box with an interior courtyard, which is a treat," DeeAnn says.

ABOVE: DEEANN AND JACKIE DID SOME DIGGING TO FIND OUT WHETHER THE ORIGINAL HOME HAD A CARPORT. WHEN OLD PHOTOS INDICATED THAT A CARPORT WAS INDEED AN ORIGINAL FEATURE, THEY REBUILT IT. "WE WERE ABLE TO REPLICATE THAT WITH SLUMP STONE SO IT WAS CONSISTENT," DEEANN SAYS.

OPPOSITE, TOP: THE FIRST VIEW UPON ENTERING THE HOME IS OF THE STUNNING INTERIOR ATRIUM WHERE ACACIA WILLARDIANA TREES AND MEXICAN BEACH STONES CREATE A PEACEFUL PICTURE. "IN THIS HOUSE, YOU GET A LOT OF THE OUTSIDE-IN/INSIDE-OUT; THE LINES GET REALLY BLURRED, ESPECIALLY WITH THIS INTERIOR ATRIUM," JACKIE SAYS. THIS PHOTO ALSO CAPTURES THE ORIGINAL SLUMP STONE, WHICH WAS UNCOVERED DURING THE REMODEL.

OPPOSITE, BOTTOM: "THE POOL AND THE SPA WERE THERE, BUT THEY HADN'T BEEN PLASTERED AND THE YARD WAS ALL DIRT," JACKIE RECALLS. AFTER FINISHING THE POOL, THEY ADDED TURF AND CEMENT HARDSCAPE FEATURES TO REDUCE WATER USAGE.





ADDITION BY SUBTRACTION

While the house today is a stunning and modern representation of Wexler and Harrison's original intent, when Jackie and DeeAnn purchased it, years of alterations and partial renovations left mixed messages about the direction the home was going. "This house was a little bit of addition by subtraction," Jackie says, "going back in and adding value by removing stuff that didn't belong."

"This house was a little bit of addition by subtraction, going back in and adding value by removing stuff that didn't belong."

BELOW: WHEN IT CAME TO FURNISHING THE HOME, DEEANN AND JACKIE USED A STAGING COMPANY. "WE MET WITH THEM AND BRIEFED THEM, TALKING ABOUT THE FEEL, THE SENSATION AND THE ORGANIC NATURE OF THE HOME," DEEANN SAYS.

OPPOSITE: DURING THE RENOVATION, DEEANN AND JACKIE REPLACED THE EXISTING ELECTRIC FIREPLACE WITH A GAS ONE. "WE KEPT THE LINEAR ORIENTATION BECAUSE THAT WAS LOVELY," DEEANN EXPLAINS.



PEACE OUT

Tips for keeping your mid-century home as serene as this one.

- **INCORPORATE EARTHY TONES.** A simple color palette will always simplify a space, but to add the grounded element select tones with some warmth too. "We just wanted it to be really peaceful, calm and Zen, so we chose a really neutral color palette," Jackie explains.
- **MINIMIZE TEXTURES.** Even something as simple as a white tile backsplash can be distracting if you're really trying to simplify. "You could be pretty calm with a backsplash tile, but it's still a different texture," DeeAnn says. Instead, opt for a smooth slab finish in the kitchen or bathroom to bring more calm to a space.
- **BRING THE OUTSIDE IN.** This house has an advantage with an interior atrium that brings plants, trees and sky directly into the home, but you can display touches of nature, whether it's a real stone feature, a plant or a chandelier that looks like antlers, as DeeAnn and Jackie did above the dining table.

The quartz countertop slab was used for the backsplash instead of tile and the outlets were flush-mounted so they are almost undetectable to the eye.



ABOVE: A STEP DOWN LEADS YOU INTO THIS OPEN DINING SPACE AND KITCHEN WHERE THE BROWN BEAMS ARE DISPLAYED IN ALL THEIR GLORY. THE LIGHT FIXTURE IS A MODERN INTERPRETATION OF AN ANTLER. "IT BRINGS IN A LITTLE BIT OF NATURE WITH A MODERN TWIST," JACKIE SAYS.

LEFT: INSTEAD OF USING A TILE BACKSPLASH, JACKIE AND DEEANN OPTED TO USE THE SAME QUARTZ SLAB AS ON THE COUNTERTOP. PAIRED WITH FLUSH-MOUNTED OUTLETS, THE RESULT IS SEAMLESS AND MODERN. "USING THE COUNTERTOP MADE IT FEEL LIKE ONE UNIT," DEEANN SAYS.





FORM & FUNCTION

For example, upon closer inspection they realized that past renovators chose to cover the original slump stone with drywall. "I think part of that was to help them run electrical," DeeAnn says. "We just thought, we know what this house is supposed to look like, let's stay in our lane." They exposed the drywall and found new solutions for the electrical wiring. Another major element of the renovation involved rebuilding the carport. "It took some sleuthing to figure out what we needed to put back," DeeAnn says. "Looking back at photos, we did find out that it was originally a carport, so that's what we put back."

In the kitchen, Jackie and DeeAnn tore everything out and started with a clean palette. "We're all about function, we're all about beauty. And if it's not functionally beautiful, then it doesn't make sense, right?" Jackie says. They used the quartz countertop slab for the backsplash instead of tile and the outlets were flush-mounted so they're almost undetectable to the eye. "Again, it goes back to clean, simple lines and not wanting to distract yourself with an accent," Jackie says. In every corner of the house, the pair kept this goal in mind, opting for neutral tones and a minimal approach.

The soft color of the tile in place when Thomboy Properties purchased the home is the epitome of neutral, grounding the space. "We liked the fact that it has a real richness, kind of a cementitious color, but it's also got a little 'taupe-iness' to it," Jackie says. Pairing the clean white walls with a dark-brown beam also serves to lift the eye and capitalize on the home's stunning form. "The lines of this home are spectacular. It's almost delicate, but there's still strength," DeeAnn says, "we didn't want to do anything that would distract from this really calm palette that lets you take in everything."

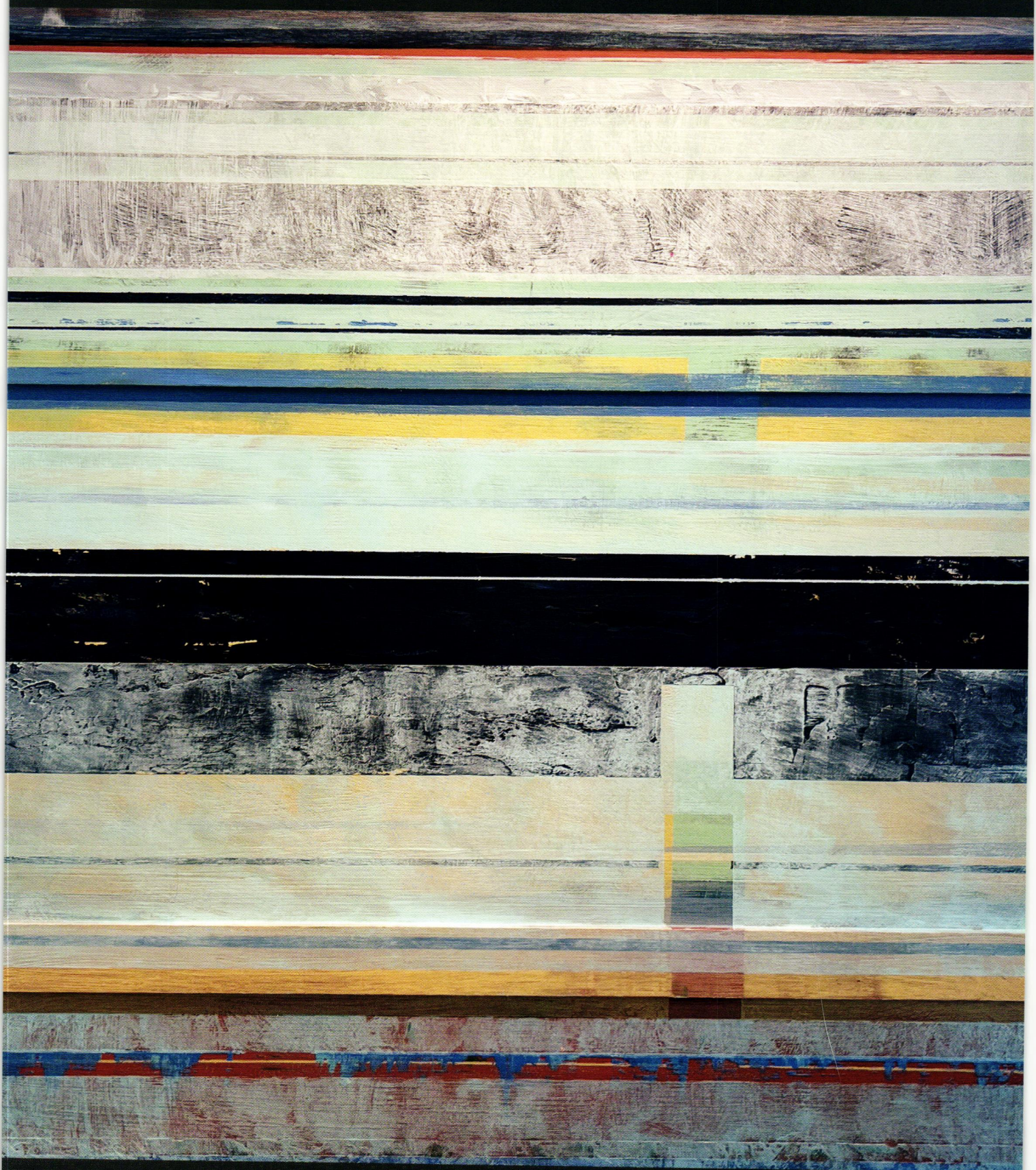


TOP: THIS MORE FORMAL LIVING SPACE GETS OUTDOOR VIEWS FROM ALL SIDES. MINIMAL FURNISHINGS MAKE THE CLEAN LINES OF THE ROOM THE DESIGN FOCAL POINT.

BOTTOM: THIS SECONDARY BEDROOM FEATURES EUROPEAN BEDSIDE READING LIGHTS AND TWO FLUSH-MOUNTED ANEMONE LIGHTS FOR A CLEAN, COOL LOOK.



Matthew Pierce



Elevation, Acrylic 24" x 24"

matthewpiercefineart.com



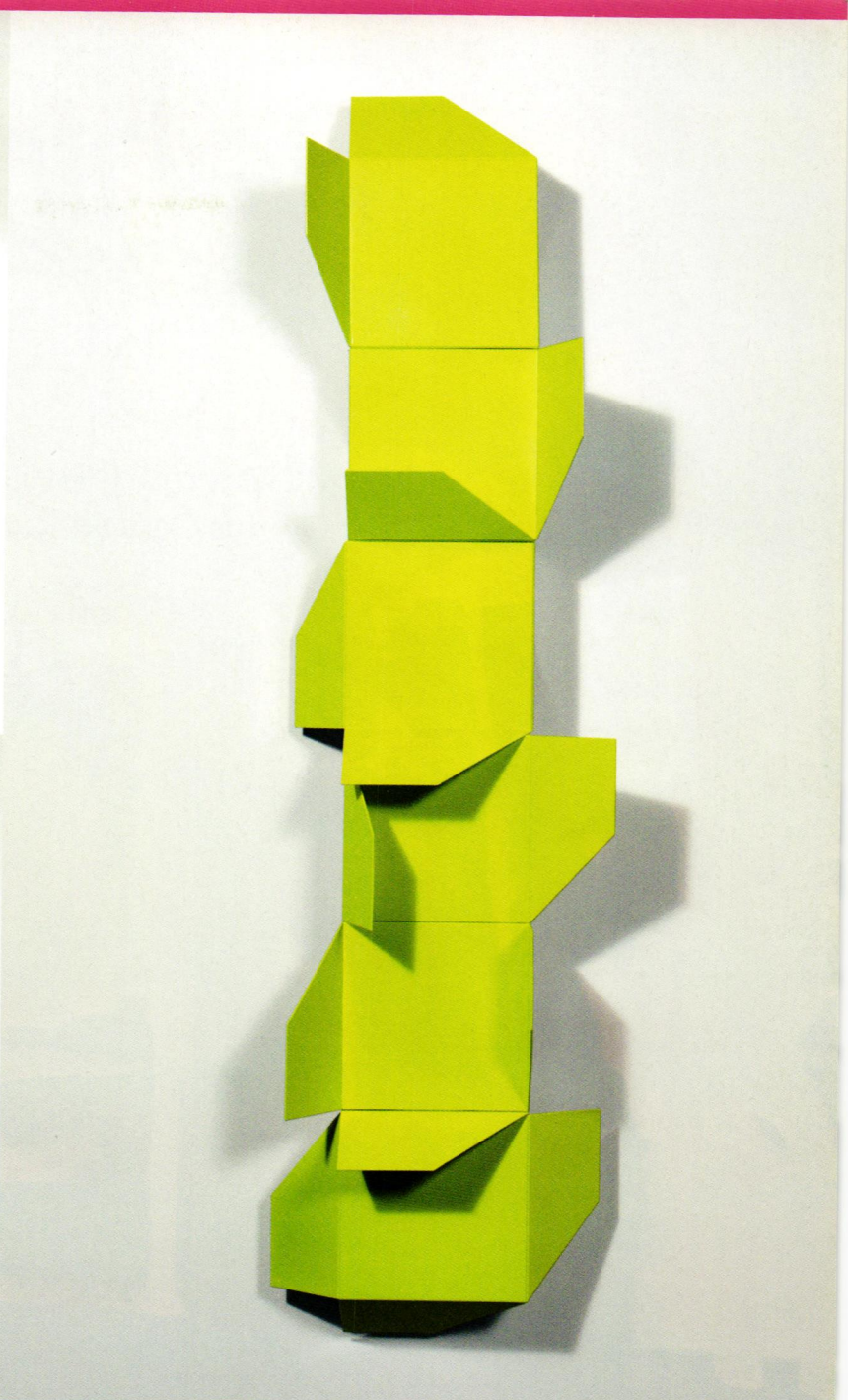
TOP: THE PRIMARY BEDROOM OPENS TO THE POOL WITH FLOOR-TO-CEILING WINDOWS AND BEAMS THAT EXTEND FROM INSIDE TO OUTSIDE, THIS SPACE CONTINUES THE HOME'S THEME OF BLURRED LINES.

LEFT: DEEANN AND JACKIE MADE CONTINUITY THROUGHOUT THE HOUSE A GOAL BY USING STONE SLAB FINISHES IN THE BATHROOMS. THE LIGHT FIXTURE IS A CLASSIC MID-CENTURY SPUTNIK.



Outside, they finished the pool and spa, which had been partially completed. Turf lawn, new hardscape surfaces and a minimal desert scape in the front complement the exterior. "We just wanted a minimal desertscape that didn't distract," DeeAnn says. From both the curb and the interior, this historically significant home captures the essence and soul of mid-century design. 🌵

SEE RESOURCES, PAGE 86



Top: Brooks Oliver, *Zipper Vase Centerpiece (Red)*, Ceramic & Glaze, 8" x 24" x 8"

Merick Reed, *Series 7, No. 2 (Chartreuse)*, Aluminum & Paint, 40" x 22" x 9"

Bottom: Christopher Rowley, *Double Downward Swing*, Yarn & Monks Cloth on Panel, 22" x 23" x 3"

Palm Springs' premier destination for the finest in **Contemporary Art and Mid-Century Originals** from the 1950s–60s...including Malcolm Myers, Reginald Pollack and Lynne Mapp Drexler.


Visit Rubine Red Gallery and Modernist Frame & Design in the heart of the Palm Springs Uptown Design District—**or online to see more from our amazing artists!**



668 N Palm Canyon Dr. Palm Springs, CA 92262
760.537.7665 rubineredgallery.com

Behind the SCENES

An MCM remodeling and construction expert transforms his California rental property into an inviting hub.



SHIELDS CHOSE GLASS PATIO DOORS TO HELP BLUR THE DIVIDE BETWEEN THE INDOOR AND OUTDOOR LIVING AREAS. SIMILARLY, THE COUPLE "TILED THROUGH THE SLIDER ON THE BACK PORCH FOR A CONTINUOUS EXPERIENCE," HE SAYS.

CONTRACTORS REMODEL OTHER PEOPLE'S HOMES FOR A LIVING, but what happens when they work on their own property? Maybe you've seen this storyline on your favorite home-renovation show. It's certainly intriguing. Steven Shields, owner of Shields Residential, says it's fun too.

Shields and his wife, Lauren, purchased a 1973 condo in South Palm Desert, California, as a rental property. Although they wouldn't be moving into the 1,200-square-foot home, they resolved to make it inviting for everyone who enters.





"FROM THE OUTSIDE, THE HOME LOOKS QUITE SIMILAR TO THE OTHER 11 HOMES IN THE COMPLEX, BUT THE INSIDE IS SUPER BOMB," SHIELDS SAYS. THE LUSH GREENERY AND RED-ORANGE ROOF PROVIDE A NICE CONTRAST TO THE OTHERWISE NEUTRAL EXTERIOR.

"We wanted to restore and remaster it with excellent materials for 28-day renters to enjoy in our amazing town," Shields says. "We feel that by putting premium products into the renovation we are far more likely to get clientele who are really looking for a special experience while they make our house their home."

BOTTOM: WHEN IT CAME TIME TO PURCHASE THE BIG-TICKET ITEMS FOR THE KITCHEN, THE COUPLE KNEW EXACTLY WHAT THEY WANTED. "WE USED AMAZING JENNAIR APPLIANCES, WHICH WE LOVE IN OUR OWN HOME," SHIELDS SAYS. IT MIGHT LOOK LIKE THERE ARE TWO OVENS, BUT THE SMALLER ONE IS ACTUALLY A DRAWER MICROWAVE. SHIELDS HIGHLY RECOMMENDS THEM.

GOOD BONES

When the couple assessed the property, they found that it was simply outdated. Since they didn't have to worry about structural problems, they could focus all their efforts on the cosmetic changes. "There are some amazing homes we work in that were truly custom homes commissioned by families, and those tend to have more of a restoration vibe. The homeowner is often a steward of a home like that," Shields explains. "But many of our projects are homes like our condo that were built on spec with middle-of-the-road materials that age marginally, given 50 years since being built. We are far more empowered in these homes to customize them to a current state of awesomeness."





Consign Today | Art + Design
Tuesday, February 28, 2023

We are currently accepting quality consignments of Mid-Century & Contemporary art, design, furniture, pottery, bronzes, jewelry, and more.

Auctions • Private Sales • Appraisals

We are a family-owned auction house delivering both world-class service and results for over 50 years. For your free auction valuation, or for more information, please contact us at info@johnmoran.com.

JOHN MORAN
SINCE 1969
AUCTIONEERS & APPRAISERS



Before construction began, the industrious couple prepared by asking important questions and making key decisions. "We created a detailed plan for the entire house and worked out a scope of work on a room-by-room basis. Next, we leaned into our experts in cabinetry and appliances to help make selections that would provide the experience we wanted for our clients. We remodeled the condo exactly as we would for anyone else," the contractor says.

MID-MOD INFLUENCE

"Mid Century Modern is a vernacular that has successfully transcended time with a prediction of what the future holds," Shields says. "Most architectural periods speak of the past and how we lived in a certain time, but Mid Century Modern was an architectural conversation about the house of tomorrow. Now we live in that future. The homes and their stewards all deserve to enjoy the amenities that the real future holds."

As an MCM enthusiast, Shields admires and takes inspiration from several acclaimed builders. "Our primary home here in South Palm Desert was created by Charles Du Bois. He's known in Palm Springs for his Modernist take on a Polynesian A-Frame, wrongly named a 'Swiss Miss.' After we bought our dream home and found his original plans, we've become quite enamored with all that he has accomplished. We are so privileged, too, to enjoy having worked in homes by Donald Wexler, William Cody, A. Quincy Jones and many by William Krisel—each has provided their own inspirations," Shields says.

WHERE FORM MEETS FUNCTION

Steven believes that, in many MCM homes, "there remains a dissonance where form meets function." He and his team address this issue whenever they remodel. "The homes of the 1950s and 1960s employed a brilliant take on



BELOW: THESE BLUE CHAIRS MAKE A STATEMENT WHILE ALSO ENTICING PEOPLE TO SIT DOWN, RELAX AND RECONNECT WITH EACH OTHER. SINCE THE MODERN DINING ROOM FLOWS RIGHT INTO THE KITCHEN, IT'S THE PERFECT PLACE FOR ENTERTAINING.



how people lived then, with insights into how we would live in the future; but the technology wasn't available for things like double-pane windows, mini-splits and heat pumps, foam roofs and amazing insulation. We aim to fix those discrepancies that were not the fault of the visionaries; many of them simply didn't get to enjoy the opportunities these advancements afford their vision," Shields explains.



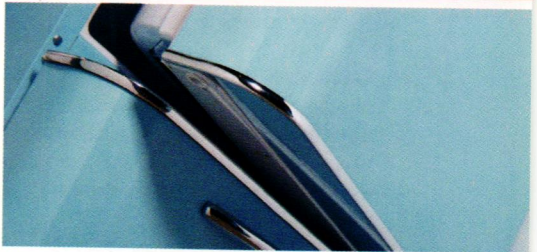
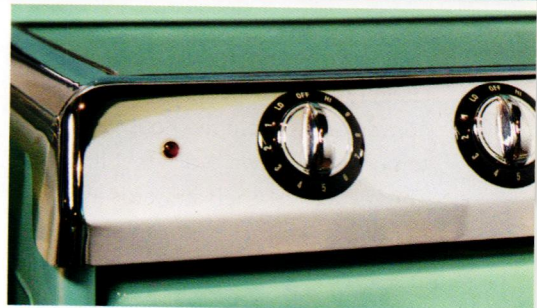
MODERN PERFORMANCE AND UNMISTAKABLE STYLING

When your kitchen transforms into a space fashioned uniquely to your style, you experience an unparalleled sense of home. Even when embracing popular kitchen design trends, the result is completely original once merged with the unmistakable styling of Northstar appliances from Elmira Stove Works.

Get up close and personal with your new appliances from Elmira. The chrome is real, the finishes are polished to perfection, and the performance is fully modern. From interior LED refrigerator lighting and filtered water dispensers to sealed gas burners and true convection ovens, the features are rich, and the Canadian handcraftsmanship is truly remarkable.

Begin your design journey with our industry-leading kitchen visualizer. Visit us online and craft a style all your own.

elmirastoveworks.com/visualizer/northstar



ELMIRA
STOVE WORKS

elmirastoveworks.com
800-295-8498



TEXTURE MESSAGES

MCM remodeling and construction expert Steven Shields shares his favorite ways to add varied textures to your home.

- **BACKSPLASH** - "In my opinion, you should never stop your backsplash unless your budget forces the issue," Shields says. In the kitchen, he used penny round tiles, which were sourced from his local partners at Modern Home Design Showroom.
- **GLASS** - Shields likes to incorporate glass whenever he can. He says the easiest way to do this is to include plenty of windows.
- **WALL HANGINGS** - If you choose the right wall hangings, you can add a pop of color or a touch of whimsy to a more traditional space. Looking for inspiration? Check out the artwork in the condo's guest bedroom.
- **WOOD CABINETS** - Cabinets are supposed to be functional, but if you select the right finish, they can be aesthetically pleasing too. The ones in the kitchen, sourced from Classic Cupboards, bring warmth and charm to the crisp, clean area.

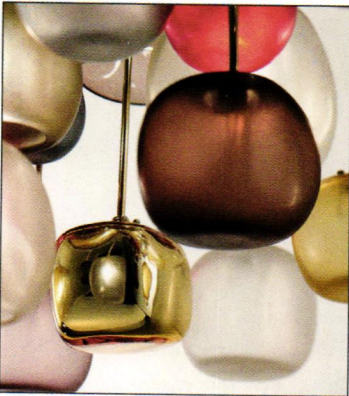
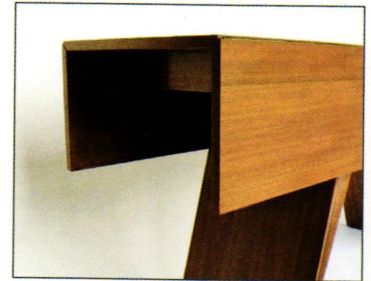
ABOVE: ALTHOUGH IT'S IMPORTANT TO STICK TO YOUR BUDGET, SHIELDS SAYS YOU SHOULD INVEST IN YOUR APPLIANCES. "YOUR APPLIANCES ARE GOING TO LAST YOU FOREVER, SO YOU MIGHT AS WELL GET REALLY GREAT ONES AND LET THEM BLESS YOU WHILE YOU USE THEM EVERY DAY."

BELOW: MANY PEOPLE CHOOSE EITHER FLOATING SHELVES OR UPPER CABINETY FOR THEIR KITCHENS, BUT SHIELDS WENT WITH BOTH. "FLOATING SHELVES LOOK INCREDIBLE, ESPECIALLY IF YOU'VE DECIDED TO GO TO THE CEILING. HOWEVER, THEY REQUIRE THAT YOU'VE CHOSEN SETTINGS AND CUPS THAT HAVE LITTLE VARIETY OR ELSE THEY LOOK TOO CLUTTERED," HE SAYS. "HAVING A COMBINATION OF BOTH ALLOWS YOU TO PUT UNSIGHTLY THINGS, LIKE COFFEE FILTERS AND SUCH, IN THE RIGHT LOCATIONS."

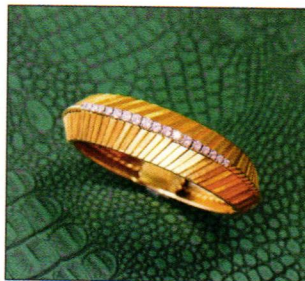
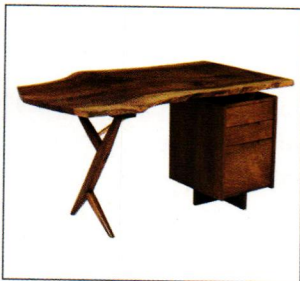


The Best in Midcentury and Modern Design

February 17-20, 2023 | Palm Springs Convention Center



PALM SPRINGS MODERNISM SHOW



Presenting vintage 20th century and contemporary art and design

February 17 | Preview Party

February 18-20 | Modernism Show

6-9pm

Saturday

10am-6pm

Benefiting Modernism Week

Sunday

10am-5pm

Tickets at modernismweek.com

Monday

10am-4pm

palmspringmodernism.com

Presenting Sponsor

Silver Sponsor

Sponsors

**atomic
ranch**

**FRANK
LOYD
WRIGHT
FOUNDATION**
ADVANCING THE WAY
WE BUILD AND LIVE

ABELL

AMARA
PREMIER DUG RESOURCE

BIDSQUARE

Bonhams
AUCTIONEERS SINCE 1793

FEIGHT FORWARDING.COM

modernism week
Official Modernism Week Sponsor

JOHN MORAN
SINCE 1949
AUCTIONEERS & APPRAISERS

CM

Media Sponsors

Dolphin Promotions 331.307.7101

AEV Antiques & Fine Art

ANTIKUES



**CALIFORNIA
HOMES**

PALM SPRINGS LIFE



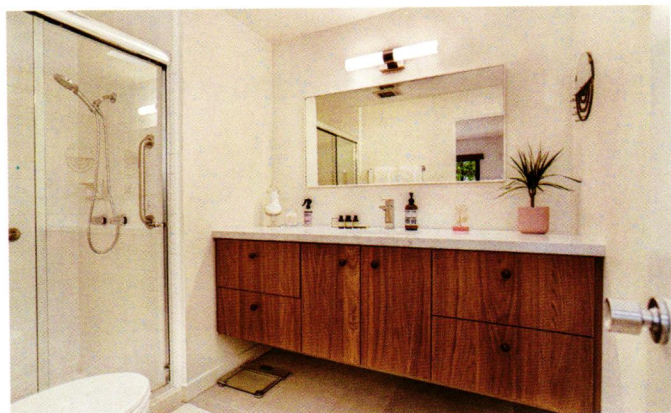
THE CONDO HAS TWO BEDROOMS AND TWO BATHROOMS. THE PRIMARY BEDROOM'S SLIDING DOOR LEADS TO THE BACK PORCH, WHICH HAS A TABLE, CHAIRS AND A SMALL GRILL. PEOPLE CAN ALSO ACCESS THIS SPACE VIA THE LIVING ROOM'S PATIO DOOR.

TERRIFIC TEAMWORK

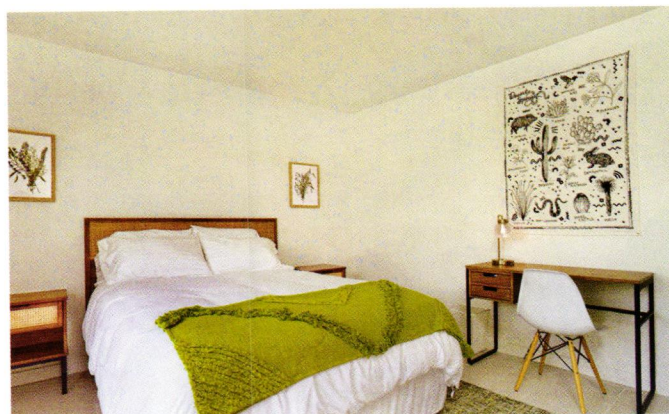
Overall, the couple had a blast renovating their rental property. "We've remastered our primary home and found it extremely difficult to make final decisions, but decisions for our rental condo were just far enough removed from us to make it a bit easier emotionally to choose final color schemes and such," Shields says.

"Lauren offered the majority of interior design decisions that our clients or their designers often provide. Her selections of color, wallpaper, backsplash and cabinetry made a huge impact on the overall experience," Shields explains. "She also made sure that all the furniture fit into our goals for both form and function." 🌀

SEE RESOURCES, PAGE 86



"WE LOVED THE 4-BY-4 WALL TILE IN THE BATHROOMS, SO WE LEFT IT ALONE," SHIELDS SAYS. WITH LARGE DRAWERS AND CABINETS, THE NEW VANITY PROVIDES PLENTY OF STORAGE SPACE FOR TOWELS AND OTHER ESSENTIALS. SHIELDS COULDN'T WAIT TO INSTALL THE RETRO KNOBS, WHICH HE FOUND WHILE WORKING ON A DIFFERENT RENOVATION.



"OUR COMPANY, SHIELDS RESIDENTIAL, FOCUSES OUR REMODELING EFFORTS ON REMASTERING MID CENTURY MARVELS USING TECHNOLOGY, COMFORT AND LIVING ADVANCEMENTS COMMON TO HOW PEOPLE LIVE TODAY," SHIELDS EXPLAINS. HIS RENTERS UNDOUBTEDLY APPRECIATE THE HIGH-QUALITY ADDITIONS TO THE CONDO. "THEY LOVE THE FURNITURE. LAUREN NAILED IT," HE SAYS.

Vintage Vault

Curator of Cool



Discover us on **Etsy.com** at
VintageVaultTulsa

Palm Springs

Ocotillo Lodge

TOUR AND ENJOY EIGHT INTERIOR UNITS FEATURING THOUGHTFUL DESIGN TOUCHES, SUCH AS SKYLIGHTS IN THE BATHROOMS, JALOUSIE WINDOWS IN KITCHENS AND CLERESTORY WINDOWS WITH PALM-TREE AND MOUNTAIN VIEWS.



PHOTO BY CHANTEL CRUIKSHANK

TOUR FOR A CAUSE

A look at the widespread impact of Modernism Week.

By Ian McMaster and Bob Bogard

MODERNISM WEEK TAKES PLACE FEBRUARY 16-26, 2023, in Palm Springs, California. This exciting 11-day festival is known worldwide for offering more than 350 diverse programs that highlight Mid Century Modern architecture, interior and landscape design, art and vintage culture.

What visitors may not realize is that most of the compelling programs offered during Modernism Week are produced by partners as a way of raising funds for preservation and restoration objectives throughout the city. Many of the popular tours of neighborhoods are designed specifically to help the communities raise funds to either support civic or community enhancement programs, or to donate to local nonprofit organizations. There is still time to purchase tickets for many of the exciting Modernism Week programs, and this year you may consider choosing those that help support a preservation effort. Here are just some preservation success stories brought to life by Modernism Week.

LEFT WITH AN INNOVATIVE SITE PLAN THAT INCLUDES A TWO-STORY BUILDING FACING E. PALM CANYON DRIVE AND ONE-STORY BUNGALOWS ON THREE SIDES OF THE POOL, GUESTS CAN SELECT FROM SHORT-TERM HOTEL TO LONG-TERM SEASONAL STAYS AT OCOTILLO LODGE.





THE OCOTILLO LODGE

The Ocotillo Lodge opened in 1957 and was designed to bring architectural innovation and the luxury-hotel experience to South Palm Springs.

"The Alexander Company and William Krisel originally built the Ocotillo as a hotel and the gateway into the Twin Palms neighborhood," says Chantel Cruikshank, co-chair of the Ocotillo Lodge Modernism Week committee. "It was a building that was meant to be shared and gather people in the enjoyment of the Palm Springs resort lifestyle. This gives us a chance to do that once again!"

The Ocotillo Lodge tour will showcase eight units, vintage cars and an extensive William Krisel exhibit. "A deejay will be spinning mid-century tunes and there will be appearances by one of the 'Marilyns' of Palm Springs and a Lucille Ball drag queen—both were rumored guests of the Ocotillo," Cruikshank says.

This is Ocotillo Lodge's first year putting on its own solo event—and fundraising for the community could not come at a better time. "Proceeds from Modernism Week will go directly toward our restoration project, which currently includes replacing all the wooden beams and fascia around the complex, repairing our second-story balconies and repainting the building to match William Krisel's original vision," Cruikshank explains.



TOP: WHILE MANY OF THE HOMES HAVE BEEN RETROFITTED FOR YEAR-ROUND LIVING, THE NEIGHBORHOOD'S MID-CENTURY AESTHETIC REMAINS INTACT.

ABOVE: WILLIAM KRISSEL AND DONALD WEXLER DESIGNED THESE INNOVATIVE HOMES TO WELCOME THE DESERT SUN AND OPTIMIZE SHADE.

RACQUET CLUB ESTATES

One of the largest and most iconic neighborhoods in Palm Springs, Racquet Club Estates is a marvel of mid-century design. "Our neighborhood consists of 550 mid-century homes built in 1959-1960. They are either one of five versions of the Alexander company designed by William Krisel or versions of a similar design by Jack and Bernie Meiselman," says Denny Adams, president of Racquet Club Estates Neighborhood Organization.

Racquet Club Estates Neighborhood has been involved with Modernism Week for over a decade, with their first official collaboration in 2010. Six homes will be open for viewing, displaying their butterfly roofs, breeze-block walls and vibrant pops of color. Vintage cars will be displayed at each home on the tour. "Modernism Week is an educational and fun event for both visitors and our community. It provides a unified platform for our charity events and attracts a large audience," Adams says.

Proceeds from this tour will fund projects benefiting the neighborhood and the Palm Springs community at large. "We donate the proceeds of our Modernism Week events to various local charities that have, in the past, included academic scholarships, our local park and elementary school projects, local food bank and shelters, the animal shelter, and both the police and fire-department retirement funds," Adams says.

MODERNISM WEEK

BENEFITS STUDENTS

In addition to helping partner organizations raise funds to support preservation projects, Modernism Week helps Coachella Valley students by annually funding scholarships.

By Bob Bogard

In 2021, Modernism Week continued to support its long-standing scholarship program by awarding seven scholarships to deserving Coachella Valley students who have chosen educational paths in the fields of architecture and design.

The scholarships, which totaled \$35,000, include matching funds from One Future Coachella Valley, an organization that supports Modernism Week scholarship recipients in navigating the college experience to assure the students will succeed in college, career and life, ultimately expanding and enhancing the local workforce. Since the Modernism Week scholarship program was initiated in 2011, more than \$230,000 has been awarded.

In 2022, Modernism Week also provided a \$500 grant to the Visual Communications Program at Nashville State City College (NSCC). The grant provided seed funding for a student chapter of the AIGA (American Institute of Graphic Arts), the most lauded national professional graphic arts organization. Students in this program participated in a promotional poster design assignment, designing mock-up festival posters and promotional graphics for their portfolios to give the students real-life professional career experience. Modernism Week was the subject of the student assignment.

"Giving back to the community is one of the most important aspects of Modernism Week," says CEO Lisa Vossler Smith. "Our Board of Directors and staff are committed to partnering with community organizations to help them generate revenue through event ticket sales. We are especially pleased to award annual scholarships to deserving local students. Supporting talented designers from the Coachella Valley is a top priority and one of the many ways that Modernism Week invests in the community."



TOP: THE MOST RECENT RESTORATION PROJECT WAS THE COLORFUL ACRYLIC PANELS ON THE EAST POOL PAVILION. **ABOVE:** "PARK IMPERIAL NORTH IS A PERFECT EXAMPLE OF THE POST-AND-BEAM CONSTRUCTION OF MODERN LIVING, WITH ITS SIGNATURE EXTERIOR BEAMS ALLOWING A WALL OF WINDOWS ON EACH UNIT," BERGE SAYS.

PARK IMPERIAL NORTH

Park Imperial North is a prime example of post-war multi-family residences that capture the sunny aesthetic of mid-century Palm Springs. Designed by Barry Berkus in 1961 and built by prolific developers Jack Meiselman and Richard L. Weiss, Park Imperial North features 51 units set among desert landscaping and centered around two large vintage pools. This is only the second time that Park Imperial North will be open to the public, with the first tour having taken place in 2020.

"Modernism Week is our opportunity to highlight the Palm Springs Mid Century Modern design and is our way to giving back to the community we love," says Jon Berge, director of the Park Imperial Community Association. The tour allows guests to explore the 4.5 acres of Park Imperial North, including vintage pools and pavilions, and tour six prestigious homes. "Re-educating the public about Mid-Century design at Modernism Week allows the new owners to show the wonderful ways you can combine vintage with modern design," Berge says.

Proceeds from this tour support the restoration of the historical and mid-century details of the community. "Park Imperial North was able to purchase and unify the exterior front light fixture with funds earned by the first tour," Berge explains. The proceeds from this year's tour will allow the community to restore the west pool pavilion, two outdoor showers and landscaping in common areas. ☺



featuring
CLEMENTINE COLLECTION

Nobody puts
this baby
in a corner

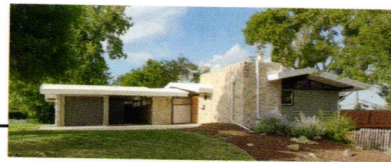


Casara Modern

casaramodern.com 714 317 9342

Handcrafted in the USA

Custom HOME PORTRAITS



We all love the places we call home. We choose the colors, the furnishings, and the artwork that make our homes unique expressions of ourselves.

Let's work together to create a one-of-a-kind illustration highlighting what you love about your home!

*Get to know your home
in a whole new way.*



1959 BETTER HOMES & GARDENS IDEA HOME
DONALD HONN, AIA & BRUCE SUTHERLAND, AIA - ARAPAHO HILLS

CHRISTIAN MUSSELMAN

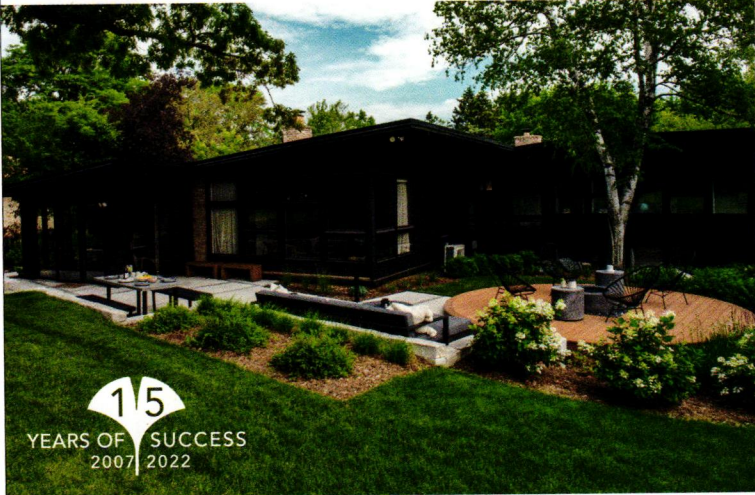
Illustration

christianmusselman.com

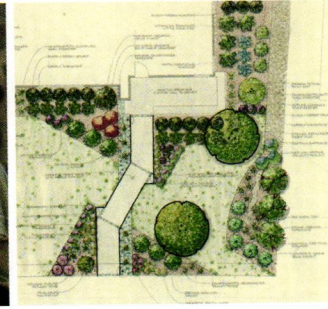
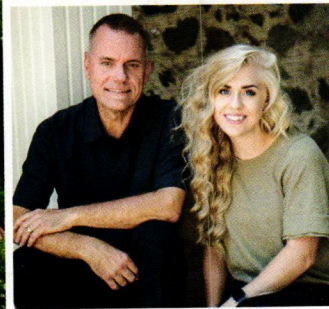


ginkgo leaf studio

LANDSCAPE DESIGN



15
YEARS OF SUCCESS
2007 2022



Providing landscape design throughout the United States

ginkgoleafstudio.net

262.376.5050

MILWAUKEE WI • BOZEMAN MT



SmartFurniture®

everything you need for your
modern home and home office

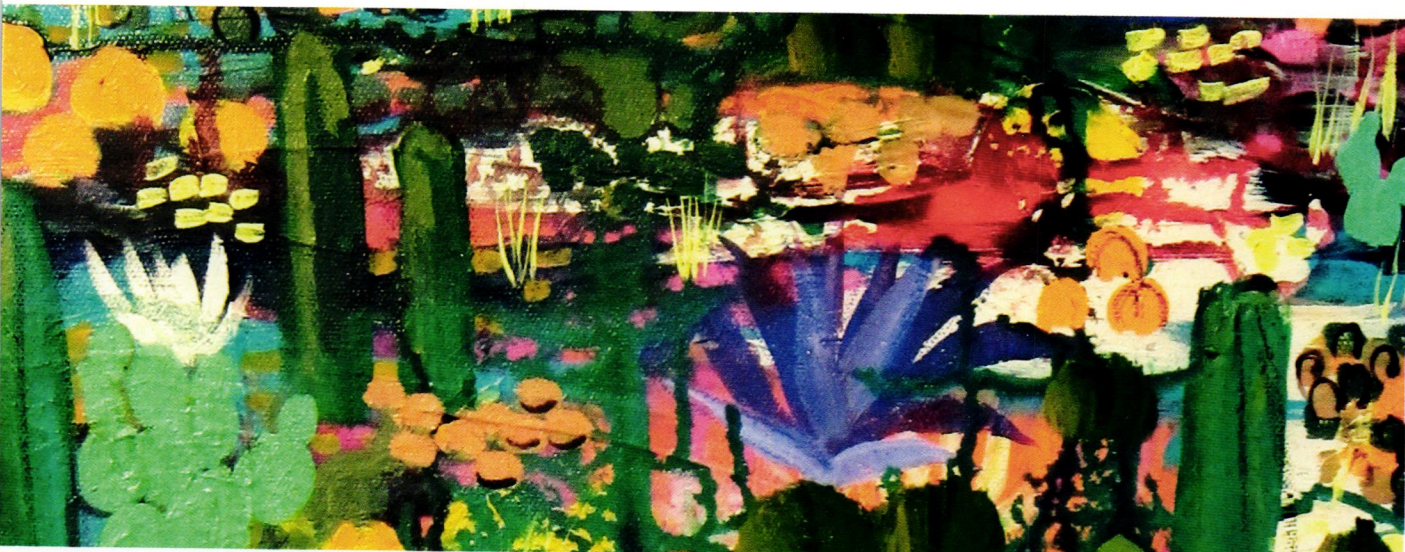
smartfurniture.com



FAST FREE SHIPPING

INDUSTRY DISCOUNTS

HAPPINESS GUARANTEE



Jillian Gamble Fine Art



@JILLIANGAMBLE
 JGAMBLE.FASO.COM
 JILLIANRAEDESIGNS@GMAIL.COM



Weldtex

COMBED TILES & PANELS

ACCENT WALLS • SIDING • WAINSCOT • CEILING TILES



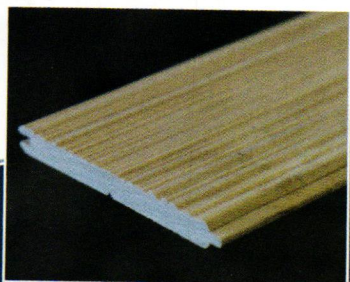
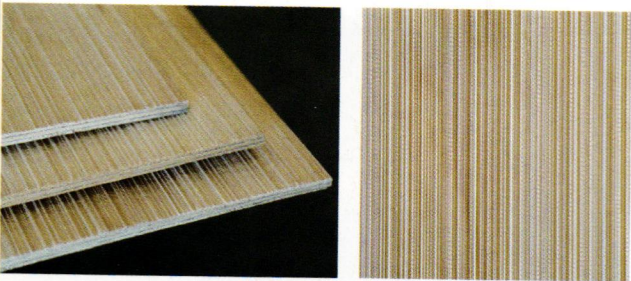
WELDTEX IS BACK FROM THE MID-CENTURY!
 Need to replace original tiles or panels? Or, want to add mid-century modern flair to your home? Vintage Plywood's Weldtex plywood & hardwood products are near perfect replications of the original!

PLYWOOD

- » 3/8" Monterey Pine Plywood • Paint-grade
- » Tiles: 11 7/8" x 11 3/8" 15 7/8" x 15 7/8" 23 7/8" x 23 7/8"
- » Panels: 15 7/8" x 48" 15 7/8" x 96" 23 7/8" x 48" 23 7/8" x 96"

HARDWOOD

- » 3/4" Tongue & Groove • Various Lengths • Stain-grade
- » Species: Alder Cherry Maple Poplar Red Oak White Oak



VINTAGEPLYWOOD.COM



www.carolestes.com

cestesnowlin@gmx.com

<https://themarshallgallery.com/>



Vibrant, Large Acrylic Paintings and Exciting Abstract Surfboards Art and Design.

Come see me at my booth at the 2023 Palm Springs Modernism **Modern Design Expo** Feb 17th thru 20th (Palm Springs Convention Center)

Receive a free pillow for mentioning **Atomic Ranch Magazine!**

I donate 5% of each of my sales to New Day Youth & Family Services to help homeless students <https://www.ndnm.org>

And to the National Indian Youth Leadership Project which helps Indigenous youth



Donate / NIYLP
Projectventure.org



How can you keep Mid Century Modern style alive?

Know your home's history and character before you remodel. Remodel while also preserving everything you love. Our book teaches you to do both: It's time to style your home and keep its history alive.

Remodeled Marvels: Your Guide to Understanding, Planning and Designing Your Next Mid Century Modern Transformation

Order your copy today at

atomic-ranch.com/merchandise/atomic-ranch-book

BLACKWELL



WOODWORKS

HANDMADE
CLOCKS AND
DECOR MADE
ENTIRELY FROM
UP-CYCLED
GUITAR SCRAPS!



BLACKWELLWOODWORKS.COM



B&W Tile

Vintage Original Since 1949



Colors We Have Those!!

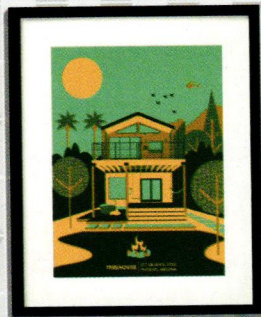
Come visit us www.bwtile.com

Call us 310-538-9579

Email us info@bwtile.com



HANDCRAFTED TILE MADE IN PORTLAND, OR
www.clayhaustile.com | order direct at 503.928.3076



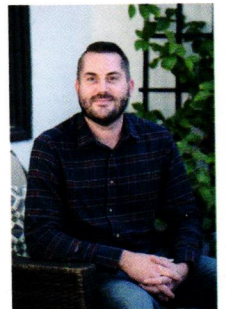
post & beam

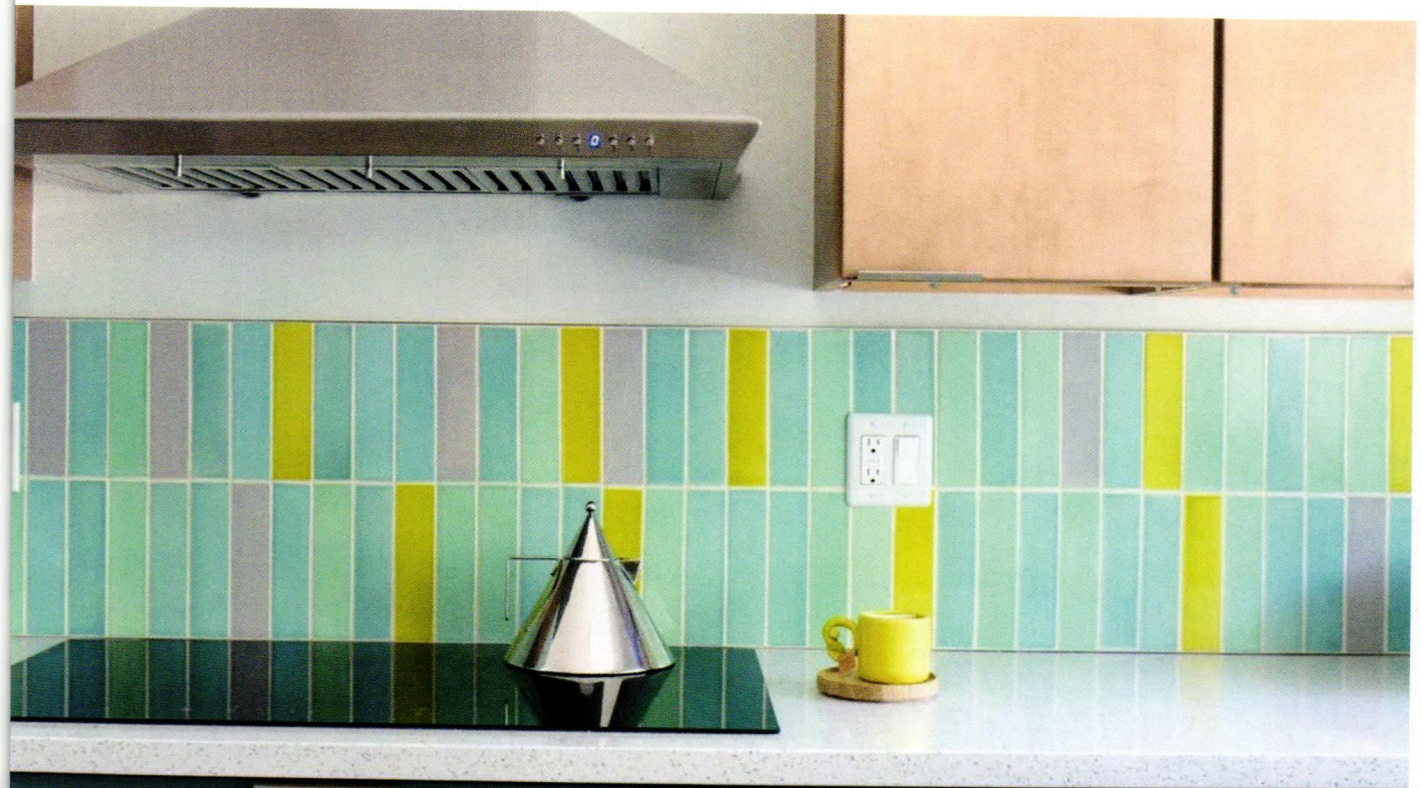
With a keen eye for design, and a mid-century palette, Aaron Stouffer has been illustrating architectural icons since 2014.

Make your home iconic.

Limited Series Artworks
 Customized Home Illustrations

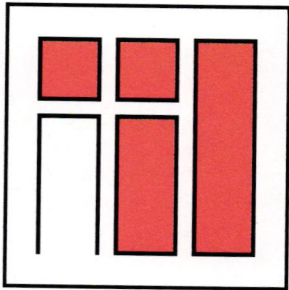
Postandbeamaz.com
Postandbeamaz@gmail.com





 **modwalls**[®]

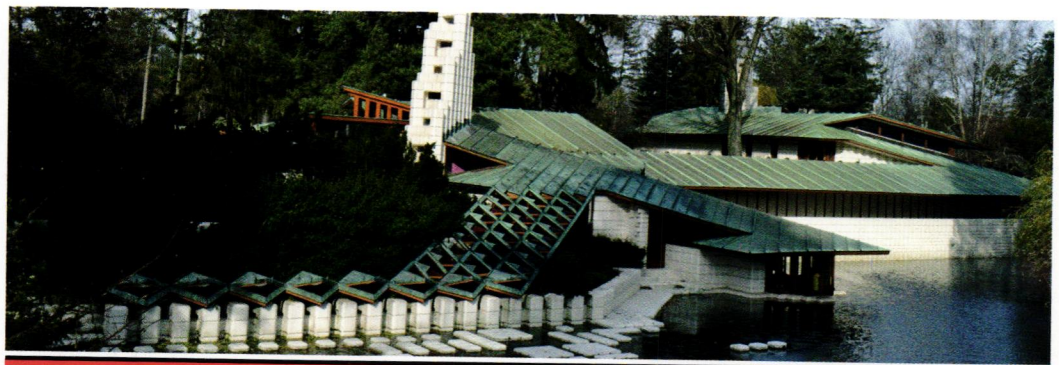
MIDCENTURY TILE
 modwalls.com 877-439-9734



ALDEN B. DOW
 HOME & STUDIO

315 POST STREET
 MIDLAND, MI 48640

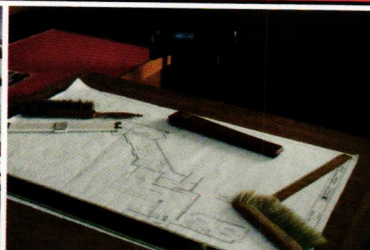
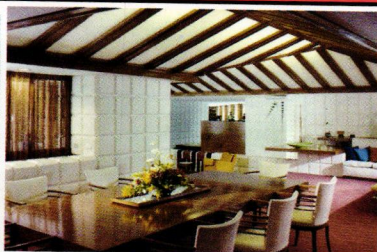
(866) 315-7678
 abdow.org

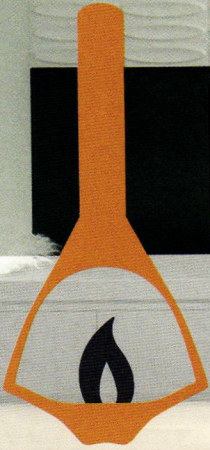


The Best of Mid-Twentieth Century Modern Architecture

The Alden B. Dow Home and Studio engages the imagination and elicits emotional responses in all who experience this powerful statement of Mid-Twentieth Century Modern architecture. Planted into an encompassing pond, the Home and Studio is alive with reflective light, soaring roof lines, diverging angles, brilliant color and the perfect balance of enticement and tranquility. It truly is an "oasis of architecture and inspiration."

Schedule your visit for architectural tours, educational programs, Michigan history and much more.





modernous
INTERIOR DESIGN

modern + midcentury specialists
modernous.com
206.430.1966

CHRIS WHEELER
pergamena fine art

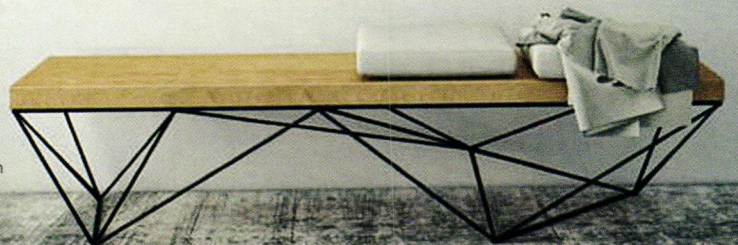
Chris Wheeler
Modern mid-century collage artist

Showing at the Palm Springs Modernism
Show and Sale Feb 18-20, 2023

Original artwork and prints available at
PergamenaFineArt.com
Use code AR23 for 10% off



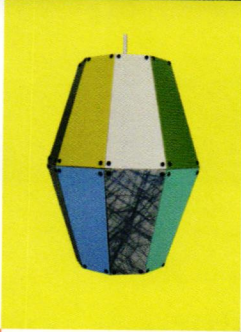
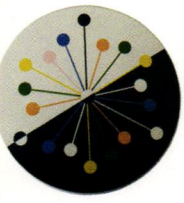
acrylic and paper collage on wood panel



206.730.1433 | @ChrisWheeler_99 | Chris@PergamenaFineArt.com

Hip Haven

RETROMODERN
DECOR



HIPHAVEN.COM

(512)462-4755
info@hiphaven.com



JEAN SMITH
CERAMIC SCULPTOR



Mid-Century inspired sculptures with a contemporary vision

All hand-made in USA; produced in my studio with love and care

FIND OUT MORE AT:

www.jeanbsmith.com

Instagram: [jeanbsmith13](#) | Email: jbsarts@aol.com

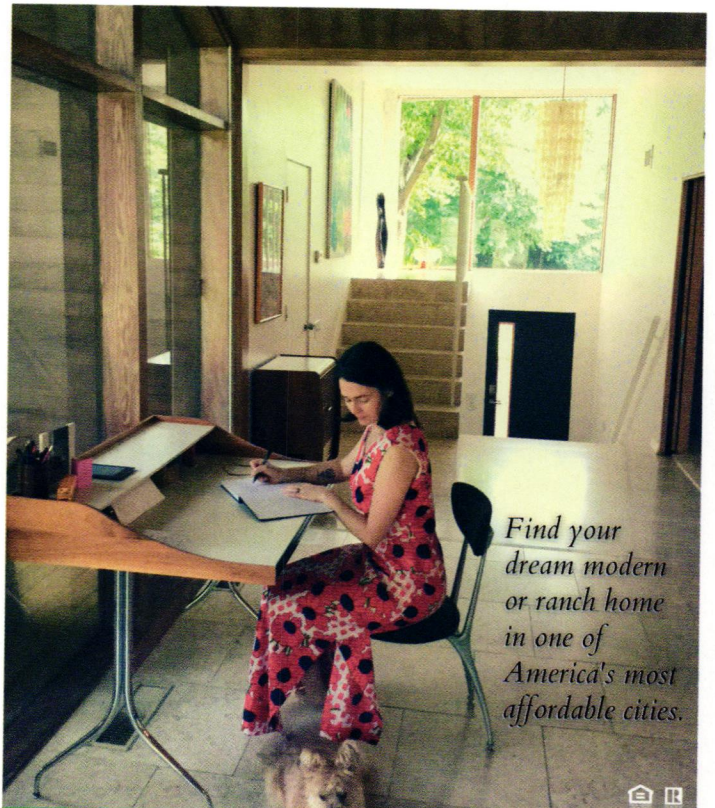


Get your groove on



New decor tile in 1970s shapes & colors

www.makeitmidcentury.com



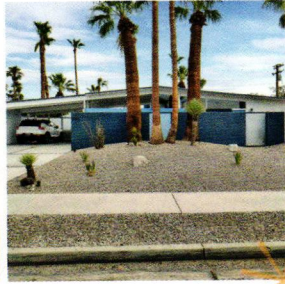
Find your dream modern or ranch home in one of America's most affordable cities.

CRYE-LEIKE, MARGARET MIKKELSEN
REALTORS® *modern memphis homes*

margaret@modernmemphishomes.com
office: 901-754-0800 mobile: 646-898-6901

Paul*Kaplan GROUP

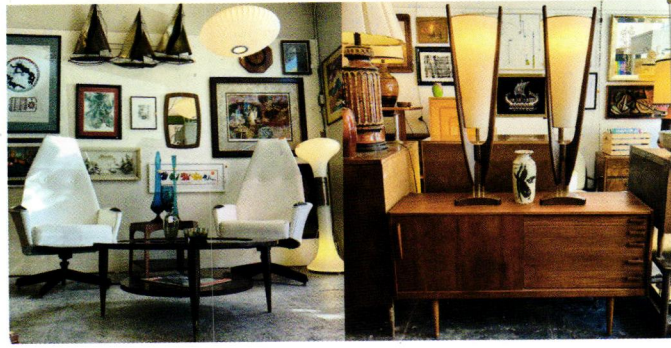
Palm Springs Midcentury
Real Estate Experts



Representing Unique Architectural
and Mid-Century Properties



PaulKaplanGroup.com * 760.459.1396 DRE# 01325586



San Diego's
mid-century
one-stop shop

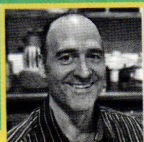
midcenturystore.com
619-295-4832



Your Chicago-Area
Mid-Century Modern &
Ranch Homes Specialist



MODERN
ILLINOIS
modernil.com

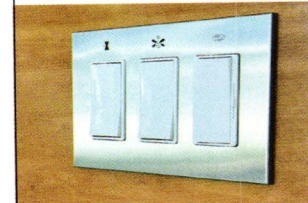
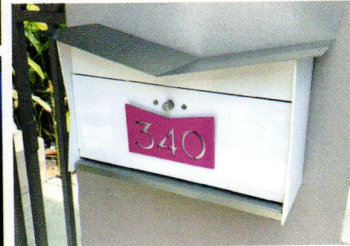
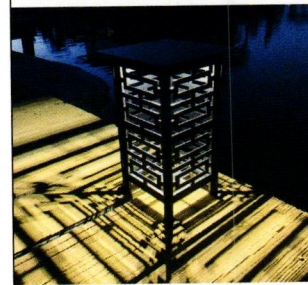
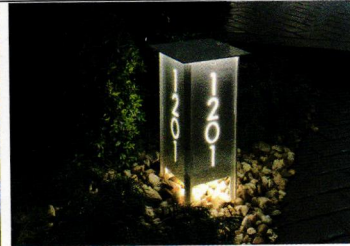
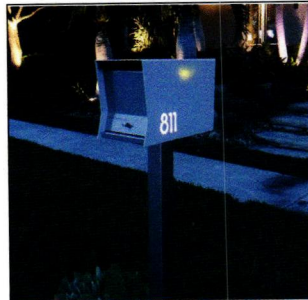


Lou Zucaro

lou@modernil.com • 312.907.4085

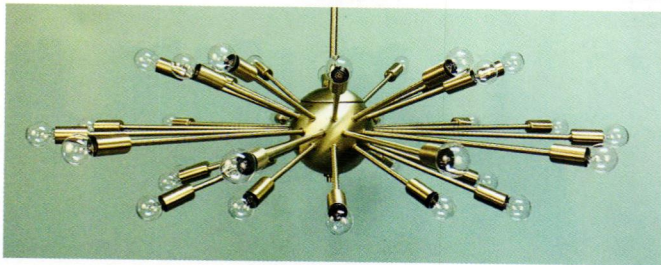
Baird & Warner

754 W. Northwest Highway, Barrington, IL 60010



tedstuff modern. elegant. fun
tedstuff.com

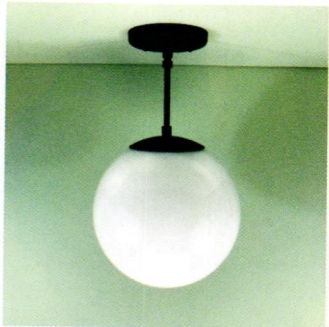
Practical P R O P S



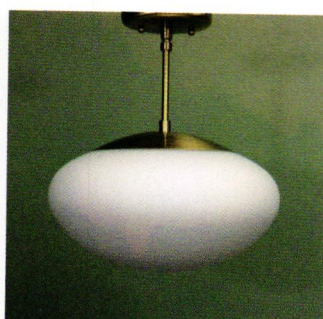
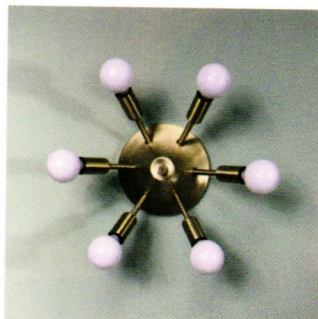
*Specializing in Authentic, Quality
Midcentury Reproduction Lighting*



*Pendants - Sputniks - Flush Mounts
Interior & Exterior Sconces
Bath Lighting - Floor & Arc Lamps
Desk, Table & Bedside Lamps
Restored Vintage Lighting*



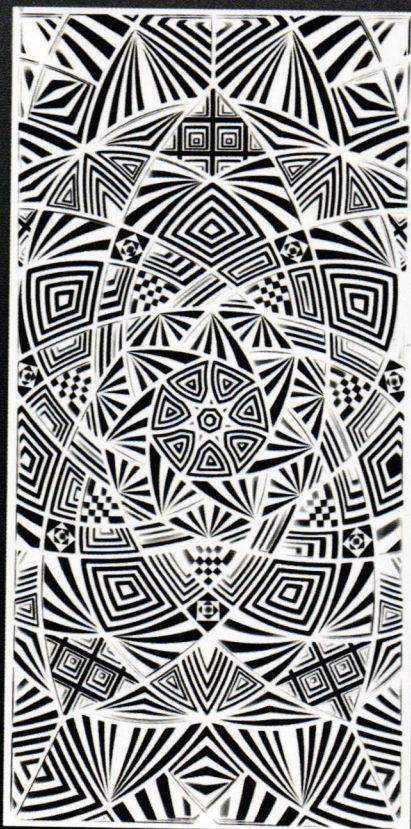
Family-Owned & Operated since 1991



shop.PracticalProps.com



erichmeager.com
erichmeager.com



Enter discount code **ATOMIC** to
receive 20% off your first order.



modernism week®

In Palm Springs, California

February 16-26, 2023

Architecture Tours by Modernism Week October–May

Tickets and Information modernismweek.com



Sponsors as of December 8, 2022. Photo by Taso Papadakis.

Major

Grand

Civic Presenting

Premier

Platinum

Mec



atomicadvertisers

ACCESSORIES & ARTWORK

Art of Scooter 13
artofscooter.com

Atomic Mobiles 87
atomicmobiles.com

Blackwell Woodworks 77
blackwellwoodworks.com

Carol Estes 76, 87
carolestes.com

Christian Musselman Illustration 73
christianmusselman.com

Crossgrove Studio 86
505-395-6624
crossgrovestudio.com

Dolphin Fairs 67
dolphinfairs.com

Erich Meager 83
erichmeager.com

Hip Haven 81
512-462-4755
hiphaven.com

JBS Arts 81
jeanbsmith.com

Jillian Gamble Fine Art 75
jgamble.faso.com

John Moran 63
626-793-1833
johnmoran.com

Matthew Pierce Fine Art 57
matthewpiercefineart.com

Matthew Smith Studios 88
matthewsmithstudios.com

Matthews Fan Company 47
matthewsfanco.com

Minty's Design 89
MintysDesign.com

Pergamena Fine Art 80
pergamenafineart.com

Post & Beam 78
postandbeamaz.com

Rubine Red Gallery 59
760-537-7665
rubineredgallery.com

Submaterial 17
submaterial.com

TedStuff 82
561-272-0770
tedstuff.net

The Shag Store 23
760-322-3400
shagstore.com

DESIGN RESOURCES & BOOKS

Asheford Institute of Antiques 89
877-444-4508
asheford.com

INTERIOR & EXTERIOR DESIGN & FINISHES

American Tile Makers/B&W Tile 77
atomicmobiles.com

Clayhaus 78
503-928-3076
clayhaustile.com

Design Collaborations 15
520-623-8068
designcollaborations.com

Ginkgo Leaf Studio 74
262-376-5050
ginkgoleafstudio.net

Make It Mid Century 81
makeitmidcentury.com

Modbox USA, Inc. 88
919-332-0894
modboxusa.com

Modernous 80
206-430-1966
modernous.com

Mod Floors 5
760-636-4135
modfloors.com

Nana Wall Systems Inc. 8
800-873-5673
nanawall.com

Shields Residential 45
shieldsresidential.com

Smart Furniture 74
smartfurniture.com

Vintage Plywood Millworks 75
415-883-5300
vintageplywood.com

LIGHTING

Lumens 92
855-210-4486
lumens.com

Practical Props 83
818-980-3198
shop.practicalprops.com

Remcraft 89
800-327-6585
atomicremcraft.com

MID-CENTURY REALTORS & HOUSE TOURS

Alden B. Dow Home & Studio 79
866-315-7678
abdow.org

COMPASS - Beth Cummins 87
636-248-3493
bethcumminsproperties.com

Margaret Mikkelsen 81
901-896-2992
modernmemphishomes.com

Mid Century Homes 19
mid-centuryhomes.com

Midcentury Communities 2-3
midcenturycommunities.com

Modern Homes Portland 88
971-285-7955
modernhomesportland.com

Modern Homes Realty 11
650-380-5512
modernhomesrealty.com

Modern Illinois 82
312-907-4085
modernil.com

Paul Kaplan Group 82
760-459-1396
PaulKaplanGroup.com

Talia Freedman & Co. 88
505-263-7892
ABQ-Realty.com

MODERN FURNISHINGS

3Rail Studio 87
833-463-7245
3RailStudio.com

Casara Modern 73
714-317-9342
casaramodern.com

Elmira Stove Works 65
800-295-8498
elmirastoveworks.com

H3K Home+Design 21
760-325-5400
h3khome.com

Kerf Design 91
206-954-8677
kerfdesign.com

Loll Designs 9
lolldesigns.com

Modwalls 79
877-439-9734
modwalls.com

OUTDOOR LIVING

Master Spas 35
masterspas.com

Modfire LLC 89
855-663-3473
modfire.com

VINTAGE STORES & FURNITURE REHAB

Evans Family Company – Fagas Straps 86
858-461-8069
fagasstraps.com

Mid Century Store 82
619-295-4832
midcenturystore.com

Vintage Vault 69
vintagevaulttulsa.com

resources

Sleeping Beauty

Page 16

To see more from H3K Home+Design, visit h3khomeanddesign.com or follow them on Instagram @h3kdesign.

A Happy Place

Page 20

To see more from Studio Gild, visit studiogild.com or follow them on Instagram @studiogild.

Appliance hardware: Knurled Appliance Pull from Schoolhouse Electric; schoolhouse.com

Art: Custom commissioned piece by Halle Siepman; hallesiepman.com

Cabinet hardware: Loop Handle & Trunk Hardware; superfront.com

Orb counter stools: West Elm; westelm.com

Pendant lights: Half & Half Pendant Cones from Roll and Hill; rollandhill.com

Raising the Bar for a Timeless Renovation

Page 24

To see more from Lane Williams Architects, visit lanewilliams.com or follow them on Instagram @lanewilliamsarchitects.

Spinning the Color Wheel

Page 36

To see more from Christopher Kennedy, visit christopherkennedy.com or follow him on Instagram @christopherkennedyinc.

Tile in primary bathroom: Bisazza; bisazza.com/usa

Bedding in primary bedroom: Trina Turk; trinaturk.com

Buffet in dining room: Christopher Kennedy Collection; christopherkennedy.com

Wallpaper in girls' room: Osborne & Little; osborneandlittle.com

Tile in kitchen: Heath Ceramics; heathceramics.com

Wallpaper in office: Phillip Jeffries; phillipjeffries.com

Vanity in powder room: Neo-Metro; neo-metro.com/home

Living room sofas: Adrian Pearsall; adrianpearsallstore.com

Looking Through the Glass House

Page 48

Paint: Walls: Swiss Coffee. **Beams:** Weathered Brown. Dunn Edwards Paints; dunnedwards.com

Dining room chandelier: Beautiful Halo; beautifulhalo.com

Behind the Scenes

Page 60

To see more from Shields Residential, visit shieldsresidential.com or follow them on Instagram @shieldsresidential.

Appliances: JennAir; jennair.com

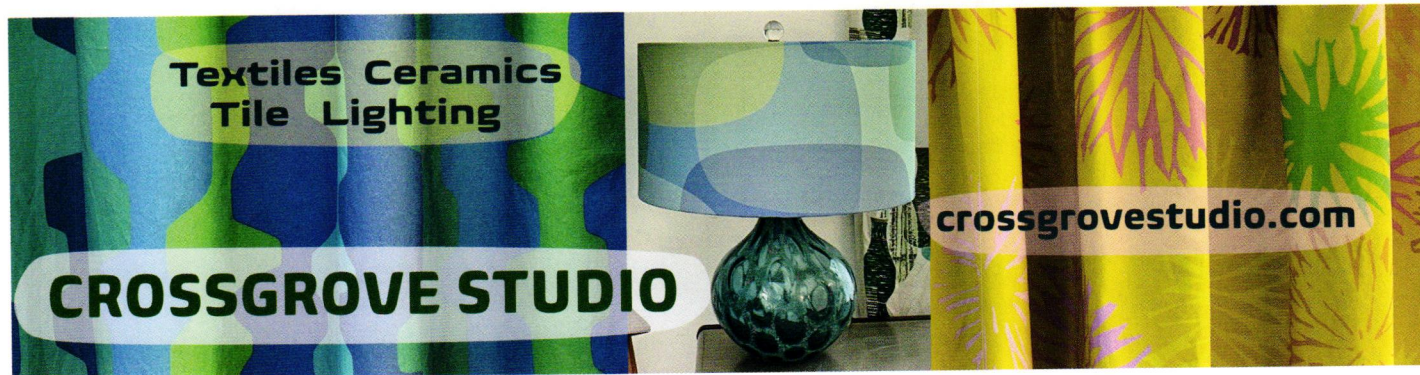
Backsplash: Modern Home Design Showroom; modernhomedesignshowroom.com

Cabinets: Classic Cupboards; classiccupboard.com

Countertops: Corian Quartz; corianquartz.com

Door hardware: Schlage; schlage.com

Paint: Benjamin Moore "Swiss Coffee" (OC-45); benjaminmoore.com



Textiles Ceramics
Tile Lighting

CROSSGROVE STUDIO

crossgrovestudio.com

Official US distributor
since 1945



Replace
broken or stretched
Fagas Straps!

www.fagasstraps.com
info@fagasstraps.com 858.461.8069

Atomic Mobiles

atomicmobiles.com



Proud to be Recognized as
a Top Realtor in the Desert
for the 3rd Year in a Row!

COMPASS



Beth Cummins

REALTOR®

636.248.3493 | DRE 01990421

bethcummins@yahoo.com

bethcumminsproperties.com

Compass is a real estate broker licensed by the State of California and abides by Equal Housing Opportunity laws. License Number 01991628. All material presented herein is intended for informational purposes only and is compiled from sources deemed reliable but has not been verified. Changes in price, condition, sale or withdrawal may be made without notice. No statement is made as to accuracy of any description. All measurements and square footages are approximate.



Pillows by Carol are my new line of art pillows celebrating color & a great way to own functional art in your home ...its huggable !! Each pillow is made of soft (yet durable) 100% polyester & make great accessories for beds, sofas, dorms, gifts & more. Take a pillow along on your road, train, ship, or airline travel. It's a splash of color, a splash of energy with you wherever you go! Every design is reproduced from one of my abstract paintings then printed onto each pillow & signed by me.

"For each pillow sold-I donate \$3.00 to New Day Youth and Family Services to help homeless students." <https://www.ndnm.org/>

<https://carolestes.com/pillows-by-carol-store-1>

Free shipping on pillows using code: **atomic-ranch**

email - cestesnowlin@gmx.com

Mid-Century Pop!



www.3railstudio.com

833.463.7245

Find a cool Mid-Century.
Sell your Contemporary home.

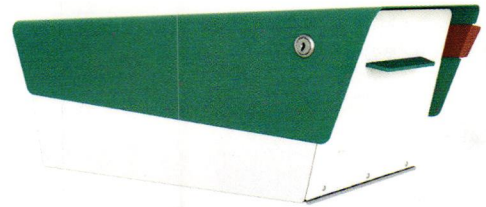


Marisa Swenson
MODERN HOME EXPERT



971-285-7955
Marisa@ModernHomesPortland.com
ModernHomesPortland.com

DWELLREALTY
Licensed OR & WA Broker



NEW LOCKING!

modboxUSA



NEW RECORD HOLDERS!



modboxusa.com | 919.322.0894

Safely Home.



Buying or selling? Call us!

We're here for you.
It's never too early to talk.

Talia Freedman & Co . Albuquerque . NM
505.263.7892 . www.ABQ-Realty.com



Matthew Smith Studios
handmade modern jewelry



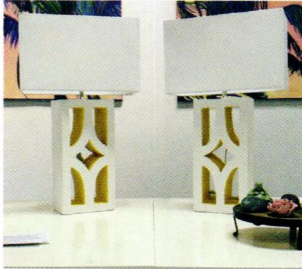
Join our *Studio Insiders*
for 20% off of your first order at
matthewsmithstudios.com



M
**MINTY'S
 DESIGN**



Breeze Block Inspired Creations



MintysDesign.com
Minty@MintysDesign.com

MODERN OUTDOOR FIREPLACES



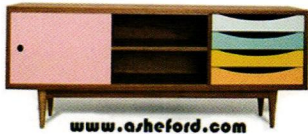
Hand Crafted – American Made

1316 W. Grand Ave. Phoenix AZ. 85007
 855.663.3473 – MODFIRE.COM

**Would You Like To Be
 A Mid-Century Modern
 Antiques Dealer?**

You Can:

- *Start your own Mid-Century Modern Antiques Business
- *Choose the hours you wish to work
- *Become a "Certified" Decorative Arts Appraiser
- *Complete an internationally recognized 12 Volume Course with Diploma & Appraisal Certification (PACC & USPAP)



www.asheford.com

**For A FREE Course Prospectus
 Booklet:**

www.asheford.com

Email: asheford@mail.com

Toll free: 877-444-4508

Or write to:

Asheford Institute: 981 Harbor Blvd.

Ste. 3, Dept. 275ATR29 Destin, FL 32541

REMCRAFT UP-DOWN LIGHTS

Setting the standard...again.



RETRO
 BY REMCRAFT

(800) 327-6585

www.atomicremcraft.com

lastlook



Frank's Place

By Ian McMaster

Photo by Gene Lester/Getty Images

Two Palm Springs legends crossed paths to create an iconic home.

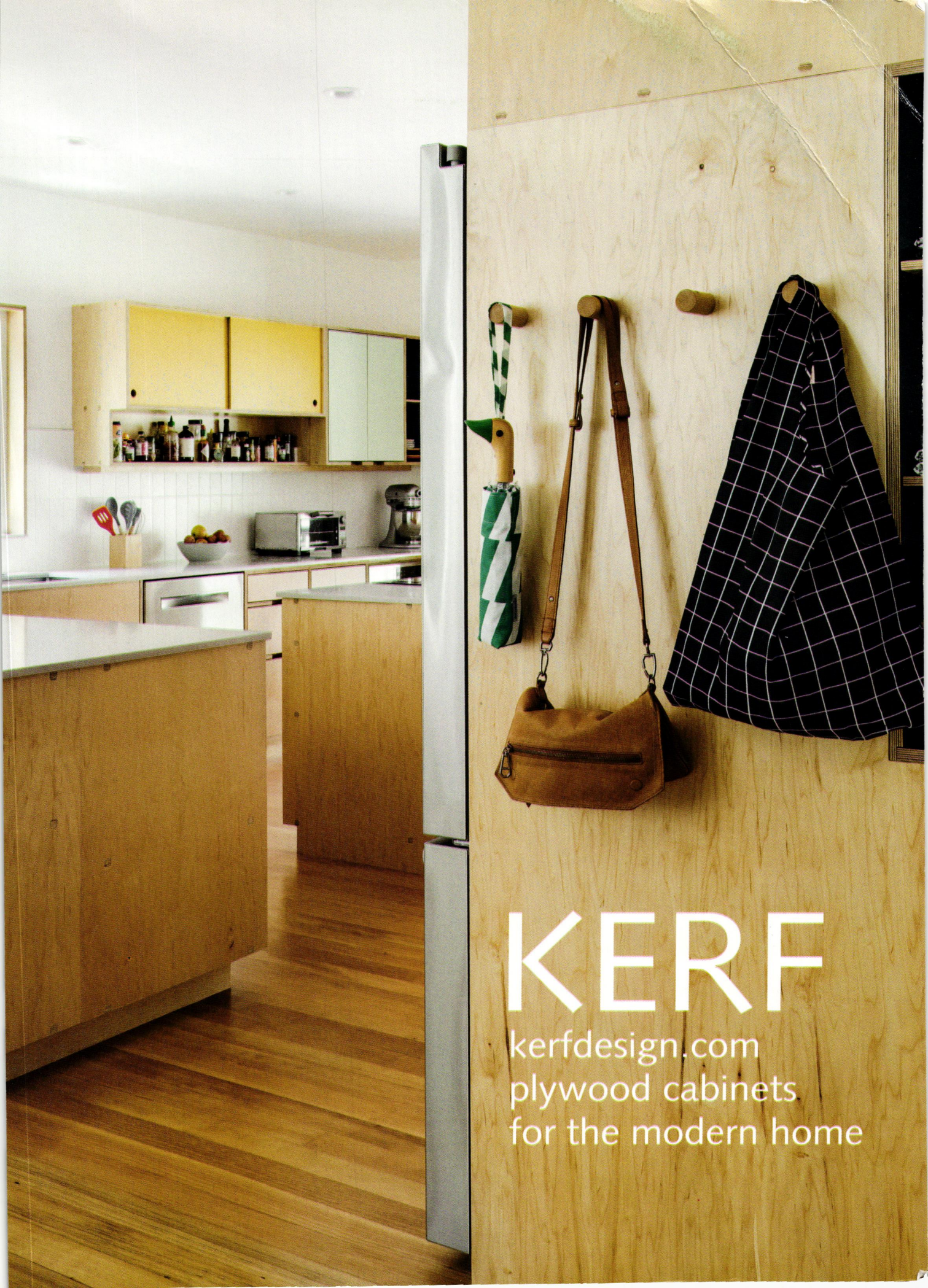
Frank Sinatra first rolled into the architectural offices of Williams, Williams & Williams wearing a white sailor hat and eating an ice cream cone. He wanted a house in Palm Springs—a sleepy town at the time—and he wanted E. Stewart Williams and his two brothers to build it (this was, in fact, Williams' first residential project).

Armed with a windfall of cash from an MGM Studios contract, Sinatra asked for a lavish estate where he and his wife, Nancy Barbato, could escape Hollywood and raise their children. E. Stewart Williams had to overcome two problems at the outset: the home had to be completed in six months—in time for Christmas—and he had to convince the most famous performer in the world his dream home should not be Georgian style.

Thankfully, Williams' rendering for a low-lying, climate-friendly modern home with a shed roof convinced Sinatra to plunk down \$150,000, and construction began around the clock. After a grueling and outrageously expensive build, the house, known as Twin Palms, was completed just under deadline.

Williams' design of Twin Palms would become synonymous with cool architecture, and much like its resident, the house was a trendsetter in the desert. Williams would go on to build iconic homes and commercial buildings in Palm Springs for the next 40 years, including Temple Isaiah (1952), Edris House (1954), Koerner House (1955), The Palm Springs Aerial Tramway Station (1961) and The Palm Springs Desert Museum (1976).

A few years and a divorce later, Sinatra's family getaway turned into a resort for the A-listers of Hollywood. The parties, fights and escapades at Twin Palms became legendary and drew more fame and fortune to the sleepy desert town. Eventually, Dinah Shore, Cary Grant, Estée Lauder, Marilyn Monroe and Tony Curtis would also move into the neighborhood, which would become known as "The Movie Colony."



KERF

kerfdesign.com
plywood cabinets
for the modern home



LUMENS

Enlightened by Design

Lumens.com

Heracleum III LED Chandelier by Moooi • Butterfly Stool by Vitra • Vega Minor LED Bath Bar by Kuzco Lighting