

atomic MID CENTURY MARVELS ranch

Check out
our 1st annual
Curb Appeal
Contest Winner!

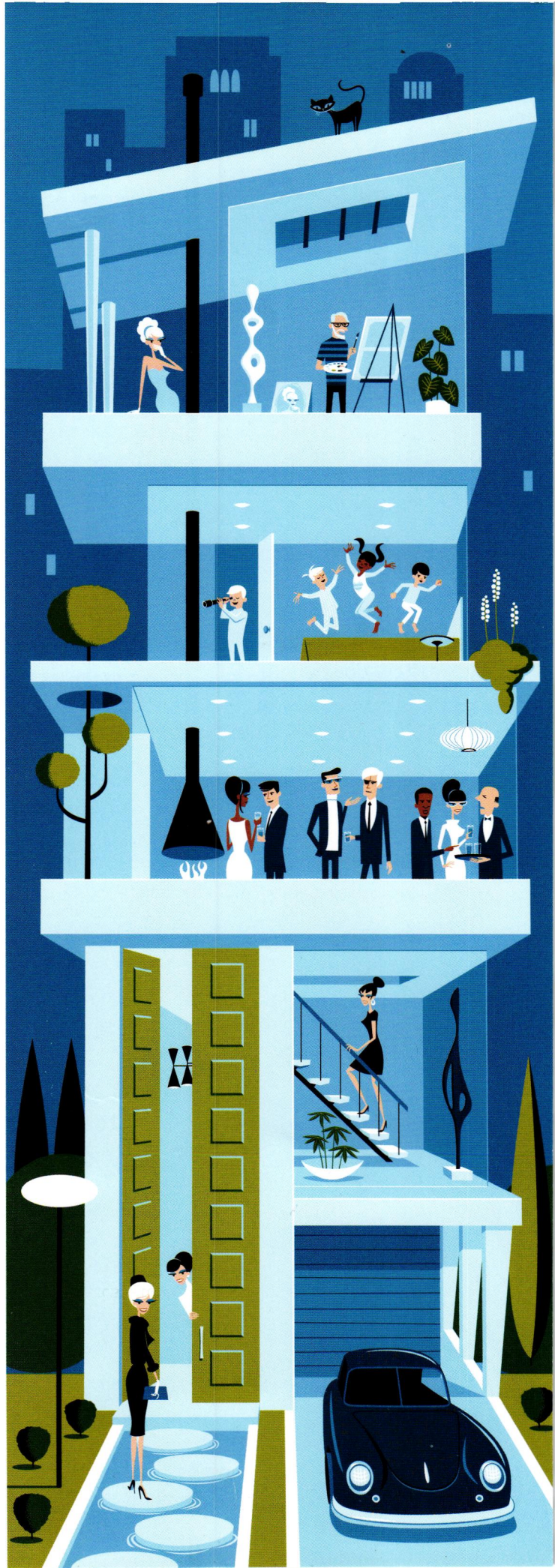


Retro Chic finds
for your backyard

Plus: Mod Remodels in Oregon,
Washington and Virginia

Right: "Villa Verticale," a new 11 color silk screen edition

Below: "Poseidon's Sip," a large scale relief wall sculpture



**FINE ART, BOOKS, GIFTS AND
APPAREL BY THE ARTIST SHAG**

745 North Palm Canyon Dr., Palm Springs

shagstore.com   @theshagstore

Contents Summer 2024

TOURS

30 California's Graceland

Walk the line through Johnny Cash's Ojai home—designed by The Man in Black himself!

44 Pacific Northwest Treasure

The live-in renovation of this early Mid Century Modern home resulted in the perfect blend of period charm and functional updates for a young family.

54 Rescued Ranch

This classic California mid-century ranch was saved from teardown by the new owner who hired a design team to build it up.

64 Authentic & Updated

A custom 1971 ranch house in Oregon gets a handmade restoration that's a mix between authentic and modern mid-century styles.

FEATURES

26 Modernist Artists

These creatives are keeping MCM traditions alive by creating works inspired by—and perfect for—mid mod interiors.

78 Desert Modern

Fit for both calm reflection and vibrant entertaining, this yard combines precise hardscapes with desert-friendly plants to create a stunning exterior.

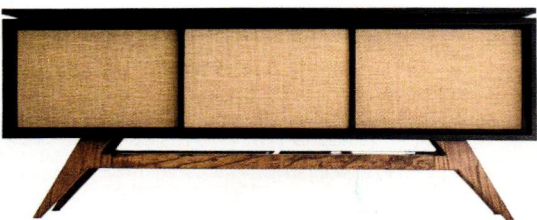
COLUMNS

8 Period Picks

Stylish storage units to hold your records and books.

16 Cool Stuff

Mid Century Modern essentials for a summer soiree in your backyard.

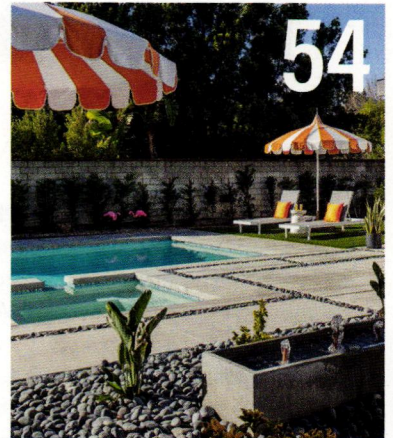


8



DEPARTMENTS

- 4 Editor's Letter
- 6 Curb Appeal
- 10 Retro Road Trip
- 14 Modern Makers
- 18 Atomic Kitchens
- 84 Advertisers
- 86 Web Update
- 88 Resources
- 90 Last Look



cover

Cover photography by Bret Gum
Cover design by Gabby Oh



16



ATOMIC RANCH (ISSN 1547-3902) is published 6 times per year (Spring, Summer, Renovation Guide, Fall, Winter, Design Issue) by EG Media Investments LLC, 3622 Lyckan Parkway, Suite 3003, Durham, NC 27707. Periodical postage paid at Durham, NC, and additional mailing offices. **POSTMASTER:** Send address changes to Atomic Ranch c/o EG Media Investments LLC, ColorArt, 101 Workman Ct., Eureka, MO 63025. **Canadian Post:** Publications Mail Agreement #40612608. Return undeliverable Canadian addresses to: PITNEY BOWES, INC., P.O. Box 25542, London, ON N6C 6B2, Canada. GST #855050365RT001. © 2024 by EG Media Investments LLC. All rights reserved. Reproduction of any material from this issue in whole or in part is strictly prohibited.

editor's letter



AMERICAN IDOL

WHILE IT WAS THE EUROPEAN INTERNATIONAL AND BAUHAUS MOVEMENTS

that truly gave way to the modernist aesthetic, in many ways I can't help but view Mid Century Modern design as an American movement. It's profoundly intertwined with American history, influenced by post-war domestic shifts and forever changed the way we live, work and play. America's Golden Era is solidified by stars in their Cadillacs playing golf in the desert, the optimism of Disneyland and the kinds of technological advancements that gave us the all-electric Golden Medallion homes and the Futuro House, for that matter.

I'm sure many MCM lovers like me find it extra fascinating to see where Mid Century Modern history and celebrity intersect. That's what makes this issue such a unique one. We take a trip to Johnny Cash's recently rescued mid-century home in California's dreamy Ojai—one that he had crafted to his specific design ideas—and see how its new owners lovingly restored it while paying homage to *The Man in Black*. I love seeing how Western flavor and music's lore blend with signature Mid Century Modern elements, the interaction of each telling its own illuminating story of the man who built it. Design truly comes alive most when imbued with our individual tastes, personality and history, as it does in our own homes.

And that's not the only home in this issue with a distinctive past and inspiring present. We tour more homes and special spaces that, thanks to the TLC of dutiful homeowners and honorable designers, have been rehabilitated and refreshed to stand as proud testaments to modernists—then and now.

Jackie Torres

Get connected!

Email: editor@atomic-ranch.com | Online: atomic-ranch.com | [@theatomicranch](https://www.instagram.com/theatomicranch)

atomic ranch

SUMMER 2024 • No. 82

EG MEDIA INVESTMENTS LLC
Rima Dorsey: Managing Director/Publisher

EDITORIAL

Content Director and Brand Leader: Jackie Torres
Managing Editor: Meryl Schoenbaum
Associate Editor: Ian McMaster
Web Editor: Jolene Nolte

DESIGN

Design Director: Gabby Oh
Contributing Designer: Elena Oh

CONTRIBUTORS

Angelina Kaul, Morgan Martinez, Michelle Mastro,
Dana Mauer, Meryl Schoenbaum, Laura Shimko

CONTRIBUTING PHOTOGRAPHERS

Bret Gum, Matthew Gallant, Jess Isaac

ADVERTISING

Suzu Bailey: Account Representative
Leslie Huddleston: Account Representative
Theresa McGrew: Account Representative
Christina Walker: Account Representative
Sebastian Tirkey: Advertising Traffic Coordinator
Vipin Marwaha: Advertising Traffic Manager
For advertising inquiries: rdorsey@egmediamags.com

OPERATIONS

Shailesh Khandelwal: Associate Vice President - Operations
Ayan Chatterjee: Vice President - Marketing
Mohammad Danish: Manager - Subscriptions
Surajpal Singh Bisht: Prepress Manager
Chandan Pandey: Production & Newsstand Circulation Manager

EDITORIAL, PRODUCTION & SALES OFFICE

3622 Lyckan Parkway, Suite 3003, Durham, NC 27707
(844) 330-6373, Fax (972-920-3737)
www.atomic-ranch.com

ATOMIC RANCH (ISSN 1547-3902) is published 6 times per year (Spring, Summer, Renovation Guide, Fall, Winter, Design Issue) by EG Media Investments LLC, 3622 Lyckan Parkway, Suite 3003, Durham, NC 27707. Periodical postage paid at Durham, NC, and additional mailing offices.

POSTMASTER: Send address changes to *Atomic Ranch* c/o EG Media Investments LLC, ColorArt, 101 Workman Ct., Eureka, MO 63025. Canadian Post: Publications Mail Agreement #40612608. Return undeliverable Canadian addresses to: PITNEY BOWES, INC., P.O. Box 25542, London, ON N6C 6B2, Canada. GST #R55050365R001.

© 2024 by EG Media Investments LLC. All rights reserved. Reproduction of any material from this issue in whole or in part is strictly prohibited.

CUSTOMER SERVICE

EG Media Investments LLC
3622 Lyckan Parkway, Suite 3003
Durham, NC 27707

SUBSCRIPTIONS, ADDRESS CHANGES, RENEWALS, MISSING OR DAMAGED COPIES AND FOREIGN INQUIRIES BOOKS, MERCHANDISE AND REPRINTS
(844) 330-6373

subs@egmediamags.com
customerservice@egmediamags.com

BACK ISSUES

<https://engagedmedia.store/>

LETTERS TO THE EDITOR, NEW PRODUCTS OR TO CONTRIBUTE A STORY OR PHOTO
editor@atomic-ranch.com

SUBSCRIPTION RATES

\$29.95/1 year, \$52.95/2 years. Foreign, \$51.95 per year, \$96.95 per 2 years payable in U.S. funds.
Atomic Ranch single copy price is \$9.99;
Renovation Guide and *Design* issue price is \$10.99.
Please allow 6 to 8 weeks for new subscriptions to begin.

SIXSAILS GROUP

Prashant Upadhyaya: Portfolio Manager
Wanda Negron: Human Resources



This magazine is purchased by the buyer with the understanding that information presented is from various sources from which there can be no warranty or responsibility by EG Media Investments LLC, as to the legality, completeness or technical accuracy.



Shop our showrooms or online for fab furnishings!

H3K HOME + DESIGN

501 S Palm Canyon Drive | 74180 Highway 111
 Palm Springs | Palm Desert
 (760) 325.5400 | www.h3khomeanddesign.com

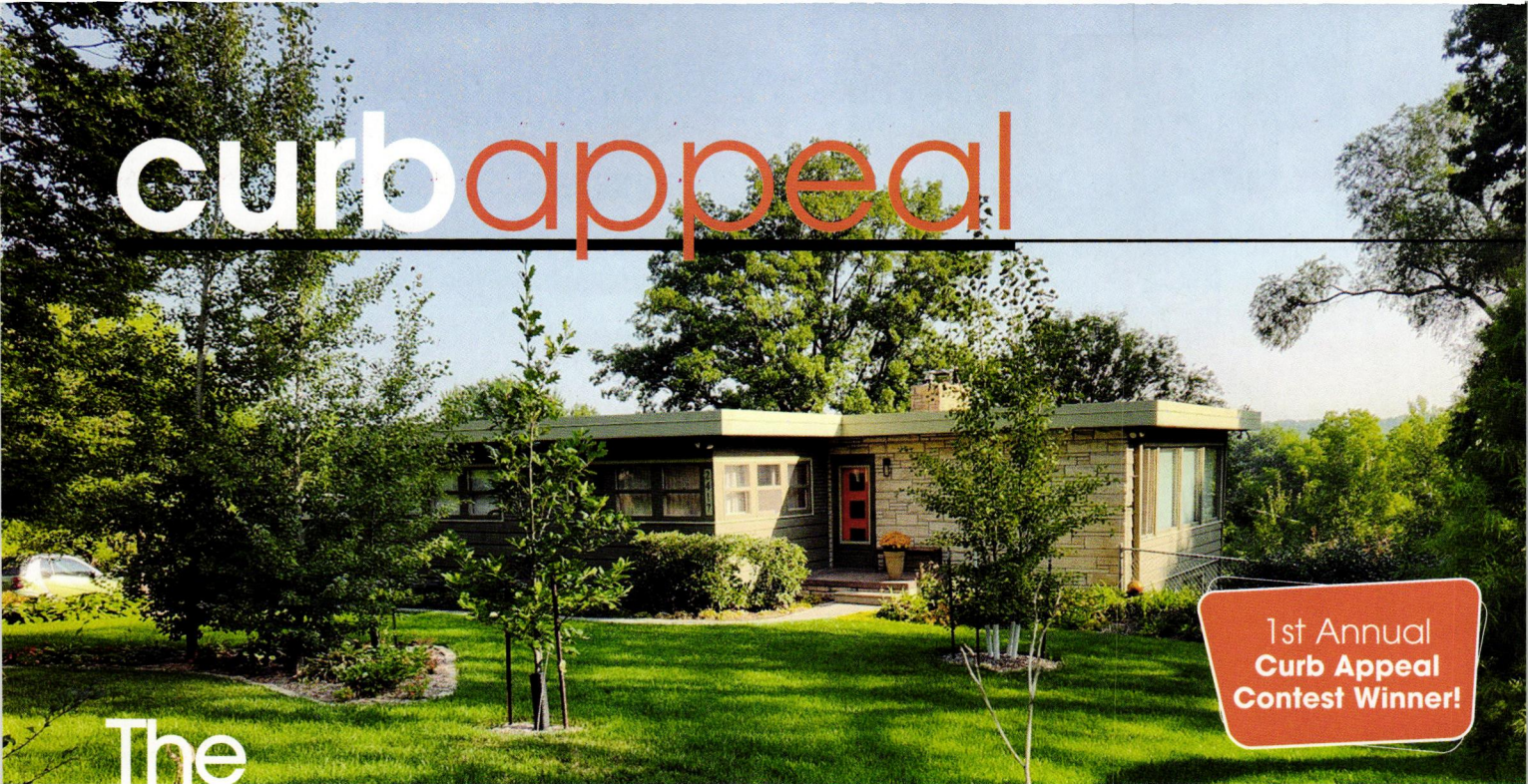
Voted 2023 Best Furniture Store



www.h3khome.com

Use coupon code **Atomic10** and receive 10% off your online order!

curb appeal



The CROWD Pleaser

Mitch and Kim Ernst love the way their home complements the landscape. It isn't the only Mid Century Modern home on the block in the Old Rockbrook neighborhood of Omaha, Nebraska, but they've received compliments on the house for years.

"There are six other flat-roofed, mid-century style homes on just our street alone," Mitch says. "None by famous architects, but by individuals who loved the style and built themselves a home 70 years ago."

BEHIND THE DOOR

Built by Jim Colby in 1953, the home was bought

Our Curb Appeal contest-winning home is wrapped in windows for a variety of views.

By **Dana Mauer** | Photo by **Mitch Ernst**

by Mitch's parents in 1962 and passed down to them. Mitch and Kim updated the kitchen and bathrooms. "We did the demo, we did the prying (and the crying), the flooring, the painting and papering ourselves," Mitch says. "Since there were no MCM cabinets, flooring, etc., in the house, we found the next best thing with Ikea Brukholt cabinets." During the remodel, they discovered a 3-inch poured concrete subfloor in the main bath and 2¹/₄-inch original wood floors in the bedroom but nowhere else.

FROM THE CURB

The exterior needed a fresh coat of paint. "To my wife's credit, she scraped, sanded, filled and painted the entire exterior all by herself," Mitch says. "We chose colors we thought were more organic to our setting and to harken back to the mid-century flavor and taste." The body of the house is Behr Spanish Galleon #760D-6, with trim in Behr Lion #760D-4. The eye-catching front door is Bear Flame 210B-7. Mitch and Kim added a classic mid-century boomerang shape to the yard with tan brick as a border for the aspen trees. "We feel that our house complements our lot and the landscape complements the house in an organic, natural sort of way," Mitch says.

ICONIC VIEWS

Windows are essential in an MCM house—and this one has plenty: 42 of them in the 1,600-square-foot home. "There are 16 windows in the three bedrooms alone," Mitch says, "but it's the living room with its four 6-foot x 6-foot picture windows that really captures your eye from both inside and out." The living room windows are Mitch and Kim's favorite part. "We kept the basic footprint of the floor plan but removed a wall between the kitchen and dining area for a more open feel," Mitch says. They hired plumbers and electricians for the technical work. "Finding the right people who knew how to work in an old house made all the difference," he says. ☺

Siding vs. Cladding

The difference between two often-confused construction materials.

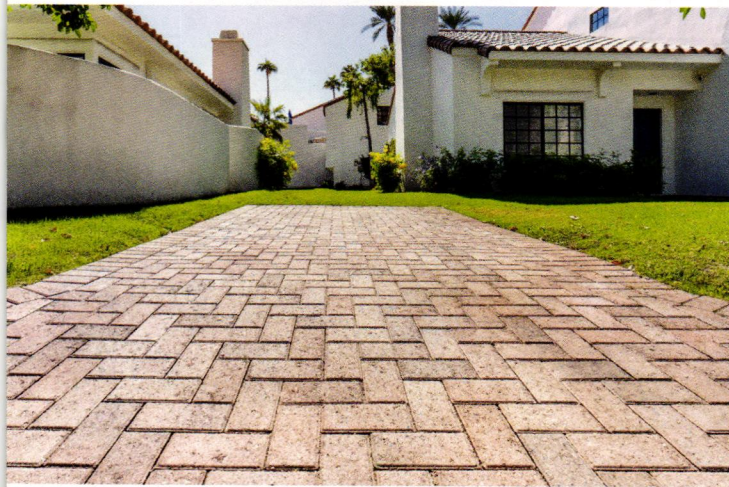
CLADDING: An extra layer on the outside of a building that helps to protect the wall underneath and provide a degree of thermal insulation and weather resistance.

SIDING: The main difference between cladding and siding is that siding boards are applied directly to a wall and can be installed over the insulation and plywood. Cladding can provide extra protection in the form of drainage and a water-resistant barrier.

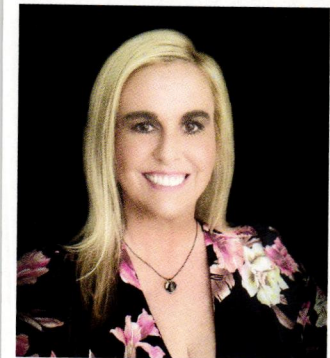
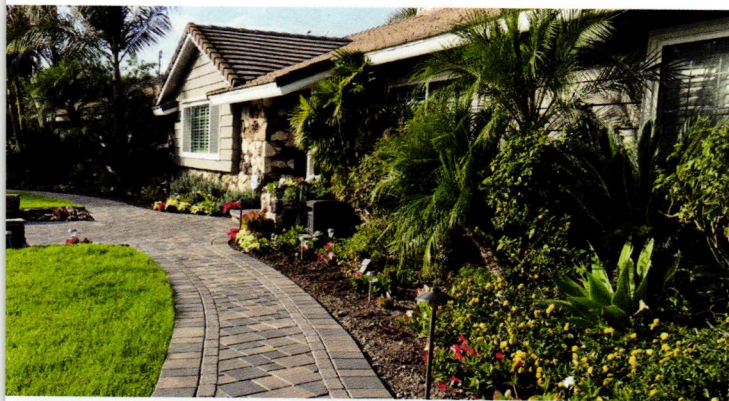
FARLEY

INTERLOCKING PAVINGSTONES

WHY CHOOSE ONE OF CALIFORNIA'S MOST ESTEEMED INTERLOCKING PAVING COMPANIES?



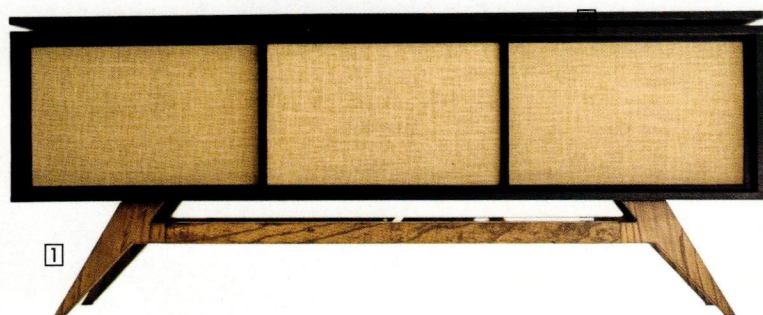
Selecting Farley Pavers to help you clean or replace the pavers for your driveway, pool decks, entries, and streets is a smart decision that offers the best return on investment. Partnering with a skilled and trustworthy company guarantees that you receive the highest quality of service for your money!



farleypavers.com
760-773-3960

We would love to see you in person!
Showroom address:
39301 Badger Street #800
Palm Desert, CA 92211

periodpicks

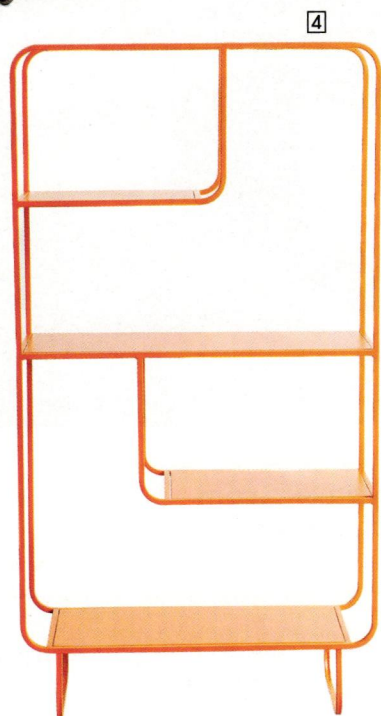


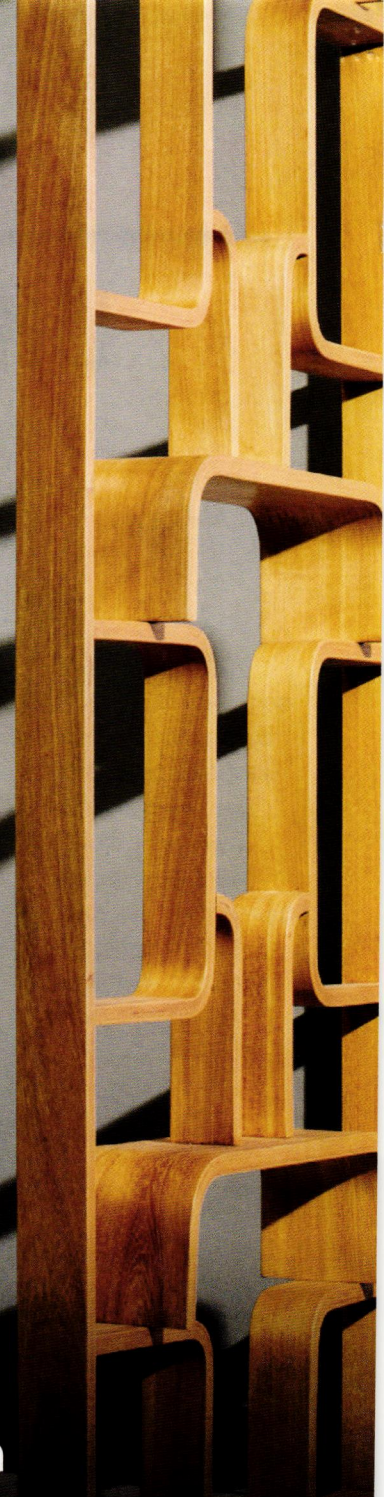
Prized Possessions

Stylish storage units to hold your records and books.

By Ian McMaster

1. **Black Mid Century Modern Contemporary Record Player Vinyl Storage Stand**, \$2,195. Visit modernavenueco.com.
2. **Streamline HiFi "Rambler" model**, \$15,000. Visit streamlinehifi.com.
3. **The Deluxe Tallboy Vinyl Record Storage**, \$300. Visit wickerwoodworks.com.
4. **Alana Bookshelf**, \$299. Visit urbanoutfitters.com.
5. **Index Wall Shelf**, Set of 6, \$1,239. Visit burrow.com.
6. **Retro Mid-Century Bookcase**, \$1,195. Visit abbyson.com.





Consign Today | Art + Design

We are currently accepting quality consignments of Mid-Century & Contemporary art, design, furniture, pottery, bronzes, jewelry, and more for our upcoming auctions.

Auctions • Private Sales • Appraisals

We are a family-owned auction house delivering both world-class service and results for 55 years. For your free auction valuation, or for more information, please contact us at info@johnmoran.com.

JOHN MORAN

AUCTIONEERS & APPRAISERS

Est.
1969

55 Years



Learn More

retro roadtrip

Little MOD HOTEL By Michelle Mastro

Surround yourself in your favorite décor in fun, retro-styled rooms at this rescued property.

THE HOTEL EXTERIOR GOT A FRESH CRISP WHITE COAT OF PAINT TO PERK UP THE BUILDING AFTER LANGUISHING FOR SO LONG AS A DERELICT APARTMENT COMPLEX FOR SO MANY YEARS. THE FOOD TRUCK, THE MOD POD, IS JUST STEPS AWAY FROM THE HOTEL ENTRANCE.



PHOTO BY ANNA KARIEL PHOTOGRAPHY

What was once old can be new again. This is especially true of a 1960s-themed hotel in Charlottesville, Virginia, aptly named the Little Mod Hotel. Guests staying here can bask in the hotel's mid mod aesthetic, complete with retro-style mini fridges, record players (boasting vinyl records, of course) and plenty of nostalgic style that make this hotel a truly distinctive Mid Century Modern gem. But while it feels timeless now, the Little Mod wasn't always so charming.

VINTAGE VIBES

First a hotel, the location was converted into apartments in 1964, only to become a beautiful hotel once again when owner Bill Chapman decided to save it. "The hotel owner used to jog by the building all the time and thought it would be great to restore the hotel back to its glory days," says Jim Shideler,

general manager of the Little Mod Hotel and the Oakhurst Inn.

With its vibrant vintage designs and Atomic-era hues, Chapman wanted to create a one-of-a-kind hotel experience for guests. Every detail of Little Mod was finetuned. "What people rave about the most is our retro style," Shideler says. From the colorful bathroom tile by Modwalls to the multicolored umbrellas on hand in each one of the hotel's 15 rooms, all the hotel's designs were carefully considered. Guests wanting to enjoy the mid mod atmosphere longer can opt for an extended stay in one of the five studio apartments on site. These feature a sitting area and sofa and kitchenette.

For even more 1960s vibes, there's an attached food truck. It's a refurbished airstream that Chapman dubbed the Mod Pod, and it serves tasty breakfast treats and lunchtime street tacos.

J. WILLOTT

GALLERY

EST. 2007



Representing:

Michael Schultheis

Jason Kowalski

Julie Speidel

Adam Normandin

Thomas McKinley

Eric Nash

America Martin

Garo Antreasian

JW
G

JWillott.com 73300 El Paseo Palm Desert, CA 760.568.3180

BLAST FROM THE PAST

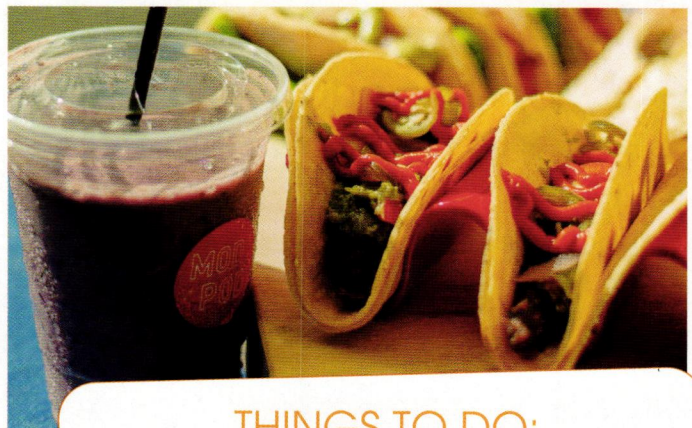
Yet, Little Mod is more than a return to vintage MCM style; it's also a return to a Mid Century Modern mindset about travel. In the 1960s, both roadside hotels and motels were richly individualized, no two were alike, and people loved staying in these iconic architectural feats enhanced by their attention-grabbing neon signs. This was a time before hotel chains dominated the American landscape and everything was much less commercialized.

Jump to today, when many people are starting to prefer themed or boutique hotels again. "Travelers these days are looking for a unique experience when it comes to hotels as opposed to the typical chain with hundreds of rooms," Shideler says. At the Little Mod, guests are sure to have a wonderful time. Even Fido is welcome. "We supply dog beds, dishes and treats," Shideler says. "We cater to creating an interesting experience for all our visitors." ❁

PHOTO BY ANNA KARIEL PHOTOGRAPHY



PHOTO BY ANNA KARIEL PHOTOGRAPHY



TOP LEFT: LIKE ALL THE HOTEL ROOMS, THE LOBBY IS EQUIPPED WITH A RETRO-STYLED RECORD PLAYER AND MANY VINYL RECORDS TO CHOOSE FROM.

TOP RIGHT: LITTLE MOD'S HOTEL ROOMS COMBINE VIBRANT COLORS WITH A RETRO FEEL THAT STILL RECOGNIZES THE IMPORTANCE OF MODERN TECHNOLOGY. FLAT-SCREEN TVS AND THE OPTION OF A KEYLESS ENTRY ARE SUCH CONTEMPORARY TECH THE HOTEL INCLUDES FOR ITS GUESTS.

ABOVE: THE BOLD COLORS IN THE MOSAIC TILE FROM MODWALLS IS A STANDOUT FEATURE. IT REACHES ALL THE WAY TO THE CEILING TO MAXIMIZE THE POPS OF ATOMIC-ERA COLOR SCHEMES.

ABOVE RIGHT: STEPS AWAY FROM THE HOTEL IS THE LOCALLY BELOVED FOOD TRUCK, THE MOD POD, MADE FROM A REFURBISHED AIRSTREAM. BREAKFAST AND LUNCH, COMPRISED OF HANDHELDS LIKE UNIQUE STREET TACOS, SMOOTHIES AND SANDWICHES, ARE SERVED DAILY.

THINGS TO DO: Charlottesville

Here are some must-see spots Jim Shideler recommends around town.

- 1. Thomas Jefferson's Monticello.** "Charlottesville is known for its historical architecture," Shideler says. And there might be no better place to see it than Monticello. Known for its unique architecture and botanical gardens, Monticello is the historical home of Thomas Jefferson. Private and public guided tours are available.
- 2. University of Virginia.** Little Mod actually sits on "The Corner," a collection of shops and restaurants that into the historic campus of the University of Virginia. "This is another great site to see the area's architecture," he says.
- 3. Fralin Museum of Art.** For those wanting to see art and architecture on the more contemporary side, stop by this museum located steps from the hotel on the university's campus. Rotating art exhibits showcase diverse artists and cultures.

For more on Little Mod Hotel, visit littlemodhotel.com.

easy to clean | all season + all weather | awesomely sustainable

loll
DESIGNS

for the modern lollygagger



Are you an industry professional?
Join our trade program.
loll designs.com/trade

Designed + Made  in Duluth, Minnesota

modernmakers



With a background in engineering, Jon brings his own take to the plant stands that he designs and creates. His process is simple: He sometimes roughly sketches his designs but mostly uses cardboard to create a model. Then, he makes the adjustments to the model until he is satisfied with his creation before applying the results to the wood itself. "The design is created in a way that you can't get it wrong when you assemble it," he says. The three legs of the tripod are held together with two bolts, which makes it super easy for his customers to assemble the plant stands themselves.

Beyond Atomic Designs

Written by **Angelina Kaul**
Photography by **Jon Stroud**

These modern planters sprouted from a passion for plants and woodworking.

Jon Stroud grew up watching his father make beautiful furniture in his basement shop. His great-grandfather made decorative furniture, providing Jon with plenty of ideas to fuel his own creativity and imagination. It was only natural that woodworking became an integral part of his life from a young age.

"I still have special pieces of furniture that were crafted by them, and I am especially thrilled to also have the original tools they used," Jon says.

Jon's passions are obvious in his handmade Mid Century Modern-inspired wooden plant stands. Although Jon builds other home décor products—which is why his wife and co-founder, Jen, aptly named their business Beyond Atomic Designs—Jon's masterful craftsmanship is especially evident in his uniquely designed tripod plant stands.

Apart from watching his father and great-grandfather work when he was a child, Jon also pored over books on architectural design, especially those of cathedrals. As he got older, he found inspiration in everything from classic cars to the geometrical patterns of Mid Century Modern art and illustration. "I used to love the design elements of my childhood home near Niagara Falls, especially those found in my mother's kitchen," he says. Over the years, he has refined his taste from a fascination with the architectural motifs of the Middle Ages to the clean lines and simplicity of Mid Century Modern design.



For more on Beyond Atomic Designs, visit etsy.com/shop/beyondatomicdesigns.



WE MAKE MID-CENTURY DREAMS COME TRUE.

SCAN THE QR CODE TO LEARN MORE



coolstuff

By Ian McMaster

Backyard Bash

MCM essentials for a summer soiree.



Sadie II outdoor bar stool, \$678. Visit westelm.com.



Set of two placemats and coasters \$38, 4-foot round tablecloth, \$96. Visit hazy-sunshine.com.

Breeze Block beverage coasters, \$28. Visit mintysdesign.com.



The Glasses Set, \$146. Visit materialkitchen.com.



Mid Century Modern party platter, \$46. Visit midcenturymoderngal.com.



Mid Century Modern Atomic 50s outdoor-dining cloth napkin set, \$39.99. Visit midcenturymoderngal.com.



Legacy 54-quart cooler, \$199.99. Visit igloocoolers.com.

MIDMOD
COLORADO



*Love Mid-Century Modern
& Mountain Vistas?*

YOU NEED THE DENVER MIDMOD
EXPERT IN YOUR CORNER.

With 13+ years of experience as a Real Estate Broker and over \$135 million in sales in buying, selling and preserving mid-century modern homes in Denver and Colorado, Adrian Kinney is the only choice to find your dream midmod masterpiece in the mile-high city.

His passion and joy in life is helping mid-century buyers buy, sell, design and preserve 6,000+ mid-century homes in the Denver metro area.

READY TO FIND YOUR PERFECT
DENVER MIDMOD?
REACH OUT TODAY!



Adrian Kinney

INDEPENDENT BROKER - MIDMOD COLORADO
adrian@midmodcolorado.com
303.219.0629
www.midmodcolorado.com

atomickitchens

Trendsetting Tastes

A kitchen remodel brings together bold materials and exciting design elements in a seamless and functional way.

By **Ian McMaster**
Photography by **Jess Isaac**

"THE KITCHEN DESIGN IS VERY COHESIVE WITH THE REST OF THE HOME," SAYS INTERIOR DESIGNER GABRIELLE AKER. "I ALWAYS OPT FOR COHESION OVER MATCHING SO THERE'S A CLEAR THROUGHLINE, BUT EACH ROOM HAS ITS OWN PERSONALITY AND INTRIGUE."





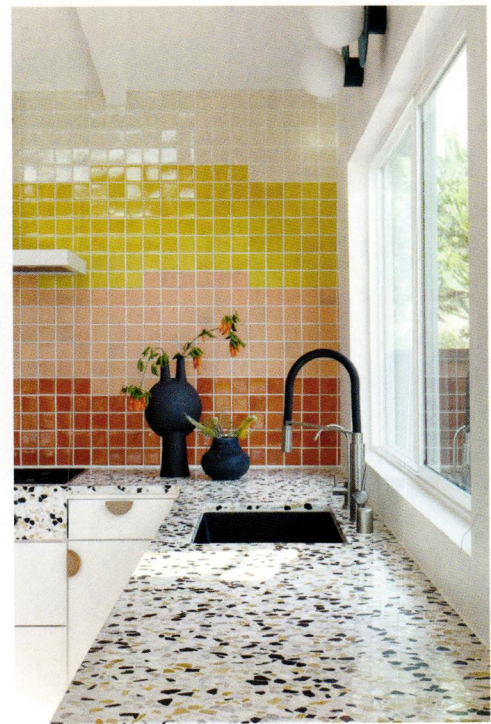


TO MAKE UP FOR LOST SUNLIGHT AFTER COVERING A WINDOW ABOVE THE RANGE, GABRIELLE MADE THE WINDOW OVER THE SINK EXTRA LARGE.

Creating your dream kitchen is a balancing act. Juggling the needs of your family, maximizing space and including your favorite design elements can often seem like an impossible task. But for one lucky couple in the Los Angeles neighborhood of El Sereno, everything fell into place in extraordinary fashion.

"Our clients wanted a fun, functional kitchen that was fresh and bright with thoughtful storage solutions," says Gabrielle Aker of Aker Interiors, who took on the project in 2020. But before the fun began in this 1956 home, the layout of the kitchen would have to be reimaged.

"We had spatial restrictions on either side of the kitchen that could only be resolved by remodeling the whole first floor, so instead we chose to meticulously design it to maximize the space," Gabrielle says. This careful expansion included bumping the left cabinetry wall out by 12 inches to allow more space in the center of the kitchen and removing drywall added by a previous owner to expose the vaulted ceilings.



TOP: "OUR CLIENTS LOVE TO COOK AND HOST, SO THEY KNEW WHICH APPLIANCES THEY WANTED," GABRIELLE SAYS. "MY REQUEST WAS A PANEL-READY REFRIGERATOR/FREEZER AND DISHWASHER SO THERE WASN'T AN ABUNDANCE OF STAINLESS STEEL INTERRUPTING THE VISUAL FLOW. BUT MOST BRANDS OFFER PANEL-READY OPTIONS NOW, SO THAT WASN'T AN ISSUE."

ABOVE: WITH THE SOLID BACKSPLASH AND WHITE CABINETRY, GABRIELLE WANTED THE COUNTERTOPS TO HAVE AN INTERESTING PATTERN OR TEXTURE WITHOUT MAKING THE OVERALL VISUAL CHAOTIC TO THE EYE. TERRAZZO WAS THE PERFECT FIT.

NANAWALL OPENING GLASS WALLS



REIMAGINE

the relationship
between built spaces
and nature.



Clean Aesthetics: The slimmest profiles available and minimal exposed hardware.



Easy Operation: Smoothest and easiest operation of any folding glass wall.



Barefoot Friendly: Sill design offers a smooth indoor-outdoor transition.



Secure & Durable: Tamper-resistant locks enable peace of mind. Air, water, and forced entry tested.

Available in
three different
material choices:



ALUMINUM



WOOD



CLAD

50 standard color
choices are available

NanaWall®

NanaWall.com



GABRIELLE'S RECOMMENDATION FOR SELECTING KITCHEN HARDWARE IS NOT TO BE AFRAID OF TRYING SOMETHING UNIQUE. "THE MAJORITY OF KITCHEN HARDWARE IS PRETTY STANDARD, WHICH DEFINITELY HAS ITS PLACE, BUT SELECTING SOMETHING UNEXPECTED OR BOLD CAN ELEVATE A KITCHEN IN A MAJOR WAY."

Gabrielle also made a bold decision in the MCM world: covering up a window. "The original kitchen was a galley style with a window looking out onto the street where the current range hood is," she says. "We chose to cover the window to maximize functional storage space and create privacy while also increasing the size of the window over the sink so natural light wasn't lost."

THINKING OUTSIDE THE BOX

When it came to the more delicate design elements of this project, the homeowners were very clear that they were willing to take some risks. "They wanted a bright, happy home that felt in line with the mid-century architecture but had surprising and creative twists throughout." These twists can be seen in harmony throughout the kitchen. The colorful, sunset-inspired backsplash blends seamlessly with the bold terrazzo countertops that flow over the range. "The playfulness



WHEN ASKED WHAT INSPIRED THE TERRAZZO WATERFALL COUNTERTOP, GABRIELLE EXPLAINS, "WE WANTED TO SEE MORE OF IT! WITHOUT SEEING THE TERRAZZO BOTH HORIZONTALLY AND VERTICALLY, IT WAS GETTING SWALLOWED UP BY THE OTHER ELEMENTS, SO IT NEEDED TO HAVE ITS MOMENT."

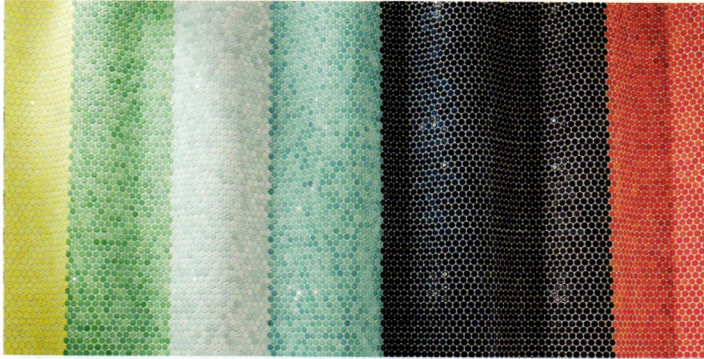
of the terrazzo felt like the perfect balance without being too dramatic or overpowering," Gabrielle says. Appliances are hidden behind white cabinetry that are accented with large, striking pulls. "With the white cabinetry, we wanted the pulls to have interest, either in finish or shape," she says. Thankfully, the design team had a connection at custom furniture maker Aker Studio, who created beautiful pieces of curly white oak to incorporate.

"Take the time to really plan your project out. Kitchens & bathrooms, in particular, are all about functionality and thoughtful storage while maintaining the desired aesthetic," Gabrielle says. "It is going to be more expensive than you think and it's going to take longer than you think, but it will be beyond worth it in the end, and you'll be so glad you did it." ❀

SEE RESOURCES, PAGE 88

modwalls tile

employee owned since 2005



Our PopDotz Porcelain Penny Rounds are made to pop! With a color palette featuring bright colors & updated neutrals, these tiles bring a sense of fun & texture to modern and contemporary homes.

A mod collection designed by artist Rex Ray, our handmade ceramic Rex Rox tiles come in 7 retro inspired colors.



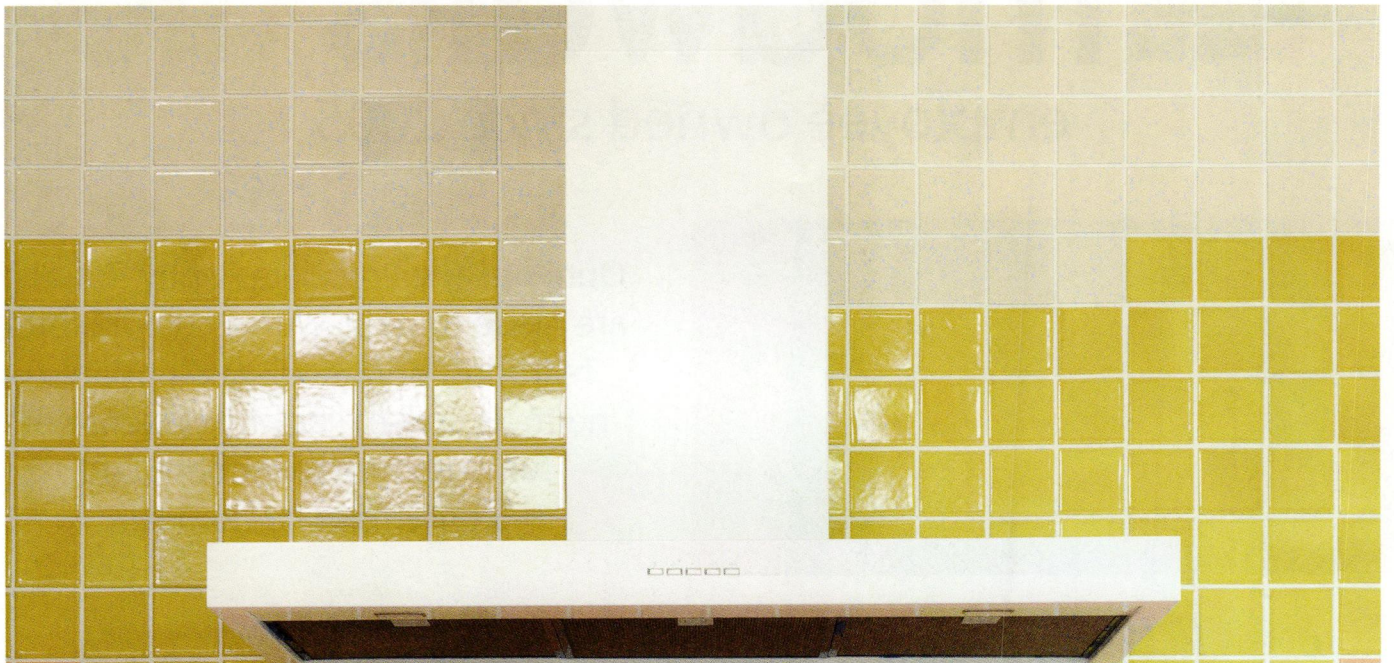
Brio Textured Glass Mosaic tiles are a versatile midcentury classic. Choose one of our signature blends or create your own with a 36-color custom palette.

Fully customizable in 130 vibrant colors & 19 shapes, create your dream room with our Kiln Handmade Ceramics collection.



First \$20 in samples free! Use code ATOMIC

modwalls.com | service@modwalls.com | 877.439.9734



KITCHEN WISDOM

Designer Gabrielle Aker shares her kitchen remodeling tips and tricks.

- Think about the items you have and where they'll go. Measure them so you know how much space you need in any given cabinet or drawer.
- Lay out the room size with painter's tape, either in the actual room or another, and pretend you're moving about the space. You'll realize where you naturally reach for particular items, informing their natural location.
- Don't get trapped by what the layout "should" be. It's your house; it should function for you.
- Hire a designer, but I'm fully aware that's not possible for most people, so find a designer in person or online that you can hire for a consultation. Most people are spatially challenged, but we as designers can envision rooms in our heads, so taking \$300-\$1,000 (estimated, depending on where you live) out of your construction budget to have someone give you their expertise is going to save you money in the long run.
- When someone reaches out, we ask for their desired aesthetic and images showcasing that, overall planned investment and anticipated start and completion date, as well as a few other details. If potential clients don't have all of the answers, that's ok! Whatever information they have acts as an initial guide for us to determine if our vision and goals are aligned. Above all, we want both clients and designers to find their right match. When alignment happens, it's magic.

GABRIELLE USED DOZENS OF DIFFERENT COLORS AND FINISHES OF FIRECLAY TILE TO CREATE THE OMBRE EFFECT SHE WAS LOOKING FOR IN THIS BACKSPLASH. "I CREATE THE TILE LAYOUT BY HAND ON MOST PROJECTS AND AM ON-SITE ON THE FIRST DAY OF INSTALLATION TO MEET WITH THE INSTALLER AND TWEAK THE LAYOUT IN REAL TIME."

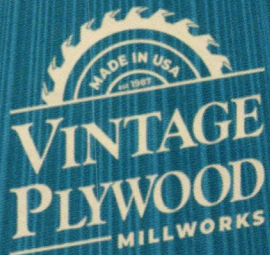


Weldtex

COMBED TILES & PANELS

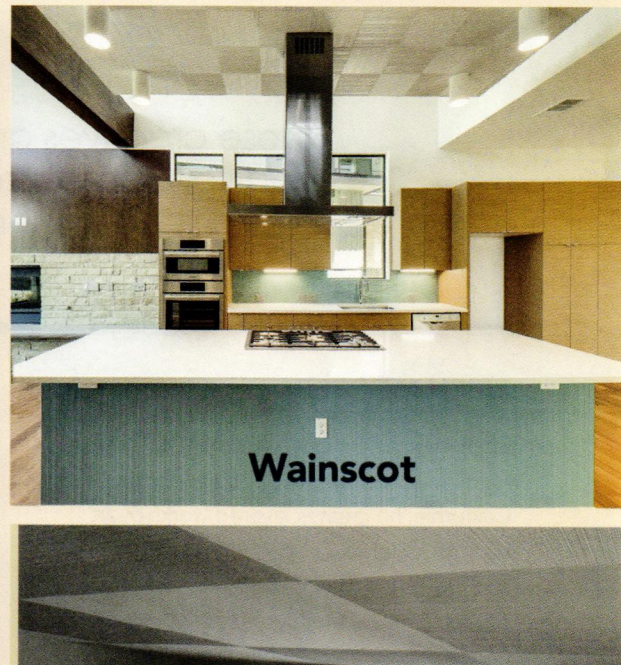
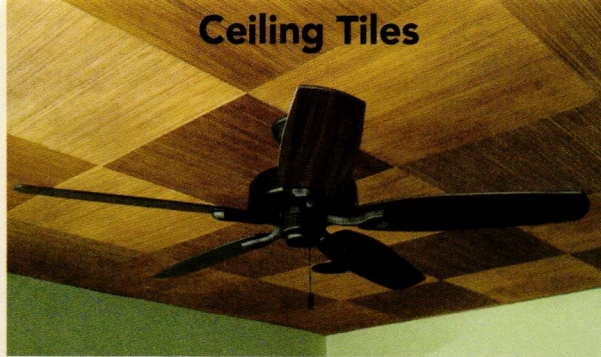
WELDTEX IS BACK FROM THE MIDCENTURY!

Vintage Plywood provides Weldtex tiles & panels that are perfect for the mid-century flair you've been wanting for your home. Visit our website for more information about our products.



(415)883-5300

VintagePlywood.com



THE STARBURST



Be informed, be inspired, be the first to know what's going on in the world of MCM!

Are you getting **The Starburst**?
Your weekly guide to all things Mid Mod!

Sign up for the newsletter at
atomic-ranch.com.

Modern Artists

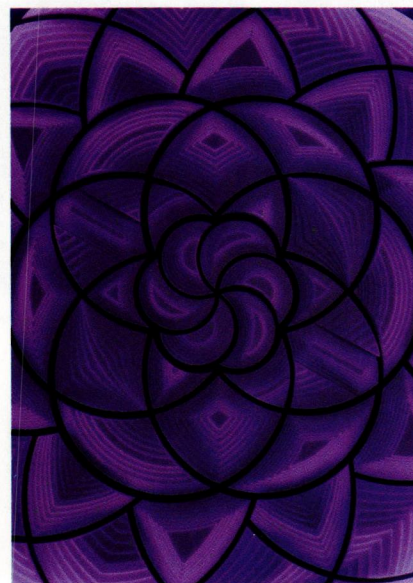
These creatives are keeping MCM traditions alive, creating works inspired by— and perfect for—mid mod interiors. By Ian McMaster

ERICH MEAGER

Erich Meager is the world's first and only ratiolaminartist. Based in Palm Springs, California, he creates layered works of art from precision-cut paper, wood, acrylic and metal. Inspired by concrete breezeway blocks, patterns in nature and designs from his geometrically-minded mind, Shadowtiles are his layered interpretations of geometric forms. You can see his work at The Kee Gallery, 2600 S. Cherokee Way, Palm Springs, CA 92264.

Website: erichmeager.com

Instagram: [@erichmeager](https://www.instagram.com/erichmeager)

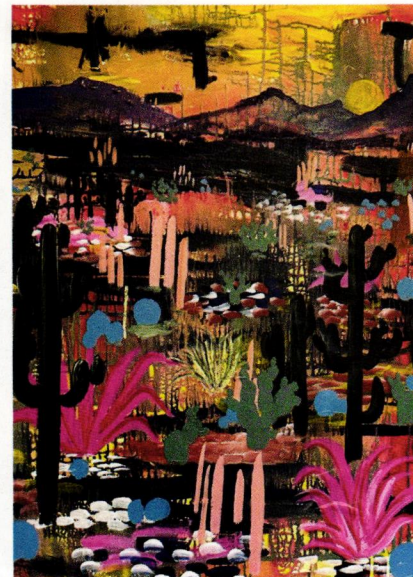


JILLIAN GAMBLE

Jillian Gamble has been an art educator for the past 18 years and, since achieving her master's in art, a dedicated studio artist. Her dream is to spread enthusiasm for the arts to her students and instill a feeling of joy in those who experience her lively paintings. Drawn to scenes of flora from the deserts to the mountains, she distills the essence of place and the emotions it evokes into vibrant compositions through expressive and gestural brushwork.

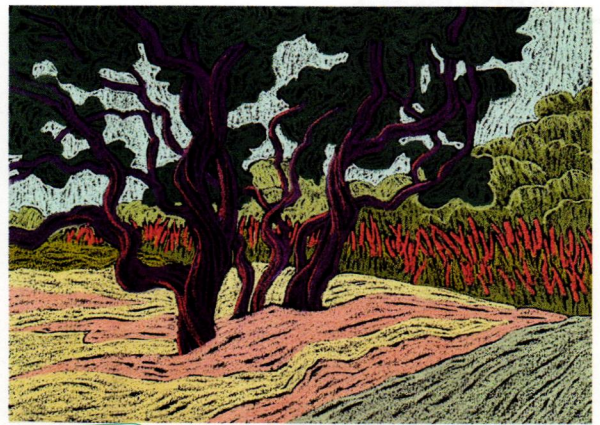
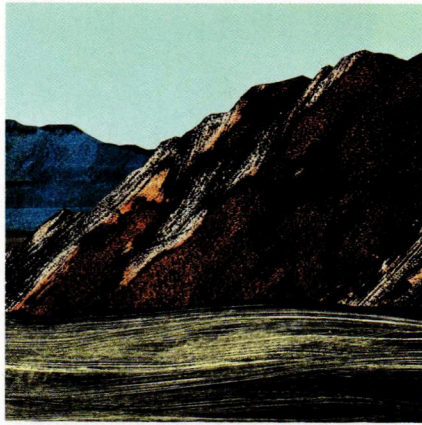
Website: jillianrgamble.com

Instagram: [@jillianrgamble](https://www.instagram.com/jillianrgamble)



WENDY KAHLE

Wendy Kahle looks for ways to express the landscape in familiar yet unexpected ways in her recent works. Her etchings, monoprints, pastel drawings and collages are all inspired by observing and distilling landscape features down to dynamic and sinuous form using color, texture, pattern or value. Living in Palm Springs, California—a region enveloped by visually dramatic geography and unique flora—has brought new imagery into her art.



Website: wendykahle.com
Instagram: [@wendy_kahle_artist](https://www.instagram.com/wendy_kahle_artist)

MICHAEL J. HIRSH

Michael Hirsh is a Southern California ceramic artist whose interest in clay was sparked early in life and nurtured at the California College of the Arts, where he studied with Peter Voulkos and Viola Frey. Influenced by such icons, Michael has created his own body of unique, meticulously crafted work—all formed, carved and glazed by hand. While earlier pieces were inspired by the Arts and Crafts movement, his current ceramics reflect the bold colors and silhouettes of mid-century Modernism.



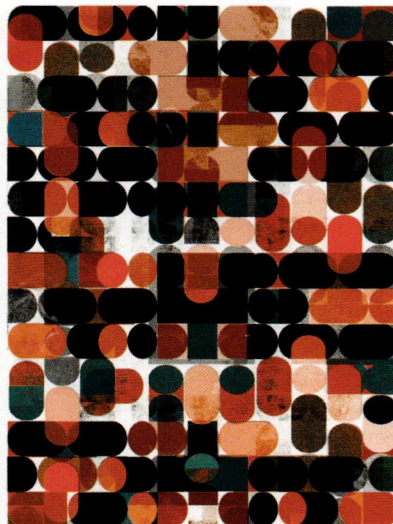
Website: mjhceramics.com
Instagram: [@mjhceramics](https://www.instagram.com/mjhceramics)

MOD CITY GALLERY

Mod City Gallery specializes in exclusive limited edition works by contemporary artist Richard Prescott of Palm Springs, California. Enjoy a diverse range of mid-century-inspired style and techniques with high-quality artworks that are accessible to next-generation as well as seasoned contemporary-art collectors.

Mod City Gallery works with you to create a professional and supportive design experience, specializing in collaborations with art buyers who require very customized, designer-quality artworks.

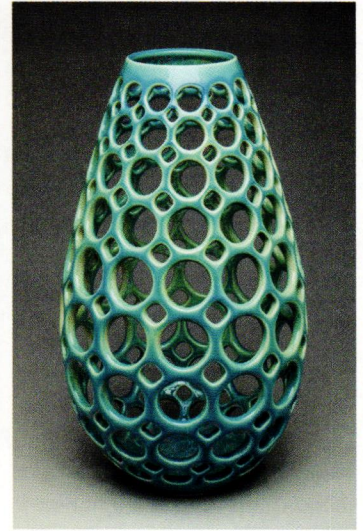
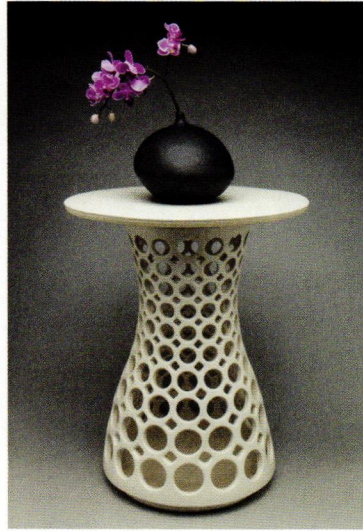
Website: Modcitygallery.com
Instagram: [@mod.city.gallery](https://www.instagram.com/mod.city.gallery)



LYNNE MEADE

Lynne Meade handcrafts bowls, candleholders, furniture, lanterns, lighting and sculpture inspired by Mid Century Modern design. The pieces are wheel-thrown stoneware. The pattern is mapped out and carefully cut out by hand. Small holes are created when the clay is still wet, and then each hole is painstakingly enlarged and smoothed when the clay is bone dry. Lynne's work pushes the boundaries of function vs. art, redefining the role of traditional pottery to use clay in modern interiors.

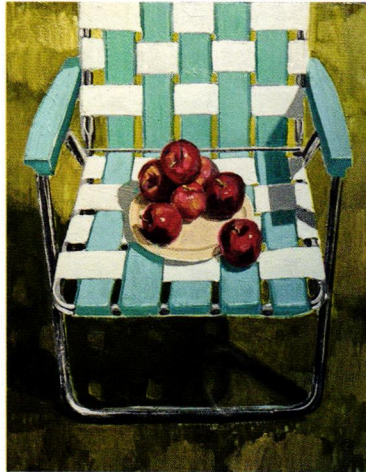
Website: lynnemeade.com
Instagram: [@lynne_meade](https://www.instagram.com/lynne_meade)



MATTHEW PIERCE

Matthew Pierce's love for contemporary realism shows with his expressive and authentic approach to painting. His subject matter focuses on scenes and subjects that are common and sometimes nostalgic. His goal is to honor and bring dignity to that which is so often overlooked. Working predominantly in oil, Matthew sees each painting as an exploration of a subject through composition, color and value.

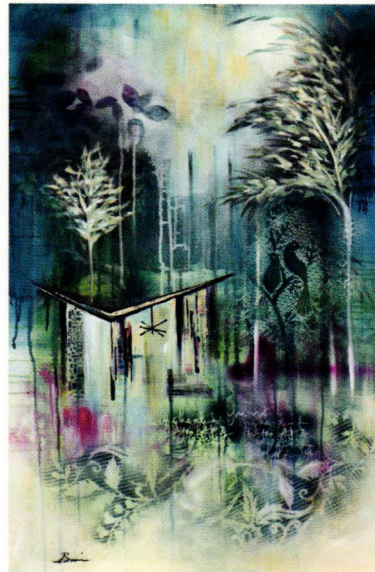
Website: matthewpiercefineart.com



ANGELA BISSON

Angela Bisson creates art that celebrates the mid-century era and is inspired by the optimism and innovation of this effervescent era. By embracing the principles of Mid Century Modern design and infusing them with a contemporary twist, Angela aims to create a bridge between the past and the present. Her goal as an artist is to create art that not only captures the spirit of mid-century but also inspires a sense of optimism and hope today.

Website: [etsy.com/shop/AngelaBissonStudio](https://www.etsy.com/shop/AngelaBissonStudio)
Instagram: [@angelabissonstudio](https://www.instagram.com/angelabissonstudio)



PAUL FUENTES DESIGN

Paul Fuentes is a Mexican fine art photographer known for capturing dreamy places with mid-century nostalgia. His work is a blend of surrealism and pop art that will bring a smile to your face.

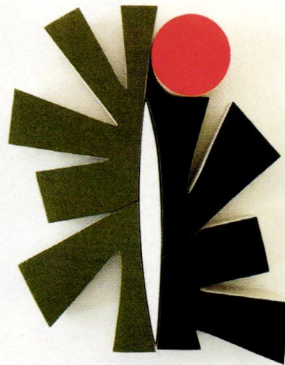
Paul loves to travel and a trip to Palm Springs, California, in 2018 inspired him to focus particularly on capturing the endless summer of mid-century America. You'll find classic cars, iconic architecture and wild animals chilling by the pool. Big cats have become his signature.



Website: paulfuentesdesign.com
Instagram: [@paulfuentes_design](https://www.instagram.com/paulfuentes_design)

SCOTT TROXEL

Scott Troxel draws on the aesthetics of bygone technology and the forward-looking designs of the Atomic Age and mid-century Modernism to make dynamic, retro-futurist wooden sculptures that evoke nostalgia for the past as much as they look to the future. His background in commercial products, graphics, design and aesthetics mirror similar artists like Andy Warhol who honed their artistic skills through real-world applications prior to the shift into fine arts. He currently works in his studio and wood shop by the ocean in southern coastal New Jersey.

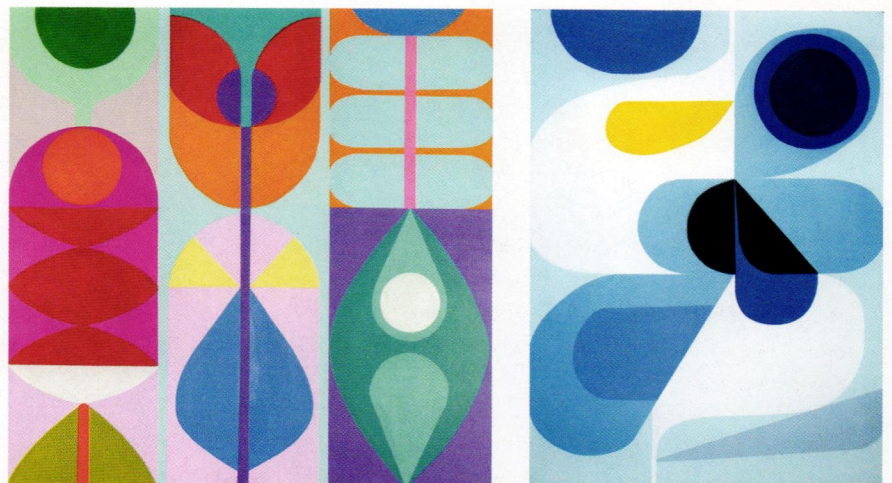


Website: scotttroxelart.com
Instagram: [@scotttroxel.art](https://www.instagram.com/scotttroxel.art)

MARION GRIESE

Marion Griese is a Canadian abstract artist from the Niagara region of Ontario. Her work features bold colours and simple forms inspired by nature and the organic shapes and patterns found in MCM design. These elements have become the vocabulary to give shape to her impressions of the world around her. "My hope is that my art becomes a space to transcend the moment and a means to experience a sense of joy and optimism," she says.

Website: mariongriese.com
Instagram: [@mariongriese](https://www.instagram.com/mariongriese)



California's Graceland

Inside the Man in Black's Ojai home.

By **Morgan Martinez**

Photography by **Bret Gum** | Styled by **Jickie Torres**

A VINTAGE ANTLER CHANDELIER CROWNS A PORTRAIT OF THE MAN IN BLACK. LISA NOTES THAT SHE AND ALICIA ENJOYED FINDING ARTISTS ON ETSY WHO WERE CREATING ORIGINAL JOHNNY CASH ARTWORK. THE FANS ARE AS MUCH A PART OF THE HOME AS THE FAMILY.



As his fame was reaching an all-time high, Johnny Cash designed this ranch-style home tucked away in the hills of Ojai, California. In 1961, Johnny and his then-wife, Vivian, sought to provide some peace and privacy for their four daughters with this oasis. Ironically, in the coming years, Johnny would spend very little time in the home that he had designed room by room. Nevertheless, the home remains imbued with his style and character.





THE HOUSE'S LAYOUT WAS DESIGNED WITH THE SCENERY IN MIND. JOHNNY AND VIVIAN ADMIRERED THE NATURE IN THE OJAI VALLEY AND WANTED THEIR HOME TO BRING THAT BEAUTY AS CLOSE TO INDOORS AS POSSIBLE. CINDY CASH NOTES, "EVERYONE SHOULD GO AND VISIT. EVEN IF JUST FOR THE SUNSETS."

Walking through the rustic wooden front door, you are greeted with a silver glitter ceiling. Pictures of Johnny and his family fill the entryway that was once the home of a large fish tank. Western mid-century motifs adorn each room as you feel the unmistakable presence of *The Man in Black*.

Lisa Kenton and her husband, Jerry, purchased the home in a whirlwind buying process in 2001. "I had no initial intention of purchasing it," Lisa recounts. "I feel a unique connection, as if the house somehow chose us." But the house didn't stop there. Of the renovation process, Lisa says, "I respect whatever direction the house wants to take. It's gradually revealing its magic, its love, its original intention."

FINDING A POT OF GOLD

Lisa wanted to preserve as much of the original features of the ranch-style home as she could. She hired Alicia Beaty of Style Choice Interiors in Ojai to help her navigate

updating for function, restoring lost features and saving the rest. Lisa also wanted the interior designs to truly pay homage to Cash's style and lore.

Together, Lisa and Alicia began to uncover the hidden gems of this Mid Century Modern home. A literal example? When they decided to pull up a tile in the back game room to see what was underneath, they could hardly believe their eyes when they revealed a glittery golden floor!

Inspired, the two decided to embrace the glitter adding a sparkly gold classic style bar booth table in the corner along with a long, reclaimed wood bartop, a pool table with natural wood and black Western accents, and plenty of musical instruments for the enjoyment of guests.

STAR STYLE

Glitter found its way into most rooms of the house. Every bedroom had a sparkling acoustical ceiling. Johnny wanted his girls to see the stars even inside—he wanted the house to feel like it had no ceilings at all!

Tidbits like this about Johnny's original design come courtesy of Johnny's daughter, Cindy. Twenty years before buying the house, the couple had met the second-youngest of Cash's four daughters, Cindy Cash, at the biker bar they owned in Ojai. They'd become friends over the years and, in fact, when Lisa called Cindy to tell her they had bought the house, Cindy was overjoyed and relieved to hear that her childhood home would be taken care of by her good friends.

RIGHT: THE BRICK FLOORING AND WHITE COLUMNS BRING A MID-CENTURY FLAVOR INTO THE ENTRYWAY. LISA REMAINS DETERMINED TO ACQUIRE THE ORIGINAL DOOR THAT CASH HAD INSTALLED WITH THE HOME, BUT THIS ORNATE, NATURAL WOOD DOES JUST FINE FOR NOW. BELOW: WHILE THE POOL HAD BEEN INSTALLED BY THE PREVIOUS OWNERS, THE KENTONS ADDED THE GUITAR MOSAIC TO THE BOTTOM, BRINGING JOHNNY INTO THE DESIGN. BIG J, WHO OVERSAW THE LANDSCAPING AND OUTDOOR RENOVATIONS, BUILT THIS GUITAR MOSAIC BY HAND.



ALICIA CHOSE A VINTAGE ADRIAN PEARSALL SOFA FOR THE LIVING ROOM WHICH PAIRS FABULOUSLY WITH THE COWHIDE, WOOD-FRAME CHAIRS THAT ENCOMPASS THE WESTERN MID-CENTURY LOOK THE KENTONS ASSOCIATE WITH JOHNNY. THE EARTHY GREEN PALETTE COMPLEMENTS THE VIEW OF THE CASITAS SPRINGS VALLEY OUTSIDE THE BAY WINDOWS THAT LINE THE OTHER SIDE OF THE ROOM.

"I respect whatever direction the house wants to take. It's gradually revealing its **magic**, its **love**, its **original intention**."





JOHNNY'S DESIGN

Throughout the renovation process, Lisa and Alicia followed one fundamental rule: only remove what is absolutely necessary. In their words, "Each change would mean removing a piece of Johnny." Where original features were lost, they tapped into Johnny's signature style as their muse. Save for the original knotty pine cabinets and hardware, the kitchen had been redone by the previous owners in the 1980s. The first update they tackled was the flooring. Lisa and Alicia opted for black stone—a color they felt appropriate and a material the Kentons were accustomed to themselves; in fact, Jerry installed it himself.







All the original mid-century features of the house were refurbished, not renovated. This includes original lighting fixtures, hardware and vanity counters in the home's his-and-hers dressing areas. The dressing space also features an original angular built-in vanity table. The original flooring and wood-paneled walls in Johnny's back studio room as well as the original turned-wood railings on the home's half walls in the living and bedrooms were all kept. And yes, even the sparkling acoustical ceilings were repainted their original colors and sprayed with glitter using a process Alicia's team had to customize in order to replicate.

Aspects that had already been modernized by the previous owner were replaced with features that Johnny would have wanted back in 1961—many approved on his behalf by Cindy Cash. This included custom black and silver wallpaper in the guest bath that Alicia had made featuring LPs of Johnny's records as well as black-oak wood floors in the living room.

Alicia notes that renovations may not yet be complete. "We also intend to remove the non-original 1980s blue tile from the kitchen counters and backsplash. Our plan is to install honed black-granite countertops paired with handcrafted Mercury mosaic tile for the backsplash." Determined to create a home that honors Cash's memory—and keeping their promise to never remove a piece of Johnny—Lisa and Alicia are sure to continue bringing magic into this already magical home.

THE CASH RANCH **HISTORY**

1961: Johnny and Vivian moved into the Ojai oasis they had designed, along with their now four daughters.

1963: The hit song "Ring of Fire" was released on the album Ring of Fire: The Best of Johnny Cash.

1964: Johnny's album Bitter Tears, an album highlighting the mistreatment of Native Americans, was released.

1966: After years of neglect and infidelity, Vivian divorced Johnny and he moved out of the house.

1966-EARLY 1970s: Vivian continued to live in the home and raise their four daughters. Cindy remembers, "the house was more Mom's than Dad's."





OPPOSITE AND ABOVE: ALICIA DID A BLEND OF WESTERN AND MOD IN THIS GUEST ROOM WITH NATIVE TEXTILES MIXED WITH SCANDINAVIAN FURNITURE. TOP RIGHT: LISA AND ALICIA HAD FUN WITH THIS GUEST BATH BY INCORPORATING WALLPAPER CUSTOM MADE WITH JOHNNY'S RECORDS. RIGHT: IN THE JOHNNY SUITE BATH, ALICIA CHOSE PERIOD-APPROPRIATE TILE IN GRAY TONES TO COMPLEMENT THE ORIGINAL VANITY CABINET AND ORIGINAL HARDWARE.

COMING FULL CIRCLE

As Lisa notes, much of the house's design credit is owed to Vivian. "The bones of the house are incredible. It has a notable flow and a 360-degree view through strategically placed windows that take full advantage of the breathtaking setting, blurring the lines between indoors and outdoors." Together at the early ages of 29 and 27, Johnny and Vivian designed an outstanding home for their family—a place that Cindy remembers as overflowing with love.

The Kentons rolled out the red carpet for Cindy, inviting her to visit the home she hadn't stepped foot in for 45 years. "When I walked through the door, I just wept," Cindy says. "I felt embraced by the house."



A self-proclaimed "daddy's girl," Cindy recounts endless happy memories of her father at home. "I really was a happy child," she says. "I remember sitting on the ground singing to myself, watching my dad plant these two-foot cypress trees in front of the house." Those trees still stand there today. They are one of many "pieces of Johnny" that remain a part of the home.

Cindy remembers plenty of differences between the house then versus now: a fig tree stood where the pool is now, the game room used to only house a pool table and Jethro the talkative parrot, and what is now a poolside bar was the girls' playhouse. Even still, she applauds the Kentons for what they have accomplished. "Everyone should go and see it," Cindy says. "Lisa and Jerry have really made it just a happy, positive place to be. You can feel it as soon as you step foot in the house."

And this home has more love to give. Lisa and Jerry intend to share the charm of the Cash estate with as many people as possible. "Some have even likened it to the 'Graceland of California,' and while I chuckle at the comparison, I can see why: It's a chance for people to stay in a place that's not just visited, but lived in—even if just for a short while." ❀

SEE RESOURCES, PAGE 88



OPPOSITE, TOP: THIS ROOM IS HAS ITS OWN ENTRANCE ON THE SIDE OF THE HOUSE AND WAS ONCE THE MAID'S QUARTERS. ALICIA EMBRACED AN ATOMIC COLOR PALETTE OF BRIGHT ORANGE COMPLEMENTED BY THE BRUTALIST STYLE LANE BEDROOM SET. OPPOSITE, LEFT: THE JOHNNY AND VIVIAN SUITES HAVE THE SAME FLOOR PLAN AND LAYOUT WITH A CLOSET AND VANITY COMPRISING A DRESSING AREA JUST BEFORE THE ENSUITE BATHROOMS. OPPOSITE, FAR RIGHT: THE VANITY COUNTER IS ORIGINAL AND SPORTS THE ORIGINAL COUNTERTOPS, BUILT-IN ANGULAR DRAWERS, HARDWARE AND LIGHTING. THE TWO ROLLING BLACK AND CHROME CHAIRS WERE FOUND IN THE HOUSE AND ARE BELIEVED TO BE ORIGINAL TOO.



WANT TO EXPERIENCE JOHNNY CASH RANCH IN PERSON?
VISIT [ENCHANTEDVACATIONRENTALS.COM/PROPERTY/JOHNNYCASHRANCH/](https://www.enchantedvacationrentals.com/property/johnnycashranch/) FOR MORE INFORMATION.




ABOVE: THE "VIVIAN SUITE" CONTRASTS THE DARK PRIMARY BEDROOM WITH VARIOUS SOFT PINKS AND GOLD DETAILS. THE ROOM OPENS UP DIRECTLY ONTO THE SCENIC BACKYARD AND POOL. ALICIA PARTICULARLY ADMIRERD, "THE RESTORATION OF THE PINK GLITTER CEILING, THE ADDITION OF A LUXURIOUS PINK BED, A BEAUTIFUL PINK MID-CENTURY CHAISE, AND HAND-PAINTED SIDE TABLES."

BELOW, RIGHT: THE ENSUITE BATHROOM OF THE VIVIAN SUITE BOASTS THE SAME PINK COLOR SCHEME WITH GOLD ACCENTS. LISA AND ALICIA ESPECIALLY LIKED THE TRADITIONAL FEMININITY THAT THIS ROOM REPRESENTED IN CONTRAST TO THE DARK BLACK AND RED "JOHNNY" COUNTERPART.









A live-in renovation of this early Mid Century Modern home resulted in the perfect blend of period charm and functional updates for a young family.

Pacific Northwest Treasure

By **Laura Shimko**

Photography by **Matthew Gallant**

Design by **Sally Julien and Halie Venema**

THE HOUSE'S BEAMS WERE ALREADY PAINTED, LIKELY ORIGINAL TO THE HOME, SALLY AND HALIE BELIEVE. THEY OPTED TO REPAINT THEM INSTEAD OF SANDBLASTING DUE TO THE FAMILY LIVING AMID THE RENOVATION AS WELL AS CONCERN OVER WHAT MAY BE UNDER THE PAINT. "WE WORKED TO UNIFY THE COLOR FROM INSIDE TO OUTSIDE, ENSURING THAT THE COLOR OF THE BEAMS WORKED WITH BOTH THE INDOOR AND OUTDOOR DESIGN," SALLY SAYS. A SONNEMAN LOLLIPOP LAMP STANDS TO THE LEFT OF THE COUCH. SALLY AND HALIE HAD THE BROWN SALTMAN TEAK AND LEATHER CHAIRS REUPHOLSTERED IN BLACK TO REFLECT THE PALETTE.

FUNCTIONAL UPDATES IN THE KITCHEN INCLUDED ADDITIONAL CASUAL SEATING, ESPECIALLY FOR THE HOMEOWNERS' YOUNGEST CHILD. OTHER CONSIDERATIONS INVOLVED MAXIMIZING THE STORAGE CAPACITY IN THE SPACE, AS THE ORIGINAL CABINETRY DID NOT ALLOW FOR MUCH. "USING THE SAME AMOUNT OF SPACE, WE WERE ABLE TO ADD A LOT OF FUNCTIONAL STORAGE BY ADDING DRAWERS FOR ALL THE LOWER CABINETS, ENSURING THAT ALL THE CORNERS COULD BE WELL-USED," SALLY SAYS. THE LIGHTING IS A MIX OF OLD AND NEW. "THE SCONCE OVER THE KITCHEN SINK IS AN ORIGINAL LIGHTING FIXTURE; WE REPLACED THE MATCHING ONES WITH THE WHITE BALLS, MUCH LIKE THE MUSIC ROOM," SALLY SAYS.

When it comes to renovating a Mid Century Modern home, care must be taken in deciding what to update and what to restore. Design duo Sally Julien and Halie Venema of the interior design firm Modernous specialize in all things modern, working together to bring a harmony of style and function in every project.

"I fell in love with mid-century design back in the early '90s," Sally says. "I spent the past 30 years learning about and loving the designs of the era. I find that the simplicity and clean lines make me feel calm in my own spaces and I like to bring that feeling to my clients."

When the owners of this Edmonds, Washington, home, built in 1959, approached Sally and Halie, they wanted to find a way to create a functional design for their young, blended family without sacrificing the original elements that made their home special. They wanted to preserve the character and original features and needed some guidance on what should stay, what could go and how to get the comfort of today's technology into the home without losing any of its period charm, Sally says. "This project was a renovation, but the goal was to feel more like a restoration."

LIVING + DESIGNING

Because the family had to live in the house during the project, Sally and Halie had to be very careful and strategic when it came to orchestrating the renovation so as not to cause too much disruption to their lives. "We also had to be responsive to changing priorities as they came up—which happened a couple of times—since their family needed to be comfortable living there and sometimes what they thought would be most important was superseded by other things in reality."







ABOVE: WHILE THE CABINETRY IS ALL NEW, THESE ORANGE SLIDING UPPERS ARE A NOD TO MCM DESIGN. "THESE WERE THE PERFECT SCALE FOR THE SPACE, AS THEY ARE ON THE BACK OF THE LIVING ROOM FEATURE WALL, WHICH HAS A GAP AT THE TOP," SALLY SAYS. "THEY PROVIDE SOME EXTRA STORAGE WHILE ALSO GIVING A BEAUTIFUL POP OF ORANGE."

OPPOSITE: IN THE DINING ROOM, SALLY AND HALIE MADE MINIMAL CHANGES; THEY KEPT THE ORIGINAL FLOORING AND PAINTED THE BEAMS TO MATCH THE REST OF THE HOME. "WE CHANGED THE LIGHTING FIXTURE IN THIS ROOM BECAUSE WHAT WAS THERE COULD ONLY BE CLASSIFIED AS MID-CENTURY GRANDMA," SALLY SAYS. THE FURNITURE IN THE ROOM IS A MIX OF OLD AND NEW, WITH THE VINTAGE TEAK BUFFET FROM THE OWNERS' COLLECTION AND A VINTAGE TABLE BASE THEY HAD POWDER-COATED AND COMMISSIONED A NEW TABLETOP. "THE DINING CHAIRS ARE MODERNIZE REPRODUCTIONS THAT WILL TOLERATE A GROWING TODDLER," SALLY SAYS.

Inside the home, the designers started by changing out the old linoleum flooring in the music room and kitchen. "We recommended a terrazzo tile floor that would give a nod to the period of the house, brightening and lightening the rooms overall," Sally explains. They also sourced both new and vintage furniture for the living room and music room to foster the MCM vibe the homeowners were hoping to achieve.

Next, they moved to the master bedroom, then the basement and ended with the small galley kitchen. The latter received a complete renovation, including the addition of a new window to bring in more natural light. "The client really trusted us on this and the final product is almost exactly what we pitched to them," Sally says. "I love that they weren't afraid of the custom orange sliding cabinets that we had built for them and they went for the round vent hood."

BALANCING ACT

The choices that need to be made to either renovate or restore existing elements are often the hardest aspects of redesigning mid-century homes. Thankfully, the homeowners collaborated with Sally and Halie in making it a priority to preserve key features of the original design and architecture. This is clearly seen in the living room and kitchen, where the original paneled dividing wall was retained. "It is such a 'trend' to have an open plan and many homeowners would have wanted to tear that down," Sally says. "We thought it would be a shame—and fortunately, so did they!"



RESTORE **OR REDO?**

Planning your next mid mod renovation? Whether big or small, any project has its own set of challenges and it is hard to know what should stay original and what should be updated. Before you get started, consider these top three tips from interior designer Sally Julien of Modernous.

- 1. FIND AN EXPERT.** While it may be tempting to DIY your renovation project, getting a professional to help guide you will be a big benefit. "Even if your budget is tight, having someone come in for even a one-hour consultation can save you thousands in missed steps," Sally advises.
- 2. PRESERVING CONNECTION.** Ensure the indoor/outdoor connection, a hallmark of MCM design, is maintained, Sally says, adding, "Whether it is a beam or eaves or even a wall, preserving those elements to look like one plane (same color, material, texture, etc.) will go a long way toward preserving the architectural intent."
- 3. FEATURE FOCUS.** Keep in mind the specific architectural and design features that are unique and give your home its character in your decision making. This will help you pick out what to save and what to update as you move forward. "Be sure you are highlighting and not distracting from them," Sally says.

While they kept the wall and did not design an open concept for these two living spaces, Sally and Halie used certain elements to ensure the design felt light and bright. "By adding a window and opting for white paint, floors and countertops, the kitchen reflects a lot more light than it did, while not looking like a trendy, all-white kitchen," Sally says.

PERFECTING THE PALETTE

One of the most recognizable aspects of Mid Century Modern design is the unique color palette. However, for those wanting to blend in a more updated iteration of this style, the challenge is to balance the bright and bold colors of the era with a more modern palette. Often a home's palette is inspired by a key piece or feature and expanded outwards. In this case, it began with the exterior of the home. "Because the house is a specific type of Pacific Northwest brick, we were limited in what would work with the exterior and make it look intentional and modern," Sally says. "That drove the color of the beams inside, as those penetrate the envelope and flow throughout."

Orange is one color that threads throughout the home, inspired by the husband's desire to have an orange front door. When the wife expressed that she did not want to have too much orange in the home, they used other, more subtle, accent colors throughout the home. "They all flow together without clashing and we worked to include each tone in other places to create continuity: the gold in the living room, the green and blue in the bedroom, orange and other colors in the music room," Sally says. 🌿

SEE RESOURCES, PAGE 88

THE KITCHEN WAS COMPLETELY RENOVATED FROM THE GROUND UP, THOUGH THE ORIGINAL BEAMS WERE LEFT IN PLACE BUT PAINTED TO MATCH THE REST OF THE HOME. "WE ADDED A NEW WINDOW FOR EXTRA LIGHT AND TO CREATE A VIEW FOR THE COUNTER-HEIGHT BAR AREA WE ADDED," SALLY SAYS.



FOR MORE IDEAS FOR
MID CENTURY MODERN
GALLEY KITCHENS, VISIT
ATOMIC-RANCH.COM.

“This project was a renovation, but the goal was to feel more like a restoration.”





ABOVE: IN THE MUSIC ROOM, SALLY AND HALIE FACED A CHALLENGE WITH THE ORIGINAL LIGHTING. "THE LIGHT FIXTURES WERE ORIGINAL AND VERY COOL LOOKING, BUT THEY DID NOT PUT OFF NEARLY ENOUGH LIGHT," SALLY SAYS. "WE HAD THE ELECTRICIAN REPLACE THE FIXTURES WITH BALL LIGHTS THAT WOULD GIVE OFF MORE LIGHT OVERALL, AND THEN PUT THE ORIGINAL, REWIRED FIXTURES ABOVE THE VINTAGE GEORGE NELSON OMNI WALL UNIT WE SOURCED FOR THEM." IN THE CORNER, THE SONNEMAN ORBITER EYEBALL LAMP IS ALSO VINTAGE.

RIGHT: IN THE MASTER BEDROOM, THE HARDWOOD FLOORS, ALSO THROUGHOUT THE REST OF THE UPSTAIRS, ARE ALL ORIGINAL. "THE CLIENT FELL IN LOVE WITH THE A-FRAME WALNUT NIGHTSTANDS BY KIP STEWART AND STEWART MACDOUGALL FOR THE DREXEL DECLARATION COLLECTION AND WE REALLY DESIGNED THE ROOM AROUND THEM," SALLY SAYS. THE WALLPAPER IS FROM WALLPAPER FROM THE 70S (WALLPAPERFROMTHE70S.COM), WHILE THE WALNUT SLAT BENCH IS VINTAGE.

OPPOSITE: THIS GEORGE NELSON OMNI WALL UNIT WAS OUT OF BUDGET FOR THE HOMEOWNERS, BUT SALLY AND HALIE WENT ABOVE AND BEYOND TO MAKE SURE THEY WERE ABLE TO HAVE THIS SPECIAL PIECE. "MODERNOUS WENT THROUGH A FEW OF OUR VINTAGE RESOURCES AND PIECED TOGETHER THIS UNIT BY SOURCING PARTS FROM SEVERAL PLACES TO CREATE THE UNIT THEY WANTED THAT FIT THEIR SPACE AND BUDGET," SALLY SAYS. THE DEEP SHELVES ARE PERFECT FOR THE HUSBAND'S RECORD PLAYER AND ALBUMS.



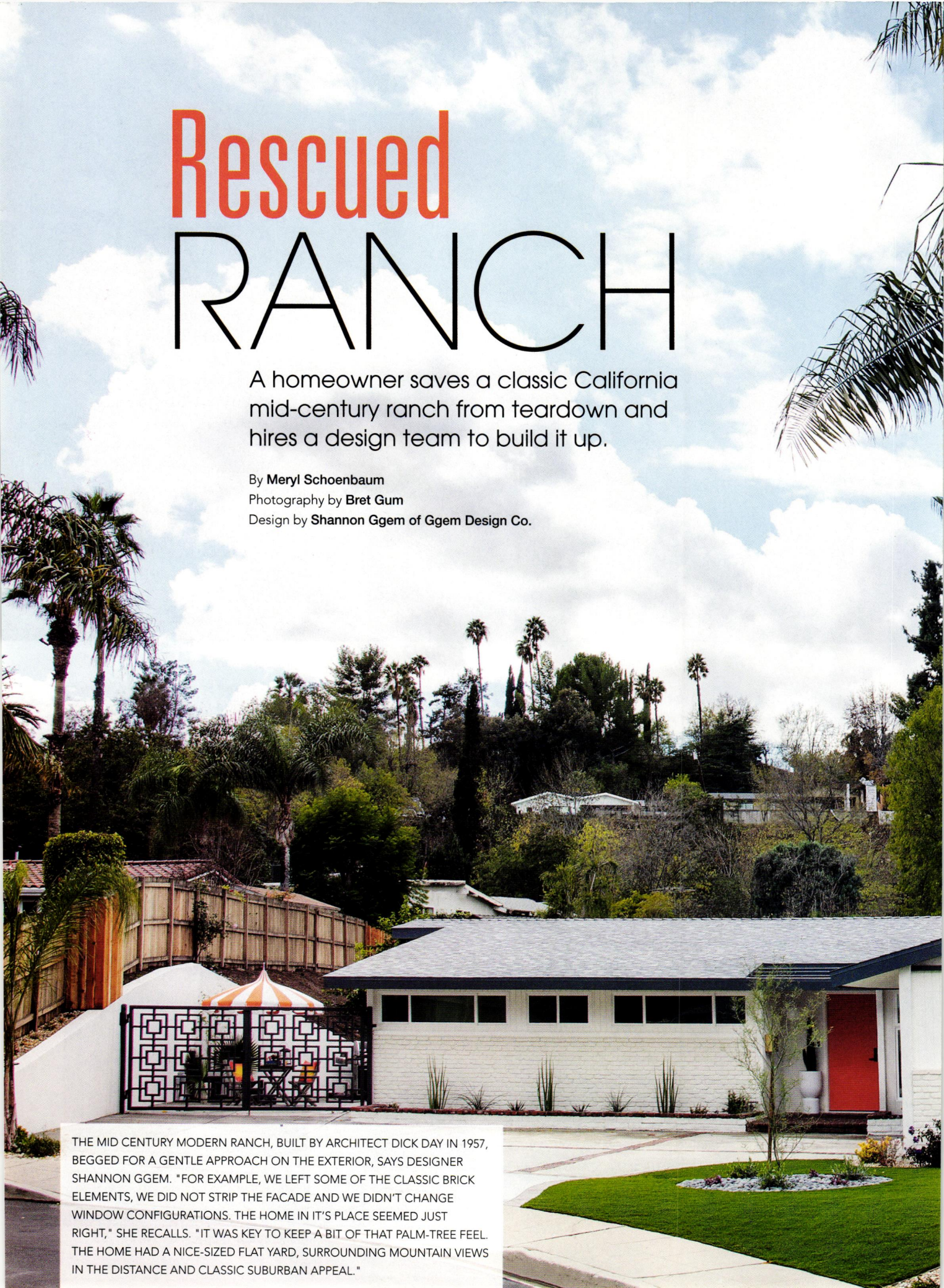
Rescued RANCH

A homeowner saves a classic California mid-century ranch from teardown and hires a design team to build it up.

By Meryl Schoenbaum

Photography by Bret Gum

Design by Shannon Ggem of Ggem Design Co.



THE MID CENTURY MODERN RANCH, BUILT BY ARCHITECT DICK DAY IN 1957, BEGGED FOR A GENTLE APPROACH ON THE EXTERIOR, SAYS DESIGNER SHANNON GGEM. "FOR EXAMPLE, WE LEFT SOME OF THE CLASSIC BRICK ELEMENTS, WE DID NOT STRIP THE FACADE AND WE DIDN'T CHANGE WINDOW CONFIGURATIONS. THE HOME IN IT'S PLACE SEEMED JUST RIGHT," SHE RECALLS. "IT WAS KEY TO KEEP A BIT OF THAT PALM-TREE FEEL. THE HOME HAD A NICE-SIZED FLAT YARD, SURROUNDING MOUNTAIN VIEWS IN THE DISTANCE AND CLASSIC SUBURBAN APPEAL."



N

ot all heroes wear capes. Some are preservation-minded people who swoop in at the last minute to rescue historical homes that were destined to be demolished. One such hero is Trevor Reynolds of Woodland Hills, California, who saved a Mid Century Modern ranch built in 1957 by architect Dick Day from being torn down by developers.

"There were 12 offers, and my understanding is that all of them were from developers," Trevor says. "I came in at the last minute and offered \$100,000 over with no contingencies. Once we got into the construction of things, it became immediately apparent that it would've been much more cost-effective to simply tear it down and start over." However, Trevor felt a connection to it that overrode his budget. It was costly to renovate and redesign, but it is rich in architectural and design details because of it.

Trevor, a marriage and family therapist who has helped hundreds of teens in his community, has



teens of his own living at home with him. He wanted to create suitable spaces for them and reimagine other areas of the home to fit the family's modern lifestyle. He contacted Shannon Ggem, principal interior designer of Ggem Design Co., whom he had worked with on a previous home project, to take on the task.

Shannon came on board as the renovations were about to begin. "I got to be very involved in the study of the space for this remodel," she says. "We really wanted to give the home back the feeling of a classic ranch with some elements from today, like the kitchen island folded-stone treatment. We

knew we were going to go bold MCM with the lighting. In this home, the exterior openings had been all moved around in past remodels, obscuring the potential of the space. There was a big 1980s brick fireplace in a western-facing room, there were some very unfortunate skylights added that led to the sun beating down into the living room. The dining room was cordoned off and all in all it was a warren of strange sizes and shapes. Once the walls were open, we found that the original Dick Day exterior openings aligned with our conceptual study. We gave ourselves a big pat on the back!"





OPPOSITE AND ABOVE: THE 13-FOOT KITCHEN ISLAND TAKES MID CENTURY MODERN STYLE TO THE NEXT ORGANIC LEVEL "THE THREE-WAY BOOK MATCH OF THE STONE GIVES THE ISLAND THE GRAVITY IT NEEDS," SHANNON SAYS. "THERE IS A POP-OUT DRAWER AND POP-UP PLUG; IT IS HIGHLY FUNCTIONAL. LEATHERED STONE WAS USED IN THE ROOM TO CREATE TEXTURE AND MOVEMENT AND ADDED A NATURAL YET APPROPRIATE STYLE WITH A BIT OF A TIP OF THE HAT TO ITALIAN LEGEND FRATTINI. THE MIXED MATERIALS AND REPRESENTATION OF NATURE WITH SUPER CLEAN LINES REALLY MADE THIS KITCHEN EXTRAORDINARY."



LEFT: A BRIGHT ORANGE DOOR IS THE MID MOD EXCLAMATION POINT IN THE KITCHEN. "WE ACCOMPLISHED A VERY CLEAN AND UNCLUTTERED LOOK WHILE HAVING EVERY MODERN CONVENIENCE, INCLUDING A CONCEALED WET BAR WITH A MID MOD ORANGE LACQUER INSIDE!" SHANNON SAYS.

THE MID-CENTURY WINDOW DESIGN IN THIS SPACE INSPIRED THE DESIGNER'S ROOM CHOICE AND FURNISHINGS. "THE DINING ROOM LENT ITSELF SO NICELY DUE TO THE CLERESTORY WINDOW AND WE WRAPPED THE KITCHEN RIGHT AROUND TO CREATE A WONDERFUL SERVICE BAR," SHANNON SAYS. "THE FAUCET HAS A SELTZER SETTING FOR THE MOST GLAMOROUS BARTENDING!"



OPPOSITE: SHANNON FOUND ANOTHER OPPORTUNITY TO ADD A POP OF MID-CENTURY ORANGE TO THE HOME, HERE IN THE LIVING ROOM. "THE LIVING ROOM IS ALL ABOUT THAT FIREPLACE," SHE SAYS. "WE USED A CUSTOM RAL (COLOR MATCHING SYSTEM) COLOR TO GET THE PERFECT MCM ORANGE AND THE PIECE WAS MADE IN WASHINGTON STATE. WE REUSED THE CLIENTS FURNISHINGS AND RUG FROM THE LAST HOME."

RIGHT: THE ENTRYWAY INCLUDES THIS STYLISH, INVITING SPACE. "THAT NICHE FEATURES SOME ROYAL-BLUE GRASSCLOTH THAT FEELS BOTH MCM AND TODAY ALL AT ONCE!" SHANNON SAYS. "WE USED A FLOATING SHELF TO PROVIDE A USEFUL WELCOMING FEATURE."



FIGURING OUT THE FLOOR PLAN

Shannon discussed some of the renovations and additions that had the most impact on the outcome. "One of my favorite features is the giant primary bathroom, and that was all the client's idea," she says. "We knew we'd be creating a primary suite, but because the Dick Day homes are on post-tension slabs, moving all the plumbing didn't seem feasible. We put a closet and small office on the conceptual study and the client suddenly said he was willing to plumb that area—and boom! The pool was a must for the views from every room in the home and for those mood boards we typed #atomicranch into Instagram, of course! We worked with an architect who was truly collaborative and I so appreciated that spirit."

TEEN SPIRIT

Trevor was deliberate in approaching the design aspects for his teens' rooms, Shannon says. "He directed thoughtful, personal spaces for his kids in their rooms to ensure there was somewhere for them to explore their interests and connect with their friends away from the open floor plan," Shannon says. "The K-pop posters, the Boho feel and a big white fluffy bed are always hits in my book. I also loved accommodating a huge gaming station in the other room."

ICONIC INSPIRATIONS

In creating the classic look and feel of mid-century design throughout the home, Shannon was inspired by



the modern era's master architects. "The iconic cabinets and walnut walls of John Lautner's work came to mind, so the kitchen cabinets were artfully created with that grounded, stately feel," she explains. "Many of the Cliff May Ranchos in Long Beach, California, were in rotation on our mood boards for this. The Cliff Mays were so great to look at because the doors aren't 10 feet and don't die into the roof—they are normal-sized doors. There is an approachable vibe to the Cliff May work that helped so much. We cleaned up the warren of walls in a conceptual drawing based on the Cliff Mays and the architect used that. We were so pleased."

PICKING THE PALETTE

Shannon was fortunate that Trevor was on board with her vision of using bold colors in her room designs. "How great is it to have a client who is brave with color? It's really great," she says. "Having worked with him before, I had an understanding of his palette. It shifted some because of the era of the home, but blue and orange are his taste, so that was very straightforward. The green was brave of him, as I wanted to colordrench that powder room with something. I showed him a chalky peach, a saffron and the green. In the end, he chose the most energetic of the three colors."

This interior-design project was particularly rewarding for Shannon, from her client's decision to preserve the mid-century home to seeing the fruits of her labor in it. "Our client decided to restore this classic mid-century home instead of tearing it down," she says. "It was a more difficult choice, but it preserved history and made for a very interesting project and beautiful outcome." 🌀

SEE RESOURCES, PAGE 88

OPPOSITE: THE PRIMARY BEDROOM IS A MID-CENTURY NIGHT'S DREAM. "THE GRAPHIC WALLPAPER WAS A WONDERFUL ADD AND THE CLIENT HAD SOME GREAT PLANTS THAT FELT SO RIGHT," SHANNON SAYS. "WE WERE ABLE TO PULL OFF A NICE BIG CLOSET AND A VERY LUXE BATH, AND THE SUITE IS ABSOLUTELY PERFECT. WE HAD THE ORANGE BEDDING CUSTOM MADE FOLLOWING MCM DETAILS OF A COVERLET MY GRANDMOTHER HAD IN HER ULTRA-MODERN 1960S HOME."

THIS PAGE: THE PRIMARY BATHROOM IS A LESSON IN FINDING A BALANCE IN SEEMINGLY DIFFERENT STYLES. "THE CLIENT USED TWO TERMS TO EXPRESS WHAT HE WANTED: 'BOLD' AND 'SERENE.' THESE TWO WORDS SEEMED LIKE OPPOSITES AT FIRST, BUT WE ARE SO PROUD OF THE OUTCOME! WITH A LARGE AMOUNT OF OPEN FLOOR, WE KNEW A FUN PATTERN WAS THE WAY TO GO TO ACCOMPLISH 'BOLD,' WE SELECTED A STONE AND WOOD LOOK FOR THOSE TILES. 'SERENE' WE FELT WOULD COME FROM ELEMENTS OF NATURE, AND WOW OFFERED THE PERFECT TILE IN THE POTTERY LINE WITH THE COSMOS PATTERNS: THEY LOOK LIKE WATER."





MAKING A SPLASH IN A SMALL SPACE

Designer Shannon Ggem explains how she achieved maximum impact with minimal space in the powder room.

A CONSUMMATE HOST, Trevor immediately identified the need for a powder room for guests in the home and had the vision to convert the old water-heater closet. We combined the old water-heater location with a coat closet. This mid-century home had the worst layout imaginable. As we sought to clean up the layout, the size of the home now required a powder bath. The old water heater was replaced with a new inline water heater placed elsewhere in the home and was on a post-tension slab, so we took great pains to place new drains for the toilet and the sink additions.

BECAUSE THE EXTERIOR of the home's architecture would be quite disturbed by adding a window, we instead used a beautiful skylight, which provides ample light. It also provides the privacy needed as the exterior wall is the front of the house. We put the sink in the small channel where the water heater was.

FOR A LOOK THAT TIPS THE HAT to Moda, we used a Terrazzo slab and played with circular spaces. We have a fun half-circle towel bar and faucet, the shape repeating in the half-circle mirror and vanity detail. A giant drawer underneath the sink allows for storage. The whole space refers back to its natural surroundings with its serene green color, chipped marble in the Terrazzo and yucca branches atop a gridded Terrazzo tile floor.

THE UNIFICATION of materials and a limited color palette in the room gives it its serenity. Its design, which aligns with the Mid Century Modern theme of the home, makes a powerful impact and generates a delightful ambience.

—Shannon Ggem



OPPOSITE: THE POOL AREA LOOKS LIKE A PAGE OUT OF A MID-CENTURY MAGAZINE. "THE POOL FURNISHINGS AND DÉCOR WERE A LATE ADD, BUT I THINK THEY ARE JUST RIGHT TO KEEP IT FEELING FRESH, PALM TREE-ISH AND VERY SOUTHERN CALIFORNIA BACK THERE!"

THIS PAGE: WHEN SPACE IS LIMITED, STYLISH DETAILS MAKE EVERY SQUARE INCH COUNT. HERE IN THE POWDER ROOM, UNEXPECTED TILES, COLORS AND BUILT-IN FEATURES, LIKE THE PRETTY AND PRACTICAL SHOWER NICHE AT THE RIGHT, TAKE THE SMALL SPACE TO NEW HEIGHTS.



Authentic & *Updated*



A custom 1971 ranch house in Oregon gets a handmade restoration that's a mix between authentic and modern mid-century styles.

By Victoria Van Vlear | Photography by Bret Gum





Most mid-century enthusiasts fall into one of two camps: You're either a purist who loves authenticity in every aspect of architecture, design and furnishings or you prefer a more contemporary twist on the original look. For married couple Scott Cochran and Bethann Prettie, both visions came together for a gorgeous finished aesthetic that combines authentic and updated elements. "She likes Mid Century Modern, but I'm more a traditional purist," Scott says.

ABOVE: SCOTT BUILT THE OUTDOOR KITCHEN HIMSELF TO COMPLEMENT THE NEW POOL AREA. "WE THOUGHT OF WHAT TYPE OF PARTY WE WANTED TO HAVE AND WE DESIGNED IT AROUND THAT," BETHANN SAYS. "WE HAVE KIDS AND ENTERTAIN A LOT. ADULTS CAN BE SITTING BY THE FIREPLACE AND THE KIDS CAN BE IN THE POOL. WE 100% NAILED IT—IT'S THE DREAMIEST BACKYARD."

LEFT: THE FRONT DOORS ARE ORIGINAL TO THE HOME AND GOT AN UPDATE IN THE FORM OF NEW PAINT AND HARDWARE, SETTING THE TONE FOR THE UPDATED ORIGINALITY FOUND INSIDE THE HOME.

RIGHT: SCOTT, BETHANN AND THEIR TWO DAUGHTERS ARE PICTURED IN THEIR 1963 CADILLAC.



BELOW, RIGHT: THE CARPORT WAS BUILT BY SCOTT AND HOUSES HIS VINTAGE CARS, INCLUDING A 1963 CADILLAC, A 1963 F100 UNIBODY TRUCK AND A 1958 CHEVROLET. SCOTT USES INSPIRATION FROM THE 1963 CADILLAC FOR SOME OF HIS HOME DESIGNS. "I LIKE THE PROPORTIONS OF LOW AND WIDE RECTANGLES AND SLIGHT ANGLES ON ENDS," HE SAYS. "WHENEVER I CAN, I IMPLEMENT A KICK OF AN ANGLE, A SLIGHT 10 DEGREES." HE USED THIS ON THE CARPORT FOR MCM VIBES.



BOTTOM: THE OUTDOOR POOL AREA IS A NEW ADDITION TO THE HOUSE. THE PROPERTY IS ON A SLOPE AND THE HOUSE ORIGINALLY OVERLOOKED THE PROPERTY'S FRUIT ORCHARD. "WE LEVELED IT UP SO YOU COULD GET VIEWS FROM THE POOL," BETHANN SAYS. "WE WANTED TO SEE THE WHOLE ASPECT FROM THE POOL." THEY ADDED A POOL HOUSE ON THE FAR SIDE AS WELL. "THERE'S ALSO GOING TO BE A SAUNA IN THERE THAT'S IN PROGRESS," SHE SAYS.





THE DOWNSTAIRS FAMILY ROOM IS PART OF THE WALKOUT BASEMENT THAT WAS ORIGINALLY UNFINISHED. EVEN THOUGH THE HOME HAS A RANCH STYLE, FROM THE BACK, THE TWO-STORY STRUCTURE BECOMES CLEAR. BUT THE ORIGINAL OWNER NEVER FINISHED IT. "THE WHOLE DOWNSTAIRS WAS AN UNFINISHED DAYLIGHT BASEMENT," BETHANN SAYS. THE COUPLE DIVIDED UP THE OPEN SPACE INTO SEVERAL ROOMS, INCLUDING THIS FAMILY ROOM, WHICH RETAINS ITS ORIGINAL FIREPLACE BUT WITH A NEW STONE FINISH. THE SPACE HAS BECOME ONE OF SCOTT'S FAVORITE ROOMS IN THE HOUSE. "WE GET A LOT OF USE OUT OF THAT ROOM," HE SAYS.

The couple is not new to mid-century home design. Bethann is a John L Scott realtor and specializes in mid-century homes in the Portland, Oregon, area, while Scott is a Renaissance man who has skills in everything from sheet-metal working to construction and woodworking. Between the two of them, they've restored three different mid-century homes. This latest, a 1971 custom ranch house in Happy Valley, Oregon, needed a lot of work, so it was the perfect candidate for a handmade restoration.

HOME HISTORY

The origins of the house are a bit murky. "The house wasn't done by a famous architect," Bethann says. "It was finished in '71, but we don't know how long [the original homeowner] was building it. A lot of the brick elements are from the '50s." Scott has access to the original blueprints, which were drawn up by a local architectural firm. "I don't know that there was anything special about it," he says. "It was an early '70s custom-built ranch house." We do know that the original homeowner was a pilot in World War II and Korea, and built the house a year after he retired from military service. Bethann speculates that he might have used inspiration from some of his travels to build his dream home.





LEFT: THE STAIRWELL IS A STATEMENT DESIGN ELEMENT THAT SCOTT MADE HIMSELF. "HE MADE THE METAL FRAME, A SKELETON THAT GOES INTO THE WALL," BETHANN SAYS. "THE WOOD STEPS ARE HOLLOW WOODEN SLEEVES I SLID OVER THE SKELETON," SCOTT ADDS. "IT ONLY HAS A RAILING ON IT BECAUSE WE HAVE KIDS AND I FORCED HIM TO ADD IT," BETHANN SAYS. SCOTT'S VISION WAS NO HANDRAIL, BUT BETH HAD SAFETY CONCERNS REGARDING THE KIDS AND GUESTS.

BELOW: THE ROUND ARCHWAY IN THE BASEMENT IS ONE OF THE STANDOUT FEATURES OF THE HOUSE. THE INSPIRATION CAME FROM AN EPISODE OF AMERICAN WOMAN, WHICH FEATURED A BEVERLY HILLS HOME IN THE 1950S WITH A ROUND ARCHWAY. SCOTT DESIGNED AND MADE IT BY HAND. "EVERYONE COMES OVER AND TAKES PHOTOS IN THAT ENTRYWAY," BETHANN SAYS.

A central part of the original design is the view outside. "The front room goes to a 'V' and frames in two mountains: Mount Hood and Saint Helens," Bethann says. "The whole house is built around those views." The property is on a slope and the house overlooks the fruit orchard that is also original to the house. "Some of the land was sold off, but we bought it as an acre and we still have at least 12 fruit trees," Bethann says.

RESTORATION READY

When the original homeowner died, a neighbor bought the house. "They spray-painted over everything and didn't put a lot of care into it," Bethann says. By the time Scott and Bethann bought the property seven years ago, it needed a lot of work. "It was very much in disrepair," Bethann recalls. "It needed a new roof, new siding. The backyard was so bad with mole tunnels that you couldn't walk without your feet collapsing into mole holes."



THE FRONT ROOM IS THE CENTERPIECE OF THE ORIGINAL ARCHITECTURE, LOOKING OUT OVER THE FRUIT TREES ON THE SLOPE BELOW AND CAPTURING THE VIEWS OF THE LOCAL MOUNTAINS. "THE FRONT ROOM GOES OUT TO A 'V,' IT FRAMES IN MOUNT HOOD AND SAINT HELENS," BETHANN SAYS. "THE FIREPLACE IS ORIGINAL BUT THE COUPLE ADDED A STONE FINISH. "IT WAS PAINTED-OVER BRICK, SO WE REMOVED ALL OF THAT AND PUT IN ROCK," BETHANN SAYS. THE ROOM HAS BECOME HER FAVORITE IN THE HOUSE. "I LOVE SITTING IN THERE WITH THE VIEWS AND WHEN WE HAVE A FIRE GOING IT'S VERY COZY."





The renovation and restoration process took four years, in part because Scott did so much of the work himself. "He did 90% of the work," Bethann says. "We only hired out if we needed an engineer." The renovation included pushing out the exterior walls in the kitchen, knocking down several walls to join small rooms into a larger living space, renovating the bathrooms and finishing the unfinished basement. The couple also put in a pool and built an outdoor kitchen and a new carport.

A few of the standout design elements include the staircase and downstairs circular archway. "The stairwell was bare concrete around the staircase shaft," Scott says. "I built a metal skeleton and anchored it to the concrete foundation." He then added hollow wood sleeves for the treads.

Not far from the staircase is another star element: the round archway leading to the family room in the walkout basement. Scott handmade this archway himself from inspiration in an episode of *American Woman*. "The episode took place in the 1950s and had a house in Beverly Hills with an entryway like that," Bethann says. "I turned to Scott and asked, 'Can you make that?' And he said, 'I think I can.' And he did."

AUTHENTICALLY MODERN

When it came to the home's design vision, Scott and Bethann were united on the idea of mid-century style but divided on a specific concept. "Beth and I over the years have had differences in style and we've slowly started morphing into one," Scott says. "Our last house was '60s



LEFT: THE FRONT ROOM SHOWCASES STUNNING MATERIALS, INCLUDING ROCK AND A SHELLAC WOOD FINISHING. "THERE WAS NO ROCK ORIGINALLY; WE ADDED IT," BETHANN SAYS. THE COUPLE ALSO VAULTED THE CEILINGS TO LEAVE THE BEAMS VISIBLE. THE FLOORING IN THE ENTRYWAY IS SLATE, WHICH SCOTT INSTALLED HIMSELF, INCLUDING THE BUILT-IN PLANTER BOX IN THE FLOOR. ON THE EDGE OF THE CARPET AREA IS A VINTAGE ACROSONIC PIANO FROM THE 1960S. "WE TRIED TO FIND ONE FOR 10 YEARS," BETHANN SAYS. "AND THEN I WAS SHOWING A HOME THAT HAD ONE. I MADE AN OFFER AND THEY TOOK IT."

BELOW: THE ORIGINAL KITCHEN WAS MUCH SMALLER THAN THIS UPDATED VERSION. "WE BUMPED OUT THE HOUSE FIVE FEET; HALF THE KITCHEN WASN'T ORIGINALLY THERE," BETHANN SAYS. THE COUPLE KNOCKED DOWN SEVERAL WALLS TO MAKE THE MAIN LIVING SPACE MORE ROOMY AND SCOTT GOT TO WORK ON THE CABINETS. "HE BUILT THE WALNUT CABINETS IN THE KITCHEN FROM SCRATCH," BETHANN SAYS. "WE COULDN'T FIND ANY WE WANTED AND I FOUND INSPIRATION FROM AN ORIGINAL MID-CENTURY HOUSE IN FLORIDA AND HE BUILT THEM FROM THAT."



"This house
has
a mid- to
late-'60s
inspiration."

— Scott Cochran



“She likes Mid Century Modern, but I’m more of a traditional purist.”

—Scott Cochran

and I really went crazy on that place. I had everything within a three-year [design] window. So when it came to this house, I figured Beth had suffered enough; she didn't like using old appliances and such. So we did modern appliances and the updated modern style she's into."

Even though the structure of this house was finished in 1971, some of the design elements were from the '50s and '60s. "This house has a mid- to late-'60s inspiration," Scott says. Some of the furnishings are new, like the curved sofa in the front room, while others are vintage, like the 1960s piano. For the walls, the couple sought out wood, stone and wallpaper. "Scott was on a mission to have no drywall in the house," Bethann says. "Only the kids' rooms and bathrooms have drywall. Everything else is wallpaper, rock or wood paneling." Other hardscape elements are

authentic to the time period, such as the shellac finish on the vaulted ceiling in the front room, the shag carpeting in the primary bedroom and Corlon vinyl flooring throughout the house.

With Bethann's career as a realtor and Scott's in construction, they make a good team. "With construction stuff, I do the design and I see what's possible," Scott says. "But then Beth has complete control over furniture and furniture placement. We both stay in our lane and sometimes we butt heads a little bit, but I realize what she's good at and she knows what I'm good at." The result is a seamless blend of authentic and modern mid-century style.

"We made it a 1960s dream home for us," Bethann says. 🌿

SEE RESOURCES, PAGE 88



TOTAL *Tiki*

Tour the tiki bar in this 1971 custom ranch with 1960s Hawaiian vibes.

The home of Scott Cochran and Bethann Prettie has a walkout basement that was completely unfinished when they bought the property. "It didn't have flooring or walls—nothing," Bethann says. The couple had to figure out how to divide up the space, and one of the rooms they wanted was a bar. "We've always had a bar in every house we've had," Scott says. "This was toward the ending stages of the remodel and we were tired. I've always liked tiki bars, so I sold that to [Bethann] as a lot cheaper than wood finishes. Tiki bars are basically just yard debris stapled onto the wall."

The couple had just taken their daughter to Hawaii for the first time and she returned wanting a Hawaiian-themed birthday party, so it was the perfect fit. "I wanted to do it traditional," Scott says. He decked out the space from floor to ceiling, including installing a vintage booth that may have come from one of the oldest tiki bars in the country. The Alibi Tiki Bar is in Portland and opened in 1947. "We're not positive it's from there, but that's what the seller said," Bethann says. The multicolored lights in the bar area are custom pieces that Scott made himself from fishing-float glass. "I drilled holes in the glass, fogged it and added the lights," he explains.

Since the couple loves to entertain and the pool is just outside the tiki bar, it has become the perfect place for guests to congregate.

ABOVE, LEFT: THE TIKI BAR IS PART OF THE DOWNSTAIRS BASEMENT, WHICH WAS ORIGINALLY UNFINISHED. "IF YOU GO RIGHT OFF THE STAIRCASE, YOU GET TO THE TIKI BAR," BETHANN SAYS. "THAT WHOLE BASEMENT WAS BLANK," SCOTT ADDS. "0 FINISHES. IT WAS AN EMPTY CANVAS. WE WERE TRYING TO FIGURE OUT WHAT TO GO WITH AND TOWARD THE ENDING STAGES OF THE REMODEL WE WERE TIRED." THEY DECIDED ON A TIKI BAR THAT OPENS UP ONTO THE POOL AREA.

ABOVE, RIGHT: AS PART OF THE CUSTOM TIKI BAR IN THE WALKOUT BASEMENT, THE COUPLE ADDED AN AUTHENTIC VINTAGE BAR BOOTH. THE SELLER CLAIMED IT WAS FROM ALIBI, A NEARBY PORTLAND BAR THAT'S ONE OF THE OLDEST TIKI BARS IN THE COUNTRY, OPEN SINCE 1947.





ABOVE, LEFT: THE PRIMARY BEDROOM HAS A BOLD COLOR PALETTE THAT MATCHES SOME OF THE BRIGHT, RETRO COLORS IN THE REST OF THE HOUSE. "THE COLOR PALETTE IS ORANGES AND TURQUOISES; I'M ALWAYS DRAWN TO THOSE," BETHANN SAYS. OFF THE BASE OF THE BED IS THE ROOM'S CLOSET, TO WHICH THE COUPLE ADDED MIRRORED DOORS THAT CLOSE INTO A MIRRORED WALL. "THE DOORS OPEN INDIVIDUALLY," BETHANN SAYS.



ABOVE, RIGHT: THE PRIMARY BATHROOM WAS ORIGINALLY A SMALLER SPACE. "WE CHANGED THE WHOLE FOOTPRINT," BETHANN SAYS. "IN THAT SPACE WAS A SMALL BATHROOM WITH A SMALL SHOWER AND CLOSET. WE MOVED THE CLOSET AND WE PUT IN A SOAKING TUB." THE FLOATING VANITY IS A CUSTOM PIECE BY SCOTT WITH NEWER MIRRORS TO COMPLEMENT THE WOOD ON THE VANITY.

RIGHT: THE PRIMARY BATHROOM FEATURES SOME OF THE SAME TEXTURED WALLPAPER AS THE BEDROOM. "SCOTT WAS ON A MISSION TO HAVE NO DRYWALL IN THE HOUSE," BETHANN SAYS. ALL THE WALLS IN THE HOUSE ARE EITHER WOOD PANELING, WALLPAPER OR ROCK, ALL OF WHICH ARE PRESENT IN THE PRIMARY BATHROOM. THE ROCK THROUGHOUT THE HOUSE IS FROM A LOCAL QUARRY.

OPPOSITE: THE PRIMARY BEDROOM IS A MIX OF OLD AND NEW, HANDMADE AND BOUGHT. "SCOTT BUILT THE STEP [UP TO THE BED] AND HE BUILT THE FLOATING HEADBOARD," BETHANN SAYS. "THE SHAG CARPET IS NEW, BUT WITH THE OLD STYLE, THEY REPRODUCE IT." SCOTT'S VOTE WAS FOR ORANGE SHAG CARPET, BUT BETHANN OVERRULED HIM. "SHE SHOT ME DOWN ON THAT ONE," SCOTT SAYS. "I ALWAYS WANT TO GO TRADITIONAL PURIST, BUT SHE'S A REALTOR AND KNOWS WHAT MORE PEOPLE WILL LIKE NOW."



Desert Modern

Fit for both calm reflection and vibrant entertaining, this yard combines precise hardscapes with desert-friendly plants to create a stunning exterior.

By **Lindsay Jarvis** | Photography by **Greyslock & Dupont Photography**

CONCRETE PADS FORM A PATH, WHICH HELPS TO VISUALLY DEFINE THE SPACE AND ADD BALANCE TO THE LARGE YARD.



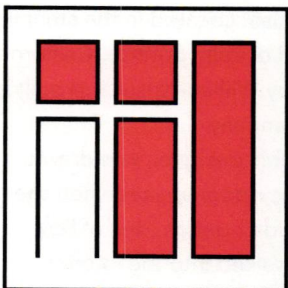


WE LOVE COLOR.

Design: Stüssi Luque Design
Photography: Cy Gilbert



HANDCRAFTED TILE MADE IN PORTLAND, OR
www.clayhaustile.com | order direct at 503.928.3076



ALDEN B. DOW
HOME & STUDIO

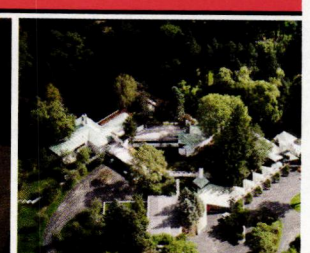
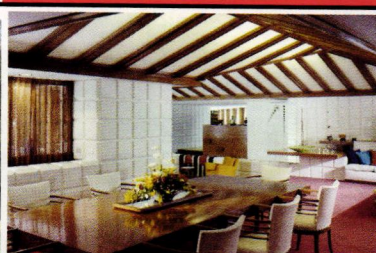
315 POST STREET
MIDLAND, MI 48640

(866) 315-7678
abdow.org



The Best of Mid-Twentieth Century Modern Architecture

The Alden B. Dow Home and Studio engages the imagination and elicits emotional responses in all who experience this powerful statement of Mid-Twentieth Century Modern architecture. Planted into an encompassing pond, the Home and Studio is alive with reflective light, soaring roof lines, diverging angles, brilliant color and the perfect balance of enticement and tranquility. It truly is an "oasis of architecture and inspiration." **Schedule your visit for architectural tours, educational programs, Michigan history and much more.**





ABOVE: SYNTHETIC TURF IS USED IN THE BACKYARD, A LOW-MAINTENANCE AND DESERT-FRIENDLY ALTERNATIVE TO REAL GRASS. A PALO VERDE TREE CAN BE SEEN TO THE LEFT, WHILE THE CENTRAL PLANTER CONTAINS A SPIKY OCOTILLO AND OCTOPUS AGAVE.

BELOW: DIVIDERS OF VARYING HEIGHTS AND CONTRASTING COLORS VISUALLY BREAK UP THE WALL OF HEDGES WHILE ADDING DEPTH.



With clean lines, lush desert plants and ample entertaining space, this exterior is worthy of the architectural pedigree of its house. Located in the stunning Vista Las Palmas neighborhood of Palm Springs, California, this 1953 home was designed by William Krisel and built by the Alexander Construction Company.

Sarah McElroy, a retired graphic designer, was drawn to the home and its incredible outdoor spaces when she purchased it in 2007. "I really didn't get an idea of how beautiful the home was until I walked into the interior courtyard in front of the home. The Palo Verde trees created a beautiful canopy over the walkway," she says.

The previous owner had remodeled the interior and garden spaces about a year prior. To better suit her personal tastes, Sarah filled in some areas with additional succulents and agave plants, while removing a few trees.

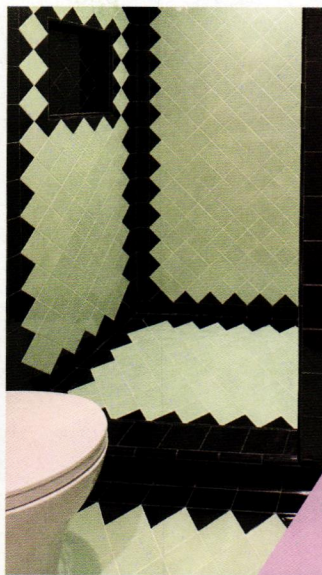
MODERN GARDEN TOUR

The home's exterior was featured in Modernism Week's 10th annual Modern Garden Tour during February 2020, an event that showcases six to eight gardens in the area. "These gardens include excellent examples of low-water-use desert plants and other materials designed to create delightful outdoor spaces that take advantage of Palm Springs' relationship to living both indoors and outdoors, along with its mountain vistas and jaw-dropping views," states the event program.

B&W Tile

Vintage Original Since 1949

Colors
We Have Those!!



- Manufactured In North Hollywood, California
- Original Vintage & Historic Colors
- Custom Colors & Color Matching Available
- Nationwide Shipping

www.bwtile.com
310-538-9579
info@bwtile.com

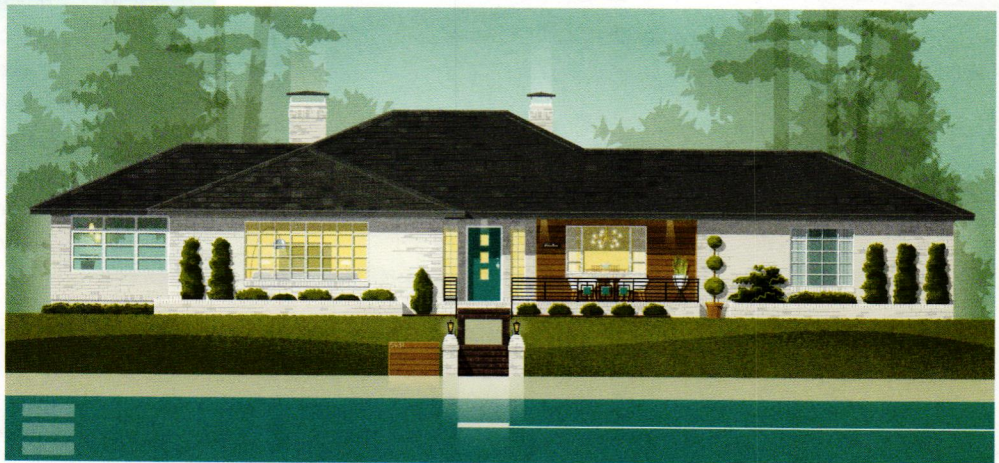
Custom HOME PORTRAITS



We all love the places we call home. We choose the colors, the furnishings, and the artwork that make our homes unique expressions of ourselves.

Let's work together to create a one-of-a-kind illustration highlighting what you love about your home!

*Get to know your home
in a whole new way*



Check out how I worked with the homeowners to transform their 1950's ranch - at visiblesolutionsbychris.com

CHRISTIAN MUSSELMAN

Illustration

christianmusselman.com



Paul Ortega, landscape and outdoor living program captain for Modernism Week, organizes the tour and shares his favorite features of Sarah's exterior: "The walled front garden has an intimate scale upon entering, much like a courtyard entrance with mature Desert Museum Palo Verdes that form a pleasing canopy overhead. Then the backyard has its own contrasting identity, with unexpected wide-open mountain views and a much different scale than the front."

READY TO ENTERTAIN

The layout of the pool area was already conducive to both peaceful repose and hosting guests, but the placement of sleek white furniture enhanced the space even more. "I arranged all the seating to flow with the yard and offer the best views of the mountains," Sarah says. "I love to use the lounge chairs when I am relaxing. They face the barbecue area and the beautiful mountains and palm trees behind my property. When entertaining, I use the fireplace area and actually all the seating areas."

With the rich green hues throughout the exterior spaces, Sarah chose neutral décor to surround the pool. "I thought white furniture looked best against the colors of the walls, plantings and mountains. I really wanted the environment to look clean and sleek, so I chose contemporary furniture," she explains.

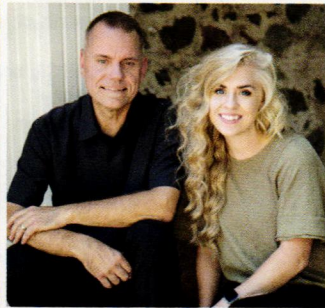
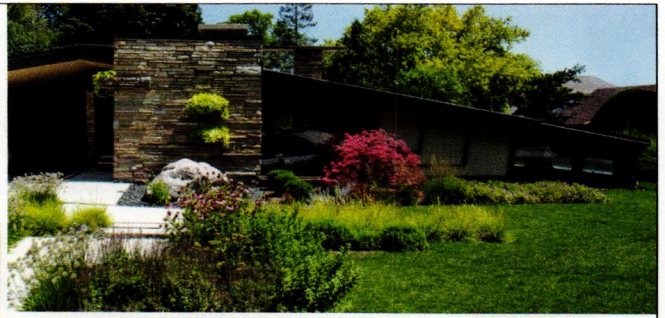
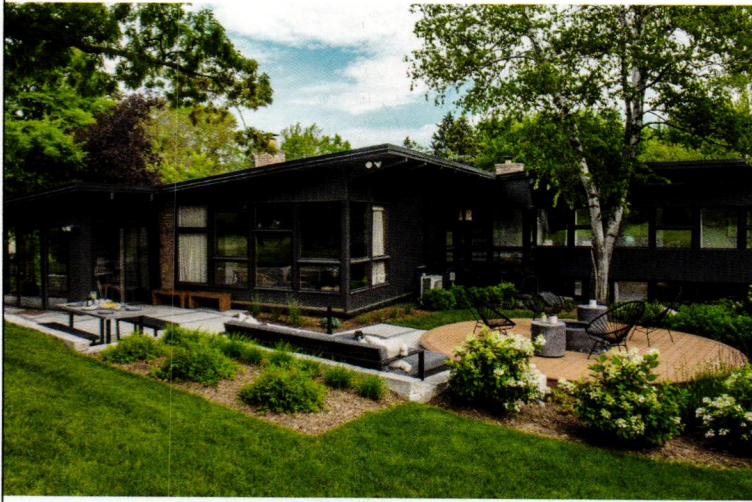
Since purchasing the home in 2007, Sarah has been enjoying it, whether entertaining or quietly reflecting. "I feel a peaceful calm in my yard. It is very soothing." 🌀

TOP: VIEWS FROM THE GUEST BEDROOMS LOOK OUT ONTO THE PRISTINE GARDEN, WHILE THE SAN JACINTO MOUNTAINS CREATE A PERFECT BACKDROP FOR THE HOME. **ABOVE:** "CLEARLY THE BACKYARD IS DESIGNED FOR LARGE GATHERINGS, CONTAINING THE DESIRABLE ELEMENTS TO SUPPORT THAT: POOL AND SPA, AMPLE FIREPIT SEATING AREA, AND A PROFESSIONAL OUTDOOR KITCHEN AND BAR," NOTES PAUL ORTEGA, MODERNISM WEEK'S LANDSCAPE AND OUTDOOR LIVING PROGRAM CAPTAIN. THE LUXURIOUS SALTWATER POOL EVEN HAS A SHALLOW TANNING LEDGE—PERFECT FOR GATHERINGS! "[THE TANNING LEDGE] IS A GREAT PLACE TO SIT AND SOCIALIZE WHEN IT'S REALLY HOT OUTSIDE," SAYS HOMEOWNER SARAH MCELROY.



ginkgo leaf studio

LANDSCAPE DESIGN



Providing landscape design throughout the United States

ginkgoleafstudio.net

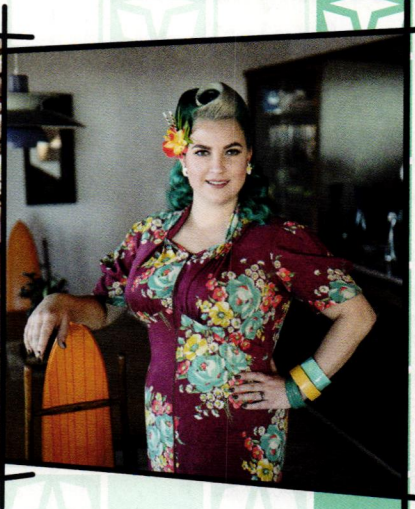
262.376.5050

MILWAUKEE WI • BOZEMAN MT



Retro is . . .

a celebration of modern vintage style and craftsmanship.



Kimber Dempsey
RETRO REALTOR.
ASSOCIATE BROKER

TheRetroRealtor.com

@KimberRetroRealtor FB.me/KimberRetroRealtor

Specializing in all types of mid-20th century retro homes, Kimber is your guide to buying and selling the most interesting, bold, and well-designed homes in Colorado.

ONE REALTYONEGROUP PREMIER

Call or Text 303-913-4505
Kimber@TheRetroRealtor.com



atomicadvertisers

ACCESSORIES & ARTWORK

Atomic Mobiles 87
323-640-0003
atomicmobiles.com

Christian Musselman Illustration 81
773-209-8506
christianmusselman.com

Crossgrove Studio 87
505-428-8132
crossgrovestudio.com

J. Willott Gallery 11
760-568-3180
jwillott.com

John Moran Auctioneers & Appraisers 9
626-793-1833
johnmoran.com

Kemelyen Ltd. 85
800-295-8498
kemelyen.store

Mid-Century Bird Houses 89
248-880-6076
midcenturybirdhouse.com

Modbox USA, Inc. 89
919-332-0894
modboxusa.com

The Shag Store 2
760-322-3400
shagstore.com

DESIGN RESOURCES & BOOKS

Asheford Institute of Antiques 84
877-444-4508
asheford.com

MODERN FURNITURE & FURNISHINGS

H3K Design 5
760-325-5400
h3khomeanddesign.com

LIGHTING

Lumens 92
877-445-4486
lumens.com

Remcraft 87
800-327-6585
atomicremcraft.com

Starlight Shades 85
starlightshop.etsy.com

TedStuff 87
tedstuff.com

MID-CENTURY REALTORS & HOUSE TOURS

Alden B. Dow Home & Studio 79
866-315-7678
abdow.org

Mid Century Homes 15
208-996-5759
mid-centuryhomes.com

MidMod Colorado/Adrian Kinney 17
303-219-0629
midmodcolorado.com

Modern Illinois 89
312-907-4085
modernil.com

Realty One Group-Lone Tree (Kimber Dempsey) 83
303-913-4505
TheRetroRealtor.com

INTERIOR & EXTERIOR DESIGN & FINISHES

B&W Tile 81
310-538-9579
bwtile.com

Clayhaus 79
503-928-3076
clayhaustile.com

Eichler Siding 25
415-883-5300
eichlersiding.com

Farley Pavers 7
760-773-3960
farleypavers.com

Ginkgo Leaf Studio 83
262-376-5050
ginkgoleafstudio.net

Kerf Design 91
206-954-8677
kerfdesign.com

Loll Designs 13
833-463-7245
lolldesigns.com

Make It Mid Century 89
844-696-6462
makeitmidcentury.com

Modwalls 23
877-439-9734
modwalls.com

Nana Wall System Inc. 21
800-873-5673
nanawall.com

VINTAGE STORES & FURNITURE REHAB

MidCentury Mobler 85
415-497-6626
midcenturymobler.com

Would You Like To Be A Mid-Century Modern Antiques Dealer?

You Can:

*Start your own Mid-Century Modern Antiques Business

*Choose the hours you wish to work

*Become a "Certified" Decorative Arts Appraiser

*Complete an internationally recognized 12 Volume Course with Diploma & Appraisal Certification (PACC & USPAP)



www.asheford.com

For A FREE Course Prospectus Booklet:

www.asheford.com

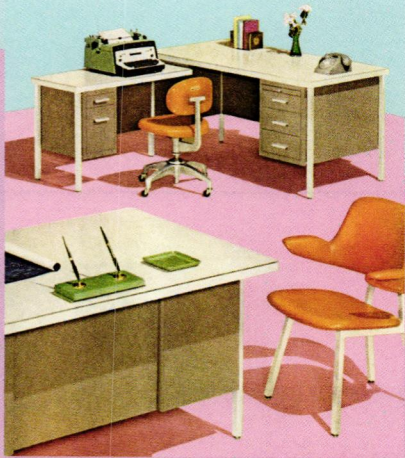
Email: asheford@mail.com

Toll free: 877-444-4508

Or write to:

Asheford Institute: 981 Harbor Blvd.

Ste. 3, Dept. 275ATR38 Destin, FL 32541



Get more of the
mid mod content
you love online at
atomic-ranch.com

- exclusive tours • travel ideas
- DIY projects • recipes
- real estate • shopping

Starlight Shades
Ultra Cool Lamp Shades

www.starlightshop.etsy.com

THE RETROFUTURISTA ART OF Kemelyen*

Planning to go Down Under?

On your next trip to the Antipodes, visit **Kemelyen's Gallery Studio** online or in-store to get some pretty ugly art to decorate your pretty modern mid-century home.

www.Kemelyen.Store
contact@kemelyen.co • Queens Arcade, Auckland CBD, New Zealand

MIDCENTURYMØBLER

NORTH AMERICA'S LARGEST VINTAGE COLLECTION
IMPORTED FROM SCANDINAVIA

info@midcenturymobler.com • www.midcenturymobler.com



Find more MCM ideas and inspiration for enjoying summer at our website.

CREDIT: MARY ELIZABETH GARDNER



From the Ground Up: Mid Century Modern Design

Explore a Florida couple's Mid Century Modern dream home, which they planned, furnished and decorated themselves.



CREDIT: BRET GUM

Cocktail Hour: Mid-Century Bar Items

Keep the party 'rolling' with these mid-century bar carts and accessories, from swizzle sticks to bottle storage and more.

CREDIT: GETTY IMAGES



One-Day Garden Projects

Get hands-on with your garden with these one-day DIY projects, including shadowboxes, birdfeeders and even an air-plant display.



CREDIT: PHOTO BY BRET GUM

Easy Breezy Entertaining in an Eichler Kitchen

Look to an Eichler kitchen for easy summer entertaining and indoor/outdoor living where boundaries are dissolved by walls of glass.



Follow us online on **Facebook**, **Instagram** and **Pinterest** daily!

LOOK FOR THIS SYMBOL THROUGHOUT THE ISSUE TO SEE WHAT EXTRA CONTENT YOU'LL FIND ONLINE.

The Sculptura Collection

Incredibly unique sculptured mobiles, tabletop stables, and wall art. Made to order, no two are alike.

Made from earth-friendly recycled acrylic in LA.

Request a FREE Art Catalog

SCAN FOR EXCLUSIVE DISCOUNT

atomicmobiles.com

Calabaza™

textiles & homewares

FROM CROSSGROVE STUDIO

calabazagoods.com

REMCRAFT UP-DOWN LIGHTS

Indoors or out — setting the standard...again.

310 Series

720 Series

other RETRO styles

Optional rain shields available for exposed areas!

GU-UDR

GU-UDS

RETRO
BY REMCRAFT

(800) 327-6585 www.atomicremcraft.com

tedstuff modern. elegant. fun.

tedstuff.com

resources

Trendsetting Tastes

Page 18

Terrazo tile: Concrete Collaborative, concrete-collaborative.com.

Lighting above sink: Pamona, pamona.eu.

Backsplash: Fireclay Tile, fireclaytile.com.

Cabinet pulls: Aker Studio, akerstudio.com.

Range hood: Futuro Futuro, futurofuturo.com.

California's Graceland

Page 30

Follow Lisa on Instagram: @cashmountainranch

See more from Alicia Beaty at stylechoiceinteriors.com

Entry bench, leather upholstered mid century beds: Poly & Bark, polyandbark.com.

Entry pillows, cowhide pillows, cowhide ottoman: Agoura Antique Mart, (818) 706-8366 or theagourantiquemart.com.

Adrian Pearsall sofa, office desk and side table: Sunbeam Vintage, (323) 330-4174 or sunbeamvintage.com.

Dining table, coffee table, leather chest of drawers: Sofi's home, (805) 351-0011 or sofishomeus.com.

Buffet, bar cart, chair and bedside table in double guest room, dresser in Vivian Suite, nightstands in Johnny Cash suite, black leather and chrome swivel chair, brutalist Lane bedroom set in maid's quarters guest room: Vintage on Point, (562) 282-3659 or vintageonpoint.com.

Liara occasional cowhide chairs, velvet dining chairs: Backyard Sanctuary, backyard-sanctuary.com.

Lamps on buffet: World Market, worldmarket.com.

Deer antler chandelier, den lamps, game room lamps: Lamps Plus, lampsplus.com.

Custom teakwood kitchen island, woodwork in backyard playhouse bar: Tom Antous, Wood Extrordinaire.

Copper pendant lights in breakfast room: Shades of Light, shadesoflight.com.

Barstools and breakfast room chairs: Grandin Road, grandinroad.com.

Custom-made guitar side table, gold glitter epoxy booth table, American flag art, pool table restoration: Mario Esparza.

Den rug, golden eagle wall hanging, guitar, Mid Century Modern clock in office, doube bed guest room lamp, Johnny Cash suite rug, maid's quarters guest room lamps: local swap meet.

Paint (white throughout): White Dove by Benjamin Moore. Johnny Cash bathroom: Witching Hour by Benjamin Moore, benjaminmoore.com.

Star embellishments on Johnny Cash suite doors: Krafty Goose, etsy.com.

Live-edge wood dining table and wagon wheel benches: Ojai Oaks Fallenwood Studio, joshuam.mariani@gmail.com.

Guest bath shower wall tile, Vivian Suite bathroom pink subway tile: Elysium Tile, elysiumtile.com.

Guest bath shower pan tile: Anthology Tile, anthologytile.com.

Guest bath floor tile: Garzina Marquinia, tile-shop.com.

Johnny Cash suite bathroom 2x2 bardiglio marble tile for floors and shower pan: Natural Stone Resources, Inc., (714) 821-5400 or nsrstone.com.

Johnny Cash suite bathroom vanity counter tile: Studio Series/Volcanico, adexusa.com.

Vivian Suite wood-look floor tile: Le Bois Acero from Ceramic Décor, ceramicdecor.com.

Marble tile counters in Vivian Suite bathroom: Norwegian Rose, riadtile.com.

Floor and shower pan tile in maid's quarters bathroom: Mediterranean hex in Cotto, epcamerica.com.

Sink vanity and mirror in maid's quarters bathroom: West Elm, westelm.com.

All tile sourced from Tile Co: tilecodist.com.

Rescued Ranch

Page 54

To contact Shannon Ggem, visit her website shannonggem.com or email her at shannonggem@gmail.com.

Primary bath

Tile: All tile in the primary bath is from Wow Design Eu, wowdesigneu.com:

Wow Design EU Puzzle Collection: 18.5 cm x 18.5 cm.

Pottery Collection Square Natural Matte: 15 cm x 15 cm 123884 (W18).

Cosmic Square Natural: 15 cm x 15 cm 123887 (W21).

Elle Floor Graphite Stone Matte: 123833 (W26).

Puzzle Square: 18.5 cm x 18.5 cm.

Square Dark Wood Matte: 123826 (W12).

Bathtub: Americh Beijing, americh.com.

Faucets: Riobel Kubik, houseofrohl.com.

Pendant light: Hudson Valley Lighting Caswell, hvlgroup.com.

Kitchen

The following appliances are all from Thermador, thermador.com:

Single wall oven, 30": PO301W

Built-in microwave: MD24WS

Downdraft: UCVM36XS

Gas cooktop, 36": SGSP365TS

Built-in dishwasher: DW HD770W PR

BI All Refer: T30IR905SP

ALL freezer: T30IF905SP

Primary bedroom

Wallcovering: Knoll Textiles in Tangent pattern, Method color #WC23831, knoll.com.

Bedding: custom by Ggem Design, shannonggem.com.

Powder bath

Slab: Walker Zanger Fragments Terrazzo Carrara 2cm, honed, walkerzanger.com.

Living room

Fireplace: Malm Zircon in custom finish to match RAL 2010, malmfireplaces.com.

Authentic & Updated

Page 64

For more on Bethann Prittie, visit bethannprittie.johnlscott.com.

Bathroom mirrors: Ikea. Visit ikea.com.

Curved sofa: Apt2B. Visit apt2b.com.

Front-door hardware: Rejuvenation. Visit rejuvenation.com.

Flooring: Armstrong corlon vinyl. Visit armstrongflooring.com.

Piano: Vintage Baldwin Acrosonic.



modboxUSA

Mid-Century Modern Mailbox

modboxusa.com | 919.322.0894

A Bird House
doesn't have
to be boring



Visit midcenturybirdhouse.com
to upgrade your back yard.

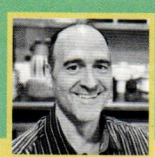
248-880-6076

jeff@midcenturybirdhouse.com

Your Chicago-Area
Mid-Century Modern &
Ranch Homes Specialist



MODERN ILLINOIS
modernil.com



Lou Zucaro
lou@modernil.com • 312.907.4085
Baird & Warner
754 W. Northwest Highway, Barrington, IL 60010



Now available!



**SparkleStar™ in five
true mid-century pastels**

www.makeitmidcentury.com

lastlook



One Giant Leap for Mankind

How the trampoline bounced its way into American culture.

By Ian McMaster | Photo courtesy of Getty Images

THE ORIGINS OF THE TRAMPOLINE CAN BE traced to ancient civilizations like China, Iran and Egypt. The Inuit people in Alaska used walrus skin to launch each other in the air for games, rituals and scouting their surroundings. Similarly, the Persians are said to have used a type of trampoline made of stretched animal hides for tumbling and acrobatics. However, the modern trampoline only began to take shape in the early 20th century.

In 1934, two American gymnasts, George Nissen and Larry Griswold, created the first prototype in Nissen's garage in Iowa. Inspired by trapeze artists falling into safety nets and their desire to improve their own training methods, they developed a piece of equipment composed of a canvas sheet stretched over a steel frame with coiled springs, which provided the continuous bounce necessary for gymnastics training. This revolutionized the world of gymnastics and acrobatics, offering athletes a safe and effective way to practice complex techniques.

Throughout the mid-20th century, trampolining gained

popularity across a surprising range of industries. After the start of World War II, the U.S. military used the trampoline to teach pilots how to reorient themselves after difficult air maneuvers. During the space-race era, the trampoline was introduced to NASA for astronauts' training. And in 1964, trampolining made its Olympic debut as a demonstration sport in Tokyo, later becoming an official Olympic sport in 2000.

By the 1970s, trampolining made its way into American culture. Amusement parks filled with trampolines popped up across the country, giving children and adults the opportunity to soar. Manufacturers started making smaller, affordable trampolines marketed to the whole family.

Today, trampolining continues to evolve, with advancements in materials and safety features for the enjoyment of people worldwide. In an age marked by technological advancement and rapid change, the enduring appeal of the trampoline serves as a reminder of the joy and wonder found in the simple act of bouncing.



KERF

Plywood cabinets for
modern homes,
handmade in Seattle
since 1999.

kerfdesign.com

LUMENS

Enlightened by Design



Lumens.com

Every Outdoor Pendant by Palacek • Selma Outdoor Chair by Four Hands • Roma Outdoor 3 Piece Sectional by Four Hands
Basil Outdoor Round Coffee Table by Four Hands • Tundra Outdoor Rug by Vincent Sheppard

