

atomic

MID CENTURY MARVELS

ranch



KITCHENS + BATHS IN FOCUS
Product picks, bonus tours
and design insights

MOD HOLIDAYS!
Your MCM gift guide and festive
decorating ideas for a cool yule



MODERN PERFORMANCE AND UNMISTAKABLE STYLING

When your kitchen transforms into a space fashioned uniquely to your style, you experience an unparalleled sense of home. Even when embracing popular kitchen design trends, the result is completely original once merged with the unmistakable styling of Northstar appliances from Elmira Stove Works.

Get up close and personal with your new appliances from Elmira. The chrome is real, the finishes are polished to perfection, and the performance is fully modern. From interior LED refrigerator lighting and filtered water dispensers to sealed gas burners and true convection ovens, the features are rich, and the Canadian handcraftsmanship is truly remarkable.

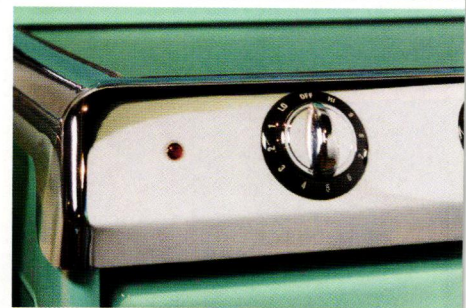
Begin your design journey with our industry-leading kitchen visualizer. Visit us online and craft a style all your own.

elmirastoveworks.com/visualizer/northstar



ELMIRA
STOVE WORKS

elmirastoveworks.com
800-295-8498



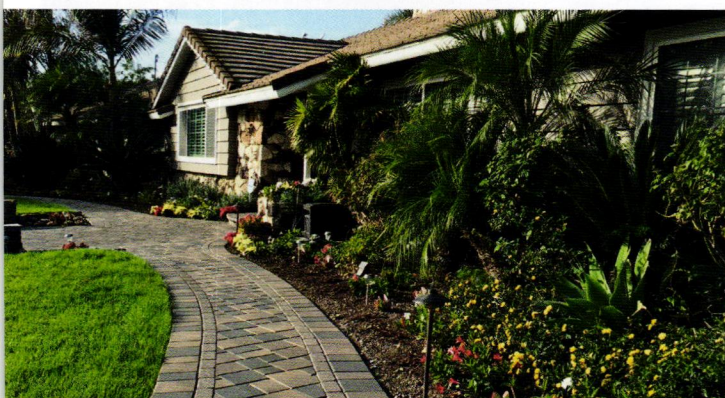
FARLEY

INTERLOCKING PAVINGSTONES

WHY CHOOSE ONE OF CALIFORNIA'S MOST ESTEEMED INTERLOCKING PAVING COMPANIES?



Selecting Farley Pavers to help you clean or replace the pavers for your driveway, pool decks, entries, and streets is a smart decision that offers the best return on investment. Partnering with a skilled and trustworthy company guarantees that you receive the highest quality of service for your money!



farleypavers.com
760-773-3960

We would love to see you in person!
Showroom address:
39301 Badger Street #800
Palm Desert, CA 92211

Contents Winter 2024



HOUSE TOURS

- 32 An MCM Time Capsule**
A custom-built 1957 mid-century home is updated for today's modern lifestyle.
- 44 Stewards of the Past**
This 1957 gem in Denver, Colorado, has only changed hands twice and is almost entirely original.
- 54 It Takes a Township**
A 1970s Acorn Deck House is renovated for a growing family with the help of local MCM enthusiasts.

FEATURES

- 64 A Very Vintage Holiday**
Family heirlooms and carefully chosen secondhand finds are the heart and soul of this merry Eichler.
- 76 By the Fireside**
Cozy yet sleek fireplace inspiration for any mod home.

COLUMNS

- 8 Cool Stuff**
Our picks for warm-toned living room décor for the cold winter months.
- 10 Period Picks**
Cool elements to create a warm space to cook your hot meals.
- 14 On Design**
How to select kitchen appliances that fit your MCM style while delivering the functional features you need.
- 22 Renovations for Two**
An expanded kitchen with reimagined renovations opens up a world of entertaining for empty nesters.
- 28 Function & Flow**
Efficiency was emphasized in upgrading this classic California Eichler.

DEPARTMENTS

- 6 Editor's Letter
- 12 In Season
- 16 Modern Makers
- 20 Mod Merry Marketplace
- 80 Web Update
- 84 Advertisers
- 88 Resources
- 90 Last Look



54

cover

Cover photography by Lara Kimmerer

Cover design by Gabby Oh

44



ATOMIC RANCH (ISSN 1547-3902) is published 6 times per year (Spring, Summer, Renovation Guide, Fall, Winter, Design Issue) by EG Media Investments LLC, 3622 Lyckan Parkway, Suite 3003, Durham, NC 27707. Periodical postage paid at Durham, NC, and additional mailing offices. **POSTMASTER:** Send address changes to Atomic Ranch c/o EG Media Investments LLC, ColorArt, 101 Workman Ct., Eureka, MO 63025. **Canadian Post:** Publications Mail Agreement #40612608. Return undeliverable Canadian addresses to: PITNEY BOWES, INC., P.O. Box 25542, London, ON N6C 6B2, Canada. GST #855050365RT001. © 2024 by EG Media Investments LLC. All rights reserved. Reproduction of any material from this issue in whole or in part is strictly prohibited.

editor's letter



NO PLACE LIKE HOME

THERE'S NOTHING LIKE the feeling of coming home. I've spent the fall season settling back in from travel: My brother got married in Hawaii! He's the youngest in the family, so it's a momentous and extra-special occasion that was kicked off with bridal-party trips to the deserts (Palm Springs and Las Vegas) and culminated in the big day. In the afterglow of all the love and festivities, and as much as none of us wanted wedding season to end, it was still nice to come home.

Marry that (if you will) with the fact that we all put so much hard work, TLC and time into our homes—restoring or perfecting their modernist character and history. Being home and sincerely enjoying the fruits of that labor is all the more golden. Winter, especially, is the time to bask in that, invite our loved ones to bear witness to it and to truly celebrate the meaning of home.

This issue is filled with homes that represent that pride. Pride from pouring your heart and soul into the work of preserving and maintaining our Mid Century Modern gems. I hope you turn the last page inspired to keep going and armed with all sorts of ideas on how you'll do it. Thank you so much for being here and keeping *Atomic Ranch* going.


Jackie Torres

Get connected!

Email: editor@atomic-ranch.com | Online: atomic-ranch.com | [@theatomicranch](https://www.instagram.com/theatomicranch)

**atomic
ranch**

WINTER 2024 • No. 84

EG MEDIA INVESTMENTS LLC

Rima Dorsey: Managing Director/Publisher

EDITORIAL

Content Director and Brand Leader: Jackie Torres

Managing Editor: Meryl Schoenbaum

Associate Editor: Ian McMaster

Web Editor: Jolene Nolte

DESIGN

Design Director: Gabby Oh

CONTRIBUTORS

Patricia Kline, Brenda N. Klug, Michelle Mastro, Dana Maurer,
Elise Portale, Laura Shimko, Victoria Van Vlear

CONTRIBUTING PHOTOGRAPHERS

Katie Doyle, Bret Gum, Lara Kimmerer, Arris Photography,
Mermaid & Me Photography, John Shum,
Spacecrafting, Atom Stevens

ADVERTISING

Suzy Bailey: Account Representative

Theresa McGrew: Account Representative

Christina Walker: Account Representative

Karen White: Account Representative

Sebastian Tirkey: Advertising Traffic Coordinator

Vipin Marwaha: Advertising Traffic Manager
For advertising inquiries: rdorsey@egmediamags.com

OPERATIONS

Shailesh Khandelwal: Vice President - Operations

Mohammad Danish: Manager - Subscriptions

Surajpal Singh Bisht: Prepress Manager

Manzoor Ahmed & Deepak Kumar: Production, Newsstand
and Circulation Executives

EDITORIAL, PRODUCTION & SALES OFFICE

3622 Lyckan Parkway, Suite 3003, Durham, NC 27707

(844) 330-6373, Fax (972) 920-3737

www.atomic-ranch.com

ATOMIC RANCH (ISSN 1547-3902) is published 6 times per year
(Spring, Summer, Renovation Guide, Fall, Winter, Design Issue)
by EG Media Investments LLC,

3622 Lyckan Parkway, Suite 3003, Durham, NC 27707.

Periodical postage paid at Durham, NC,

and additional mailing offices.

POSTMASTER: Send address changes to *Atomic Ranch* c/o
EG Media Investments LLC, ColorArt, 101 Workman Ct., Eureka, MO
63025. Canadian Post: Publications Mail Agreement #40612608.

Return undeliverable Canadian addresses to: PITNEY BOWES, INC.,
P.O. Box 25542, London, ON N6C 6B2, Canada.

GST #855050365R001.

© 2024 by EG Media Investments LLC. All rights reserved.
Reproduction of any material from this issue in whole or
in part is strictly prohibited.

CUSTOMER SERVICE

EG Media Investments LLC

3622 Lyckan Parkway, Suite 3003

Durham, NC 27707

**SUBSCRIPTIONS, ADDRESS CHANGES, RENEWALS,
MISSING OR DAMAGED COPIES AND FOREIGN INQUIRIES**

BOOKS, MERCHANDISE AND REPRINTS

(844) 330-6373

subs@egmediamags.com

customerservice@egmediamags.com

BACK ISSUES

<https://www.atomic-ranch.com/single-issues/>

**LETTERS TO THE EDITOR, NEW PRODUCTS OR TO
CONTRIBUTE A STORY OR PHOTO**
editor@atomic-ranch.com

SUBSCRIPTION RATES

\$29.95/1 year, \$52.95/2 years. Foreign, \$59.95 per year.

\$112.95 per 2 years payable in U.S. funds.

Atomic Ranch single copy price is \$9.99;

Renovation Guide and *Design* issue price is \$10.99.

Please allow 6 to 8 weeks for new subscriptions to begin.

SIXSAILS GROUP

Prashant Upadhyaya: Portfolio Manager

Wanda Negron: Human Resources



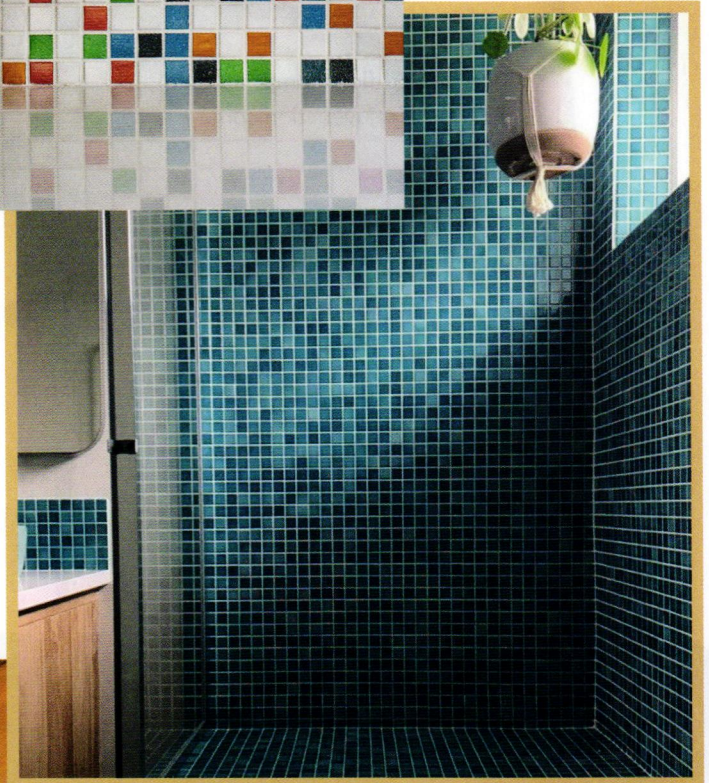
This magazine is purchased by the buyer with the understanding that information presented is from various sources from which there can be no warranty or responsibility by EG Media Investments LLC, as to the legality, completeness or technical accuracy.

modwalls tile

employee owned since 2005



*Bring your dream space to
fruition with our versatile
tiles and vibrant
mod-inspired hues.*



use code
ATOMIC for
\$20 in free
samples!

coolstuff

By Ian McMaster

Cozy Up

Our picks for warm-toned living room décor for the cold winter months.



Brentwood floor lamp,
\$899. Visit rejuvenation.com.



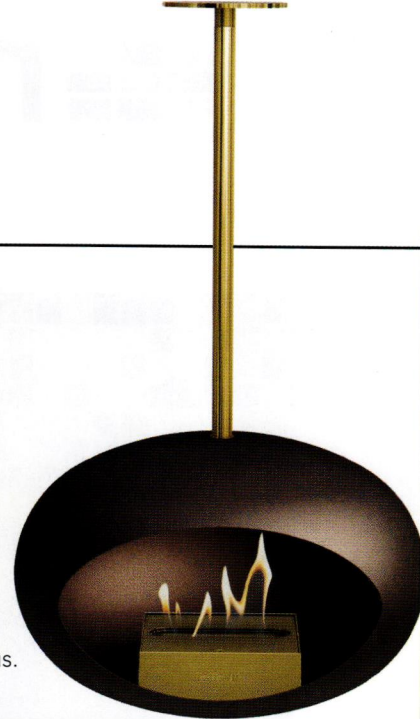
River coffee table, \$526. Visit joybird.com.



Edel media unit, \$3,745. Visit dwr.com.



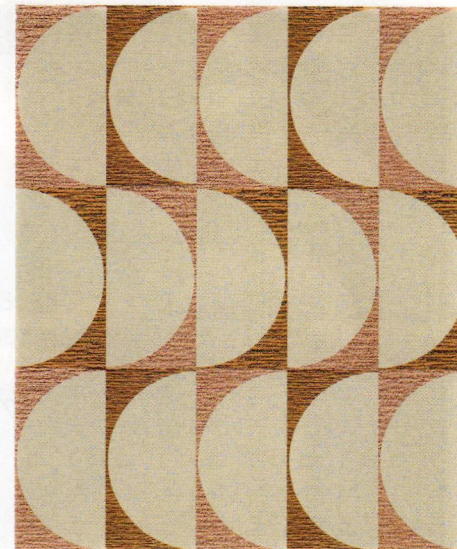
The Clementine sofa, \$2,829. Visit casaramodern.com.



Mocca Sky fireplace,
\$2,195. Visit lefeufires.us.



Woodrow Skandi 39" leather chair,
\$1,399. Visit kardiel.com.



Lunaire area rug, \$1,290. Visit flor.com.



Fine art, gifts, books and apparel by the artist Shag
745 N. Palm Canyon Drive, Palm Springs
760.322.3400 • shagstore.com

Above: "Recent Acquisitions" (detail), a new 13 color silk screen edition
Right: "Ku-Kua," a cold-cast bronze sculpture edition available exclusively from the Shag Store



periodpicks



1

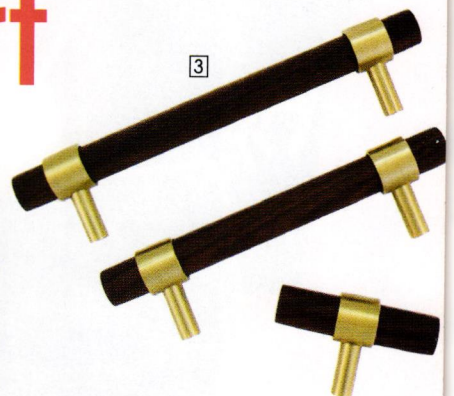


2

By Ian McMaster

Comfort Food

Cool elements to create a warm space to cook your hot meals.



3

1. Mid Mod Squares (Manhattan Blend), \$64 per sq. ft. Visit mercurymosaics.com.
2. Arya LED pendant, \$723.80. Visit inforlighting.com.
3. T-Bar brass + wood handles, \$9.71. Visit hooksandknobs.com.
4. Cesca upholstered stool, \$1,614. Visit dwr.com.
5. Douglas Tatami bar cabinet, \$1,299. Visit westelm.com.



4



5

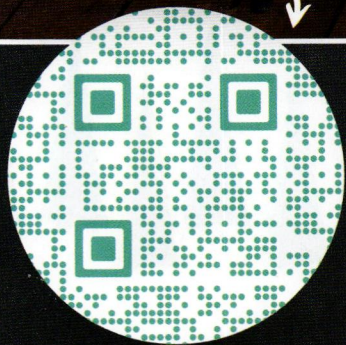


mid-century homes

By Anthology



SCAN FOR BOISE'S
BEST HOMES



WE MAKE **MID-CENTURY DREAMS** COME TRUE



@boisemidcenturyhomes

inseason

Mod JUL!

Check out these retro holiday picks to complete your mid-century Christmas décor. By Ian McMaster

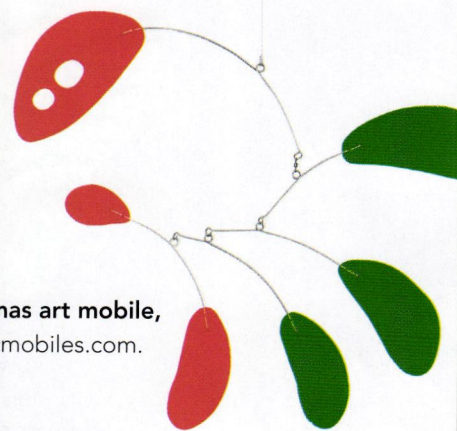


Bauhaus-Era handmade Christmas ornaments, boxed set of 12, \$195. Visit fjorn.com.

Scandinavian fir tree, starting at \$319.99. Visit treetime.com.



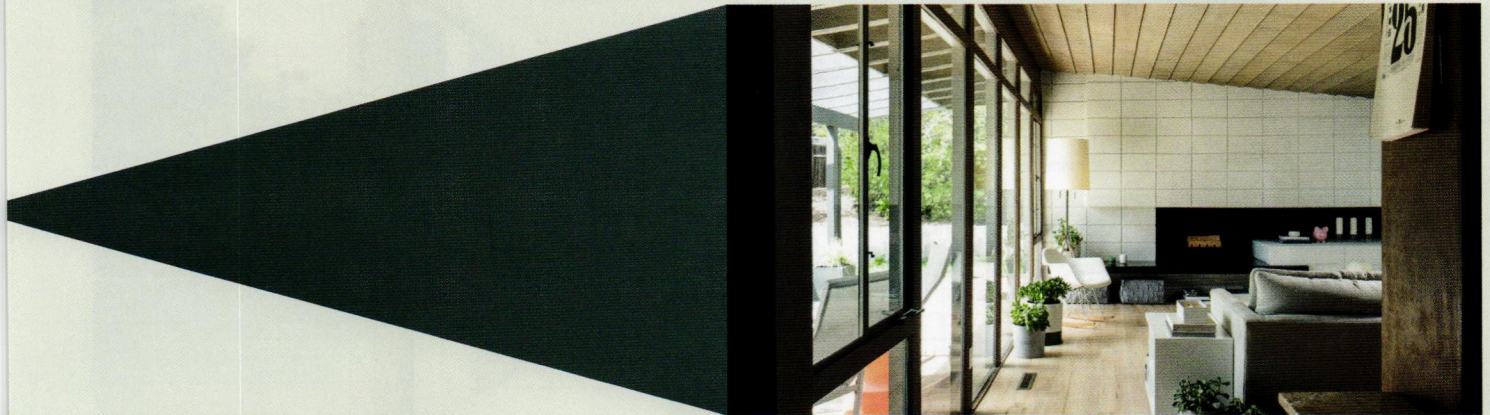
Tru-Tone Classicolor Christmas light set, \$29.95. Visit tru-tone.com.



AstroCat Christmas art mobile, \$129. Visit atomicmobiles.com.

Tannenbaum Mod assorted trees, \$14. Visit annieselke.com.





SPOTLIGHT ON ARAPAHOE HILLS

Littleton, Colorado

The Denver metro has over 6,500+ Mid Century Modern Homes; But there are only a handful of these homes found in enclaves (meaning all the homes are MCM homes). Arapahoe Hills, is a stunning example of one of our MCM enclaves. Arapahoe Hills homes were all built by Clyde Mannon, and designed by the famed Denver Architect: Bruce Sutherland. The homes in this enclave possess many hallmark MCM traits: The use of stone, brick, wood, and the connection to the outside through glass walls, and many exits from inside, to out!

Now, more than ever, who you choose as your real estate partner truly matters. Adrian Kinney has 13+ years of Real Estate sales experience, over \$140m in sales volume, and 250+ transactions (6 of which are in Arapahoe Hills). When it is time to buy or sell your MidMod in the Denver Metro area, choose the experience and expertise of Adrian Kinney.

MIDMOD
COLORADO

Adrian Kinney - Independent Broker | www.midmodcolorado.com

The Key Ingredient

How to select kitchen appliances that fit your MCM style while delivering the functional features you need.

By Laura Shimko | Photos courtesy of iio



WHEN RENOVATING YOUR KITCHEN, don't forget the impact your appliances have on the overall look and feel of the design. Choosing appliances that reflect your unique style by delivering a classic mid mod vibe with a chic edge will spice up your kitchen.

With the perfect blend of functional features and a sleek, hip retro design, iio (pronounced eye-o) offers a range of appliance options certain to elevate your culinary space. James Brown created iio with the innovative mission to create appliances with a mid mod appearance. To help you navigate through the twists and turns of choosing the right appliance for your home, James offers his seasoned perspective on what you should consider when selecting atomic appliances.

GO RETRO

Rather than opting for a standard stainless-steel, cookie-cutter fridge or range, explore styles that reflect the fun and uniqueness of mid-century design. "iio's retro and retro-style fridges and stoves not only bring back the past but create a bold statement piece that often becomes the talking point of the room," James explains. The company's "Retro" refrigerator series highlights this with its blend of nostalgic style and functional features.

GO COLORFUL

A pop of color will give your kitchen an extra bit of flair. James recommends finding appliances with a variety of color options. All of iio's "Retro" series of fridges come in several distinctly retro colors to make a bold statement. "The Retro RR2 is the largest fridge we carry, at 12 cubic feet, and it comes in cream, light green, light blue and pink," he says.

GO COMPACT

The footprints of mid-century kitchens tend to be on the smaller side. Choose appliances that are distinctive, functional and on a slightly smaller scale to keep your space from feeling too cramped.

iio's "Fun" series brings together stylish design and space-saving features with the narrowest fridge they offer. "It is bigger than a bar fridge, but smaller than a traditional fridge," James explains. "It also has a bottom freezer with pull-out drawers for convenience." If you're looking for something even more compact for entertaining, their wine cooler has the same fun retro style with a variety of color options. It can be tucked away anywhere in the home and will become a statement piece due to its extremely attractive design.

GO GREEN

In today's climate, it helps to choose options that not only meet your style and functional requirements but are also environmentally friendly. All of iio's products are Energy Star-certified and 100% CFC free, making them a smart and healthy option. iio also uses one of the newest and most eco-smart insulation materials on the market called cyclopentane, which has zero ozone depletion and a low global warming potential. "Our manufacturing processes focus on limiting the environmental impact," James says. 🌱



--- THE RETRO MOD RM1 REFRIGERATOR WITH BOTTOM FREEZER IS A STYLISH ALTERNATIVE TO A REGULAR FRIDGE IN A MORE COMPACT PACKAGE, OFFERING GREAT STORAGE CAPACITY FOR SMALLER SPACES. FEATURES SUCH AS A FAST-CHILL FUNCTION; TOP FROST-FREE, FRESH-FOOD AREA AND CONVENIENT PULL-OUT FREEZER DRAWERS.

/ KEEP IT COLORFUL /

Consider these appliance selections from iio to take your mid mod kitchen design to the next level.

FUN FF1 REFRIGERATOR WITH BOTTOM FREEZER IN PINK

Specs:
57" high and 21.5" wide
7 cubic feet

Why it's great:
Compact yet more spacious than a mini fridge or wine cooler, this sleek fridge is perfect for an apartment, dorm, lunch room, garage or basement. It also has an anti-bacterial liner and fingerprint-resistant exterior door to keep things tidy.

RETRO RR2 IN LIGHT BLUE

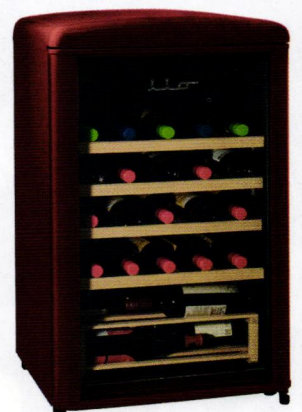
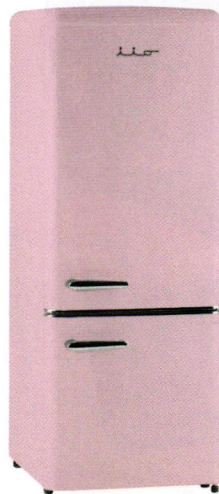
Specs:
74.6" high and 23.6" wide
12 cubic feet

Why it's great:
This chic, frost-free refrigerator has a rich finish with specially designed chrome handles and accents, a large bottom freezer, bright LED lighting and easily adjustable shelves. Throw in an adjustable wine rack and a deep crisper drawer and you have great space in a retro masterpiece.

WINE COOLER WC1

Specs:
35.25" high and 21.5" wide
4.4 cubic feet

Why it's great:
This freestanding 30-bottle capacity fridge has a reversible door with concealed hinges which allow you to position the fridge exactly where you need it. Upfront electric controls also allow you to manage the single zone temperature easily which 4 adjustable slide out shelves make accessing your wine even easier.



READY TO TAKE YOUR KITCHEN APPLIANCES TO THE NEXT LEVEL? USE CODE **ATOMICRANCH** TO **GET 6% OFF ALL IIO PRODUCTS** (INCLUDING ALREADY DISCOUNTED ITEMS) EXCLUSIVELY AT iiokitchen.com.

modernmakers

Hazy Sunshine

Retro-inspired outdoor décor, perfect for entertaining poolside.

By Michelle Mastro | Photos by Katie Doyle, Mermaid & Me Photography



HAZY SUNSHINE'S UMBRELLAS USE VINYL, A WEATHER-RESISTANT MATERIAL THAT INVOKES AN MCM FEEL BUT STILL LOOKS AHEAD TO THE FUTURE OF SUSTAINABILITY BY BEING LONG-LASTING.

SOCIAL MEDIA IS the launch pad for many things these days, and in the case of Julianna (Jules) Berg and Alexandra (Alex) Hardin-Gonzalez it's responsible for helping to blossom a design-minded friendship and business. Hazy Sunshine, a bespoke outdoor living décor brand they created together, offers high-quality items reminiscent of the past but with new materials that will stand the test of time. The patterns and colors lean funky, vintage, retro and unique, with many of them inspired by archived designs.

"We were both members of a Mid Century Modern Facebook group that I was an admin for. I saw what she was doing and I instantly fell in love," Alex says. "We started talking and a friendship bloomed over the course of about a year. We had a great time bouncing ideas off of each other—we believe the universe definitely brought us together. I have relocated to the cornfields of Iowa and am having the best time building our business!"

Jules came from a family of makers. "I think I learned to sew when I was about 7 or 8 from my aunt who owned this incredible costume shop with thousands of costumes," she says. Once Jules' kids arrived, her interest in sewing was reignited. She started making blankets and other simple items, but her work soon morphed into apparel and then finally outdoor accents.

BEST PERFORMING FOLDING GLASS WALLS



NanaWall creates the most innovative folding glass walls that enhance mid-century residential spaces.



Easy Operation: Smoothest and easiest operation of any folding glass wall as panels glide to their open or closed position.



Superior Performance: Exceptional resistance against wind-driven rain. Energy-efficient panels keep extreme weather out. Air, water, structural, and forced entry tested.



Unique Benefits: Slimmest profiles. Panels can stack either to the left or right—inswing or outswing. Barefoot-friendly and ADA-compliant sill designs.



Available in three different material choices:



ALUMINUM



CLAD



WOOD

NanaWall®

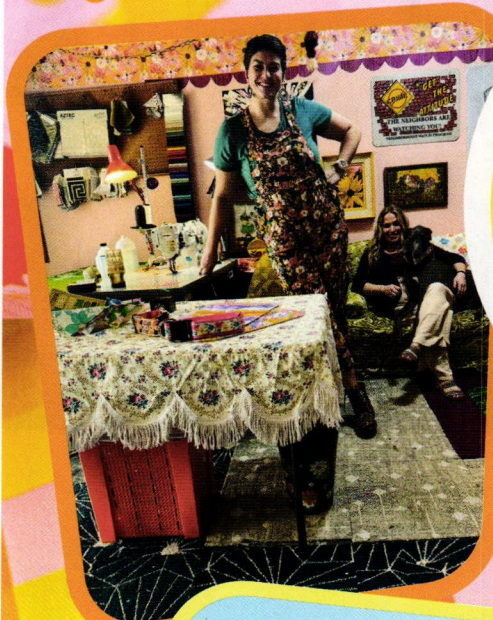
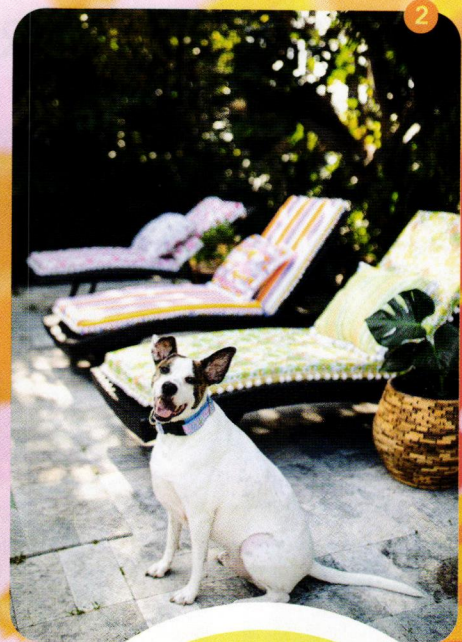
Visit NanaWall.com | 800 873 5673

WORKING TOGETHER

Though Jules had always loved Mid Century Modern style, a beautiful sewing cabinet she found and fell in love with solidified her mod aesthetic and ultimately connected her to Alex. "We both have very different styles, but they somehow work together to create magic," Alex says. "Our favorite part is always research and development and digging through different patterns with new ideas in mind. We are constantly creating; we are definitely not short on concepts. We embrace each other's wild ideas, which I think is a huge part of working together creatively, and our individual skill sets match perfectly to create a solid team."

We think some of the best—and most innovative—examples of the brand are the double-sided Retrorevolve cushions. "These are amazing, and nobody else is doing anything like them at the moment," Alex says. "Customers can mix and match or have two matching sets depending on what side of the cushion they use." Jules has a hard time picking out her favorite item from the brand. "It's like having to choose a favorite child," she says. Which makes sense, since she has named all her umbrellas after her children: Iris, June and Mabel.

Working within the Mid Century Modern space speaks to Alex's aesthetic—and soul—in many ways. "I love how versatile MCM furniture and décor is," she says. "The thrill of finding new pieces and designers, the patterns are super warm and inviting, and the wood tones take you back in time. My first experience with MCM was at my abuela's house, which was heavily designed in the MCM vibe, including a sunken living room, which I adored. I definitely think that has something to do with my affinity for MCM. It's also next to impossible to find quality and affordable furniture pieces as of late. They just don't make them like they used to!" 🌿



1. TREAT YOURSELF TO GROOVY MID-CENTURY GLAM WITH THE RETROREVOLVE "SECRET GARDEN" CHAISE CUSHION.

2. "THERE WAS NEVER AN INTENTION TO SEW PATIO UMBRELLAS AND CUSHIONS UNTIL I MADE MY FIRST ONES, BUT EVERYTHING LEADING UP TO THAT TAUGHT ME WHAT I NEEDED TO REALLY FLOURISH WITH MY SEWING," JULES SAYS.





Consign Today | Art + Design

We are currently accepting quality consignments of Mid-Century & Contemporary art, design, furniture, pottery, bronzes, jewelry, and more for our upcoming auctions.

Auctions • Private Sales • Appraisals

We are a family-owned auction house delivering both world-class service and results for 55 years.
For your free auction valuation, or for more information, please contact us at info@johnmoran.com.

JOHN MORAN

AUCTIONEERS & APPRAISERS

Est.
1969

55 Years





Mod Merry

Happiness doesn't result from what we get, but from what we give.

By Ian McMaster



Kate McEnroe New York

Infuse your Christmas with retro '50s kitsch charm. Keep your drinks cool, serve up festive cocktails and add a touch of nostalgia—all in sleek Mid Century Modern style.

Reg \$160.99. Discounted price \$129 with promo code AR2024.

(917) 455-5322

Visit katemcenroeny.com.



Trevor Wayne

The Trevor Wayne store is a fantastic place for one-of-a-kind original art, décor and gifts. Leaning toward a fun pop art, rock 'n' roll edge, it's hard not to smile walking in. If you're looking for a statement piece, this is the place!

\$65-\$445

(442) 304-8934

Visit trevorwayne.com.



Lume Home

Lume Home (pronounced loom, as in "to illuminate") makes original ceramic lamps, dishware and other functional objects inspired by Modernism, bringing handmade warmth and distinction to every room.

\$525-\$650

(503) 997-3080

Visit lumehome.com.



Car Pool Tables

Real car parts, wheels, working lights, chrome and professional billiards playing top! Adorn your home and impress guests with a new Mustang, Shelby, Camaro Pool or 1959 Corvette Pool Table.

Starting at \$19,995.

(727) 827-8268

Visit CarPoolTables.com.

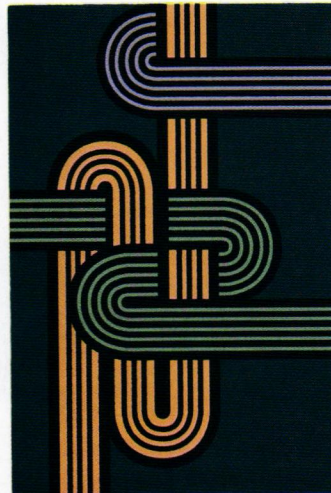
Marketplace



Modfire

Modfire has collaborated with the artist SHAG to create a Limited Edition series of Mini-Tikis. These 2-foot-tall fire features burn indoors or out on ethanol and will ward off all evil spirits and keep the right kind of spirits flowing.

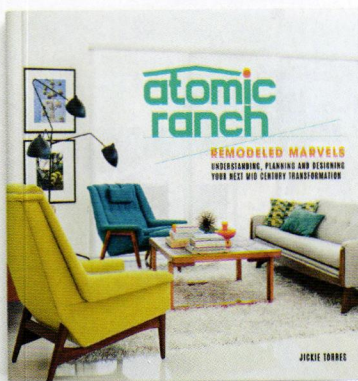
Starting at \$499
(855) MOD-FIRE
Visit modfire.com.



Lucy Tupu Studio

Introducing 'Boulcott St' from our latest rug collection 'Te Aro.' Inspired by retro interiors, it features designs that capture the vintage charm of the era. Custom made to order.

From \$6,800
(212) 300-5002
Visit lucytupu.com.



Atomic Ranch

Atomic Ranch: Remodeled Marvels equips you with everything you need to know to tackle your renovation dreams, avoid project nightmares and craft the stunning modernist gem you've always wanted.

\$47.20
Visit atomic-ranch.com.



Matthew Smith Studios

Matthew Smith Studios creates handmade modern jewelry and accessories in sterling silver, rosewood and colorful cast resin. They offer a wide range of colors and styles with most items under \$200.

\$45-\$695
(828) 785-4149
Visit matthewsmithstudios.com.

atomickitchens





RENOVATIONS FOR TWO

An expanded kitchen with reimagined renovations opens up a world of entertaining for empty nesters.

By **Brenda N. Klug** | Photography by **Arris Photography**

WHEN YOU LIVE IN A HOME FOR A LONG TIME, it can become part of your DNA. For one Fort Collins, Colorado, couple, a 1957 Mid Century Modern home did just that. The couple raised their two children there and now that the kids are adults and have moved out, the couple embraced the opportunity for a fresh start.

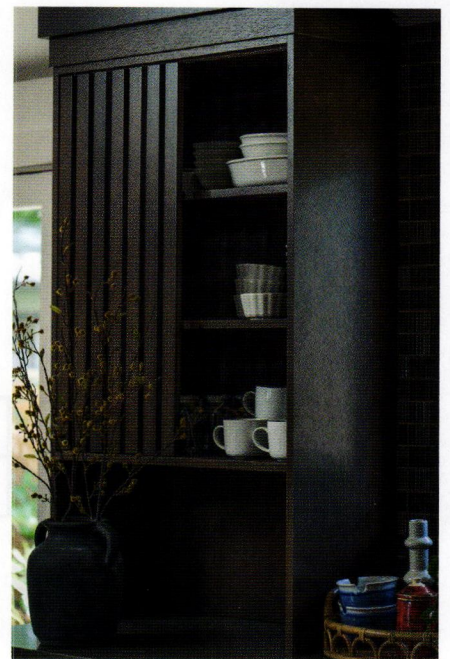
TOP: THE SLATS IN THE UPPER CABINETRY ARE A NOD TO MID-CENTURY DESIGN. THESE SLIDING SLAT DOORS OFFER A PLAYFUL TOUCH TO THE KITCHEN AS WELL AS PROVIDING A LITTLE PEEK OF THE DISHWARE INSIDE.

LEFT: TO MAKE THE KITCHEN FEEL EVEN MORE SPACIOUS, FORGE & BOW DECIDED TO VAULT THE CEILINGS. THE CEILING BEAMS ARE MICROLAMS PURCHASED FROM A LOCAL BUILDING SUPPLIER. ANNIE AND THE TEAM CHOSE LIGHT-COLORED WALLS FOR A SPECIFIC REASON: "THE CREAMY WALLS HELP SUPPORT A WELL-LIT, CLEAN AREA," ANNIE SAYS.



LEFT: THE LOWER CABINETS AND ISLAND BASE ARE PAINTED IN SHERWIN-WILLIAMS' SAGE GREEN LIGHT AND PROVIDE A POP OF COLOR. THE CLAY TILES ON THE BACK WALL WERE PLACED IN A HORIZONTAL PATTERN. "THE VEINING OF THE STONE ISLAND WAS ACTUALLY IN THE SAME DIRECTION, SO THEY SORT OF MOVE TOGETHER," ANNIE EXPLAINS.

BELOW: THE RICH WOOD TONE OF THE UPPER SHELVING FEEDS INTO THE MID CENTURY MODERN DESIGN AESTHETIC. ANNIE DESCRIBES HOW THE SLATS MIRROR OTHER PARTS OF THE KITCHEN. "THE RIBBED PATTERN IN THE TILE MATCHES THE SLATTED DETAIL IN THE CABINETS," SHE POINTS OUT.



Instead of downsizing or purchasing a new home, they decided to bring in the talents of Forge & Bow Dwellings to do a complete renovation, including the kitchen. Forge & Bow is a forward-thinking, boutique home-remodeling and custom home-building firm based in Fort Collins.

Annie Obermann, principal for Forge & Bow, describes how this renovation project began: "The couple were very invested in the area and truly had a tucked-away gem, so when it came time to evaluate their empty-nest home, it was an easy decision for them to renovate," she says.

MAKING SPACE

The design goals for the kitchen included functionality and an increased footprint. "The clients have a really healthy lifestyle, so they cook from home a lot. We needed to focus

on function first," Annie explains. She says the previous layout had painted cabinets, black and white tile flooring and very little kitchen workspace. "The food storage was limited to the existing cabinets, counterspace was covered with appliances and daily-use items, and a functional utility flow was lacking," she says.

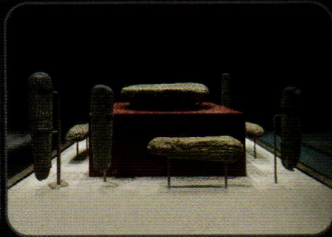
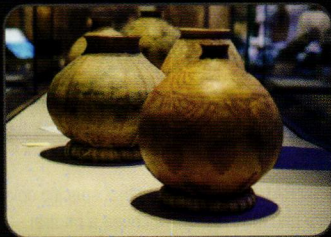
A large island made of quartz was designed to increase the functionality of the space. "It was important for the couple to be able to prepare food at the same time and converse with guests," she says. This feature has quickly become a favorite for the homeowners.

The kitchen was very cramped and two walls divided the kitchen from the entry and living spaces. A more open concept was achieved by knocking down these walls. The ceilings were vaulted to expand the spacious look and feel.

Visit

AGUA CALIENTE CULTURAL MUSEUM
PALM SPRINGS, CALIFORNIA

LOCATED AT THE AGUA CALIENTE CULTURAL PLAZA
- WORLD'S GREATEST PLACES 2024 -
by TIME



140 N. Indian Canyon Drive • Palm Springs, CA 92262

accmuseum.org





ABOVE, LEFT: IN ORDER TO BRING NATURAL LIGHT TO THE SPACE, WINDOWS WERE ADDED TO FLANK THE STOVE. "THE BACK RANGE WALL WAS A FOCUS, AND THE WINDOWS BROUGHT IN LIGHT AND ADDED SYMMETRY TO THE SPACE," ANNIE EXPLAINS. DOORS TO THE LEFT AND RIGHT OF THE KITCHEN WERE ALSO ADDED TO AFFORD BETTER ACCESS TO THE BACKYARD.

ABOVE, RIGHT: THE TOP OF THE ISLAND IS CAMBRIA QUARTZ, WHICH ADDS A LIGHTNESS TO BALANCE THE VARIOUS WOOD STAINS AND SATURATED COLORS FOUND THROUGHOUT THE KITCHEN. "IT'S A GREAT SPOT FOR A LITTLE IMPACT," ANNIE SAYS.

MID MOD REDO

"Our clients kept true to mid-century architecture," Annie says. "The final design is traditional to this period." The design team used various tones of wood throughout the space to achieve the mid mod look. The alder wood-wrapped oven hood and the slatted siding door fronts on the cabinetry bring a rich wood texture to the space.

Green cabinets and brown stone tile from Savoy Classic Field Tile support the MCM aesthetic as well. The tile adds a beautiful and interesting texture to the backsplash area. The floors are white oak and they bring in a lightness that balances the other wood tones and saturated colors. The space is warm and cohesive, and the homeowners now have a welcoming, functional kitchen for this new season of life. 🌿

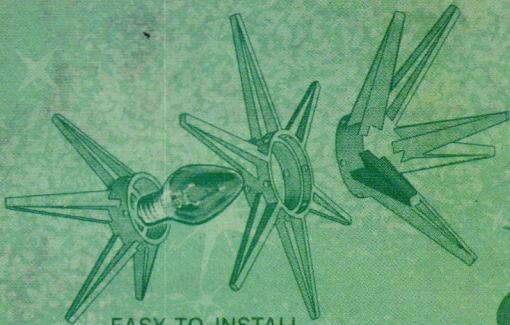
SEE RESOURCES, PAGE 88

/MAKE IT LOOK MOD/

Here are some tips from interior designer Annie Obermann of Forge & Bow for achieving an MCM ambience in your kitchen.

- **USE A MIX OF WOOD TONES THROUGHOUT YOUR SPACE.** White oak, alder and various shades of brown wood stains will bring that quintessential mid-century warmth.
- **KEEP THE COLOR PALETTE NEUTRAL.** Annie explains that specific color choices can help you stay true to the mid mod look. "We chose a neutral palette of earthy tones and multiple shades of brown stains," she says. This includes earthy greens and lighter creams for color contrast.
- **STYLE IT SLEEK.** Mid-century design is well known for its sleek lines. Slatted siding front doors on cabinetry are an easy way to achieve the period's aesthetic.
- **TACK UP SOME TILES.** Using brown tiles adds texture and warmth and is keeping with the mid mod vibe. Use tiles as a backsplash or on the walls behind cabinets.

New! LIGHT BULB ACCESSORIES FROM **TRU-TONE**



EASY-TO-INSTALL
3 PIECE SNAP-TOGETHER
CONSTRUCTION

Star Lites

Sprinkled with Stardust!

SPUTNIK LIGHT COVERS FOR TRU-TONE C7 SIZE BULBS

FOR TREES, ATOMIC LIGHT FIXTURES AND MORE!
THEY'RE OUT OF THIS WORLD!



FACETED LIGHT REFLECTORS



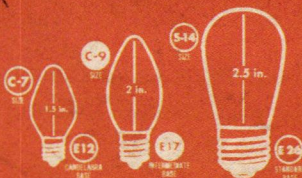
SOLD IN A SET OF
10 REFLECTORS
5 OF EACH STYLE



Safe & Modern
PLASTIC

EASY-TO-INSTALL

ONE-PIECE
CONSTRUCTION



VINTAGE
COLOR



BRIGHT,
WARM GLOW

VISIT **TRU-TONE.COM**

atomickitchens



ABOVE: "THIS HOME IS A CLASSIC MID CENTURY MODERN POST-AND-BEAM CONSTRUCTION WITH MANY FLOOR-TO-CEILING WINDOWS AND SLIDING DOORS, BUT IT HAD BEEN RENOVATED IN PREVIOUS YEARS," SAYS KAREN NEPACENA, PRINCIPAL DESIGNER AT DESTINATION EICHLER. SHE BRIGHTENED THE KITCHEN WITH HUNTER DOUGLAS DUETTE CELLULAR WINDOW SHADES AND A JULIEN SINK AND WATERSTONE FAUCET.

OPPOSITE PAGE: THE LINES OF THE COUNTERS AND CEILING STRETCH TOWARD THE BACK WALL AND GARAGE DOOR, CONTRASTED WITH THE HANGING ORIGINAL GLOBE LIGHT FIXTURES.



Function & Flow

Efficiency was emphasized in upgrading this classic California Eichler.

By Dana Mauer | Photography by John Shum

NESTLED IN WALNUT CREEK, CALIFORNIA, a classic 1955 Eichler was in need of upgrades to brighten and honor the original design. Homeowners Dianne and Tyler Ott arranged a collaboration between Karen Nepacena, principal designer at Destination Eichler, and Erin Eyerly, architect at Eyerly Architecture. The kitchen, dining room, breakfast nook and the family/media and living room areas took roughly four months of construction in addition to months of design and project planning.

"After the homeowners addressed typical projects required in an older home, like replacing siding and upgrading electrical panels, they decided they were ready to invest in other areas of the home, starting with the kitchen and shared living spaces," Karen says.

MID-CENTURY EMPHASIS

The classic Eichler with Mid Century Modern bones had been renovated with materials not in line with Mid Century Modern style. When considering ways to work the MCM style back into the home, there are several options. "One is with the color palette, whether it's pale pink or yellow to more bold colors such as orange," Karen says. "Choice of material was key in this project where we installed traditional mid-century era SVT (Solid Vinyl Tile) flooring to replace carpet and tile that had been installed previously. The SVT is very durable, period-specific, and in this case, came in a color palette that was fun and unique." Using the SVT flooring as inspiration, laminates for the kitchen cabinetry were chosen in very specific colors from a handful of laminate manufacturers to match the flecks in the flooring.



THE WAVY LINES OF THE WEST ELM ARTWORK AND BOLA FELT PENDANT LIGHT FROM PABLO LIGHTING ADD WARMTH AND COMPLEMENT THE STRAIGHT LINES THROUGHOUT THE REST OF THE ROOM. "THE NATURAL-COLORED SLATS ALLOW FOR A MORE FORMAL DIVISION BETWEEN THE SHARED OPEN SPACES, YET THE PARTITION BETWEEN ROOMS IS NOT TOO SEVERE," KAREN SAYS.

FUNCTION FIRST

"For the kitchen, we were tasked with creating a more functional prep space and cooking area, updating it with modern amenities (such as a built-in espresso machine) while still keeping the Eichler spirit," Karen explains.

Diving into the design, architect Erin Eyerly knew the refrigerator had to move to the exterior wall of the kitchen to improve the kitchen's working areas. "We also capitalized on an existing shallow pantry space that already extended into the garage a little, but made it push into the kitchen an additional nine inches or so to allow that piece to house a built-in espresso machine and speed oven," Erin says. "So much function and storage was packed into that wall, without any negative effect on the interior's flow."

RANGE INSPIRATION

"From the early days of the project, the homeowners already knew they wanted a new orange Bertazzoni range, so we as a design team were excited to create a cohesive design around this centerpiece appliance," Karen says. Delivery of the cylindrical hood range nearly delayed completion of the project, but it was worth the wait. "A more traditional hood shape would have felt out of place and sometimes it's

the things that you barely notice that make a difference in a project," Erin says. "We really loved how the shape and lightness of this element was designed to complement the hanging upper cabinet next to the range, so I'm glad we were able to complete the project with this hood," she explains.

AMPLE SEATING

"The family enjoys hosting and having guests over to swim in their pool, so the new design plan included an open dining area centrally located for easy flow in and out of the home," Karen says. A built-in banquette provides another spot for the young family to eat or hang out.

"In addition to counter seating at the peninsula, we also aimed to maximize a small breakfast nook space that now doubles as storage and a bar/serving area," Karen explains. Homeowners Diane and Tyler especially love the addition of the sliding cabinets in the breakfast nook. "We were losing storage space, so they were absolutely necessary, but we worried that the space wouldn't be very usable and feel cramped," Diane says. "The nook is now more functional with the new table arrangement and it's the perfect spot for our kids to eat with friends, do art projects or for us to take a few Zoom calls."

BALANCE / THE BOLD

The design team's advice for working vivid colors into your styles.

- **FIND INSPIRATION FROM ART.** Look for colors in your favorite art pieces to emphasize. "The homeowners really helped drive the final selection of color palette and already owned several unique art pieces that reflected their love for vibrancy and fun," Karen says. The blocks of colors add visual interest and create a playful pattern of color.
- **USE NATURAL MATERIALS.** Light tones and smooth or even textures leave room for bold choices without creating visual distractions. "The use of natural wood (oak) and white cabinetry helped to balance the overall visual design of the space," Karen says. Alternating where the color was applied balanced the neutral white and light-colored oak areas.
- **WORK WITH SUNLIGHT.** Beyond the color choices, consider what the materials and finishes will look like when the sunlight hits them. "You want each color to have its moment but not have too many colors competing for attention," Karen says. The neutral concrete-like countertops and natural-colored backsplash glaze provide a lightness to the space so that the pops of color in the space can shine without being overwhelming.

TOP, RIGHT: "THE COLOR PALETTE IN THE KITCHEN ORIGINATED FROM THE CLIENTS' LOVE OF COLOR," KAREN SAYS. LAMINATES IN PLAYFUL COLORS STAND OUT AGAINST THE SOFT WHITES. **MIDDLE, RIGHT:** "LAMINATE AND NATURAL WOOD WERE USED ON CUSTOM CABINETS," KAREN SAYS. THE LAMINATE WAS SPECIFICALLY CHOSEN FOR ITS DURABILITY AS WELL AS MID CENTURY MODERN ROOTS. CAESARSTONE FROZEN TERRA ENGINEERED QUARTZ SURFACES EXTEND THE COUNTER LINES. **BOTTOM, RIGHT:** THE FLOATING KITCHEN CABINETS ARE MULTIFUNCTIONAL. "THERE'S STORAGE ON BOTH SIDES AND THANKS TO THE THIN MOUNTING RODS AN AIRYNESS CAN STILL EXIST BETWEEN THE SPACES WHILE NOT LOSING OUT ON PRECIOUS STORAGE AREA," KAREN SAYS. CABINETRY BY DANIEL AWAND INCLUDES THE CUSTOM NICHE AND INTEGRATED COLORED LAMINATE SHELVING FOR A SEAMLESS LOOK.

DIVIDED SPACES

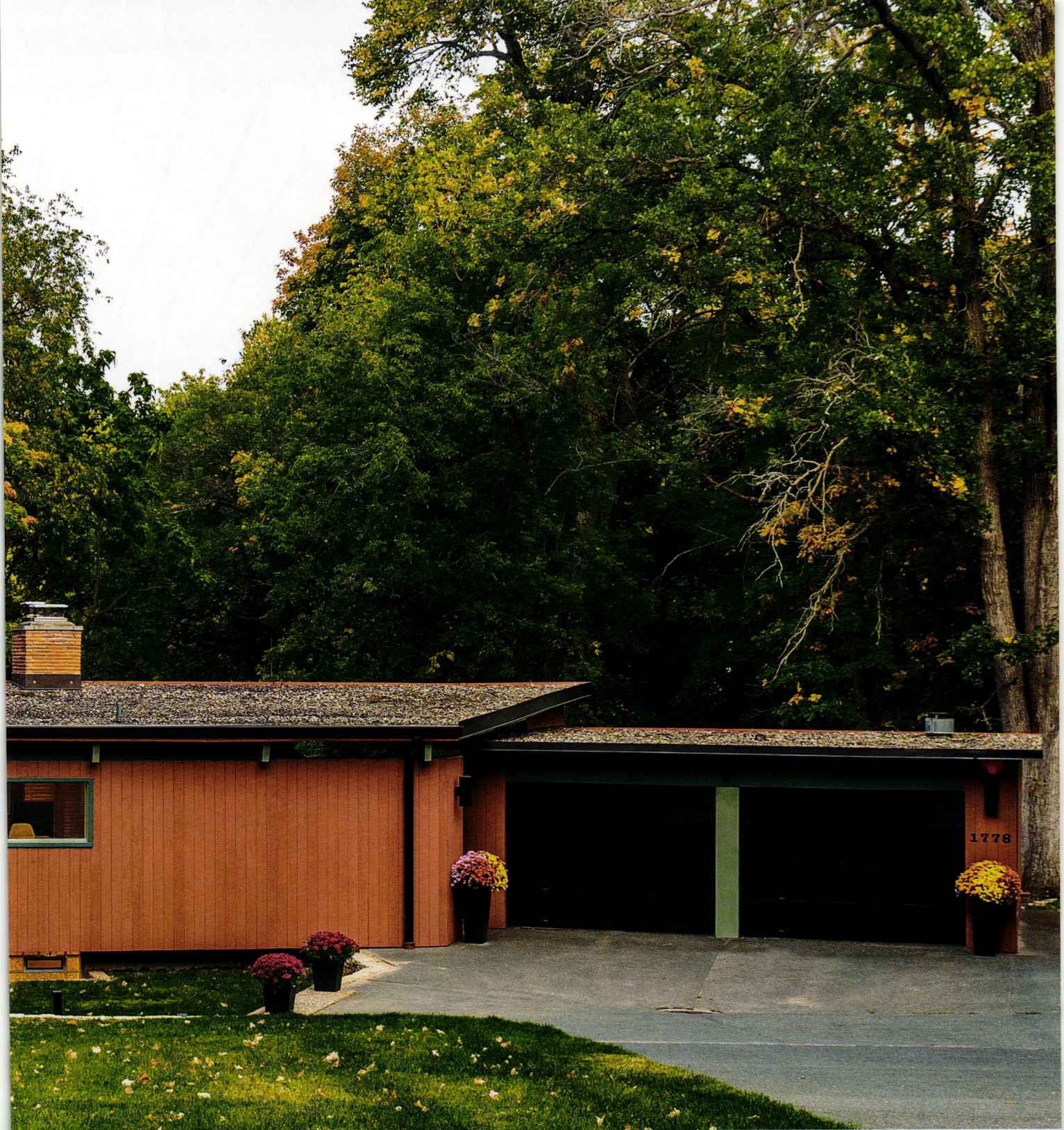
One of the features of this Eichler floor plan is the separate room off the dining room, typically used as a multipurpose room or, in today's world, a TV/media room. "We resized the opening between the dining space and the multipurpose space, using a custom designed slat wall divider as both a partition and for visual interest," Karen says. The slats created a formal division between the shared open spaces, yet the partition between rooms is not severe. "It allows light and visibility between the spaces, and also gives the homeowners a backdrop to place a full-size dining table where it used to feel like there wasn't a proper place for one before," Karen says. ☒

SEE RESOURCES, PAGE 88





An MCM **Time Capsule**

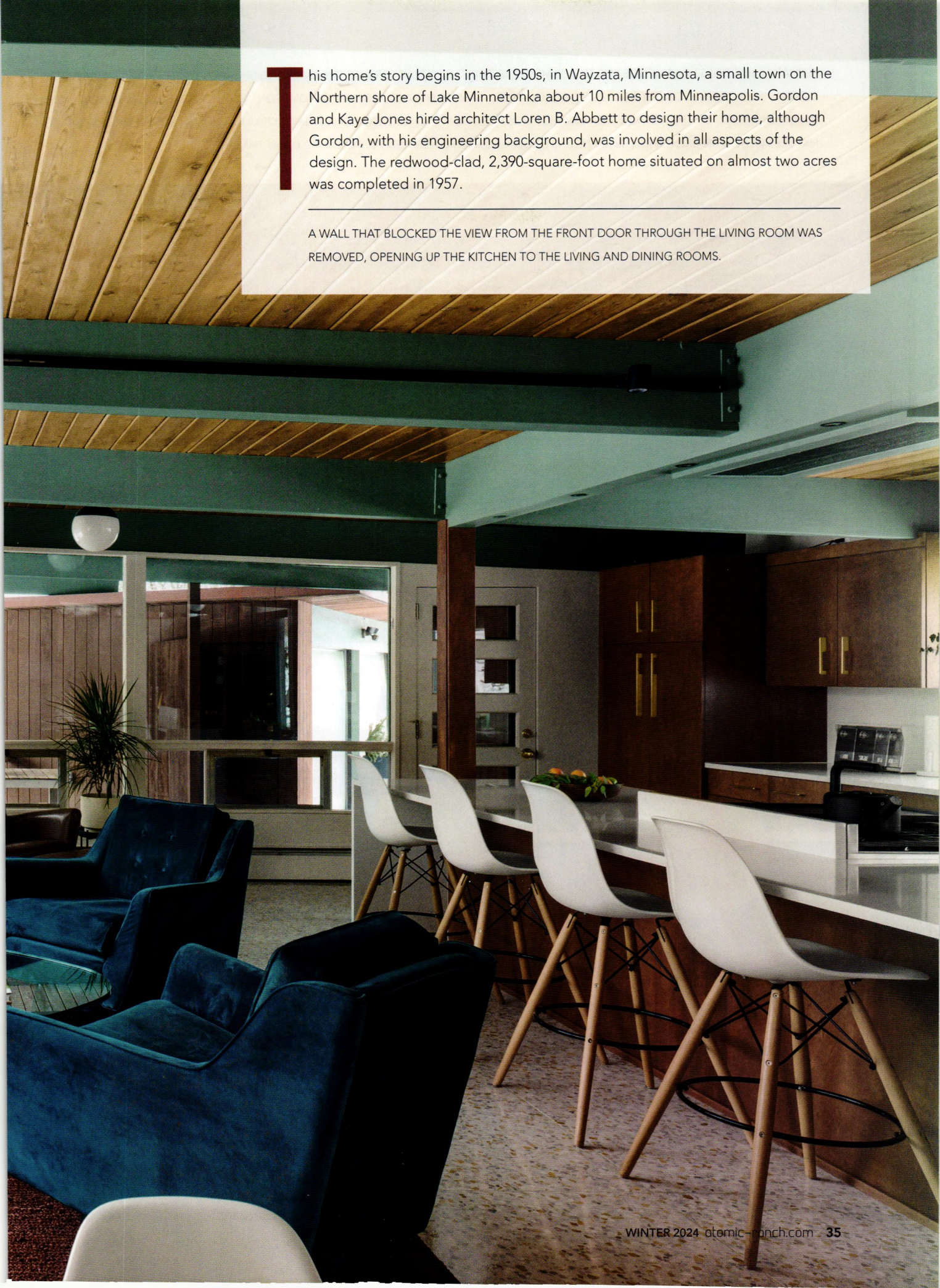


A custom-built 1957 mid-century home is updated for today's modern lifestyle.

By **Patricia Kline** | Photography by **Spacecrafting** Interior design by **Ashley Bull, Novella Design House**
Contractor/Construction by **Dorian Thompson, Thompson Construction LLC**

TYPICAL OF MID CENTURY MODERN HOMES, THE FRONT OF THE HOME IS UNASSUMING AND FEATURES FEW WINDOWS. THE HOME HAS A FLAT ROOF, POST-AND-BEAM CONSTRUCTION AND AN ATTACHED GARAGE WITH A LOWER-LEVEL WORKSHOP. THE HOMEOWNERS CLEANED UP A DECADE OF NEGLECTED LANDSCAPING. JEFF PAINSTAKINGLY RESTORED THE 1987 PORSCHE 911 TARGA.





This home's story begins in the 1950s, in Wayzata, Minnesota, a small town on the Northern shore of Lake Minnetonka about 10 miles from Minneapolis. Gordon and Kaye Jones hired architect Loren B. Abbett to design their home, although Gordon, with his engineering background, was involved in all aspects of the design. The redwood-clad, 2,390-square-foot home situated on almost two acres was completed in 1957.

A WALL THAT BLOCKED THE VIEW FROM THE FRONT DOOR THROUGH THE LIVING ROOM WAS REMOVED, OPENING UP THE KITCHEN TO THE LIVING AND DINING ROOMS.

PERHAPS THE BIGGEST CHALLENGE FOR THE HOMEOWNERS AND CONTRACTOR WAS THE EXTENSIVE UPGRADE TO THE HOME'S ELECTRICAL SYSTEM. "EVERY SINGLE CIRCUIT NEEDED TO BE REPLACED," SAYS CONTRACTOR DORIAN THOMPSON. "THE HOUSE HAD LOW-VOLTAGE WIRING, WHICH WAS STATE-OF-THE-ART FOR THE 1950S, BUT MOST OF THE SWITCHES WERE NO LONGER WORKING AND WALL RECEPTACLES AND LIGHT FIXTURES WERE NON-EXISTENT." THEY RAN NEW UNDERGROUND POWER AND INSTALLED A 200-AMP PANEL.





ABOVE: THE HOME FEATURES AN ORIGINAL INVERTED FLOATING TRIANGULAR STAIRCASE LOCATED JUST INSIDE THE MAIN ENTRY. THE STAIRS WERE RESTORED AND CARPETED. NOTE THE PROTECTIVE TRIANGLE OF TEMPERED GLASS THAT WAS ADDED TO CLOSE OFF THE SPACE LEADING TO THE GARDEN LEVEL AND BASEMENT.

Gordon and Kaye didn't have children, so when Kaye passed away in 2019, six years after Gordon, it fell to their niece, Sherry Holtmeyer, to sell their home. "The house had been a real labor of love for Gordon and Kaye," Sherry says. "It was their mark on the world. I felt like if it was torn down, they would have been erased. I wanted to meet all interested buyers to give the house a fighting chance."

In the hope of finding a buyer who would appreciate the mid-century design of the home and not tear it down, Sherry listed the home for sale by owner instead of relying on a real estate agent.

THE PLOT THICKENS

In 2020, the home's listing in a local Facebook group dedicated to mid-century design caught the eye of Ashley Bull. Ashley and her husband, Jeff, had been looking diligently for almost two years for a Mid Century Modern home to call their own.



"We had moved from a downtown loft in Minneapolis to a home in the suburbs when our first child began walking. We learned a lot during the renovation process of that home," Ashley says. "In 2018, we took advantage of a good real estate market and sold the home. Then the search was on for a Mid Century Modern home." The couple and their now two children didn't realize how long the process would take—and it was further hindered by the worldwide pandemic.

"We didn't sit back and wait for the right house to hit the market; we identified the mid-century neighborhoods and got to work. We walked the neighborhoods, talked to residents, wrote letters, toured lots of houses and set Google alerts for listings that fit our wish list," Ashley explains.

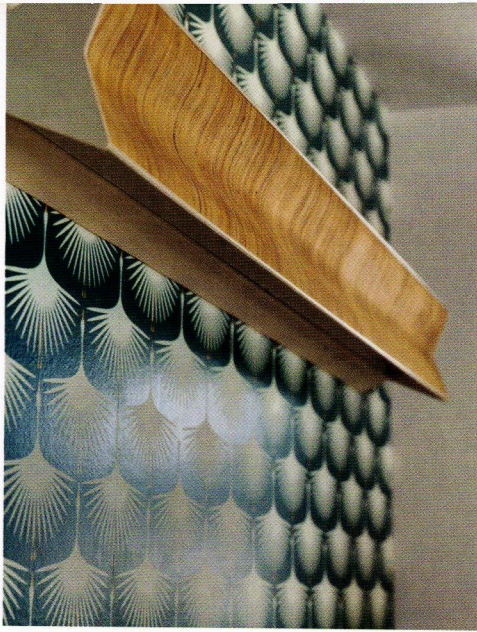
Ashley and Jeff showed up to the open house in Wayzata with Dorian Thompson, the contractor who had renovated their first home.

ABOVE: THE HOMEOWNERS HAD A WALL REMOVED IN THE BASEMENT TO CREATE A LARGE FAMILY ROOM. THE WOOD-BURNING STOVE IS ORIGINAL TO THE HOME.

OPPOSITE, TOP: THE HOMEOWNERS ORIGINALLY THOUGHT THEY WOULD RESTORE THE EXISTING KITCHEN CABINETS, BUT THE CABINETS WERE ODD SIZES AND THE VENEERS WERE PEELING OFF. THEY OPTED TO INCREASE THE SIZE AND FUNCTIONALITY OF THE KITCHEN, BUT IN A NOD TO THE ORIGINAL KITCHEN THEY HAD CUSTOM BIRCH CABINETS MADE TO MATCH THE ORIGINAL CABINETS. ANOTHER PERIOD TOUCH IS THE CUSTOM FLOORING. THE HOMEOWNERS INSTALLED CUSTOM TERRAZZO CONCRETE TILES, WHICH WERE ALSO POPULAR IN THE 1950S.

OPPOSITE, BOTTOM: THE OPEN OFFICE IS LOCATED AT THE TOP OF A SHORT FLIGHT OF STAIRS AND SITUATED NEAR THE PRIMARY BEDROOM. THE HOMEOWNERS ORIGINALLY THOUGHT THEY MIGHT CLOSE IN THE OFFICE TO GIVE THEM A QUIET WORKING SPACE BUT QUICKLY REALIZED ADDING A WALL DIDN'T WORK WITH THE AIRY FEELING OF THE HOME.





A NEW CHAPTER BEGINS

"I knew as soon as I saw the house that it was the one," Ashley recalls. "The home was an absolute time capsule. I spent most of my time during the showing speaking with Sherry about our passion for mid-century design as well as our experience and knowledge with renovations. We assured her we wouldn't tear the house down."

It was time well spent. Despite receiving numerous competitive offers, Sherry accepted Ashley and Jeff's offer in July 2020. Construction began in August. The homeowners were fortunate that Sherry still had the original blueprints for the home and they were used as a reference throughout the renovation.

The family moved into the not-quite-finished home in December 2020. "At that point, we had been searching for two years and had moved three times in six months, including a stay in an Airbnb. We were ready to move in despite the home not being completely finished," Ashley says.

A SHORT SET OF STAIRS LEADS TO THE PRIMARY BEDROOM WITH CUSTOM BUILT-INS, INCLUDING THE VANITY AREA AND STORAGE HEADBOARD. THIS ROOM REQUIRED MINIMAL UPDATING. THE HOMEOWNERS INSTALLED NEW CARPET AND A WALLPAPER ACCENT WALL AS WELL AS NEW LIGHTING.





THIS PINK AND BLACK BATHROOM REQUIRED EXTENSIVE RENOVATION DUE TO THE LARGE AMOUNT OF ROT AROUND THE SHOWER. THE HOMEOWNERS RESTORED THE ORIGINAL BUILT-IN CABINETS AND ADDED A SECOND SINK. THEY INSTALLED A TERRAZZO COUNTERTOP ECHOING THE TERRAZZO FLOOR ON THE MAIN LEVEL. THE SAME TERRAZZO PATTERN WAS ALSO USED IN THE SHOWER FOR SHELVES AND THE SHOWER THRESHOLD. THEY WEREN'T ABLE TO SAVE THE ORIGINAL BLACK FLOOR TILE SO REPLACED IT WITH A SIMILAR STYLE.



THE PATH TO FINDING **YOUR DREAM HOME**

Ashley and Jeff dedicated almost two years to finding the right MCM home for their family. Here are Ashley's suggestions for finding yours.

- **The right house is worth the wait.** Choose a house that you love so you can focus on restoring rather than making the house into something it isn't: Don't buy a Craftsman home if what you really want is a modern one.
- **Don't wait for the right house to hit the market.** Get to know the mid-century neighborhoods and keep track of the homes that have the key features that you like. In our case, we wanted a home with a flat roof.
- **Get out of your car.** Talk to the neighbors. They often know when people are going through a life event that might prompt them to sell their home.
- **Write letters.** We wrote dozens of letters to the owners of the homes we were interested in. These letters were extremely complimentary of the home and not just please sell us your home! Even if the homeowner didn't want to sell they often responded by sharing the story of their home.
- **Go to open houses.** This will help you know the price range homes are selling for so when you are ready you can make a competitive offer.
- **Join online groups, such as a Facebook group dedicated to mid-century design.** Real estate agents and homeowners will often post homes for sale in these groups. This was ultimately how we found our home.
- **Create a Google Alert.** You will be notified when there is news matching your search criteria.



A SIGNATURE OF MCM DESIGN IS BLURRING THE BOUNDARY BETWEEN THE INDOORS AND OUTDOORS. HERE, THE VERTICAL REDWOOD SIDING, BRICK FIREPLACE AND TONGUE-AND-GROOVE CEDAR CEILINGS EXTEND BEYOND THE INTERIOR OF THE HOME. THE TEAL TRIM COLORS ARE CUSTOM MATCHES TO THE ORIGINAL TRIM COLORS.

The home, which was originally a one bedroom, is now a three-bedroom, two-bath home. As satisfied as the homeowners are with their updated home, there are some big-budget improvements that still need to be made. "Next on our list is to replace the boiler and the roof, and install new landscaping," Ashley says. "A more exciting project we are considering is restoring the Par Three golf course Gordon installed in the backyard."

Sherry is pleased with the renovations as well. "They maintained the integrity of the home, but it now fits today's lifestyle," she says.

Ashley is beginning a new chapter in her career as well. She has started an interior design business, Novella Design House. "I chose the name Novella Design House because I think each house has a story to tell," she explains. "I want to take what I have learned and help other people find the perfect home for them and make it their own." 🌿

SEE RESOURCES, PAGE 88



Stewards of the *Past*

This 1957 gem in Denver, Colorado, has only changed hands twice and is almost entirely original.

By **Victoria Van Vlear** | Photography by **Atom Stevens**

THE HOME HAS AN INVERTED BUTTERFLY ROOFLINE, LOW-PITCHED AND OFFSET, WITH WIDE BOARD AND BATTEN SIDING ON BOTH ENDS. "IT'S CEMENT BOARD WITH CUSTOM STILES," SAYS HOMEOWNER JAMES COOPER. "THAT'S REPEATED ON THE GARAGE DOORS TO HIDE THEM SO YOU HAVE ONE CONTINUOUS FACE ON THE FRONT OF THE HOUSE." ONE OF THE UPSIDES OF LIVING IN AN OLD HOUSE IS THE MATURE LANDSCAPING, INCLUDING A PLUM TREE IN FRONT OF THE HOUSE AND AN ELM TREE IN THE BACKYARD. "THEY WERE PLANTED 50 TO 60 YEARS AGO AND GIVE US A LOT OF SHADE AND COLOR AND ANIMAL LIFE," JAMES SAYS.





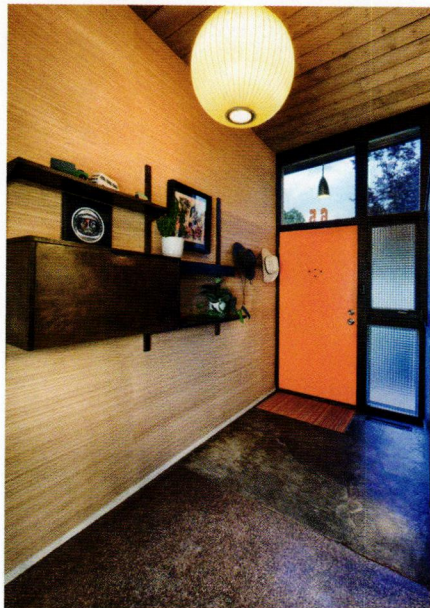


ABOVE: THIS SIDE OF THE LARGE LIVING SPACE BACKS UP AGAINST THE KITCHEN'S PARTIAL WALL. "YOU CAN'T SEE, HEAR OR SMELL THE KITCHEN, BUT IT GIVES YOU THAT BOX YOU CAN USE FOR THE FRIDGE AND CABINETS," JAMES SAYS. THE FIREPLACE IS A LARGE PIECE THAT WORKS WELL WITH THE COLOR PALETTE OF THE HOUSE. "IT HAS AN AMAZING EVIL LAIR FEEL TO IT," JAMES SAYS. THE ART IS BY MID-CENTURY PAINTER CARLO OF HOLLYWOOD, WHO MAY HAVE BEEN A SET DESIGNER ON THE ORIGINAL "STAR TREK" SHOW. THE SOFA IS A VINTAGE PIECE JAMES AND JENN HAVE MOVED WITH THEM THROUGH SEVERAL HOMES.

BELOW, LEFT: THE ENTRYWAY TO THE HOUSE COMES INTO THE MAIN LIVING AREA. BEHIND THE ORIGINAL ORANGE PAINTED DOOR IS A CADO WALL UNIT THE SECOND HOMEOWNER PUT IN, WHICH IS PERIOD ACCURATE TO THE HOME. THE CEILING THROUGHOUT THE HOUSE IS ORIGINAL. "THEY'RE TONGUE AND GROOVE WITH THE ORIGINAL NATURAL STAIN ON THEM," JAMES SAYS. "THEY'VE NEVER BEEN PAINTED."

W

hat would it be like to live in a mid-century home that's almost entirely original? That's the dream the Cooper family gets to live every day. "There's still usually a moment, maybe about once a year, when I'm inside and the fire is going, it's snowing outside and I think, 'I can't believe I get to live in this room,'" says homeowner Jenn Cooper. "It's so beautiful and comfortable."



ARAPAHO HILLS

This mid-century neighborhood in Littleton, Colorado, had a rocky start.

Arapaho Hills was supposed to be the second community developed by the partnership between architect Edward B. Hawkins and contractor Clyde Mannon. They had developed nearby Arapahoe Acres from 1949-1957, and Hawkins had purchased the second piece of property in 1954. "The partners originally envisioned a neighborhood of 360 modern homes covering the entire 160-acre site," according to the Arapaho Hills Historic Preservation Guidelines, which was prepared by the city of Littleton in the mid 2010s. But Hawkins only designed two buildings in the community: the first model house, which the Cooper family now owns, and the sales office/carpentry shop. He then withdrew from the project entirely.

Clyde Mannon was left by himself without an architect—which was especially unfortunate because Hawkins still owned the property. Mannon ended up developing the rest of the community on his own, with help from two other architects: Bruce Sutherland and John Eatwell. According to the Preservation Guidelines, "Mannon Associates incrementally purchased individual lots or groups of lots from Edward Hawkins or a trust established by him." In addition to the single home designed by Hawkins, there were seven other homes not designed by the Mannon Associates team. *Better Homes & Gardens* purchased one lot per year from 1956-1961 as one of their idea homes. There was also a single home designed by the son of the homeowners.

Unfortunately, an economic downturn in the early 1960s slowed the development. According to the Preservation Guidelines, "Mannon decided to abandon work in Arapaho Hills. He began to focus on commercial building and then left construction entirely." Both original partners sold the rest of their lots to other developers who finished the neighborhood in the 1970s.

But despite the upheaval in the building process, the architecture of the neighborhood remains cohesive, largely because Sutherland and Eatwell designed the specs of the homes by taking inspiration from the original model home by Hawkins.



LINED UP IN THIS DISPLAY CABINET IS A COLLECTION OF ASHTRAYS FROM JAMES' GREAT-GRANDPARENTS. "THEY COLLECTED THOSE IN THEIR TRAVELS, PARTICULARLY ON THE WEST COAST," JAMES SAYS. "SAN FRANCISCO, SPOKANE, ETC. THEY EVENTUALLY WENT INTO A BOX AND ALMOST WENT TO GOODWILL, BUT WE GOT THEM." THE BOOKCASE IS A BUILT-IN ORIGINAL TO THE HOUSE AND PROVIDED A GOOD DISPLAY OPPORTUNITY. "IT'S FUN TO LOOK UP AND SEE WHICH OF THOSE PLACES STILL EXIST NOW," JAMES SAYS.



HOUSE HISTORY

The 1,500-square-foot house was constructed in 1957 as the model home for the master-planned community of Arapaho Hills in Littleton, a suburb of Denver. "This was the model and show home, the first home they built," homeowner James Cooper says. The original business partnership for the community was between architect and builder Edward B. Hawkins and contractor Clyde Mannon. But after designing this initial model home, Hawkins pulled out of the project. "This is the only house in the neighborhood built by Hawkins," James says.

While their home is unique even amid the surrounding neighborhood, it still fits into the exclusively mid-century vibe of the area, with

the newer houses taking their cues from the original model home. "The architectural features are borrowed from each other," James says.

But what makes the house stand out 65 years later is not who designed it but who has lived it in. James and Jenn are only the third homeowners. "The Pflueger family were the original owners. They lived here so long that this house was known as 'The Pflueger House' for a long time," James says. The second homeowner, Mitchell Cowley, was another preservationist who wanted to keep the house as intact as possible. "He helped apply for the neighborhood to be part of the National Register of Historic Places," James says.



THE DINING TABLE IN THE COMBINED LIVING/DINING ROOM HAS ITS OWN UNIQUE STORY. "THE TABLE WAS MADE FOR THIS MODEL HOME IN THE CABINETRY SHOP," JAMES SAYS. THERE WAS A COUPLE WHO CAME TO VIEW THE MODEL HOME AND DIDN'T PURCHASE IT, BUT THEY DID PURCHASE THE TABLE. YEARS LATER, SOMEONE CONTACTED THE SECOND HOMEOWNER OF THIS HOUSE, MITCH, AND TOLD HIM THAT HE HAD TO GET THE TABLE. HE HEARD THE STORY AND PURCHASED IT ON THE SPOT. "IT STAYS WITH THE HOUSE NOW," JAMES SAYS.



A RECURRING CHALLENGE IN THE KITCHEN WAS THE LIMITED SPACE BETWEEN THE TOP OF THE COUNTERTOP AND THE BOTTOM OF THE STOVE VENT. "WHEN WE DID THE RENOVATION, WE PUT A DIFFERENT KIND OF VENT IN THERE THAT WOULD BE SUBTLE—YOU CAN BARELY SEE IT," JAMES SAYS. "WE DIDN'T WANT TO CHANGE THE SHAPE [OR POSITION] OF THE CABINETS BECAUSE THE TOP LINE MATCHES THE TOP LINE OF THE WALL." THE COLORS ON THE SLIDING MASONITE CABINET DOORS MATCH THE OLD ONES THE COUPLE HAD TO REPLACE BECAUSE THEY WERE FALLING APART. "BASED ON WHAT I'VE SEEN IN THE NEIGHBORHOOD, I BELIEVE THEY'RE THE ORIGINAL COLORS," JAMES SAYS.

So, by the time James and Jenn bought the house in 2018, it looked almost identical to its original build in 1957. Mitch had even added additional mid-century features, such as lighting and furniture that the Coopers were able to keep when they bought it. "Our house is the most original [in the neighborhood], both interior and exterior, because the people who lived in it forever were the original homeowners," James says. Now, the Coopers get to be the stewards of this piece of mid-century history.





OPPOSITE: THE TV ROOM IS HOME TO A 1959 PHILCO TV JAMES FOUND YEARS AGO AS WELL AS SEVERAL TRAILER ADVERTISEMENT POSTERS FROM HATCH SHOW PRINT IN NASHVILLE. "OLD CONCERT POSTERS IS WHAT THEY REALLY MADE, BUT THEY DID SOME ADVERTISING TOO," JAMES SAYS. "IT'S A REFLECTION OF OUR 1954 SPARTAN TRAILER THAT WE KEEP IN NEW ORLEANS. WHEN WE GOT THEM, IT TOOK US ANOTHER SIX YEARS TO BE ABLE TO AFFORD TO FRAME THEM."

LEFT: THE COVER OF THE OUTDOOR PATIO IS ORIGINAL TO THE HOUSE, BUT THE COOPER FAMILY DECIDED TO ADD A SLATTED WALL TO SEPARATE THE PATIO FROM A LOWER AREA OF THE YARD. "IT'S A TWO-FOOT DROP OFF TO THE OTHER PART OF THE YARD," JAMES SAYS. THEY TOOK CUES FOR THE SLAT WALL FROM OTHER NEARBY HOUSES. "IT ECHOES OTHER FEATURES IN THE NEIGHBORHOOD," JAMES SAYS.

ABOVE: THE CURRENT TV ROOM IS THE ONLY MAJOR DEVIATION FROM EDWARD HAWKINS' ORIGINAL DESIGN. "THE GARAGE AND HOUSE WERE PARTIALLY DETACHED WITH AN ENCLOSED BREEZEWAY," JAMES SAYS. "IT WAS OPEN TO THE BACK OF THE HOUSE." THE ORIGINAL HOMEOWNERS ENCLOSED THE SPACE TO CREATE AN EXTRA ROOM, KEEPING THE SLIDING GLASS DOORS THAT LEAD INTO THE MAIN LIVING ROOM. THOUGH IT'S A LITTLE UNCONVENTIONAL, JAMES AND JENN LOVE IT. "THIS ROOM MAKES THE HOUSE FOR US," JAMES SAYS. "OUR SON CAN HANG OUT WITH HIS FRIENDS IN THERE AND NOT DISRUPT THE REST OF THE HOUSE."



PRESERVATION, NOT RENOVATION

While the Coopers want the house to stay as original as possible, they're still living in a 65-year-old structure, and fixes are always necessary. "One day, the kitchen drain line fell off the wall," James says. "We'd been considering updating because the vent hood had less clearance between the countertop and cabinets, and the vent was old and really didn't pull any air out." In 2020, they hired a local custom cabinet maker to rebuild the kitchen in a copy of the original. "He rebuilt picture-perfect cabinets so when we had them ripped off the wall and replaced you'd never realize it," James says. "We didn't have any original plans to look at, but we wanted to meticulously reproduce the style with the Masonite sliding doors," Jenn says.

It was top priority to the Coopers that everything look exactly the same when the kitchen was finished—excluding the fallen pipe, of course. "Everything original was built on-site at the cabinetry shop," Jenn explains. "We were careful to preserve the architectural integrity." They did take the opportunity to update the appliances but stuck with low-profile choices that would match the style. "We chose a 'plain Jane' refrigerator," James says. Jenn adds, "When we bought it, there was what I call an 'easy-bake oven' because it was so tiny." But even with the updates, the kitchen looks and feels exactly like the original iteration.





ABOVE: THE PRIMARY BEDROOM FEATURES A COLLECTED BROYHILL BRASILIA BEDROOM SET. "WE COLLECTED THAT SET AS PART OF SEVERAL DIFFERENT PURCHASES," JAMES SAYS. THE ROOM ALSO FEATURES AN ICONIC SETH THOMAS STARBURST CLOCK. "IT HAS LOVELY TEAK WOOD SPOKES; IT'S VERY LIGHTWEIGHT," JENN SAYS. **BELOW:** THIS BATHROOM IS ALMOST ENTIRELY ORIGINAL. THE EXCEPTION IS THE TILE WALL IN THE SHOWER. "[THE ORIGINAL TILE] STARTED TO COME OFF THE WALL," JAMES SAYS. "WE WENT TO GREAT EFFORT TO TRACK DOWN SOMETHING SIMILAR." JENN ADDS, "I ACTUALLY SAW THE IDEA IN *ATOMIC RANCH*. SOMEONE HAD GONE TO DAL TILE AND THEY HAVE A NEAT PROGRAM WHERE YOU CAN CUSTOMIZE YOUR PATTERN." THE COUPLE DID THE SAME AND WERE ABLE TO CREATE A TILE PATTERN VERY SIMILAR TO THE ORIGINAL. "WE TRIED TO REFLECT THE ORIGINAL LOOK AND FEEL," JAMES SAYS. THE REST OF THE BATHROOM, INCLUDING THE PINK TUB, FORMICA COUNTERTOP AND MASONITE SLIDING CABINET DOORS, ARE ALL ORIGINAL.

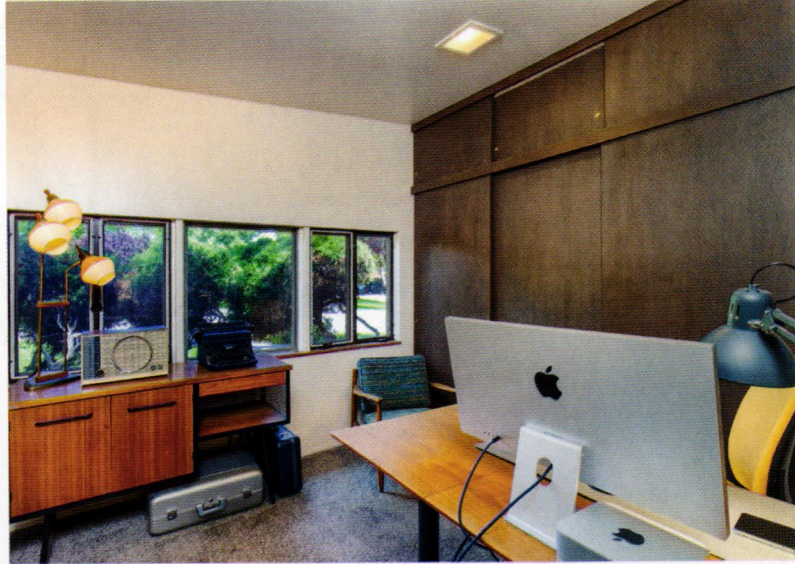


Besides the kitchen, the couple has tried to stay away from making any changes. "There are some systems updates we've done that no one cares about," Jenn says. Those systems can be expensive but are a necessary part of maintaining an old house.

ARCHITECTURAL FEATURES

There were two main architectural features that drew the Coopers to the home: the stone and the layout of the living spaces. Rose rhyolite is a volcanic rock with a matte and dusty finish with a fine-grained texture and is the main material feature that Hawkins used on both the exterior and interior. On the exterior, a slab of it bisects the two halves of the inverse butterfly roofline. Inside, rhyolite lines part of the main living space as well as the fireplace hearth.

The other main architectural draw is the unique layout of the living space, which has both an open and closed concept. "It's a combined living and dining area," James explains. The entryway opens up onto



this large room, which contains the fireplace and backs up to a partial wall that leads into the kitchen. Most of the windows are alongside the back of the house as a privacy feature. "Light comes into the back side of the house so the street doesn't see into the house and we don't hear the street," James says. But it's still very light. "There are clerestory and transom windows that let in a lot of light but it still feels very private," Jenn says. "You can be in the lovely dining area next to the wall with light and on the other side is the gorgeous fireplace."

Three bedrooms and two bathrooms are at the back of the house, so it's this first room that is the home's focal point. "This room is the most sexy part of the home," James says. The couple finds the smaller square footage worth it for the original features and layout. "The house is small and further out [from the city] than we planned to live, but I get all this authenticity," James says. "The three of us are completely comfortable in this space." 🌀

TOP, RIGHT: THE HOME OFFICE LOOKS OUT THE SIDE OF THE HOUSE. THE MID-CENTURY SIDE TABLE IN THE ROOM WAS A PURCHASE FROM THE SECOND HOMEOWNER, WHO LEFT IT WITH THE HOUSE WHEN THE COOPERS PURCHASED IT. A UNIQUE FEATURE OF THIS ROOM IS THE WINDOW SILLS. "THEY'RE MADE OF EARTHEN TILE INSTEAD OF WOOD," JAMES SAYS. "THAT'S A LITTLE BIT OF THAT INDOOR/OUTDOOR FEEL."

ABOVE, RIGHT: THIS SPACE HAS ONE OF THE CADDO WALL UNITS THE PREVIOUS OWNER INSTALLED, WHICH ARE VINTAGE PIECES HARD TO COME BY. "THEY'RE NOT ORIGINAL TO THE HOME, BUT THEY'RE PERIOD CORRECT," JENN SAYS. THE CLOSET IS ORIGINAL TO THE HOME. "THAT LINE TWO-THIRDS UP THE WALL IS WHERE IT DIVIDES FROM A REGULAR HANGING CLOSET ON THE BOTTOM TO THE UPPER CLOSET SPACE FOR STORAGE," JAMES SAYS.

ABOVE, LEFT: IN THE PRIMARY BEDROOM, JAMES AND JENN WORKED FOR SEVERAL YEARS TO COLLECT PIECES FOR A MATCHING FURNITURE SET OF BROYHILL BRASILIA, WHICH INCLUDES TWO DRESSERS, A NIGHTSTAND AND THE HEADBOARD. ABOVE IT SITS A CADDO WALL UNIT, ONE OF SEVERAL IN THE HOUSE.



It Takes a *Township*



A 1970s Acorn Deck House is renovated for a growing family with the help of local MCM enthusiasts.

By **Elise Portale** | Photography by **Lara Kimmerer**

"WHEN WE FIRST BOUGHT THE HOUSE, WE DIDN'T THINK WE WERE GOING TO PAINT IT BLACK," JESSE SAYS. "CONCORD, MASSACHUSETTS, IS A VERY HISTORICAL TOWN. IT HAS A LOT OF AMERICAN REVOLUTION HISTORY, IT'S LIKE A NORMAN ROCKWELL PAINTING. YOU'VE GOT WALDEN POND. YOU HAVE THE LOUISA MAY ALCOTT HOUSE. SO EVEN THOUGH WE HAD A MODERN HOUSE, WE WANTED TO CHOOSE A HISTORICAL COLOR AS A NOD TO THE HISTORY OF THE TOWN." THEY ORIGINALLY WENT WITH A DARK FOREST GREEN THAT ALMOST READ AS BLACK, BUT WHEN THEY SAW HOW THE HOME BLENDED IN WITH ITS LUSH GREEN SURROUNDINGS, THEY DECIDED TO GO FULL BLACK, LETTING THE RED WOOD TRIM POP AS ACCENTS.



BELOW: THE ORIGINAL HEARTH OF THE FIREPLACE WAS A MASSIVE STONE SLAB ON TWO FEET OF BRICK THAT CAME UP TO ANKLE HEIGHT, WHICH WAS A NO-GO FOR A FAMILY OF TWO YOUNG GIRLS AND A THIRD ON THE WAY. SO THEY REMOVED THE STONE AND REPLACED IT WITH REMNANT STONE LAID IN FLUSH WITH THE HARDWOOD FLOORING. (DON'T WORRY ABOUT THE ORIGINAL STONE—IT FOUND NEW LIFE AS A STEP OUTSIDE THE ENTRYWAY!).

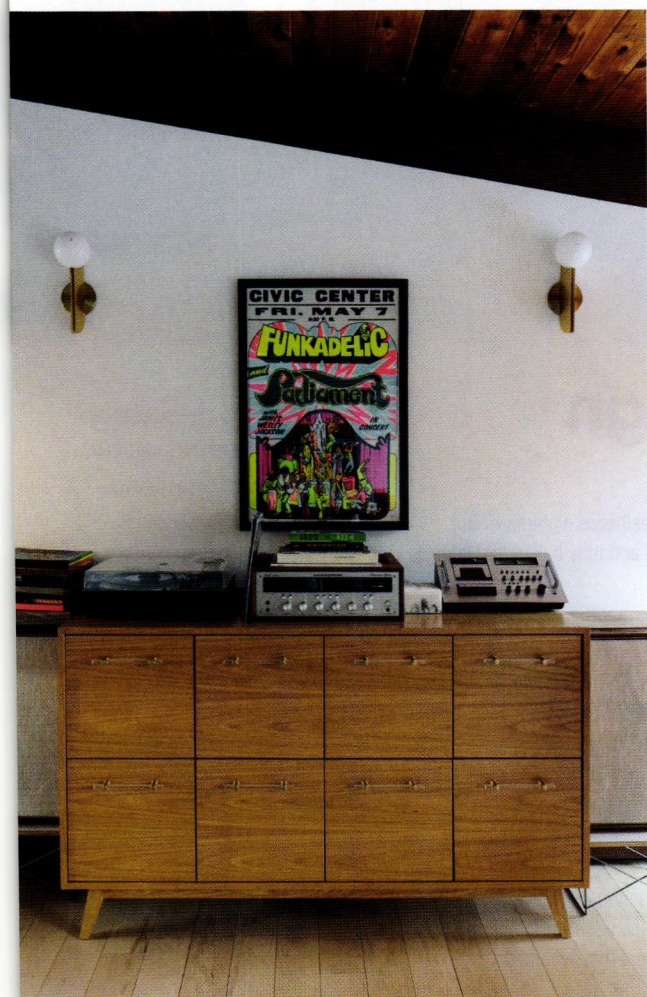
The search for the perfect home is never easy—there are lots of boxes to tick in terms of the house itself, its surroundings and its proximity to other parts of your life. It gets even more complicated when that house also needs to be a Mid Century Modern home fit for raising a family. That was the challenging situation Jesse Lawson and Jason Pino faced while house-hunting in the suburban town of Concord, Massachusetts.

Finding a home within established communities lined with homes designed by mid-century master architects was competitive as well as cost prohibitive. So, the couple trolled Zillow consistently, keeping their eye out for every hidden gem with a peaked roof. And finally they found it: an Acorn Deck House built in 1971, rough and ready for a new generation to spruce it up.

HISTORY IN THE WALLS

The Acorn Deck House Company was born out of the post-war sensibility of being low on waste and efficient with post-war materials. The roots of the company are actually grown from two separate but related businesses. Acorn Structures, which was founded in 1947 by Carl Koch and John Bemis, who aimed





to focus on prefabricated homes. Then, in 1959, two men who worked under Koch—William Berkes and Robert Brownell—decided to split and form their own version of the business called Deckhouse, which focused on MCM-minded design styles that included post-and-beam structures, large windows and tongue-and-groove ceiling decking. The two businesses enjoyed a friendly rivalry for decades and finally merged as one in 1995. In the meantime, though, these prefabricated deckhouses became prolific in the area and remain today an emblem of the area's mid-century history.

Jesse recalls a few of the boxes the Deck House ticked for the couple. "It was on a cul-de-sac, it backed up to conservation land and we could walk to town in 10 minutes. It was pretty ideal to be honest." Well, ideal according to the couple's vision, which required taking the well-loved home down to the subfloor and studs in order to revive many of the original details as well as make it livable for a growing family in the 21st century.

ABOVE: DECK HOUSES ARE KNOWN AS "EAST COAST EICHLERS" IN PART BECAUSE THEY HAVE A VERY SIMILAR VIBE TO THE FAMED SOUTHERN CALIFORNIA ARCHITECT'S HOMES. IN KEEPING WITH THAT CALIFORNIA SCANDINAVIAN FEELING, JESSE AND JASON SKEWED LIGHT AND BRIGHT WITH THE WALL COLOR AND THE FLOORING, A WHITEWASHED NATURAL MAPLE.

LEFT: WHY WERE JESSE AND JASON SO SHY ABOUT COLOR? IT ALL COMES DOWN TO DÉCOR. "THE ROOF BEING CEDAR, IT HAD A DARK HUE, AND THEN THE WINDOWS BEING MAHOGANY, THERE WAS A LITTLE BIT OF REDNESS TO THOSE," JASON SAYS. "WE REALLY DIDN'T WANT TO TRY AND BALANCE COLOR WITH THOSE BECAUSE IT WAS VERY LIMITING. WHITE ALLOWED US TO BRING A LOT OF LIGHT INTO THE SPACE AND THEN HAVE POPS OF COLOR THROUGH ACCESSORIES AND ART AND OTHER THINGS LIKE THAT."



The ABCs of Good Design

Making a mid mod family friendly.

The thought of traditional child-proofing in a Mid Century Modern home sounds like an aesthetics nightmare. But Jesse and Jason wanted a house that was as beautiful as it was safe for their three girls, and they baked that into the very design of the house.

Despite its low impact on the look of the house, the cable railing the couple used to accident-proof the dangerous railings and screens of the Deck House is actually one of the couple's more inelegant solutions. First, there is the downstairs flooring: "We put in cork floor because it's soft and we knew we wanted, on the kids' level, all the flooring to be pretty soft since it's on top of the slab," Jesse explains, adding that cork is also hypoallergenic.

Next came the two hearths. On the upper level, they replaced the original raised hearth with remnant stone dropped flush into the floor, however that was not an option downstairs. "Rather than having a little lick of stone come up that the kids inevitably would trip on and stub their toe, we had them build a mahogany surround that was sort of angled," Jesse says. "When you got to the hearth, it was just an angled little piece of wood that brought it up."

The final design choice was less for their daughters' benefit and more for their own. "In our first condo, we had that glass door on a track on the edge of the tub. And I hated it, because when you were leaning over to bathe your kids, your elbows, your forearms were digging into the track," Jesse says. "I didn't want that. I wanted something that gave me easy access to bathe them when they were little."

ADJACENT TO THE SCREENED PORCH, THE DINING AREA HAS BEEN OPENED UP, MAKING IT NICE AND BREATHABLE. YET, DESPITE THE CHANGES AROUND IT, THE MILO BAUGHMAN DINING TABLE, WHICH THEY BOUGHT FROM THE PREVIOUS OWNER, HAS ENJOYED THAT SPOT FOR MUCH LONGER THAN THE PINO FAMILY. "IT DID REALLY FIT SO PERFECTLY FOR THAT SPACE AND REALLY WORKED FOR THE HOUSE," JESSE SAYS.



TOP: "OUR FIRM BELIEF IS THAT THE KITCHEN IS THE HEART OF THE HOME," JESSE SAYS. "WHEN PEOPLE COME OVER, ALL THEY WANT TO DO IS STAND IN YOUR KITCHEN. DESPITE ALL THE COZY SPACES ELSEWHERE, EVERYONE JUST HANGS OUT IN THE KITCHEN, SO WE WANTED TO MAKE IT A KITCHEN THAT YOU FELT LIKE YOU COULD DO THAT." **ABOVE:** INSTEAD OF COLOR, THE COUPLE WENT WITH A BLACK AND WHITE KITCHEN, LETTING THE TWO TONES OF QUARTZITE—MONT BLANC FOR THE PERIPHERY, BELVEDERE FOR THE ISLAND—STAND OUT AS THE STARS OF THE SHOW. HOWEVER, THEY DIDN'T WANT ANYTHING TO BE TOO SHINY, SO THE COUPLE OPTED FOR HONED AND LEATHERED FINISHES TO KEEP THEM VELVETY AND MATTE.



ABOVE: ON THE FIRST FLOOR, THE MUSIC ROOM IS A NICE CENTERPIECE FOR THIS FIVE-PERSON FAMILY BAND. DUE TO THE CONSTRAINTS OF THE TONGUE-AND-GROOVE SUBFLOOR, THE HOMEOWNERS NEEDED TO GET CREATIVE WITH NEW PLUMBING AND ELECTRICAL, INCLUDING BUILDING OUT MAHOGANY BOXES TO HIDE UNSIGHTLY PIPES AND TUBES. THE UNIQUE SHAPE OF THIS PARTICULAR ONE ADDS A BIT OF UNINTENTIONAL BUT WELCOME DESIGN FEATURE FLAIR. **BELOW:** THE PLAYROOM IS ONE OF THE KEY SPACES FOR JESSE AND JASON'S DAUGHTERS, AND ITS SIZE ALLOWS IT TO BE CONFIGURED IN ANY NUMBER OF WAYS. IN THE SUMMERTIME, THEY CAN DO ANY NUMBER OF CRAFTS AND ENJOY BEAUTIFUL VIEWS OF THE OUTDOORS. IN THE HARSH NEW ENGLAND WINTERS, THEY HAVE ENOUGH ROOM TO RIDE THEIR WHEELY TOYS.



"It was really tired when we bought the house," Jason says. "It just was very dingy and dated with really gross shag carpets and a lot of details had been stripped." The original waffle front door, which had disappeared sometime in the home's life, reappeared while Jason rummaged through the home's garage prior to closing. "We were able to salvage the original door to the house. That was really exciting for us because if you try and buy one they're incredibly expensive given the amount of labor that goes into building them. And this one was very perfect for the house, it just popped right on. It was pretty special."

In fact, that wasn't the only connection to the previous owners Jesse and Jason kept. There was also the kitchen dining table, a steel-and-glass Milo Baughman piece that suited the space too perfectly to change. And then there was the legacy of the seller's own mother, whose art covered every inch of available wall space throughout the home. "She actually had these two pieces of pottery that she had worked on," Jesse says. "We did buy those from him so we could have a little piece of her in the house because her art is sort of what drew us to the house looking on Zillow. We were like, 'Wow, look at that!' It was so colorful."

BACK TO THE SOURCE

When it came to getting down to renovations, the project was not as easy (or within budget) as the couple and their architect Maryann Thompson had hoped. Edits to the original plumbing and electrical were complicated by the fact that the home's subfloor was all tongue-and-groove, meaning that rooms had to be planned to accommodate pipes and wires running through the walls. In a few places, namely the kitchen and the music room, they built out mahogany boxes on the ceiling to hide electrical and plumbing, which they were careful to match to the aesthetic of the house. "In the music room, they built out this really crazy box to cover all the plumbing," says Jesse of the angular soffit-esque wooden box floating above a drum kit and several small guitars. "But it almost ended up looking like a design feature." Solutions like this were integral to adding a half bath and expanding the main bath into a true primary suite—changes that were essential for a home used for hosting friends and family during the holidays.



EARLY ON IN THE PLANNING STAGE, THE COUPLE CONSIDERED DOING SAGE-GREEN CABINETRY IN THE KITCHEN, AN IDEA THEY LATER ABANDONED BUT NOT BEFORE THEY HAD PURCHASED A LOUIS POULSEN PH5 PENDANT. "IT ENDED UP IN THAT CORNER OF THE KIDS' PLAYROOM, WHICH WAS KIND OF HILARIOUS BECAUSE IT WAS ONE OF THE NICEST FIXTURES IN THE HOUSE," JESSE SAYS, ADDING THAT THEY USED CHALK PAINT TO CREATE AN EXPRESSION AREA FOR THEM. "UNDER THIS REALLY BEAUTIFUL MID-CENTURY PENDANT, THAT'S WHERE THEY COULD COLOR ON THE WALLS. THAT'S WHERE WE TOOK ALL THEIR FIRST-DAY-OF-SCHOOL PICTURES. THEY JUST REALLY LOVE HAVING THAT LITTLE AREA OVER THERE."



THE HOME'S NEUTRAL PALETTE IS PERVERSIVE THROUGHOUT THE HOME, BUT JESSE AND JASON'S AESTHETIC PHILOSOPHY CAN BE TRULY FELT IN THE PRIMARY SUITE. BENJAMIN MOORE'S "CHANTILLY LACE" MAKES FOR A LIGHT WALL, A NICE CONTRAST TO THE ORIGINAL WOOD TONGUE-AND-GROOVE CEILINGS. "WHAT SOME PEOPLE DO WHEN THEY'RE TRYING TO MODERNIZE THESE HOUSES IS THEY PAINT THE CEILING, WHICH IS, IN THIS SORT OF DECK HOUSE COMMUNITY, SACRILEGIOUS," JESSE SAYS. "WE KNEW WE DIDN'T WANT TO DO THAT."

For this and other creative workarounds, Jesse and Jason turned to a unique source. "We had found a group on Facebook called 'Deck House Owners,' and it's actually this really amazing group of people, multiple generations of people who have lived in Deck Houses," Jason says. "They could speak to their experience and share pictures and stories." Jason also would visit the next town over, Acton, Massachusetts, where Acorn Deck House is still headquartered today, literally going to the source for some troubleshooting. "I kind of put my butt in that place and started asking questions and making friends with people there," Jason says. "They were really great to guide us and help solve a whole lot of these problems in real time."

ROOM TO GROW

If restoring the home's '70s beauty and updating it for modern life weren't enough for Jesse and Jason, they also wanted to ensure their home would be safe for their two (now three) daughters and become a place they could really grow up in. "There was no railing, really, on the deck. It was just a 2x4, it was really dangerous," Jason says, describing the safety issues of the home's side deck. "And then the screened-in porch didn't have anything other than the

screen, so if a little kid ran, they would just run right through the screen." A more contemporary solution—running some cable railing at child- and pet level—allowed them to child-proof the signature Deck House decks while maintaining the light, airy aesthetic of the home. Other small details, like exchanging a raised hearth for one flush with the floor, allowed them to play with design features while ensuring their young children had as few obstacles as possible to enjoying the house to the fullest.

Renovating the Deck House wasn't just about the moment for Jesse and Jason. It was for all the moments they would experience as a growing family, from large holiday gatherings of siblings and cousins camping across the living room, to their daughters growing up in a home that was built for them at all stages of their childhood. This way of thinking is present in every detail of the house, down to the very choice in vanity material: "We wanted it to be playful, but not juvenile," Jesse says of the black-and-pink speckled terrazzo in their two eldest daughters' shared bathroom. "I wanted to keep it kind of girly and fun but something that could grow with them, that wouldn't feel too kid-like. And for a lot of people who have come to the house, that girls' bathroom is one of their favorite rooms." ☺



TOP, LEFT: NOT ONLY IS THERE A SKYLIGHT IN THE PRIMARY BATHROOM, IT'S FULLY OPERABLE. "WE ADDED THE SKYLIGHT SO YOU COULD OPEN THE WHOLE THING AND GET A LOT OF BREEZE," JASON SAYS. "IT ALMOST FEELS LIKE AN OUTDOOR SHOWER."

TOP, RIGHT: ORIGINALLY, THE PRIMARY WAS THE MAIN BATH ON THE SECOND FLOOR, AND JESSE AND JASON HAD ALL BUT RESIGNED THEMSELVES TO SHARING THEIR BATHROOM WITH GUESTS WHEN THEIR ARCHITECT FOUND A WAY TO CONSTRUCT A HALF BATH ON THE FLOOR. FREED TO FIND A NEW CONCEPT, THE COUPLE WENT FOR A WET-ROOM DESIGN THAT COMBINES SHOWER AND TUB INTO ONE TILED SPACE.

ABOVE, LEFT: THE TINY PINK HALF BATH WAS A MIRACLE GIVEN THE SPACE AND PLUMBING CONSTRAINTS OF THE HOUSE, BUT ARCHITECT MARYANN THOMPSON PULLED IT OUT OF THIN AIR, GIVING GUESTS A BATHROOM TO USE DURING PARTIES WHILE JESSE AND JASON COULD KEEP THEIR PRIVATE.

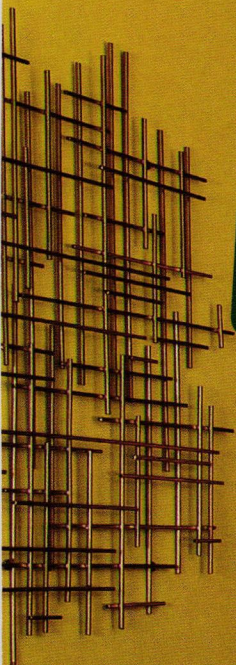
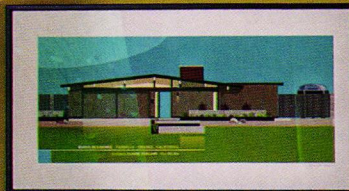
ABOVE, RIGHT: THE COUPLE'S TWO GIRLS WERE GOING TO SHARE A BATHROOM, SO ECONOMIZING SPACE WAS A PRIORITY. THE BLACK AND PINK TERRAZZO OF THE VANITY SPILLS OVER INTO A SHELF IN THE BATH FOR STORAGE AND SEATING AS NEEDED. AND THERE ISN'T A KNOB ANYWHERE IN SIGHT. "IN ALL THESE REALLY TIGHT SPACES, HARDWARE SOMETIMES CAN BE TRICKY," JESSE EXPLAINS. "YOU ALWAYS GET YOUR POCKET CAUGHT ON HARDWARE." INSTEAD, THEY WORKED WITH THE CABINET MAKER TO ROUTE ON THE EDGES OF THE CABINETS FOR EASY, HARDWARE-FREE PULLOUTS.

A Very Vintage Holiday

Family heirlooms and carefully chosen secondhand finds are the heart and soul of this merry Eichler.

By **Jickie Torres** | Photography by **Bret Gum**

CATHY'S FAVORITE WAY TO DECORATE FOR THE HOLIDAYS IS BY BEING CREATIVE WITH WHAT SHE HAS. "HAVING THINGS THAT I LOVE AND HAVE HAD OVER THE YEARS," SHE SAYS "I ALWAYS WANT TO DISPLAY THEM CREATIVELY."







Christmas is a time for nostalgia, and while Cathy Burns, a retired grade school teacher, is known to get creative with her décor, the key ingredients for the season's festivities are always the tried-and-true ones. Cathy has been living in this Eichler in the Fairhills tract of Orange, California, for the past 46 years and although she's certainly bucked some tradition (she wallpapered the wall in the dining room some years ago because, well, she wanted to and she could), during the holidays it's all about tradition.

"I ALWAYS PUT THE TREE IN THE SAME SPOT. I HAVE MOVED IT A COUPLE TIMES BUT IT ALWAYS ENDS UP BACK IN THAT WINDOW," CATHY SAYS. "IT'S WHAT MAKE SENSE; WHEN YOU WALK IN THE DOOR IT'S THE FIRST THING YOU SEE."





ABOVE, LEFT: SOMETIMES ALL YOU NEED IS A SET OF SHINY BRITE ORNAMENTS IN A VINTAGE BOWL TO BRIGHTEN UP A TABLETOP. THE BLOW MOLD SANTA AND SLEIGH IS JUST ONE OF A FEW PIECES OF CATHY'S HOLIDAY BLOW MOLD COLLECTION. ABOVE, RIGHT: MOST OF CATHY'S ORNAMENTS ARE VINTAGE—SOME FROM HER PARENTS, OTHERS SHE'S COLLECTED OVER THE YEARS AND THE REST WERE GIFTS OR ONES HER CHILDREN MADE. BELOW: A VINTAGE BANNER HANGS OVER CATHY'S WEST ELM CREDENZA IN THE DINING ROOM. IT'S ONE OF HER FAVORITE ITEMS WITH ITS LOG-INSPIRED FONT. THE BOTTLE BRUSH TREES ON THE TOP ARE SOME NEW, SOME VINTAGE.



Your Home Deserves

MID MOD

INSPIRATION.



Get a 1-year subscription to **Atomic Ranch** and **save 53%** on the cover price!

ONLY \$27.95



Scan QR code & pay online to get additional discount on offer price.

Fill out the form below and mail it to: EG Media Investments LLC, PO Box 74660, Chicago, IL 60675-4660



YES! Sign me up for a subscription to **Atomic Ranch** \$27.95.

(That's 6 issues for a \$29.95 savings on the cover price.)

Payment Method Check Enclosed Credit Card Money Order

Payment through Credit Card Visa MC AMEX Discover Name on Credit Card _____

Credit Card Number Exp. Date ___ / ___ / ____ CVV

Subscriber Name _____

Address _____

Phone _____ Email _____

Signature _____ Date ____/____/____

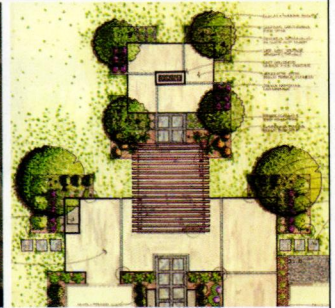
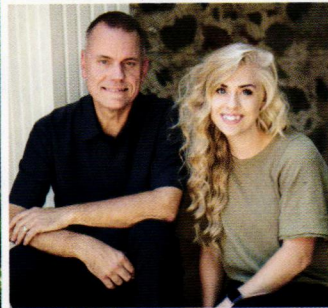
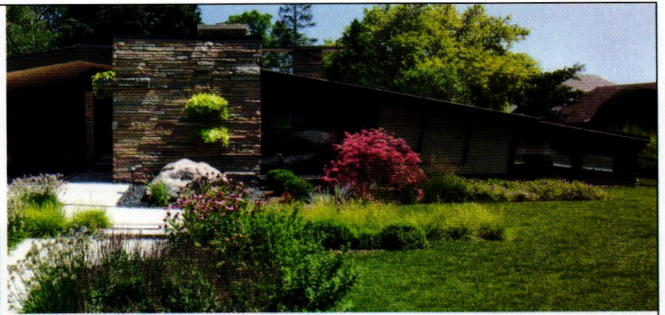
A84AR001

Visit www.atomic-ranch.com/ARq4 or call us at **844-330-6373** to place the order. Allow 6-8 weeks for delivery of first issue. Outside U.S., add \$30 per year for postage. Payment in U.S. funds only.



ginkgo leaf studio

LANDSCAPE DESIGN



Providing landscape design throughout the United States

ginkgoleafstudio.net

262.376.5050

MILWAUKEE WI • BOZEMAN MT



TIMELESS AUTHENTIC ENDURING

Celebrate the original character of your period home with the historically authentic Subway Ceramics collection of subway tile and complementary mosaics.

Reproduce your architectural style in a tile design that accurately reflects each period aesthetic, from Victorian Revival to Mid-Century Modern.



This authentic reproduction of an original Saul Bass relief design adds a dramatic shadow effect as a focal point in this contemporary kitchen backsplash.



Pictured Here:
Saul Bass diamond pattern in satin aqua
Starlight Village, Austin TX



888-387-3280
heritagetile.com



subwaytile.com/mcm



"WITH A BUFFET SET UP ON THE ORIGINAL PULLOUT TABLE IN THE KITCHEN/FAMILY ROOM AND PEOPLE IN THE ATRIUM, LIVING ROOM AND BACKYARD, NO MATTER HOW LARGE THE GROUP WE ARE STILL TOGETHER," CATHY SAYS. "EVERYONE CAN BE SEEN AND ABLE TO EASILY MOVE AROUND."

"We moved in '78. The house was 14 years old by then," Cathy says. "We were looking for something a little bit different. We didn't have a plan that it would be Mid Century Modern. We lived in a little house in Fullerton, right next to the city college, and we wanted something a little different." And that's what they got. Their previous neighborhood was full of country-style houses, as she describes them, with lots of curtains and small rooms. Cathy and her husband, Bill, a high school teacher, found out that their friends who lived in this Eichler before were going to sell, "move up in the world" and buy a nice new house on the hill. So, Cathy and Bill offered to buy it, a pocket listing. The couple became the home's third owner and as Cathy was pregnant at the time, this cool and different Eichler would grow for the next handful of decades as a warm and loving family home.



Your beautiful home starts here.

H3K HOME + DESIGN

Shop us online or in our showrooms!

PALM SPRINGS
501 S. Palm Canyon Drive

PALM DESERT
74180 Highway 111

(760) 325-5400

www.h3khome.com

Use coupon code **Atomic10**
and receive 10% OFF your online order.

(excludes Chilewich and Clearance)



AN EICHLER ENTHUSIAST

What has Cathy loved about living in an Eichler for all these years? "The openness, the glass," she says. "When I go into another kind of house, it's closed in. And I always come back and breathe in this house because I can see so much."

Cathy and Bill raised two kids there, hosted many Christmases and she says raising a family in a mod home was, "Well, it was fine," she chuckles. "It was easy with Eichler children. I had to be a lot more careful with non-Eichler children. We put stickers on the glass or doors; some kids would try to walk through the glass doors, but it was great. You could see so much, I could be in the kitchen or in the atrium and I could see where they were."

This open-plan house was also perfect for hosting for the holidays. "I've always hosted for the holidays. Ever since my oldest was born, everyone came here. It's easy to host in the Eichler; there's lots of room."

CATHY'S CHRISTMAS DÉCOR COLLECTION HAS BEEN LOVINGLY COLLECTED OVER THE YEARS, BUT THAT DOESN'T MEAN EVERY YEAR IS THE SAME. "THEY MAY BE THE SAME ITEMS, BUT THEY MOVE AROUND," SHE SAYS. "I'M ALWAYS LOOKING FOR A NEW WAY TO DISPLAY THEM. I HAVE A COLLECTION OF SNOWMEN AND THEY CAN END UP ANY PLACE IN THE HOUSE." IN THE FAMILY ROOM, HER HOLIDAY ALBUMS GET BUMPED TO THE FRONT OF THE RECORD HOLDER AND BECOME PART OF THE DÉCOR.



HANDCRAFTED TILE MADE IN PORTLAND, OR
www.clayhaustile.com | order direct at 503.928.3076



 **ALDEN B. DOW**
HOME & STUDIO
abdow.org • 866.315.7678

Explore this beautiful and inspirational mid-century modern architectural marvel during our December holiday tours.
Open Feb-Dec • Tours Tues-Sat by Reservation • Midland, MI



ABOVE: DURING THE HOLIDAYS, CATHY'S GLASS-FRONTED CABINETS GET REARRANGED TO INCLUDE SOME FESTIVE DINNERWARE AND GLASSWARE. A VINTAGE SALT-AND-PEPPER SANTA AND MRS. CLAUS SET ADDS A FUN TOUCH. WHILE NOTHING CAN REPLACE CATHY'S VINTAGE GEMS, SHE KNOWS HOW TO TAKE ADVANTAGE OF A FUN BUY WHEN SHE CAN. THE BRIGHTLY COLORED BOTTLE BRUSH WREATH ON THE PANTRY DOOR WAS FROM STARBUCKS. "IT WAS AFTER THE HOLIDAYS AND THEY WERE SELLING THEIR STORE DÉCOR. IT WAS THE PERFECT COLOR."

RIGHT: HOLIDAY GLASSES IN A MID CENTURY BARWARE CADDY STAY OUT FOR THE CHRISTMAS SEASON. CATHY'S TEA COOKIES ARE A FAMILY TRADITION.

While Cathy's holiday decorating style has certainly ebbed and flowed over the past 40-plus years, their tree is still the same every year. "Because I've got ornaments 50 years old, they all go on the tree and they have memories collected over the years," she says. "Although I have many of the same decorations up each Christmas I try to combine it differently each time. I want it to feel fresh but familiar because that's what we love about Christmas gatherings."

Many of her vintage items are actually from her parents. "I have some decorations that belong to my folks," she says. But even when she discerningly hunts for new items to add to her holiday repertoire, she usually buys old. "I like going to antiques stores and I try to look for things from the mid century with cleaner lines. It has to have that feel."

Cathy still hosts for the holidays, albeit the guest list is smaller and simpler. "We still have to have the same foods each year, like my mushroom merengue cookies for the holidays," she says. And with family heirlooms new and old bedecking the halls, the feeling, like the home, is warm, sentimental and special. ❄️



Weldtex

COMBED TILES & PANELS

WELDTEX IS BACK FROM THE MIDCENTURY!

Vintage Plywood provides Weldtex tiles & panels that are perfect for the mid-century flair you've been wanting for your home. Visit our website for more information about our products.



(415)883-5300

VintagePlywood.com



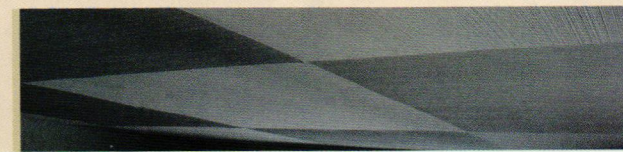
Ceiling Tiles



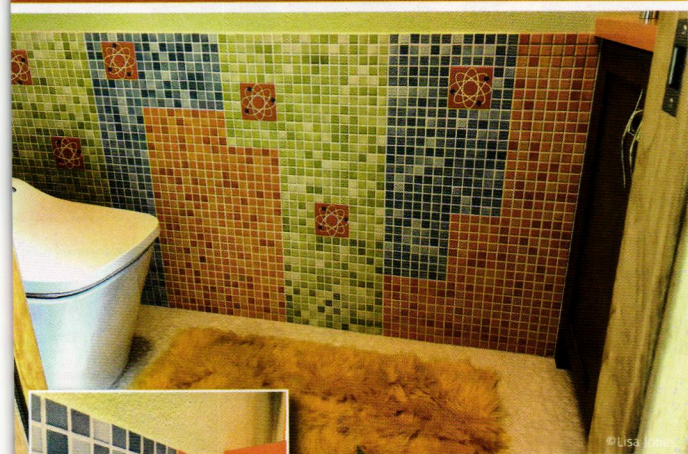
Accent Walls



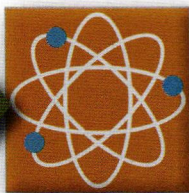
Wainscot



DECORATIVE TILE BY MAKE IT MID-CENTURY



Tile that Wows!



www.makeitmidcentury.com

THE RETROFUTURISTA ART OF



www.Kemelyen.Store

Cozy yet sleek fireplace inspiration for any mod home.

By Jackie Torres and Lindsay Jarvis | Photography by Jim Brown

By the Fireside

A great fireplace can transform any room into the ultimate relaxation or conversation spot! Glean some inspiration from these hearthside favorites.

1. THE FIREPLACE IN RICHARD NEUTRA'S 1958 HASSRICK HOUSE is pulled forward from the wall and its contrasting bright tone creates a pop against the darker surroundings. Cedar tongue-and-groove ceilings bring warmth to the room, while an expansive glass wall connects to the exterior. Split Rail lounge chairs provide a stylish spot for fireside relaxing.





FENWAY CLAYWORKS

Modern heirlooms for everyday life.
Hand-thrown pottery by our small team in Colorado.

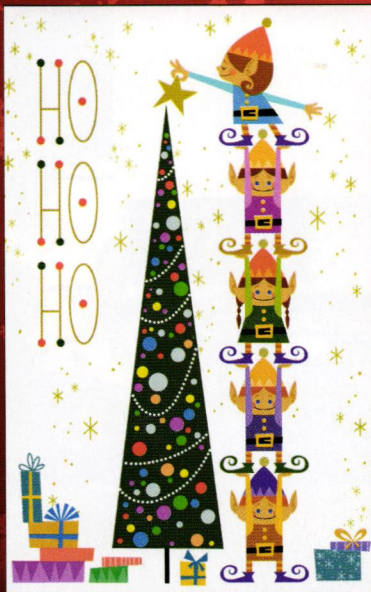
Use Promo Code: **ATOMIC** for **20% off** your first order

fenwayclayworks.com @fenwayclayworks

Now Available...

Mid Century Modern

Holiday Cards



MAC GEORGE ART PRINTS

www.macartprints.com | [mac_george_art_prints](https://www.instagram.com/mac_george_art_prints)



2. BUILT IN 1958 BY CARTER SPARKS, THIS WAS THE FIRST OF A SMALL SET OF 55 CUSTOM HOMES IN SACRAMENTO, California, separate from the tracts he worked on with the Steng Brothers. Next to the impressive fireplace is original built-in cantilevered seating against brick walls painted taupe by the homeowners. A frosted clerestory between the living room and bedroom brings warmth to the space, while a narrow window next to the hearth seating adds additional light.

3. A CRACKLING FIRE IS THE CENTERPIECE OF A COZY CONVERSATION AREA IN THIS 1958 HOME IN WALLINGFORD, Pennsylvania, by architect Irwin Stein. A built-in sofa near the hearth was reupholstered in Maharam wool and a metal wall sculpture adds dimension to the room. Acrylic shutters on the second-floor master bedroom allow a connection between the two floors. The sunken dining room to the right of the fireplace adds another place to entertain in this two-bedroom, split-level home.





Get more of the
mid mod content
you love online at
atomic-ranch.com

exclusive tours • travel ideas
DIY projects • recipes
real estate • shopping

A collage of images for Starlight Shades. At the top center is a logo with two deer silhouettes and the text "Starlight Shades Ultra Cool Lamp Shades". Surrounding the logo are various images of colorful, textured lamp shades in different colors like blue, red, yellow, green, and pink. Some shades are shown on lamps, while others are being held by hands. The background is dark, making the glowing shades stand out.

www.starlightshop.etsy.com

THE STARBURST



Be informed, be inspired, be
the first to know what's going on
in the world of MCM!

Are you getting **The Starburst**?
Your weekly guide to all things Mid Mod!

Sign up for the newsletter at
atomic-ranch.com.



Find more MCM holiday and year-round inspo over at atomic-ranch.com.

CREDIT: BRET GUM



House Tour: Merry, Minimal & Modern

Professional organizer Amanda Burns Clark maximizes limited space. Find inspiration from her own home.

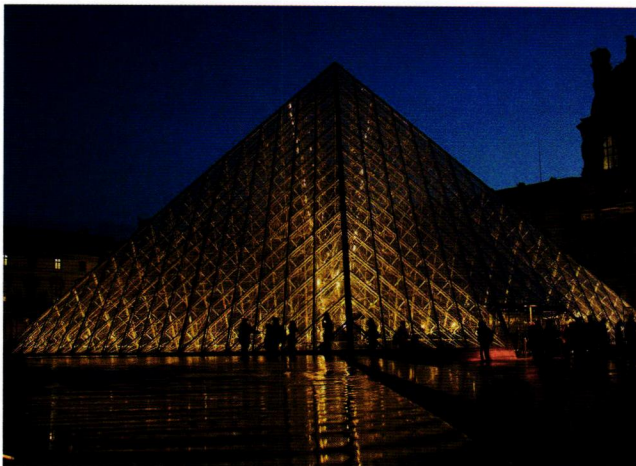


CREDIT: MARCO FRANCINO

These Holiday Cookies Were Made for You

'Tis the season for holiday cookies! Since your home and décor are Mid Century Modern, why not your cookies too? Here are some of our favorite holiday cookies in your favorite style.

CREDIT: HTEINK.MIN/CC-BY-SA-3.0



Modernist Index: I. M. Pei

Discover the life and works of I. M. Pei, the architect famous for the Louvre Pyramid, the National Gallery of Art East Building and more.



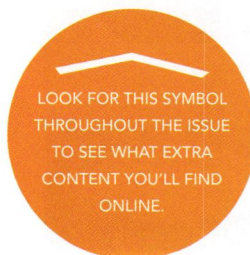
CREDIT: MOMA STORE

Cool Stuff: Mid Century Modern Gifts

You know it's a good gift when you are tempted to keep it—and these MCM gift ideas all passed that test! Browse some of our top gift picks.



Follow us online on **Facebook**, **Instagram** and **Pinterest** daily!



B&W Tile

Vintage Original Since 1949

1949-2024
75th Year
Anniversary

Colors
We Have Those!!



- Original vintage and historic colors
- Custom colors & Color Matching available
- Manufactured in North Hollywood California
- Nationwide shipping

www.bwtile.com
310-538-9579
info@bwtile.com

Custom HOME PORTRAITS



We all love the places we call home. We choose the colors, the furnishings, and the artwork that make our homes unique expressions of ourselves.

Let's work together to create a one-of-a-kind illustration highlighting what you love about your home!

*Get to know your home
in a whole new way.*



1959 BETTER HOMES & GARDENS IDEA HOME
DONALD HONN, AIA & BRUCE SUTHERLAND, AIA - ARAPAHO HILLS

CHRISTIAN MUSSELMAN

Illustration

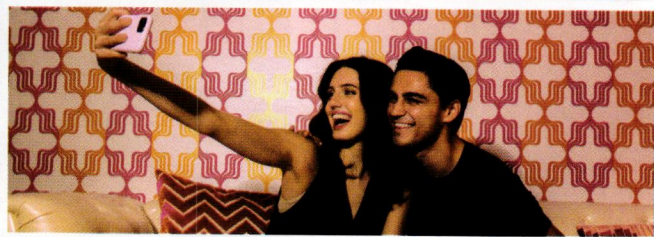
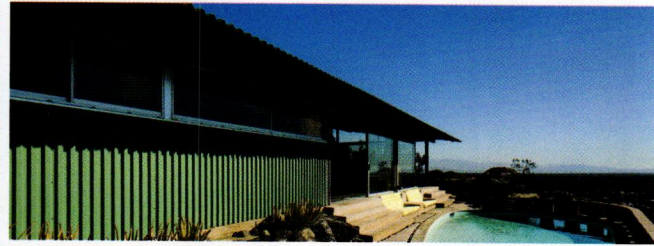
christianmusselman.com



modernism week®

CELEBRATING 20 YEARS

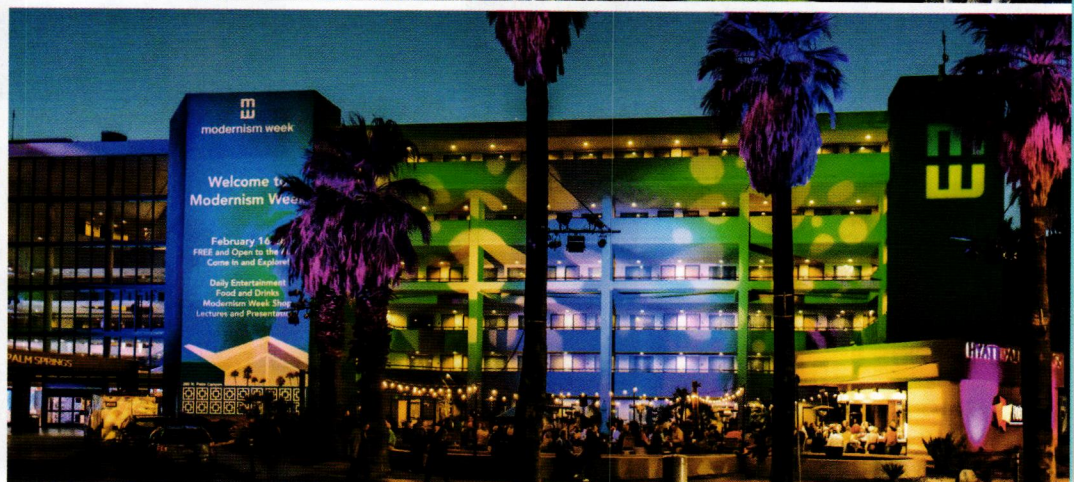
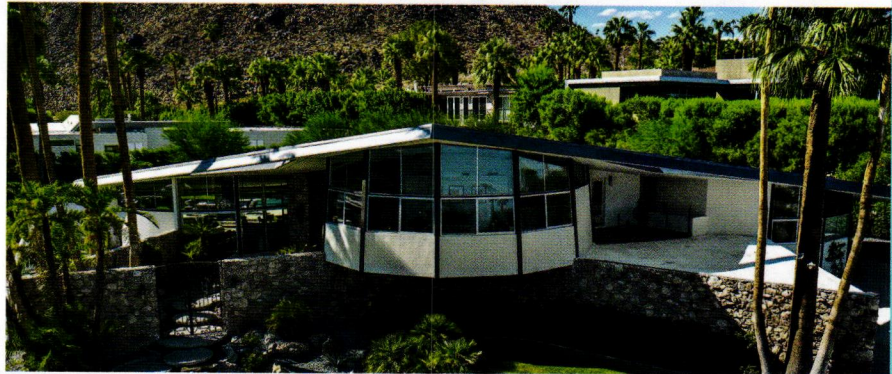
WHERE ARCHITECTURE MEETS INSPIRATION



FEBRUARY 13-23, 2025

PALM SPRINGS, CALIFORNIA

MORE THAN 400 EVENTS
OVER 11 DAYS



TICKETS AND INFORMATION AT modernismweek.com

Major



Grand



Civic Presenting



City of Palm Springs

Premier



Media



Style, Durability and Security

Introducing the new PackageBox from TedStuff, a stylish, locking mailbox in a variety of colors designed to handle small packages and larger mail capacities.

The PackageBox is available in both Retro and Uptown designs and comes in a variety of fun color combinations. There's also a lighting kit option. Like all TedStuff products, the PackageBox is easy to install and maintain and is built to last.

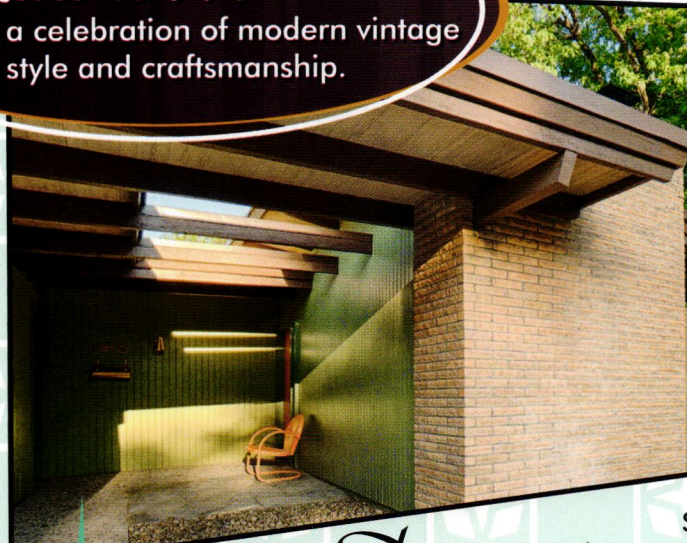
To find out more visit us at tedstuff.com

TedStuff

by Ted Juracsik



Retro is . . .
a celebration of modern vintage style and craftsmanship.



The Cattle House
Arapahoe Hills
Littleton, Colorado



Specializing in all types of mid-20th century retro homes, Kimber is your guide to buying and selling the most interesting, bold, and well-designed homes in Colorado.

REALTYONEGROUP
PREMIER

Kimber Dempsey
RETRO REALTOR.
ASSOCIATE BROKER

TheRetroRealtor.com

@KimberRetroRealtor FB.me/KimberRetroRealtor

Call or Text 303-913-4505
Kimber@TheRetroRealtor.com



atomicadvertisers

ACCESSORIES & ARTWORK

Atomic Mobiles 323-640-0003 atomicmobiles.com	87
Christian Musselman Illustration 773-209-8506 christianmusselman.com	81
Evans Family Company 858-461-8069 fagasstraps.com	88
Fenway Clayworks fenwayclayworks.com	77
Hazy Sunshine hazy-sunshine.com	16, 18
John Moran Auctioneers & Appraisers 626-793-1833 johnmoran.com	19
Kate McEnroe New York 917-455-5322 katemcenroeny.com	20
Kemelyen Ltd kemelyen.store	75

Mac George Art Prints macartprints.com	77
Matthew Smith Studios 828-785-4149 matthewsmithstudios.com	21
The Shag Store 760-322-3400 shagstore.com	9
Trevor Wayne, Inc. 442-304-8934 trevorwayne.com	20

DESIGN RESOURCES & BOOKS

Asheford Institute of Antiques 877-444-4508 asheford.com	84
---	----

EXTERIOR ACCESSORIES

Modbox USA, Inc. 919-332-0894 modboxusa.com	89
--	----

MODERN FURNITURE & FURNISHINGS

Elmira Stove Works 800-295-8498 elmirastoveworks.com	2
---	---

H3K Design 760-325-5400 h3khomeandesign.com	71
--	----

iio Kitchen 833-446-4461 iioKitchen.com	14-15
--	-------

LIGHTING Lume Home LLC 503-997-3080 lumehome.com	20
---	----

Lumens lumens.com	92
-----------------------------	----

Remcraft 800-327-6585 atomicremcraft.com	87
---	----

Starlight Shades starlightshop.etsy.com	79
---	----

TedStuff 561.272.0770 tedstuff.net	83
---	----

Tru-Tone tru-tone.com	27
---------------------------------	----

MID-CENTURY REALTORS & HOUSE TOURS

Alden B. Dow Home & Studio 866.315.7678 abdow.org	73
--	----

Dolphin Fairs dolphinfairs.com	82
--	----

Mid Century Homes 208-996-5759 mid-centuryhomes.com	11
--	----

MidMod Colorado/Adrian Kinney 303-219-0629 midmodcolorado.com	13
--	----

Modern Illinois 312-907-4085 modernil.com	89
--	----

Realty One Group-Lone Tree 303.913.4505 TheRetroRealtor.com	83
--	----

INTERIOR & EXTERIOR DESIGN & FINISHES

B&W Tile 310-538-9579 bwtile.com	81
---	----

Clayhaus 503-928-3076 clayhaustile.com	73
---	----

Farley Pavers 760-773-3960 farleypavers.com	3
--	---

Ginkgo Leaf Studio 262-376-5050 ginkgoleafstudio.net	69
---	----

Heritage Tile 888-387-3280 heritagetile.com	69
--	----

Kerf Design 206-954-8677 kerfdesign.com	91
--	----

Make It Mid Century makeitmidcentury.com	75
--	----

Modwalls 877-439-9734 modwalls.com	7
---	---

Nana Wall System Inc nanawall.com	17
---	----

Vintage Plywood 415-883-5300 vintageplywood.com	75
--	----

RESTAURANTS, LODGINGS, MUSEUMS

Agua Caliente Band of Cahuilla Indians 760-778-1079 accmuseum.org	25
--	----

VINTAGE SHOPS & FURNITURE REHAB

Car Pool Tables 727-827-8268 carpooltables.com	20
---	----

Would You Like To Be A Mid-Century Modern Antiques Dealer?

You Can:

*Start your own Mid-Century Modern Antiques Business

*Choose the hours you wish to work

* Become a "Certified" Decorative Arts Appraiser

*Complete an internationally recognized 12 Volume Course with Diploma & Appraisal Certification (PACC & USPAP)



www.asheford.com

For A FREE Course Prospectus Booklet:

www.asheford.com

Email: asheford@mail.com

Toll free: 877-444-4508

Or write to:

Asheford Institute: 981 Harbor Blvd.
Ste. 3, Dept. 275ATR41 Destin, FL 32541

Mid Century Modern House *Hunting* ?

Check out **Atomic Real Estate** - our curated list of
the best MCM houses on the market from across the country!



Are you a realtor looking to advertise
your latest Mid Century Modern?
Contact rdorsey@egmediamags.com



Scan the code to
check out our listings!

Your next **favorite modernist event** is coming to a home near you...

**ATOMIC RANCH
ON THE ROAD**



Scan here to find out more.

THE ANNUAL RESOURCE GUIDE

atomic ranch
MID-CENTURY MARVELS

Your one-stop shop for trusted sources and recommendations from Atomic Ranch for everything your mod home needs.



- Hardware
- Lighting
- Flooring
- Cabinets

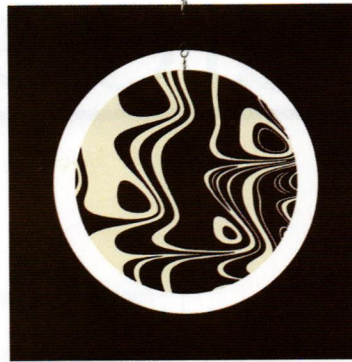


Everything!

Get it for free here!

www.atomic-ranch.com/single-issues

Mid Century Modern to **ULTRA MOD** Kinetic art that moves you!



SEVENTIES AF



- Hanging Mobiles
- XXL Mobiles
- Tabletop Stables
- Space Age Lamps
- Groovy Wall Art
- Retro Earrings

designed and made by Debbie in Los Angeles
Pugaroo Approved!

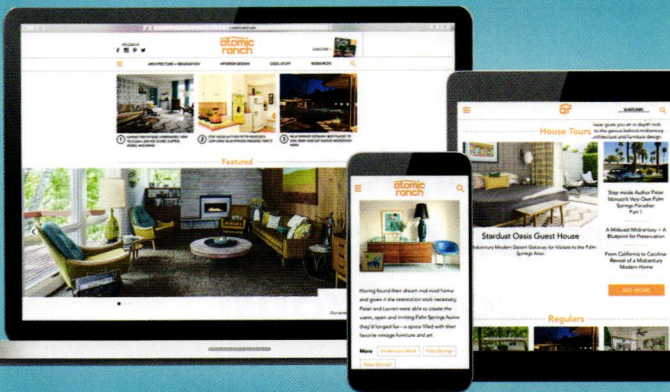


atomicmobiles.com

debbie@atomicmobiles.com | 323.640.0003 DISCOUNT CODE: ATOMICRANCH10

DO YOU HAVE A PASSION FOR MIDCENTURY DESIGN ... AND WRITING?

We're looking for well-versed mid mod enthusiasts to write for our website!



Visit www.atomic-ranch.com/contributors to learn more.

REMCRAFT UP-DOWN LIGHTS

Indoors or out — setting the standard...again.



other RETRO styles

Optional rain shields available for exposed areas!

RETRO
BY REMCRAFT

(800) 327-6585 www.atomicremcraft.com

resources

Renovations for Two

Page 22

To contact Forge & Bow, visit the company's website at forgeandbow.com.

Backsplash: Ann Sacks, Savoy Classic Field Tile, Bronze Shop Tile and Stone Products, kohler.com.

Island: Quartz Countertop Kitchen Island in polished Skara Brae, cambriausa.com.

Kitchen perimeter: Quartz Countertop in polished Pental Coastal Gray (polished), weaverstoneco.com.

Cabinet paint: Sherwin-Williams 2851 Sage Green Light, sherwin-williams.com.

Drawer pulls: CB2, CB2.com.

Light fixtures: Crate & Barrel, crateandbarrel.com.

Function & Flow

Page 28

Interior design: Karen Nepacena, Destination Eichler, destinationeichler.com.

Architect: Erin Eyerly, eyerlyarchitecture.com.

GC/builder, custom millwork: Daniel Awand
Surfaces: Frozen Terra, caesarstoneus.com.

Laminates: Wilsonart, Wilsonart.com, Formica, formica.com. Pinoite, panolam.com. Arpa, arpaindustriale.com, Print HPL, abetlaminati.com.

Range: Bertazzoni, us.bertazzoni.com.

Range hood: Futuro Futuro, futurofuturo.com.

Kitchen handles, hardware: Colonial Bronze, colonialbronze.com.

Tile/backsplash details: Fireclay Tile in triangle shape, fireclaytile.com. Feldspar glaze, feldspar.com.

Kitchen bar chairs: Room & Board, roomandboard.com.

Circular flush pulls: Deltana, deltana.net.

Dining table, chairs: Room & Board, roomandboard.com.

Floors: Tarkett, tarkettna.com.

Stewards of the Past

Page 44

Custom kitchen cabinets: Taylor Made Cabinets by Ron Taylor, (720) 220-9739.

Living room art: "Sound Wave" by Carlo of Hollywood.

Outdoor patio furniture: Crate & Barrel, crateandbarrel.com.

Primary bedroom bedding: West Elm, westelm.com.

TV room sofa: Custom from Room & Board, roomandboard.com.

It Takes a Township

Page 54

Primary bathtub: Jacuzzi Celeste tub from Fergusons, fergusons.com.

Primary bath tile: Daltile, grey floor tile, daltile.com. Cement Tile Shop Firework III, cementtileshop.com.

Secondary bathroom terrazzo: Eco-Terr Slab Black Sea, polished/brushed, coveringsetc.com.

Half-bath vanity sink and faucet: Duravit, duravit.com.

Half-bath wallpaper: "Shape Shifter" mural in blush, dropitmodern.com.

Primary bed frame: Room & Board, Wyatt bed, roomandboard.com.

Primary bedroom wallpaper: Fornasetti "Nuvolette" (black and white), cole-and-son.com.

Kitchen counter: Honed Montblanc quartzite.

Kitchen island: Leathered Belvedere quartzite via European granite and marble, Norwood, Massachusetts.

Exterior paint color: Benjamin Moore, HC-190 black, benjaminmoore.com.



Official US distributor
since 1945

Replace
broken or stretched
Fagas Straps!

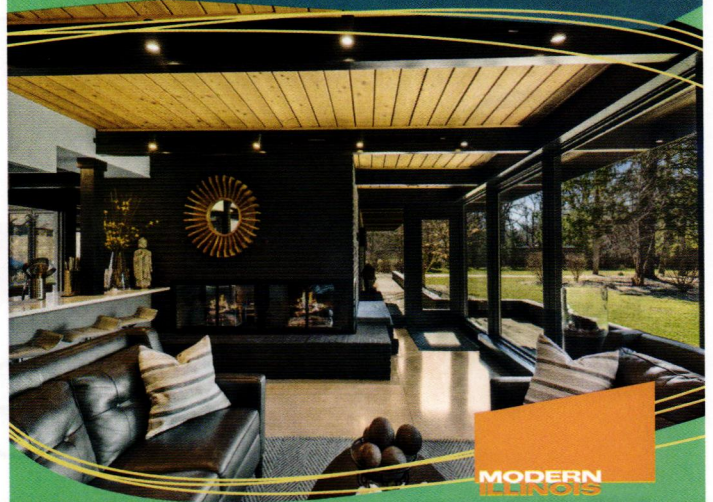
www.fagasstraps.com
info@fagasstraps.com 858.461.8069



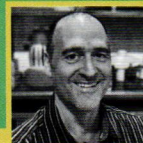
Get more of the
mid mod content
you love online at
atomic-ranch.com

- exclusive tours
- travel ideas
- DIY projects
- recipes
- real estate
- shopping

Your Chicago-Area
Mid-Century Modern &
Ranch Homes Specialist



**MODERN
ILLINOIS**
modernil.com



Lou Zucaro

lou@modernil.com • 312.907.4085

Baird & Warner

754 W. Northwest Highway, Barrington, IL 60010



modboxUSA

Mid-Century Modern Mailbox

modboxusa.com | 919.322.0894

O Christmas Tree

How the Rockefeller Center Christmas tree has become a signal of the holiday season in New York.

By Ian McMaster



RAISING the Rockefeller Center Christmas tree is a cherished tradition with roots dating back to 1931. It all started on a cold night during the Great Depression when workers at the Rockefeller Center construction site decided to bring a little cheer to their rather grim holiday season. They pooled their money to buy a 20-foot balsam fir and decorated it with homemade garlands made by their families. Though modest, this first tree symbolized hope and resilience in difficult times.

In 1933, the tradition became official when Rockefeller Center held its first public lighting ceremony. That year, the tree was adorned with 700 lights and the event marked the beginning of an annual spectacle that would grow in scale and grandeur. But from 1942 to 1945, no materials essential to America's World War II effort were used to decorate it, and the Rockefeller Center tree went unlit due to blackout regulations.

Over the 80 next years, the tree has become a towering symbol of the season, with recent trees often standing over 75 feet tall. The 1999 Norway spruce from Killingworth, Connecticut, was 100-foot-tall, making it the official record holder. The tree is now decorated with over 50,000 LED lights, covering nearly five miles of wire, and is topped with the massive Swarovski Star that features 3 million Swarovski crystals and weighs 900 pounds.

The lighting ceremony, typically held on the Wednesday after Thanksgiving, draws huge crowds and is broadcast to millions. From humble beginnings, the Rockefeller Center Christmas tree signals the official start of the holiday season in the Big Apple—and beyond. ❄️

SANTA CLAUS SUPERVISING THE CHRISTMAS TREE INSTALLATION AT ROCKEFELLER PLAZA IN NEW YORK ON DECEMBER 5, 1951. (PHOTO BY KEYSTONE-FRANCE/GAMMA-KEYSTONE VIA GETTY IMAGES).

KERF



Plywood cabinets for
modern homes, handmade
in Seattle since 1999.
kerfdesign.com



LUMENS

Enlightened by Design



Shop Cordless Favorites

[Lumens.com](https://www.lumens.com)



