

FRENCH RENAISSANCE NUMBER.

MARCH, 1894.

PHOTOGRAPHIC FACSIMILES OF

European Architecture.

PUBLISHED MONTHLY.

SECOND YEAR—NUMBER 6.

PRICE, \$1.00 PER NUMBER; \$10.00 PER YEAR.

Entered at Post Office at Chicago as
Second-Class Matter.

COPYRIGHT 1894 BY
OLIVER C. SMITH, ALLYN A. PACKARD,
PUBLISHERS.
GAFF BUILDING, CHICAGO.

ROCK WALL PLASTER

IS MANUFACTURED AND USED EVERYWHERE
HARDER, BETTER, EASIER WORKED AND
CHEAPER THAN ANYTHING ON THE MARKET

Rock Plaster Co. of New York.
Rock Plaster Co. of Chicago.
Rock Plaster Co. of Decatur, Ill.
Rock Plaster Co. of Brooklyn and New Jersey.
Rock Plaster Co. of Washington, Seattle, Washington.
The Rock Plaster Mfg. Co. of Columbus, O.
The Dresden Rock Plaster Mfg. Co. of Dresden, Ohio.
The Rock Plaster Co. of Rockford, Ill.
The Rock Plaster Co. of Toledo, Ohio.

ROCK PLASTER CO. OF CHICAGO
1204 CHAMBER OF COMMERCE...

ROCK PLASTER CO. OF NEW YORK
44 BROADWAY...

... CONTENTS ...

No. 6. March, 1894.

- | | |
|--|---|
| 171. LAROCHEFOUCAULD—Facade of Interior Court. | 176. CHAMBORD—Detail of Dormer and Chimney. |
| 172. ROUEN—Detail of Hotel Bourgtheroulde. | 177. BEAUGENCY—Hotel de Ville. |
| 173. MONTRESOR—Detail of Principal Door to Church. | 178. ORLEANS—House of Diana of Poitiers. |
| 174. CHENONCEAUX—Facade of Chateau. | 179. ST. PATRICE, NEAR CHINON—Chapel of Chateau d'Usse. |
| 175. CHENONCEAUX—Detail of Doorway. | 180. CHENONCEAUX—Detail of Mantel. |



European Architecture.

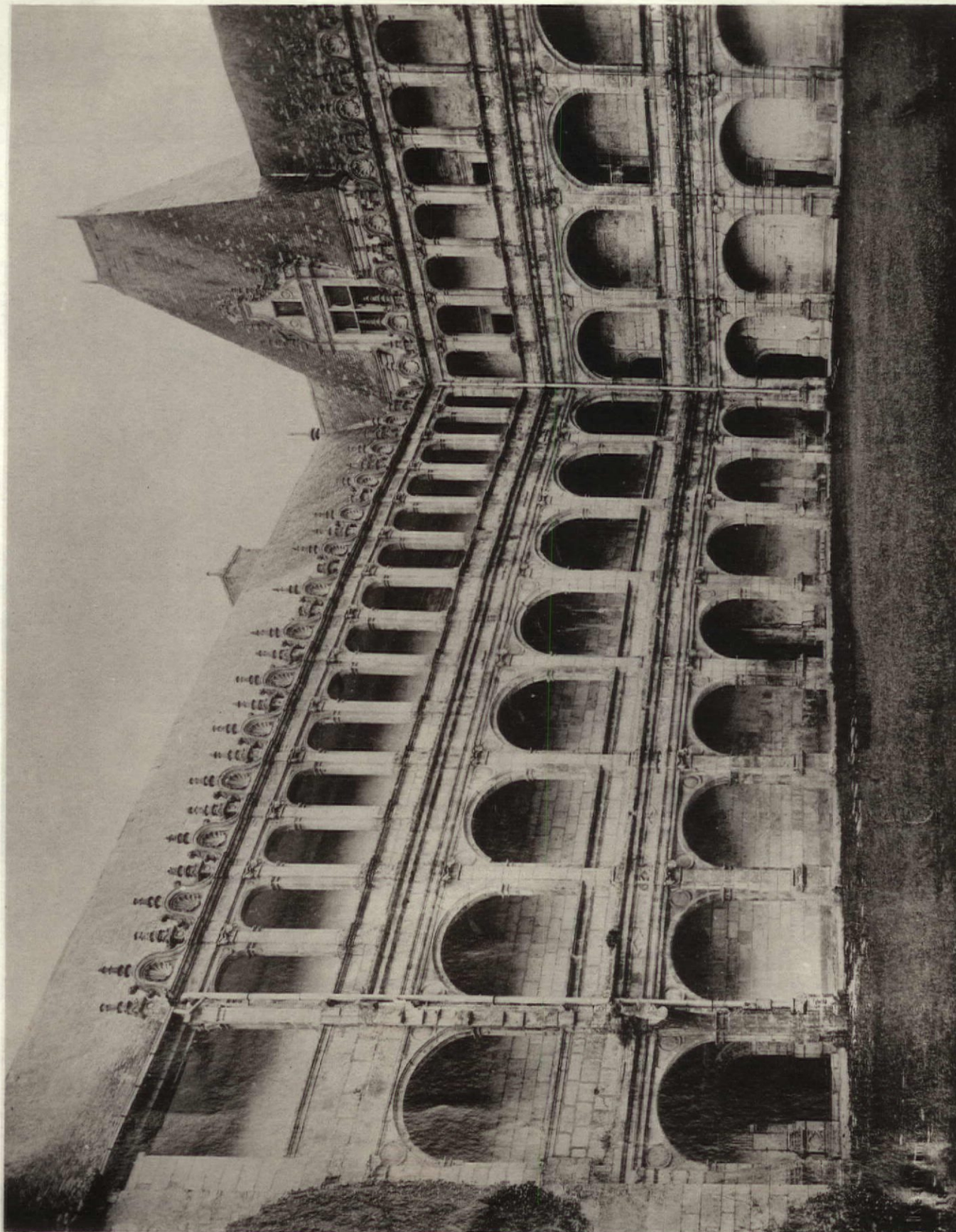


PLATE 171

LAROCHEFOUCAULD. —FACADE OF INNER COURT OF CHATEAU LAROCHEFOUCAULD.

THIS HUGE PILE WAS BUILT IN THE FORM OF A SQUARE WITH ONE SIDE OPEN—A RANGE OF ARCADES SERVE AS A PASSAGE ALONG THE INNER COURT.

COPYRIGHT 1894, BY SMITH & PACKARD.

European Architecture.



PLATE 172

COPYRIGHT 1894, BY SMITH & PACKARD

ROUEN.—DETAIL OF FACADE OF HOTEL BOURGTHEROULDE.
ERECTED IN THE XV. CENT.

European Architecture.

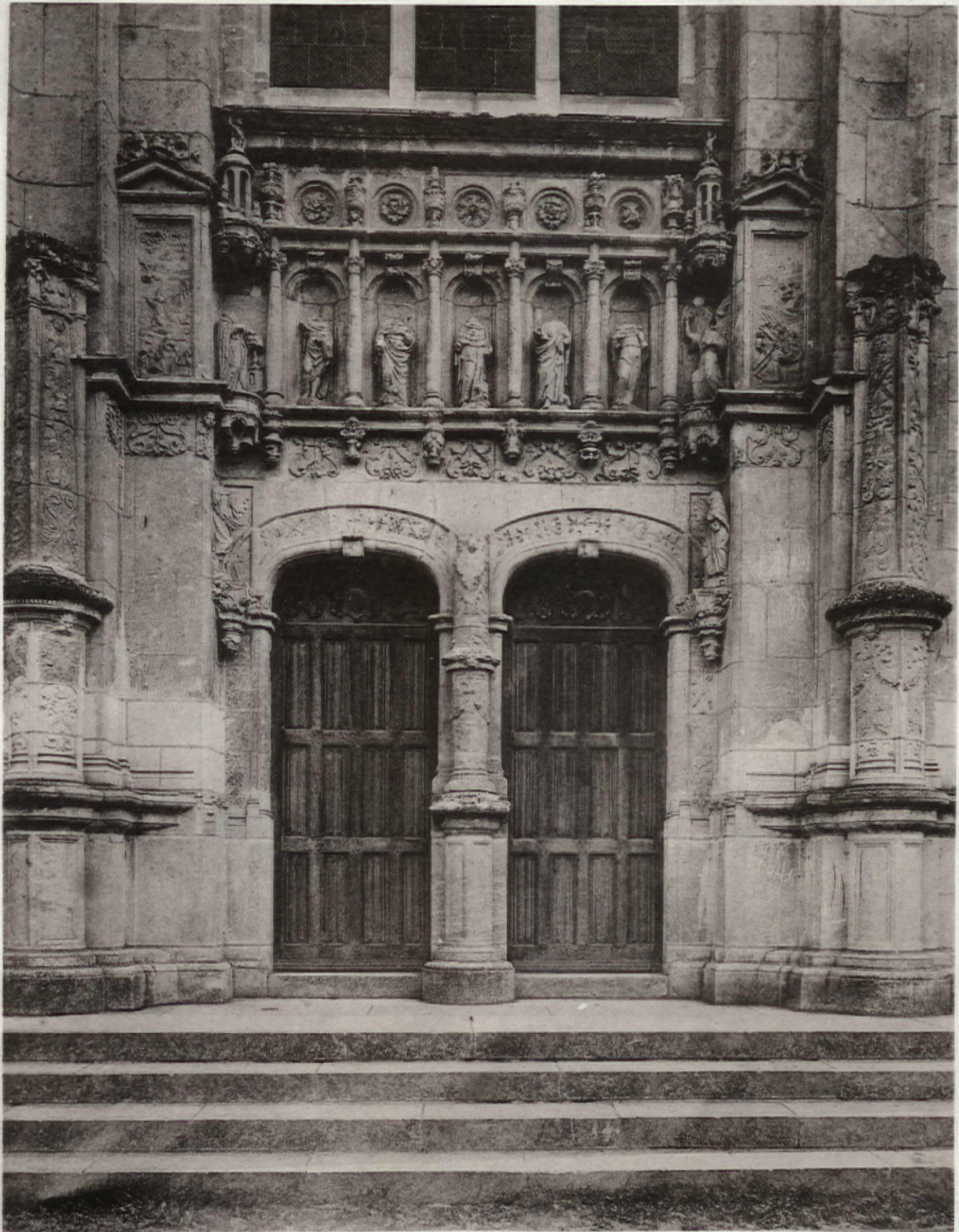


PLATE 173

COPYRIGHT 1894, BY SMITH & PACKARD

MONTRESOR.—DETAIL OF DOORWAY TO A CHURCH IN MONTRESOR.

European Architecture.

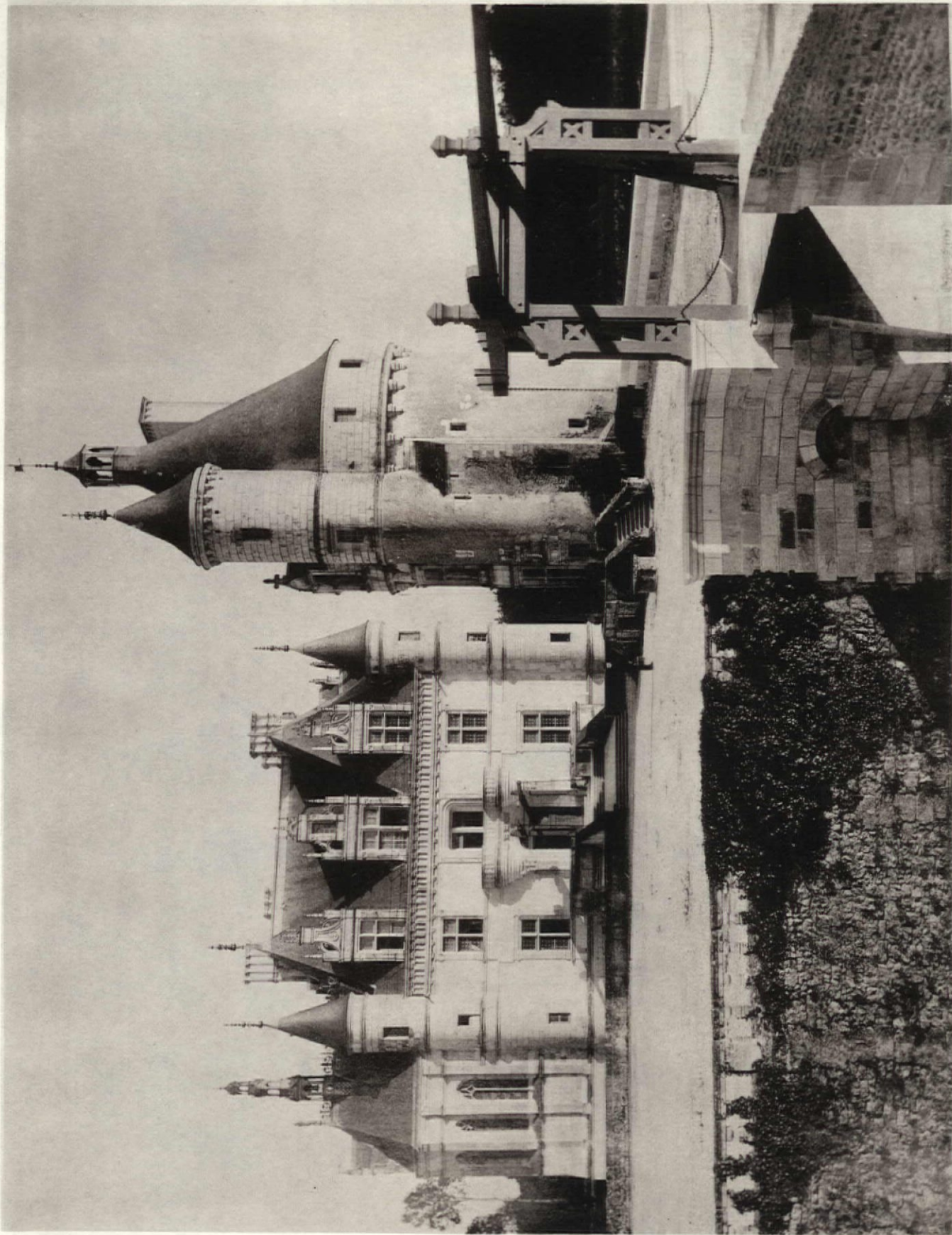


PLATE 174

CHENONCEAUX.—FACADE OF CHATEAU.

DATES FROM THE PERIOD OF TRANSITION FROM GOTHIC TO THAT OF ITALIAN RENAISSANCE. IT OCCUPIES A CURIOUS SITUATION, AND THE EXTENDED END IS SUPPORTED MOSTLY ON PILES IN THE RIVER CHER, WHICH ORIGINALLY WERE THE FOUNDATIONS OF A MILL. THE CHATEAU WAS FOUNDED IN 1515 BY THOS. BOHIER—DESIGN ATTRIBUTED TO PIERRE NEPVEU.

COPYRIGHT 1914, BY SMITH & PACKARD

European Architecture.



PLATE 178

COPYRIGHT 1884, BY SMITH & PACKARD

CHENONCEAUX.—DETAIL OF MAIN ENTRANCE TO CHATEAU CHENONCEAUX.

European Architecture.

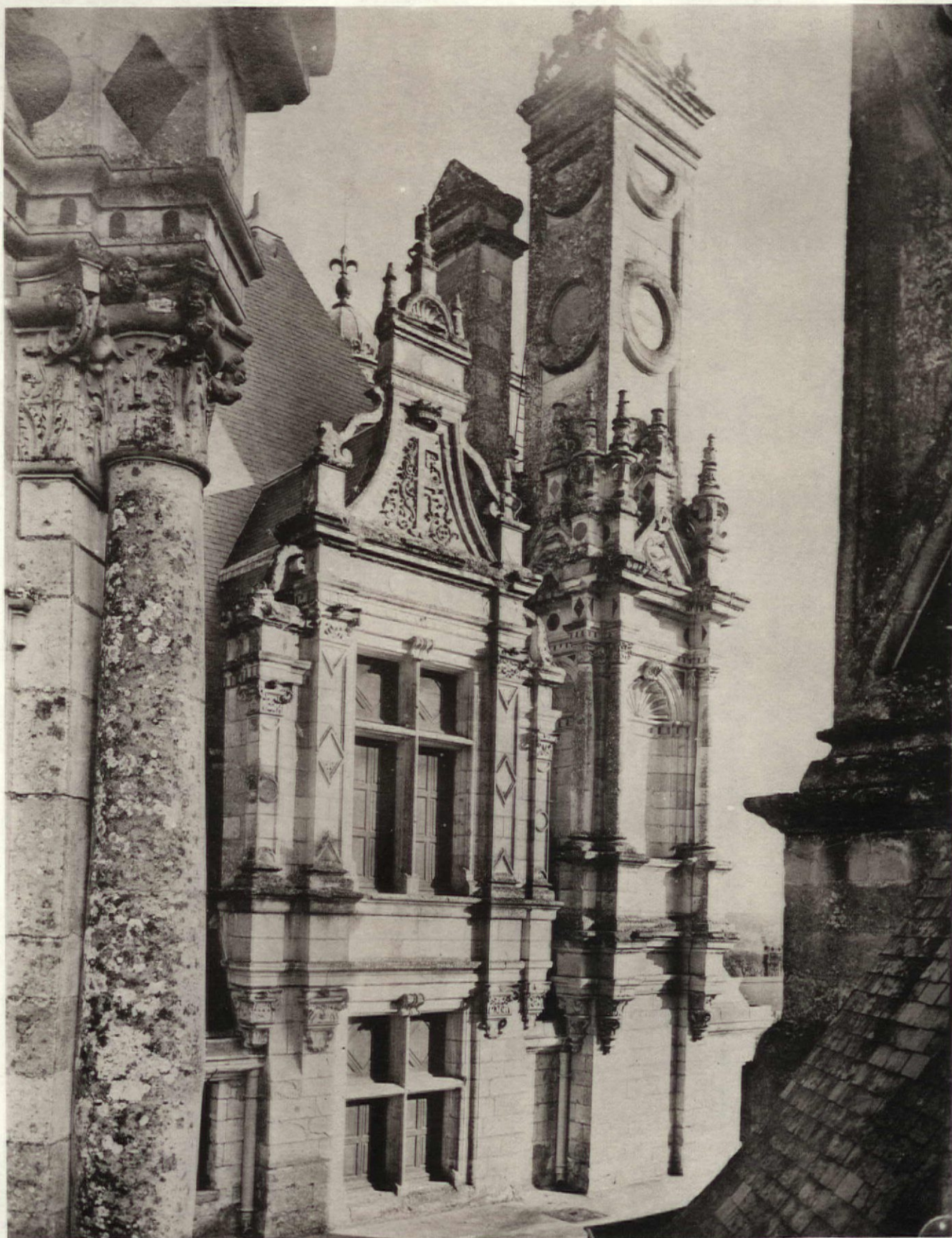


PLATE 176

COPYRIGHT 1894, BY SMITH & PACKARD.

CHAMBORD.—DETAIL OF DORMER AND CHIMNEY OF CHATEAU CHAMBORD.

THIS CHATEAU WAS ONE OF THE FINEST OF THE RENAISSANCE PALACES BUILT BY PIERRE NEPVEU FOR FRANCIS I. IT CONTAINED FOUR HUNDRED AND FORTY APARTMENTS AND FRANCIS I. EMPLOYED EIGHTEEN HUNDRED MEN CONTINUALLY ON ITS CONSTRUCTION, UNTIL HIS DEATH.

European Architecture.

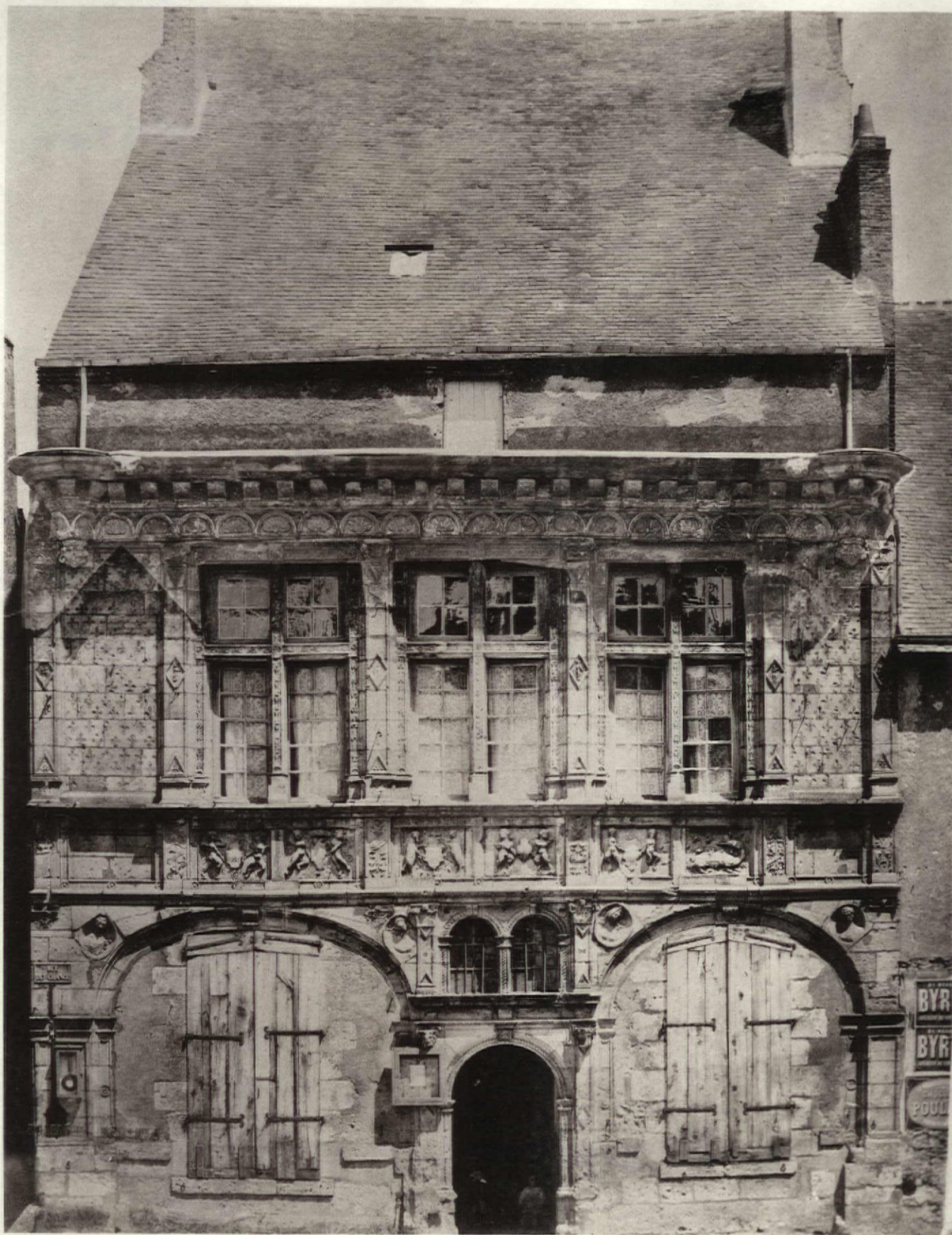


PLATE 177

COPYRIGHT 1906, BY SMITH & PACKARD.

BEAUGENCY.—FACADE OF HOTEL DE VILLE—ERECTED IN 1526.

European Architecture.

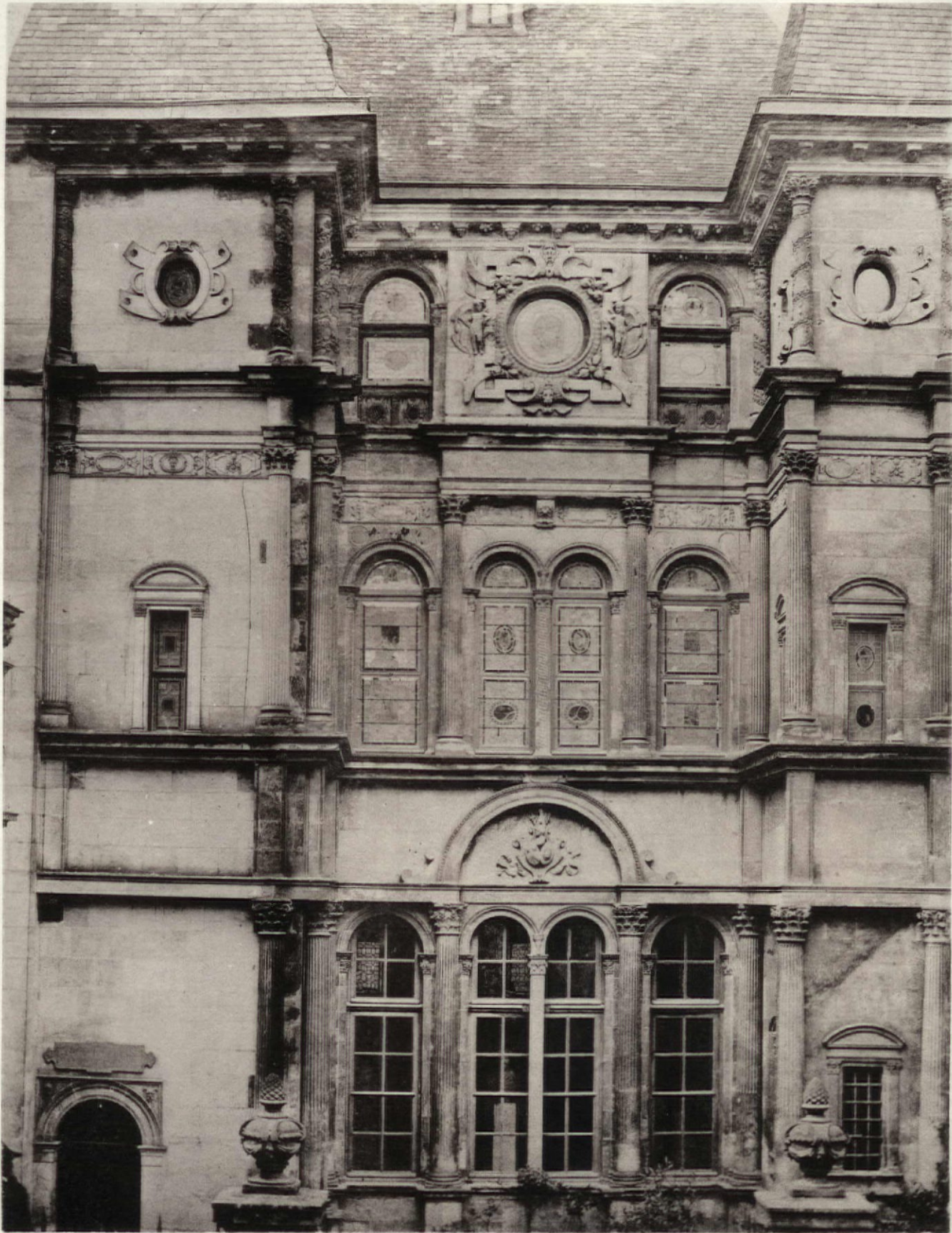


PLATE 17B

COPYRIGHT 1894, BY SMITH & PACKARD.

ORLEANS.—FACADE OF THE HOUSE OF DIANA OF POITIERS.
THIS IS NOT THE HOUSE OF DIANA OF PORTIERS. ALTHOUGH SO-CALLED, BUT IS HOTEL CABUT.

European Architecture.

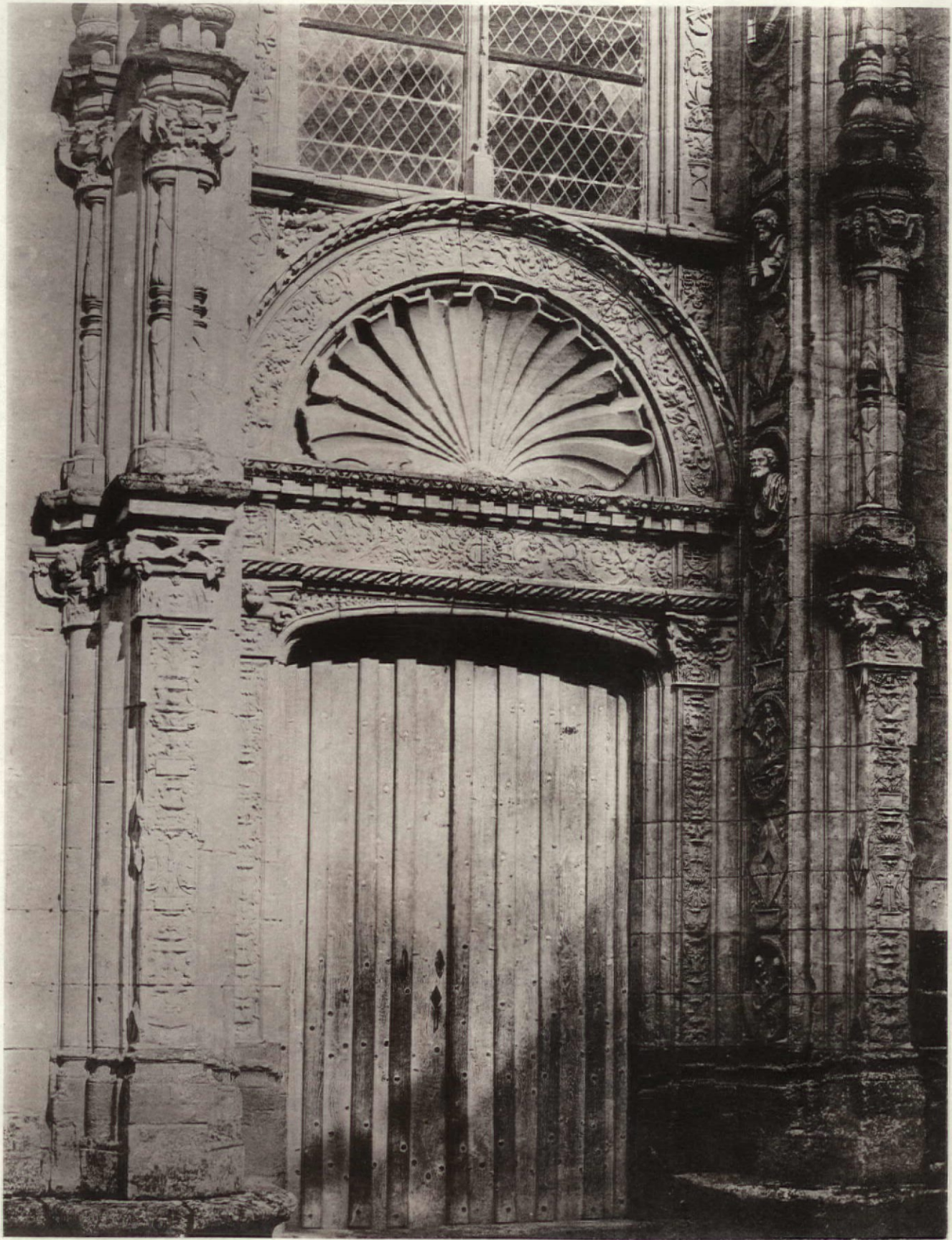


PLATE 179

COPYRIGHT 1894, BY SMITH & PACKARD.

ST. PATRICE, NEAR CHINON.—DETAIL OF DOOR TO CHAPEL OF CHATEAU D'USSE XVI. CENT.



PLATE 180

CHENONCEAUX.—DETAIL OF MANTEL IN CHATEAU CHENONCEAUX XVI. CENT.

ARTISTIC WOOD MANTELS

OF 100 DIFFERENT DESIGNS AT ALL PRICES
ARE MANUFACTURED BY THE

INTERIOR WOODWORKING CO.
307 WABASH AVE. CHICAGO.

CONTRACTORS FOR SPECIAL FURNITURE
AND INTERIOR FINISH ~
ARTISTIC FIREPLACE FURNISHINGS
AND TILE WORK OF ALL KINDS ~