

ITALIAN RENAISSANCE NUMBER.

MAY, 1894.

PHOTOGRAPHIC FACSIMILES OF

European  
Architecture.

PUBLISHED MONTHLY.

SECOND YEAR—NUMBER 8.

PRICE, \$1.00 PER NUMBER; \$10.00 PER YEAR.

Entered at Post Office at Chicago as  
Second-Class Matter.

COPYRIGHT 1894 BY  
OLIVER C. SMITH, ALLYN A. PACKARD,  
PUBLISHERS.  
601 MEDINAH BUILDING, CHICAGO.



# The Columbus Model Folding Kodaks

COMBINE THE DESIRABLE FEATURES OF A COMPLETE VIEW CAMERA  
WITH THE COMPACTNESS OF A KODAK.

**The Lens** covers the plate fully, even when the front is raised. It is instantly removable and can be replaced by a wide angle lens which fits the same shutter.

**The Shutter.** The folding Kodaks are now fitted with an iris diaphragm shutter, having a pneumatic release and a range of automatic exposures from  $\frac{1}{100}$  of a second to 3 seconds.

**A Double Swing Back** and sliding front are among the improvements. These Kodaks can be focused with the index or on ground glass; can be used as hand or tripod cameras and are easily adapted to stereoscopic work.

		For Film and Glass.
No. 4 (For 4 x 5 pictures),	- - -	\$ 60.00
No. 5 (For 5 x 7 pictures),	- - -	75.00
No. 6 (For 6½ x 8½ pictures),	- - -	100.00

**Eastman Kodak Company,**

Send for Circular,

ROCHESTER, N. Y.

## ... CONTENTS ...

No. 8. May, 1894.

- |   |   |
|---|---|
| 191. BOLOGNA—Facade of Palace of the Podesta.                 | 196. VENICE—Detail of Capital in Palazzo Zorsi.                     |
| 192. SIENNA—Detail of Balustrade to Pulpit in Cathedral.      | 197. BOLOGNA—Detail of Archivolt Moulding in Palace of the Podesta. |
| 193. URBINO—Detail of Frieze in Ducal Palace.                 | 198. BOLOGNA—Detail of Capital and Base of Monument of Tartagni.    |
| 194. URBINO—Detail of Candelabra in Pilaster in Ducal Palace. | 199. FLORENCE—Facade of Rucellai Palace.                            |
| 195. URBINO—Detail of Candelabra in Pilaster in Ducal Palace. | 200. VENICE—Detail of Balusters in S. Maria Miracoli.               |





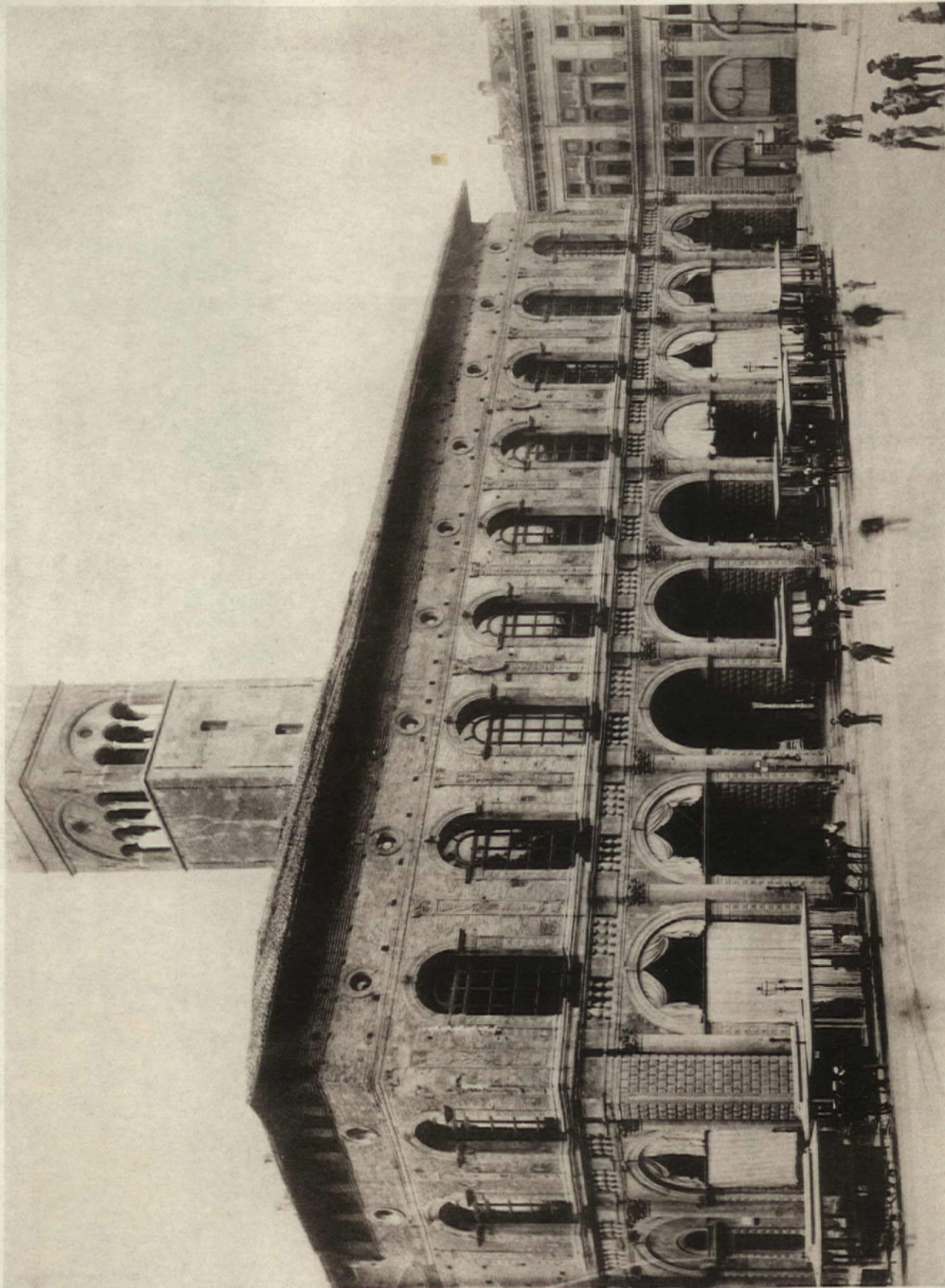
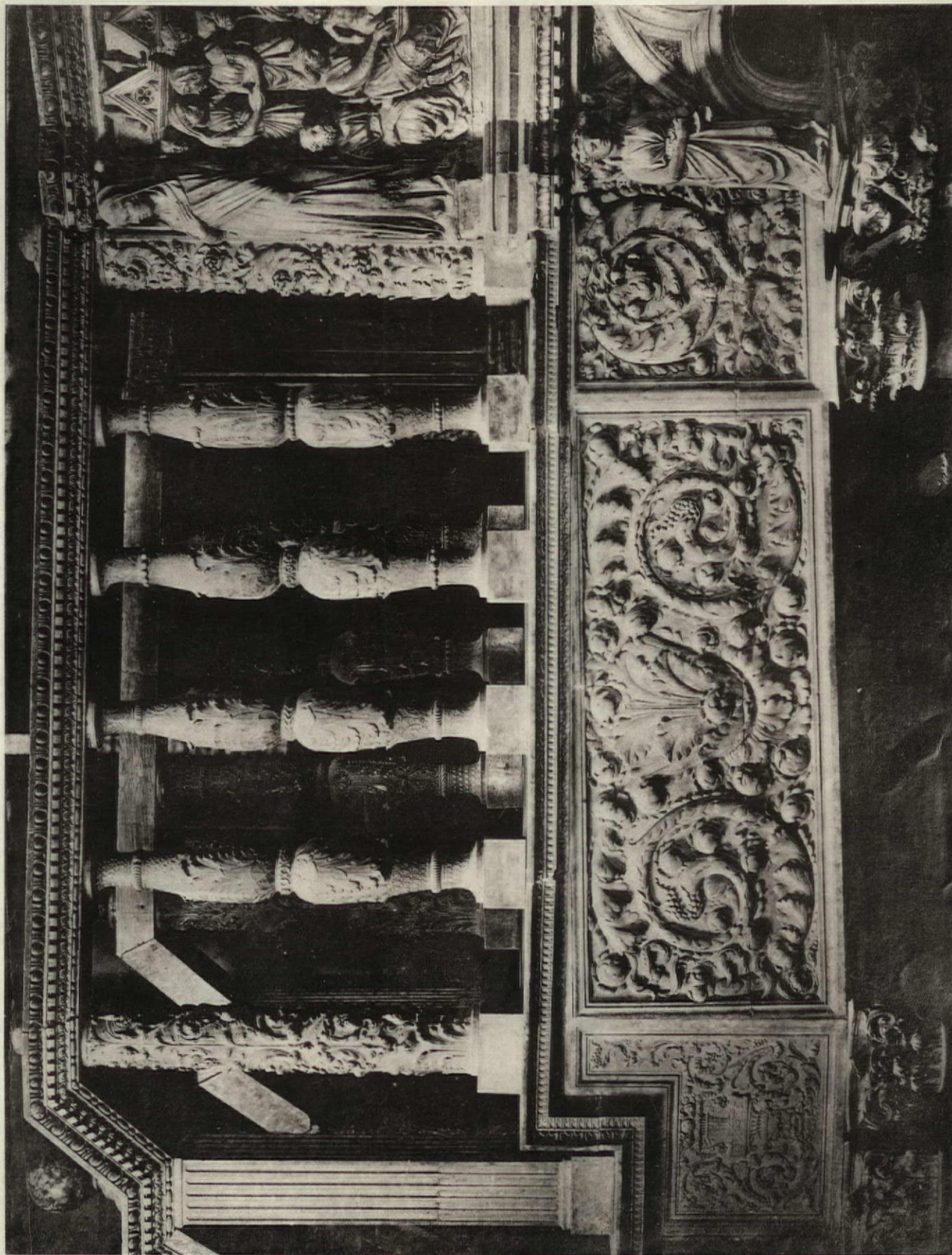


PLATE 101.

BOLOGNA—FACADE OF THE PALACE OF THE PODESTA.  
ORIGINAL BUILDING ERECTED IN 1201. THIS FACADE IN 1485.

COPYRIGHT 1894, BY SMITH & PACKARD.





COPYRIGHT 1894, BY SMITH & PACKARD.

SIENNA—DETAIL OF STAIRCASE LEADING TO THE PULPIT IN THE CATHEDRAL.  
DESIGNED BY BARTOLO NEGRONI IN 1570.





PLATE 109.

COPYRIGHT 1894, BY SMITH & PACKARD.

URBINO—DETAIL OF A FRIEZE AROUND A FIRE-PLACE IN THE DUCAL PALACE, 15TH CENTURY.

THE DUCAL PALACE WAS ERECTED BY LUCIANO LAURANA OF DALMATIA IN 1468, IS NOW  
USED AS A GOVERNMENT RESIDENCE.



European Architecture.



PLATE 194.

COPYRIGHT 1894, BY SMITH & PACKARD

URBINO—DETAIL OF A PORTION OF A CANDELABRA, IN A PILASTER IN DUCAL PALACE, 15TH CENTURY.



European Architecture.

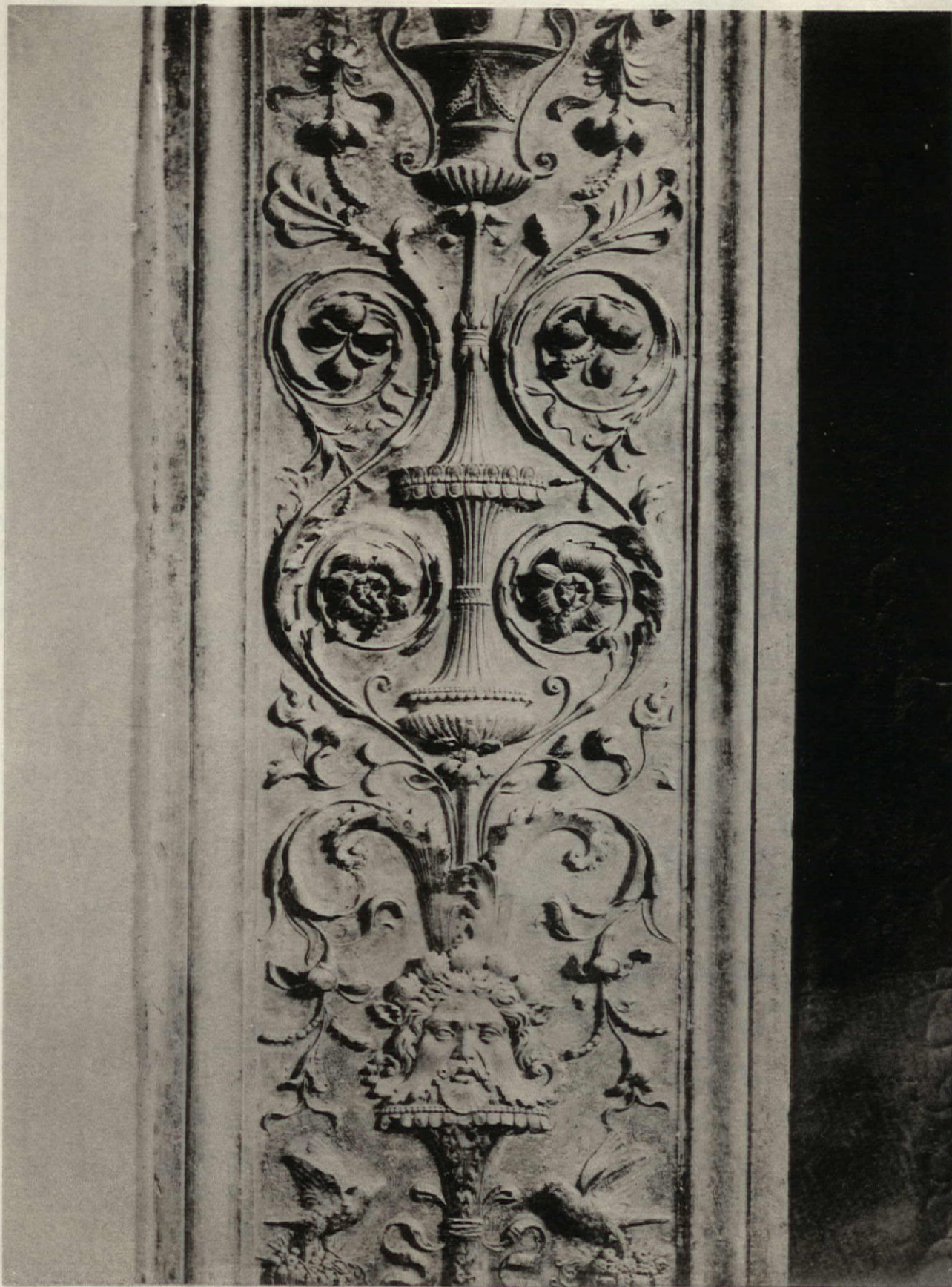


PLATE 195.

COPYRIGHT 1894, BY SMITH & PACKARD

URBINO—DETAIL OF A PORTION OF CANDELABRA, IN A PILASTER IN DUCAL PALACE.





PLATE 196.

VENICE—DETAIL OF CAPITAL FROM THE PALAZZO ZORSI—15TH CENTURY,  
ATTRIBUTED TO ALESSANDRO LEOPARDI.

COPYRIGHT 1994, BY SMITH & PACKARD.





COPYRIGHT 1894, BY SMITH & PACKARD.

BOLOGNA—DETAIL OF AN ARCHIVOLT MOULDING IN PALACE OF PODESTA.

PLATE 167.



European Architecture.



PLATE 198.

COPYRIGHT 1894, BY SMITH & PACKARD

BOLOGNA—DETAIL OF CAPITAL AND BASE OF THE MONUMENT OF ALESSANDRO TARTAGNI, THE JURIST.

DESIGNED BY FRANCESCO SIMONE, 1477.



European Architecture.



PLATE 199.

COPYRIGHT 1894, BY SMITH & PACKARD

FLORENCE—FACADE OF RUCELLAI PALACE.

ERECTED IN 1460, FROM DESIGNS BY LEON BAPTISTA ALBERTI, WHO FOR THE FIRST TIME HERE EMPLOYED A COMBINATION OF RUSTICA AND PILASTERS.





PLATE 200.

COPYRIGHT 1894, BY SMITH & PACKARD

VENICE—DETAIL OF BALUSTERS IN CHURCH OF S. MIRACOLI.

DESIGNED BY PIETRO LOMBARDO, ABOUT 1480.



ARTISTIC WOOD MANTELS

OF 100 DIFFERENT DESIGNS AT ALL PRICES  
ARE MANUFACTURED BY THE

INTERIOR WOODWORKING CO.  
307 WABASH AVE. CHICAGO.

CONTRACTORS FOR SPECIAL FURNITURE  
AND INTERIOR FINISH ~  
ARTISTIC FIREPLACE FURNISHINGS  
AND TILE WORK OF ALL KINDS ~

CHICAGO VARNISH CO.

MANUFACTURERS OF

HIGH GRADE ARCHITECTURAL FINISHES

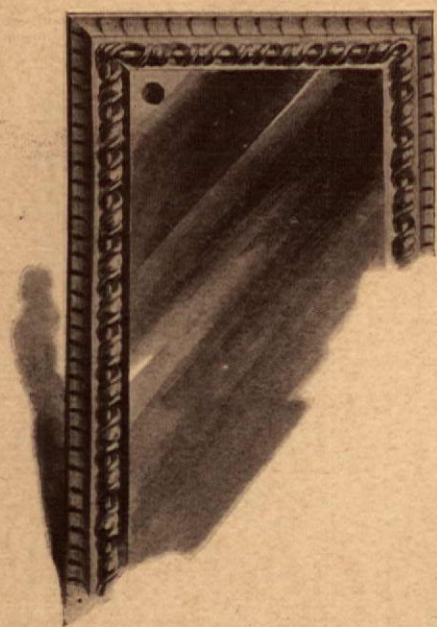
41 DEARBORN AVENUE, CHICAGO.

Pearl Street and Maiden Lane, NEW YORK.

Pearl and High Streets, BOSTON.

142 North Fourth Street, PHILADELPHIA.





# READING HARDWARE COMPANY,

MANUFACTURERS OF

"VASSAR" CYLINDER LOCKS

—AND—

FINE BIT-KEY DOOR LOCKS.

COMPLETE LINES OF

BRONZE HARDWARE

IN A GREAT VARIETY OF

ARTISTIC DESIGNS

To suit the requirements of every style of Modern Architecture.

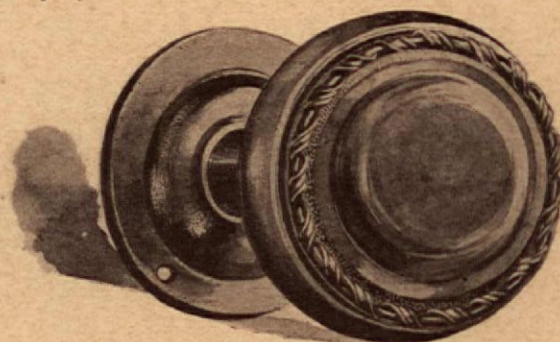
FACTORIES, . . . READING, PA.

STORES AND SAMPLE ROOMS,

NEW YORK. PHILADELPHIA. CHICAGO.

CHICAGO OFFICE,

73 WABASH AVENUE.





## A. H. ANDREWS & Co.

15-221 WABASH AVE. CHICAGO ESTABLISHED 1865

### BANK OFFICE AND COURT-HOUSE FURNITURE

OPERA & CHURCH CHAIRS  
 ANDREWS METAL CHAIRS  
 CHEAPEST CHAIR MADE  
 NICKEL, OLD COPPER  
 AND BRASS FINISH  
 FOLDING BEDS.

OFFICE DESKS & SCREENS  
 BRASS, IRON  
 AND WIRE WORK  
 INTERIOR WOOD WORK



**SIX AWARDS**  
 WORLD'S  
 COLUMBIAN EXPOSITION

- 1 BANK FIXTURES & METALWORK
- 2 OFFICE DESKS & FITTINGS
- 3 FOLDING BEDS
- 4 OPERA CHAIRS
- 5 METAL (STEEL) CHAIRS
- 6 LUMBER DRY KILNS



## FLANAGAN AND BIEDENWEG

ARTISTS IN STAINED GLASS

POSITIVELY MANUFACTURED IN EVERY BRANCH

HENDERSONS PATENT COPPER METALLIC SASH

OFFICE & FACTORY  
 87-89 ILLINOIS ST.  
 CHICAGO

SHOW ROOMS  
 442-462 WABASH AV.  
 CHICAGO

DESIGNS FURNISHED IN ALL THE CLASSIC STYLES