

SPIRES AND TOWERS OF FRANCE.

AUGUST, 1894.

PHOTOGRAPHIC FACSIMILES OF

European Architecture.

PUBLISHED MONTHLY.

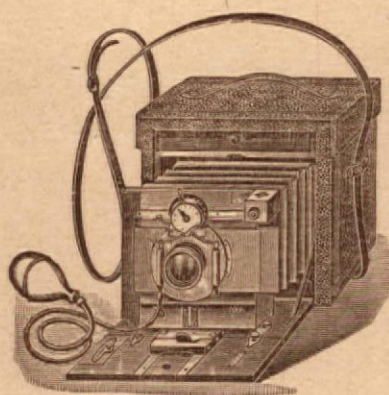
SECOND YEAR—NUMBER. II.

PRICE, \$1.00 PER NUMBER, \$10.00 PER YEAR.

Entered at the Post Office at Chicago as
Second-Class Matter.

COPYRIGHT 1894 BY
OLIVER C. SMITH, ALLYN A. PACKARD,
PUBLISHERS,
801 MEDINAH BUILDING, CHICAGO.

The
Improved
Folding
KODAKS



\$60.00
to
\$100.00

Fitted with Double Swing Back, Rising front and Iris Diaphragm Shutter. Can be used with plates and films, and are adapted to Stereoscopic work.

EASTMAN KODAK CO.,

SEND FOR CATALOGUE.

ROCHESTER, N. Y.

..... CONTENTS

NO. 11. AUGUST, 1894.

- 221. BOURGES—House of Jacques Coeur.
- 222. PARIS—Church of St. Trinity.
- 223. ST. SAVIN—Church of St. Savin.
- 224. CAEN—Church of St. Pierre.
- 225. LISIEUX—Cathedral of St. Pierre.

- 226. COMPIEGNE—Hotel de Ville.
- 227. VARRENGEVILLE—Building adjoining Manor D'Angot.
- 228. CLERMONT—Church of St. Samson.
- 229. TOULOUSE—Cloister of the Augustinian Convent.
- 230. BOURGES—Cathedral of St. Etienne.



DESIGNS FURNISHED AND ESTIMATES GIVEN FOR ALL
KINDS OF ORNAMENTAL WORK.

ORNAMENTAL PATTERNS FOR
METAL CASTINGS.

European Architecture.



PLATE 222.

COPYRIGHT 1894, BY SMITH & PACKARD

PARIS.—FACADE OF CHURCH OF ST. TRINITY.

BUILT BY BALLU, 1861-67.

European Architecture.



PLATE 229.

COPYRIGHT 1894, BY SMITH & PACKARD

ST. SAVIN.—CHURCH OF ST. SAVIN.

A ROMANESQUE CHURCH, WITH THE EXCEPTION OF THE 14TH CENTURY STEEPLE. DATES FROM
11TH AND 12TH CENTURIES.

European Architecture.



PLATE 224.

COPYRIGHT 1894, BY SMITH & PACKARD

CAEN.—CHURCH OF ST. PIERRE.

DATES FROM 13TH TO 16TH CENTURIES. THE TOWER IS 225 FEET HIGH, IS A MASTERPIECE OF THE BOLD AND GRACEFUL STYLE WHICH PREVAILED EARLY IN THE 14TH CENTURY.

European Architecture.



PLATE 225.

COPYRIGHT 1894, BY SMITH & PACKARD

LISIEUX.—CATHEDRAL OF ST. PIERRE.

THE GREATER PART DATES FROM 12TH AND 13TH CENTURIES. THE TOWER WITH SPIRE WAS REBUILT
IN 16TH AND 17TH CENTURIES.

European Architecture.

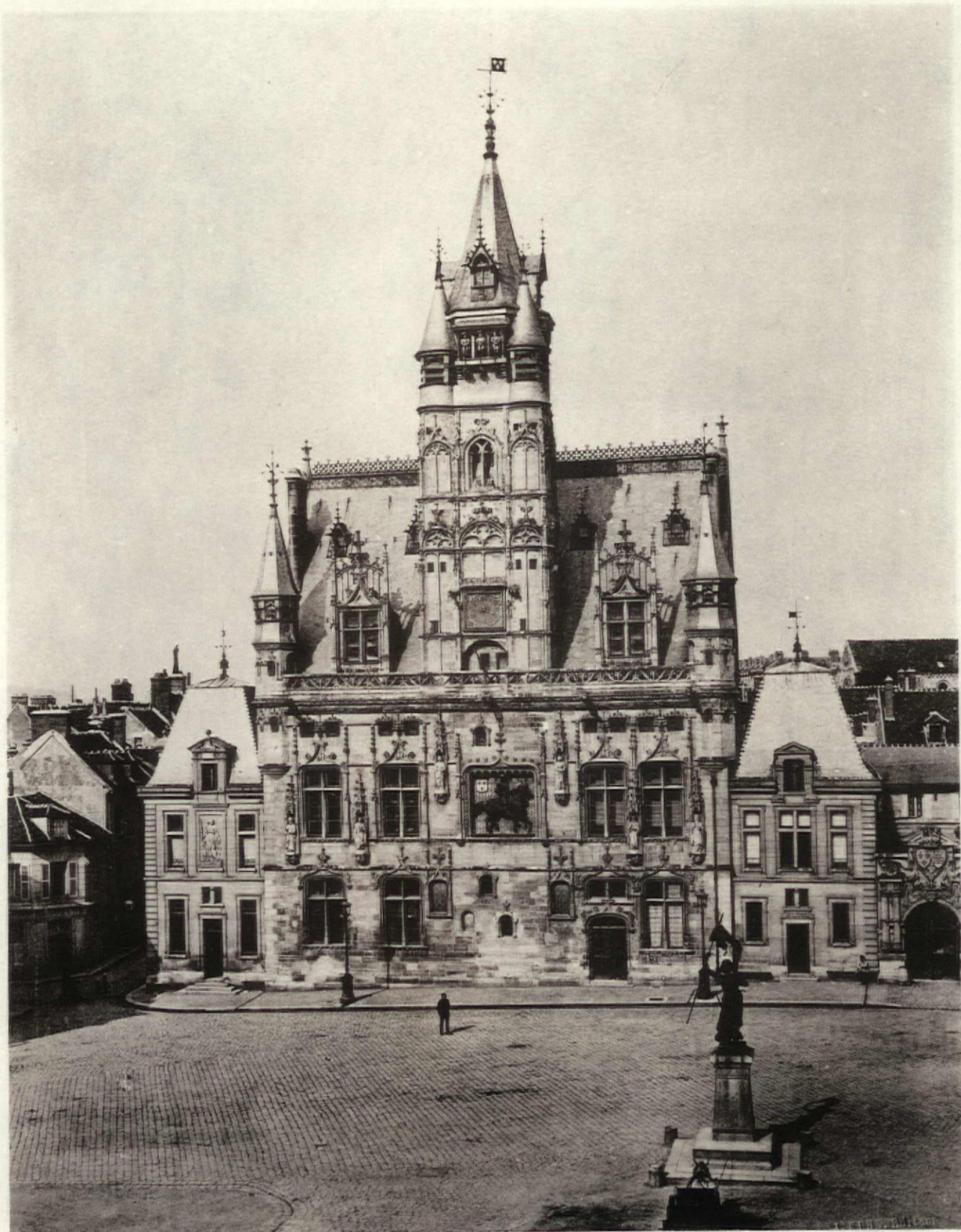
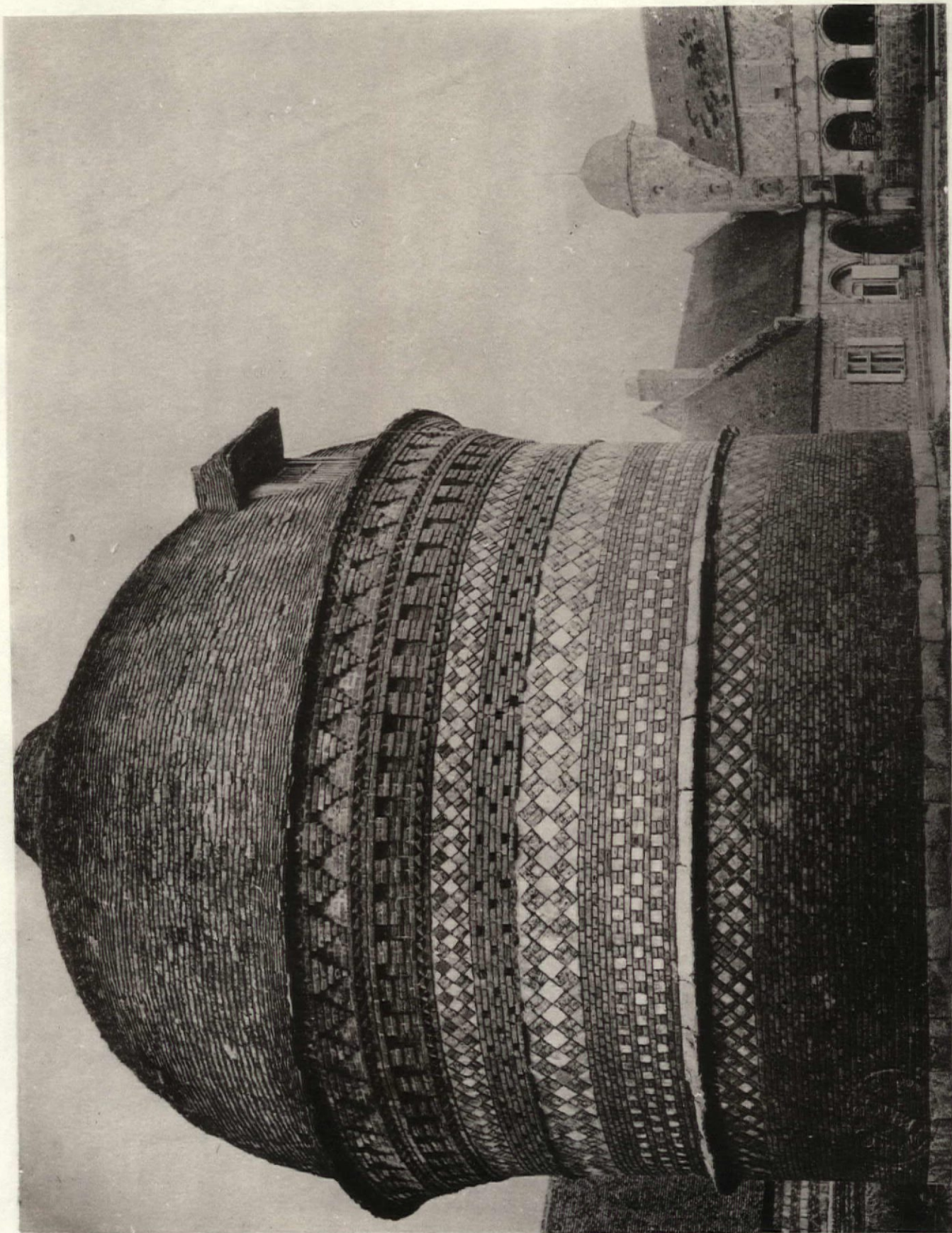


PLATE 226.

COPYRIGHT 1884, BY SMITH & PACKARD

COMPIEGNE.—HOTEL DE VILLE. 16TH CENTURY.
BELFRY 152 FEET HIGH.



COPYRIGHT 1884, BY SMITH & PACKARD.

VARENGEVILLE.—BUILDING BELONGING TO MANOR D'ANGOT.
BUILT IN 16TH CENTURY BY THE MERCHANT PRINCE ANGO OF DIEPPE.

European Architecture.



PLATE 228.

COPYRIGHT 1894, BY SMITH & PACKARD

CLERMONT.—CHURCH OF ST. SAMSON. 14TH CENTURY.

European Architecture.



PLATE 229.

COPYRIGHT 1894, BY SMITH & PACKARD

TOULOUSE.—CLOISTER OF AN AUGUSTINE CONVENT. BUILT IN 14TH CENTURY.
NOW USED AS A MUSEUM. THE TREFOIL ARCHES SUPPORTED BY DOUBLE COLUMNS RECALL THE MOORISH STYLE.

European Architecture.



PLATE 230.

COPYRIGHT 1894, BY SMITH & PACKARD

BOURGES.—CATHEDRAL OF ST. ETIENNE.

THE LARGEST TOWER BUILT BETWEEN 1508—1538 BY PELLEVOISIN. IT IS 199 FEET HIGH, AND IS CALLED THE TOUR DE BEURRE, BECAUSE BUILT WITH THE MONEY RAISED FROM INDULGENCES TO EAT BUTTER IN LENT.

ARTISTIC WOOD MANTELS

OF 100 DIFFERENT DESIGNS AT ALL PRICES
ARE MANUFACTURED BY THE

INTERIOR WOODWORKING CO.

307 WABASH AVE. CHICAGO.

CONTRACTORS FOR SPECIAL FURNITURE
AND INTERIOR FINISH ~
ARTISTIC FIREPLACE FURNISHINGS
AND TILE WORK OF ALL KINDS ~

CHICAGO HARDWARE MFG. CO.

.. Manufacturers of ..

'CHICAGO' CYLINDER LOCKS

The Largest Assortment of

Artistic Hardware



OFFICES:

NEW YORK. PITTSBURG.

CHICAGO:

421 CHAMBER OF COMMERCE BUILDING.

NOTE.—Special work correctly executed. All locks and knobs made under the Niles's Patent.



A·H·ANDREWS & Co.
 15-221 WABASH AVE. CHICAGO ESTABLISHED 1865
BANK OFFICE AND COURT-HOUSE FURNITURE
 OPERA & CHURCH CHAIRS
 ANDREWS METAL CHAIRS OFFICE DESKS & SCREENS
 CHEAPEST CHAIR MADE BRASS, IRON
 NICKEL, OLD COPPER AND WIRE WORK
 AND BRASS FINISH INTERIOR WOOD WORK
 FOLDING BEDS.

SIX AWARDS
 WORLD'S
 COLUMBIAN EXPOSITION

- 1 BANK FIXTURES & METAL WORK
- 2 OFFICE DESKS & FITTINGS
- 3 FOLDING BEDS
- 4 OPERA CHAIRS
- 5 METAL (STEEL) CHAIRS
- 6 LUMBER DRY KILNS





A MAORI CANNIBAL FROM THE GUM FIELDS
 OF NEW ZEALAND.

CHICAGO VARNISH Co.

MANUFACTURERS OF
 HIGHEST GRADES OF
 ARCHITECTURAL
 FINISHES.

CHICAGO · NEW YORK ·
 PHILADELPHIA · BOSTON ·

FLANAGAN AND BIEDENWEG
 ARTISTS IN STAINED GLASS
 POSITIVELY MANUFACTURED IN EVERY BRANCH
 HENDERSON'S PATENT COPPER METALLIC SASH

OFFICE & FACTORY
 57-59 ILLINOIS ST.
 TELEPHONE NORTH 218

SHOW ROOMS
 442-462 WABASH AV.
 CHICAGO

DESIGNS FURNISHED IN ALL
 THE CLASSIC STYLES

