

VOL. VI.

AUGUST, 1898.

NO. 11.

EVROPEAN ARCHITECTVRE

ISSUED MONTHLY.
PRICE \$10.00 PER YEAR.



PVBLISHE D BY
SMITH & PACKARD.
1548 MARQUETTE BLDG.
CHICAGO.

European Architecture.

AN ILLUSTRATED MONTHLY MAGAZINE, DEVOTED TO THE INTERESTS OF ART AND ARCHITECTURE.

PUBLISHED THE FIRST OF EVERY MONTH
...BY...

SMITH & PACKARD

1548 Marquette Building - - - - - Chicago.

Subscription, \$10.00 Yearly, in advance; \$1.00 a Copy.

Entered at the Post Office at Chicago as second-class matter.

TABLE OF CONTENTS

- 701. Toulouse—Detail Hotel du Vieux Raisin.
- 702. Toulouse—Entrance Court of the Lyceum.
- 703. Toulouse—Detail in Court of the Lyceum.
- 704. Josselin—Detail of Chateau.
- 705. Josselin—Detail of Dormer of Chateau.
- 706. Josselin—Dining Hall of Chateau.
- 707. Dijon—Tower of the Bar.
- 708. Dijon—Stairway of Tower of the Bar.
- 709. Cherbourg—Entrance Gate Chateau de Nacqueville.
- 710. St. Pol de Leon—Facade of Chateau.

No Camera is a

“KODAK”

Unless manufactured by the Eastman Kodak Company.



“You press the button
We do the rest.”



Eastman
Kodak
Co...

ROCHESTER, N. Y.



European Architecture.



PLATE NO. 701—AUGUST, '98.

SMITH & PACKARD, PUBLISHERS. CHICAGO.

TOULOUSE—DETAIL OF WINDOWS OF THE HOTEL DU VIEUX RAISIN.

European Architecture.

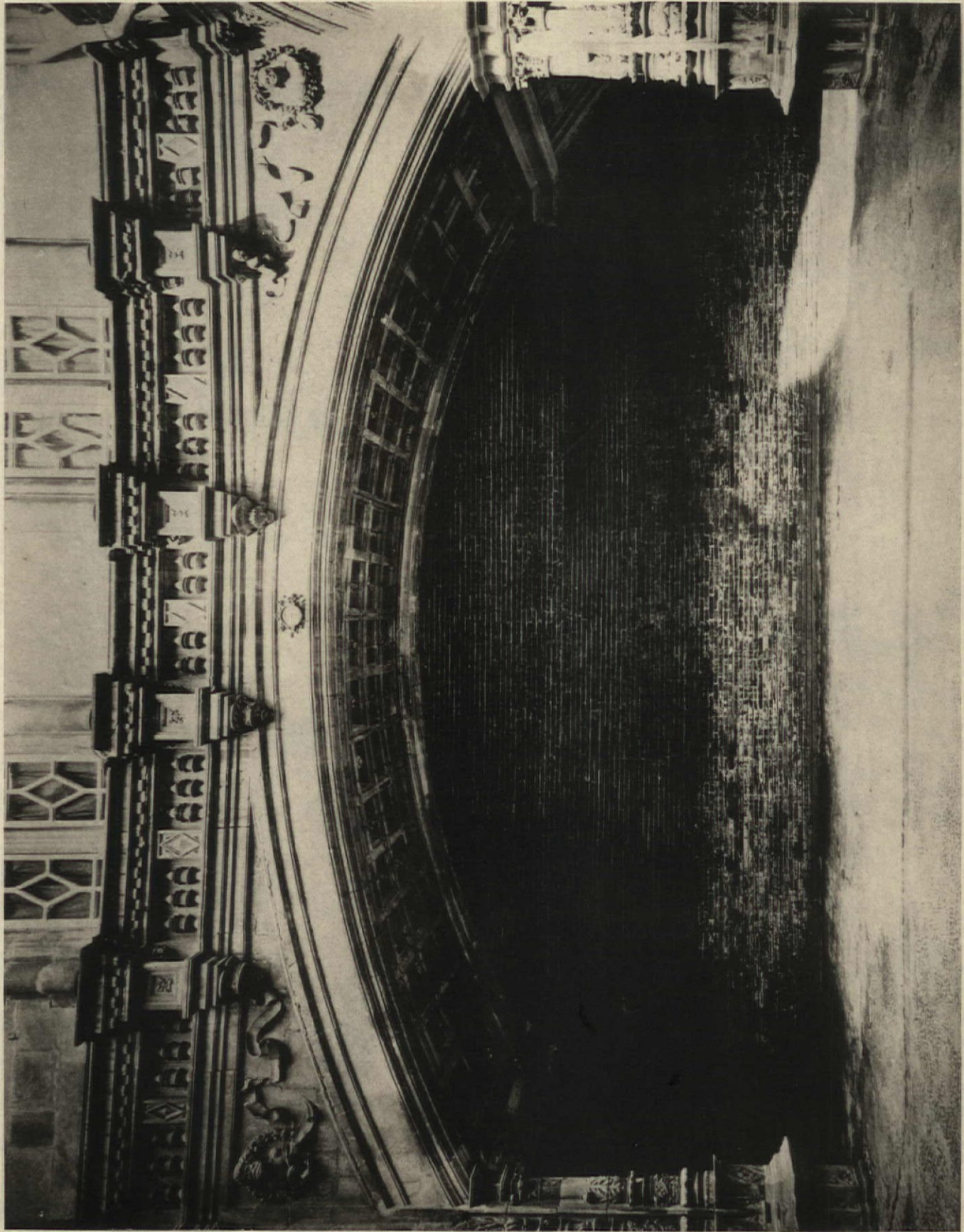


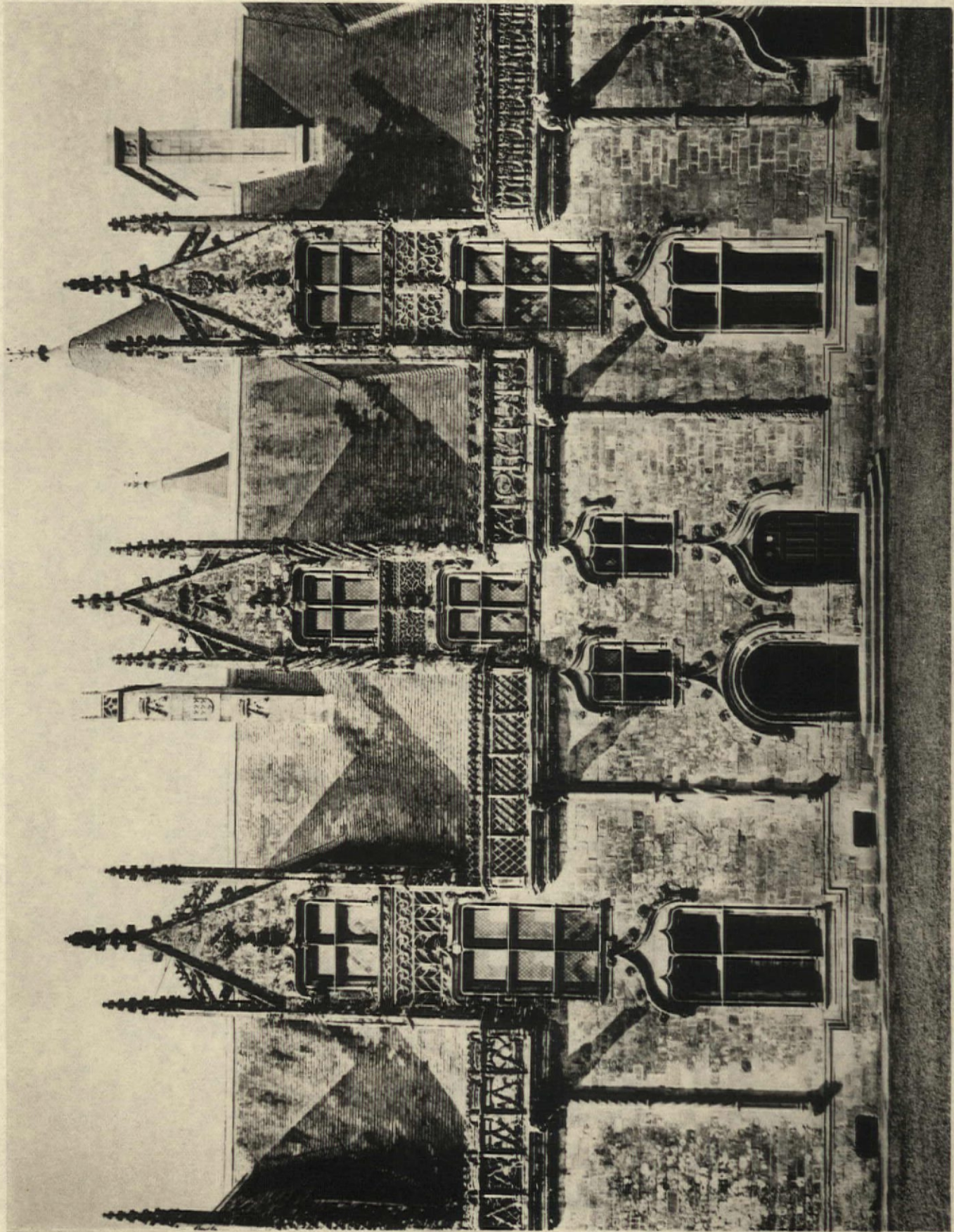
PLATE NO. 702—AUGUST, '98.

SMITH & PACKARD, PUBLISHERS. CHICAGO.

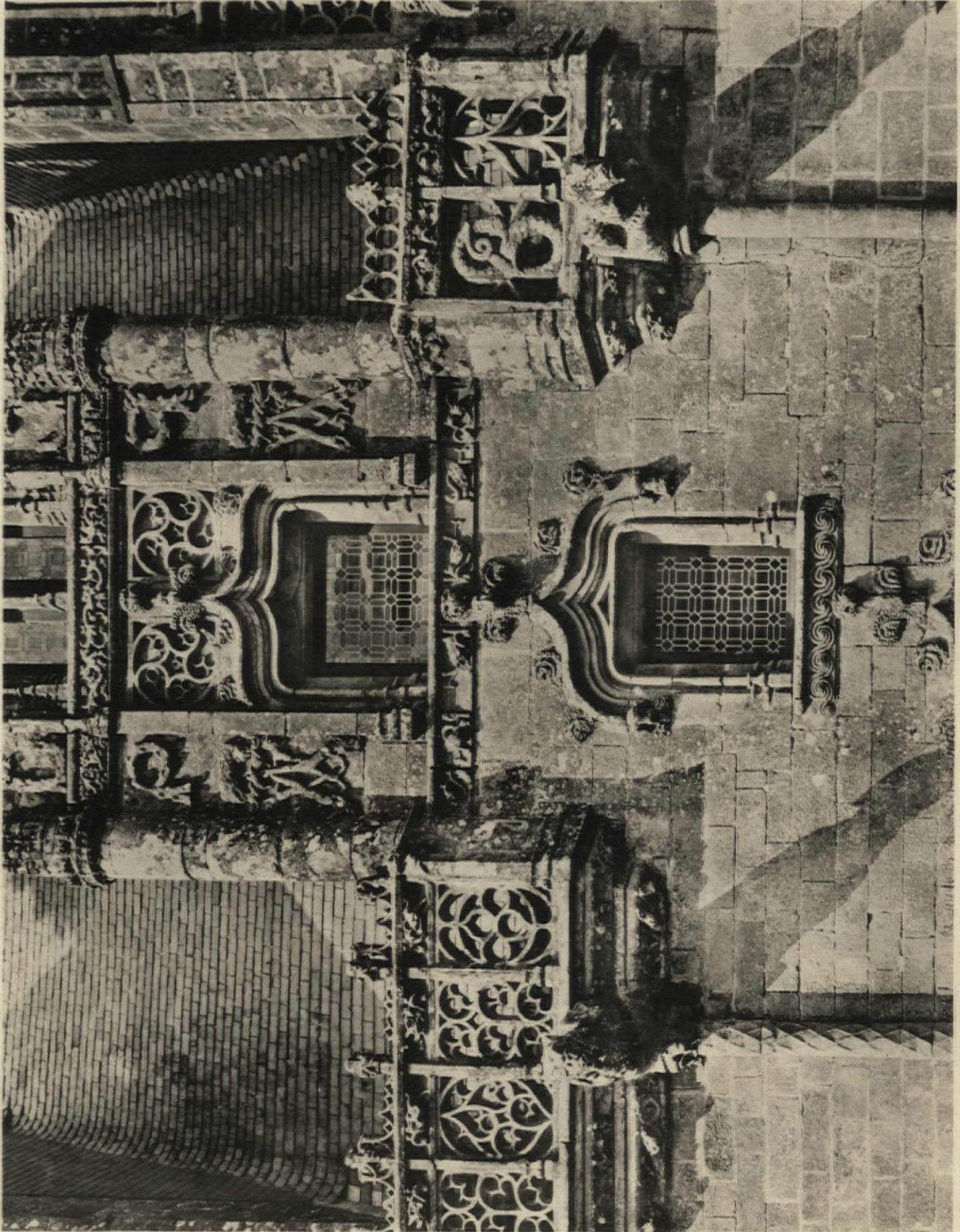
TOULOUSE—ENTRANCE TO THE COURT OF THE LYCEUM.

ORIGINALLY THIS BUILDING WAS THE HOUSE OF BERNUY, A SPANISH MERCHANT. PART OF IT IS NOW
OCCUPIED AS A PUBLIC LIBRARY.





JOSSÉLIN—DETAIL OF CHATEAU DE JOSSÉLIN.
REMARKABLE FOR ITS IRREGULAR BUT PICTURESQUE GOTHIC OF THE XVITH CENTURY.



SMITH & PACKARD, PUBLISHERS, CHICAGO

JOSSELIN—DETAIL OF DORMER AND PARAPET

PLATE 705—AUGUST 98



PLATE 706—AUGUST 98

JOSSELIN—INTERIOR OF DINING HALL OF THE CHATEAU.

THE STONE CARVING "ALAIN," OVER THE MANTEL, REFERS TO ALAIN VIII, VISCOMTE DE JOSSELIN, THE ORIGINAL BUILDER OF THE CASTLE.

SMITH & PACKARD, PUBLISHERS, CHICAGO

European Architecture.

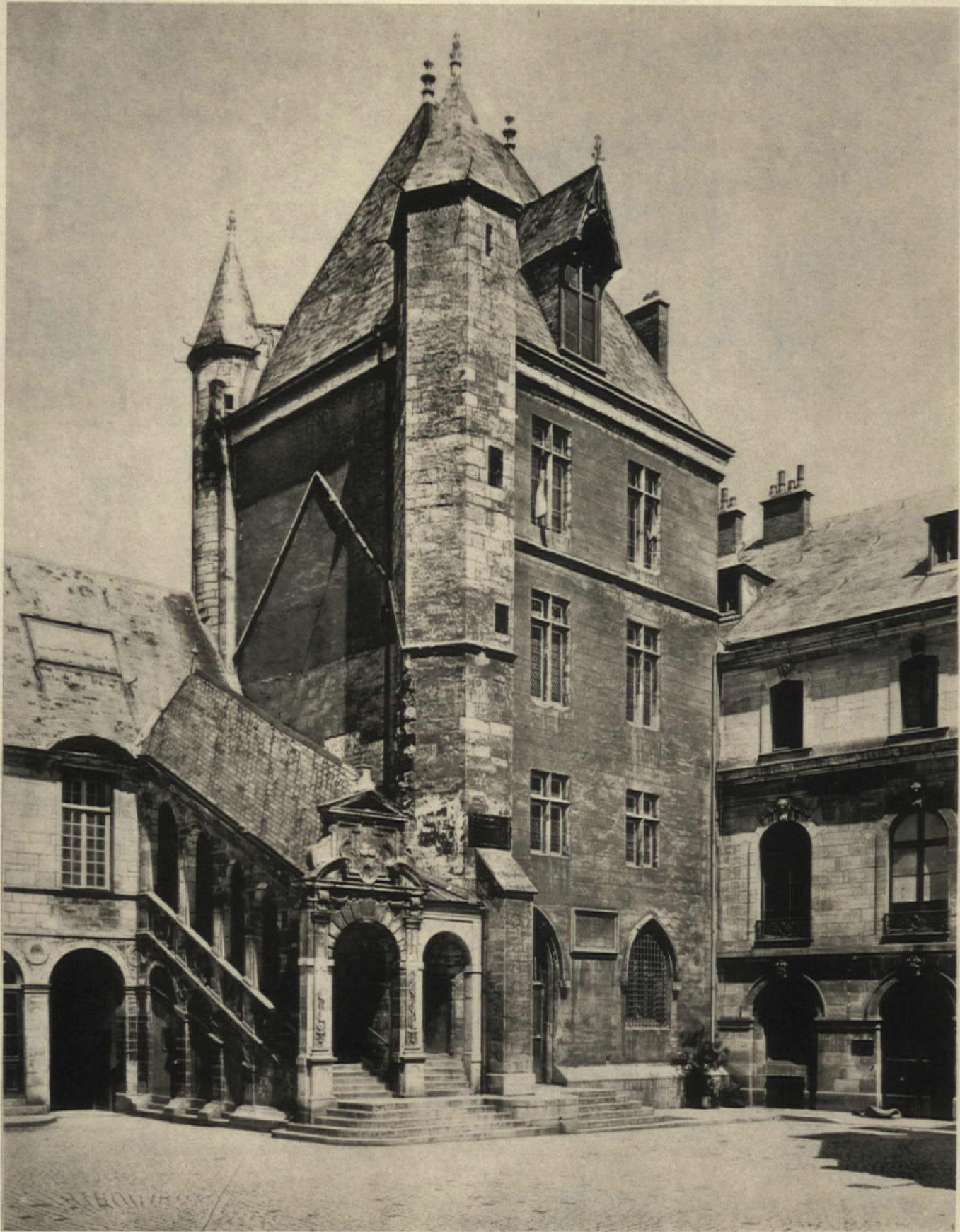
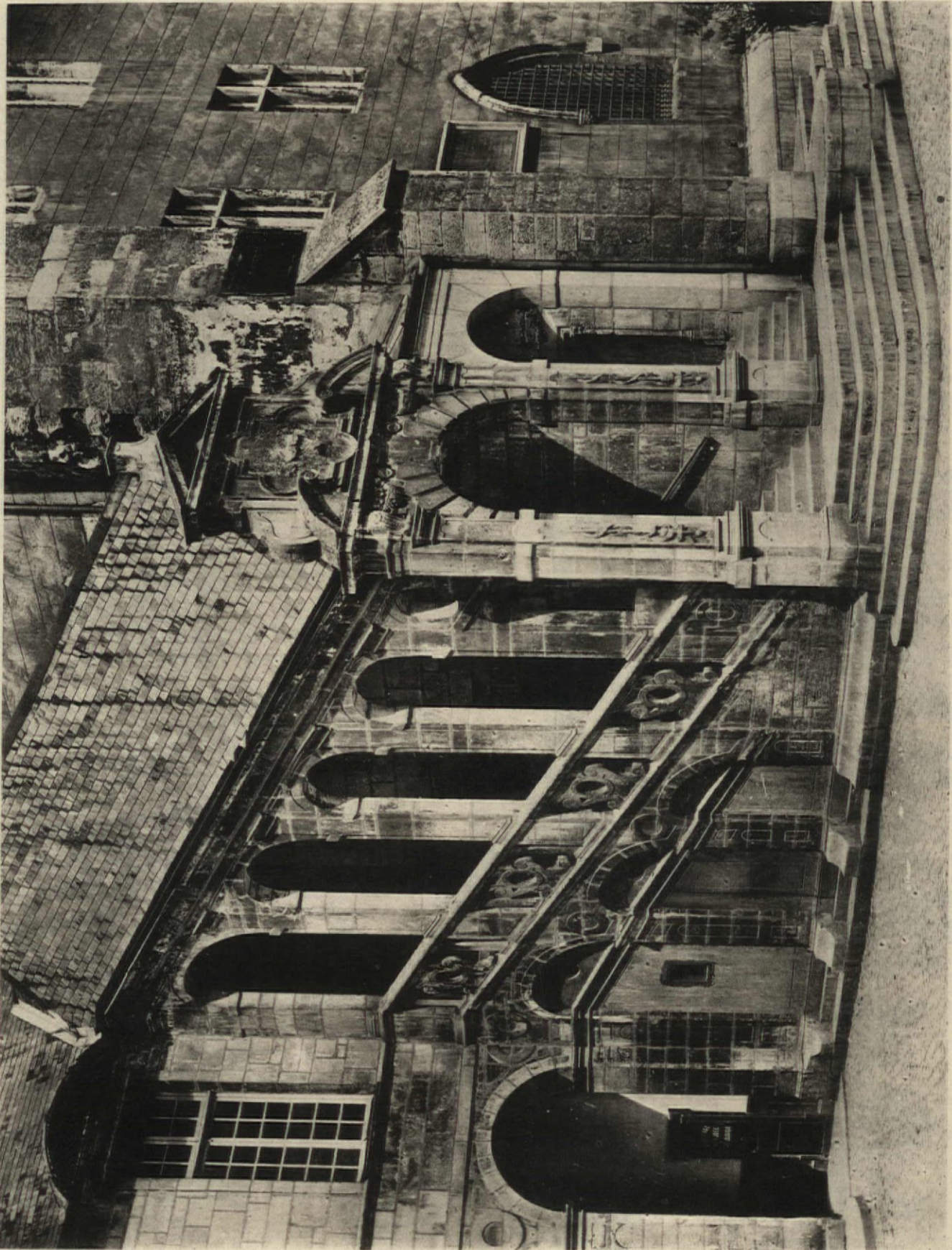


PLATE NO. 707—AUGUST, '98.

SMITH & PACKARD, PUBLISHERS. CHICAGO.

DIJON—TOWER OF THE BAR.

European Architecture.



SMITH & PACKARD, PUBLISHERS, CHICAGO

DIJON—DETAIL OF STAIRWAY, TOWER OF THE BAR.

European Architecture.



PLATE NO. 709—AUGUST, '98.

SMITH & PACKARD, PUBLISHERS. CHICAGO.

CHERBOURG—ENTRANCE GATE TO THE CHATEAU DE NACQUEVILLE.
FORMERLY THE RESIDENCE OF THE COUNT DE TOCQUEVILLE, THE AUTHOR.

European Architecture.

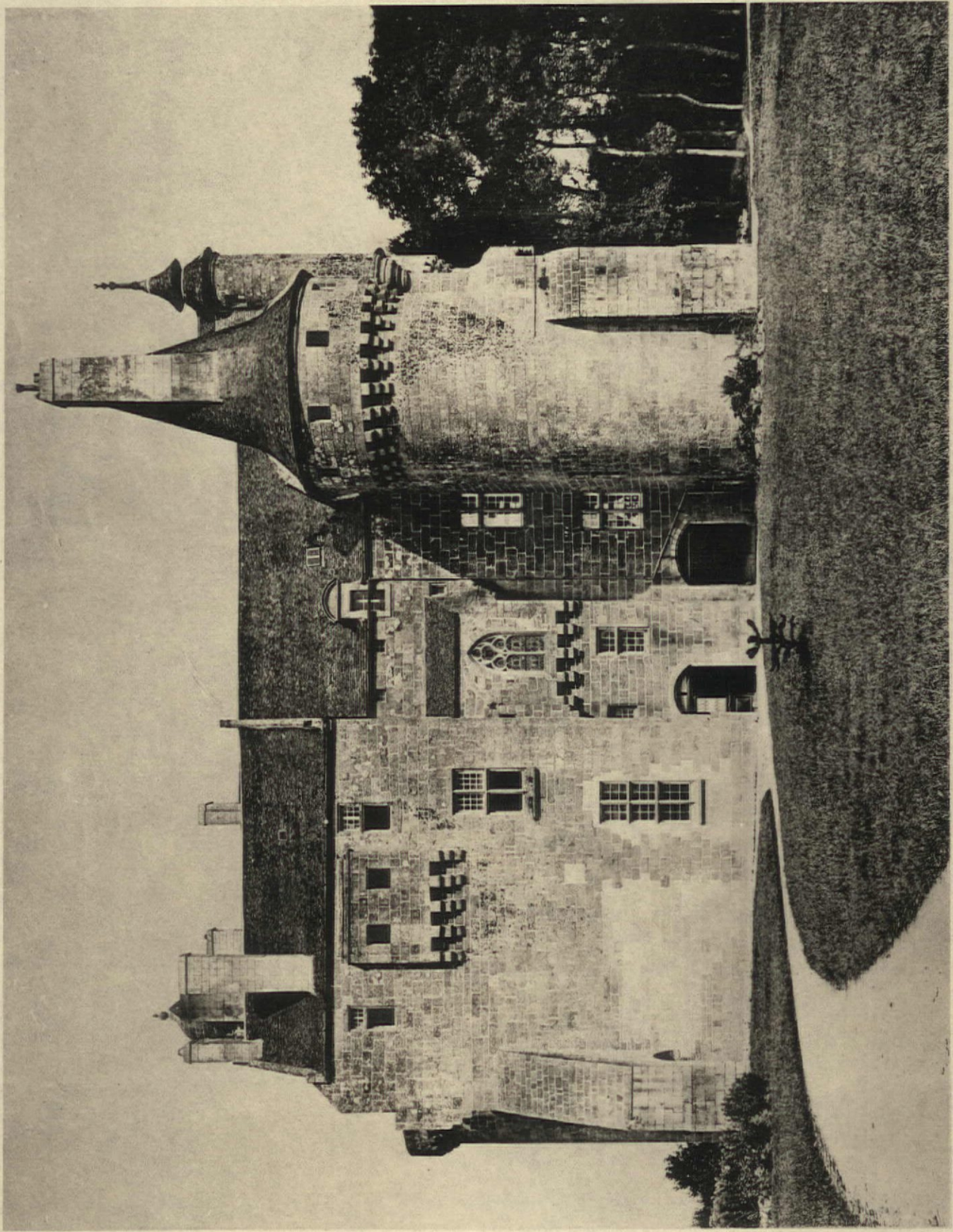


PLATE 710—AUGUST '96

ST. POL DE LEON—FACADE OF THE CHATEAU.

SMITH & PACKARD, PUBLISHERS, CHICAGO



Back Volumes

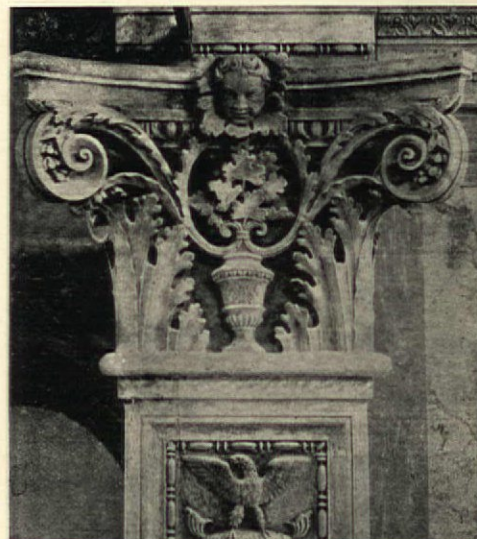
Can be supplied at the following prices :

- Vol. I, October 1892-93....\$12.00
- Vol. II, October 1893-94.... 10.00
- Vol. III, October 1894-95.... 10.00
- Vol. IV, October 1895-96.... 10.00
- Vol. V, October 1896-97.... 10.00

Complete Set of the Five Volumes,

\$50.00.

THE SINNBERG PHOTO-GRAVURE AND PRINTING CO.
COMMERCIAL ART & Photo-Gravure Printers.
CAXTON BUILDING
328-334 Dearborn St. CHICAGO.



HALF-TONE ILLUSTRATION FROM VOL. I
EUROPEAN ARCHITECTURE.



BUILDING AT CHICAGO. (ERECTED 1895)

THE HIGHEST GRADES
OF
ARCHITECTURAL
FINISHES

MANUFACTURED BY

CHICAGO VARNISH CO.

CHICAGO NEW YORK BOSTON

Established 1865

ANTIQUE
FURNITURE

A series of 28 photogravure plates, comprising CHAIRS,
TABLES, CABINETS and CHESTS, from the
MUSEUMS IN EUROPE. Plate 9 x 11. Price
reduced to \$2.00. Sent postpaid to any address.

SMITH & PACKARD, Publishers, Marquette Building, CHICAGO

