

**From:** North Carolina Modernist Houses <george=ncmodernist.org@mail188.atl81.rsgsv.net> on behalf of North Carolina Modernist Houses <george@ncmodernist.org>  
**Sent:** Monday, September 15, 2014 8:30 AM  
**To:** george@ncmodernist.org  
**Subject:** Gallery C T4A / T4A's Go Year-Round / Cherry-Gordon Ruling

*Architecture you LOVE*

Is this email not displaying correctly?  
[View it in your browser.](#)

Monday, Sept 15, 2014

[Facebook](#) \* [Twitter](#) \* [YouTube](#) \* [Vimeo](#) \* [Pinterest](#)



---

## THE NEWS

---



["Like" Us](#)

**Thirst4Architecture** is going year-round, not just spring through fall! Look for exciting parties every month bringing the design community together in great venues all around the Triangle!

A John Ramsay house gets a new door. Hat tip to **Virginia Faust**.

The Cliff House. Hat tip to **Dale Briggs**.



As reported here last week, **Louis Cherry and Marsha Gordon** won against the **Wiesners** regarding the Oakwood house. A ruling was announced and the formal document should be available soon. Is this long nasty crusade over for Raleigh, for Oakwood, for the vindicated Raleigh Historic Development Commission, and for homeowners Louis

and Marsha?

No. **Gail Wiesner** has announced her intent to take the case up to the NC Court of Appeals. A case, by the way, in which she was just ruled to have no legal standing. Sweet.

Wiesner has already bullied Cherry/Gordon to the tune of over \$50,000 in legal fees and construction delays. Add to this the cost to the taxpayers of Raleigh, who had to fund a City attorney's involvement.

It is time to bring healing and harmony back to Oakwood and move on. The announced ruling was definitive. RHDC right, BOA wrong. Will the Wiesners be remembered for yet another courtroom case which could take many more months -- or will they stand for a more harmonious community? The majority of the community certainly supports and even embraces the Cherry/Gordon house:



[Tweet Us](#)



[Share Us](#)



Modernist Houses For

Sale or Rent. Keeping

Modernist houses

occupied is the best way

to save them! Check

this exclusive statewide

list.

## Living History, Living Raleigh

The construction of the home at 516 Euclid has set off debate about the decisions of the Raleigh Historic Development Commission and the content of the guidelines the Commission is tasked with enforcing. The City is currently updating those guidelines, a process that will include one or more public hearings this fall.

Many residents of Historic Oakwood and other historic districts believe that historic structures should be protected but that these neighborhoods should not be frozen in time. They believe that contemporary infill, thoughtfully regulated by the Raleigh Historic Development Commission (RHDC), can be compatible with the historic character of our local historic neighborhoods. These districts reflect a continuous and continuing thread of time. The present generations' contribution, both infill and additions, should reflect their own times, while remaining compatible with, but not imitating, the truly old buildings.

As residents of Historic Oakwood, we support this view. And we support the RHDC decision approving the construction of the Louis Cherry-Marsha Gordon House at 516 Euclid Street. Oakwood is not frozen in time as is Colonial Williamsburg. Rather Historic Oakwood is historically unique because of its diversity. This diversity is the very thing that enhances the value of homes and the quality of life in our Oakwood neighborhood.

We welcome the opportunity to revisit the RHDC and Board of Adjustment process and guidelines exploring alternatives for how they may provide greater clarity to homeowners, builders and members of the Commission while maintaining aspects of the guidelines that allow flexibility. This City review should also examine how the guidelines can most effectively discourage the tear down of both contributing and non-contributing structures in a historic district. A related issue is whether additional homes now 50 years or older should be designated as contributing structures in an historic district. The original 1970s survey in Historic Oakwood excluded homes then less than 50 years old which themselves are part of the story of the development of Raleigh's first suburb.

Mary Dillon  
Curtis Kasefang  
Bob Tomb  
Jim Melo  
Barbara Wishy  
Grayson Currin  
Kay Coleman  
Toni Sutphin  
Molly Feichter  
D. Eagle White, III  
Ann Franklin  
Sue Rudkin  
Laura Jackson  
Lou Pascucci  
John Dancy-Jones  
Linda Tripp-Corbin  
Aranzazu Lascurain  
Gene Conti  
Lisa Finaldi  
Sabra Taylor

Hugh Stohler  
Sharon O'Neill  
Norma Tomb  
Meghan Melo  
Peter Rumsey  
Tina Currin  
Ed Coleman  
Will Sutphin  
Will Feichter  
Bonnie McCreary  
Joshua Franklin  
Mike Rudkin  
Jim Biddell  
Sarah Pascucci  
Cara Dancy-Jones  
Richard Kaznicki  
Matthew Booker  
Betsy Conti  
Brian Starkey  
John Clay

Jerry Blow  
Sheila Duncan  
Kristopher Nordstrom  
Madonna Phillips  
Julie Snee  
Debra Smith  
Donald Mertrud  
Katherine White  
Heather Hesketh  
Hélène Crié-Wiesner  
Imogen Hoyle  
Don Hobart  
Coleen Speaks  
Greg Colvin  
Heidi Walters  
Chris Gotwalt  
Trish Healy  
Dan Gaugert  
Susan Iddings

Leigh Blow  
George Duncan  
Kate Bronstein  
Greg Hallam  
Andrew Snee  
Bob Rose  
Michiel Doorn  
Thomas Urquhart  
Steve Champeon  
Win Coleman  
Crosby Franklin  
Kay Hobart  
Nick Speaks  
Lisa Ogburn  
Chris Mackey  
Jessica Gotwalt  
John Healy  
Terry Harper  
Rob Hale



**PALETTE  
PARLOR**

Authentic modern furniture to  
cherish and enjoy.



Authorized dealer for Knoll, Vitra,  
Fritz Hansen, Carl Hansen & Son

Visit us at East54 Chapel Hill  
[www.paletteandparlor.com](http://www.paletteandparlor.com)

**Dead Mod Walking:** Please help us watch for when **Milton Small's 3515**

**Glenwood building** receives the demolition permit. You can monitor City permits [here](#).

→ **SEP 3 KAI-UWE BERGMANN** AIA, RIBA

Live-stream in KAM 130 and other locations, 1:00pm

PARTNER, BJARKE INGELS GROUP (BIG), NEW YORK

→ **SEP 3 SHOHEI SHIGEMATSU**

Live-stream in Burns Auditorium, 5:30pm

PARTNER & DIRECTOR, OMA, NEW YORK

→ **OCT 13 DR. VIKRAMĀDITYA PRAKĀSH** ASSOC. AIA

Burns Auditorium, 6:00pm

PROFESSOR OF ARCHITECTURE, LANDSCAPE ARCHITECTURE, AND URBAN DESIGN AND PLANNING. DIRECTOR, CHANDIGARH URBAN LAB, UNIV. OF WASHINGTON

→ **OCT 27 JEFFREY INABA** ASSOC. AIA

Burns Auditorium, 6:00pm

PRINCIPAL, INABA ARCHITECTS; DIRECTOR, C-LAB AND PROFESSOR OF ARCHITECTURE, COLUMBIA UNIVERSITY

→ **NOV 10 DIVERSITY AND DIFFERENCE IN THEORY AND PRACTICE**

Here's the fall schedule for the NCSU/AIA Triangle Lecture Series at the College of Design. Hat tip to **Burdak Erdim**.

This is a story [about a Lustron](#). In 2008 it was partially reassembled for a MOMA exhibit. In 2011 it was on its way to Columbus OH, having been donated by Arlington County to them; [the exhibit opened](#) about a year ago and will be there for 5 years total. Hat tip to **Virginia Faust**, the Triangle's most dedicated Lustron preserver.

---

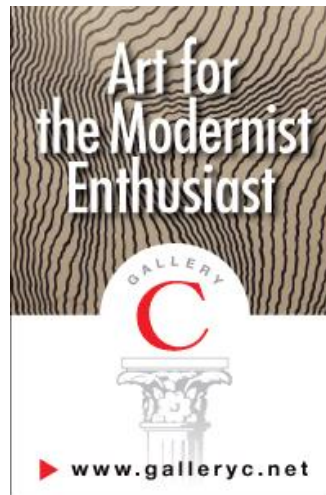
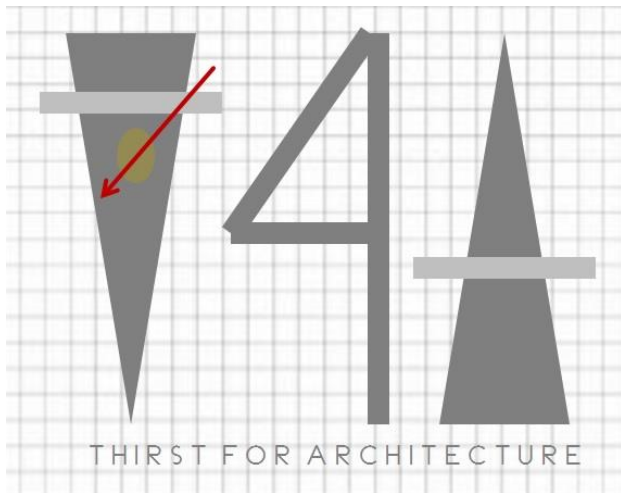
U P C O M I N G

---

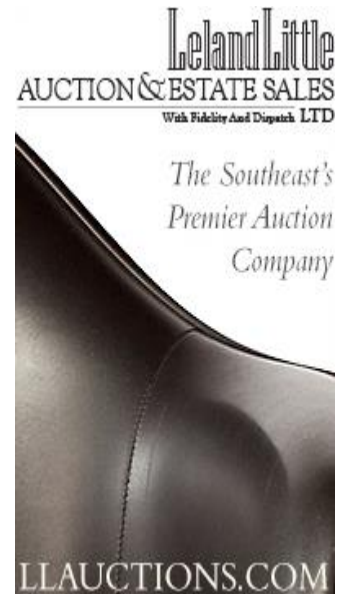


Fine Mid Century and Danish Modern Furniture Store in Charlotte. Phone Orders Welcome, Shipping Available

Anywhere!



2014 Thirst4Architecture (T4A) Networking Happy Hours are  
Powered by Emilie Huin, 501 Realty.



Next T4A: This Thursday, September 18, 6-8pm, 540 North Blount Street, Raleigh. Join **Charlene Newsom, Sharon Glazener**, and the staff of **Gallery C** in downtown Raleigh (just a block from the AIA North Carolina building). Featuring a talk about mid-century Modern North Carolina artists and a special painting by Claude Howell.



Saturday, September 20. This past summer, NCSU's School of Architecture Summer Design/Build Program joined hands with Benevolence Farm to design and build a vegetable wash barn. As the inaugural new structure on the recently acquired land, the Benevolence Farm envisioned an iconic and spiritually uplifting building that would capture the essence of rural North Carolina vernacular architecture. The simple wood framed structure was designed to maximize natural light, provide a generous covered work area, house tool storage, dry food storage, and climate controlled cool storage. The open plan is intended for multiple work, gathering, and entertaining uses. The recently completed project is

---

beautifully detailed, open, airy, comfortable, and inviting. The team from Benevolence Farm and NC State look forward to many years of work, play, growth, and nourishment in the Benevolence Barn. To assist with construction costs there will a great fundraising event at 18 Seaboard Saturday, September 20th.

---



## TWO FALL COMMUNITY CONVERSATIONS

SAVE THE DATE

MON | September 22 | 6PM - 8:30PM

Raleigh Convention Center, 500 S. Salisbury Street, Raleigh

### Design Guidelines for Raleigh Historic Districts: New Construction and Additions

Please join the City in a facilitated discussion regarding the Design Guidelines for Raleigh Historic Districts and New Construction and Additions. Headliners include:



**Pratt Cassity**, Director of the Center for Community Design and Preservation at the University of Georgia, and trainer for the National Alliance of Preservation Commissions (NAPC).



**Jo Leimenstoll**, faculty in the Department of Interior Architecture at the University of North Carolina at Greensboro, and author of the Design Guidelines for Raleigh Historic Districts.

At this meeting, Ms. Leimenstoll will receive and evaluate the community's input for the preparation of recommendations on updates to the Additions and New Construction sections of the Design Guidelines.

MON | October 20 | 6PM - 8:45PM

Duke Energy Center for the Performing Arts, 2 E. South Street, Meymandi Lobby

Please join the City for a follow-up Conversation at which Ms. Leimenstoll will present her recommendations.

Visit [www.rhdc.org/DG-2014](http://www.rhdc.org/DG-2014) for more information.

RHDC.ORG



The **NCMH MODTriangle Architecture Movie**

**Series** opens at 730pm on Wednesday, October 1. The movie is **Fully Awake: Black Mountain College**. Introducing the movie is **Bauhaus in America** author and NCSU Adjunct Assistant Professor of Architecture **Margret Kentgens-Craig**. \$10 per person, Mod Squad members are free. But -- there are only 100 seats, so get there early. [Movie details, dates, and trailers.](#)



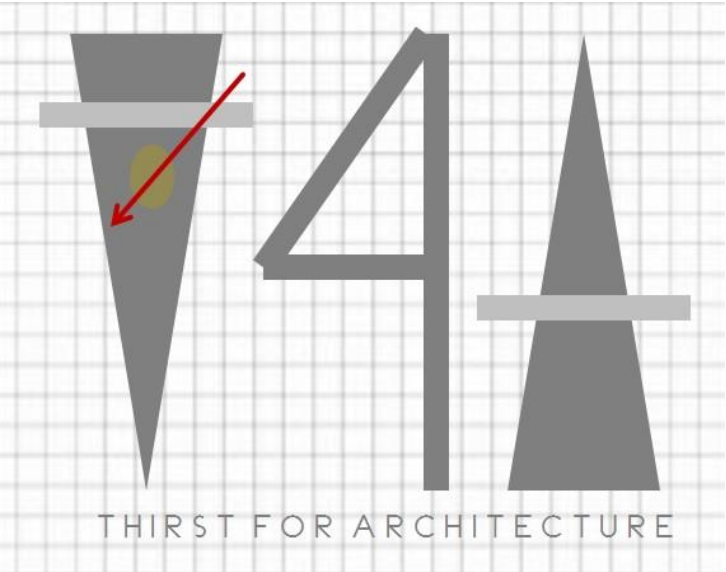
Join AIA North Carolina's **Activate 14** [pig-pickin fundraiser](#) on Sunday October 5.

---

Saturday, October 11, 9am-6pm. **AIA Triangle** hosts the **AIA Triangle Residential Architecture Tour**, featuring nine homes on the self-guided tour. Purchase tickets, begin at the residence of your choice, and tour at your leisure. The architects and docents will be available to answer questions. More [here](#).

---





2014 Thirst4Architecture (T4A) Networking Happy Hours are powered by Emilie Huin, 501 Realty.



Thirst4Architecture outdoors! Thursday, October 16, 6-8pm, 1671 Gold Star Drive,

in Raleigh (near the fairgrounds). Join **Frank Harmon** and his staff for a fabulous fall evening at the **Prairie Ridge Ecostation** designed by Harmon's firm.

---

# HOUSE ALERTS

---

There are five NC houses on the [Endangered List](#). Scroll down the page and look on the left.

Help spread the word!



*Copyright © \*2014\* \*Triangle Modernist Archive, Inc., a nonprofit  
501C3 educational archive dba North Carolina Modernist Houses\*, All  
rights reserved.*

[unsubscribe from this list](#) | [update subscription preferences](#)

---

No virus found in this message.  
Checked by AVG - [www.avg.com](http://www.avg.com)  
Version: 2014.0.4259 / Virus Database: 4015/8231 - Release Date: 09/17/14