

EDITORS' CHOICE: The Best New Products for the Sizzle Season

# Metropolitan Home<sup>®</sup>

## COOL SUMMER STYLE

Great New Houses That Bring the Outdoors In



*In Puerto Rico a modern getaway opens its wings to the view, p.72.*

JULY/AUGUST 2009  
WWW.METHOME.COM

#####CARG-RT LOT\*\*C-031  
#BXBCDR \*\*\*\*\*  
#020100003592730# 0906 MAY12 MET9  
GRAHAM MILLINGTON  
APT 3  
1130 N FULLER AVE  
W HOLLYWOOD CA 90046-5728  
033651



CASE STUDY BEDS  
AND DAYBEDS

**MODERNICA®**



The Original Case Study® Bed  
Handcrafted in Los Angeles. Accept no substitutes. [modernica.net](http://modernica.net)



Catella



Overleaf



Tracery



Sellarsbrook Blue



Mums & Asters



Adventure



Marinsky



Madelaine

**THE RUG COMPANY**  
HANDMADE

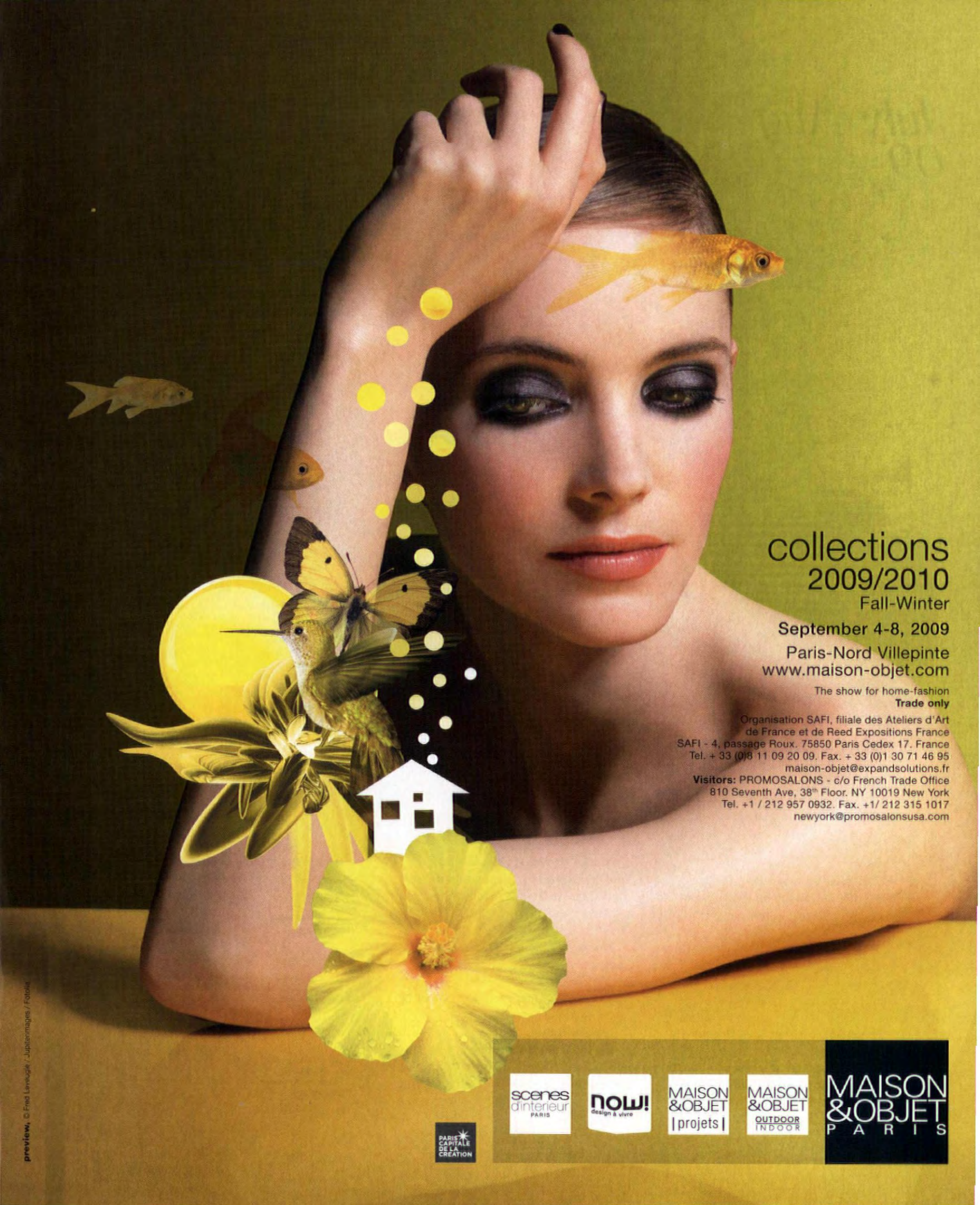
LONDON NEW YORK  
LOS ANGELES MIAMI

1.800.975.8514

[www.therugcompany.info](http://www.therugcompany.info)



Sellarsbrook Yellow



# collections 2009/2010

Fall-Winter

September 4-8, 2009

Paris-Nord Villepinte  
[www.maison-objet.com](http://www.maison-objet.com)

The show for home-fashion  
**Trade only**

Organisation SAFI, filiale des Ateliers d'Art  
de France et de Reed Expositions France  
SAFI - 4, passage Roux. 75850 Paris Cedex 17. France  
Tel. + 33 (0)8 11 09 20 09. Fax. + 33 (0)1 30 71 46 95  
[maison-objet@expandsolutions.fr](mailto:maison-objet@expandsolutions.fr)

Visitors: PROMOSALONS - c/o French Trade Office  
810 Seventh Ave, 38<sup>th</sup> Floor. NY 10019 New York  
Tel. +1 / 212 957 0932. Fax. +1 / 212 315 1017  
[newyork@promosalonsusa.com](mailto:newyork@promosalonsusa.com)

preview, © Fred Lerevige / Japlanimages / Fotolia



July/Aug  
09

The laminated-wood *Earth-Pinstripe* "fruit bowl" has numerous uses and can be customized to your own neighborhood thanks to Google Map technology (about \$320; Fluid-Forms.com). For additional terrain-inspired items, including the white bowl in the photo, see "Trend Watch," p. 104.

104

Metropolitan Home VOLUME 41 | ISSUE NO. 6

**21 Word**

From a dazzling chandelier to the first Missoni hotel, all the news you need about design, travel, shopping and more.

**28 How We Live: The New Village Green**

*By Karrie Jacobs*

Government incentives fuel sustainable subdivisions from coast to coast.

**32 Small Spaces: Tentative Occupancy**

*By Fred Albert*

A California couple pitched a unique tent compound to use while building their house but aren't about to strike camp.

**36 Editors' Choice: Summer Bliss**

These new outdoor furnishings are so appealing you'll want to move them inside when you put the white shoes away.

**42 Weekend Kitchen: Pick-Up Sticks**

*By Donna Paul*

Savory breadsticks by renowned Boston chef Lydia Shire are great for a snack at any time of the day.

**48 Big Idea: Shelf-Contained**

*By Flannery Hoard*

Atlanta designer Jill VanTosh turned an unused closet into chic display space.

**104 Trend Watch: Well Grounded**

Topographical maps have inspired a whole new world of home designs.

Editor's Page 16 Inbox 18 Resources 100

**On the Cover**

Fabric designer Donna Gorman chose architect John Hix to design her family's Puerto Rican getaway. Produced by Linda O'Keeffe. Photograph by Peter Murdock. See Resources, last pages.

**Subscriptions**

For information, call 850/682-7654; fax 641/842-6101. To order a new subscription, to make address changes or to report a subscription problem, go to [www.methome.com](http://www.methome.com).





© 2009 Masco Retail Cabinet Group

A KraftMaid kitchen is an investment that pays dividends for your family each and every day.

Imagine all the moments you'll spend in a kitchen so personal it could only belong to you. To get started, call **1.800.646.1986**, or visit **KraftMaid.com**, for your free copy of the KraftMaid Idea Book.

**KraftMaid**  
IT BECOMES YOU.

July/Aug  
09



Metropolitan Home VOLUME 41 | ISSUE NO. 6

**51 Summer Living**

Outdoor style is no longer just for the country—or even for the summer.

**52 The Art of Compromise**

*By Fred A. Bernstein*  
*Met Home of the Month*  
He wanted an Adirondacks cabin; she wanted an urban loft, so Resolution: 4 Architecture and designer Amy Lau came up with a house they both love.

**62 Life on Cloud 9**

*By Helen Thompson*  
Renowned Texas architects Lake/Flato created a three-building compound that embraces the Hill Country landscape.

**72 Island Outpost**

*By Raul Barreneche*  
Architect John Hix conceived a Puerto Rico vacation getaway that celebrates both modernism and the Caribbean.

**80 American Idyll**

*By Jorge S. Arango*  
When he updated a classic farmhouse in upstate New York, architect Doug Larson found inspiration in his Swedish roots.

**86 Be Our Guest**

*By Mindy Pantiel*  
A 1,000-square-foot guesthouse near Jackson Hole, Wyoming, offers real-life lessons in living large with less.

**GARDEN**

**92 Designer Greens**

*By Susan Heeger*  
Celebrated interior designer Jamie Drake hired Craig James Socia to turn his East Hampton property into a lush paradise whose plantings marry the formal and the relaxed.

**\* Metropolitan Home**  
is now on Facebook!  
And you can follow  
our roaming editors on  
[Twitter.com/methome](http://Twitter.com/methome).



BEHR Premium Plus Ultra™  
UL200-16  
Wasabi Powder

©2009 BEHR Process Corporation.



**IF ALL YOUR PAINT DOES IS PAINT... IT'S ONLY DOING HALF THE JOB.**



See the exciting new BEHR Ultra  
color palette exclusively  
at The Home Depot.

*Introducing a colorful new way  
to paint and prime — all in one.*

Every brush stroke does the work of two...so it covers in fewer coats to save both time and money. And with hundreds of sophisticated new colors to express yourself—the performance couldn't be more beautiful.

**BEHR**   
**GOOD. BETTER. BEHR.™**

[www.behr.com](http://www.behr.com)

Exclusively at



# TheModernMix

THE GUIDE TO THE LATEST EVENTS,  
PROMOTIONS AND MORE

## Tufenkian

Tufenkian Artisan Carpets offers more than 500 ready-to-ship designs and colorways, as well as custom designs and sizes. The conscientious company sets the standard for worker welfare, social responsibility and environmental preservation. For more information, visit Tufenkian online or call 800.470.6318

[www.tufenkian.com](http://www.tufenkian.com)



## Lacava

Highlights of the La Scala vanity collection from Lacava include a freestanding dresser with seven drawers, a complete range of faucets with cross and square handles, and rectangular and round sinks.

[www.lacava.com](http://www.lacava.com)

## Ligne Roset

Renowned for its French contemporary style, Ligne Roset offers exquisite, design-forward furnishings for the modern dwelling. To learn more, call 800.BYROSET or visit the company online.

[www.ligne-roset-usa.com](http://www.ligne-roset-usa.com)



## Bourgeois Bohème Atelier

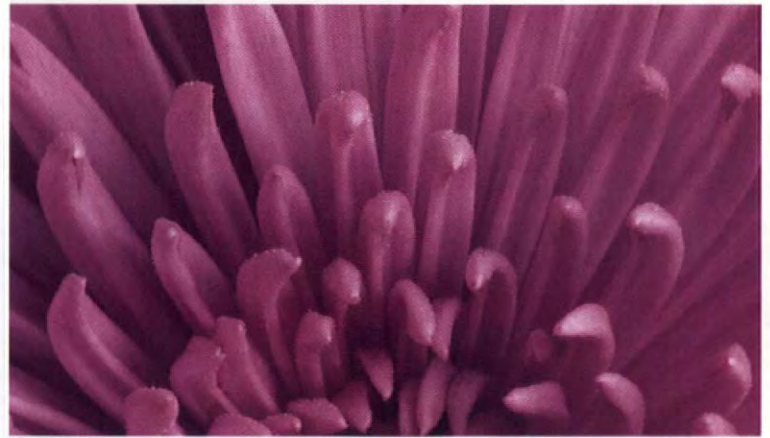
The Plaster collection by Bourgeois Bohème Atelier provides a unique lighting alternative that complements both modern and traditional interiors. Each handcrafted creation is custom made, revealing innovative character and organic sophistication reminiscent of Diego Giacometti's classic designs.

[www.bobointeriors.com](http://www.bobointeriors.com)



| For more information, visit Events & Promos online at [www.MetHome.com](http://www.MetHome.com) |

**Metropolitan Home**



Feeling is believing...  
no bars, no springs, no compromise.



Expertly crafted furniture, made-to-order in Dallas, Texas.  
To your home in about 30 days.

[www.americanleather.com](http://www.americanleather.com)

CA Bedroom & More 415.865.0933 Cantoni 877.881.9191  
 CT Connecticut Design Center 203.299.1700 GA Cantoni 877.881.9191  
 IL Avanti Furniture 815.469.1200 European Furniture 312.243.1955  
 MA Jordan's Furniture 508.828.4000 NY AKO Interior 718.375.2130 Rico 718.797.2077  
 RI Rhode Island Design 401.826.5650 TX Cantoni 877.881.9191 Skandnavia 512.451.1868  
 WI The Century House 608.233.4488 CANADA Nest Interiors Vancouver, BC 604.737.4704

Comfort Sleepers™ utilize the Tiffany 24/7™ Convertible mechanism,  
 U.S. Patent #4737996 and #6904628. LINDSAY Comfort Sleeper™ in Bison brown.



# Metropolitan Home

www.methome.com

---

Deborah Burns  
Senior Vice President/Chief Brand Officer, Luxury Design Group

---

**Donna Warner**  
Vice President, Editor in Chief/Brand Content

Keith D'Mello  
Design Director

Lisa Higgins  
Executive Editor

Linda O'Keeffe  
Creative Director

**Design+Architecture**

Susan Tyree Victoria  
Senior Editor

Katherine E. Nelson  
Senior Market Editor

Rachel Lexier  
Assistant

**Special Projects  
Editor**

Samantha Nestor

**Articles**

Michael Lassell  
Features Director

Arlene Hirst  
Deputy Director, Design+News

Katherine Lagomarsino  
Associate Editor

Flannery Hoard  
Associate Editor

Sarah Oszczakiewicz  
Assistant to the Editor in Chief

**Art**

Jeffrey Felmus  
Deputy Art Director

Cathryne Czubek  
Photo Editor

Natali Suasnavas  
Art Assistant

Jennifer Norris  
Assistant Photo Editor

**Digital Editor**  
Callie Jenschke

---

**City Editors**

Nisi Berryman Miami Beach

Barbara Vollmar Bohl Washington, D.C.

Diane Carroll Dallas

Laura Hull Los Angeles

Linda Humphrey Seattle

Ellen Johnson New Orleans

Jody T. Kennedy San Francisco

Lisa Mowry Atlanta

Jean Bond Rafferty Paris

Lisa Skolnik Chicago

Alecia Stevens Minneapolis

Helen Thompson Austin & Houston

**Contributing Editors**

Fred A. Bernstein Senior Contributing Editor

Roscoe Betsill Contributing Editor, Food

Fred Albert, Jorge S. Arango, Raul Barreneche, Aaron Betsky,  
Aric Chen, Stafford Cliff, Topher Delaney, Beth Dunlop, David Elrich,  
Cara Greenberg, Pam Hait, Peter Hellman, Karrie Jacobs, Brad Kessler,  
Susan Kleinman, Reed Kroloff, Michael McDonough, Doug Meyer,  
Gene Meyer, Susan Morgan, Murray Moss, Benjamin Noriega-Ortiz,  
Phil Patton, Stephanie Pierson, Lucie Young

**RIGHTS/REPRODUCTION**

Metropolitan Home and What the Pros Know are registered trademarks. The following are trademarks of Hachette Filipacchi Media U.S., Inc., and their use by others is strictly prohibited: Living the Met Life; Elements of Style; Hot Properties; Dr. Swatch; Screening Room; Met Grill; Design Police; Met Home; Fast Forward; Metropolitan Shop; Met Kids; Kidstyle; The Right Choice; Style for a Song; Winners; Signature Style; Design 100; Creative Eye; Easy Upgrades; Trend Watch; Projects With Heart; Design Buzz; High/Low; America the Collectible; Real Lives.

Pensi, Velo, Ball and Cloud Fans by



## Better Lighting. Better Living.

Offering the Web's best selection of contemporary fans from Modern Fan, Minka Aire, Fanimation, Matthews Fan and more. Find modern lighting, accessories and furniture from Alessi, Artemide, Blu Dot, Fine Art Lamps, Flos, FontanaArte, Foscarini, Kartell, LBL, Tech and other fine manufacturers.

 **Lumens.com**<sup>®</sup>  
LIGHT + LIVING

877.445.4486

[www.lumens.com](http://www.lumens.com)

Guaranteed pricing. Free shipping. Easy returns. Expert service.

Prepare  
for impact



MODERN DESIGN MEETS  
TRADITIONAL CRAFTSMANSHIP  
Beautiful from every angle, the  
Boden chair offers relaxed  
comfort with a luxurious feel.  
It's just one of our handcrafted,  
American-made accent chairs  
that's sure to turn heads.

The Boden chair and ottoman are  
made in North Carolina. Shown here  
in Prima leather; \$2498; available in  
more than 250 fabrics and leathers.

**Room&Board**  
HOME FURNISHINGS

we're here to help  
800.952.8455  
roomandboard.com

# Metropolitan Home

www.methome.com

**Deborah Burns**  
Senior Vice President/Chief Brand Officer, Luxury Design Group

**Barbara Hertz Friedmann**  
VP, Brand Publisher

## The Luxury Design Group

VP, Associate Publisher/Integrated Sales, **Laurence E. Oberwager**  
VP/Brand Development, **Christie Boyle**  
Public Relations Director, **Cheminne Taylor-Smith**  
Creative Services Director, **Mary Ellen Winslow**

### Sales

New York Sales Office:  
1633 Broadway, New York, NY 10019  
Tel: (212) 767-5522, Fax: (212) 333-2283

**Executive Sales Directors**, Jill Esterman,  
Matthew Talomie, Linda Tullio  
**Sales Directors**, Virginia Crawford, Cindy Hwang  
**Digital Sales Manager**, Dante Fusco  
**Regional Sales Director**, Nicole Qualls  
**Advertising Services Manager**, Judy Braunstein  
**Direct Response Sales**, Peter Brevett  
**Classified Catalog Sales**, Ross Cunningham  
**Senior Sales Assistants**, Danielle Labonia,  
Melissa Goldfischer  
**Sales Assistants**, Mary Ellen Maddalone,  
Nick Jackson

### Marketing & Promotions

**Marketing Director**, Alexis Witt  
**Merchandising Director**, Natalie Echevarria  
**Art Director**, Deborah Ragasto  
**Promotion Managers**, Carrie Dutelle, Deidre West  
**Associate Promotion Manager**, Ashley Sneed  
**Promotion Coordinators**, Jamie Bruno, Amy Hall  
**Associate Marketing Managers**, Geraldine Ang,  
Elke Pellicano  
**Graphic Designer**, Marleen Adlerblum

### Manufacturing & Distribution

**VP, Operations**, Michael Esposito  
**Production Director**, Phyllis Dinowitz  
**Production Manager**, Ellen Letcher

### Circulation

**Group Circulation Director**, William Carter  
**VP, Retail Sales and Marketing**,  
William Michalopoulos  
**Newsstand Sales Director**, John Kayser  
**VP Consumer Marketing**, Philip Ketonis

### Regional Sales Offices Atlanta

**Southern Sales Director**, Yvonne Rakes  
2970 Clairmont Road,  
Suite 645, Atlanta, GA 30329  
Tel: (404) 982-9292, Fax: (404) 982-9565

### Chicago

**Midwest Sales Director**, Tanya Amini  
500 N. Michigan Avenue, Suite 2100, Chicago, IL  
60611 Tel: (312) 923-4828, Fax: (312) 832-3231  
**Midwest Regional Office**, Medeiros & Associates,  
318 Laurel, Wilmette, IL 60091  
Tel: (847) 251-3779, Fax: (847) 251-5239  
**Midwestern Sales Director**, Gigi El Gazzar  
**Interactive Sales Manager**, David Woods

### Detroit

**Regional Sales Director**, Anne Oldani Green  
1585 Eisenhower Place, Ann Arbor, MI 48108  
Tel: (734) 205-1100

### West Coast

**Western Sales Director**, Jason Yasment  
5670 Wilshire Boulevard, Suite 1600,  
Los Angeles, CA 90036 Tel: (323) 954-4807,  
Fax: (323) 375-0500  
**Regional Advertising**, Medeiros & Associates,  
615 S. McCadden Place, Los Angeles, CA 90005  
Tel: (323) 571-2102, Fax: (323) 571-2105  
**Western Regional Sales Director**,  
Joanne Medeiros  
**Regional Sales Representative**, Molly Campbell  
**Media Manager**, Olga Salaberry

### Canada

**National Account Manager**, D. John Magner  
York Media Services, 500 Queen's Quay West,  
Suite 101W, Toronto, Ontario M5V 3K8 Tel: (416)  
598-0101, Fax: (416) 598-9191  
**Senior Account Manager**, Colleen Curran

#### METROPOLITAN HOME

1633 Broadway, New York, NY 10019  
Copyright 2009, Hachette Filipacchi Media U.S., Inc.

All rights reserved. Printed in the USA.

Reproduction in whole or in part without permission of the publisher is prohibited. Occasionally, we share our information with other reputable companies whose products and services might interest you. If you prefer not to participate in this opportunity, please call the following number and indicate that to the operator: 386/597-4375.



The Downsvew cabinetry collection is custom crafted in North America and available exclusively through select kitchen design showrooms

Visit our website: [www.downsvewkitchens.com](http://www.downsvewkitchens.com)

<b>SCOTTSDALE</b> Downsvew of Scottsdale	(480) 563-2577	<b>AZ</b>	<b>NEW ORLEANS (Harahan)</b> Classic Cupboards Inc.	(504) 734-9088	<b>LA</b>	<b>AUSTIN</b> Palmer Todd, Inc.	(512) 206-0444	<b>TX</b>
<b>BEVERLY HILLS</b> Downsvew Kitchens	(310) 858-1008	<b>CA</b>	<b>BOSTON (Wellesley)</b> Wellesley Kitchens, Inc.	(781) 237-5973	<b>MA</b>	<b>DALLAS</b> Redstone Kitchens & Baths	(214) 368-5151	<b>TX</b>
<b>COSTA MESA</b> Kitchen Spaces	(714) 545-0417	<b>CA</b>	<b>WEST BOYLSTON</b> Kitchens by Design, Inc.	(508) 835-6300	<b>MA</b>	<b>SAN ANTONIO</b> Palmer Todd, Inc.	(210) 341-3396	<b>TX</b>
<b>SAN DIEGO (Del Mar)</b> Folio Design	(858) 350-5995	<b>CA</b>	<b>WASHINGTON D.C. (Bethesda)</b> Nancy Thornett Associates	(301) 718-0155	<b>MD</b>	<b>WASHINGTON D.C. (Herndon)</b> Design Solutions, Inc.	(703) 834-6121	<b>VA</b>
<b>MONTEREY (Seaside)</b> Kitchen Studio of Monterey	(831) 899-3303	<b>CA</b>	<b>BLOOMFIELD HILLS</b> Kitchen Studio	(248) 332-5700	<b>MI</b>			
<b>DENVER/VAIL</b> Wm Ohs Showrooms, Inc.	(303) 321-3232	<b>CO</b>	<b>MINNEAPOLIS</b> North Star Kitchens, LLC	(612) 375-9533	<b>MN</b>	<b>CALGARY</b> Empire Kitchen & Bath	(403) 252-2458	<b>CANADA</b>
<b>NEW CANAAN</b> Kitchens By Deane	(203) 972-8836	<b>CT</b>	<b>ST. LOUIS (Des Peres)</b> Cutter's Custom Kitchens	(314) 965-5700	<b>MO</b>	<b>KITCHENER</b> Kitchen Concepts	(519) 894-4020	<b>ON</b>
<b>STAMFORD</b> Kitchens By Deane	(203) 327-7008	<b>CT</b>	<b>CHARLOTTE</b> Design Gaps, Inc.	(704) 965-2400	<b>NC</b>	<b>OTTAWA</b> Astro Design Centre	(613) 749-1902	<b>ON</b>
<b>DANIA (DCOTA)</b> Downsvew Kitchens	(954) 927-1100	<b>FL</b>	<b>MORRISTOWN</b> Leonardis Kitchen Interiors	(973) 829-7112	<b>NJ</b>	<b>TORONTO</b> Downsvew Kitchens	(416) 481-5101	<b>ON</b>
<b>JUNO BEACH</b> Downsvew Kitchens	(561) 799-7700	<b>FL</b>	<b>LAS VEGAS</b> Ébéniste, Inc.	(702) 368-2280	<b>NV</b>	<b>TORONTO</b> Yorkville Design Centre	(416) 922-6620	<b>ON</b>
<b>NAPLES</b> Downsvew Kitchens	(239) 262-1144	<b>FL</b>	<b>MANHASSET</b> The Breakfast Room, Ltd	(516) 365-8500	<b>NY</b>	<b>MONTREAL</b> Cuisines Multiform	(514) 483-1800	<b>PQ</b>
<b>ATLANTA</b> Design Galleria	(404) 261-0111	<b>GA</b>	<b>NEW YORK</b> Euro Concepts, Ltd	(212) 688-9300	<b>NY</b>			
<b>HONOLULU</b> Details International	(808) 521-7424	<b>HI</b>	<b>CLEVELAND (Willoughby Hills)</b> Farall's Kitchen & Bath	(440) 944-4499	<b>OH</b>	<b>BAHAMAS</b> Nassau Showroom	(242) 377-0004	<b>B5</b>
<b>CHICAGO (Highland Park)</b> nuhaus	(847) 831-1330	<b>IL</b>	<b>TOLEDO</b> Jan Merrell Kitchens	(419) 246-0991	<b>OH</b>	<b>SANTO DOMINGO</b> Kitchen Design Studio	(809) 541-7707	<b>DR</b>
<b>INDIANAPOLIS</b> Kitchens by Design	(317) 815-8880	<b>IN</b>	<b>PHILADELPHIA</b> Joanne Hudson Associates	(215) 568-5501	<b>PA</b>	<b>SAN JUAN</b> Cocinas + Diseño	(787) 721-5555	<b>PR</b>

# DOWNSVIEW KITCHENS

AND FINE CUSTOM CABINETS



DOWNSVIEW KITCHENS 2635 Rena Road, Mississauga, Ontario, Canada L4T 1G6 Telephone (905) 677-9354 Fax (905) 677-5776

# INSTANT CASH GIVEAWAY

WIN  
\$350  
INSTANT  
CASH  
this month!

Join our  
READER SURVEY PANEL  
and enter to win.

First Prize  
**\$10,000**

Second Prize  
**\$5,000**

Third Prize  
Three winners of **\$1,000**

Fourth Prize  
70 runners up of **\$100**

TO ENTER VISIT:  
[www.methome.com/sweepstakes](http://www.methome.com/sweepstakes)

NO PURCHASE NECESSARY TO ENTER. The "Instant Cash Giveaway" Sweepstakes is open to legal residents of the 50 United States (including Washington, DC) and Canada (except the province of Quebec) age 18 or older at time of entry and who have a valid email address. To view complete Official Rules (including all entry deadlines) governing this Sweepstakes visit: [www.hfmus.com/mysweepstakes](http://www.hfmus.com/mysweepstakes). Start 12:01 AM Eastern Time ("ET") pm on 11/11/08. Ends 11:59 PM ("ET") on 12/31/09. Void in the province of Quebec and where prohibited by law. Sponsor: Hachette Filipacchi Media U.S. Limit: One entry per person or email address per calendar monthly entry period.

# Metropolitan Home

[www.methome.com](http://www.methome.com)

[PointClickHome.com](http://PointClickHome.com)

## Editorial

Anne E. Collins  
Executive Editor

Leah Konen  
Assistant Editor

## Art

James Hickey  
Digital Group Creative Director

Kelly Stuart  
Photo Director

Nelson Cupeles  
Photo Editor

Christina Coviello  
Production Designer

## Digital Advertising and Marketing

John Weisgerber  
VP, Digital Advertising

Venus Ferrer  
Digital Marketing Director

Jennifer Mammana  
Digital Marketing Manager

**HFMUS.**  
HACHETTE FILIPACCHI MEDIA U.S.  
A LAGARDÈRE ACTIVE COMPANY

## Executive Staff

Hachette Filipacchi Media U.S. ([www.hfmus.com](http://www.hfmus.com))  
President & Chief Executive Officer, Alain Lemarchand  
Executive Vice President and Chief Operating Officer, Philippe Guelton  
Executive Vice President, General Counsel, Catherine R. Flickinger  
Senior Vice President, Chief Brand Officer, Luxury Design Group, Deborah Burns  
Senior Vice President, Chief Brand Officer, Woman's Day Group, Carlos Lamadri  
Senior Vice President, Chief Brand Officer, ELLE Group, Carol A. Smith  
Senior Vice President, Chief Financial Officer, Philippe Perthuis  
Senior Vice President, Chief Technology Officer, Tom Donohue  
Senior Vice President, Chief Procurement Officer, Bennett Theimann  
Senior Vice President, Consumer Marketing and Manufacturing, Thomas Masterson  
Senior Vice President, Digital Media, Todd Anderman  
Senior Vice President, Corporate Communications, Anne Lattimore Janas  
Vice President, Human Resources, Eileen Mullins

HFM U.S. is part of Lagardère Active, a division of Lagardère SCA ([www.lagardere.com](http://www.lagardere.com)).  
Chief Executive Officer, Lagardère Active, Didier Quillot  
Chief Executive Officer International, Magazine Division, Lagardère Active, Jean de Boisdeffre

SUBSCRIPTION/CUSTOMER SERVICE. ONE-YEAR SUBSCRIPTION RATES: (10 issues) for U.S. and possessions, \$15 (1 year), \$30 (2 years), \$45 (3 years); Canadian, \$41 (one year), \$82 (2 years), \$123 (3 years) (includes 5% GST Tax); Foreign, \$44 (one year), \$88 (2 years), \$132 (3 years). PROBLEMS/QUESTIONS: 386/597-4375; Fax 303/604-7644; Write to Metropolitan Home, P.O. Box 51890, Boulder, CO 80322-1890 (include a recent address label if possible). BACK ISSUES: U.S., \$8.95; Canada, \$10.95; Foreign, \$15.95. Send check or money order to: Metropolitan Home Back Issues, P.O. Box 50191, Boulder, CO, 80322-0191; Tel: 800/333-8546, Fax: 641/842-6101. Cash orders only, payable in U.S. currency.

For information on reprints and eprints please contact Brian Kolb at Wright's Reprints, 877/652-5295 or [bkolb@wrightsreprints.com](mailto:bkolb@wrightsreprints.com).



THINK YOUR VIEW  
CAN'T GET ANY  
BETTER? CLEARLY IT CAN.



Actual Photo

### INTRODUCING A NEW KIND OF REPLACEMENT WINDOW SCREEN.

Now views from your windows can be clearer and brighter than ever before with the GORE™ inLighten™ window screen. Made with an innovative ultra fine material, it appears virtually invisible!

It also brings 50% more light and up to 3 times more airflow into your home compared to any other window screen material.

Visit our website [www.inlightenscreens.com](http://www.inlightenscreens.com)  
for your **FREE** sample today!





**Once upon a time I gardened like a maniac, totally loving every step of the experience.** On the coldest, darkest winter days, I'd spread out seductive seed catalogues on my kitchen table and make tough decisions about 'Red Swan' beans versus 'Fin de Bagnol' haricots, wonder if I could fool Mother Nature and get artichokes to survive in zone 6A and calculate how many little lettuces I could fit into the eight-foot-square spot I'd assigned to them. I smuggled seeds back from abroad, saving the packages as personal ephemera.

No matter how much compost we work in, we've always had a base of heavy clay soil with a vernal spring nearby (who knew?), so the garden remains practically under water until well past the Saint Patrick's Day plant-your-peas date. But faithfully, as early in the year as our floods allowed, we'd turn over and "improve" the heavy earth, and I'd spend blissful, buggy hours painstakingly planting seeds of every vegetable I'd ever tasted in a European restaurant, plus family favorites. I added every color of zinnia and sunflower for bright spots I could see from the house and later I'd plunder them for flowers to grace my table.

Calamities occurred regularly: One year a creature ate off the tops of every newly unfurled bean plant. The lovely lettuces all had tiny, little holes from tiny, little bugs. The horses managed to lean in over the fence far enough to snack on sunflowers, mesclun and beet greens. Last year they even sampled the heirloom green tomatoes I'd mail-ordered from California. (At least I've always been canny enough to put the carrots dead center.)

Then there's the weeding. Why do weeds grow ten times faster than anything else? I've had weeding parties with white wine, used ugly plastic mulch, hired kids who left the roots. I actually don't mind

weeding—it's relaxing but truly time-consuming. All this has led me to question my gardening (in)sanity when I'm now able to buy most everything I ever grew at local farmers' markets.

But what about the amazement of picking dinner, knowing it all started from those tiny seeds, that all those hours of "work" resulted in such a miracle?

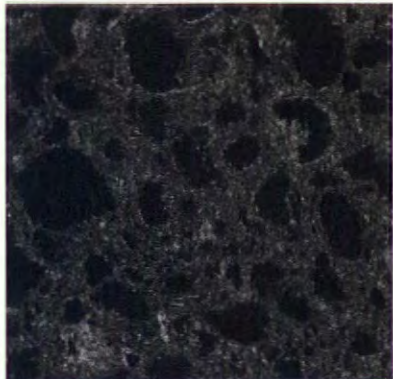
It's now mid-May. I've been away for three weekends in a row at trade shows, and the garden (thanks to a wet spring) hasn't even been turned over. I never ordered seeds. I'm wondering what it would look like as a weed patch.

Then last night I had dinner at the famed working farm/restaurant Blue Hill at Stone Barns. The staff showcased everything they'd grown in their gardens or foraged nearby—exquisite spring fiddleheads, ramps, asparagus. The restaurant served *Andante Dairy* cheeses, named by cheese maker Soyoung Scanlan because, as the website explains, *andante* is the musical tempo mark that indicates the "moderate rate of speed of a strolling walk." Scanlan chose the name, it went on, "in order to describe her longing for the slower speed of life, the proper speed of traditional cheese making."

I got the point: Slow down and plant your garden.

—Donna Warner, Editor in Chief

# Color Expression<sup>09</sup>



Black Rocks 4170



Basalt Black 6185T



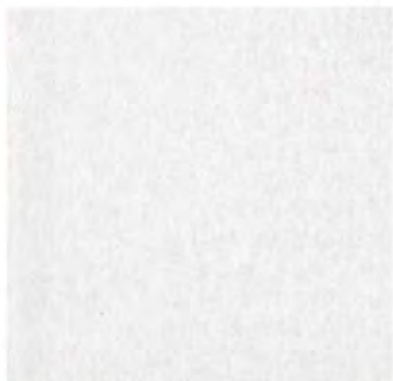
Smoky Ash 6140



Dusty Stones 4040



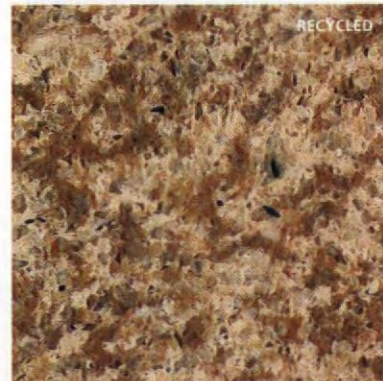
Metallic Black 7185



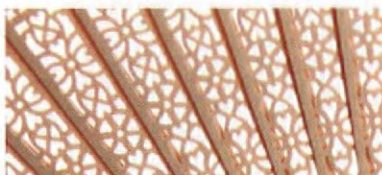
Organic White 4600



Buttermilk 4220



Chocolate Truffle 6350



## Introducing 8 New Expressive Colors

CaesarStone's unique ingenuity and ability to influence trends can be captured in a remarkable new lineup of surfaces that push the boundaries of creativity. The Color Expression '09 Collection offers an impressive recycled line, a new matte-hammered texture, and the first and only black metallic-accent surface — all covered for life by our **Lifetime\* Warranty**.

To learn more about CaesarStone's Color Expression '09 Collection, please visit [www.CaesarStoneUS.com/expression](http://www.CaesarStoneUS.com/expression)

\* Some restrictions apply. Copies of our Lifetime Warranty are available at authorized dealers. Learn more by visiting [www.CaesarStoneUS.com](http://www.CaesarStoneUS.com) or calling 877.978.2789.

# RIEDEL

THE WINE GLASS COMPANY



SHAPE MATTERS



CABERNET  
SAUVIGNON



RIESLING



PINOT NOIR

RIEDEL-WEBSTORE.COM

Inbox

## July/Aug 09

### Kudos to Kaner

Seeing a 1930s classical revival residence come alive all over again—and in a way that's more suitable for the lifestyle of today's family—is refreshing ("Queens for Today," p. 112, May '09). Meeting the challenge of preserving and restoring the architectural character, while re-creating an interior that looks and works coherently, requires a delicate balance that the client and the designer should be proud of. Indeed, it's a fine example of the traditional modern vocabulary. With his unique talent and skill, Robert Kaner is an extraordinary interior designer.

*Dan Bray [Orlando, FL]*

### And I Was There

I was delighted to read Jorge Arango's story on the Forest Hills Gardens home built in the 1930s (see letter above). That marble tile entry foyer remains as beautiful as ever. In the early 1950s, as a young girl, I grew up directly across the street from this home. I often played with the daughters who lived there. The owners were very musical and had three pianos in the main living areas. I hope that the young twins pictured have as much fun racing up and down the front and back staircases as we girls did many years ago.

*Joan Driscoll [Sarasota, FL]*

### Lest We Forget

Just wanted to say thank you for being such a great magazine and for introducing me to the wonderful and magic world of design. I am new here. I grew up in Lithuania, which used to be part of the Soviet Union, and where, 15 years ago, we had to stand in line for two hours just to buy a pot or a teakettle. Our choices were limited. Every other house or apartment had the same wall coverings, the same kitchen cabinets and the same glasses. Words such as "unique," "different," "innovative," "provocative" or "interesting" did not describe our homes or styles. When I came to the U.S. four years ago I fell in love with interior design, furniture, rugs, vases, lamps ... so many choices, so many different styles—heaven! Your magazine stood out as the most innovative, interesting, fresh and real. I am studying to become an interior architect. I have a lot to learn, and your magazine is one of the best teachers I've ever had.

*Egle Bankauskaite  
[Wauconda, IL]*

If you see something on our pages that makes you smile or growl, please feel free to send us an e-mail at [metletters@hfmus.com](mailto:metletters@hfmus.com)—or a letter to Inbox, Metropolitan Home, 1633 Broadway, New York, NY 10019. All communiqués will be edited for content and length.

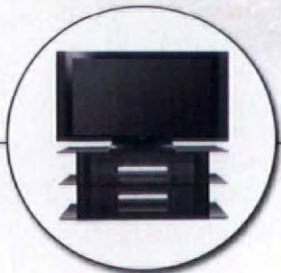
# ITALIAN DESIGNED HOME THEATER FURNITURE

TV WALL MOUNTS • HOME THEATER SEATING SYSTEMS • ACCESSORIES



*Bell'O*  
simply...beautiful®

AVSC2061E VERSATILE ESPRESSO  
FINISH AUDIO/VIDEO SYSTEM



AVSC2055B



AVSC2121



FP4858HG



WAVS326



WAVS341



CABLE MANAGEMENT SYSTEM

## BELL'O INTERNATIONAL CORPORATION

711 GINESI DRIVE, MORGANVILLE, NJ 07751 TEL. 732.972.1333 FAX 732.536.6482 WWW.BELLO.COM E-MAIL: SALES@BELLO.COM

IN CANADA: TEAC CANADA LTD. TEL. 905.890.8008 FAX 905.890.9888  
IN MEXICO: EQUIPOS Y CINTAS SA DE CV TEL. 525.543.4763 FAX 525.687.0688  
IN PUERTO RICO: BONNIN ELECTRONICS, INC. TEL. 787.725.4765 FAX 787.725.0840



## Coverage in Japan. And more than 200 other countries.

The world is calling. Answer it. With Verizon Wireless, you can call and text in more than 200 countries. Plus, with more data coverage than ever before, you can email and browse the world wide web—around the whole wide world. So before you travel the globe, for business or pleasure, switch to Verizon Wireless, America's Largest Wireless Network.



**BlackBerry Storm™ \$199.99** with 2-yr activation on voice plan with email feature or email plan.

Call **1.800.2 JOIN IN**

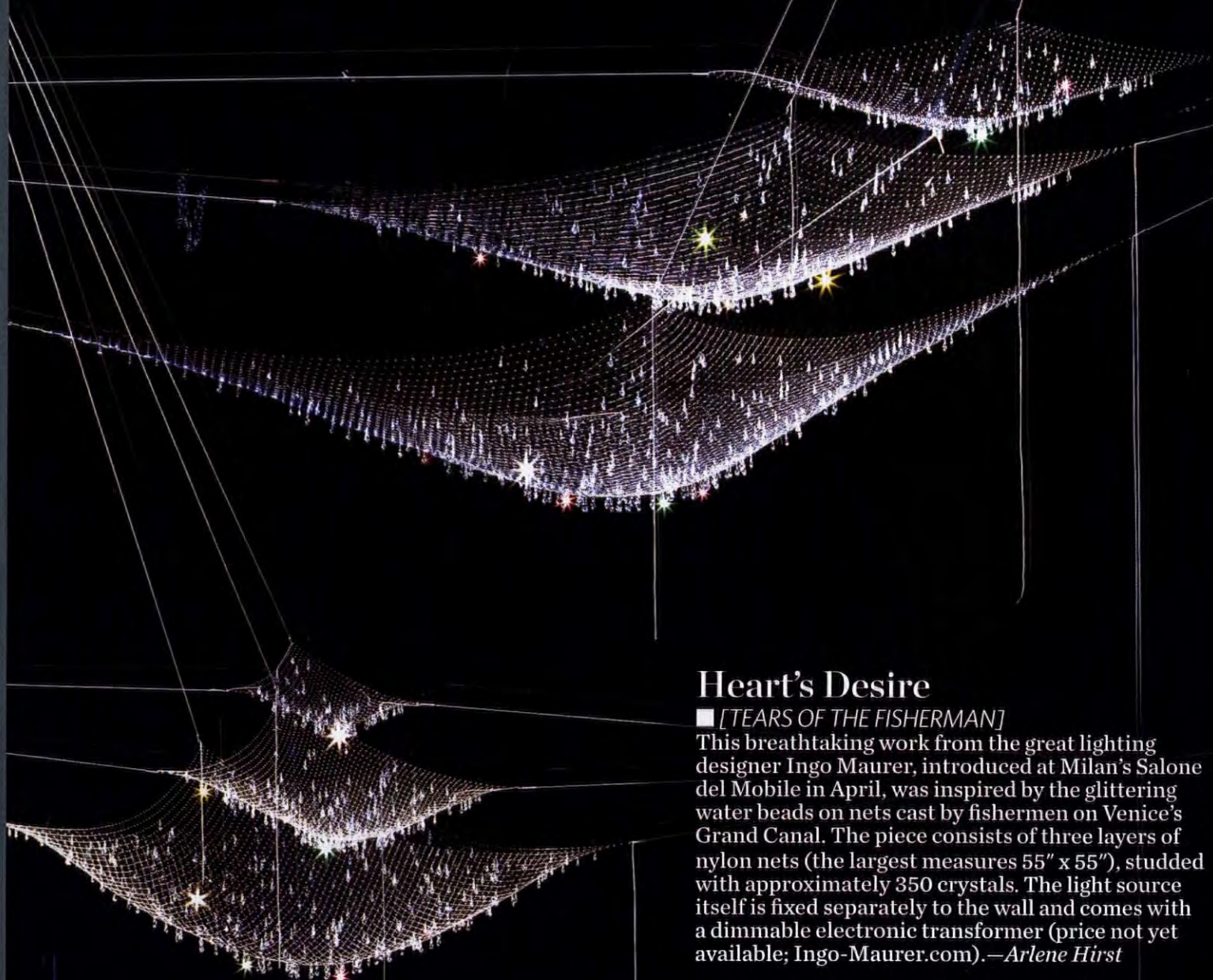
Click [verizonwireless.com/goglobal](http://verizonwireless.com/goglobal)

Visit your local Verizon Wireless store

Activation fee/line: \$35.

IMPORTANT CONSUMER INFORMATION: Subject to your Major Account Agreement or Customer Agreement, Calling Plan, & credit approval. Up to \$175 early termination fee/line & other charges. Device capabilities: Add'l charges apply. Offers and coverage, varying by service, not available everywhere. Network details and coverage maps at [verizonwireless.com](http://verizonwireless.com). ©2009 Verizon Wireless.

Look | Learn | Shop | Travel | Eat | Stay | Go Green



## Heart's Desire

■ [TEARS OF THE FISHERMAN]

This breathtaking work from the great lighting designer Ingo Maurer, introduced at Milan's Salone del Mobile in April, was inspired by the glittering water beads on nets cast by fishermen on Venice's Grand Canal. The piece consists of three layers of nylon nets (the largest measures 55" x 55"), studded with approximately 350 crystals. The light source itself is fixed separately to the wall and comes with a dimmable electronic transformer (price not yet available; Ingo-Maurer.com).—*Arlene Hirst*



# Word.



High  
\$979

Low  
\$248



## High/Low

■ [GARDEN CHAIRS]

Dine alfresco on these craftily engineered wire chairs that serve up "ironic" style on a budget or a splurge. The elaborate twists and turns of the hot-dipped, pre-galvanized metal rods in the HIGH version—*Re-Trouvé* by Patricia Urquiola for Italian manufacturer EMU—are created with high-tech manufacturing processes (\$979; 888/502-5749). The LOW *High Wire Act* chair from Anthropologie is made of simpler powder-coated steel that's been coaxed into the shape of a flower (\$248; Anthropologie.com).—AH



## Met Tomes

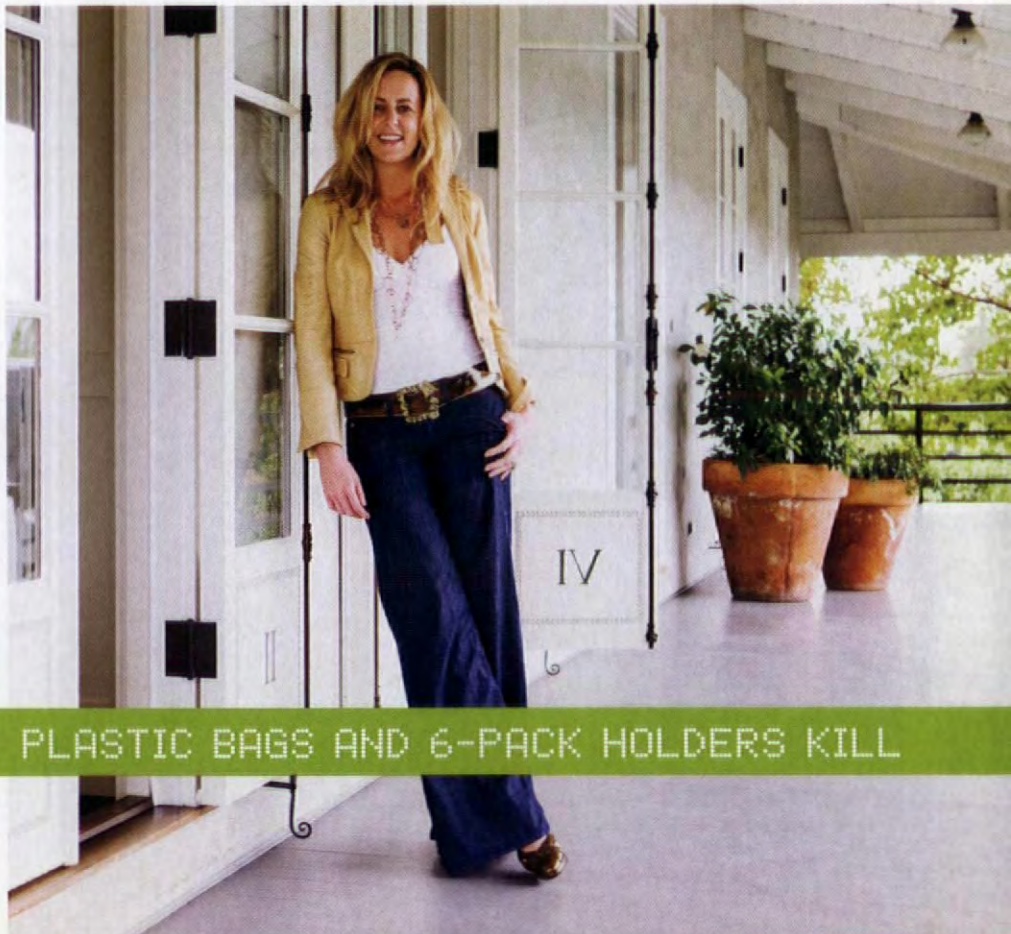
■ [OUR NEW BOOK]

Introducing *Glamour: Making It Modern*, which includes over 200 photographs from the work of 138 designers and architects who have appeared in *Metropolitan Home*. It's all about the look, but not all about the money: As design star Vicente Wolf says, "Glamour doesn't need to break the bank, but it should break the mold" (HFMBooks.com).—Michael Lassell

## Secret Source

■ [ERIN MARTIN, MARTIN DESIGN]

"I love Washington Chain & Supply in Seattle (WaChain.com). We've found great old nautical rope and giant red buoys, which we cut in half and turned into massive chandeliers."—Rachel Lexier



ECO TICKER



PLASTIC BAGS AND 6-PACK HOLDERS KILL

OPPOSITE PAGE: ERIN MARTIN; JOHN ELLIS; THIS PAGE: EVA ZEISEL; TALISMAN PHOTO; CAMERA: COURTESY DIGITAL BLUE.



## Owners' Manual

### ■ [STREAMING TV]

If you're anxious to save a little money, look no further than your TV. A slew of new technologies can access TV shows and movies through the Internet, allowing you to downgrade or even cancel your cable—saving hundreds of dollars a year. Here's how.

■ All of the major networks and even Netflix

offer ways to download or stream their newest content. But you need to link your Internet connection to your TV. The cheapest solution is to simply buy a cable that connects your computer to your TV screen. If you bought your computer and TV in the last couple of years, a DVI-HDMI cable should do the trick.

■ To avoid having to futz with websites or iTunes to watch a show, just load a little bit of software

onto your computer. For Macs, Boxee gathers all the outlets for TVs and movies, creating channels you can surf on your TV, using your remote control. XBMC works similarly for computers running Windows.

■ That said, it's even more convenient to have a dedicated set-top box that will act just like a cable box but draw content from your Internet connection. The granddaddy of these is Apple TV (left, \$230), which allows you to easily rent movies and TV shows in HD via iTunes. Meanwhile, Netflix offers the Roku. For \$100 and the \$9 monthly Netflix fee, you can stream 10,000 titles on demand.

—Cliff Kuang

Every day in the United States, we produce enough *trash* to equal the weight of the Empire State Building.



## Tongue in Chic

### ■ [3MP Digital Camera]

For your inner child (or your actual one), check out the new 3MP digital camera from LEGO. The toy maker has teamed up with tech company Digital Blue on a colorful line of electronics. The bricks may not be movable, but with a 1½" LCD screen and 128MB of memory, this gadget's still fun (\$50; Zappos.com).

—Flannery Hoard



## The Rug Company

### ■ [EVA ZEISEL RUGS]

Age hasn't slowed down the legendary designer, now 102 years old. She has transformed three of her ceramic designs into hand-knotted, hand-carved magical carpets. Zeisel is shown with *Dimple Spindle*, based on her famous belly-button room dividers (6' x 9', \$4,860; TheRugCompany.info).—AH

100,000 MARINE MAMMALS AND OVER ONE MILLION SEABIRDS A



# Word ■ metro

see



■ **see**

*alice tully hall/  
new york city*

New energy pulsates at the corner of Broadway and West 65th Street with the recent renovation of one of Lincoln Center's most under-recognized venues. Architecture firm Diller Scofidio + Renfro carved into the original boxy building, which houses both Alice Tully Hall and the Juilliard School, to dramatically expose the once-hidden lobby to the street. The hall itself now sports a new veneer of African hardwood, called mobai, behind which are embedded LED lights that offer a rich yet subtle glow when reflected off the wood (1941 Broadway; LincolnCenter.org).—*Katherine Lagomarsino*

■ **stay**

*the missoni hotel/  
edinburgh, scotland*

The Italian fashion house has launched a sexy new line of hotels, designed by architect Matteo Thun, for travelers seeking a sartorial slant. The first property, in Edinburgh, features 136 rooms clad in black, white and silver Missoni fabrics. The second hotel, in Kuwait, will be outfitted in saturated reds, oranges and yellows—and plans are under way for 30 more hotels within the next 10 years. Rooms begin at \$300 per night (44+131/220-6666; HotelMissoni.com).—*KL*

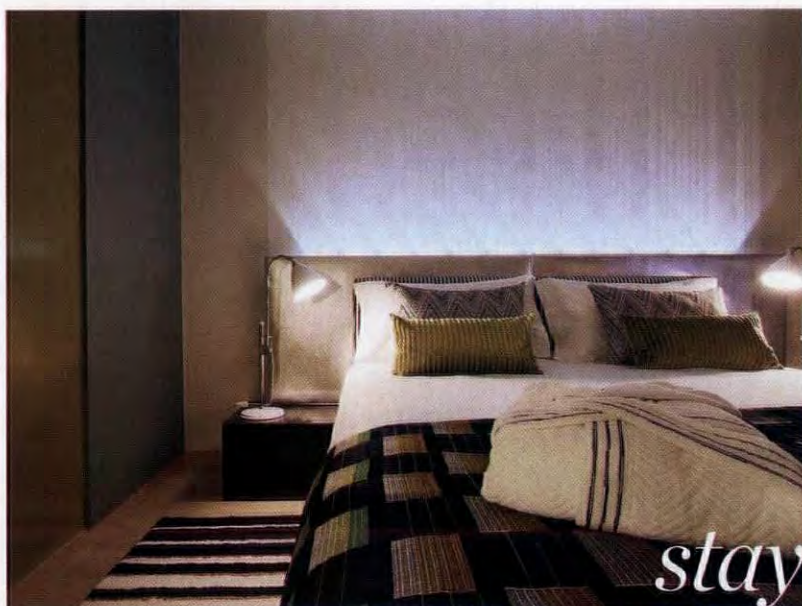


shop

■ **shop**

*talents/  
paris, france*

The Ateliers d'Art de France has opened a new contemporary-design boutique steps from the Opera Garnier in Paris. Called Talents, the concept store lives up to its name, promoting French craftsmanship in furniture, lighting, decorative objects, jewelry and tableware with work by more than 70 young artisans and designers. Objects in the double-height boutique range from porcelain cups to an eye-popping chandelier (above) made of plasticized and pearlized paper crystals (1 bis rue Scribe; 33+1/40.17.98.38; AteliersdArt.com).—*Jean Bond Rafferty*



stay

■ **eat**

*rivera/  
los angeles*

After a 14-year hiatus, chef John Sedlar, revered in L.A. for his modern take on southwestern cuisine, is back in the kitchen at this innovative Latin eatery. The long, narrow space, by architect Osvaldo Maiozzi and designers Eddie Sotto and Deborah Gregory, features multiple seating areas, including a tequila bar and a communal table. Among the signature dishes are tortillas *florales* (homemade corn tortillas embedded with sprigs of herbs and served with avocado butter), mussels with chorizo, and banana-leaf braised pork shoulder (1050 S. Flower St.; 213/749-1460; RiveraRestaurant.com).—*Laura Hull*



eat

YEAR....



OVER 100 MILLION AMERICANS LIVE IN AREAS WITH AIR

# Color Culture

15-32

Milk White

11-7

Cherish



## Color makes the room.

You won't find us on any runway. Or gracing the pages of the latest fashion magazines. But we're the choice of today's hottest designers. For our vast color selection. For our drive to deliver perfection. We're Pratt & Lambert Paints. And when it comes to your walls, you should *Never compromise*®.

Eye-catching style is easy to achieve if you know where to look. Visit [prattandlambert.com](http://prattandlambert.com) to locate an authorized dealer near you.

[prattandlambert.com](http://prattandlambert.com)



**PRATT & LAMBERT  
PAINTS**

*Never compromise*®



# Word ■ *the goods*

By Arlene Hirst



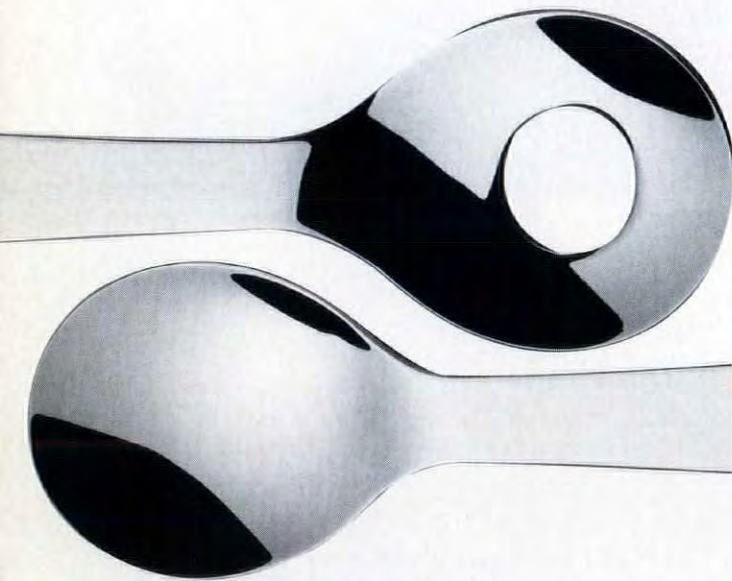
**Stack Shelves/Target**

Target hits the mark again with Dror Benshetrit's stacking, asymmetric storage cubes. The units, which come in a graduated set of four, can be clipped together in endless combinations without the need for tools. Made of MDF, they range from 15½" w x 12" h to 22" w x 18" h (\$90 for a set of 4; Target.com).



**Secto Light Fixtures/Seppo Koho**

Head to the Finnish line: The lamps in this classically modern lighting collection, all designed by Koho, cast a softly luminous glow. Local carpenters handcraft the finely drawn pieces from Finnish birch. *Octo*, the round pendant lamp shown, measures 26¾" h x 21" dia (price on request; Limn.com).



**Accento Salad Servers/Serafino Zani**

The strong graphic forms of the salad servers that Konstantin Grcic designed for the Italian company are an exercise in pure form. The pieces, part of a new dinnerware service, are made from the highest quality stainless steel, which is given a bright polish (\$90 for a pair; Ameico.com).



**Flint Table/McGuire**

Interior design star Barbara Barry's new collection for McGuire includes this architecturally arresting side table. The top, hand-cut and chiseled from a single piece of Saint Petersburg limestone, is set atop a wrought antique-brass tripod (22¾" h x 24¾" dia; \$1,960; McGuireFurniture.com). □

POLLUTION LEVELS CONSIDERED HARMFUL BY THE U.S. GOVERNMENT.



Your only regret is that you didn't do it sooner.



Achieving the look you've been dreaming of is easy and affordable with 8-oz paint samples, custom-color matching and our ongoing commitment to low prices that can't be beat. For painting tips and a project checklist visit [Lowe's.com/Paint](http://Lowe's.com/Paint).



Valspar paint shown: Wall-Navy LAL412, Trim, Anthem White-7006-24. Flooring and Window: 167057 Allen + Roth Aruba Camel 8x10-ft. Area Rug, Bruce Lock & Fold Brazilian Cherry Hardwood Flooring, 93415 Levolor Faux Wood Blind, Table: 110832 28-in. Traditional Leg, 228499 1x24-in Round (Creative Ideas project). If you happen to find a lower price on an identical stock item at any local retail competitor, and provide confirmation of that price, we'll match it and beat their price by an additional 10%. For the store nearest you, call 1-800-993-4416. © 2009 by Lowe's. All rights reserved. Lowe's and the gable design are registered trademarks of LF, LLC.

# The New Village Green

Thanks to financial incentives from the federal government and many states, there's a new movement afoot to build sustainable subdivisions.

By *Karrie Jacobs*

A couple of years ago Chris Krager, an architect I know in Austin, Texas, called me to announce that he was on the verge of developing, designing and building a "net-zero subdivision." At the time, I didn't exactly know what he was talking about. Sure, I understand "subdivision"—generally the word refers to a large parcel of land that has been divided up into small lots upon which single-family homes are built. (The term has a derisive flavor, redolent of sprawl and cookie-cutter architecture.)

I also knew that Krager, 41, who heads a six-person design/build firm and has a talent for erecting elegant low-cost homes, had long been dreaming of subdivisions, much the way a magazine writer dreams of novels. But the phrase "net zero"

meant nothing. Krager had to explain—slowly—that he was planning to build a development in which the houses generate as much energy as they consume over the course of a year. Net energy use: zero. At the time, it sounded like magic.

Now, of course, "net zero" is part of the familiar lingo of green development. And by the time you read this, nearly a third of the homes in Krager's development, Sol (which also stands for Solutions Oriented Living), should be nearing completion. Located about three miles northeast of downtown Austin, Sol will ultimately consist of 40 fetching little modern houses with photovoltaic arrays on the rooftops, extra-dense insulation in the walls and highly efficient heating and cooling systems. Some of the houses will be modular, built at a factory less than a mile away, and others will be site built. The units will range in size from 1,000 to 1,800 square feet, priced from the low \$200ks to the mid \$300ks,

Chris Krager's compact houses for Sol, in Austin, Texas, have photovoltaic collectors on the rooftops, extra-dense insulation and highly efficient heating and cooling systems.





# Work of Art

Every Floor is a

Carpet • Hardwood • Laminate • Tile

Stone • Vinyl • Area Rugs



 MANNINGTON®

Adura Luxury Flooring

Style: Corsica | Color: Cavern

THE LOOK OF TILE. THE WARMTH OF ADURA.



# Abbey Carpet & Floor®

*America's choice in floor fashions since 1958.*

Great Floors! • Affordable Prices! • In Sale Now! • BuyAbbey.com



Alys Beach, a luxury resort community on the Florida Panhandle, was planned by Duany Plater-Zyberk, the firm that kicked off the New Urbanist trend with its 1980s scheme for Seaside, a few miles down the road. The houses are a brilliant shade of white, with white concrete shingles on the roofs that help keep them cool.

although eight of the units will be sold at subsidized prices and another eight will be retained by a local nonprofit as rentals. “We don’t ensure sustainable communities just by building green,” Krager contends. “There have to be economic and social justice components.”

**K**rager’s dream development positions him at the leading edge of a new movement to build green subdivisions, one that might help some home builders weather the downturn as it addresses the thorny issue of sustainability. In recent years, financial incentives from the federal government and many states have encouraged even the most conventional builders to mount photovoltaics atop a handful of their faux Mediterraneans and Tudors. And a mini boom in green development was spurred by the official launch in January 2008 of LEED (Leadership in Energy and Environmental Design) for Homes, a residential version of the most widely recognized green rating system for commercial buildings.

The U.S. Green Buildings Council, the sponsor of LEED, and McGraw-Hill Construction released a study in July 2008 claiming that 330,000 homes with green features had been built in the past three years and indicating that 70 percent of buyers are “more inclined to purchase a green home over a conventional home in a down housing market.” One of the LEED case studies on the U.S. Green Buildings Council website is Carsten Crossings, part of an utterly typical-looking suburban development called

Whitney Ranch, in Rocklin, a central California town some 30 miles northeast of Sacramento. The homes have names like Grasslands and Meadowfield and are the usual hodgepodge of watered-down historic styles. With two-car garages out front and 2,500-square-foot floor plans, these homes appear to be no different from other tract houses.

What you don’t see at first glance are the SunTiles photovoltaic collectors hidden on the rooftops. The houses use two-thirds less energy than a comparable suburban home because they each generate a couple of kilowatts. Each house also has a coating called TechShield under the roof that reflects back the sun’s heat and an energy-saving tankless water heater, as well as extra-dense soy-based insulation.

When asked why the developer, the Gruppe Company, decided to incorporate green features, Mark Fischer, the firm’s chief financial officer and the senior vice president for construction and sales, gives an archetypal home-builder answer, “I just thought, in a sea of widgets, wouldn’t it be nice to have a widget that stands out.” So far, Gruppe has built 80 of the LEED-certified homes, and even as the downturn hit in 2007, it sold its widgets twice as fast as its non-green competition.

Happily, not every extraordinary development looks quite so ordinary. Alys Beach, for example, a luxury resort community on the Florida Panhandle, is rather exotic. This pedestrian-oriented town was planned by Duany Plater-Zyberk & Company, the firm that

famously kicked off the New Urbanist trend with its 1980s scheme for Seaside, a few miles down the road. The first thing you’ll notice about the million-dollar-plus homes in Alys Beach is that they look as if they were airlifted from a Spanish-influenced place in the Caribbean and are a brilliant shade of white. Mike Ragsdale, Alys Beach’s “town evangelist” (meaning he practices public relations, not religion), argues that the architectural style itself signals that the development is green, but maybe not in ways we’ve come to expect. “I think it’s incredibly unfortunate that in the ’70s and ’80s we got it stuck in our heads that to be green means having big, ugly solar panels on the rooftop. And we all have this preconceived notion that being green means making sacrifices, and it doesn’t.”

He argues that the very whiteness of the houses—in particular, the white concrete shingles on the roofs—is one green aspect, helping to keep the houses cool in the Florida sun. And the “timelessness” of the architecture, coupled with the “fortified” (hurricane-hardened) construction, means, Ragsdale contends, that they’ll last much longer than typical American houses. And durable, by definition, is sustainable.

**B**ut the 1970s model Ragsdale derides hasn’t gone away. It’s just grown up to be much more refined, technologically and aesthetically. Take Verde Village, a middle-class, affordable community in Ashland, Oregon, that broke ground early this year. The development is a labor of love for Greg and Valri Williams, a couple in their early 50s, who were, until recently, in the business of selling herbaceous annuals; they used to own actual greenhouses. The 12 acres on which the greenhouses once stood, formerly rural but now zoned residential, will be redeveloped. The couple started out four years ago—the Oregon land-use review process moves slowly—with the

intention of building something that, in Greg's words, "sticks to our values."

The couple sat down with a landscape architect, a planner and an engineer. "We put all our values up on the wall," says Greg. The result will be 68 homes designed by Solarc, a Eugene-based architecture and engineering firm, each priced at about \$300 a square foot. The smallest cottages will be about 900 square feet; some of the homes will be as large as 2,400 square feet. As with Sol, a portion of the project (15 homes) will be subsidized. All will have lots of glass on the south walls and photovoltaic arrays on every rooftop. Most of the homes will be hooked up to a geothermal loop that will pump fluid at constant ground temperature (56 degrees in Oregon) through pipes embedded in the floors. Cisterns will capture rainwater, and storm water will be managed by bioswales. And each of the smaller cottages comes with a

raised bed for gardening. "It's anti-American not to have a garden," says Greg, only half joking. The architectural style is cheerfully contemporary but adventurous, with fashionable gestures like standing-seam metal roofs.

**P**ersonally, I'm of two minds. While I think that green strategies should be incorporated into everything, whether we're talking a tract house or a yurt, retrofitting cul-de-sac subdivisions with energy-saving features doesn't feel like a very momentous change. What I admire about Verde Village and most especially about Sol is not just the good intentions of the developers, but that they're examples of taking the subdivision concept and completely rethinking it. As Krager puts it, "The intention of this project was twofold. One, to put all of our interests as architects working in the urban envi-

ronment into one project." I think it's particularly significant that Krager's architectural style, even before he was talking green, was about coupling highly efficient layouts with strategic management of the strong Texas sunlight. Sol's houses aren't sustainable just because they have bamboo floors or Energy Star appliances or low-flow toilets. These homes are sustainable really because they're designed by someone committed to making small houses work: they have open floor plans, modest bedrooms and larger public areas and thoughtful features like built-in desks in hallways. The second intention of the project, Krager continues, is to "propose a model for sustainable development that we can take on the road. If we can bring a model to the market that is profitable and also leverages the momentum of the sustainability dialogue," Krager reflects, "I think we can take that a long way." □

For your ceiling.

**circa**  
LIGHTING®  
*simplybrilliant*®

Savannah | Atlanta | Charleston | Houston  
877 762 2323

shop [circalighting.com](http://circalighting.com)



Until a permanent house can be built, Glen Lajeski and Gerry Etcheverry erected a trio of tent cabins—fabric walls stretched across wooden frames.



# Tentative Occupancy

In Sonoma County, California, a couple communes with nature (without forsaking their Frette sheets) in a compound of canvas "bungalows."

By Fred Albert

While visiting a friend in northern California four years ago, Glen Lajeski spied a newspaper ad listing acreage for sale. Intrigued, the Disney executive asked his host if they could look at the land on their way to the airport. Lajeski's friend hesitated. "I know when you see this property," he cautioned, "it's going to change your life."

Strolling the 160-acre parcel the following day, Lajeski found babbling brooks and Technicolor hillsides flush with wildflowers. Gauzy strands of moss hung from the oak trees overhead, while verdant vineyards sprawled across the valley below. Wasting no time, Lajeski phoned his partner, Gerry Etcheverry, back in Los Angeles and announced that he had found their new home. Accustomed to such proclamations, Etcheverry didn't give this one

much credence until he ventured up to Sonoma County and saw the property for himself. He was instantly smitten. "There's just something about it that's special," says the former cosmetics executive.

To tide them over until a vacation home could be built, the pair decided to erect a trio of tent cabins—semipermanent structures with fabric walls stretched across wooden frames. It took the better part of a year to prepare the site, as the men cleared away poison oak and fallen trees and lined the creek beds with rocks collected around the property. Once the foundations were complete, it took another couple of months to assemble the tents, which the couple purchased from Sweetwater Bungalows ([SweetwaterBungalows.com](http://SweetwaterBungalows.com)).

A meandering driveway deposits visitors at the top of a hillside, where rustic steps descend past a 12-by-14-foot guest tent complete with deck and outdoor shower. A hog-wire screen knitted with honeysuckle conceals the bathroom, a vintage

garden shed outfitted with a composting toilet.

Continuing down the hillside, redwood stairs span a lazy stream that leads to the 14-by-20-foot living/dining tent. The stream reemerges on the other side of the tent and tumbles into a small pond that was carved from the forest floor by wild hogs wallowing in the mud. A third tent, which contains the master bedroom, straddles the shoreline nearby.

The men modified the stock tents with extra French doors and fitted the main structure with a pair of arched windows purchased at the Rose Bowl flea market. Lajeski painted the plywood floor in a geometric pattern and furnished the

interior with attic castoffs reupholstered in durable outdoor fabrics. A tubby, tangerine woodstove from the 1970s was set in front of a tempered-glass window, allowing Lajeski and Etcheverry to warm their toes while watching fog drift across the valley below. The kitchen set from Lajeski's childhood home serves as a dining table and is lit by an Ikea chandelier spray-painted tan to match the floor.

What started as a temporary living space soon became an obsession. "Glen tends to get carried away," Etcheverry sighs. The men stocked the pond with nearly two dozen koi and hauled truckloads of plants down the hillside, creating a succession of thematic gardens.

With so much land at his disposal, Lajeski couldn't just kick back, so he went out and bought 1,200 olive trees. "Most people would experiment with maybe 50 trees first," observes Etcheverry. The pair ended up having to clear, irrigate and fence eight acres of

Clockwise from top: Interiors are furnished with castoffs reupholstered in outdoor fabrics; the kitchen is located under a corrugated-metal lean-to outside the main tent. The master bedroom deck extends over the pond.

land before the trees could be planted, then found their orchard under attack from field mice and ground squirrels. The vermin vanquished, Lajeski hopes to produce his first batch of olive oil next year, which he'll market under the property's name, Split Rock Springs Ranch.

The men make the journey from Los Angeles nearly every weekend, vying with their guests for control of the master bedroom's outdoor shower, which overlooks the pond and waterfall. While Lajeski gardens, Etcheverry commandeers the kitchen, which is located under a corrugated-metal lean-to outside the main tent. The oven, grill and refrigerator run on propane; electrical items are powered by a pair of photovoltaic panels. To clean the kitchen, they simply haul out a leaf blower.

Meals are shared around an outdoor dining table fashioned from a vintage zinc tabletop propped on a pair of metal sawhorses. Morning coffee is savored on the bedroom deck, where Lajeski and Etcheverry lounge under a canopy of 'Black Dragon' wisteria.

The tents have proven so popular that the owners plan to keep them as guest quarters even after the main house is completed. "You're living with nature much more closely than if you were living in a house," observes Lajeski, who enjoys snuggling under his Frette sheets while acorns assault the roof and frogs serenade him to sleep.

The men hope to experience the same connection with nature once their house is completed, in 2011. Designed by noted San Francisco architect Stanley Saitowitz, the residence will consist of three glass-walled pavilions oriented around a pool. "I wanted him to translate the experience of living in the tents into a house," Lajeski says. Even if Saitowitz succeeds, Lajeski says he'll still sneak down to the tents on occasion—if only to use the shower. That is, if he can wrest it away from his guests. □





**HAVEN** made a triumphant return to Hollywood during the 2009 Awards Week in February, attracting actors, industry influencers, and media tastemakers. Over three days and nights, HAVEN transcended the traditional VIP suite experience by combining spa services, charitable projects, product demonstrations, live entertainment, fashion shows, cocktail parties and more—all under the gorgeous roof of a Mediterranean-style villa in Beverly Hills.



**SEE AND BE SEEN**

*Top Row:* Russell Simmons and Paris Hilton; there's no denying it's Paula Abdul behind those Foster Grant shades; AnnaLynne McCord coozies up to the new Hyundai Genesis.

*2nd Row:* Kendra Wilson; Kim & Kourtney Kardashian; *Milk* screenwriter Dustin Lance Black; the Moxi HD DVR brings a smile to Rosario Dawson's face.

*3rd Row:* Kelly Kelly hangs out with an American Laser Centers' specialist; Jeannine Kasper receives a manicure courtesy of O.P.I.

*Bottom Row:* Queen Latifah, Tara Jane, Taryn Manning, and Paris Hilton converge. Chris Mann performs.



**SONY**

digitaldays

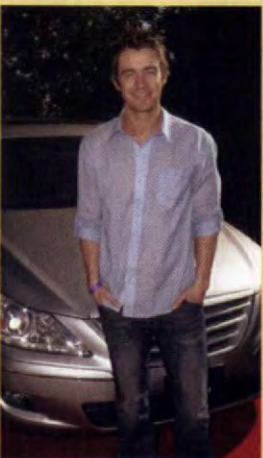
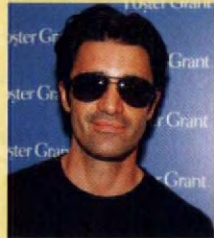


Foster Grant

O.P.I



**MOXI**



### CULTURAL CLUBHOUSE

Left to Right: a model enjoys a VelaShape treatment provided by American Laser Centers; OPI manicure; Russell Simmons Argyle Culture model wears a "Know Your Strength" necklace with Simmons Jewelry bracelet; Gilles Marini; Eva Pigford; an attendee signs up for a Digital Days workshop; Robert Buckley.



The Creative Coalition, a nonprofit organization, shot its latest campaign exclusively at HAVEN. Promoting funding of the arts in communities and schools, the campaign launched in May and includes a PSA directed by Fisher Stevens featuring budding artists from the Los Angeles Unified School District, as well as actors Taraji P. Henson, David Hyde Pierce, Zooey Deschanel, Kerry Washington, Gina Gershon, and Alyssa Milano. Print ads will highlight portraits taken by Pulitzer Prize-winning photographer Brian Smith at HAVEN. In addition, photos will be compiled in a book to be distributed on Capitol Hill to encourage policymakers to make arts in schools and the National Endowment of the Arts a top priority. Raising awareness and inspiring action, the campaign emphasizes how exposure to the arts can change lives.



Special thanks to: Warren Tricomi Haircare ([warrentricomi.com](http://warrentricomi.com)), Digital Days ([digitaldaysphoto.com](http://digitaldaysphoto.com)), Splashlight ([splashlight.com](http://splashlight.com)), Poliform Furniture ([poliformusa.com](http://poliformusa.com)), Evoque Candles ([evoque.com](http://evoque.com)), Hoover ([hoover.com](http://hoover.com)), Simmons Jewelry Co. ([www.simmonsjewelryco.com](http://www.simmonsjewelryco.com)) and flowers by Aristocratic ([www.aristocraticbytammy.com](http://www.aristocraticbytammy.com))

## Bright Whites

Our crisp collection of outdoor furniture and accessories is like a cool breeze on a hot summer day.

1. *Luna*, the translucent white resin weave covering Brown Jordan's *Monaco chair*, lends an ethereal air to an otherwise sturdy seat. The cushion is included (\$2,005; BrownJordan.com).  
2. A subtle nod to architect R. Buckminster Fuller's geodesic domes, the ceramic *Geo birdhouse*, by designer Kelly Lamb, is a chic abode for any warbler (8"x 8"x 8", \$95; Areaware.com).

3. With a name that translates as "in the shade," the *Ensombra umbrella* from Gandia Blasco is topped off with a pinwheel of phenolic plates that provide shelter on even the hottest of days (72" dia, \$2,500; GandiaBlasco.com).  
4. Sunbrella's *Renata acrylic sheer* is perfect for cordoning off your patio (118" w, through designers; Pindler.com).

5. The *Cactus planter*, designed by Giulio Iacchetti for Euro3Plast, is a polyethylene parody of the abundant desert dwellers (50" h x 31" w x 29" d, through designers; JaneHamleyWells.com).

6. Tucker Robbins's *Beaded pouf* borrows from traditional South African techniques to reinterpret a classic outdoor design (18" h x 25" dia, \$1,800; TuckerRobbins.com).



# Summer Bliss

The cool whites, brilliant hues and earthy weaves of this season's outdoor furnishings are anything but garden-variety. Produced by Callie Jenschke and Katherine E. Nelson. Written by Rachel Lexier.



# ROGERS



©2009 CHARLES P. ROGERS & CO.

New, Original and Restored Antique Beds  
and Daybeds in wood, leather, brass and iron.  
European linen and premium cotton bedding.

Illustrated: Hand-forged iron  
Paris queen sleigh bed with  
open footboard \$1599,  
Now \$999.

400 thread count Shiro prima  
cotton sheet set \$320-360,  
Now \$119 any size.

[charlesprogers.com/bedsdirect](http://charlesprogers.com/bedsdirect)

Charles P. Rogers & Co. • Bed Makers Since 1855. • Complete collection online @ [charlesprogers.com](http://charlesprogers.com) or call 866-836-6503 for catalog and sale price list.  
New York factory showroom: 55 West 17 Street (5-6 Aves) in Manhattan. • New Jersey warehouse store: 300 Rte 17 North, East Rutherford. • Web/phone orders welcome.

## Cirque du Soleil

The heat is on with this colorful circus of modern shapes and bright accents.

1. The futuristic silhouette and punchy color of Giorgio Gurioli's lacquered fiberglass **Hara chair** provide a shapely addition to your deck or patio (\$4,145; PropertyFurniture.com).

2. The powder-coated steel curlicues of the **Re-Trouvé planter**, a collaboration between Patricia Urquiola and the Italian furniture

company EMU, evoke nostalgia for lazy summer days gone by (28" h x 26" d, \$1,262; EMU.it). See "Word," p. 22, for a look at the matching garden chair.

3. Game on: Gather your friends for a little healthy competition with the **Pro bocce set** from Design Within Reach; it comes complete with a carrying case (not shown) for ultimate portability (\$200; DWR.com).

4. FLOR's **You Only Live Twice** indoor-outdoor **vinyl tiles** are 100 percent recyclable and are available in four earth-inspired hues: River Rock (not shown), Sun, Forest, and Sky (\$12.99/tile; FLOR.com).

5. The petal-shaped plastic seat and thin lacquered-steel legs of Roche Bobois's **Corolle armchair** recall a resplendent summer bloom (from \$2,645; Roche-Bobois.com).





Quality Built on Passion  
Meticulously crafted in Germany



Sliding Doors · Partition Systems · Pivoting Doors · Door Handles · Showers · Sliding Ladders · Interior

[www.mwe.de](http://www.mwe.de)

USA

Bartels USA Inc. · [www.bartelsusa.com](http://www.bartelsusa.com)  
Index-d LLC · [www.index-d.com](http://www.index-d.com)  
Specialty Doors · [www.specialtydoors.com](http://www.specialtydoors.com)

CANADA

Bucher Ltd. · [www.bucher.ca](http://www.bucher.ca)  
Richelieu Hardware Ltd. · [www.richelieu.com](http://www.richelieu.com)  
Scodesign Distribution Inc. · [www.scodesign.com](http://www.scodesign.com)

## Garden Party

These ivy-inspired goods evoke the crisscrosses of climbing vines.

1. Jean Marie Massaud's vertical **Green wall** for Dedon can transform a tight space into a breezy garden oasis. It's made of woven polyethylene fiber and comes with removable flowerpots (85" h x 48½" l x 13" d, \$2,816; Janus et Cie.com).

2. The rust-free, cast-aluminum **Garden Treasures Branches bench** creates the feeling of a forest in your own backyard (36" h x 41¼" l x 26½" d, \$277; Lowes.com).

3. Sprout Home's charming **Water Logged watering can**, made from recycled HDPE plastic, is tough enough to sleep outside with the plants and flowers (\$18; SproutHome.com).

4. Designed by Jan Egeberg and Morten Thing, the **Elements lantern** from Georg Jensen combines stainless steel and frosted glass for a lovely light that will illuminate any path (8" h, \$90; GeorgJensenStore.com).

5. Resurrected from a 1968 design by Elinor McGuire and executed in aluminum for outdoor use, the **Cracked Ice garden chair** has a distinctive back that brings to mind a shattered mirror (\$980; McGuireFurniture.com). □



2

3

4



1



5

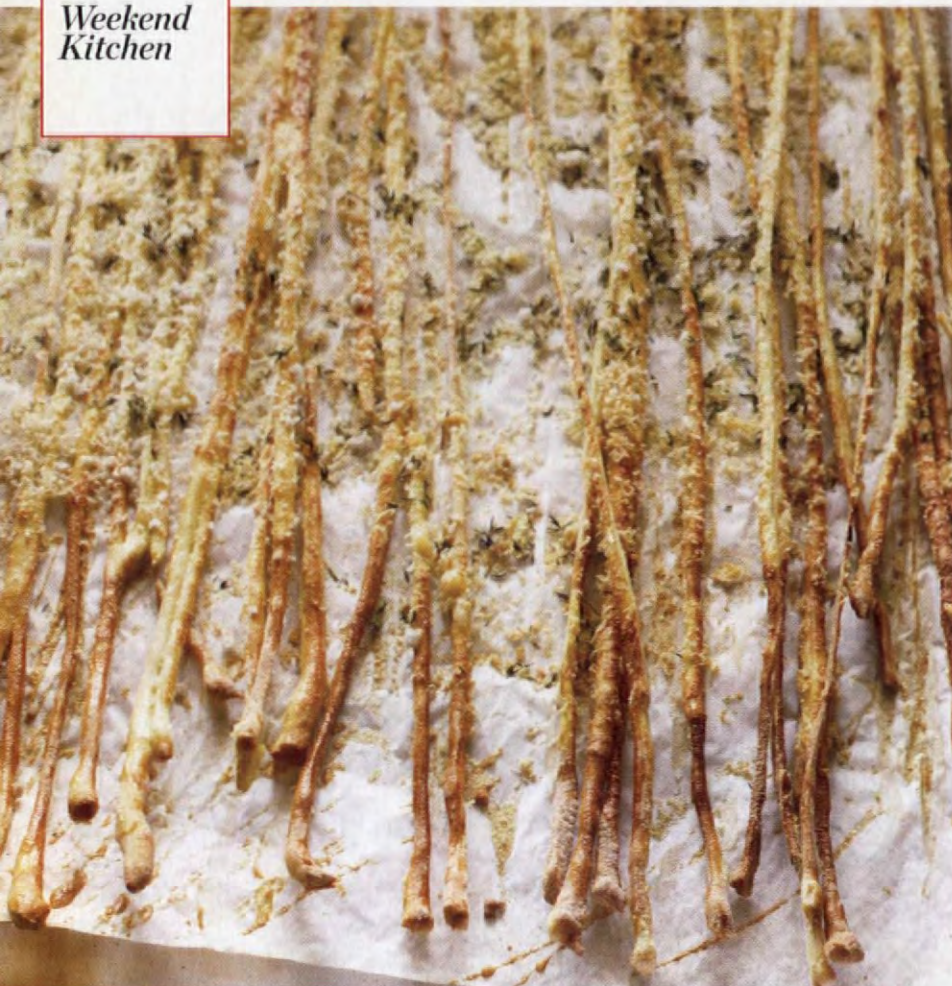
**RONBOW**<sup>®</sup>  
BATH FURNISHINGS

# Wall Mounts



BELLA 23" & Wall Mount Knee Drawer

W W W . R O N B O W . C O M



## Scampo Breadsticks

- 1 (¼ oz.) package active dry yeast (2¼ tsp.)
- ¾ cup warm (105°–115° F) water
- 2½ tbsp. olive oil
- ¼ cup semolina flour
- 1½ cups all-purpose flour
- 2 cups bread flour
- 1 tbsp. coarse salt
- 1 tbsp. olive oil
- 1 tsp. coarse salt
- ½ tsp. pepper
- 3 to 4 tbsp. grated Parmesan cheese
- 3 to 4 tbsp. fresh rosemary, finely chopped

① Combine yeast and warm water in the bowl of an electric mixer. Stir and let stand 3 minutes, until mixture is foamy. Attach dough hook or paddle, add remaining ingredients and mix to combine. (Dough should pull away from the side of the bowl. If too wet, add a little flour; if too dry, add a little water.) Mix until dough is smooth and elastic, 8 to 10 minutes. Transfer to a resealable plastic bag and refrigerate at least overnight, or up to three days.

② Line three baking sheets with parchment paper. Brush with oil or coat with nonstick spray. On a lightly floured work surface, roll dough to a 24-by-8-inch rectangle. (If dough becomes difficult to roll, let stand ten minutes to relax, then continue rolling.) Trim uneven edges with pizza cutter. Brush with olive oil and sprinkle with salt, pepper, cheese and rosemary.

③ With pizza cutter, cut strips from short side, ¼ inch wide and 8 inches long. Transfer strips to baking sheets, stretching each gently to about 10 inches in length. Cover with oiled plastic wrap and let rise in a warm place until rounded, about 1 hour.

④ Preheat oven to 350°F. Bake breadsticks until golden brown, 10 to 15 minutes. Let cool on a wire rack. Serve immediately, or keep in a closed container up to one week. *Makes 70 to 80 breadsticks.* □

# Pick-Up Sticks

Bet you can't eat just one; these savory breadsticks make a tasty—yet not too heavy—addition to the table.

**B**readsticks are thought to go as far back as the 14th century, when they were first baked near Turin, becoming part of the gastronomic tradition of Italy's Piedmont region. Today they're gaining popularity as health-conscious consumers realize that the crispy, pencil-thin sticks are a lighter way to satisfy their bread cravings.

This version, by Boston chef Lydia Shire, is served at her restaurant Scampo. Arriving at the table in lieu of bread, her breadsticks are served with a fava bean dip—a simple purée of the beans with olive oil and garlic, garnished with toasted pine nuts. Shire is a restaurateur who knows her patrons' habits, observing that "people love to take a breadstick and smooch it into the dip." But if you don't have any dip handy, the breadsticks, which are sprinkled with Parmesan cheese and rosemary before baking, are just as good plain. This recipe makes 70 to 80 breadsticks, but they keep well and are good for snacking on any time of the day.—*Donna Paul*

PRODUCED BY SUSAN TYREE VICTORIA. PHOTOGRAPH BY SUSIE CUSHNER.



ZUVO™ Water Purator™

# Clean natural water fresh from your tap.

Say goodbye to bottled water and expensive pitcher filters. And say hello to the new Zuvo Water Purator™. The easy, inexpensive way to get clean, natural great-tasting water fresh from your kitchen tap.

*"We replaced our old fridge pitcher with a Zuvo Purator and we could taste the difference immediately. It's great to have fresh water on demand without buying all those filters or cases of bottled water."*

M. Jordan  
San Mateo, California

## • Better for your health

The Zuvo Water Purator mimics nature's water-cleansing process, reducing contaminants while preserving your water's natural and healthy mineral content.

## • Better for your wallet\*

Over time, Zuvo costs a fraction of what you'll spend on bottled water or pitcher filters.

## • Better for the planet

With Zuvo, you can make a difference by not adding to the more than 60 million plastic water bottles that end up in our landfills every year.

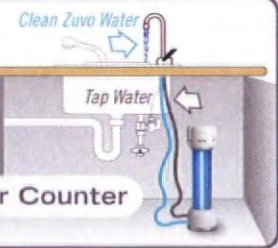
\*Within 2 years of ownership based on 1000 gal/year water consumption.



### Above Counter



The Zuvo Water Purator is quick and easy to install above or under your counter.



### Under Counter

**Clean natural water starts here.**  
**1-888-839-3702**

Or visit [www.zuvowater.com](http://www.zuvowater.com)

Call today to purchase the Zuvo Water Purator for just \$299.99.

### FREE OFFER!

Act now and receive a bonus filter and two stainless steel water bottles – an \$80 value absolutely free!

# trade exchange

IDEAS, INFORMATION AND  
INSPIRATION FROM DESIGN  
INDUSTRY INSIDERS

special advertising section



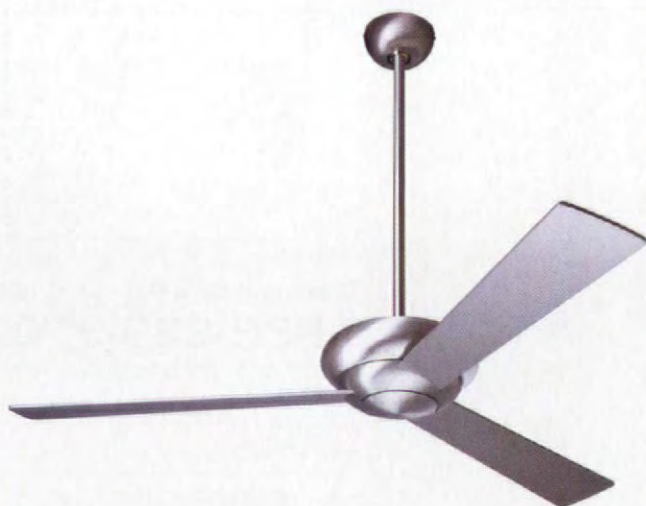
**BDI**  
703•803•6900

[www.bdiusa.com](http://www.bdiusa.com)



**SUNBRELLA**  
800•788•4413

[www.sunbrella.com](http://www.sunbrella.com)



**MODERN FAN**  
888•588•3267

[www.modernfan.com](http://www.modernfan.com)



**VIOSKI**  
323•937•7741

[www.vioski.com](http://www.vioski.com)

VISIT THE DESIGNER SPOTLIGHT ON THE MODERN MIX FOR MORE TRADE SECRETS AT [WWW.METHOME.COM](http://WWW.METHOME.COM)

the indoors and outdoors  
are forever **UNITED.**

Sunbrella® is a registered trademark of Glen Raven, Inc. Indoor sofa by LEE Industries, outdoor sofa by Summer Classics®, rug by CMI Colonial Mills, Inc.®, throw by Textility Weavers®, sheen by Casa Froid® and decorative fabric available through SilverState fabrics™.

The new generation of Sunbrella® performance fabrics and accessories has forever blurred the lines between indoor and outdoor living. Bring the ease of cleaning and fade resistance inside or take decorative luxury outside – the choice is yours. When you live with Sunbrella fabrics, you can have the ultimate in beauty, durability and cleanability in any environment. For more information and a wealth of inspiration, visit [www.sunbrella.com](http://www.sunbrella.com) or contact a design professional.

OUTDOOR FURNITURE · INDOOR FURNITURE · WINDOW TREATMENTS · RUGS · THROWS

  
sunbrella



AVION SERIES II  
MODEL 8928

## THE CENTER OF ENTERTAINMENT

BDI's award-winning Avion collection evolves to the next generation of home theater excellence with Avion Series II. Designed to integrate the home theater beautifully into the home, Avion is beautiful cabinetry to be sure. But beneath the surface there is a world of innovation. Hidden wheels, superior cable management channels, and removable back panels make set-up a breeze. IR friendly doors provide remote access, while flow-through ventilation keeps air moving. Add in concealed compartments for speaker and media storage, and Avion Series II sets the standard for home theater superiority.

[WWW.BDIUSA.COM](http://WWW.BDIUSA.COM)

**BDI**



25

YEARS OF HIGH PERFORMANCE FURNITURE



Consciously cool.

[modernfan.com](http://modernfan.com)

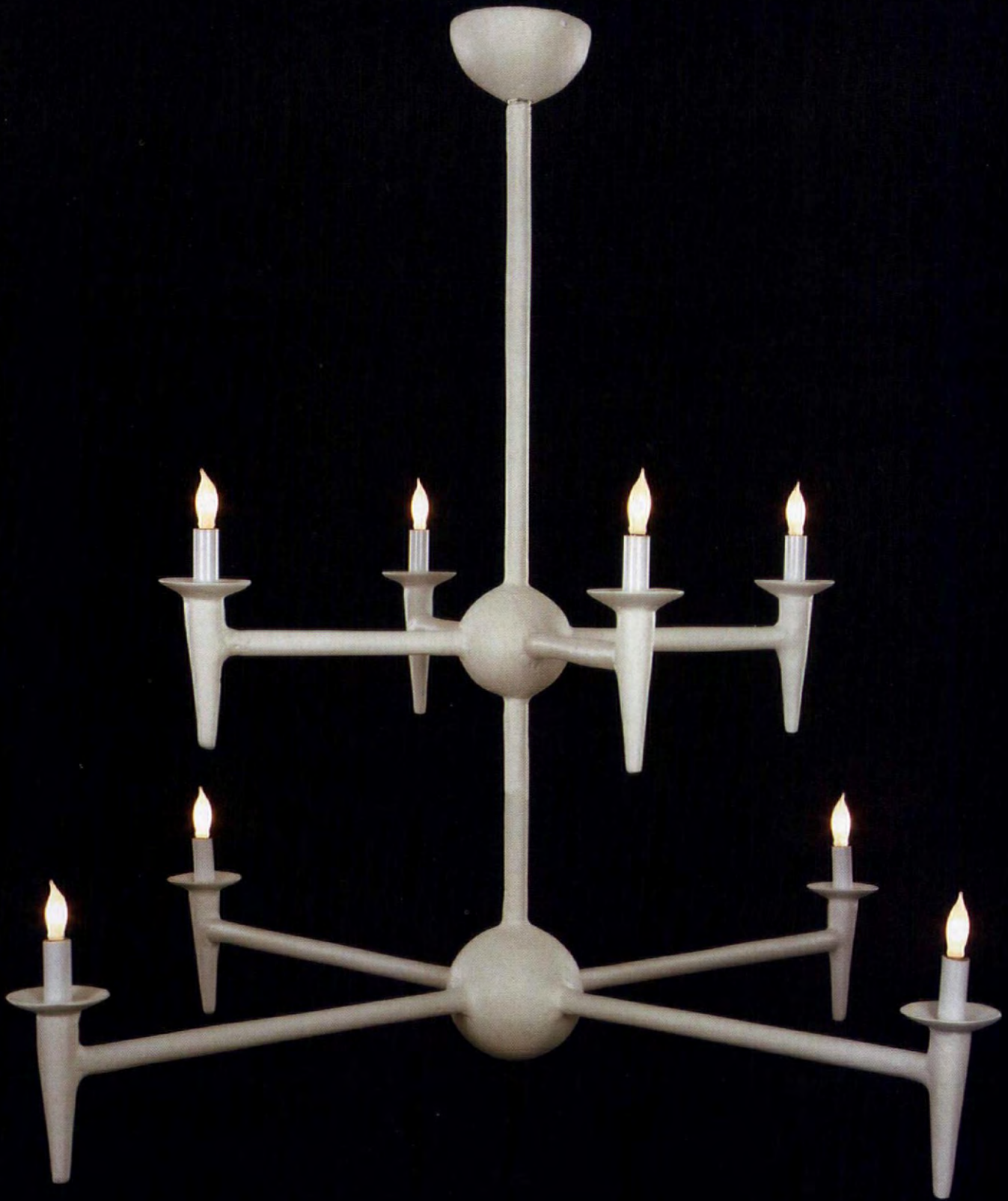




## Shelf-Contained

An Atlanta designer turned an awkward closet into a display space for a collection of art and glass.

Although it's not always easy to give up even an inch of storage, designer Jill VanTosh managed to repurpose an underused closet in her client's Atlanta home into a recessed art gallery. VanTosh saw this half-empty space—with another closet down the hall and a laundry room with storage opposite it—as the perfect spot to highlight some of the more delicate pieces in homeowner Terry Libin's expansive collection (MH, Mar '08). Thick, richly stained mahogany shelves now fill the six-by-three-foot nook, creating crisp lines on the light walls and a safe display area for colorful objets d'art. This unexpected transformation goes to show that thinking outside the box may be the key to designing inside one. —Produced by Lisa Mowry. Written by Flannery Hoard. See Resources, last pages. □



Bourgeois Bohème  
Atelier

330 North La Brea Avenue, Los Angeles, CA 90036 - 323.936.7507 - [www.bobointeriors.com](http://www.bobointeriors.com)

# SUZANNE FELSEN

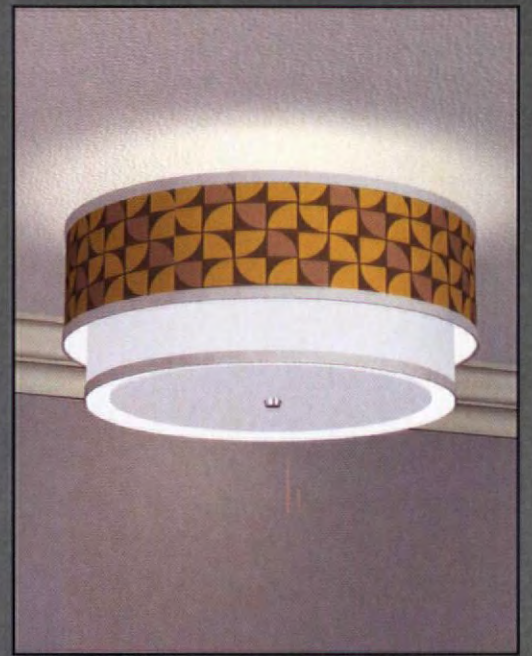
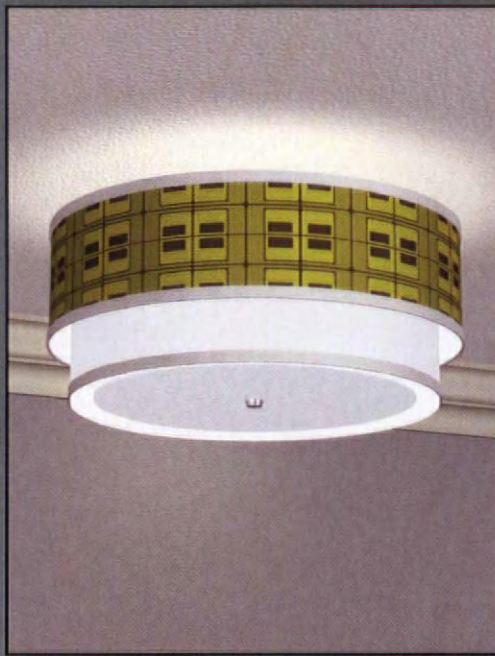
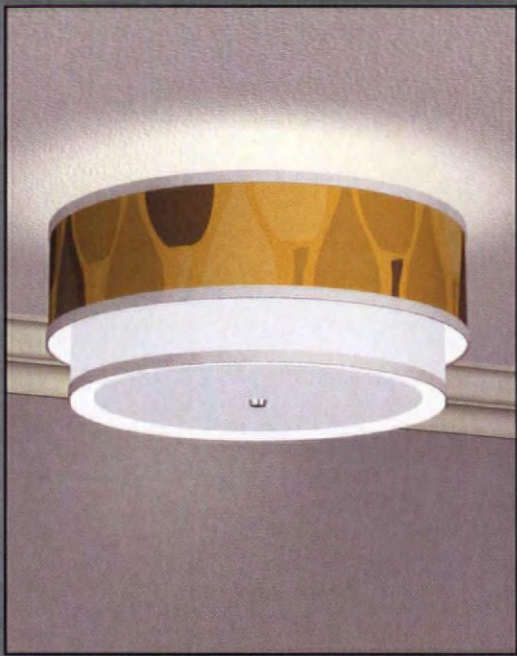


eighteen karat *yellow gold* R I N G S  
citrine • fire opal • peridot

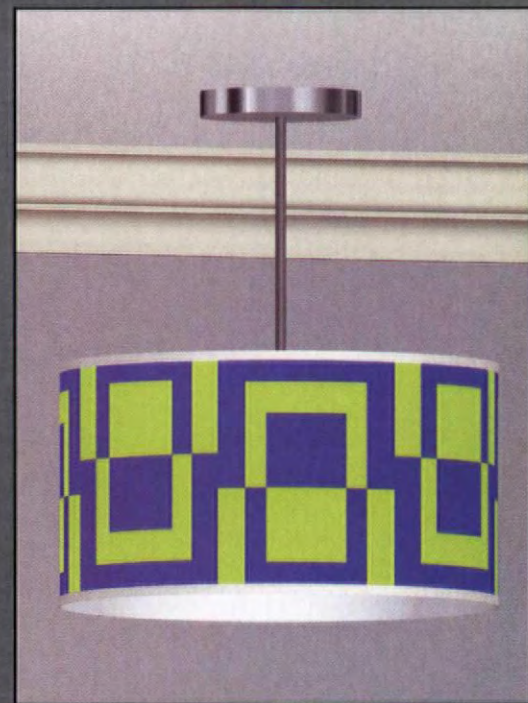
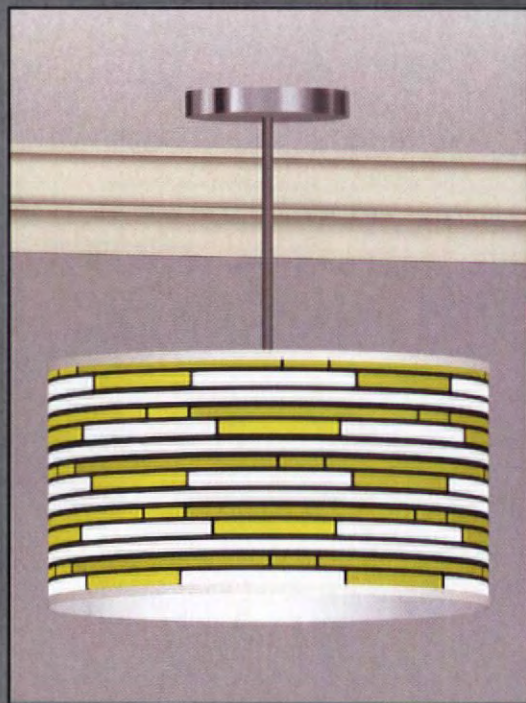


[suzannefelsen.com](http://suzannefelsen.com)

**SUZANNE FELSEN** Los Angeles • Santa Monica 323 653 5400  
**BERGDORF GOODMAN** New York City 212 872 2518



design your lamps at [seascapelamps.com](http://seascapelamps.com)



seascope

800 444 0233



LACAVA®

LUXURIOUS ELEGANCE AT HOME



photo francesco grossi

DOLCEVITA collection\_designed by paolo demarco

DE170 vanity DE170I countertops 4033 washbasin 3531 mirror 0620 faucet

be green: buy quality

lacava.com 888.522.2823



CRAIG VAN DEN BRULLE





**Duo-Not Entertainment Unit**

*finished in cerused rift oak, satin lacquer and triple-fired glass porcelain  
available in custom sizes, custom color and custom design*

CELEBRATING  
**40** YEARS

 **CLIFF  
YOUNG** LTD

**FURNITURE FOR  
MODERN LIFESTYLES**

[www.cliffyoungltd.com](http://www.cliffyoungltd.com)

200 Lexington Ave., Suite 505 / NY, NY 10016  
tel **212 683 8808** / fax **212 683 9286**



# ARE YOU SITTING DOWN?

Our beautiful designs will knock you off your feet.



**VIOSKI**



**usona**  
home furnishings

113 South 16th Street Philadelphia, PA 19103 215.496.0440 [www.usonahome.com](http://www.usonahome.com) [info@usonahome.com](mailto:info@usonahome.com)



## A FOUNTAIN OF YOUTH

IN A CONVENIENT TAKE HOME SIZE

In a SwimEx Luxury Pool or Spa you can relax, exercise, even entertain in your own heated pool without the expense, maintenance or space of a full-sized pool. SwimEx is beyond the ordinary lap pool, it's a complete workout station. Ruggedly constructed and exquisitely detailed, SwimEx pools add value and enhance the beauty of your home.

**SwimEx**<sup>®</sup>

CALL 800-877-7946 FOR A FREE HOME  
POOL DVD OR VISIT [WWW.SWIMEX.COM](http://WWW.SWIMEX.COM)

# Discover A Whole New World With Rosetta Stone!



dei fiori su un balcone

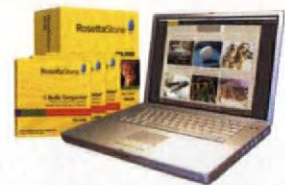
delle persone in una gondola

Arabic • Chinese (Mandarin) • Danish • Dutch • English (American) • English (British) • French • German • Greek • Hebrew • Hindi • Indonesian • Italian • Irish • Japanese • Korean • Latin • Pashto • Persian (Farsi) • Polish • Portuguese (Brazil) • Russian • Spanish (Latin America) • Spanish (Spain) • Swahili • Swedish • Tagalog (Filipino) • Thai • Turkish • Vietnamese • Welsh

Rosetta Stone® brings you a complete language-learning solution, wherever you are: at home, in-the-car or on-the-go. You'll learn quickly and effectively, without translation or memorization. You'll discover our method, which keeps you excited to learn more and more.

- You'll experience **Dynamic Immersion**® as you match real-world images to words spoken by native speakers so you'll find yourself engaged and learn your second language like you learned your first.
- Our proprietary **Speech Recognition Technology** evaluates your speech and coaches you on more accurate pronunciation. You'll speak naturally.
- Only Rosetta Stone has **Adaptive Recall**™, that brings back material to help you where you need it most, for more effective progress.
- And Rosetta Stone includes **Audio Companion**™ so that you can take the Rosetta Stone experience anywhere you use a CD or MP3 player.

Innovative software. Immersive method. Complete mobility. It's the total solution. Get Rosetta Stone — **The Fastest Way to Learn a Language. Guaranteed.**



**SAVE 10%!**

**100% GUARANTEED  
SIX-MONTH MONEY-BACK**

Level 1	Reg. <del>\$259</del>	NOW \$233
Level 1&2	Reg. <del>\$419</del>	NOW \$377
Level 1,2&3	Reg. <del>\$549</del>	NOW \$494

©2008 Rosetta Stone Ltd. All rights reserved. Offer applies to Personal Edition only. Patent rights pending. Offer cannot be combined with any other offer. Prices subject to change without notice. Six-Month Money-Back Guarantee is limited to product purchases made directly from Rosetta Stone and does not include return shipping. Guarantee does not apply to an online subscription or to Audio Companion purchased separately from the CD-ROM product. All materials included with the product at the time of purchase must be returned together and undamaged to be eligible for any exchange or refund.

**Call  
(866) 785-7010**

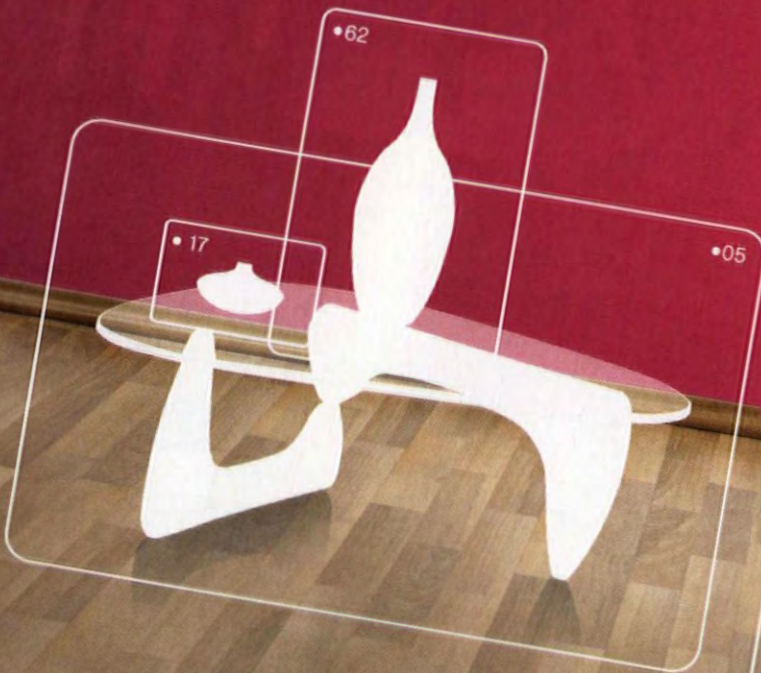
**Online  
RosettaStone.com/yns079**

To get this offer, use promotional code yns079 when ordering.  
Offer expires November 30, 2009.

**RosettaStone®** 



# DESIGN YOUR DREAM



LX+TV  
**OPEN  
HOUSE**

YOUR WEEKLY DESIGN AND REAL ESTATE GUIDE  
SUNDAYS ON NBC AND ALWAYS ON [LXTV.COM](http://LXTV.COM)

CHECK YOUR LOCAL LISTINGS



A high-angle photograph of a wooden dock extending into a body of water. A white kayak with the word 'HERITAGE' on its side is moored at the dock. A white paddle lies on the dock next to it. In the foreground, a tan bag sits on a stack of folded towels. The water is dark and reflects the light.

## Metropolitan Home July/Aug 09 Summer Living

Everyone has a different summer fantasy: A cabin in the woods, an oceanfront cabana, a lake house with a private dock. If we're fortunate, we may actually get to live out our fantasies, the more sedentary among us content to sit with a good book on the beach while our more active loved ones spend their leisure time windsurfing offshore. But no matter how we enjoy July and August, chances are that many of the lazy, hazy days will be spent outdoors. Indoor/outdoor living is now so much a reality all over the country and all year-round that "summer style" has replaced "summer season" as a design term. All of the homes on the following pages offer great ideas for opening up to nature, in town or countryside. We hope you'll take the issue with you, wherever you're headed, and enjoy it from your favorite hammock or deck chair, kayak or canoe. Have a great summer!—*The Editors*

Interior designer Amy Lau (pictured) used a steel wall as a backdrop for her own bright *Lilypon* mirror, a vintage hanging cabinet by Florence Knoll and a pair of stools by Edward Wormley. The colorful German pottery is known as lava glaze because of its landscape-like effects. The house—a collage of cedar, local stone, translucent fiberglass and zinc-covered copper—was built by Resolution: 4 Architecture over an existing foundation.





*The Art of Compromise* A couple with very different dreams for their rural New York weekend house got everything they wanted from **Resolution: 4 Architecture** and interior designer Amy Lau.







*In their 20 years as partners, architects Joe Tanney and Robert Luntz have designed dozens of sleekly modern houses (plus dozens more lofts*

and apartments). Among the trademarks of their firm, which is called Resolution: 4 Architecture, are interior walls of hot rolled steel. In this upstate New York weekender, one such wall anchors a corner of the living room, where the architects knew it would pop against the floor-to-ceiling glass and the maple floorboards.

But even Tanney and Luntz didn't know how good the wall would look until the owners, Charles and Xiomara Scheidt, brought in Amy Lau as their interior designer. To enliven it, she chose an inexpensive abstract painting that she purchased on an auction website. Like the room around it, the painting is autumnal: Lau first visited the house on a bright fall day and was inspired by the orange, red and yellow leaves visible everywhere. And, like the room around it, the painting is dynamic, suggesting motion in the same way Lau's furniture arrangement energizes the simple glass-enclosed space.

A founder of Design Miami, Lau has an encyclopedic knowledge of 20th-century decorative arts. In implementing her plan for the Scheidts' house, Lau says, she was as much a curator as a decorator, including pieces by both well-known designers (the sectional sofa is by Edward Wormley for Dunbar) and lesser-known greats like Denmark's Greta Jalk, who designed the swoopy chair and ottoman. Thanks to the architecture—which is restrained, modern and at the same time lively—the furniture feels right at home.

Architects Tanney and Luntz provided the ideal setting for a sophisticated mix of furnishings by interior designer Amy Lau, who gave the room a midcentury vibe that complements the architecture. The understated rug and "cigarette table" are her own designs; the sectional sofa is by Edward Wormley, the coffee table by T.H. Robsjohn-Gibbings. Lau chose swivel chairs by Harvey Prober to allow guests to choose their view. The *Triennial* floor lamp is from Arredoluce.

PRODUCED BY SUSAN VICTORIA. PHOTOGRAPHS BY JOSHUA McHUGH. WRITTEN BY FRED A. BERNSTEIN.



*Homeowners Charles and Xiomara Scheidt were looking for a getaway not far from New York City, but they didn't have exactly the same getaway in mind. As Tanney recalls: "He wanted a vernacular Adirondacks cabin, but she wanted*

a modern Manhattan loft." So the architects gave them a little of each. Says Tanney: "The stone and wood are for Charles; the glass and steel for Xiomara."

The house was already under construction when the Scheidts brought in Amy Lau. "I tried to have a dialogue with the architecture," says Lau. In the dining area, where the architects provided a simple maple wall, Lau responded in kind, choosing a Jens Risom table that makes the most of a single slab of rosewood (a table with leaves, she explains, wouldn't have the same power).

Over the table is a chandelier that suggests fall foliage. Lau found it at an antiques fair. Once the fixture was installed, she learned that breezes through the house cause it to rustle gently. The house picks up the energy of the landscape, with the light fixture being the most literal example.

Even in the kitchen, where functional requirements could have intruded on the design, the architects relied on their years of experience to achieve the cleanest possible lines. For instance, they placed air vents in the toe kicks beneath the counters, rather than on walls or ceilings, which is both more usual and more visually intrusive. The Resolution: 4 architects also avoided upper cabinets in order to maximize window space. Shelves hanging from tie rods seem to float above the lake. Lau did her part by arranging small, translucent objects that dazzle the eye but don't stop it from taking in the view.

||||| This page (from left): In the kitchen, cabinets are maple, countertops are Absolute Black granite and backsplashes are stainless steel (the bar stools are by Erik Buck); architects Robert Luntz (left) and Joe Tanney. Opposite: In the dining room, which features a Jens Risom table and Hans Wegner chairs, the architects embedded a wine rack high in a maple-paneled wall.





*“We fell in love with the site,” says Xiomara, explaining how she and her husband acquired a 1940s bungalow an hour north of New York City. But the building, which was falling apart, was no match, aesthetically, for the*

waterfront property. “We’d go out to the lake and we’d come back and be all depressed,” she says. Friends recommended architects Luntz and Tanney, who have made a specialty of creating modern houses that are smartly detailed and yet surprisingly affordable to build. Their firm has designed dozens of prefabricated houses, valuable experience for creating sleek details that can be reproduced at modest cost. In this case, they retained the original foundation to avoid unnecessary expenditures.

Above the foundation they created a 2,400-square-foot house with large and small windows carefully located in relation to the sun’s movement. Take the tiny window in the corner of the guest room (above). The architects positioned it “to allow views up into the trees, but not out onto the private guest deck,” says Tanney. “More important,” he adds, “it faces south and allows a controlled

beam of light to trace a path across the interior. At midday, the sun hits the back wall, reflecting light into the room.”

Not surprisingly, Lau was determined not to upstage the carefully thought-out architecture with the interior design. That’s why she painted the bedroom white rather than the vibrant colors she often specifies. And the items she chose for the room, including a Swedish rya rug, a hand-embroidered throw by Judy Ross and a wooden ball lamp by Muriel Coleman, are intriguing without being overpowering. Says Lau of the architects, “We didn’t work together, but it’s seamless.”

||| This page: Kalwall panels on the front of the house mean even private areas are flooded with light. The dresser in the guest bedroom is from Paul McCobb’s Planner Series, said to be the best-selling modern furniture line of the 1950s. ||| Opposite (from top): The master bathroom opens directly onto the rear deck, which overlooks a ground-floor terrace stretching across the back of the house.



### What the *Pros* Know

The master bathroom contains a barely there shower “stall” consisting of a single piece of glass to contain the spray. The architects had a sheet of  $\frac{3}{8}$ -inch tempered glass cut two inches longer than the room is tall. That enabled them to insert the top and bottom of the glass into recessed aluminum channels. When the ceiling and floor were finished, the metal channels disappeared. The floors and walls are covered in six-inch slate tiles, which are tricky to install on a floor that has to slope toward a

drain from two directions. (If you’re not sure your contractor will get the slope just right, Luntz recommends using one-inch “mosaic” tiles, which are easier to manipulate on angles than the larger slabs.) The architects’ most important tip: If you aren’t having curbs around the shower area, you have to keep the water draining quickly. For that, use a three-inch, rather than the usual two-inch, drain, or even a pair of three-inch drains, says Luntz, who adds: “You can never have too much drain.”





1



2

## Details

**(1)** Shelves hung across the windows display small objects and thus superimpose inside over out. The architects used mainly maple for built-ins, with an occasional mahogany layer for contrast. Interior designer Amy Lau chose the Maillol-like sculpture and the red vessels by Finnish designer Kaj Franck.

**(2)** The architects thickened the low wall along the stairway, which gave them a place to run ductwork needed to heat and cool the living room. It also turned the wall into a display shelf for mouth-blown glass from the owners' collection.

**(3)** The house has just two compact bedrooms; one of them doubles as a home office. Lau chose a rosewood and steel Danish modern desk and a lamp by Heifetz.

**(4)** While the side of the house facing the lake is mostly glass, the side facing the road is largely Kalwall, a fiberglass material that resembles shoji screens. But the architects interrupted the Kalwall for what they jokingly call a "FedEx window." Luntz explains: "You use it to see if there's a delivery truck in the driveway."

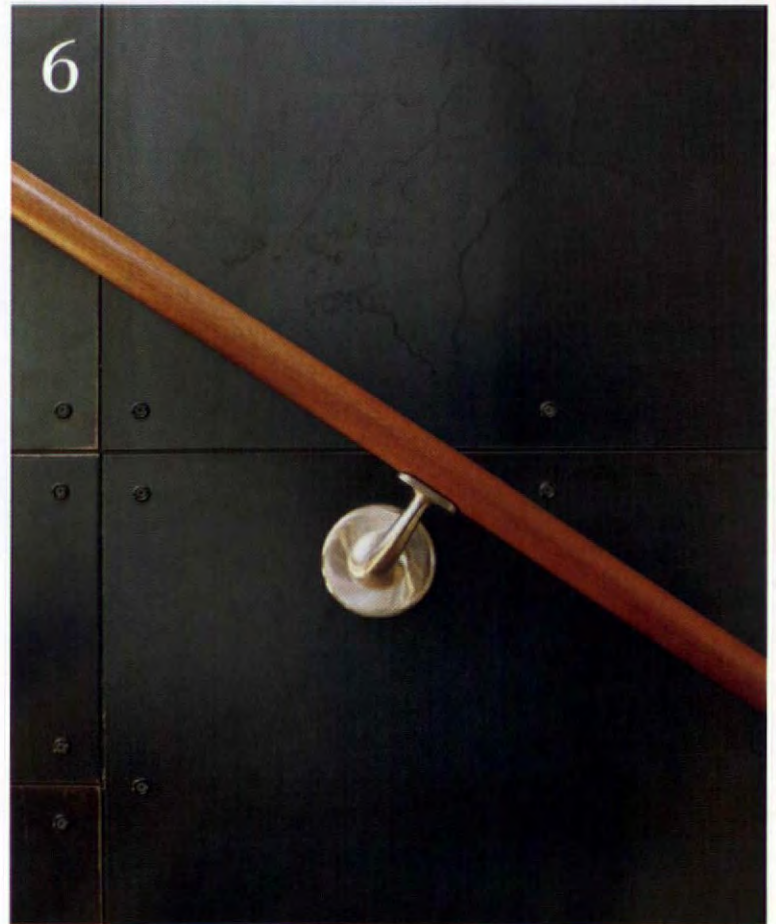
**(5)** The guest bedroom is another evocation of fall colors. Lau hung a double-headed scone by David Weeks. The beds are by George Nelson; the night table is by Paul McCobb.

**(6)** Over the years, the architects have created dozens of walls of hot rolled steel, coated in what they call their "special sauce" (consisting mostly of Old Village polyurethane). The mahogany railing becomes a bright diagonal across the dark metal surface. ▣

*See Resources, last pages.*



4



# Life on

A Texas couple found bliss at their compound home in the



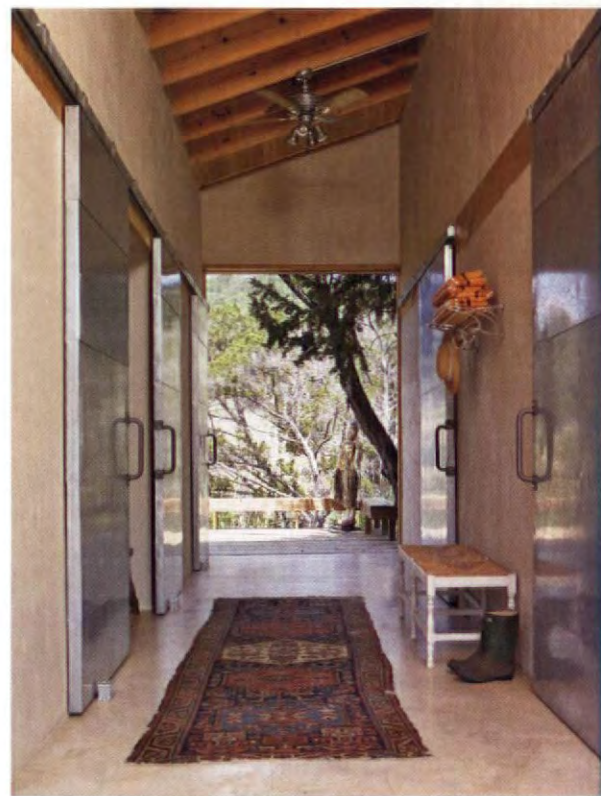
# Cloud 9

Texas Hill Country, where nature is revealed and revered.



The house that Ted Flato designed for Pete and Lyn Selig consists of three separate buildings, one of which is cantilevered over the water. Two creeks, Flora and Fauna, feed into the 35-foot-deep man-made lake, created in the 1950s, after a seven-year drought. Now it serves as a swimming hole for the Seligs and their guests. The buildings, measuring about 3,000 square feet, including both indoor and outdoor living spaces, occupy a fraction of a ranch that is its own ecosystem, home to smoke and cherry trees as well as less common viburnum and walnut. Photograph by Chris Cooper





**Pete and Lyn Selig** are on Cloud 9—the name the San Antonio entrepreneur and his wife gave to their Hill Country getaway, a three-building compound that celebrates the unspoiled beauty of their 675-acre spread. Cloud 9 has deep canyons that harbor an intriguing diversity of trees and also create drama. “Winds push up from the canyons,” Pete says, “making for turbulence and lots of rain.” Cedars, sometimes considered a nuisance in Texas, are ubiquitous. For Pete, who is the chair of the Texas Nature Conservancy, they are a plus, however. The trees’ exfoliating bark is the nesting place for 16 breeding pairs of the endangered golden-cheeked warbler, a charismatic species that’s the poster child for the fragility of the bird population. “They won’t live in just any tree,” notes Selig proudly.

Both the Seligs, the parents of an adult son, grew up in San Antonio and spent the summers of their respective youths in the hills of central Texas. Pete attended camp in the area, and his love of the place is rooted in happy boyhood memories of his up-close exposure to the land’s glories. The wide-open house, designed by Ted Flato of Lake/Flato Architects, makes for about 3,000 square feet of combined indoor-outdoor living space that imbues all who visit with the sense that nature has exceeded itself, which is exactly what the architect had in mind. “The house Pete asked me to design,” says Flato, “was just an excuse for him to be outdoors.”

Left: The star of the main building is a six-ton dry-stack limestone fireplace; doors on either side open onto a 50-foot-long arbor leading to the bunkhouse. A white “wall form” by Caprice Pierucci Taniguchi reminds Selig of a surreal version of the animal bones found on the property. Top: Access to the bedrooms, bathroom and kitchen in the bunkhouse is through galvanized-metal barn doors, a Lake/Flato trademark; at the end of the open hall is the outdoor shower.

PRODUCED BY SUSAN TYREE VICTORIA AND HELEN THOMPSON. PHOTOGRAPHS BY COLLEEN DUFFLEY. WRITTEN BY HELEN THOMPSON.

**Pete Selig had been** looking for land for a year and a half. After touring 40 ranches, he got a call from their real estate agent. "When she described this piece of property on the phone," says Pete, "I knew immediately it would be good." Lyn's reaction to the place was the same as her husband's. "I was astonished at the rough terrain and stunned by the views," she recalls. The couple wanted to conserve it all, so for starters, they established a conservation easement that will prevent future subdivision or roads. As for a house, they wanted something that would make the least negative impact on the surroundings.

If there is one firm that could accommodate Pete's desire for a house that sat lightly on the land, it is Lake/Flato Architects. The San Antonio practice, the winner of a prestigious annual AIA National Firm award, has deep ties to the vernacular backstory of Texas and famously strives to construct sustainable environments, with buildings meant to endure. Both the architect and his clients saw the new residence the same way: "I wanted the house to be like a camp," notes Pete. "I thought it was important that we had to walk outside to get to the bedrooms." Dividing a house into a series of smaller buildings is a favorite strategy of Lake/Flato. "When you have a compound," notes Flato, "the effect on the site isn't so overwhelming." Flato put on paper other must-haves for the stucco, glass and metal threesome of buildings: a 40-by-25-foot main living pavilion surrounded by a partly covered terrace, a two-bedroom bunkhouse, and a "boathouse" right on the lake.

||| A row of north-facing windows runs along the ceiling in the kitchen corner of the open main pavilion, where Spanky, the French bulldog, has a drink. Both the Seligs and their interior designer, Elizabeth Ridenhower, wanted to keep things simple. Open shelving and custom alder cabinets with galvanized-metal countertops cover the basics of storage and preparation. The work island is a commercial prep table; stools are from Room and Board.









**To help fill their** new spaces, the Seligs called in Elizabeth Ridenhower, a San Antonio designer who had worked for them in the past. In a decidedly un-decorator-like fashion, she pronounced that furniture wasn't what this house was about.

"Cloud 9 is about shape and space," she says. "I thought that furniture was secondary."

However, she did cull pieces from the couple's extensive collection of antiques to come up with an unorthodox mix of elegance finessed with the mundane. In the living room, rush-bottomed English chairs and their companion mahogany gateleg table (from Pete's grandmother) share space with galvanized-tin benches. Ridenhower also specified that other accoutrements, like the family sofas she slipcovered in white, had to be big and neutral.

Not that hands-on Pete Selig didn't have an eye for detail. "The doors are wood," he says, "but I wanted them to have a glimmer of

metal to reflect what the roofs are made of. I got a bottle of silver flecks from the art supply store and mixed it with blue paint and hand-painted the door frames myself."

Behind the towering indoor fireplace is another one; it's outside and much simpler, but it's a favorite place to gather around after dinner. It anchors the arbor that connects the living/dining building to the bunkhouse. Like a see-through hallway, the rusted steel-frame arbor has a job to do. "The soon-to-be vine-covered allée locks the house into the site and organizes the barren hill. It's a quick way to landscape," notes Flato.

||| This page: The view of the main house from the bunkhouse is through an arbor made from oil-field pipe and hog wire: "It's like a grand hallway," says Flato, "that will have a luscious ceiling of vines." Opposite: "It's a porch, but not a porch," says the architect about the south-facing terrace. The Seligs especially enjoy the six-foot overhang during big storms: "The sound of rain on the metal is like an artillery attack," Pete says. Chairs are from Smith & Hawken.



**And the third building?** “It’s my favorite,” confides the architect, speaking about the wood structure that is separated from its two fellow buildings by a winding track around a hill. “I really wanted to have a sleeping porch,” says Pete Selig, who got that and more. He dubbed the resulting split-level Agua Casa, Spanish for “Water House.”

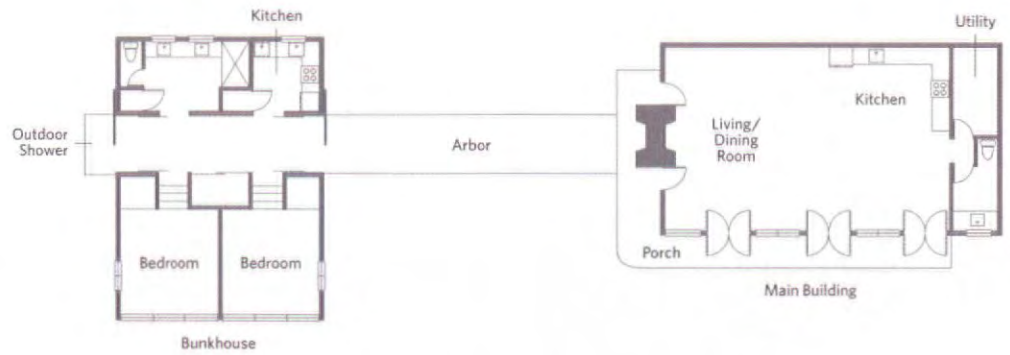
A steeply pitched, galvanized-metal roof (the slope matches the ascent of the hill next to it) hovers over the 800-square-foot open-air pavilion. As requested, on the ground level there is a sleeping porch, screened to keep out mosquitoes and other airborne nuisances. Below, a dining area makes alfresco meals a breeze. “It’s a room that’s completely integrated with the lake,” notes Flato. “You can swim right out of the house.”

The deceptively utilitarian pavilion revels in its transparency, opening up to the spectacle of the lake, clouds on high and raptors

surfing the wind currents. But that’s the name of the game around here. Materials are nonchalant, such as the screens on the sleeping porch, which constitute a subtle scrim between nappers and the harsh afternoon light. Sofas are covered in practical but attractive Sunbrella outdoor fabrics.

“When friends come to visit, they always start wandering off, to swim, to read someplace or to nap,” Pete says. “We tell them to be back for lunch. So it really is like being at camp.” That’s a nice day for a child. But for an adult, it’s the kind of day you dream about. **▣** *See Resources, last pages.*

This page (from left): The lakeside pavilion, or Agua Casa as it is known (unusually high rainfall once swept the dock away, but the Seligs’ grown son, Stuart, and his friends towed it back); the open-air dining area (chairs from Heller). Opposite (from left): Pete Selig lounges in a favorite reading spot. “I also sleep out here,” he says; cots are set up on the upstairs sleeping porch, definitely no-frills and reminiscent of summer camp.



### What the **Pros** Know

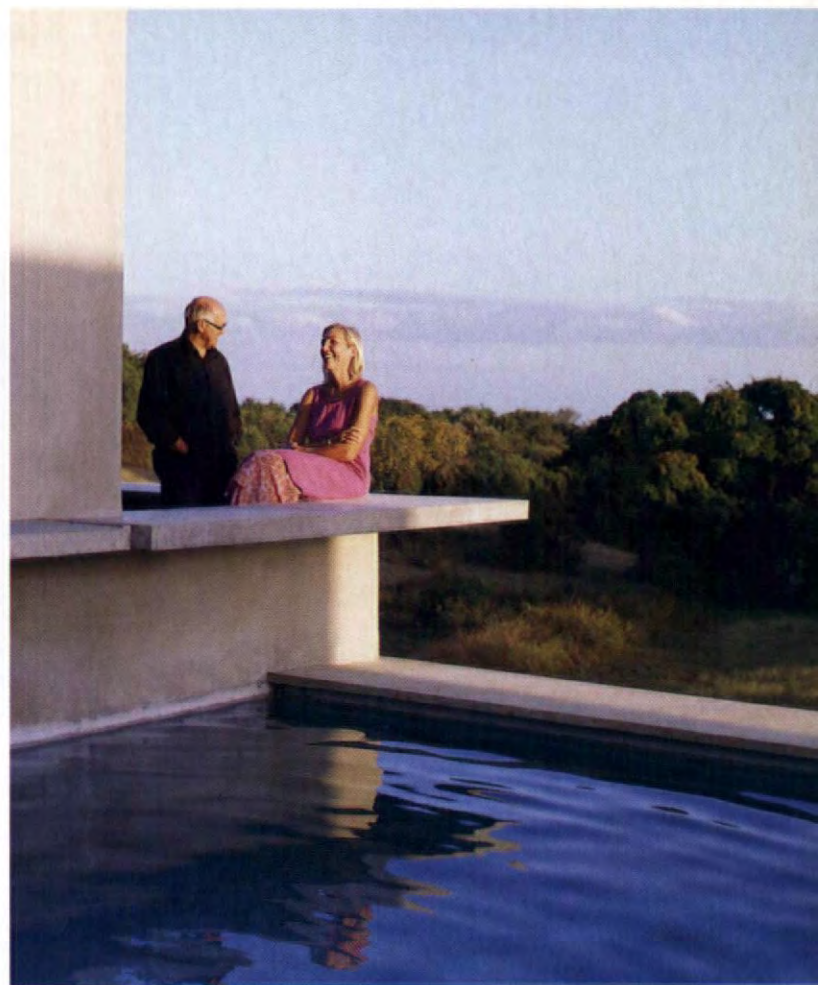
Architect Ted Flato has the process down cold when it comes to keeping Texas heat at bay. He and David Lake are adamant in their belief that the environment isn't something to avoid. The firm likes to design houses near water so that cooling breezes can waft through them. Their buildings are often one room wide to enhance ventilation (helped by ceiling fans). High ceilings with cupolas create a thermal draw to let hot air out.

But, Flato admits, the moment always comes when the air conditioner seems the only option. "It's in August and usually at night, when it's too hot to sleep," he notes. Flato hopes his clients will resist. "The minute you cool your body down with air-conditioning," he warns, "you never want to go back outside." His advice? Jump in a river (if you live in the city, a cold shower will do). "You'll cool off and go right back to sleep."



Connecticut homeowner Donna Gorman brightened the concrete architecture of her Puerto Rican vacation place with vibrant colors and bold furniture. Classic molded Panton chairs from Vitra surround a custom, cast-concrete dining table. The colorful cushions perched on the outdoor-grade furniture by Paola Lenti are from Gorman's own textile collection; photographs too are by Gorman. Opposite: The designer and her architect, John Hix, share a laugh on the terrace outside one of two identical bedrooms that overlook a pool between the wings of the U-shaped house.





# *Island Outpost*

*On pastoral Vieques, a dot in the Caribbean Sea just east of **Puerto Rico**, textile designer Donna Gorman enlisted local architect John Hix to help her create an eco-friendly and low-maintenance family getaway.*



## *Textile designer Donna Gorman and Swedish-born financier Roger Johansson discovered the empty, pristine beaches and*

bucolic countryside of sleepy Vieques, Puerto Rico, in the mid '90s—back when two-thirds of the island was still used by the U.S. Navy as a site for live-ammo maneuvers. Five years ago, the couple having married and the Navy having decamped, the pair bought a one-and-a-half-acre parcel on the island's pastoral south side, overlooking grassy hillsides where wild horses graze and a sliver of the blue Caribbean beyond.

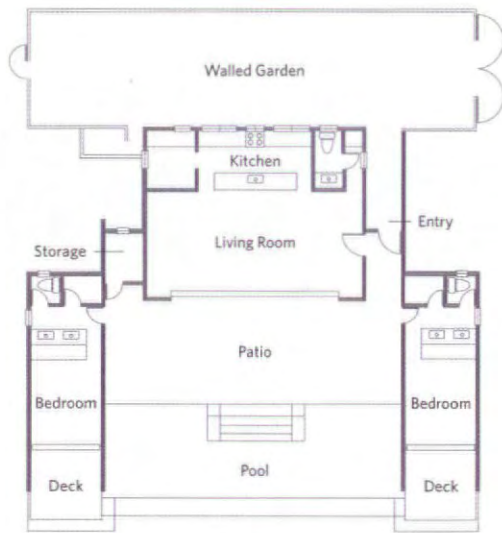
"We bought the land but didn't really have a plan for building a house," says Gorman, who spent more than two decades at the legendary Finnish design house Marimekko. "But we knew that whatever we built, John Hix would design it."

Hix, a Toronto-area architect who studied with master modernist Louis I. Kahn, spends part of the year on Vieques, where he and his wife, Neeva Gayle, own the small, eco-friendly Hix Island House. On regular visits to the hotel, Gorman, Johansson and

their two daughters experienced the architect's environmentally conscious aesthetic firsthand: simple structures that are built of low-maintenance and hurricane-proof concrete, with rough-and-tumble finishes and not a pane of glass in sight—only rolling industrial steel doors and metal-louvered windows separating inside and out. Like most of Hix's houses, this one emphasizes indoor-outdoor living, with open-air showers and sweeping terraces that meld with interior spaces.

The pool almost flows right into the open-plan living/dining room. Cooling trade winds blow through the dramatically large opening and the big, metal-louvered windows in the kitchen at the back, but the opening can be shuttered if needed with an industrial steel rolling door. Paola Lenti's colorful outdoor furniture and Gorman's punchy pillows soften the home's concrete construction. Opposite: Wild ponies graze on the hill beside the house, which faces the Caribbean.

PRODUCED BY LINDA O'KEEFE. PHOTOGRAPHS BY PETER MURDOCK. BY RAUL BARRENECHE.



### *What the Pros Know*

*With abundant sunshine, much higher electricity rates than on the U.S. mainland and difficulty reaching existing utilities, Vieques is a perfect place for a solar-powered house. To avoid the long and costly connection to the nearest electrical lines, John Hix suggested that his clients go off-grid and power the house entirely with electricity generated by the sun. The architect mounted three sets of photovoltaic panels, tilted to catch*

*maximum rays, on the roof. One powers a 50-gallon water heater, another the pool pump and filter system and the third generates enough power, stored in large batteries, to run lights, appliances and ceiling fans. To save additional energy, a small cascade that flows into the pool (part of the filtration system, typically a huge energy guzzler) runs only in full sunlight. "We live perfectly comfortably with full solar," says Gorman.*







*Gorman and Johansson gave Hix a very simple program: one large living space and two identical bedrooms. “The bedrooms are purposely small,” admits Gorman. “The house is about*

being together in the living areas.” To capture views of the Caribbean, Hix lifted the cast-concrete and concrete-covered masonry structure almost a full story above the bottom of the hillside site. (Doing so created plenty of room for storage, including space for a pair of massive cisterns that hold rainwater.)

Luckily, both the cooling trade winds (there is no mechanical air-conditioning) and the views were to the southeast, so Hix oriented large floor-to-ceiling openings in the rooms in that direction. “The property would potentially be surrounded by development, so the idea was to put ‘blinders’ on the east and west sides to emphasize the view toward the water,” explains the architect of the two nearly windowless concrete facades.

Gorman added texture and tone to some concrete-plastered walls, blending paints herself for hues ranging from blue gray to bright orange. Vivid throw pillows from her textile collection brighten up already color-saturated furniture from Italian design house Paola Lenti—all of it outdoor-grade. “If you come out of the pool and want to sit on the sofa, it’s not a problem. If you spill something, you can just hose it down,” enthuses Gorman.

That mix of style and practicality runs through the entire house. “It’s a very simple house, but everything works together to make it a magical place to live,” Gorman says. “At night, it’s absolutely amazing to see the stars almost in your face as you sit on the patio or lie in bed. When I’m here, I know I couldn’t be anywhere else.”

||||| In the master suite, a vintage 1980s Marimekko fabric by Fujiwo Ishimoto hangs on the wall of a closet separating the sleeping area from the bathroom. Furniture includes a custom bed and Peekaboo nesting tables from CB2. Gorman designed the pillow fabrics; the bedspread is a reissued 1950s Marimekko fabric by Finnish designer Maija Isola; Tolomeo sconces are from Artemide.

## Details

**(1)** Architect John Hix built all the doors, including the front door shown here, from inexpensive, pressure-treated southern pine. The entry, flanked by a concrete wall painted in a custom blue-gray shade, opens onto the palm-lined terrace and pool.

**(2)** Homeowner and textile designer Donna Gorman sketches at a desk of polished cast concrete tucked into a corner of the living area, just inside the front door. The Panton chair is from Vitra.

**(3)** Gorman stands on her daughters' bedroom terrace, overlooking the pool deck. The bedrooms' blank concrete walls are like blinders on the house, focusing views southeastward to the ocean and shielding the outdoor living space from future neighbors.

**(4)** In the no-nonsense kitchen, Hix used polished cast-concrete countertops, simple plywood-fronted cupboards and open, stainless steel shelving from Bradley, an industrial supplier.

**(5)** Gorman and Johansson's five-year-old daughter, Eve, cools off on a Paola Lenti lounge on the terrace outside the bedroom she shares with her sister, Lilly. It overlooks the hillsides of Vieques and the Caribbean. The owners wanted both bedrooms to be identical, so there is no "master" versus "guest" bedroom debate.

**(6)** Hix cast the bathrooms' polished-concrete counters with integral sinks and built-in open plywood shelving for towel storage below. Fixtures are a mix of high and low: mirrors framed in industrial stainless steel from Bradley and sleek Dornbracht faucets. To the right is an open-air shower. ▣

*See Resources, last pages.*





Six-year-old August Larson pitches in with the chores at the family's summer home. His dad opened up the kitchen to a large deck and forest views with a wall of glass windows and French doors. Powder-coated aluminum furniture is from Restoration Hardware's Carmel collection. Opposite: Augie with his parents, Torrie and Douglas Larson, on the old home's newly upgraded porch, which was deepened and enhanced with fluted Doric columns.



# American



# Idyll



Renovating a classic 19th-century home in *upstate New York*, Douglas Larson kept things simple, letting the sun shine in and giving 19th-century proportions a fresh Swedish twist.



In the summer of 2005, architect Douglas Larson and his wife, Torrie, the parents of a young son, decided it was time to invest in a second home, in upstate New York. But when Doug typed their modest target price into a multiple-listings website, it pulled up mostly trailers. So, when a mid-19th-century farmhouse on two acres in Stanfordville scrolled into view, he eagerly pounced. "I knew it had good bones the minute I saw it," he recalls (indeed, the couple got into a bidding war with another architect who possessed a kindred eye for potential).

"I wasn't doing backflips, but I wasn't freaking out either," says Torrie, a public-relations manager, of the fixer-upper. "Doug had never built anything for himself. He wanted a project."

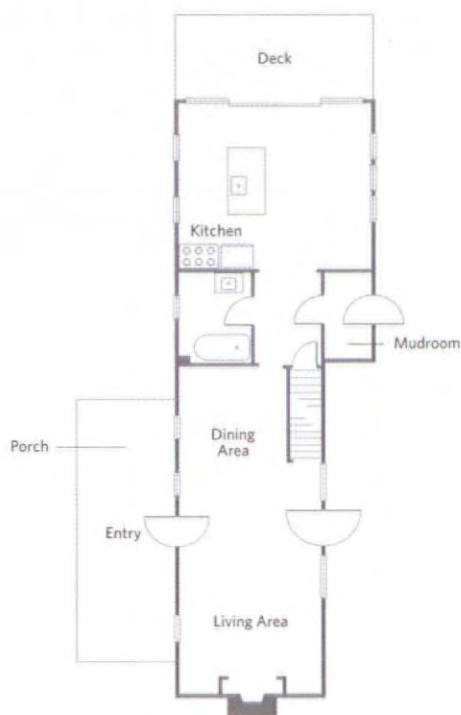
The 1,200-square-foot home didn't inspire awe. "It was like the Collyer brothers," admits Doug, because it was littered with cars, televisions and lawn mowers. "There was even a vat of pickles in

the basement." Its post-and-beam structure was sound, however, and exposing it would create an attractive design element.

He stripped the home to its frame, harvesting clapboard siding and windows for reuse, and deepened the porch to nine feet (anything bigger would skew proportions, he says). As in many farmhouses of the era, the interior was a warren of small rooms, so Doug removed the wall separating the living and dining rooms, converting them into a single, graciously scaled great room.

This page: Larson created a single open space from the former living and dining rooms and moved the fireplace to one end (between a pair of Ikea's *Lack* bookcases); he brightened things up further by painting the floors. Furniture includes a reproduction Jean-Michel Frank sofa, a midcentury table from Torrie's father and a steel tube chair (a gift from a client). Opposite: In the dining room, CB2's *Parachute* table is surrounded by a collection of antique Hitchcock chairs.

PRODUCED BY LINDA O'KEEFE. PHOTOGRAPHS BY TIM STREET-PORTER.  
WRITTEN BY JORGE S. ARANGO.



### What the Pros Know

*"You don't go messing around with a post-and-beam structure lightly," says Doug Larson. "First you have to expose everything to understand it." Windows and doors must fit within the three- to four-foot spans between posts. They should be double paned and thermally broken (meaning that invite light in but to avoid losing heat or coolness. Then you must insulate thermally and for sound. If you*

*desire the exposed-beam look, insulation—typically six inches of it—has to fit within the thickness of the beams and rafters (which generally measure seven to nine inches square in houses this old). Plastered-over foam board insulation works well for sound. Larson's roof deploys blue board insulation on the inside, and an oriented strand board (or wafer board) between the outer sheathing and the faux standing-seam roof.*



A

rguably the boldest move was the reconfigured kitchen. Left as it was, its cooking area would have been visible from the newly airy living/dining room. “I felt it was important for service spaces to be tucked away out of sight lines,” Doug says, something he often does in high-end residential projects. And his retail-design experience taught him the importance of luring visitors into a store by drawing the eye to the rear. So he relocated appliances to a different corner and created a dramatic glass wall consisting of French doors topped by windows that go right up to the gable.

Doug’s Swedish background informed the decor: relatively minimal furnishings set amid white-painted floors and walls. “A spartan aesthetic appeals to me, especially in the country,” he says. “It’s also cost-effective. You can decorate simply, so that important pieces really sing.” Splurges include a custom sofa in the kitchen and a headboard in the master bedroom, both covered in Josef Frank fabric, and, at the kitchen table, a Jacobsen *Egg* chair that swivels around to face the sylvan view. Indeed, the house, if not quite quintessentially Gustavian, has a bright Scandinavian feel to it, though with a modern American inflection.

The renovation was so successful that Doug has since received three commissions from neighbors. Torrie recalls one man who complimented its appropriate scale for the landscape. “We didn’t build a big house and surround it with little trees,” she says. “It’s very simple and fits perfectly into its environment.” □

See Resources, last pages.

||| This page (from top): In the kitchen, an adjustable Achille Castiglioni *Leonardo* table from the Conran Shop meets a yoke-yellow Arne Jacobson *Egg* chair and Ikea’s *Ädel* cabinets; the room also features *Hendriksdal* bar stools and a *Värde* island (with a custom Corian counter) from Ikea. Opposite: The Larsons dressed up their *Min* bed from Design Within Reach with a Josef Frank fabric for Svenskt Tenn through Brunschwig et Fils; the *Robin* bedside chests are also from Ikea.



A photograph of a modern guesthouse with large windows and a wooden wall. Two men are sitting on a bench in front of the building. The foreground is filled with white daisies and yellow flowers. The background shows a lush green landscape with trees and a body of water.

## Be Our Guest

On a Texas family's vacation spread near *Jackson Hole, Wyoming*, a compact and eco-friendly guesthouse offers lessons in living stylishly small all-year-round.



This page: In the living room a pair of custom, leather-topped tables from Emily Summers Design Associates serve an A. Rudin sofa. The vintage Søren Willadsen armchair is covered with Pierre Frey's *Saint Andrews* fabric. The *Random* pendant lamps, from Moooi, are by Bertjan Pot. Opposite: Architect Eric Logan (left) and project manager Jeff Lawrence sit on a *Parkalto* bench by Bruno Rainaldi from Design Within Reach. The west exterior wall features copper banding and a view of the maple and metal cantilevered staircase.



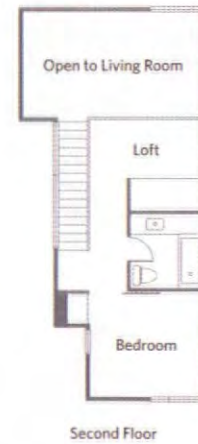
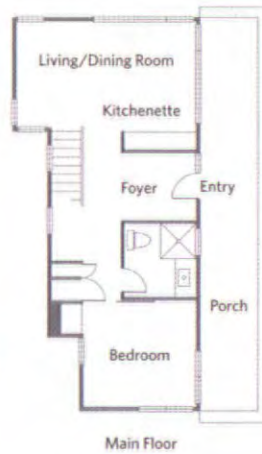
Architect Eric Logan has grown accustomed to people who compare the pattern of windows on the east wall of the guesthouse he designed for a Dallas couple to a Mondrian painting. But the Dutch artist's influence doesn't stop there. On entering the eco-savvy residence—located on three acres just west of Jackson Hole, Wyoming—your eye goes to the staircase, where the juxtaposition of translucent vertical wall panels—actually two layers of resin sandwiching white fabric—and bright-orange resin squares and rectangles also makes a strong geometric statement.

According to Logan, who, along with project manager Jeff Lawrence, “got all painterly” with the sustainable wall material, the translucent boards also function as a stair railing for the steel stringer that links the lower and upper floors while supporting the maple treads in between. “The panels filter daylight and the stair wall glows like a lantern,” he adds.

Designed to handle the overflow from the main house, where the homeowners and their three young boys come to ski and climb mountains, the guesthouse was intended as a fully functional adjunct, with its own personality but still melding with the surroundings. Stained concrete floors and maple cabinetry further define the interiors, while outside, the simple gabled roof and shingle cladding mimic the main house. “I thought of it like a geode,” says Logan, who distinguished the exterior with copper banding and a structured porch supported by four steel posts.

||||| This page: The view from the loft shows off the wool felt rug by Claudy Jongstra and a red console table by the home's interior designer, Emily Summers. Drapes are made of linen sheers combined with a khaki linen band that reads almost like a valance. Opposite (from top): The house nestles in a stand of cottonwoods and aspens; in the entry, a bench provides a place to remove shoes and a vintage storage piece glazed with car paint is used for stowing hats and gloves.

PRODUCED BY SUSAN TYREE VICTORIA AND MINDY PANTIEL. PHOTOGRAPHS BY GREY CRAWFORD. WRITTEN BY MINDY PANTIEL.



### What the **Pros** Know

*Ecoresin panels are an environmentally friendly way to create everything from walls and room dividers to bathroom vanities and shower doors. Composed of at least 40 percent recycled content—they are fashioned from waste products taken from the fronts of old vending machines—the nontoxic material meets LEED standards, is lighter than glass and responds beautifully to backlighting. Made up of individual layers, the panels come in an array of colors and can be embed-*

*ded with natural materials like flower petals and bamboo stalks, fabrics or one-of-a-kind digital designs. Introduced in 1991 by 3form (3-Form.com), prices range from \$9 to \$75 a square foot, based on the thickness and the kind of interlayers. Architect Eric Logan used them in this guesthouse and on several other projects to encourage light flow between spaces. "We see them as an eco-friendly opportunity to create privacy with various levels of translucency," he says.*



**S**mall in footprint but big in volume—"It's the biggest 1,100-square-foot house you'll ever experience," says Logan—the simple program consists of a living room, kitchenette, bedroom and one bath below and a second bedroom, bath and loft above. Soaring, 24-foot ceilings and an abundance of natural light add to the illusion of spaciousness. In the living room a pair of oversize windows and glass doors meet in one corner and open to views of the adjacent courtyard. Upstairs, carefully composed window openings guarantee privacy while framing glimpses of treetops and crystal blue sky.


Because the homeowner is an art collector, Dallas-based interior designer Emily Summers opted to keep the limited wall space white for artwork. "Plus, you want white in a tiny space," she says. A Claudy Jongstra sheepskin rug dyed marigold yellow emerged as the living room's centerpiece. "It worked perfectly with the Mondrian palette," says Summers, who offset the bold floor covering with a neutral sofa. Heavily textured petrified-wood tables are balanced with billowy drapes, and come evening, hanging light fixtures with the delicacy of blown bubbles provide a soft glow.

Space-saving maneuvers abound throughout: a built-in bench suspended in the entry provides a place to remove shoes and room to stow them underneath, and a space-conscious Donald Judd-inspired platform bed in the master suite has surfaces for books and alarm clocks built right in. "The key to decorating in a small space is not to overpopulate it," says Summers. ▣

*See Resources, last pages.*

This page (clockwise from top left): A gable roof and cedar shingles define the exterior architecture; well-orchestrated white and slate-gray wall tiles in the bathroom are by Ann Sacks; the bedroom features a vintage *String* chair and a birch-plywood platform bed that is modeled after a design by artist Donald Judd. Opposite: The kitchenette cabinets are thick apple ply with maple veneer, topped with black granite. The T-bar hardware is from Green Street Details.



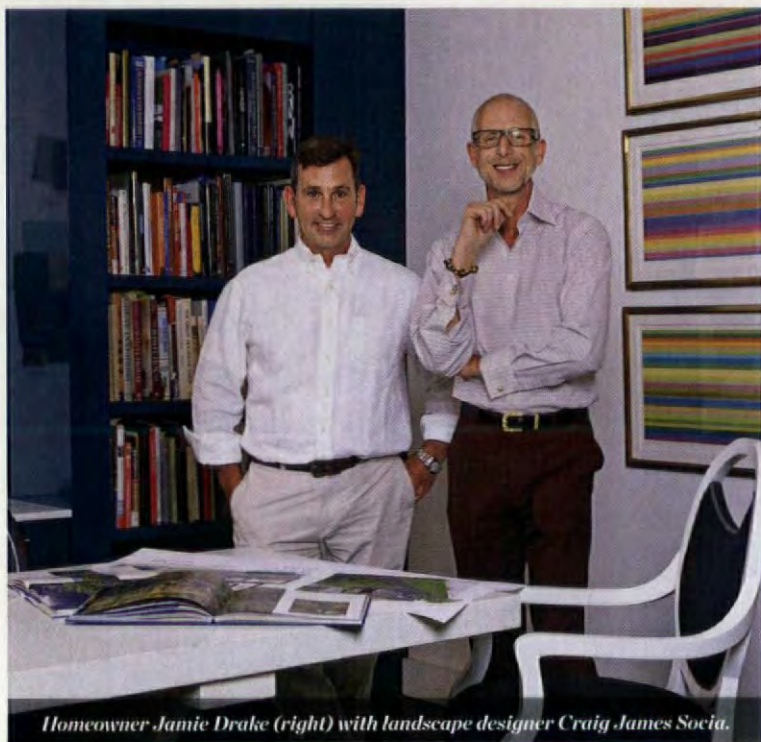


This page: An 18th-century water goddess adds gravitas to a pool beside a pine and oak forest. Dry-laid walls of Pennsylvania stacking stone harmonize with bluestone steps, while European hornbeam hedges partly screen the lower terrace from the house above. Opposite: The patterned front garden, which overlooks the entry drive, features sheared boxwood balls in green and variegated forms. Against their crisp evergreen shapes, 'Victoria Blue' salvia and white-flowering *Ceratopogon trichoides* (South African foxglove) bloom all summer.

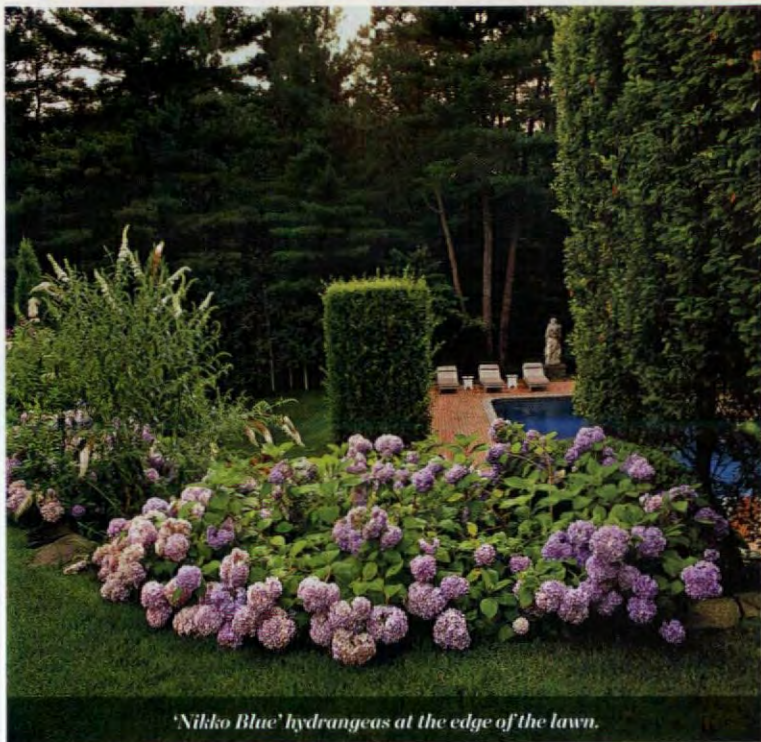
# *Designer Greens*

*With the help of stacked stone, cascading ivy and clipped boxwood, designer **Jamie Drake's** East Hampton hideaway, which began as a builder's spec house, sheds its come-lately look.*





Homeowner Jamie Drake (right) with landscape designer Craig James Socia.



'Nikko Blue' hydrangeas at the edge of the lawn.

*Seeing the venerable* hedges and lavish mixed borders in Jamie Drake's East Hampton, New York, garden, it's hard to fathom that a decade ago, his house sat nakedly new atop a hill, ringed by surrounding woods. Gone are the hundred pines and scrub oaks that once marched up the slope to crowd the shingled cottage. In their place, stone walls and sheared boxwood create character, the illusion of age and a foreground for its woodsy prospect. "You enjoy a forest view more if the forest's not right in front of you," says Craig James Socia, the landscape designer who conceived the plan for Drake's five rolling acres.

Tucked cozily amid shrubs and beds, the house is a far cry from the spec property that Drake (the acclaimed Manhattan designer who redid Gracie Mansion for Mayor Bloomberg) bought unfinished, to be a weekend retreat. Before attacking the inside, he

asked Socia, the creator of his previous garden, to give the home a proper setting and to shape the outdoors for summer living. "Originally," Socia recalls, "it felt as if you could step out the back of the house and roll downhill, an uncomfortable feeling."

Known for mixing formal elements with exuberant naturalism to make gardens people actually use, Socia began by clearing trees and grading the rear slope to expand the flat space on top. For warm-weather lounging, he built a spacious terrace and edged it with lawn and wraparound plantings enclosed by stacked-stone walls. The walls retain the upper slope, while underneath them, more lawn rolls down to meet the surrounding woods.

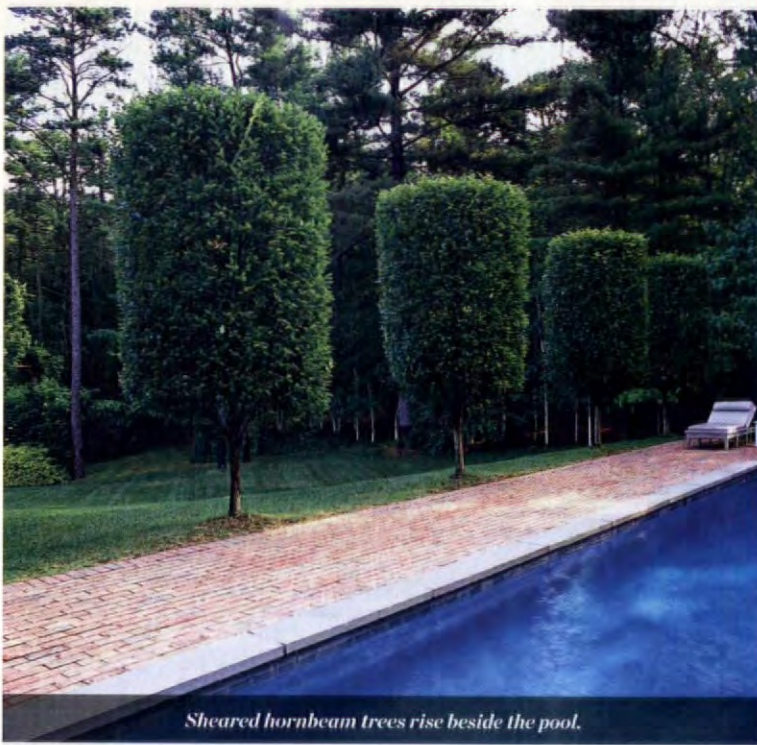
In front, beside a steep entry drive, Socia skipped lawn altogether and warmed the welcome with a patterned parterre in keeping with the traditional house. Evergreen boxwood balls and



In the back of the house, lush lawn rolls down to meet the woods.



Boxwood balls, Irish junipers and mixed perennials fill the stone-edged beds.



*Sheared hornbeam trees rise beside the pool.*



*Pine and oak trees create a wild backdrop for the garden's refined shapes.*

hedges structure this garden year-round, while splashy flowers (salvias and South African foxglove) come and go during summer.

This push-pull between order and happy chaos runs throughout the landscape and ties together its far-flung parts. Deer-repellent boxwood, both variegated and green, appears everywhere, like the chorus of a song. "Repetition," Socia observes, "establishes rhythm and connection that the eye picks up over distance."

At the same time, focal points add drama: One is an existing swimming pool that Socia flanked with hornbeam trees carved playfully into lollipops. Another is a vine-draped cedar folly inspired by a trip Drake took to Russia. Socia's fanciful version of a Saint Petersburg summer palace, minus the red paint and gilt trim, is filled with cedar furniture he designed and built himself.

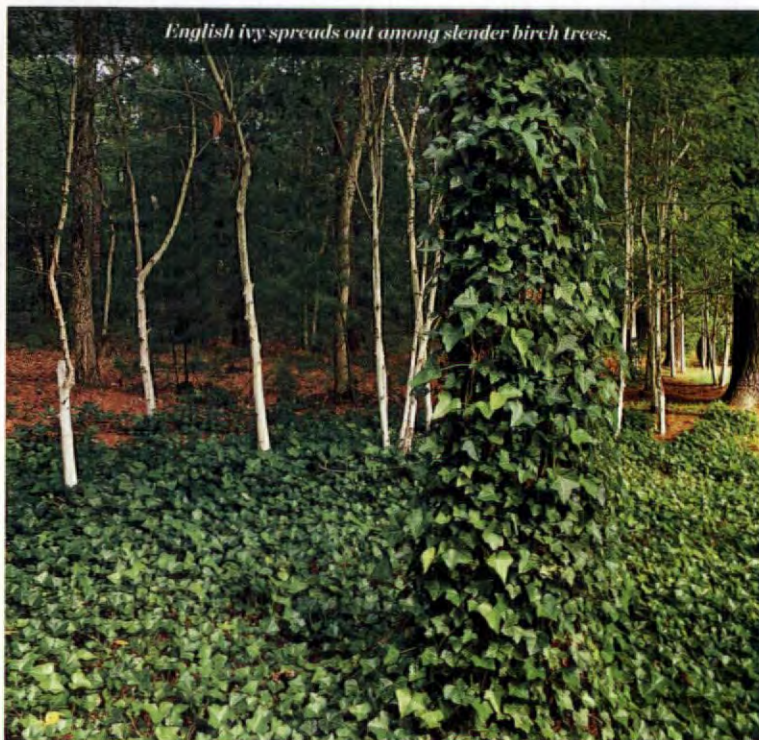
Elsewhere, his mix of annuals and perennials prolongs the

garden season. In the borders behind the house, spring begins with massed bulbs (crocuses, daffodils, hyacinths, tulips), while wisteria hangs heavily on the folly. 'Nikko Blue' hydrangeas and assorted roses bloom in summer, along with candy-sweet heliotrope and New Guinea impatiens, and then fall brings peegee hydrangeas, flowering sedums and red-flushed crab apple trees.

Drake loves the feeling of being "hidden away in the woods," but he's big on garden parties too. They often start with cocktails and dinner on the terrace. Later, guests might wander, perhaps winding up at the bottom of the hill, in the small-scale, open-air palace that feels as rich and timeless as summer itself. □

*See Resources, last pages.*

PHOTOGRAPHS BY RICHARD FELBER. WRITTEN BY SUSAN HEEGER.



*English ivy spreads out among slender birch trees.*



*Wisteria, laurel and ferns soften the rustic cedar of the folly.*

# POINTclickHOME

New Look. New Feel. New Features. The New PointClickHome.com



PHOTO: JACK THOMPSON FOR METROPOLITAN HOME, APRIL 2009

Featuring I On Design, Met Home's newest design blog.  
[pointclickhome.com/iondesign](http://pointclickhome.com/iondesign)

## Metropolitan Home **STYLEGUIDE**

Special Advertising Section

Whether you're renovating—or just rejuvenating—StyleGuide catalogs from these quality advertisers are an easy way to get great ideas for your home. Order a few, or order them all and keep for future reference.

Simply fill out the attached card and mail. For faster service, fax to (888) 847-6035, or go to [www.methome.com/styleguide](http://www.methome.com/styleguide).

### ARTS & ANTIQUES

- DNA 11.** DNA Portraits by DNA 11. The World's Most Personalized Art. Your actual DNA, fingerprints, or lips transformed into modern art. 25 designer color options and multiple sizes. 866-619-9574 [www.dna11.com](http://www.dna11.com). \$25.00 (for color swatch kit - with \$25 credit towards future purchase). \$25.00.
- Lisa Orr Art.** Lisa Orr is an artist offering limited edition giclée prints and original art in various sizes. Browse her collection of abstracts, mixed media and landscapes at [www.LisaOrrArt.com](http://www.LisaOrrArt.com) to use as a focus piece or a splash of color to add dynamic and a unique touch to personal spaces and interiors. For more information visit [www.LisaOrrArt.com](http://www.LisaOrrArt.com) or call 801-865-6942. **FREE.**

### BUILDING & REMODELING

- Send me all **FREE** information from the Building & Remodeling category.
- Icynene®.** Upgrade your home's energy performance by up to 50% - Insulate with Icynene® expanding, open-cell spray foam and air barrier. 100% water-blown, Icynene® maintains a healthy indoor environment as it employs no PBOEs/formaldehyde. Learn more, visit [InsulationSmart.com](http://InsulationSmart.com). **FREE.**
- MWE.** MWE is the leading manufacturer of stainless steel sliding door systems, and stands for elaborate design, perfect function and the highest manufacturing quality. The hands of the most specialized and highly skilled German craftsmen transform every piece of MWE hardware into an architectural highlight for any setting, contemporary or traditional. \$15.00.

- Napoleon Fireplaces.** Napoleon manufactures quality fireplaces, stoves, inserts, gas logs and outdoor living products; all offering a multitude of designer choices to suit any décor and any lifestyle. 800-461-5581. **FREE.**
- Runtal.** Towel warmer radiators for the bathroom and decorative radiant heaters for the entire home. 800-526-2621. **FREE.**
- The Iron Shop.** The leading manufacturer of spiral stair kits since 1931. Spirals available in Metal, Oak, and Victorian Cast Aluminum and all welded Custom Units. On-line ordering and installation videos available. 800-523-7427, ext. MH. **FREE.**
- Wittus.** Wittus - Fire by Design offers fine quality contemporary European designed wood, gas, and other hearth products (fireplaces, stoves, and accessories). T 914-764-5679 [www.wittus.com](http://www.wittus.com). **FREE.**

### DECORATIVE HOME

- Send me all **FREE** information from the Decorative Home category.
- Craig Van Den Brulle.** Craig Van Den Brulle - renowned furniture designer, with a 3,000 Sq.Ft. gallery featuring a vast collection of Twentieth Century classic modern antiques and custom design services. For more information, please call 212-925-6760 or visit [craigvandenbrulle.com](http://craigvandenbrulle.com). **FREE.**
- Photowow.** Brighten your walls with your memories. Choose from 40 designs - Warhol-style to montages, printed large on canvas and ready to hang. 800-453-9333. **FREE.**
- Riedel Crystal.** As the wine glass company, Riedel crafts the finest glasses, enhancing your wine and your table. Riedel's designs are as casual and contemporary as the stemless "O" glass or as elegant and timeless as the hand-blown Sommeliers series. [www.riedel.com](http://www.riedel.com). **FREE.**

12. **Wind Deco.** Beautiful and uniquely designed fans created to enhance the style of any room in your fabulous home. Shop now to start transforming your room today. [www.winddeco.com/methome](http://www.winddeco.com/methome). 866-670-5560. **FREE.**

## **ELECTRONICS**

13. **LG Electronics.** The LG70 Series with Intelligent Sensor technology adjusts to your viewing environment. And with Full HD 1080p and 120Hz technology, television doesn't get any better than this. Toll Free: 800-243-0000 URL: [www.LGusa.com/LG70](http://www.LGusa.com/LG70). **FREE.**

## **FLOORS & WALLS**

1200. Send me all **FREE** information from the Floors & Walls category.

14. **Abbey Carpet & Floor.** For the latest styles and designs in floor fashions, please visit one of our locally owned and operated Abbey Carpet & Floor showrooms or go to [BuyAbbey.com](http://BuyAbbey.com) to find the showroom nearest you. **FREE.**

15. **Carpet Express.** Carpet Express Inc. offers nationwide delivery on America's most trusted brands of residential and commercial floor covering. Shop and save by calling 800-922-5582 or shop online at [www.CarpetExpress.com](http://www.CarpetExpress.com). Great prices are only the beginning! **FREE.**

16. **Mirage Flooring.** Experience the elegance and warmth only Mirage Prefinished Hardwood Floors can deliver. Discerning homeowners can choose from timeless to new exotic species and be assured that they have the finest in prefinished wood flooring. 800-463-1303 [www.miragefloors.com](http://www.miragefloors.com). **FREE.**

17. **Pure Rugs.** Pure Rugs. Simple modern designs to suit any space. The source for Sheepskin, Shearling, and Cowhide rugs. Unlimited design possibilities, standard or custom sizes. Natural, sustainable, durable. For more information, please visit [www.purerugs.com](http://www.purerugs.com). **FREE.**

## **FURNITURE**

1300. Send me all **FREE** information from the Furniture category.

18. **AKO Interior.** Full range of contemporary furnishings for home, office and commercial design, by world's leading manufacturers. Professional Design Lab available for special projects. Visit [www.akostores.com](http://www.akostores.com) or call 866-AKO-HOME. **FREE.**

19. **American Leather.** American Leather is a world-class manufacturer, making the highest quality upholstered furniture since 1990. For more information, visit [americanleather.com](http://americanleather.com) to see our made-to-order collection, ready without the wait or contact us at 800-456-9599. **FREE.**

20. **BDI.** Contemporary furniture manufacturers of home theater furniture, tables and mirrors. View BDI's catalog and find a dealer online at [www.bdiusa.com](http://www.bdiusa.com). **FREE.**

21. **Bell'O International.** Bell'O International is the trend leader in Italian-designed home-theater furniture, offering the broadest selection of audio/video furniture & seating, TV wall mounts and related accessories. For more information, visit [bello.com](http://bello.com). **FREE.**

22. **Bourgeois Boheme.** We are a French Contemporary retail showroom. Highlighting in home furnishing from France. Specializing in our own Bourgeois Boheme Atelier Contemporary Collection which produces home furnishing and lighting in the USA. [www.bobointeriors.com](http://www.bobointeriors.com) tel. 323-936-7507. \$35.00.

23. **Charles P. Rogers Beds.** Since 1855 wood, leather, brass, iron beds, platform beds, daybeds, trundle beds, canopy beds, European linen & cotton bedding. Factory direct. Web/phone orders welcome. Catalog \$2 (free online). For more information call 866-836-6504. \$2.00.

24. **Cliff Young Ltd.** [www.cliffyoungltd.com](http://www.cliffyoungltd.com) Phone: 212-683-8808. Furniture For Modern Lifestyles. **FREE.**

25. **FLOU Canada.** The FLOU bed system proposes upholstered beds, wood beds, an exclusive collection of bed linens, mattresses, duvets, comforters and pillows. Every single element of the FLOU product line has been designed to be perfectly compatible with the others, providing versatility, optimal comfort, and timeless appeal. 888-FLOU-BED. \$250.

29. **Sunbrella.** Create luxurious décor for your home, both inside and out, with beautiful Sunbrella® performance fabrics. For more information, visit [www.sunbrella.com](http://www.sunbrella.com) or contact a design professional. **FREE.**

30. **The Shade Store.** Custom shades, blinds, drapery available through NYC/San Francisco showrooms and online. Products ship in 10 days or less. Free samples, measure/install services available. For more information, visit [theshadestore.com](http://theshadestore.com) or call 800-754-1455. **FREE.**

31. **Usona.** Usona's online catalogue, [www.usonahome.com](http://www.usonahome.com), is updated on a daily basis with new pieces from over 70 lines of modern upholstery, casegoods, and lighting. **FREE.**

32. **Vioski.** The VIOSKI furniture collection conveys an elegant modernism that reflects designer Jeff Vioski's background in architecture. Each piece offers, clean, well-balanced proportions and the comfort needed for today's relaxed lifestyles. The collection joins modern lines with the finest materials, rich textures and an innovative flexibility of use. [www.vioski.com](http://www.vioski.com). **FREE.**



**Outdoor Living**  
just became a  
whole lot easier!

**ENTER TO WIN**  
the DCS 30" Professional Grill  
by Fisher & Paykel.

[methome.com/styleguide](http://methome.com/styleguide)

NO PURCHASE NECESSARY TO ENTER.  
See official rules online for complete details, entry information and restrictions.

26. **Hans J. Wegner.** Carl Hansen & Son is a leading manufacturer of Danish modern classic furniture. The association between Hans J. Wegner and Carl Hansen & Son Mobelfabrik A/S dates back to 1949. The iconic "Wishbone" chair and Wegner Collection is sought after by collectors worldwide with its inspired and timeless aesthetics. For more information, visit our website at [www.carlhansen.com](http://www.carlhansen.com) or at [info@carlhansen.com](mailto:info@carlhansen.com). **FREE.**

27. **Resource Furniture.** Resource Furniture presents the most innovative wall beds and space saving furniture of the highest quality Italian origin from CLEI srl. For more information, visit [resourcefurniture.com](http://resourcefurniture.com), or call 212-753-2039. **FREE.**

28. **Room & Board.** Home. Sometimes a place to gather with people you love, sometimes a retreat from our busy world, home is a place that always feels welcoming. At Room & Board, we believe that your home should be your favorite place. We create unique, handcrafted furniture with American artisans who share our passion for comfortable, modern designs you will live with, and love, for years to come. Visit us at [roomandboard.com](http://roomandboard.com) or call 800-952-8455. **FREE.**

33. **Wicker Warehouse.** Beautiful wicker & rattan furniture for indoors and outdoors. Bedrooms, bathrooms, children's furniture and accessories galore! Guaranteed lowest prices on national brands. [www.wickerwarehouse.com](http://www.wickerwarehouse.com) Dept. ED 53. **FREE.**

## **KITCHEN & BATH**

1400. Send me all **FREE** information from the Kitchen & Bath category.

34. **CaesarStone.** With over 40 colors and textures, CaesarStone provides a premium quartz surface. CaesarStone is nonporous, stain, scratch and heat resistant and backed by a lifetime warranty. **FREE.**

35. **Downsview Kitchens®.** A leading custom cabinetry manufacturer for the last four decades, DOWNSVIEW KITCHENS offers unlimited finish selections and the largest range of innovative design in the industry. 905-677-9354 [www.downsviewkitchens.com](http://www.downsviewkitchens.com). \$20.00.

36. **KraftMaid.** With more than 125 different door styles, nearly 60 different finishes, and hundreds of storage solutions and decorative enhancements, KraftMaid turns inspiration into a kitchen that's uniquely you. Let us help you bring your inspiration to life. **FREE.**

37. **Lacava.** Lacava is a leading designer and manufacturer of bath furnishings and fixtures in contemporary, transitional, and traditional styles, for the most discerning tastes. \$29.00.

38. **Lowe's.** To receive a **FREE** no-obligation subscription to Lowe's Creative Ideas magazine, sign up online at [LovesCreativeIdeas.com](http://LovesCreativeIdeas.com). Your invitation code is 1253. **FREE.**

39. **MirrorMate Frame®.** The 20-Minute Mirror Makeover™. Frame those plain, bare mirrors - while they're up! Easy DIY project and inexpensive tool! [www.mirrormate.com](http://www.mirrormate.com) 866-304-6283. **FREE.**

40. **Ronbow.** Ronbow offers a dynamic design spectrum to fit any style home, from contemporary to old world traditional. Versatile designs allow for interchangeable sinks and countertops in wood, glass, stone & ceramic. [www.ronbow.com](http://www.ronbow.com) 888-880-8318. **FREE.**

41. **Sub-Zero.** Keep your food fresher, longer with Sub-Zero's innovative food preservation technology. Discover all that's fresh at [subzero.com](http://subzero.com). **FREE.**

**Wetstyle.** Wetstyle is the domain of the designer bathroom where minimalist principals are devoted to the well being of body and soul. View our collection at [www.wetstyle.ca/mh](http://www.wetstyle.ca/mh).

42. **Wolf Appliances.** Create delicious meals with ease. With Wolf you can. For more on Wolf's high-performance ovens, ranges, cooktops, and grills, visit [wolfappliance.com](http://wolfappliance.com). **FREE.**

## **LIGHTING**

1500. Send me all **FREE** information from the Lighting category.

43. **Circa Lighting.** Whether you are renovating, building or just searching for that one perfect piece, Circa Lighting has the solution for you. **FREE.**

44. **Seascape Lamps.** Contemporary and modern drum and cylinder decorative fabric lighting fixtures, table and floor lamps, and wall sconces custom made to order in the U.S. **FREE.**

45. **The Modern Fan Co.** The Modern Fan Co. produces an exclusively contemporary collection of ceiling fans. [www.modernfan.com](http://www.modernfan.com) 888-588-3267. **FREE.**

## **MISCELLANEOUS**

**Suzanne Felsen.** Los Angeles based Jewelry designer Suzanne Felsen creates modern classic jewelry for women in 18k yellow, white and rose gold, platinum, and sterling silver with unusual gemstones. The men's collection includes silver and gold cuff links with gemstones and men's rings. Visit us at [www.suzannefelsen.com](http://www.suzannefelsen.com).

## **PAINT & WALLPAPER**

**BEHR Paint.** BEHR Paint is sold exclusively at The Home Depot. Visit us online at [www.behr.com](http://www.behr.com) or call 800-854-0133, Ext. 2 for additional information about our products and online color tools.



## DNA Portraits by DNA 11

The World's Most Personalized Art

Your actual DNA, fingerprints or lips transformed into modern art. 25 designer color options and multiple sizes. Receive free shipping by going to the web site below.

T: 866.619.9574  
www.dna11.com/methome



## ARTBYLT.com

Modern, contemporary art for your home or office: Original paintings, colorful drawings, and limited edition prints on canvas or paper, ready to hang. Created by renowned NY abstract artist, Lynne Taetzsch. Online gallery and catalog.

T: 877.278.2581  
www.artbylt.com

## Rhonda Hill Gallery

Experience the Fine Art of Rhonda Hill.

Zen Contemporary style in a balance of texture, mixed media, layers of warm & cool color creating a soothing tranquil feeling. Giclees available.

T: 877.748.0187  
www.rhondahillgallery.com



## Wicker Warehouse

Beautiful Wicker and Rattan furniture! Select from an array of Designer Colors on All Weather Wicker, Wicker Bedroom Furniture, Bathroom Collections and accessories galore! National brands include Lane, South Sea and Designer. Order our FREE Brand New 84 page Color Catalog or shop online at WickerWarehouse.com - Showroom in Hackensack, N.J. Department code MH 48.

T: 800.274.8602  
www.WickerWarehouse.com



## G SQUARED ART

Cirque ceiling fan - a work of art that cuts 10 to 40% from your energy use. Quiet, powerful, reliable. Lifetime Warranty.

We donate 1% of sales to save our planet.

Call us M-F 7AM-5PM Pacific time or visit us online.

T: 877.858.5333  
www.g2art.com



## WETSTYLE

The purest form of luxury

WETSTYLE is the domain of the designer bathroom where minimalist principals are devoted to the well being of body and soul and rejuvenation is found in simple and pure forms.

T: 866.842.1367  
www.wetstyle.ca/methome

## MirrorMate Frames®

The 20-Minute Mirror Makeover™

Frame that plain mirror in your bathroom. Custom-cut MirrorMate® frames adhere onto your mirror surface. Enter coupon code "MH10" to receive 10% off your order.

See us online.

www.mirrormate.com



## allPopart

Custom canvas portraits, hand-illustrated from your photos. Easy ordering and pricing online. View your proof online within one week for your approval or modifications and receive it within 7 days. Visit our before and after Samples Gallery at our website.

Free shipping for a limited time.

T: 877.728.9278  
www.allpopart.com



www.allpopart.com - 1.877.728.9278



### Modern Digital Canvas

Our large modern canvases transform any interior into a cool, refined space. They arrive fully stretched and ready to hang. Sized 3' - 5' and priced \$195 - \$379, free shipping!

T: 888.345.0870  
www.md-canvas.com



### The Iron Shop

The leading manufacturer of spiral stair kits since 1931. Spirals available in Metal, Oak and Victorian Cast Aluminum and all welded Custom Units. On-line ordering and installation videos available.

T: 800.523.7427 ext. MH  
www.theironshop.com/mh

### Aleta Pippin

Vibrant contemporary abstract paintings by Santa Fe artist - Aleta Pippin.

Online gallery of original artwork for your home and office. Commissions welcomed.

T: 505.699.3535  
www.aletapippin.com



### World's Finest Hardware

- In stock for immediate delivery
- Guaranteed lowest price
- 100's of glass door styles

T: 866.815.8151  
www.specialtydoors.com



### Rabbit Air MinusA2™ Air Purifier

Transform the air in your home without sacrificing style. Innovative, ultra quiet, wall-mountable HEPA air purifier eliminates dust, mold, pet dander, smoke and other contaminants from your living space.

T: 888.866.8862  
www.rabbitair.com



### Wind Deco

Innovative ceiling fans that complement your fabulous décor. A fan like this is the perfect final touch. Shop now to complete your room's look today!

T: 888.670.5560  
www.winddeco.com/MetHome

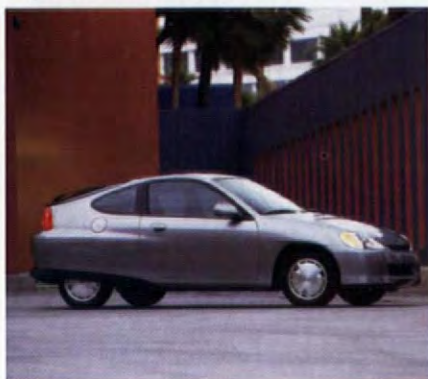
# July/August 09

## A Word About Resources

If you have a question about something you saw in our magazine, please send an e-mail to [rlexier@hfmus.com](mailto:rlexier@hfmus.com).

## Corrections

The B&B Italia *Crinoline* chair on page 46 of our May 2009 issue is \$4,870 as shown.



On page 30 of our June issue the image accompanying our award for the Honda Insight was incorrect. The 2009 Insight is pictured above.

On page 135 of our June issue we failed to credit Roscoe Betsill for food styling our story "The Great American Sandwich."

## Cover

Please see resources for "The Art of Compromise."



## Shelf-Contained

**Design:** Jill VanTosh, VanTosh & Associates, 1477 Spring St., Atlanta, GA 30309, 404/237-8686.

## The Art of Compromise

**Architecture:** Joseph Tanney and Robert Luntz, Resolution: 4 Architecture, 150 West 28th Street, Suite 1902, New York, NY 10001, 212/675-9266, [re4a.com](http://re4a.com); **Design:** Amy Lau, Amy Lau Design, 601 West 26th Street, Suite M272, New York, NY 10001, 212/645-6168, [amylaudeign.com](http://amylaudeign.com); **Metal doors:** Kawneer, [kawneer.com](http://kawneer.com); **Sliding doors:** Arcadia Architectural Products Inc., [arcadiaproducts.com](http://arcadiaproducts.com); **Windows on sliding doors:** Gamco Corporation, [gamco.com](http://gamco.com); **Fiberglass paneling:** Kalwall, [kalwall.com](http://kalwall.com); **Page 52 Mirror:** *Lilypon* by Amy Lau, [amylaudeign.com](http://amylaudeign.com); **Hanging cabinet:** Knoll,



[knoll.com](http://knoll.com); **Pages 54-55 Sofa:** Edward Wormley for Dunbar, [collectdunbar.com](http://collectdunbar.com); **Coffee table, swivel chairs:** Vintage from Century Design Ltd., [centurydesignltd.com](http://centurydesignltd.com); **Lounge chair, ottoman, floor lamp:** Vintage from Modern Times, [1stdibs.com](http://1stdibs.com); **Cigarette table, rug, fire screen:** Amy Lau, [amylaudeign.com](http://amylaudeign.com); **Page 56 Stools:** Erik Buck, through Lawson-Fenning, [lawsonfenning.com](http://lawsonfenning.com); **Faucet:** Grohe, [grohe.com](http://grohe.com); **Dishwasher:** Fisher & Paykel Appliances, [fisherpaykel.com](http://fisherpaykel.com); **Page 57 Table:** Jens Risom, [risom.org](http://risom.org); **Chairs:** Owner's collection; **Chandelier:** George Gilpin, [georgegilpin.com](http://georgegilpin.com); **Page 58**

**Dresser, nightstand:** Coo Coo U; [coocoomodern.com](http://coocoomodern.com); **Throw:** Judy Ross, [judyrosstextiles.com](http://judyrosstextiles.com); **Table lamp:** Muriel Coleman, through Noho Modern, [nohomodern.com](http://nohomodern.com); **Wall lamp:** David Weeks, [davidweeks.com](http://davidweeks.com); **Page 59 Door:** Custom by Kawneer; **Showerhead body:** Chicago Faucets, [chicagofaucets.com](http://chicagofaucets.com); **Showerhead:** Speakman, [speakmancompany.com](http://speakmancompany.com).

## Life on Cloud 9

**Architecture:** Lake/Flato Architects, 311 Third Street, San Antonio, TX 78205, [lakeflato.com](http://lakeflato.com);



**Design:** Elizabeth Ridenhower, 210/735-2802; **Contractor:** Jimbo Grisebaum, Benchmark Design Build, 407 Spring Mill Drive, Kerrville, TX 28028, 830/377-1253; **Pages 64-65 Slipcovers, pillows:** Custom by Elizabeth Ridenhower; **Ceiling fan:** Stevens Lighting, [stevenslighting.com](http://stevenslighting.com); **Benches:** Wisteria, [wisteria.com](http://wisteria.com); **Rug:** Pottery Barn, [potterybarn.com](http://potterybarn.com); **Painting: *Flowing 8*** by Udo Noger from Chiaroscuro Gallery, 505/992-0711; **Artwork at right:** Caprice Taniguchi, [capricepierucci.com](http://capricepierucci.com); **Page 65 (photo, upper right) Bench:** Wisteria, [wisteria.com](http://wisteria.com); **Rug:** Basil N. Scaljon Oriental Rugs, 210/734-3711; **Pages 66-67 Refrigerator, dishwasher:** LG, [lge.com](http://lge.com); **Cooktop, oven, exhaust:** GE, [ge.com](http://ge.com); **Hardware:** Architects and Heroes, [shopheroes.com](http://shopheroes.com); **Stools:** Room and Board, [roomandboard.com](http://roomandboard.com); **Painting:** Phil Binaco from Linda Durham Contemporary, 505/466-6660; **Ceiling fan:** Stevens Lighting, [stevenslighting.com](http://stevenslighting.com); **Page 68 Chairs:** Smith and Hawken, [smithandhawken.com](http://smithandhawken.com)



# The Modern Mix

THE GUIDE TO THE LATEST EVENTS, PROMOTIONS AND MORE

## Modern By Design Showhouse | Open June 20-July 12, 2009

Metropolitan Home is partnering with top designers to create the ultimate showhouse in San Francisco's exclusive Pacific Heights neighborhood. Scheduled to open June 17, 2009 with a private launch event, this spectacular renovation project will update a historic 7,000 square-foot home, outfitting it with the latest green technologies and cutting-edge modern design.

Participating designers include: Martha Angus & Phillip Parton, Min|Day, Orlando Diaz-Azcuy Design Associates, Jiun Ho, Nicole Hollis, Gary Hutton, Jay Jeffers, Dowling Kimm Studios, Erin Martin, Steven Miller, Sand Studios, Surfacedesign, Inc., and Throwing Rock. A special thanks to developer, Regina Callan, and architect, Mark English.

The Modern by Design Showhouse will be open on weekends from June 20-July 12th with public hours benefiting The San Francisco Ballet.

Visit [Methome.com/modernbydesign](http://Methome.com/modernbydesign) for more updates.



ANN SACKS

BAYER BaySystems  
customized polyurethanes

BEHR  
GOOD. BETTER. BEHR.

Blue  
Angel

CADE

caesarstone®  
Quartz Surfaces

circa  
LIGHTING  
simplybrilliant®

The Container Store  
The Original Storage and Organization Store®

ELDORADO STONE

elica

THE BOLD LOOK  
OF KOHLER.

LEE

MARVIN  
Windows and Doors  
Made for you.™

MOXI HD DVR

NanaWall®  
Grand Transformations

REAL GOODS  
SOLAR

ROCKY MOUNTAIN

THE  
SHADE  
STORE

sunbrella

thermique™

TRUSTILE®

VIKING

WALKER  
ZANGER

Wood-Mode  
FINE CUSTOM CABINETRY

## mod | Presented by Lincoln

MOD: Matters On Design, along with the all new 2010 Lincoln MKT, will explore the world of design and reveal some of its most creative forces at The Grove in Los Angeles. Experience the Lincoln MKT, where technology and luxury meet in three rows of bliss.

[www.pointclickhome.com/mod](http://www.pointclickhome.com/mod)



LINCOLN  
REACH HIGHER



| For more information, visit Events & Promos online at [www.MetHome.com](http://www.MetHome.com) |

Metropolitan Home

.com; **Pendant lighting:** Stevens Lighting, stevenslighting.com; **Page 70 (photo, bottom right) Table:** Good & Co., 830/249-6101; **Chairs:** Bellini by Heller, helleronline.com; **Page 71 (photo, bottom left) Seating upholstery:** Sunbrella, sunbrella.com; **Page 71 (photo, bottom right) Cots:** Academy Sports and Outdoors, academy.com; **Lighting, fans:** Stevens Lighting, stevenslighting.com.

### Island Outpost

**Architecture:** John Hix Architect, Box 14902, 1.5 Km Kw. 995, Vieques, PR 00765, johnhixarchitect.com; **Design:** Donna Gorman Design, 1115 Weed Street, New Canaan, CT 06840, 203/972-3685, donnagormandesign.com; **Pages 72-73 Table:** Custom by John Hix Architect; **Chairs:** Panton by Vitra, through Design Within Reach,



dwr.com; **Pendant lighting:** Globes from CB2, cb2.com; **Floor lantern:** Dudero from IKEA, ikea.com; **Page 74 Sofa:** Island by Francesco Rota for Paola Lenti, paolalenti.com; **Coffee table, side chairs:** Sand from Paola Lenti; **Side table:** CB2, cb2.com; **Poufs:** Shell from Paola Lenti; **Pillows:** Donna Gorman Design; **Chair, ottoman:** Float from Paola Lenti; **Chaise loungers:** Wave by Francesco Rota for Paola Lenti; **Pages 76-77 Bed:** Custom by John Hix Architect, johnhixarchitect.com; **Scoreces:** Tolomeo by Artemide, through Design Within Reach; **Nightstands:** Peekaboo from CB2, cb2.com; **Rugs:** IKEA, ikea.com; **Lounge chair:** Sand by Francesco Rota for Paola Lenti; **Pillows:** Donna Gorman Design; **Bedspread, curtain:** Vintage from

Marimekko; **Coffee table:** Cruz from CB2, cb2.com; **Page 78 (photo, bottom) Shelves:** Stainless steel from Bradley, bradleycorp.com; **Page 79 (photo, bottom right) Faucets:** Dornbracht, dornbracht.com; **Mirrors:** Bradley, bradleycorp.com.

### American Idyll

**Architecture and design:** Douglas E. Larson, Larson and Paul Architects, 118 Chambers Street, 4th Floor, New York, NY 10007, 212/587-1900, larsonandpaul.com; **Pages 80-81 Awning:** The



Awning Man, awningman.com; **Sectional seating:** Restoration Hardware, restorationhardware.com; **Sliding door:** Marvin Windows and Doors, marvin.com; **Columns:** Classic Builders Resource, columndepot.com; **Page 82 Sofa, coffee table:** Owner's collection; **Stools:** CB2, cb2.com; **Bookcase:** IKEA, ikea.com; **Fireplace:** Countryside Stoves, countrysidestoves.com; **Page 83 Table:** CB2, cb2.com; **Chairs:** Owner's collection; **Table lamp:** Design House Stockholm through The Shop @ Scandinavia House, amscan.org; **Scorece:** Tobia Grau, through GI Lites On Ltd., litesonwest.com; **Page 84 (photo, upper left) Table:** Leonardo by Achille Castiglioni, through the Conran Shop, conranusa.com; **Sofa:** Custom by Tribeca Upholstery and Draperies, 212/349-3010; **Chair:** Arne Jacobsen, through Suite NY, suiteny.com; **Chair upholstery:** Divina Melange by Kvadrat, through Maharam, kvadrat.dk; **Scorece:** Nessen Lighting, nessenlighting.com; **Page 84 (photo, bottom left) Cabinetry, stools, steel backsplash:** IKEA, ikea.com; **Counter, sink:** Vincent L. Adams

Cabinetmaker, 845/855-5825; **Lighting:** Cable lights from GI Lites On Ltd.; **Refrigerator:** Sub-Zero, through Bestco Appliance, 845/463-3411; **Dishwasher:** Bosch, through Ackerman's Appliance, 518/828-7339; **Faucet:** Dornbracht, through Simons Hardware & Bath, simonsny.com; **Page 85 Bed:** Min from Design Within Reach, dwr.com; **Headboard:** Custom from Tribeca Upholstery & Draperies; **Chests:** IKEA, ikea.com; **Scoreces:** Nessen Lighting, nessenlighting.com.

### Be Our Guest

**Architecture:** Eric Logan and Jeff Lawrence, Carney Architects, 307/733-4000, carneyarchitects.com; **Design:** Emily Summers, Wendy Konradi, and Bonnee Sharp, Emily Summers Design Associates, 4639 Insurance Lane, Dallas, TX 75205, 214/871-9669, emilysummers.com; **Page 87 Sofa:** 2491 by A. Rudin, arudin.com; **Sofa upholstery:** Man's Best Friend by John Hutton, through Pacific Design Center, 310/659-2388; **Coffee tables:** Custom by Emily Summers Design Associates; **Rug:** Drenth Heath by Claudy Jongstra, claudyjongstra.com; **Chair upholstery:** Saint Andrews from Pierre Frey, pierrefrey.com; **Dining table:** Gueridon from Vitra, vitra.com; **Dining chairs:** Owner's collection; **Page 88 Side tables:** Tree stumps from Anderle Gallery, 831/624-4199;



**Pendant lighting:** Random Suspension by Moooi, moooi.com; **Page 90 (photo, bottom left) Bed, desk:** Custom by Emily Summers Design Associates; **Chair:** Century Modern, centurymodern.com; **Bedding:** Eileen Fisher for Garnet Hill, garnethill

.com; (photo, upper right) Tile: Avalon from Ann Sacks, annsacks.com; Page 91 Cabinetry: Custom by Carney Architects; Cabinet fixtures: T-Bar from Green Street Details, greenstreetdetails.com; Faucet: Franke, franke.com.

### Designer Greens

Landscape Design: Craig Socia, Craig Socia Garden



Design, P.O. Box 2739, East Hampton, NY 11937, 613/324-8741, craigsocia.com.

METROPOLITAN HOME (ISSN 0273-2858) (USPS 492-870) July/August 2009, volume #41 issue #6 is published monthly except bimonthly in January/February and July/August by Hachette Filipacchi Media U.S., Inc., 1633 Broadway, New York, NY 10019. Periodicals postage paid at New York, NY 10001 and at additional mailing offices. Authorized periodicals postage by the Post Office Department, Ottawa, Canada, and for payment in cash. POSTMASTER: Send address changes to Metropolitan Home, PO Box 51890, Boulder, CO 80322-1890; (386) 597-4375; Fax (303) 604-7644; methome@neo-data.com. If the postal services alert us that your magazine is undeliverable, we have no further obligation unless we receive a corrected address within one year.

Publications Mail Agreement No. 40052054  
Canadian Registration Number 126018209RT0001  
Return undeliverable Canadian addresses to: P.O. Box 503, RPO West Beaver Creek  
Richmond Hill ON L4B 4R6 Canada  
Email: methome@neo-data.com

Custom designs from your photos printed on canvas up to 42"x 42".  
Based in LA, it's fast, easy, fun and very affordable  
**photo wow.com**

**SAVE**  
**CARPET**  
VINYL & HARDWOOD  
**Carpet Express**  
AMERICA'S FLOOR STORE

Residential & Commercial Flooring  
**1-800-922-5582**  
915 Market Street • Dalton, GA 30720  
www.carpetexpress.com

Finest selection of contemporary European wood and gas fireplaces

Phoenix Grill

**WITTUS**  
LIFE BY DESIGN

914.764.5679  
www.wittus.com

ADVERTISEMENT  
**SNOPEA SPROUTS**

SnoPeaSprouts offers infant playwear at its best. Made of soft long-lasting 100% cotton knit with eye-catching prints in stylish yet traditional styles.

www.SnoPeaSprouts.com

**FURNITURE EXCHANGE**

Home accent furniture and decorative accessories.

Shop from our website and save 40% compared to other brands.

Free Shipping on selected items!

**FURNEXCHANGE.COM**

**Makes Glass INVISIBLE**

Walmart AUTO AISLE  
TARGET AUTO AISLE  
COSTCO WHOLESALE  
LOWE'S  
meijer  
mart

FREE offers, tips, videos & more online  
"Leaves no residue like blue water cleaners"  
"Looks like the windows aren't there"  
1-888-STONER3

**Free InvisibleGlass.com**

For "Met Gallery" advertising call 212-767-6724



## Well Grounded

These topographically inspired products will spur you to chart a new course in design.

Clockwise (from top right): Travel the world with *Cityscape rugs* by Monika Piatkowski. Choose from a range of metropolises—from New York to Moscow—or customize one to your own town's terrain (86½"l x 63"w, from \$4,800; HiveSpace.com). Lines on the *Topoware china* by Karola Torkos and Alexandra Deschamps-Sonsino play on the level of your appetite with labels like "modest," "moderate" and "greedy" (from about \$38; Topoware.org). An undulating gessoed frame raises the *Plateau mirror* by Carlos Rittner to new heights (52" w x 47" h x 6" d, \$5,200; 212/689-6903), while the *Dan vase* provides a natural home for a single bud (6" h, \$56; MollaSpace.com).—Produced by Katherine E. Nelson and Callie Jenschke. Written by Flannery Hoard.

NEW YORK 1:2

## Is it a TV?

When your eyes can follow a rocket car test run and still notice a paint scratch on the rear fin, it must be the LG 240Hz TV. The one that delivers your need for speed with a crystal clear picture – so you'll never miss a second of the action.

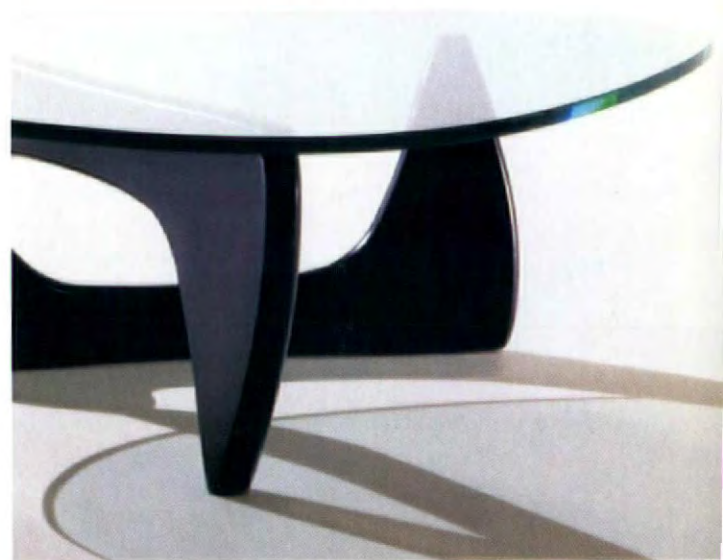
## Or something better?



The LG LCD TV with TruMotion 240Hz. It keeps up with all the action frame by frame to bring you unsurpassed motion detail. [LGusa.com/240Hz](http://LGusa.com/240Hz)



hivemodern.com



eames® molded plywood chairs, 1946 - isamu noguchi coffee table, 1948 for herman miller®

hive 

herman miller knoll kartell flos vitra artifort artek foscariini fritz hansen moooi cherner emeco moroso bensen montis and more!

visit [www.hivemodern.com](http://www.hivemodern.com) or call toll free 1 866 663 4483

free delivery within the continental u.s.