

THE ORIGINAL  
RESTORATION  
MAGAZINE

ORNAMENTAL PLASTER: NEW WORK & REPAIR

# Old House

JOURNAL

simple pleasures in a  
**cottage**  
RETREAT

*Choosing*  
Drapery Hardware

inspiring ideas for the  
**POWDER ROOM**  
Designing a half bath

+ *today's* TILE OPTIONS

  
**HOW TO**  
FIX FURNITURE VENEER  
COOK ON AN OPEN HEARTH  
GLUE-UP CHAIRS

Display until September 12, 2017

PLEASE RECYCLE THIS MAGAZINE  
SEPTEMBER 2017  
\$5.99



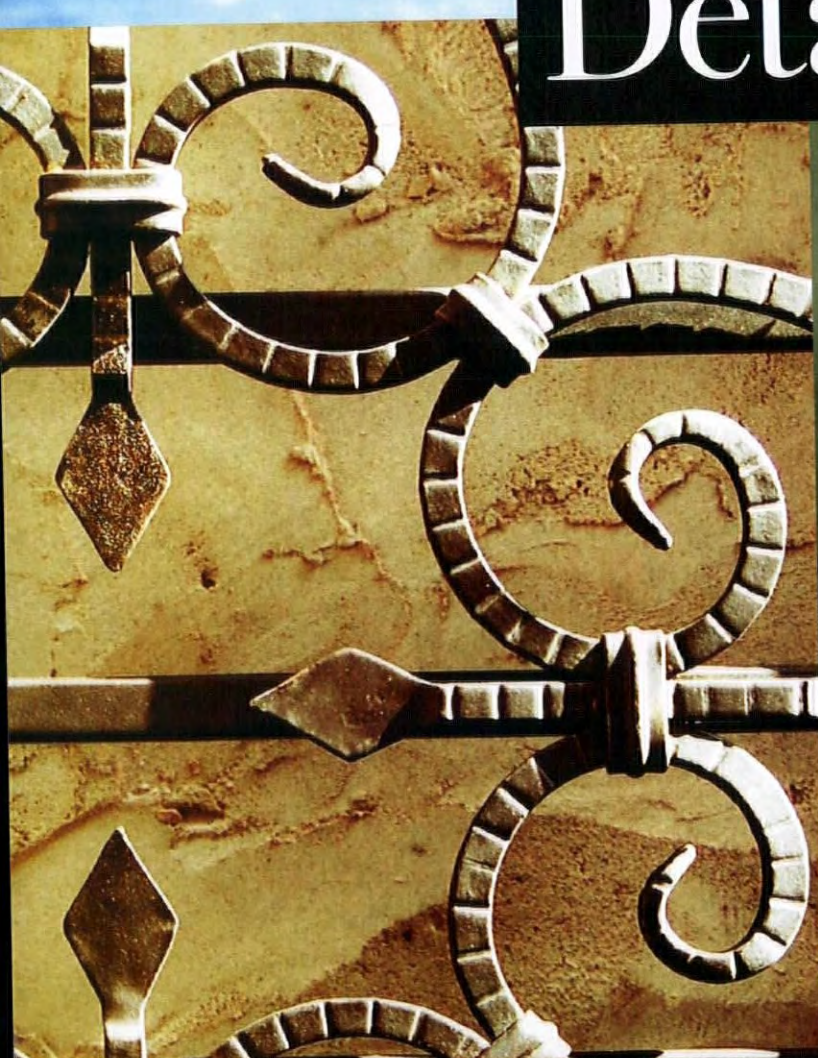




  
KÖNIG  
EISEN



# Details.

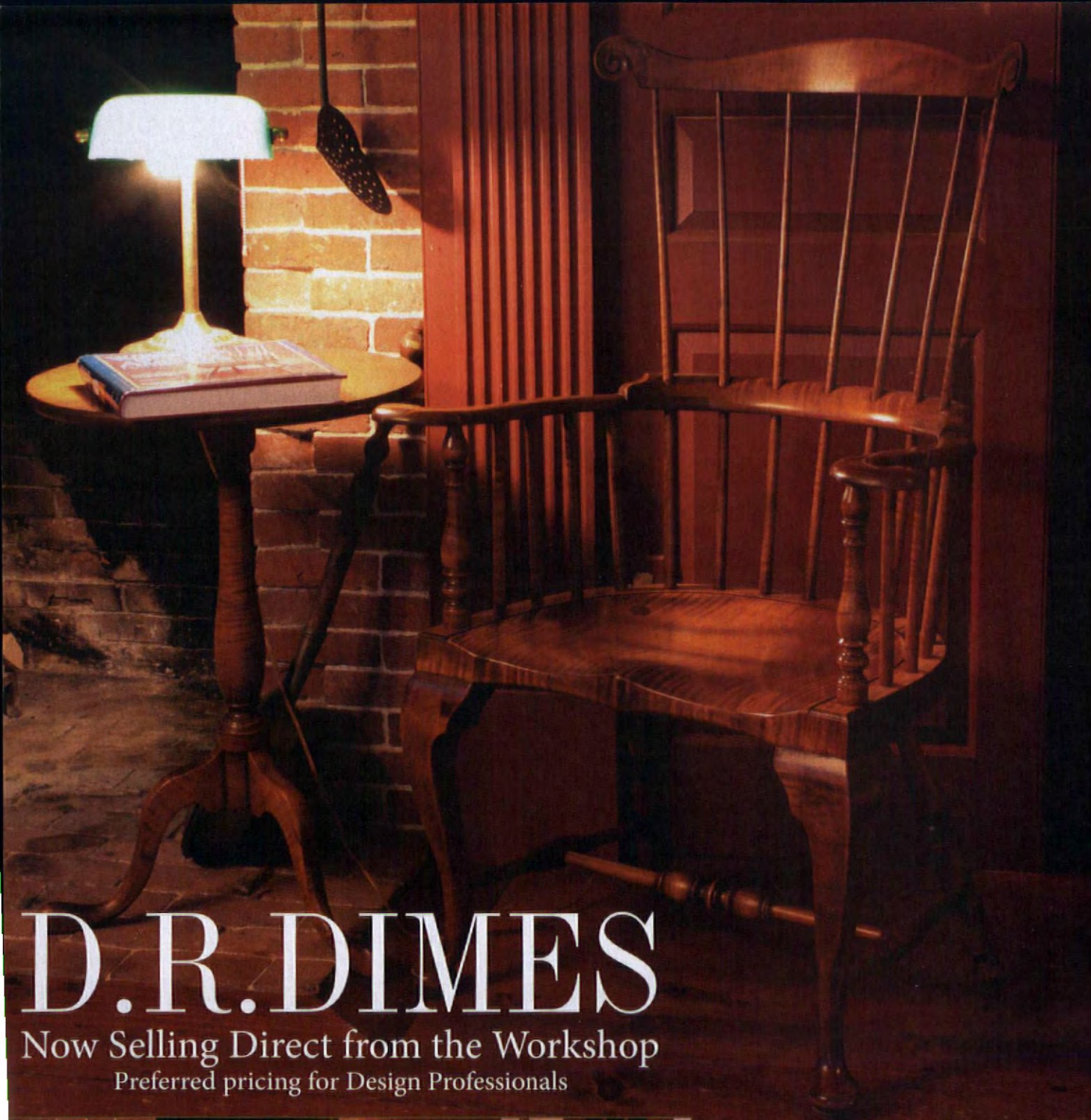


KING ARCHITECTURAL METALS

LOS ANGELES  
DALLAS  
ATLANTA  
BALTIMORE

800.542.2379  
KINGMETALS.COM  
FACEBOOK  
PINTEREST  
YOUTUBE





# D.R.DIMES

Now Selling Direct from the Workshop  
Preferred pricing for Design Professionals



Handcrafted Windsor  
Chairs, Tables, Beds  
Chests & All Manner of  
Period Furniture

[info@drdimes.com](mailto:info@drdimes.com)  
[www.drdimes.com](http://www.drdimes.com)  
603-942-8050

For FREE information go to [www.oldhouseonline.com/lit](http://www.oldhouseonline.com/lit)





*The*  
**PERSIAN**  
CARPET

# THE ARTS & CRAFTS CARPET COLLECTION

*The most authentic and beautiful carpets in the Arts & Crafts tradition  
come from our looms to your floor.*

*Call for a dealer in your area 1-800-333-1801*

[WWW.PERSIANCARPET.COM](http://WWW.PERSIANCARPET.COM)



*New Release Kensington (PC-57A). AVAILABLE THIS FALL!*





Handcrafted in New Hampshire  
Custom cabinetry  
every room in your home

CROWNPOINT  
CABINETRY

800-999-4994 • [www.crown-point.com](http://www.crown-point.com)

Available direct, nationwide

Work with one of our  
in-house design professionals





## TURN YOUR DREAMS INTO REALITY

Marmoleum® Click Cinch Loc is a high quality, easy to install flooring system made from natural materials. Available in a wide choice of colors, this water-resistant floor is ideal for every room in your home. Marmoleum® Click Cinch Loc comes in 12" x 36" panels and 12" x 12" squares and features a patented click system, which guarantees easy, problem-free installation. Because it's easy to clean, Marmoleum® Click Cinch Loc makes life easier for people with asthma, allergies and other respiratory disorders. With Marmoleum® Click Cinch Loc, it really is easy to turn your wildest dreams into a beautiful reality.

**marmoleum**® *click*  **cinch LOC**

creating better environments



[www.forboflooringNA.com](http://www.forboflooringNA.com) | +800 842 7839



**forbo**  
FLOORING SYSTEMS





## The Nation's Most **Complete Collection**



Scan for video

The W.F. Norman Corp. offers quality, hand stamped architectural sheet metal with a vast selection of ornate patterns.

Our original 1898 product line features 140 ceiling patterns and over 1,300 ornaments including rosettes, brackets, finials and more! We offer custom stamping and architectural sheet metal fabrication.

Visit our website to see our products online or send \$3 for our catalog to:  
P.O. Box 323, Nevada, MO 64772.

# W.F. Norman Corporation *Hi-Art* STEELWORK

{web} [www.wfnorman.com](http://www.wfnorman.com) {email} [info@wfnorman.com](mailto:info@wfnorman.com) {phone} (800)641-4038

Tin Ceilings | Cornices | Moldings | Siding | Ornaments | Metal Shingles



{ Bracket #139 }



{ Conductor Head #904 }



{ Cornice #160 }

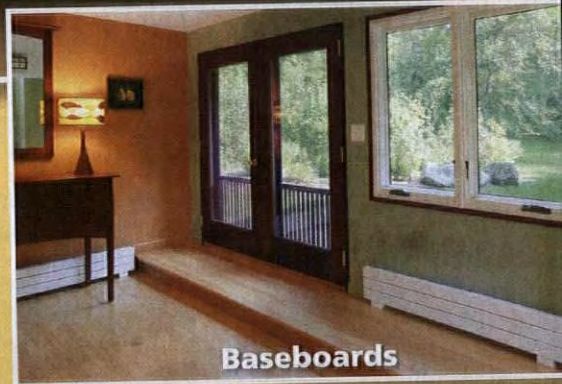


{ Center #162 }



# Cold Outside... Warm Inside

New in Electric, the Toasty Comfort of Runtal Radiators  
Can Now Be Enjoyed by All!



**runtal** has long been world-renowned as the premium manufacturer of Euro-style radiators for hot water and steam heating systems.

We are pleased to introduce a Runtal Electric line that includes Wall Panel, Towel Radiator and Baseboard designs.

Suitable for both retro-fit and new construction, Runtal Electric products provide a very efficient and comfortable radiant heat.

They are an excellent source of primary or supplemental heat and a problem-solver for areas needing additional heat.

They are attractive (available in over 100 colors), durable and easy to install.

For more information or a dealer near you, please call 1-800-526-2621 or online at: [www.runtalnorthamerica.com](http://www.runtalnorthamerica.com).



Our Showroom is located at: 187 Neck Road Ward Hill, MA 01835 (Haverhill) Tel: 1-800-526-2621



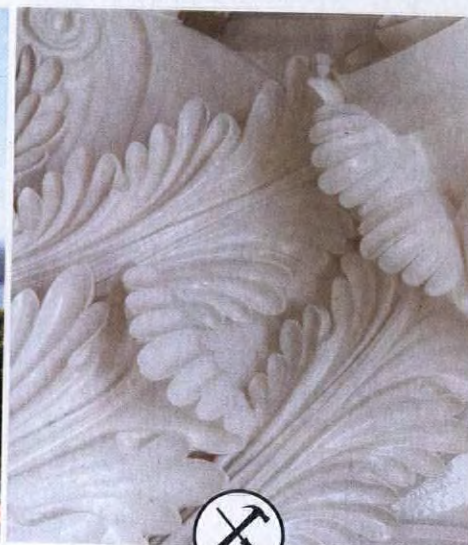
# OLD HOUSE JOURNAL contents

SEPTEMBER 2017



## INSPIRE

- 14 **House of Sunshine, Arts & Crafts Inside**  
A ca. 1900 cottage gets a loving redo over time.
- 22 **AT HOME WITH MORRIS**
- 24 **Georgian by Candlelight**  
An 18th-century house in Maine changes its owners' lives.
- 30 **A TASTE OF THE PAST**
- 32 **SUCCESS!**  
Tile creates a design motif.
- 34 **MY NEIGHBORHOOD**  
Monrovia in Los Angeles.
- 36 **WINDOW SHOPPING**  
The Prairie influence.



## RESTORE

- 40 **Ornamental Plaster**  
What you need to know to appreciate, repair, and renew this venerable enrichment.
- 48 **QUICK MAKEOVERS**  
Easy fixes for your furniture: wax, veneer, upholstery.
- 50 **TOOLS + MATERIALS**  
A round-up for fall projects.
- 52 **KNOW-HOW**  
Window dressings complete a room: a tutorial on drapery hardware ca. 1860 to 1910.
- 56 **STUFF A PLUMBER SCREWED UP**  
A sink stopper that won't stay put may be an easy fix.
- 58 **SALVAGE IT**  
Two ways to create a coat rack from an old porch post.
- 60 **DO THIS, NOT THAT**  
The right way to secure those loose chair stretchers.



## DESIGN

- 64 **Powder Rooms**  
The trials and joys of designing small half baths perfect for quirky old houses.
- 72 **VINTAGE VISION**  
A Gordon-Van Tine entry, 1926.
- 74 **KITCHENS + BATHS**  
Kitchen with an English accent.
- 76 **FAVORITE THINGS**  
Tile everywhere.
- 78 **THEY STILL MAKE...**  
Glass house conservatories.
- 88 **REMUDDLING**  
Dutch Colonial tragedy.

### Also In This Issue

- 8 FROM THE EDITOR
- 87 RESOURCES



COVER PHOTO BY GROSS & DALEY. STORY ON PAGE 14.





*If you lived here in this house, would you be the same you?*

## Under the Influence

Of course your house affects your life, in obvious ways. My young parents moved us from a cold-water flat over a garage to a two-family house with a yard—and a swing set!—and life was very different. I'm sure my own children were affected, for better or worse, by growing up in a house that was ramshackle at first (they rode tricycles inside), then under messy, asthma-inducing renovation for eight years, and finally the neighborhood hangout (beach towels for all).

I learned all about houseplants because my top-floor Brooklyn floor-through had a south-facing bay with three big windows. In that same 1890s apartment, I decided to wear sweaters in winter because the furnace couldn't keep up, and I figured out how to open window sash and the old iron roof skylight at just the right time to create airflow on summer days.

Old-house owners will tell you the house changed their lives, even if in subtle ways. We live room-by-room, for example, having chosen not to tear out all the walls for open-plan sight lines.

We've gravitated toward DIY projects, maybe rediscovered lace curtains. Some houses are not subtle in their demands: the Bennetts (p. 24) bought a well-preserved Georgian survivor in Maine, and years later they eat by candlelight, cook in a yawning hearth, and are on a first-name basis with the renowned local archaeologist.

For a long time I've held that I'd be skinnier if I lived in a Richard Neutra mid-century house. How could you possibly eat much while occupying spare, modern rooms framed by glass and filled with low, angular, colorless furniture? The opposite end of the spectrum is right there in southern California: Storybook houses. Turns out the builders were a bit eccentric, and I've met contemporary occupants who are, too. Did nonconformists pick these houses—or did the houses themselves, medieval stage sets and Hobbit abodes, cast a spell over their owners?



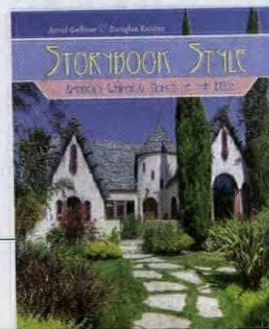
*Patricia Poore*

## SIDE NOTES

### STORYBOOK

In 2001, *Storybook Style* introduced a rambunctious subset of 20th-century Historical Revival architecture. Now comes a new second edition, with more houses in more of the country plus archival images. These charming houses are theater: romantic, medieval, humorous. (Think thatched roofs and timbers, clinker-brick chimneys, turrets and catslides and Hansel and Gretel.) The style is based on Hollywood set designs and, although concentrated in California, it spread coast to coast.

"The Storybook style materialized as the court jester among 1920s styles..." writes practicing architect and author Arrol Gellner, introducing a text as effervescent as it is scholarly. Photographer Douglas Keister, who created the landmark book series on bungalows, captures every detail. **Storybook Style** (2nd edition, Schiffer, July 2017), in stock now.





# *JP Weaver Co.*

SINCE 1914



PHOTOGRAPHY BY STEPHANIE CROCE

CELEBRATING OUR  
*100<sup>th</sup>*  
YEAR OF CREATING  
FINE ART MOULDINGS

**FINE INTERIOR ARCHITECTURAL MOULDINGS**  
DESIGNED AND HANDCRAFTED IN THE UNITED STATES SINCE 1914

**WWW.JPWEAVER.COM**

JP WEAVER COMPANY • SINCE 1914 • 941 AIR WAY • GLENDALE, CA 91201 OHJ9/17  
TEL (818) 500-1740 • FAX (818) 500-1798 • INFO@JPWEAVER.COM • WWW.JPWEAVER.COM



# Old House JOURNAL

**EDITORIAL DIRECTOR** Patricia Poore  
**MANAGING EDITOR** Lori Viator  
**SENIOR EDITOR** Mary Ellen Polson  
**WEB EDITOR** Reese Ruland  
**EDITORS AT LARGE** Gordon H. Bock  
 Brian D. Coleman  
 Lynn Elliott  
 Ray Tschoepe

**ART DIRECTOR** Inga Soderberg

**DESIGNER** *Gabriela Crespo*

**CONTRIBUTORS** Regina Cole  
 James C. Massey  
 Shirley Maxwell

**ACCOUNT EXECUTIVES** Becky Bernie  
 Carol Murray

**DETROIT SALES MANAGER** Keith Cunningham

**GROUP PRODUCTION DIRECTOR** Barbara Van Sickle

**PREPRESS MANAGER** Joy Kelley

**PREPRESS SPECIALIST** Galen Nathanson

**AD PRODUCTION COORDINATOR** Caitlin O'Connor

**SENIOR GRAPHIC DESIGNER** Michelle Miller

**CIRCULATION DIRECTOR** Stephanie Flanagan

**DIRECTOR OF RETAIL SALES** Susan Rose



When I was studying architecture, I thought I'd design new, modern, sleek homes. Little did I know that my heart would come to love the intricate details in old houses. Everything—from mouldings to appropriate vintage lighting—excites me and inspires my design work. I don't have an old house yet, but I will someday!



**VICE PRESIDENT, PUBLISHER** Peter H. Miller, Hon. AIA  
**SALES DIRECTOR** Heather Glynn Gniazdowski  
**CREATIVE DIRECTOR** Edie Mann  
**DIRECTOR OF DIGITAL MARKETING** LJ Lindhurst  
**BUSINESS MANAGER** Patricia Pensa  
**OPERATIONS MANAGER** Carolyn Walsh  
**MARKETING MANAGER** Griffin Suber



**PRESIDENT & CEO** Andrew W. Clurman  
**SENIOR VICE PRESIDENT, CFO & TREASURER** Michael Henry  
**CHIEF INNOVATION OFFICER** Jonathan Dorn  
**EXECUTIVE VICE PRESIDENT OF OPERATIONS** Patricia B. Fox  
**VICE PRESIDENT, CONTROLLER** Joseph Cohen  
**VICE PRESIDENT, RESEARCH** Kristy Kaus  
**VICE PRESIDENT, IT** Nelson Saenz  
**AIM BOARD CHAIR** Efrem Zimbalist III

**BUSINESS OFFICES**  
 5720 Flatiron Parkway  
 Boulder, CO 80301  
 TELEPHONE (800) 826-3893 EDITORIAL (978) 282-3170

**LOGO LICENSING, REPRINTS AND PERMISSIONS**  
 Brett Petillo, Wright's Media  
 (877) 652-5295 | aim@wrightsmedia.com

**SUBSCRIPTION INQUIRIES** (800) 234-3797

#### PRIVACY OF MAILING LIST:

We rent our subscriber list to reputable companies. If you do not wish to receive promotional material from other companies, please call us, toll free, at (800) 234-3797.



Visit Us Online For A  
**FREE LOOK BOOK**  
[www.KennebecCompany.com](http://www.KennebecCompany.com)



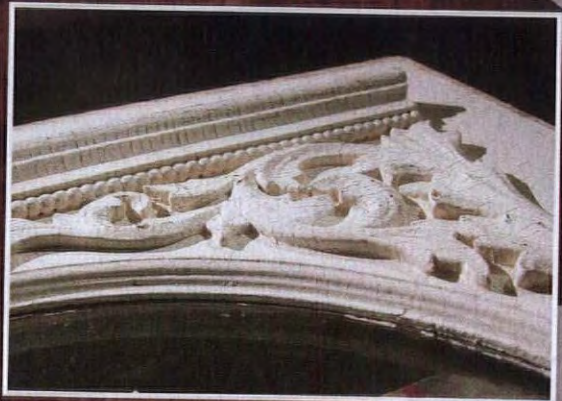
**KENNEBEC Co.**  
 BEFITTING CABINETRY

207.443.2131 | One Front Street Bath, Maine

[www.KennebecCompany.com](http://www.KennebecCompany.com) | f H I



# Safe & Smart Restoration



Franmar's **BLUE BEAR™** products are the safe and smart solutions for your restoration needs. BLUE BEAR Paint and Urethane Stripper is a tried and true stripper, used by consumers for over two decades. This consumer trusted remover effectively removes multiple layers of paint, varnish, enamel, urethane, other single-component coatings, and lead based paint. Made with soybeans, Paint and Urethane Stripper is a safe, low odor, non-caustic, green coating remover for any DIY project.



Call us today! 800.538.5069  
Or visit us online: [www.franmar.com](http://www.franmar.com)  
Find a dealer near you: [www.franmar.com/find-distributor](http://www.franmar.com/find-distributor)



Made in the USA



# 2017

The

# American Artisans SHOW

Sponsored By

Old House  
Antiques

early  
Homes

featuring  
Historic Restoration

Friday, October 27th ~ 5PM-9PM  
Saturday, October 28th ~ 10AM-5PM  
Sunday, October 29th ~ 11AM-4PM

Location: The Sturbridge Host Inn Sturbridge Mass PH: 1-717-677-0706



www.theamericanartisansshow.com

# 2017

# THE YORK FOLK

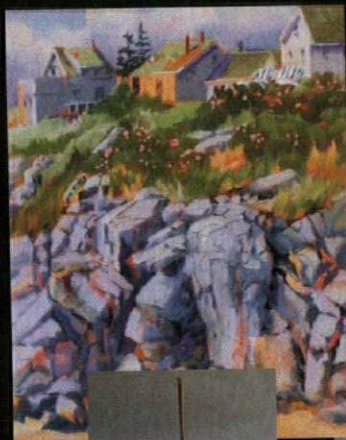
www.yorkfolk.com

# & FINE ART SHOW

Featuring Historic Restoration

CELEBRATING  
AMERICAN ARTISANS  
AND  
CRAFTSMEN  
York, PA

Friday, November 17th ~ 5PM-9PM  
Saturday, November 18th ~ 10AM-5PM  
Sunday, November 19th ~ 11AM-4PM





# INSPIRE

## A LONG VIEW

**IT TOOK HER YEARS TO FURNISH**, with a good eye and inexpensive little treasures, a cottage that's modest in all ways save for the view. **page 14**

14

### HOUSE OF SUNSHINE

Intimate rooms in a transitional cottage.  
+ AT HOME WITH MORRIS

24

### GEORGIAN BY CANDLELIGHT

Preserving an old house in Maine.  
+ COOKING IN THE HEARTH

### 32 SUCCESS!

34 MY NEIGHBORHOOD  
36 WINDOW SHOPPING







**LEFT** The house is modest, the setting spectacular. The side yard has a view to the Ashokan Reservoir.

**BELOW** The rich field and trim colors took the owner years to perfect to her satisfaction.

**OPPOSITE** Most of the art in the house was drawn or painted by family and friends. Wallpaper is 'Vine', by the English Arts & Crafts designer William Morris.

# house of sunshine

Plain-spoken and sturdy, the ca. 1900 house wants to be Arts & Crafts inside. With period colors and Morris-designed wallpapers, a delighted owner has played up the natural chestnut woodwork. **BY MARY ELLEN POLSON | PHOTOGRAPHS BY STEVE GROSS & SUSAN DALEY**



**M**ORE THAN A CENTURY AGO, this artist's family from New York began summering in a town later famous for a concert (which actually took place 90 miles away). Even then, Woodstock, New York, was a magnet for the artists, actors, and musicians of the avant-garde. | Now she is the owner of a compact, transitional folk Victorian/Arts & Crafts house on the side of a mountain nearby. She always knew she would return. "There's no other place like it," says the bright, energetic Midwesterner. "My mother would say, 'First there were Bohemians. Then there were the Beatniks. Then in the Sixties it was the hippies.' So Woodstock has been this way for a long time."



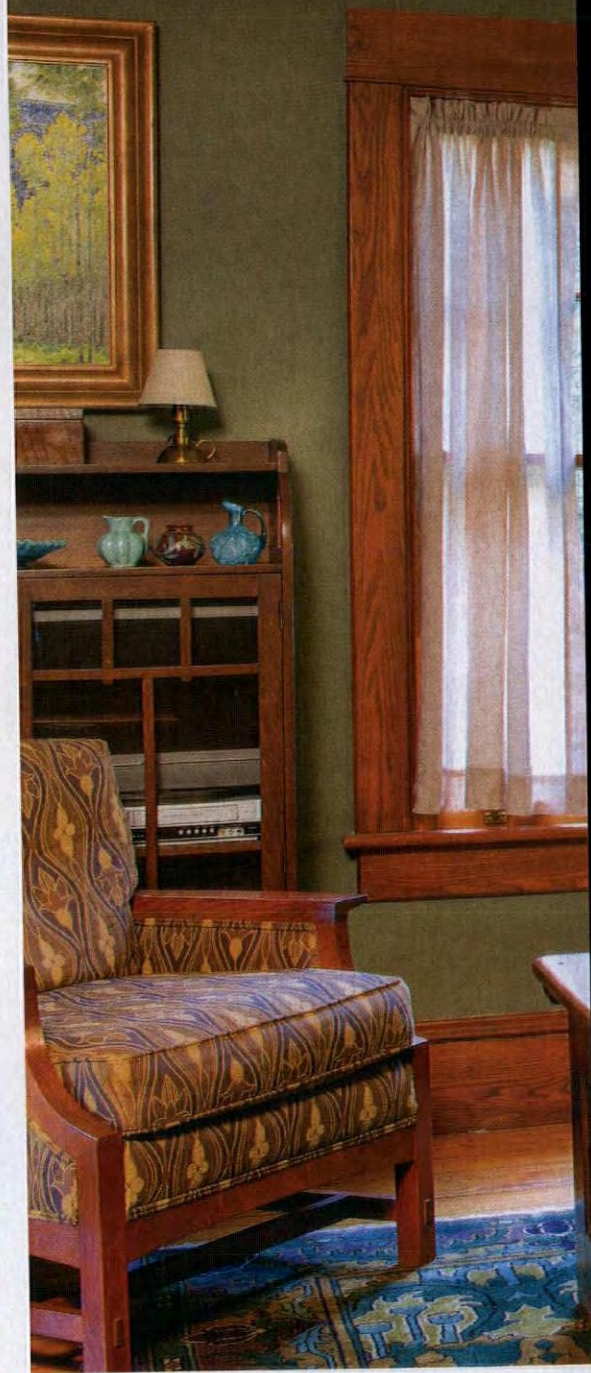




**RIGHT** A silver coffee service and cut crystal decanter sit on the sideboard.

**BELOW** The oak dining-room chairs were an eBay find. Morris's 'Vine' wallpaper of 1874 is seen here in a colorway no longer in production.

**BOTTOM** The owner lined the back of the piano with the wallpaper as a backdrop for the new-issue Stickley sideboard. The ceramic tomatoes at one end are the subject of an oft-told family story.



When she began searching for a permanent home 12 years ago, her only desire was a small house on a pretty piece of land. "This was the only house I saw that really met that criteria."

No one had said anything about a view. When she first arrived at the house, however, she wasn't sure she even needed to see inside before making an offer. Picturesquely set on a level lot that slopes gently down to pockets of meadow and woodlands, the house commands an extraor-





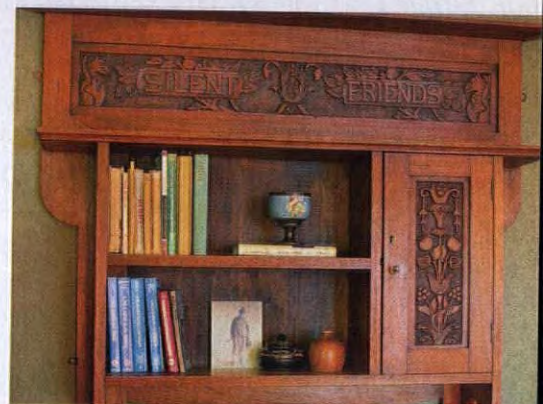
The Morris-design pillows on the Stickley sofa in the living room came from Red House, William Morris's home near London. The French chest that serves as a coffee table is chestnut, like most of the woodwork on the parlor level. The Arts & Crafts bookcases were eBay finds. The chair is Stickley, upholstered in Schumacher fabric. **BELOW** Found online, the hand-carved "Silent Friends" bookshelf came from a San Francisco antiques dealer.

dinary 50-mile swath of countryside that encompasses the vast Ashokan Reservoir, the water supply for New York City, as well as a local landmark, Skytop Tower at Mohonk Reserve, 25 miles to the south.

Sited on property in a bowl with sweeping south-facing views, the house is filled with sunshine. Light pours into almost every cranny. "There are huge light shifts in every room," says the owner, noting that a paint color that looks brown in some lights turns purple in others.

Trim colors were especially challenging, with tints that work in some lights clashing in others. "I seem to perceive more color differences than other people," she says. Painting the exterior has been a multi-year exercise in painstaking trial and error. "I had to test at least eight different colors in order to find one I could live with."

Inside, all of the rooms are small but nicely proportioned with high ceilings. The house has a typical turn-of-the-







A photograph of a wooden staircase with a chestnut wood finish. The staircase has a wooden railing and a stained glass window. A wooden side table with a rotary phone and a lamp is in the foreground. A red and black patterned rug is on the floor. A circular callout box contains text about the wood and the chandelier.

### ORIGINAL WOOD IS CHESTNUT

The highly figured wood of the staircase and parlor colonnade is American chestnut, never stained or painted. The entry hall chandelier is a restored antique dating to the early 20th century.





20th-century layout. There's a side hall entry with the main parlor to the right and a staircase in its original unpainted chestnut leading up at the left. The parlor connects to a kitchen last renovated in the 1940s or '50s—the cabinets are Lustron-era steel with shiny recessed pulls—which in turn opens onto a dining room that doubles as a music room.

"Most people assume anything old is really well built," says the owner. Though this house is at least a century old, it was constructed as a summer house. Parts of it are cobbled together with materials that came easily to hand. The walls are an older form of drywall, which was a plus after she stripped wallpaper: they were easily repaired with a skim coat.

The front porch roof sheathing was also original, but no beauty: it had been put together with mismatched pieces of scrap wood, tree branches, and sheet metal. The flashing over the kitchen window is an old Quaker Oil sign. "The house may be old, but they wasted nothing . . .

"When I first bought the house, all the walls were white. I really wanted mid-

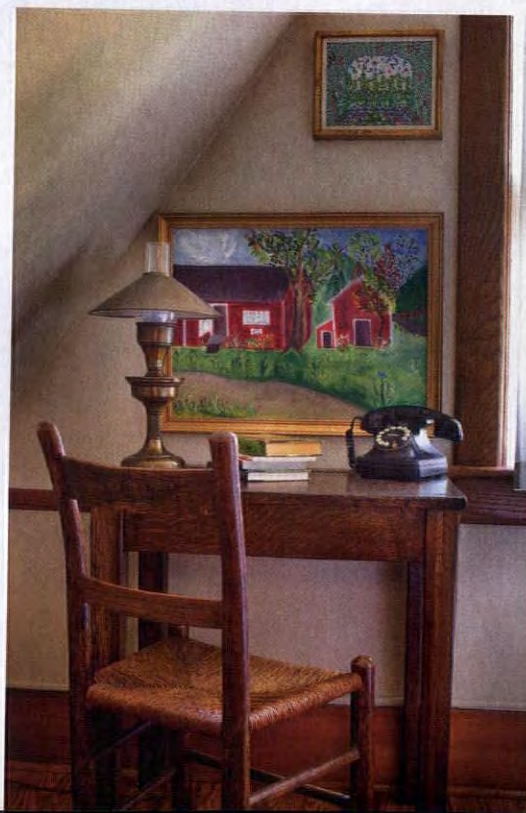
tones to dark to complement the woodwork." Saturated colors on the walls play up the rich tones of the original chestnut and fir woodwork and collections of paintings and family pictures. Apparently there were a lot of artists in the family, and it's easy to mistake a family portrait photo in the upstairs hall for Myrna Loy in one of her "Thin Man" movie concoctions of the 1930s and '40s.

Speaking of Myrna Loy, the owner was startled while watching TV one night to see an awfully familiar-looking kitchen in one of the series' later movies. "My kitchen came straight out of 'The Thin Man Goes Home', from 1945!"

She had previously lived in St. Louis, Missouri, in a three-storey architect-designed townhouse. That one was perfect for her role as a single mother: "It looked old, but it wasn't," she says. "I loved that."

A long exit from her career in the Midwest gave her time to consider what possessions, if any, she would bring with her when she finally made her move. Ultimately, "the only things I moved from St. Louis were paintings and books. The first

**ABOVE** Because the ceiling in the smallest bedroom has sloping eaves, it made sense to paint walls and ceilings a single color. **BELOW** A vintage-reproduction telephone sits on the oak desk in an upstairs bedroom.







Small but nicely proportioned with high ceilings, rooms inside the cottage are intimate spaces filled with little treasures. Both the wraparound porch in front and the big screened porch on the rear are larger than any room in the house.

## TIPS FOR COUNTRY LIVING

Country houses are by definition surrounded by nature, which means local residents like voles, spiders, and mice can invade house and lawn. To cut down on spiders, the owner sprays a mixture of lavender oil and water on areas where cobwebs collect. Spiders, who have taste buds on their legs, hate the flavor of lavender along with peppermint, lemon, citronella, tea tree, and clove.

To make a spray, mix 5 to 7 drops of essential lavender or another natural oil with 3 to 5 drops of liquid dishwashing liquid in a quart of warm water. Shake well. "I find I wash the siding a lot less," she says.

For moles and other critters who like to eat plants and shrubs, mix together  $\frac{1}{4}$  cup of castor oil and  $\frac{1}{4}$  cup of liquid dishwashing detergent. When ready to apply, mix 3 tablespoons of the mixture with a gallon of warm water. On areas where you suspect varmints are at work, pour just enough to dampen the surfaces.





## LAYERS OF TIME IN THE KITCHEN

Postwar steel cabinets with chrome accents, a collection of old Ball jars, Griswold cast-iron skillets on open display, and a now-vintage stove sit lightly in a room with original layout and wood trim.



night I was here, I slept on the floor with a blanket and pillow.”

With an eclectic yet discerning eye, she furnished the house with vintage treasures that fit specifically into the compact floor plan. Most were acquired inexpensively. An exception is the chestnut living-room coffee table, which is French. “I just instantly knew I should buy it.” The top slides out for impromptu meals.

Many, many items came from eBay, and quite a number were acquired at the local dump. There are a few family pieces, notably a purely decorative ceramic piece crowned with tomatoes resting on the dining-room sideboard. Her father, she says, was a bit thrifty, even when it came to buying his wife presents. “My mother’s

strategy, whenever she wanted something, was to buy it for *him*.”

Besotted with the tomatoes, she bought the colorful piece as a present one December. “When my father opened it on Christmas morning, we all—my brothers and I—burst out in gales of laughter.”

She’s able to laugh at herself with just as much glee. The ‘Strawberry Thief’ pillows on the sofa in the living room came from Red House, the home Philip Webb designed for William Morris in Bexleyheath. The pillows were reasonably priced, “but it probably cost me \$200 to ship them,” she says. “So I call them the world’s most expensive pillows.”

FOR RESOURCES, SEE PAGE 87.

**ABOVE** Chrome-trimmed metal cabinets line one wall of the kitchen. The Ball jars were rescued from the local dump.

**OPPOSITE** (top) A well-used collection of cast-iron skillets hangs from oak cleats mounted on the wall above the range. (left) Guests immediately gravitate to the sun-soaked back porch, which runs the full width of the house. (right) A rustic front gate structure separates the house from the road.



# AT HOME WITH MORRIS

## PATTERNS NEVER OUT OF STYLE

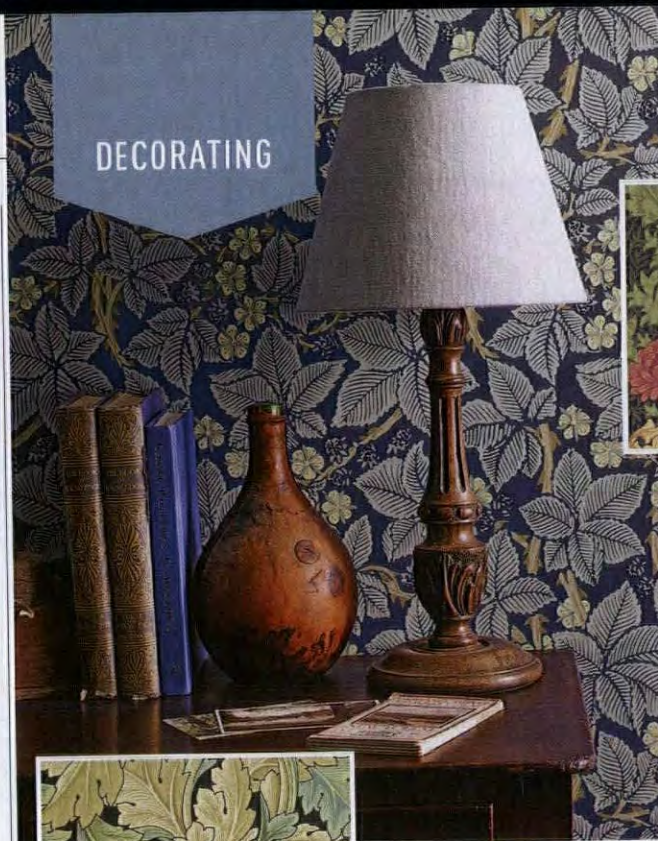
A genius of English interior design and decoration in the second half of the 19th century, William Morris (1834–1896) was also a prolific poet, visionary thinker, and reform-minded socialist who created his own craft guilds as well as the eponymous Morris & Co.

A true creative spirit, William Morris worked fluidly and collaboratively with other designers and artists, from Philip Webb—the architect who designed his first home, the influential Red House—to Henry Dearle, responsible for many of Morris & Co.'s most recognizable wallpaper and textile designs.

Many Morris designs have been continuously available since 1875, when the final iteration of his company, Morris & Co., was established. Morris & Co. still owns all of the original wood blocks used for wallpaper production, as well as original log books, match pieces, and samples of fabric and wallpaper.

William Morris wallpaper and textiles became harder to get in North America when Historic Style, a company in Victoria, British Columbia, closed in 2016. (Both of the Morris papers shown in the “Sunshine” house were bought there.) Fortunately, Morris & Co. is expanding its offerings in the U.S. Many patterns and designs that were only available in the U.K. can now be seen and purchased online through Style Library. American-based sources for Morris-inspired papers and textiles include Bradbury & Bradbury, J.R. Burrows & Co., Trustworth Studios, and Cooper Lace.

FOR RESOURCES, SEE PAGE 87.



**FROM LEFT** Authentic reproductions of ‘Acanthus’, ‘Bramble’, and ‘Chrysanthemum’ come from today’s Morris & Co.

**BELOW** Trustworth Studio’s ‘Bamboo’ is based on an 1872 design by E.W. Godwin, later adapted by Morris & Co.



**RIGHT** Burrows & Co.’s ‘Priory Garden’ is a re-creation of an 1890s Morris-style wallpaper discovered in Massachusetts.

**BELOW** Available as curtain panels and tablecloth from Cooper Lace, ‘Cherwell’ is based on an 1887 design from the original Morris archives. **BOTTOM RIGHT** Bradbury & Bradbury’s ‘Marigold’ is a close copy of the William Morris original from 1875.





OTHER HVAC COMPANIES REALLY DON'T  
WANT YOU TO CUT OUT THIS OUTLET.

## The Unico System®

Comfort & Efficiency Fit For Your Home

(Actual Size)

That's because when you place it on your floor, ceiling, or wall, you will begin to understand the simplicity of adding Unico System air conditioning to your home. In addition to outlets that are barely noticeable, the Unico System's air handlers and flexible supply tubing fit simply above ceilings and below floors, which means no ugly soffits, no noisy registers, and virtually no need for remodeling in homes without ductwork. You will enjoy the efficient, comfortable surroundings found only with the industry-leading Unico System.

To find a Unico System installing contractor in your area, visit [unicosystem.com/contractor](http://unicosystem.com/contractor) or call (800) 527-0896

EST 1928

# WOODCRAFT®

QUALITY WOODWORKING TOOLS • SUPPLIES • ADVICE®

## COUNT ON US FROM START TO FINISH®

Whether you're fixing up your latest flea market treasure or redoing Grandma's buffet, Woodcraft has everything you're going to need to do it right – from products like Black Dog Salvage Furniture Paint and General Finishes Gel Stains to brushes, cups, rags, glue and much more. Need repairs before refinishing? Let us offer expert advice. We are the Woodworking Superstore for DIYers! Come on in and visit with us!

Follow Us:



For A Free Catalog Or  
To Find Your Local  
Woodcraft Store, Visit  
[woodcraft.com](http://woodcraft.com) Or  
Call 800-225-1153.

17HJ09H







**T**HIS HOUSE fulfilled twin longings for Paula and Harvey Bennett: to live in a Colonial-era house, and to breathe fresh, clean air. Back in 2003, the couple had met with a business associate in Damariscotta, Maine. For twenty years they'd been living in the mid-Atlantic region. But "when we got to Maine, we took a deep breath, looked at each other, and pledged to move here one day," says Paula.

It was only a year later when they moved to the Pine Tree State, where a bracing breeze refreshed their lungs and an 18th-century house stole their hearts. Paula and Harvey live in environmental and historical mindfulness in this two-and-a-half-storey, center-chimney Georgian. With telescoping ells, the house is a textbook example of New England's attached farmhouses. Rebuilt ca. 1797 to replicate a 1742 house largely destroyed by fire, the house continues to reveal its history.

"We met in college in the Sixties," Harvey says, "and soon found we love the same things. One of our first trips together was to Colonial Williamsburg."

**RIGHT** The dining room has a Federal-era sensibility with a table built from a single cherry slab by Robert Ortiz Studios. **INSET** Harvey and Paula in the garden. **ABOVE** The original house was built in the Georgian style of the mid-1700s; rebuilding and additions date to the 1790s, 1870s, the early 20th century, and 1990.





# GEORGIAN BY CANDLELIGHT

*The preservation of an 18th-century house in Maine has been life-changing for a couple who found their best possible place.*

BY REGINA COLE | PHOTOGRAPHS BY SANDY AGRAFIOTIS





### FEDERAL STAIR

With its raised paneling, fluted pilaster, and scalloped spandrels, the staircase probably dates to the 1797 rebuilding of the house after a fire. The house retains early windows and wide-plank pine floors.





"We love 18th-century architecture and design," his wife chimes in. "The scale, lightness, sense of grace—we can't get enough!" So when they saw Maine's great stock of 18th- and early 19th-century houses during that first visit, they began a search.

"We found this house online. After we came up to look at it, we dutifully looked at ten more before returning to the house we had fallen in love with before we ever stepped inside," Harvey laughs. Paula adds that the house was comfortable from the day they moved in. "Houses do have vibrations," she says.

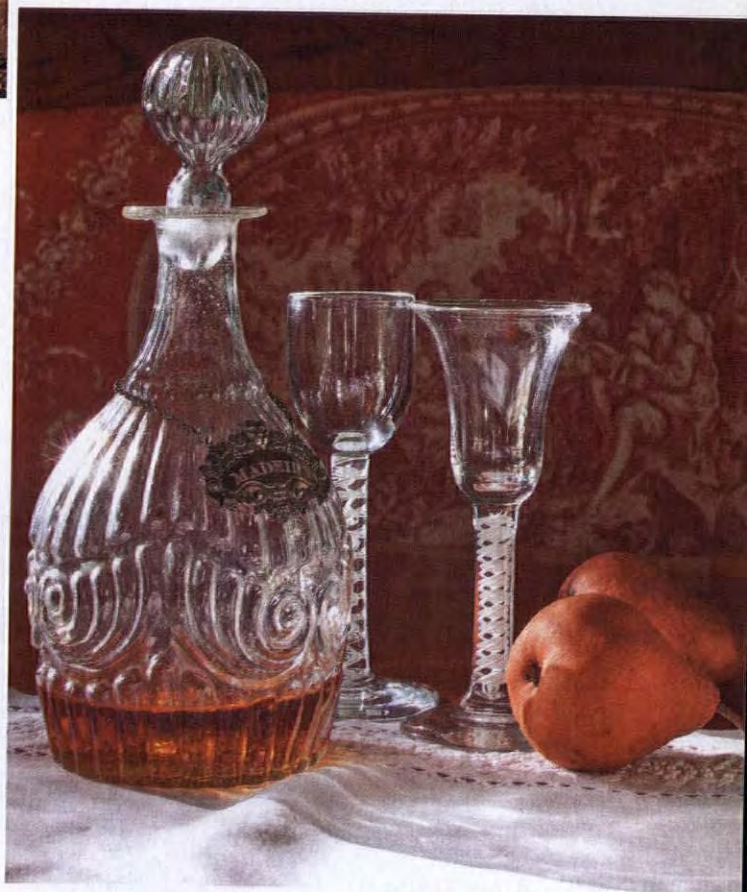
Via an ongoing archaeological dig, the couple have deepened their knowledge of late 18th-century southern Maine history, while learning about the early years of this house. The General Ichabod Goodwin House remained in the same prominent local family's hands for generations, serving as a tavern for much of the late 18th century. Elements of the earlier Georgian-period house were likely re-used in the 1797 structure, including the west-facing front door surround.

"That was a mystery solved," Harvey says. "We had always thought the styling of the front door was much earlier than 1797."

For three decades, Harvey has used firewood for heating and, sometimes, for cooking. In a house with sections built between 1742 and 1990, the owners simultaneously restrict and customize power sources for energy conservation—and with respect for the historic interior. They've found furnishings at local antiques shows and shops, but also have purchased suitable reproductions online. "The tricky part is getting the scale right," Paula



**ABOVE** Bold woodwork in the best parlor is typical of the 1790s section of the house; historically accurate reproduction carpets were made for these rooms.



**ABOVE** Glassware of the 18th century glows against the Gainsborough silk upholstery of the dining-room settee.  
**TOP LEFT** In the dining room, once the second-best parlor, original Delft tiles face a late 18th-century fireplace.





**ABOVE** Dr. De Paoli reaches into a pit, dug by his students, where the presence of charred and melted building elements confirmed that a large fire was in the house's long-ago past.



**LEFT** Archaeologist Dr. Neill De Paoli makes notes during the front-yard dig at the Goodwin House, while the homeowners look on.

**DIGGING THE PAST** A surviving house built at the crossroads of an early New England settlement is bound to deliver all sorts of historic fragments. All the more at this place, whose 18th-century builders were political, economic, and military leaders. | An archaeological dig at the front corner of the General Ichabod Goodwin House was sponsored by the local historical association, and led by Dr. Neill De Paoli. It has delivered a treasure trove of historic information. Although 1795 had long been the accepted date for this house, new evidence indicates that it was built in 1742, that there was a fire in 1794, and that the house was rebuilt by 1797. Evidence also suggests that the early keeping room, the northwest parlor, and the chambers above are much older than the rest of the house. | Artifacts suggest that the house served as an early tavern, and those dating from ca. 1650–1730 confirm what architectural historians have guessed: that there was a building here even before 1742. Shards of German and English stoneware jugs, tankards, glass wine bottles, English clay smoking pipes, English delftware and Portuguese or Spanish majolica plates and bowls, as well as lead and glass quarrels from casement windows have been found.

“We sleep in the 18th century,” is how Paula explains their use of the house. Electronics, modern lighting, and the TV occupy the 1990 family room.



#### *More Online*

See a high-style Georgian interior: [oldhouseonline.com/articles/authentic-georgian-interior](http://oldhouseonline.com/articles/authentic-georgian-interior)







**TOP** The owners frequently practice hearth cooking in the oldest part of the house. **ABOVE** An antique silver epergne hold treats during a colonial-era dinner cooked over the fire in the keeping-room hearth. **OPPOSITE** (bottom) At one end of the keeping room, near the dining room, the original built-in hutch displays antique serving ware, acting as a butler's pantry.

says. "Reflected in the size of furniture, and the patterns of damask, the proportions of the 18th century were more refined than they are today. Not that we're purists," she hastens to add. "My goal is to evoke the 18th century, not to reproduce it."

Luddites, they are not. In their big, comfortable "1990 room," they watch television, read by good light, and use electronic devices. But when they are in the 18th-century part of their house, they don't use electricity.

"We sleep in the 18th century," is how Paula puts it. "We eat by candlelight in the dining room." Power is available, she explains, but they don't feel the need to use it. "Candlelight looks and feels right, and everyone looks so beautiful."

The house is preserved more than it is restored. Fortunately, it retains its original nine-over-six windows, painted wide-plank pine floors, early Georgian mouldings, and an eight-foot-wide hearth perfect for spit-roasting. But these owners kept the evidence of many generations of occupants. From the early 18th-century sensibility of the massive keeping-room fireplace all the way to the gracefully integrated kitchen . . . from the antique front hall with its early 20th-century wallpaper to the vaulted 1990 family-room addition, this house comfortably accommodates the new alongside a deep history.

PAULA BENNETT has written a memoir of their time in the house: *Imagining Ichabod* (Bauer and Dean Publishers, 2016).



# A TASTE OF THE PAST

HEARTH-COOKING 18TH-CENTURY RECIPES. By Regina Cole

➔ Preservationist and homeowner Harvey Bennett began his experiments as an open-hearth chef more than 30 years ago. The practice has become more than a charming, occasional re-enactment. He and Paula agree that fireplace-cooked food tastes better: "I think the bricks add something special to the flavor," Paula insists, as does, of course, the smoke.

"Cooking in fireplaces first appealed to me because it uses the same fuel for more than one purpose," Harvey says. "I move the andirons and cook over hot coals. Grilling is easy, but roasting is more complicated." He has explored techniques for cooking stews in a cast-iron kettle with hot coals heaped on the lid.

The couple have collected and developed recipes that date to the 1700s. "Just like there are various versions of popular recipes today, historic recipes differ on ingredients and their quantities," Paula says. "Still, I don't think I have ever seen modern recipes in which measurements diverge as dramatically as they do in 18th-century recipes for Indian pudding." An old New England dessert whose popularity has faded, Indian pudding is still a favorite for this Maine couple on cold winter nights.



Homeowner Harvey Bennett tends to a spit as meat roasts in front of the open fire.



1 2



5 3

1. A leg of lamb roasts on a spit over potato pudding.
2. Chestnut fricassee braises in a pan set on a trivet over coals.
3. Sally Lunn bread is one old recipe for baking in the beehive oven.
4. Oysters are set briefly on a grill rack over flame.
5. Dinner is served.



## INDIAN PUDDING

serves 6-8

- 3 cups milk
- $\frac{2}{3}$  cup cornmeal
- $\frac{1}{2}$  teaspoon salt
- $\frac{2}{3}$  teaspoon ground ginger
- $\frac{1}{2}$  teaspoon ground cinnamon
- $\frac{1}{2}$  teaspoon ground nutmeg
- 1 tablespoon butter
- $\frac{1}{3}$  cup molasses
- $\frac{1}{8}$  cup maple syrup
- $\frac{1}{8}$  cup sorghum syrup\*
- 1 egg, lightly beaten
- 1 additional cup milk

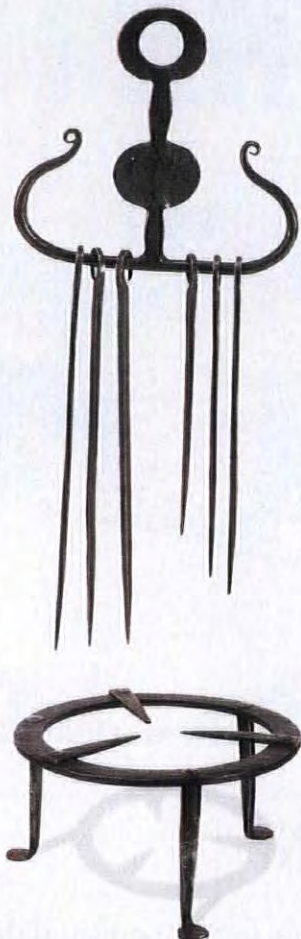




**LEFT** The skillet with legs is called a spider. **BELOW** A set of skewers hangs on their holder. **BOTTOM** A cooking trivet; all tools forged in the USA, from Historic Housefitters Co.

## EQUIPMENT

Many hearth cooks collect antique implements: bellows, pokers, tongs, shovels, spiders and trivets, Dutch ovens, salamanders, skillets, griddles, broilers, and weight-and-pulley mechanisms that kept roasting spits turning. Pots and trivets will be placed above the fire, not in front of it, and will have to stand up to the heat. (During the Colonial Revival, brass trivets and implements historically used in England in front of coal fires were sold as American, but they're not for cooking over a wood fire.) Use well-seasoned, hot-burning hardwoods such as maple, oak, ash, and hickory. Avoid resinous pine and fir.



- Heat brick oven to around 400°F (or conventional oven to 350°); grease a 2-quart casserole.
- Scald milk and slowly whisk in cornmeal. Over very low heat, stir continually until thick. Add remaining ingredients except last cup of milk.
- Pour into casserole and place uncovered in oven.
- After 45 minutes, pour 1 cup milk on top and bake for 3 hours in brick oven, 1½ to 2 hours in conventional oven, until top is brown and crusty and liquid thoroughly absorbed.
- To serve, pour heavy cream over the pudding (it's traditional), or use vanilla ice cream.

*\* Paula found some historic recipes calling for sorghum, with a taste similar to molasses but lighter. She also added maple syrup, assuming that a thrifty New England household would have it on hand, the Colonists having learned to tap trees from the Indians.*

## Slate

The Incredible **GREEN** Building Material  
For your Period Style Home, Inside & Out

Kitchens ■ Baths ■ Flooring ■ Roofing ■ Landscaping



Natural earth colors: Green, Gray, Black, Purple, Red  
Antibacteria ■ Stain resistant ■ Noncombustible  
Honed to a satin smooth finish, unlike any other stone.

Middle Granville, NY 12849; 518-642-1280 • Monson, ME 04464; 207-997-3615

Quarried in the U.S.A.

# SheldonSlate.com





SUCCESS!



## DESIGN MOTIFS FOR A KITCHEN

Inspiration for the kitchen came from original built-ins in the living and dining rooms, from the existing Batchelder fireplace—and from our beloved backyard oak tree. **By Tammy Guarino, Monrovia, Calif.**

**Thirteen years passed** before my husband, Frank, and I tackled remodeling the kitchen in our 1926 English Cottage. We're fortunate to have old photos of our house to guide restoration, but none show the original kitchen. To lend authenticity, we took cues from the adjoining rooms, which have built-in cabinets and a Batchelder tile fireplace.

Our first challenge was to find the right contractor, and we did! Tom Radu has a love of old houses, refined skills, and the patience to take my vision and make it reality. We made a commitment to live in our house with no access to the kitchen for up to five months, using our 1926 bathroom (and its small sink) as our only access to running water. This was hard; we longed for the aroma of simmering sauce, the crackle and smell of bacon!

Stove and fridge were moved to the dining room (now *another* room was unusable). The kitchen was reduced to debris. The good news: we were able to repurpose about 20% of the existing countertops and cabinetwork in a kitchenette for a guest space

located at the back of the property. We had assumed, incorrectly, that when this kitchen was remodeled in 1988 by the second owners, they had addressed the knob-and-tube wiring. To our horror, the original wiring remained, unsafely and illegally patched into. A complete electrical overhaul followed. Our new motto became "always plan for the worst."

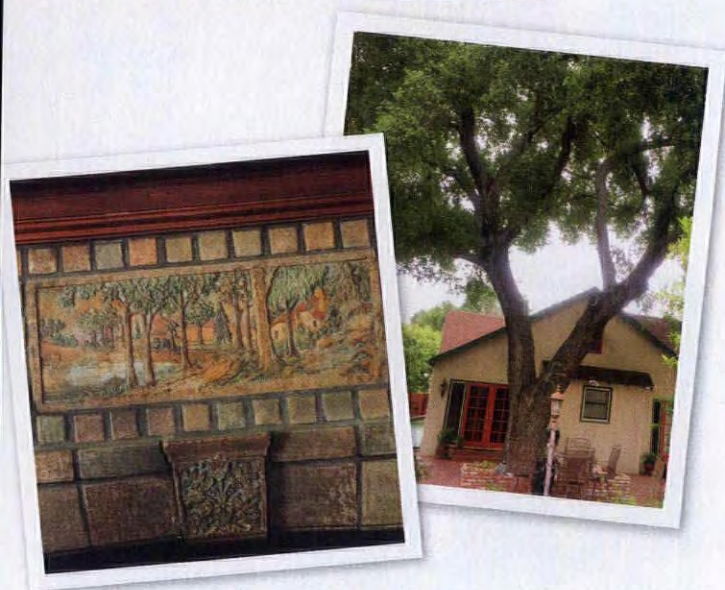
We knew that we would use decorative tile for the backsplash, after a lecture about Batchelder reproductions given by Cha-Rie Tang from Pasadena Craftsman Tile. Cha-Rie visited us, inspected the fireplace, and designed both original and revival tiles for us, all in the Batchelder tradition.

For countertops I'd wanted Carrara marble, but on further research I realized it would be impractical for us. I decided to go with Brazilian green soapstone; soapstone is unaffected by acidic and alkaline substances and by heat. It would only need periodic oiling. We finished our kitchen in time to host a pre-house tour dinner for the Monrovia Historic Preservation Group in 2016.





**LEFT** The new kitchen cabinets were based on original built-ins still in the house. **INSET** Before the recent renovation, the kitchen was a mashup of different periods—and the wiring was unsafe. **ABOVE** The English Cottage-style house dates to 1926.



**ABOVE** (left) This is a detail of the original Batchelder tile fireplace in the living room, which provided inspiration for the kitchen. (right) An old oak tree inspired the tile motif over the stove. **RIGHT** Over the colorful tile backsplash, the decorative tile motif on the range hood was cued by that tree in the backyard.







### DOUBLE GABLE BUNGALOW

This landmark 1909 Bungalow is the long-time home of Jim Wigton, who carefully restored it. (Wigton is president of the Monrovia Historic Preservation Group, MoHPG.) It is notable for a dramatic front-gable porch with battered piers of stone, wide eaves, and projecting rafter tails. To the right is a two-storey wing with a stone chimney and eaves similar to those of the porch.

### TRANSITIONAL STYLE

Monrovia boasts some Victorian houses dating from the town's earliest years, as well as a sampling of turn-of-the-century transitional styles. This 1903 house is an unusual mix of late-Queen Anne traditions with the new bungalow type. The wide eaves with flat consoles are distinctive, but also note that there are no fewer than three patterns of wood shingles in the gable: fish-scale, square, and diamond.

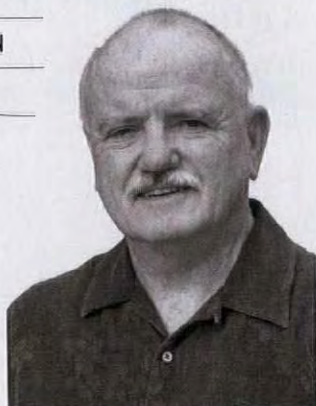
### PRAIRIE INFLUENCE

The Mediterranean-style house with Prairie School influences was built in 1922. It has the typical red barrel-tile roof and covered entry, along with a low wall defining the front terrace. The floor-to-ceiling triple French doors on the first floor are echoed by similar windows on the upper floor. Decorative iron railings at the windows, or balconettes, add European flavor.



*"We took our time choosing Monrovia and our bungalow. People in this town care about their houses and what happens to them."*

JIM WIGTON



### UPTON SINCLAIR HOME

The novelist lived here 1942–1966; the garage was his study. The Mediterranean house designed by Frederick H. Wallis was built in 1923 of poured concrete. Inside: Batchelder tile. A National Historic Landmark, the house is privately owned.



# Monrovia / *Greater Los Angeles, California*



Established in 1887, this town was named for railroad superintendent turned entrepreneur contractor William Monroe. Its growth followed the evolution of transportation: the Pacific Electric trolley system, then Route 66 (the town's Foothill Blvd.), and finally the freeways (I-210) and commuter rail. The thriving commercial district boasts the eye-catching Aztec Hotel, built in 1925. Residential blocks rise toward the San Gabriel Mts. Most houses are in the California Bungalow genre, with Spanish Colonials, Tudors, and a few ready-cut houses from firms such as Pacific Homes. A strong preservation ordinance has protected individual historic buildings since 1992. Monrovia's Wildrose Historic District is just a single block, but 140 buildings in town have been landmarked. A ca. 1920 bungalow court is among them, and so is a 1965 Mid-century Modern house. **By James C. Massey and Shirley Maxwell**



## A SPANISH TUDOR?

The extra-steep gables on this 1920s "Old English" or Tudor Revival house identify its style precedent, while the round-arch windows and white stucco walls are reminiscent of Spanish traditions. The house approaches Storybook style. Monrovia's English Tudor houses add variety to the bungalows and Craftsman influence that prevails.

## OUT OF PASADENA

One of Monrovia's finest homes is this 1909 two-storey example by noted Los Angeles-area architect Arthur Kelly. It is reminiscent of the famed Gamble House in nearby South Pasadena, by Greene and Greene, for whom Kelly once worked. Unusual is the angled bay on the right, which reflects the street-corner location.

## BUNGALOW ERA

Two-storey homes with bungalow or Craftsman features are common, as in this 1909 house also by Arthur Kelly. Of special note is a prominent front porch with a porte-cochere at the left, battered stone posts, and projecting rafter tails. The quintuple-sash bow window on the second floor is unusual, as are the small Craftsman sash that flank it.





# Prairie Influence

Frank Lloyd Wright and contemporaries created the Prairie School: a new American architecture in the Midwest.



Rene Susak, Windermere Stellar, renesusak.com

## PORTLAND, OR / \$1,375,000

Low-pitched pyramidal rooflines and wide entry and upper porches mark this 1913 stone and clapboard bungalow as Prairie School-inspired. A living room with a stone hearth opens into the paneled dining room through a wide colonnade. Rooms have restored woodwork and period lighting.



Stephanie Oliver, Dielmann Sotheby's, sothebysrealty.com

## LADUE, MO / \$899,000

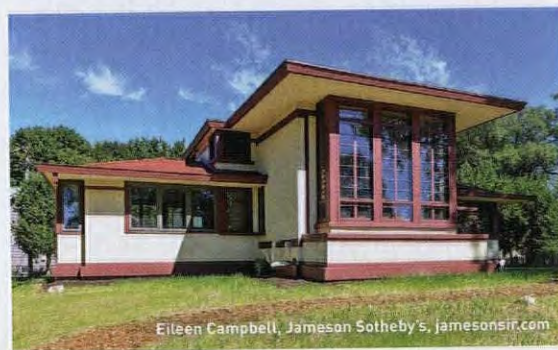
Low slung with deep eaves, an exceptionally wide chimney, and rows of horizontal windows, this architect-designed Mid-century Modern home shows clear Prairie influence. Inside, Prairie themes continue with a delineated, vaulted ceiling over a sunken living room, and a full-width brick fireplace with rectangular pilasters.



Joe Shoemaker, Encore Sotheby's, sothebysrealty.com

## INDIANAPOLIS, IN / \$539,900

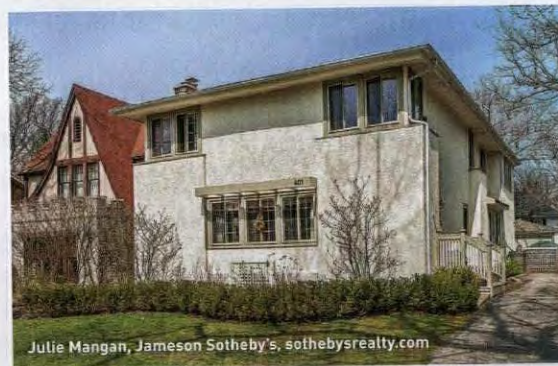
This 1920s Prairie-style Foursquare with massive brick porch piers retains its original staircase and passage doors with cut-crystal knobs. In the kitchen, find a Wright-inspired high-back bench nook. Outside there's a period-sympathetic three-bay garage.



Eileen Campbell, Jameson Sotheby's, jamesonsir.com

## EVANSTON, IL / \$625,000

Designed in 1928 by Prairie School architect John Van Bergen, this bi-level landmark was relocated in 2015 and fully restored. The centerpiece is a wood-trimmed vaulted ceiling overlooked by a gallery with balustrade. Woodwork and lighting are intact.



Julie Mangan, Jameson Sotheby's, sothebysrealty.com

## GLENCOE, IL / \$829,000

Built in 1921, this stucco Prairie-style house has corner casement windows and a central row of horizontal windows. Interior features include a broad fireplace trimmed with brick set in even, rectilinear rows, a high-backed Prairie-style bench, and a built-in buffet.



# ALLIED WINDOW, INC.

CUSTOM

## "Invisible" Storm Windows®

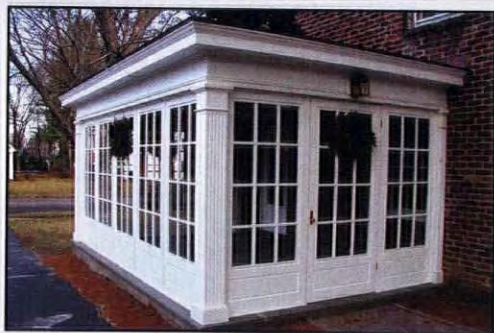
Allied Window has a strong commitment to high quality custom storm windows & the capability to meet the needs of any home or other building with single glass.

Interior & Exterior Windows  
Custom Colors,  
Custom Screens & Special Shapes  
Historic, Residential &  
Commercial Buildings  
Energy Savings—Approximately 50%  
Sound Reduction—Up to 50%



11111 Canal Road, Cincinnati, Ohio 45241 [www.alliedwindow.com](http://www.alliedwindow.com) • 800.445.5411 • fax: 513.559.1883

## WOOD SCREEN DOORS & STORM DOORS



Over 300 Styles • Any Size • Various Wood Types • Arch Tops • Dog Doors  
Wood Security Doors • Staining & Painting • Window Screens & Storms  
Custom Designs • Made in the USA • Available Direct, Nationwide • And Much More!



COPPA WOODWORKING, INC.

(310) 548-4142  
[www.coppawoodworking.com](http://www.coppawoodworking.com)



Your Best Source for Victorian Hardware and Lighting



Vintage Hardware & Lighting [www.vintagehardware.com](http://www.vintagehardware.com) 360-379-9030



# Big Wally's PLASTER MAGIC®

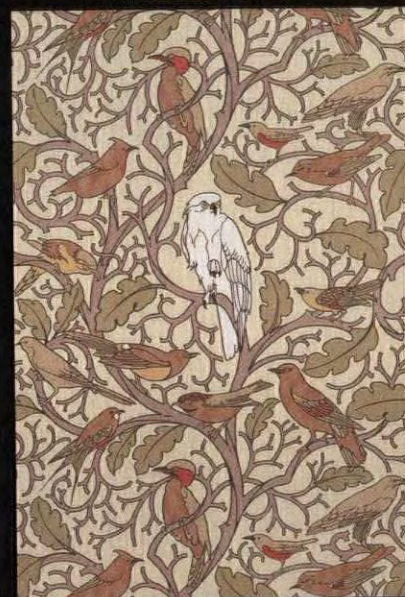
FOR THE ULTIMATE PLASTER REPAIR®

**FAST & EASY TO USE**  
**FIXES WALLS & CEILINGS 4 SIMPLE STEPS**

Plaster Magic is the ONLY product that delivers as promised,  
permanently repairing cracked and loose plaster on wood lath or brick.

Find Products, Videos & Repair Tips at [www.plastermagic.com](http://www.plastermagic.com)

TRUSTWORTH STUDIOS  
WALLPAPER



M<sup>0</sup>B SCENE  
CFA V<sup>0</sup>YSEY

WIDTH 21 INCHES • 7 DOLLARS 91 FT

[WWW.TRUSTWORTH.COM](http://WWW.TRUSTWORTH.COM)

35 508 746 1847 35



# RESTORE



## ORNAMENTAL PLASTER

Appreciating an ancient craft and a material both wondrous and durable; with repair tips. **page 40**

**48**

**QUICK MAKEOVERS: EASY FURNITURE FIXES**

Using hard wax, repairing furniture veneer, reupholstering an armchair.



**50 TOOLS + MATERIALS**

**52 KNOW-HOW**

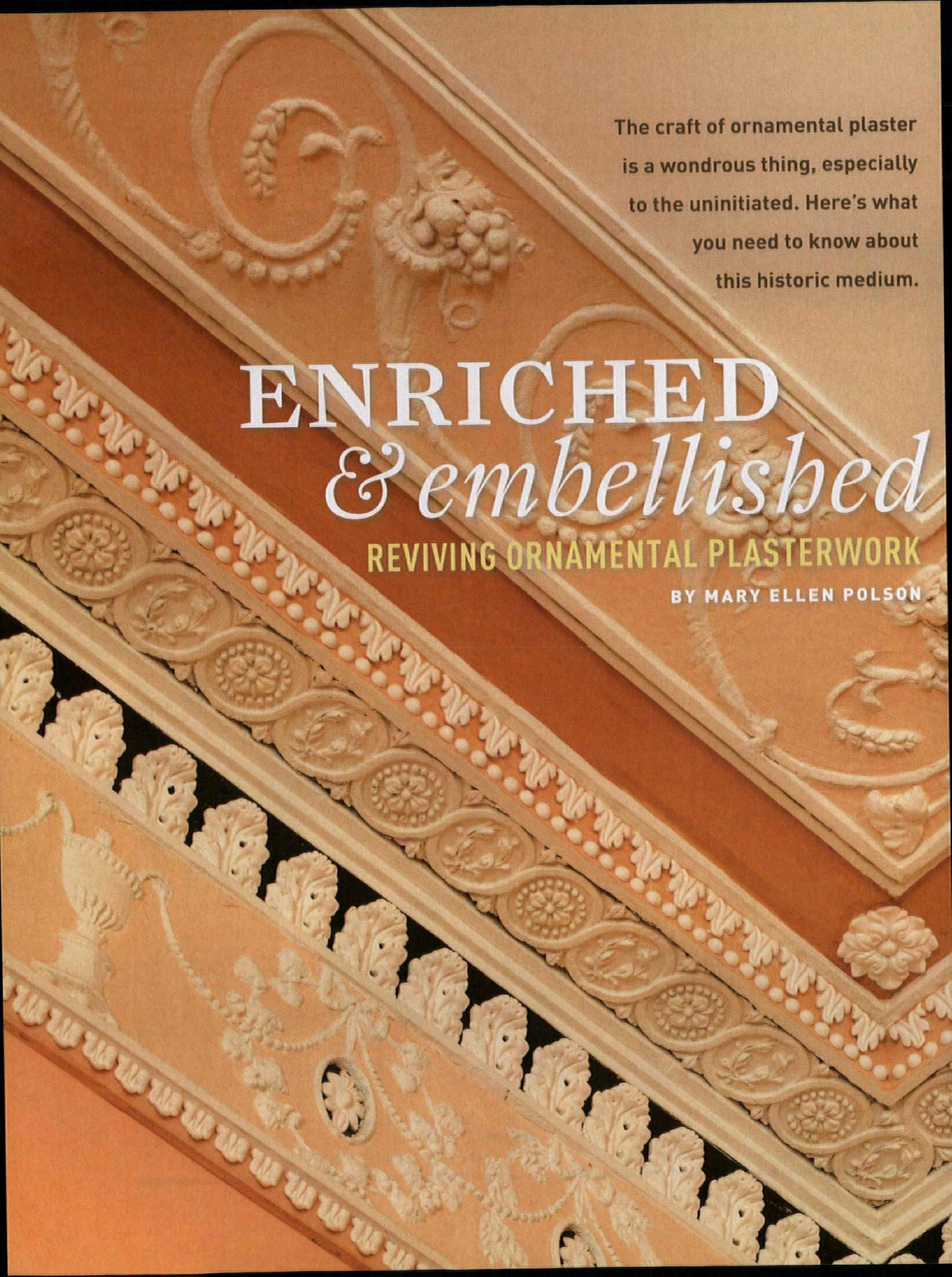
**56 STUFF A PLUMBER SCREWED UP**



**58 SALVAGE IT**

**60 DO THIS NOT THAT**



The background of the entire cover is a close-up photograph of ornate, light-colored plasterwork. The design features diagonal bands of repeating circular medallions, some containing floral or foliate motifs. Interspersed with these are larger, more complex designs, including a prominent grapevine cluster with leaves and grapes in the upper left, and a large, stylized urn or vase motif in the lower left. The plasterwork is set against a warm, orange-brown background.


The craft of ornamental plaster  
is a wondrous thing, especially  
to the uninitiated. Here's what  
you need to know about  
this historic medium.

# ENRICHED & embellished

REVIVING ORNAMENTAL PLASTERWORK


BY MARY ELLEN POLSON





Running plaster mouldings requires sliding a tool fitted with a knife over fresh plaster in multiple passes. Once you've got the hang of it, the undulating shapes and recesses of the cornice should form quickly.

**OPPOSITE** Delicate plasterwork in the Adamesque style in the Nathaniel Russell House in Charleston, S.C.



**High ceilings and well-proportioned rooms cry out for ornamental treatment.** Before elaborate woodwork became widespread through innovations in millwork in the late 19th century, ornamental plasterwork was part of the decorative package for many high-style homes. Georgian, Federal, Greek Revival and Neo-Grec, Second Empire, and Neoclassical houses were not considered finished without decorative cornices, medallions, mouldings, and enrichments sculpted in plaster. Over time, many of these ornamental treasures have fallen into disrepair or been lost altogether. Re-creating missing plaster ornament can be a challenge, but you have options: today's possibilities for replacement include real plaster, age-old composition ornament, and more modern resin- and urethane-based enrichments.

ALL PHOTOS BY JON CRISPIN (EXCEPT AS NOTED); GROSS & DALEY (LEFT)





## THE PRO TIP

***Because plaster is porous, even interior ornament should be primed and painted. It's usually easier to do this before the finished ornament is installed.***

An intricate acanthus leaf cornice from Foster Reeve & Associates demonstrates that the art of hand-carved and -cast plaster ornament is alive and well.

**Plaster** is an ideal medium for decorative work because it can take fine detail. It is also versatile: plaster can be formed into ornate, multi-layered ceiling medallions, intricate friezes replete with scrolls and swags, or long runs of coved cornice work. Plaster can be cast, shaped, carved, sculpted, sanded, or cut. Easily installed, it can be glued, nailed, or simply attached to a surface with more plaster. Plaster also doesn't shrink or warp.

Ornamental plaster does require a certain amount of craftsmanship to make and install because working time is limited and there is no set recipe for achieving a desired consistency for the wet plaster.

There are two main categories for ornamental plaster: cast work and run work. **Cast ornament** is formed by pouring wet plaster of the right consistency into a mould (see "A New Medallion," p. 46). Ornamental plaster for cast ornament is simply a mixture of finely ground gypsum and water. The gypsum powder must be very fresh to interact properly with water and cure to a uniformly hard surface. Once the plaster sets, the mould is removed. Additional cast pieces may then be applied to the base ornament as enrichments, enhancing the dimensionality of the piece.

**Running ornament** involves creating a profile by pushing a forming tool over plaster while it's still wet, then repeating the process until the correct proportions and details are reached. The two methods for creating runs of plaster include running the plaster in place on a wall or ceiling, and running it on a bench for later installation.

Re-creating elaborate cornices for one or more rooms—especially when run in place—is most likely a job for a professional plasterer with years of experience. Repairing a small section of cove moulding or cornice, however, is a good introduction to this ageless craft, especially if the work can be done with one or more helpers.

The first step in making running ornament is to create an open box-like tool called, fittingly enough, a mould. Custom made for each project, a mould is composed of two pieces of sturdy  $\frac{3}{4}$ " plywood, one mounted perpendicular to the other, and strengthened with an L-shaped brace and a diagonal handle on the back side. The flat piece is called the slipper, and the vertical piece the horse (see "Knife and Mould," opposite page). The horse is fitted with the knife: a metal template cut with the profile of the moulding to be created. Once fully assembled, the mould is passed over the plaster multiple times to form the finished profile in finest detail.

**Running the Moulding** Set up a long smooth work surface, such as an old Formica countertop, as a bench (professionals use long marble or stone slabs). The top surface and the table edge must be perfectly straight, as any irregularities will be transferred to the moulding.

To help the completed runs separate easily once complete, apply a layer of common vegetable oil to the surface of the bench. Set up the mould and do a dry run along the bench. The knife should move smoothly across it without chattering or binding.

As soon as the plaster is ready, pour a line of plaster at least as



# Knife & Mould

A mould knife is a metal template cut with the reverse profile of the moulding to be created or restored. Making a knife involves finding a way to trace the existing or desired cornice profile, then transferring it to a piece of galvanized sheet metal. Lighter weight metal (22-gauge, for instance) can be cut with shears, but isn't as stiff and durable as 16-gauge, which requires cutting with a saber saw.

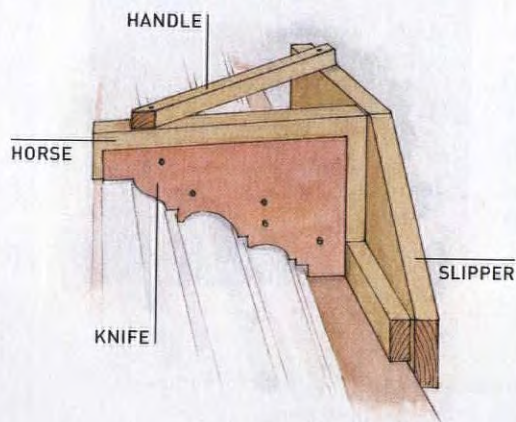
To repair an existing moulding, you'll need to obtain a cross-section

through the plasterwork from wall to ceiling. An easy way to do this is to saw through a sound part of the existing cornice with a cope saw, then insert a sheet metal blank in the slot. Once in place, trace the profile directly onto the template. (The slot can later be refilled with fresh plaster.) If you've already removed the damaged section from the wall, you may be able to get a tracing from one of the cornice ends if the profile is perfect and undamaged.

Professionals often use the template to cut out the horse with a saber saw, taking care to cut away at least 1/4" of the wood on the back side so

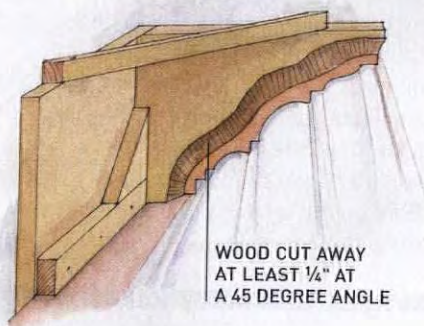
that it won't obstruct the movement of plaster. Once the horse is ready, cut the knife profile out with the shears or saber saw, taking care to replicate the profile perfectly, without bending the metal or forming jagged edges or awkward curves. Use files or rasps to get to any places the shears or saw can't reach. Any flaws in the template will be faithfully reproduced in the plaster.

Check the knife against the moulding or original outline to make sure it still has the correct contour. Burnish the edge with a smoothing tool like a round file to remove any last bumps or burrs.

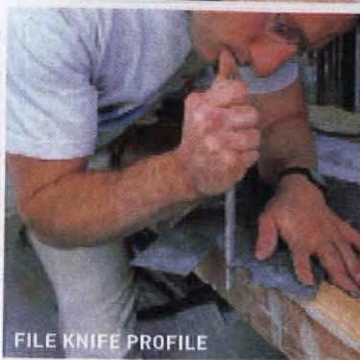


**ABOVE** The mould is the running position, with the clean edge of the knife fitted to the horse. The slipper has a grooved edge where it meets the bench to help hold the tool in place.

**BELOW** The wood on the back side of the knife is cut away to help reduce plaster buildup.



CUT OUT HORSE

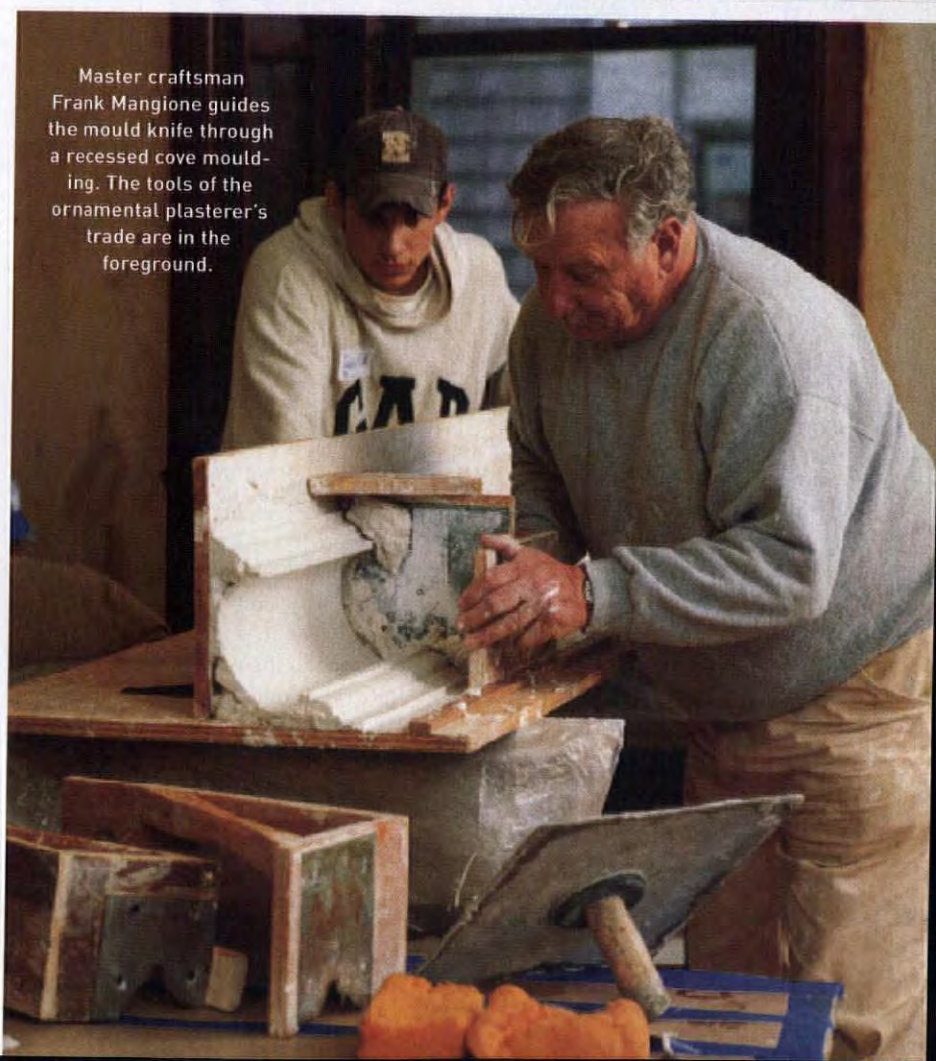


FILE KNIFE PROFILE



BURNISH KNIFE EDGE

Master craftsman Frank Mangione guides the mould knife through a recessed cove moulding. The tools of the ornamental plasterer's trade are in the foreground.





## THE PRO TIP

***It takes practice to mix plaster to the same consistency every time. Make plaster batches until you develop a feel for the work before beginning your project.***

long as the moulding along the bench. To strengthen it and make the finished run easier to handle, lay down some loose fiberglass strands for reinforcement.

Now make the first run. Push the mould along the full length of the line of plaster, slowly but steadily, without stopping. The wet plaster will ooze and roll over itself in front of the knife, while the moulding is beginning to form behind the knife. Keep the mould flat to the surface and against the edge of the table; the tool should slide along without any real effort.

After the first run, remove the mould and clean it of excess plaster, especially around the knife. Move the mould back to the beginning and apply more plaster along the length of the emerging ornament. Run the mould in the same track each time.

Examine the mould after each run to make sure plaster isn't building up on the slipper and the horse, throwing the runs off course. Clean the horse behind the knife, too, to prevent plaster from hardening there. Be on the lookout for small pebbles of hardened plaster; they can get dragged across the surface, which will leave long gouges.

As you continue to build up the moulding, adding fresh



POUR A LINE OF PLASTER



PUSHING THE MOULD

### RUNNING THE MOULDING

To begin, layer plaster in a line that's as long as the intended moulding on the bench. Then pass the mould over the plaster, refreshing with new material as needed. Clean the knife thoroughly after each pass.



PROFILE BEGINS TO FORM

## Mixing plaster

for running ornament is similar to mixing plaster for finish-coat work, except that the ratio of plaster to lime is greater. Figure one part gypsum to one part lime, which yields a harder, finer surface. Since setting times can be as little as 10 minutes with this ratio, add a plaster retarder (specifically formulated for gypsum) to extend working time. It's also helpful to have at least one helper to mix plaster while another person runs the ornament.

Mix the plaster on a square

piece of smooth plywood that measures about 3' x 3'. Dump the prepared lime putty onto the board first, forming it into a ring about 3" high. (A margin trowel is the ideal tool for this.) Leave a blob of putty in the center.

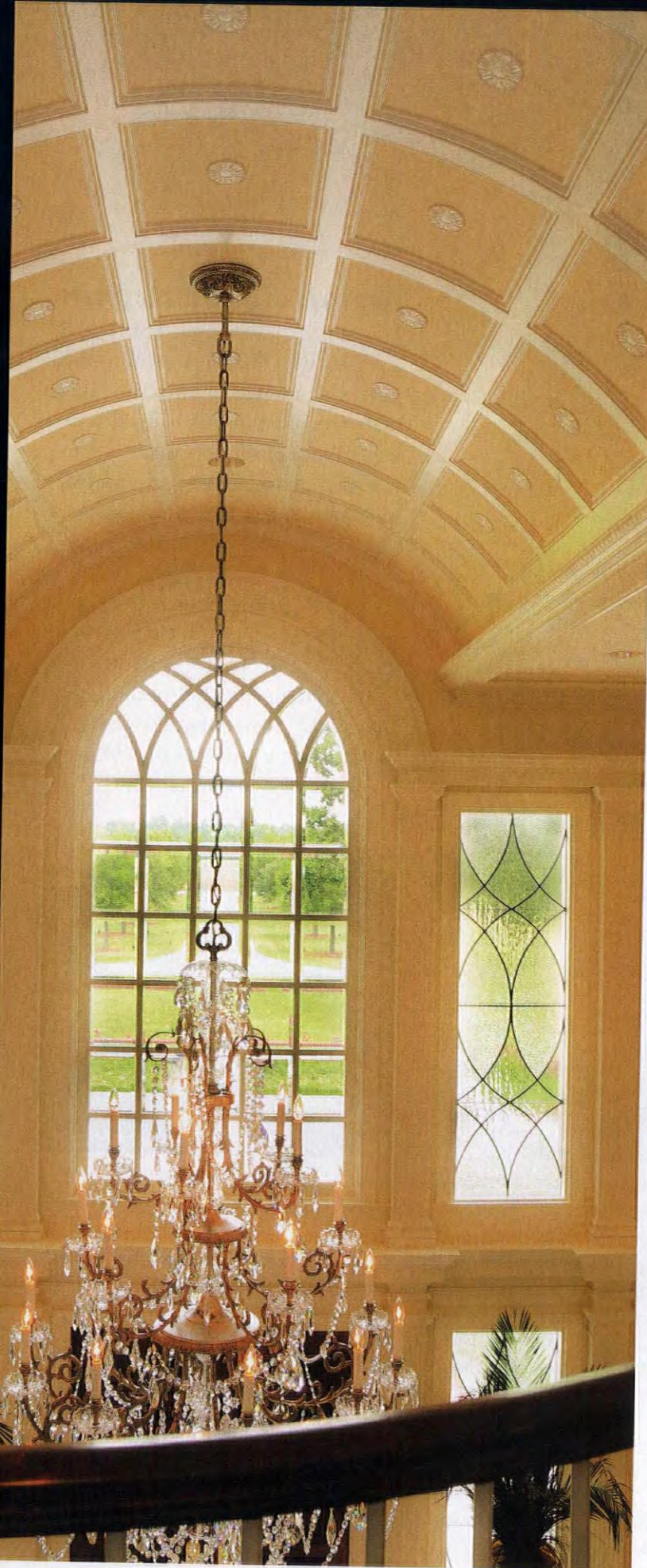
Pour enough water into the ring to dissolve a similar amount of plaster equal to the putty. Add the retarder to the water and stir carefully until fully dissolved. Adding 1 to 2 teaspoons of retarder to a batch of plaster will typically allow a working time of 20 to 30 minutes.

Slowly sprinkle in the gypsum. Let it stand in the water for a few

minutes, soaking it up, before mixing it with the lime putty.

Spread the blob of putty through the plaster using the margin trowel. Then work in the lime from the outer ring, folding it into the center. As you continue to mix, the plaster should gradually change from soupy to a mixture thick enough to trowel on (the mix should just cling to the face of the trowel without sliding off). Transfer small batches to a plaster hod and then work quickly. Once the plaster starts to set, it's useless: adding water won't stop the setting process and it will weaken the plaster.





## PLASTER ALTERNATIVES

Plaster, ornamental woodcarving, and synthetic materials such as "compo," or composition ornament, have been used decoratively and sometimes interchangeably for centuries.

Compo, for example, was especially favored for ornamenting otherwise solid wood pieces like mantels and built-ins between about 1880 and 1920. A centuries-old alternative to plaster, carved wood, or stone, compo is made of oil, resin, chalk or whiting, and animal glue. As a thermoplastic material, it's ideal for creating sculptural relief when applied to surfaces. Soft and flexible when pressed into moulds, it becomes firm and flexible as it cools, and is hard and rigid when fully dry. A pliable version is today's proprietary product Petitsin, made by J.P. Weaver Co. Compo usually must be painted, stained, or gilded to look correct in an architectural setting.

A more recent development is the emergence of polyurethane ornament. The best, capable of taking fine architectural detail, are made of high density materials with a closed cell structure. Lightweight and low maintenance, they are easy to install and can be cut, carved, painted, stained, or faux finished. Like plaster and composition ornament, however, they're only as good as the mould used to make them.

**LEFT** A barrel-vaulted ceiling that resembles fine plasterwork is actually trimmed with a mixture of wood mouldings and composition or wood rosettes, all from Driwood Mouldings. **ABOVE** A ceiling looks like it is lavished with plaster, but the enrichments are actually J.P. Weaver's Petitsin, a form of composition ornament.





**A New Medallion** You can order a ceiling medallion directly from specialty suppliers in plaster or other mediums—or cast one yourself! Here's how the pros make custom pieces and close reproductions.

**Step 1** A plaster medallion begins as powdered gypsum and water mixed to the right consistency, which is then poured into the waiting mould.

**Step 2** The artisan uses his hands to smooth and work plaster into every crevice in the mould. Then a layer of fine sisal or fiberglass fiber goes over it for reinforcement.

**Step 3** Another layer of plaster is smoothed over the fiber layer to completely encase it. As the plaster sets, the surface is smoothed with a tool called a busk.

**Step 4** Once the plaster is fully set and cured, it is carefully removed from the mould.

**Step 5** The medallion is ready to install.



## Installing the Repair

Mouldings can be applied directly to a plaster wall or ceiling using a slip of pure gypsum plaster (or plaster mixed with a bit of white glue), mixed to the consistency of sour cream.

Make sure the plaster surface is free of paint or other surface applications, then scarify the surface where the new repair will go with a nail or other sharp tool. Then score the back of the moulding along its full length with the same tool. Finally, wet both the wall or ceiling and the back of the moulding thoroughly. Otherwise, the plaster wall will suck the moisture out of the slip before it has time to bond.



FILL REMAINING POCKS



FINISH WITH WATERY MIX

## FINISHING THE MOULDING

Finish work moves quickly. Have an assistant check for voids; add a watery mix as the moulding begins to set, and once it's ready, cut it away carefully and allow to fully dry.



GENTLY REMOVE MOULDING

plaster each time, the profile will begin to form right before your eyes. The repeated action of the mould accelerates the setting up of the plaster. Since plaster swells slightly as it sets, run the mould over the profile every few minutes to ensure that the piece doesn't get too big for the mould to pass over it.

Once about 80 percent of the profile is formed, gaps or pocks may appear in the surface. Dab plaster directly onto them and run over those areas with the mould. As the unfilled areas get smaller, have your assistant mix up a new, somewhat watery batch of plaster. Brush this onto the surface to remove any bubbles or irregularities.

To finish, brush on a very watery mix of plaster. At this point, the knife should be scraping off a fine powder as it passes along

the nearly complete moulding. Keep the surface wet at this stage by splattering it with water from a brush. Adding water allows the last scrapings to form a milky film that fills in all the minute holes and gives the surface a polished, shiny appearance.

When finished, let the moulding rest for about 30 minutes. Plaster heats as it cures; allow it to get hot and cool down. To remove it from the bench, first trim away any plaster edges left around the moulding. Using a thin blade under the edges, gently pry the moulding up. Be careful not to stress the moulding—it won't be fully cured for several hours—and avoid chipping or gouging the surface. Cut off the ragged ends and if necessary, cut the piece into convenient lengths for later installation. Let the pieces stand on a drying rack overnight to dry completely.



## VICTORIAN LIGHTING WORKS



P.O. BOX 469  
251 S. PENNSYLVANIA AVE  
CENTRE HALL, PA 16828  
814-364-9577  
**VLWORKS.COM**

charlesprogers.com



**CHARLES P. ROGERS BEDS - EST. 1855**  
CLASSIC IRON, BRASS, LEATHER & WOOD BEDS.  
OH-SO COMFORTABLE MATTRESSES & LINENS.  
COLLECTION & SALE PRICES ONLINE AT:  
**charlesprogers.com • 1-866-845-5946**

## Clogged Filter? No Suction? Hard to Empty? Dusty Mess?

Not Anymore!



Here's the  
Solution!

Pays for itself  
in filter savings  
alone!

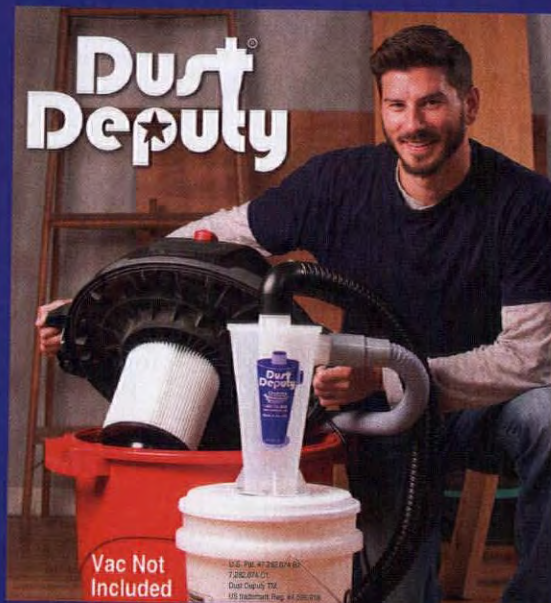
Captures 99% of  
the waste **BEFORE**  
it reaches your wet /  
dry vacuum.



Dust Collection  
Since 1993.

**www.oneida-air.com**

**Dust  
Deputy**

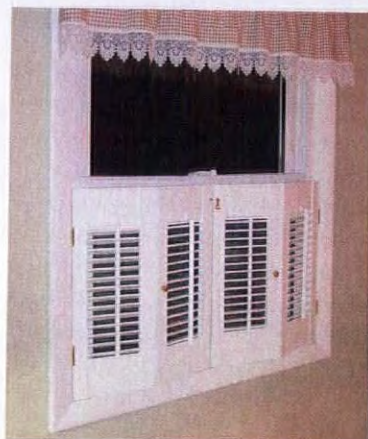


Vac Not  
Included

Dust Deputy Now available at these fine retailers.



Made in  
the USA



**Hard-to-find**  
traditional moveable louvers

Perfect for bifold cafe style!

Free Quotes - Any size & color  
Also colonial panels & plantation style

Family Owned  
Since 1986

Made  
in USA  
Shipped Nationwide

Call (203) 245-2608  
**www.shuttercraft.com**





# Easy Fixes for your Furniture

Revive vintage furniture with hard wax, make unsightly chips in veneered pieces vanish, or update an armchair's upholstery.

By Lynn Elliott

**HOUR**

## Apply a Wax Finish

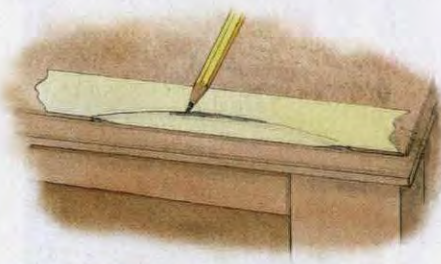
Luster is restored and protection gained with the use of a wax or finishing paste, which comes clear or matched to the wood color. Wax provides a beautiful finish and minimizes scratches; although it is a thin renewable surface, it doesn't provide the protection of shellac or varnish. Before waxing, use a clean, barely damp cloth on the piece. Wearing gloves, scoop out a small amount of the paste wax into the center of a clean white cloth. Gather the cloth ends to create a ball, then knead the wax to soften it and work it into the fabric. Rub the ball in a circular motion on one section of the piece. Next, wipe along the grain, leaving an even, thin layer of wax. Allow it to dry for five to 10 minutes—not too long, or the wax will harden. Buff off excess wax with a clean cloth to create a sheen. Repeat the process two or three times if desired.



**DAY**

## Patch Missing Veneer

Delicate wood veneer on furniture is prone to chipping. Make the blemish on your piece fade away in just a few steps.



### STEP 1

Buy replacement veneer that matches the wood. (See sources online.) Comparing the veneer to the chipped furniture, choose a section of veneer that most closely matches. With tape, mark off the area to be repaired. Assess the chip: Jagged edges make it hard to create a template, so consider gently cutting off uneven edges with a utility knife to create straight lines. Place a piece of painter's tape over the chip, and rub along the edge of the chip with a pencil to create a template.



### STEP 2

Remove the tape template and transfer it to the section of veneer, aligning it on the area you marked. (Remove any tape marks that interfere with the template.) On a worktable, cut the veneer with a utility knife along the lines of the template to create the patch. Then remove the template. Handle the patch with care, as veneer is easily damaged.



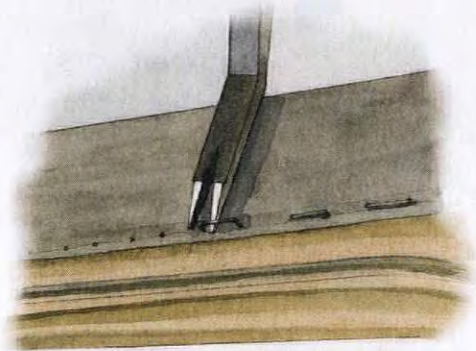
### STEP 3

Scrape any old glue from the chipped area, taking care not to damage surrounding veneer. Place the patch, securing it along one edge with painter's tape. Gently flip the patch up and apply carpenter's glue or contact cement to the exposed wood base. Press the patch into place, and clamp the area or weigh it down. Let dry. Lightly sand the area around the patch with fine-grit paper and refinish as needed.



## Reupholster a Chair

In many cases, you can tackle the worn-out upholstery yourself. Bring an old chair back to life—and make it comfy—with new fabric and some careful work. (There are plenty of video tutorials online, too.)

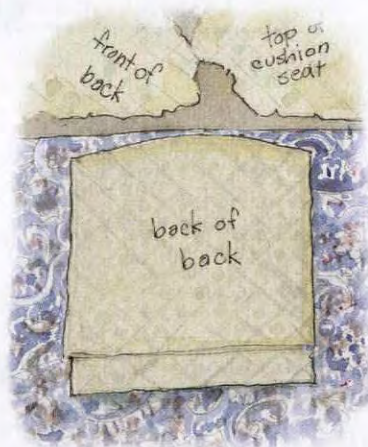


### STEP 1

Study how the chair is put together, then remove staples and fasteners with a staple remover or a regulator, an upholstery tool for prying off fasteners. Have a pail or shop vac handy to gather staples. As pieces of fabric come off, label them: "upper right arm," "outside wing," "front of back." Make a list of the order in which the panels come off. Don't cut into the old fabric because these panels are templates for new fabric. Padding may remain in place unless it prevents access to part of the frame where fabric will be attached. Gently remove padding and keep it as well as any cardboard or other parts.

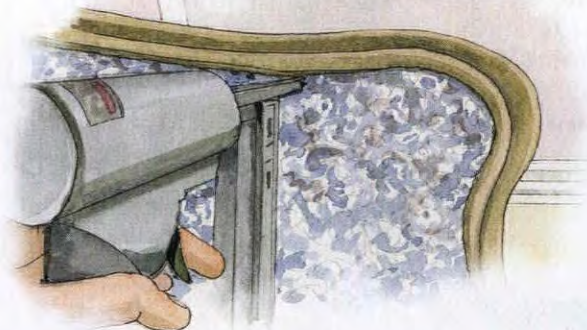
With scissors, trim any excess fabric close to the staple line. If you didn't use piping, apply gimp, cording, or fringe cording (bottom of chair only) along exposed edges. Use a hot-glue gun, working in short sections of about 8". Cut trim edges to meet tightly and glue in place. Trim stray threads and secure loose pieces.

### STEP 2



### STEP 3

Using your list, put panels back in reverse order. Replace padding or cardboard as you work. Secure one side of a panel with a tack hammer or a pneumatic upholstery staple gun. Then attach the other side. Check fabric alignment and adjust as needed. Continue securing panel in place, pulling fabric taut as you go. Staples/fasteners are placed anywhere from 1/4" to 1/2" apart. Follow the guidelines of the old holes.



### STEP 2

With scissors, trim any excess fabric close to the staple line. If you didn't use piping, apply gimp, cording, or fringe cording (bottom of chair only) along exposed edges. Use a hot-glue gun, working in short sections of about 8". Cut trim edges to meet tightly and glue in place. Trim stray threads and secure loose pieces.







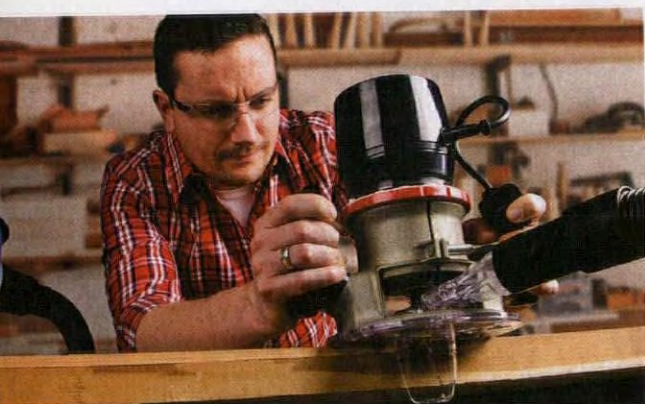
# Roundup for Fall

These well-designed items help you prepare for winter—or gear up for indoor projects.



## ^ A DEEPER CUT

Made in England, the Eclipse coping saw can cut wood or plaster up to 4 5/8" deep. Capable of very tight radius cuts, the 6 1/2" high-tension steel blade has 10 teeth per inch. \$13.99. Highland Woodworking, (800) 241-6748, [highlandwoodworking.com](http://highlandwoodworking.com)



## ^ DONE AND DUSTED

The Universal dust-free router hood fits many fixed-base and plunge routers, vacuuming up waste while you work. The 7"-diameter clear polycarbonate tool comes with a swiveling hose connection with quick-release lock. \$29.99. Oneida Air Systems, (800) 732-4065, [oneida-air.com](http://oneida-air.com)



## ^ CUTTING IN CIRCLES

Cut precise curves and angles in wood, steel, and other materials with the Craftsman 2 in 1 orbital scrolling sabre saw. Equipped with a 6-amp motor, it comes with an on-demand LaserTrac guide. \$79.99. Sears, (800) 349-4358, [sears.com](http://sears.com)



## SLEEK WARMTH >

The cherry-framed Heritage Omnipanel hydronic towel warmer doubles as a radiator, so it's perfect for a mudroom. Choose from 2,000 BTU or 4,400 BTU models. \$1,029 and up. Runtal North America, (800) 526-2621, [runtalnorthamerica.com](http://runtalnorthamerica.com)

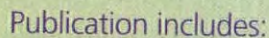
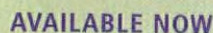


## < BETTER THAN NEW

Replace broken or missing radiators with completely refurbished hot water, steam, or electric units in period styles, or have your own rads repaired. Pricing is based on height, model, and heat capacity. Replace: \$505 and up. Repair: \$385 and up. Ecorad, (855) 632-6723, [ecorad.ca](http://ecorad.ca)



**Order the latest edition of  
*Design Center Sourcebook*  
direct from the publisher!**



Hard-to-find,  
high quality,  
period-inspired  
products for all styles

967 handpicked listings

### Additional companies & contact information

*To order your copy and have it delivered to your door, visit*

[oldhouseonline.com/](http://oldhouseonline.com/)

**buy-dcsb**

or call (800) 234-3797

\$9.99 (U.S.) + shipping

**HOUSE OF ANTIQUE HARDWARE**  
*Period Perfect for Your Vintage Home*



[www.HouseofAntiqueHardware.com](http://www.HouseofAntiqueHardware.com)

**WON'T SHRINK** *From Any Job*



Use Durham's Rock Hard Water Putty to fill cracks and holes, rebuild missing material, and mold new objects. It permanently adheres in wood, plaster, and tile without shrinking. You can then saw, chisel, sand, polish, and color it.

The go-to solution of demanding craftsmen for more than 75 years. Available from hardware, lumber, building material, and paint dealers everywhere. [waterputty.com](http://waterputty.com)

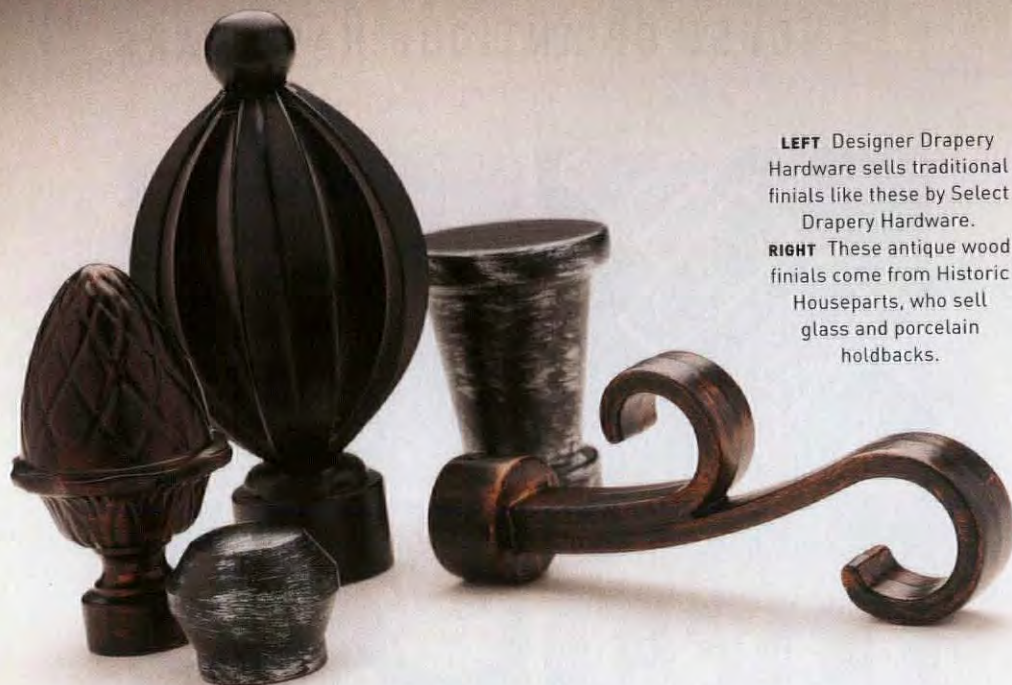
**Donald Durham Co.**  
Box 804-HJ, Des Moines, IA 50304



**Like us,**







**LEFT** Designer Drapery Hardware sells traditional finials like these by Select Drapery Hardware.

**RIGHT** These antique wood finials come from Historic Houseparts, who sell glass and porcelain holdbacks.



## Hanging Drapery

Window dressings complete a room. Here's a tutorial on drapery hardware ca. 1860 to 1910—a period that saw lavish treatments but also a return to simple rod-and-ring drapery. **By Brian D. Coleman**



Window drapery in the mid to late 19th century was heavy and layered. A lace or sheer “glass curtain” was hung as a first layer, overlaid with long drapery panels (often puddling on the floor, suggesting that money was no object), and crowned with a valance, swag, or lambrequin, a pelmet or cornice. The treatments were further trimmed with gilded, carved, or glass holdbacks, tasseled tiebacks, crests—and hung from fancy rods with end finials. Proper window treatments often cost more than the room's furnishings.

“The basics are the same today as they were in the early 1900s,” says Nathan Cole

of Designer Drapery Hardware. “Creating the look for a specific period is more about selecting the appropriate style and finish for the hardware, all of which works in similar fashion.” Re-create a period look by choosing overstated elements. Color and finish selection is very important. Basic white, oak, and mahogany probably won't be appropriate. Multitone, faux, and gilded finishes were more widely used and lend elegance. (Look for fancy finishes in Kirsch's Buckingham collection, and at Select Drapery Hardware, and at TMS-Menagerie.)

Both wood and wrought-iron rods

were used and that choice remains today. “The round iron rod and the fluted wood rod were more popular in America than in Europe,” says Whitney Walker of Antique Drapery Rod Co. Today's stock wooden rods range from 1 3/8” to 3” in diameter. To create a Victorian look with wood rods, consider using an overstated pole diameter (2 1/4” or 3”), perhaps fluted, with a two-tone or gilded (or ebonized) finish. Kirsch's Renaissance collection offers faux finishes from bronze to burnished copper to gold.

Rods rest on brackets, which support the weight of the drapery. Brackets may be single, invisibly mounted inside the window frame; or return brackets mounted on the wall—the only option in the 19th century; or ceiling-mounted brackets for treatments that extend close to the ceiling. Rings or “carriers” suspend the fabric from the rod and are [text cont. on page 54]

**Tiebacks & holdbacks** used to hold drapery panels open are fun to choose. The holdback can make its own statement, like jewelry, if its style, finish, or design is different from the rest of the drapery hardware. TMS-Menageries has very nice Victorian-style crests and holdbacks in Vintage Gold and Antique Silver finishes. Antique examples ranged from gilded lilies to multi-color pressed and opalescent glass. A popular Victorian motif was the hand, signifying romance. Today Vintage Hardware & Lighting has a delicate Victorian “hand tieback” in brass.



**LEFT** This pressed-glass holdback in a flower petal design is from Historic Houseparts; many colors are available.



**ABOVE** A decorative rod with a laurel wreath center and anthemion finials is perfect for the Empire room. **BELOW** Metal rods, brackets, rings, and finials come from Antique Drapery Rod, who sell craftsman-made hardware in European styles.



## MODERN COMFORT ORIGINAL CHARM

WINDOW INSERTS THAT INSTALL WITH NO MOUNTING BRACKETS.

*Keep the comfort inside.*

indowwindows.com | 503.822.3805

**ALAMEDA  
SHADE SHOP**

Custom-Made Window Shades

Our specialty is manufacturing authentic Victorian window shades with a variety of materials and styles.

914 Central Avenue | Alameda, CA 94501 | 877-522-0633

[www.shadeshop.com](http://www.shadeshop.com)

**ACRYMAX**

**TIN  
ROOF  
RESTORATION  
SYSTEMS**

1-800-553-0523

[preservationproducts.com](http://preservationproducts.com)





## KNOW-HOW



### HOOKS & RINGS

Curtain hooks slip into the header of pleated drapery panels, then into a small eyelet on each ring; rings move freely along the rod.



**TOP LEFT** Kirsch has a wider selection than what's sold in the hardware store; this is a gilded holdback from their Buckingham line. **LEFT** Kirsch's hefty rod and rings have the Renaissance finish.

**RIGHT** The very traditional pewter-finish metal holdback is also from Kirsch.



**ABOVE** At Waverly in Mississippi, built in 1858, rods are hidden behind short valances, and drapery panels are held open by fabric tiebacks.

## The Traverse Rod

A significant development in drapery hardware and fashion occurred in 1907, when Charles W. Kirsch founded the Kirsch Company. Kirsch's introduction of the adjustable traverse rod revolutionized the window-treatments industry. Kirsch remains a leader in curtain and drapery hardware, with a huge selection and many products readily available.

attached with drapery pins or stitched directly into the header of the fabric. Rings, brackets, and rods should match in style and finish. If you have a wide window, look for "bypass" brackets that let you move the rings past the support bracket to cover the ends of the window yet still allow the drapery to open and close.

When using rings, do not use "alligator" clips. Those belong on more contemporary window treatments; also, Victorian curtains are typically thick and heavy, so clips won't bear the weight.

For wrought-iron rods, Select's Iron Works Collection is a good option: a scaled-up  $1\frac{3}{16}$ " size is available, and uncommon among other manufacturers. Most 19th-century iron rods were finished in black or dark brown, but today the array of suitable finishes includes oil-rubbed bronze, gilded and black bronze, and antique silver. (Kirsch's Iron Gold finish gives an opulent period look.) For proper support, the recommendation is to mount brackets every four linear feet along the rod. Bypass rings or open

"c-rings" may be used if the panels need to move past brackets along the rod.

Rod-end finials are an important finishing touch. Motifs in the 19th century ranged from classical scroll and fret designs to naturalistic flowers, leaves, and acorns. Remember Victorian excess as you choose their size and design. (Be sure the finial will mount to the rod before you buy from separate collections.) Tiebacks, holdbacks, and crests were prominent features; gilded scroll- and leaf-design crests often were used as embellishments,





installed just above a fabric valance. Holdbacks and crests can be used with wood and iron rods, or they can form a stand-alone treatment to create a swag.

After the turn of the century, smaller houses, lower ceilings, and the tenets promulgated by the Arts & Crafts movement contributed to simpler window treatments. Half-length "café curtains," unembellished panels, and single-layer treatments, perhaps with embroidery or stenciling, were common. A single panel could be hung with brass rings on a 1/4"-diameter metal rod. Plain linen tabs sometimes were used instead of rings to hang the fabric on the rod. "The basic black iron rod in a simple twist, as well as the rope-twist wood rod, were popular for English Tudor Revival homes," says Walker.

FOR RESOURCES, SEE PAGE 87.

UNIVERSAL  
**DUST FREE ROUTER HOOD**

**Your life just got easier.**

"I can't believe there's no dust!"

Routers, hoses and vacuums not included.

**Fits almost any portable router.**

U.S. Patent Pending

- Easy to install and built to last.
- No more dusty mess!

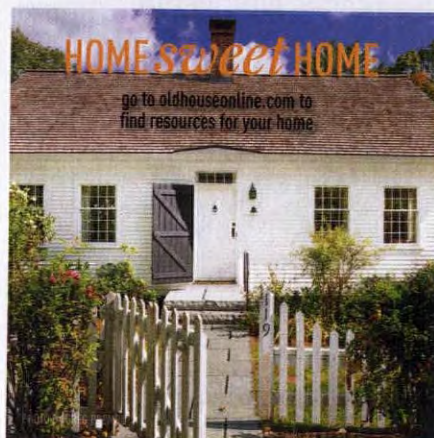
For a complete list of compatible routers and to see the unit in action, visit: [routerhood.com](http://routerhood.com)

May be too large for some trim routers

PLUNGE      FIXED-BASE      TRIM

**Oneida Air Systems**

Dust Collection Since 1993      **1.800.732.4065**      [www.oneida-air.com](http://www.oneida-air.com)



**Have The Best Of Both Worlds!**

Installed      To be Installed

**Save Your Historic Windows with High-Tech Interior Storm Windows**

10 Minute Install / 10 Seconds In / 10 Seconds Out

**Innerglass®** Window Systems, LLC  
The Compression-Fit Advantage

[stormwindows.com](http://stormwindows.com) • 800.743.6207





“For the past year, we’ve resorted to holding up the sink stopper with a green plastic clothespin.”



The sink in my vintage bathroom is original, but the faucet and taps are new, designed to look old. The stopper refuses to stay in place, which means the sink won’t hold water. For the past year we’ve had to keep it in place using a plastic clothespin. We spent a lot of money on this faucet set, and are so disappointed! —*Emily Johnson*

## THE FIX

The fault lies not in your gleaming faucet set, but in the workings out of sight. Since you have access to the back and underside of the sink, use a flashlight and look for a vertical metal rod projecting below the back of the basin—the working part of the stopper handle. It should be attached to a horizontal pivot rod with a spring clip. The pivot rod runs through the sink’s drainpipe, where it’s connected by a retaining nut that keeps the joint watertight. The pivot rod connects to the bottom of the stopper inside the drainpipe. Together, the handle and pivot rod move up and down like a seesaw whenever you push on the stopper.

If the stopper won’t stay in place, the solution could be as simple as adjusting the stopper level. (The plumber may have not checked the adjustment.) Underneath the sink, locate the point at which the rear end of the horizontal pivot rod attaches to the vertical stopper handle. There should be a flat metal bar with several holes in it. This is called a clevis.

To make the stopper rise higher when open, squeeze the bendable clip holding the pivot rod to the clevis, then slip out the pivot rod and move it down a hole or two on the clevis. To make the stopper close more tightly, move the pivot rod up a hole or two. If there’s no clevis, simply loosen the fitting or clamp joining the rods and move the pivot rod up or down on the handle rod as needed.

Or maybe the stopper is the problem. To replace damaged parts, remove the retaining nut at the back of the drain. Then pull the pivot rod out to release the stopper. If the rubber gasket around the bottom of the plug is worn or cracked, replace it or the entire stopper. Take it to a good hardware store and buy a comparable product.



## Share Your Story!

What have you, your spouse, pet, contractor, previous owner (you get the picture) screwed up? Email us at [lviator@aimmedia.com](mailto:lviator@aimmedia.com).





Swipe  
Tap  
Scroll  
Share  
Like



OLDHOUSEJOURNAL



@OLDHOUSEJOURNAL



@OLDHOUSEJOURNAL



OLDHOUSEONLINE



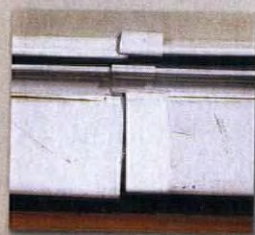
OLDHOUSEJOURNAL



## "Metford" Frieze

It will always feel like summer with our new Metford Frieze crowning your room. This playful and elegant border is adapted from an 1880s document we discovered in the British Archives. Shown here in *Eucalyptus*. Samples available at [www.bradbury.com](http://www.bradbury.com).

**Bradbury & Bradbury**  
ART WALLPAPERS



## Ugly Heaters?



## Upgrade to OverBoards!

OverBoards are high-quality classic upgrades for radiant baseboards. Foundry-crafted of solid cast aluminum, OverBoards install easily over your existing baseboards, and complement your home's classic architectural details.

**OverBoards**  
Classic Upgrades for Baseboard Heat

Call 1-877-466-8372 or visit us at [www.Go-OverBoard.com](http://www.Go-OverBoard.com)





## SALVAGE IT



The finished coat rack has salvaged hooks and new bracket feet made from barn wood.

# Coat Rack from a Porch Post

A designer gets furniture out of a barn cleanout. **By Brian D. Coleman**



Architectural designer Lisa Docter grew up making things from scraps, whether a “fort” in the northwoods of Michigan or furniture for her doll house. When she bought a former dairy farm in Wisconsin to open a farm-to-fork restaurant, she rummaged through the property’s old barns for furnishings. Coming upon original porch posts in a dusty corner, she had an idea: With a strong base added and a few heavy-duty coat hooks, each could become a coat rack for customers’ winter gear.

### THE COST

OLD PORCH POST	\$50
WOOD PLANK	\$20
WOOD SCREWS	\$20
FURNITURE GLIDES	\$5
WOOD FINIAL	\$10
IRON SWINGING HOOKS (2)	\$40
ORANGE OIL	\$10
STEEL WOOL	\$5

**TOTAL \$160**

## repair & reuse

### 1. CLEANUP

Detergent and a stiff brush cleaned off dirt and raccoon mess; then posts were sanded with 00 steel wool, leaving finish and patina intact. The found posts had rotted top and bottom, so they were cut down to 6', the perfect height. Lisa found a wood finial for the top, attaching it with a dowel joint and wood glue.

### 2. BRACKET FEET

Templates for bracket feet (12"x14") were drawn on cardboard. Feet were cut with a scroll saw from 1 3/4"-thick barn planks. (Cast-iron brackets could be used instead.) Exposed edges were shaped and finished with an ogee router bit. Feet were glued and screwed (through pilot holes) to the post with 2 1/2" screws.

Pine bases slightly wider than the brackets (1 1/4" x 2 1/4") add stability. The extra width forms an aesthetically pleasing reveal. A double-length base was attached to two opposing brackets (secured with dado or groove cuts), then glued and screwed into the post. Two shorter bases were similarly attached. Countersunk screws avoid scratching the floor. Furniture glides or sliders added to the outside ends of the bases level the assembly and avoid scratches. Borrowing a Japanese woodworking method to age new wood, Lisa slightly scorched it with a blowtorch.

### 3. FINISHED WITH HOOKS

The pair of iron swing-out coat hooks came from a salvage store. They are attached with 1 1/2" Phillips-head wood screws. Orange-oil finish blended components and added a slight sheen.



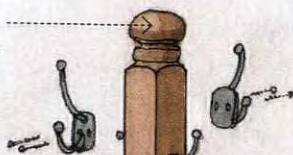


**ABOVE** Cast-off porch and stair parts are common at salvage yards—if not in your old barn.

## leggy variant

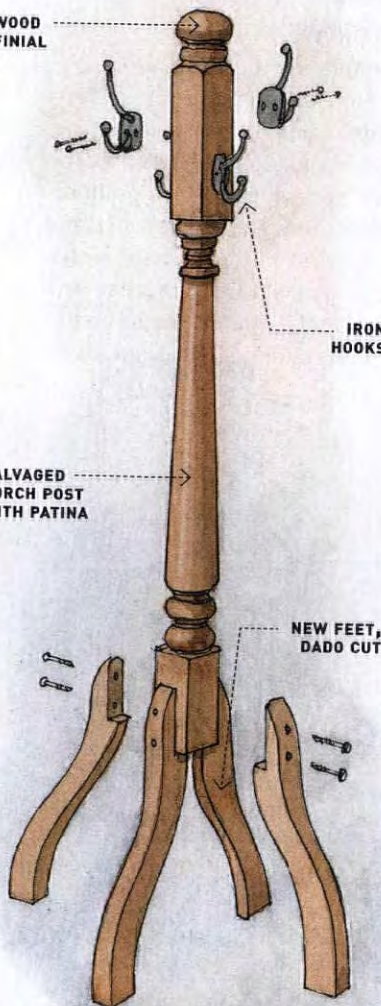
Floating ogee legs used with a shorter post are a variant on the solid base. Porch columns or posts, even a stair newel, may be adapted for the project, as long as the coat rack is about 72" tall.

WOOD  
FINIAL



IRON  
HOOKS

SALVAGED  
PORCH POST  
WITH PATINA



MORE AT LISA'S WEBSITE:  
livesmallthinkbigbehappy.com

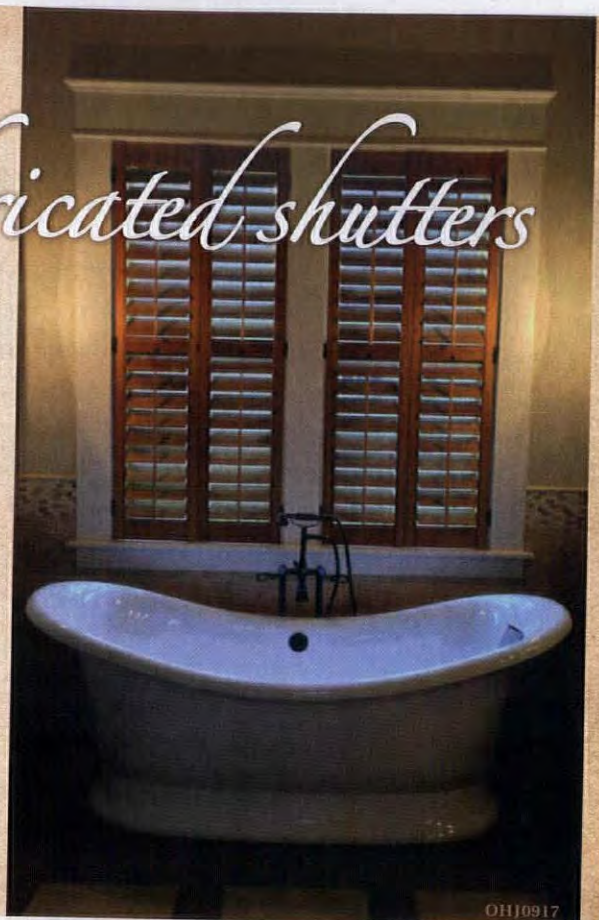
Show off your  
windows with  
high quality  
custom

# fabricated shutters

Americana  
offers the entire  
DeVenco line of high  
quality, custom  
manufactured window  
coverings, including  
Plantation shutters,  
Colonial Wooden blinds,  
Victorian and  
Raised-Panel shutters.



800.269.5697  
www.shutterblinds.com  
to order a free brochure



NEW

HOWARD



Make Your Own  
Chalk-Style Paint

# CHALK-TIQUE®



## POWDER ADDITIVE FOR PAINT

- Turns any latex or water-based paint into chalk-style paint
- Gives paint a thick, creamy texture that adheres to any surface, covers easily, and allows for minimal prep-work
- Mixes with any color paint, for unlimited possibilities
- Special formula won't change the shelf life of the paint
- Chalk-style paint is easily distressed and/or waxed for an aged look
- Adds life to furniture and antiques that are beyond restoring
- Use chalk-style paint on wood, glass, ceramic, metal, fabric, etc.

## DARK PASTE WAX LIGHT PASTE WAX

- The perfect follow-up to any chalk-style painted surface
- Dark wax shadows details and creates an antique look
- Light wax seals and protects, leaving a soft luster and rich glow
- Prolongs the life of all chalk-style painted surfaces with carnauba wax and beeswax



Call Us Toll-Free (800) 266-9545  
Visit [www.HowardProducts.com](http://www.HowardProducts.com)  
To Find a Retailer in Your Area

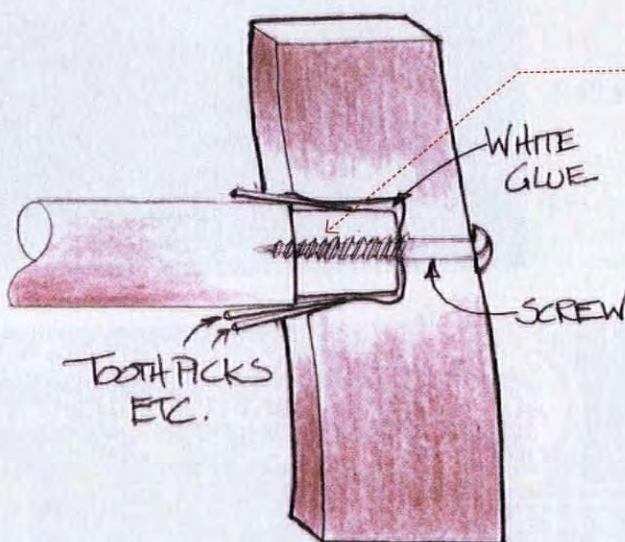






# Securing Loose Stretchers

It's very common for the joinery of chair stretchers (aka "rungs") to loosen with age. When it happens, the load that the joint used to carry is added to the stress on remaining joints. The problem cascades, with additional joints loosening, until finally stretchers start to work free or even fall out. The undercarriage of a chair has horizontal stretchers, either cylindrical (turned on a lathe) or rectangular (stick-like) in cross section. The stretchers narrow at each end, forming tenons that fit into mortises in the legs of the chair. The shoulders on each tenon restrict the movement of the legs inward, and the glue in the joint prevents outward movement. Over time, the glue bond fails and the tenon begins to slide out. Without remedial attention, the repeated sliding will enlarge the mortise, and the tenon won't hold. **By Ray Tschoepe**



## WRONG WAY

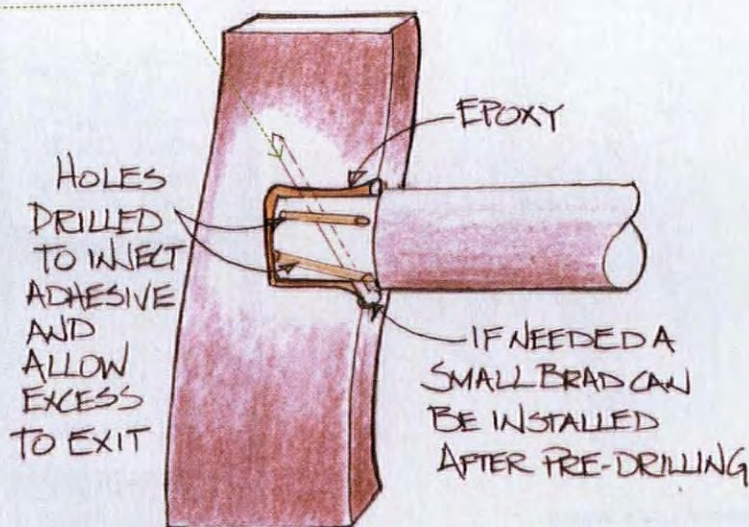
### DON'T USE SCREWS

Avoid the temptation to simply add a screw from the outside of the chair leg into the tenon. Aside from the visible, modern fastener being a serious breach of aesthetics, screwing into end-grain (at the tenon) will cause more wood loss and loosening. Because of the stresses a chair suffers, stuffing an enlarged mortise with toothpicks or shims, then using ordinary wood glue, makes for a short-lived repair.

## RIGHT WAY

### GLUE IT UP

Address a loose joint early. If the chair is not valuable and the mortise-and-tenon joint has loosened, use an epoxy, for two reasons: clamping won't be required, and an epoxy adhesive can bridge gaps up to  $\frac{1}{8}$ ". If the stretcher won't pull completely free of the mortise, drill small holes ( $\frac{1}{16}$ " to  $\frac{1}{8}$ "") along the tenon from the shoulder of the joint to the interior of the mortise. With tape, mask the edges of the stretcher and the mortise (in the leg). Inject the adhesive into the holes or work it into the joint. For particularly loose joints, you may insert a small finishing nail diagonally across the joint, after pre-drilling. (Note: If the chair is valuable, it should not be glued with epoxy, considered an irreversible repair. Consult a furniture conservator.)





## Crafted Right... Here in Vermont.

Glenn Bowman,  
owner and craftsman

Crafting quality soapstone sinks  
and countertops for 160 years.

Soapstone is all we do.  
WE FABRICATE AND  
INSTALL MORE  
SOAPSTONE THAN  
ANYONE... PERIOD. We  
build on-site for a perfect fit  
every time. Trust us for value,  
experience and the quality  
that comes from generations  
of Vermont craftsmanship.



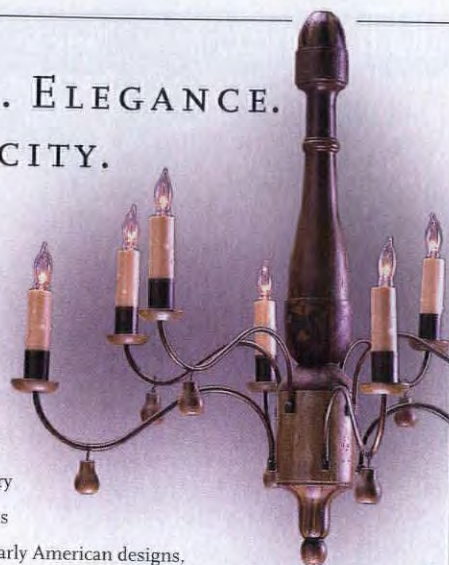
Custom crafted sinks  
and countertops. Your  
design or ours.

 **Vermont Soapstone Co.**  
Quality from the Quarry to Your Home Since 1856

VermontSoapstone.com 855-868-5702

## BEAUTY. ELEGANCE. SIMPLICITY.

Grace your home  
with the timeless  
sophistication of 18th  
and Early 19th Century  
lighting. The country's  
largest collection of Early American designs,  
reproduced entirely by hand from original fixtures  
in museums such as *Historic Deerfield* and *Old Sturbridge Village*.  
**PERIOD LIGHTING** chandeliers, sconces and lanterns will add  
a quiet beauty to your home and surroundings.



**PERIOD LIGHTING FIXTURES INC.**

ARTISANS SINCE 1974 PERIODLIGHTING.COM 800 828-6990  
167 RIVER ROAD DEPT 41032 CLARKSBURG, MA 01247



PREMIUM QUALITY REGISTERS & GRILLES

— AMERICAN CRAFTSMANSHIP —  
**Get the Finishing Touch  
People Notice**

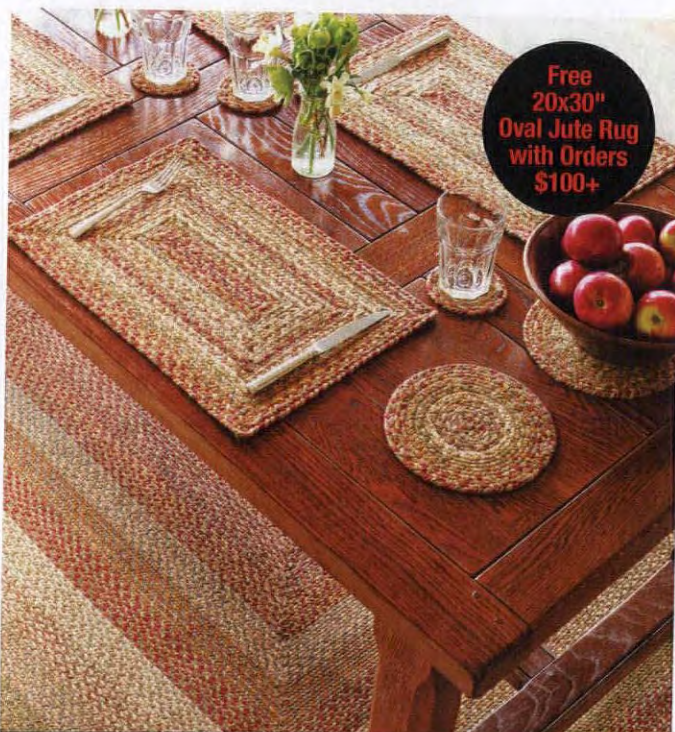
Check out our newest products at  
**ReggioRegister.com**



**Solid Brass • Cast Iron • Aluminum • Wood**

— LIFETIME GUARANTEE —

ReggioRegister.com | 844.834.9949



**Free  
20x30"  
Oval Jute Rug  
with Orders  
\$100+**

**Durable • Handcrafted • Washable**

**Homespice**  
CLASSIC AMERICAN DECOR

sales@homespicedecor.com www.homespice.com 770-934-4224



DISCOVER THE CHARM of Early New England Homes



Our 1750s style cape home building system boasts beautiful timbered ceilings, a center chimney, wide board floors and custom, handmade features in the convenience and efficiency of a new home.

Our model is open:  
Mon-Fri 8-4:30, Sat 9-3

**Early New England  
HOMES®**  
by country carpenters, inc.

Bolton, CT / 860.643.1148  
EarlyNewEnglandHomes.com

MADE IN USA | SOLID COPPER & BRASS | HANDMADE  
FREE SHIPPING | CUSTOM ORDERS WELCOME



NEW HAVEN  
WALL SCONCE

**LANTERNLAND**  
ARTISAN COPPER LANTERNS & OUTDOOR LIGHTING

**LANERNLAND.COM**  
855 454 5200  
INFO@LANERNLAND.COM

## NU-WAL® RESTORATION SYSTEM

MAKE WALLS & CEILINGS LOOK LIKE NEW AGAIN!

TIME TESTED  
FOR OVER  
**35 YEARS**

LEAD ENCAPSULATION  
ONE DAY APPLICATION  
NO TRIM REMOVAL  
NO PLASTER REMOVAL

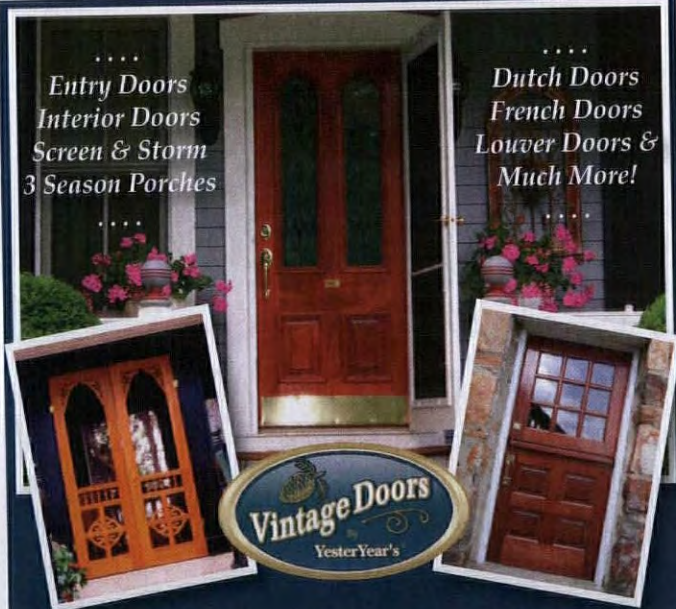
NU-WAL.COM  
BOONE, IA  
800-247-3932

SPECIFICATION CHEMICALS, INC.



....  
Entry Doors  
Interior Doors  
Screen & Storm  
3 Season Porches  
....

....  
Dutch Doors  
French Doors  
Louver Doors &  
Much More!  
....



**HANDCRAFTED SOLID WOOD DOORS**  
Add Beauty & Value To Your Entire Home!

*"Just Like The Olden Days..."*

Shop Online | Request a Quote | Call for Catalog  
**VintageDoors.com ~ 1 (800) 787-2001**



# DESIGN



## the powder room

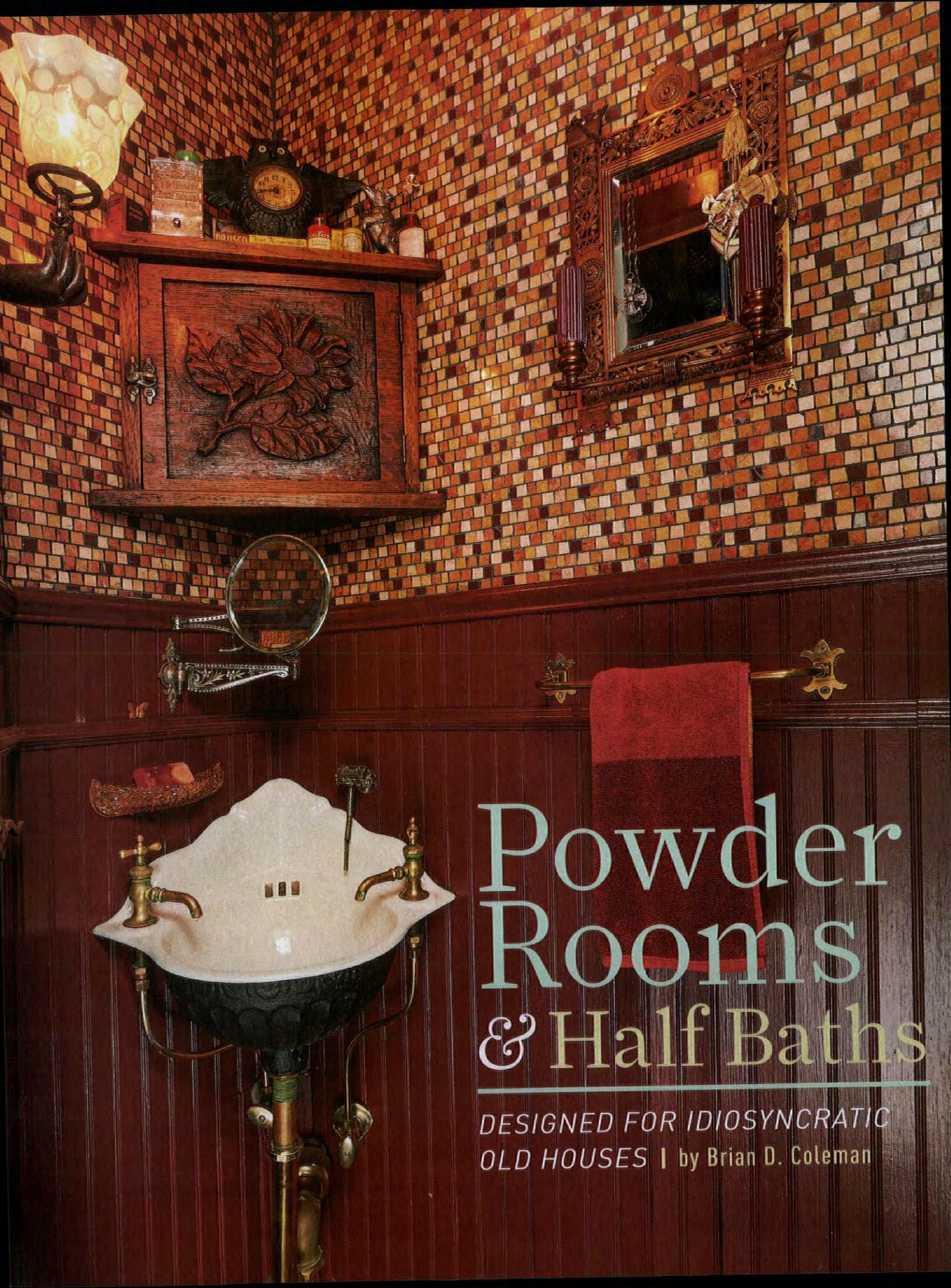
*Half bathrooms  
can be small and  
hard to design, but  
what opportunity!*

PAGE 64



72 VINTAGE VISION | 74 KITCHENS + BATHS | 76 FAVORITE THINGS | 78 THEY STILL MAKE | 88 REMUDDLING





# Powder Rooms & Half Baths

DESIGNED FOR IDIOSYNCRATIC  
OLD HOUSES | by Brian D. Coleman





**LEFT** A narrow powder room with toilet opposite sink: so why not fill the space with a custom vanity offering storage?

**BELOW** Grasscloth-covered walls and bedroom-worthy furnishings make a half-bath more a room than a utility space.

**OPPOSITE** Nowhere is it more fun to go over the top than in a space-challenged half bath. Here, custom mosaics and Victorian wood wainscot join a salvaged period corner sink and gaslight-era "hand" sconces.

The powder room of the 18th century was a discreet closet where one went to powder one's wig. By Victorian times, "going to the powder room" or taking leave to "powder [my] nose" had become euphemisms for using the toilet and lavatory. The modern powder room is most often a small half-bath, with just sink and toilet but no tub or shower. It's often near the entry to be convenient to visitors. By the beginning of the 20th century, householders had begun adding more elaborate wall treatments and other upgrades to impress guests.







### INDULGE A VISION

Rescue a butler's sink found in the pantry, use period tile in a new way with a space-saving corner sink, hark back to Victorian barbershops, create a textural Arts & Crafts Revival room moody with color and copper . . . why not?





Design guidelines suggest 60 square feet, but most half baths in old houses are considerably smaller. Common sense holds 25 square feet to be a comfortable minimum.

**The half bath today** may be utilitarian—near the garden or laundry and able to handle yard dirt—or it may be a jewel box of fancy treatments kept affordable by the room's diminutive size. The powder room is a good place to make a decorating statement or keep to a period scheme.

If you are adding a new half bath or moving fixtures or doorways, consider the view into the room. The door is usually open, and no one wants to see the toilet from a public room. Try to make it a pretty vignette: a view toward a decorated or hardwood vanity, wallpaper, or a gorgeous framed mirror. Not the john.

If the powder room opens from a main space, think about sound transfer. Having a small "vestibule" on either side of the door, building a vanity between the main room and the toilet, even adding extra insulation or a sound barrier in the common wall are good ideas.

Have fun with the mirror, always necessary in a wash-up room. Consider its shape, size, and frame material: anything from wood or metal to tile. Typical hanging height is with its mid-point about 66" from the floor, considered eye level. Furniture makers and decorating suppliers sell many types of mirrors and frames, but for a true period touch consider an antique mirror—or an antique picture frame with a new mirror.

Instead of a recessed medicine chest, install shelving between studs in the wall cavity, and hinge the mirror over the opening. For even lighting that flatters, add wall sconces on each side of the mirror, ideally 36" apart and 66" from the floor. If space is constricted and lighting must be above the mirror, use a wide-armed double fixture.



As is common, the original bathroom was an out-house; but this concoction of marble, gaslight, and panoramic wallpaper is perfect for a San Francisco Victorian.

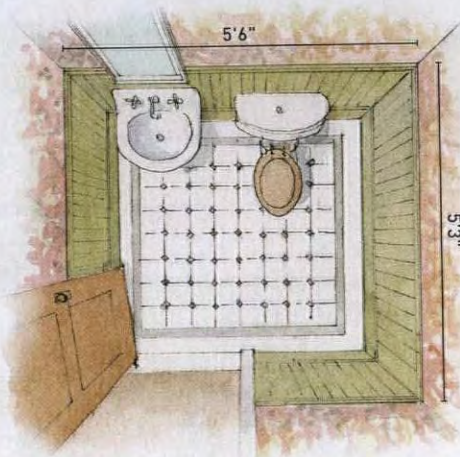




Handsome in wood and marble, the pretty, curved sink recess makes the most of space. The wide chair rail also functions as a grab bar.

## Design By Limitation

Certain minimum clearances apply (some dictated by code, others by comfort), but it's amazing how tiny a half bath can be. You may be tempted to create a jewel box of coveted materials and color.



### CORNER SINK SOLUTION >

A corner sink or corner vanity saves a few inches of clearance. Rounded edges free up a bit of floor space and help avoid collisions with hard edges in a tight space.

### < FIXTURES ON ONE WALL

This is a common layout because it's cheaper and easier to install plumbing on just one wall. But it's not the most comfortable or efficient in use. Be sure to allow clearance on both sides of fixtures and for the door swing.

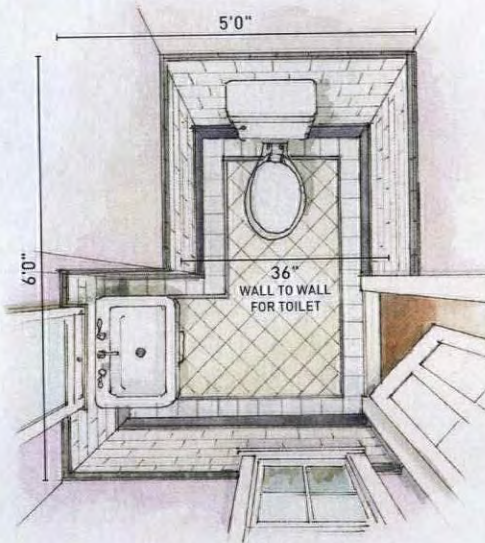


## VENTING THE ROOM

Ventilation and airflow is crucial in a powder room's small space. According to most building codes, a window providing ventilation should be at least 5% of the square footage of the room or no smaller than 1 1/2 square feet.

Mechanical ventilation is recommended with ducting to the roof, soffit, or sidewall (not attic or crawl space).

According to the Home Ventilating Institute, bathroom fans should move at least 1 CFM (cubic feet per minute) for every square foot of floor space. (Home inspectors put a square of toilet paper on the fan grille; if the draw is strong enough, the paper stays put.) The fan's noise level is important, and is measured by sone ratings from 0.5 to 6.0. A refrigerator operates at 1 sone; the recommendation is a fan delivering 2 sones or less. (If your fan was installed before 2006, it's probably noisy and needs upgrading.)

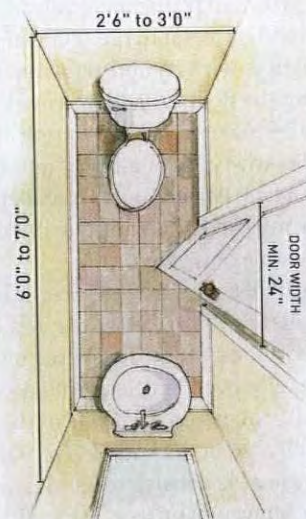


### FIXTURES OPPOSITE >

This super-efficient use of space is common for powder rooms retrofitted into hallways and underneath stairs.

### < FINDING A NICHE

With fixtures on different walls, an L-shape shrinks the room's overall dimensions. In old houses, space may come from an adjoining closet.







Look for small-scale or double-duty bathroom accessories.

**SPACE SAVERS** *Don't scrimp on clearances between fixtures and walls. Instead, use some of these tricks and specialty items.*

- **in-wall storage** For extra space that doesn't take up any footprint, niches can be built into walls between studs (as above), fitted with shelves, and left open or covered with a door or a mirror. Similarly, a narrow shelf may be used to cap the wainscot, or built high on the wall or over the door.
- **floating fixtures** The room feels bigger if you can see the entire floor. So consider a wall-mounted toilet and sink. With their open bases, pedestal and console sinks also take up less visual space.
- **corner sinks** Whether it's a sink specially made for a corner, or a drop-in sink bowl set into a corner cabinet, these free up floor space and can even bring a unique look.
- **mirrors** An oversize mirror reflects the opposite end of the room and light, making the room feel bigger.
- **small-scale accessories** Sconces and ceiling fixtures can be ordered with low-projection canopies or arms. Many plumbing-accessory lines offer smaller-scale towel rods, etc.—or consider buying such things from a yacht or RV supplier.

## ROOM SIZE AND PLAN

Recent design recommendations for powder rooms suggest 60 square feet, but most half baths in old houses are considerably smaller. Minimum size is based on local codes for clearances between and beside fixtures, but common sense suggests that a 5' x 5' room (25 square feet) is a comfortable minimum.

Clearances for using the toilet are critical to maintain. (You can save a bit of room with a round bowl rather than the elongated bowl many prefer.) A minimum of 5' of headroom is required above the toilet; with the right placement, you might get away with less under a staircase, but check codes. Most codes call for a minimum of 15" from the toilet's centerline to a

wall or another fixture (i.e., 30" minimum space width for the toilet). That's tight in all cases. If family members are big or tall, 18" (36" width) is a more comfortable minimum. Most building codes mandate at least 21" clearance in front of the toilet. That's very, very tight in practice. Perhaps 24" will do if it's what you've got, but 30" is better.

Generally used only for hand washing, a powder-room sink bowl can be smaller than average, even as small as 12" wide; then add lip or countertop. Comfort comes from having 30" from the edge of the sink to the nearest wall or fixture. The typical projection (from the wall) for sinks is about 20–22", but narrow-depth models go down to 16". A cabinet provides out-of-

sight, in-room storage but takes up more real and visual room than a pedestal or floating sink. A corner sink makes the most of space, as do rounded corners.

In configuring the room or placing fixtures, consider the door swing. Standard widths for interior doors are 28", 30", and 32". Old houses sometimes demand compromises: 24" (may be special order) is the absolute minimum for a swinging door. Wheelchairs need a 36" door minimum. Consider a door fitted with frosted or stained glass, or add a transom at the top, to allow light between rooms. The door may swing out, if necessary. Consider a pocket door or a rolling "barn" door, but keep in mind many people find them uncomfortable in terms of privacy.



**ABOVE** "Small spaces should be exquisite," says Vermont designer Amy Thebault, who used a parasol-like lighting shade and antiques. **TOP LEFT** In lieu of a medicine cabinet, an old mirror swings open over shelves built between studs.



**RIGHT** Decorated powder rooms need not be frilly; this one by David Heide Design Studio is architectural with matte black paint, brick-like tiles, dark granite, and period stencil decoration. **BELOW** Designer Leta Austin Foster thought the boiler room would make a nice powder room, one evoking a seaside grotto. **INSET** Christa Wilm used mushroom coral, donkey-ear abalone, and ringed cowrie shells for the wainscot. **OPPOSITE** Space was made for the toilet by carving a bit from an adjoining room; the classic bath is monochromatically serene.



## BASIC BATH TO JEWEL BOX

Every longed-for upgrade costs less in a tiny space! A wood or tile wainscot adds interest to a nondescript room. Tongue-and-groove beadboard and board-and-batten wood paneling are affordable and familiar. (You can even buy faux beadboard, a paintable, damp-friendly vinyl wallpaper: [grahambrown.com](http://grahambrown.com).) Tile is more suitable for an often-wet bathroom, but you probably want to avoid an unnecessarily clinical look in a half bath for guest use. For richness and decorative effect, consider colored or Arts & Crafts or tile laid up in unusual patterns.

There's no universal rule on wainscot height, except that dividing the room's height in half rarely looks good. Go taller

than the vanity or sink to protect the wall behind from splash-back. Consider that prefab beadboard panels are 48" tall. Back-prime and caulk wood wainscoting in damp spaces such as a bathroom.

In this small but public room, be adventurous with wall treatments. Coverings can be used that are too delicate for a humid full bath. This includes using paper—or fabric, which makes the room intimate and dampens sound.

Full baths demand easy-care, water-resistant flooring, but a wood floor stands up in a half-bath. Get artistic (or serene) effects with stone or tile. The ceiling is another unbroken plane, and one that gets no splash-back, so indulge your desire for a ceiling paper or decorative painting.





#### **SIMPLE ELEGANCE**

Even with the marble floor, this room flows seamlessly from public areas of the house. Board walls need no embellishment and the window is the best amenity. Note storage built into the wall behind the arched toilet niche.





# Colonial in the Suburbs

"The charm of the Colonial Home depends [on a] graceful entry," according to the 1926 Gordon-Van Tine catalog.



Beautifully crafted mortise-and-tenon wood shutters in all styles, including cottage-style **cutout shutters** in dozens of designs (or supply your own pattern). Standard cutouts add \$42 per pair. [shuttercraft.com](http://shuttercraft.com)



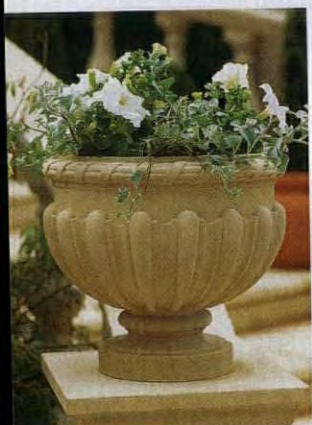
A world away from white vinyl, warm **ecru-color shades** are one option from this custom maker of spring-roller shades in cotton cloth. With straight or scalloped hem, braid or fringe trim, Craftsman-era stencil decoration, various pulls. Sizes 15-72" W x 15-84" L; a plain 36" x 60" shade is \$77. [thehandwerkshop.com](http://thehandwerkshop.com)

Simpson's Traditional-series #2130 exterior **six-panel door** has engineered all-wood stiles and rails with dowel-pinned joinery, 3/4" double hip raised panels and ovolo sticking. Custom, in many wood species; see website for dealers and quotes. [simpsondoor.com](http://simpsondoor.com)



Gadrooning and fluting mark the **Sheraton vase** in the style of neoclassical-furniture maker Thomas Sheraton. Cast stone for interior, exterior, and conservatory use; 14" tall x 15 1/2" wide, 70 lbs. In bone, buff, and terra-cotta colors, \$286. Pedestals sold, too. [haddonstone.com](http://haddonstone.com)

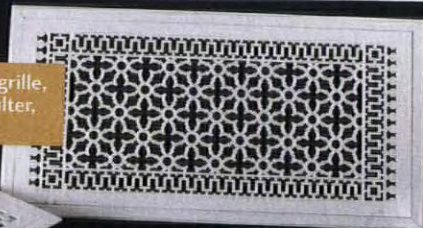
*The Gordon-Van Tine Company of Davenport, Iowa, was an influential early 20th-century manufacturer of pre-cut "mail-order" homes. The company grew out of a regional building-materials supplier that had earlier contracted with Sears.*





## PACIFIC REGISTER COMPANY

Return Air filter grille,  
black washable filter,  
custom sizes



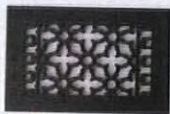
The leading manufacturer of decorative registers, grilles and vent covers.

*Our uniquely crafted products are designed to give a home or commercial space the style, beauty and character you are looking for.*

Low in price and high in quality

All of our products are proudly made in the USA

Sold direct to the end user. We are NOT a reseller and do not sell to resellers.



Cast aluminum registers, powder coated finish

[www.pacificregisterco.com](http://www.pacificregisterco.com)

(844) 487-7500 info@pacificregisterco.com

## Ann Wallace for Prairie Textiles



Curtains, roller shades,  
bedding, table linens,  
embroidered and  
stencilled.

[www.meltonworkroom.com](http://www.meltonworkroom.com) • 213.614.1757



ALL OF THE RESOURCES  
FOR YOUR HOME

[oldhouseonline.com](http://oldhouseonline.com)

the

TIN MAN

ORIGINAL  
DESIGNS

ORIGINAL  
SIZE 2' X 4'

PRESSED-TIN CEILINGS

6", 12" & 24" PATTERNS ~ COMMERCIAL • RESIDENTIAL

TIN PLATED STEEL ~ HAND  
PAINTED & COPPER FINISHES

CHELSEA DECORATIVE METAL CO.  
8212 BRAEWICK DRIVE • HOUSTON, TEXAS 77074

713/721-9200

PayPal

Tinman.com





# English Sensibility

These rooms are part of a radical solution for a small, dark basement kitchen. **By Brian D. Coleman**

The ca. 1880 Romanesque Revival town house in Chicago had an awkward floor plan; the small galley kitchen at the back of the house especially was impractical, with little light or ventilation. The owners worked with designer Kent Kiesey and the venerable Chicago architecture firm Holabird & Root. The team devised a radical but historically sympathetic solution, opening up the back of the house for an 800-square-foot, two-storey kitchen and conservatory addition. The kitchen has British connotations, both in its location in the bottom-floor "English basement" and because of its unfitted layout with a separate scullery. The room connects by an open stairway to the conservatory above.

The kitchen has three separate areas: one for cooking, the second as a cleanup scullery and butler's pantry, and a third for food storage (in a pantry hidden under the stairs). The main cooking area has restaurant-grade, stainless-steel appliances, sinks, and countertops. Glass-fronted cabinets and shirred cotton plaid skirting keep the kitchen rooted in its 19th-century origins.



## 1. THE RANGE AS HEARTH

The main cooking area is anchored by a restaurant-grade, stainless-steel Garland stove. Its utilitarian appearance is timeless, but the historical look comes from setting it in a "hearth" alcove with a mantelshelf above.

## 2. VINTAGE ACCENTS

The kitchen is furnished, not spare, and softened with period-style lighting with hand-painted shades, topiary-motif wallpaper in English green, and an extensive collection of green majolica and dishware.





### 3. A COMMERCIAL MODEL

With a tin ceiling above and a slate floor below in a traditional black-and-ivory checkerboard, the room feels like an old Chicago eatery. The butcher-block center island was even made from a vintage grocery-store checkout counter.

### 4. THE SCULLERY

The scullery—pantry beyond the kitchen proper was designed for separate, easy cleanup. Glass-fronted cabinets allow accessible storage of china and stemware. Open shelves display 19th-century plates and pottery. Here, wooden countertops are more forgiving to delicate china.

## BE INSPIRED...

### TIME FOR TEA

The English antique-style London wall clock has a classic Roman dial widely popular during the Victorian era. With the clockmaker's name on the face; 36 cm (14"), £29.95 (about \$40). Shipping calculated on website. [rogerlascelles.com](http://rogerlascelles.com)

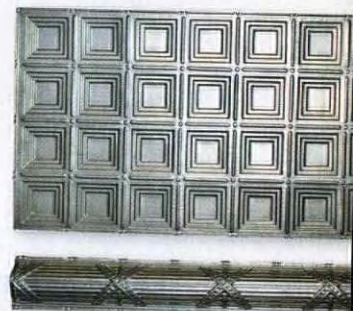
### ENGLISH WALLS

What's more English than Sanderson's 'Woodland Ferns' design in Green, from their A Painter's Garden collection? Also available in Linen colorway and as a fabric. Through your designer or selected showroom. [sanderson-uk.com](http://sanderson-uk.com)



### TIN CEILING

Embossed, tin-plated steel components make up the ceiling center, mouldings, enrichment, and cornice—all among the 140 ceiling designs made by W.F. Norman of Missouri, who have been in business since 1898. Sizes and pricing are given on the website. [wfnorman.com](http://wfnorman.com)



### TRANSFER-PRINTED DINNERWARE

Brown transferware is still made in England by Spode. Five-piece setting: MSRP \$114; \$80 through Neiman Marcus.

[neimanmarcus.com](http://neimanmarcus.com)







# Tile Everywhere

Basic to kitchen and bath, versatile tile shows up in unexpected places.

By Mary Ellen Polson

## 1. BUNNIES LEFT & RIGHT

Surrounded by fiddlehead ferns, sparkleberries, and morning glories, the Briar Rabbit panel is finished in proprietary glazes. Rabbit tiles are 6" x 8" each, while the sparkleberry panels are 2" x 8". As shown, \$831.52. Terra Firma, (803) 643-9399, [terrafirmaarttile.com](http://terrafirmaarttile.com)

## 2. MOUNTAIN TRIPTYCH

Tile murals may be part of an architectural installation, or freestanding art. Depicting an alpine scene in muted glaze colors, "Solitude" is a handmade, three-tile set. It's 7 1/2" high by 18" wide and may be customized. \$225. Ravenstone Tiles, (360) 379-6951, [ravenstonetiles.com](http://ravenstonetiles.com)

## 3. NATURE'S TILE

The handmade tile in the Dogwood Leaves and Berries surround is a custom installation from artist Suzanne Crane. The deco tiles are impressed with natural plant specimens while the clay is still wet. Surround about \$1,450. Suzanne Crane Fine Stoneware, (434) 973-7943, [artscraftspotteryandtiles.com](http://artscraftspotteryandtiles.com)

## 4. THE NUMBERED ONES

Handmade of ceramic stoneware, the Tudor Revival-style house-number and decorative end tiles withstand all weather and mount to wood, masonry, and composite surfaces. In blue or brown, they measure 6" high x 3" wide. \$23 each. Oak Park Home & Hardware, (773) 836-3606, [oakparkhome-hardware.com](http://oakparkhome-hardware.com)

## 5. HUES OF CALIFORNIA

Made for a 1928 Spanish Colonial, a star-shaped fountain features *cuerda seca* (raised line) and *cuenca* (resist line) tiles. Square Leaf Medallion (perimeter), Winged Circle and Small Chevron Border (pool). \$16-\$25 each. Native Tile, (310) 533-8684, [nativetile.com](http://nativetile.com)

1



2



3



4



5







6



7

#### 6. IT'S A CINCH

Not all tile is ceramic: Brighten the bath with easy-to-install Marmoleum Click Cinch LOC laminate tiles. The water-repellent 12" x 12" tiles are sound absorbing, have a 2.5 mm wear layer, and go down quickly without glue. \$5.49 to \$5.99 per square foot. Forbo Flooring Systems, (570) 459-0771, [forboflooringna.com](http://forboflooringna.com)

#### 7. HEADBANGER LAMP

The Woodpecker lamp has a painted base made by the Workshops of David T. Smith and a Motawi tile from a design by American minimalist artist Charley Harper. One of three available styles, the lamp measures 26" high x 15 1/4" wide. \$495. Charley Harper Art Studio, (513) 522-0545, [charleyharperstudio.com](http://charleyharperstudio.com)



8

#### 8. ARTISTS' PATTERNS

Rosemoor on Snape is part of a new collection of ceramic tile "bricks" inspired by English country gardens. The tiles are crafted by artists near Devon, England, and measure 6" wide x 3" high x 3/8" thick. \$5.95 each. Winchester Tile Company, (508) 507-6228, [winchestertiles.com](http://winchestertiles.com)

#### 9. SHADOW AND RELIEF

Grasmere is composed of two tiles—one concave, one with piercings and cutouts—fused together for a two-dimensional effect. Remarkably, the 6" x 6" tiles are fired only once so the lead-free glaze bonds with the clay. \$210. Tudor Tile, (360) 647-2596, [tudortile.com](http://tudortile.com)



9



10

#### 10. BATCHELDER REVIVAL

Originally patented by Ernest Batchelder, the uniquely shaped Stonehammer field and deco pavers are unglazed, high-fired stoneware. Use the 6" x 6" tiles indoors or out, on floors, patios, entries, or fireplaces. Field tiles \$16.50 per sq. ft. Decos \$23.60 each. Heritage Tile, (888) 387-3280, [heritagetile.com](http://heritagetile.com)





THEY STILL MAKE...



## CONSERVATORIES

Unlike a greenhouse, a conservatory is a glass house permanently attached to a building. Those we associate with English Victorian architecture trace back to the introduction of orange trees in western Europe during the Renaissance. Special glazed *orangeries* were built to overwinter the citrus plants.

In the late 18th and early 19th centuries, England's

gentry built ostentatious conservatories, also called solariums, for display of exotic species. By the 1850s, homeowners in the U.S. also were building them. Gothic or "cathedral" forms were considered very appropriate.

A conservatory remains a prestigious respite from the barren darkness of winter. New materials and construction techniques allow many

options in size and shape, insulated glazing, efficient HVAC, motorized ventilation and shading, and so on.

Oak Leaf is a premier English designer and manufacturer of bespoke (custom) mahogany conservatories, with client service also in continental Europe and the U.S. Oak Leaf Conservatories of York, (800) 360-6283, [oakleafconservatories.com](http://oakleafconservatories.com)



# Free Information Guide

**WANT FREE INFORMATION ON OLD HOUSE PRODUCTS AND SERVICES?**

Simply visit [www.oldhouseonline.com/lit](http://www.oldhouseonline.com/lit) to order your free information today!

**Abatron**  
Pages Inside Back Cover, 81

**Acorn Mfg.**  
Pages 57, 84

**Alameda Shade Shop**  
Page 53

**Allied Window, Inc.**  
Pages 37, 81

**Americana**  
Pages 59, 81

**American Building  
Restoration Products**  
Page 81

**American Tin Ceiling**  
Page 80

**Ann Wallace**  
Pages 73, 81

**The Antique Drapery  
Rod Co. Inc.**  
Page 81

**Bradbury & Bradbury  
Art Wallpapers**  
Pages 57, 80

**Broad-Axe Flooring**  
Page 81

**Charles P. Rogers**  
Page 47

**Chelsea Decorative Metal Co.**  
Pages 73, 80

**Christie's Wood and Glass**  
Page 81

**Classic Rock Face Block**  
Page 81

**Colonial Plank Flooring**  
Page 82

**The Color People**  
Page 82

**Coppa Woodworking**  
Pages 37, 82

**Crown Point Cabinetry**  
Pages 3, 82

**D.R. Dimes & Company**  
Pages 1, 82

**Daddy Van's**  
Page 82

**Donald Durham Company**  
Page 51

**Drivewood Moulding Co.**  
Page 80

**Early New England Homes**  
Pages 62, 82

**Ecorad**  
Page 82

**Forbo Linoleum**  
Pages 4, 82

**Franmar Chemical**  
Pages 11, 83

**Garbers Crafted Lighting**  
Page 83

**Granville Manufacturing**  
Page 83

**Handwerk Shade Shop**  
Page 83

**Historic Housefitters**  
Page 83

**HomeSpice Décor**  
Pages 61, 83

**House of Antique Hardware**  
Pages 51, 83

**Howard Products**  
Page 59, 83

**Indow**  
Pages 53, 83

**Innerglass Window**  
Pages 55, 84

**J.P. Weaver**  
Pages 9, 80

**J.R. Burrows & Co.**  
Page 80

**Kennebec Company**  
Pages 10, 84

**King Metals**  
Pages Inside Front Cover, 84

**Lanternland**  
Pages 62, 84

**Maineac Production**  
Page 12

**Oak Park Home &  
Hardware Inc.**  
Page 84

**Oneida Air Systems**  
Pages 47, 55, 84

**Pacific Register Company**  
Pages 73, 84

**Park City Rain Gutter**  
Page 84

**Period Lighting Fixture**  
Pages 61, 85

**The Persian Carpet**  
Pages 2, 85

**Plaster Magic**  
Pages 38, 80

**Preservation Products**  
Page 53

**Reggio Register Company**  
Pages 61, 85

**Runtal of North America**  
Pages 6, 85

**Sheldon Slate Products**  
Pages 31, 85

**Shuttercraft**  
Page 47

**Slide-A-Shelf**  
Page 85

**Specification Chemicals**  
Pages 62, 80

**Steam Radiators**  
Page 85

**Stickley**  
Pages Back Cover, 85

**Thistle Hill Weavers**  
Page 85

**Trustworth Studios**  
Page 38

**The Unico System**  
Pages 23, 86

**Velvit Products Co.**  
Page 86

**Vermont Soapstone**  
Pages 61, 86

**Victorian Lighting Works**  
Page 47

**Vintage Doors, LLC**  
Pages 62, 86

**Vintage Hardware & Lighting**  
Pages 38, 86

**W. F. Norman**  
Pages 5, 80

**Woodcraft Supply**  
Pages 23, 86

VISIT [OLDHOUSEONLINE.COM/LIT](http://OLDHOUSEONLINE.COM/LIT) FOR FREE PRODUCT INFORMATION



OLD HOUSE JOURNAL  
ARTS & CRAFTS HOMES  
NEW OLD HOUSE  
EARLY HOMES  
DESIGN CENTER SOURCEBOOK  
PERIOD HOMES  
TRADITIONAL BUILDING  
[OLDHOUSEONLINE.COM](http://OLDHOUSEONLINE.COM)

CABIN LIVING  
LOG HOME LIVING  
TIMBER HOME LIVING  
DREAM HOME SHOWCASE  
LOG & TIMBER HOME PLANNER  
LOG & TIMBER HOME DESIGN GUIDE  
[LOGHOME.COM](http://LOGHOME.COM)

## ADVERTISING INQUIRIES

ACCOUNT EXECUTIVES  
Becky Bernie  
(978) 879-4045  
[bbernie@aimmedia.com](mailto:bbernie@aimmedia.com)

Carol Murray  
(978) 879-4361  
[cmurray@aimmedia.com](mailto:cmurray@aimmedia.com)

ACCOUNT EXECUTIVE, EVENTS  
Julia Hite  
(978) 729-4321  
[jhite@aimmedia.com](mailto:jhite@aimmedia.com)



# WALLS & CEILINGS



## American Tin Ceilings

Authentic tin tiles provide a dramatic look that leaves a lasting impression in any décor. With a number of new colors and patterns, we can help with any project for ceilings, backsplashes and walls.  
888-231-7500; [www.american tinceilings.com](http://www.american tinceilings.com)



## Bradbury & Bradbury Art Wallpapers

Our new collection of hand printed Japanese wallpapers are inspired by traditional patterns and design motifs seen in antique lacquerware, kimonos and decorative papers. Shown here: "Kunio" in Ebony. Samples available on our website.  
707-746-1900; [www.bradbury.com](http://www.bradbury.com)



## Chelsea Decorative Metal Co.

Pressed tin for backsplashes, walls and ceilings. Art deco to Victorian styles that come in 3", 6", 12" and 24" repeat patterns. New copper and hand painted finishes available.  
713-721-9200; [www.tinman.com](http://www.tinman.com)



## Driwood Mouldings

For 100 years, Driwood Mouldings has created architecturally correct mouldings, casings, cornices, and crown. From every style period, our mouldings are designed to fit the proportions of historic homes.  
888-245-9663; [www.driwood.com](http://www.driwood.com)



## JP Weaver

Designers and artisans of European-inspired architectural interior mouldings since 1914. Creators of the Petitsin collection of flexible resin interior architectural ornamental mouldings which can be painted.  
818-500-1740; [www.jpweaver.com](http://www.jpweaver.com)



## J.R. Burrows & Co.

A decorative furnishings supplier in the English tradition, featuring Arts & Crafts movement wallpaper, fabric, and William Morris carpet, Scottish lace curtains, and Wilton and Brussels reproduction historic carpet.  
800-347-1795; [www.burrows.com](http://www.burrows.com)



## Plaster Magic

Plaster Magic, manufactured by BWA, Inc. is the only product that repairs your plaster. This product reinforces the subsurface plaster structure, in half the time and for half the money. This advanced patented formula can be used by anyone and has been demonstrated on national TV.  
[www.plastermagic.com](http://www.plastermagic.com)



## Specification Chemicals, Inc.

Nu-Wal® restoration system for damaged walls and ceilings covers and reinforces the entire surface with a fine-textured fiberglass, embedded in elastomeric adhesive. Nu-Wal® also serves as lead encapsulation and is quick, affordable, and long-lasting.  
800-247-3932  
[www.spec-chem.com](http://www.spec-chem.com)



## W.F. Norman Corporation

Founded in 1898, W. F. Norman Corp. has the nation's most complete collection of quality, hand pressed ceilings, cornices, moldings, and ornaments. Call today for our catalog or view our products online!  
800-641-4038; [www.wfnorman.com](http://www.wfnorman.com)





### Abatron, Inc

Banish cracks forever with KRACK KOTE® crack repair kit for drywall and plaster. Makes permanent, invisible repairs to walls and ceilings quickly and easily! Retains flexibility and does not shrink. [www.abatron.com](http://www.abatron.com)



### Allied Window, Inc.

The Culbertson Mansion cried out for Custom "Invisible" Storm Windows®—with bent glass for the Queen Anne turret windows. Allied Window answered the call. Interior or exterior applications, custom colors, special shapes, and special glazing are all routine. Our abilities meet the needs of the professional in the field or the homeowner—for the conventional to the extraordinary. 800-445-5411; [www.invisiblestorms.com](http://www.invisiblestorms.com)



### Americana

Americana offers the entire DeVenco line of hand-crafted, high quality custom manufactured window coverings including: authentic Colonial Wooden blinds, interior shutters in four designs: solid Raised Panels, Plantation, Victorian, and Caribbean movable louver shutters. Exterior shutters in three designs: Raised Panel, Movable and Fixed louvers. 800-269-5697; [www.shutterblinds.com](http://www.shutterblinds.com)



### American Building Restoration Products, Inc.

ABR WATERLESS Fireplace Cleaner™ is a temporary cleaning coating designed to remove soot, dirt and grime from your fireplace. Apply, let it dry and peel the dirt away. The creamy, opaque color allows for an even and "easy to see" application. May be used on interior and exterior surfaces, and requires NO WATER in its application or removal. 800-346-7532; [www.abrp.com](http://www.abrp.com)



### Ann Wallace for Prairie Textiles

We have been providing window treatments for period homes for more than 24 years. Please view our custom hand painted or stenciled roller shades and appliquéd curtains with period hardware. Patterns, stencil templates and kits as well. Extensive library of applique and stencil designs to choose from. 213-614-1757; [www.meltonworkroom.com](http://www.meltonworkroom.com)



### The Antique Drapery Rod Co. Inc

Our corded traverse rods combine our old world craftsmanship with the modern innovation of heavy duty traverse functionality. Choose from our many antique-inspired finials and brackets in one of our 25 hand applied finishes. From 3' to 24' long, we can accent your window. [www.antiquedraperyrod.com](http://www.antiquedraperyrod.com)



### Broad-Axe Flooring

Broad-Axe Flooring offers Eastern White Pine flooring and paneling. White Pine is warm and resilient underfoot. It has been used for wide pine flooring in New England homes since the early days of settlement. High quality at a reasonable price. 802-257-0064; [www.broadaxeflooring.com](http://www.broadaxeflooring.com)



### Christie's Wood and Glass

The Breeze! America's answer to the Dutch Door. The beauty of a handcrafted entry door. The functions of both an entry and screen door. See the video and gallery. It's magic! Custom Entryway builders for over 35 years. [www.entryways.com](http://www.entryways.com)



### Classic Rock Face Block

Exact replicas of historic concrete rock face block. Cast from original molds, blocks come in various designs and sizes including veneers. Available in the US and Canada. No minimum orders. 727-480-6768; [www.classicrockfaceblock.com](http://www.classicrockfaceblock.com)





#### Colonialplankfloors.com

We Create Floors with Passion!  
Our hand crafted plank floors are characterized by solid hardwood planks up to 13 feet long with amazing texture and beautiful hand rubbed finishes. Great choice for traditional American style.  
215-997-3390; [www.colonialplankfloors.com](http://www.colonialplankfloors.com)



#### The Color People

EVERYONE DREAMS IN COLOR  
For 30 years we have been making people's dreams come true all over America with our famous mail order service. We create color schemes for every style and era of buildings, residential and commercial.  
303-308-0220; [www.colorpeople.com](http://www.colorpeople.com)



#### Coppa Woodworking, Inc.

High quality, custom made wood screen and storm doors. Over 300 designs, various wood types and finishes, made to any size. Arch tops, dog doors, security doors, window screens and storm windows are also available. Made in the USA.  
Available direct, nationwide.  
310-548-4142; [www.coppawoodworking.com](http://www.coppawoodworking.com)



#### Crown Point Cabinetry

Crown Point Cabinetry handcrafts the finest quality custom cabinetry for your entire home. Period styles include Shaker, Arts & Crafts, Early American, Victorian, Transitional and Contemporary. Available direct nationwide.  
800-999-4994; [www.crown-point.com](http://www.crown-point.com)



#### Daddy Van's

Nourish, renew and protect all the wood in your home with this premium beeswax polish. Imparts a beautiful, healthy glow to antique furniture, new furniture, cabinetry, wood trim and countertops.  
[www.daddyvans.com](http://www.daddyvans.com)



#### D.R. Dimes & Company, Ltd

We are known for making the finest American Windsor Chairs, but we make English Windsors as well. This Georgian Arm Chair may be the most comfortable wooden chair made anywhere.  
[www.drimes.com](http://www.drimes.com)



#### Early New England Homes

Our 1750s home building system boasts beautiful timbered ceilings, a center chimney, wide board floors and many handmade features. Early New England life with the convenience and efficiency of a new home.  
860-643-1148; [www.earlynewenglandhomes.com](http://www.earlynewenglandhomes.com)



#### Ecorad

Experts in Restoration of Cast Iron Radiators  
Large inventory sized to your needs  
Service of restoration  
Unique paint removal process by water pressure  
Electric upgrade available  
855-632-6723; [www.ecoradusa.com](http://www.ecoradusa.com)



#### Forbo Flooring

Create a beautiful, healthy home with Marmoleum Modular tile. Mix and match our palette of 67 colors and 4 coordinated tile sizes to easily create custom floors to fit your style.  
[www.forboflooringna.com](http://www.forboflooringna.com)





### Franmar

BLUE BEAR products are the effective, safe, and affordable replacements of traditional hazardous products in the marketplace, such as methylene chloride. Finish your restoration projects easily and safely without going over budget.

800-538-5069;

[www.franmar.com/consumer-products](http://www.franmar.com/consumer-products)



### Garbers Crafted Lighting

Country/Primitive Ceiling Fans

Tinware, chandeliers, sconces, flush mounts, kitchen island, and lots more to make your country home complete. Direct from crafter.

866-856-2317; [www.garbers-craftedlighting.com](http://www.garbers-craftedlighting.com)



### The Handwerk Shade Shop

Crafting custom cotton spring roller shades for more than 25 years.

503-659-0914

[www.thehandwerkshop.com](http://www.thehandwerkshop.com)



### Granville Manufacturing

Suppliers of specialty wood products and exterior siding, roofing, and trim packages.

Also interior trim and flooring.

802-767-4747; [www.woodsiding.com](http://www.woodsiding.com)



### Historic Housefitters Co.

Authentic, hand-forged hardware, made in USA:

iron thumbblatches, mortise lock sets, H and HL hinges, strap hinges, hearth cooking tools, pot racks, fireplace equipment, hooks, towel bars, cabinet pulls and custom iron work. Brass and glass door knobs and lever sets.

800-247-4111; [www.historichousefitters.com](http://www.historichousefitters.com)



### HomeSpice Décor

Inspired primitive décor by passionate artists.

HomeSpice blends comfort, practicality and luxury with their braided, hooked & penny rugs, table top accessories and pillows.

678-468-3022; [www.homespice.com](http://www.homespice.com)



### House of Antique Hardware

Discover exquisite Victorian chandeliers, as well as lighting from Colonial to Mid-Century Modern, push button light switches, switch plates, and hardware for every room in your house.

Call their friendly hardware specialists for help with your selection.

888-223-2545; [www.houseofantiquehardware.com](http://www.houseofantiquehardware.com)



### Howard Products, Inc.

Once mixed with water and then added to your paint, Chalk-Tique Powder Additive turns any latex, acrylic, or water based paint into a durable chalk-style paint that's easy to use and can adhere to almost any surface.

[www.howardproducts.com](http://www.howardproducts.com)



### Indow Window Inserts

Window inserts that instantly block cold drafts, increase energy efficiency and hush outside noise. Award-winning design is easy to install and remove.

Perfect for historic windows.

503-822-3805; [www.indowwindows.com](http://www.indowwindows.com)

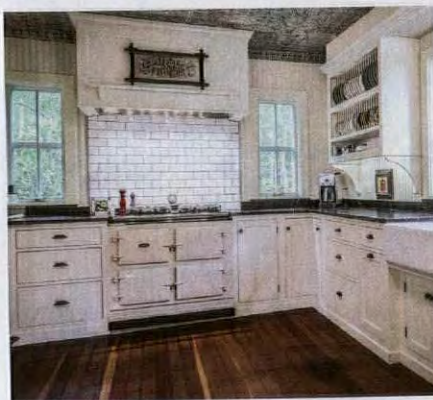




### Innerglass Window Systems

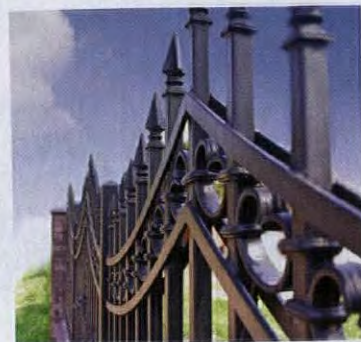
Custom glass interior storm windows for energy conservation and soundproofing. An interior storm that outperforms almost any replacement, yet maintains the integrity and beauty of your historic house. Invisible from the outside.

Perfect for screened porches, too.  
800-743-6207; [www.stormwindows.com](http://www.stormwindows.com)



### Kennebec Company

Maine craftsmen build cabinetry and relationships to last a lifetime. Furniture based design and construction in authentic architectural style produce rooms that fit your home and your life.  
207-443-2131; [www.kennebeccompany.com](http://www.kennebeccompany.com)



### King Metals

A commitment to quality and authenticity is needed when considering how to preserve the architecture of yesteryears. At King Metals, our passion for maintaining authenticity started three generations ago and continues to be the driving force moving us forward. Visit us today!  
800-542-2379; [www.kingmetals.com](http://www.kingmetals.com)



### Lanternland Copper Lanterns & Outdoor Lighting

Authentic period lighting designs handmade in the USA from solid copper and brass. Custom orders, reproductions, choice of finish & glass, free shipping, lifetime warranty, easy order online.  
855-454-5200; [www.lanternland.com](http://www.lanternland.com)



### Oak Park Home & Hardware, Inc.

Offering a comprehensive line of Craftsman Style Exterior Lighting for over 16 years. Made in USA and available in a wide variety of filigree, overlay, finish, and glass options.

773-836-3606; [www.oakparkhome-hardware.com](http://www.oakparkhome-hardware.com)



### Oneida Air Systems

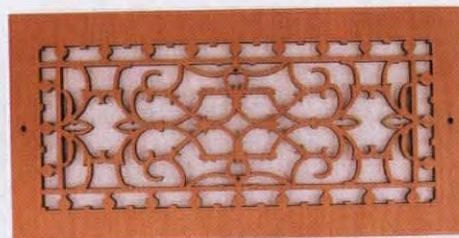
Not all "dust free" floor sanding options are created equal. The Vortex® DCS utilizes cyclonic technology and HEPA filtration for floor sanding that's over 99% dust free.  
[www.vortexdcs.com](http://www.vortexdcs.com)



### OverBoards

OverBoards offers heavy-duty, solid extruded aluminum covers for baseboard heat units. They're made to complement your home's classic architectural details.

800-835-0121  
[www.go-overboard.com](http://www.go-overboard.com)



### Pacific Register Company

State-of-the-art facility manufactures antique registers, decorative registers, heat vent covers, and other architectural products that are of superior quality at the most competitive and affordable price. Made right here in the USA.  
805-487-7900; [www.pacificregisterco.com](http://www.pacificregisterco.com)



### Park City Rain Gutter

Supplier of high quality European half round gutters & smooth round downspouts. We maintain high stock levels of: Copper, Zinc, Galvanized, and Painted Steel and offer fast shipping.  
435-649-2805; [www.pcraingutter.com](http://www.pcraingutter.com)





### Period Lighting Fixtures

For over 40 years Period Lighting Fixtures has made the finest in 18th and 19th century lighting reproductions. Over 200 different models reproduced from the originals in our finest American Museums. UL listed.  
800-828-6990; [www.periodlighting.com](http://www.periodlighting.com)



### The Persian Carpet

Arts & Crafts Collection  
The most authentic and beautiful rugs in the Arts & Crafts tradition come from our looms to your floor. View our outstanding selection online, at a dealer near you, or call for a catalog.  
919-489-8362; [www.persiancarpet.com](http://www.persiancarpet.com)



### Reggio Registers

Premium quality, cast iron, solid brass, aluminum, steel, and wood grilles and registers. Historic and modern designs in the widest selection of sizes with quick shipping. Reggio's grilles are hand-crafted in America and Guaranteed for Life.  
844-834-9949; [www.reggioregister.com](http://www.reggioregister.com)



### Runtal Radiators

Designer radiators for hot water, electric and steam heating systems. In stock product as well as made-to-order in thousands of sizes and configurations in an array of colors. Ideal replacement for fin-tube or cast iron radiators.  
800-526-2621; [www.runtalnorthamerica.com](http://www.runtalnorthamerica.com)



### Sheldon Slate Products

Mining and manufacturing of slate products. Sinks, counters, floor tile, roofing, and monuments. Business from earth to finished product. Custom work a specialty.  
207-997-3615 518-642-1280  
[www.sheldonslate.com](http://www.sheldonslate.com)



### Slide-A-Shelf

Now your kitchen, bath, and pantry cabinets can be easily retrofitted with made-to-fit slide-out cabinet organizers. Enjoy storage efficiency and convenient access to the items you store. Order on our website. Income opportunities available for qualified installers, contractors, and remodelers.  
800-507-0522; [www.slideashelf.com](http://www.slideashelf.com)



### Steam Radiators

Steam Radiators are a stylish alternative to bulky cast iron. Three sleek designs allow you to free up valuable floor space. In stock for immediate delivery. Available in over 100 colors.  
[www.steamradiators.com](http://www.steamradiators.com)  
1-800-966-0587



### Stickley

Introducing the 2017 Stickley Collector Edition Cabinet. Available in solid quartersawn white oak or cherry, with Harvey Ellis inlay panels or glass doors and sides; each in 3 standard finishes.  
[www.stickley.com](http://www.stickley.com)



### Thistle Hill Weavers

A bespoke weaving mill producing high quality historic reproduction textiles, trims and carpet for museums and private clients. Projects from research to installation.  
[www.thistlehillweavers.com](http://www.thistlehillweavers.com)

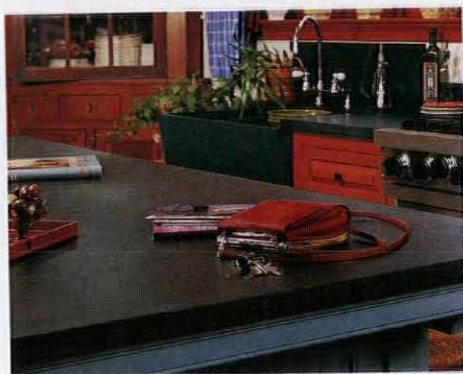


# PRODUCT SHOWCASE



## The Unico System

The Unico System brings energy efficient central heating and air conditioning to older homes. The small, flexible ducts weave above ceilings and below floors, saving space and preserving original architectural features. Small round and slotted outlets come in dozens of finishes to match your decor. 800-527-0896; [www.unicosystem.com](http://www.unicosystem.com)



## Vermont Soapstone

Since 1856 Vermont Soapstone has been crafting the finest custom soapstone counter tops, sinks, floor tiles and home accents. Durable and timeless soapstone never stains or retains bacteria. Installation is available. 800-284-5404; [www.vermontsoapstone.com](http://www.vermontsoapstone.com)



## Vintage Hardware and Lighting

55-BES-DL Large Commercial Architectural Art Deco Wall Sconce design by KenK. An outstanding exterior/interior commercial building sconce. Made from solid brass/bronze material, it weighs in at over 100 lb. It is totally cast by the lost wax casting method. 360-379-9030 [www.vintagehardware.com](http://www.vintagehardware.com)



## Velvit Oil

An interior wood finish that stains, fills, seals, protects, and beautifies all in one coat. Apply to furniture, paneling, antiques, floors, doors, woodwork, picture frames, cutting boards and gun stocks. Easy to repair if surface is damaged. 920-722-8355; [www.velvitproducts.com](http://www.velvitproducts.com)



## Vintage Doors

Handcrafted solid wood doors that are made-to-order and built to last. Full line of screen/storm doors, porch panels, exterior and interior doors, Dutch, French, louver and more. Make your home stand out from the rest! 800-787-2001; [www.vintagedoors.com](http://www.vintagedoors.com)

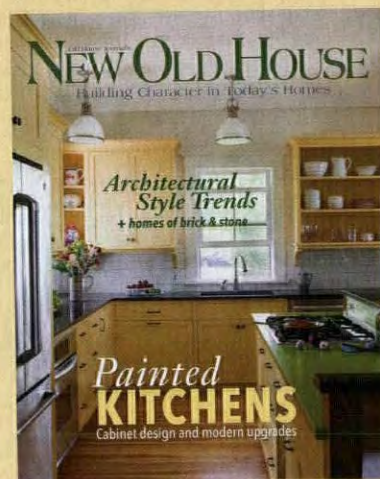


## Woodcraft Supply

Build your own furniture or make treasured gifts for friends and family with *Woodcraft Magazine's* Classic® Project Plans. We have a plan to make your projects easier if you are a beginner—or an accomplished woodworker. Woodcraft Supply, LLC, is one of the nation's oldest and largest suppliers of quality woodworking tools, supplies, and plans that are sold at retail stores nationwide, via catalog and online. 800-225-1153; [www.woodcraft.com](http://www.woodcraft.com)

## New Old House

showcases homes and additions built with the integrity of yesterday and the modern innovations of today. Unique coverage and lavish photo spreads bring together past and present. Regular focus on period-inspired architecture, kitchens & baths, appropriate building products and furnishings.



AVAILABLE 11/28/2017

Inspired Kitchens

Classic Baths

Period Cabinetry

Designer Insights

Period Details

Lavish House Tours,

Interior & Exterior

Traditional Materials

Landscape Design

To order your copy and have it delivered to your door, visit [oldhouseonline.com/buy-noh](http://oldhouseonline.com/buy-noh) or call (800) 234-3797 \$9.99 (U.S.) + shipping



## Resources

### HOUSE OF SUNSHINE

#### PAINTS

(LR/green BR) 'Army Green'; (kitchen) 'Delightful Gold'; (hall) 'Townsend Harbor Brown'; BR 'Barcelona Beige' (btm.) & 'Wool Skein' (top). (exterior, body) 'Stone Brown'; (trim) 'Rockport Gray' (leaves) 'Marsh Brown'; (sash, storms), all **Benjamin Moore**, benjaminmoore.com

#### WALLPAPER

William Morris 'Vine' paper no longer available; fabric in green colorway **Morris & Co.**, william-morris.co.uk

#### MORRIS PATTERNS

**Bradbury & Bradbury** bradbury.com Morris Tradition room sets  
**J.R. Burrows & Co.** burrows.com Morris-inspired papers and fabrics  
**Cooper Lace** cooperlace.com Morris and other Arts & Crafts-inspired designs **Morris & Co./Style Library** stylelibrary.com authentic Morris papers and textiles. **Trustworth Studios** trustworth.com Morris- and C.F.A. Voysey-inspired papers & textiles

#### FURNITURE

**Stickley** stickley.com reissued Arts & Crafts furniture

#### Related Resources

#### LIGHTING

**House of Antique Hardware** houseofantiquehardware.com early electric lighting

### GEORGIAN BY CANDLELIGHT

#### PAINTS

**Farrow & Ball** us.farrow-ball.com

#### CARPETS

**J.R. Burrows & Company** burrows.com

#### BEESEX CANDLES

**Mole Hollow Candles** molehollowcandles.com

#### ENGLISH OAK FURNITURE

**Fiske & Freeman**, Ipswich, MA: fiskeandfreeman.com

#### Related Resources

#### MILLWORK/FLOORING

**Broad-Axe Flooring** broadaxe flooring.com **Colonial Plank** floors colonialplankfloors.com **Granville Mfg.** woodsiding.com traditional quarter-sawn

apboards since 1857 **Maurer & Neperd** Joyners msjoyners.com authentic custom 18th-century

doors & windows, architectural

work

#### FURNISHINGS

**D.R. Dimes** drdimes.com Windsor chairs, American & English reproductions **Homespice Décor** homespice.com braided rugs, pillows **Thistle Hill Weavers** thistlehillweavers.com historic reproduction fabrics, carpets, trims from Rabbit Goody

#### SUCCESS!

#### GENERAL CONTRACTOR

**Tom Radu Construction**, Monrovia, CA: (626) 488-0526

#### ART TILE

**Pasadena Craftsman Tile** pasadenacraftsmantile.com handcrafted ceramic tiles, in Batchelder revival and original designs, for kitchens & baths, fireplaces, walls, fountains

#### ORNAMENTAL PLASTER

**PLASTER ORNAMENTS, ETC.** Decorator's Supply decorators supply.com largest selection of plaster, compo, wood architectural ornamentation, since 1883 **Pearlworks Architectural Details** pearlworksinc.com hardwood-and-resin-based ornament for walls, ceilings, stairs, fireplaces etc.

pp. 39, 42 **Foster Reeve & Associates** frplaster.com

p. 43 **Frank J. Mangione** frankjmangioneinc.com

p. 45 **J.P. Weaver Co.** jpweaver.com **Driwood Moulding Co.** driwood.com

p. 46 **Boston Ornament Co.** bostonornament.com **David Flaharty Sculptor**, Green Lane, PA: see Facebook or Linked In

#### Related Resources

**Abatron** abatron.com mould making materials; custom moulds & castings; plaster repair products **Marshalltown** marshalltown.com plastering tools **Plaster Magic** plastermagic.com plaster repair products **Specification Chemicals** spec-chem.com Nu-Wal plaster restoration system

#### QUICK MAKEOVERS

#### HIGH QUALITY WAXES

**Daddy Van's** daddylvans.com natural beeswax polish for fine furniture, cabinets & built-ins, paneling, butcher-block, etc. Also colored decorative wax & countertop care products. **Howard Feed n Wax** howardproducts.com conditioning oil with a blend of beeswax and carnauba wax **Minwax Finishing Paste** minwax.com paste wax, natural or dark, for finished and unfinished wood **Real Milk Paint Co.** reallmilkpaint.com hard-drying clear carnauba paste wax for wood & painted surfaces **Renaissance Micro-crystalline Wax** restorationproduct.com museum-grade, micro-crystalline wax product for wood etc.

#### DRAPERY HARDWARE

**Ann Wallace for Prairie Textiles** annwallace.com textile artist offers a basic selection of brass & black-finish rods, rings & brackets **Antique Drapery Rod** antique-draperyrod.com craftsman-made collections in traditional Italian, French & British styles. See their book *The Art of the Antique Drapery Rod*. **Arts and Crafts Period Textiles** textilestudio.com textile studio offers a selection of simple brass curtain hardware **Designer Drapery Hardware** designerdraperyhardware.com wide selection of drapery hardware styles & related products from selected manufacturers **Historic Houseparts** historichouseparts.com decorative drapery hardware including period finials, mercury glass holdbacks **House Parts, Inc.** houseparts.com decorative drapery hardware in wood and metal, specialty traverse system **Judy Soccio Designs** facebook.com/SoccioRodriguez specializes in historical window treatments **Kirsch** kirsch.com widest selection of curtain & drapery hardware for all budgets, widely available **Scalamandre** scalamandre.com legendary maker of passementerie for silk tiebacks, to the trade **Select Drapery Hardware** selectdraperyhardware.com wood or metal poles, rods, brackets, rings, finials in 11 finishes **TMS-Menagerie** tms-menagerie.com period-inspired & contemporary drapery hardware, to the trade **Vintage Hardware & Lighting** vintagehardware.com knobs & holdbacks, some unique designs; tassel tiebacks

#### DO THIS, NOT THAT

#### EPOXY GLUES

**Abatron** abatron.com **West System** westsystem.com

#### POWDER ROOMS

#### DESIGNERS

p. 65 (from top) **Carisa Mahnken** Design Guild cmahnken.com • **Carpenter & MacNeille** carpentermacneille.com

p. 66 (clockwise from top left) **David Heide Design Studio** dhdstudio.com • **Natalie Guertler Interiors** (856) 488-4770, search Houzz, Facebook • **Kent Kiesey** kentkiesey.com • **Ione R. Stiegler Architect** isarchitecture.com

p. 67 **Steve Rynerson**, Rynerson O'Brien rynersonobrien.com

p. 68 **Jeremiah Battles/Acacia Architecture** acaciaarchitects.com

p. 69 (far right) **Amy Thebault** Design thebaultdesign.com

p. 70 (top) **David Heide Design Studio** dhdstudio.com • (btm. left) **Leta Austin Foster & Assoc.** leta austinfoster.com • (artist) **Christa Wilm, Christa's South Seashells** csseashell.com

p. 71 **Peter Zimmerman Architects** pzarchitects.com

#### WALLCOVERINGS

p. 64 artisan-made mosaics

p. 65 grasscloth **Phillip Jeffries** phillipjeffries.com

p. 66 'Compton' **Morris & Co.** william-morris.co.uk • (btm. left) 'Honeysuckle' **Bradbury & Bradbury** bradbury.com

p. 67 'Italian Panorama' **Iksel of Paris** iksel.com

p. 69 (ctr.) custom replication from an old wallpaper book. See also 'Algernon' in Victorian Dresser I Roomset **Bradbury & Bradbury** bradbury.com • (right) walls are fabric-upholstered in 'Medici Floral' **Scalamandre** scalamandre.com

p. 70 (top) lower walls in 'Derby Brown' tiles by **Mission Tile West** missiontilewest.com

#### Related Resources

#### VICTORIAN SCONCES

**House of Antique Hardware** houseofantiquehardware.com **Restoration Lighting Gallery** restorationlightinggalleries.com **Revival Lighting** revivallighting.com **Victorian Lighting Works** vlworks.com **Vintage Hardware & Lighting** vintagehardware.com

#### RETROFIT HEATING

**Ecorad** ecorad.ca restored & converted radiators **OverBoards** go-overboard.com attractive aluminum covers for baseboard heaters **Runtal Radiators** runtalnorthamerica.com full lines of steam & electric radiators, many designed for small spaces; towel-warmer radiators

#### KITCHEN + BATH

#### DESIGNER

**Kent Kiesey**, Chicago: (773) 528-9301, kentkiesey.com

#### METAL CEILING

**W.F. Norman** wfnorman.com

#### WALLPAPER

'Topiary' **Osborne & Little** osborneandlittle.com

#### Related Resources

#### KITCHEN CABINETS

**Crown Point Cabinetry** crownpoint.com see 'Barnstead' door style **Kennebec Company** kennebeccompany.com similar period-authentic cabinets

#### TIN CEILINGS

**American Tin Ceilings** american tinceilings.com **Chelsea Decorative Metal Co.** thetinman.com

#### SLATE FLOORING

**Sheldon Slate** sheldon slate.com



# Remuddling

## DO

... appreciate the survival of early 20th-century Dutch Colonials like this one, quaint with details. The unusual porch is intrinsic to its design and appeal.

NEIGHBOR



## ASSAULT AND BATTERY

These two Dutch Colonial-style houses are within blocks of each other in an old city in Massachusetts. Each has a gambrel roof with a wide front dormer, and both were built with front porches. The sunny yellow house retains its symmetry, its porch and unusual trim. Over the years, the other house was relieved of details, original siding, shutters—and, finally, the porch, which has been enclosed for additional living space. The incongruous pop-out window can hardly replace that amenity.

All sense of time and style has been lost, the proportions ruined, curb appeal abolished. The addition of an ersatz Victorian-style front door is sadly sweet, someone's attempt to restore old-houseness to a shivering victim that was stripped bare.

“A house bug-eyed at the enclosure.”

—Debra Rabe Parker

**TWO WAYS TO WIN!** If you spot a classic example of remuddling, submit it to [viator@aimmedia.com](mailto:viator@aimmedia.com). We'll give you \$100 if your photo are published. If you want to see your witty words on this page, enter our monthly caption contest at [facebook.com/oldhousejournal](https://facebook.com/oldhousejournal).