

PROGRESSIVE ARCHITECTURE APRIL 1966 NEWS REPORT

Architecture's Monthly News Digest of Buildings and Projects, Personalities, New Products

Johnson's Ellis Island Plan Announced

NEW YORK, N.Y. Announced last month were Philip Johnson's design plans for Ellis Island, converting the 27.5-acre New York harbor island into a National Immigration Museum and Park. Writing in *The New York Times*, critic Ada Louise Huxtable stated: "There is no question about the superior design quality of the solution, or its particular historical sensitivity. It is light years ahead of the routine reconstructions and predictably pedestrian memorials usually tendered by Government agencies." For photos and comments, see this month's P/A OBSERVER.

Architects Must Have Licenses for Planning Work in Jersey

TRENTON, N.J. A New Jersey lawsuit, recently concluded, may have far-reaching effects for architects and the services they offer. The direct result is that, in New Jersey, architects cannot call themselves planners, nor presumably offer that service themselves, unless they are formally registered as such. In an hour-long oral opinion at the conclusion of *New Jersey Chapter, AIP vs. New Jersey State Board of Professional Planners*, a case that had dragged on for a year, Judge Frank J. Kingfield ruled that city and regional planning is a different profession than architecture and engineering. Training and experience in the latter fields, he said, does not produce a competent city planner.

The disputed issue was Section 11, paragraph 4, of the New Jersey Professional Planners Licensing Act of 1962. The act requires anyone preparing a comprehensive master plan to take an examination, demonstrating his competence, and to obtain a license. The paragraph in question exempted architects, land surveyors, and

professional engineers, granting them an automatic professional planner's license. As a result of the decision, the paragraph was "severed" from the act and deleted from the statute.

According to Judge Kingfield, the paragraph was unconstitutional under both the state and Federal constitutions. "The fact," he said, "that, historically, planning evolved from architecture and engineering is of little or no consequence. This may be an unfortunate fact, but it is now recognized that the profession of planning is a separate and distinct profession. The evidence does not bear out the fact that an engineer, architect, or land surveyor, by the education he has received and simply with training in his respective field, possesses the qualifications of a professional planner. Even this is admitted by some of the defendants' own witnesses. . . . Going again to the primary purpose of the law, namely, to see that qualified persons undertake planning and recognizing the law that professional planning is a separate profession, it should necessarily follow that only persons educated and trained in professional planning be licensed. If the legislation is to be of any benefit to the public at all, it seems to me that this condition has to be a prerequisite. If this section were to remain in the law, it would result in many incompetent persons being granted a license."

New Jersey is the first state to require licensing of planners. Architects who wish to gain licenses must have 12 years of planning experience and pass a written exam. The act specifies that this exam must test applicants on the history of urban, rural, and regional planning; fundamental theories; research methods and common basic standards in professional planning; administrative and legal problems; instruments and methods; current planning design and technique; and the history, principles, and requirements of planning and zoning procedures in New Jersey.

Weese To Design Capital Subway

WASHINGTON, D.C. Chicago architect Harry Weese was named last month to design stations and provide "conceptual plans" for Washington's proposed 25-mile subway. Selected by the National Capital Transportation Agency, Weese, designer of the Arena State Theater here, will have working plans of the \$431-million system ready for the start of construction sometime next year.

Easier Said Than Dome

HOUSTON, TEX. Domes on structures as large as baseball stadia are easier said than done. The one on the Astrodome here has had more problems than Pandora. Last month, Harris County, its owner, got a bill for \$500,000, the cost of the first year's "minor repairs." According to Houston's Sports Association, which operates it, the dome leaks, the roof steel has rusted, and the walls and floors have cracked.

Utzon Resigns in Sydney

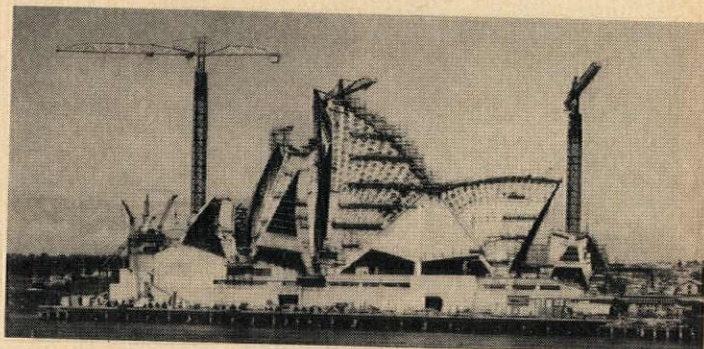


Photo: Australian News and Information Bureau

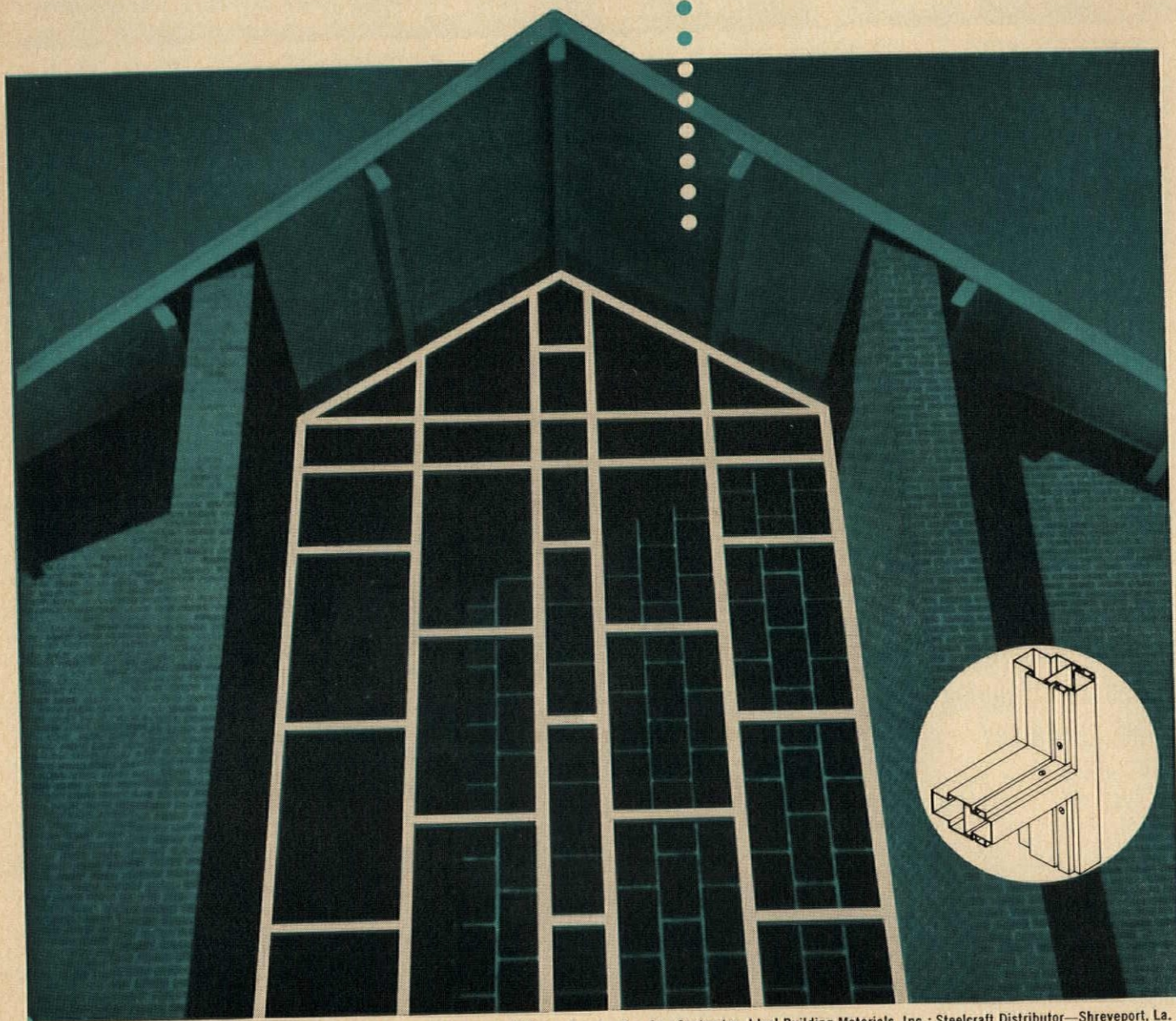
SYDNEY, AUSTRALIA When Joern Utzon won an international competition in 1956 for the design of the Sydney Opera House, no one was sure quite how to build it, but they thought it would cost about \$7 million. By October last year, these estimates were up to \$35 million, and, by last month, they had ballooned to \$50 million. As costs soared so did danders, and in early March Utzon walked off the job.

Some seemed unconcerned by his resignation. "Construction is nearly finished now," said consulting engineer Ove Arup. "We can carry on without too much difficulty. But it has been a very difficult eight years. So many problems . . . but we solved them. Now I am off to the south of France for a bit of a holiday." Others were not so laconic. R.W. Askin, Premier of New South Wales,

was besieged by telegrams and petitions urging him to get Utzon back. And at one point, a group of architects and students marched in protest through the streets of Sydney to Parliament House. In a cable to P/A, Askin was hopeful: "My government has expressed the earnest hope that he will agree to withdraw his resignation on conditions mutually acceptable."

Ostensible reason for the resignation was the government's desire to curtail Utzon's free hand with the Opera House's construction. The mushrooming costs were a political issue in last year's elections, and Askin, in his election campaign, had promised to control them. But government suggestions to appoint a committee of architects to complete the work are unpopular. Utzon's staff has refused flatly to work with

steelcraft metal door frame idea no. **11** in a series



Blanchard Baptist Church, Blanchard, La.; Peyton & McKelvey: Architects, Whitaker Construction Co.: Contractor, Ideal Building Materials, Inc.: Steelcraft Distributor—Shreveport, La.

VERSATILITY UNLIMITED...FROM STANDARD DOOR FRAME SECTIONS



© Steelcraft
1964

Here's an inspiring example of the kind of sophisticated design ideas that can be fabricated to your specifications by your **STEELCRAFT** distributor—right from his stock of pre-engineered standard metal door frame sections.

This is another of the many advantages gained from the use of Steelcraft metal doors and frames. Write for other ideas... and the name of your technically trained Steelcraft distributor.

The Steelcraft Manufacturing Company, 9017 Blue Ash Road, Cincinnati, Ohio 45242

On Readers Service Card, circle No. 453

a committee. One New South Wales architect, Harry Seidler, echoed local discontent with the plan when he said: "It is my very strong opinion that the suggested consortium would be unethical. We are not dealing with an ordinary routine sort of building. It would be unethical for an architect to have the audacity to take on such a work."

"Mutually acceptable" terms seemed unlikely as P/A went to press. Aside from the question of authority, other issues included Utzon's request for \$102,000 in back fees (he has received about \$1 million in fees so far), and his demand that \$2 million worth of plywood be purchased from a dealer said to be in financial trouble rather than submit the order to competitive bids.

NSW's Minister of Public Works, Davis Hughes, seems firm in his desire to limit Utzon's participation to that of a consultant and to set up a construction time/cost table.

Just what is at stake in this quest for design by committee is not clear, since funds to pay for the Opera have been raised so far by public lottery.

It is hoped that the project, an impressive architectural achievement, can be completed as conceived, and that it can be done without further hoopla. Already, cynics Down Under are suggesting that the hall's opening performance be a comic opera about the building of the opera house. Suggested titles: "Joern's Driving Me Crazy," "The Biggest New South Whale," and "Danish Pastry Blues."

Beale Street Blues

MEMPHIS, TENN. Beale Street, the place "where the blues began," was immortalized by W. C. Handy in his "Beale Street Blues." A Prohibition song, it bemoans the passing of booze: "Going to the river, And there's a reason why/Because the river's wet, And Beale Street's done gone dry." The street of sin and incontinence never really shook the pall of Prohibition, and, today, the remembered live beat of jazz and blues are drowned out by the juke box, the bars and chit'lin joints closed down. The pawnshop balls are about the only things that glitter now.

The street, which took its name in 1849 from some military or naval hero—no one quite knows—grew along with Memphis, taking its life blood from the Mississippi. Later, a change in the river's course curtailed Beal's activity as a point of entry and exchange. But for the Negroes coming up from the Mississippi delta and the cane fields of Arkansas, Beale and all its hustle was their first "urban experience."

There was Gallina's Exchange, built in 1891 (and destroyed by fire in 1932), which housed a saloon, a burlesque theater, a restaurant, and a hotel. Gallina took pride in providing his clientele with every necessary service and facility under one roof. There was PeeWee's, opened in 1894 and celebrated as being the place where W.C. Handy, leaning against a cigar counter, wrote the "Memphis Blues." If

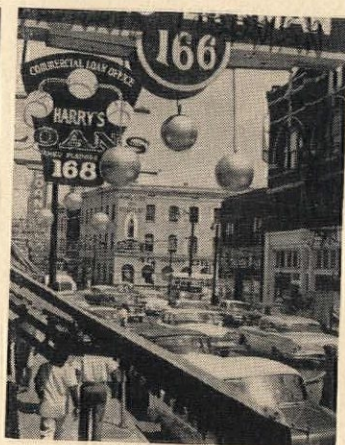


Photo: Charles Nicholas, "The Commercial Appeal"

PeeWee's (a bar until 1912, then a pool hall, later a laundry, now renovated and vacant) was the most famous, the Panama was the most colorful: Its bartender, Bill Bailey, was the street's snappiest dresser and may have been the inspiration for the well known plea in music for him to "come home." On the second floor of the Panama, Mary the Wonder practiced voodoo—with some success. In 1910, the Monarch opened and joined the list of Beale Street emporiums. It was soon to be known as "the castle of the missing men." Bouncers Cousin Hog and Bad Sam would dump dead gamblers in the alleyway, to be picked up that night by the undertaker next door.

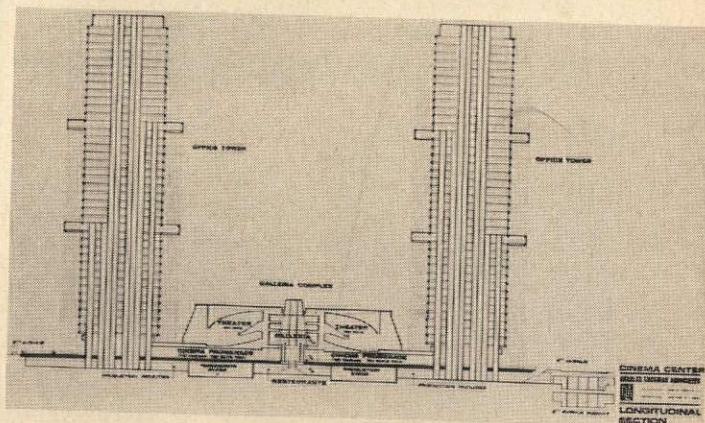
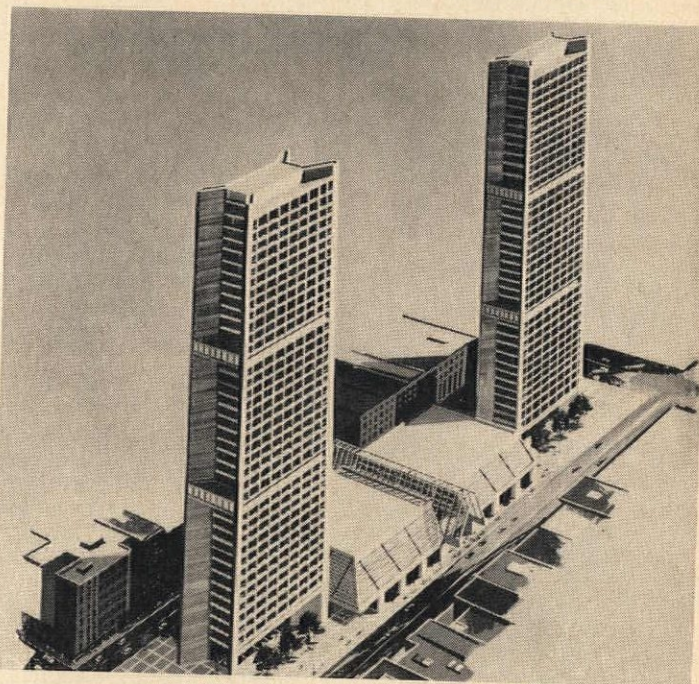
The 167.2 acres that make up what is known as Beale Street bounced with jazz, color, and crime. Handy said of it, "I'd rather be there than any

place I know." But the Beale days as such are gone now, and the Memphis Housing Authority is faced with the job of renovation (91.2 per cent of the structures now standing are substandard ones), restoration, and general clean-up of the area. Renewal plans call for preservation of some of the old Beale landmarks, as well as new housing, stores, theaters, and offices. Though

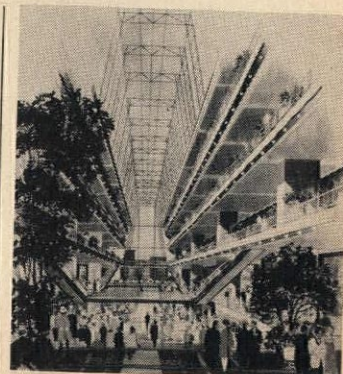
much of the new Beale Street planning is still up in the air, the Memphis Light, Gas and Water Company will build a \$5,500,000 multistory facility that will serve as "the anchor structure for the entire area."

One hopes that Memphis can clear the street of its present clutter, and, with restoration and careful planning, give Beale back some of the life it had before.

TV SCORES TKO ON GARDEN SITE



NEW YORK, N.Y. When the present Madison Square Garden was designed in 1925, it was conceived primarily as an arena for boxing. And it was that, for many years; all the big fights were held there. Joe Louis, Barney Ross, Sugar Ray Robinson, Henry Armstrong, Rocky Graziano—all thought of it as home. But even in the days of the big fights, other events were needed to keep the Garden going, and with TV's inroads in recent years, Garden fights have become fewer and



other events more frequent. Unfortunately, too many of

the Garden's 15,000 permanent seats have obstructed sight-lines to anything not held in the center of the arena floor.

The new Madison Square Garden will change all that (see p. 76, MAY 1964 P/A). And, ironically, the complex of buildings proposed last month to take the place of the present MSG will give succor to the enemy: TV. The winner: Television, by a technical knockout.

Actually, the Charles Luckman Associates-designed buildings are being billed as a Cinema Center. If built as planned, they will provide what its promoters call "the only completely integrated modern facilities in New York for the production, recording, and processing of motion picture, television, and commercial films."

What Luckman and developer Irving Mitchell Felt, president of the Madison Square Garden Corporation, have in mind is a four-acre, full-block

complex with twin 39-story office buildings at either end, and, between them, two connecting seven-story structures containing film and recording studios, two legitimate theaters (each with 1500 seats), and four motion picture studios (each with a 750-person capacity). Between these two latter buildings will be a glass-covered galleria, offering an eight-story sweep from its glass roof to the plaza-level dining facilities. Around the galleria will be promenades and walkways.

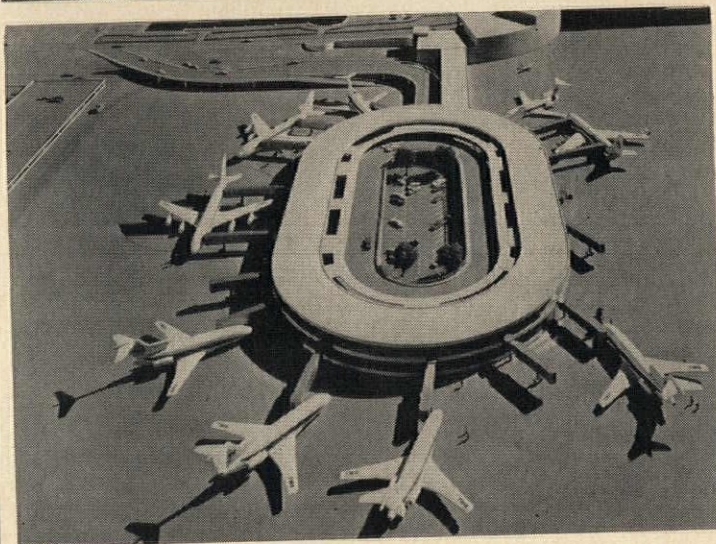
Luckman's design shows each high-rise office tower supported by load-bearing corner fins, which house all mechanical equipment.

Although financing has not yet been arranged for the \$50-million project, and although no tenants have signed up, the developers are confident that construction will begin with the opening of the new Madison Square Garden in late 1967.

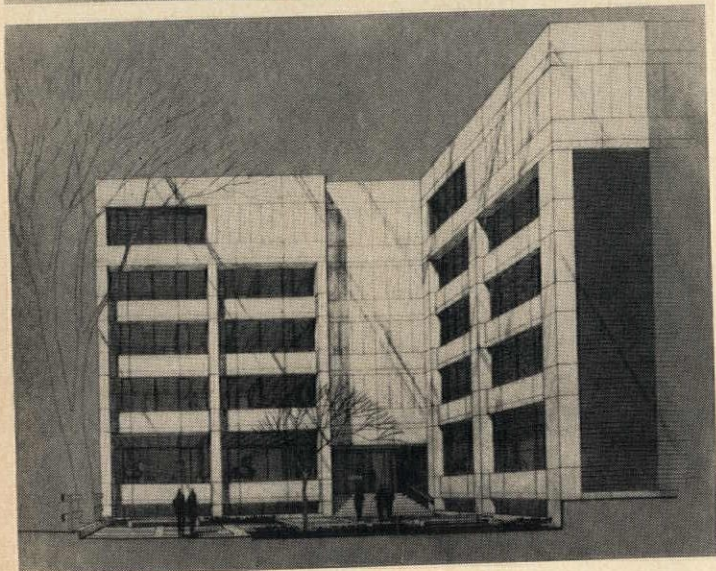
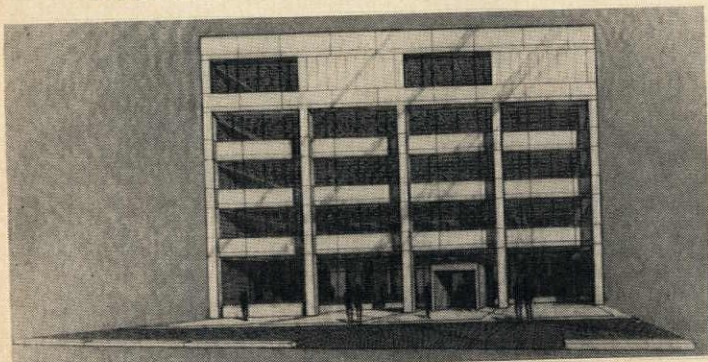
board and tie marks left for detailing. A dark-brown brick, set in dark mortar, will be used on the end walls of the building. All glass will be of the gray, glare-resistant variety. The entrance from Brattle Street will be through a sunken

(land- and fountain-scaped) courtyard, with the added nicety of brick that will be matched for color with the standard brick of Boston sidewalks. Construction will cost \$535,000; completion is scheduled for late this year.

TWA Plans Pittsburgh Gateway



The House That TAC Built



CAMBRIDGE, MASS. Nothing pleases an architect more than to design a house he can live in, except maybe designing an office he can work in. The Architects Collaborative is enjoying the latter type of build-

ing—with two floors to spare. TAC will occupy the basement and first three floors, and will rent the upper two. The 74'x36' building will have an exterior of bush-hammered, cast-in-place concrete with the form-

PITTSBURGH, PA. "When you talk about airport terminals today, you are really talking about gates. You no longer need the conventional monumental terminal building, just gates," says Arnold W. Thompson, who, as a registered architect in White Plains, N.Y., specializes in airport facilities consulting. For 10 years, Thompson was chief architect with American Airlines. In his most recently released airport plan, Thompson has proposed a two-level TWA terminal for the Pittsburgh Airport. TWA wanted a facility that would bring passengers arriving by bus, limousine and car as close to the airplanes as possible. Thompson's plan puts them about 40 paces from one another. As shown in the model, the \$13,700,000 structure would be racetrack-shaped, linked by a straight arm to the existing central terminal. An upper-level, four-lane road would bring vehicles into the

structure's infield, where they would discharge passengers and baggage at any of several curbside check-in gates. A lower-level roadway would take deplaning passengers out.

TWA plans either one or two multilevel parking garages connected to the structure to supplement the limited infield parking. These garages would be connected to the terminal by moving sidewalks and moving baggage ramps, so that check-in and baggage claim could be done where you park your car. Departure lounges, one for each of the dozen planned telescopic, enclosed passageways that lead directly to the airplanes parked by the terminal, will be only steps away from the curbside check-in counters. Thompson has suggested a roof overhanging the oval infield roadways to protect arriving and departing passengers.

TWA, whose link with Pittsburgh goes back to 1930, when three companies (one of which

was Pittsburgh Aviation Industries Corporation) merged to form the first transcontinental airline, foresees a 30 per cent passenger increase in its facilities here by 1968—up to 1,750,000 passengers from a present 1,300,000. By 1975, they expect their passenger load here to reach three million.

Thompson's proposal was presented to the Allegheny County Board of Commissioners for approval and authorization last month. Once the plan is okayed, Thompson, whose role is advisory, will work with the architects selected to prepare a final plan. TWA expects to put up about a third of the money needed for construction, with the county providing the rest.

The terminal should be ready by November 1968.

Coming Up in the World

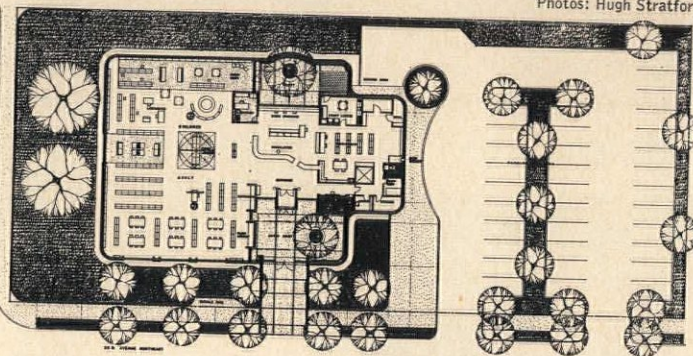


MERRITT ISLAND, FLA. NASA Complex 39, the Apollo-Saturn V assembly and launch complex, has been selected as the "Outstanding Civil Engineering Achievement of the Year." The annual award of the American Society of Civil Engineers is given to that project "which demonstrates the greatest engineering skills and represents the greatest contribution to civil engineering and mankind." And that's saying a lot for a launch complex that is still in its final months of construction, and has yet to launch a rocket anywhere, let alone to the moon. But Complex 39, engineered by Giffels & Rossetti, Inc., of Detroit, does hold a record. The Vertical Assembly Building is the world's largest. If you were so inclined, you could slip the U.N. Building through its 426' 73-ton doors. Architect is The Office of Max O. Urbahn.

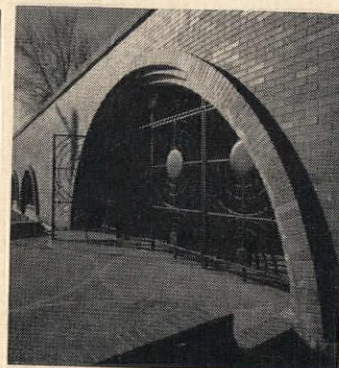
Introverted Library



Photos: Hugh Stratford



SEATTLE, WASH. When John M. Morse was asked to design a public library in what he calls "a confused commercial center"—an area of parking lots, gas stations, etc.—he did *not* put up an ivory tower that might have separated the books and their users from the crass world around them. Instead, he created a façade that keeps the outside out without keeping the inside in. His curving fortress-like reinforced brick masonry exterior wall is pierced by arched, ground-level windows and a larger arched entrance gate that leads from the hodgepodge and bustle of the Seattle streets to a quiet, sheltered entrance courtyard. The steel truss roof has wood shingles. Both the warmth of these shingles and the warmth of the red brick, together with the fabricated bronze entrance gate by artist George Tsutskawa, make the building inviting, despite its appearance of protective strength. Finished early this year at a cost of \$289,000, the Lake City Library is an appropriate home for its 40,000 volumes.



appropriate home for its 40,000 volumes.

Stadium in Philly Gets Architectural Referee

PHILADELPHIA, PA. When preliminary plans for a new, all-purpose city stadium were announced here last summer, what one observer calls a "great hassle" developed over its appearance and its functional arrangement. In announcing the Stonorov & Haws design, P/A commented that, with its surrounding parking lots filled, it was in danger of looking like

"a great, boxlike ship floating on a sea of cars" (pp. 49-50, JANUARY 1966 P/A). But, by then, the members of a Stadium Advisory Commission appointed by the mayor were preparing a report. After talking, in separate, closed sessions, with the city administrators, the architects, and the two would-be tenants (the Philadelphia Phillies and the Philadelphia Eagles),

they issued a report in mid-January.

In it, they stressed the need for a distinctive design that would bring credit to the city, and cited fears that Robert Carpenter, owner of the Phillies, would not let his team play in the stadium as it is now designed. Carpenter objected to the appearance, the aisles, the angling of the seats toward the infield, the loading areas, the entrances, the exits, the escalators, and the location of the parking. In view of all this, the commission made five recommendations:

"(1) The stadium must be constructed to serve its patrons. In this respect, it is no different from building a factory or the Academy of Music. If the work and the performance cannot be accommodated, it will not be successful. The public then will feel they were misled in voting for the bond issue.

"(2) It must be of such architectural quality as to warrant the kind of public endorsement that brought over 300,000 people to view the Houston Stadium and pay \$1 each even when no game was in progress during 1965. Unless it has all these qualities, the two principal tenants—baseball and football—will not be able to draw big enough crowds to supply the cash necessary to attract outstanding players and to build a championship club.

"(3) We recommend that you ask the Philadelphia Chapter of the American Institute of Architects to select a nationally recognized architect who will be employed to cooperate on a consulting basis with the architects now employed by the City. You will recall, this was necessary to resolve the long and bitter dispute in connection with the Federal Court Building [see pp. 48-49, SEPTEMBER 1965 P/A].

"(4) We recommend that there be a new start which might well require a completely new design. In the event of any difference between architects, it should be understood that the consulting architect shall have the final decision and authority on all architectural questions.

"(5) We recommend that the architectural designer make a complete design, including a dome, preferably retractable. Unless this is done now, in the design stage, we do not believe it is feasible to determine the location, numbers, and design of pilings, footings, foundation

walls and superstructure. The heating, ventilating and air-conditioning designs must be evaluated for a dome construction. Also, the need for electrical power will be affected by the ultimate addition of a dome."

Acting on the Commission's recommendations, the city last month appointed Hugh A. Stubbins, Jr., of Cambridge, Mass., architectural referee. He was selected from a list of three prepared by the local AIA chapter. Stubbins will work with the original architects,

George M. Ewing Co., Stonorov & Haws, and the structural engineers, McCormick-Taylor Associates. If further disputes arise among the architects, the Phillies, and the Eagles, Stubbins, who plans to open a Philadelphia office, will make the final decision.

Redesign is expected to delay the stadium's opening two years beyond the original 1967 date.

In November, Philadelphia voters will decide whether or not to issue \$18 million in bonds to finance a roof.

One pleasant feature of the Hartford Building is a restaurant in a separate structure at the rear. Even without com-

pleted landscaping, the Plaza Cafeteria forms a pleasant terminus for the building's rear courtyard.

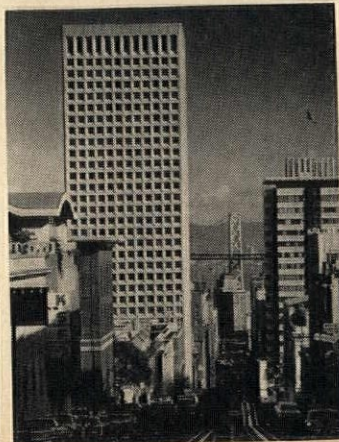
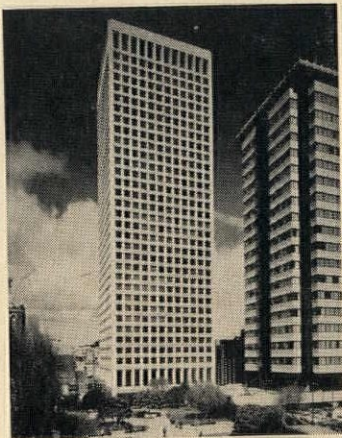
Hartford Building: Right and Wrong



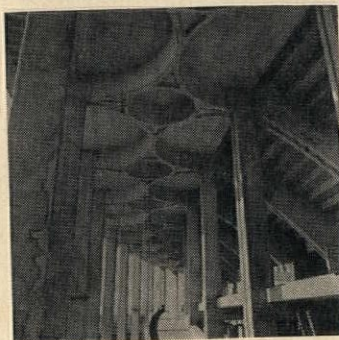
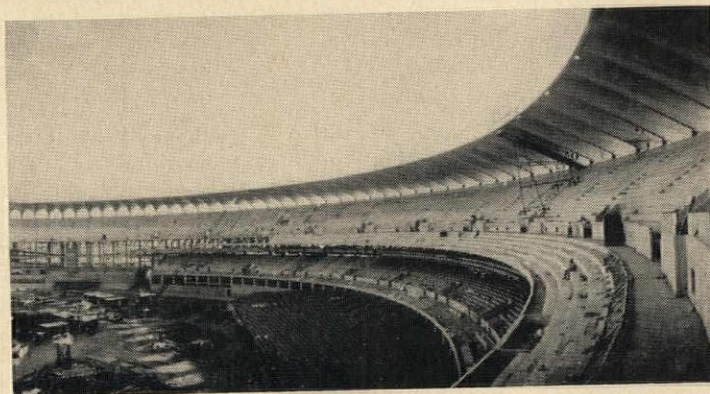
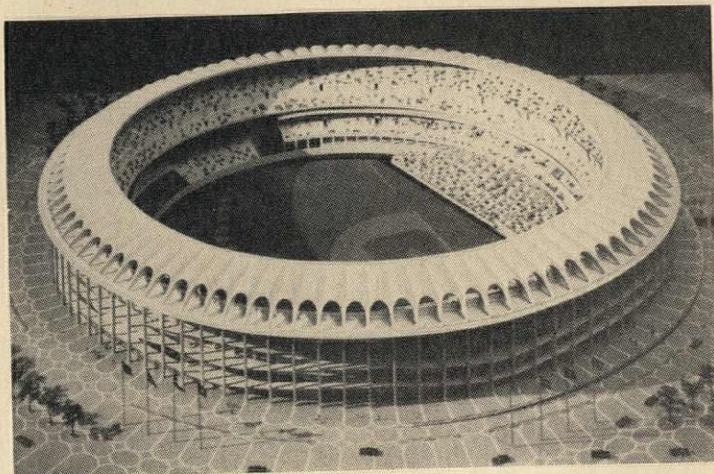
Photos: Morley Baer

SAN FRANCISCO, CALIF. Rising proudly from a site half way up Nob Hill, the San Francisco headquarters of the Hartford Insurance Group—the Hartford Building—is a monument of carefully detailed design. Its clean lines thrust 33 stories into the sky—blocking many of the views from the hilltop structures above it. Designed by Skidmore, Owings & Merrill (San Francisco office), it is the maximization of the SOM look. But despite its clean lines and the white cast stone of its façade, which blend well with San Francisco, it is the right building in the wrong place. It dwarfs St. Mary's Church next door, and, although SOM is designing a church rectory that is planned as a transitional element between the office building and the church, it is doubtful if the two can be tied together, so disparate are they in size and style. Can David and Goliath be friends?

Even SOM is not sure. "We will have to wait until it is finished to tell," says Edward C. Bassett of Skidmore, Owings & Merrill.



Stone's St. Louis Stadium Opens



ST. LOUIS, MO. Opening this month, with the start of the 1966 baseball season, is the soon-to-be completed Busch Memorial Stadium designed by Edward Durrell Stone. Stone's 50,000-seat stadium has a façade of repetitive concrete arches, reiterating the graceful loop of Saarinen's Gateway Arch, which overlooks it. It also has a cantilevered concrete roof above the upper deck.

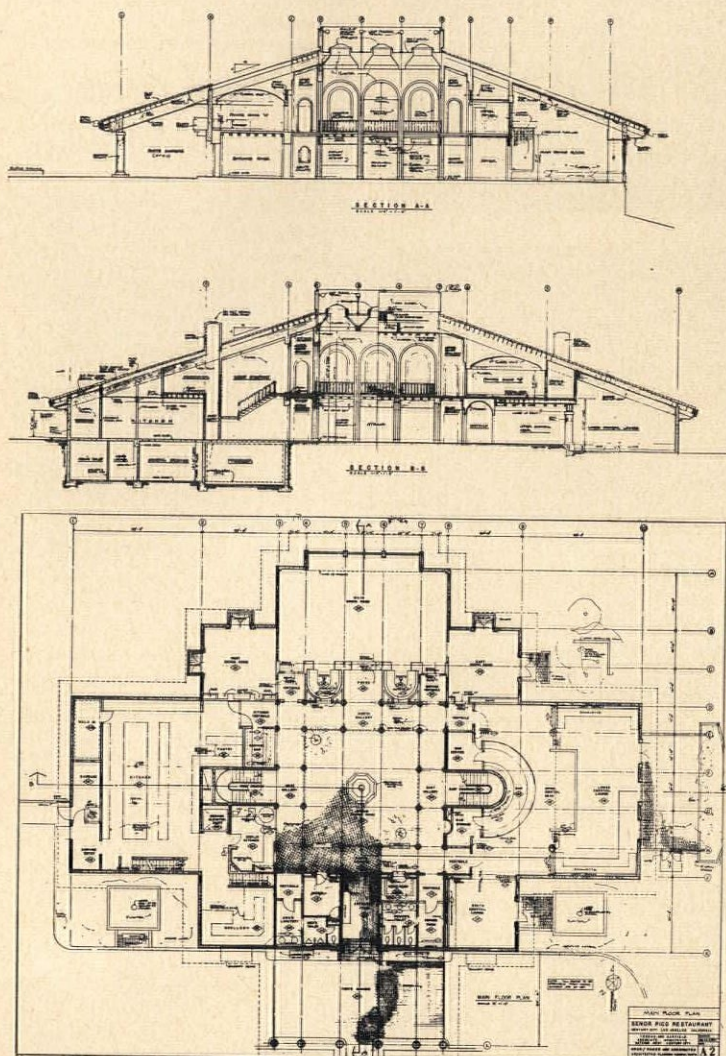
When the St. Louis Cardinals take the field on opening day, they will be the descendants of a host of baseball greats, performing in a contemporary showcase. Dizzy Dean was a Cardinal. Enos

(Country) Slaughter was a Cardinal who scored the winning run of the 1946 World Series by sprinting all the way home on a base hit as Boston's Johnny Pesky stood frozen in astonishment, unable to throw the ball.

Like most new stadia, Busch Memorial Stadium is circular in form. Writing in *Sports Illustrated* magazine, Robert Creamer pointed out: "What the old ball parks do have to their credit is personality. Think of Ebbets Field's right field wall, the high green barrier in left at Fenway, the too-short foul lines and too-long center field in the Polo Grounds, the jury-box bleachers in Braves Field. The new stadiums have none of these idiosyncracies. They are all shining and pretty and perfectly proportioned, like the girls in the cigarette ads. They all look exactly alike: 330' down the foul line, 410' to center. In a few years, a visiting player won't know what park he is in, unless he first stops to check the schedule. Everything will be neutral and fair and

antiseptic. Maybe even boring." One can't imagine Ed Stone's stadium being boring. The Cardinals won't let it be.

The Flavor Is Spanish



LOS ANGELES, CALIF. Nestled in the midst of the sparkling white, high-rise buildings that will compose Century City, will be a relatively small, low-rise restaurant with a sloping red tile roof. In a way, its architecture, a sort of eclectic neo-Spanish colonial, will be entirely appropriate. For it sits on a site that was once Spanish soil, in the midst of buildings that have completely rejected that past in favor of a gleaming contemporaneity. Señor Pico's restaurant is trading blatantly on the nostalgia of the past. The second in what may become a line of Señor Pico restaurants (the first is in San Francisco's Ghiaardelli Square), it is financed by Trader Vic, whose restaurants now dot the country. And it is the first of these to have its own building. The Trader conceived Señor Pico's as middle-priced restaurants, and unlike their higher-priced cousins,



they rely more on interior (and in this case exterior) structure for their mood, less on decoration—baubles, trinkets, fish nets, and anchors. As executed by San Francisco architects Chan/Rader & Associates, with Tendas & Garfield as associate architects, Century City's Señor Pico's will have a relatively simple façade of vertical form boards and sandblasted concrete beneath the large, hover-

ing tile roof. Inside, the plan is cruciform. At the center of the cross will be a two-and-one-half story atrium dining court. Surrounding this, a two-story gallery provides vistas and circulation to kitchen, other dining areas, and service areas. To create the rich, warm atmosphere that has become the Trader's trademark, the

architects will rely on hand-craft glazed clay tiles in many colors and patterns, carpeting, wooden beams, textured plaster walls, decorated twig ceilings, carpets, paintings, and decorative lighting fixtures.

Currently in working-drawing stage, the building will go out for bids in about two months.

Jerry Lewis to Play Architect on Broadway

NEW YORK, N.Y. As we go to press, news reaches us from the theatrical world that Jerry Lewis may play an architect in a Broadway comedy this fall. If negotiations are completed satisfactorily, Lewis will open in October in *The Hero of the Whole World*, in which he plays a Long Island archi-

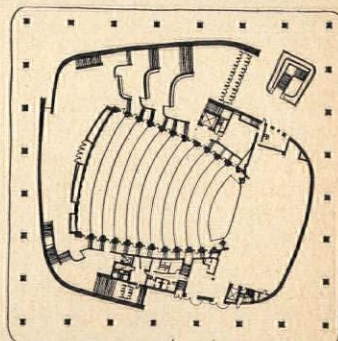
tect with five wives, each of whom is in charge of a different domestic duty. According to P/A's sources, Lewis will be the sole backer of the Mac Benoff comedy, which is expected to be capitalized at \$140,000. Only on Broadway would this be enough to support five wives.

Theater-in-the-Drum



HOUSTON, TEX. Houston is going in for culture the way it goes after oil: big. Shown above is the Caudill, Rowlett & Scott-designed Jesse H. Jones Hall for the Performing Arts, which will be the first building completed in Houston's \$40-million Civic Center Complex. Houston, which has the world's largest domed stadium, three major museums, three year-round theaters, four ballet organizations, and seven chamber music groups, will use the \$6,600,000 hall (which will house the city's largest stage) as the permanent home for the Houston Symphony Orchestra, the Houston Grand Opera Association, and the Houston Ballet Foundation.

Architects Caudill, Rowlett & Scott have designed a hall which, with visual and acoustical adjustments, will be suitable for each of the performing arts. The hall will accommodate a maximum audience of 3001, with alternative capacities of



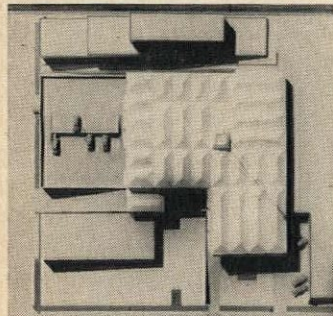
2400, 2000, and 1800. Ceiling panels can be lowered electronically to the balcony-rail level for the first seating change (3001 to 2400). For 2000, the mezzanine area will also be sealed in with panels. The minimum number of seats can be obtained by cutting off the last five rows of the orchestra floor.

As for its unusual and questionable 85'-high, travertine, drum-in-a-box form, the architects maintain that it was an outcome of the nature of the site. Sitting on a full city block,

the site of the former City Auditorium, the hall will be accessible from all sides, and the curvilinear shape was thought to be more conducive to movement around the building. The contrast between the straight lines of the walk-through colonnaded lobby (called in Texanese "The Texas Porch") and the curves of the drum enclosing the theater proper, were thought to add an element of visual excitement.

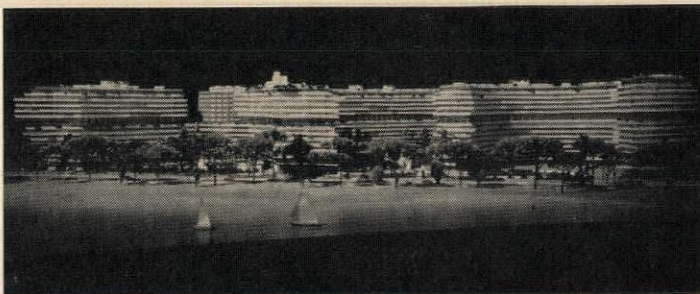
The hall is scheduled for an October 2nd opening.

Station KGW Coming Through Clear, If Not Loud



PORTLAND, ORE. The KGW Radio and Television Building in this city broadcasts from the street without static. The two-story building, designed by Fred Bassetti & Company of Seattle for the Bullitt Foundation, is the result of that growing phenomenon—the client who cares. The Bullitt Foundation requested that the building reflect its business ethic: "The pursuit of ideals and the fulfillment of responsibilities." For once, these high thoughts are not hand-stitched into a parlor-chair pillow: The architect has built them of concrete and brick. With an exterior of reinforced concrete and $\frac{3}{4}$ " brick tile (laid vertically to distinguish it from standard brick), the building makes us want to see more radio and television stations—building instead of talking.

Wondering Whillakers! Washington Watergate!



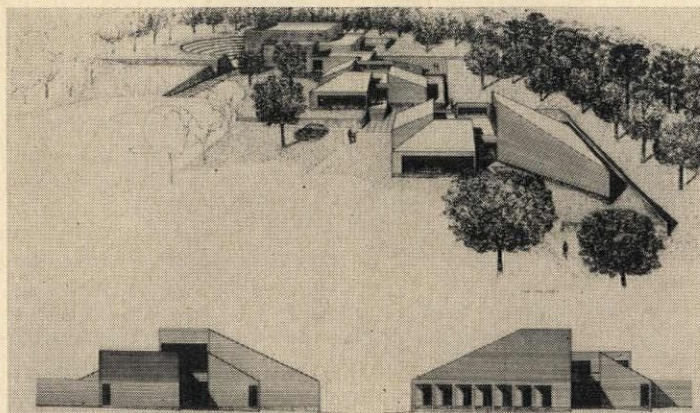
Photos: J. Alexander



WASHINGTON, D.C. Watergate East, the first of five buildings in a multipurpose \$44-million community (model shown above) unfolds like a mud worm in Foggy Bottom by the Potomac. Designed by Luigi Moretti of Rome and Milton Fischer of the Washington firm of Corning, Moore, Elmore & Fischer, Watergate, by the time it is completed in 1968, will have three cooperative apartment buildings (the 13-story Watergate East, with 240 apartments and 167 differ-

ent floor plans, is the first), a hotel and shopping mall—all great curvacious hulks. An underground network of roads will handle all traffic. Only the office tower will pay homage to the straight line (no doubt because of its business image). For prices ranging from \$30,000 to \$300,000, apartments will offer tenants a view of the Potomac, acres of flora, at least one marble-topped lavatory in each apartment—and just about any other luxury you can name.

Quiet Building for the Arts



WEST NYACK, N.Y. The Rockland Foundation (the 20-year-old Rockland County guild for instruction in and exhibition of the arts) has announced the winner of its competition for a design of its new home on a

semirural, 10-acre site. John Way, Jr., 1960 graduate of the Cornell School of Architecture, and resident of New York City, was judged winner by jury members Georgio Cavaglieri, Lo-Yi Chan, James M. Fitch,

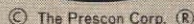
Paul Rivet, and Charles H. Warner, Jr. Way has worked with Marcel Breuer, I.M. Pei, and is presently associated with Percival Goodman. The Rockland Foundation plans to start building immediately.

Landmark Becomes Home of AIA Chapter

ST. LOUIS, MO. In a move as striking in its wisdom as in its appropriateness, the St. Louis Chapter of the AIA set up offices this winter in the Wainwright Building. Completed in 1892, the Wainwright Building was what Chapter president Angelo G. Corrubia calls "the first satisfactory expression of a skyscraper," and, as such, it set a structural precedent that is still the bulwark of modern skyscraper construction. Frank Lloyd Wright, who was a young assistant in the Chicago offices of Adler & Sullivan when the building was conceived, told this story at a lecture at Princeton University:

"Our peculiar [American] invention, the skyscraper, began on our soil when Louis H. Sullivan came through the door that connected my little cubicle with his room in the Auditorium Tower in Chicago. He pushed a drawing board with a stretch of manila paper on it over onto my drafting table and, without a word, went back into his room and closed the door. There it was, in delicately-penciled elevation. It was the Wainwright Building in St. Louis, the first human expression of a tall steel building as architecture."

Ellis Wainwright, who commissioned the building, found it an almost instant financial success, for its 250 offices were rented almost as soon as the building was completed. But for Wainwright, the success was sour. In 1891, with the building almost finished, his beautiful young wife, Charlotte, died, a blow from which Wainwright apparently never recovered. In his grief, Wainwright once again turned to Sullivan and asked him to design a mausoleum in his wife's memory. The Wainwright mausoleum in St. Louis's Bellefontaine Cemetery is still a showplace—a significant Sullivan structure. After his wife's death, Wainwright was an unhappy man. He became involved in a sensational stock scandal. Indicted,



THE PRESCON CORP.: 502 CORPUS CHRISTI STATE NATIONAL BUILDING — CORPUS CHRISTI, TEXAS 78401

P/A News Report 65

he fled to Europe before he could be tried, living there in self-imposed exile for 10 years. When he returned to the U.S., the old charges were dropped, but Wainwright was never the same. He sought release in a life of gaiety and abandon. Tiring of that, he became a recluse. In his final years, he lived quietly, a man of mystery so remote that even the maids who cleaned his hotel apartment were never permitted to see his face. He died in 1924, at the age of 74.

The building that bears his name has a base of Missouri red granite. Its next two levels are Indiana red sandstone. From the third to the ninth story, the façade is red-pressed brick with ornamental terracotta trimmings on the pilasters and in panels between window lintels and sills. Above the ninth story, the facing is ornamental terra-cotta frieze with an elaborate foliage design, interspersed by small round windows.

The St. Louis Chapter, AIA, will help provide information on the building to visitors. The Chapter is to be congratulated for making a move other Chapters would do well to emulate.

Awards

The Ford Foundation has awarded a \$1 million grant in support of the further excavation of the Agora, the civic center of ancient Athens that sits at the foot of the Acropolis. The grant was made to the **American School of Classical Studies** . . . **George Nelson**, founder and president of George Nelson & Co., industrial design consultants of New York City, has received the 1965 Alcoa Industrial Design Award for his "notable achievement in the imaginative and effective use of aluminum" in his designs for action office furniture manufactured by Herman Miller, Inc. . . . **Morley Baer**, West Coast photographer, won the 1966 AIA Architectural Photography Medal . . . **William Ballard**, architect, city planner, and chairman of New York City's Planning Commission, received the Woodrow Wilson Award from Princeton University . . . **Ludwig Mies van der Rohe** will be the first winner of the University of Virginia's Thomas Jefferson Memorial Foundation medal in

architecture . . . **William W. Eshbach** of Philadelphia has been named recipient of the Edward C. Kemper Award given annually by the AIA for "significant contribution to the Institute and to the profession of architecture" . . . **Seymour H. Knox**, past chairman of the New York State Council on the Arts and president since 1938 of the Buffalo Fine Arts Academy, was awarded New York's Architectural League's Michael Friedsam Medal in Industrial Art . . . **George Anselevicius**, **Roger Montgomery** and **Dolf Schnebli**, members of Washington University's architectural school, won the university's competition for the design of a new School of Law building and a Social Science Center. Judges for the competition were Thomas Eliot, chancellor of the university, G. Holmes Perkins, and Harry Weese.

Sullivan to Yamasaki



BUFFALO, N.Y. Architect Minoru Yamasaki, and the resident firm of Duane Lyman & Associates, have designed a 21-story tower for Buffalo's Manufacturers & Traders Trust Company. The model shows finned columns rising from the 35'-high lobby, which is fronted by

a 200'x75' landscaped plaza. The bank will occupy the first half of the \$15-million building and lease the remaining floors. On the twentieth floor, a restaurant will promise a view with every meal.

It is almost as if Yama took his plan, if not the expression of it, from Louis Sullivan, who 72 years ago, at age 39, graced Buffalo with one of the finest examples of office buildings in this country—the 13-story Guaranty Building.

Sullivan's thesis on the Guar-

anty appeared in *Lippincott's Magazine* in 1896. The building's internal functions, he commented, would determine its external forms . . . a ground floor for those businesses (banks) requiring access, light and space . . . and above this two-story base an indefinite string of offices, each like the other, in cellular form. "It must," he went on, "be every inch a proud and soaring thing, rising in sheer exultation that from bottom to top it is a unit without a single dissenting line."

Student Protest

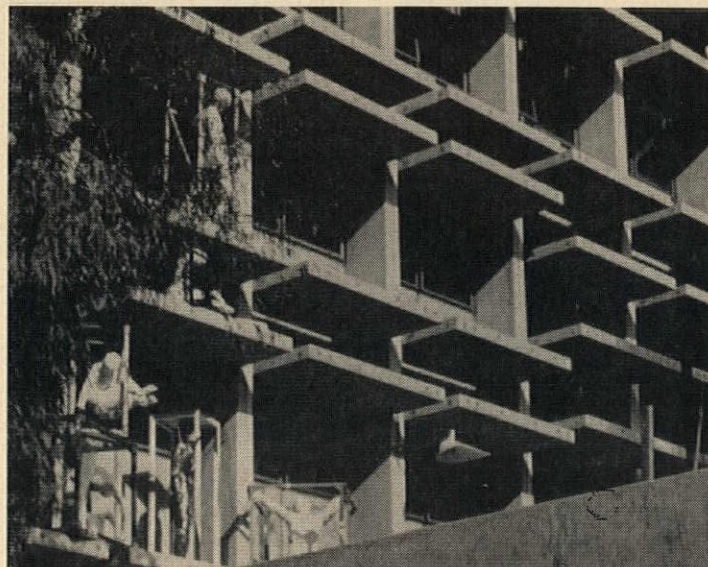
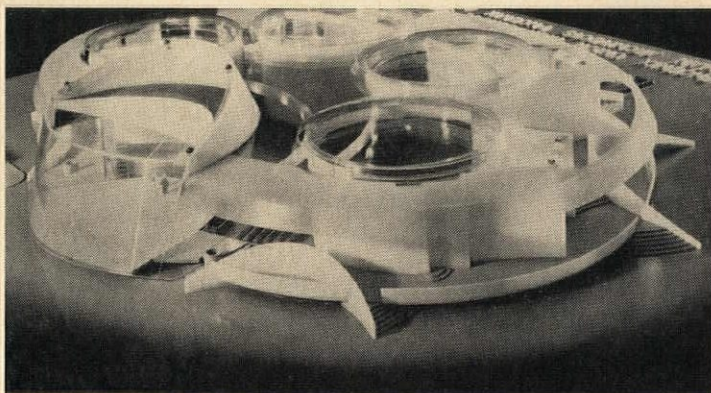


Photo: Ron Lundberg

BERKELEY, CALIF. Those outspoken Berkeley students can protest visually as well as vocally, it seems. On a recent visit to Wurster Hall, the new Environmental Design building at the University of California (see Neill Smith's critique, pp. 162-167, JANUARY 1966 P/A),

P/A's Senior Editor found that budding sculptors in the art department have livened the institution's brutalist façade with plaster bodies decked out in gaily painted bikinis. The effect is something like a feather boa on an old-maid school teacher.

Educational Circles

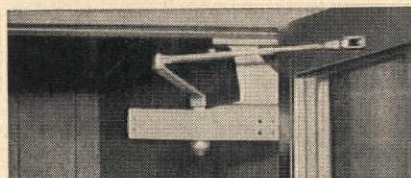


PHOENIX, ARIZ. They're going in circles in Phoenix. With the aid of a \$20,000 grant from the Ford Foundation, Phoenix architects Cartmell and Rossman designed what is called a "mul-

tiuse learning center." It is a series of classrooms, arranged in concentric circles, which can be converted into an auditorium at the push of a button. Built on turntables at the peri-

**YOU GET A
CLEAN
UNCLUTTERED
APPEARANCE
FOR YOUR DOORS...when you specify
Norton Top-Jamb Mounted Closers**

**instead of closers mounted
on corner brackets**



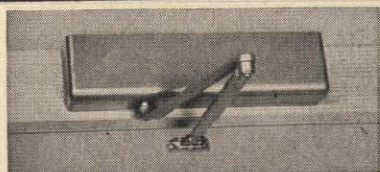
You can completely eliminate the unsightly interruption of a protruding corner bracket when you specify Norton top-jamb mounted closers. The lines of your door are clean and uncluttered. You have a better overall appearance.

With the choice of regular mounting, or top-jamb mounting, you can always be sure of mounting the closer on the side of the door you choose. This can be particularly important if you wish the door closers, no matter how attractive, to be out of view of the public. This means reception halls and building entrance areas have doors with no closers visible.

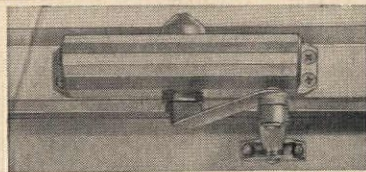
Closers mounted on the top jamb also offer better leverage than closers mounted on a corner-bracket. In many cases, a size smaller closer can be installed. This naturally results in an economy that can be sizeable in many cases.

CHOOSE CLOSER STYLE

You have two styles to choose with Norton Closers. You get the styling best suited to your architectural decor.



SERIES 7030—Narrow projection closer with covers: clear aluminum, bright brass, or dull bronze; primed for repainting.



SERIES 1600—Tri Style Closer with choice of 2 mounting methods: exposed mounting, or totally concealed mounting.

**FOR MORE INFORMATION,
CONTACT YOUR NORTON REPRESENTATIVE.**



NORTON® DOOR CLOSER DIVISION
372 Meyer Road, Bensenville, Illinois, 60106

On Readers' Service Card, circle No. 394

phery of a fixed 600-seat auditorium with a stage, the classrooms revolve separately, opening onto the main auditorium and each adding in turn their 200 seats to it. According to the Educational Facilities Laboratory, a branch of the Ford Foundation, a lecture-hall/classroom complex with the same seating capacity, separated by movable partitions, would cost about \$700,000. The learning center could be put up for about \$600,000; moreover, it would be about 25 per cent more efficient. With this arrangement, one teacher could teach 200, 400, 600, or 1400 students.

If funds become available, high schools in the Phoenix Union High School System will build a center based on the model.

CALENDAR

On April 26-28, the national conference on **Religious Architecture** will be held at the Sheraton-Palace Hotel in San Francisco. This year's theme will be "An End to False Witness." . . . The **Consulting Engineers Council** will hold its annual convention at the Civic Center Assembly Hall, Tulsa, Okla., from May 4-6 . . . A conference on "**The Future of Architecture**," from May 13 to 14, will officially open the doors to the Boston Architectural Center's new building. For further information, write J. Robert Wolf, Boston Architectural Center, 338 Newbury Street, Boston, Mass. . . . The **Building Research Institute** will hold its spring conference at the Statler Hilton Hotel in Washington, from May 10 to 12 . . . There will be an architectural exhibition of **general hospitals and service facilities** at the Middle Atlantic Hospital Assembly May 17 to 19, Convention Hall, Atlantic City, N.J. . . . From June 13 to 17, Wayne State University, Detroit, Mich., will hold a seminar on the **Flammability Characteristics of Polymeric Materials**, from June 13-17. Additional information may be obtained from Conference Chairman, Department of Chemical Engineering, Wayne State University, 701 West Warren, Detroit, Mich. . . . The **World Prestressing Conference** will be held June 11-18 in Paris . . . Pratt Institute will offer a seminar from June

20-25 on **Space Planning and Business Interiors**. For further information write: Director, Division of Continuing Professional Studies, Pratt Institute, Brooklyn, N.Y. 11205 . . . The **sources and resources of the 20th Century** will be the subject of the International Design Conference in Aspen Colo., from June 19-24. Additional information is available from International Design Conference, P.O. Box 664, Aspen, Colo. . . . On June 20-24, a second seminar in the **Use of Plastics in Building and Construction** will be held at Wayne State University . . . The **National Council of Instructors in Landscape Architecture** will hold its annual meeting June 29-July 2 at the University of Wisconsin at Madison . . . Dr. Nathan M. Pusey, president of Harvard University, will give the second annual Purves Memorial Lecture at the **AIA Convention** in Denver, Colo. The convention will run from June 26-July 1, and will have as its theme "Technology, Environment and Man" . . . The Athens Center of Ekistics has organized an international seminar on **Ekistics and the Future of Human Settlements** to be held in Athens from July 4-15. For information and application forms write: Dr. D. Iatridis, Director, International Seminar on Ekistics, Athens Center of Ekistics, 24, Strat. Syndesmou St., Athens 136, Greece . . . On July 5-9, Stanford University will hold a **secondary school planning seminar**. Information is available from Coordinator, Secondary School Planning Institute, School Planning Laboratory, School of Education, Stanford University, Stanford, Calif.

Adventure in Space

CAPE KENNEDY, FLA. Plunged into the middle of the Space Age by a quirk of geography, catalyzed by Governmental group decision, Cape Canaveral, as this Florida coastal community was once officially known, has become synonymous with space exploration. Never one to pass up the excitement, especially if the weather is good, the Hilton Hotel Corporation plans to manage a 200-room hotel here, between the Atlantic Ocean and the Banana River. According to informed sources, "architectural experts" of Shu-

ford Mills, Inc., a Hickory group, and Hilton Hotels are (North Carolina) development working on plans.

Obata Designs Office Tower Near Gateway Arch

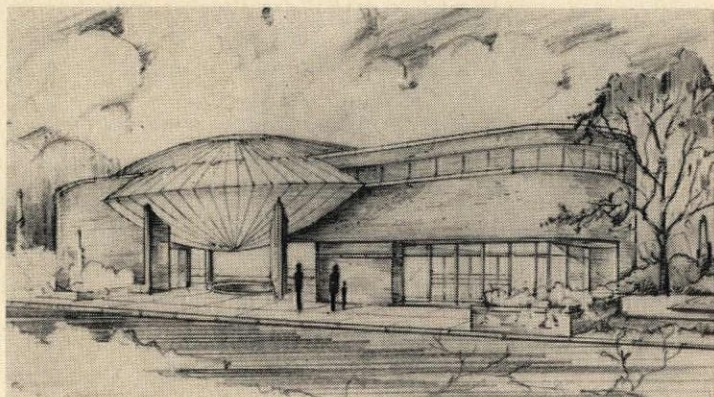


St. Louis, Mo. Ground was broken last month for a 20-story office building on the St. Louis riverfront between Saarinen's Gateway Arch and Stone's Busch Memorial Stadium. Designed by Gyo Obata of Hellmuth, Obata & Kassabaum, the building is a joint development effort by subsidiaries of the Columbia Broadcasting System (KMOX-TV and KMOX radio) and Transurban Redevelopment Corporation. Obata's design shows a 17-story tower rising from the north end of a three-level base. The roof of the base will be a promenade deck. Cantilevered

around the glass walls of the tower will be continuous balconies whose beige aggregate cast-stone facing will offer sun protection and reiterate the cast-stone facing of the base. Each floor will encompass 10,000 sq ft on 5' modules. The tower's placement insures permanently open views on three sides: These take in the river and the arch, the Old Courthouse, and the Mall entrance to the Jefferson National Expansion Memorial; and, to the south, Busch Memorial Stadium.

Charles Luckman Associates are Associated Architects.

A Poem Lovely As A Pin-Cushion



RACINE, WISC. "A good building is the greatest of poems when it is organic architecture," said Frank Lloyd Wright. Perhaps the Johnson Wax Company was thinking of this when they called their movie theater at the New York World's Fair the Golden Rondelle, for a ron-

delle, besides being a circular object (the shape of the theater), is also, of course, a form of poem. Inside the theater, they ran almost continuous performances of Francis Thompson's and Alexander Hammid's award winning movie, *To Be Alive!* H.F. Johnson, chairman



Why specify —

Jennite J-16 for Asphalt Pavement Protection?

New look, longer life for pavements

It is significant that more architects and engineers specify Jennite J-16 than all other "pavement sealers" combined.

The reason? 28 years of field experience under all climatic conditions has proved **they can depend on Jennite J-16 to provide longer-lasting, better-looking pavements.**

You daily observe how water, freezing and thawing, oil, gasoline and oxidation damage unprotected asphalt pavement surfaces. This is particularly true of those that do not receive a full pattern of continuous rolling traffic—parking lots, drives, play areas, airfields, etc. Jennite J-16, applied as a protective coating, prevents this damage and **makes pavements last longer.**

At the same time, Jennite J-16 improves pavement appearance — retains a "new" look. Building design features and landscaping are accentuated by the slate black color. **Jennite J-16 makes the entire site look better.** Jennited pavements are free from hazardous loose stones. Because the surface voids are sealed, they are easier to clean.

Big difference in results!

Yes, there are other products that offer similar promise. But the Jennite J-16 concept of pavement protection was pioneered back in 1938 and broad application experience has continually improved its unsurpassed field performance.

Jennite J-16 offers you these important advantages:

More weather resistance. As it cures, Jennite J-16 forms a tough protective coating. This possesses far greater resistance to water and oxidation than unsealed asphalt. Inert mineral content provides sun and heat resistance 25% greater than products which merely meet federal specifications for coal tar pitch emulsions.

More resistance to oil and gasoline. Laboratory tests prove Jennite J-16 has at least 10% greater resistance to solvating action of petroleum oil and gasoline than ordinary federal specification pitch emulsions.

More resistance to wear. A high solids emulsion, Jennite J-16 gives 10% more cured thickness than required by federal specifications. High-melting-point pitch and mineral fortification add to toughness. Even greater wear resistance can be provided by special application systems designed to meet individual job requirements.

More consistent product performance. Precision control of high volume production maintains uniform quality. Users benefit by field experience from Alaska to the Congo.

Coast-to-coast availability

More assurance of proper application. Authorized bulk distributors in principal cities have personnel trained in modern application procedures, and specially-designed equipment for efficient Jenniting.

No equal for dependability

Jennite J-16 may cost a little more initially than many "just like" products offered for pavement protection. But, on the basis of superior performance, it is the least expensive. **It costs less per year of service.**

Jennite J-16 has no equal for dependability. For up-to-date product and application specifications, write or phone Maintenance Inc., Wooster, Ohio.



MAINTENANCE[®] INC.
Cable Address—Minco

WOOSTER OHIO 44691

See our Catalog in Sweets.

6128-A

**This is one thing
Hetron[®]-based panels
don't do.**



They don't shatter. Even under attack by vandals, hail or high winds. Hetron panels prevent the broken window problem, reduce maintenance and replacement costs.

But that's not all Hetron panels don't do.

They don't spread a fire. They are qualified to carry the Factory Mutual seal of approval and the U/L label.

They don't admit glaring light. Since they are translucent, they diffuse the light, help eliminate shadows.

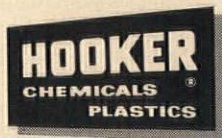
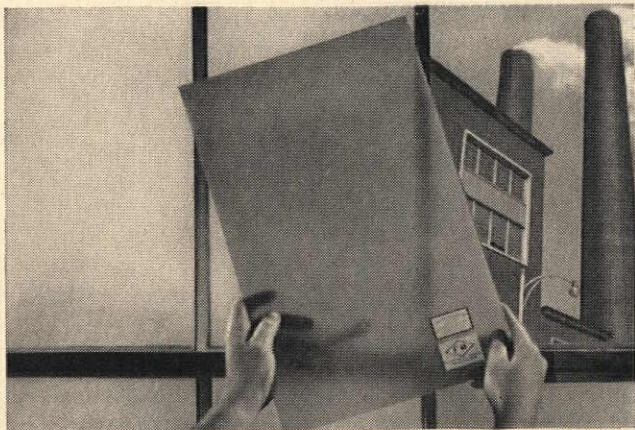
They don't corrode. They with-

stand severe chemical environments.

They *do* shrug off weather.

And they *do* install easily and economically because of their light weight and high strength. No extra framing is required when used on standard purlin spacings.

We make the Hetron. Fabricators supply the panels. Large or small, corrugated or flat, for replacement or new construction. We'll be glad to provide detailed information. Just write Durez® Plastics, 7704 Walck Road, North Tonawanda, N.Y. 14212.



DUREZ PLASTICS DIVISION

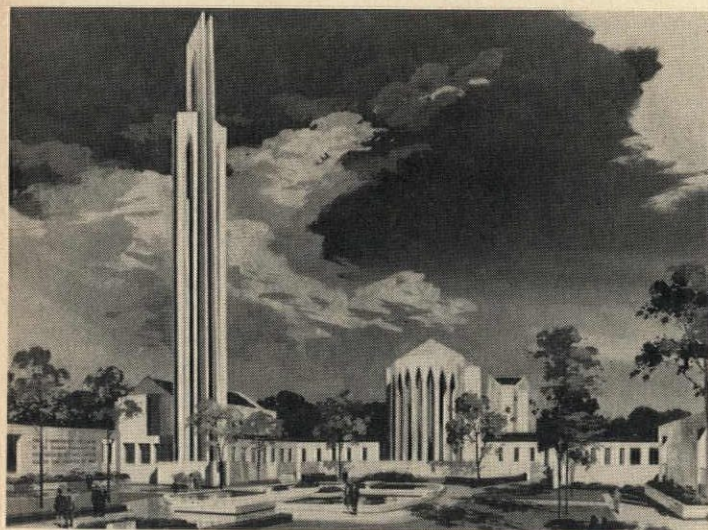
On Readers' Service Card, circle No. 470

of Johnson Wax, had gone to them and wisely told them only to "make a film that would adhere to the World's Fair theme of 'Peace Through Understanding.'" The resulting film was compellingly beautiful. Now plans are underway to move the film and the Golden Rondelle to Johnson Wax headquarters here.

Instead of the distinctly nonorganic, soaring, 90' concrete-petal-topped columns that supported the theater at intermediate level at the World's

Fair, it will be supported on four pylon-type columns. And to give it some compatibility with the Wright-designed Johnson's headquarters, Taliesin Associates have designed two auxiliary buildings, with curved red brick walls and horizontal bands of glass, which will abut it. Although the Golden Rondelle looks more like a water-filled pin-cushion than a poem, its auxiliary buildings only make it look more awkward. One can almost hear the master thundering in his wrath.

It All Started in a Carpenter's Shop...



WASHINGTON, D.C. The National Presbyterian Church has come a long way. In 1793, its services were held in a carpenter's shop on what are now White House grounds. In the summer of 1969, the same church will move into a \$4,100,000, 14.4-acre limestone and marble complex of "contemporary Gothic" architecture. Included in the complex will be a sunken garden—complete with a fountain sculpted in the shape of the church seal—a fellowship hall for feeding 650 or lecturing 760, a 173' high bell tower, a

chapel seating 200, and a church proper seating 1218. Historic items from its previous home will also be preserved and installed in the new building (including pews used by Presidents Jackson, Polk, Pierce, Buchanan, Cleveland, Grant, and Eisenhower).

This fad for world's fair architecture in churches, is, we hope, a passing one. It is as if all those people who visited the Billy Graham Pavilion at the New York World's Fair went home and told their pastors: "We want something like that."

EAVESDROPPINGS

"Irrespective of the quality of the food [in American hot dog parlors], this kind of interior can be a remarkable performance on the part of its designer. A particular environment or atmosphere has been engineered with a skill, and a degree of success, comparable to the way in which atmospheres of ecstatic piety were engineered in Roman baroque churches, like Sant' Andrea al Quirinale or

the Cornaro Chapel. But if these works of Bernini are architecture, is the restaurant? The problem is one that must increasingly concern any student of the American scene, because that scene is increasingly composed of buildings—motel, supermarkets, bowling alleys, filling stations, hamburger stands, even private houses—conceived in this mode of emotional engineering. Yet

if one takes the problem to U.S. architectural critics and journalists their normal response is the same as to American food, and they start to talk about Le Corbusier or Gropius instead." *Reyner Banham, writing in Landscape, Winter 1965-1966.*

"[Louis Sullivan's] contemporaries thought his ornament saved his off-beat solutions from cold and incomprehensible unfamiliarity. His heirs of the 1930's rejected it as traditional trimming and preferred to admire the bare upper stories of his buildings. Today we return to it with gratitude for its undeniable sensuous beauty, seeing it as the catalyst between structure and expression that made Sullivan's famous dictum 'form follows function' neither the sterile nor the limited doctrine of its later interpreters." *Ada Louise Huxtable, The New York Times, January 27, 1966.*

"The absolute essential beginning point before any city can be made non-obsolescent is the development of a program that is going to do the job. A total, complete, comprehensive program that has: (a) a plan of what that city's metropolitan area is going to be; and (b) a schedule for executing the plan that says: We believe the plan; here is the financial backup for the plan; this is what it will cost to eliminate slums; this is what it will cost to develop a transit system and an expressway system; this is what it will cost to develop the neighborhoods; these are the values that will be created; this is the assessable phase; here are the revenues; this is the relationship between the revenues and the capital investment. It is economically viable; we will do it and here is the schedule for doing it." *James Rouse, speaking at the First International Conference on Urban Transportation.*

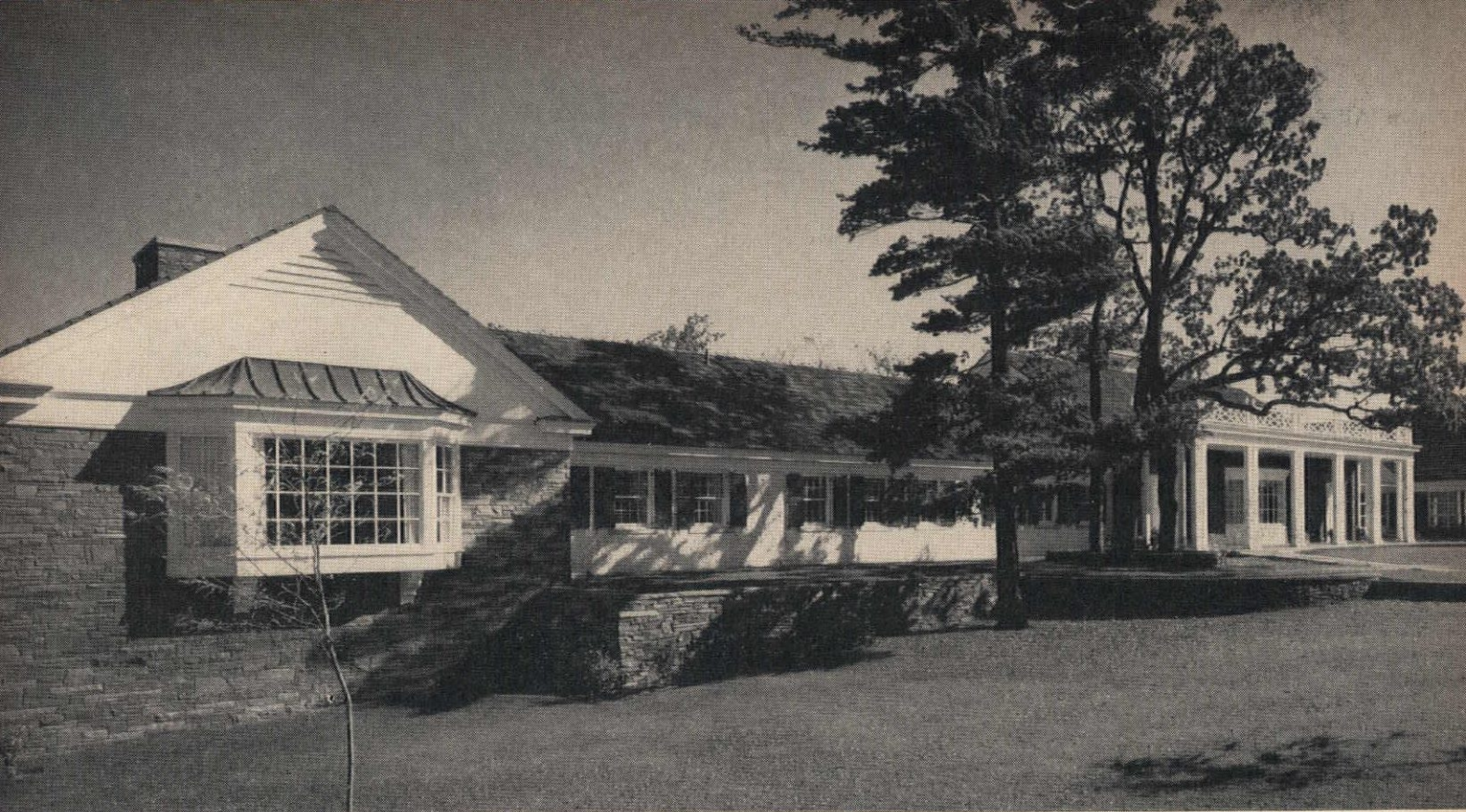
Personalities

Sim Van der Ryn was *not* made a permanent member of the University of Pennsylvania faculty, as announced in FEBRUARY 1966 P/A. He was Visiting Professor of Civic Design at that University last fall but is presently fully entrenched at the University of California's (Berkeley) Department of Architecture. Apologies. . . . **Glen**

Paulsen is the new president of Cranbrook Academy of Art, Bloomfield Hills, Mich. He will continue to head the Art Academy's Department of Architecture . . . **Keith Mcpheeters**, 10 years a faculty member at the University of Arkansas, will head Rensselaer Polytechnic Institute's school of architecture. **Felix Candela** will be the second Jefferson Professor in Architecture at the University of Virginia, succeeding Pietro Beluschi this spring . . . **William H. Liskamm**, a principal in the San Francisco firm of Okamoto/Liskamm, Planners and Architects, will become vice-chairman of the University of California, Berkeley's Department of Architecture . . . **Dennis W. Madden** has been elected president of the Maryland Council of Architects. With the words ". . . the Franco-American studio will bring American architectural techniques and French instruction closer together," Minister of Culture André Malraux has launched a Franco-American architectural studio at the Paris Fine Arts Studio, to be directed by the American architect, **Paul Nelson** . . . **Dr. Pietro Belluschi**, former dean of the School of Architecture at MIT, has been named the first Thomas Jefferson Memorial Foundation Professor in Architecture at the University of Virginia, a position he will hold for the first half of the spring semester . . . **Robert A. Little** has been made president of the Cleveland Chapter, AIA . . . The Institute of North American Studies in Spain has recently given its John Fitzgerald Kennedy Award to **Edward Durrell Stone** . . . Yale University has made **Vincent J. Scully, Jr.**, the first John Trumbull Professor of the History of Art . . . Architect **Jose Luis Sert** has become a member of the National Institute of Arts and Letters, where **Philip Johnson** is serving a second term as a vice-president.

Competitions

All those wishing to enter the American Institute of Steel Construction's annual architectural awards of excellence program must do so by May 1. All steel-framed buildings in the U.S. that were completed



ALBANY COUNTRY CLUB, Voorheesville, N.Y. Architect: W. PARKER DODGE ASSOCIATES, Rensselaer, N.Y. General Contractor: JOHN P. SEWELL, INC., Albany, N.Y. Ready-Mix Concrete: PORT CONCRETE CORP., Albany, N.Y. Masonry Cement Dealer: PETER McCABE, INC., Albany, N.Y.

Exclusive Country Club Elects Lone Star Masonry Cement for Beauty and Durability

The Albany Country Club is one of the oldest in the country. And now, with a magnificent new \$1-million-plus clubhouse, it is one of the most luxurious.

The clubhouse, a modified colonial design, is 310 feet long with 40,000 square feet of usable space. The architect used concrete, brick, stone and wood to achieve an unusually attractive combination of contempo-

rary and traditional styles.

The exterior walls are of stone and brick, and the interior walls of masonry block. The roof is constructed of precast concrete plank and tile, adding a rustic effect in the country setting. In all, more than 2,000 cubic yards of concrete made with Lone Star Portland Cement were used in the floors and walls.

Lone Star Masonry Cement, to which the mason only has to add sand and water to produce a stronger, more uniform mortar, was used exclusively in laying up all masonry in this beautiful clubhouse.



Concrete combined with Pennsylvania Bluestone and rough red brick painted white are joined in the new clubhouse to achieve a look of luxury and dignity.



**LONE STAR
CEMENT
CORPORATION**

100 Park Avenue, New York 10017

as of January 1, 1965, are eligible. Details are available from AISC, 101 Park Ave., New York, N.Y. 10017.

Made in America, Bought in Germany

COLOGNE, W. GERMANY. U.S. furniture manufacturers visited this city two months ago and did their part to reverse the balance of payments flow. For the first time, American wares were shown at the International Furniture Fair in Cologne; and the tester beds, the La-Z-Boy chairs, and carriage lamps stole the show.

U.S. exhibitors report that floor orders totaled \$800,000 and that expected sales during the year will exceed \$3,500,000. With housing starts in the next three years expected to total \$10 billion in Germany alone, the American estimate would seem to be a sure thing.

The appeal of the American styles—notably neo-Colonial—was certainly not in their prices, which, with mark-ups, shipping, taxes and duty, jump a good third over domestic prices. What the Europeans saw was a “difference”—the lady from Grand Rapids—not as old as Louis XV, nor as gracious as Queen Anne, but ever present.

Roche to Design Wesleyan Arts Center

MIDDLETOWN, CONN. Wesleyan will get a new Creative Arts Center that will house 9000 sq ft of exhibition area, an art, music, and theatre library, a 400-seat theatre, a 500 seat recital hall, and an outdoor arena. Kevin Roche of Eero Saarinen & Associates hopes to complete the \$5 million project by early 1968.

Expressway Is Out

NEW YORK, N.Y. “The city is for people, not for cars,” proclaimed New York’s Deputy Mayor Robert Price, reiterating a long-forgotten truth. With it, he sounded the death knell for the Lower Manhattan Expressway, a proposed eight-lane highway that was to knife 2½ miles across Manhattan, connecting the Holland Tunnel with the Williamsburg and Manhattan Bridges. “The

project is out, as far as the Lindsay administration is concerned,” said Price, and his statement may mark a turning point for this country’s most populous city. Under fire from critics since it was first proposed 25 years ago, the expressway, its detractors pointed out, would only bring more cars into an already auto-clogged urban area. What is more, its construction would have meant the destruction of the several cast-iron-façade office buildings, among them the Haughwout Building, which was made a landmark by New York City in January (see p. 62, March 1966 P/A).

The Kiosk & the Curator

NEW YORK, N.Y. During his recent campaign for the mayoralty, John V. Lindsay released a series of “position papers” on various city problems, among them one called *Parks and Recreation*, prepared by Thomas P.F. Hoving, who has since become Parks Commissioner. Referring to Huntington Hartford’s threatened café in Central Park, Hoving noted, “A certain type of restaurant is needed in Central Park, but not necessarily the complex structure Mr. Hartford envisioned. In many areas it is impossible to obtain as much as a hot dog. I would recommend a series of colorful restaurant kiosks surrounded by small tables and chairs. . .

“In order to prevent the thoughtless and tasteless alteration or destruction of some of the universally good original features of the Olmsted design, I propose the appointment of a Curator of Central Park. This would be an individual who knows intimately the history of the park and who would be able to give professional advice on the repair and reconstruction of its original elements. . .

“The Curator would also study in detail and gather together all the sketches, plans, watercolors, and charts of the original plan of Central Park, in order to have exact reconstructions made of certain of the now missing elements, in the same accurate manner that Colonial Williamsburg has been brought to life.”

Lindsay and Hoving are fast fulfilling these campaign pledges. The architectural antiquary Henry Hope Reed, Jr.,

was appointed Curator of Central Park, and if there was ever anyone who would delight in bringing back past forms, it is he.

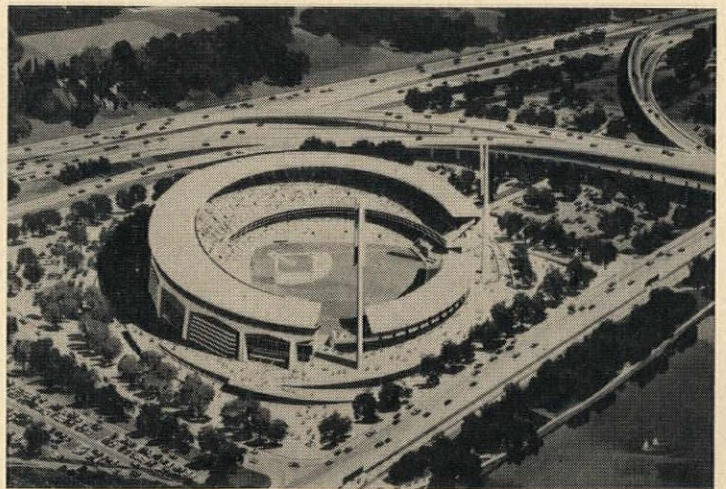
In February, architects in the New York metropolitan area were invited to compete for a \$2000 first prize and assurance of the commission for a prototype refreshment kiosk for the park. Horn & Hardart, the automat people, have put up the prize money, as well as up to \$12,000 for construction costs, and will presumably be concessionaires. The program is being written by New York Chapter, AIA, which will select the jury, together with Horn & Hardart and the Parks Department (which presumably means H.H. Reed).

On the face of it, reaching out to the architectural community for its ideas is a refreshing departure for New York City, whose history of design by department is unutterably dismal. During the suffocating regimes of Robert Moses and Newbold Morris, the Parks Department was characterized by an unwritten policy of no design, leaving it to the control of highway engineers, sewer experts, and maintenance men.

The new emphasis on good

planning and design is gratifying, but it is to be hoped that historicity will not be confused with the continuation of a fine Olmstedian tradition. The previous regimes delighted in accepting not only the notorious Hartford café, but also things that actually got built: the Snow-Whitish Lehman Children’s Zoo and the new cuckoo clock in the main zoo, for instance. Lindsay and Hoving, in their determination to respect the Olmsted design, are on firm ground, and they are correct in assuming that respect does not prohibit fulfilling some present-day needs, as the kiosks probably will. But the dangerous influence of a curator exclusively oriented toward the architectural past, and the stated aim of having “exact reconstructions made of certain of the now missing original elements, in the same accurate manner that Colonial Williamsburg has been brought to life”, should be matters of intense concern to architects. The outcome of this competition will deserve serious scrutiny, for it will indicate to what extent good campaign intentions survive the fires of actual execution, and hint at the city’s future architectural attitudes.

New Home for the Pirates



PITTSBURGH, PA. Since 1909, Forbes Field has been the home of the Pittsburgh Pirates. Forbes was the British general, who, with young George Washington acting as scout, took over a deserted French stronghold at the confluence of the Allegheny and Monongahela Rivers, renaming it Fort Pitt. Forbes Field holds only 35,000 spectators—a mere handful in terms of today’s soaring inter-

est in the national pastime.

Now Deeter & Ritchey-Beker-Osborne are the architects-engineers for a new circular Pittsburgh Stadium that will accommodate 52,000 for both baseball and football. The Stadium Authority of the City of Pittsburgh is building it at an estimated cost of \$25 million. An April 1968 completion date is being aimed at by Mauchly Associates, a firm using a com-



Architects: Shaw, Metz and Associates, Chicago, Illinois. Contractors: B. G. Davis Company, Dayton, Ohio.

Bayley Windows hold up the bank

Bayley aluminum windows support the architects' imaginative design, and help make the Springfield Bank a bold landmark in downtown Springfield, Ohio. To achieve this striking treatment Bayley engineers worked closely with the architects to create a special curtain wall. Marble sun screens control light and add textural interest.

Bayley service means joining your creative team, applying sound engineering, delivering steel or aluminum windows on time, and sticking up for high quality. The William Bayley Company, Springfield, Ohio.

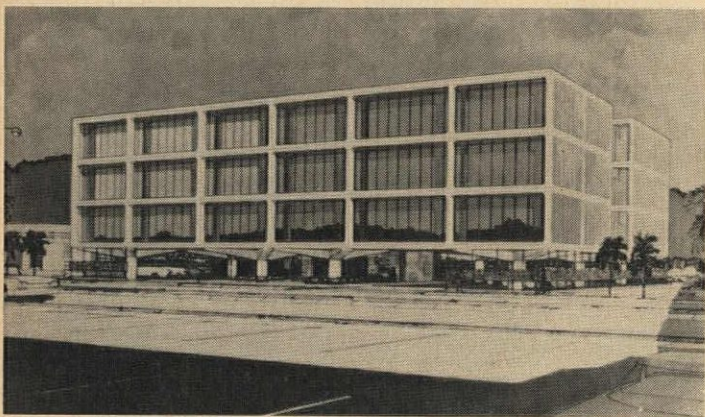


puter to schedule and control construction. Like many new stadia, it will have a section of center-field seats that move on tracks to convert the baseball field into a football field.

When they move into their new computer-planned home, one hopes the Pirates can take some of their old time glory with them. They played their first game on April 30, 1887 (before that, the team was known as the Alleghenys), beating Chicago 6-2. Playing center field that day for Chicago was Billy Sunday, who

was later pirated away to play in Pittsburgh, and who, still later, turned from belting baseballs to belting out sermons. Probably the most glorious day at Forbes Field was October 1, 1927, when the Pirates clinched the National League pennant on the next-to-last day of the season with a 9-6 win over Cincinnati. Not for 33 years did a pennant come to Pittsburgh again. Pittsburgh Stadium will become a proving ground for the descendants of Honus Wagner, "Pie" Traynor, and Ralph Kiner.

COMMERCIAL CONDOMINIUM



CORAL GABLES, FLA. Although it has been around for some time, the condominium concept of ownership has been slow to take hold. It makes a purchaser direct owner of a piece of a building, an office, or an apartment, rather than an owner of shares in a corporation, which in turn owns the building, as is the case in cooperative arrangements. In recent years, state laws have clarified condominium legality and the arrangement has proliferated. Most usually found in apartment houses, where condominium purchasers have the advantage of recourse to mortgage loans, condominiums are now cropping up more and more frequently in commercial buildings.

According to developers of the First Professional Condominium shown here, the build-

ing is thought to be the first condominium for commercial use in the South.

Dade General Savings and Loan of Miami has guaranteed \$500,000 in first mortgage monies to any qualified purchasers.

Designed by Houston and Albury of Coral Gables, the 37,000-sq-ft, four-story building is of reinforced concrete. Windows are recessed behind a rectangular grid frame. At street level is 12,500 sq ft of covered parking area, made possible by positioning the building on story-high concrete pillars topped by radial arms. Both north and south façades have light wells cut into them, running the height of the building.

Construction is now underway, with occupancy planned for the fall.

Collaboration Report Approval

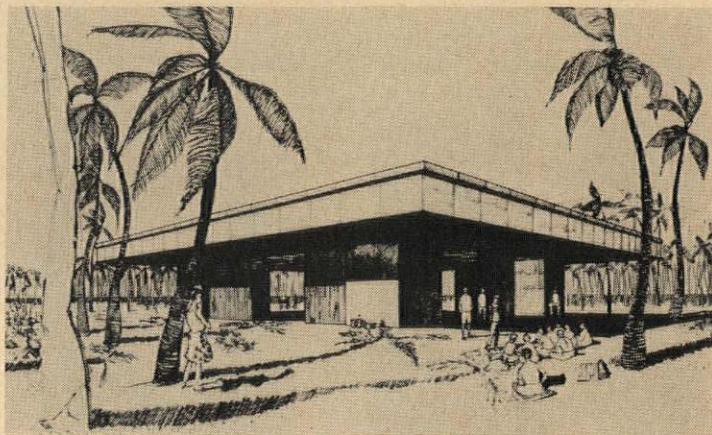
WASHINGTON, D.C. Approved in February by the Architect-Engineer Liaison Commission was the soon-to-be-published document on "Professional Collaboration in Environmental

Design." It outlines principles of professional relationship between architects, engineers, and landscape architects, and is the joint work of the American Institute of Architects,

the National Society of Professional Engineers, and the Consulting Engineers Council. Approval has also come from

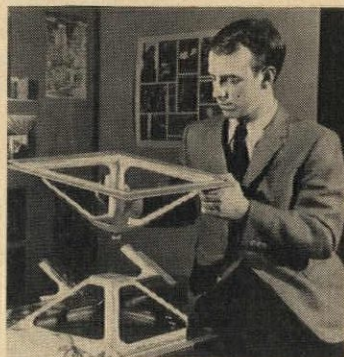
the American Society of Civil Engineers and the American Society of Landscape Architects.

Reynolds Aluminum Students Prize



WASHINGTON, D.C. William R. Mitchell, a fourth-year student at North Carolina State University, is the winner of the 1966 Reynolds Aluminum Prize for Architectural Students, an AIA-conducted competition for the "best original design of a building component in aluminum." Mitchell and his school will divide the \$5000 prize award.

The subject of this year's competition was, "An Educational Facility for the Peace Corps." Mitchell's entry used a lightweight, 6'x6', "nestable," stretch-formed aluminum module. Connected by key pins, the modules can be put together to form almost any type of three-dimensional space-frame. Because the modules are easy to transport, assemble, and can accommodate almost any type of service system, the jury (H. Samuel Kruse, James W. El-



more, Richard W. Snibbe) felt the design uniquely suited to the Peace Corps use. Entries from 29 architectural schools throughout the country were of such a high quality that the jury went on to say, "If this is representative of the skill with which the emerging generation of architects will delineate their concepts, we are sure that the new generation of architects will be able to communicate."

WASHINGTON/FINANCIAL NEWS

BY E. E. HALMOS

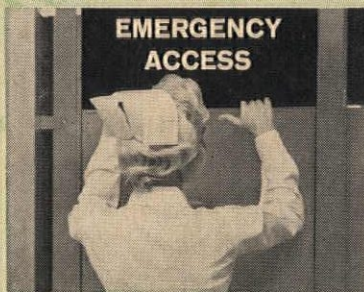
A series of moves on the part of Government and municipal officials are evident in Washington that are of concern to architects: steps toward the establishment of some type of national building codes and building standards.

There's no formal bill to this effect yet before Congress (though there may be before the current session is over), but there is enough evidence around now to give a picture of what's afoot.

For example:

(a) Several months ago, the six-year-old Committee on Intergovernmental Relations (created by Congress in 1959, and consisting of a group of Government agency and municipal officials) came out with sweeping recommendations. Among them: a national program for development of performance standards; a national program of research in building construction; development of a national model code by a national commission; state licensing of building inspectors.

Weis solid brass recessed latch releases by merely lifting door upward. No delay in reaching an emergency situation fast.



This Weis feature is especially important in hospital, school, and other institutional locations.

Compact demonstration kit shows action...display brought to your office upon request.

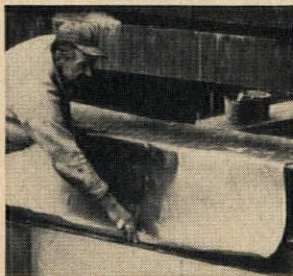


WEIS

HENRY WEIS MFG. CO.
ELKHART, INDIANA

Moistop® won't rip and tear like polyethylene film

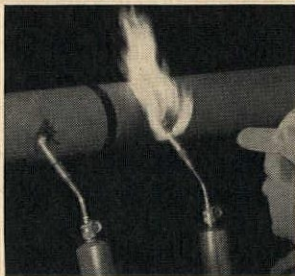
SPECIFY THESE OTHER CONSTRUCTION PAPERS AND VAPOR BARRIERS FOR MAXIMUM PROTECTION IN CRITICAL BUILDING AREAS



Copper Armored Sisalkraft®

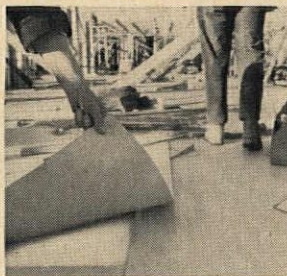
For concealed flashing with pure copper at 1/5th the cost of heavy copper:

COPPER ARMORED SISALKRAFT. A combination of electro-deposit copper and reinforced Sisalkraft that provides lifelong protection against moisture penetration at vulnerable points in the structure.



Pyro-Kure

Permanent, noncombustible vapor barriers for pipe jacketing, air conditioning duct insulation and industrial insulation facing: **PYRO-KURE®**. A line of flame-resistant, reinforced laminations with a U/L flame spread rating of "25 or less." Complies with National Building Code standard for noncombustibility.



Curing Papers

For maximum protection and curing of concrete: **SISALKRAFT® CURING PAPERS.** Reinforced, waterproof papers prevent damage and soiling of newly placed concrete slabs. Retards hydration, provides a maximum cure for harder, denser concrete floors.



Roof Deck Vapor Barriers

For Class 1 Construction: **PYRO-KURE 600.** More than twice the vapor resistance of vinyl. Approved by Factory Mutual.
For Other Decks: VaporStop 710. Single ply, pre-built barrier (0.28 perm) at 20% less applied cost and 80% less weight than 15 lb. felt.

SPECIFY THIS TOUGH VAPOR BARRIER FOR UNDER SLAB PROTECTION



Place a sample of polyethylene film and a sample of Moistop side by side. Take a nail and scrape it across both . . . as hard as you want.

You'll find that polyethylene ruptures but Moistop remains undamaged.

Moistop was made this tough because Architects found that too many moisture barriers failed on the job, with moisture and water penetration resulting. Moistop combines the inert properties of polyethylene film with the strength and body of tough, reinforced, waterproof paper. This multi-ply construction makes Moistop a stronger, better moisture-vapor barrier than any other available product, assuring your client of a permanent barrier to keep floors dry.

Specification: The vapor barrier shall be unrolled directly on top of the base fill, parallel with the direction of pour. Joints may be unsealed if lapped a minimum of six inches. Any damage to the vapor barrier shall be repaired before placing concrete. The vapor barrier shall be **Moistop**, as manufactured by the Sisalkraft Division, St. Regis Paper Company. Check Sweet's File 8h/Si.

Send for physical property data and sample of Moistop. Write: "Moistop Data": Sisalkraft, 56 Starkey Avenue, Attleboro, Massachusetts.

SISALKRAFT DIVISION **ST REGIS**

On Readers' Service Card, circle No. 462

(b) The President, in his message calling for a \$2,300,000,000 "Demonstration Cities Program" (to rebuild and rehabilitate city core areas), devoted a whole paragraph to the problem of "archaic and wasteful building practices (and codes) which have inhibited the use of modern technology and inflated the cost of rebuilding."

(c) A bill now before the Senate would make the Intergovernmental group a permanent body, with a salaried director, and would strengthen its directive to "develop sound legislative recommendations" (S. 2927).

(d) By administrative action, many Government agencies are now enforcing national standards—through directives and requirements of Urban Renewal, sewer and water construction, highway, housing, and other Federally-aided work.

Some organizations, notably the AIA, strongly approved of the President's "Demonstration Cities" idea, but made no comment on the reference to codes or its consequences. However, the whole idea of nationally-written codes and performance standards has received a far from enthusiastic appraisal from many industry groups, including the Associated General Contractors, the National Association of Home Builders, the National Forest Products Association, and others.

These groups have pointed out that the Intergovernmental group's recommendations seem to ignore completely the efforts of such groups as the Building Officials Conference of America, which has been developing model codes for voluntary local acceptance for many years; and the fact that, though many local codes cannot be defended very strongly, a national code cannot take account of local conditions, preferences, and the like.

From what has emerged so far, which also includes employment of a "building code specialist" by the new Housing and Urban Development Department, it would seem architects might: (1) work to update local codes to obviate the need for national standards, if that's their idea of the best solution; or (2) insure that professionals are well represented on any group that may be empowered to write such national rules.

Senate Bills Aimed at Cities

The Presidential program on housing and planning for this session of Congress took shape rapidly, as Congress received a flood of related messages, and a number of bills with the "Administration" label on them.

Chief among these, for architects, were a group of three measures introduced in the Senate (S. 2977, 2978, 2979), which contained some controversial suggestions that were inherited from proposals made a year or more ago. Key bill is S. 2977, the "Urban Development Act," which contained a number of provisions that even the Senate sponsor (Alabama Democrat John Sparkman) said he didn't approve: FHA loan assurance of up to \$25 million to private developers for construction of "new towns"; added money for mass transit assistance and research; grants to state and metropolitan area agencies for establishment of "urban information centers" to gather information on progress of local programs.

It should be noted that the program covered by the bills is aimed at major metropolitan areas almost exclusively. New, privately owned communities could get FHA aid if they "make a substantial contribution to the sound and economic growth of the area," can show "substantial" economies through large-scale development, have easy access to metropolitan centers of employment. FHA aid would also be available for water and sewerage systems, if such facilities are not available otherwise.

(With a group of other bills already before Congress—notably S. 2842, the "Demonstration Cities Act," and S. 2804, which covers aid to mass transportation—the "package" of housing and urban development matters is already well in hand. In addition, Republicans in the House have introduced their own version of the "Demonstration Cities Act," principally aimed at keeping control more firmly in local hands.)

Federal Air Pollution Control?

Factory and industrial building design could be affected by a provision in Administration-backed moves to limit air pollution (part of President Johnson's "Preservation of Our National Heritage" message).

Admitting that much remains unknown about air pollution and its causes, the President said he plans to issue an executive order shortly, dealing with air pollution caused by Federally-owned installa-



tions. This would certainly have the effect of setting a pattern for private industrial projects as well.

Pollution experts so far agree that there are two principal ways in which pollution from industrial processes can be controlled: dust and other trapping devices at the outlet flues, and extremely high "stacks" that would discharge possible pollutants high enough to insure dilution before the material again comes to earth.

On the Boards for O.C.

Three newly planned structures—all of them controversial to some degree—moved toward actual construction in late February:



Congress seemed about to give final approval for construction of the \$40-million "National Air and Space Museum" on the Mall, after a bill passed the House with only one dissenting vote. Hellmuth, Obata & Kassabaum, architects, are expected to complete plans by mid-year; some \$11 million will be spent on the structure during the 1967 fiscal year (which starts in July, 1966).

The Navy's Bureau of Yards and Docks said it had selected a team of architects, headed by Yamasaki & Associates, to design a \$75-million "little Pentagon," which will be located in southeast Washington and will house some 10,000 Defense Department employees. Others in the "team" include Emery Roth & Sons; Worthington, Skilling, Helle & Jackson; and Joseph R. Loring.

And finally, despite usual criticism, the City of Washington was apparently ready to give a go-ahead to construction of a new central public library building by Mies van der Rohe (see photo).

Financial

- Of major concern to the construction industry is the adamant refusal of building trades union chieftains to accept any Federal dictation of "guidelines" on wages in the industry. During 1965, average wage settlement topped 7½ per cent above previous wages; some 400 major wage contracts are up for negotiations this year—mostly in the next few months. Indications are that unless some drastic action is forthcoming, demands will run even higher.

- Note that the Department of Housing and Urban Development has raised the maximum interest rate on FHA mortgages to 5½ per cent—up ¼ from the previous high. This could be the explanation for an unseasonal spurt in housing starts in the last two months of the previous year—a spurt that continued into January, when "new starts" were at an adjusted rate of 1,500,000—up 7 per cent over a year ago.

- The January housing figure was part of a generally encouraging picture for the industry for the month. Over-all value of new construction put-in-place was set at \$4,900,000,000—up 8 per cent over the previous year.

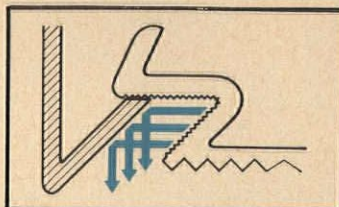
- Construction costs, as reflected in highway work at least, showed some signs of easing, though they were still at record highs. For the last quarter of 1965, according to the Bureau of Public Roads, highway costs dropped by the tiny fraction of 0.1 per cent from the third quarter, to 106.6 per cent of the 1957-59 average. The index figure, however, was still within easy hailing distance of the all-time high (in the second quarter of 1965) of 106.9.

✓ another
NEW LOOK
IN LIGHT
product



NEW "Z" FRAMELESS - closest yet to a modular lens

Here is the closest thing yet to a modular lens. Wakefield's "Z" lens configuration actually gives greater lens surface, greater efficiency, least metal show of any flanged troffer or surface unit. For photometric and aesthetic variety three lens patterns are available in all four surface and recessed unit sizes—1x4, 1x8, 2x2 and 2x4. Lenses hinge from either side. Fixed metal pins project from the housing and slip into new, stronger, injection-molded end caps attached to the lens by ultrasonic fusing. End of all



"Z" lens gives all-luminous look

lenses are light-sealed to fixtures. Luminous joints between fixtures in rows, with no metal showing at joints. Here is the luminaire you've been seeking to fulfill today's aesthetic requirements. Call your Wakefield man and see the full luminous beauty of the "Z" Frameless. Or write for brochure.

ITT

WAKEFIELD LIGHTING DIVISION
WAKEFIELD CORPORATION
P.O. Box 195, Vermilion, Ohio 44089
A SUBSIDIARY OF INTERNATIONAL TELEPHONE AND TELEGRAPH CORPORATION

What does Ceco do to help you deliver a pristine project?

Ships your doors in bags.



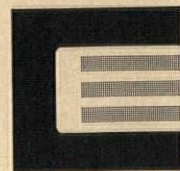
The reason for this is that somehow or other door handlers respect polyethylene. A bag made of it looks as if it might tear. So people seem to want to treat such a bag with kid gloves. Whatever's inside benefits. That's why we put your "Colorstyle" Décor Doors there.

We want these doors flawless in your building. So we encourage your contractor to erect them with the bags still on. That gives you beautiful doors in mint condition and, once the bags are off, adds to your stature with the client.

This is especially true when your doors are Colorstyle doors, prefinished with baked-on vinyl-type enamels. These doors come with a fine embossed finish that looks and even feels like leather. They come smooth, too.

Colorstyle Doors cost no more than primed steel doors painted on the job. That's about what wood doors cost installed. So they're competitive and entirely practical to specify.

Better look into these doors now. Ask for catalogs. Or ask us to bring you a sample in a bag. The Ceco Corporation, general offices: 5601 West 26th Street, Chicago, Illinois 60650. Sales offices and plants in principal cities from coast-to-coast.

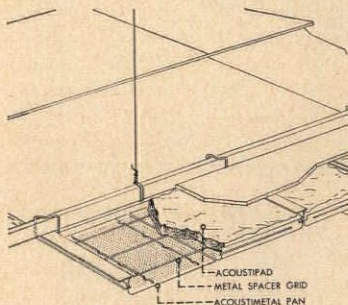


CECO

**COLORSTYLE
STEEL DOORS**

Acoustics

Metal Pan Ceiling . . .



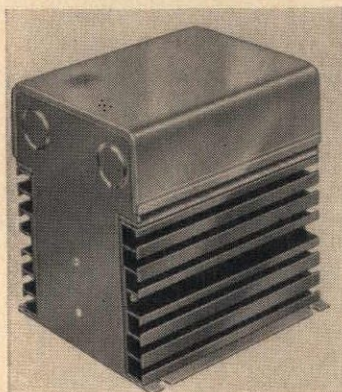
. . . sandwiches mineral-fiber "Acoustipads" between gypsum board backing and standard acoustical metal pan assembly to reduce sound transmission. Perforated pan units are 1' wide by 1', 2', 3', or 4' long. Noise Reduction Coefficient range is .75 to .85. National Gypsum Co., 325 Delaware Ave., Buffalo, N.Y. On Readers' Service Card, Circle 100

Air/Temperature

Outdoor Sensor

Control for hydronic and warm-air heating systems combines time switch for day and night temperature levels with an outdoor thermostat that starts the heat earlier on a cold morning. Manufacturer says this is the first control to combine the two functions. Control Devices, Inc., 1007 Ferry Rd., Doylestown, Pa. On Readers' Service Card, Circle 101

Modulating Control for Electric Heating



A recently developed economical solid-state controller for electric heating maintains even temperatures in commercial buildings. Instead of full-on or full-off, the new control de-

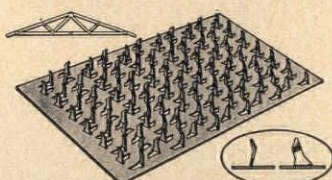
creases the current input as temperature rises, and increases it as temperature falls. Although such controls have been available before, the price has been high. This controller, according to the manufacturer, is comparable in price and performance with modulating controllers for hydronic and hot-air heating systems. Manufactured in 2 sizes: 2 kw (3" cube) and 6 kw (6" cube, shown). Honeywell Inc., 2727 S. Fourth Ave., Minneapolis, Minn. 55408. On Readers' Service Card, Circle 102

It's a Small Thermostat

Pneumatic room thermostat, 1 7/8" x 3", is smallest on market says manufacturer. "Powerstar" can be set to automatically lower temperature at night, and is sensitive to room-air changes of 0.1 F. Manufactured in a variety of cover finishes. The Powers Regulator Co., 3400 Oakton St., Skokie, Ill. On Readers' Service Card, Circle 103

Construction

The Connection



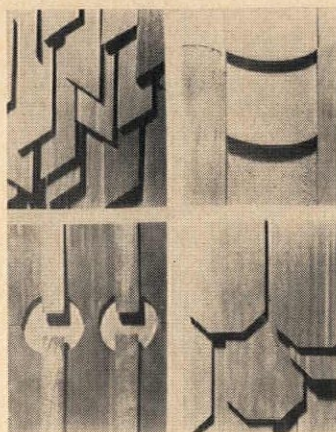
"Fibre Grip" truss connector is designed for trusses spanning between 20' and 50'. Teeth punched out of the connector plate at a 20° angle spread the wood fibers and lock the plate on the joint. Installation is through hydraulic pressure from both sides of the truss joint. Timber Engineering Co., 1619 Massachusetts Ave. NW, Washington, DC. 20036. On Readers' Service Card, Circle 104

Concrete Bricks

Marble, limestone, and granite aggregates, bonded with cement and colored with oxides, produce concrete bricks with a rough, exposed-aggregate face. The bricks are laid in mortar

like conventional bricks. Said to have high compressive strength and density and low moisture absorption, the brick is manufactured by local franchise agents in a wide range of fade-resistant colors. Miami Stone of America, Inc., 4550 Bluff Rd., Indianapolis, Ind. On Readers' Service Card, Circle 105

The Cutting Caper



Ideas for cutting and patterning wood shingles for interiors include the "fish-scale" wave, "crazy quilt," "half cove" butts, and the "toothy" look. Shingle walls are suggested for reception or recreation rooms, vacation houses, and other interiors. The new patterns are said to be inexpensive and easy to install. Red Cedar Shingle and Handsplit Shake Bureau, 941 White Henry Stuart Bldg., Seattle, Wash. 98101. On Readers' Service Card, Circle 106

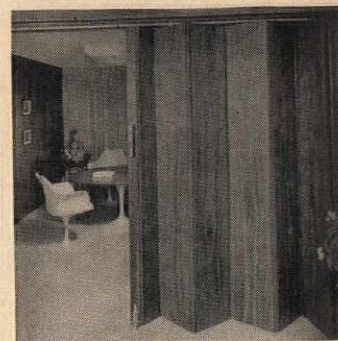
Shingle Switch



Mineral-based roof shingles are textured and colored to look like weathered cedar. They can be cut with a saw and nailed, but will not burn. Manufactured in 16" lengths, and in 6", 8", and 10" widths. Johns-Manville, 22 E. 40th St., New York, N.Y. 10016. On Readers' Service Card, Circle 107

Doors/Windows

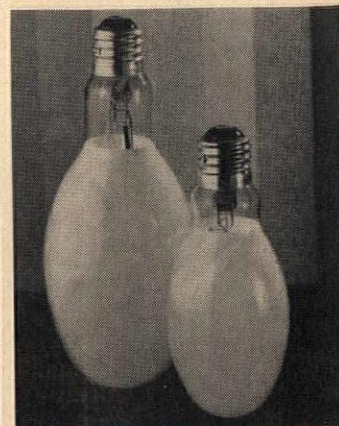
Folding Door Bars Noise



Dual, accordion-fold wood door, "Scale/12 STC (Sound Transmission Class) 25," was developed to stop noise at large openings. Made from 1 3/8"-thick, high-density wood core panels with wood or Formica veneer, the door operates on a ceiling track. It is sealed top and bottom with "sweeps" to stop sound. Panel-fold Doors, Inc., 1090 E. 17th St., Hialeah, Fla. 33010. On Readers' Service Card, Circle 108

Electrical Equipment

Warm Light Coat



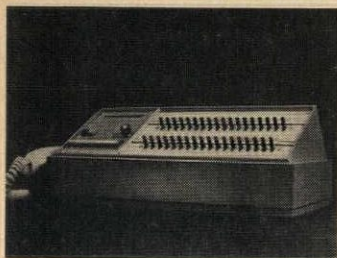
A phosphor coating gives mercury lamps a warm light suitable for indoor use in commercial and institutional applications, claims the manufacturer. The new lamps, called "DeLuxe White," are available in 175-, 400-, and 1000-w sizes. The manufacturer says the color of the light is better than color-improved mercury lamps or cool-white fluorescent lamps. General Electric Co., Nela Park, Cleveland, Ohio 44112. On Readers' Service Card, Circle 109

Kitchen Compact

A small kitchen unit combines an electric cooking range and oven with an electric hot-water heater. The oven is at eye-level, above the burners of the 30"-wide unit. The 47,600-Btu/h water heater under the range feeds a 28-gal storage tank that can be connected to radiating or convecting heating units. Electrotemp "Medalist" is manufactured in six colors. Heat-Timer Corp., 115 Fifth Ave., New York, N.Y. 10003.

On Readers' Service Card, Circle 110

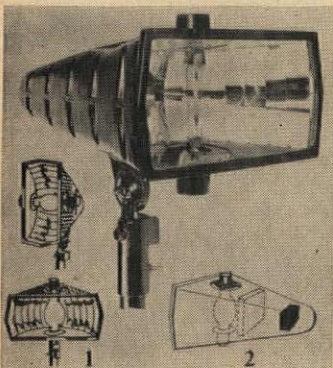
Nurses' Aide



"Audio-Visory," a communication system to link patients and nurses in hospitals, is expected to be practically maintenance free, since its electronic circuitry is solid state. Two-way voice communication is provided between nurse on duty and patient in bed, and the desktop master station has both light and buzzer indicators. Emergency calls trigger a continuous buzzer, which can be turned off only at the patient station. For remote control, units are pre-wired for hookup with television or radio. Motorola Inc., Communications Div., 4501 Augusta Blvd., Chicago, Ill. 60651.

On Readers' Service Card, Circle 111

New Housing for New Lamps



Segmented reflector for outdoor lighting has been designed for use with new light sources

(such as G.E.'s "Lucalox"; see p. 39, DECEMBER 1965 P/A) or with mercury vapor lamps. The aluminum housing mounts vertically or horizontally atop masts. Wide-Lite Corp., 4114 Gulf Freeway, Houston, Texas.

On Readers' Service Card, Circle 112

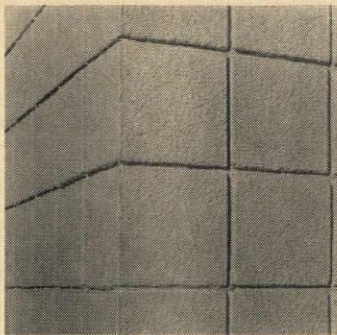
Finishes/Protectors

Long-Life Finish for Metal

Projections of exposure and abrasion tests on metal finishes using "Kynar 500," a fluoroplastic base, indicate a 30-year life—at an initial cost that is lower than comparable forms of metal protection. Baked-on finish can be retouched on the job. Color stability and color matching are said to be excellent. The manufacturer offers information about companies supplying building components coated with Kynar 500. Pennsalt Chemicals Corp., 3 Penn Center, Philadelphia, Pa. 19102.

On Readers' Service Card, Circle 113

From the Monastery



"Monastite," a cementitious, breathing-type masonry coating developed in a Trappist Monastery in Georgia, contains plasticizers and adhesives that increase the strength of its bond. Available in white, gray, rose and buff. Grace Construction Materials, 62 Whittemore Ave., Cambridge, Mass. 02140.

On Readers' Service Card, Circle 114

Nonfade White

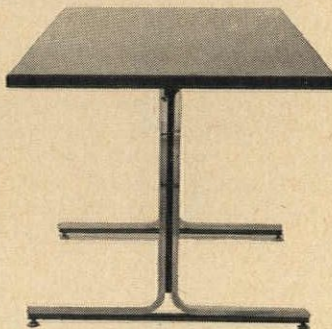
Top coat covers asphalt and shingle roofing with white or pastel colors to increase heat-reflectance and improve appearance. Paintlike coating has up to five-year life-span and contains curing agents that reduce discoloration when applied to Butyl or similar sheet materials. Chemical Coatings

& Engineering Co., Inc., 221 Brooke St., Media, Pa.

On Readers' Service Card, Circle 115

Furnishings

Chrome Bars



An impressively neat series of utilitarian tables and benches is available from Dick Stambaugh, Inc. Table legs are of solid cold rolled steel bars with a mirror chrome finish and baked enamel black steel; they have self-leveling glides and are guaranteed against breakage. Tabletops in plastic laminates (Formica, Textolite, or Parkwood), edged in 1/4"-thick wood (no mean feat on a round table) as well as laminates; for industrial use, an edge of solid black Formica. Variety of heights, sizes; price list. Dick Stambaugh, Inc., Ada, Ohio 45810.

On Readers' Service Card, Circle 116

Elegance Outdoors



Knoll's Leisure Collection is an elegant indoor-outdoor furniture group that is impervious to rain and weather. The furniture was designed by Richard Schultz and is composed of several technical innovations: a nylon-Dacron mesh especially developed for the collection, combines the good looks of steel mesh with the comfort of a hammock; seating is reinforced along the sides with a new leather-like vinyl that has a good "hand"; frames are of both die-cast and extruded

aluminum elements that are coated with a corrosion-resistant, textured-plastic finish. The group includes: both an adjustable and contour chaise lounge, rectangular and square dining and coffee tables, dining and lounge chairs with or without arms. Available in white or beige finishes; tabletops in four colors. Knoll Assoc., Inc., 320 Park Ave., New York, N.Y.

On Readers' Service Card, Circle 117

Elementary Furniture, My Dear Watson



A unit for science at the elementary level is offered as a learning-working-storage center. Designed to provide a learning environment in depth (by exercising the tactile and auditory, as well as the visual senses), the unit is structured to scale for the younger student, and features electric supply for use of turntable and projector, white plastic write-on top (printed with various graphs), and student panels with corkboard and magnetic surfaces. A most useful, if not graceful, piece of schoolroom furniture. E. H. Sheldon Equipment Co., Muskegon, Mich.

On Readers' Service Card, Circle 118

Prints for Architects

It was once said that when the fabric designs by C. F. W. Voysey were introduced in the 1890's, "It was as if spring had come all of a sudden." The same might well be said of the first fabric collection of the newly reorganized Jofa, Inc. The tight configuration of many of the bold, flat patterns in bright colors makes many of these representational designs seem abstract when hung in folds or seen from any distance. Sources for the fabrics range from 19th-Century botanical drawings to ancient Chinese screens, but the ab-

How do you measure comfort?

In inches of Styrofoam.

Compared to other insulations, a little Styrofoam® brand insulation board goes a long way. Little is needed for the comfort level you want, the economy you expect. Styrofoam not only gives superior insulation efficiency, but it is moisture-resistant and requires no vapor barrier. Specify Styrofoam in one of your buildings

now and its comfort is available for years. It won't rot, mold or deteriorate. It's light as well as easy to install. And Styrofoam insulation is versatile. Use it over masonry construction, in perimeters or forms. Then give it any finish you like—gypsum wallboard, wood paneling or plaster.

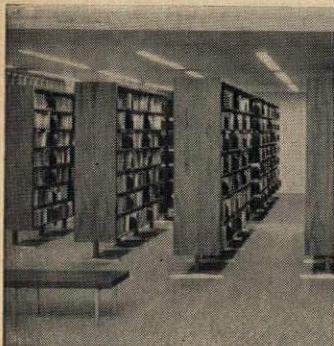
There's a good way to learn more about Styrofoam. Check Sweet's Architectural File 10a/Do. Or write The Dow Chemical Company, Plastics Sales Department, Midland, Michigan 48640.

Styrofoam is Dow's registered trademark for expanded polystyrene produced by an exclusive manufacturing process. Accept no substitutes...look for this trademark on all Styrofoam brand insulation board.



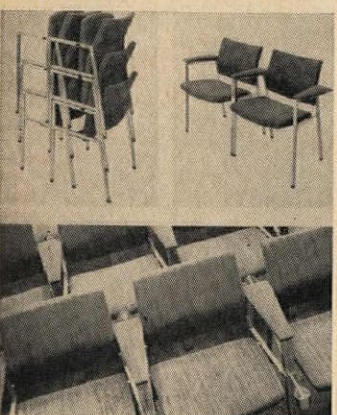
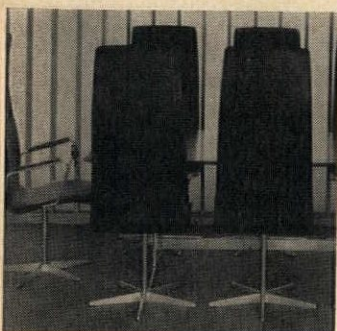
struct quality should make them appealing to architects. Most of the prints are cotton, thus making them suitable for many installations. The collection is supplemented by a group of solid-tone textures correlated with the colors of the prints, Jofa, Inc., 351 Park Ave. S., New York, N.Y.
On Readers' Service Card, Circle 119

Library Stacks Updated



Aluminum feet get bookcases off the floor, and wooden end panels soften institutional look of library shelving. Shelves are metal. Estey Corp., 1 Catherine St., Red Bank, N.J. 07705.
On Readers' Service Card, Circle 120

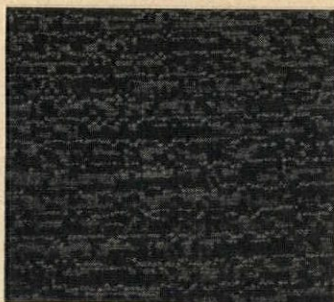
Latest by Arne Jacobsen



A new series of chairs and conference/dining tables designed by architect Arne Jacobsen is available from Fritz Hansen, Inc., including: a high- or low-backed swivel armchair with

contour back (comfortable!) on a five-pronged aluminum base. Other pieces of interest: an expandable dining table whose carefully balanced leaves appear or disappear (from beneath the unit) without strain, designed by Aage Schmidt Christensen; and a neat multiple-seating unit with tip-up seats designed by Erik Herløw for lecture halls and lobbies. Joined at the arm, the auditorium chairs may be separated (just pull) and stacked when not needed; may be used as individual units as well. Fritz Hansen, Inc., 305 E. 63rd St., New York, N.Y.
On Readers' Service Card, Circle 121

Three Fibers, Five Carpets



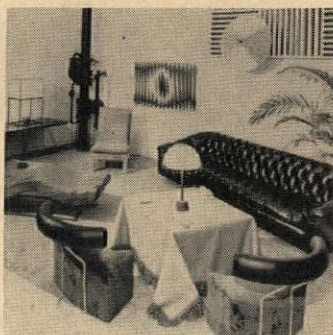
Available from Downs are: two wool carpets, one a two-tone extra-high pile with a shag effect, the other in tightly tufted three-ply wool loop; two Acrilan carpets, one a slightly striated pattern for commercial and residential use, the other of cut and loop piles for traditional furnishings; and the fifth, a two-color design in two-level Cumuloft nylon. Variety of colors, 12' and 15' widths; \$6.95 to \$12.95 per sq yd. Downs Carpet Co., "A" and Indiana Ave., Philadelphia, Pa.
On Readers' Service Card, Circle 122

New Way for Fabric Walls

Any fabric—in fact, even any casement fabric—can be laminated to a paper backing and then hung like wallpaper. The method should be considered for museums and art galleries, since tacks and nails can be removed without leaving visible holes. The laminated material can be cut with a razor, the seams then butted. Also available is a wallpaper in 17 patterns which, because of its porosity (through rayon-fiber reinforcement), can be re-

moved from the walls simply by peeling; no soaking or steaming is necessary. F. Schumacher & Co., 939 Third Ave., New York, N.Y.
On Readers' Service Card, Circle 123

And Away We Go



Interesting design ideas by Milo Baughman are executed by Thayer Coggin, Inc. for the conspicuous consumption crowd. Ideas do not rival the gutsy honesty of the pipe-valve in the Pop setting shown. Among furniture offered: a vast buggy-tufted sofa upholstered in black Naugahyde and a pair of ottomans with curved back rests supported by metal brackets painted lime green. Another series is "cube" style furniture of peel cane, including a section unit and an all-but-on-the-floor chaise lounge. Thayer Coggin, Inc., High Point, N.C.
On Readers' Service Card, Circle 124

Organization, Man



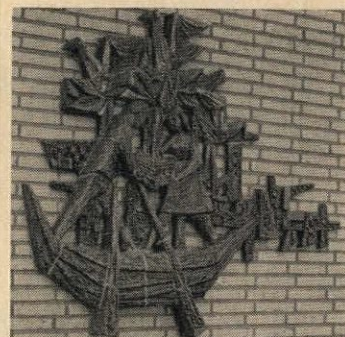
Compartmentalized storage units are featured: a chest designed by Edward Frank occupies only 36" of wall space, has 10 see-through plastic drawers; a service cart with "slate" Formica top and double-shelf library case with concealed storage designed by John Caldwell. Other units, from dining tables and side and occasional tables to a revolving book/record storage table, are also offered in this collection. Both ensembles are made of American black walnut.

Brown-Saltman of California, 15000 S. Figueroa, Gardena, Calif.

On Readers' Service Card, Circle 125

Services

Custom Ceramics

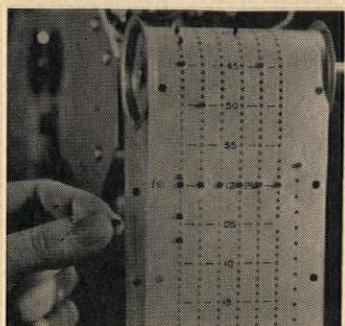


Dutch manufacturers offers custom service for building ceramics of any size, shape or color. Fired at 3200 F, the products are guaranteed weatherproof. The ceramics may be designed by the customer or by the manufacturers' 150-man staff of artists. Royal Delft Designs, 30 N. La Salle St., Chicago, Ill.

On Readers' Service Card, Circle 126

Special Equipment

Operation Automate



Simplicity and economy are said to be two of the advantages of the "Servo-Communications" system for schools. The system centralizes controls for communications, clocks, and utilities at a desk-size console; it combines all wiring in single conduits. A durable belt of punched mylar plastic tape inside the "master clock" can be programmed with pegs by a nontechnical person. Beside controlling intercoms, clocks, heating/cooling equipment and lights, the system can turn shop equipment off and on and provide vandalism protection. DuKane Corp., St. Charles, Ill.

On Readers' Service Card, Circle 127



Cissell dryers are efficiency sized too!

Like well-planned efficiency apartments and compact kitchens, the Cissell Petite Dryer is designed to give the best possible convenience in the smallest possible package. Here's how it's "big". Holds a full 16-pounds dry weight. Offers two temperature settings, 150 degrees and 185 degrees, with de-wrinkling cool-down period at end of drying cycle. Has a 28" drop to provide soft, fluffy drying. Dries fast — approximately ten pounds in twenty minutes. And here's how it's "small". Stands only 48" high, affords "look-over" spaciousness, does not require special high ceilings. Takes up floor space only 30" deep by 28¾" wide, is light enough to make upper floor installation fast and easy. The Cissell Petite operates on either gas or electricity, has all safety controls and is simple to vent. In any color you desire. Want bigger capacity for special applications? Cissell makes a full line of laundry dryers, including the 25-pound dry weight capacity Compact. W. M. Cissell Mfg. Co., Inc., Louisville, Ky.

On Readers' Service Card, circle No. 340



Petite



Compact

CISSELL®

Drums Along the Bay



Big brother to last year's "Fire Drum I" is, appropriately enough, "Fire Drum II." This free-standing, pedestal-type steel fireplace is fully lined with 2" cast refractory that reflects heat out the opening. The 32"-diameter Fire Drum is 35½" high, made of 14-gage steel, and uses a 7"-diameter pipe flue. Available in all black or black with choice of six porcelain enamel color baffles in red, blue, green, umber, ochre, or gold. Fire Drum Corp., 1415 Yosemite, San Francisco, Calif.

On Readers' Service Card, Circle 128

Free-Standing Fireplace Features Silent Butler



Conical shaped steel hood of free standing fireplace is welded to 24" x 36" rectangular base resting on three self-leveling legs. It features a removable silent butler ash drawer with sliding cover for tidy emptying. A 1" firebrick plus ¼" asbestos sheet insulates fireplace floor. Hood meets 8" flue 4' above floor level. Available in three porcelain-enamel colors or in matte-black enamel. The Majestic Co., Inc., Huntington, Ind. 46750.

On Readers' Service Card, Circle 129

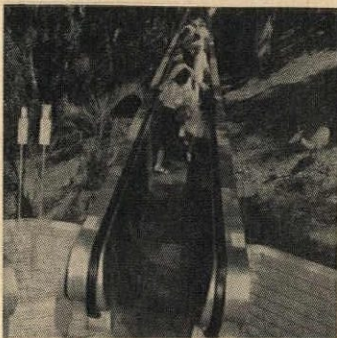
Pencil Points

Flashlight batteries power lead pointer for drafting pencils. High-speed steel cutters are re-

placeable and batteries last up to a year. Carbon dust collector is nonspill. International Engineering Co., 126 Merrick Rd., Amityville, N.Y. 11701.

On Readers' Service Card, Circle 130

Smooth-Ride Sidewalk



Moving sidewalks or ramps give smoother ride by using belting that requires no center support. A 1"-thick belting is stiffened laterally with wires and rides on rollers that extend only 4" on both sides. Balustrades are either stainless steel or stainless steel and glass. Installation shown is at San Diego Zoo. Stephens-Adamson Manufacturing Co., Transportation Equipment Div., Aurora, Ill. 60507.

On Readers' Service Card, Circle 131

Surfacing

A Little Goes a Long Way



Hardwood veneer, laminated between clear vinyl top sheet and aluminum-vinyl-asbestos backing, makes a flooring only .08" thick. "True Wood" installs like vinyl tile and is said to be tough, durable, and resistant to common stains; it can therefore be used in kitchens and bathrooms. Walnut, cherry, and oak are the standard woods, available in random widths, in squares, and in special parquet and herringbone patterns. Wood-Mosaic Corp., 5000 Crittenden Dr., Louisville, Ky.

On Readers' Service Card, Circle 132



SILICONE TRAFFIC TOPPING

CONTACT THESE REGIONAL DISTRIBUTORS FOR MORE INFORMATION AND YOUR LOCAL SOURCE OF SUPPLY

ALABAMA

BADHAM SALES COMPANY, INC.
1909 First Avenue, Birmingham

CALIFORNIA

VERTEX, INC.
4206 Charter Street, Los Angeles 58
850 S. Van Ness Avenue, San Francisco

COLORADO

STYRO PRODUCTS, INC.
70 W. 6th Avenue, Denver 80204

FLORIDA

ROWELL-VAN ATTA, INC.
273 E. Oakland Park Boulevard
Ft. Lauderdale
3660 South Westshore Boulevard, Tampa

GEORGIA

BADHAM SALES COMPANY, INC.
1145 Peachtree Street, N.E., Atlanta 30309

ILLINOIS

JONES & BROWN & CO., INC.
230 N. Canal Street, Chicago 6
STETSON BUILDING PRODUCTS
112 Second Street, Moline

IOWA

STETSON BUILDING PRODUCTS
512 Southwest 9th Street, Des Moines

MARYLAND

R. T. GUMPERT COMPANY
5615 York Road, Baltimore 12
5708-B Frederick Avenue, Rockville

MASSACHUSETTS

REFRATORIES & BUILDING SPECIALTIES, INC.
767 Concord Avenue, Cambridge 02138

MICHIGAN

HOLMES ASSOCIATES, INC.
1221 E. Nine Mile Road, Ferndale 20

MINNESOTA

EDWARDS SALES CORPORATION
2916 Girard Avenue South, Minneapolis 8

MISSOURI

STYRO PRODUCTS, INC.
1590 Page Industrial Boulevard, St. Louis 32
2029 Harrison, Kansas City

NEBRASKA

STETSON BUILDING PRODUCTS
33 Kiewitt Plaza
3555 Farnam, Omaha

NEW YORK

CHEMICAL BUILDING SUPPLY, INC.
250 W. 57th Street, New York City 10019
CONSTRUCTION PLASTICS CORPORATION
Box 73 Eastwood Station
4016 New Court Avenue, Syracuse 13206

NORTH CAROLINA

BADHAM SALES COMPANY, INC.
538 Hollis Road, Charlotte

OHIO

THE R. L. WURZ COMPANY
13320 Enterprise Avenue, Cleveland 44125
955 Proprietors Road, Box 209, Worthington
DURBROW-OTTE ASSOCIATES, INC.
1426 Clay Street, Cincinnati 10

PENNSYLVANIA

TOM BROWN, INC.
Library Road & Killarney Drive
Box 10313, Pittsburgh 15234
G. & W. H. CORSON, INC.
Joshua Road & Stenton Avenue
Plymouth Meeting 19462

TENNESSEE

STYRO PRODUCTS, INC.
471 Tennessee Street, Memphis 3

TEXAS

THE EMERSON CO., Box 10913, Dallas
THE EMERSON CO., Box 2114, Houston 77052

WASHINGTON

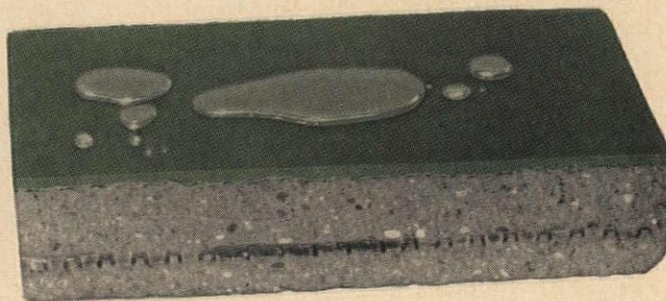
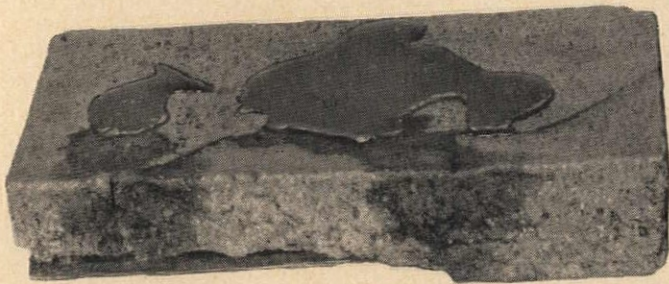
WILEY-BAYLEY, INC.
3310 Meridian North, Seattle 3

WISCONSIN

EDWARDS SALES CORP.
321 N. 121 St., Milwaukee

GENERAL  ELECTRIC

Concrete disintegrates...



...G-E Silicone Traffic Topping doesn't!

Let it snow and rain.
Let it freeze and thaw.

General Electric's new silicone rubber Traffic Topping protects walkways, ramps, parking areas, porches, swimming pools, balconies and other traffic areas against moisture damage.

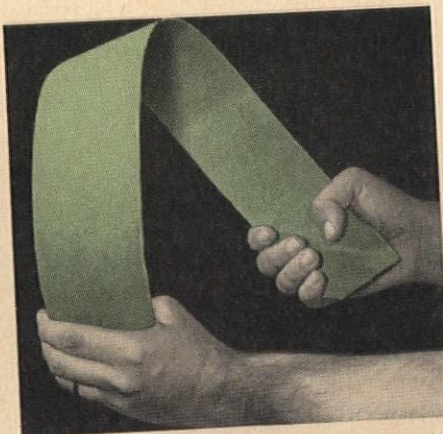
Once on, Traffic Topping stops costly maintenance. It won't let water in, yet "breathes" to let any moisture out. Because the base material is silicone rubber, the most durable, weatherproof elastomer known (the same as Silicone Construction Sealant), Traffic Topping stays flexible and moisture proof.

Traffic Topping won't crack, it's not brittle, and it forms a tough bond to concrete, wood, steel and other floorings. It's remarkably skidproof and is not damaged by salt. Grease and oil are easy to remove. It never needs painting.

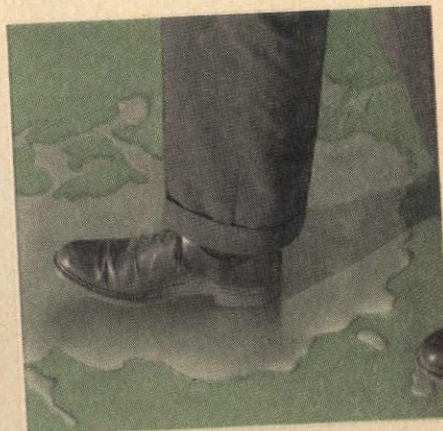
To date, no other outdoor coating has been able to stand up to weather and wear for very long. Traffic Topping will. For many years. On patios, steps, garages, runways, for instance. Anywhere there's water and traffic. For complete specifications, test results, application data, color selection and local distribution, please write Section Q4201, Silicone Products Dept., General Electric Co., Waterford, N.Y. 12188.



Quick, easy application. Just prime the surface, add catalyst to Traffic Topping, mix and trowel on. No expensive equipment needed. Only one coat is usually required, so application costs are low.



Permanent flexibility. Traffic Topping is resilient... expands and contracts without cracking even at temperatures as high as 300°F, as low as -65°F.



Safe, anti-skid surfaces. Even when wet, Traffic Topping provides superior traction. Excellent wear and abrasion resistance make it ideal for heavy traffic areas.

GENERAL  ELECTRIC



6607

New Textured Wormy Chestnut Marlite



Textured Wormy Chestnut Marlite adds a beautiful new dimension to walls in any room anywhere!

**Touch it. You can feel the texture.
Wash it. You can't harm its beauty.**

It's the newest and most exciting paneling you can specify for your building and remodeling projects. Marlite Wormy Chestnut reproduces the beautiful texture of natural Wormy Chestnut, with the Marlite soil-proof finish that stays like new for years. You can actually see and feel the texture in this unique wood-grained surface. And when you specify Marlite Wormy Chestnut you create more beautiful interiors, more satisfied clients. Get complete information from your building materials dealer, Sweet's File, or Marlite Division of Masonite Corporation, Dept. 414, Dover, Ohio.

Marlite®
plastic-finished paneling

ANOTHER QUALITY PRODUCT OF MASONITE® RESEARCH

MARLITE BRANCH OFFICES AND WAREHOUSES: 1721 Marietta Blvd., N.W., Atlanta, Georgia 30318 • 57 Smith Place, Cambridge, Mass. 02138 • 4545 James Place, Melrose Park (Chicago), Illinois 60160 • 1199 Great Southwest Parkway, Grand Prairie (Dallas), Texas 75050 • 777-139th Ave., San Leandro, Cal. 94578 • 1622 Phoebe St., LaMirada (Los Angeles), Cal. 90638 • 39 Windsor Ave., Mineola, L.I. (New York) 11501 • 2440 Sixth Ave. So., Seattle, Wash. 98134

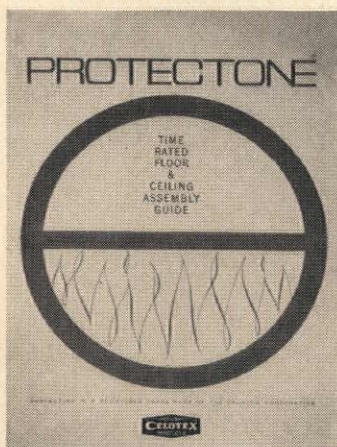
Acoustics Overhead



New catalog, "Ceiling Systems/1966," includes information on "Ceramaguard," an acoustical material suitable for high-humidity situations, such as indoor swimming pools, and the integrated "C-60 system." Both of these are recent additions to Armstrong ceilings. Other integrated systems and specialized ceilings using fire-retardant or membrane-faced materials for clean rooms are also included, plus a section on mineral-fiber ceilings and low-cost installations. Color and black-and-white photos illustrate descriptive text, engineering data charts, and installation details. 74 pages. Armstrong Cork Co., Dept. P.I., Lancaster, Pa.

On Readers' Service Card, Circle 200

Anti-Flame

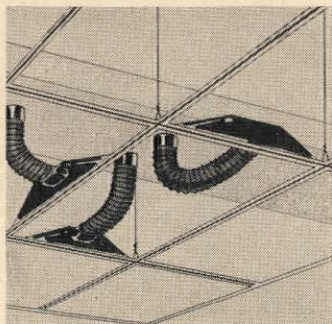


Fire ratings are given for "Celotex Protectone" ceilings using acoustical tile and lay-in panels. Data sheets chart ratings for various Protectone materials used in ceilings suspended from steel or wood joists supporting concrete or wood floors. Detail drawings. 39 pages. The Celotex Corp.,

120 N. Florida Ave., Tampa, Fla. 33602.

On Readers' Service Card, Circle 201

Air/Temperature Plug-in Diffusers



Aluminum T-section runners for supporting ceiling tile or light fixtures are coordinated with air diffusers that "plug in" to ducts. Available for either a grid or a strip pattern layout. Detail drawings. 20 pages. Titus Manufacturing Corp., Waterloo, Iowa 50704.

On Readers' Service Card, Circle 202

Cool and Certified

Directory lists 55 makes of through-wall and window air conditioners with their certified Btuh cooling capacities, amperes, and watts. Voltage is also listed but is not certified. National Electrical Manufacturers Assn., 155 E. 44 St., New York, N.Y. 10017.

On Readers' Service Card, Circle 203

Construction In Suspense

"Cable Construction in Contemporary Architecture" illustrates applications for cable-suspended and cable-supported roofs over sports arenas, plants, hangars, and exhibition halls. Preceding these descriptions are contributions by two consulting engineers, Richard M. Gensert and Lev Zetlin, discussing the history of cable construction, the theory of using cables, and, with design examples, how to overcome the problem of flutter. Another section of the booklet gives properties of cables and tabulates dimensions of cable hardware. 78 pages. Bethlehem Steel Corp., Bethlehem, Pa.

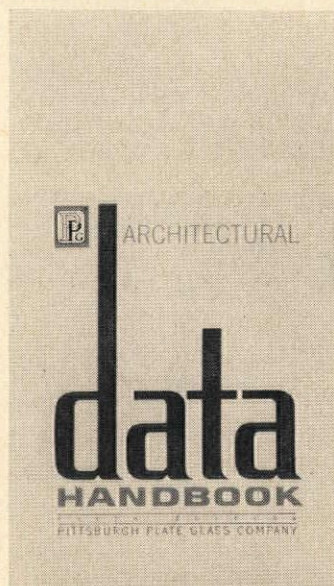
On Readers' Service Card, Circle 204

"Plexiglas in Architecture"

Full-color booklet illustrates with photos the uses of transparent and opaque Plexiglas for large domes, window glazing, modular bubble skylights, vaulted ceilings, and "sculptured" facings for exteriors. Tables give breakage resistance, light- and heat-transmittance, deflection, recommended thicknesses, etc. Booklet discusses sealants and illustrates framing details. Rohm & Haas Co., Independence Mall West, Philadelphia, Pa. 19105.

On Readers' Service Card, Circle 205

Handy Book...



... contains charts, graphs, and diagrams illustrating architectural products such as glass and glass block; metal curtain walls, moldings, etc.; doors; sealants; fiber glass and Foamglas insulation; and paints. Cross sections, short specs, photos, and color samples accompany descriptive text. Table of contents is broken down into sections and book is well indexed. 133 pages. Pittsburgh Plate Glass Co., 632 Fort Duquesne Blvd., Pittsburgh, Pa. 15222.

On Readers' Service Card, Circle 206

Face-Lifting Screens

Four aluminum-screen refacing systems are described in a full-color bulletin on exterior renovations. They include an open, cellular grille; a vertical blade that allows light and air to filter through; a large module,

"Sculptura-Panel" system; and a small-scale textured open-work screen. Photos, cross-sections, and installation details are included. 12 pages. Construction Specialties, Inc., 55 Winans Ave., Cranford, N.J.

On Readers' Service Card, Circle 207

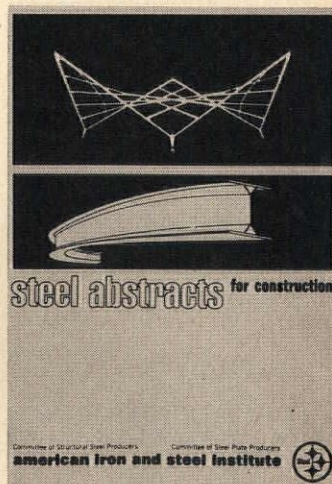
Open the Ceiling to the Sky



Dome, barrel-vault, pyramid and other types of transparent overhead structures are detailed and specified in two illustrated brochures: "Glazed Enclosures and Skylights" and "Glazed Enclosures and Greenhouses." Domes are built with tubular aluminum framing, thermoformed cast acrylic panels, and aluminum connections that eliminate exposed clips, lugs and bolts. Ickes-Braun Glasshouses, Inc., 1733 N. Western Ave., Chicago, Ill. 60647.

On Readers' Service Card, Circle 208

Steel Scene

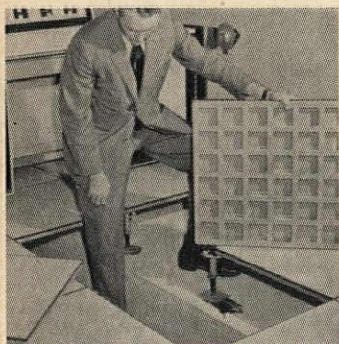


Booklet called "Steel Abstracts for Construction" is first issue of a new abstracting service. It includes 53 abstracts of articles from 18 U.S. and foreign technical publications, divided into 4 categories: research and design, buildings, bridges, and miscellaneous

structures. Complete table of contents. 24 pages. Committee of Structural Steel Producers, American Iron and Steel Institute, 150 E. 42 St., New York, N.Y. 10017.

On Readers' Service Card, Circle 209

Down Under



All-steel floor system for rooms requiring underfloor access and plenums comprises 2' x 2' standard panels and adjustable-height pedestals. A stringer system for increasing lateral stability is also manufactured. Brochure contains cutaway views, installation details and specifications. 8 pages. Tate Engineering, Inc., 516 S. Eutaw St., Baltimore, Md. 21201.

On Readers' Service Card, Circle 210

Doors/Windows

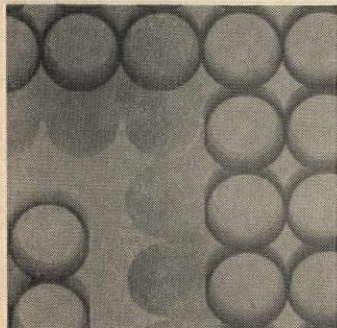
Controlled Doors

Five systems for automatic door opening include control mechanisms concealed under floor mats, control by photoelectric beams or by manually operated switches. Charts aid in selection of the system; accessories are cataloged. 14 pages. Norton Automatic Door Operators, 372 Meyer Rd., Bensenville, Ill 60106.

On Readers' Service Card, Circle 211

Electrical Equipment

Small Cylinder Ceiling

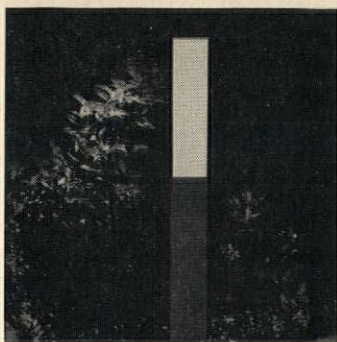


A grid of 1" diameter acrylic plastic rings designed for sus-

pended luminous ceilings diffuses light and cuts down glare from fixtures placed above it. Standard 2' x 2' panels are locked together with plastic clips to conceal seams. Rings can be open with interlocking edges, or bonded at the top to a plastic sheet for closed ceilings. Leaflet describes the two systems, gives short specs and hanging details. 4 pages. United Lighting and Ceiling Co., 2828 Ford St., Oakland, Calif. 94601.

On Readers' Service Card, Circle 212

Skinny Silhouettes



A series of lamps for lighting gardens and walkways has a clean, linear look. Slim aluminum posts finished in matte black enamel range between 10" and 16' high. They support fixture arms that show a minimum of translucent white plastic lens profile. Some designs incorporate the light into the post. Photoelectric controls for automatic on-at-dusk, off-at-dawn lighting are optional. Other post- and wall-mounted units are also shown in attractive brochure with photos, dimensioned drawings, and lamp wattages. 20 pages. Prescolite Manufacturing Corp., 1251 Doolittle Dr., San Leandro, Calif.

On Readers' Service Card, Circle 213

Furnishings

Cumulative on Cumuloft

Cumuloft nylon carpet fiber is examined in 24-page brochure

—from the multilobular shape of its cross-section (resulting in elimination of sheen and appearance of soiling) to a chart of its general properties, and a description of an innovational and economical dyeing process that permits two or three colors in one bath. This is a technique worth thinking about. Chemstrand, 350 Fifth Ave., New York, N.Y.

On Readers' Service Card, Circle 214

On an Even Keel



A four-page brochure illustrates and states specifications for settees, tables, and chairs—all with metal bases available in various finishes. Of particular interest is a tablet armchair that has a pedestal base with a 4° bevel, so that it can remain vertical on a sloping grade, such as might be found in an auditorium or lecture hall. Chicago Hardware Foundry Co., 2500 Commonwealth Ave., N. Chicago, Ill. *On Readers' Service Card, Circle 215*

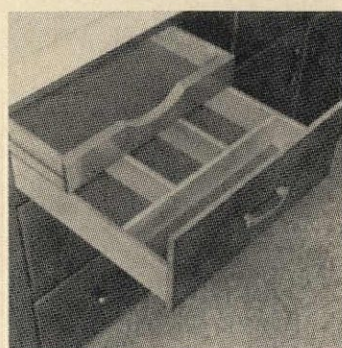
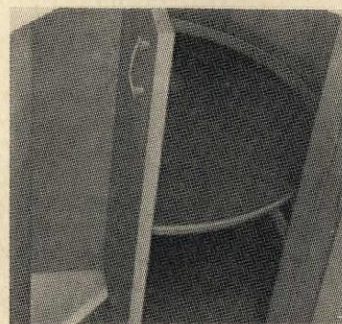
Have a Harter



A fold-out brochure introduces the "Forum" seating and table group. Four seating units and two tables have a common base of high-tensile steel rods (mirror chrome finish) arranged in a "diaxial" pattern with electric arc welded joints. Tables are 14" high, with 24" and 32" square tops in polished clear plate glass, solar bronze glass, white Italian marble, and white

onyx. Photos, specifications. Harter Corp., Sturgis, Mich. *On Readers' Service Card, Circle 216*

Wood Kitchens



Special-purpose drawers, swivel cabinets, adjustable shelves, accessories, and a large variety of cabinet sizes (all with beveled edges) are suggested for efficient kitchen planning. Catalogue features some real cute kitchens, but you can also get plain good design. Measurements, specifications. Kemper Bros., Inc., Richmond, Ind.

On Readers' Service Card, Circle 217

Chandeliers To Eat By

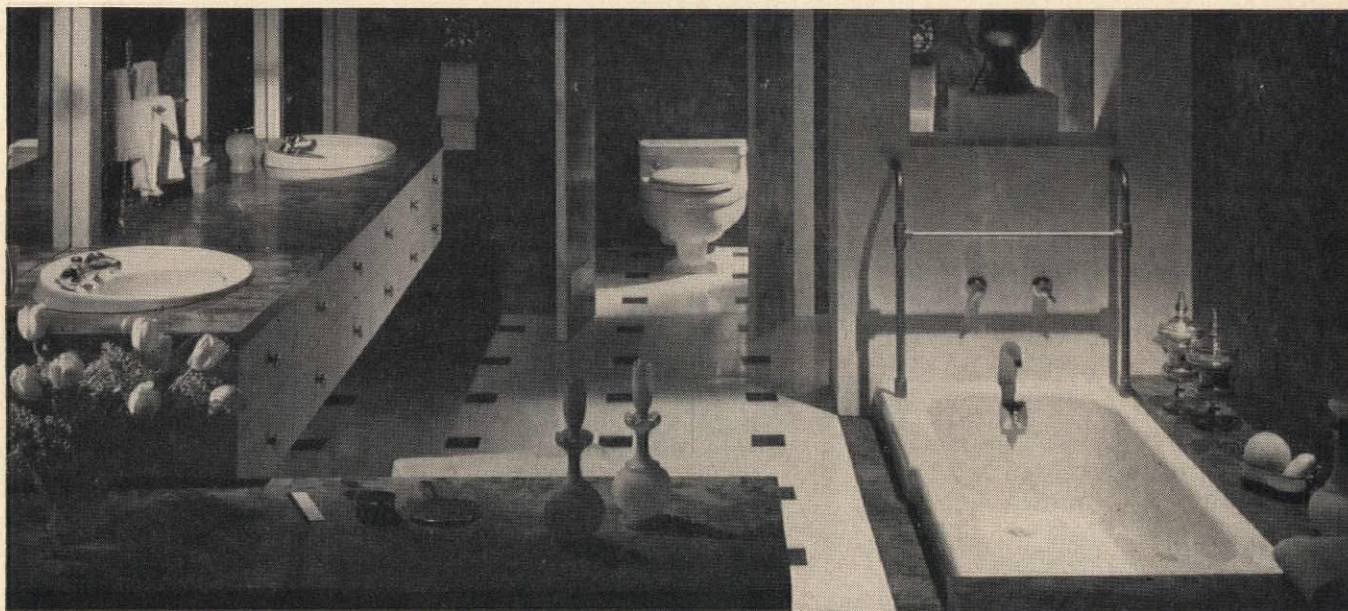
If you want to know where all those restaurant chandeliers come from, this is your catalogue. The catalogue also contains information on NL's custom design and engineered lighting consultant services for individual designs. Color photos, specifications. NL Corp., 527 Madison Ave., New York, N.Y.

On Readers' Service Card, Circle 218

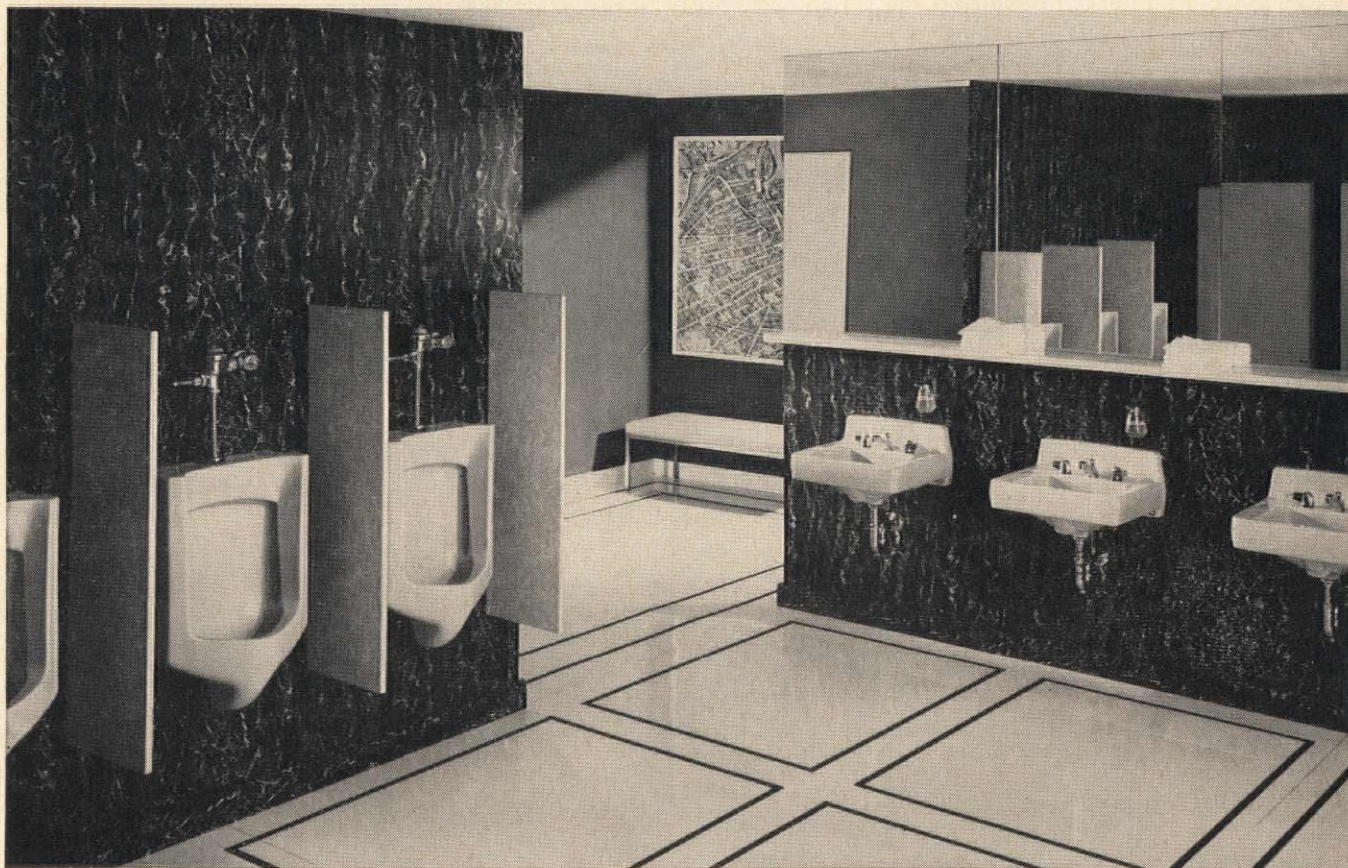
Flood Control

Two basic types of "Cylinderlites" are shown, each available in three mountings (surface, wall, and pendant) and four finishes (baked white enamel, satin aluminum, anodized pale gold, and anodized statuary bronze). One type uses a black Alzak reflector, eliminating

Continued on page 96



Fathers and sons from homes like this...



...appreciate offices and schools furnished like this

Eljer's new commercial fixtures are a refreshing departure from the ordinary "institutional" look. Their graceful lines and warm colors take their cue from Eljer's celebrated Master Crafted residential fixtures. Their advanced styling allows the architect greater latitude in washroom design—and they cost no more than conventional makes. Their upkeep is nominal... no hard-to-clean nooks and crannies. The acid-resistant surface provides easy maintenance and protection of your investment for years.

Get the entire story. Call your Eljer representative or write Wallace-Murray Corporation, Eljer Plumbingware Division, Dept. PA, P.O. Box 836, Pittsburgh, Pa. 15230.



ELJER
SINCE 1904 FINE PLUMBING FIXTURES

Living proof it's waterproof!



FOAMGLAS[®] roof insulation is completely waterproof. See for yourself. Send for your free FOAMGLAS planter.*

We made this little conversation piece for you out of FOAMGLAS Cellular Glass Roof Insulation. We're offering it—complete with palm plant—so you can put it on your desk, water the plant as often as you need to (or want to) and see for yourself: our claim holds water. FOAMGLAS is absolutely waterproof. It's the only completely waterproof insulation.

All other roof insulation will absorb moisture if the roof leaks or if vapor migrates from within the building. That can mean expensive repairs or replacements. FOAMGLAS stays dry and always keeps its original efficiency.

FOAMGLAS is guaranteed for 20 years. Once it's down on your client's roof, he's protected.

Send for your free FOAMGLAS planter. And learn about the new bevel-edged FOAMGLAS-BOARD.

In Western Europe, Foamglas[®] cellular glass insulation is manufactured and sold by Pittsburgh Corning de Belgique, S.A., Brussels.

Pittsburgh Corning Corporation
Department PP-46
One Gateway Center
Pittsburgh, Pa. 15222

- ☐ Please send "Living Proof" Foamglas planter.
☐ Please have your representative call.

Name _____ Title _____

Firm _____

Address _____

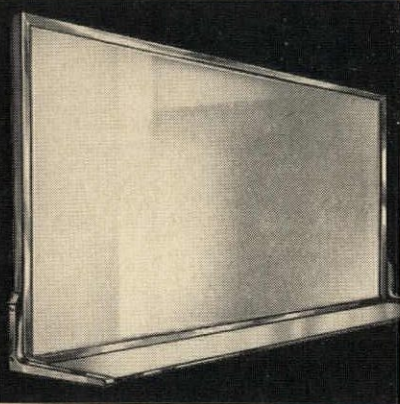
City _____ State _____ Zip Code _____

*Due to customs regulations, offer good only in continental United States.

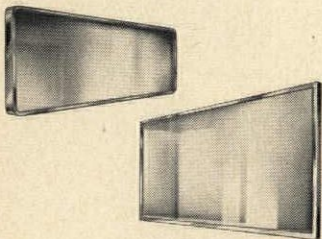
PITTSBURGH **PC**[®] **CORNING**

On Readers' Service Card, circle No. 399

SOMETHING TO LOOK INTO



*if you
specify
mirrors*



For selecting and...specifying mirrors, this easy-to-use file folder can serve as a quick, convenient reference. Each FM mirror model is illustrated, carries complete size range, and includes specification information. Write today requesting the number of file folders needed for your office.



See us in Sweet's

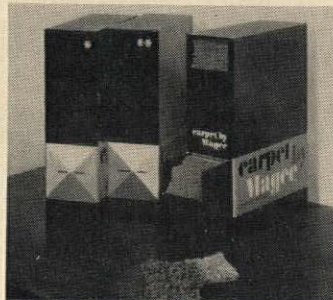
Faries-McMeekan, Inc.
P.O. BOX 35, ELKHART, INDIANA 46514

Continued from page 92

spill, the other a baked matte black coating, eliminating surface glare. Specifications, watt curves, ordering chart. Gotham Lighting Corp., 37-01 31st St., L.I. City, N.Y.

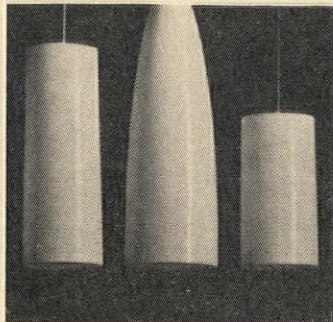
On Readers' Service Card, Circle 219

Bookshelf of Carpets



Three neat boxes catalogue Magee carpets by color—"warm," "cool," and "natural"—with 40 3" x 5" cuttings in each box. Samples have been labeled with swatching in mind: They can be sliced into smaller pieces, each still backed with all pertinent data. Index contains the complete range of wool, acrylic, nylon, polypropylene, and sponge-rubber-backed carpets. Price is \$20 per set to professionals. Magee Carpet Co., 295 Fifth Ave., New York, N.Y.

Cylinders and Such



Glass fiber fixtures in varied cylindrical shapes are available as single fixtures or in combination, and as wall lamps. Fixture spacers (four types) are of oil-treated walnut; shades in five basic colors. Also shown is a collection of stone-ware table lamps. Bostlund Industries, Inc., Batavia, N.Y.

On Readers' Service Card, Circle 220

Can't Cap Caprolan

A brochure on Caprolan nylon carpets claims "a rainbow of vibrant colors" that are "locked in to stay," resistance to abrasion, shedding, and fuzzing

STANLEY

Automatic Sliding Entrances

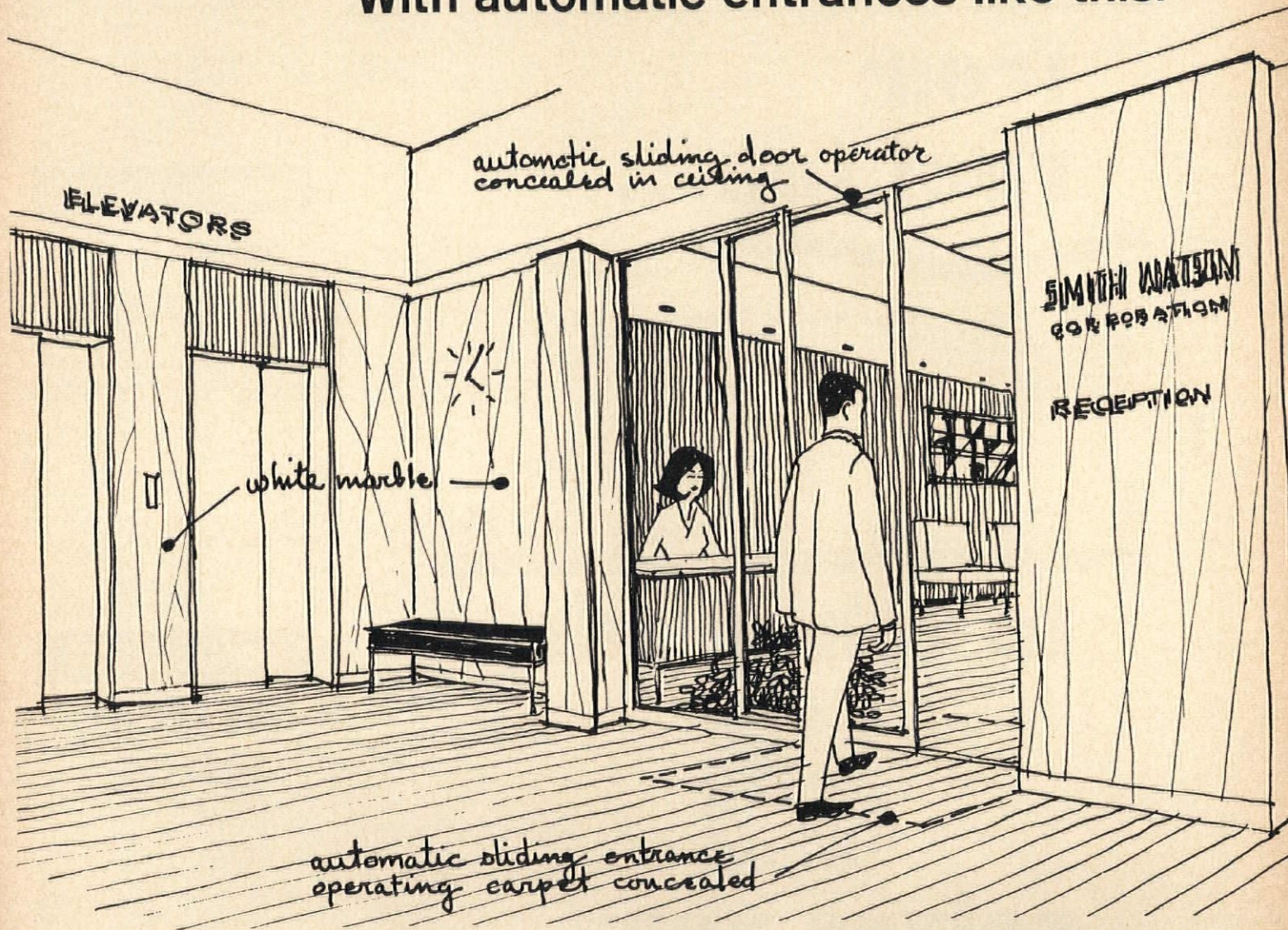
Call your nearest
Stanley Magic Door Distributor.

ARIZONA	NEW YORK
Phoenix Stanley Building Products, Inc. 4836 North 16th Street 602, 279-0374	Buffalo A. O. Stillwell Co. 85 Great Arrow Ave. 716, 877-4300
CALIFORNIA	Rensselaer
Los Angeles Hay Agency 4324 W. Jefferson Blvd. 213, 731-0871	Crawford Door Sales Albany Company, Inc. Sherwood Park 818, 477-9374
Sacramento Fontaine Door Co. 200 27th St. 916, 442-1842	Rochester The Maurer Co. 31 Richmond St. 716, 454-4990
San Diego Hay Agency 1460 Island Ave. 714, 234-6648	Syracuse B. R. Johnson & Son, Inc. 5900 South Salina St. 315, HO 9-3244
San Mateo Stanley Door Operating Equipment 4007 Pacific Blvd. 415, 349-2501	Woodside, L.I. Joseph Shaw 61-10 34th Ave. 212, 651-6363
COLORADO	OHIO
Denver Builders Service Bureau 1221 Bannock St. 303, TA 5-5244	Cincinnati Jed Products Company 4452 Sycamore Road 513, SY 1-3273
CONNECTICUT	Cleveland
Hartford (exchange) The Stanley Sales Company 95 Hampton Avenue Needham Heights, Mass. 203, CH 9-6226	Jed Products Company 8616 Garfield Blvd. 216, DI 1-1146
FLORIDA	Columbus
Miami Chuck Taylor, Inc. 270 N.E. 183rd St. 305, 624-2688	Jed Products Company 865 W. King Ave. 614, 291-4267
Orlando William A. Slater Co. 723 Brookhaven Drive 305, 423-3680	OKLAHOMA
GEORGIA	Oklahoma City
Doraville Hatcher Sales Company 3596 Oakcliff Road 404, 451-6211	Murray R. Womble Co. 121 N.E. 26th St. 405, JA 5-7417
HAWAII	Tulsa
Honolulu Theo. H. Davies Co., Ltd. P. O. Box 3020	Murray R. Womble Co. 216 East 16th St. 918, LU 4-2414
ILLINOIS	OREGON
Elk Grove Village Jed Products Company 239 King St. 312, 439-8080	Portland Bahr Automatic Door, Inc. 4075 N. Interstate 503, 282-4547
Rock Island Jed Products Company 312 20th Street 309, 786-4576	PENNSYLVANIA
INDIANA	Blawnox
Indianapolis Jed Products Company 3529 N. Hovey 317, WA 4-2646	Pittsburgh Jed Products Company 313 Freeport Road 412, ST 1-3666
IOWA	Harrisburg
Des Moines The Roland Company 2920 S.W. 9th St. 515, AT 3-0409	Hershey's, Inc. 1513 N. Cameron St. 717, CE 8-7331
KANSAS	King of Prussia
Hutchinson Supply Service, Inc. 1326 E. Avenue A 316, 663-9111	The Sellers Company 396 E. Church Road 215, CH 8-1806
Kansas City, Mo. Edelman-Lyon Company 325 W. 80th Street 816, EM 3-2460	TENNESSEE
LOUISIANA	Memphis
New Orleans A. Wylie McDougall Company, Inc. 909 So. White St. 504, 822-4100	Maury and Company 357 Cumberland Ave. 901, GL 2-7301
MARYLAND	Nashville
Baltimore G. W. Blanchard Co., Inc. 857 Park Ave. 301, SA 7-0511	John W. McDougall Co. 41st & Indiana Avenues 615, 297-3595
MASSACHUSETTS	TEXAS
Needham Heights The Stanley Sales Company 95 Hampton Avenue 617, 444-7768	Dallas Automatic Door Control Co. 1175 109th St. Grand Prairie 214, AN 2-1474
MICHIGAN	Houston
Grand Rapids Jed Products Company 3015 Madison, S.E. 616, 243-9163	Shelton Greer Co., Inc. 3025 Maxroy Street 713, 864-4487
Royal Oak Jed Products Company 31270 Stephenson Hwy. 313, JO 6-7922	Lubbock Door Automation Sales & Service 308 East 34th St. 806, SH 4-7584
MINNESOTA	San Antonio
Minneapolis Pella Products 929 Washington, South 612, FE 5-4134	Samuels Glass Company 221 Newell Ave. 512, 227-2481
MISSOURI	UTAH
Bridgeton Thos. J. Finan Co., Inc. 12409 St. Chas. Rock Rd. 314, 739-0130	Salt Lake City Building Specialties Co., Inc. 1340 South First West 801, 484-7882
MONTANA	VIRGINIA
Great Falls The House of Glass 811 First Ave., N. 406, 445-1371	Richmond Tranco Sales Corp. 2515 Grenoble Road 703, 282-6936
NEBRASKA	WASHINGTON
Omaha The Roland Co. 1911 1/2 Military St. 402, 556-8820	Seattle Automatic Doorways 4401 Wallingford Ave. N. 206, ME 2-5686
NEW MEXICO	Spokane
Albuquerque Welch-Erwin Corp. 4019-C Edith Blvd., N.E. 505, 344-3547	The Corwell Co. South 123 Wall Street 509, RP 7-1575
	WISCONSIN
	Milwaukee
	Jed Products Company 11605 W. Bluemond 414, SP 4-1350
	DIST. OF COLUMBIA
	Washington
	G. W. Blanchard Co., Inc. 6210 Chillum Place, N.W. 202, TU 2-4210
	CANADA
	Toronto, Ontario
	Pikington Bros. Ltd. 55 Eglinton St., E. 416, HU 7-2471
	No. Vancouver, B. C.
	Nor-Wes Contract Hard. 1075 Marine Drive 604, 988-5221

Who helps you to say
"Welcome" impressively?

Stanley does.

With automatic entrances like this.



The people you design offices for want doorways that create favorable first — and lasting — impressions. Get information on Stanley automatic sliding entrances. Write us for Folder No. M67-COM. Look us up in Sweet's. Or check under "Door Operating Devices" in the Yellow Pages for the name of the Stanley distributor nearest you. Stanley offers a complete line of famous MAGIC-DOOR® operators (pneumatic, hydraulic, electric), controls and accessories for doors that swing, slide or fold. Stanley Door Operating Equipment, Division of The Stanley Works, New Britain, Connecticut.

THE
STANLEY®
WORKS

CONSULT YOUR NEAREST MAGIC-DOOR DISTRIBUTOR LISTED AT LEFT

(even by spiked shoes), resilience, and easy maintenance. The brochure is also designed to encourage installations in areas that are not usually carpeted—schools, hospitals, restaurant kitchens—by giving statistics and test results on maintenance and sanitation in favor of carpeting. Allied Chemical Corp., Fibers Div., 1 Times Sq., New York, N.Y. On Readers' Service Card, Circle 221

A Variety of Vinyls

A book of samples shows Colo-

vin elastic-supported upholstery fabric. More than 20 patterns are shown, covering a range of textures, unusual solid colors, two wood patterns (walnut leather!), and a crewel-embroidered design. Manufactured to a 54" width, the fabric is said to be pliable enough to eliminate folds of pleats in tailoring. Besides being waterproof and easily maintained, the manufacturer also claims the fabric is resistant to abrasion, peeling, and fading. Columbus Coated Fabrics Co., Columbus 16, Ohio.

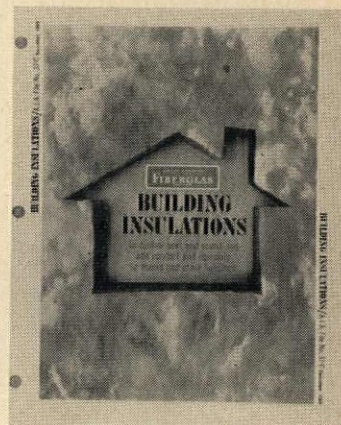
On Readers' Service Card, Circle 222

Insulation

Wrap it Up

Insulation design booklet for residential work is illustrated with line drawings, charts, and maps. Selection guide describes the types of insulation available; charts give "U" values and heat resistance for different types of construction; maps show summer-winter design temperatures in the U.S. Booklet also show how to calculate heat loss, heat gain, and oper-

ating costs for heating and cooling. Condensation control and noise control are discussed.



16 pages. Owens-Corning Fiberglas Corp., Home Building Products Div., National Bank Bldg., Toledo, Ohio 43601.

On Readers' Service Card, Circle 223

Sanitation/Plumbing

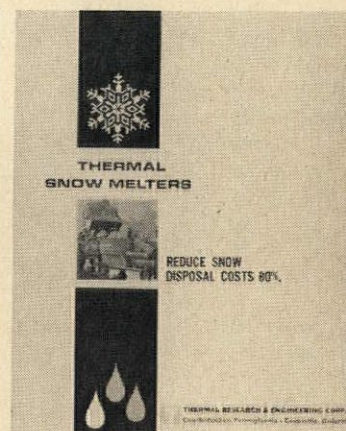
Patient's Lavatory

A lavatory unit for hospital or examining rooms includes cabinet with mirror door, overhead light, towel dispenser, soap dispenser, and electric outlet. Wall-hung or flush-mounted, the unit is trimmed in aluminum with stainless-steel sink and back-splash. Other surfaces are vinyl-coated steel with wood-grain finish. Booklet includes specifications, detail drawings, and photos. Market Forge Co., Everett, Mass. 02149.

On Readers' Service Card, Circle 224

Special Equipment

No-Snow Job



Booklet shows the operation, advantages, and performance capacities of mobile, semimobile, and stationary snow melters. Examples show how to size melting equipment and calculate cost comparison with

from roof top...

ADDEX MANUFACTURING CO.

DEPT. 145 • P. O. BOX 292 • WICKLIFFE, OHIO 44092

☐ Please RUSH me the latest Addex Waterproofing Specifications and Data.

MY NAME _____

POSITION _____

ADDRESS _____

CITY _____

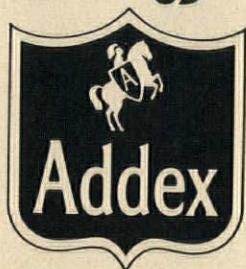
STATE _____

ZIP _____

A-5362



to sub-grade,



solves your Waterproofing Problems!

ADDEX MFG. CO.
P. O. Box 292
Wickliffe, Ohio

ROOFING / DAMP-PROOFING / WATERPROOFING

On Reader's Service Card, circle No. 321

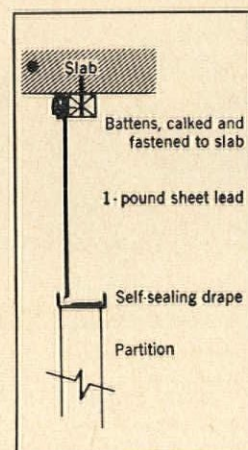
LEAD establishes a new sound barrier

Today, foreign sounds invading your privacy need not be tolerated in office or factory. Thin-sheet lead, used as a plenum or over-ceiling barrier effectively reduces noise transmission from one area to another. Tests have confirmed that thin-sheet lead used as a plenum sound barrier as in the State Street Bank's new Boston headquarters (illustrated below) is acoustically superior to any other conventional building material.

The movable partitions in this \$30-million concrete and glass tower were terminated at a hung ceiling height, creating a plenum space immediately above. Then, thin sheets

of non-porous, naturally limp lead were hung from the slab and dropped to the partitions below. The result was unmatched sound attenuation, substantially reducing the transmission of air-borne noise. And thin-sheet lead is workable . . . cuts easily simplifying installation around ducts, piping and conduits. Furthermore, lead is economical and salvageable.

For additional information write for our Practical Application of Sheet Lead For Sound Barriers brochure. Dept. N-4, Lead Industries Association, 292 Madison Ave., New York, New York 10017.



LEAD INDUSTRIES ASSOCIATION, INC.

On Readers' Service Card, circle No. 374

Look Ahead with Lead

Gypsum Partition & Lead Barriers: Wallboard Construction Co., East Natick, Mass.

Office Planning & Design: Rodgers Associates, New York

Associate Architects: Eggers and Higgins, New York





Another Webster installation
Sheraton-O'Hare
Motor Hotel
Des Plaines, Illinois

Three separate Webster area paging and public address systems are used at O'Hare. A small intercom system is also part of the installation.

FROM WEBSTER: all the advantages of a custom installation with standard components



Webster sound components are cased in a free-standing equipment rack on each floor. Permits flexible control of sound for each area.

Webster Sound gives your clients the widest choice of standard voice and program distribution components available today. And because each is physically and electronically matched to the other, it's easier and more economical to build a custom system.

Webster components provide multiple sound services in a single system. If the project calls for it, you can blanket a multi-story building with background music, page any selected area, monitor unsupervised locations, signal, or converse with two-way intercommunications. A Webster sound system can be planned to provide for today's needs, yet expanded tomorrow without making present equipment obsolete.

Modular design of components permits custom assembly of the features required, in either free-standing or wall-recessed equipment racks. Easy accessibility means faster servicing or system changes.

See your Webster Electric distributor* on your next project. Let him plan in a custom installation with standard components. Or, write direct for details.

*Listed in Yellow Pages

Free — portfolio of case history reports covering large and small installations. Illustrates and describes intercommunication problems solved with modern Webster equipment.

COMMUNICATIONS DIVISION

WEBSTER ELECTRIC
RACINE · WIS

In Canada: Webster Electric (Canada), Ltd., Kitchener, Ontario

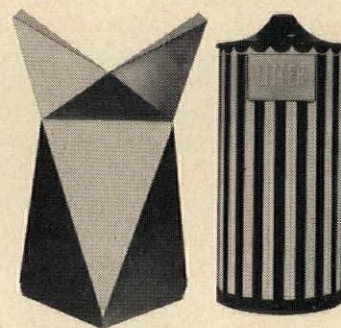
PRIVATE DIAL TELEPHONE • LOUD-SPEAKING INTERCOM • SOUND & PAGING SYSTEMS • TEACHING LABORATORIES

5101

On Readers' Service Card, circle No. 432

truck hauling. 12 pages. Thermal Research & Engineering Corp., Conshohocken, Pa.
On Readers' Service Card, Circle 225

Big and Little Litter Bins



Aluminum litter receptacles in varied sizes and geometric designs are painted in bright colors. Units are post-mounted, free-standing, or anchored. Data sheets give sizes, photos, and capacities. Jackson Co., P.O. Box 104, Pomona, Calif.
On Readers' Service Card, Circle 226

Public Seating

Catalog and data leaflets give information on fully upholstered and semiupholstered, wooden-back seating for theaters, auditoriums, etc. Seats may be mounted on sloping or level floors and can be equipped with tablet arms or back-mounted writing tables for lecture halls. There are standard choices of fabrics and enameled colors for exposed metal parts. School seating in fiberglass or hardwood, and tables for schools are also included. Photos, selection tables and specifications. Heywood-Wakefield Co., Menominee, Mich. 49858.

On Readers' Service Card, Circle 227

Post and Rail

Aluminum railing systems are available in combination with medium or dark fruitwood. Posts and rails are manufactured in many profiles and assembly patterns, including the "Ribbon Baluster" (shown). Pamphlet illustrates railing systems with photos, drawings, details, and standard catalog information on sizes, etc. 16 pages. Newman Brothers, Inc., Center Hill Ave., Cincinnati, Ohio, 45216.

On Readers' Service Card, Circle 228

Ironbound Continuous Strip Floor System—Individual edge-grain flooring strips are interlocked with steel splines and embedded in mastic for stability, smoothness and uniform resilience. Underlayment of $\frac{1}{2}$ " cork gives added cushioning.

Robbins **Ironbound**® Northern Maple Floor guarantees resilience, stability, low-cost upkeep



Cleburne County Gymnasium, Heflin, Ala.
Architects: Chas. H. McCauley and Assoc., Birmingham, Ala.
Installer: E. P. Cuthrell Flooring Co., Birmingham, Ala.

In gymnasiums, auditoriums and many other areas, the Robbins IRONBOUND floor system gives maximum satisfaction. Installation of MFMA Northern Hard Maple edge-grain flooring by this superior method (see photo above) is made and guaranteed by experienced, franchised applicators, and backed by Robbins.

From coast to coast, Robbins IRONBOUND Floors give trouble-free service and low-cost upkeep in schools, colleges and other institutions with exacting floor requirements. For detailed data on floor systems and name of nearest authorized Robbins installer, write: Robbins Flooring Company, Dept. PA-466, White Lake, Wisconsin. See our catalog in Sweets.

MAIL
FOR DATA

ROBBINS FLOORING COMPANY

Dept. PA-466 White Lake, Wisconsin 54491

- ☐ Send complete information
☐ Advise name of authorized installer in this area

Name _____

Firm _____

Address _____

ROBBINS
flooring company
 Subsidiary of E. L. Bruce Co., Memphis, Tenn.

Terrafino

**"INSTANT" TERRAZZO
SAVES TIME AND MONEY!
... is easier to design with**



TERRAFINO is the original 12"x12"x3/16" flexible tile with real #1 and #2 marble chips permanently bedded in a tough epoxy plastic matrix. The TERRAFINO floor pictured above (Calico Kitchen Restaurant, Cheltenham, Pa.) is a typical example of the benefits to be derived from this modern way to install terrazzo.

TERRAFINO SAVES TIME

It is rapidly installed in the same manner as resilient tile—with a trowelled mastic. This terrazzo floor can be installed and ready for traffic in one working day!

TERRAFINO SAVES MONEY

In addition to the savings involved in cutting a week or more off conventional terrazzo installations, TERRAFINO saves money two other important ways:

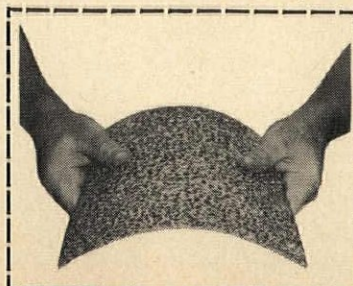
1. It usually costs less than conventionally placed terrazzo.
2. It maintains like terrazzo—for far less than resilient tile.

WIDENS DECORATIVE SCOPE OF TERRAZZO

TERRAFINO can be used with conventional vinyl feature stripping for many practical and decorative effects.

Learn more about how TERRAFINO flexible terrazzo tiles may solve your flooring problems. Send coupon for samples, descriptive literature and specifications to:

TERRAFINO COMPANY, P.O. BOX 52, CARLSTADT, NEW JERSEY



TERRAFINO CO., P.O. BOX 52, CARLSTADT, N.J.
Please send ☐ Samples ☐ Literature
on TERRAFINO to:

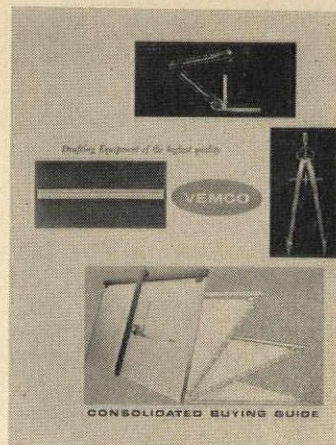
Name _____
Firm _____
Street _____
City _____ State _____ Zip No. _____

On Readers' Service Card, circle No. 425

Burning Issue

Incinerators, their burners, parts, accessories, and construction are described in a booklet that includes photos, detail drawings, and selection data. 12 pages. The Donley Brothers Co., 13932 Miles Ave., Cleveland, Ohio 44105.
On Readers' Service Card, Circle 229

Tools of the Trade



Catalog illustrates drafting machines for tilted boards, for blackboard mounting in the classroom, and for standard use. Ruling arms and drafting instruments are also included. 16 pages. V. & E. Manufacturing Co., 766 S. Fair Oaks Ave., Pasadena, Calif 91105.

On Readers' Service Card, Circle 230

Why Do It Yourself?

Catalog illustrates templates for architects and engineers in a wide variety of shapes, symbols, and scales. In addition to templates for architects, there are spacing and isometric templates, electrical, mechanical, piping, lettering, and general shape templates—a total of 364, illustrated with photos. Alvin & Co., Inc., 611 Palisado Ave., Windsor, Conn.

On Readers' Service Card, Circle 231

Finns Like It Hot

The "dry"-steam sauna bath that originated in Finland can be bought in a package for installation inside a building. Custom work is also available. Data sheets give sizes, tion on sauna rooms, heaters, prices, and operating information and accessories. Arctic Sauna, 1105 Colonial Way, Somerville, N.J.

On Readers' Service Card, Circle 232

Tear Out this Quartette Total Integrated Ceiling Page

THEN MAIL IT. IT'S THE MOST REWARDING COUPON YOU'LL EVER USE.

You tell us what your newest project requires in interior environment control. By hurry-up return mail we'll detail how it can be provided by Quartette, the world's only total integrated ceiling. Check your needs:

LIGHTING:

- ☐ Up to 600 footcandles
- ☐ No glare
- ☐ 45-degree shielding from both directions
- ☐ Proper 72-77° lamp operating ambient
- ☐ 115 percent light utilization
- ☐ Maximum lamp life
- ☐ Constant color
- ☐ Subtle, comfortable, multi-directional, unobtrusive, equal to task
- ☐ Flexibility for future increases without ceiling alteration

HEAT-OF-LIGHT USE:

- ☐ Maximum adaptability to any air induction system
- ☐ Efficiency that can provide a building's total space heating requirements
- ☐ Full utilization of generated heat

LIGHT HEAT REMOVAL:

- ☐ Removal of light heat before it can enter room space
- ☐ No blowing of light heat into occupied space
- ☐ Constant air motion that cleans lamps and ceiling parts.

ACOUSTICS:

- ☐ Overall ceiling sound absorption of 80 percent, attenuation 39.3 decibels

- ☐ Excellent sound-block provision at plenum and partition installation points
- ☐ No sound-transmitting louvers, vents in walls and doors
- ☐ Floor-to-ceiling sound seal in any enclosed space

AIR CONDITIONING:

- ☐ Full 180° noiseless, draft-free diffusion, no stagnant or cold spots
- ☐ Overall ceiling diffusion without blowing lamp heat into room space
- ☐ Complete air-exchange control within every ceiling module

PARTITIONING:

- ☐ New-concept freedom in arranging space
- ☐ Utilizing standard partitions
- ☐ Efficient, no ceiling damage in erecting and dismantling — using only a screwdriver
- ☐ Glazing directly into the ceiling — even all-glass and glass-top partitions
- ☐ Clean-appearing, no air circulation openings
- ☐ No "isolation" sensation

MAINTENANCE AND

OPERATION:

- ☐ Self-cleaning ceiling
- ☐ Simple, no-tool plenum access via every module
- ☐ Practically nil maintenance requirements
- ☐ All permanent, non-wrap metal construction
- ☐ All-electric, with years-longer complete utilization of generated energy
- ☐ All-round efficiency that offset original investment in a few years

APPEARANCE:

- ☐ In harmony with interior design
- ☐ Bold, fascinating texture
- ☐ Modular; custom sized to fit any interior space
- ☐ Beautiful — like a spacious outdoor sky

AVAILABILITY:

- ☐ As you require. Mail this coupon for details. Quartette, the total integrated ceiling—environment second only to nature's

LUMINOUS CEILINGS INC.

3701 N. Ravenswood Ave.
Chicago, Illinois 60613
312-935-8900



On Readers' Service Card, circle No. 379

Extinguishing Equipment

Catalog contains specs, photos, dimension charts and detail drawings of interior fire protection equipment for commercial, industrial and institutional buildings. Hose cabinets, fire extinguishers, standpipe systems, reels and other accessories are included. 30 pages. Potter-Roemer, Inc., 2856 Leonis Blvd., Los Angeles, Calif. 90058.

On Readers' Service Card, Circle 233

Surfacing

Trowel-On Flooring

Various plastic matrices are mixed with color "flakes," marble chips, etc., to make seamless flooring suitable for light- and heavy-duty interior use, exterior decks, and hospitals. One mix contains acetylene carbon black for dissipating static electricity in operating rooms. These plastic terrazzos are self-bonding, nonslip, nonporous, and resilient. Photos, descriptions, and short specs

included. 8 pages. Selby, Battersby & Co., 5220 Whitby Ave., Philadelphia, Pa. 19143. On Readers' Service Card, Circle 234

Tile Styles



Full-color brochure has sections on four major types of "Romany-Spartan" tile: glazed ceramic wall tile for interiors; unglazed vitreous ceramic tile for either interior or exterior; unglazed ceramic porcelain tile for floors or walls; and light-duty glazed ceramic tile. A service for custom-designed tile murals is available. Swimming

pool tile and conductive tile for hospitals are included, along with trim detail charts and short form specs. 16 pages. United States Ceramic Tile Co., 1375 Raff Rd., SW, Canton, Ohio 44710.

On Readers' Service Card, Circle 235

Asbestos-Cement Siding

Asbestos-cement sheets for interior paneling or exterior siding are said to be rot-, rat-, rust-, and termite-proof—and, of course, fire-resistant. The panels are available with flat, ribbed, or striated faces and may either be on-site or factory painted in a choice of 14 standard colors. Installation details, physical characteristics, and suggested uses are given. 8 pages. Atlas Asbestos Co., P.O. Box 221, Ambler, Pa. 19002.

On Readers' Service Card, Circle 236

Volcanic Quarry

Lightweight volcanic stone for interior or exterior veneers is shown in several colors with either sawed or rough face. "Featherrock" has greater cov-

erage per ton and can be waterproofed if necessary. Landscaping "boulders" are also available. Brochure contains photos of buildings, description of properties, and installation instructions. Featherrock, Inc., 6331 Hollywood Blvd., Los Angeles, Calif. 90028.

On Readers' Service Card, Circle 237

Pool Paint

A brief specification for meeting Federal requirements for paint used on concrete swimming pools. Formulations listed for gloss, semigloss, and flat paint. 2 pages. Goodyear Tire & Rubber Co., Chemical Div., Akron 16, Ohio.

On Readers' Service Card, Circle 238

PROGRESSIVE ARCHITECTURE NEWS REPORT

REINHOLD PUBLISHING CORPORATION
430 Park Avenue, New York, N.Y. 10022

EditorJan C. Rowan

Associate EditorE. K. Carpenter

PublisherP. H. Hubbard, Jr.

Advt. Sales Mgr.W. R. Evans, Jr.

Production Mgr.Joseph M. Scanlon

Look to TECO

... for the finest in wood fasteners and building systems

TECO U-GRIP JOIST HANGERS

1/2 the cost of old style hangers

Available for 2x4's to double 2x14's



TECO FAS-LOK BRIDGING

Fastest bridging available ... Installs in seconds

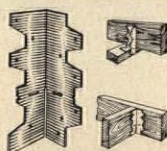
Needs no nails ... Compression type for better performance



TECO ALL PURPOSE ANCHORS

One style anchor simplifies ordering and stocking

Special "bending slots" permit accurate forming of six different shapes



Look at TECO's product diversity

Joist Hangers
Framing Anchors
Floor Bridging
Split Rings
Shear Plates
Truss Plates
Toothed Rings
Post Anchors
Post Caps
Spike Grids
Plywood Supports
Utility Angles
Clamping Plates
Cantilevered Hangers
Siding Fasteners
Pneumatic Nailers
Wall Panel Jigs
Automatic Markers
... all designed for use with wood

Send for FREE Catalog



Over 150 national distributors

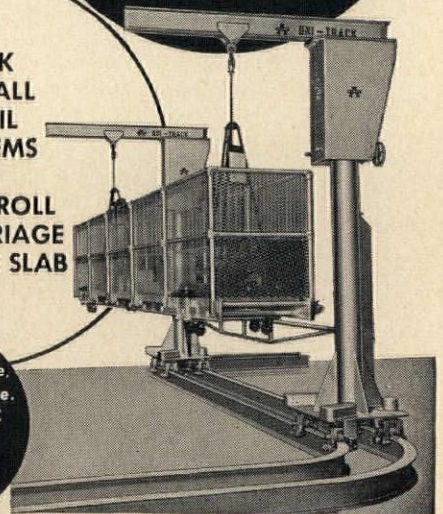
TIMBER ENGINEERING COMPANY
1619 Mass. Ave., N.W., Washington, D. C. 20036

On Readers' Service Card, circle No. 427

"UNI-TRACK" and "CLIMBER" POWERED WINDOW WASHING SYSTEMS

• Illustrated
ROOF DECK
PARAPET WALL
GUARD RAIL
TRACK SYSTEMS
and
FOUR WHEEL ROLL
AROUND CARRIAGE
FOR CONCRETE SLAB

Write for 12-page, illustrated brochure.
ARA W-54-CC
AIA-35-J7
Specifications included



ALBINA ENGINE & MACHINE WKS.

2100 N. Albina Avenue • Portland, Oregon 97227

On Readers' Service Card, circle No. 322

Free 12 page industrial door catalog!



Yours for the asking

A must for your files . . . this is the most comprehensive industrial door catalog ever issued! It contains descriptions, specifications and diagrams of power-operated and manual, single and double, horizontal sliding, bifold, vertical sliding and double-swinging and industrial doors for the control of traffic, handling of material and the elimination of drafts and noise. Write or call for your FREE copy now!



Dept. P-4
69 Myrtle St.
Cranford, N. J.
(201) 272-5100

Doorway specialists since 1878

On Readers' Service Card, circle No. 341

REINHOLD

Authoritative

THEATRES AND AUDITORIUMS
Second Edition

by Harold Burris-Meyer and Edward G. Cole

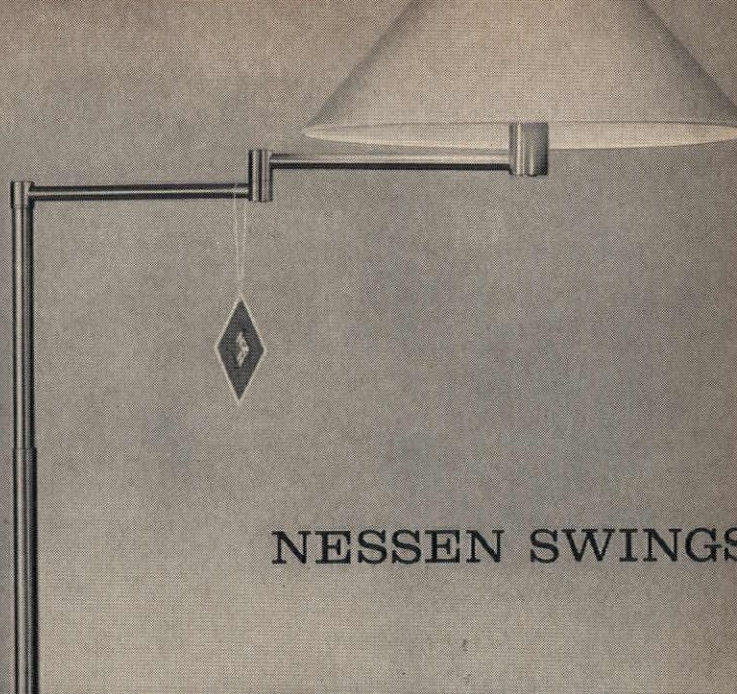
1964 - 384 pages \$22.00

This book makes it possible for anyone concerned with the planning of theatres to understand what constitutes a good theatre and to make his plans accordingly. Intended for both the architect and those who need better theatres and auditoriums, this new and enlarged second edition is the only book which approaches the problem of planning theatres and auditoriums by analyzing the functions which are to be performed within the building. Trends and innovations in theatre form which have become evident since the publication of the first edition are thoroughly examined from an analytical as well as a critical point of view. Profusely illustrated with drawings, photographs, and plans.

Available at your bookstore or write Dept. M-263
REINHOLD BOOK DIVISION,
430 Park Avenue, New York, N.Y. 10022

On Readers' Service Card, circle No. 477

On Readers' Service Card, circle No. 468 ➤



NESSEN SWINGS

The famous swing arm lamp—originated by Walter von Nessen more than 37 years ago—has gained a special reputation among architects, designers, even museums. This versatile lamp is available in nine different standard models for residential and commercial applications.

These lamps are also available with modifications to meet special budget or job requirements. Quality of craftsmanship remains the same.

Nessen lamps are made of solid brass, with standard finishes available in brushed or polished brass or satin chrome over brass.

Write for our latest catalog and reference file.

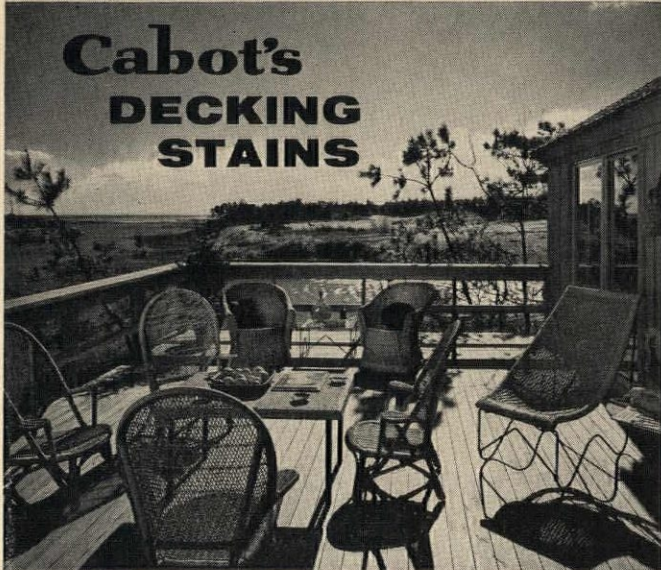
NESSEN LAMPS INC. 317 East 34th St., New York, N.Y. 10017



Nessen
N3
Nessen

New ... for Wood Decking

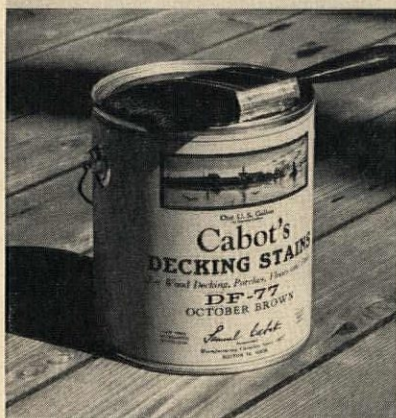
Cabot's DECKING STAINS



Home at New Seabury, Cape Cod, Mass.; architect: Royal Barry Wills & Associates, Boston, Mass.; developer: Emil Hanslin Associates, Melrose, Mass. Cabot's Stains used on Interior and Exterior.

A finish that stands up to heavy foot traffic and severe weathering.

The popularity of wood decking, in demand now as never before for porches, sun decks, patios, etc., requires a finish both durable and decorative. Samuel Cabot Inc. answers this pressing need with a new product, Cabot's Decking Stains. It is a product with a specific purpose . . . protecting, preserving, and beautifying wood surfaces under difficult conditions. Now, for the first time, it is possible to obtain a durable stain finish for wood decking.



- Economical: easy to apply and maintain.
- Will not rub off or track off.
- Alcohol and detergent resistant.
- Suitable for all types of wood.
- Resists cracking, peeling, and blistering.

Available in ten colors: Bark Brown, Smoke Gray, Chelsea Gray, October Brown, Forest Green, Farallon Gray, Presidio Red, Cordovan, Redwood, and Black.

SAMUEL CABOT INC.

428 S. Terminal Trust Bldg., Boston, Mass. 02210

Please send color card and information on Cabot's Decking Stains.

On Readers' Service Card, circle No. 337

ANY SIZE

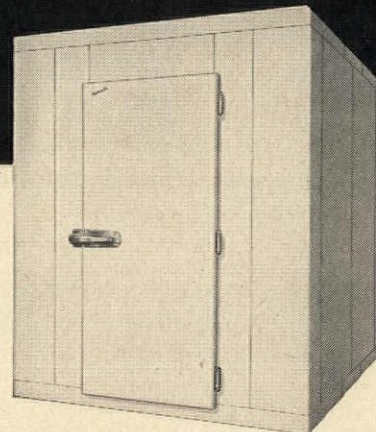
TO FIT ANY SPACE

NORRIS WALK-IN COOLERS, FREEZERS, COMBINATIONS

LIGHT
WEIGHT



as low as
4½ lbs.
per sq. ft.
—reduces
freight costs



Any size . . . to fit any space . . . describes Norris walk-in coolers, freezers, and cooler-freezer combinations, for Norris walk-ins give you complete installation flexibility. Available with or without floors, Norris walk-ins are pre-fabricated in two- and three-foot wall sections, four-foot door sections (7½' high), and can be set up in one-foot increments in any size—in almost any space—in new or existing buildings. A light hammer is the only tool necessary.

The modular panels of Norris walk-ins are all-metal, with no wood to absorb moisture, and extremely lightweight. Standard exteriors are bonderized steel finished in white baked enamel, interiors are 22-gauge metal, with custom exteriors or interiors optional at extra cost. Ideal for every industrial, commercial or institutional refrigeration need, Norris walk-ins can be supplied with the correct self-contained or remote refrigeration equipment to meet any application.

WRITE FOR DESCRIPTIVE LITERATURE!

Norris

NORRIS

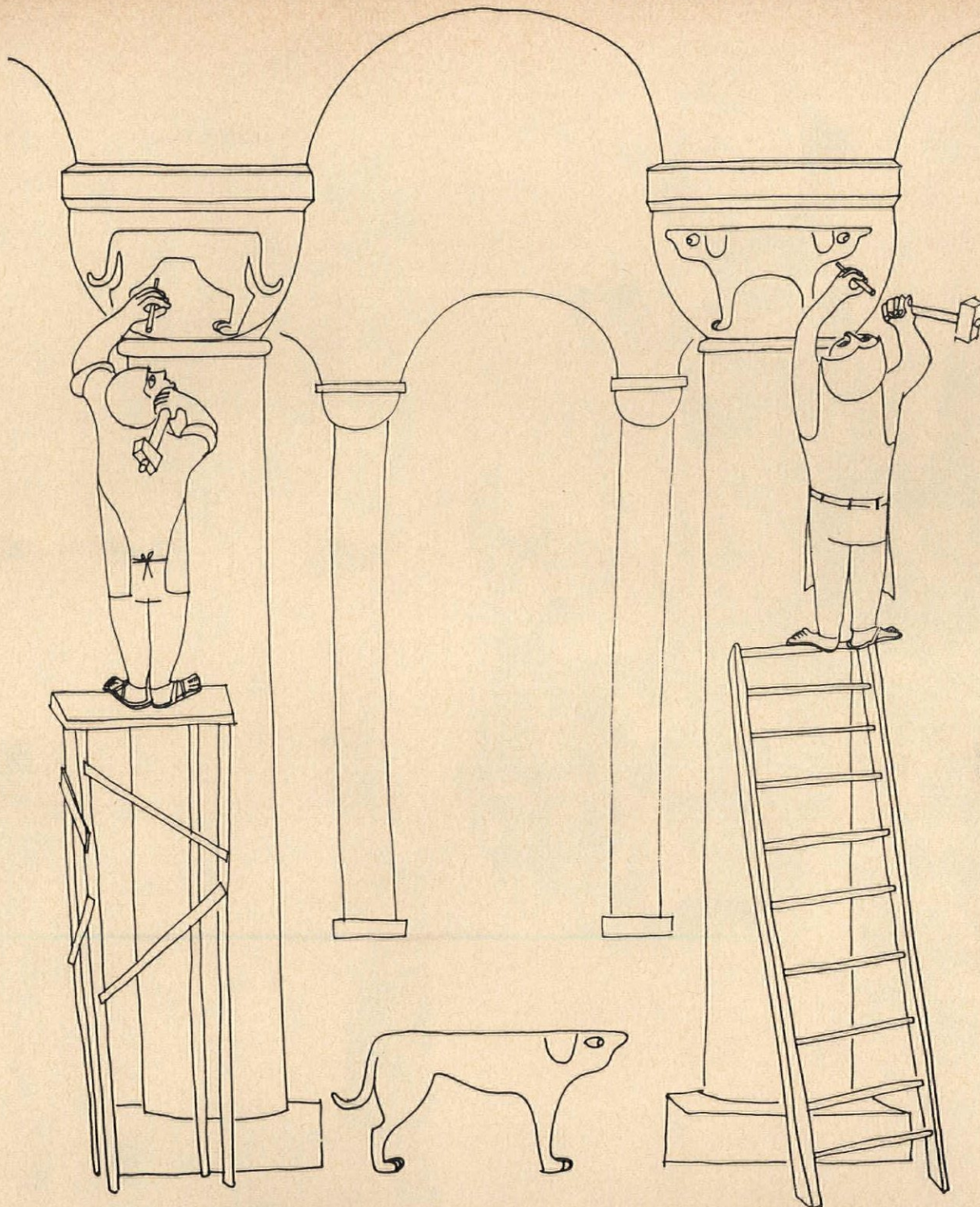


DISPENSERS, INC.

2728 LYNDAL AVENUE SOUTH
MINNEAPOLIS 8, MINNESOTA

NORRIS—THE FIRST NAME IN MILK SERVING AND STORAGE EQUIPMENT!

On Readers' Service Card, circle No. 392



NEXT MONTH IN P/A

There is a growing recognition among architects that housing design must go beyond the element of the unique. The profession recognizes the need to play a more aggressive role in community planning.

*The May issue of **PROGRESSIVE ARCHITECTURE** points up the pressing problems of the architect in assuming a broader responsibility for all kinds of housing—from custom homes to shelters for migrant workers; from vacation houses to mobile homes for older folks.*

*The exciting, colorful May "Houses" issue of **P/A** . . . plus eleven more exciting issues when you fill in the "Subscriptions" section on the Reader's Service Card bound in this issue. (See Table of Contents for page number of Readers' Service Card.)*



In corridors



In classrooms



In washrooms

NO OTHER FIXTURES
CLEAN SO MANY,
SO WELL,
FOR SO LITTLE!

BRADLEY WASHFOUNTAINS

What do you look for in wash fixtures? Space saving? Then look to Bradley. On an average, Washfountains save 25% on floor and wall space. That means, in a given area, they serve many more students than conventional lavatories.

Want sanitary fixtures? Washfountains are foot-operated. Hands touch only clean running water, never soiled faucets.

Looking to keep costs down? Washfountains serve as many as eight students with one set of plumbing connections, cutting installation costs as much as 80%. And they

cut water consumption a whopping 40 to 80%!

You get a lot to like with Bradley Washfountains. No other wash fixtures clean so many so well, for so little! In 36 and 54-inch diameter circular and semi-circular models, popular two-person Duos, and counter-type fixtures.

For details, see your Bradley representative. And write for latest literature. Bradley Washfountain Co., 9141 Fountain Drive, Menomonee Falls, Wis. 53055.

