

Period Homes

Clem Labine's

Volume 17, Number 4 July 2016

THE PROFESSIONAL'S RESOURCE FOR RESIDENTIAL ARCHITECTURE

PRSRT STD
U.S. Postage
PAID
Long Prairie, MN
Permit No. 67

Period Homes
5720 Flatiron Parkway
Boulder, CO 80301
Change service requested.

2016 PALLADIO AWARDS

HANDCRAFTED
IN AMERICA.



OUR HISTORY MAKES US UNIQUELY QUALIFIED TO HANDLE YOUR PIECE OF HISTORY.

MARVIN HISTORIC

What's the Marvin difference? It's a passion for the smallest detail. Accuracy of historical replications. Local experts, providing unparalleled architectural support. The ability to produce rapid prototypes. Creating concept to completion one-of-a-kind solutions. And Decades of historical project experience. All of this makes Marvin Historic the name to trust for your next historic renovation project. **Start your project by visiting MarvinWindows.Com/Historic.**

MARVIN 
Windows and Doors

Built around you.

©2016 Marvin® Windows and Doors. All rights reserved. ® Registered trademark of Marvin Windows and Doors.

CLICK ON NO. 1611

Period Homes

5720 Flatiron Parkway, Boulder, CO 80301
www.period-homes.com

Editor **Nancy E. Berry**
Contributing Editor **Martha McDonald**
Editor Emeritus **Clem Labine**
Editorial Director **Patricia Poore**

Creative Director **Edie Mann**
Associate Art Director **Mark Sorenson**
Junior Designer **Kanoe Wentworth**

Group Production Director **Barbara Van Sickle**
Advertising Coordinator **Cossette Roberts**
Prepress Specialist **Idania Mentana**

Associate Publisher **Robin Habberley**
Advertising Sales Manager **Jennifer Baldwin**
Information Services Manager **Dorian Henao**



Publisher **Peter H. Miller, Hon. AIA**
Sales Director **Heather Glynn Gniazdowski**
Director of Digital Media **LJ Lindhurst**
Business Manager **Linda Cavanaugh**
Marketing Manager **Eads Johnson**
Web Developer **Matt Michnal**
Web Producer **Leo Maisouradze**
Production Editor **Emily O'Brien**

TRADITIONAL BUILDING CONFERENCE SERIES
Education Director **Judy L. Hayward**
Director of Operations **Carolyn Walsh**



Chairman **Efrem Zimbalist III**
President & CEO **Andrew W. Clurman**
Executive Vice President & CFO **Brian Sellstrom**
Executive Vice President of Operations **Patricia B. Fox**
Senior Vice President, Digital & Data **Jonathan Dorn**
Vice President, Finance **Craig Rucker**
Vice President, Controller **Joseph Cohen**
Vice President, Research **Kristy Kaus**
Vice President, IT **Nelson Saenz**

Toll-free 866-566-7840; Fax: 303-440-1618
Subscriptions & Subscriber Service: 800-548-0148
Period Homes, P.O. Box 3000, Denville, NJ 07834-9965

PERIOD HOMES (ISSN # 1531-2100) is published bi-monthly by the Home Group of Active Interest Media, 5720 Flatiron Parkway, Boulder, CO 80301; 800-826-3893

Subscription rate to professionals in architecture, interior design, construction and landscape design in the U.S. and possessions: \$24.95/yr. (6 issues). Not available outside the U.S. postal system.

Contents of PERIOD HOMES are fully protected by copyright and must not be reproduced in any manner whatsoever without written permission from the publisher.

Copyright 2016 by Active Interest Media,
5720 Flatiron Parkway, Boulder, CO 80301
Fax: 303-440-1618

LIST RENTAL: THE INFORMATION REFINERY 201-529-2600

LOGO LICENSING, REPRINTS AND PERMISSIONS
CONTACT BRETT PETILLO, WRIGHT'S MEDIA
1-877-652-5295 aim@wrightsmedia.com

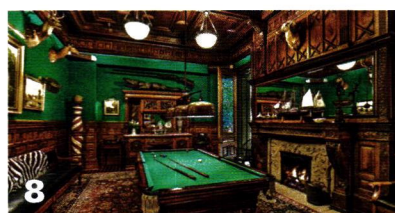


CIVITAS

In this Issue

VOLUME 17 ■ NUMBER 4 ■ JULY 2016

2016 PALLADIO AWARDS



8 Restoration / Renovation
VICTORIAN RESIDENCE,
PHILADELPHIA, PA

Kass & Associates

All Palladio stories by Kiley Jacques



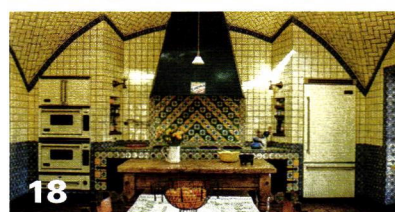
12 New Design, less than 5,000 square feet
UPPER WEST SIDE RESIDENCE,
NEW YORK, NY

Fairfax & Sammons Architects



16 New Design, more than 5,000 square feet
HOWELL HOUSE, PANAMA CITY, FL

Eric Watson Architect



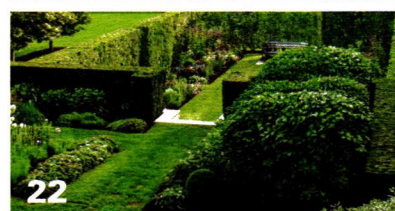
18 New Design, more than 5,000 square feet
FRENCH RANCH, HIDDEN VALLEY, CA

Michael Burch Architects



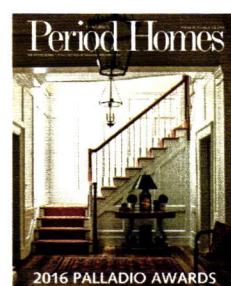
20 Residential Multi-Unit
EUGENE O'NEILL THEATER CENTER,
WATERFORD, CT

Centerbrook Architects and Planners



22 Exterior Spaces
A NEW CLASSIC, GREENWICH, CT

Doyle Herman Design Associates



ON THE COVER
BADGER HILL FARM,
MARSHALL, VA

Neumann
Lewis Buchanan
Architects

See story starting
on page 24.

28 Product Report
TRUE OR FAUX
Myriad choices exist when it comes to roofing
for your period home project.

By Gordon Bock

60 Last Look
HISTORIC TIVERTON ESTATE REBORN

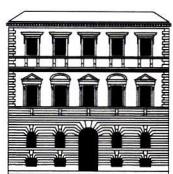
By Harrison Sutphin of Sutphin Architecture

6 ADVERTISER INDEX

BUYING GUIDES

Historical Products Showcase32
Composite, Wood & Metal Windows41
Doors & Entryways43
Door & Window Hardware44
Shutters & Shutter Hardware46
Screens & Storms49
Metal, Slate, Wood & Tile Roofing51

Specialty Glass51
Chimneys52
Weathervanes, Finials & Cresting52
Gutters & Leader Boxes53
Cupolas53
Skylights54
Snowguards54



TRADITIONAL BUILDING CONFERENCE SERIES

NEW HAVEN LAWN CLUB,
ADJACENT TO YALE UNIVERSITY



MATERIALS & METHODS

July 19-20 • Lawn Club, New Haven, CT • Online registration is now open!

The Traditional Building Conference Series delivers focused, relevant education for architects, contractors, craftspeople, designers, building owners and facilities managers in a time-efficient format at beautiful historic venues. In a two-day interactive symposium you will learn from best-in-class experts and practitioners about historic preservation; adaptive use, urban infill, classical design, sustainable design, building restoration/maintenance and

traditional craft. Meet the editors of *Period Homes* and *Traditional Building*. Network with your industry peers, clients and the technical representatives from restoration/renovation product suppliers.

The Traditional Building Conference Series is a registered provider of AIA continuing education credits. Credits for NARI, AIBD, and some NAHB certifications are available.

UPCOMING CONFERENCES

October – Pittsburgh, Pennsylvania

December – Washington, DC

Registration Inquiries:
Carolyn Walsh 781.779.1560
cwalsh@aimmedia.com

Education Inquiries:
Judy Hayward 802.674.6752
jhayward@aimmedia.com

Partnership Inquiries:
Eads Johnson 203.722.1489
eadsjohnson@aimmedia.com

Sponsorship Inquiries:
Robin Habberley 703.831.6588
rhabberley@aimmedia.com



www.traditionalbuildingshow.com

Durability, True Quality, & Simply Beautiful

Experience the difference!



Since 1982, Parrett has offered a high quality product that is produced using the highest grade materials along with meticulous craftsmanship. Whether we manufacture using our standard parts and profiles, or if we build to your specification, you can count on Parrett quality and durability.



Parrett

Windows & Doors

Quality Crafted Windows & Doors

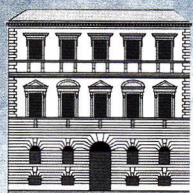
Phone: 800-541-9527

Fax: 1-877-238-2452

www.parrettwindows.com

info@parrettwindows.com

CLICK ON NO. 3003



TRADITIONAL BUILDING CONFERENCE SERIES

Thanks,

TO OUR SPONSORS

GOLD

CONNOR HOMES
CROWN POINT CABINETRY
HISTORICAL ARTS AND CASTINGS
MARVIN WINDOWS AND DOORS
PILKINGTON NORTH AMERICA

SILVER

ALLIED WINDOW, INC.
HERITAGE TILE
LUDOWICI ROOF TILE
UNICO, INC.

BRONZE

BALL & BALL
CRITTALL WINDOWS LTD
JOHN CANNING & COMPANY
J.S. BENSON
MARTIN'S CHAIR INC.
WIEMANN METALCRAFT

WINDOWS CONFERENCE

ABATRON | ADAMS ARCHITECTURAL MILLWORK COMPANY | INDOW WINDOWS
INNERGLASS WINDOW SYSTEMS | JS BENSON | MON-RAY, INC.
PELLA EFCO COMMERCIAL SOLUTIONS | PHOENIX WINDOW TECHNOLOGIES AND RESTORATION
TIMBERLANE | WINCO WINDOW COMPANY

Thanks to our sponsors who underwrite your education including AIA continuing education credits, as well as credits for NARI, AIBD, and some NAHB certifications. These suppliers are dedicated to serving the historic restoration, renovation and traditional building industry!

J.S. BENSON

Leaders in innovative fenestration for over 30 years.



Architectural Millwork Custom Windows and Doors

jsbenson.com

CLICK ON NO. 1614

The Advertiser Index

To order product literature from a company listed below, go to www.period-homes.com/rs and click on the appropriate reader service number.

Historical Products Showcase

1202 Architectural Accents	39
404-266-8700 www.architecturalaccents.com	
2220 Architectural Grille.....	39
800-387-6267 www.archgrille.com	
1580 Chadsworth Columns	34
800-486-2118 www.chadsworth.com	
477 Crown Point Cabinetry	35
800-999-4994 www.crown-point.com	
809 Deep Landing Workshop	36
877-778-4042 www.deeplandingworkshop.com	
1756 Driwood Moulding Company	37
888-245-9663 www.driwood.com	
2890 Felber Ornamental Plastering Corp.....	39
800-392-6896; 610-275-4713 www.felber.net	
191 Gavin Historical Bricks, Inc.	39
319-354-5251 www.historicalbricks.com	
4020 Haddonstone (USA), Ltd.	37
719-948-4554 www.haddonstone.com	
1739 Kuiken Brothers Company, Inc.....	36
201-705-5375 www.kuikenbrothers.com/classical	
1748 Lanternland	40
855-454-5200 www.lanternland.com	
3130 Old Carolina Brick Co.....	38
704-636-8850 www.handmadebrick.com	
1743 Pacific Register Company	37
805-487-7500 www.pacificregisterco.com	
301 Period Lighting Fixtures, Inc.	40
800-828-6990; 413-664-7141 www.periodlighting.com	
5810 Reggio Register Co., Inc., The	39
800-880-3090 www.reggioregister.com	
1759 Space-Pak	34
413-564-5530 www.spacepak.com	
1516 Worthington Millwork.....	40
800-872-1608 www.worthingtonmillwork.com	

Composite, Wood & Metal Windows

1004 Allegheny Restoration & Builders Inc.	42
304-381-4820 www.alleghenyrestoration.com	
Architectural Components, Inc.	41
413-367-9441 www.architecturalcomponentsinc.com	
363 Artistic Doors & Windows	CVR4, 41, 43
800-278-3667 www.artisticdoorsandwindows.com	
1614 Connor Homes.....	5
802-382-9082 www.connorbuilding.com	
373 Crittall Windows, Ltd.	42
011-44-1376530800 www.crittall-windows.com	
2063 Illingworth Millwork, LLC.....	42
315-232-3433 www.jimillingworthmillwork.com	

1608 Kolbe Windows & Doors	7
800-955-8177 www.kolbe-kolbe.com	
1611 Marvin Windows & Doors.....	CVR2
888-537-7828 www.marvin.com	
Maurer & Shepherd, Joiners.....	41
860-633-2383 www.msjoiners.com	
3003 Parrett Windows & Doors.....	3
800-541-9527 www.parrettwindows.com	

Doors & Entryways

363 Artistic Doors & Windows	CVR4, 43
800-278-3667 www.artisticdoorsandwindows.com	
3570 Historic Doors.....	43
610-756-6187 www.historicdoors.com	
1727 Vintage Doors.....	43
800-787-2001 www.vintagedoors.com	

Door & Window Hardware

8410 American Historic Hardware	46
607-547-1900 www.ahhardware.com	
1670 Architectural Resource Center.....	45
800-370-8808 www.aresource.com	
2260 E.R. Butler & Co.....	CVR3, 46
212-925-3565 www.erbutler.com	
2520 Gaby's Shoppe	44
800-299-4229 www.gabys.com	
339 House of Antique Hardware	44
888-223-2545 www.hoah.us	
6001 Phelps Company	45
603-336-6213 www.phelpscompany.com	
1744 SRS Hardware	45
401-954-9431 www.srshardware.com	

Shutter & Shutter Hardware

1690 Acorn Mfg.....	47
508-339-4500 www.acornmfg.com	
405 Brandywine Forge	47
610-948-5116 www.bvforge.com	
1605 John Wright Company	47
717-252-4442 www.jwright.com	
5005 Shuttercraft, Inc.....	47
203-245-2608 www.shuttercraft.com	
1056 Timberlane, Inc.	48
215-616-0600 www.timberlane.com	

Screens & Storms

690 Allied Window, Inc.	49
800-445-5411 www.alliedwindow.com	
52 Arch Angle Window & Door.....	50
330-723-2551 www.archangleohio.com	
2390 Cityproof Windows.....	50
718-786-1600 www.cityproof.com	
9600 Coppa Woodworking.....	49
310-548-4142 www.coppawoodworking.com	
1746 Indow.....	50
503-284-2260 www.indowwindows.com	
909 Innerglass Window Systems	50
800-743-6207 www.stormwindows.com	
1288 Mon-Ray Inc.....	33
800-544-3646 www.monray.com	

Chimneys

174 Benson Energy	52
801-273-1800 www.bensonenergy.com ; www.controlcover.com	
410 ChimneyPot.com.....	52
724-345-3601 www.chimneypot.com	

Metal, Slate, Wood & Tile Roofing

8300 NIKO Contracting Co., Inc.	51
412-687-1517 www.nikocontracting.com	
2840 Vande Hey Raleigh Architectural Roof Tile.....	51
800-236-8453; 920-766-0156 www.vrmtile.com	

Cupolas

1312 Copper-Inc.com	53
888-499-1962 www.copper-inc.com	
588 EJM Copper Inc.....	53
407-447-0074 www.ejmcopper.com	

Snowguards

1493 SnoBlox-SnoJax	55
800-766-5291 www.snoblox-snojax.com	

Call for more information.

ADVERTISING INQUIRIES

ASSOCIATE PUBLISHER

Robin Habberley

rhabberley@aimmedia.com
703-831-6588

ADVERTISING SALES MANAGER

Jennifer Baldwin

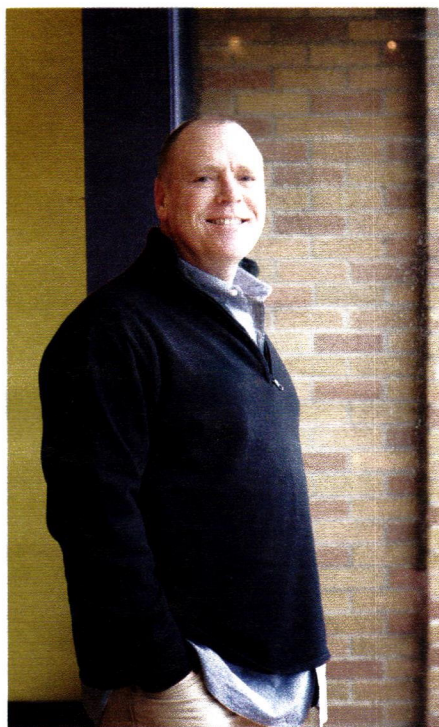
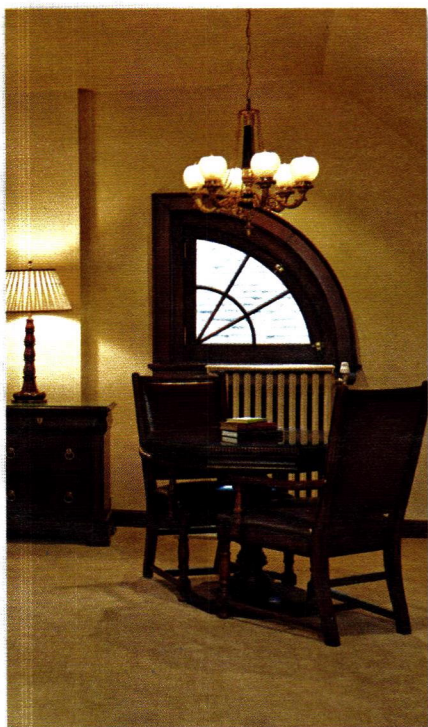
jenbaldwin1@msn.com
718-619-7645



OLD HOUSE JOURNAL	CABIN LIVING
ARTS & CRAFTS HOMES	LOG HOME LIVING
NEW OLD HOUSE	TIMBER HOME LIVING
EARLY HOMES	DREAM HOME SHOWCASE
DESIGN CENTER SOURCEBOOK	LOG & TIMBER HOME PLANNER
PERIOD HOMES	CUSTOM WOOD HOME STYLE GUIDE
TRADITIONAL BUILDING	MYWOODHOME.COM
OLDHOUSEONLINE.COM	

My Vision...

was to further this home's story by combining technology with intricate restoration.



From tailor-made shapes to custom exterior frame extensions, ease of operation to energy efficiency, Kolbe helped set this historic home on a path toward its next century. Custom Kolbe products help respect history while providing a commanding view of the future.

Jamie Henderson, AIA, Principal
Henderson Associates Architects, Inc. | Edwardsville, IL

We're for the visionaries® | Without compromising the original aesthetic and design of a historic home, Kolbe offers options that marry historical renovation with energy efficiency. Each window and door is built-to-order, with a multitude of options to customize for every aesthetic. **Kolbe-kolbe.com**

KOLBE
WINDOWS & DOORS
800.955.8177

Restoration/Renovation

VICTORIAN RESIDENCE, PHILADELPHIA, PA

KASS & ASSOCIATES

A comprehensive three-year renovation of the George C. Thomas House—a historic double-wide townhouse in the Rittenhouse Square neighborhood of Philadelphia—has resulted in a house that will long be preserved as a historic resource. “This project restores and updates a grand Victorian mansion in Philadelphia built in 1874 by the Hewitt Brothers and Frank Furness,” explains principal architect Spence Kass.

Adopting the existing cottage’s 1,900-square-foot floor plan for the new architectural program, which features an additional 4,700 square feet, proved to be the most challenging aspect of the project, as the overall mass was in jeopardy of appearing dark and bulky. The solution, in large part, was to strike a balance by making the new white-clapboard kitchen wing a near-twin of the existing cottage.

Additionally, the old cottage had very small spaces with ceiling heights of less than eight feet. The new program called for primary rooms to be more spacious with 11-foot ceilings and classical detailing.

It is interesting to note that the Doric order of the new entry portico establishes the proportional rules used throughout the exterior and interior detailing, though the architect remarks that the mutule blocks typically found in the cornice of a Doric portico are instead found inside the cornice of the wood paneled library—a detail that both “breaks the rules” of the order while respecting its requirements.

Location wise, the team respected the property’s woodland setting, with its oak and hickory trees and a western view of the Blue Ridge Mountains. By conserving open space and using reclaimed materials—such as heart pine from a recently

demolished nut and bolt manufacturing facility—they further the legacy of Badger Hill as an equestrian farm tied to its landscape. In fact, a newly renovated and expanded 16-stall horse stable, plus a new indoor training/exercise ring, outdoor arena, and equipment barn expand the farmstead to address the client’s contemporary needs.

The house proper now comprises 6,600 square feet of living space—the whole of which appears as if it has been there for more than 200 years. Occupying one quarter of the old cottage, the light-filled central staircase, crowned with a glass roof structure and ascending to both second floor levels, ties the old with the new. Furthermore, the architectural style of the Virginia Piedmont contributes to the new classic farmhouse’s southern character and charm.

— Kiley Jacques



KEY PRODUCTS, MATERIALS & SUPPLIERS

Audio / Visual: Artistic Video & Sound, Inc.

Kitchen Cabinets & Tile: Joanne Hudson Associates, LTD (Joanne Hudson Basics)

Marble Fabrication & Installation: Michael Addesso Marble and Granite World, Inc.

Exterior Windows & Doors: North American Window & Door, Inc., Kolbe & Kolbe

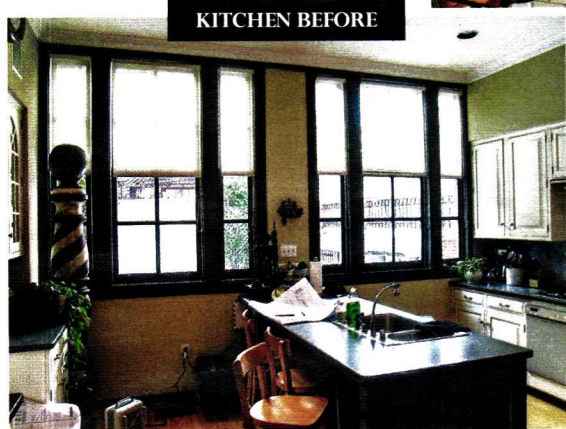
Lumber & Trim: Tague Lumber of Media, Inc.

Plumbing: Ferguson Enterprises



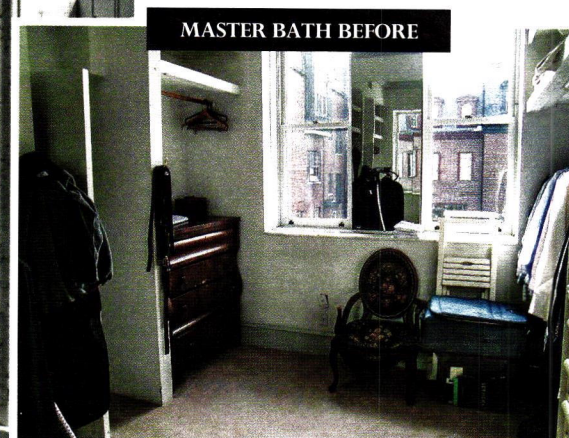
HALKIN MASON PHOTOGRAPHY





For more photos of this home,
visit period-homes.com.







CONSERVATORY BEFORE



New Design, less than 5,000 square feet
UPPER WEST SIDE RESIDENCE, NEW YORK, NY
 FAIRFAX & SAMMONS ARCHITECTS



KEY CRAFTSPEOPLE

Building Contractor
 Di Salvo Contracting Co Inc,
 Brooklyn, New York

Sub-Contractors
 Millwork Housewrights Inc.,
 York, Maine

Wood Finishing Historic Floors
 by Stephen Gamble Inc.,
 Greenwich, Connecticut

Interior Design Apr Interiors,
 New York, New York

When a family in the entertainment industry wanted to renovate a recently purchased apartment overlooking New York City's Central Park, they turned to Fairfax & Sammons Architects.

Housed inside a 1910 Arts and Crafts-style building by architect William Wilhelm Wilkerson, the Upper West Side Residence program called for combining three apartments on the eleventh floor to create one unit suitable for a six-member family. As the client wanted

comfortable spaces for everyday living that incorporated the building's architectural style, all three apartments required a comprehensive renovation. Although a few original details—because they are in keeping with the Arts and Crafts style—survived, including an original inglenook fireplace and clay tile floor in the living room, and original French doors and paneling in the octagonal dining room.

A warm, masculine office built of hand-scraped, stained, and distressed American black walnut makes a stately impression—one that suggests the room is original to

the building. In fact, careful attention was paid to ensure that all of the interiors fabricate a sense of history.

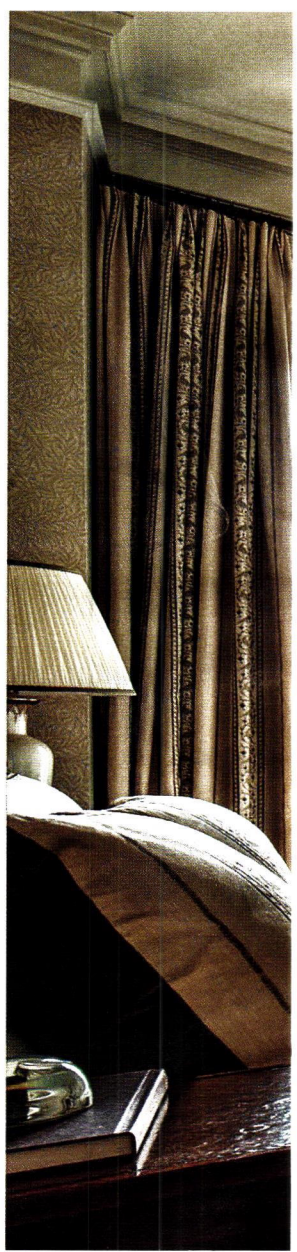
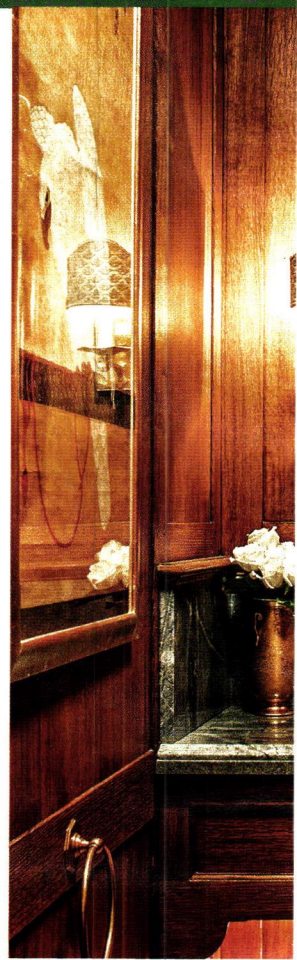
In less than 5,000 square feet, the contractor managed to comfortably fit: four bedrooms, three bathrooms, a powder room, kitchen, dining room, living room with terrace overlooking Central Park, family room, office, study, library, pantry, dry bar, dressing room, laundry rooms, and a master suite with closet and sitting room. All new exterior windows and doors and a new full HVAC system complete the masterful plan.

— Kiley Jacques



For more photos of this home, visit period-homes.com.







New Design, more than 5,000 square feet

HOWELL HOUSE, PANAMA CITY, FL

ERIC WATSON ARCHITECT

This new Mediterranean-style traditional house is large, comfortable, and characterized by a variety of interior and exterior entertaining areas that take full advantage of the water view. Situated on a 300-foot-deep by 100-foot-wide slice of waterfront on Saint Andrews Bay in Panama City, Florida, the house extends to the side setback boundaries to maximize the view.

A strong central axis extends from the bay to the street through the house's primary spaces. A sequential arrival—from driveway to forecourt to entry portico—bolsters the axial orientation. Inside, a linear entry gallery connects all main floor areas while framing the view into the great room, loggia, pool garden, and near-distant waterfront. The gallery culminates with the stair hall, which features a memorable circular limestone staircase with custom wrought iron handrail. "The design developed into an open classical plan with the primary areas arranged on an axis from the arrival forecourt/portico through the living room/loggia to the pool garden and the waterfront view beyond," says principal architect Eric Watson.

The interior of the two-story 5,800-square-foot masonry house comprises: a large combined living and dining area with fireplace; a study and an office; a kitchen and breakfast room; a master bedroom with sitting area and fireplace; his and her master bathrooms, closets, and dressing areas; two guest bedrooms with private bathrooms; an exercise room; a laundry area; an elevator; a master bedroom covered porch; a first-floor screened porch; and a three-car garage.

Principal interior features include: limestone flooring, plaster-finished interior walls, a circular staircase with custom-designed and fabricated wrought iron handrail, antique pine bookcases and moldings in the study, and an antique limestone fireplace surround in the great room. Additionally, classical moldings and details create a sensible backdrop for showcasing the client's collection of fine art and furnishings.

The 2,400 square feet of exterior space host a forecourt with ample room for guest parking, a swimming pool and spa, and areas for seating and dining. Special features take the form of an Italian barrel-tile roof, cast-stone window and door architraves, mahogany shutters, and a screened out-

door sitting room with dry brush-painted brick walls. Curvilinear plantings support circulation around the property while four geometrically stationed palm trees, flanked by slightly raised lawn terraces, frame the waterfront view and anchor the pool at the center of the garden.

Of special note is the Tuscan-inspired entry portico, inspired by Indio Jones's design for Saint Paul's Church at Convent Garden. Its presence is the house's primary architectural expression, establishing the entry façade. Featuring cast-stone exterior door and window architraves as well as timber eaves, the portico is in perfect harmony with the Palladio-inspired villa as a whole. "When the client of this new house expressed an interest in a Mediterranean style house with columns," explains Watson, "I immediately envisioned an axial, Palladian plan anchored by an entry portico in the Tuscan Order.... Through the rigor of the classically inspired planning and architectural expression, this new house demonstrates how the architectural principals of Andrea Palladio can be relevant to the design of a traditional new house that meets the requirements of modern day living."

— Kiley Jacques



KEY PRODUCTS, MATERIALS & SUPPLIERS

Stucco: Smooth troweled, three layer concrete

Exterior wood trim & Soffits: Clear cypress

Exterior columns, Window and door architraves: Cast Stone by Tabby Stone

Interior columns: Chadsworth Columns

Exterior light fixtures: Murray's Ironworks

Interior light fixtures: Visual Comfort, Julie Niell Designs, McLean Lighting Works

Windows: Loewen, insulated with impact glazing

Exterior French doors: Bronze and Mahogany by Fenestra — America

Front door: Mahogany, custom designed

Exterior Shutters: Spanish Cedar, custom designed

Paints: Benjamin Moore

Exterior stains: Sikkens

Gutters and downspouts: Copper

Driveway and Forecourt paving: Old Chicago Brick

Exterior terrace paving: Shell stone

Roof tile: "Centenaria Ground" by Tejas Borjia S.A

Entrance gallery and stairway tile: Italian Limestone

Interior wood flooring: Ole Savannah Floors.

Kitchen and bathroom cabinetry: Morgan Creek Cabinets

Study cabinetry and bookcases: Antique Heart Pine

Countertops: Marble, Quartz and granite

Plumbing fixtures and fittings: Rohl/Cifial

Door Hardware: Baldwin

Exterior shutter hardware: Brandywine Forge

Interior wall finish: Painted plaster

For more photos of this home, visit period-homes.com.





New Design, more than 5,000 square feet

FRENCH RANCH, HIDDEN VALLEY, CA

MICHAEL BURCH ARCHITECTS



KEY PRODUCTS, MATERIALS & SUPPLIERS

Range & Charbroiler: Viking
Refrigerators: Traulsen & Viking
Microwave: Gaggenau
Range Hood: Custom
Tile: California PoEery
Lights: Steven Handelman Studios
Registers: Pacific Register

Nestled in a deep valley on a 200-acre Spanish rancho in Hidden Valley, CA, just 45 miles west of downtown Los Angeles, this new 15,000-square-foot residence is an authentic Spanish Colonial Revival hacienda. Purchased from the estate of Colonel French—a Rough Rider with Theodore Roosevelt—the working cattle ranch has come to full fruition despite a significant initial hurdle. Shortly after its purchase, the property experienced a fire that destroyed the existing house. In an effort to preserve as much of the original ranch as possible, the client chose to rebuild on the existing footprint.

The program put forth by Michael Burch Architects, however, called for a residence nearly five times the size of that footprint; the challenge, then, was to sensibly accommodate a new structure in terms of its mass, scale, and authenticity. It also needed to be charming. And sustainable.

The architects looked at certain elements of the Spanish Colonial Revival style to inform a sustainability-focused design strategy. South-facing orientation, broad overhangs, deep porches, recessed windows, and clay tile floors result in passive-solar energy savings, while clay tile roofs and stucco walls provide fire resistance in the wild fire-

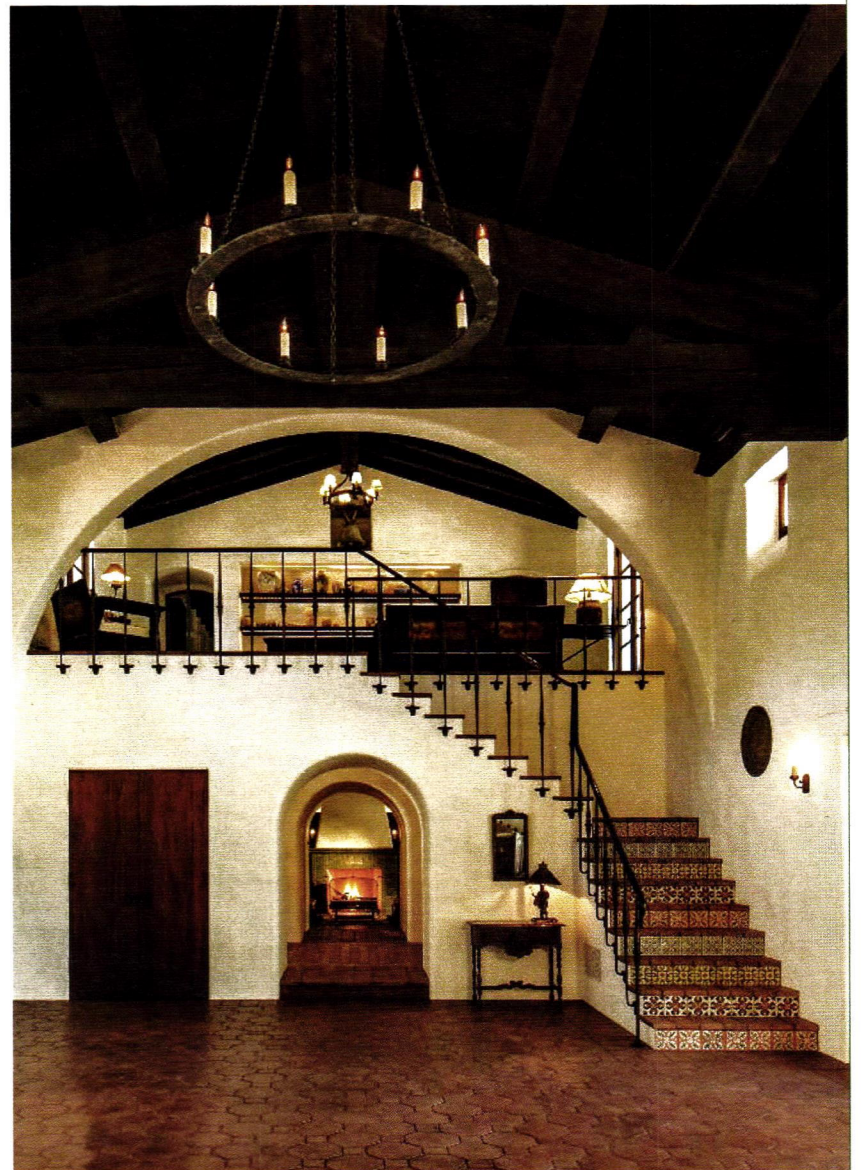
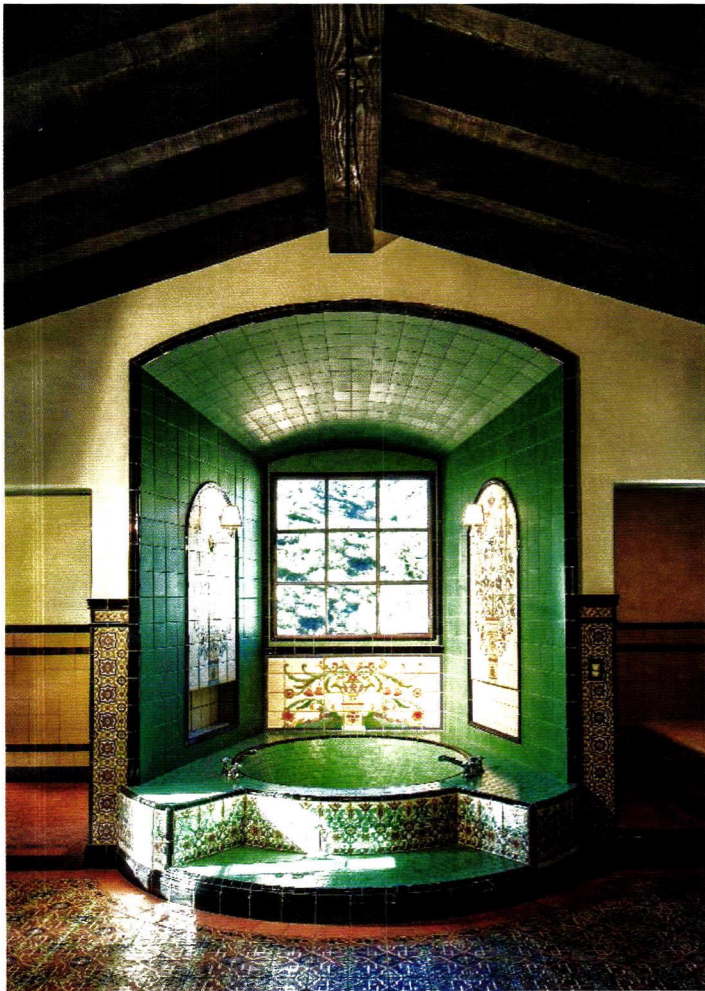
prone area. Strategies also included carefully considered sequencing of spaces and the optimization of both near and distant views.

This project displays an exceptional level of detail. Particularly noteworthy are the massive California Pottery-tiled kitchen with groin-vaulted ceiling, the tiled alcove of the master bath, and the covered porch off the living room featuring a fireplace and a barbeque. Additionally, the client's collection of Monterey and early California antiques, art, and artifacts are thoughtfully woven into the overall design to make for a palatial ranch setting.

—Kiley Jacques



For more photos of this home, visit period-homes.com.



Residential Multi-Unit

EUGENE O'NEILL THEATER CENTER, WATERFORD, CT

CENTERBROOK ARCHITECTS AND PLANNERS



ADDITIONAL KEY FIRMS INVOLVED IN THE PROJECT

MEP Engineer Innovative
Engineering Services, LLC,
East Haven, Connecticut

Connecticut Civil Engineer The LRC
Group, Cromwell, Connecticut

Connecticut Structural Engineer
Gibble Norden Champion Brown,
Old Saybrook, Connecticut

Connecticut General Contractor
Montagno Construction, Inc.,
Waterbury, Connecticut

Connecticut Landscape Architect
Towers Golde, New Haven,
Connecticut

When faced with the challenge of adding residential housing to accommodate 65 students of the Eugene O'Neill Theater Center, Centerbrook Architects and Planners got creative, befitting the client. Rather than designing a dormitory-style structure, they opted for the construction of eight new, closely spaced, Victorian cottages, befitting the locale—rural Connecticut.

In fact, its rural character is the center's most treasured aspect. The campus consists of Victorian, Federal, and rustic farm buildings scattered around pastures overlooking Long Island Sound. The goal, therefore, was to enhance that character and honor the theater's tight-knit community.

For inspiration, they turned to the tradition of Methodist Camps, which were built along the East Coast and through-

out the Midwest over the last half of the 19th century—a design choice they feel solidifies the campus's historical framework. "Their placement, scale, inviting porches, and intricate details nurture a sense of belonging and strengthen the O'Neill's richness as a special American place devoted to the performing arts," says designer Chad Floyd. In that tradition, tiny Victorian camp structures—initially tents, later cottages—were laid out around a large central pavilion, where daily prayer, community gatherings, and lectures were held. Ultimately, those camps served as venues for cultural affairs, many of which focused on the performing arts.

Featuring intimate porches, the cottages encourage residents to socialize, which is in keeping with the idea that small residential groupings nurture a sense of belonging; and details like intricate brackets and finials recall a simpler time.

In addition to residential space, which was to include laundry facilities, they were

commissioned to build a new rehearsal building that would house a dance studio and a music composition classroom. (The eight new cottages now encircle the new rehearsal space.) Furthermore, they were tasked with renovating a performance barn, as well as relocating and renovating a small box office building, in addition to general site improvements on the campus.

The firm's design for the cottages does, indeed, foster more closely knit residential communities, while that for the performance center enables flexibility for differing class sizes. Both designs work together to create an architectural aesthetic that supports the campus's established character. The overall result is a celebration of traditional Victorian design principles.

In essence, Centerbrook's decision to follow the Methodist Camps' Victorian architectural precedent has strengthened the O'Neill Theater Center as a place devoted to the culture of performing arts.

— Kiley Jacques

For more photos of this project, visit period-homes.com.





The black and white images at left are historical antecedents of the Eugene O'Neill Theater Center in Waterford, CT. Far left is the Methodist Campground in St. George, SC, 1848. Near left is Methodist Camp Cottages in Oak Bluffs, Martha's Vineyard, MA.

Exterior Spaces

A NEW CLASSIC, GREENWICH, CT

DOYLE HERMAN DESIGN ASSOCIATES

A “new classic,” this Colonial Revival home on a five acres in backcountry Greenwich, Connecticut, called for an entirely new landscape. Elaborate and formal, the architecture—inspired by the country houses of David Adler and Delano and Aldrich—had Doyle Herman Design Associates thinking in similar terms with respect to exterior “rooms” and plantings. Designed to complement the architecture, the outdoor spaces were arranged according to traditional design principles with an emphasis on strong axes.

To start, the whole site underwent a major topographical change, in part, to address the fact that the house was sited without a formal approach or parking courtyard. Also, they needed to incorporate an extensive drainage system. In general, elevation changes were maximized to set up destinations and private garden spaces.

A lengthy driveway now leads to a formal courtyard, then continues around the house, flanked by sheared *Taxus* hedges.

The drive itself is on axis with rows of trees in a newly installed 16-tree apple orchard. Two mature pin oaks and boxwood-hemmed parterres of cubed linden trees characterize the courtyard approach, focusing the viewer’s attention, once again, on the architecture of the house. Meanwhile, mounded evergreen plantings and climbing roses soften the façade of the stately manor, while cast-limestone urns centered at each ground-floor window add a certain elegance. “A spectacular Longshadow urn was placed outside each window as a repetitive architectural feature that could be planted differently throughout the seasons,” explains principal designer James Doyle. In fact, lead planters are placed in multiple locations to accommodate seasonal colors.

That architectural sensibility finds full expression throughout the landscape, both in terms of layout and plant selection. Rows of unclipped linden trees and gravel paths with stone inlays; light-toned, horizontally laid cut-granite masonry consistent with the stone on the house; and a long view with a backdrop of structured

trees that terminates with a monumental urn are all elements that accommodate the architecture. Additionally, a pool house, furnished for outdoor dining serves as a symmetrical temple-like structure with Doric columns.

Notable aspects of the garden design plan include a procession of gardens—starting at the front courtyard, where two hawthorn trees flank an entrance to the *Cornus* (dogwood) garden—leading to double herbaceous borders, where visitors find a private sanctuary-like space; a large limestone terrace with cascading steps down to a wide play lawn; and a mid-level terrace lined with colorfully planted borders and “conversation benches.” In short, the house now connects to all parts of the property via both visual and physical experiences.

“Our clients and their family members thoroughly enjoy this property from a practical and aesthetic viewpoint,” concludes Doyle. “It is satisfying that we can expose [them] to a sophisticated landscape design and win such a prestigious award as the Palladio.”

—Kiley Jacques



KEY PRODUCTS, MATERIALS & SUPPLIERS

Mchutchison Horticultural
Distributors, Wayne, New Jersey

Wickham Nursery,
Long Island, New York

Young’s Nursery, Wilton,
Connecticut



For more photos of this home, visit period-homes.com.



Adaptive Reuse/Addition

BADGER HILL FARM, MARSHALL, VA

NEUMANN LEWIS BUCHANAN ARCHITECTS

Neumann Lewis Buchanan Architects' 2016 Palladio Award-winning project addressed an existing cottage on the edge of Badger Hill Farm, a 140-acre horse farm near Upperville, Virginia. In an effort to avoid demolishing the perfectly sound structure, they worked to wed it with a new classic Virginia farmhouse. The resulting design makes the pre-existing cottage appear like a later addition to the newly built two-story brick main block, which fronts the old cottage to the south.

Adopting the existing cottage's 1,900-square-foot floor plan for the new architectural program, which features an additional 4,700 square feet, proved to be the most challenging aspect of the project, as the overall mass was in jeopardy of appearing dark and bulky. The solution, in large part, was to strike a balance by

making the new white-clapboard kitchen wing a near-twin of the existing cottage. Additionally, the old cottage had very small spaces with ceiling heights of less than eight feet. The new program called for primary rooms to be more spacious with 11-foot ceilings and classical detailing.

It is interesting to note that the Doric order of the new entry portico establishes the proportional rules used throughout the exterior and interior detailing, though the architect remarks that the mutule blocks typically found in the cornice of a Doric portico are instead found inside the cornice of the wood paneled library—a detail that both “breaks the rules” of the order while respecting its requirements.

Location wise, the team respected the property's woodland setting, with its oak and hickory trees and a western view of the Blue Ridge Mountains. By conserving open space and using reclaimed materials—such

as heart pine from a recently demolished nut and bolt manufacturing facility—they further the legacy of Badger Hill as an equestrian farm tied to its landscape. In fact, a newly renovated and expanded 16-stall horse stable, plus a new indoor training/exercise ring, outdoor arena, and equipment barn expand the farmstead to address the client's contemporary needs.

The house proper now comprises 6,600 square feet of living space—the whole of which appears as if it has been there for more than 200 years. Occupying one quarter of the old cottage, the light-filled central staircase, crowned with a glass roof structure and ascending to both second floor levels, ties the old with the new. Furthermore, the architectural style of the Virginia Piedmont contributes to the new classic farmhouse's southern character and charm.

—Kiley Jacques



KEY PRODUCTS, MATERIALS & SUPPLIERS

Foundation Stone Local fieldstone

Brick Old Carolina Brick Company, mix of 3 brick colors

Roof Copper

Siding & Trim Custom profiles, painted clear Western red cedar siding and painted clear Honduran mahogany trim

Columns Melton Classics, Western red cedar

Windows Marvin double hung weight and chain Signature Series wood windows in the main block. Marvin double hung and casement Ultimate Series wood windows in clapboard addition, existing cottage replacement windows and garage. Honduran mahogany

Exterior and Interior Doors, Transoms and Sidelight Heartwood Windows and Doors, Honduran mahogany exterior

Shutters Timberlane Woodcrafters, Western red cedar

Floors Baba Antique Wooden Floors, reclaimed oak from North Carolina tobacco barns

Interior Wood Trim and Library Paneling and Mantelpiece Hardwood Interiors INC., Oakland, Maryland

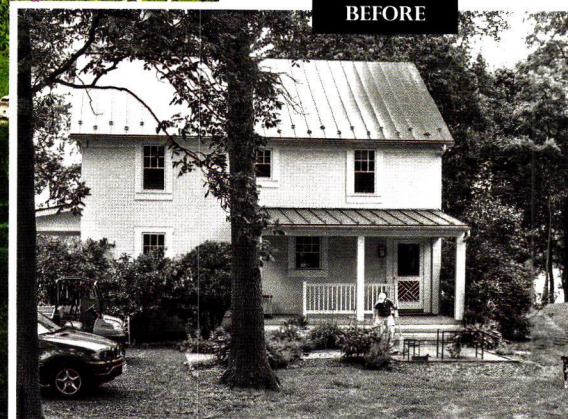
Kitchen Cabinets Jennifer Gilmore Kitchens

Door Hardware Baldwin, non-lacquered brass



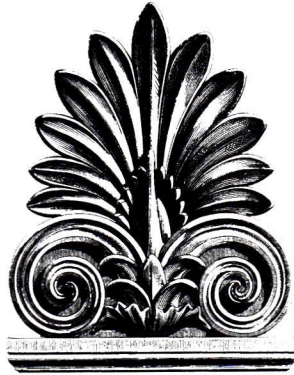
For more photos of this home, visit period-homes.com.

BEFORE

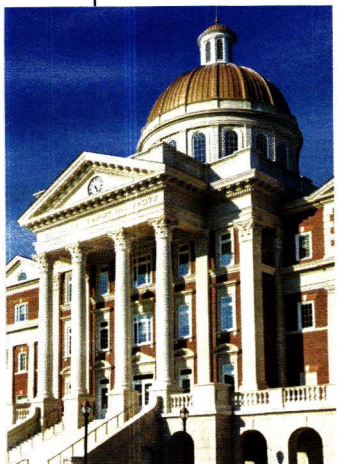








2017 PALLADIO AWARDS CALL FOR ENTRIES



The Palladio Awards program is produced by *Clem Labine's Traditional Building* and *Clem Labine's Period Homes*, and presented by The Traditional Building Conference, and is named in honor of Andrea Palladio, the Renaissance architect who created modern architecture for his time while drawing on past models for inspiration.



EXCELLENCE IN TRADITIONAL DESIGN

Honoring outstanding achievement in traditional design, The Palladio Awards program recognizes both individual designers and design teams whose work enhances the beauty and humane qualities of the built environment, through creative interpretation or adaptation of design principles, developed through 2,500 years of the Western architectural tradition.

The Palladio Awards are the first and only national awards program for residential and commercial/institutional projects which demonstrate excellence in traditional design.

AWARDS WILL BE CONSIDERED IN THE FOLLOWING CATEGORIES

COMMERCIAL, INSTITUTIONAL & PUBLIC ARCHITECTURE:

- Restoration & Renovation
- Adaptive Reuse and/or Sympathetic Additions
- New Design & Construction – less than 30,000 sq.ft.
- New Design & Construction – more than 30,000 sq.ft.
- Public Spaces: Parks, Plazas, Streetscapes, Gardens

RESIDENTIAL ARCHITECTURE:

- Restoration & Renovation
- Adaptive Reuse and/or Sympathetic Additions
- New Design & Construction – less than 5,000 sq.ft.
- New Design & Construction – more than 5,000 sq.ft.
- Exterior Spaces: Gardens & Landscapes
- Residential Multi-Unit

For more information, or to view previous winners, go to www.palladioawards.com



True or Faux

Myriad choices exist when it comes to roofing for your period home project.

BY GORDON BOCK

Many people assume that all roofing is immutable—products that are off-the-rack and what-you-see-is-what-you-get—but folks who deal with period houses know better. Not only are there companies that will customize standard offerings to the needs and tastes of their customers, or recreate roofing patterns no longer in production, but also even create new products that cross over in appearance from one material type to another.

Should there be any doubt, the proliferation of shapes, colors, and materials that made roofing so interesting in the first half of the 20th century, but waned by the 1970s, is on the rise again, and propelled

by consumer interest. “We’re seeing a lot of growth in high-end custom homes,” says Sherrye McCabe at Ludowici Roof Tiles in New Lexington, Ohio, “but since these houses are trending not as large as in the past, clients are choosing higher-quality finishes, which really plays well for us.” She notes that while clay tile is among the more expensive roofing materials, it brings returns. “With that price tag comes quality, durability, and customization that allows a homeowner to really make this roof their own.”

Leslie Franklin at GAF Materials Corporation in Parsippany, New Jersey, reports that asphaltic shingles are also in a big upswing. “The market for creative roofing shingle types has never been better,” she says. “Homeowners are more aware of the different

types of shingles and how they can truly impact the overall aesthetic of the home.” She adds that roofs can represent up to 40 percent of a home’s curb appeal. “Homeowners certainly want to ensure that they are installing roofing products that will protect the contents of their home, but they also want to use the exterior of the home as a way of expressing themselves and showing a bit more of their personality.”

As for concrete tile, Michael Lukis of Vande Hey Raleigh in Little Chute, Wisconsin, sees a similar interest. “Our big goal is to give each customer exactly what they want in color and create one-of-a-kind roofs for people that really want to do something unique and different.” He explains that their point of pride is not only quality, but all the colors, color com-

ABOVE & FAR RIGHT: NICHOLAS ROTONDI PHOTOGRAPHY;
IMMEDIATE RIGHT: WOODRUFF-BROWN PHOTOGRAPHY

bbinations, and sequences of color they can make—even different finishes on the surface of the tile. “Our plant manager tells me that, in the last 30 years, we’ve made over 4,000 different color combinations.”

CUSTOM CLADDING

In fact, color and customizing typically go hand-in-hand. For instance, Franklin says, “Several options exist to take the look of a GAF Designer Roof and customize it even further,” noting that this is especially the case with the variety of shingle styles available within the company’s Value Designer Shingle Collection. “A perfect example are Slateline Shingles, which have such a clean, slate-look profile. The line lends itself to customization through the combination of different shingle colors to create interesting designs on the roof.” She adds, “All of our shingle colors are designed with input from color and design experts who are well versed in current and forward-looking trends.”

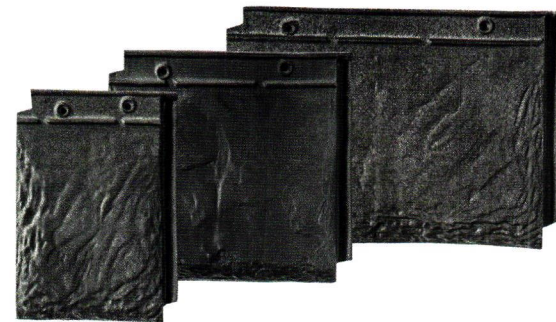
Clay tile, where pigments are fired-on in the glazing process, is another roof material readily customized with color. “Most of our products are custom and made on an order-by-order basis,” says McCabe of Ludowici, which offers over 40 designer colors as well as their custom color development process. “Because we have the ability to customize not only the roof tile profile, but also the textures and colors, we’re also able to produce really good matches of existing tile or for the aesthetic of a house or building.”

Lukis says Vande Hey Raleigh uses different surface color sprays to produce in concrete tiles what are called color sequences. “We don’t just have three distinct colors, one after another, we will actually blend the colors softly and subtly throughout the tiles.” As he explains, some tiles will have distinct colors, but here and there the viewer will also see a flow of colors within one tile. “It creates a softer effect on the roof,” he says, “not this blotchy checkerboard-like appearance.” Being a smaller producer, he says they can be more custom-oriented. “We work closely with each customer and building owner to create the kind of look they want.”

For roofing tiles, customizing can also mean possibilities for recreating long-gone patterns. Lukis



Designed by Charles Hilton Architects this project has a natural slate roof. In between the hand-hewn timbering, are Ludowici tile.



THIS PAGE, COURTESY OF LUDOWICI; OPPOSITE, COURTESY OF GAF



LEFT AND ABOVE: Ludowici offer LudoState and Lexington Slate a durable, interlocking Terra Cotta slate. **Below,** A homeowner can change the tone of the house design by the roofing they select.

Shown right is GAF's Camelot II.

recalls a homeowner who only needed 15 pieces of discontinued concrete rake edge tile for a roof repair. "The manufacturer stopped making the tiles 40 years ago, and he couldn't find them anywhere as salvage," he says, "so we made those pieces for him." Moreover, not every customer is an individual. "Insurance companies like Allstate and State Farm have come to us for hail-damaged roofs where there are maybe only 50 broken tile. Rather than replace the whole roof for, say, \$70,000, it only costs a few thousand dollars for us to make 50 exactly matching pieces."

He adds that matching color on a seasoned concrete roof can be tricky, and there's a lot of labor and time involved in making molds (which can only turn out one tile a day), but they will tackle most kinds of discontinued concrete tiles from defunct companies.

The custom reproduction process starts with supplying Lukis' company with a full existing tile from which they can make a mold. "Just as with clay tile, salvage is going to be the best match, and usually the least costly," he says. "So as a last resort, we can make most any kind of concrete piece that people might need."

At Ludowici, McCabe says they too will help replicate out-of-production clay tiles. "One of the things we're most proud of is our ability to take pieces in, do some hand-carving, and make them match historic tile for sympathetic additions or entire roof replacements." They have reproduced patterns for out-of-business manufacturers, but naturally, they have the most success with their own product line. "Because of our history beginning in 1888, we still have many molds and designs that we were doing decades ago."

She says they usually request the client first send them six to ten tiles in whatever is the color range. "We'll evaluate the tiles to see if there is a close match in an already-existing Ludowici profile and, if not, what it would cost to replicate in shape, color, and texture." If there are specific accessories, such as ridge tiles or terminals, the process varies quite a bit, "but it all starts with sending us samples to evaluate."

Suppose the client only needs 10 percent new tile for a re-roof — or even less for a small storm damage repair? "We have a program called Renovation Quick-Ship where we stock a select number of four of our major historic tile profiles and in six of the historic colors. So, if you have an order of less than 100 pieces in one of the six colors or four shapes, we can ship that out to you within two weeks."



MERCURIAL MATERIALS

Turns out, when you're so proficient at customizing your own, current roofing line that you can replicate products from the past—even from other producers—it's only a short step to emulating roofing of a completely different ilk. Man-made tiles and shingles that capture the cachet of slate are a growing example.

With this in mind, McCabe says the slate look in clay has been increasingly popular, and for several reasons. "Of our two slate products, Ludoslate has been around the longest. It's our lightweight slate—less than 6 lbs. per sq. ft. or about half the weight of natural slate (8 to 10 lbs. per sq. ft.)—so it can go on many more kinds of structures where weight could be an issue." She adds that as an interlocking tile, it requires fewer pieces than a traditional slate roof, which saves on installation time as well as weight. They have some colors they recommend that mimic slate very well, but people can order specific colors and even some textures. "The product comes in a standard size, with a subtle, lightly quarried slate look, as well as the Premier Package, so you can do a

random width appearance, or a staggered look where the courses are uneven."

The company's latest clay-slate product, Lexington Slate, takes a different approach. "We wanted to create an authentic-looking version of slate and cedar shake, but with the longevity of Grade One clay tile, and have it be affordable and off-the-shelf." To do this, she says they're running this collection between custom jobs, keeping stock in the yard and the price low. Though more standardized than its sister slatelike, the Lexington Slate has a thicker butt and a wider profile.

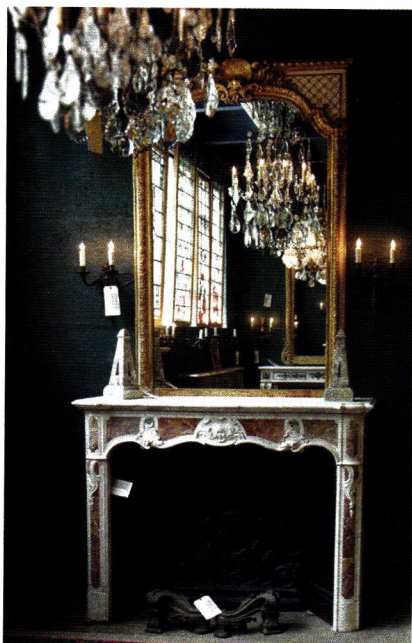
Asphaltic shingles too adapt deftly to slate ambience. In addition to the long-running popularity of Slateline Shingles, GAF is following suit with more creative products. As Franklin explains, their Value Designer Shingle Collection includes, "Camelot II Shingles, which provide a more traditional slate look; Sienna Shingles, which offer a beautiful slate-look shingle that provides a look of old-world elegance with a diamond design; and Woodland Shingles, which provide a beautiful, rustic European staggered-slate look." There's even a nod to clay with Monaco

Shingles, "the first asphaltic shingle that provides the look of tile without the associated hassles."

Turns out, concrete is equally effective as an alternative to natural slate. "We do a couple different colors with the Modern Slate product, such as a New England Slate sequence and an Early American Slate sequence," says Lukis. "The way the blend works, you almost can't tell the difference from real slate at even a short distance." Since Vande Hey's concrete tiles have an unfinished, rugged bottom edge, they are more appealing than many other concrete tiles that are machine-cut, and the smaller size—10-inch by 15-inch—looks more like natural slate. He adds that concrete slate tiles have the advantage of being thicker than natural slate. "Many people want thick slate because it creates nice shadow lines, but thick slate costs more and is drastically heavier. With a concrete tile, you get the shadow lines automatically without increasing the weight and at lower cost."

Gordon Bock, co-author of The Vintage House (www.vintagehousebook.com) lists his fall 2016 courses, seminars, and keynote addresses at www.gordonbock.com.

HISTORICAL PRODUCTS SHOWCASE



This French 19th century marble mantel and gilded mirror are part of the extensive collection of European antiques at **Architectural Accents**.

Architectural Accents
404-266-8700; Fax: 404-266-0074
www.architecturalaccents.com
Atlanta, GA 30305

National supplier of architectural antiques: mantels, doors, hardware, tile, columns, furnishings, mirrors, statuary, fountains, iron railings, gates, chandeliers, sconces & exterior lighting; antique heart pine flooring.

Click on No. 1202



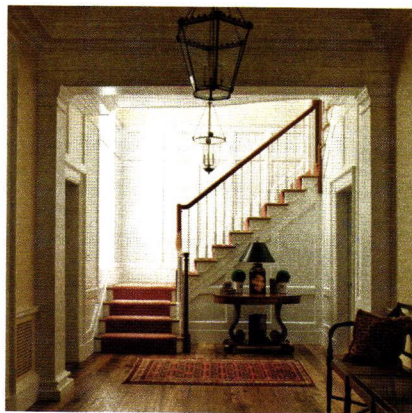
Architecture Grille offers a selection of grilles designed to enhance different environments.

Architectural Grille
800-387-6267; Fax: 718-832-1390
www.archgrille.com
Brooklyn, NY 11215

Supplier of grilles: custom perforated & linear bar; aluminum, brass, bronze, stainless steel & steel; variety of finishes; stock sizes; water-jet & laser cutting.

Click on No. 2220

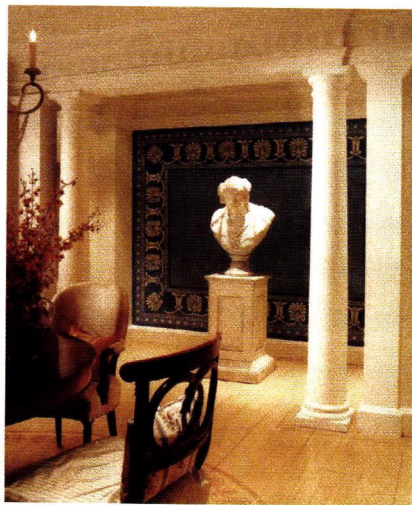
To order free product literature from a company listed in this Buying Guide, go to period-homes.com/rs and click on the reader service number that appears at the end of its caption.



BABA Antique Wooden Flooring Company provided the flooring for the Palladio Award winning project Badger Hill Farm.

BABA Antique Wooden Flooring Co.
800-542-4812; Fax: 919-545-9214
www.baba.com
Pittsboro, NC 27312 USA

The BABA Mill, located on a farm in Pittsboro, NC, provides the highest quality antique wooden flooring throughout the country. Best known for our original surface Fumed Antique Oak, Fumed Antique Chestnut, and Wide Board Antique Heart Pine. We provide matching stair treads, risers, casework, and proprietary, as well as custom finishes. Installation and/or on site finishing can be handled by us, or we will work closely with your own craftspeople. Samples are available upon request.



Chadsworth's Plain PolyStone columns with Roman Doric capitals and attic bases are used with the company's authentic replication plain Roman Doric pilasters to add architectural interest to this hallway.

Chadsworth Columns
800-486-2118; Fax: 910-763-3191
www.chadsworth.com
Wilmington, NC 28402

Manufacturer of authentically correct architectural columns: complete line of columns, piers, pilasters & posts; interior & exterior; variety of sizes, styles & materials; 4 different grade levels of wood columns; interior molded ornament; millwork; shutters.

Click on No. 1580 for PolyStone; 180 for wood

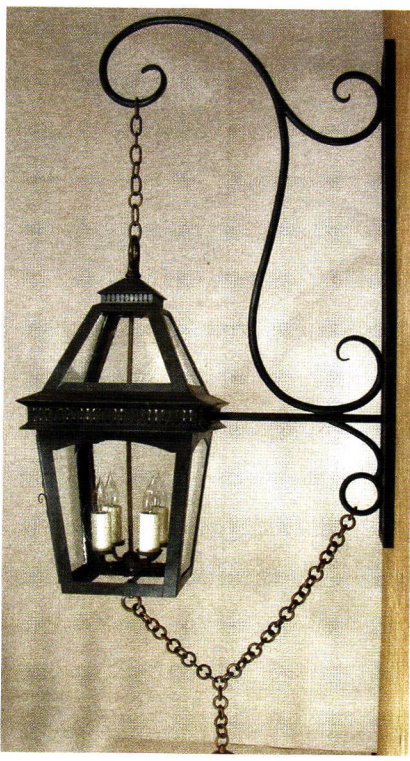


This kitchen features Shaker-style cabinetry hand-crafted by **Crown Point Cabinetry**.

Crown Point Cabinetry
800-999-4994; Fax: 603-370-1218
www.crown-point.com
Claremont, NH 03743

Custom fabricator of handcrafted, period-style cabinetry for kitchens, baths & other rooms: Arts & Crafts, Shaker, Victorian, Early American & contemporary styles; available nationwide.

Click on No. 477



The four-light model L-1265B-LB50 from **Deep Landing Workshop** is 47-in. tall from the bottom of the lantern to the top of the scroll; it projects 27 1/2 in. from the wall.

Deep Landing Workshop
877-778-4042; Fax: 410-778-4070
www.deeplandingworkshop.com
Chestertown, MD 21620

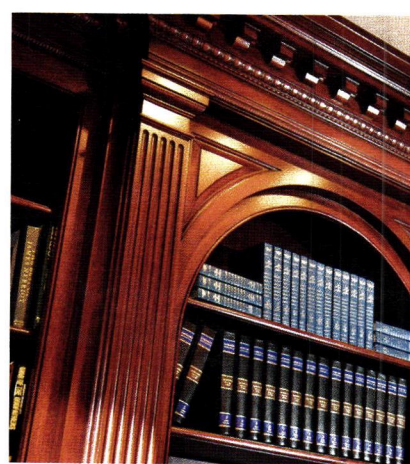
Designer & manufacturer of interior & exterior lighting fixtures: stylized reproductions rooted in the Colonial style.

Click on No. 809

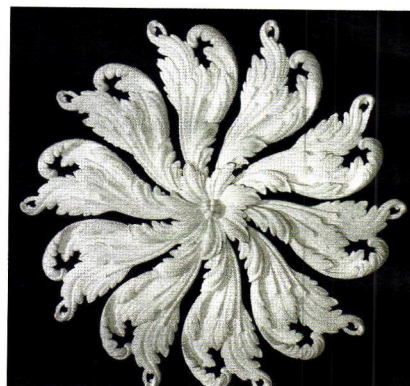
Drivewood Moulding Company
888-245-9663; Fax: 843-669-4874
www.drivewood.com
Florence, SC 29503

Stock and custom room interiors for residential and commercial projects. Embossed moldings, raised-panel doors, mantels, bookcases, exterior and interior door surrounds, pre-fabricated raised-panel wall sections.

Click on No. 1756



Cabinet and Panel work are among the many specialties of **Drivewood**.



Felber's new stock ceiling medallion, model CMO # 32, is also available an oval, CMO # 32A.

Felber Ornamental Plastering Corp.
800-392-6896; 610-275-4713; Fax: 610-275-6636
www.felber.net
Parkesburg, PA 19365

Creators and manufacturers of interior and exterior molded ornament: capitals, cornices, friezes, niches, keystones, rosettes, coffers, domes & medallions; custom mantels; plaster, gypsum & GRG; GFRC, signage, plaques, sculptors, model makers & casters on staff; stock & custom.

Click on No. 2890



Antique European blend cobblestones from **Gavin** were used for this driveway in Charlottesville, VA.

Gavin Historical Bricks, Inc.
319-354-5251; Fax: 319-688-3086
www.historicalbricks.com
Iowa City, IA 52245

Supplier of authentic antique brick pavers, granite cobblestones, clinker & common brick: custom matching; large quantities; special shapes; hand-molded & face brick; nationwide shipping.

Click on No. 191

HIGH-PERFORMANCE SECONDARY GLAZING WINDOWS

*...THE PERFECT SOLUTION FOR PRESERVING THE
HISTORICAL APPEARANCE OF THE ORIGINAL WINDOWS*



- *RETAINS CUSTOM SHAPES & SIZES*
- *FOR EXTERIOR OR INTERIOR INSTALLATIONS*
- *MATCHES CUSTOM COLORS*



- *CONSERVES ENERGY & REDUCES MAINTENANCE*
- *ABATES ANNOYING OUTSIDE NOISE*
- *PROVIDES YEAR-ROUND COMFORT & SECURITY*



*THE BETTER VALUE...
OVER A LONGER PERIOD
OF TIME.*

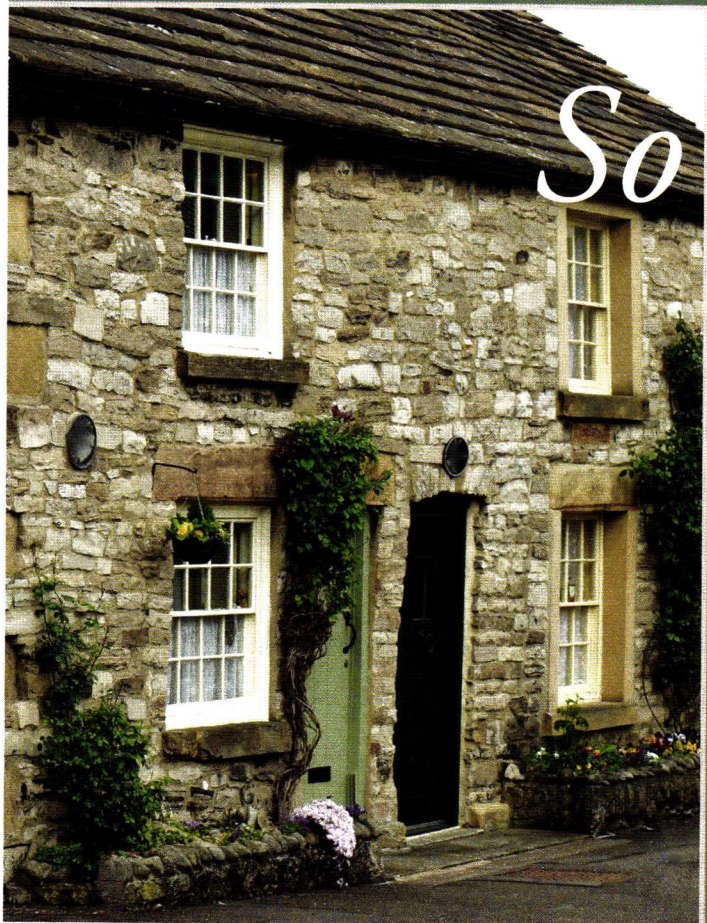


"QUIETLY MAKING A DIFFERENCE SINCE 1947"

1-800-544-3646

WWW.MONRAY.COM

This classic home
has central air



So can yours

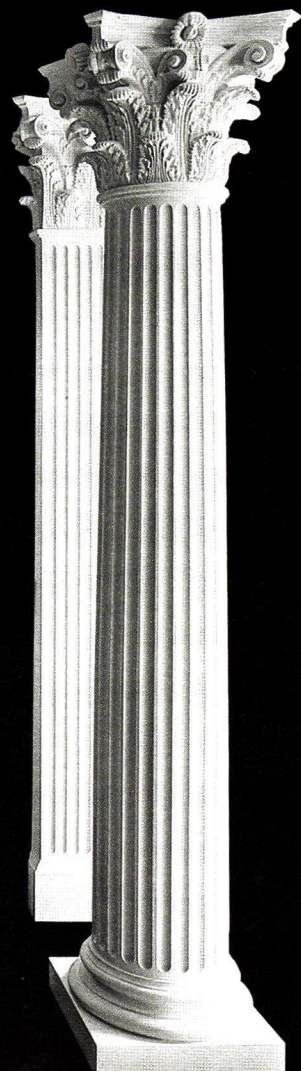


As the innovator of small-duct central air conditioning systems, SpacePak delivers uniform, year-round comfort, with fewer of the challenges common to other central heating and air-conditioning systems. No major renovations, loss of usable floor space, high energy bills, or unsightly components; simply quiet, cost-effective comfort for virtually any home, regardless of the structure's design, age, size, or construction type.



To see what you've been missing, contact SpacePak at (800) 465-8558 or www.spacepak.com.

CLICK ON NO. 1759



CHADSWORTH INCORPORATED

Congratulates the recipients of the
2016 PALLADIO AWARDS

ROBERT A.M. STERN ARCHITECTS
NEW DESIGN & CONSTRUCTION (commercial less than 30,000 sq.ft.)

GLAVE & HOLMES ARCHITECTURE
NEW DESIGN & CONSTRUCTION (commercial more than 30,000 sq.ft.)

FAIRFAX & SAMMONS ARCHITECTS
NEW DESIGN & CONSTRUCTION (less than 5,000 sq.ft.)

**ERIC WATSON ARCHITECT &
MICHAEL BURCH ARCHITECTS**
NEW DESIGN & CONSTRUCTION (more than 5,000 sq.ft.)

HISTORIC DOORS, LLC
SPECIAL AWARD FOR CRAFTSMANSHIP

NEUMANN LEWIS BUCHANAN ARCHITECTS
RESIDENTIAL SYMPATHETIC ADDITION

KASS & ASSOCIATES
RESIDENTIAL RESTORATION & RENOVATION

HBRA ARCHITECTS, INC.
COMMERCIAL RESTORATION & RENOVATION

SCHOOLY CALDWELL ASSOCIATES
COMMERCIAL SYMPATHETIC ADDITION

ARCHITECTURAL RESOURCES GROUP, INC.
PUBLIC SPACES, PARKS, GARDENS, STREETSCAPES

DOYLE HERMAN DESIGN ASSOCIATES
EXTERIOR SPACE

CENTERBROOK ARCHITECTS AND PLANNERS
RESIDENTIAL & MULTI-UNIT PROJECT

www.COLUMNS.com

1-800-COLUMNS

sales@columns.com

277 NORTH FRONT STREET, HISTORIC WILMINGTON, NC 28401

CLICK ON NO. 1580

Furniture that fits.



The cabinetry of choice.

Specified by discriminating architects
and building professionals for over 35 years.

800-999-4994 • www.crown-point.com

CLICK ON NO. 477

CROWNPOINT
CABINETRY

Fine Quality Custom Cabinetry
Handcrafted For Your Entire Home

KUIKEN



BROTHERS



CLASSICAL MOULDING INSPIRED BY 18TH CENTURY PATTERNS

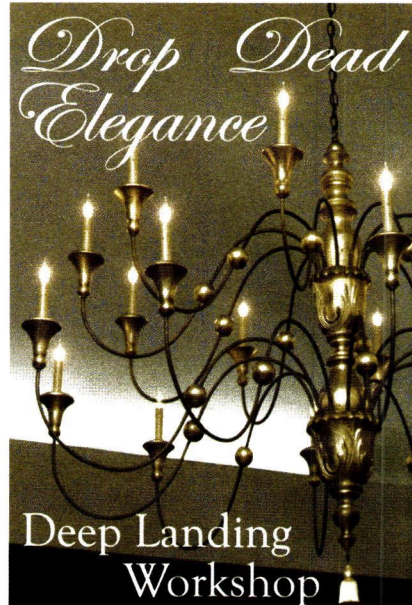
REQUEST A MOULDING DESIGN GUIDE AND STOCK PATTERN CATALOG
Call (201) 652-1912 Or Visit KUIKENBROTHERS.COM/CLASSICAL



KUIKEN BROTHERS COMPANY INC.
RESIDENTIAL & COMMERCIAL BUILDING MATERIALS *Since 1912*

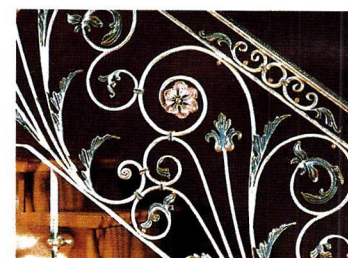
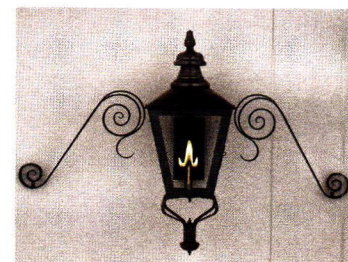
CLICK ON NO. 1739

*When contacting these
companies, please mention
that you saw them in
Period Homes magazine.*



Deep Landing Workshop

115 Deep Landing Rd
Chestertown Maryland 21620
877-778-4042 fax 410-778-4070
www.deeplandingworkshop.com
CLICK ON NO. 809



TRADITIONAL PRODUCT

Galleries

The world of traditional
products is wide and
wonderful. Traditional
Product Galleries makes
finding the right items
easy – and interesting.

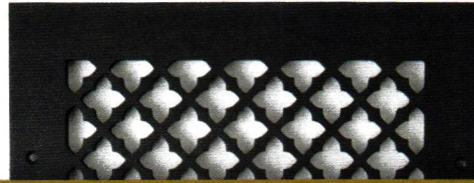
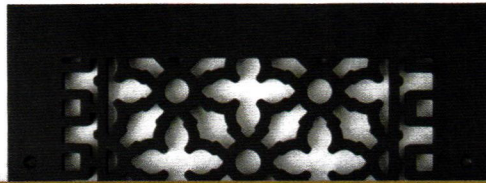
[www.
traditional
product
galleries
.com](http://www.traditionalproductgalleries.com)

Leading manufacturer of decorative registers, grilles, and vent covers.

Our uniquely crafted products are designed to give a home or commercial space the style, beauty & character you are looking for.

PACIFIC

REGISTER COMPANY



Low priced
High quality

All of our products are proudly made in the USA

Sold direct to the end user.
We are NOT a reseller and do not sell to resellers.

www.pacificregisterco.com

☎ 877-487-7500 ✉ info@pacificregisterco.com

CLICK ON NO. 1743



From balustrades, columns and porticos to pier caps, window surrounds and custom designs – our high specification cast stone designs provide affordable elegance to any project.

Browse our unrivalled collection **online** or **call** to request a catalog.



HADDONSTONE

haddonstone.com
866 733 8225

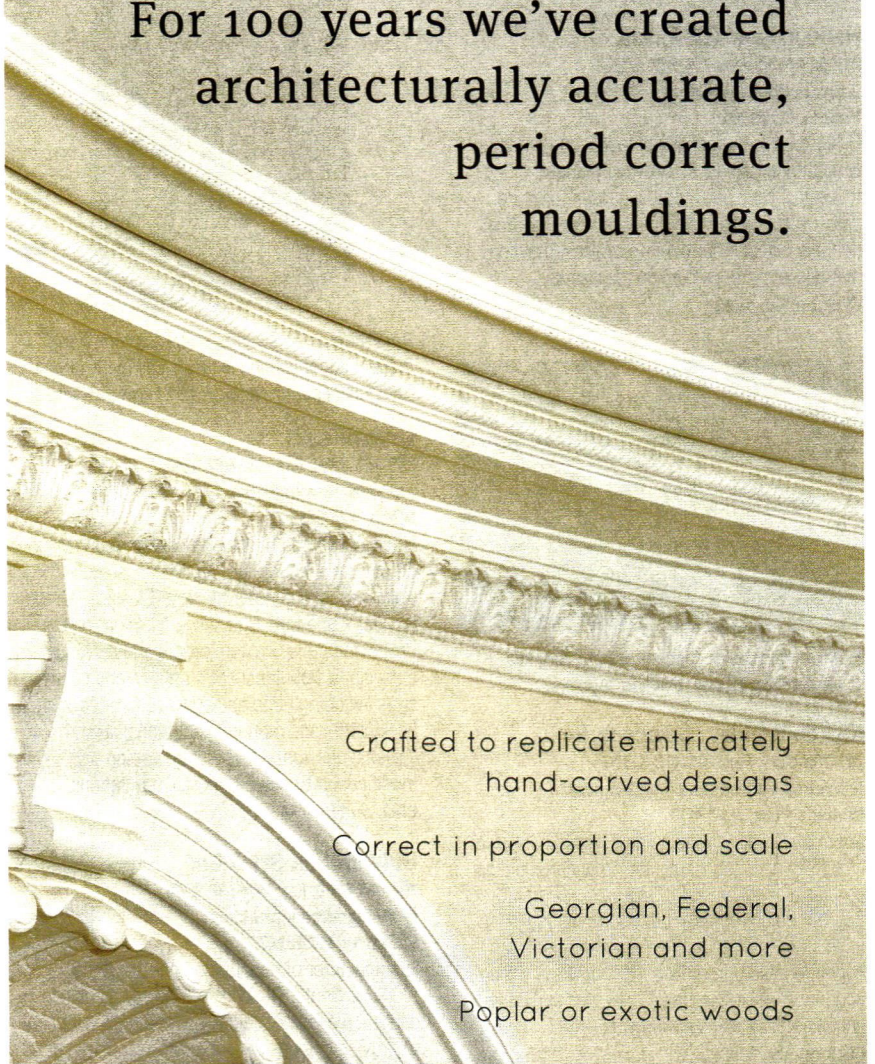
Made in the USA

CLICK ON NO. 4020

500 In-stock Mouldings

DRIWOOD

For 100 years we've created architecturally accurate, period correct mouldings.



Crafted to replicate intricately hand-carved designs

Correct in proportion and scale

Georgian, Federal, Victorian and more

Poplar or exotic woods

Order online. Visit Driwood.com today
888-245-9663 (TOLL FREE), sales@driwood.com

CLICK ON NO. 1756

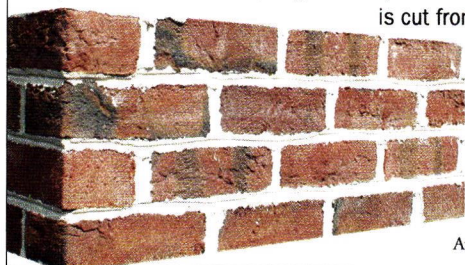


Old Carolina Brick Co.

475 Majolica Road, Salisbury, NC 28147
Phone: (704) 636-8850 Fax: (704) 636-0000
www.handmadebrick.com

GENUINE HAND MADE THIN BRICK

The classic antique beauty of Old Carolina Brick is created by hand moulding which imparts distinctive folds, finger marks, and other surface irregularities. Each Thin Brick is cut from an actual brick so they have the same individual characteristics of genuine Old Carolina handmade brick.



Old Carolina Handmade Thin Brick will give the elegance and unique appearance unequalled by conventional machine made brick.

Available in all our beautiful and unique colors

CLICK ON NO. 3130



The cast-stone eagle statue is available in both left- and right-hand versions from Haddonstone.

Haddonstone (USA), Ltd.

719-948-4554; Fax: 719-948-4285

www.haddonstone.com

Pueblo, CO 81001

U.S. based manufacturer of landscape ornament & architectural cast stonework: planters, fountains, sundials, statues, garden furniture, balustrades, gazebos, follies, columns, porticos, doors & window surrounds, cornices, molding, mantels & more; custom components.

Click on No. 4020



Kuiken Brothers specializes in historically styled woodwork and building supplies.

Kuiken Brothers Company, Inc.

201-705-5375; Fax: 201-475-2175

www.kuikenbrothers.com/classical

Midland Park, NJ 07432

Supplier of classical wood molding: KB Classical Moulding includes 70 classic American molding profiles; Early American, Georgian, Federal, Greek Revival, Colonial Revival & Traditional Revival; all in stock; milled from domestic Appalachian Poplar; double primed & buffed; decks & railings; window & door surrounds; CAD files available; online catalog; ships nationwide.

Click on No. 1739



Baja Mission Wall Light Copper Lantern; hand-made outdoor lighting fixture made in the USA from solid copper and brass by **Lanternland**.

Lanternland

855-454-5200; Fax: 480-962-1997

www.lanternland.com

Mesa, AZ 85210

Full line of rustic handmade copper and brass outdoor and indoor lighting. Styles include Colonial, Colonial Revival, New-Classical, Greek Revival, Cape Cod, Bungalow, Mission, Arts & Crafts and more. Custom orders and reproductions a specialty. Popular custom options and custom sizes including large and oversize fixtures, custom back plates and mounting solutions, custom sockets, gas lights, low voltage wiring and modification to meet 'dark sky' regulations.

Click on No. 1748

Old Carolina Brick Co.

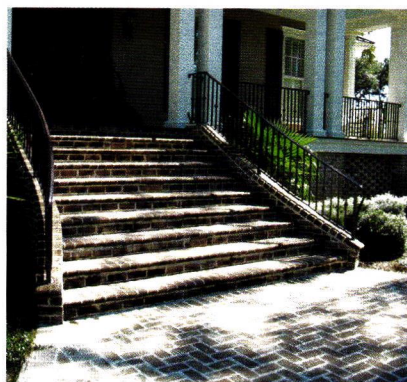
704-636-8850; Fax: 704-636-0000

www.handmadebrick.com

Salisbury, NC 28147

Manufacturer of handmade brick, pavers & fireplace fronts: 12 styles of pavers; special shapes, glazed headers & arches; fired with coal to provide bisques & unique colors; custom sizes in any quantity; restoration.

Click on No. 3130



Old Carolina Brick supplied the handmade bricks for these steps.



Pacific Register offers a selection of historically styled laser-cut wood covers and casings.

Pacific Register Company

805-487-7500; Fax: No fax

www.pacificregisterco.com

Oxnard, CA 93033

Manufacturer of registers: metal, wood & stone; many historic styles; accessories.

Click on No. 1743



Early American lighting, including fixtures such as the one shown here, is the specialty of **Period Lighting Fixtures**.

Period Lighting Fixtures, Inc.

800-828-6990; 413-664-7141; Fax: 413-664-0312

www.periodlighting.com

Clarksburg, MA 01247

Manufacturer & custom fabricator of handmade 18th- & early-19th-century lighting fixtures: original designs from museums such as Historic Deerfield, Old Sturbridge Village & Colonial Williamsburg.

Click on No. 301

Reggio Register Co., Inc., The

800-880-3090; Fax: 978-870-1030

www.reggioregister.com

Leominster, MA 01453

Manufacturer of decorative & functional cast-iron, brass, aluminum, steel & wood grilles: historic & contemporary designs for forced-air & high-velocity systems; large selection of sizes in stock.

Click on No. 5810



Renovation Brands/Reggio Register offers a wide selection of traditionally styled grilles and registers in solid wood.



SpacePak HVAC systems utilize unique flexible ductwork and is minimally invasive to install and while protecting architectural integrity.

Space-Pak

413-564-5530; Fax: 413-568-9613

www.spacepak.com

Westfield, MA 01085

Company provides 2' flexible tubing ductwork allowing warm and cool air to reach spaces in historic buildings without disturbing architectural finishes and structure.

Click on No. 1759



Worthington Millwork's pergola systems are available in standard or premium styles, and in 8-ft. and 10-ft-wide configurations.

Worthington Millwork

800-872-1608; Fax: 850-640-0488

www.worthingtonmillwork.com

Panama City Beach, FL 32413

Supplier of architecturally correct columns in wood or PermaCast: round & square; clear columns in 7 species; cornice moldings, balustrades, niches, medallions, mantels, pedestals & more.

Click on No. 1516

To order free product literature from a company listed in this Buying Guide, go to period-homes.com/rs and click on the reader service number that appears at the end of its caption.



Premium Quality Registers & Grilles
LIFETIME GUARANTEE

Trade Pros We've Got You Covered

- Discounts Starting at 20%
- Vast Inventory of Sizes for Immediate Delivery
- Reduced Freight Costs

Enroll today at www.ReggioRegister.com/trade



Solid Brass • Cast Iron • Aluminum • Wood

— AMERICAN CRAFTSMANSHIP —

ReggioRegister.com 1.800.880.3090

CLICK ON NO. 5810

Congratulations to the
PALLADIO WINNERS

ESPECIALLY

KASS AND ASSOCIATES

WE ARE GLAD WE WERE A PART
OF YOUR SUCCESS!

**FELBER
ORNAMENTAL**

610 275 4713 FELBER.NET PHILADELPHIA

CLICK ON NO. 2890

GAVIN
HISTORICAL
BRICKS

319-499-5664

Antique Brick and Stone
Shipped Nationwide Direct:

Street Pavers
Granite Cobblestone
Building Bricks
Clinker Bricks
Custom Brick Matching

info@HistoricalBricks.com
www.HistoricalBricks.com



Antique Brewery Bricks

CLICK ON NO. 191

30,000 SQ. FT. OF ARCHITECTURAL ANTIQUES & REPRODUCTIONS



ARCHITECTURAL ACCENTS

Specializing in 17th, 18th & 19th century European design

2711 Piedmont Rd Atlanta Ga 30305 P: (404) 266-8700



WWW.ARCHITECTURALACCENTS.COM



CLICK ON NO. 1202



ARCHITECTURAL GRILLE

CUSTOM DESIGNED, FABRICATED AND FINISHED



CUSTOM DESIGNS
HVAC GRILLES
METAL WORK
DECORATIVE PANELS
INTERIOR & EXTERIOR
HISTORICAL REPLICATIONS



PERFORATED GRILLES •

info@archgrille.com

BAR GRILLES •

1.800.387.6267

DECORATIVE SCREENS

www.archgrille.com

CLICK ON NO. 2220

FRP and HD POLYURETHANE CORNICES & MODILLIONS



Call 855-772-5534 to request a **FREE** quote or catalog

CLICK ON NO. 1516



Handmade
Copper Lanterns &
Outdoor Lighting

Banford
Post Light

HANDMADE
IN THE
USA

LANTERNLAND

855 454 5200
LANTERNLAND.COM

CLICK ON NO. 1748

BEAUTY. ELEGANCE. SIMPLICITY.



Grace your home with the timeless sophistication of 18th and Early 19th Century lighting. The country's largest collection of Early American designs, reproduced entirely by hand from original fixtures in museums such as *Historic Deerfield* and *Olde Sturbridge Village*. **PERIOD LIGHTING** chandeliers, scones and lanterns will add a quiet beauty to your home and surroundings.



PERIOD LIGHTING FIXTURES INC.

ARTISANS SINCE 1974 PERIODLIGHTING.COM 800 828-6990
167 RIVER ROAD CLARKSBURG, MA 01247

CLICK ON NO. 301

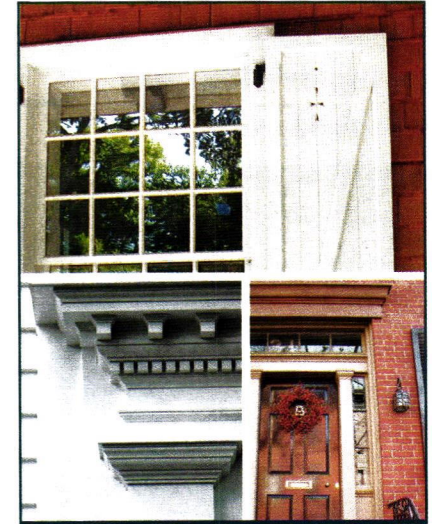
To order free product literature from a company listed in this Buying Guide, go to period-homes.com/rs and click on the reader service number that appears at the end of its caption.



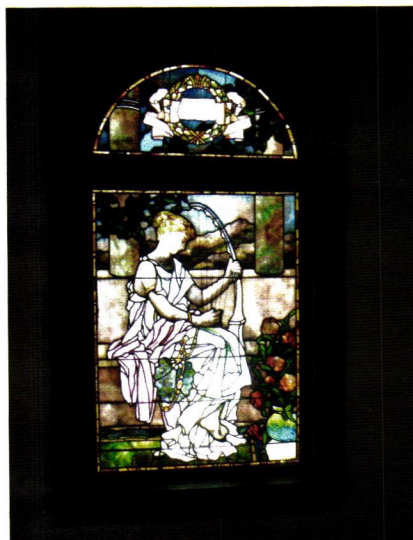
Mauer & Shephard Joyners, LLC
17th, 18th & Early 19th Century Custom Millwork:
Windows, Doors & Entryways Raised Panel Walls,
Old Glass, Moldings, Wide Pine Flooring,
Beaded & Feather Edge Boards, & more
860-633-2383 • www.TheCooperGroupCT.com



See Our Ad on Back Cover
ARTISTIC
Doors and Windows
CLICK ON NO. 363



COMPOSITE, WOOD & METAL WINDOWS



Allegheny Restoration restored this historic stained-glass window.

Allegheny Restoration & Builders Inc.
304-381-4820; Fax: 304-381-4825

www.alleghenyrestoration.com

Morgantown, WV 26508

Manufacturer of reproduction & custom wood doors & windows; window replication, restoration & repair; art glass; hardware replacement; storefronts & ecclesiastical projects; 15 years of experience; nationwide.

Click on No. 1004



This reproduction 12/12 window with fan was manufactured by **Architectural Components**.

Architectural Components, Inc.

413-367-9441; Fax: 413-367-9461

www.architecturalcomponentsinc.com

Montague, MA 01351

Custom fabricator of wood windows & doors: traditional details, materials & joinery; paneled, carved, louvered, French, pocket & art-glass doors; complete entryways; screen & storm doors; casings & moldings; mantels; replications.

Call for more information

Artistic Doors & Windows

800-278-3667; Fax: 732-726-9494

www.artisticdoorsandwindows.com

Avenel, NJ 07001

Custom fabricator of hardwood doors & windows: all fenestration styles & types; IBC 2000 impact-approved entry doors & windows; stile-&-rail interior doors with fire ratings to 90-min. positive pressure; multiple hardwood species.

Click on No. 363



This double-hung window unit with a fixed-arch fan was constructed by **Artistic Doors & Windows** with mortise-and-tenon joinery.



Connor Homes built these bowed reproduction windows for a building in Boston's historic Back Bay neighborhood.

Connor Homes

802-382-9082; Fax: 802-382-9084

www.connorbuilding.com

Middlebury, VT 05753

Designer & manufacturer of mill-built architecture for classic American homes: Colonial, Federal, Georgian, Greek Revival, Shingle, Bungalow & Colonial Revival styles; interiors included; barns & outbuildings; nationwide shipping.

Click on No. 1614

Crittall Windows, Ltd.

011-44-1376530800; Fax: 011-44-1376530801

www.crittall-windows.com

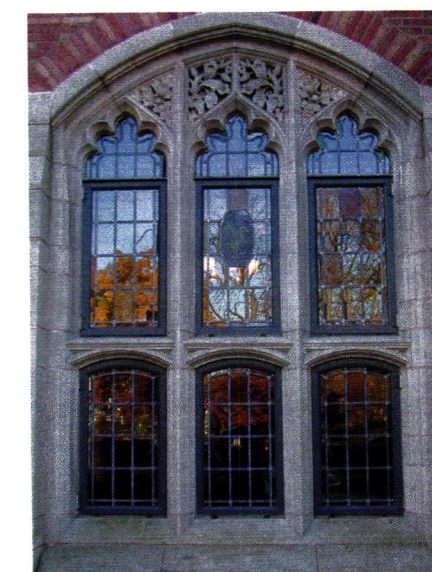
Witham, Essex CM8 3UN U.K.

Manufacturer of steel window & door systems: single hung, casement, pivot, awning, projecting, fixed lite & round top; historical restoration & renovation; minimum maintenance; custom shapes & sizes.

Click on No. 373



ARCHITECTURAL COMPONENTS
Finely Crafted Reproduction and Custom Windows, Doors & Architectural Millwork
413-367-9441
architecturalcomponentsinc.com



These steel windows were manufactured by **Crittall Windows**.



The Gardner-Pingree House in Salem, MA, features custom-colored magnetic one-lite windows from **Allied Window**.

Allied Window, Inc.

800-445-5411; Fax: 513-559-1883

www.alliedwindow.com

Cincinnati, OH 45241

Manufacturer of "invisible" interior/exterior aluminum storm windows: all custom shapes & colors; screens; magnetic, sliding, lift-out & mechanical fastenings; UV-resistant, low-E, tempered, acrylic & lexan glazing.

Click on No. 690



STEEL WINDOWS

www.crittall-windows.com



**THE ORIGINAL, THE BEST
TIMELESS ELEGANCE**

CLICK ON NO. 373

ALLEGHENY RESTORATION & BUILDERS INC

SPECIALIZING IN
WOOD WINDOW
and DOOR RESTORATION



Using the Secretary of
Interior's Rehabilitation
Guidelines, we are able
to restore or recreate
historically accurate wood
windows and doors in our
millwork shop.



1000 Coombs Farm Dr.
Suite #202
Morgantown, WV 26508

phone 304-381-4820 • fax 304-381-4825
WWW.ALLEGHENYRESTORATION.COM

CLICK ON NO. 1004

Jim Illingworth Millwork, LLC

Architectural • Historical • Traditional
We Custom Build
Wood: Doors - Windows - Moldings



Ph: 315-232-3433 • Fax: 315-232-3645
Toll Free: 877-390-2392
8-10 Wardwell St. • Adams, NY 13605
Website: www.jimillingworthmillwork.com
www.illingworthmillwork.com

CLICK ON NO. 2063



Parrett Windows & Doors built this large,
multi-unit window set to customer specifications.

Parrett Windows & Doors

800-541-9527; Fax: 877-238-2452
www.parrettwindows.com
Dorchester, WI 54425

Nationwide manufacturer of custom wood
& aluminum-clad windows & doors: durable
products built to specification; period specific,
historic replication or standard profiles & designs;
any geometric shape, numerous wood species
& complete finishing capabilities; historical
replications; custom wood doors in numerous
species with complete finishing options; screen
doors, casings & moldings.

Click on No. 3003

Seekircher Steel Window Corp.

914-734-8004; Fax: 914-734-8009
www.seekirchersteelwindow.com
Peekskill, NY 10566

Repairer of steel casement windows: performed
on location; more than 7,000 windows repaired
annually in 26 states; large collection of vintage
steel casement windows, doors & hardware;
family-owned business established in 1977.

Wood Window Workshop

800-724-3081; Fax: 315-733-0933
www.woodwindowworkshop.com
Utica, NY 13501

Manufacturer of custom wood windows & doors:
any size, shape & species; traditional mortise-&
tenon construction with true-divided lites; historic
reproduction of double-hung, casement, arched
& bent units.



These custom windows were fabricated by Jim
Illingworth Millwork.

Illingworth Millwork, LLC

315-232-3433
www.jimillingworthmillwork.com
Adams, NY 13605

Manufacturer of custom wood windows, doors &
moldings: for homes & historic buildings; matches
any existing wood windows, doors, moldings;
custom millwork.

Click on No. 2063

Kolbe Windows & Doors

800-955-8177; Fax: 715-845-8270
www.kolbe-kolbe.com
Wausau, WI 54401

Manufacturer of wood, aluminum-clad & vinyl
energy-efficient windows & doors: custom styles;
variety of colors & wood species; many products
designed as historic replications.

Click on No. 1608



Kolbe Windows & Doors manufactures Sterling
double-hung windows with concealed jamb liners.

Marvin Windows and Doors

888-537-7828; Fax: 651-452-3074
www.marvin.com
Warroad, MN 56763

Manufacturer of all-wood & clad-wood windows
& doors: round top, oval, casement & double
hung; custom shapes & historic window
replication; dual durometer, bulb & leaf weather
stripping; storm windows; numerous design
choices & glazing options.

Click on No. 1611

Maurer & Shepherd Joiners

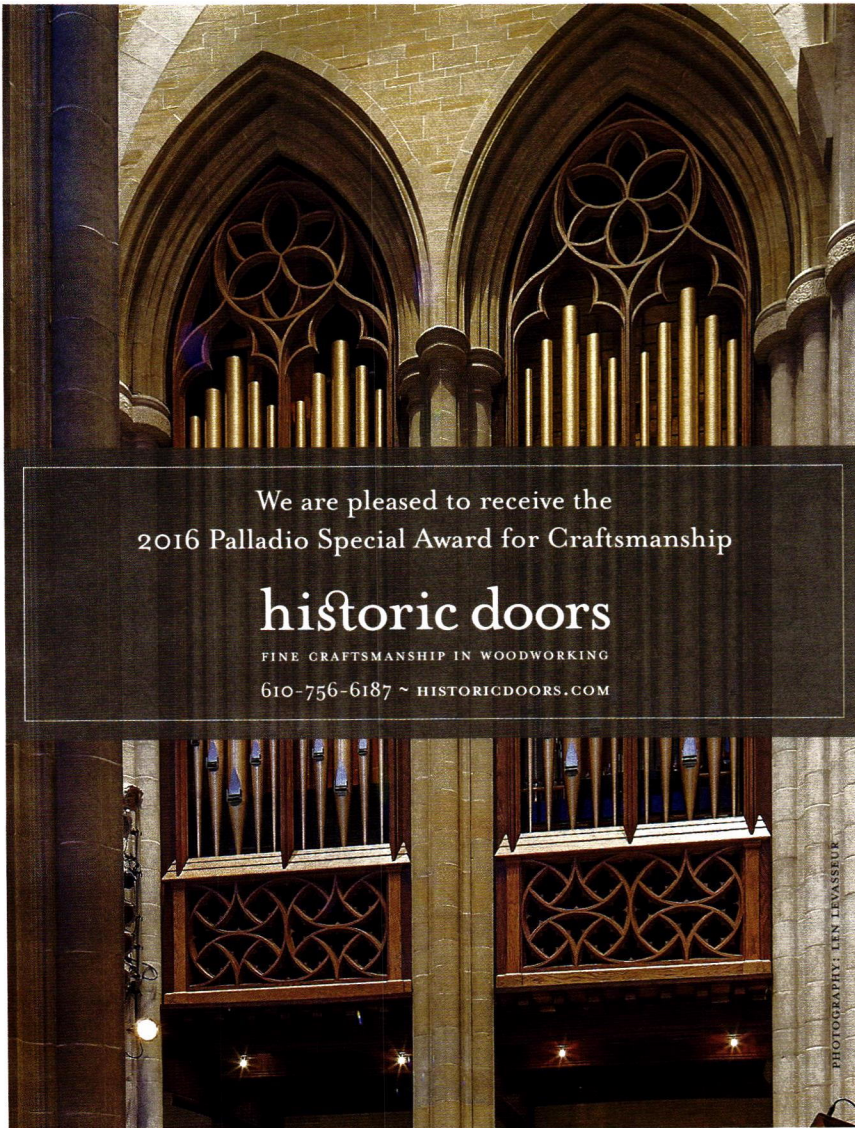
860-633-2383; Fax: 860-633-7231
www.msjoiners.com
Glastonbury, CT 06033

Manufacturer of historic reproduction
architectural millwork: windows, doors,
entryways & raised paneling; pine & mahogany.
Call for more information



This pine window was manufactured by Maurer
& Shepherd to replicate an historic style.

*To order free product literature
from a company
listed in this Buying Guide, go to
period-homes.com/rs
and click on the reader service
number that appears
at the end of its caption.*



We are pleased to receive the
2016 Palladio Special Award for Craftsmanship

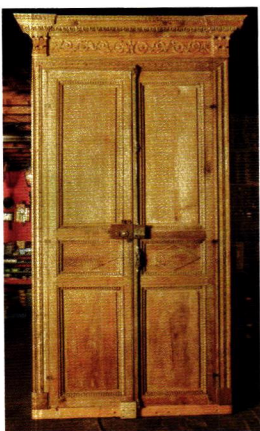
historic doors

FINE CRAFTSMANSHIP IN WOODWORKING

610-756-6187 ~ HISTORICDOORS.COM

CLICK ON NO. 3570

DOORS & ENTRY WAYS



This French entryway is one of the many impressive doors in the 30,000 sq. ft. of architectural antiques in **Architectural Accents**.

Architectural Accents
404-266-8700; Fax: 404-266-0074
www.architecturalaccents.com
Atlanta, GA 30305

National supplier of architectural antiques: mantels, doors, hardware, tile, columns, furnishings, mirrors, statuary, fountains, iron railings, gates, chandeliers, sconces & exterior lighting; antique heart pine flooring.

Click on No. 1202

Artistic Doors & Windows
800-278-3667; Fax: 732-726-9494
www.artisticdoorsandwindows.com
Avenel, NJ 07001

Custom fabricator of hardwood doors & windows: all fenestration styles & types; IBC 2000 impact-approved entry doors & windows; stile-&-rail interior doors with fire ratings to 90-min. positive pressure; multiple hardwood species.

Click on No. 363



Artistic Doors & Windows
custom manufactured these hardwood doors.



Historic Doors
designed and built this Federal-style farmhouse entry with a true-divided-lite transom and curved raised paneling.

Historic Doors
610-756-6187; Fax: 610-756-6171
www.historicdoors.com
Kempton, PA 19529

Custom manufacturer of wood doors: circular casings & moldings; restoration & period-style construction; garage doors, fences & gates.

Click on No. 3570



DISTINCTIVE SOLID WOOD DOORS FOR YOUR HOME

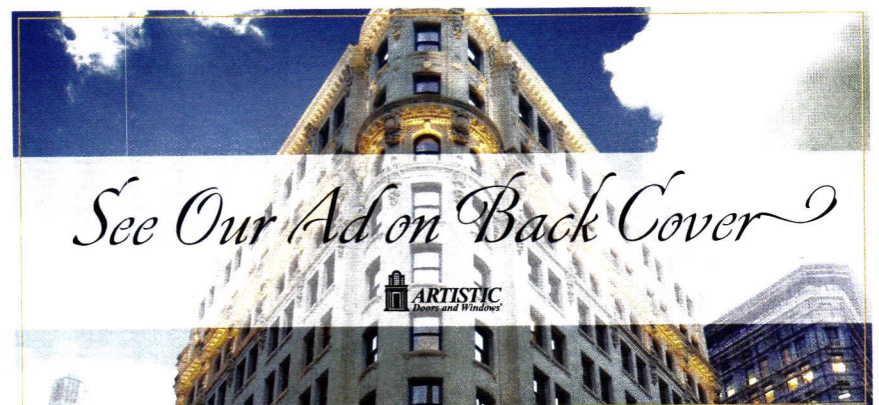
Handmade by our craftsmen in any size, design and wood!

*Screen & Storm Doors - Entrance Units - Interior Doors
Dutch - French - Louver - Three Season Porches & More...*

FOR CATALOG OR QUOTE, CALL: 1 (800) 787-2001



CLICK ON NO. 1727

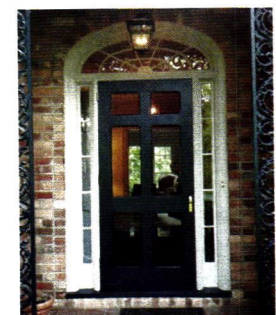


CLICK ON NO. 363

Vintage Doors
800-787-2001; Fax: 315-324-6531
www.vintagedoors.com
Hammond, NY 13646

Custom manufacturer of authentic solid wood doors: handcrafted by expert craftsmen in any design, size & shape; entrance doors; interior doors; Dutch doors; screen & storm doors; three-season porch panels; pet doors & gates; garden gates & much more; proudly made in USA; nationwide delivery.

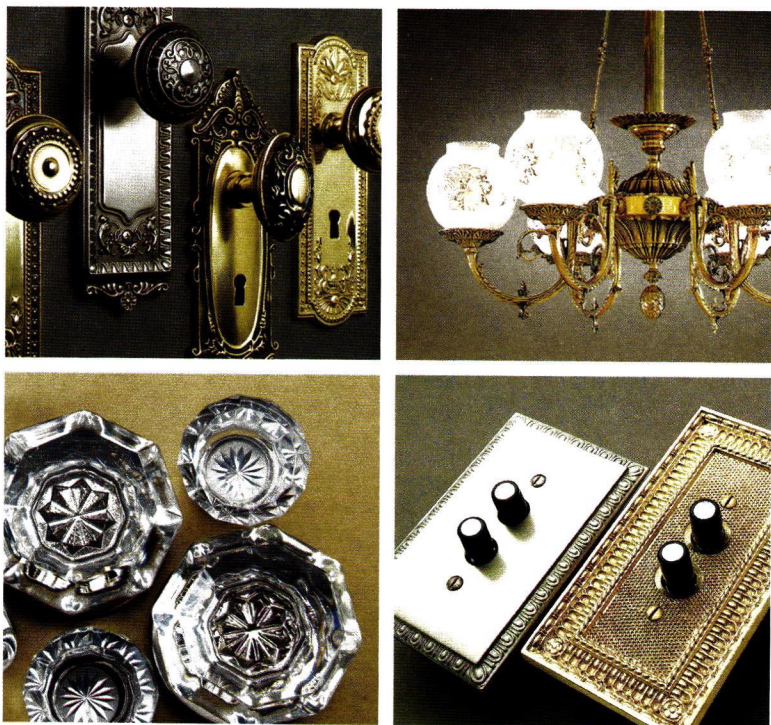
Click on No. 1727



This "Twilight" door with brass hardware was fabricated by **Vintage Doors**.

HOUSE OF ANTIQUE HARDWARE

Period Perfect for the Traditional Builder

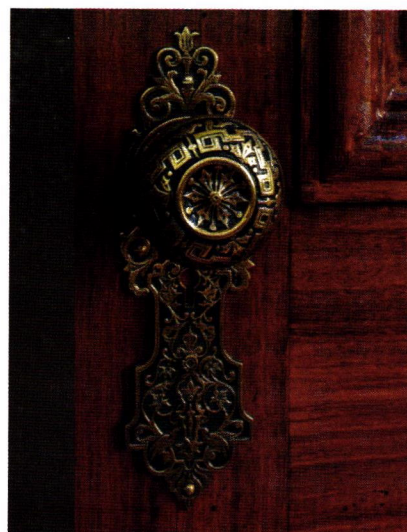


Join Our Professional Trade Partner Program
Quality Period Products • Everyday Savings • Dedicated Support

www.HouseofAntiqueHardware.com/tradeplus

CLICK ON NO. 339

DOOR & WINDOW HARDWARE



Original, unused builders' hardware dating from 1860 to 1960 is the specialty of **American Historic Hardware**.

American Historic Hardware

607-547-1900; Fax: No fax

www.ahhardware.com

Cooperstown, NY 13326

Supplier of unused, original builders' hardware: 1860s to 1940s; knobs, escutcheons, locksets, hinges, door knockers, doorbells, push plates & more; shutter & window hardware; brass, bronze, steel & nickel; restored antique hardware.

Click on No. 8410

Architectural Accents

404-266-8700; Fax: 404-266-0074

www.architecturalaccents.com

Atlanta, GA 30305

National supplier of architectural antiques: mantels, doors, hardware, tile, columns, furnishings, mirrors, statuary, fountains, iron railings, gates, chandeliers, sconces & exterior lighting; antique heart pine flooring.

Click on No. 1202

Architectural Resource Center

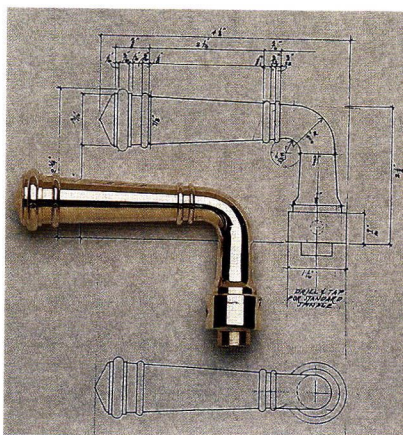
800-370-8808; Fax: 603-942-7465

www.aresource.com

Northwood, NH 03261

Supplier of door, window & cabinet hardware: pulleys, weights, chains, lifts, locks, levers, hinges, escutcheon plates, door stops & more.

Click on No. 1670



E.R. Butler & Co. manufactures historically styled hardware such as this Early American-style brass handle.

E.R. Butler & Co.

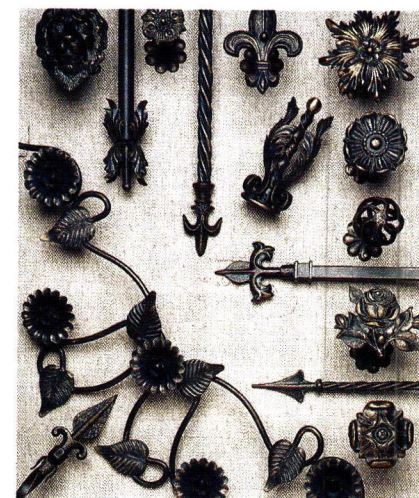
212-925-3565; Fax: 212-925-3305

www.erbutler.com

New York, NY 10012

Manufacturer of Early American door, window & furniture hardware: 19th-century shell-shanked crystal, porcelain & wood trimmings; brass, bronze, nickel-silver & wrought iron; custom-plated & -patinated finishes; restoration work.

Click on No. 2260



Hand-forged wrought-iron drapery hardware from **Gaby's Shoppe** is offered in many styles.

Gaby's Shoppe

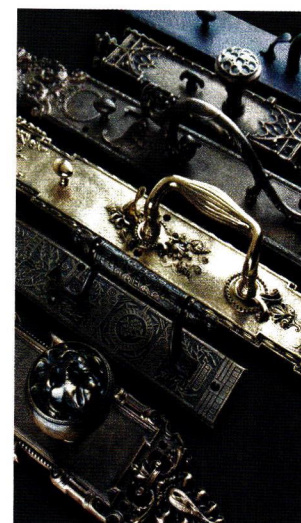
800-299-4229; Fax: 214-748-7701

www.gabys.com

Dallas, TX 75207

Manufacturer of hand-forged wrought-iron drapery hardware & accessories: custom rods, finials, brackets & holdbacks; European metalworking skills; handcrafted & hand finished.

Click on No. 2520



House of Antique Hardware offers a wide selection of antique-reproduction entry hardware, as well as hardware for interior doors, cabinets, furniture and windows.

House of Antique Hardware

888-223-2545; Fax: 503-233-1312

www.hoah.us

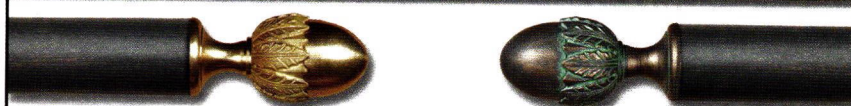
Portland, OR 97232

Supplier of door, window, cabinet, furniture, electrical & bath hardware: original antique & vintage reproductions; Federal, Victorian & Arts & Crafts styles; hardware specialists available to assist with renovation projects.

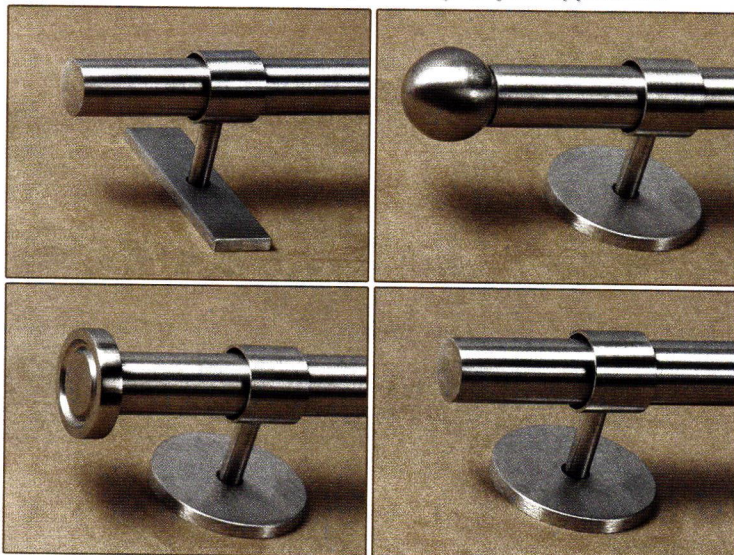
Click on No. 339

Gaby's Shoppe

Manufacturer of Fine Wrought Iron

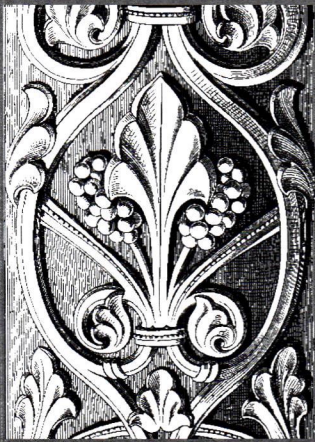


Our extensive collection ranges from fine hand-finished wrought iron to richly grained stainless steel. Because we manufacture our products right here in the U.S., we are able to offer custom items such as curved bay windows or brackets sized specifically for your application.



View the complete Gaby's Shoppe catalog online: www.gabys.com
1311 Dragon St. • Dallas, Texas 75207 • 1-800-299-4229

CLICK ON NO. 2520



Surf the Industry

Online data & links for hundreds of suppliers of products & services for restoration, renovation and historically inspired new construction for residential projects.

www.
period-homes
.com



TRADITIONAL BRASS HARDWARE

"A Veteran Owned Business"

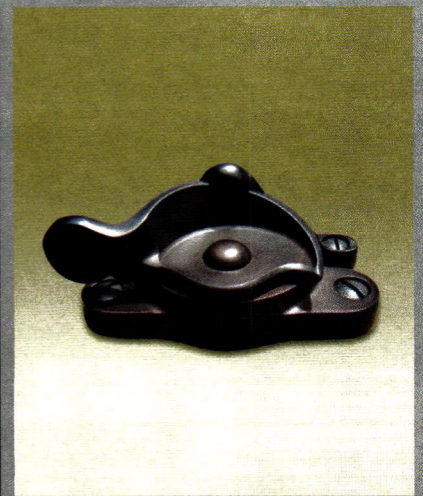


Pulleys
CUSTOM CUT
Square & Round
Phillips & Slotted Screws

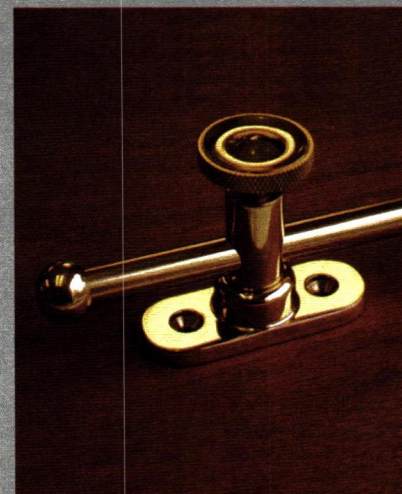
Stackable Weights
Iron & Lead
Square or Round

For a FREE Catalog Call
1-800-370-8808
www.aresource.com

CLICK ON NO. 1670



www.phelpscompany.com



CLICK ON NO. 6001



JUMP IN THE CONVERSATION

@PeriodHomes
@TradBuilding
@TradBldgShow

Join us on Twitter for news and views about the world of traditional building and design.



SOLID BRASS PULLEY



SRS Hardware's ball bearing pulleys are the finest available in appearance, function and durability. Featuring a carefully forged and machined one piece housing for strength and ease of installation, these pulleys will provide a lifetime of smooth and silent operation. Available in 2-1/4" and 2-1/2" sizes and five finishes.

Find these and our other restoration products at
srshardware.com

CLICK ON NO. 1744



**AMERICAN
HISTORIC
HARDWARE**

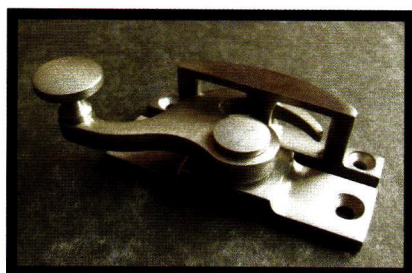
**Specializing In
Original Stock
Builders' Hardware
Because:
Old Buildings Deserve
Old Hardware**

AHHardware.com

CLICK ON NO. 8410



CLICK ON NO. 2260



This historically styled sash lock is available from **Phelps Company**.

Phelps Company
603-336-6213; Fax: 603-336-6085
www.phelpscompany.com
Hinsdale, NH 03451
Manufacturer & designer of traditional, hot-forged solid-brass window hardware: sash pulleys, weights, chains & cords, sash locks & lifts, casement stays & fasteners, storm/screen hangers, bronze screen wire & screen-door latch sets.
Click on No. 6001



This 2-1/4" solid brass sash pulley is available in a variety of finishes from **SRS Hardware**.

SRS Hardware
401-954-9431; Fax: No fax
www.srshardware.com
Dallas, TX 75219
Manufacturer and distributor of traditional hardware for wooden windows. Full line from weights to pulleys, lifts and locks.
Click on No. 1744

SHUTTERS & SHUTTER HARDWARE



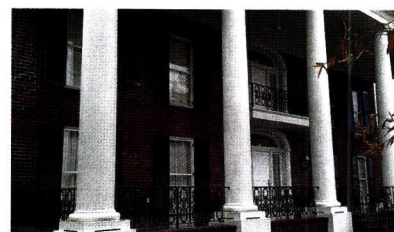
Acorn hand forged these 6 3/4- and 8-in. shutter holdbacks.

Acorn Mfg.
508-339-4500; Fax: 508-339-0104
www.acornmfg.com
Mansfield, MA 02048
Manufacturer of Early American-style hand-forged iron registers & grilles & iron & stainless-steel door & window hardware: latches, knockers & pulls; garage, shutter, furniture & wood-gate hardware; Tremont steel-cut nails for restoration projects.
Click on No. 1690



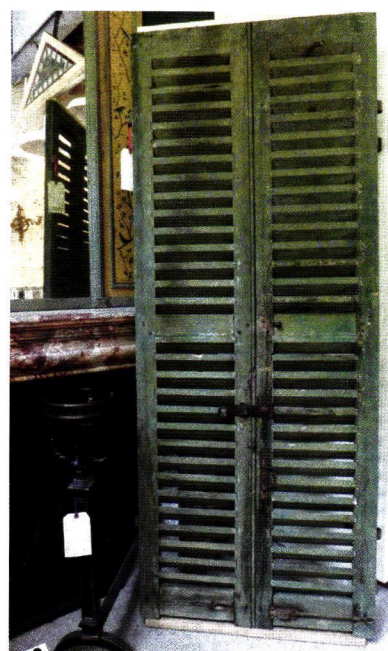
Brandywine provided the exterior shutters for the Palladio winning project, Howell House.

Brandywine Forge
610-948-5116; Fax: 610-948-9629
www.bvforge.com
Royersford, PA 19468
Restoration blacksmith: stock, custom & semi-custom hardware for interior & exterior applications; shutter hardware; wide range of regional & period variations available.
Click on No. 405



Custom Shutter Co. provided these shutters for a Greenwood, MS, project. They are Fiberglass Composite Louvered with Stainless Steel L-Hinges and S-Holdbacks.

Custom Shutter Company
800-470-0685; Fax: 251-545-4120
www.customshuttercompany.com
Fairhope, AL 36532
Supplier of exterior fiberglass & composite shutters & stainless-steel shutter hardware: decay resistant & historically inspired; unlimited custom options & style selection; advanced finishing process; lifetime finish & unlimited color selection.



Original 19th century louvered French shutters in various sizes available at **Architectural Accents**.

Architectural Accents
404-266-8700; Fax: 404-266-0074
www.architecturalaccents.com
Atlanta, GA 30305
National supplier of architectural antiques: mantels, doors, hardware, tile, columns, furnishings, mirrors, statuary, fountains, iron railings, gates, chandeliers, sconces & exterior lighting; antique heart pine flooring.
Click on No. 1202




John Wright Company's Alligator Shutter Dogs are weather-resistant, coastal shutter hardware made from solid cast iron. Each piece is coated with John Wright's signature WeatherWright™ finish, preventing rust, wear, and corrosion from weather and sea spray.

John Wright Company
717-252-4442; Fax: 717-252-3392
www.jwright.com
Wrightsville, PA 17368
Manufacturer of reproduction building hardware: cast iron & forged steel; specializes in shutter and window hardware; for fine renovation & quality new construction; since 1880.
Click on No. 1605

To order free product literature from a company listed in this Buying Guide, go to period-homes.com/rs and click on the reader service number that appears at the end of its caption.

When contacting these companies, please mention that you saw them in **Period Homes** magazine.



Brandywine hardware on 2015 Preservation Society of Charleston Carolopis award winning restoration -- Charleston, SC.

CLICK ON NO. 405

American Made Period Hardware for Shutters, Gates and Doors

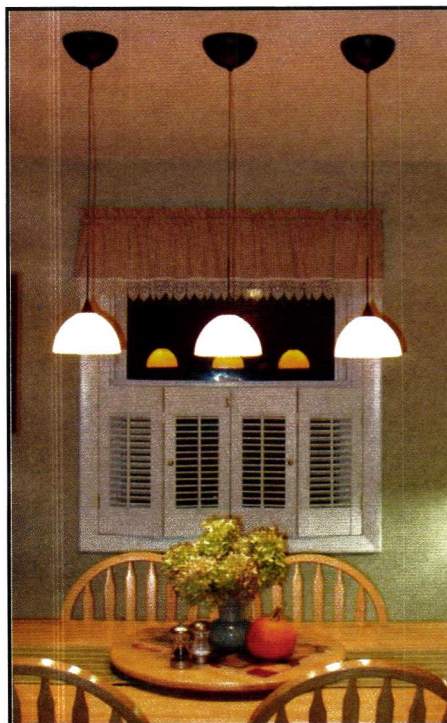
- *Available in mild and stainless steel, historic and contemporary styles
- * Stock & custom functional shutter solutions
- *Expert advice on hardware selection & installation

Brandywine Forge

Brandywine Forge supplied the exterior shutter hardware in the winning 2016 Palladio Award project of the Howell House - Panama City, FL by Eric Watson Architect, P.A.

610-948-5116

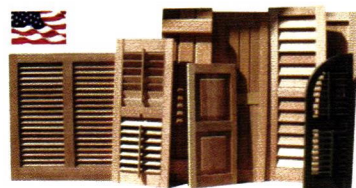
www.bvforge.com



CLICK ON NO. 5005



Interior & Exterior custom wood shutters in all types and sizes, including Hard-To-Find Traditional Interior Moveable Louvers
Call (203) 245-2608
www.shuttercraft.com



Shutter Hardware by Acorn.

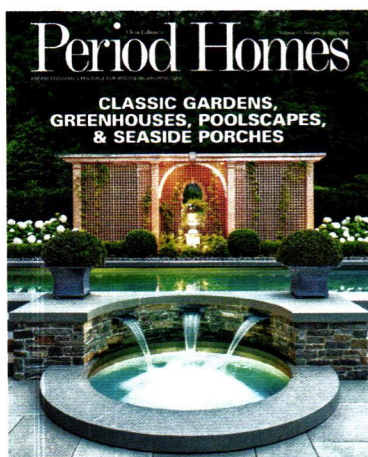


Acorn Manufacturing Co., Inc.
1.800.835.0121
www.acornmfg.com

Quality & Craftsmanship forged together for a lifetime.

CLICK ON NO. 1690

If you'd like to order a
gift
 subscription
 for a colleague,
 just call 800-548-0148




Shutter Dogs, Shutter Hinges
Shutter Slide Bolts, Strap Hinges
Interior Window Hardware
Specialty Hardware, Shelf Brackets
Cabinet Knobs & Pulls
Cabinet & Door Hinges
1-800-444-9364
www.jwright.com
 Cast Iron & Forged Hardware Specialists

CLICK ON NO. 1605

A Home Deserves More than Ordinary Shutters



Ask for **TIMBERLANE** Shutters

The **FINEST SHUTTERS** *ever* made.

- Expect superior quality and workmanship.
- Customize your shutters to the limits of your imagination.
- Receive unsurpassed customer service.
- Get started. Timberlane Shutters are **not available in stores**. We work directly with homeowners and building professionals.



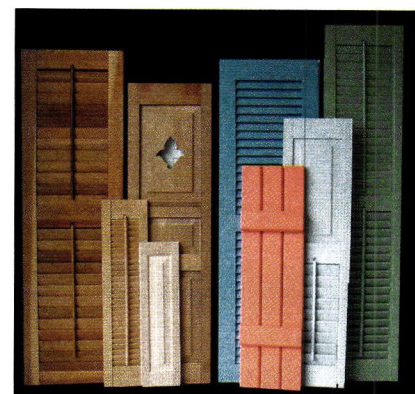
Timberlane, Inc. • 150 Domorah Drive
Montgomeryville, PA 18936 • 800 250 2221



Available in maintenance-free Endurian™ and Premium Wood Shutters

Get your free catalog from
TIMBERLANE SHUTTERS at
FINESHUTTERS.COM

CLICK ON NO. 1056

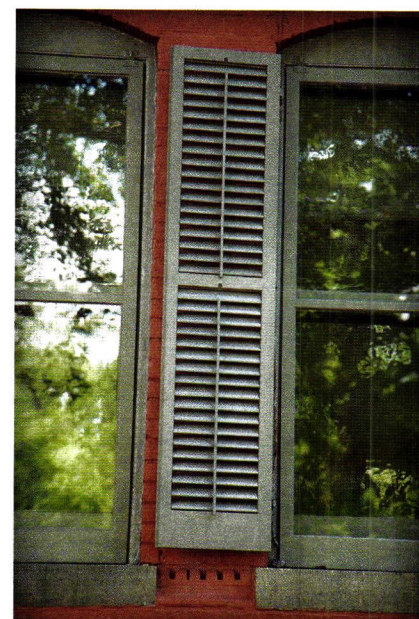


Shuttercraft offers a wide selection of both interior and exterior shutters.

Shuttercraft, Inc.
203-245-2608; Fax: 203-245-5969
www.shuttercraft.com
Madison, CT 06443

Manufacturer of mortise-&tenon wood shutters: cedar & mahogany exterior movable & fixed louver, board & batten & raised panel; cutouts, capping, arches & more; authentic mounting hardware; interior louvers, Colonial panels & open frame; full painting services; shutters all made in the U.S.; family owned & operated; shipped nationwide since 1986.

Click on No. 5005



Timberlane's replica shutters replicate the original shutters on Roosevelt's 150-year-old home, Sagamore Hill.

Timberlane, Inc.
215-616-0600; Fax: 215-616-0749
www.timberlane.com
Montgomeryville, PA 18936

Custom manufacturer of handcrafted custom exterior shutters: maintenance-free Endurian, Premium Wood, Advantage & Fundamentals lines; Western red cedar & Honduras mahogany; selection of period-accurate exterior shutter hardware; historically accurate standard designs.

Click on No. 1595 for Endurian; 1056 for wood

*To order free product literature from a company listed in this Buying Guide,
go to period-homes.com/rs and click on the reader service number
that appears at the end of its caption.*



ALLIED WINDOW, INC.
CUSTOM
"Invisible" Storm Windows®

11111 Canal Road, Cincinnati, Ohio 45241 www.alliedwindow.com • 800.445.5411 • fax: 513.559.1883

Allied Window has a strong commitment to high quality custom storm windows & the capability to meet the needs of any home or other building with single glass.

Interior & Exterior Windows
Custom Colors,
Custom Screens & Special Shapes
Historic, Residential &
Commercial Buildings
Energy Savings—Approximately 50%
Sound Reduction—Up to 50%



CLICK ON NO. 690



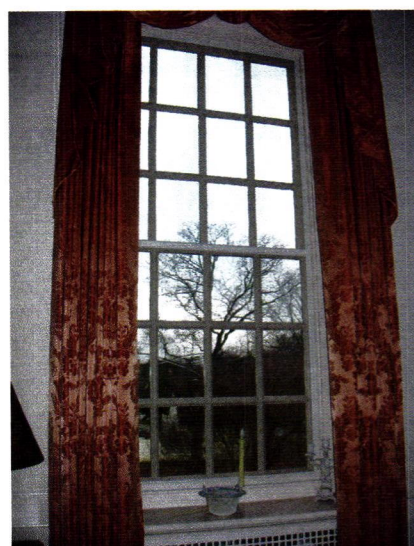
COPPA WOODWORKING, INC.
(310) 548-4142 www.coppawoodworking.com

Made in the USA
Over 300 Styles
Custom Designs
Any Size
And So Much More!

WOOD SCREEN DOORS & STORM DOORS

CLICK ON NO. 9600

SCREENS & STORMS



Allied Window supplied the operating Magnetic One Lite (MOL) "invisible" storm windows for the Governor's Mansion in Nashville, TN.

Allied Window, Inc.
800-445-5411; Fax: 513-559-1883
www.alliedwindow.com
Cincinnati, OH 45241

Manufacturer of "invisible" interior/exterior aluminum storm windows: all custom shapes & colors; screens; magnetic, sliding, lift-out & mechanical fastenings; UV-resistant, low-E, tempered, acrylic & lexan glazing.

Click on No. 690

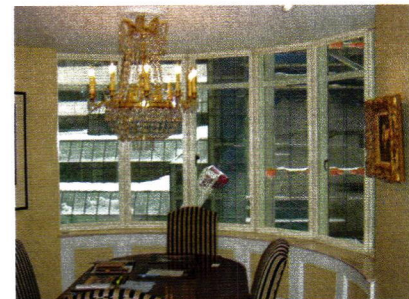
Arch Angle Window & Door
330-723-2551; Fax: 330-722-4389
www.archangleohio.com
Medina, OH 44256

Custom fabricator of special shape aluminum storm doors, windows & screens: round top, arch top, Cathedral & Gothic designs; tempered & low-E glass.

Click on No. 52



Arch Angle Window & Door manufactured this traditionally styled storm door.



These windows from Cityproof are designed to reduce noise and eliminate dirt infiltration and drafts.

Cityproof Windows
718-786-1600; Fax: 718-786-2713
www.cityproof.com
Long Island City, NY 11101

Custom manufacturer of interior window systems in aluminum: noise reducing & draft/dirt eliminating; thermal control; storm/screen combos, round top & custom shapes; mechanical fastenings; acrylic, lexan, UV-resistant, low-E & more.

Click on No. 2390

To order free product literature from a company listed in this Buying Guide, go to period-homes.com/rs and click on the reader service number that appears at the end of its caption.



indow

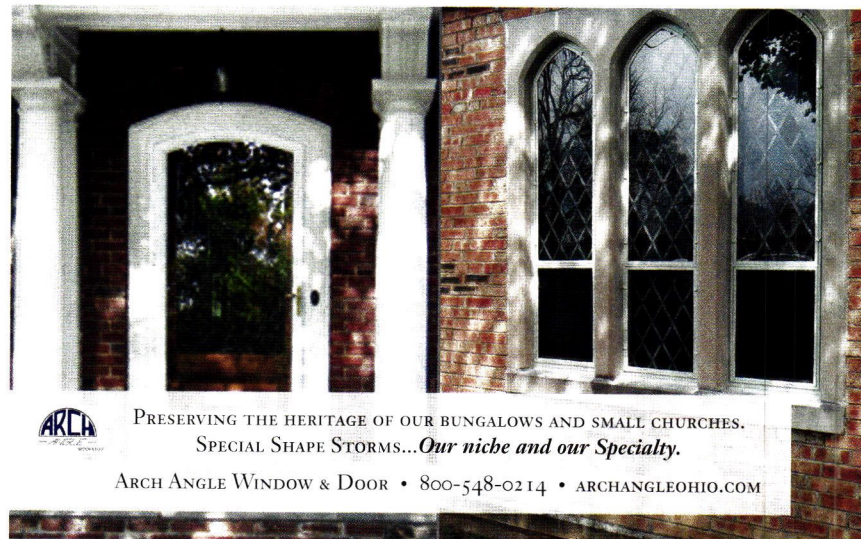
COMFORT FOR OLD WINDOWS.

WINDOW INSERTS THAT INSTALL WITH NO MOUNTING BRACKETS.

Keep the comfort inside.

indowwindows.com | 503.822.3805

CLICK ON NO. 1746



ARCH ANGLE WINDOW & DOOR

PRESERVING THE HERITAGE OF OUR BUNGALOWS AND SMALL CHURCHES.
SPECIAL SHAPE STORMS...*Our niche and our Specialty.*

ARCH ANGLE WINDOW & DOOR • 800-548-0214 • ARCHANGLEOHIO.COM

CLICK ON NO. 52

INTERIOR WINDOW SYSTEMS
NOISE REDUCTION • DRAFT & DIRT ELIMINATION • THERMAL CONTROL


- Up to 95% noise reduction
- Maximum Thermal Control
- 99% Elimination of Draft/Dirt Infiltration

Since 1960 Cityproof

10-11 43rd Avenue, Long Island City, NY 11101
Tel: (718) 786-1600 • e-mail: info@cityproof.com
www.cityproof.com

CLICK ON NO. 2390

Have The Best Of Both Worlds!



Save Your Historic Windows with High-Tech Interior Storm Windows

10 Minute Install / 10 Seconds In / 10 Seconds Out

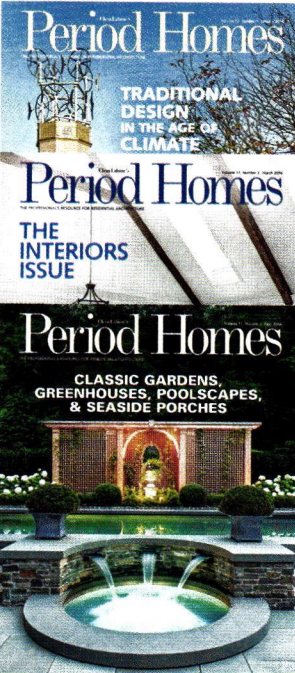
Innerglass® Window Systems, LLC
The Compression-Fit Advantage

stormwindows.com • 800.743.6207

CLICK ON NO. 909

To order free product literature from a company listed in this Buying Guide, go to period-homes.com/rs and click on the reader service number that appears at the end of its caption.

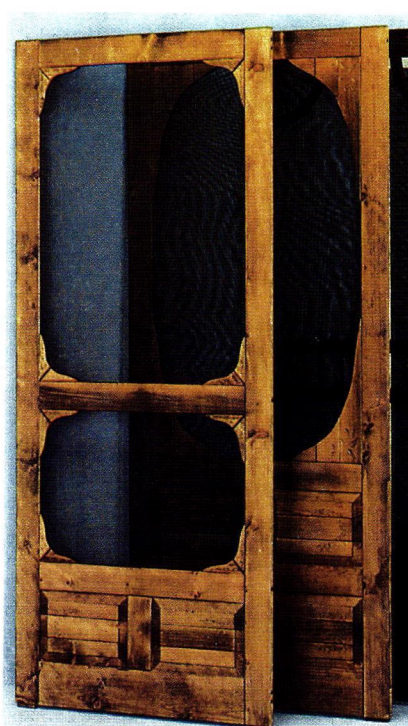
If you'd like to order a **gift subscription** for a colleague, just call 800-548-0148



Period Homes
TRADITIONAL DESIGN IN THE AGE OF CLIMATE

Period Homes
THE INTERIORS ISSUE

Period Homes
CLASSIC GARDENS, GREENHOUSES, POOLSCAPES, & SEASIDE PORCHES



Wood screen doors manufactured by **Coppa Woodworking** are available painted or stained.

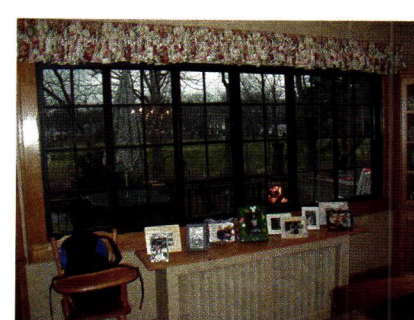
Coppa Woodworking
310-548-4142; Fax: 310-548-6740
www.coppawoodworking.com
San Pedro, CA 90731
Manufacturer of wood screen & storm doors: more than 300 styles; custom sizes, several wood types & multiple finishes; arch tops, dog doors, wood window screens & storm windows.
Click on No. 9600



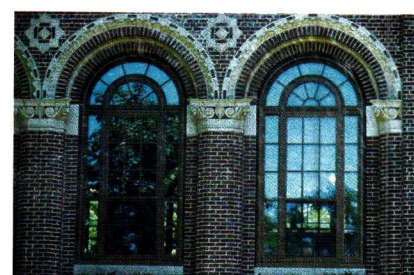
Indow's custom designed interior storm windows can be made to fit any size and configuration.

Indow
503-284-2260; Fax: 503-284-2261
www.indowwindows.com
Portland, OR 97227
Manufacturer of handcrafted acrylic interior storms: edged in Compression Tube that press into place without a track or magnetic system to preserve historic windows while creating comfort, energy efficiency, savings & noise reduction; laser-measured for out-of-square openings; for residential & commercial projects.
Click on No. 1746

Innerglass Window Systems
800-743-6207; Fax: 860-651-4789
www.stormwindows.com
Simsbury, CT 06070
Manufacturer of custom glass interior storm windows for energy conservation & soundproofing: maintains the integrity of historic windows; conforms to opening; do-it-yourself installation.
Click on No. 909



Interior glass storm windows from **Innerglass Window Systems** were used in this room.



Mon-Ray's aluminum and storm windows can be used in restoration and new construction projects.

Mon-Ray, Inc.
800-544-3646; Fax: 763-546-8977
www.monray.com
Hopkins, MN 55343
Manufacturer of DeVAC aluminum windows & Mon-Ray secondary windows: replacements for existing windows & interior or exterior storms for existing windows; operating & fixed; for historical, residential & commercial projects.
Click on No. 1288

METAL, SLATE, WOOD & TILE ROOFING

GAF

973-628-3000; Fax: 973-628-3865

www.gaf.com

Wayne, NJ 07470

Manufacturer of roofing: Timberline fiberglass asphalt shingle with wood look; TruSlate real slate roofing tiles; Designer Shingle collection with variety of styles replicating wood shakes, slate or tile.

Ludowici Roof Tile, Inc.

800-945-8453; Fax: 740-342-0025

www.ludowici.com

New Lexington, OH 43764

Manufacturer of clay roof tile: wide variety of standard shapes, fittings, sizes & colors; matte, gloss, weathered, fire-flashed, sanded & combed finishes; ceramic slate replicas & slate color matching; custom colors & shapes.



Reclaimed Roofs provided the matching slate and tile for repairs and additions for this project.

Reclaimed Roofs, Inc.

302-369-9187; Fax: 302-397-2742

www.reclaimedroofs.com

Greenville, DE 19807

Supplier of hard-to-find roofing slate & tile: reclaimed; clay & concrete tile; rigid mineral fiber shingles; matching services.

Roof Tile & Slate Co.

800-446-0220; 972-446-0005; Fax: 972-242-1923

www.claytile.com

Carrollton, TX 75006

Reseller of salvaged roof tile: slate & custom blending of clay tile & used roofing slate; Pennsylvania bluestone interior flooring; specialty trim for historic projects; paving.

Sheldon Slate Products Co. Inc.

207-997-3615; Fax: 207-997-2966

www.sheldonslate.com Monson, ME 04464

Manufacturer of slate products: benches, fountains, signage, roofing, floor tile, flagging, structural applications, monuments & kitchen counters & sinks; natural-stone planters & urns; color-matched facing stone, blocks & cladding.

Tile Roofs, Inc.

888-708-8453; Fax: 708-479-7865

www.tileroots.com

Frankfort, IL 60423

Custom manufacturer, importer & distributor of hand-finished roof tile & fittings: European clay, concrete & natural slate; new & salvaged; repairs & additions.



NIKO Contracting Co., Inc. installed this batten-seam and flat-lock copper roof.

NIKO Contracting Co., Inc.

412-687-1517; Fax: 412-687-7969

www.nikocontracting.com

Pittsburgh, PA 15213

Nationwide contractor, fabricator & installer of architectural sheet metal & roofing: slate, tile, metal & other roofing; ornamental ceilings, cresting, finials, cornices, cupolas, domes, steeples & snowguards.

Click on No. 8300

Quality Craftsmanship Nationwide Since 1974

ROOFING
Slate • Tile • Metal


ARCHITECTURAL
SHEET METAL WORK
and ORNAMENTATION

CUSTOM FABRICATION

HISTORIC
RESTORATION

PRESSED METAL
CEILING

NKO CONTRACTING CO.

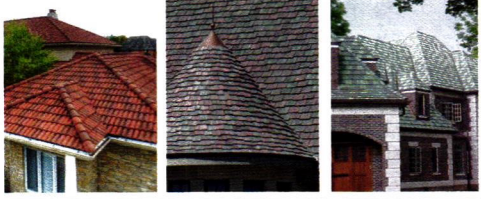


For information on custom fabrication and/or installation contact:
Phone (412) 687-1517
3434 Parkview Ave., Pittsburgh, PA 15213

CLICK ON NO. 8300

Hand-Crafted Roof Tiles

A TIME-HONORED TRADITION



OUR ROOFS ARE LIKE NO OTHER

- 9 STYLES & OVER 200 STANDARD COLORS: YOUR ROOF WILL BE UNIQUE.
- ADDS VALUE & RESALE VALUE TO YOUR HOME.
- LIFETIME TRANSFERABLE LIMITED WARRANTY.

VANDE HEY RALEIGH
Masters in the Artistry of Roof Tile

1565 Bohm Dr., Little Chute
1-800-236-8453
www.vrmtile.com

CLICK ON NO. 2840

Vande Hey Raleigh Architectural Roof Tile

800-236-8453; 920-766-0156; Fax: 920-766-0776

www.vrmtile.com

Little Chute, WI 54140

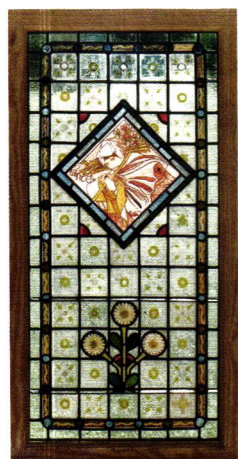
Manufacturer of roof tile: standard & custom colors & surfaces; 9 styles; lightweight line; cold-climate tile expertise; installation services; Lifetime Limited Warranty.

Click on No. 2840



Vande Hey Raleigh provided the custom gray slate blend tile for this home in Madison, Wisconsin.

SPECIALTY GLASS



This 1870 stained glass from **Architectural Accents** holds a beautiful hand painted winter guardian and it's one of four panels depicting the seasons.

Architectural Accents

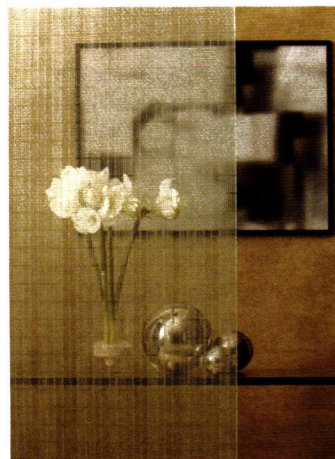
404-266-8700; Fax: 404-266-0074

www.architecturalaccents.com

Atlanta, GA 30305

National supplier of architectural antiques: mantels, doors, hardware, tile, columns, furnishings, mirrors, statuary, fountains, iron railings, gates, chandeliers, sconces & exterior lighting; antique heart pine flooring.

Click on No. 1202



The Robert A. M. Stern Collection from **Bendheim** includes four etched pattern glasses, including "Trattini," a grid of vertical lines of varying widths punctuated by horizontal bands.

Bendheim

800-221-7379; Fax: 212-431-3589

www.bendheim.com

New York, NY 10013

Importer & distributor of specialty glass: Restoration Glass®, handmade clear window glass; architectural, stained & mouth-blown glass.

Hollander Glass Central, Inc.

603-350-2063; Fax: 603-350-2366

www.hollanderglass.com

Bensenville, IL 60191

Wholesale distributor of large array of specialty glass: antique; more than 2,000 shades of colored, restoration, textured & patterned glass; translucent, blown & stained; prismatic glass for transoms.

Judson Studios

323-255-0131; Fax: 323-255-8529

www.judsonstudios.com

Los Angeles, CA 90042

Custom fabricator of stained glass: restoration & new pieces; mosaic, carved & etched glass, fine art & other specialty items.



Tory Hill Glass offers opaque stained glass and mirror mosaic designs like the one shown.

Tory Hill Glass & Restoration LLC

603-835-7979; Fax: 603-835-9979

www.toryhillglass.com

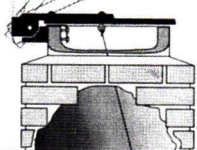
Alstead, NH 03602

Glass, 3 sq. ft. or under 5/16-in. sight lines, dual sealed. Supplying window fabricators with narrow sight-line insulated glass for historic jobs; specialty glass options.

ALL SEASON CONTROL COVER

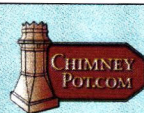
Chimney Top Fireplace Damper Systems

- Replaces all existing dampers
- All sizes and shapes—including round
- Saves on heating and air conditioning
- Seals out weather, pests and fallout
- Does not constrict flue opening



Call or email
BENSON ENERGY
(801) 273-1800
ControlCover@juno.com
visit us: controlcover.com

CLICK ON NO. 174



A LEADING SUPPLIER
OF NEW AND ANTIQUE
CHIMNEY POTS.

We represent manufacturers
from the US and the UK.

We ship nationwide
and to Canada.

www.CHIMNEYPOT.COM

724-345-3601

CLICK ON NO. 410

CHIMNEYS

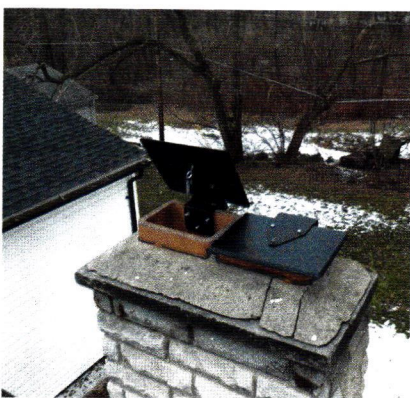


English West Country chimney pot from
Architectural Accents.

Architectural Accents

404-266-8700; Fax: 404-266-0074
www.architecturalaccents.com
Atlanta, GA 30305

National supplier of architectural antiques:
mantels, doors, hardware, tile, columns,
furnishings, mirrors, statuary, fountains, iron
railings, gates, chandeliers, sconces & exterior
lighting; antique heart pine flooring.
Click on No. 1202



Benson Energy's All Season Control Cover
for chimney flues can be installed in 30 minutes.

Benson Energy

801-273-1800; Fax: No fax
www.bensonenergy.com; www.controlcover.com
Holladay, UT 84124

Manufacturer of All Season Control Cover
chimney-top fireplace dampers: standard &
custom sizes; saves energy & prolongs chimney
life; seals out moisture, pests & biochemical
agents.

Click on No. 174



One of many antique chimney pots designs
supplied by **ChimneyPot.com**.

ChimneyPot.com

724-345-3601; Fax: 724-345-8243
www.chimneypot.com
Avella, PA 15312

Supplier of terra-cotta chimney pots & antique
cast-iron leader boxes: new, antique & custom
American chimney pot styles; more than 1,200
chimney pots in stock from around the world.
Click on No. 410



Copper-Inc.com provides custom-fit chimney
caps in hip or curved style.

Copper-Inc.com

888-499-1962; Fax: 888-499-1963
www.copper-inc.com
Galveston, TX 77551

Manufacturer & distributor of handcrafted
copper ridge caps, cupolas, finials, vents, gutter
systems, chimney caps & pots, weathervanes,
copper finishing products & more: custom;
copper & lead-coated copper; online catalog.

Click on No. 1312

*To order free product literature
from a company
listed in this Buying Guide, go to
period-homes.com/rs
and click on the reader service
number that appears
at the end of its caption.*

WEATHER VANES, FINIALS & CRESTING



This venetian style
polished copper finial
is available in three
sizes from **Annapolis
Weathervanes
and Cupolas**.

Annapolis Weathervanes and Cupolas

888-899-8493; Fax: 610-668-2472
www.weathervaneandcupola.com
Annapolis, MD 21401

Manufacturer of weathervanes, finials, banners
& cupolas: vinyl or wood; wildlife sculpture;
builder's discount.



Architectural Accents holds hundreds
of original building elements like this 19th
century cast iron spire from France.

Architectural Accents

404-266-8700; Fax: 404-266-0074
www.architecturalaccents.com
Atlanta, GA 30305

National supplier of architectural antiques:
mantels, doors, hardware, tile, columns,
furnishings, mirrors, statuary, fountains, iron
railings, gates, chandeliers, sconces & exterior
lighting; antique heart pine flooring.
Click on No. 1202

C&J Metal Products

800-500-8660; 562-634-3101; Fax: 562-634-8823
www.cjmetals.com
Paramount, CA 90723

Fabricator of custom architectural sheet-metal
products: dormers & dormer vents, finials,
spires, canopies, leader heads & chimney
tops; restoration & duplication of sheet-metal
elements.



Architectural sheet-metal roofing elements from
C&J Metal Products include cupolas, gutters
and leaders, dormer vents and finials.

Capital Cresting Co.

800-442-4766; Fax: 570-296-4766
www.capitalcrestings.com
Milford, PA 18337

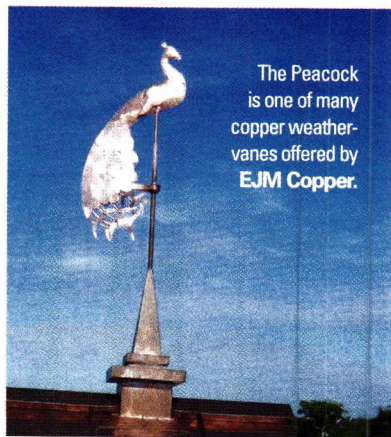
Manufacturer of a complete line of lightweight,
easy-to-install roof crestings & matching finials;
24 designs; snowguards, balconettes, flower
boxes & firewood boxes; custom grilles &
adornments.

Copper-Inc.com

888-499-1962; Fax: 888-499-1963
www.copper-inc.com
Galveston, TX 77551

Manufacturer & distributor of handcrafted copper
ridge caps, cupolas, finials, vents, gutter systems,
chimney caps & pots, weathervanes, copper
finishing products & more: custom; copper &
lead-coated copper; online catalog.

Click on No. 1312



The Peacock
is one of many
copper weather-
vanes offered by
EJM Copper.

EJM copper Inc.

407-447-0074; Fax: 407-447-0075
www.ejmcopper.com
Orlando, FL 32804

Manufacturer of custom architectural copper
products: chimney caps, range hoods, cupolas,
finials, spires, dormer vents, leader heads,
louvers, weathervanes, mailboxes, gutters &
more; online catalog.

Click on No. 588

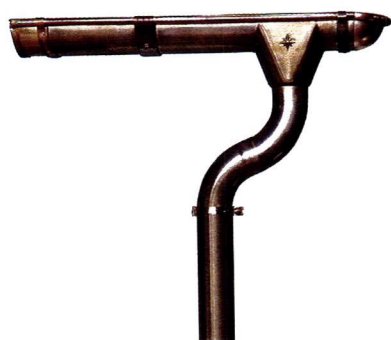
NIKO Contracting Co., Inc.

412-687-1517; Fax: 412-687-7969
www.nikocontracting.com
Pittsburgh, PA 15213

Nationwide contractor, fabricator & installer
of architectural sheet metal & roofing: slate,
tile, metal & other roofing; ornamental ceilings,
cresting, finials, cornices, cupolas, domes,
steeple & snowguards.

Click on No. 8300

GUTTERS & LEADER BOXES



B&B Sheetmetal supplies a copper gutter system that doesn't require soldering.

B&B Sheetmetal
718-433-2501; Fax: 718-433-2709
www.bbsheetmetal.com
Long Island City, NY 11101

Supplier of copper gutter systems & other roof specialties: leader heads, cupolas, snowguards, gutter hangers, metal roofs, end caps & seamless downspouts, elbows & miters; historical replicas; solid-copper half-round gutter systems

Baschnagel Brothers
718-767-1919; Fax: 718-767-5141
www.baschnagel.com
Whitestone, NY 11357

Manufacturer & installer of metal roofing: fabrication & installation of all types of ornamental copper gutters, leaders & more; metal repairs & restorations; slate & tile roofing; works with New York Landmarks Conservancy.



Berger Building Products' line of copper rain chains includes this link model.

Berger Building Products
800-523-8852; 215-355-1200; Fax: 215-355-7738
www.bergerbros.com
Feasterville, PA 19053

Manufacturer of historically correct gutters: half-round single-bead roll-formed lengths up to 6 in.; double-bead roll-formed up to 8 in.; 16-20-oz. copper; K & ogee configurations; flashing, trim & eave & leader boxes.

Classic Gutter Systems, LLC
269-665-2700; Fax: 269-665-1234
www.classicgutters.com
Kalamazoo, MI 49003

Manufacturer of 5-, 6- & 8-in. half-round gutters in heavy-duty copper, aluminum & galvalume: hidden nut-&-bolt adjustable hanger system; several styles of cast fascia & downspout brackets & other components; snowguards.

EJMcopper Inc.
407-447-0074; Fax: 407-447-0075
www.ejmcopper.com
Orlando, FL 32804

Manufacturer of custom architectural copper products: chimney caps, range hoods, cupolas, finials, spires, dormer vents, leader heads, louvers, weathervanes, mailboxes, gutters & more; online catalog.

Click on No. 588

Ornametals Manufacturing, LLC
256-255-0190; Fax: 256-255-0195
www.ornametals.com
Cullman, AL 35058

Manufacturer of decorative architectural products in copper & zinc: finials, weathervanes, radius gutters, waterspouts, medallions, mansards & roofing ornament.



This Radius K-Style copper gutter is fabricated and installed by **Rutland Gutter Supply**.

Rutland Gutter Supply
407-859-1119; Fax: 407-859-1123
www.rutlandguttersupply.com
Orlando, FL 32824

Supplier of architectural copper: continuous half-round gutters in 5, 6 & 7 in. sizes; cast-copper scroll hangers; finials, cupolas & chimney caps; architectural sheet metal & ornament.

When
contacting these
companies,
please mention
that you saw
them in
Period Homes
magazine.

EJMcopper, Inc

Quality Manufacturers of Architectural Copper Work



Chimney Caps
Dormer Vents
Leader Heads
Rain Chains
Weathervanes
Finials
Cupolas
Louvers

Toll Free: 407.447.0074

Fax: 407.447.0075



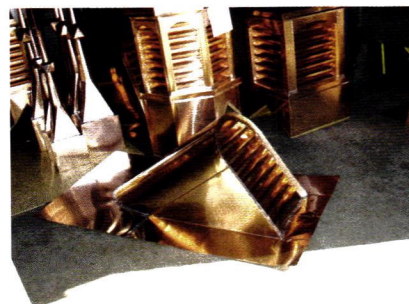
www.EJMcopper.com

CLICK ON NO. 588

CUPOLAS

Cape Cod Cupola Co.
508-994-2119; Fax: 508-997-2511
www.capecodcupola.com
North Dartmouth, MA 02747

Designer & manufacturer of cupolas in wood & PVC: window & louvered cupolas in square, hexagonal & octagonal models; copper weathervanes & finials.



These tombstone roof vents from **Copper-Inc.** are available in a variety of sizes and pitch.

Copper-Inc.com
888-499-1962; Fax: 888-499-1963
www.copper-inc.com
Galveston, TX 77551

Manufacturer & distributor of handcrafted copper ridge caps, cupolas, finials, vents, gutter systems, chimney caps & pots, weathervanes, copper finishing products & more: custom; copper & lead-coated copper; online catalog.

Click on No. 1312

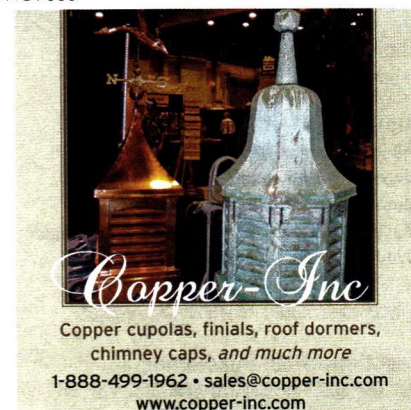


EJMcopper created this cupola following a design by the architecture firm Cronk Duch.

EJMcopper Inc.
407-447-0074; Fax: 407-447-0075
www.ejmcopper.com
Orlando, FL 32804

Manufacturer of custom architectural copper products: chimney caps, range hoods, cupolas, finials, spires, dormer vents, leader heads, louvers, weathervanes, mailboxes, gutters & more; online catalog.

Click on No. 588



Copper-Inc
Copper cupolas, finials, roof dormers, chimney caps, and much more
1-888-499-1962 • sales@copper-inc.com
www.copper-inc.com
CLICK ON NO. 1312

Heather & Little Limited
800-450-0659; Fax: 905-475-9764
www.heatherandlittle.com

Markham, ON, L3R 0H1 Canada

Custom fabricator & supplier of sheet-metal roofing & specialty architectural sheet metal: finials, cornices, capitals, cresting, canopies, shingles, siding, cupolas, steeples, domes & snowguards; reproductions; custom bronze windows.



NIKO Contracting crafted this 37-in.-tall copper cupola, available with or without a weathervane.

NIKO Contracting Co., Inc.
412-687-1517; Fax: 412-687-7969
www.nikocontracting.com
Pittsburgh, PA 15213

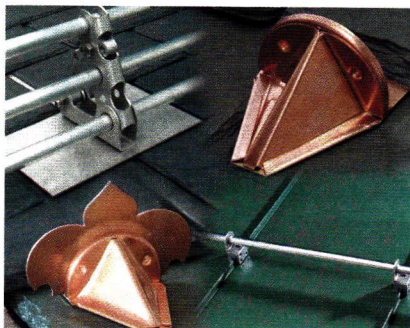
Nationwide contractor, fabricator & installer of architectural sheet metal & roofing: slate, tile, metal & other roofing; ornamental ceilings, cresting, finials, cornices, cupolas, domes, steeples & snowguards.

Click on No. 8300

Robinson Iron Corp.
800-824-2157; Fax: 256-329-8960
www.robinsoniron.com
Alexander City, AL 35010

Manufacturer of historical reproductions: classic Victorian lawn & garden ornament; bronze, aluminum & iron; planters, benches, fountains, columns, street lighting, mailboxes, cupolas & more.

SNOWGUARDS



Alpine SnowGuards manufactures snow-retention devices for every type of roof.

Alpine SnowGuards

888-766-4273; Fax: 888-766-9994
www.alpinesnowguards.com
Morrisville, VT 05661

Manufacturer & distributor of snowguards: pad-style, pipe-style, standing-seam & wire-loop systems; stainless steel, brass, aluminum & polycarbonate; free recommended layouts.

East Coast Roof Specialties

860-379-9072; Fax: 860-379-2046
www.icebrakes.com
Winsted, CT 06098

Manufacturer of IceBrakes cast-aluminum pad-style snowguards for metal roofs: 2 sizes; bare aluminum finish & dozens of powder-coated colors; product selection, layout assistance & installation advice; made in the U.S.

NIKO Contracting Co., Inc.

412-687-1517; Fax: 412-687-7969
www.nikocontracting.com
Pittsburgh, PA 15213

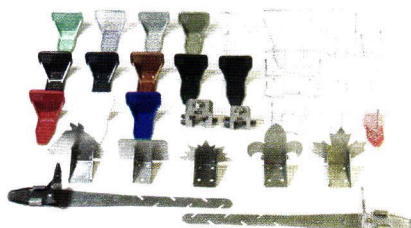
Nationwide contractor, fabricator & installer of architectural sheet metal & roofing: slate, tile, metal & other roofing; ornamental ceilings, cresting, finials, cornices, cupolas, domes, steeples & snowguards.

Click on No. 8300

Polar Blox, Inc.

800-298-4328; 814-629-7397; Fax: 814-629-9090
www.polarblox.com
Hollisopple, PA 15935

Manufacturer of UV-stabilized polycarbonate snowguards: adhesive- or screw-mount; clear or standard or custom colors.



SnoBlox offers a wide selection of snow

SnoBlox-SnoJax

800-766-5291; Fax: 717-697-2452
www.snoblox-snojax.com
Mechanicsburg, PA 17055

Inventor & supplier of clear polycarbonate snow blockers that prevent snow & ice avalanches on sloped roofing: authorized reseller of Snobar, ColorBar, Windbar, Ventsaver Surebond & MemoryClosure.

Click on No. 1493

TRA Snow and Sun, Inc.

801-756-8666; Fax: 801-756-7891
www.trasnowandsun.com
American Fork, UT 84003

Manufacturer of snowguards for asphalt-shingle, metal & slate roofs & more: snow fences & other custom designs; copper, paintlock, painted or aluminum; slate, tile, metal, wood & more.

SKYLIGHTS



This skylight was created for a residential project by **Advanced Building Products**.

Advanced Building Products, Inc.

800-882-4657; Fax: 717-661-7727
www.renaissanceconservatories.com
Leola, PA 17540

Advanced Building Products, Inc., a division of Renaissance Conservatories, manufactures and installs Hardwood Conservatories, Window Walls, Greenhouses, Custom Skylights, Roof Lanterns & Garden Windows.

CustomSkylights.com

800-882-4657; Fax: 717-661-7727
www.customskylights.com
Leola, PA 17540

Manufacturer of custom skylights and Roof Lanterns: Standard and Custom sizes, with or without side frames. Completely-Clad exteriors in Aluminum (180 Custom Colors), Copper, Lead-coated Copper, cresting & finials, and Stain-grade Hardwood interiors. Delivered completely finished to the site and crane-hoisted into place.

Glass House, LLC

800-222-3065; Fax: 860-974-1173
www.glasshouseusa.com
Pomfret Center, CT 06259

Fabricator of traditional conservatories, greenhouses, sunrooms, pool enclosures, roof lanterns, specialty skylights & glass roof systems: mahogany or aluminum frame & copper; custom fabrication.



This mahogany frame hip corner skylight glass roof system with state-of-the-art glazing was designed, fabricated and installed by **Glass House, LLC**.

Hyland Studio, The

408-748-1806; Fax: 408-748-0160
www.hylandstudio.com
Santa Clara, CA 95050

Custom designer & fabricator of stained-, leaded- & etched-glass domes, skylights, windows, doors & cabinets: all architectural styles.

New England Skylights

774-278-1098; Fax: 617-972-5052
www.newenglandskylights.com
Watertown, MA 02472

Custom designer & fabricator of traditional skylights for flat & sloped roofs: flat-panel, lean-to or single-slope; double & wire-reinforced glazing; copper, lead-coated copper, terne-stainless & other specialty metal framing.

Solar Innovations, Inc.

570-915-1500; Fax: 570-915-6083
www.solarinnovations.com
Pine Grove, PA 17963

Designer, fabricator & installer of aluminum & wood glazed structures: skylights, sunrooms, greenhouses, conservatories & pool & spa enclosures; folding, tilting, sliding & stacking doors, walls, windows & screens; walkways, canopies, gutters, finials & more; HIC # PA051151.

To order free product literature from a company listed in this Buying Guide, go to period-homes.com/rs and click on the reader service number that appears at the end of its caption.

Period Homes
THE PROFESSIONAL'S RESOURCE FOR RESIDENTIAL ARCHITECTURE

BUYING GUIDES PROJECTS PROFILES FEATURES PRODUCT REPORTS PALLADIO AWARDS THE MAGAZINE



Subscribe Now

New New Construction



Landscape Architect Gregory Lombardi's "Country Gentleman's Estate"

Buying Guide Spotlight



Glass House, LLC

Fabricator of traditional conservatories, greenhouses

Visit the newly updated
Period-Homes.com
today for web exclusives like blogs by industry leaders & experts.



SnoBlox-Snojax.com

671 Willow Street
 Lemoyne, PA 17043

Ph: (800) 766-5291 Ph: (717) 737-4398

Fax: (717) 697-2452

www.snoblox.com www.snojax.com

FOR FREE
 SNOW GUARD
 SPACING LAYOUTS
 VISIT SPACINGTOOL.COM

Stop Snow Slides on Metal Roofs



Without Snow Guards



With Snow Guards

Same Day Shipping On Most Items!

Snojax II

5.22" W x 3.25" H

The **first** polycarbonate, adhesive mounted snow guard, invented in 1985. Features an interchangeable mounting base. Adhesive tested: 700 lbs. Screw tested: 3750 lbs.

AS LOW AS
\$3.50

Snojax I

5.22" W x 3.25" H

The **first** patented polycarbonate snow guard introduced in 1976 for mechanically fastened applications only. Screw tested: 1800 lbs.

AS LOW AS
\$2.50



11 Stock Deuce Colors

Ace

Face: 5" W x 3" H
 Base: 3" W x 5" L

Waffled base increases bonding power. "V" shape fits most panels and does not trap water. Adhesive tested: 1449 lbs. Screw tested: 4849 lbs.

AS LOW AS
\$2.50

Deuce

Face: 3" W x 2.5" H
 Base: 1.5" W x 4" L

Fits most common 36" panels with 9" flats. Sits in flat area between minor ribs. No rib straddling. Adhesive tested: 1379 lbs. Screw tested: 3456 lbs.

AS LOW AS
\$1.75

SnowBreaker

Safely break up sliding snow and ice! Cutting edge design reduces the dangers of sliding snow and ice by breaking it up into smaller pieces. Available with "Peel & Stick" 3M tape option.

Icelax II

5" W x 3" H

Based on the proven Snojax II design. Features an interchangeable mounting base. Embossed logo enhances bonding power. Adhesive tested: 1561 lbs. Screw tested: 6388 lbs.

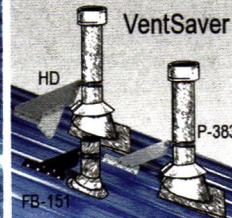
AS LOW AS
\$2.95

Icelax I

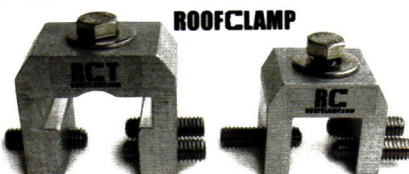
3" W x 2.5" H

Based on the proven Snojax II design. Interchangeable mounting base. Fits most panel brands. Never undersold! Adhesive tested: 500 lbs. Screw tested: 4200 lbs.

AS LOW AS
\$1.50



This ingenious product protects vents, chimneys and masts from snow and ice avalanche! Made from non-corrosive, powder coated, aircraft grade aluminum and stainless steel cable or strap.



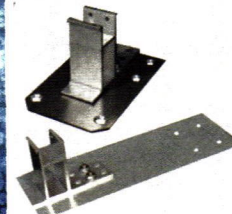
Attach Accessories To Metal Roofs

Manufactured by Action Manufacturing, LLC Exclusively Marketed by SnoBlox-Snojax and Riddell & Co. Inc.

Metal SnowCatchers



Maple Leaf, Sun Burst, Standard, Fleur-de-lis, and Mustang Shapes. Stainless Steel, 82 durable powder coat colors.



New "Slate", "Shingle" and "Membrane" mounts for SnoBar, ColorBar, and ColorRail systems. Available in mill and powder-coated finishes to match your roof.

Marketed by SnoBlox-Snojax
 As manufactured by Action Manufacturing LLC

SnoBar

Available in Powder Coated and Mill Galvanized or Stainless Steel finishes. No penetrations! Attach year round! Ice Stoppers prevent snow and ice from sliding under the bar.

SnoBar By Action Manufacturing LLC. Marketed by IceBlox, Inc.

ColorBar

Features a Kynar™ painted "No Paint - No Wait" slide in, 2 inch metal strip. No seam penetrations! Attach year round! IceStoppers Prevent snow and ice from sliding under the bar.

Marketed by SnoBlox-Snojax
 As manufactured by Action Manufacturing LLC

Double Bar Mount

Our new "Double-Bar" mount can be used with SnoBar or ColorBar. Available in mill or powder-coated finishes to match your roof. Mounts with our Patented RoofClamps.

Marketed by SnoBlox-Snojax
 As manufactured by Action Manufacturing LLC

*Prices shown reflect discount. Visit www.SNOBLOX-SNOJAX.com to view snow guards price breaks.

Architectural Antiques Yellow Pages

YOUR COMPREHENSIVE GUIDE TO COMPANIES SPECIALIZING IN HARD TO FIND ARCHITECTURAL ANTIQUES

American Historic Hardware 73 Elm Street, Cooperstown, NY 13326 607-547-1900 www.ahhardware.com askbill@ahhardware.com	Specializes in original builder's hardware from the great American manufacturers of the 19th and 20th centuries. See our extensive offerings online. Great old houses deserve great old hardware.	Carlson's Barnwood Co. 8066 N. 1200 Avenue Cambridge, IL 61238 309-522-5550 Fax: 309-522-5123 www.carlsonsbarnwood.com info@carlsonsbarnwood.com	Reclaimed barnwood, beams, flooring & architectural salvage supplied by 20-year family business. Excellent service & prices.
Architectural Accents 2711 Piedmont Road, NE, Atlanta, GA 30305 404-266-8700 Fax: 404-266-0074 www.architecturalaccents.com info@architecturalaccents.com	Specializes in 17th, 18th, and 19th century architectural antiques and reproductions. In their 30,000 sq. ft. showroom, you will find the most comprehensive selection of European and American designs plus a team of experts to assist you with remodeling, restoration and installation.	Chestnut Specialists, Inc. 400 Harwinton Avenue P.O. Box 304, Plymouth, CT 06782 860-283-4209 www.chestnutspec.com chestnutspec@aol.com	Supplier of re-milled flooring from antique barn lumber: authentic antique planks, hewn beams, weathered siding, original flooring, antique heavy timber & salvaged logs for milling.
Architectural Antiques (MN) 1330 Quincy Street, NE Minneapolis, MN 55413 612-332-8344 Fax: 612-332-8967 www.archantiques.com sales@archantiques.com	A changing inventory of antique architectural elements including lighting, hardware plumbing, stained glass, doors, mantels, stone, iron & truly unique, ecclesiastical artifacts plus hip & functional stuff that gives new life to any of your environments.	ChimneyPot.com 1915 Brush Run Road, Avella, PA 15312 724-345-3601 Fax: 724-345-8243 www.chimneypot.com info@chimneypot.com	Our antique chimney pots are truly antiques. The finish & patina of each chimney pot is unique. It gives a softer, more subtle look to a property.
Architectural Antiques (PA) 1211 Croton Avenue New Castle, PA 16101 724-656-8488 Fax: 724-656-8488 www.antiquemantels.com dave@antiquemantels.com	Specializing in the best quality architectural antique products for over 30 years. Full jamb, custom built entrances using antique beveled glass; retrofitted fireplace mantels; & more. All restored & ready to install. Design services available.	Eron Johnson Antiques 389 South Lipan Street, Denver, CO 80223 303-777-8700 Fax: 303-777-8787 www.eronjohnsonantiques.com info@eronjohnsonantiques.com	Over 8,000 pieces of antique & vintage architectural salvage: doors, columns, stained glass, ironwork, garden ornament, furniture & period lighting from the 17th century to mid-century modern in our 30,000-sq-ft. showroom. Entire inventory online.
Architectural Antiques of Indianapolis 5000 W.96th St., Indianapolis, IN 46268 317-873-2727 Fax: 317-873-2156 www.antiquearchitectural.com copleydr@aol.com	Over 35 years offering Indiana's finest selection of quality American architectural antiques and furnishings. Specializing in lighting, hardware, back bars, doors, mantels stained glass, carved wood, decorative garden items and the unusual. Mon-Sat 10-5 or by appointment.	Foster Wood Products PO Box 771, Shiloh, GA 31826 800-682-9418 Fax: 706-846-3487 www.fosterwood.com fosterwood@windstream.net	Specializing in Antique reclaimed flooring & paneling; selected new heart pine flooring; hand-hewn antique timbers; railroad type coffee tables & wine carts; handcrafted farm tables.
Auburn Tile Inc. 545 W. Main, Box 10, Ontario, CA 91762 909-984-2841 Fax: 909-984-1517 www.auburntile.com sales@auburntile.com	Do you need a replacement Monier 90 Degree Radius Rakes, Monier Big Barrel Mission Trim, Staco, Rhotile or Suncrete roof tile? We have them! Give us a call at Auburn Tile.	Gavin Historical Bricks, Inc. 2050 Glendale Road, Iowa City, IA 52245 319-354-5251 Fax: 319-688-3086 www.historicalbricks.com	info@historicalbricks.com Supplier of authentic antique brick pavers, granite cobblestones, clinker & common brick: custom matching; large quantities; special shapes; hand-molded & face brick; nationwide shipping.
Aurora Mills Architectural Salvage Inc. 14971 First Street, NE, Aurora, OR 97002 503-678-6083 www.auroramills.com salvage@auroramills.com	Since 1999 Aurora Mills has scoured the countryside searching for the best in antique vintage & reclaimed architectural gems. Aurora Mills offers everything from the mundane to the spectacular. New Location: 70 S.E. Salmon St., Portland, OR 97214 503-837-2125.	Goodwin Company 106 SW 109th Place, Micanopy, FL 32667 800-336-3118 Fax: 352-466-0608 www.heartpine.com goodwin@heartpine.com	The richest, most beautiful antique wood in the world... in limited supply. Compare Goodwin's River-Recovered® and reclaimed heart pine and heart cypress to any other finished wood in the world and you will clearly see why Goodwin is the industry gold standard. Supplying the finest antique wood flooring since 1976.
B & P Lamp Supply, Inc. 843 Old Morrison Hwy. Mc Minnville, TN 37110 800-822-3450 Fax: 931-473-3014 www.antiquelampsupply.com laura@bplampsupply.com	B & P Lamp Supply Inc. has been serving the antique and lighting trade since 1952. We stock over 7,500 parts ready to ship coast to coast. Widely known for outstanding customer service and quality products.	Metropolitan Artifacts 4783 Peachtree Rd., Atlanta, GA 30341 770-986-0007 Fax: 770-457-8670 www.metropolitanartifacts.com metartinc@aol.com	Specializing in French Architecturals. Over 300 entry doors, largest selection of door hardware any where, driveway gates, garden gates, balconies, interior and exterior lighting, garden statuary, benches.; 28,000-sq.ft. showroom; since 1980.
BABA Antique Wooden Flooring Co. 4380 Alston Chapel Road Pittsboro, NC 27312 800-542-4812 Fax: 919-545-9214 www.baba.com babawoodfloors@gmail.com	The BABA Mill, located on a farm in Pittsboro, NC, provides the highest quality antique wooden flooring throughout the country. Best known for our original surface Fumed Antique Oak, Fumed Antique Chestnut, and Wide Board Antique Heart Pine. We provide matching stair treads, risers, casework, and proprietary, as well as custom finishes. Installation and/or on site finishing can be handled by us, or we will work closely with your own craftspeople. Samples are available upon request.	Old Wood Workshop, LLC 193 Hampton Road Pomfret Center, CT 06259 860-655-5259 www.oldwoodworkshop.com info@oldwoodworkshop.com	Old Wood Workshop specializes in antique, original-surface, 18th & early 19th century flooring and wall board. We provide quality reclaimed antique wood for homeowners, building contractors, designers and architects. We also offer architectural antiques such as antique iron hardware, antique stone and other unique items.
The Bath Works, Inc. 2646 Leah Circle, Columbia, TN 38401 931-381-5711 Fax: 931-381-5712 www.thebathworks.com info@thebathworks.com	Honoring traditional craftsmanship, restoring vintage tubs to their former glory. Also offering hand made, hand finished vintage modern replica of circa 1880 bathtub designs. All our castings are made in the USA.	Reclaimed Wisconsin 8190 Nebraska Avenue, Cashton, WI 54619 608-633-4002 www.reclaimedwisconsin.com thewoodbutcher1@yahoo.com	From a single board to an entire barn frame, Reclaimed Wisconsin will get you the right materials... the first time! Or call us with your ideas and have our Amish craftsman build it for you!
Bathroom Machineries 495 Main Street, Murphys, CA 95247 209-728-2031 Fax: 209-728-2320 www.deabath.com info@deabath.com	Specializing in restored antique plumbing fixtures ranging from pre-1900 to the 1950's. Unlike a traditional salvage yard, our products are sold fully restored and ready to install.	Restoration Resources Inc. 1946 Washington Street Boston, MA 02118 617-542-3033 Fax: 617-542-3034 www.restorationresources.com info@restorationresources.com	New England's primary source of antique architectural salvage, unique furnishings & vintage artifacts carefully handpicked & displayed in a well organized 7000-sq. ft. retail showroom & warehouse located in Boston's historical south end.
The Brass Knob Architectural Antiques 2311 18th Street NW Washington, DC 20009 202-332-3370 Fax: 202-332-5594 www.thebrassknob.com rlock@thebrassknob.com	Supplier of eclectic selection of authentic antique hardware, lighting, mantels, stained glass & many decorative items dating from 1850-1940: for residential & commercial restoration & new construction.	Seekircher Steel Window Corp. 423 Central Avenue Peekskill, NY 10566 914-734-8004 Fax: 914-734-8009 www.seekirchersteelwindow.com seekirchersteelwindow@gmail.com	Repair and restoration of historic steel casement windows and doors, performed both on and off site for residential and commercial properties. Work successfully completed in over 30 states. Large inventory of vintage steel casement windows and French doors for sale. Family owned and operated since 1977.
Brosamer's Bells 212 Irwin Street, Brooklyn, MI 49230 517-592-9030 Fax: 517-592-4511 www.brosamersbells.com usedbells@frontier.com	Supplier of pre-owned bells: more than 40,000 lbs. in stock; restoration of cast-bronze bells; yard, fire engine, railroad, church & tower bells; many styles; all sizes.	Southern Accents Architectural Antiques 308 2nd Avenue SE, Cullman, AL 35055 877-737-0554 Fax: 256-737-0375 www.SA1969.com info@sa1969.com	Southern Accents houses one of the largest collections of architectural antiques and salvage items in the Southeast. Items include salvaged and reclaimed wood, antique doors, mantels, crystal chandeliers, clawfoot tubs, ironwork, door hardware and more.
The Building Reclaimers 900 Cork Road, Walnutport, PA 18088 610-762-8837 www.thebuildingreclaimers.com cdhess710@gmail.com	A small full service building reclamation company that deals in 18th and 19th century barns, log & timber frame houses, original, reclaimed, remilled, resawn, attic lumber, flooring beams, foundation stone, throughout eastern Pennsylvania. Follow us on Facebook.	Sylvan Brandt 756 Rothsville Road, Lititz, PA 17543 717-626-4520 Fax: 717-626-5867 www.sylvanbrandt.com genna@sylvanbrandt.com	Dedicated to perfecting the art of beautiful, high-quality antique & resawn wood flooring for three generations. Also supplies antique beams, barn siding & house parts. Call or visit today.
C. Neri Antiques 313 South Street, Philadelphia, PA 19147 215-923-6669 Fax: 215-922-4189 www.neriantiquelighting.com neriantiquelites@aol.com	The largest American antique lighting dealer in the country. Chose from hundreds of unique lighting options for your home or office.	Tile Roofs, Inc. 9505 Corsair Road, Frankfort, IL 60423 888-708-8453 Fax: 708-479-7865 www.tileroots.com tileroots@aol.com	Supplier of new & salvaged concrete tiles, clay tiles & fittings for restoration, repair & new construction. Custom manufacturing of clay & concrete tiles to match existing. Importer of tiles from Europe.

Architectural Antiques Yellow Pages

YOUR COMPREHENSIVE GUIDE TO COMPANIES SPECIALIZING IN HARD TO FIND ARCHITECTURAL ANTIQUES

Art Glass/Stained Glass, Antique

Architectural Accents
Architectural Antiques (MN)
Architectural Antiques (PA)
Architectural Antiques of Indianapolis
Aurora Mills Architectural Salvage Inc.
B and P Lamp Supply Inc.
The Brass Knob Architectural Antiques
Eron Johnson Antiques
Restoration Resources
Southern Accents Architectural Antiques

Back Bars, Antique

Architectural Antiques (MN)
Architectural Antiques of Indianapolis
Aurora Mills Architectural Salvage Inc.

Barn Siding, Antique

Aurora Mills Architectural Salvage Inc.
The Building Reclaimers
Carlson's Barnwood Co.
Chestnut Specialists, Inc.
Foster Wood Product
Reclaimed Wisconsin
Southern Accents Architectural Antiques
Sylvan Brandt LLC

Barns, Antique & Salvaged

Aurora Mills Architectural Salvage Inc.
The Building Reclaimers
Carlson's Barnwood Co.
Chestnut Specialists, Inc.
Reclaimed Wisconsin
Southern Accents Architectural Antiques

Bars, Antique

Architectural Antiques (MN)
Architectural Antiques (PA)
Architectural Antiques of Indianapolis

Bathtubs, Antique

Architectural Accents
Architectural Antiques (MN)
Architectural Antiques of Indianapolis
Aurora Mills Architectural Salvage Inc.
The Bath Works
Bathroom Machineries
Southern Accents Architectural Antiques

Bells, Antique

Architectural Antiques (MN)
Brosamer's Bells
Eron Johnson Antiques

Brick, Salvaged

Carlson's Barnwood Co.
Gavin Historical Bricks, Inc.
Southern Accents Architectural Antiques

Building Materials, Salvaged

Architectural Accents
Architectural Antiques (MN)
Architectural Antiques of Indianapolis
Aurora Mills Architectural Salvage Inc.
The Building Reclaimers
Carlson's Barnwood Co.
Chestnut Specialists, Inc.
Eron Johnson Antiques
Foster Wood Products
Gavin Historical Bricks, Inc.
Seekircher Steel Window Corp.
Southern Accents Architectural Antiques
Sylvan Brandt LLC
Tile Roofs, Inc.

Chimney Pots, Antique

Architectural Accents
ChimneyPot.com

Columns & Capitals, Antique Original

Architectural Accents
Architectural Antiques (MN)
Architectural Antiques (PA)
Architectural Antiques of Indianapolis
Aurora Mills Architectural Salvage Inc.
The Brass Knob Architectural Antiques
Eron Johnson Antiques
Restoration Resources
Southern Accents Architectural Antiques

Doors, Antique

American Historic Hardware
Architectural Accents
Architectural Antiques (MN)
Architectural Antiques (PA)
Architectural Antiques of Indianapolis
Eron Johnson Antiques
Metropolitan Artifacts
Reclaimed Wisconsin
Restoration Resources
Seekircher Steel Window Corp.
Southern Accents Architectural Antiques
Sylvan Brandt LLC

Elevator Cabs, Antique Original

Architectural Antiques (MN)

Fans, Antique

Aurora Mills Architectural Salvage Inc.
Southern Accents Architectural Antiques

Faucets, Antique

Architectural Accents
Architectural Antiques (MN)
Architectural Antiques of Indianapolis
Aurora Mills Architectural Salvage Inc.
Bathroom Machineries
Southern Accents Architectural Antiques

Fencing, Antique Original

Architectural Antiques (MN)
Architectural Antiques of Indianapolis
Eron Johnson Antiques
Metropolitan Artifacts
Restoration Resources
Southern Accents Architectural Antiques

Flooring, Salvaged

BABA Antique Wooden Flooring Co.
The Building Reclaimers
Carlson's Barnwood Co.
Chestnut Specialists, Inc.
Foster Wood Products
Goodwin Company
Old Wood Workshop, LLC.
Reclaimed Wisconsin
Southern Accents Architectural Antiques
Sylvan Brandt LLC

Garden & Landscape Specialties, Antique

Architectural Accents
Architectural Antiques (MN)
Architectural Antiques (PA)
Architectural Antiques of Indianapolis
The Brass Knob Architectural Antiques
Eron Johnson Antiques
Metropolitan Artifacts
Restoration Resources
Southern Accents Architectural Antiques

Gates, Antique Original

Architectural Accents
Architectural Antiques (MN)
Architectural Antiques (PA)
Architectural Antiques of Indianapolis
The Brass Knob Architectural Antiques
Eron Johnson Antiques
Metropolitan Artifacts
Restoration Resources
Southern Accents Architectural Antiques

Glass, Antique Original

Architectural Accents
Architectural Antiques (MN)
Architectural Antiques of Indianapolis
Aurora Mills Architectural Salvage Inc.
B & P Lamp Supply, Inc.
The Brass Knob Architectural Antiques
Eron Johnson Antiques
Seekircher Steel Window Corp.

Green-Building Products

Architectural Antiques (MN)
Aurora Mills Architectural Salvage Inc.
Foster Wood Products
Gavin Historical Brick
Goodwin Company
Seekircher Steel Window Corp.
Tile Roofs, Inc.

Hardware, Antique Original

American Historic Hardware
Architectural Accents
Architectural Antiques (MN)
Architectural Antiques (PA)
Architectural Antiques of Indianapolis
Aurora Mills Architectural Salvage Inc.
B & P Lamp Supply, Inc.
The Brass Knob Architectural Antiques
Brosamer's Bells
Metropolitan Artifacts
Old Wood Workshop, LLC
Restoration Resources
Southern Accents Architectural Antiques
Sylvan Brandt LLC

Lighting Fixtures, Antique Original

Architectural Accents
Architectural Antiques (MN)
Architectural Antiques (PA)
Architectural Antiques of Indianapolis
Aurora Mills Architectural Salvage Inc.
B & P Lamp Supply, Inc.
Bathroom Machineries
The Brass Knob Architectural Antiques
C. Neri Antiques
Eron Johnson Antiques
Metropolitan Artifacts
Restoration Resources
Southern Accents Architectural Antiques

Mantels, Antique Original

Architectural Accents
Architectural Antiques (MN)
Architectural Antiques (PA)
Architectural Antiques of Indianapolis
Aurora Mills Architectural Salvage Inc.
The Brass Knob Architectural Antiques
Eron Johnson Antiques
Metropolitan Artifacts
Restoration Resources
Southern Accents Architectural Antiques
Sylvan Brandt LLC

Plumbing Parts, Antique Original

Architectural Antiques (MN)
Architectural Antiques (PA)
Architectural Antiques of Indianapolis
Aurora Mills Architectural Salvage Inc.
The Bath Works
Bathroom Machineries
Southern Accents Architectural Antiques

Radiators, Antique

Aurora Mills Architectural Salvage Inc.
Southern Accents Architectural Antiques
Sylvan Brandt LLC

Roof Slate, Salvaged

The Building Reclaimers
Tile Roofs, Inc.

Roof Tile, Salvaged

Auburn Tile Inc.
Tile Roofs, Inc.

Salvaged Buildings

The Building Reclaimers
Carlson's Barnwood Co.
Reclaimed Wisconsin

Sinks, Antique Original

Architectural Accents
Architectural Antiques (MN)
Architectural Antiques (PA)
Aurora Mills Architectural Salvage Inc.
Architectural Antiques of Indianapolis
Bathroom Machineries
Restoration Resources
Southern Accents Architectural Antiques

Stone, Salvaged

Architectural Accents
Architectural Antiques (MN)
The Building Reclaimers
Gavin Historical Bricks, Inc.
Old Wood Workshop, LLC
Southern Accents Architectural Antiques

Stoves, Antique Original

American Historic Hardware
Restoration Resource

Timber Frames, Antique & Salvaged

Aurora Mills Architectural Salvage Inc.
The Building Reclaimers
Carlson's Barnwood Co.
Chestnut Specialists, Inc.
Foster Wood Products
Reclaimed Wisconsin
Southern Accents Architectural Antiques

Timbers, Antique & Salvaged

The Building Reclaimers
Carlson's Barnwood Co.
Foster Wood Products
Goodwin Company
Reclaimed Wisconsin
Southern Accents Architectural Antiques
Sylvan Brandt LLC

Windows, Antique

Architectural Accents
Architectural Antiques (MN)
Architectural Antiques of Indianapolis
Carlson's Barnwood Co.
Eron Johnson Antiques
Restoration Resources
Seekircher Steel Window Corp.
Southern Accents Architectural Antiques
Sylvan Brandt LLC

Wood Boards, Antique & Salvaged

Architectural Antiques of Indianapolis
Aurora Mills Architectural Salvage Inc.
The Building Reclaimers
Carlson's Barnwood Co.
Chestnut Specialists, Inc.
Foster Wood Products
Goodwin Company
Old Wood Workshop, LLC
Reclaimed Wisconsin
Southern Accents Architectural Antiques
Sylvan Brandt LLC

Wood Flooring, Antique

Aurora Mills Architectural Salvage Inc.
BABA Antique Wooden Flooring Co.
The Building Reclaimers
Carlson's Barnwood Co.
Chestnut Specialists, Inc.
Foster Wood Products
Goodwin Company
Old Wood Workshop, LLC
Reclaimed Wisconsin
Southern Accents Architectural Antiques
Sylvan Brandt LLC

Architectural Antiques Yellow Pages

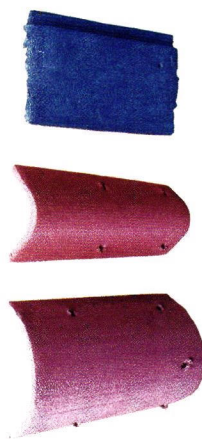
YOUR COMPREHENSIVE GUIDE TO COMPANIES SPECIALIZING IN HARD TO FIND ARCHITECTURAL ANTIQUES



This casement window is one of thousands repaired annually by **Seekircher Steel Window Corp.**



Architectural Antiques of Indianapolis offers an extensive collection of antique light fixtures, mantels, hardware, stained glass, doors and interior elements.



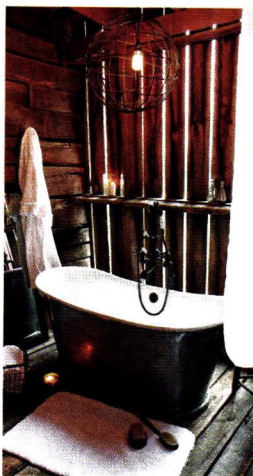
Auburn Tile specializes in four lines of tile in a variety of colors finished in either a brushed or smooth finish.



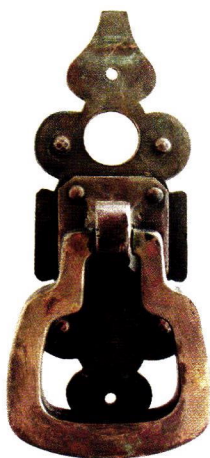
Lighting fixtures, furniture, columns, antique doors are among the many items offered by **Southern Accents Architectural Antiques.**



Bathroom Machineries has an extensive line of restored faucets and valves.



The Bath Works offers several vintage bathtub designs including this St. Bordeaux with an aged patina.



This Mission style door knocker fabricated in hammered bronze is available from **Aurora Mills Architectural Salvage.**



Antique random-width wide-plank oak from **Chestnut Specialists** can be used to create custom flooring.



Architectural Antiques (PA) specializes in restoring architectural salvage to meet the needs of clients.



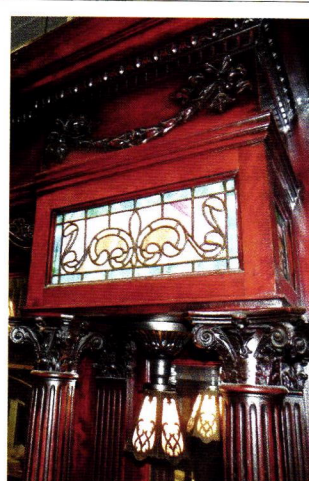
From a 19th century Denver area mansion, this pair of antique finials originally flanked a grand staircase outdoors. Each features a spiral finial above a large, flattened ball of openwork C-scrolls and is supported on four legs; its available from **Eron Johnson Antiques.**



This lighting fixture is one of the many available from **C. Neri Antiques.**



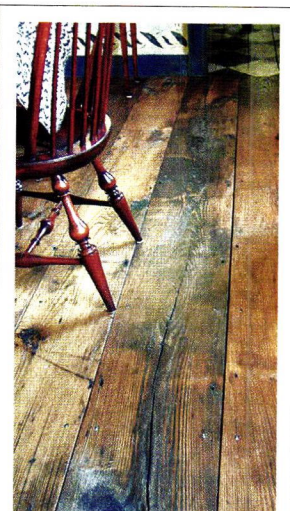
The Brass Knob Architectural Antiques has an extensive collection of authentic antiques dating from 1850-1940.



This Ornate 12' Soda Fountain Back Bar with stained glass and marble top is one of many unique items available from **Architectural Antiques of Indianapolis.**



This entry door is one of the more than 300 available from **Metropolitan Artifacts** in their 28,000-sq.ft. showroom.



This antique wood flooring by **Old Wood Workshop** is just one of many salvaged & antique flooring available.

Architectural Antiques Yellow Pages

YOUR COMPREHENSIVE GUIDE TO COMPANIES SPECIALIZING IN HARD TO FIND ARCHITECTURAL ANTIQUES



Architectural Antiques (MN) offers a changing inventory of antique architectural elements including lighting, hardware plumbing, stained glass, doors, mantles, stone, iron and more.



Available at **B&P Lamp Supply**, these early 20th century Schoolhouse Opal Pendant Shades have a wonderful nostalgic appeal and their versatile designs are currently popular in residential and commercial applications.



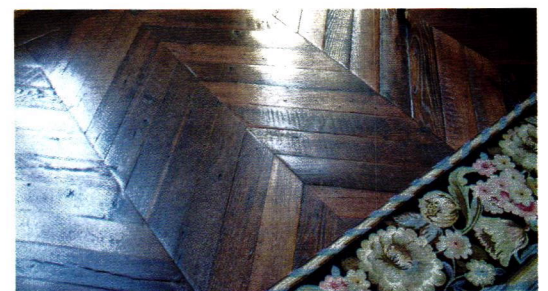
This salvaged clay Mission tile was supplied by **Tile Roofs**.



American Historic Hardware offers a wide selection of original hardware, all cleaned and researched, such as this door lock set.



Salvaged flooring is one of the many items provided by **The Building Reclaimers**.



This residence features Fumed Antique Oak flooring set in a chevron pattern by **BABA Antique Wooden Flooring Company**.



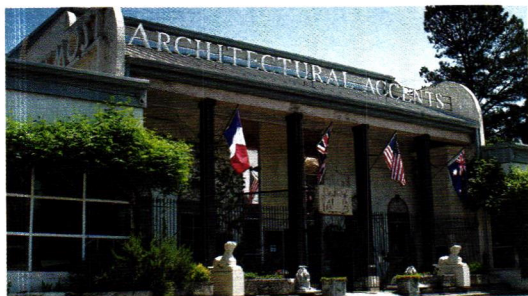
Timber frame structures are one of the many specialties of **Reclaimed Wisconsin**.



ChimneyPot.com stocks more than 1,200 chimney pots in a wide variety of styles, sizes and finishes.



Carlson's Barnwood supplied the siding for this house in Colorado.



Architectural Accents' 30,000 sq. ft. showroom holds a comprehensive selection of 17th 18th and 19th century architectural antiques and reproductions.



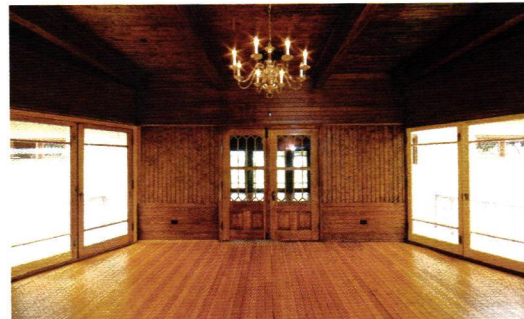
Brosamer's Bells offers a wide selection of restored historic bells.



Sheldon Slate Products, Inc. produced the roofing tiles on a custom made to order basis for this project.



Restoration Resources' 7,000-sq.ft. showroom displays an extensive collection of antique architectural salvage and vintage artifacts.



The antique reclaimed wood in this room was supplied by **Goodwin Company**.



Gavin Historical Bricks supplied its reclaimed Old English Cobblestones for this driveway in Montecito, CA.

Historic Tiverton Estate Reborn

BY HARRISON SUTPHIN OF SUTPHIN ARCHITECTURE

Dr. Frederick Owsley, originally of Chicago, had already established Tiverton in Greenwood, Virginia, estate as a large dairy operation prior to undertaking the construction of his manor house. He chose to build a large home in the Classical Revival style. The original architect is not known, but as of some skill, and had knowledge of the White House's design, of which Tiverton's resemblance is patterned.

Dr. Owsley's third wife and widow, Mariska Golgotzen, the Baroness Von Eltz of Vienna, Austria, survived a devastating fire that gutted the structure in 1935. She hired Richmond, Virginia, architect Carl M. Linder to rebuild the house. At this time she also employed landscape architect Charles F. Gillette, of Richmond, to redesign the grounds and gardens. Mrs. Owsley rebuilt her home to be more fire proof than its predecessor. The exterior and

interior loadbearing are the same brick construction left standing after the fire. The floor system though was replaced with poured concrete slab on steel bar-joists, with suspended plaster ceiling and wood floors on wood sleepers.

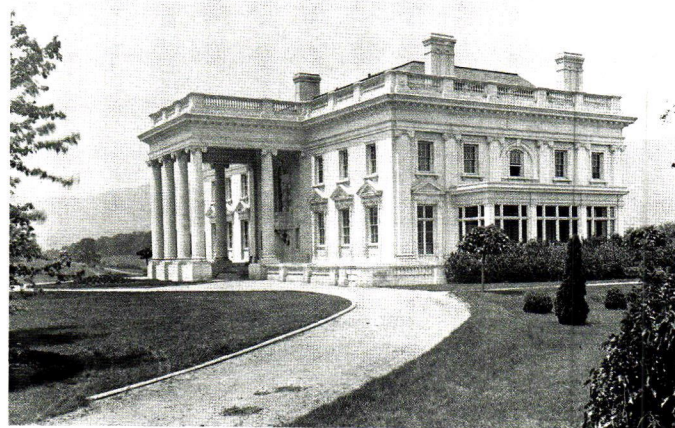
Photographs of the house circa 1912 were found as part of the Holsinger Studio Collection in the Special Collections Library at the University of Virginia. From these images, we can discern the exterior differences between the original design and the rebuilt structure. The most obvious are the elimination of the roof balustrade and southern most pediment addition. The photos of the original gardens hold little resemblance to the latter work of Gillette.

Purchased in 1960 by an out of town owner, the house was used sporadically as a summer getaway until falling into almost non-use during the past 25

years and elements and lack of basic maintenance took their toll. The gardens also became consumed by Virginia's jungle of ivy and weeds. Pools cracked, exterior stucco cracked and failed, drainage systems clogged, and even the spray coated finish, containing asbestos that at some point was touted as a cure-all for cracked stucco began to flake and peel off in sheets.

The new homeowner had only see the property from the exterior before purchasing it as his next restoration effort and future home. Working within a historic overlay district and hoping to take advantage of the State of Virginia Tax-Credit program, the charge was clear—rework the house, updating all systems, and find within it, a home for today's lifestyle.

For more photos of this home, visit period-homes.com.

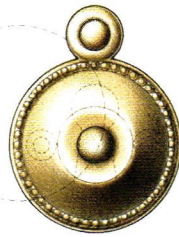


BELOW: ANDREA HUBBELL; LEFT: FROM THE HOLSINGER COLLECTION, UNIVERSITY OF VIRGINIA SPECIAL COLLECTIONS





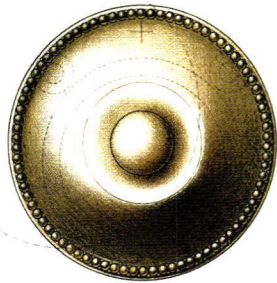
Thumb Turn & Rose



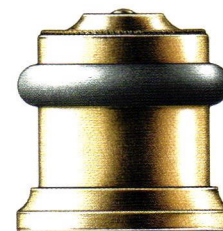
*Emergency Trim Ring
with Swinging Cover*



Shutter Knob



*Cylinder Ring
with Swinging Cover*



*Cylindrical Floor Stop
with Trim Ring*

••
B

E. R. BUTLER & CO.

*"BF" Design Series
W.C. Vaughan Co. Collection*

Door Knobs Available in 2 3/4, 2 1/2, 2 1/4, 2, and 1 3/4 inch Diameters (2 3/4 in. Shown).

Available in 3 inch Diameters for Use as Center Knobs.

Also Available in 1 1/2, 1 1/4, 1, and 3/4 inch Diameters for Cabinets and Fine Furniture.

Solid Turned Brass Knob and Rose.

Standard, Custom Plated and Patinated Finishes Available.

WWW.ERBUTLER.COM

CATALOGUES AVAILABLE TO THE TRADE · SHOWROOMS BY APPOINTMENT ONLY

3/4 Scale

FINE ARCHITECTURAL, BUILDERS' AND CABINETMAKERS' HARDWARE



Artistic's custom windows, enhancing the "wow" factor.

WWW.ARTISTICDOORSANDWINDOWS.COM

800-278-3667



ARTISTIC
Doors and Windows®

CLICK ON NO. 363