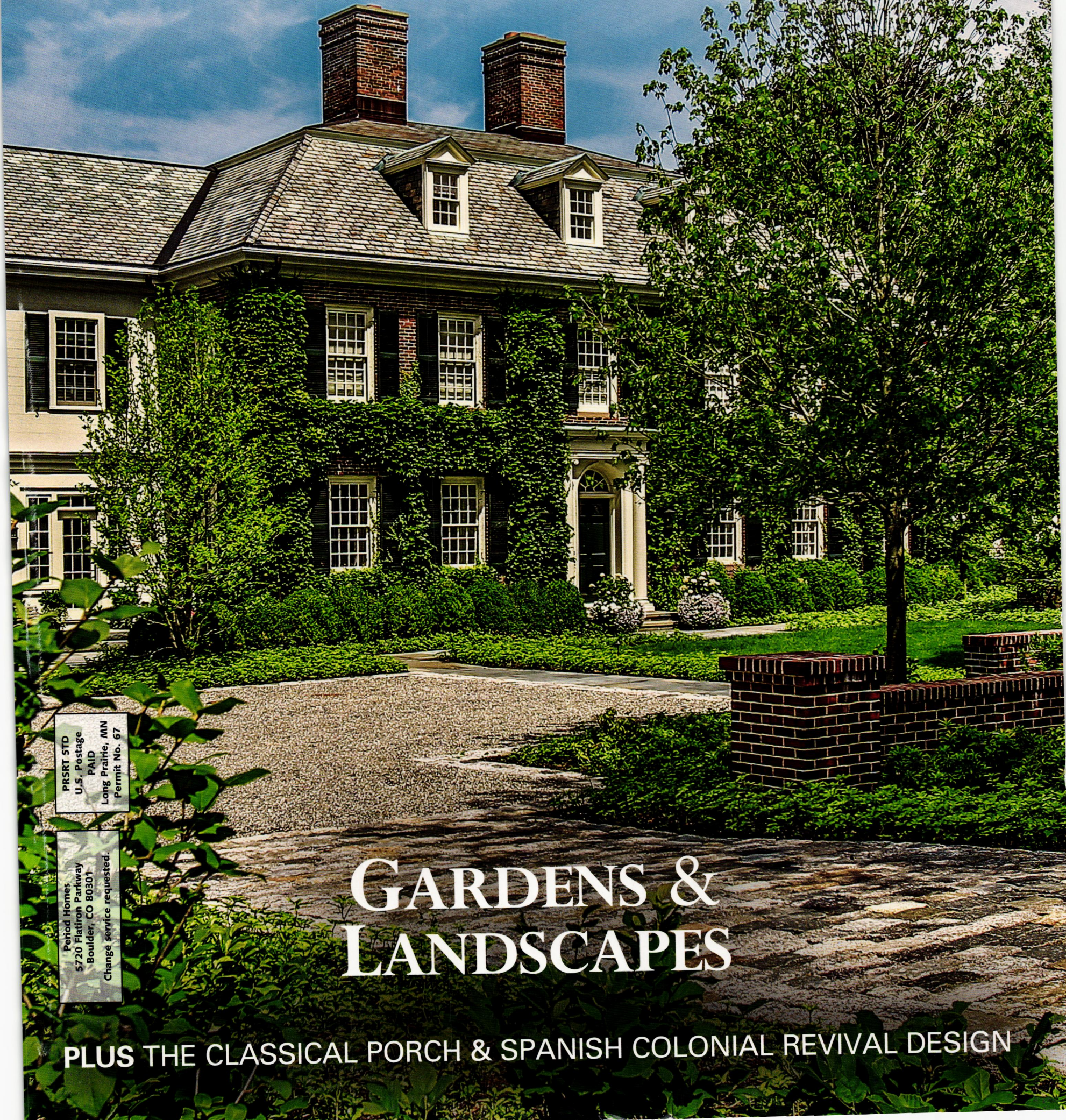


Clem Labine's Period Homes

Volume 18, Number 3 May 2017

THE PROFESSIONAL'S RESOURCE FOR RESIDENTIAL ARCHITECTURE



PRSRT STD
U.S. Postage
PAID
Long Prairie, MN
Permit No. 67

Period Homes
5720 Flatiron Parkway
Boulder, CO 80301
Change service requested.

GARDENS & LANDSCAPES

PLUS THE CLASSICAL PORCH & SPANISH COLONIAL REVIVAL DESIGN



CHADSWORTH INCORPORATED

COLUMNS BALUSTRADES PERGOLAS MILLWORK SHUTTERS

WWW.COLUMNS.COM

SHOP.COLUMNS.COM

CLICK ON NO. 1580

277 North Front Street, Historic Wilmington, NC 28401 Tel: 800.486.2118 Fax: 910.763.3191 Sales@Columns.com

HANDCRAFTED
IN AMERICA.



OUR HISTORY MAKES US UNIQUELY QUALIFIED TO HANDLE YOUR PIECE OF HISTORY.

MARVIN HISTORIC

What's the Marvin difference? It's a passion for the smallest detail. Accuracy of historical replications. Local experts, providing unparalleled architectural support. The ability to produce rapid prototypes. Creating concept to completion one-of-a-kind solutions. And Decades of historical project experience. All of this makes Marvin Historic the name to trust for your next historic renovation project. **Start your project by visiting MarvinWindows.Com/Historic.**

MARVIN 
Windows and Doors

Built around you.®

©2017 Marvin® Windows and Doors. All rights reserved. © Registered trademark of Marvin Windows and Doors.

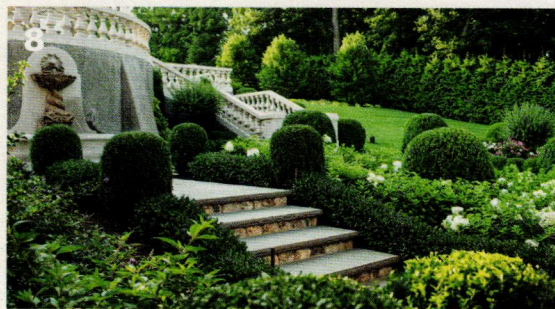
CLICK ON NO. 1611

In this Issue

VOLUME 18 ■ NUMBER 3 ■ MAY 2017

ON THE COVER

ICAA 2017 Bulfinch Award Winner
LeBlanc Jones designs a classical landscape
in Massachusetts. *Photo by Keith LeBlanc.*



8 WHOLE AGAIN

Janice Parker masterfully revives the historical charm and garden romance of an Ellen Biddle Shipman-designed landscape.

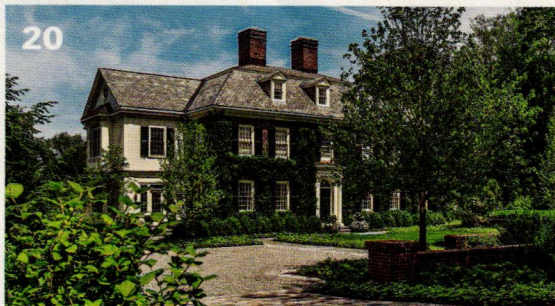
By Kiley Jacques



16 GREEK REVIVAL AND GARDENS

Milton Grenfell designs a home that creates a perfect flow between interior and garden spaces.

By Mary Grauerholz



20 IVY COURT

Clients asked for expanded access to the outdoors and LeBlanc Jones Landscape Architects gave them an award-winning landscape.

By Tovah Martin



26 THE CLASSICAL PORCH

The practical sides of these historically inspired structures.

By Gordon H. Bock



32 SPANISH COLONIAL REVIVAL

Making a fragment whole again—reimagining a George Washington Smith house.

By Diane Wilk

64 TASTE OF ITALY

Charles Hilton Architects designs a structure reminiscent of a Palladian Villa.

37 ADVERTISER INDEX

BUYING GUIDES

Historical Products Showcase	38	Fences & Gates	55
Columns & Capitals	42	Siding	56
Conservatories, Greenhouses & Sunrooms	44	Fountains & Water Features	56
Doors, Windows, Hardware & Shutters	49	Planters & Urns	57
Period Garages & Garage Doors	53	Exterior Lighting	58
Porches, Decks & Porch Parts	54	Exterior Paints & Finishes	62
Landscape & Garden Specialties	54	Exterior Molded Ornament	62
Benches & Garden Furnishings	55	Stone, Brick & Masonry	62

Period Homes

5720 Flatiron Parkway, Boulder, CO 80301
www.period-homes.com

Editor **Nancy E. Berry**
Contributing Editor **Martha McDonald**
Editor Emeritus **Clem Labine**
Editorial Director **Patricia Poore**

Creative Director **Edie Mann**
Associate Art Director **Mark Sorenson**
Junior Designer **Kanoe Wentworth**

Group Production Director **Barbara Van Sickle**
Advertising Coordinator **Lucas Gensimore**
Prepress Specialist **Idania Mentana**

Client Strategy Director **Robin Habberley**
Advertising Sales Manager **Jennifer Baldwin**
Information Services Manager **Dorian Henao**
Circulation Director **Stephanie Flanagan**



Vice President, Publisher **Peter H. Miller, Hon. AIA**
Sales Director **Heather Glynn Gniazdowski**
Director of Digital Marketing **LJ Lindhurst**
Business Manager **Patricia Pensa**
Marketing Manager **Griffin Suber**

TRADITIONAL BUILDING CONFERENCE SERIES
Education Director **Judy L. Hayward**
Director of Operations **Carolyn Walsh**



ACTIVE INTEREST MEDIA

President & CEO **Andrew W. Clurman**
Senior Vice President, CFO & Treasurer **Michael Henry**
Chief Innovation Officer **Jonathan Dorn**
Executive Vice President of Operations **Patricia B. Fox**
Vice President, Controller **Joseph Cohen**
Vice President, Research **Kristy Kaus**
Vice President, IT **Nelson Saenz**
AIM Board Chair **Efrem Zimbalist III**

Toll-free 866-566-7840; Fax: 303-440-1618
Subscriptions & Subscriber Service: 800-548-0148
Period Homes, P.O. Box 3000, Denville, NJ 07834-9965

PERIOD HOMES (ISSN # 1531-2100) is published bi-monthly by the Home Group of Active Interest Media, 5720 Flatiron Parkway, Boulder, CO 80301; 800-826-3893

Subscription rate to professionals in architecture, interior design, construction and landscape design in the U.S. and possessions: \$24.95/yr. (6 issues). Not available outside the U.S. postal system.

Contents of PERIOD HOMES are fully protected by copyright and must not be reproduced in any manner whatsoever without written permission from the publisher.

Copyright 2017 by Active Interest Media, 5720 Flatiron Parkway, Boulder, CO 80301
Fax: 303-440-1618

LIST RENTAL: THE INFORMATION REFINERY 201-529-2600

LOGO LICENSING, REPRINTS AND PERMISSIONS
CONTACT BRETT PETILLO, WRIGHT'S MEDIA
1-877-652-5295 AIM@WRIGHTSMEDIA.COM



CIVITAS



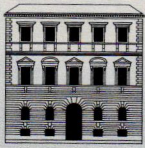
— + reserved for + —
HISTORY

Pella® Architect Series® Reserve™ windows and patio doors evoke the craftsmanship of previous generations. But it's today's conveniences and your unique vision that can turn traditional into timeless. We'd call this new offering a modern-day classic.

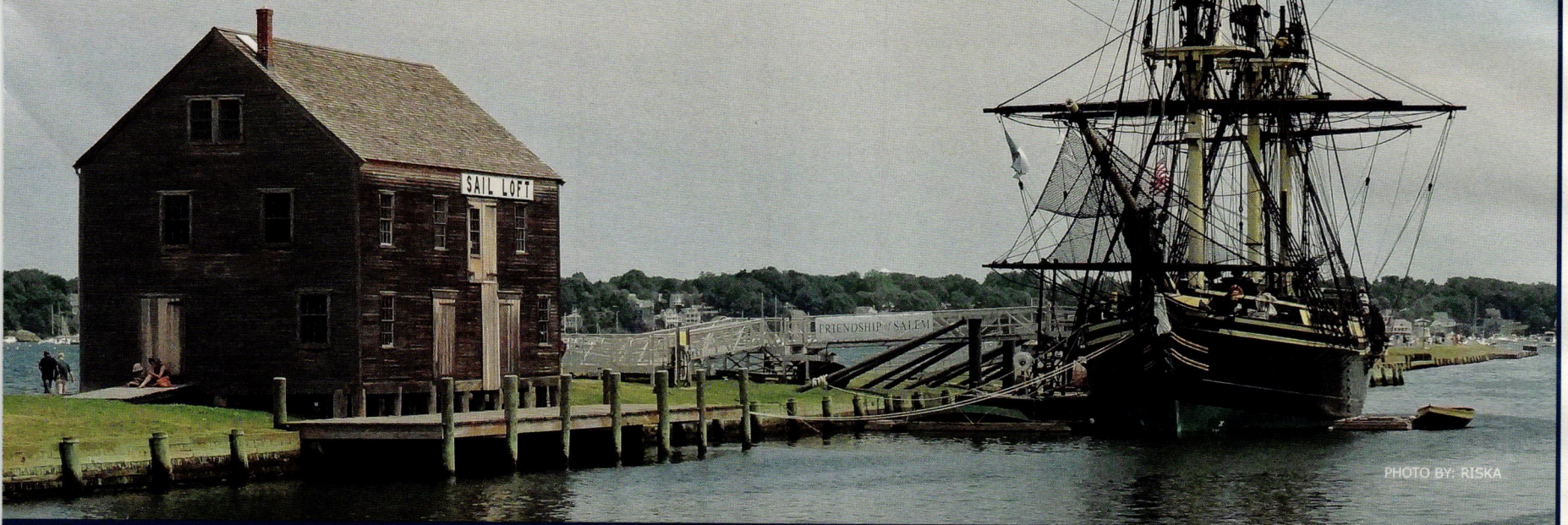
EXPLORE ARCHITECT SERIES | THE COLLECTION

Contact Pella at 866-498-2954 or visit PellaReserve.com.

CLICK ON NO. 1575



TRADITIONAL BUILDING CONFERENCE SERIES



MATERIALS & METHODS

Salem, Mass. • July 18-19 • Hawthorne Hotel, 18 Washington Square

After the Revolutionary War, Salem's unique geography and enterprising citizens established the city as one of the most prosperous sea ports in the Americas. Salem's pepper and cod fish trades created the wealth to build grand classical buildings. For admirers of traditional architecture, The Salem Athenaeum, Hamilton Hall, The House of Seven Gables and many other significant colonial landmarks constitute our living laboratory. The Traditional Building Conference in Salem features expert-led architecture walking tours which will augment our seminars. Attendees learn best practices for historic restoration and renovation in the field and in the classroom.

The Traditional Building Conference Series (TBCS) delivers focused, relevant education for architects, contractors, craftspeople, designers, building owners and facilities managers in a time-efficient format at beautiful historic venues. TBCS is a

registered provider of AIA continuing education credits. Credits for NARI, AIBD, and some NAHB certifications are available. TBCS's application to provide Massachusetts construction supervisor licensing CEUs is pending as of the mailing of this postcard.

**Join us July 18-19, 2017 in Salem, Mass.
Earn up to 10 AIA Learning Units, mostly HSW.**

- Windows: Repair, Replace, Insulate and Details
- Historic Preservation & Energy Conservation-Conflict and Compatibility
- Samuel McIntire (1757-1811) Tour
- First Period (1620-1720) Tour
- Traditional Building Craft and the Building Envelope
- Old Buildings and New Technology

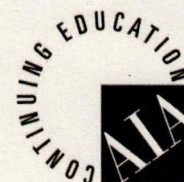
Register Online: traditionalbuildingshow.com

Registration Inquiries:
Carolyn Walsh 781.779.1560
cwalsh@aimmedia.com

Partnership Inquiries:
Griffin Suber 202.262.3401
GSuber@aimmedia.com

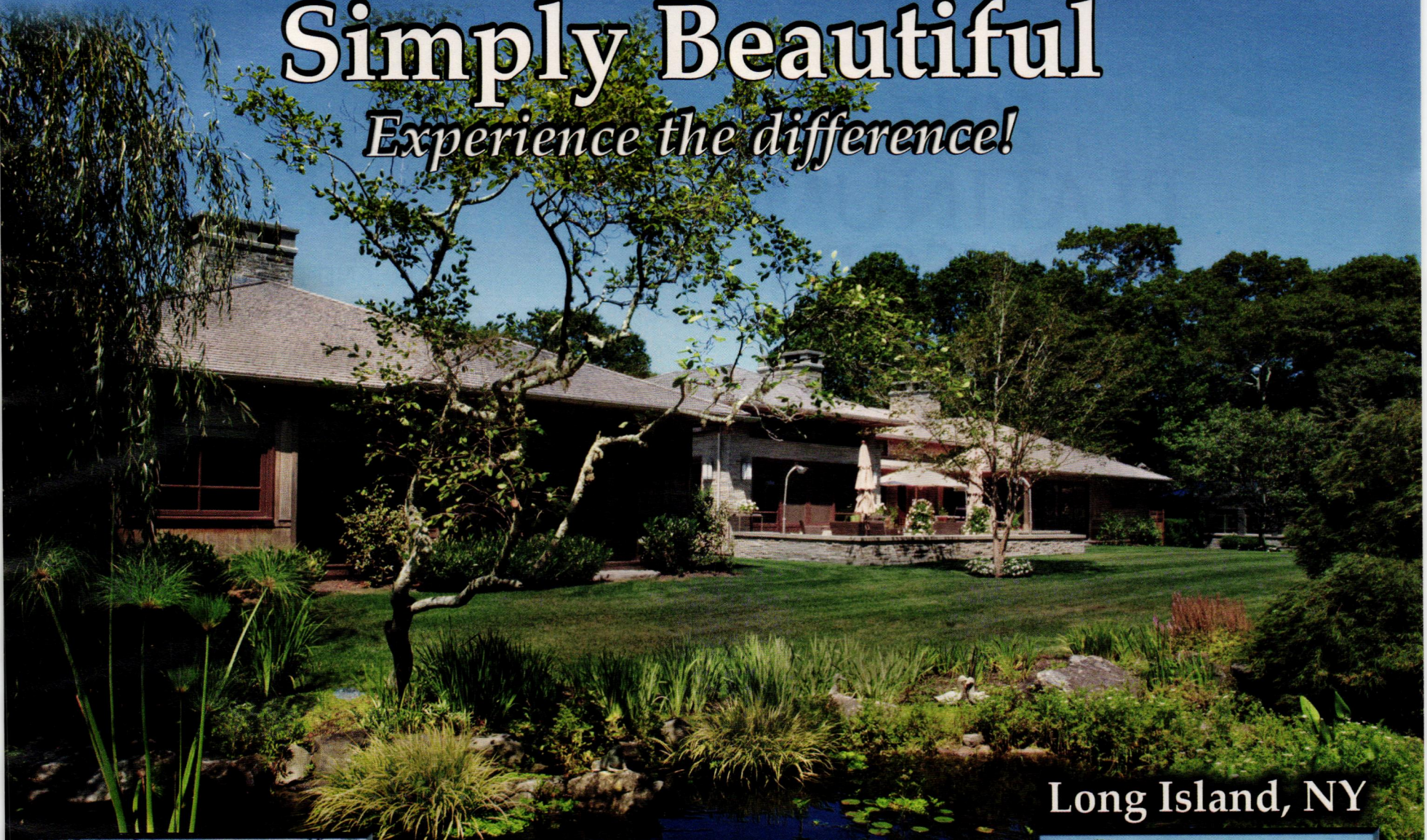
Education Inquiries:
Judy Hayward 802.674.6752
jhayward@aimmedia.com

Sponsorship Inquiries:
Robin Habberley 703.831.6588
rhabberley@aimmedia.com

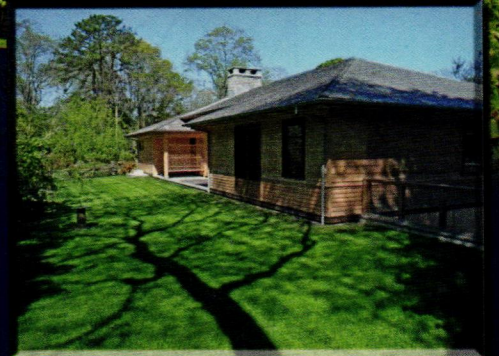


Durability, True Quality, & Simply Beautiful

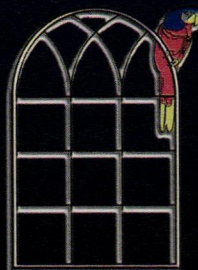
Experience the difference!



Long Island, NY



Since 1982, Parrett has offered a high quality product that is produced using the highest grade materials along with meticulous craftsmanship. Whether we manufacture using our standard parts and profiles, or if we build to your specification, you can count on Parrett quality and durability.



Parrett

Windows & Doors

Quality Crafted Windows & Doors

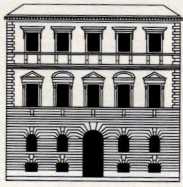
CLICK ON NO. 3003

Phone: 800-541-9527

Fax: 1-877-238-2452

www.parrettwindows.com

info@parrettwindows.com



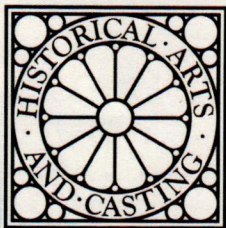
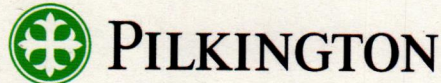
TRADITIONAL BUILDING CONFERENCE SERIES

2017 PLATINUM SPONSORS

ALLIED WINDOW, INC.



Custom Invisible Storm Windows

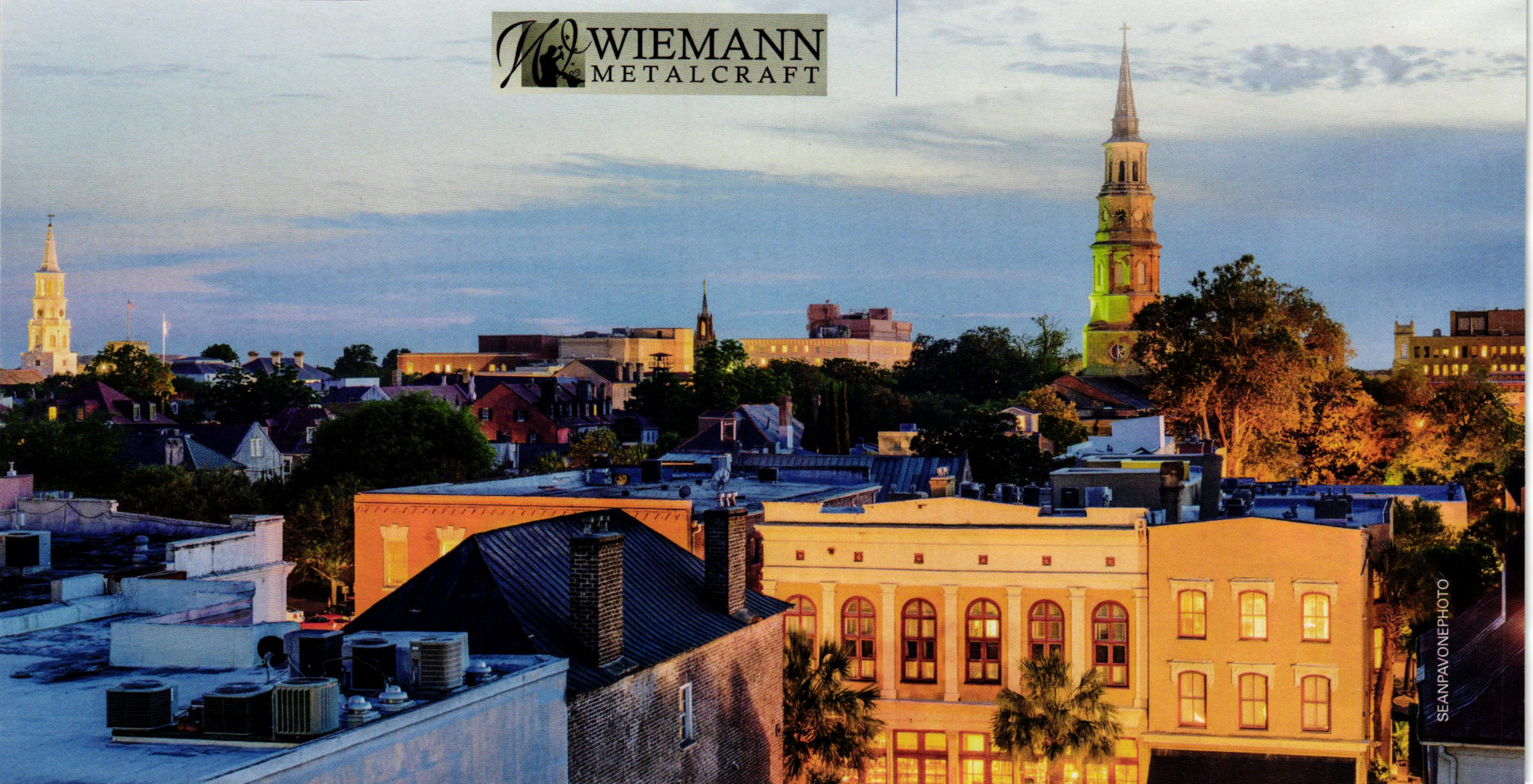


BRONZE SPONSORS

BALL AND BALL
CRITTALL WINDOWS
THERMOLITE WINDOWS

Thanks!

to our sponsors who underwrite your education including AIA continuing education credits, as well as credits for NARI, AIBD, and some NAHB certifications. These suppliers are dedicated to serving the historic restoration, renovation and traditional building industry!



SEANPAVONEPHOTO

Leave a lasting impression.



FORGE

HmwForge.com

CLICK ON NO. 1742

Period Homes
THE PROFESSIONAL'S RESOURCE FOR RESIDENTIAL ARCHITECTURE.

Traditional Building
Conference
July 18-19 in
Salem, MA

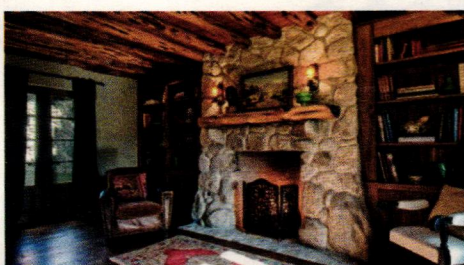
Period Homes
Buying
Guides
Browse Our
BUYING
GUIDES

Buying Guides The Magazine Projects Profiles Features Product Reports Palladio Awards Subscribe

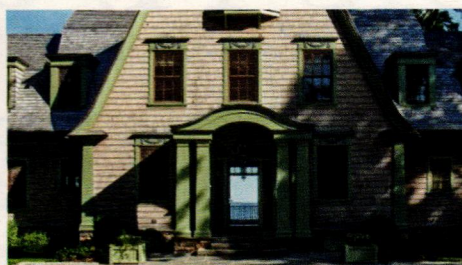


2017

The 2017 Palladio Awards



Restoration & Renovation
Restoring a Texas Ranch



New Construction
New Shingle Style

Visit the newly updated
Period-Homes.com
today for the latest
residential projects,
profiles, and our
exclusive online
Buying Guides



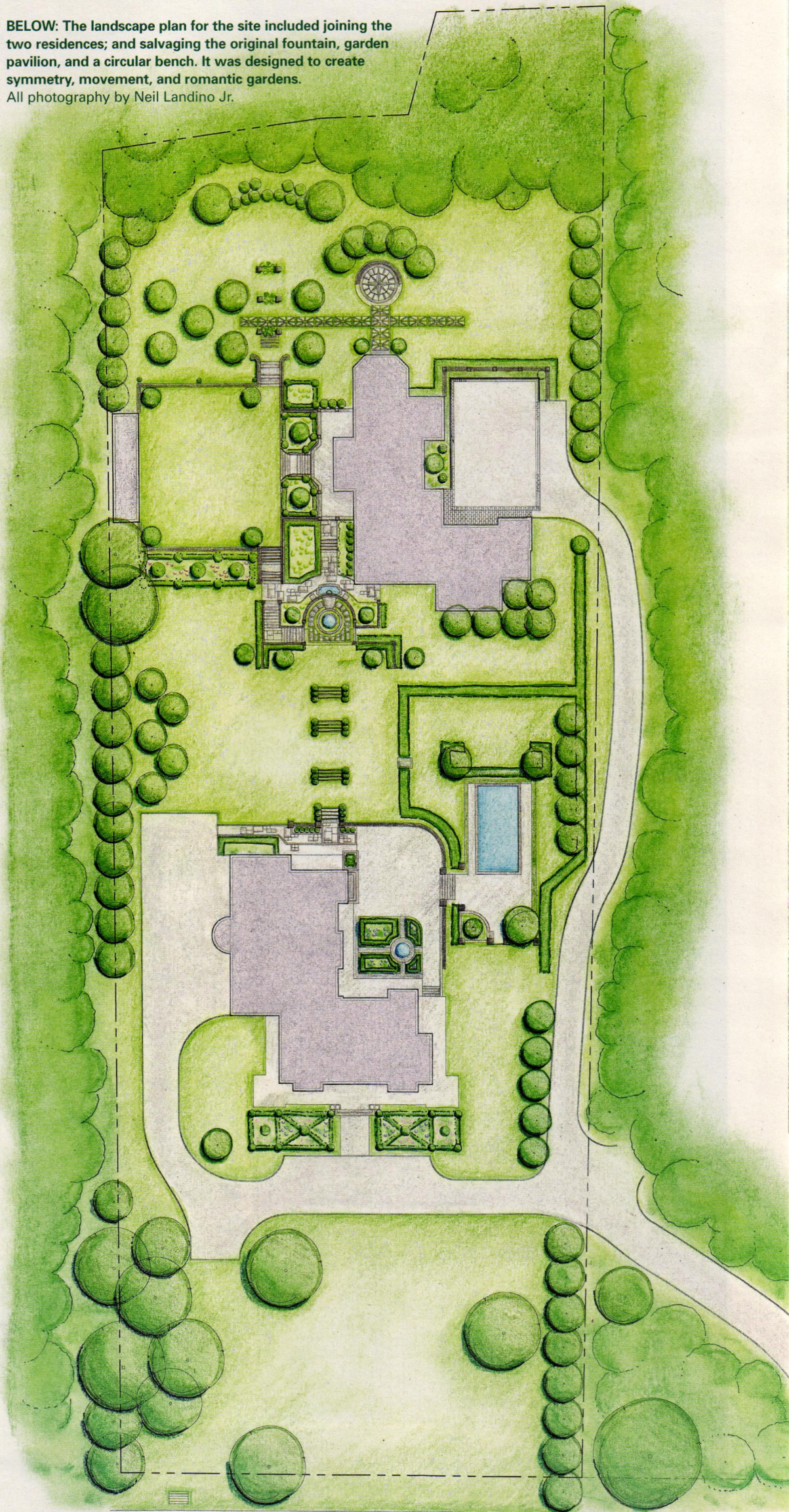
Whole Again

Janice Parker masterfully revives the historical charm and garden romance of an Ellen Biddle Shipman-designed landscape.

BY KILEY JACQUES



BELOW: The landscape plan for the site included joining the two residences; and salvaging the original fountain, garden pavilion, and a circular bench. It was designed to create symmetry, movement, and romantic gardens. All photography by Neil Landino Jr.



In the early 1920s, Ellen Biddle Shipman devised a garden and landscape for a hill-crest property in Ridgefield, Connecticut. In 2009, landscape architect Janice Parker set about restoring it to its former grandeur.

Substantive yet graceful, the two-story home was originally designed for a wealthy banker. The property has undergone a few permutations, including a stint as a nursing home. Ultimately, the main house burned down, and the property was divided into two lots—two very at-odds lots.

“When I got the project, I went to Judith B. Tankard, who wrote the book on Ellen Biddle Shipman,” says Parker, noting that there weren’t any real records of the property to guide her. Encouraged by Tankard’s words, she went forth

The "wild stag of the garden," as he is affectionately called, is a new addition meant to add whimsy and historical accuracy.





The restored steps and balustrades are framed by plantings along the steep westward slope, which was regraded and softened.

with her own ideas, looking to the book and articles for inspiration.

Her canvas was dotted with incongruities. The client's house sat high on a ridge, while a second house was posited at the base of a dramatically steep slope that characterizes the rear grounds. The first order of business was to address the uncomfortable relationship of the lower house to a round, Shipman-designed historical fountain. (Parker describes the house as having been "jammed into the fountain.") For years, the client had looked down on the problematic situation at the edge of her property, and she was anxious to resolve it.

Upon purchasing the lower portion of the original property, consideration was given to moving the fountain. However, restoration experts advised against it. The Dumbarton and Oaks-like pebbled concrete finish was crumbling and would likely be destroyed altogether in the move.

The solution was to "soften things" around the fountain and turn it into a centerpiece. There weren't any stairs coming down around the fountain, so Parker worked with architect Sean O'Kane to come up with a design that worked. Additionally, all of the balustrades were gone, but they were able to use a few pieces that had been left onsite to replicate them.

They restored a retaining wall that had completely collapsed along one side of the large square lawn, and Shipman's pool pavilion was given new luster—it's not functional but its aesthetic value is unparalleled. Parker also added a custom bench by New England Ornaments. She notes how the space works now: "The level lawn panel feels very nice and calming. Without it everything keeps dropping off. It is a wonderful place for weddings, family events,

A pebble mosaic compass rose, trimmed in tumbled bluestone brick, was fitted to an existing curvilinear bench—an original feature.



The pattern for the grass-joined paving was inspired by the British flag.

and the many fundraisers the client hosts.”

Though the division of the property into rooms and corridors helps to make sense of its circulation, Parker says it was a challenge to find the geometry in this project. Because the houses were never meant to be together—they were both built in the early 2000s—and the fountain was in such an odd location, she was dealing with pieces from different puzzles and their edges didn’t line up. “We had to play around quite a bit,” she recalls. “I felt symmetry was really important because otherwise you didn’t know where to go.” To that end, she put in a British flag-patterned pathway on the lower level; and laid a pebble mosaic compass rose, trimmed in tumbled bluestone brick and dressed with a necklace of hornbeams. She also kept the stairs on one line to tie the houses together.

The lack of large trees added to the disparate picture. “It seemed to me, laying out all of the structures and elements was of course important, but holding the volume of space together with trees and accents of plants was more important because there were not any old trees left between the two houses.” The repetition of fastigate copper beeches against the pale stonework serves that purpose.

The historical character of the fountain, pavilion, other other structures called for a program that would lend “age” to the planted landscape, too. Traditional greenescapes of hornbeams, magnolias, dogwood, and boxwood parterres are in keeping with the Classical tradition, while the use of chartreuse Hakonechloa grass, ‘Limelight’ hydran-



A red fastigate beech both anchors the lawn panel and catches the light—an intentional design decision resulting in a twinkling gem effect.



geas, *Deutzia gracilis* 'Chardonnay Pearls', weeping Japanese maple, and 'Roseanne' geranium are contemporary choices. Parker explains that the client didn't want a lot of color, so she relied on bronzy purple accents to set off the primary green spaces. They also serve as a bridge between the whites and pinks of the arching rose blooms.

The experience of the grounds is one of wonderment, which was part of the design intent. "What I always feel, and hope other people feel—especially in the early spring, when the fastigate beeches are ruby red in the light—is like Alice in Wonderland," says Parker, noting the many surprises visitors discover as they tour the property. "Rubies on trees," dolphin fountains, a statue of Aphrodite, a wild stag sculpture, and even the pool pavilion are "playful

focal points," which combine with Classical elements to evoke romance.

For Parker, the property's restored glory is a tribute not only to Ellen Biddle Shipman but also to pioneers like Beatrix Farrand and Annette Flanders. "There were a lot of important gardens designed in the last century that really set the tone," she says, recognizing the potential her predecessors bestowed on the suburban garden—the potential to create timelessness by combining a limited plant palette with traditional elements and playing with proportion and space. "Simple plantings of very pretty, special plants can be used in a way that is not predictable," notes Parker, who sees this particular landscape as Classical, though located on a suburban lot. "By keeping the Classical pieces, it doesn't come

off as pretentious because it is historical, but it avoids the suburban predictability."

Parker ultimately ties successful suburban garden design to the matching success of the women who mapped a course for future female landscape architects. To convey her respect, she shares this quote:

"Not for one instant will this daunt a woman to whom landscape design is a master passion. She exults in the demands upon every power of mind and body. In other words, she is an artist and, insofar as her art is concerned, a willful fanatic."— Mary Bronson Hartt, *Women in the Art of Landscape Gardening*, 1908

This sensitively reimagined landscape is evidence that Janice Parker is one such undaunted artist. ■



ABOVE: Traditional plantings like clipped boxwood and roses mix with more contemporary choices such as *Deutzia gracilis* 'Chardonnay Pearls'.

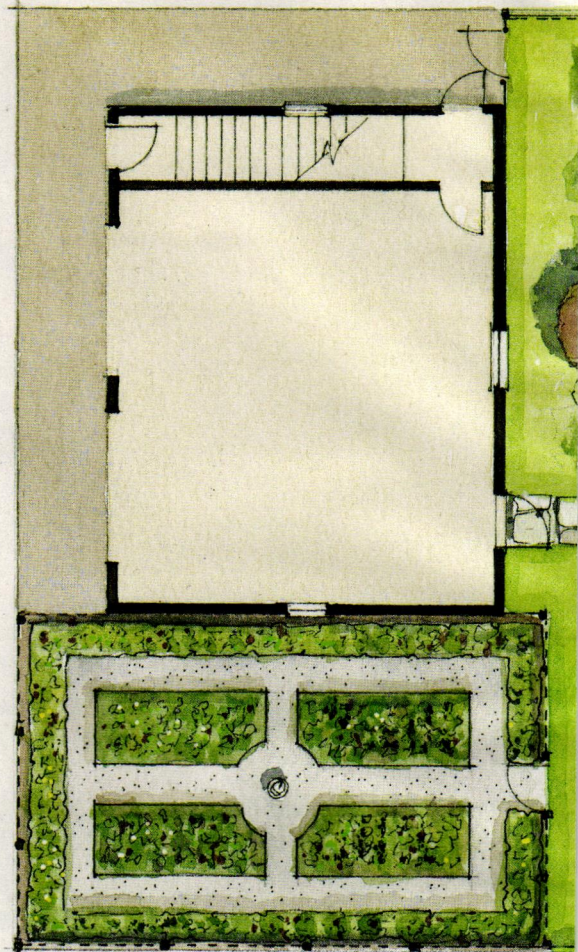
RIGHT: The stucco pebble matrix was re-created for the restored dolphin fountain—a central feature.

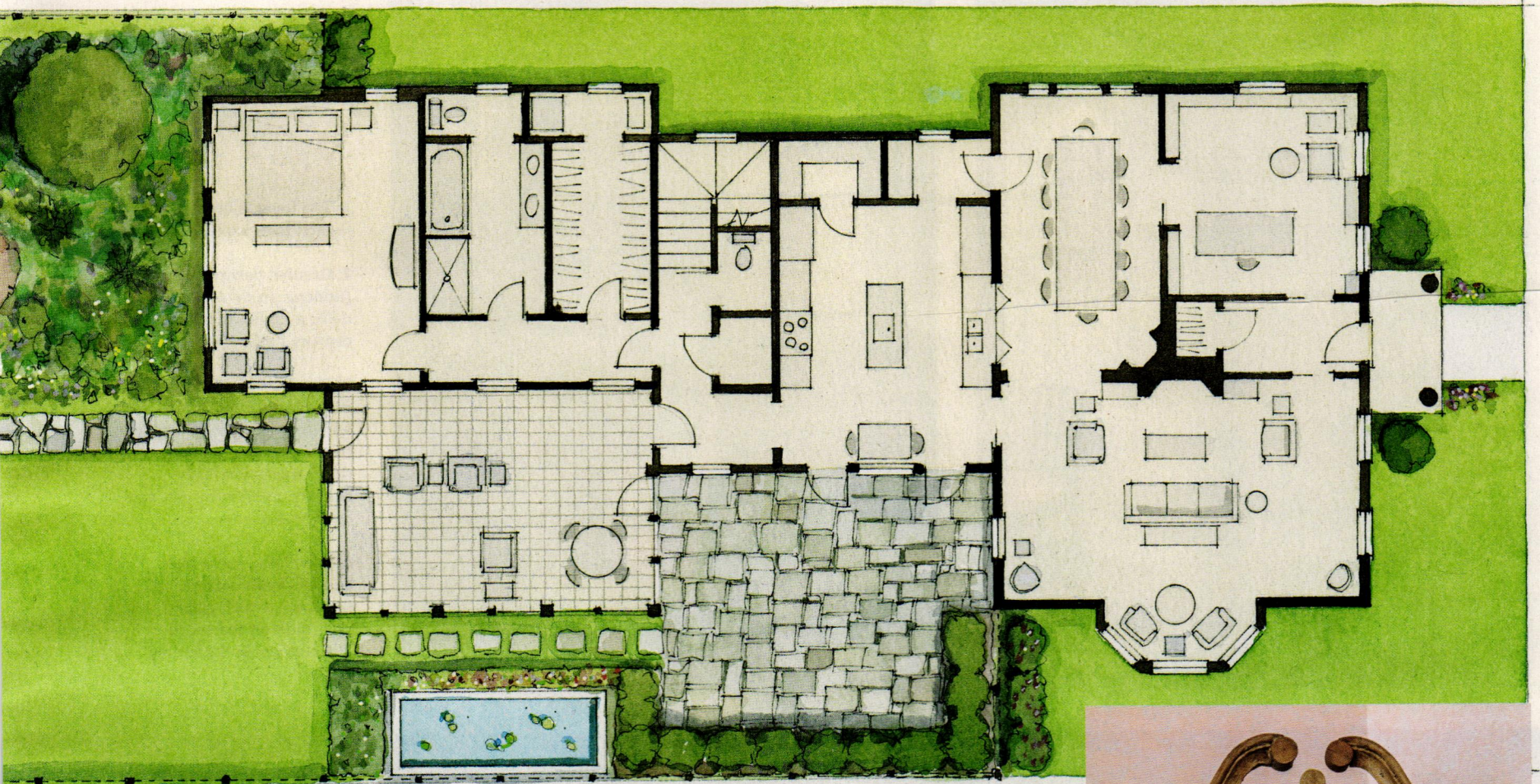


Greek Revival and Gardens

Milton Grenfell designs a home that creates a perfect flow between interior and garden spaces.

BY MARY GRAUERHOLZ





ABOVE: Architect Milton Grenfell found various ways to open the home to the outdoors, a request of the homeowners. Illustration by Rob Leanna.

RIGHT: An antique grandfather clock in the dining room, fashioned in pine, has a decorative hand-painted clock face.

BOTTOM: In the living room, a deep east-facing window provides beautiful morning light. All photography by Eric Roth.

Saratoga Springs, New York, with its genteel summer homes and horse farms framed by rolling hills and the mountains beyond, has always had a certain gilt-edged glimmer. But when architect Milton Grenfell signed on to design a new house in town, it wasn't a lavish project on a spacious piece of land; the project would be a modest home on a small narrow lot located on a historically blue-collar street near Skidmore College.

In addition to the challenge of working within the small lot without crowding the neighbors or sacrificing privacy, Grenfell got a major directive from his clients, Phyllis and Sam Aldrich: to incorporate aging-in-place features so the couple could look toward a future in their house.

"The central challenge," says Grenfell, principal of Grenfell Architecture in Washington, D.C., "was how to comfortably fit a lot of program on the ground floor, and still have enough ground left over for gardens. Also, they didn't want to have to walk up and down stairs—which meant that they needed to have everything essential on the first floor, yet without feeling cramped."

The Greek Revival style, our country's first national architectural style and a favorite of the clients, worked with the design challenges. "It has something comfortably Currier & Ives about it," Grenfell says of the style with early 1800s origins. "It became our first national style, with pattern books widely available for the first time in the early 19th

century, when all things Greek were the rage. For the first time, carpenters, with no architectural education, could build a refined architecture from pattern books, and the reigning style in the books was the Greek."

The flexibility of the Greek Revival language enabled Grenfell to turn out a classically beautiful form that deftly addressed the project's many program requirements. Grenfell took advantage of the style's various features to render a house where the Aldrichs could age in place gracefully.

For instance, one common Greek Revival feature—a tall frieze atop giant order corner pilasters—was the perfect device for forming a 1,545-square-foot half-story above a 1,895-square-foot ground floor, complete with a line of dormer windows set into the frieze. "The tall frieze allows more headroom in the attic," Grenfell says. "We used this and other volumetric devices to give the family the amount of habitable attic space they wanted to accommodate the frequently visiting family and friends." By hiding second-story space in the attic, the home's one-and-a-half-story exterior blends with the rooflines and massing of surrounding houses on the street. The Doric columned front portico gives the house dignity, yet is understated so it doesn't upstage the modest streetscape.

Inside, all the most important rooms are on the first floor, including a spacious master bedroom suite projecting into the quiet rear gardens. Because the couple frequently entertains, the kitchen con-





1



2

1: The foyer is lined with French toile wallpaper.

2: Grenfell designed Sam Aldrich's study around the desk, a replica of an 18th-century Italian piece.

3: The first-floor living room is a favorite spot for the homeowners, especially in the winter. Hanging above the fireplace is a 17th-century painting by Jan van deCappelle.

4: The dining room also benefits from east-facing windows, which allow light to flood the space. The chandelier is a family heirloom.



3

nects to the dining room via a butler's pantry, for storing stemware, china, and linens, while also serving as a buffer between the two rooms. For cocktail parties and casual dining, there is also a shuttered pass-through for serving between the two rooms. "Little features in a little house can make a big difference," Grenfell says.

Grenfell believes that each room should have its own memorable character. For example, the south-facing breakfast nook off the kitchen looks onto a sunny garden terrace. Meanwhile, the formal dining room is on the north side. The library, on the southeast corner, catches the morning light. While the living room in the southwest corner room also faces the street, its bay window burnishes the room with afternoon light.

Upstairs are two guestrooms with a shared bath, yielding plenty of space for hosting the couple's visiting children and grandchildren. There is also an exercise room and a study for Mrs. Aldrich, a professor and scholar who taught for many years at Skidmore. The Aldrichs also asked for a detached garage on the alley, with the option of upstairs living space for a caregiver, in case one might be needed someday. The garage has another role, as well: forming a trellised privacy wall for the shade garden.

To house so much program downstairs and not have it feel claustrophobic, Grenfell developed a central circulation spine as a long enfilade (a series of rooms with aligned doors) used to grand effect in 18th century palaces. As the eye traverses the 100 feet of the house's enfilade, a succession of five different rooms (the fifth being the rear garden), each with its unique light quality and character, present themselves. A bay window in the living room, breaking out of the Greek Revival box, proved to be another very good device for creating spaciousness. As Grenfell says, "The southwest facing bay reaches out to bring in the street view, side garden, and sunlight, thus magnifying an otherwise small room."

Such clever devices allowed Grenfell and the general contractor, Field Horne of Horne Classic Houses in Saratoga Springs, to weave elegance and practicality for a singular effect. "Variety is an aspect of one's perception of size," Grenfell says. "If something can be readily grasped in an instant, it seems small. Something richer, more complex, and less predictable keeps your attention longer and seems larger."

Maneuvering the structure to extend toward the property lines, then pulling back when necessary, helped to create outdoor spaces that serve a variety of purposes. "In our practice, we always regard the outdoors as an extension of the indoors," Grenfell says. "Because of the carefully orchestrated massing of the house, we were able to create a number of gardens. They're small, but like the interior rooms, each has its own shape, size, light conditions, character, and uses."

Pushing the house against the northeast property line opened up gardens along the southwest line, positioning them for maximum sun. The living room projects toward the side property line where a neighbor's house is pulled away from it; then the kitchen/dining pulls back where the neighboring house extends toward the property line. "Like a ballroom dance step, the back and forth works for both parties," Grenfell says. "Visually we're stealing space."

On the northwest corner is a lawn terrace, perfect for playing croquet and gamboling with grandchildren. A stepping-stone walk from the garage to



a screened porch demarcates the shade garden on the northern corner from the lawn terrace. A kitchen garden with vegetables and herbs gets full sunlight from the east and south.

The home's architecture and all its creative devices have shaped a house that Sam and Phyllis Aldrich love. For Sam, who played a key role in sav-

ing Olana, the Victorian villa that was home to the painter Frederic Edwin Church, his house is comfortable, contained, and connected to the region's past. One of Phyllis's favorite spots is the living room bay, with windows so tall they extend almost to the ceiling. "I love the house," she says. "It feels classical and peaceful and really good." ■

In keeping with their mission to recycle, LeBlanc Jones used salvaged cobblestone for the transition to the courtyard of Ivy Court while a brick wall echoes the house front. Photo by Keith LeBlanc.



Ivy Court

Clients asked for expanded access to the outdoors and LeBlanc Jones Landscape Architects gave them an award-winning landscape.

BY TOVAH MARTIN

When a young family with growing children reached out to LeBlanc Jones Landscape Architects, they were just itching to get outside. With an acre surrounding their Chestnut Hill suburban Boston home, they sensed that the property had potential to accommodate their outward bound focus. They wanted more opportunity to bond alfresco, but the property's layout lacked spaces to lure them outside. At the same time, they preferred

simplicity. The same no-nonsense style that guided the architecture of the historic house needed to extend to an equally embracing outdoors.

Ivy Court, their 1920s brick house with decades of established Boston ivy clambering up its walls, has considerable presence that begged to be softened by copacetic surroundings. Not only does the house possess innate grandeur, but that majesty spreads into the adjacent neighborhood. This was a scene that could be broadened to look out on borrowed landscapes with views of sensitively maintained

mature trees. When Doug Jones began to toss around ideas, not only did he think about the gem in its immediate setting, but he also considered opportunities to bring the greater ambiance into the picture. What he wove was a bond between close environs and vistas farther afield.

Standing two and a half stories tall, the house has presence. And that spatial range begged to be balanced by meaningful green areas outside. As a strategy, LeBlanc Jones explored the area immediately around the house for space that might

A pachysandra-lined bluestone walkway runs along the entire front of the house, beyond just leading to the front door. Photo by Keith LeBlanc.





become functional. What the design team found was valuable areas that could be enlisted if they were rethought. That's when the plan to think out of the box and reconfigure the driveway was hatched. Suddenly, landscape immediately behind the house was freed for a lounging terrace with a room-like configuration. Given elegantly selected containers and comfortable furniture, the space uses the house as a backdrop, softened by a row of *Viburnum 'Winterthur'* as an anchor on one side. The space is further shaded by and feathered into the landscape thanks to a preserved weeping cherry and a newly inserted *Maackia amurensis*. "The *Maackia* was a unique choice," notes John Haven, senior associate at LeBlanc Jones who led the design for the project. "It was selected for its open-branched habit, white sum-

mer blossoms, and elegant shiny cinnamon-colored bark." But the view toward a set of lawn steps leading to a playing field is the main focus. Thanks to this "found space" the family has become grateful spectators for numerous lacrosse matches held on the lawn. Farther out, a curving border of trees is layered with lower shrubs. The lounging area also allows monitoring of a niche with a rustic play swing backed by conifers. In short, recreation of all types is now part of the picture.

Harnessing the newly claimed space, the terrace continues around back with seating areas that spill from other doors making the house open-ended wherever possible, offering convenient walkways to the lawn before merging into a parking court with access to the garage. Sensitive to storm water

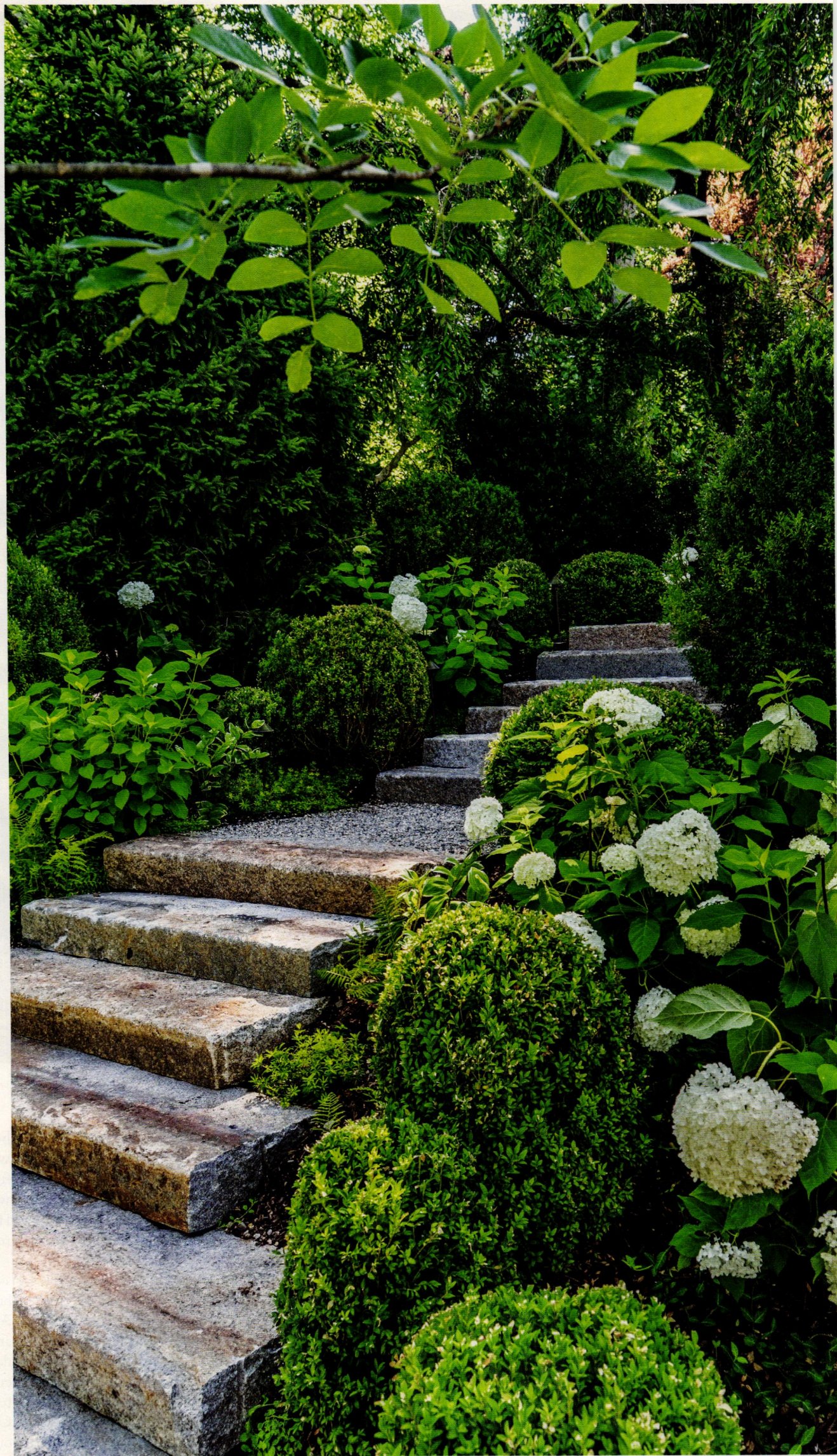
run-off issues and striving for permeable surfaces, LeBlanc Jones went with gravel rather than paving wherever possible, especially where snow shoveling would not be necessary. Salvaged granite was repurposed to create the lawn steps as well as other granite segues to achieve grade changes. Meanwhile, lines in those recreational areas flow comfortably from one user-friendly space to the next. As Doug Jones explained of their intent, "While we were always respectful of the architecture and its history, this is not just a garden for viewing, it's a place that hosts contemporary living."

The front of the house lent itself to more formality and sharper angles to reflect and respect the architecture. Here, LeBlanc Jones asked their client if they intended to use the front lawn and the



ABOVE: Granite steps gracefully and handsomely transition the slope into the playing field while a pea stone terrace accented by *Maackia amurensis* makes use of the level below the house's first floor. Photo by Eric Roth.

RIGHT: In keeping with their theme of a relaxed landscape, low-light tolerant 'Annabelle' hydrangeas casually nod their heavy flower heads beside granite steps. Photo by Eric Roth.





Irregularly laid bluestone with *Mazus reptans* 'Albus' planted in the crevices leads to the sunroom.
Photo by Keith LeBlanc.

response was that they rarely found the opportunity. Nonetheless, the landscape architects configured the space to make further recreation possible and were delighted to learn that the square lawn framed by bluestone now hosts alfresco birthday parties. In front, a brick retaining wall forms a defining line while billowing mature yew was kept as a counterpoint to the prevailing linear accents. In addition, the retaining wall also supports a raised plinth-like table where a matrix of neatly clipped boxwood orbs spreads to give a totally unique, almost green-upholstered appearance from the front lawn. On another level, the view across that lawn leaves “window” glimpses at magnificent colorful mature neighboring beech, elm, goldenrain, and Japanese maple trees. Beyond being insightful, the design celebrates the

bigger picture in innumerable ways.

The scene has an overarching grandeur and utilizes diverse plants ranging from perennials to shrubs and trees. Annual accents change seasonally and are tucked into graceful Pennoyer Newman containers that bring green elegantly to the elbow of lounge chairs and accenting doorways. Because so much is going on in this hardworking landscape, the homeowners wisely requested only white-flowering plants. In the containers, the white palette translates into white roses, jasmine, and alyssum (changed out seasonally) as well as orbicular boxwood. For the perennials, Solomon’s seal, ferns, hellebores, and sweet woodruff cover ground. In the shrubbery department, hydrangeas and viburnums prevail—although red and yellow fruit is a permitted bonus

beyond the white theme in late summer and autumn when hungry birds harvest the goodies. So the colorful fruits go to a good cause. “We took the green and white palette as being an opportunity,” notes John Haven. “It’s one of the property’s strong suits, the result is very succinct.”

In a word, the presentation is brilliant, a conclusion that is not only echoed by the grateful neighborhood but also proclaimed by the Institute of Classical Architecture & Art, which conveyed their seventh annual Bulfinch Award on LeBlanc Jones’ Ivy Court design. Given its creativity and sensitivity to the environment, this multi-layered gem adds green luster to a magnificent house. The landscape around Ivy Court respects the roots of the home while building on the property’s future. ■



Faux-lead planters from Penoyer Newman spill with hydrangea and variegated English ivy on a landing shaded by a preserved weeping cherry. Photo by Eric Roth.



Architect Gil Schafer designs a Greek Revival facade with fluted Doric columns. All photography by Eric Roth.



The Classical Porch

The practical sides these historically inspired structures.

BY GORDON H. BOCK

Classical porches are not only the essence of ancient classical architecture but also a signal feature of American houses, with many deriving their forms and features from ancient Greece and Rome. Nonetheless, the logic and formality that drives ancient classical porches has a history of taking a back seat in the mix-and-match architecture of America—especially early America—when trumped by the practical needs of builders and clients, rendering many classical precepts more as penciled in guidelines on paper than hard rules set in marble.

PILLAR TALK

With a history as rich as the faucet industry itself, Among the five traditional classical orders—Doric, Ionic, and Corinthian from ancient Greece with Composite and Tuscan via ancient Rome—evidence suggests that Tuscan columns predominate in American porches regardless of the rest of the building or architecture. Documented as far back as Vitruvius, the Tuscan as commonly realized has an unfluted shaft with a straightforward base and no-frills capital where the only decorative details are a few, simple, bold mouldings. Is it any wonder then that Tuscan has long been the column of choice for

vernacular interpretations of classical architecture or academic revivals? It's simplicity makes it relatively easy to understand and build, especially out of wood and with simple tools. (No surprise too that the Tuscan is derived from the similar looking Roman Doric, which historians believe to be based on wood originals.) Planbook architect Asher Benjamin, the stylistic tutor of early American carpenter-builders, singled it out in *Practice of Architecture* (1833) noting that "The Tuscan capital is distinguished by rustic plainness."

Today, traditional, staved-wood columns are on the wane in the column marketplace for new con-



struction, but the Tuscan order still ranks high as a top-seller in modern materials, such as fiberglass (especially spiral-wound), polyester composites, and cast stone, and for the same ease of construction reasons.

SPACE PROGRAM

To go by classical principles, for harmonious appearance the distance between columns in a portico or colonnade—the intercolumnation—should follow one of the proportioning systems related to column diameters—for example, separated by a distance of $1\frac{1}{2}$ times the column diameters at their bases, or 2 diameters, or $2\frac{1}{4}$ diameters, and so on. By rights, when the porch is in the Doric order, columns also need to be positioned in relation to triglyphs (fork-like ornaments) in the entablature, such as under every other triglyph, or separated by two triglyphs, or three or four. All works out sublimely when the building is a mammoth temple, such as the Parthenon or Pantheon, but at a residential scale

the system can show practical shortcomings. As Americans like Asher Benjamin pointed out early on, if the columns are, say, only 18" in diameter, the intercolumniation would likely have to be at least $2\frac{1}{4}$ diameters to permit a person to comfortably pass between columns (much less not block windows in the building itself). On the Doric issue, the columns could also be spaced by three triglyphs. In either case, though, while the porch would probably be structurally viable, it could appear visually anemic at it attempts to support of all the "heavy" ornament in the cornice—not very classical.

One way around this column conundrum is for houses to avoid the Doric order altogether, or at least strict adherence to its entablature, a solution Benjamin himself advised. Even better though is to pair up columns in couples instead of evenly spaced intervals. While uncommon in both ancient Greek and Roman examples, coupling became a pet solution for 18th-century architects no less than Sir Christopher Wren, giving a new look to the classical

porch while still fulfilling the craving for columns. Indeed, in 1830s America, paired columns were holding up many of the best entrance porticos. By the end of the century pairing—even tripling at corners—became close to a fad for Victorian era porches, and remains an attractive device still used today.

MORE IS MORE

In its most austere vocabulary and conventions, the classical porch grew evermore archaic and passe during the Victorian era, as designers flitted among the various revival styles of the late 19th century in search of fresh architectural titillation. Then, in the 1890s through early 1910s, the taste for authentic classical porches cycled back—but as with all fashions, in not quite the same way as before. The Neoclassical Revival style, as it is often called, was charged by not only a residual thirst for the eclectic, but also the World's Columbian Exhibition of 1893 in Chicago, which dictated classical as its



LEFT: This Pensacola, Florida, house used a simple column and railing in its design.

BOTTOM: Architect Sandra Vitzthum designs a porch using elements of the Gothic Revival in Vermont.

RESOURCES

Chadsworth Columns

Haddonstone

Worthington Millwork

Melton Classics

Architectural Elements





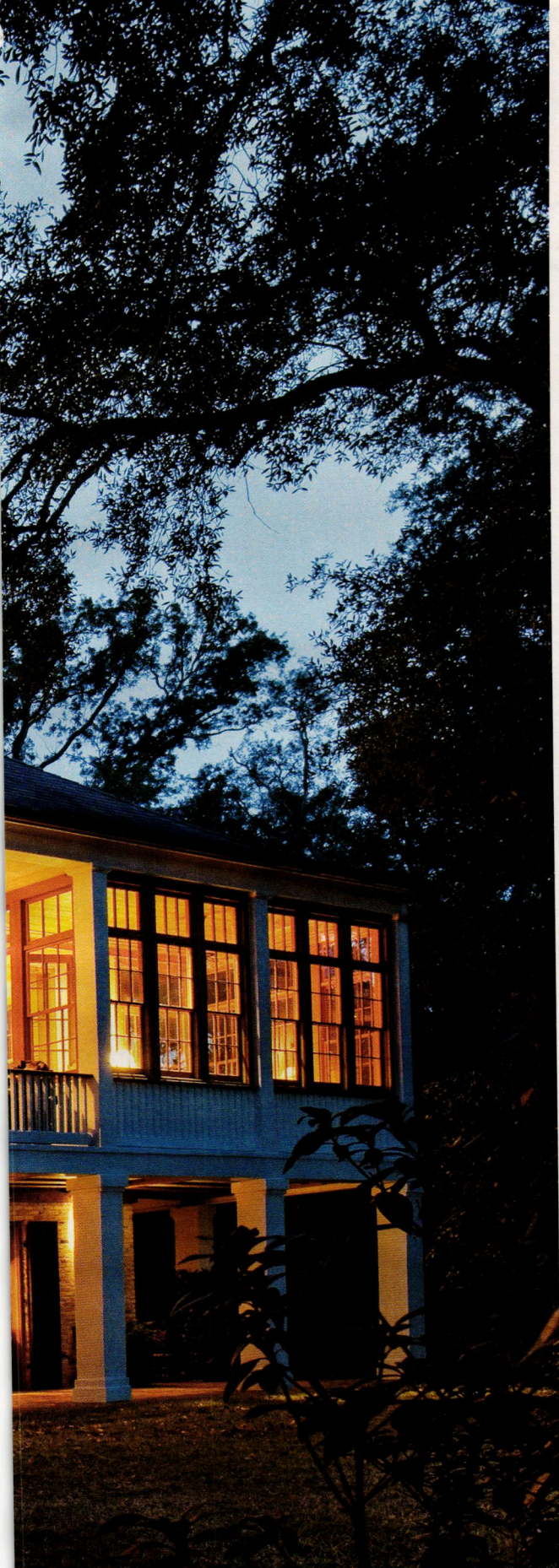
architectural theme and exemplified the prosperity and bigger-is-better mentality of the late Industrial Revolution.

While the Neoclassical Revival revived the appeal of academic accuracy in classical porches, it also sought fresh ways to say classical for a booming building market by reinterpreting known details, unearthing new ones and, most impressively, manipulating their dimensions. Architects hit the books researching, in particular, Roman and Italian Renaissance examples to find novel historic models, such as the wide capitals of the Paestrum variation of the Doric order (derived from an ancient Greek

colony in Paestrum, Italy) employed by architect Henry Trost in 1902. Neoclassical Revival porches in houses flaunted a clear bias towards the ornate and elaborate, favoring fluted columns and complex capitals, such as Corinthian and Ionic, made possible by mass-production techniques and molding with composition materials. Most dramatic though was the amping-up in scale, frequently to the thresholds of exaggeration. Entrance porch columns commonly rise the full height of these large, two-plus storey houses, and in other versions extend across the full width of the façade. They were conspicuous in their profusion too, with a two-storey entrance

porch often straddling another, lower, one-storey, full-width porch, a combination all but unheard-of in the ancient world.

Neoclassical Revival houses of the 1890s and 1910s set a standard for mammoth porch supports that is rarely matched today, even in the age of McMansions and Las Vegas-style megaresorts. Hard to believe these behemoth columns were made of staved wood, a lively industry at the turn of the last century that endured into the 1990s until one-by-one, premier, original manufacturers like Hartmann-Sanders and Schwerd, changed ownership or closed their doors. Today, columns up to



LEFT: The two-story porch is of the traditional Southern vernacular. Note the difference of the width of the columns on the first and second stories.

BELOW: Architect Sandra Vitzthum uses classical details for a Greek Revival porch in Connecticut.



24 feet tall can be had in a single piece in modern materials such as polyester resin composite. Larger columns are typically made in thin-wall fiberglass and in sections. While these can be load-bearing, they are designed to also be covers around steel. More to the point however, they don't require a big crane to set the column, so they are far easier to handle than a couple continuous storeys of classically crafted spruce. ■

Gordon Bock is an in-demand speaker and instructor with the National Preservation Institute (www.npi.org) who lists his upcoming keynotes and seminars at www.gordonbock.com.

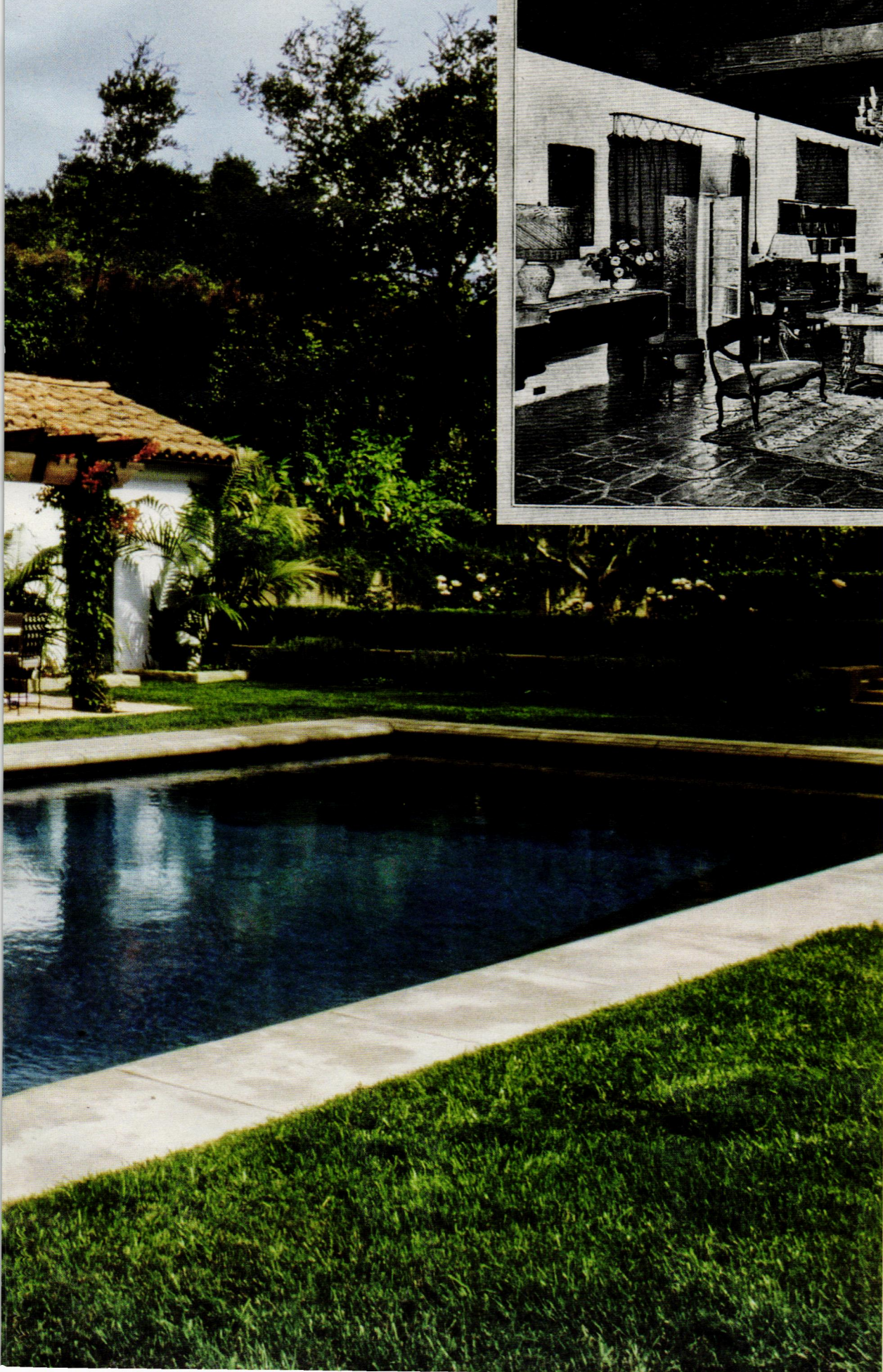
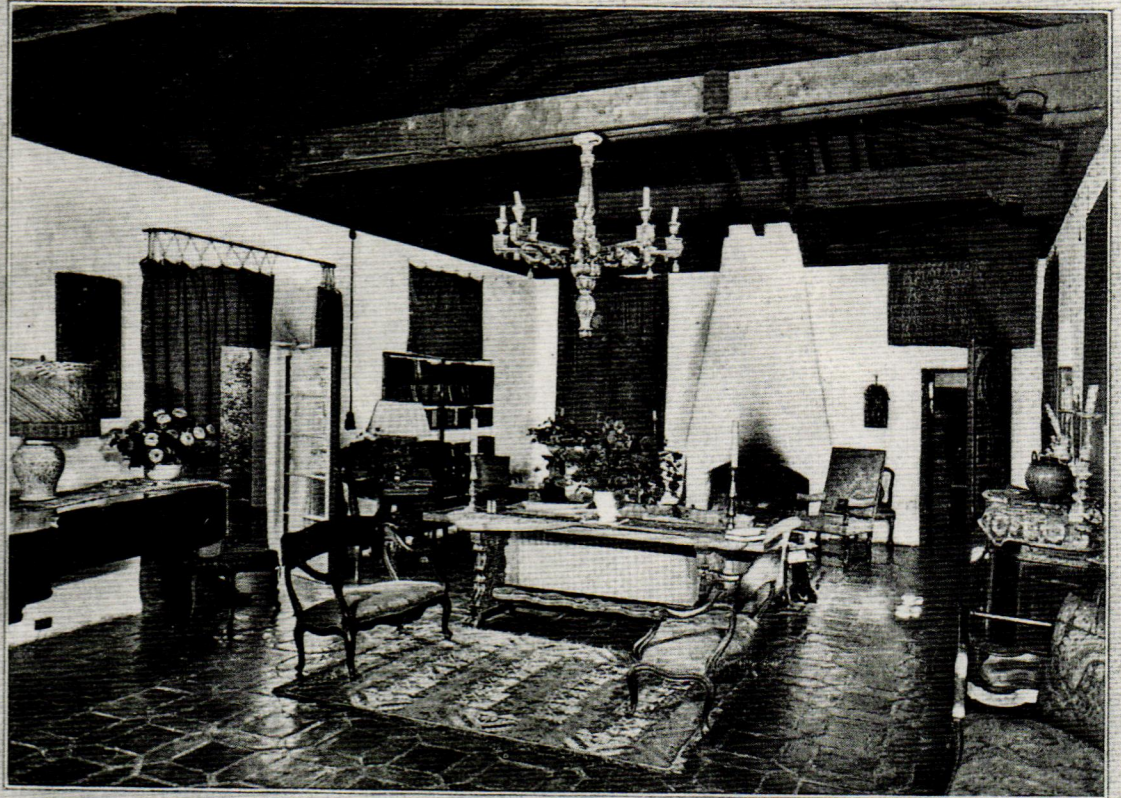
Spanish Colonial Revival



Making a fragment whole again—
reimagining a George Washington Smith house.

LEFT: The remodeled pool house has a new fireplace, barbecue, trellis, Bougainvillea, copper gutters, lighting and shutters. The hardscape and pool were also reworked with all new paving, plaster, tile, and coping. Charles White photo.

BELOW: A historic photo of George Washington Smith's design dating from 1920 shows the original furnishings. Note his use of antiques and the interior finishes, which were used as inspiration for the interior decor of the new house. Architecture and Design Collection, Art Museum, University of California Santa Barbara.



Adding a sympathetic addition to a historic house presents challenges; adding a new house to an addition presents even more. In 1919, George Washington Smith designed his first professional commission, a two-story Mediterranean revival house in Montecito, California. Over the years, the original house had been added onto, twice. Then, in 1940, the original estate was subdivided into three separate parcels, with the center addition moved to a new location. This project takes what had been the rear addition to the original house and reworks it into a single-family house referencing the work of Smith and the Spanish Colonial Revival style he was so influential in creating. Making sense of these fragments was the challenge left to Michael Burch, two-time Palladio Award winner and three-time Venice Biennale participant who has been referred to as the “greatest living practitioner of the Spanish Colonial Revival Style” (Stephen Harby, Yale & Fellow, American Academy in Rome).

George Washington Smith is often considered the “father of the Spanish Colonial Revival,” that style of architecture so prevalent in Southern California that some consider it to be the de-facto vernacular. Its overall form, based on farmhouses in the Andalusian countryside—with foundations sometimes harken back to Roman times—give rise to an architecture with a picturesque, sculptural presence in the



landscape. The details, however, are inspired by the best of the features of the royal court and castles of Mudéjar, Spain. During the 1920s and '30s the style was simply called "The Californian Style."

Its popularity in part was derived from the appropriateness of the architectural form to its environment. The indigenous forms perfected in Andalusian, Spain, over hundreds of years, were a natural fit in California. Elements of the style were often used as a design strategy for sustainability with orientation, broad overhangs, porches, deeply recessed windows and clay tile floors providing passive solar energy savings. Clay tile roofs and stucco walls similarly provided fire resistance in areas naturally prone to wild fires.

This project started with the aftermath of the subdivision of original estate. The irregularly shaped site, cut off from street frontage and accessed by a narrow driveway, lacked coherence, scale, elegance, grandeur and delight. The spatial sequence to and through the site and house were haphazard. The upper and lower sections of the site were not well connected.

To remedy these issues, a new site sequence was designed and the entire site re-landscaped. A new grand axis was created to greet visitors at the site's entry, running from the entry gate, up through the existing living room and inner courtyard. This grand axis was continued beyond the house, up a new garden stairway beside a new fountain garden, which contained an existing wall fountain of the original estate. At the top of the grand axis, a new upper fountain courtyard was created to redirect circulation to the swimming pool. The reworked swimming pool and pool house were connected on axis to the master bedroom via new garden steps and landscaped terraces. A carport was removed and a garage was created where there had been an office in the existing structure.

The house itself, was completely redesigned within the shell of the original 4,880-square-foot structure. Continuing with the new entry sequence from the exterior, the kitchen and the dining room locations were reversed, a playroom became the master suite, an office became the garage, a second bedroom was enlarged, a third bedroom created, the powder room relocated, a Laundry Room added and the Bathrooms reworked. Most of the house was taken down to bare walls or studs. Almost all finishes are new, including carved and stenciled beams, fireplace surrounds, doors, windows, floors, and vaulted ceilings.

Michael Burch sought a design consistent with Smith's work and carefully selected details, tile,

LEFT: The view of the newly established grand axis, which leads up through the site connects the entrance of the property with a view of the re-located living room and terrace. Michael Burch Architects photo.

TOP: A new lily pond off the new grand axis creates a tranquil space in one of the new outdoor garden rooms. It can be seen from the new living room terrace. Michael Burch Architects photo.

RIGHT: An existing gallery is the only portion of the existing house thought to be attributed to George Washington Smith and is used to organize all the circulation in the house. Tile, lighting, and all furnishings are new and were inspired by George Washington Smith's own designs. Charles White photo.





stenciling, and paint colors Smith had used. Light fixtures are either vintage or Smith reproductions. The furnishings are mainly antiques from Spain, Italy, and England, similar to those used by Smith in his own interior decoration. Although antiques are used, the interiors are designed for 21st-century functionality and needs.

The result of a careful reiteration of Smith's

architectural and interior design ideas, an estate that had been stripped of its character is now a coherent, integrated whole. Other architect's acknowledge Michael Burch's work—so successful was his interpretation of Smith's vision, that even prior to the project's completion, Marc Appleton held a book signing of his reprint of Smith's Sketchbook at the house. ■

A new handcrafted garden gate is painted with traditional Santa Barbara green color and is inset into a wall constructed of local stone. Details on the gate are inspired by Spanish Colonial Revival spindle cabinetry. Michael Burch Architects photo.

The Advertiser Index

To order product literature from a company listed below, go to www.period-homes.com/rs and click on the appropriate reader service number.

Historical Products Showcase

1769 Antique Drapery Rod Co. Inc.40	214-653-1733 www.antiquedraperyrod.com
2220 Architectural Grille41	800-387-6267 www.archgrille.com
477 Crown Point Cabinetry39	800-999-4994 www.crown-point.com
1756 Driwood Moulding Company40	888-245-9663 www.driwood.com
1759 Space-Pak41	413-564-5530 www.spacepak.com
8300 NIKO Contracting Co., Inc.40	412-687-1517 www.nikocontracting.com
1743 Pacific Register Company38,40	805-487-7500 www.pacificregisterco.com
5810 Reggio Register Co.40	800-880-3090 www.reggioregister.com

Columns & Capitals

1580 Chadsworth Columns42, CV2	800-486-2118 www.chadsworth.com
1516 Worthington Millwork43	800-872-1608 www.worthingtonmillwork.com

Conservatories, Greenhouses & Sunrooms

246 Country Carpenters, Inc.47	860-228-2276 www.countrycarpenters.com
1870 Glass House, LLC45	800-222-3065 www.glasshouseusa.com
378 Renaissance Conservatories45	800-882-4657 www.renaissanceconservatories.com
8270 Tanglewood Conservatories47	410-479-4700 www.tanglewoodconservatories.com

Doors, Windows, Hardware & Shutters

690 Allied Window, Inc.49	800-445-5411 www.alliedwindow.com
52 Arch Angle Window & Door50	330-723-2551 www.archangleohio.com
Architectural Components, Inc.50	413-367-9441 www.architecturalcomponentsinc.com
9600 Coppa Woodworking51	310-548-4142 www.coppawoodworking.com

2260 E.R. Butler & Co.51, CV3	212-925-3565 www.erbutler.com
909 Innerglass Window Systems50	800-743-6207 www.stormwindows.com
1611 Marvin Windows and Doors1	888-537-7828 www.marvin.com
3003 Parrett Windows & Doors5	800-541-9527 www.parrettwindows.com
1575 Pella Windows and Doors3	641-621-6272 www.pella.com
6001 Phelps Company51	603-336-6213 www.phelpscompany.com
5005 Shuttercraft, Inc.49	203-245-2608 www.shuttercraft.com
1727 Vintage Doors51	800-787-2001 www.vintagedoors.com

Period Garages & Garage Doors

1634 Fimbel Architectural Door Specialties53	908-534-1732 www.fimbelads.com
---	---

Fences & Gates

1742 Heritage Metalworks7	610-518-3999 www.heritage-metalworks.com
270 King Architectural Metals55, CV4	800-542-2379 www.kingmetals.com

Exterior Lighting

60 Authentic Designs61	800-844-9416 www.authenticdesigns.com
7660 Ball & Ball Lighting58	610-363-7330 www.ballandball.com
809 Deep Landing Workshop61	877-778-4042 www.deeplandingworkshop.com
9130 Herwig Lighting61	800-643-9523 www.herwig.com
339 House of Antique Hardware58	888-223-2545 www.houseofantiquehardware.com
267 Lantern Masters, Inc.59	818-706-1990 www.lanternmasters.com
1748 Lanternland61	855-454-5200 www.lanternland.com

Stone, Brick & Masonry

191 Gavin Historical Bricks, Inc.63	319-354-5251 www.historicalbricks.com
4020 Haddonstone (USA), Ltd.63	719-948-4554 www.haddonstone.com
3130 Old Carolina Brick Co.63	704-636-8850 www.handmadebrick.com

Call for more information.

ADVERTISING INQUIRIES

ASSOCIATE PUBLISHER

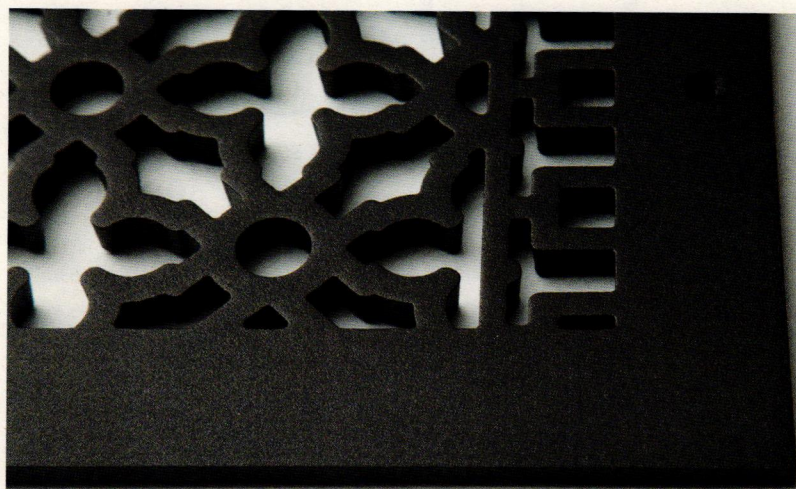
Robin Habberley
rhabberley@aimmedia.com
 703-831-6588

ADVERTISING SALES MANAGER

Jennifer Baldwin
jenbaldwin1@msn.com
 718-619-7645



OLD HOUSE JOURNAL	CABIN LIVING
ARTS & CRAFTS HOMES	LOG HOME LIVING
NEW OLD HOUSE	TIMBER HOME LIVING
EARLY HOMES	DREAM HOME SHOWCASE
DESIGN CENTER SOURCEBOOK	LOG & TIMBER HOME PLANNER
PERIOD HOMES	LOG & TIMBER HOME DESIGN GUIDE
TRADITIONAL BUILDING	
OLDHOUSEONLINE.COM	LOGHOME.COM



PACIFIC REGISTER COMPANY

Our custom decorative registers, grilles and vent covers give a home or commercial space the style, beauty & character it deserves.

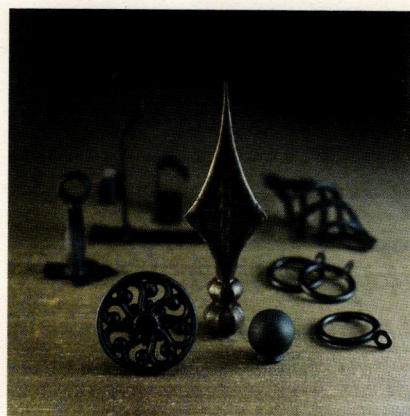
Uniquely Crafted.
American-made.
Affordable.

www.pacificregisterco.com
☒ 877-487-7500
☎ info@pacificregisterco.com



CLICK ON NO. 1743

HISTORICAL PRODUCTS SHOWCASE

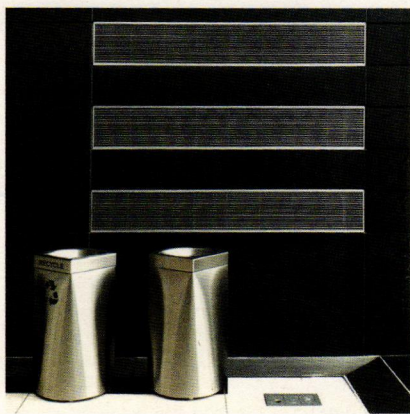


Antique Drapery Rod Co. provides these wrought iron hooks and rods; they have been used to hang heavy textiles over castle windows keeping out the cold, to hang beautiful hand woven tapestries or drape luxurious fabrics around a bed.

Antique Drapery Rod Co. Inc
214-653-1733; Fax: 214-653-1776
www.antiquedraperyrod.com
Dallas, TX 75207

U.S. made drapery hardware, many styles and options available, in stock items are able to ship next day. Eco-responsible methods are used in the manufacture; recycled materials are used in many of the components.

Click on No. 1769



Architectural Grille provides a complete array of custom grilles to meet commercial project needs.

Architectural Grille
800-387-6267; Fax: 718-832-1390
www.archgrille.com
Brooklyn, NY 11215

Supplier of grilles: custom perforated & linear bar; aluminum, brass, bronze, stainless steel & steel; variety of finishes; stock sizes; water-jet & laser cutting.

Click on No. 2220



Custom home bars are a specialty of **Crown Point Cabinetry**.

Crown Point Cabinetry
800-999-4994; Fax: 603-370-1218
www.crown-point.com
Claremont, NH 03743

Custom fabricator of handcrafted, period-style cabinetry for kitchens, baths & other rooms: Arts & Crafts, Shaker, Victorian, Early American & contemporary styles; available nationwide.

Click on No. 477

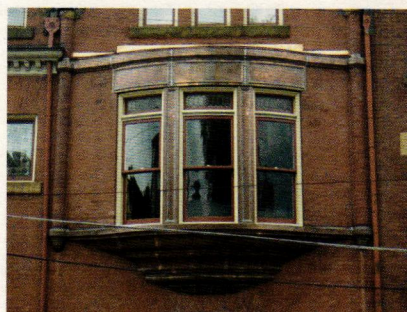
Dr Woodward Moulding Company
888-245-9663; Fax: 843-669-4874
www.driwood.com
Florence, SC 29503

Stock and custom room interiors for residential and commercial projects. Embossed moldings, raised-panel doors, mantels, bookcases, exterior and interior door surrounds, pre-fabricated raised-panel wall sections.

Click on No. 1756



4 5/8" x 9/16" Colonial era moulding piece with scroll or wave pattern over reed is one of many patterns available from **Dr Woodward**.



NIKO Contracting Co., Inc. fabricated and installed this custom copper radiused bay window surround.

NIKO Contracting Co., Inc.
412-687-1517; Fax: 412-687-7969
www.nikocontracting.com
Pittsburgh, PA 15213

Nationwide contractor, fabricator & installer of architectural sheet metal & roofing: slate, tile, metal & other roofing; ornamental ceilings, cresting, finials, cornices, cupolas, domes, steeples & snowguards.

Click on No. 8300

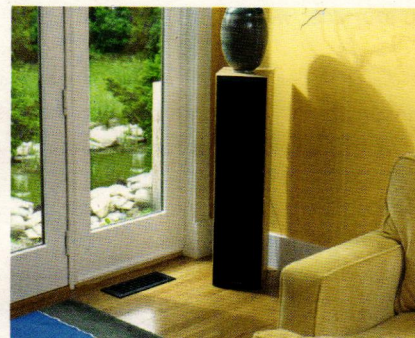
Pacific Register Company
805-487-7500; Fax: No fax
www.pacificregisterco.com
Oxnard, CA 93033

Manufacturer of registers: metal, wood & stone; many historic styles; accessories.

Click on No. 1743



Pacific Register created the decorative metalwork for this staircase.



The model G612ABNH from **The Reggio Register Co.** enhances any environment.

Reggio Register Co.
800-880-3090; Fax: 978-870-1030
www.reggioregister.com
Leominster, MA 01453

Manufacturer of decorative & functional cast-iron, brass, aluminum, steel & wood grilles: historic & contemporary designs for forced-air & high-velocity systems; large selection of sizes in stock.

Click on No. 5810



SpacePak HVAC systems utilize unique flexible ductwork and is minimally invasive to install and while protecting architectural integrity.

Space-Pak
413-564-5530; Fax: 413-568-9613
www.spacepak.com
Westfield, MA 01085

Company provides 2' flexible tubing ductwork allowing warm and cool air to reach spaces in historic buildings without disturbing architectural finishes and structure.

Click on No. 1759



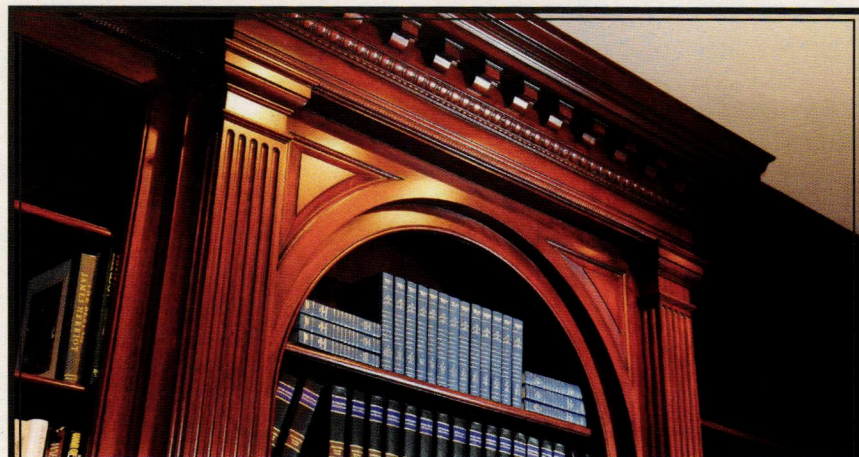
Complimentary design service
No cost job-specific client samples
No charge blanket-wrapped job site delivery

CROWNPOINT
CABINETS

www.crown-point.com • 800-999-4994

CLICK ON NO. 477

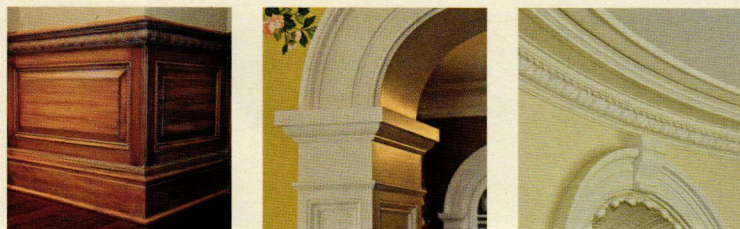
Handcrafted in New Hampshire
Available direct, nationwide
Industry leading on-time delivery



DRIWOOD

One hundred years of artistry

As craftsmen and keepers of a time-honored tradition, it's our mission to bring beauty, history, and artistry into every space we touch.



More than 500 mouldings in stock

Choose from more than 500 historically accurate in stock moulding designs, all crafted to stand alone or be used in assemblies from every period including Georgian, Federal, Victorian and mid-century modern.

Visit driwood.com today.
888-245-9663 (toll free) | sales@driwood.com

CLICK ON NO. 1756

Quality Craftsmanship Nationwide Since 1974

- ROOFING
Slate • Tile • Metal
- ARCHITECTURAL
SHEET METAL WORK
and ORNAMENTATION
- CUSTOM FABRICATION
- HISTORIC
RESTORATION
- PRESSED METAL
CEILING



For information on custom fabrication and/or installation contact:
Phone (412) 687-1517
3434 Parkview Ave., Pittsburgh, PA 15213



CLICK ON NO. 8300

When contacting these companies,
please mention that you saw them
in **Period Homes** magazine.



PREMIUM QUALITY REGISTERS & GRILLES

— AMERICAN CRAFTSMANSHIP —
Get the Finishing Touch
People Notice

Check out our newest products at
ReggioRegister.com

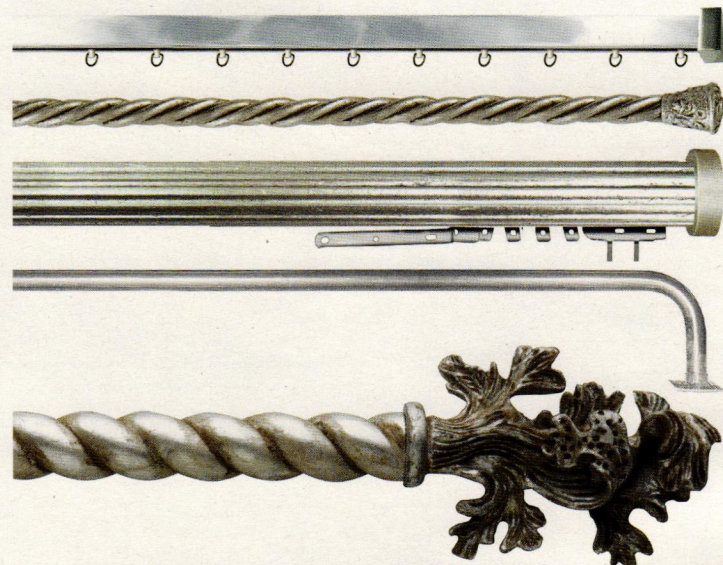


Solid Brass • Cast Iron • Aluminum • Wood

— LIFETIME GUARANTEE —

ReggioRegister.com | 844.834.9949

CLICK ON NO. 5810

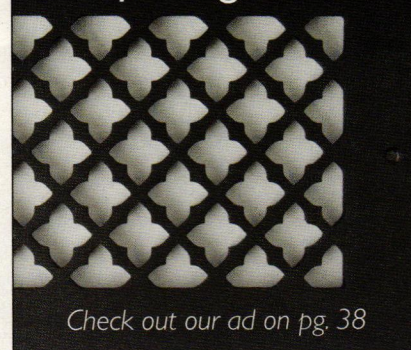


ANTIQUE DRAPERY ROD CO.

ANCIENT CRAFTSMANSHIP • MODERN INNOVATION • HAND MADE IN THE USA SINCE 1992
TO THE TRADE • SHOWROOM 1937 IRVING BLVD. DALLAS, TEXAS • ANTIQUEDRAPERYROD.COM

CLICK ON NO. 1769

Pacific Register Co.

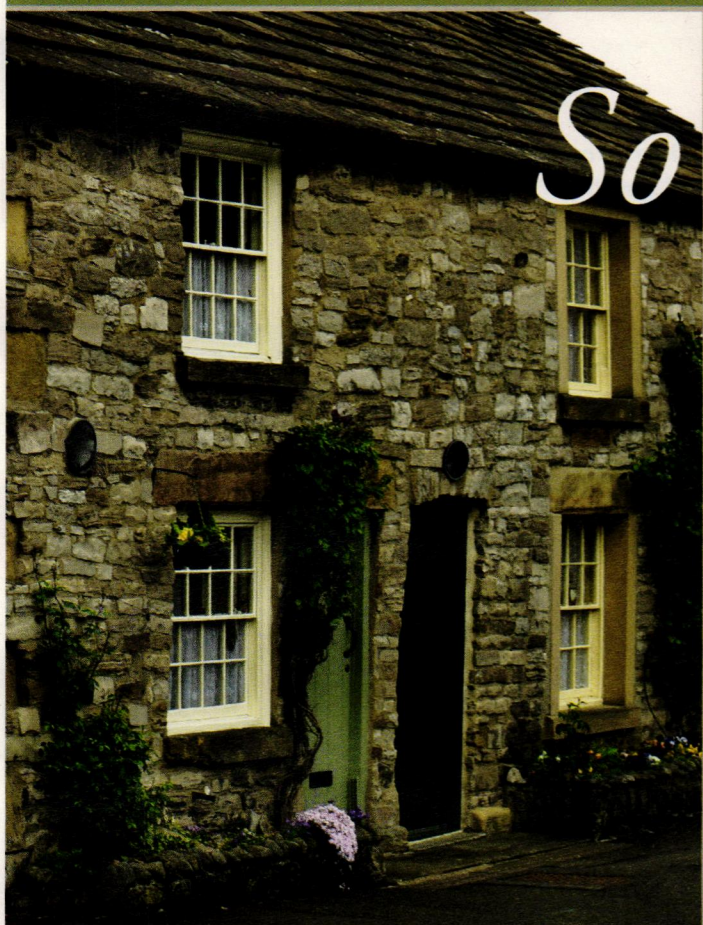


Check out our ad on pg 38

CLICK ON NO. 1743

To order free product literature from a company listed in this Buying Guide, go to period-homes.com/rs and click on the reader service number that appears at the end of its caption.

This classic home has central air



So can yours



As the innovator of small-duct central air conditioning systems, SpacePak delivers uniform, year-round comfort, with fewer of the challenges common to other central heating and air-conditioning systems. No major renovations, loss of usable floor space, high energy bills, or unsightly components; simply quiet, cost-effective comfort for virtually any home, regardless of the structure's design, age, size, or construction type.



To see what you've been missing, contact SpacePak at (800) 465-8558 or www.spacepak.com.

CLICK ON NO. 1759

TRADITIONAL PRODUCT

Galleries

The world of traditional products is wide and wonderful. Traditional Product Galleries makes finding the right items easy – and interesting.

www.traditionalproductgalleries.com

ARCHITECTURAL GRILLE
CUSTOM DESIGNED, FABRICATED AND FINISHED

shop online now

CUSTOM DESIGNS
HVAC GRILLES
METAL WORK
DECORATIVE PANELS
INTERIOR & EXTERIOR
HISTORICAL REPLICATIONS

DECORATIVE GRILLES

INTRODUCING THE

FRANK LLOYD WRIGHT.

COLLECTION

BY FRANK LLOYD WRIGHT FOUNDATION

PERFORATED GRILLES • BAR GRILLES • DECORATIVE SCREENS
info@archgrille.com 1.800.387.6267 www.archgrille.com

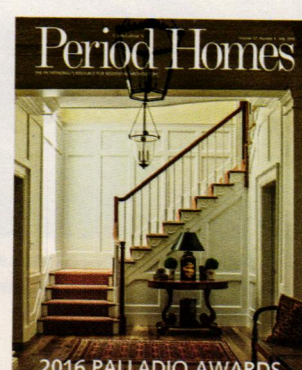
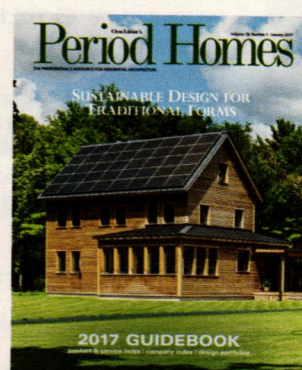
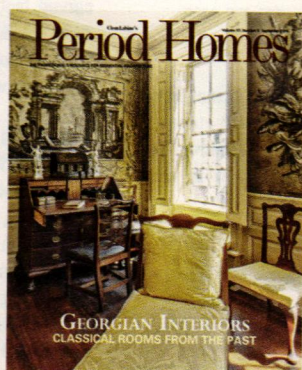
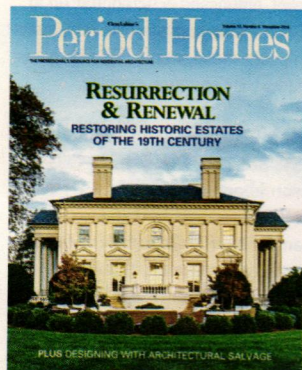
CLICK ON NO. 2220

If you'd like to order a

gift subscription

for a colleague,

just call 800-548-0148





CHADSWORTH INCORPORATED

See our Ad on the Inside Front Cover

CLICK ON NO. 1580

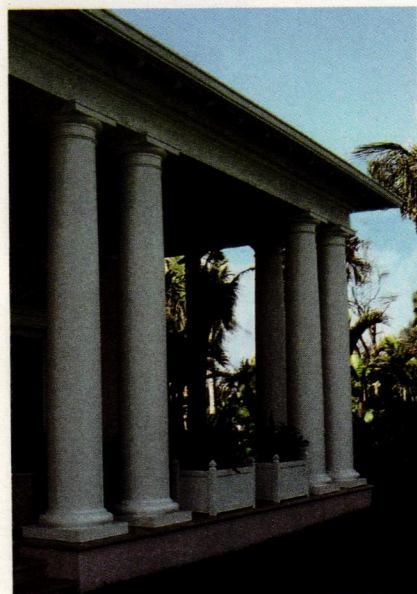
COLUMNS & CAPITALS



The fiberglass columns, cornice and balustrade for this home in Brooklyn, NY, were fabricated by Arch Fiberglass Corp.

Arch Fiberglass Corp.
631-842-4772; Fax: 631-598-1190
www.afcomice.com
Copiague, NY 11726

Reproducer of original ornamentation from a large selection of stock styles & sizes: exterior cornices, cupolas, columns & balustrades; planters & urns; lightweight, easy-to-install FRP; molded-in colors & texture; Class-1 fire-retardant material.



These Plain Authentic Replication columns with Tuscan capitals from Chadsworth Columns measure 16 in.

Chadsworth Columns
800-486-2118; Fax: 910-763-3191
www.chadsworth.com
Wilmington, NC 28402

Manufacturer of authentically correct architectural columns: complete line of columns, piers, pilasters & posts; interior & exterior; variety of sizes, styles & materials; 4 different grade levels of wood columns; interior molded ornament; millwork; shutters.
Click on No. 1580 for PolyStone; 180 for wood



Haddonstone manufactured this Classical balustrade system and urn.

Haddonstone (USA), Ltd.
719-948-4554; Fax: 719-948-4285
www.haddonstone.com
Pueblo, CO 81001

U.S. based manufacturer of landscape ornament & architectural cast stonework: planters, fountains, sundials, statues, garden furniture, balustrades, gazebos, follies, columns, porticos, doors & window surrounds, cornices, molding, mantels & more; custom components.
Click on No. 4020

Hartmann Sanders
800-468-5993; Fax: 256-442-4794
www.hartmann-sanders.com
Troy, AL 36081

Manufacturer of architectural columns & capitals: Classically correct & durable; wide range of designs; wood & fiberglass; interior & exterior.

Melton Classics, Inc.
800-963-3060; 770-963-3060; Fax: 770-962-6988
www.meltonclassics.com
Lawrenceville, GA 30042

Manufacturer of architectural elements: columns, moldings, balustrades, door & window features, cornices, porch parts, brackets, trim & more; fiberglass, polyurethane, marble/resin composite, wood, cast & synthetic stone, GRC & GRG.

To order free product literature from a company listed in this Buying Guide, go to period-homes.com/rs and click on the reader service number that appears at the end of its caption.



JUMP IN THE CONVERSATION

@PeriodHomes
@TradBuilding
@TradBldgShow

Join us on Twitter for news and views about the world of traditional building and design.



Architectural Columns & Balustrades by Melton Classics manufactured the maintenance-free MarbleTex synthetic stone balustrades and columns for this building.



This cherry column with a Roman Corinthian capital was fabricated by Pacific Columns.

Pacific Columns
800-294-1098; 714-257-9600; Fax: 714-257-9628
www.pacificcolumns.com
Brea, CA 92821

Supplier of interior & exterior columns: roped, belly, carved, high relief, embossed & octagonal; up to 36-in. dia. & 36-ft. lengths; capitals, pilasters, balustrades & porch posts; metal, wood, FRP fiberglass & polymer window trim; shutters; cupolas.

Timeless Architectural Reproductions
800-423-3311; 541-826-2911; Fax: 541-826-1393
www.timelessarchitectural.com
White City, OR 97503

Designer & manufacturer of Classically styled balustrade systems & decorative capitals & columns: lightweight, insect- & weather-resistant cultured marble, fiberglass & resin; smooth & detailed surfaces; CAD drawings & AIS specs.



This entrance features Scamozzi Decorative Capitals and architectural fluted columns from Architectural Reproductions by Timeless.



Worthington Millwork makes wood columns for interior and exterior applications.

Worthington Millwork
800-872-1606; Fax: 850-640-0488
www.worthingtonmillwork.com
Panama City Beach, FL 32413

Supplier of architecturally correct columns in wood or PermaCast round & square; clear columns in 7 species; cornice moldings, balustrades, niches, medallions, mantels, pedestals & more.
Click on No. 1516



DELIVERING QUALITY ARCHITECTURAL COLUMNS
SINCE 1985

Call 855-772-5534
to request a FREE quote or catalog



WORTHINGTON®
American Made Architectural Products

CLICK ON NO. 1516

CONSERVATORIES, GREENHOUSES & SUNROOMS



This pool house was built with a post-and-beam kit from **Country Carpenters**.

Country Carpenters, Inc.
860-228-2276; Fax: 860-228-5106
www.countrycarpenters.com
Hebron, CT 06248

Manufacturer of New England-style post-&-beam carriage houses, garden houses, sheds & country barns: pre-cut & -engineered for assembly by either the firm or a professional carpenter.

Click on No. 246



This 14x20-ft. cedar rectangular cabana is manufactured by **Fifthroom.com**.



The engineered Northern white pine beams for the roof of this Victorian conservatory from **Four Seasons Sunrooms** were used to match the house's roofline.

Four Seasons Sunrooms

631-563-4000; Fax: 631-563-4010
www.four-seasons-sunrooms.com
Holbrook, NY 11741

Manufacturer of year-round sunrooms & conservatories: 18 distinct models in many variations; aluminum, vinyl & wood; maintenance-free exteriors; exclusive Wonderglass is designed for thermal control.

Glass House, LLC

800-222-3065; Fax: 860-974-1173
www.glasshouseusa.com
Pomfret Center, CT 06259

Fabricator of traditional conservatories, greenhouses, sunrooms, pool enclosures, roof lanterns, specialty skylights & glass roof systems: mahogany or aluminum frame & copper; custom fabrication.
Click on No. 1870



Custom designed aluminum frame horticultural greenhouse provided and installed by **Glass House, LLC**. Features include automated roof and side vent, heater and circulation fans with awning windows and double door set. Many options available.



Haddonstone's orangeries are ideal for traditional homes or commercial projects, whether freestanding or connected to an existing property.

Haddonstone (USA), Ltd.

719-948-4554; Fax: 719-948-4285
www.haddonstone.com
Pueblo, CO 81001

U.S. based manufacturer of landscape ornament & architectural cast stonework: planters, fountains, sundials, statues, garden furniture, balustrades, gazebos, follies, columns, porticos, doors & window surrounds, cornices, molding, mantels & more; custom components.

Click on No. 4020

Hartley Botanic Inc.

781-933-1993; Fax: 781-933-1992
www.hartleybotanic.com
Woburn, MA 01801

Manufacturer of custom greenhouses, Hand made to order in England for over 75 years, supplying residences and horticultural institutes around the world.



The Victorian Lodge glasshouse is custom handmade by **Hartley Botanic** and features a central portico entrance.

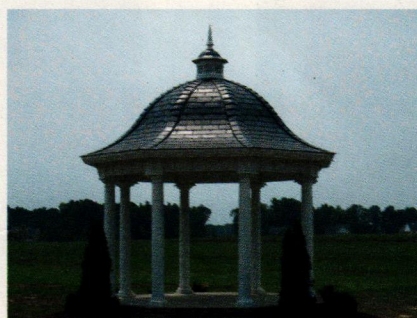


Individually commissioned conservatories from **Oak Leaf Conservatories** emphasize symmetry, appropriate scale and proportion, and feature traditional mortise-and-tenon joinery.

Oak Leaf Conservatories, Ltd.

800-360-6283; Fax: 404-250-6283
www.oakleafconservatories.com
Atlanta, GA 30327

Designer, custom fabricator & installer of authentic British conservatories, orangeries, garden rooms, roof lanterns, cupolas, lantern roofs, pool/spa enclosures & glass domes: handcrafted in England; mortise-&-tenon construction; premium-grade mahogany.



The 16-ft. Heritage Bell pavilion from **Dalton Pavilions** features a faux-slate roof and cupola.

Dalton Pavilions, Inc.

800-532-5866; Fax: 215-721-1501
www.daltonpavilions.com
Telford, PA 18969

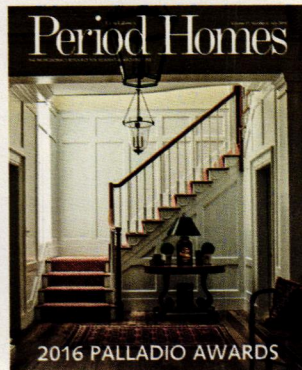
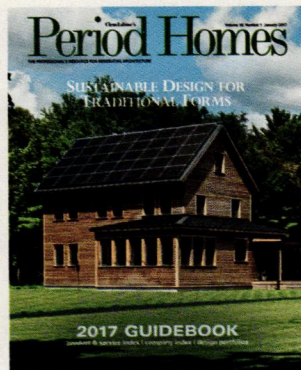
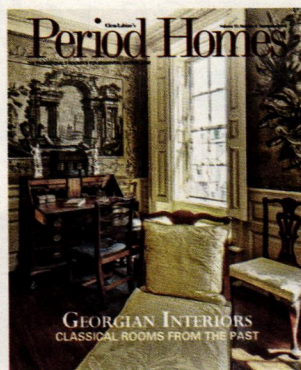
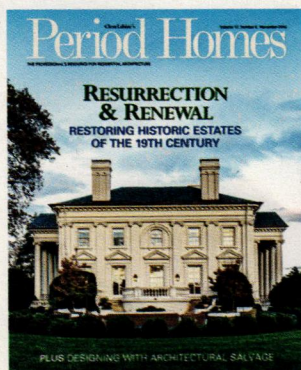
Designer & manufacturer of gazebos: several styles & sizes; western red cedar; installation services; product portfolio \$2.

Fifthroom.com

888-293-2339; Fax: 724-444-5301
www.fifthroom.com
Gibsonia, PA 15044

Supplier of indoor & outdoor furniture, landscape structures & garden specialties: arbors, gazebos, pergolas, cabanas, pool houses, patio furniture, planters & more.

If you'd like to order a
gift
subscription
for a colleague,
just call 800-548-0148





Glass House, LLC

WE DESIGN & FABRICATE

*Conservatories • Solariums • Horticulture Greenhouses
Pool Enclosures • Glass Roof Systems • Specialty Skylights*

800.222.3065 sales@glasshouseusa.com



Quality Made in the USA POMFRET, CT

www.glasshouseusa.com

CLICK ON NO. 1870

DISCOVER THE
Renaissance Lifestyle



RENAISSANCE CONSERVATORIES

Every Room Is An American Original



Call for your Complimentary Copy
of our Architect's Design Guide

800-882-4657

www.RenaissanceConservatories.com



CLICK ON NO. 378

*When contacting these companies,
please mention that you saw them
in **Period Homes** magazine.*



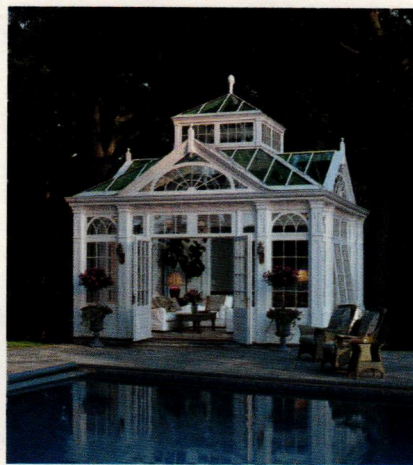
This conservatory from **Renaissance Conservatories** is topped with a traditionally styled roof lantern.

Renaissance Conservatories
800-882-4657; Fax: 717-661-7727
www.renaissanceconservatories.com
Leola, PA 17540

Custom fabricator & installer of traditional conservatories, sunrooms, greenhouses, skylights, roof lanterns, garden houses, pool enclosures & garden windows: handcrafted mahogany & cedar components.

Click on No. 378

Solar Innovations, Inc.
570-915-1500; Fax: 570-915-6083
www.solarinnovations.com
Pine Grove, PA 17963
Designer, fabricator & installer of aluminum & wood glazed structures: skylights, sunrooms, greenhouses, conservatories & pool & spa enclosures; folding, tilting, sliding & stacking doors, walls, windows & screens; walkways, canopies, gutters, finials & more; HIC # PA051151.



Nineteenth-century styling creates a unique ambience for this conservatory that was designed and fabricated by **Tanglewood**.

Tanglewood Conservatories
410-479-4700; Fax: 410-479-4797
www.tanglewoodconservatories.com
Denton, MD 21629

Designer & manufacturer of handcrafted conservatories, greenhouses, gazebos, storefronts, roof lanterns, domes, cupolas & pool enclosures: Honduras mahogany; custom designs; fully engineered.

Click on No. 8270



Town & Country Conservatories creates pool and garden houses in aluminum, hardwood and custom combinations.

Town & Country Conservatories
773-281-1212; Fax: 773-281-2234
www.townandcountryus.com
Chicago, IL 60613

Designer & builder of high-quality custom English conservatories, orangeries, garden houses, greenhouses, roof lanterns & swimming pool enclosures: in premium hardwood or extruded aluminum; extensive photo tour; design & planning guide.

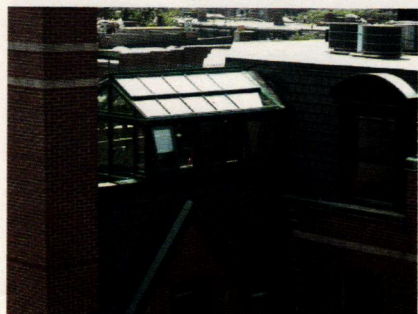
Under Glass Mfg. Corp.
845-687-4700; Fax: 845-687-4957
www.underglassusa.com
High Falls, NY 12440

Manufacturer of Lord & Burnham line of conservatories, greenhouses, sunrooms, solariums & kits: aluminum & glass; custom & standard designs.



Under Glass Mfg. Corp. constructed this aluminum and glass Lord & Burnham pool house.

To order free product literature from a company listed in this Buying Guide, go to period-homes.com/rs and click on the reader service number that appears at the end of its caption.



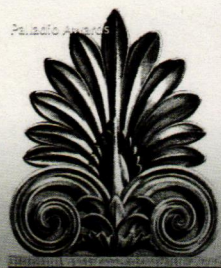
This straight-eave double-pitch conservatory from **Solar Innovations** incorporates decorative elements, including radius grid, ridge cresting, molding and finials.

Period Homes
THE PROFESSIONAL'S RESOURCE FOR RESIDENTIAL ARCHITECTURE

Traditional Building Conference
July 18-19 in Salem, MA

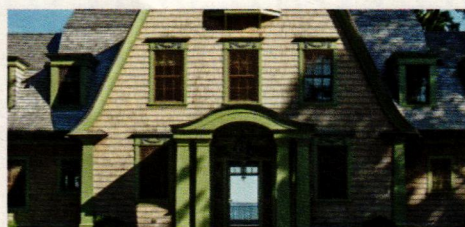
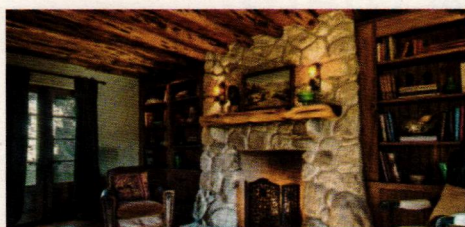
Period Homes
Buying Guides
Browse Our BUYING GUIDES

Buying Guides The Magazine Projects Profiles Features Product Reports Palladio Awards Subscribe



2017

The 2017 Palladio Awards



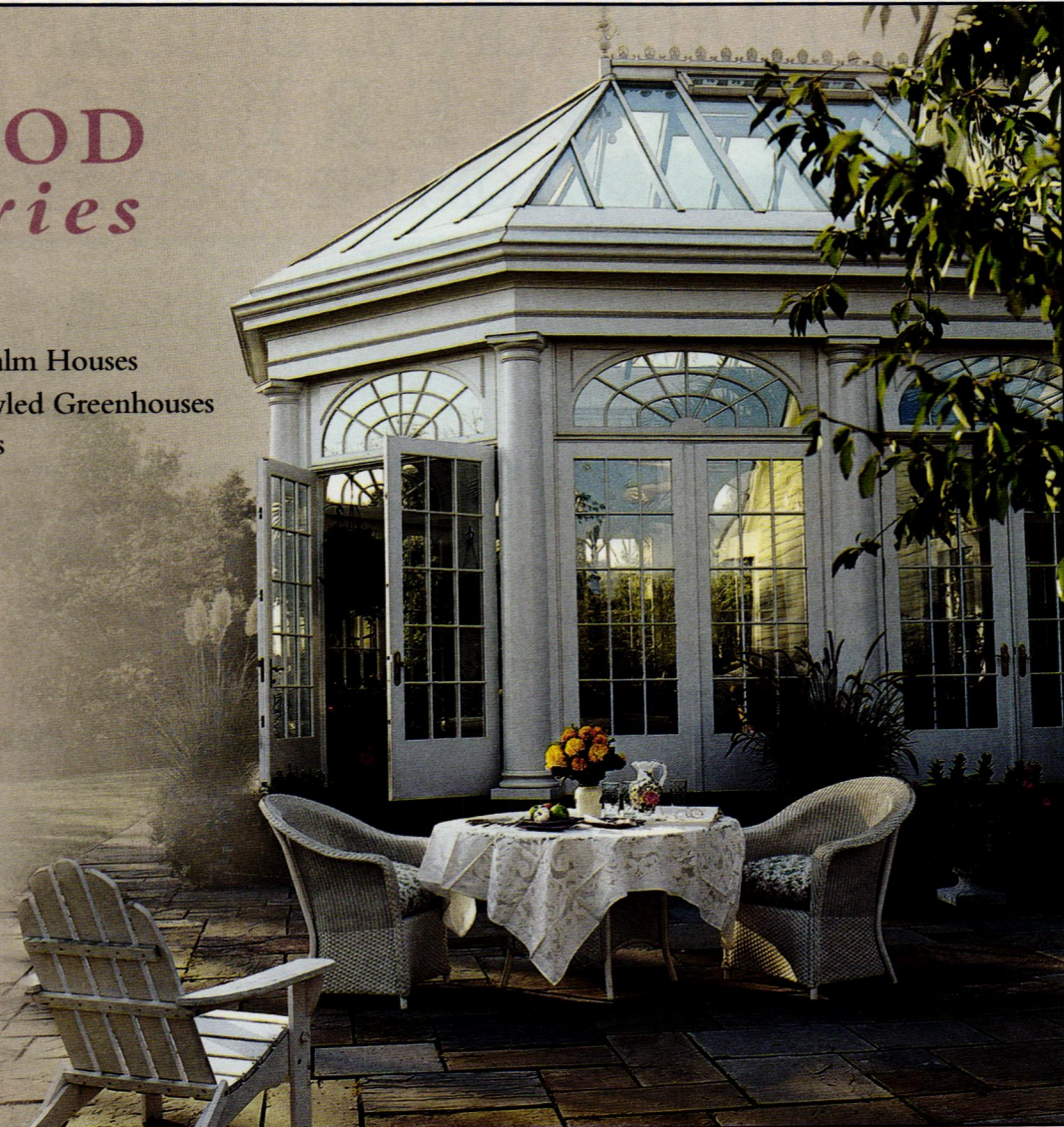
Visit the newly updated
Period-Homes.com
today for the latest residential projects, profiles, and our exclusive online Buying Guides

TANGLEWOOD Conservatories

- Botanical & Palm Houses
- Old-World Styled Greenhouses
- Conservatories

anything else...is just another room

www.tanglewoodconservatories.com
800 229 2925



CLICK ON NO. 8270

JUMP IN THE CONVERSATION



@PeriodHomes

@TradBuilding

@TradBldgShow

Join us on Twitter for news and views about the world of traditional building and design.

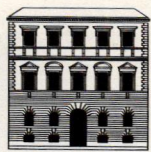
Helping People Build Beautiful
Country Places Since 1974!

Models on Display

Fine POST & BEAM Carriage Houses,
Garden Sheds & Country Barns, Shipped Nationwide
326 Gilead St. Hebron, CT 06248 www.countrycarpenters.com 860.228.2276

CLICK ON NO. 246

*When contacting these companies,
please mention that you saw them
in **Period Homes** magazine.*



TRADITIONAL BUILDING CONFERENCE

ONLINE EDUCATION

OPPORTUNITIES TO LEARN NEVER STOP
with the Traditional Building Conference's Online Seminars!

Join us for a new series of free webinars on the best practices and products for historic restoration and traditional building. Talk to and learn from the industry experts and leading practitioners through your computer or mobile device. Acquire new skills and evaluate products from the convenience of your computer.

ALL FOR FREE!

PROPERTIES AND PERFORMANCE OF VACUUM INSULATED GLAZING

1 AIA HSW Learning Unit

Speaker:

Kyle Sword, Pilkington North America



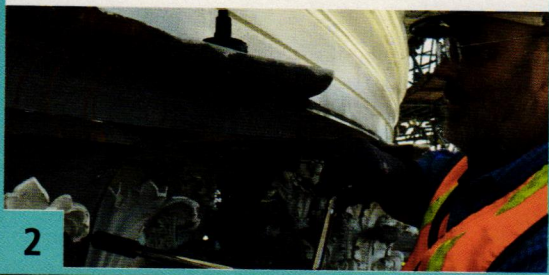
1

BRONZE, CAST IRON, AND CAST ALUMINUM: PROPERTIES, PRESERVATION, AND PERFORMANCE

1 AIA HSW Learning Unit

Speaker:

Robert Baird, Historical Arts and Casting



2

A SUSTAINABLE TRADITION: STORM WINDOWS

1 AIA HSW Learning Unit

Speaker:

David Martin, President, Allied Window, Inc., Cincinnati, OH



3

HISTORIC CLAY ROOF TILE - WHY AND HOW TO USE IT SUCCESSFULLY

1.25 AIA HSW Learning Unit

Speaker:

Tab Colbert, CEO, Ludowici, New Lexington, OH



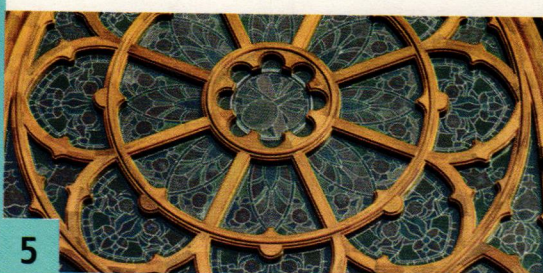
4

TRADITIONAL WINDOWS & HISTORIC SETTINGS: DETAILS DETAILS DETAILS

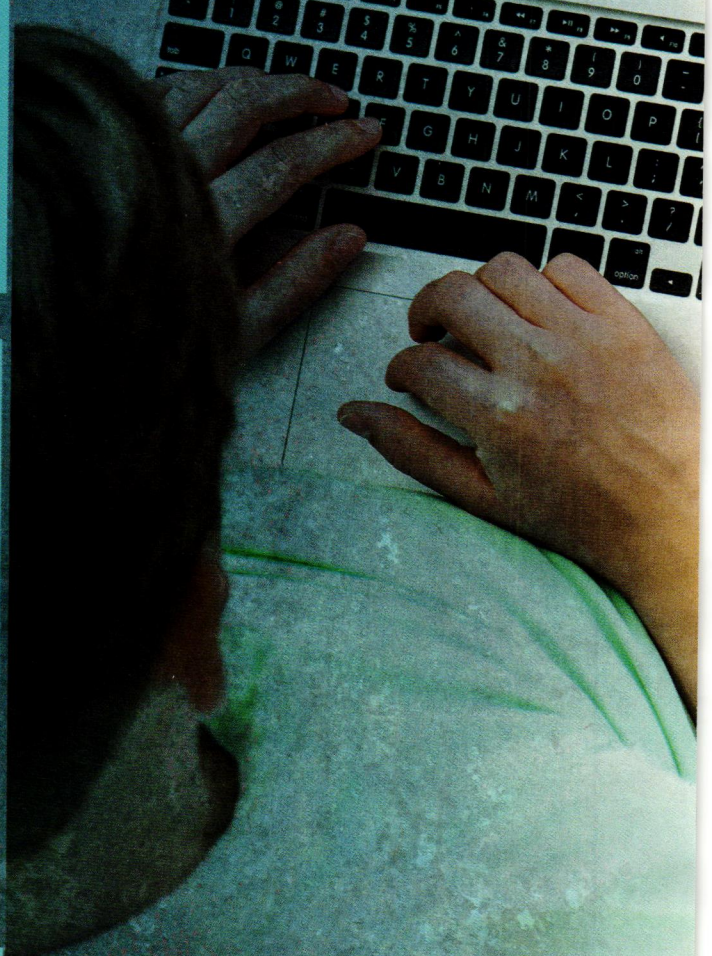
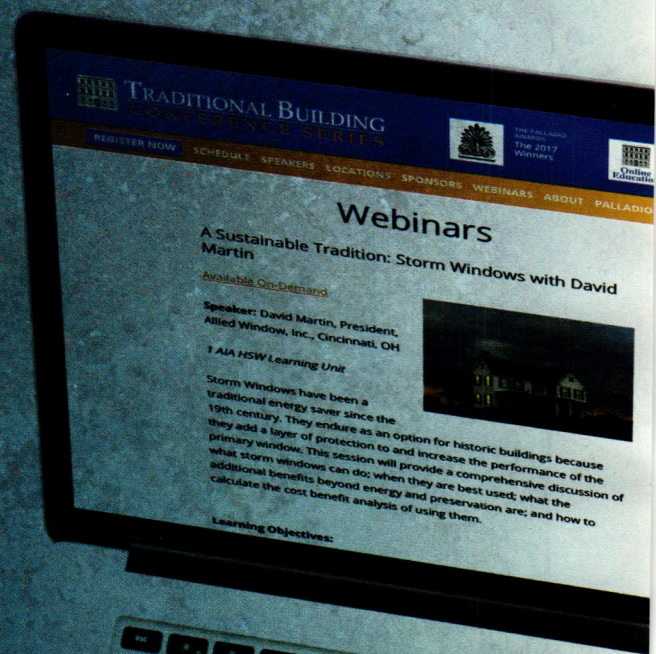
1 AIA HSW Learning Unit

Speakers:

Steve Lien, CSI, AIA, Marvin Windows and Doors



5



ONLINE EDUCATION

Keep current with new
live and on-demand
webinars by visiting [www.traditionalbuildingshow.com/
page/webinars](http://www.traditionalbuildingshow.com/page/webinars)

TRADITIONALBUILDINGSHOW.COM



ALLIED WINDOW, INC.

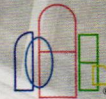
CUSTOM

"Invisible" Storm Windows®



Allied Window has a strong commitment to high quality custom storm windows & the capability to meet the needs of any home or other building with single glass.

Interior & Exterior Windows
 Custom Colors,
 Custom Screens & Special Shapes
 Historic, Residential &
 Commercial Buildings
 Energy Savings—Approximately 50%
 Sound Reduction—Up to 50%



11111 Canal Road, Cincinnati, Ohio 45241 www.alliedwindow.com • 800.445.5411 • fax: 513.559.1883

CLICK ON NO. 690

DOORS, WINDOWS, HARDWARE & SHUTTERS



Advanced Building Products provides custom window walls for a variety of applications.

**Advanced Building Products, Inc. -
Curtain Window Walls**

800-882-4657; Fax: 717-661-7727

www.renaissanceconservatories.com

Leola, PA 17540

Advanced Building Products, Inc., a division of Renaissance Conservatories, manufactures and installs custom curtain window walls, doors, and entryways.

Call for more information

To order free product literature from a company listed in this Buying Guide, go to period-homes.com/rs and click on the reader service number that appears at the end of its caption.



The Operating Magnetic-One-Lite window, model MOL-OP from **Allied Window**, is a bottom-operable unit with the option of an exterior half or full screen.

Allied Window, Inc.

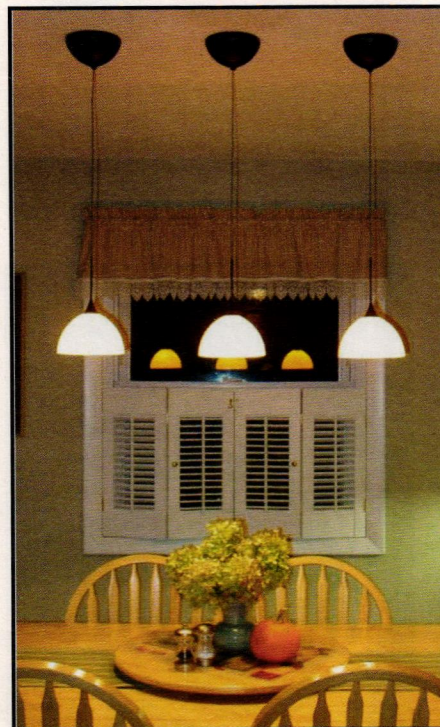
800-445-5411; Fax: 513-559-1883

www.alliedwindow.com

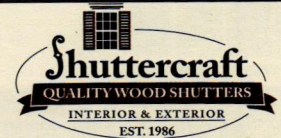
Cincinnati, OH 45241

Manufacturer of "invisible" interior/exterior aluminum storm windows: all custom shapes & colors; screens; magnetic, sliding, lift-out & mechanical fastenings; UV-resistant, low-E, tempered, acrylic & lexan glazing.

Click on No. 690



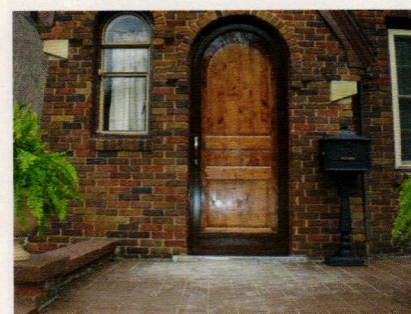
CLICK ON NO. 5005



**Interior & Exterior
custom wood shutters
in all types and sizes,
including**

**Hard-To-Find
Traditional Interior
Moveable Louvers
Call (203) 245-2608**

www.shuttercraft.com



Arch Angle Window & Door manufactured these traditionally styled storm doors.

Arch Angle Window & Door

330-723-2551; Fax: 330-722-4389

www.archangleohio.com

Medina, OH 44256

Custom fabricator of special shape aluminum storm doors, windows & screens: round top, arch top, Cathedral & Gothic designs; tempered & low-E glass.

Click on No. 52



Architectural Components supplied custom true-divided-lite windows and doors with insulated glass for this Shingle-style home on Martha's Vineyard. Call for more information.

Architectural Components, Inc.

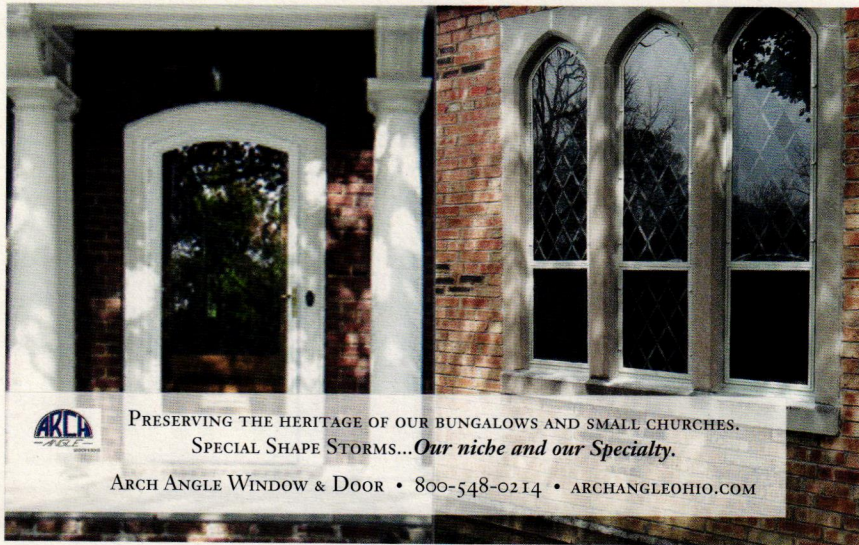
413-367-9441; Fax: 413-367-9461


www.architecturalcomponentsinc.com

Montague, MA 01351

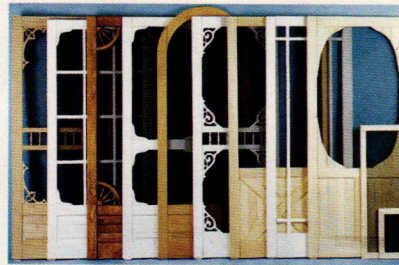
Custom fabricator of wood windows & doors: traditional details, materials & joinery; paneled, carved, louvered, French, pocket & art-glass doors; complete entryways; screen & storm doors; casings & moldings; mantels; replications.

Call for more information




PRESERVING THE HERITAGE OF OUR BUNGALOWS AND SMALL CHURCHES.
SPECIAL SHAPE STORMS...Our niche and our Specialty.
 ARCH ANGLE WINDOW & DOOR • 800-548-0214 • ARCHANGLEOHIO.COM

CLICK ON NO. 52



Coppa Woodworking offers more than 165 screen door styles manufactured in pine, Douglas fir, oak, mahogany, cedar and redwood.

Coppa Woodworking
 310-548-4142; Fax: 310-548-6740
www.coppawoodworking.com
 San Pedro, CA 90731

Manufacturer of wood screen & storm doors: more than 300 styles; custom sizes, several wood types & multiple finishes; arch tops, dog doors, wood window screens & storm windows.


Click on No. 9600



This hand-forged, iron Fox Door Pull (also available in thumb latch), from **Heritage Metalworks**, shows off exquisite detail.



Infrared Proof!



Save Energy and your Historic Windows

10 Minute Install / 10 Seconds In / 10 Seconds Out

Innerglass® Window Systems, LLC
 The Compression-Fit Advantage

stormwindows.com • 800.743.6207

CLICK ON NO. 909



This elegant exterior entry was fabricated by **Driwood**.

Driwood Moulding Company
 888-245-9663; Fax: 843-669-4874
www.driwood.com
 Florence, SC 29503

Stock and custom room interiors for residential and commercial projects. Embossed moldings, raised-panel doors, mantels, bookcases, exterior and interior door surrounds, pre-fabricated raised-panel wall sections.

Click on No. 1756



This traditional door set and steeple-tip door hinge are available from **House of Antique Hardware** in nine finishes.

E.R. Butler & Co.
 212-925-3565; Fax: 212-925-3305
www.erbutler.com
 New York, NY 10012

Manufacturer of Early American door, window & furniture hardware: 19th-century shell-shanked crystal, porcelain & wood trimmings; brass, bronze, nickel-silver & wrought iron; custom-plated & -patinated finishes; restoration work.

Click on No. 2260

Heritage Metalworks
 610-518-3999; Fax: 610-518-7264
www.heritage-metalworks.com
 Downingtown, PA 19335

Atelier of skilled blacksmiths & craftsmen: exclusively to trade; lighting, hardware, gates & railings; custom & signature lines available in iron, brass, bronze, copper, nickel, zinc & stainless steel.

Click on No. 1742

House of Antique Hardware
 888-223-2545; Fax: 503-233-1312
www.houseofantiquehardware.com
 Portland, OR 97232

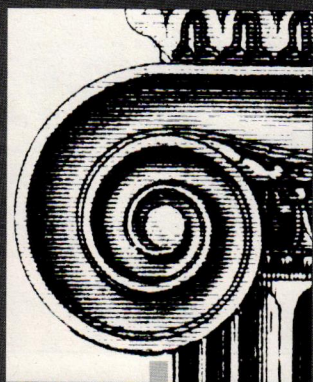
Supplier of door, window, cabinet, furniture, electrical & bath hardware: original antique & vintage reproductions; Federal, Victorian & Arts & Crafts styles; hardware specialists available to assist with renovation projects.

Click on No. 339




These Traditional OM Series Shutter Knobs from **E.R. Butler's** W.C. Vaughan Co. Collection are available in 1 1/4 inch sizes (Nominal) for Surface Mounting. Solid Turned Brass Knob. Standard, Custom Plated and Patinated Finishes Available.

period-homes.com



Surf the Industry

Online data & links
 for hundreds of
 of products & services
 for restoration, renovation
 and historically inspired
 new construction for civic
 & commercial projects.

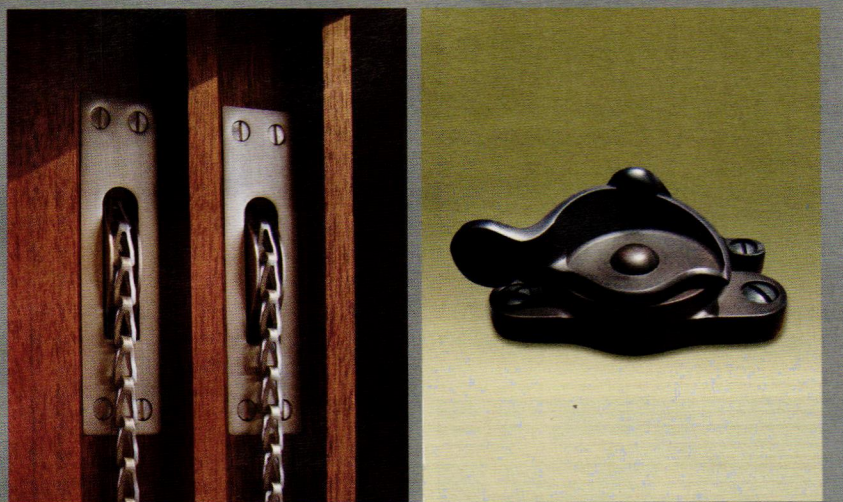


ARCHITECTURAL COMPONENTS

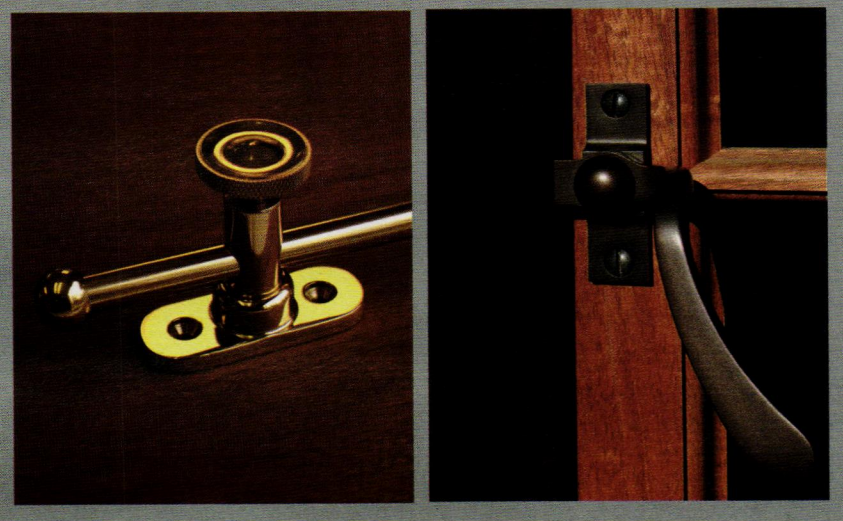
Finely Crafted Reproduction and Custom Windows, Doors & Architectural Millwork

413-367-9441
architecturalcomponentsinc.com





www.phelpscompany.com



CLICK ON NO. 6001



Visit...
WWW.VINTAGEDOORS.COM
...For even more inspiration!

DISTINCTIVE SOLID WOOD DOORS FOR YOUR HOME
Handmade by our craftsmen in any size, design and wood!

*Screen & Storm Doors - Entrance Units - Interior Doors
Dutch - French - Louver - Three Season Porches & More...*

FOR CATALOG OR QUOTE, CALL: 1 (800) 787-2001



CLICK ON NO. 1727

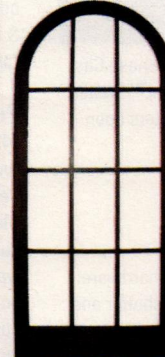


E. R. BUTLER & Co.
MANUFACTURERS.

*See Our Ad
On the Inside Back Cover*

WWW.ERBUTLER.COM

CLICK ON NO. 2260



Made in the USA
Over 300 Styles
Custom Designs
Any Size
And So Much More!

COPPA WOODWORKING, INC.
(310) 548-4142 www.coppawoodworking.com

**WOOD SCREEN DOORS
& STORM DOORS**

CLICK ON NO. 9600



Indow's custom designed interior storm windows can be made to fit any size and configuration.

Indow
503-284-2260; Fax: 503-284-2261
www.indowwindows.com
Portland, OR 97227

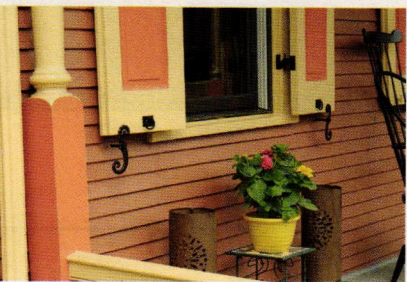
Manufacturer of handcrafted acrylic interior storms: edged in Compression Tube that press into place without a track or magnetic system to preserve historic windows while creating comfort, energy efficiency, savings & noise reduction; laser-measured for out-of-square openings; for residential & commercial projects.



Glass interior storm windows from **Innerglass Window Systems** solved the draft problems for these windows.

Innerglass Window Systems
800-743-6207; Fax: 860-651-4789
www.stormwindows.com
Simsbury, CT 06070

Manufacturer of custom glass interior storm windows for energy conservation & soundproofing; maintains the integrity of historic windows; conforms to opening; do-it-yourself installation.
Click on No. 909



The **John Wright Company** makes these Cast Iron Scroll Shutter Dogs, WeatherWright™ Coated Dogs (tiebacks or holdbacks) hold shutters open.

John Wright Company
717-252-4442; Fax: 717-252-3392
www.jwright.com
Wrightsville, PA 17368

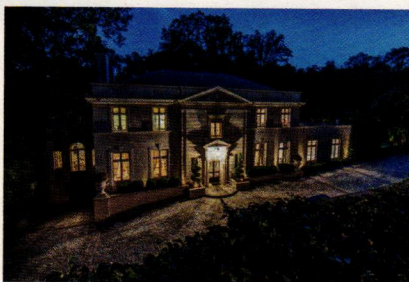
Manufacturer of reproduction building hardware: cast iron & forged steel; specializes in shutter and window hardware; for fine renovation & quality new construction; since 1880.



The Ultimate Outswing French Door is one of many traditionally styled doors available from **Marvin Windows and Doors**.

Marvin Windows and Doors
888-537-7828; Fax: 651-452-3074
www.marvin.com
Warroad, MN 56763

Manufacturer of all-wood & clad-wood windows & doors: round top, oval, casement & double hung; custom shapes & historic window replication; dual durometer, bulb & leaf weather stripping; storm windows; numerous design choices & glazing options.
Click on No. 1611



Parrett Windows & Doors offers a wide selection of historical windows and screens.

Parrett Windows & Doors
800-541-9527; Fax: 877-238-2452
www.parrettwindows.com
Dorchester, WI 54425

Nationwide manufacturer of custom wood & aluminum-clad windows & doors: durable products built to specification; period specific, historic replication or standard profiles & designs. any geometric shape, numerous wood species & complete finishing capabilities; historical replications; custom wood doors in numerous species with complete finishing options; screen doors, casings & moldings.
Click on No. 3003

Pella Windows and Doors
641-621-6272; Fax: 641-621-3466
www.pella.com
Pella, IA 50219

Manufacturer of windows & doors: wood, aluminum-clad wood, fiberglass, & vinyl; variety of wood types; renovation & new construction; experience on National Park Service projects; standard and custom sizes, shapes, colors, styles, muntin patterns, and exterior casings/brickmolds; many glass and hardware options; high transparency screens, wide variety of installation systems, local representation & service.
Click on No. 1575



Pella's new Architect Series Reserve windows were used for this project by LDa Architecture & Interiors. (Photo: Michael J Lee Photography)



Phelps Company provides sash pulleys, sash chain and other hardware to many of the high end custom window manufacturers in North America. All of the hardware they manufacture is kept in stock in five different finishes for quick shipment.

Phelps Company
603-336-6213; Fax: 603-336-6085
www.phelpscompany.com
Hinsdale, NH 03451

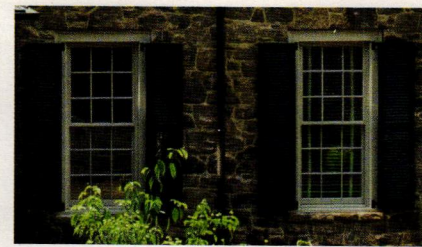
Manufacturer & designer of traditional, hot-forged solid-brass window hardware: sash pulleys, weights, chains & cords, sash locks & lifts, case-ment stays & fasteners, storm/screen hangers, bronze screen wire & screen-door latch sets.
Click on No. 6001



Shuttercraft supplied and installed these shutters with a sailboat cutout.

Shuttercraft, Inc.
203-245-2608; Fax: 203-245-5969
www.shuttercraft.com
Madison, CT 06443

Manufacturer of mortise-&-tenon wood shutters: cedar & mahogany exterior movable & fixed louver, board & batten & raised panel; cutouts, capping, arches & more; authentic mounting hardware; interior louvers, Colonial panels & open frame; full painting services; shutters all made in the U.S.; family owned & operated; shipped nationwide since 1986.
Click on No. 5005



Timberlane produced 10 fixed-louver custom exterior shutters and hardware for the 2015 Southern Living Idea House in Charlottesville, VA.

Timberlane, Inc.
215-616-0600; Fax: 215-616-0749
www.timberlane.com
Montgomeryville, PA 18936

Custom manufacturer of handcrafted custom exterior shutters: maintenance-free Endurian, Premium Wood, Advantage & Fundamentals lines; western red cedar & Honduras mahogany; selection of period-accurate exterior shutter hardware; historically accurate standard designs.



This old-fashioned screen and storm door is available from **Vintage Doors**.

Vintage Doors
800-787-2001; Fax: 315-324-6531
www.vintagedoors.com
Hammond, NY 13646

Custom manufacturer of authentic solid wood doors: handcrafted by expert craftsmen in any design, size & shape; entrance doors; interior doors; Dutch doors; screen & storm doors; three-season porch panels; pet doors & gates; garden gates & much more; proudly made in USA; nationwide delivery.
Click on No. 1727

To order free product literature from a company listed in this Buying Guide, go to period-homes.com/rs and click on the reader service number that appears at the end of its caption.

TRADITIONAL PRODUCT

Galleries

www.traditionalproductgalleries.com

The world of traditional products is wide and wonderful. Traditional Product Galleries makes finding the right items easy – and interesting.



PHOTO: Presidential model PR-12-A Jefferson

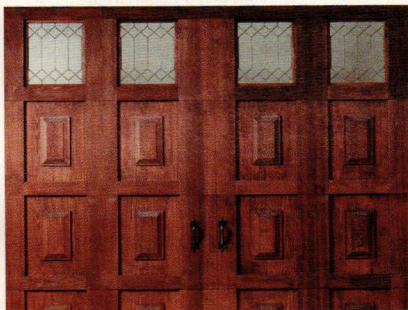
CLICK ON NO. 1634



**Fine Carriage House,
Architectural Residential/
Commercial, and Custom
Application Overhead Doors**

(908) 534-1732, ext 21
E: bird@fimbelads.com
www.fimbelads.com

PERIOD GARAGES & PERIOD GARAGE DOORS



This western red cedar garage door from **Amarr Garage Doors** was mounted on a 2-in.-thick steel door.

Amarr Garage Doors

800-503-DOOR

www.amarr.com

Lawrence, KS 66046

Manufacturer of sectional garage doors: Classica Collection steel carriage house doors & custom wood Biltmore Estate For Your Home doors.

Carriage House Door Company

866-890-1776; Fax: 916-446-7783

www.carriagedoor.com

Sacramento, CA 95838

Custom fabricator of wood & steel garage doors in traditional styles: decorative garage-door hardware.



Designer Doors hand crafted the custom garage doors for this Victorian home.

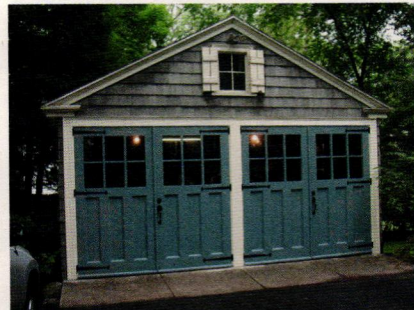
Designer Doors

800-241-0525; Fax: 715-426-4999

www.designerdoos.com

River Falls, WI 54022

Manufacturer of handcrafted garage doors & complementary entryways, walk-through doors, shutters & garden gates: western red cedar, mahogany & other species; specialty glass, decorative hardware, metals, stone & other materials; each project is built to the company's Architectural Harmony™ standards.



Evergreen Carriage Doors fabricated these traditional garage doors with true divided lites.

Evergreen Carriage Doors, LLC

800-654-0750; Fax: 253-857-4101

www.evergreencarriagedoors.com

Stevensville, MT 59870

Manufacturer of out-swing garage doors, carriage-house doors & matching wood entry doors.



Shown here is from the collection "Roaring Twenties" RT12-A Yonkers with V grooves and a 16 lite traditional arched top. Unfinished Versatex with decorative handles, no finishing necessary available from **Fimbel Architectural Door Specialties**.

Fimbel Architectural Door Specialties

908-534-1732; Fax: 908-534-9259

www.fimbelads.com

Whitehouse, NJ 08888

Manufacturer of garage & carriage-house doors: odd heights and widths in 1-inch increments, extensive standard color palette and custom finishing, commercial and residential sizes are all available. Almost unlimited customization capabilities in regard to design in most models.

Click on No. 1634



This garage door was fabricated by **Hahn's Woodworking** in western red cedar.

Hahn's Woodworking Co., Inc.

908-722-2742; Fax: 908-722-2736

www.hahnswoodworking.com

Branchburg, NJ 08876

Manufacturer of wood garage & carriage-house doors & traditional out-swing & sliding barn doors: historic restorations, custom interior & exterior doors.

Holmes Garage Door

800-557-0488; Fax: 253-939-8508

www.holmesgaragedoor.com

Troy, OH 45373

Complete line of standard or custom handcrafted wood garage doors; can meet most any architectural need, including historic-preservation projects; "Carriage House" line look like swing type doors but have sectional operation.



These Arts and Crafts carriage doors were manufactured by the **Real Carriage Door Company**.

Real Carriage Door Company

800-694-5977; Fax: 253-857-9295

www.realcarriagedoors.com

Gig Harbor, WA 98329

Custom fabricator of traditionally styled garage doors: out-swing & sliding; Craftsman Traditional, Classic, Studio & Green lines; entry doors to match; Pacific Northwest wood.

Windsor Door

501-753-1537; Fax: 501-221-3368

www.windsordoor.com

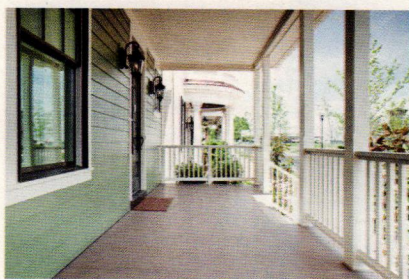
Little Rock, AR 72209

Manufacturer for over 50 years of steel & custom-crafted wood garage doors: insulated & non-insulated steel doors; sectional overhead operating; garage door operators.

*When contacting these companies, please mention that you saw them in **Period Homes** magazine.*

To order free product literature from a company listed in this Buying Guide, go to period-homes.com/rs and click on the reader service number that appears at the end of its caption.

PORCHES, DECKS & DECK PARTS



Aeratis solid PVC tongue-and-groove porch flooring was chosen for this home due to its durability and ability to hold paint colors and still maintain its warranty—and it is the only product that maintains its warranty when installed in a waterproof application

Aeratis Porch Products

888-676-2683; Fax: 480-907-1124

www.aeratis.com

Chandler, AZ 85248

Aeratis Traditions solid PVC tongue-and-groove porch flooring is a paint ready alternative to wood decking. The flooring is highly durable and has the ability to hold paint colors as dark as black and still maintain its warranty—and it is the only product that maintains its warranty when installed in a waterproof application. Repainting cycles are typically every 7 to 10 years in high traffic areas. It is also warranted against expansion and contraction.



AZEK provided the trim for the porch of this residence in California.

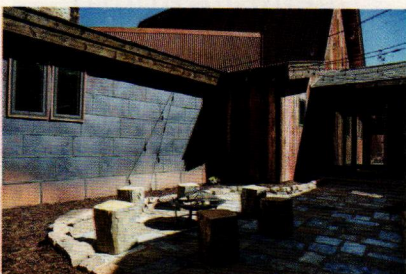
AZEK Building Products Inc.

877-275-2935; Fax: 570-504-1215

www.azek.com

Scranton, PA 18504

Manufacturer of low-maintenance exterior building products: AZEK Trim, AZEK Mouldings, AZEK Deck, AZEK Rail, AZEK Porch & AZEK Pavers.



Carlson's Barnwood provided the wood for this home including the porch area.

Carlson's Barnwood Co.

309-522-5550; Fax: 309-522-5123

www.carlsonsbarnwood.com

Cambridge, IL 61238

Supplier of recycled barn-wood planks, re-milled antique flooring, dimensional lumber & timbers in various shades & types: cupolas, porch poles, siding, milled & barn lumber, flooring & paneling in pine & oak.

Century Porch Post

866-277-9997; 519-855-6330; Fax: 519-855-9693

www.centuryporchpost.com

Hillsburgh, Ont., CANA, DA N0B 1Z0

Custom fabricator & manufacturer of porch posts, Tuscan-styled columns, newel posts, railings in solid wood.



Porch products are available from **HB&G** in polyurethane, FRP, pine and redwood.

HB&G

800-264-4424; Fax: 334-566-4629

www.hbgcolumns.com

Troy, AL 36081

Manufacturer of PermaPorch system: load-bearing PermaCast columns, PermaWrap columns, grand balustrade systems, PermaPorch & deck railings, load-bearing PermaPost porch posts, PermaCeiling & medallions.

New England Woodturners

860-377-2321; Fax: Same as phone

www.newenglandwoodturners.com

Andover, CT 06232

Manufacturer of custom wood stair components: balusters & columns up to 16 ft.; Victorian porch posts, newel posts, large turnings, twists, reeding & fluting; any wood species; suitable for paint or stain.

Nostalgic Porch Swings Co., LLC

717-209-7014; Fax: No fax

www.nostalgicporchswings.com

Lancaster, PA 17603

Manufacturer of historically styled porch swings; handcrafted in western red cedar & stainless steel fasteners; a variety of sizes & finishes available.

Pagliaccio Turning & Milling

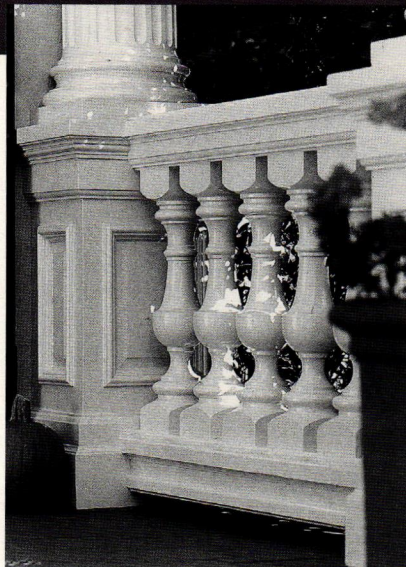
415-488-4333; Fax: 415-488-9372

www.pagliaccio.com

Woodacre, CA 94973

Manufacturer of custom & stock wood turnings & millwork: columns, porch posts, balusters, newels, finials, brackets, railings & more; historic restoration & custom projects.

To order free product literature from a company listed in this Buying Guide, go to period-homes.com/rs and click on the reader service number that appears at the end of its caption.



Pagliaccio offers custom and standard balusters, porch posts, newels and straight and curved railings.



Custom & reproduction wood turnings for exterior use are available from **Turnings Unlimited**.

Turnings Unlimited

937-588-4050; Fax: 937-588-4051

www.turningsunlimited.com

Latham, OH 45646

Manufacturer of porch & stair parts: balusters, newels & turnings; new & exact reproductions of any part, picture or design; fluted, spiral & rope designs.

Vintage Doors

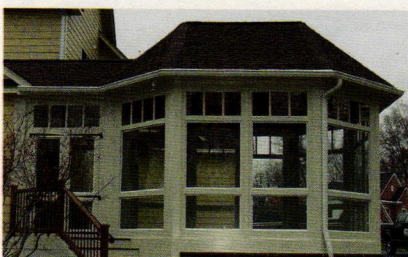
800-787-2001; Fax: 315-324-6531

www.vintagedoors.com

Hammond, NY 13646

Custom manufacturer of authentic solid wood doors: handcrafted by expert craftsmen in any design, size & shape; entrance doors; interior doors; Dutch doors; screen & storm doors; three-season porch panels; pet doors & gates; garden gates & much more; proudly made in USA; nationwide delivery.

Click on No. 1727



This screened-in porch was supplied by **Vixen Hill**.

Vixen Hill - Porch Systems

800-423-2766; Fax: 610-286-0051

www.vixenhill.com

Elverson, PA 19520

Supplier of modular cedar porch systems: interchangeable screens & optional storm glass; variety of architectural inserts.

BENCHES & GARDEN FURNISHINGS



This elegant cast-stone bench from **Haddonstone** incorporates a panelled back, scrolled arm rests, chimera supports and an egg-and-dart seat top.

Haddonstone (USA), Ltd.

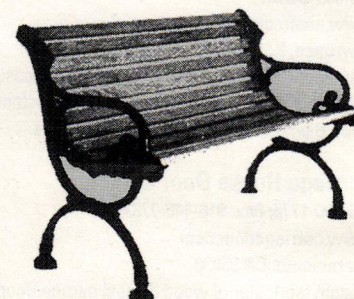
719-948-4554; Fax: 719-948-4285

www.haddonstone.com

Pueblo, CO 81001

U.S. based manufacturer of landscape ornament & architectural cast stonework: planters, fountains, sundials, statues, garden furniture, balustrades, gazebos, follies, columns, porticos, doors & window surrounds, cornices, molding, mantels & more; custom components.

Click on No. 4020



This Victorian II Bench from **Herwig Lighting** is available in a 4' Overall Length w/ center support

Herwig Lighting

800-643-9523; Fax: 479-968-6422

www.herwig.com

Russellville, AR 72811

Custom manufacturer of handcrafted interior & exterior lighting fixtures & more: cast-aluminum benches, bollards, fences, gates, plaques, signage, street clocks, posts to 14 ft. & columns; since 1908.

Click on No. 9130

Seibert & Rice, Inc.

973-467-8266; Fax: 973-379-2536

www.seibert-rice.com

Short Hills, NJ 07078

Importer of terra-cotta benches, planters, urns & ornament: handmade in Impruneta, Italy; fine detailing, frost-proof, extensive inventory & custom capabilities.

Stone Forest

888-682-2987; Fax: 505-982-2712

www.stoneforest.com

Santa Fe, NM 87501

Manufacturer, custom fabricator & distributor of handcrafted stone garden ornament: granite pavers, garden & wall fountains, planters, urns, benches, lanterns, stone tubs & rustic stone & copper sinks; carved natural stone.

LANDSCAPE & GARDEN SPECIALTIES

Authentic Provence, Inc.

561-805-9995; Fax: 561-805-5730

www.authenticprovence.com

West Palm Beach, FL 33401

Importer of authentic French & Italian garden antiques: hand-sculpted fountains in French limestone & Italian marble, mantels, statuary, reliefs, sundials, urns, tables & benches; terra-cotta, lead & zinc planters & more; pavilions.



This Gothic-style cloister wall manufactured by **Redwood Stone** can be used as a divider, screen or garden focal point.



Pavers and garden ornament are specialties of **Haddonstone**.

Haddonstone (USA), Ltd.

719-948-4554; Fax: 719-948-4285

www.haddonstone.com

Pueblo, CO 81001

U.S. based manufacturer of landscape ornament & architectural cast stonework: planters, fountains, sundials, statues, garden furniture, balustrades, gazebos, follies, columns, porticos, doors & window surrounds, cornices, molding, mantels & more; custom components. **Click on No. 4020**



This garden setting was created by **Romancing The Woods** using woods native to upstate New York.

Romancing The Woods, Inc.

845-246-6976

www.romancingthewoods.com

Saugerties, NY 12477

Manufacturer of rustic wood furniture, stairs, railings, fencing, balusters, gates, garden & woodland structures, benches, ornamental bridges, summer houses, arbors, conservatories, porch parts, gazebos, pergolas & pavilions.



This garden sculpture was fabricated by **Randolph Rose**.

Randolph Rose Collection

800-462-5851; Fax: 914-423-2095

www.randolphrose.com

Yonkers, NY 10701

Custom fabricator of lost-wax cast-bronze sculpture & home & garden accessories: statuary, benches, fountains, planters, urns & more; custom designs available.

Redwood Stone

216-464-0933; Fax: 216-464-1403

www.redwoodstone.com

Beachwood, OH 44122

Supplier & importer of hand-carved-stone architectural elements: columns, capitals, balustrades, planters, follies, garden ornament, statuary & more.



The Bedford is one of many pergolas available from **Trellis Structures**.

Trellis Structures

888-285-4624; Fax: 978-630-8725

www.trellisstructures.com

East Templeton, MA 01438

Designer & manufacturer of arbors, trellis, pergolas & garden furniture: western red cedar & mahogany; unique garden structures; ships anywhere in the U.S.

Walpole Outdoors

800-343-6948

www.walpolewoodworkers.com

Walpole, MA 02081

Manufacturer & designer of architectural landscape products: cellular PVC & cedar pergolas; railings, arbors, trellises, fencing & garden décor; garden sheds, studios, stables & gazebos; outdoor furniture, planters, mailboxes, flagpoles, cupolas & lanterns.



SEE OUR AD ON BACK COVER

KING ARCHITECTURAL METALS

800.542.2379 / KINGMETALS.COM

CLICK ON NO. 270

FENCES & GATES



This intricately forged garden gate was recreated from a 70-year-old photo by the skilled artisans at **Heritage Metalworks**.

Heritage Metalworks

610-518-3999; Fax: 610-518-7264

www.heritage-metalworks.com

Downingtown, PA 19335

Atelier of skilled blacksmiths & craftsmen: exclusively to trade; lighting, hardware, gates & railings; custom & signature lines available in iron, brass, bronze, copper, nickel, zinc & stainless steel. **Click on No. 1742**

Herwig Lighting

800-643-9523; Fax: 479-968-6422

www.herwig.com

Russellville, AR 72811

Custom manufacturer of handcrafted interior & exterior lighting fixtures & more: cast-aluminum benches, bollards, fences, gates, plaques, signage, street clocks, posts to 14 ft. & columns; since 1908. **Click on No. 9130**



Perfection Fence created this custom fence for this pool area.

Perfection Fence

800-537-2900; 781-837-3600; Fax: 781-834-1105

www.perfectionfence.com

Marshfield, MA 02050

Manufacturer, custom fabricator, importer & professional installer of landscape & garden specialties: gazebos, pergolas, planters & urns; fencing, gates & gate hardware.



Evolution aluminum fencing from **Wayside Fence** is available in several styles.

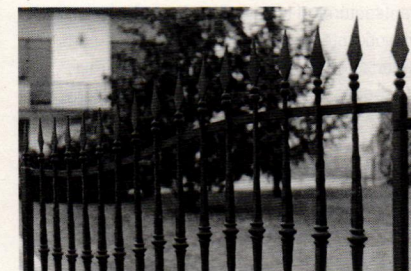
Wayside Fence Co.

631-968-6828; Fax: 631-968-6928

www.waysidefence.com

Bay Shore, NY 11706

Manufacturer of PVC & cedar fencing, gates, railings, arbors, lattice, pergolas, posts, caps & finials; supplier of gate hardware & operators; solar PVC post-cap, aluminum ornamental estate fence & more.



This fence, constructed of tapered pickets, was forged by **King Architectural Metals**.

King Architectural Metals

800-542-2379; Fax: 800-948-5558

www.kingmetals.com

Dallas, TX 75228

Wholesale supplier of ornamental & architectural metal components: for wrought-iron staircases, handrails, gates, fences, mailboxes, doors, screens, awnings & fireplace screens; finials; decorative elements. **Click on No. 270**



This custom fence was designed and fabricated by **Wiemann Metalcraft** using solid-bar steel; to ensure longevity, it was galvanized before urethane coating was applied.

Wiemann Metalcraft

918-592-1700; Fax: 918-592-2385

www.wmcraft.com

Tulsa, OK 74107

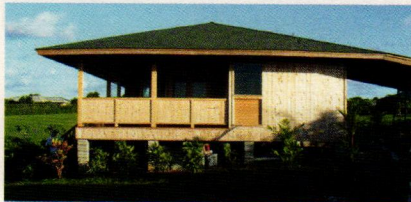
Designer, fabricator, finisher & installer of custom ornamental metalwork: serves a national market with stairs & railings, fencing, gates, lighting, grilles, entry doors, gazebos, balconies, site furnishings & more; all cast- & wrought-metal alloys, finishes & architectural styles; since 1940.

SIDING

208 Shake & Shingle, Inc.

800-276-4122; Fax: 360-276-4290
www.208shakeandshingle.com
Moclips, WA 98562

Manufacturer of western red cedar roofing & siding: historically accurate shakes & shingles; more than 30 years of experience.

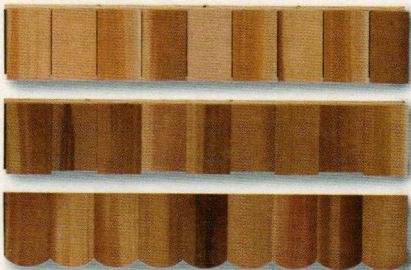


Bear Creek Lumber supplied the select knotty, tongue-and-groove Port Orford cedar for this building.

Bear Creek Lumber

800-597-7191; Fax: 509-997-2040
www.bearcreeklumber.com
Winthrop, WA 98862

Supplier of wood flooring, paneling, roofing, fencing, new & recycled timbers & decking: hand-split, machine-cut & fancy-cut butt fire- & rot-retardant-treated shakes & shingles; quartersawn clapboard & siding; post & beam.

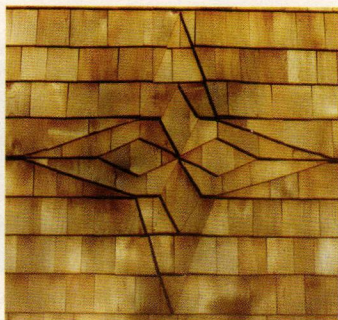


Handy Panels from Cedar Valley are handcrafted with kiln-dried western red cedar shingles mounted over an integrated fiberglass moisture barrier onto plywood backing.

Cedar Valley Mfg.

800-521-9523; Fax: 831-636-9035
www.cedar-valley.com
Hollister, CA 95023

Producer of premium-grade architectural cedar shingle siding panels: in exposures of 4, 5 or 7 in.; straight or staggered butt lines; custom matching



Liberty Cedar custom cut these fancy-butt designer shingles to produce this unique design.

of shapes & styles available.

Liberty Cedar

800-882-3327; 401-789-6626; Fax: 401-789-0320
www.libertycedar.com
W. Kingston, RI 02892

Supplier of decay-resistant wood roofing & siding: tapersawn, hand-split & resawn shakes; many patterns; custom runs; western red & Alaska yellow cedar, redwood, Douglas fir & mahogany; historical projects.



Nichiha's 1/2-in.-thick fiber-cement shakes create shadow lines similar to traditional wood siding.

Nichiha Fiber Cement

866-424-4421; Fax: 770-805-9467
www.nichiha.com
Norcross, GA 30092

Manufacturer of 1/2-in.-thick fiber-cement siding that replicates brick, sandstone, stone, shakes & clapboard.

NuCedar Mills, Inc.

413-593-8883; Fax: 413-593-8955
www.nucedar.com
Chicopee, MA 01022

Manufacturer of cellular PVC cladding products that replicate the look of cedar: siding, trimboard, molding & architectural components; Smooth, CedarGrain & RoughSawn finishes; 22 standard & 1,400 custom color combinations.



The Wood Factory provided the posts, spindles, newels, railings, gable details and appliques for this residence in Houston, TX.

The Wood Factory

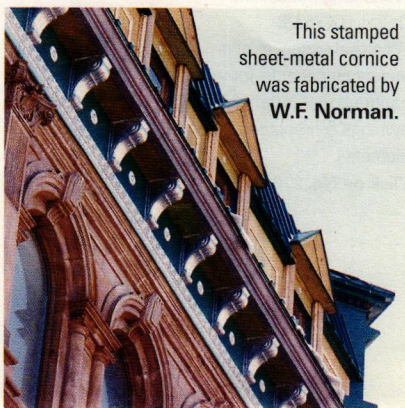
936-825-7233; Fax: 936-825-1791
www.period-homes.com/brochure/woodfc.htm
Navasota, TX 77868

Manufacturer of historically correct Victorian millwork: interior & exterior doors & stair parts; screen doors, porch posts, newel posts, rails, balustrades, brackets, capitals, custom mantels, siding & gazebos.

W.F. Norman Corp.

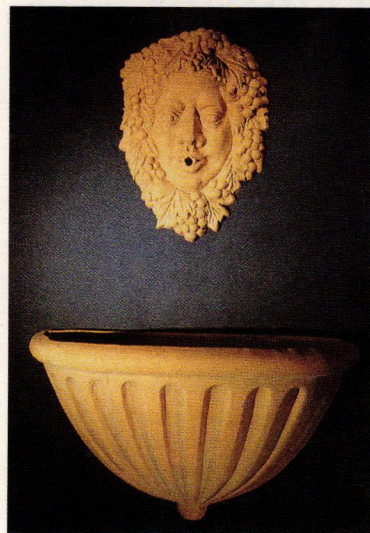
800-641-4038; Fax: 417-667-2708
www.wfnorman.com
Nevada, MO 64772

Fabricator of sheet-metal ornament & tin ceilings: hundreds of stock designs of cornices, moldings, bracket, backsplashes, pressed-metal ceilings, siding, roofing, cresting, kitchen equipment & more; duplication from samples or drawings.



This stamped sheet-metal cornice was fabricated by W.F. Norman.

FOUNTAINS & WATER FEATURES



Architectural Pottery created this hand-made Italian terra-cotta wall fountain.

Architectural Pottery

888-ARCH-POT; 714-895-3359; Fax: 714-898-5109
www.archpot.com
Midway City, CA 92655

Importer of Italian hand-carved sandstone & English-style cast stone: handmade Italian & Greek pottery; garden sculpture, planters & urns, fountains & benches; fiber-crete (FGRC).

Atlantic Fountains, LLC

860-669-1188; Fax: 860-669-4488
www.atlanticfountains.com
Woodbridge, CT 06525

Manufacturer, custom fabricator & distributor of architectural, landscape & floating fountains: lake-aeration products; musical fountains; components including pools, pumps, nozzles, wind & level controls & underwater lights.



Napoli fountain and temple fabricated by Haddonstone.

Haddonstone (USA), Ltd.

719-948-4554; Fax: 719-948-4285
www.haddonstone.com
Pueblo, CO 81001

U.S. based manufacturer of landscape ornament & architectural cast stonework: planters, fountains, sundials, statues, garden furniture, balustrades, gazebos, follies, columns, porticos, doors & window surrounds, cornices, molding, mantels & more; custom components.

Click on No. 4020



This lion fountain was carved in Indiana and Wisconsin limestone by Walter Arnold.

Arnold, Walter S. - Sculptor

847-568-1188; Fax: No fax
www.stonecarver.com
Elgin, IL 60120

Italian-trained carver & sculptor: fountains, fireplaces, gargoyles & other architectural ornament & sculpture; limestone & marble; interior & exterior; wood- & gas-burning fireplaces; carved-stone, limestone & marble mantels.



The charm of floating lilies enhances this water garden by Ponds2Go.com.

Ponds2go.com

877-752-0889; 856-719-6900; Fax: 856-719-2083
www.ponds2go.com
Barrington, NJ 08007

Supplier of pond products: complete pond kits, filtration, fountains, liners & tubs, plumbing supplies, pumps, replacement parts & waterfalls; books & contractor information.



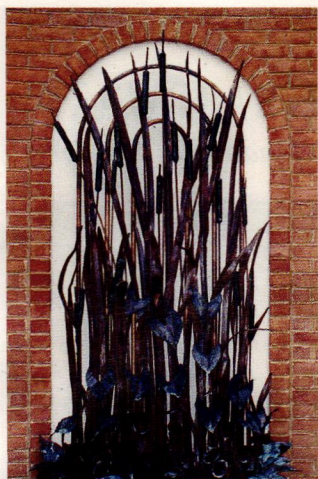
Atlantic Fountains added the water features to this garden.

Schiff Architectural Detail, LLC

617-887-0202; Fax: 617-887-0127
www.schiffarchitecturaldetail.com
Chelsea, MA 02150

Foundry, forge & fabrication shop: custom castings & non-ferrous forge work; rubber molding & pattern work; custom bowl fountains, lanterns, lampposts, benches, pipe-&-ball fencing, plaques, urns, gazebos & arbors; restoration work.

PLANTERS & URNS



The American Marsh fountain is 4x8x2 ft. and was custom fabricated by **Schiff Architectural Detail** in wrought iron, bronze and copper.

Stonesculpt

650-575-9683; Fax: 650-322-5002
www.customstonecarving.com
East Palo Alto, CA 94303

Sculptor: fountains, stone signs, garden & landscape ornament; traditional styles; stone & marble; custom work.

Sundance Water Design

505-326-7177; Fax: 505-326-7100
www.sundancewaterdesign.com
Farmington, NM 87401

Maker of pre-engineered, self-contained automated fountains; specialist in computer-controlled water effects, including bursting droplets, leap jets, hop jets, and drop jets.

The Arbor

205-251-0203; Fax: 205-328-1311
www.elegantearthatthearbor.com
Birmingham, AL 35222

Supplier of landscape fixtures & fountains: garden, wall, floating, pool & geyser fountains; cast bronze, aluminum & stone; cascades & waterfalls; water gardens & supplies; water-control devices; benches & more.



The Acanthus Leaf Fountain, model #374 from **The Brookfield Co.**, is hand-cast in weather-durable fiber-reinforced concrete; it measures 48 in. in dia. and is 37 in. tall.

The Brookfield Co.

706-375-8530; Fax: 706-375-8531
www.thebrookfieldco.com
Ringgold, GA 30736

Designer & manufacturer of more than 50 styles of planters & urns: designed by owner/artist; cast of fiber-reinforced concrete; various colors & finishes; garden sculpture & ornament; fountains, birdbaths, decorative accents & more.

Vertex Water Features

844-432-4303; Fax: 954-426-4854
www.vertexwaterfeatures.com
Pompano Beach, FL 33069

Custom manufacturer of submersible turbine-powered floating fountains from 1-60 hp., with heights up to 100 ft.; single streams of water to multi-head displays. Systems come with UL-listed controls and underwater lighting packages.

English Garden Furniture & Lighting Fixture Co

415-492-1051; Fax: 415-492-9705
www.englishgardenfurniture.com
San Rafael, CA 94903

Manufacturer of European- & contemporary-style garden furniture & lighting fixtures: benches, side tables, chaise lounges, dining sets & planters & urns in cast aluminum.



This cast-stone planter from **Haddonstone** is based on a design by Mary Watts for the Compton Potters' Arts Guild.

Haddonstone (USA), Ltd.

719-948-4554; Fax: 719-948-4285
www.haddonstone.com
Pueblo, CO 81001

U.S. based manufacturer of landscape ornament & architectural cast stonework: planters, fountains, sundials, statues, garden furniture, balustrades, gazebos, follies, columns, porticos, doors & window surrounds, cornices, molding, mantels & more; custom components.
Click on No. 4020



This 18-in. urn, based on a Frank Lloyd Wright design, is manufactured by **Historical Arts & Casting**.

Historical Arts & Casting, Inc.

800-225-1414; Fax: 801-280-2493
www.historicalarts.com
West Jordan, UT 84081

Designer & custom fabricator of ornamental metalwork: benches, columns, balustrades, lighting, gazebos, fencing, grilles, doors, windows, skylights, finials & more; cast iron, bronze, aluminum & wrought iron/steel; many styles; restoration services.

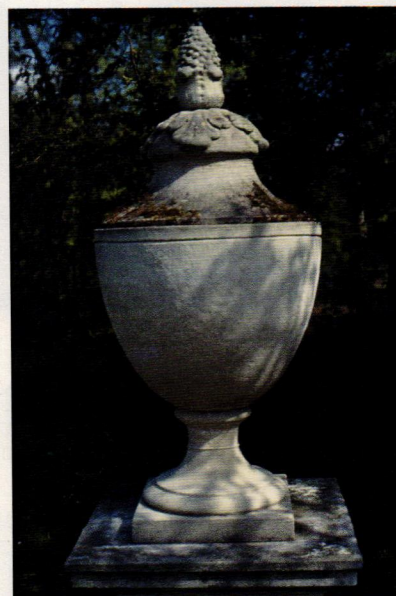


Kenneth Lynch & Sons manufactures planters in cast stone, lead and bronze.

Kenneth Lynch & Sons, Inc.

203-264-2831; Fax: 203-264-2833
www.klynchandsons.com
Oxford, CT 06478

Manufacturer of Classical garden ornament: wall & tiered fountains, Classical & Oriental statuary, park benches, birdbaths, topiary/arbors, sundials, finials & planters; cast stone, lead, copper & bronze; copper weathervanes.



This garden urn is available from **New England Garden Ornaments**.

New England Garden Ornaments

978-579-9500; Fax: 978-579-8900
www.negardenornaments.com
Sudbury, MA 01776

Importer of cast architectural ornament from 3 English companies: Chilstone, Haddonstone & Yorkstone; pavers, planters, urns, quoins, columns, pilasters, pier caps, copings, fountains, porticos, temples, pavilions & cornices.

Robinson Iron Corp.

800-824-2157; Fax: 256-329-8960
www.robinsoniron.com
Alexander City, AL 35010

Manufacturer of historical reproductions: classic Victorian lawn & garden ornament; bronze, aluminum & iron; planters, benches, fountains, columns, street lighting, mailboxes, cupolas & more.



Egg-and-dart detailing on the bowls of these formal Roman urns from **Robinson Iron** is complemented by traditional, ornamental laurel wreaths on the bases.



The design of the Orcio a Becco is based on a fifth-century urn; this handmade terra-cotta urn is imported from Impruneta, Italy, by **Tuscan Imports**.

Tuscan Imports, Inc.

843-667-9101; Fax: 803-753-9922
www.tuscanimports.com
Florence, SC 29505

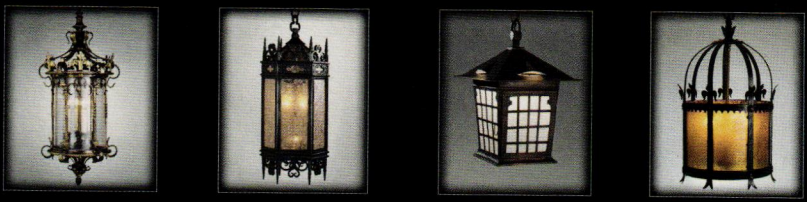
Importer of handcrafted terra-cotta elements: planters, urns, fountains, benches & statuary from Impruneta & Siena; distributors of hand-painted volcanic-rock tables.

To order free product literature from a company listed in this Buying Guide, go to period-homes.com/rs and click on the reader service number that appears at the end of its caption.



TIMELESS QUALITY

Since 1932, Ball and Ball has set the standard for the finest reproduction and restoration of 18th Century through Victorian Era antique hardware and lighting. Meticulously crafted period house and furniture hardware, fireplace accessories, sconces, chandeliers, lanterns and candlestands are all made on the premises in brass, tin, copper, pewter, hand-forged iron, and bronze. Choose from over 2,500 established designs, or have a piece custom designed and created just for you.



EXTON, PENNSYLVANIA

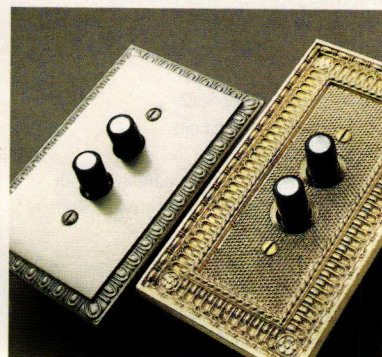
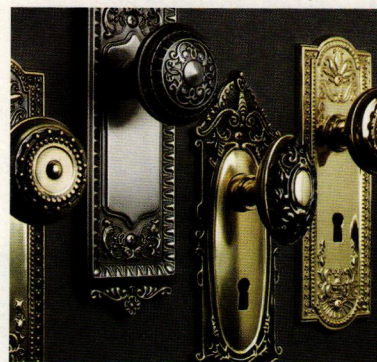
1.800.257.3711

WWW.BALLANDBALL.COM

CLICK ON NO. 7660

H HOUSE OF ANTIQUE HARDWARE

Period Perfect for the Traditional Builder

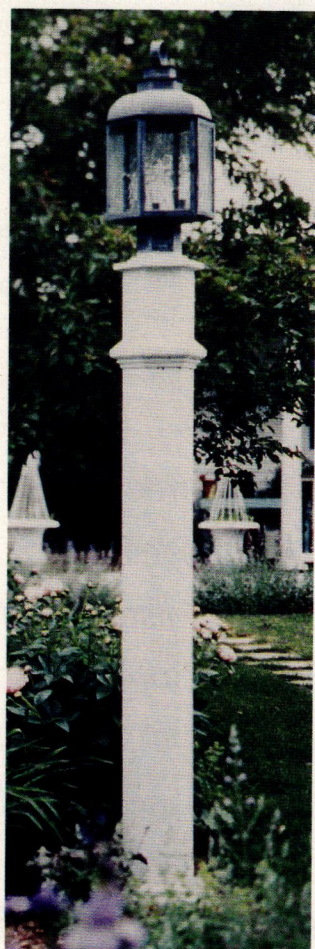


Join Our Professional Trade Partner Program
Quality Period Products • Everyday Savings • Free Shipping

www.HouseofAntiqueHardware.com/tradeplus

CLICK ON NO. 339

EXTERIOR LIGHTING



This Early American post-mounted exterior light fixture was hand crafted by **Authentic Designs**.



Designed by Mark Finlay Architects and fabricated by **Deep Landing Workshop**, the model L-9800 stands 29-in. tall and projects 19 in. from the wall.

Authentic Designs
800-844-9416; Fax: 802-394-2422
www.authenticdesigns.com
West Rupert, VT 05776

Manufacturer of Early American & Colonial lighting fixtures: brass, copper, vermeil metal & Vermont maple; interior & exterior mountings; CUL/UL-listed for wet & damp locations; lanterns, sconces, table lamps, chandeliers & pendants; custom work available.
Click on No. 60

Ball & Ball Lighting
610-363-7330; Fax: 610-363-7639
www.ballandball.com
Exton, PA 19341

Manufacturer of historical lighting fixtures: lanterns, sconces, chandeliers & pendants; porch & gas lighting; brass, tin, copper, pewter, iron & bronze; restoration & refitting; stock & custom.
Click on No. 7660

Deep Landing Workshop
877-778-4042; Fax: 410-778-4070
www.deeplandingworkshop.com
Chestertown, MD 21620

Designer & manufacturer of interior & exterior lighting fixtures: stylized reproductions rooted in the Colonial style.
Click on No. 809

Heritage Metalworks
610-518-3999; Fax: 610-518-7264
www.heritage-metalworks.com
Downingtown, PA 19335

Atelier of skilled blacksmiths & craftsmen: exclusively to trade; lighting, hardware, gates & railings; custom & signature lines available in iron, brass, bronze, copper, nickel, zinc & stainless steel.
Click on No. 1742



This English Gas Lantern shown with a bronzed copper finish and standard pendant cluster reflects the craftsmanship of the Scofield collection by **Heritage Metalworks** (photo by Jody Doyle).

Herwig Lighting
800-643-9523; Fax: 479-968-6422
www.herwig.com
Russellville, AR 72811

Custom manufacturer of handcrafted interior & exterior lighting fixtures & more: cast-aluminum benches, bollards, fences, gates, plaques, signage, street clocks, posts to 14 ft. & columns; since 1908.
Click on No. 9130



Manufacturer of Fine Interior, Exterior & Custom Lighting

LANTERN MASTERS, INC.

Our lighting projects include unique details and fine craftsmanship.

31328 Via Colinas, Suite 103 · Westlake Village, CA 91362
818.706.1990 · www.lantermasters.com



CLICK ON NO. 267

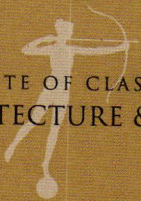
TRAVEL IS TIMELESS



Seville, Spain

The Institute of Classical Architecture & Art offers travel programs to the world's most exceptional private homes, palaces, gardens, and more. With an emphasis on classical design and visits led by experts in the design fields, our tours present guests with a unique historical perspective.

INSTITUTE OF CLASSICAL
ARCHITECTURE & ART



UPCOMING TOURS INCLUDE

**Rich Art & Architectural
Heritage of Andalusia, Spain**
May 14-21, 2017

**Private Paris & Beyond:
Exemplary Private Sites,
Residences, Chateaux &
Gardens**
June 9 - 17, 2017

Private Bar Harbor
August 24-27, 2017

**New 20th and 21st Century
Classicism in England**
September 28 - October 5,
2017

**Genoa, Torino & Milano:
Exceptional Private Estates,
Gardens & Historic Sites**
October 14-21, 2017
*+ optional extension: The Lakes:
Saturday, October 21-25*

**Japan: Architectural,
Decorative Arts & Garden
Treasures**
November 10-20, 2017

Private Palm Beach
November 30 - December 3,
2017

LANTERNLAND
ARTISAN COPPER LANTERNS AND OUTDOOR LIGHTING

JACKSON COPPER LANTERN
Outdoor Wall Light



Handmade in USA | Lifetime Warranty
Solid Copper & Brass | Custom Orders

LANTERNLAND.COM
855 454 5200
INFO@LANTERNLAND.COM



CLICK ON NO. 1748

VERMONT HANDMADE LIGHTING



West Rupert, Vermont • 800 844-9416
www.AuthenticDesigns.com



AUTHENTIC DESIGNS

CLICK ON NO. 60



The artisans at **Herwig** handcrafted this traditionally styled exterior lantern.

House of Antique Hardware
888-223-2545; Fax: 503-233-1312
www.houseofantiquehardware.com
Portland, OR 97232

Supplier of door, window, cabinet, furniture, electrical & bath hardware: original antique & vintage reproductions; Federal, Victorian & Arts & Crafts styles; hardware specialists available to assist with renovation projects.
Click on No. 339

To order free product literature from a company listed in this Buying Guide, go to period-homes.com/rs and click on the reader service number that appears at the end of its caption.



This Cape Cod flush ceiling light with clear seeded glass is available from **House of Antique Hardware**, it features solid brass construction, authentic aged patina and is CUL Listed for damp locations

Lantern Masters, Inc.
818-706-1990; Fax: 818-706-1988
www.lanternmasters.com
Westlake Village, CA 91362

Custom designer & manufacturer of lighting: chandeliers, sconces, pendants & lanterns; both gas & electric available; French, Tuscan, Spanish Revival, Tudor, contemporary, antique reproduction & more.
Click on No. 267

Lanternland
855-454-5200; Fax: 480-962-1997
www.lanternland.com
Mesa, AZ 85210

Full line of rustic handmade copper and brass outdoor and indoor lighting. Styles include Colonial, Colonial Revival, New-Classical, Greek Revival, Cape Cod, Bungalow, Mission, Arts & Crafts and more. Custom orders and reproductions a specialty. Popular custom options custom sizes including large and oversize fixtures, custom back plates and mounting solutions, custom sockets, gas lights, low voltage wiring and modification to meet 'dark sky' regulations.

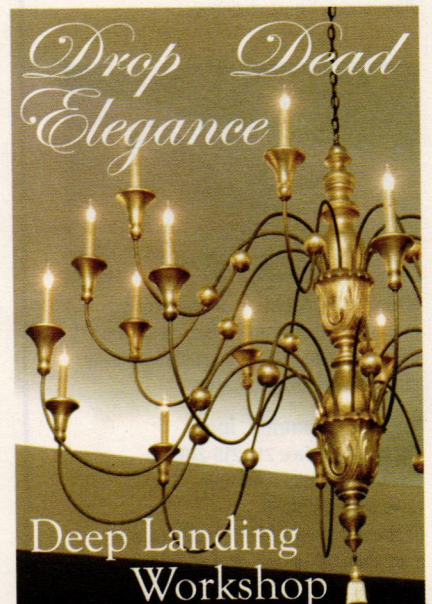
Click on No. 1748



Lantern Masters designs and manufactures electric and gas lighting for residential and commercial applications.



The Jackson Wall Light with bracket and scroll is a handmade outdoor lighting fixture made of solid copper and brass by **Lanternland**.



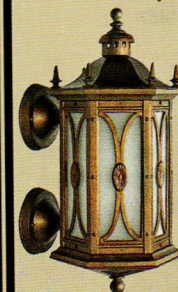
Drop Dead Elegance
Deep Landing Workshop

115 Deep Landing Rd
Chestertown Maryland 21620
877-778-4042 fax 410-778-4070
www.deeplandingworkshop.com

CLICK ON NO. 809

OUT DOOR LIGHTING HERWIG FIXTURES CAST METAL

SINCE 1908
DESIGNER & MANUFACTURERS
OF FINE LIGHTING FIXTURES
& ACCESSORIES
800-643-9513 - phone 479-968-6422-fax
www.herwig.com herwig@herwig.com



CAST ALUMINUM
LIGHT FIXTURES
POSTS, BOLLARDS
BENCHES &
STREET CLOCKS

MOUNTINGS:
WALL, BRACKET
POST & PIER

HUNDREDS OF
STANDARD DESIGNS
& SIZES
HANDCRAFTED
QUALITY

P.O. BOX 768 RUSSELLVILLE, AR 72801

CLICK ON NO. 9130

EXTERIOR PAINTS & FINISHES

Benjamin Moore & Co.
800-344-0400; Fax: 201-474-1117
www.benjaminmoore.com
Montvale, NJ 07645

Supplier of Eco-Spec low-VOC, 100% acrylic, interior latex paint: available in primer/sealer, flat, eggshell & semi-gloss.

Fine Paints of Europe
800-332-1556; Fax: 802-457-3984
www.finepaintsofeurope.com
Woodstock, VT 05091

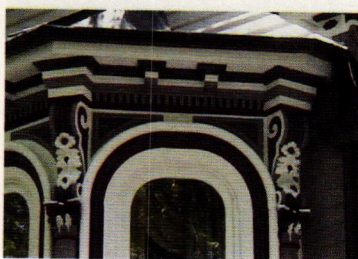
Importer & distributor of oil-based paints from Holland: full line of finishes ranging from matte wall & ceiling paint to brilliant gloss enamel; custom tinting.



Kremer Pigments manufactures pigments from natural materials, which are used to create a wide range of historically authentic paints and finishes.

Kremer Pigments, Inc.
800-995-5501; Fax: 212-219-2395
www.kremerpigments.com
New York, NY 10001

Importer & distributor of plaster, glue & more than 500 natural & manufactured pigments: Venetian plaster & colorants; wax products & lime washes.



Painting in Partnership assists in matching historically accurate colors.

Painting in Partnership
847-934-8885; Fax: 847-934-8157
www.paintpartner.com
Palatine, IL 60067

Painting contractors: decorative painting, wallpapering, custom painting & concrete finishing; interior & exterior; gilding, graining/marbelizing, stencils/stenciling, faux finishes & glazing, Venetian plaster & more.

Sherwin-Williams Co.
800-524-5979; 216-566-2505;
Fax: 216-566-1832
www.sherwin-williams.com
Cleveland, OH 44115

Exterior-color Preservation Palette includes 64 colors; Interior Preservation Palette includes 80 colors. Palette includes the Roycroft Arts & Crafts Palette.

EXTERIOR MOLDED ORNAMENT



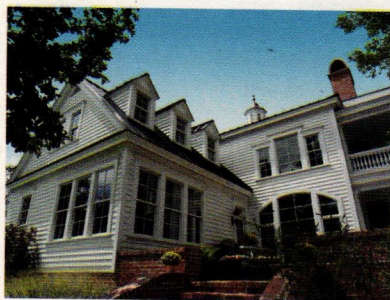
Felber Ornamental Plastering Corp. supplied the mold for this bracket.

Felber Ornamental Plastering Corp.
800-392-6896; 610-275-4713; Fax: 610-275-6636
www.felber.net
Parkesburg, PA 19365

Creators and manufacturers of interior and exterior molded ornament: capitals, cornices, friezes, niches, keystones, rosettes, coffers, domes & medallions; custom mantels; plaster, gypsum & GRG; GFRC, signage, plaques, sculptors, model makers & casters on staff; stock & custom

Fischer & Jirouch Co.
216-361-3840; Fax: 216-361-0650
www.fischerandjirouch.com
Cleveland, OH 44103

Manufacturer of handcrafted architectural ornament: mantels, cornice moldings, door & window surrounds, ornamental ceilings, ceiling medallions, niches, domes, brackets & corbels; casting & PC plaster; interior & exterior columns.



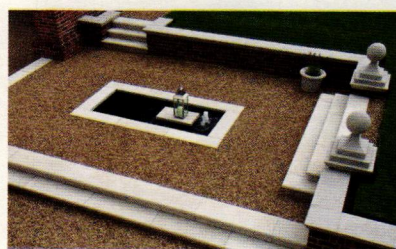
Fypon's exterior molded ornament is manufactured in high-density polymer & other polymers.

Fypon
800-446-3060; Fax: 419-445-4440
www.fypon.com
Maumee, OH 43537

Manufacturer of more than 4,000 molded architectural elements: window features, balustrades, turnings, ceilings, brackets, vents & more; high-density polymer & other polymers; load-bearing polymer/steel columns with 12-in. maximum dia.

Goodwin Associates
585-248-3320
www.goodwinassociates.com
Tampa, FL 33602

Supplier of interior & exterior architectural building products: columns, capitals, balustrade systems, moldings, domes, medallions, metal ceilings & more; polyurethane, wood & fiberglass; stock & custom.



Architectural components from **Haddonstone**, including steps, risers and finials, create this contemporary landscape feature.

Haddonstone (USA), Ltd.
719-948-4554; Fax: 719-948-4285
www.haddonstone.com
Pueblo, CO 81001

U.S. based manufacturer of landscape ornament & architectural cast stonework: planters, fountains, sundials, statues, garden furniture, balustrades, gazebos, follies, columns, porticos, doors & window surrounds, cornices, molding, mantels & more; custom components.

Click on No. 4020



The custom cartouche, rosettes and foliate swag on this cornice ornament were fabricated by **Warner Bros. Studio Facilities**.

Warner Bros. Studio Facilities
818-954-3000; Fax: 818-954-7829
www.wbsf.com
Burbank, CA 91522

Custom fabricator of architectural ornament for interior & exterior applications: collection of thousands of historical molds; cornices, columns, capitals, mantels, door & window surrounds, ceiling medallions, brackets & signage.



Hand-carved architectural elements are one of the specialties of **Frederick Wilbur**.

Wilbur, Frederick - Woodcarver
434-263-4827; Fax: No fax
www.frederickwilbur-woodcarver.com
Lovingson, VA 22949

Manufacturer of traditional decorative interior & exterior carvings; furniture, mantels, moldings, brackets, friezes, capitals, rosettes & heraldry; original designs & historically accurate reproductions.

STONE, BRICK & MASONRY



Paving from **Belden Brick** was used to create this decorative pattern.

Belden Brick Co., The
330-456-0031; Fax: 330-456-2694
www.beldenbrick.com
Canton, OH 44702

Manufacturer of brick: variety of colors, textures, sizes; stock & custom shapes; color matching; jack arches, water tables, bullnoses, coping caps, pavers, face brick, brick sculpture & more.



Boral Bricks supplies bricks, pavers and pavers in a variety of colors, styles and textures.

Boral Bricks, Inc.
800-526-7255
www.boralbricks.com
Roswell, GA 30076

Manufacturer of a wide range of commercial & residential face brick: exterior finish design choices, wood molds, pavers, special shapes, hand-molded brick, brick sculpture/murals & brick-finishing systems.



Gavin Historical Bricks supplied its reclaimed Bluestone Cobble for this driveway in Pittsburgh, PA.

Gavin Historical Bricks, Inc.
319-354-5251; Fax: 319-688-3086
www.historicalbricks.com
Iowa City, IA 52245

Supplier of authentic antique brick pavers, granite cobblestones, clinker & common brick: custom matching; large quantities; special shapes; hand-molded & face brick; nationwide shipping.

Click on No. 191

GAVIN
HISTORICAL
BRICKS

319-354-5251

Antique Brick and Stone
Shipped Nationwide Direct:

Street Pavers
Granite Cobblestone
Building Bricks
Clinker Bricks
Custom Brick Matching

info@HistoricalBricks.com
www.HistoricalBricks.com



Antique Brewery Bricks

CLICK ON NO. 191



Elegance in Hand Moulded Brick

www.handmadebrick.com or call 704-636-8850

CLICK ON NO. 3130



Quoins are one of the many specialties available from Haddonstone.

Haddonstone (USA), Ltd.
719-948-4554; Fax: 719-948-4285
www.haddonstone.com
Pueblo, CO 81001

U.S. based manufacturer of landscape ornament & architectural cast stonework: planters, fountains, sundials, statues, garden furniture, balustrades, gazebos, follies, columns, porticos, doors & window surrounds, cornices, molding, mantels & more; custom components.

Click on No. 4020

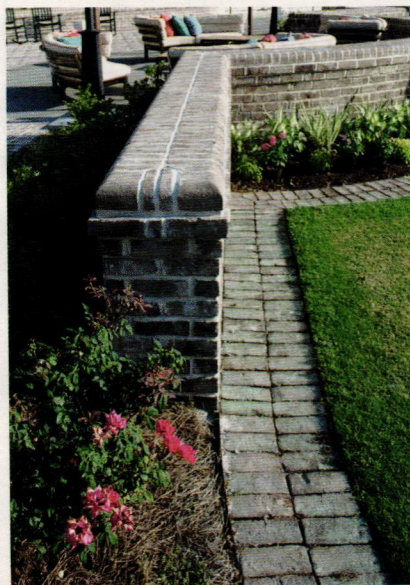
Meridian Brick
704-341-8750; Fax: 704-341-8735
www.forterrabrick.com
Charlotte, NC 28226

Manufacturer of facing brick & clay pavers: 5 regional collections; 1,000 styles; concrete roof tile.

Old Carolina Brick Co.
704-636-8850; Fax: 704-636-0000
www.handmadebrick.com
Salisbury, NC 28147

Manufacturer of handmade brick, pavers & fire-place fronts: 12 styles of pavers; special shapes, glazed headers & arches; fired with coal to provide bisques & unique colors; custom sizes in any quantity; restoration.

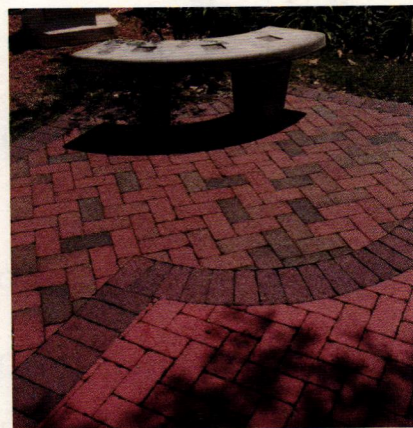
Click on No. 3130



Old Carolina Brick supplied the handmade brick for this walkway and wall.

Palmetto Brick Co.
800-922-4423
www.palmettobrick.com
Wallace, SC 29596

Supplier of custom face brick: variety of shapes & applications.



Rumbled pavers from Pine Hall Brick are made of clay and are tumbled after firing to create an "old world" appearance.

Pine Hall Brick Co.
800-334-8689; Fax: 336-721-7517
www.pinehallbrick.com
Winston Salem, NC 27105

Manufacturer of pavers, face brick, thin brick & special shapes: 40+ face-brick styles; 60+ clay-paver styles including Rumbled, CityCobble, permeable RainPave & StormPave; since 1922.



From balustrades, columns and porticos to pier caps, window surrounds and custom designs – our high specification cast stone designs provide affordable elegance to any project.

Browse our unrivalled collection **online** or **call** to request a catalog.



HADDONSTONE

haddonstone.com
866 733 8225

Made in the USA

CLICK ON NO. 4020

To order free product literature from a company listed in this Buying Guide, go to period-homes.com/rs and click on the reader service number that appears at the end of its caption.



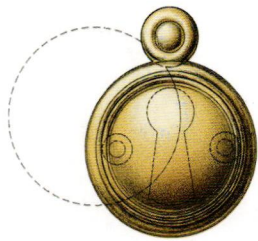
Robert Benson Photography

Taste of Italy

Inspired by a client's sojourns to Italy, "Limonaia"—designed by Charles Hilton Architects—is reminiscent of a Palladian Villa. A center pavilion and loggias store citrus trees during cool weather months. The natural, rusticated materials of the Limonaia are integral features that tie the building to its surroundings. Handhewn, reclaimed ceiling boards and timber beams, supported by stone walls, reflect the enduring timelessness of classic architectural forms and natural materials.



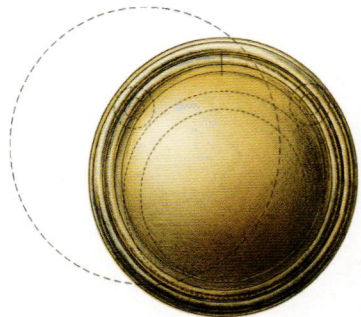
Thumb Turn & Rose



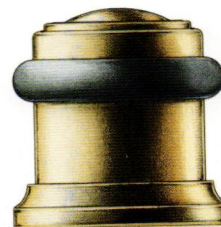
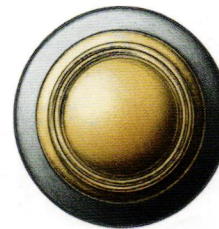
*Emergency Trim Ring
with Swinging Cover*



Shutter Knob



*Cylinder Ring
with Swinging Cover*



*Cylindrical Floor Stop
with Trim Ring*



E. R. BUTLER & Co.

*"NN" Design Series
W.C. Vaughan Co. Collection*

Door Knobs Available in 2 3/4, 2 1/2, 2 1/4, 2, and 1 3/4 inch Diameters (2 3/4 in. Shown).
Available in 3 inch Diameters for Use as Center Knobs.
Also Available in 1 1/2, 1 1/4, 1, and 3/4 inch Diameters for Cabinets and Fine Furniture.
Solid Turned Brass Knob and Rose.
Standard, Custom Plated and Patinated Finishes Available.

WWW.ERBUTLER.COM

CATALOGUES AVAILABLE TO THE TRADE · SHOWROOMS BY APPOINTMENT ONLY

3/4 Scale

FINE ARCHITECTURAL, BUILDERS' AND CABINETMAKERS' HARDWARE



KÖENIG
EISEN

Details.

KING ARCHITECTURAL METALS

LOS ANGELES
DALLAS
ATLANTA
BALTIMORE

800.542.2379
KINGMETALS.COM
FACEBOOK
PINTEREST
YOUTUBE

CLICK ON NO. 270