

JANUARY 1965

# PERFECT HOME

MAGAZINE



EAT IN THE KITCHEN? Pages 8-9

Published Monthly For Your Reading Pleasure By

DAVID  
SCHENANDOAH  
*builder*

*"Custom Styled Home Construction"*



322 OLIVE AVE.

PHONE 461-5944





*What's a Navajo? . . .* ten nimble fingers, an eye for simple, dynamic design and patience. A Navajo woman wove the small Indian blanket hanging on this wall. An imaginative decorator borrowed the design for this unique, vinyl floor.



**All six  
of us  
LOVE  
our house**

An easy manner, sincerity in everything he does, deep religious convictions and a love of work have kept Charles Eugene Boone moving up and up in the entertainment world. Today at 30 "Pat" has piled up over 20 million in record sales, has appeared in eight motion pictures, the latest of which are "Never Put It in Writing" and "The Horror of It All." He has had his own TV show and published three books.

Despite this impressive record he and his wife, Shirley, still have time to create a true HOME for their four daughters. We invited him to tell you about that home.

OUR SYSTEM of shopping for a new home is probably like that of a lot of other folks. With the four little girls, Shirley is always busy, so I do the preliminary looking in the area we think would be convenient. I look mainly at the outside to see if there is room for all the things that would be fun for our family.

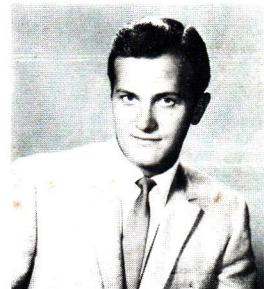
I want to make sure that there is room to kick a football around, and plenty of space for a pool. Then we like volleyball, soccer and a place for the basketball goal and the ping-pong table. Guess that doesn't sound like a school for young ladies, but I teach them to be tomboys, and to be good sports when they don't win.

Shirley teaches them to be young ladies when they are in her charge. The inside of the house is my wife's domain.

When I found a house that, from my point of view, would be fun for the Boone family, Shirley went to see if it would meet her specifications. I insisted that I have a separate room for an office and that worked out nicely.

The girls loved the house we finally agreed upon for our home in Beverly Hills. They got an extra bonus because there is a Philippine straw hut out in one corner of the garden, which makes a jungle easily imaginable to them. Our grounds turned out to be a family-sized Disneyland. There is a big hedge all around the place which gives us privacy, but we never have big crowds at the house or a swimming party.

BY PAT BOONE



We like to keep it simple, with a few friends for a buffet supper or an evening card game. As a family, we like to get together in the kitchen for a snack, so I guess growing up is going to be pretty normal for our children.

Now that all the girls are in school (they are five to ten years old) Shirley has a little more time. Not much, though, because we are an active family. While none of the girls want to sing or be in the acting business, Shirley makes a family project of our singing together and she rehearses them and teaches them songs. Last Christmas we sang as a family at the Orthopedic Hospital and they loved being able to really do something that the children there would enjoy. Cheryl, our oldest, now thinks she would like to be a nurse.

You might say we are the most "together" family we know, but I suppose the fact that Shirley and I were married young and all the girls are close in age makes life interesting and our home is the real center of our activity. We do want our girls to have well-rounded lives and each has friends at school with whom she plays and there are innumerable birthday parties and activities that widen their circle of friends as they grow.

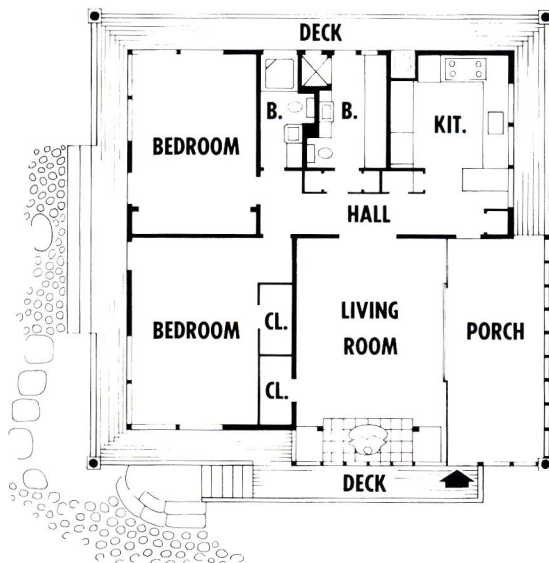
We know that our faith in God is great and that many wonderful things have certainly been poured out upon us. We couldn't be more thankful for our life.



# NATURE IS THEIR NEIGHBOR



The sloping site heightens the sense of seclusion. The rocky setting, natural wood finishes and the squared pattern of the windows produce Japanese effect



ARCHITECT—LUTA MARIA RIGGS F.A.I.A.

DOUGLAS SIMMONDS







## AROUND THE CORNER AND UNDER THE STAIRS



DAVIS, WARD

Usually when we speak of putting space under the stairway to use we think in terms of closets or cupboards. Did you know that you can have a complete office tucked into this often overlooked few feet of space? These two pictures show how to manage this.



*Most meals are eaten*





# n the kitchen

BY DONNA NICHOLAS HAHN



Upboards under this wide window are topped with plastic laminate to form a convenient serving counter next to the breakfast table. The unusual color theme combines pastels. The sheer Austrian blinds can be lowered to soften morning sun.

Usually you would be wise to limit pattern in your kitchen because the effect can become quite busy, but the boldly patterned paper is balanced by masses of plain golden yellow in shades and draperies. Two-level counter doubles as snack bar.



Truly a living kitchen, this one has a small table, a snack counter and even a sofa for on-the-job relaxing. Tasselled shades cover the bank of shelves at one end of the room. Contoured beams end in columns displaying carved panels.

IF YOU DON'T APPROVE of eating in the kitchen don't let your family see these pictures. A recent survey reveals that this is the room where almost 85 per cent of American meals are eaten. Ninety-three per cent of the breakfasts, 94 per cent of the lunches and 66 per cent of the dinners are served in the kitchen.

Thirty per cent of the homemakers interviewed do not even move into their dining room for informal entertaining, reserving it for the once-a-month-or-less occasions when they get out the best china and silver.

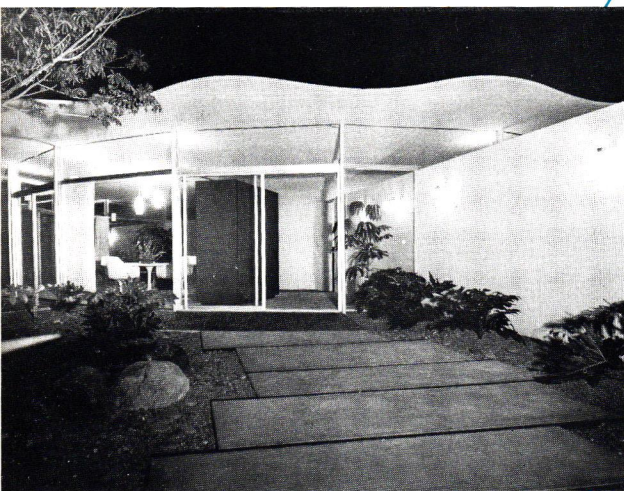
Each of these three kitchens is colorful, each manages to keep most of the clutter of food preparation out of sight of the table, and each, though providing a comfortable and inviting setting for eating, is both convenient and efficiently arranged. Once your family sees how truly pleasant kitchen meals can be, you may find them suggesting that you dress up your kitchen.

AHLBERG, HEDRICH-BLESSING

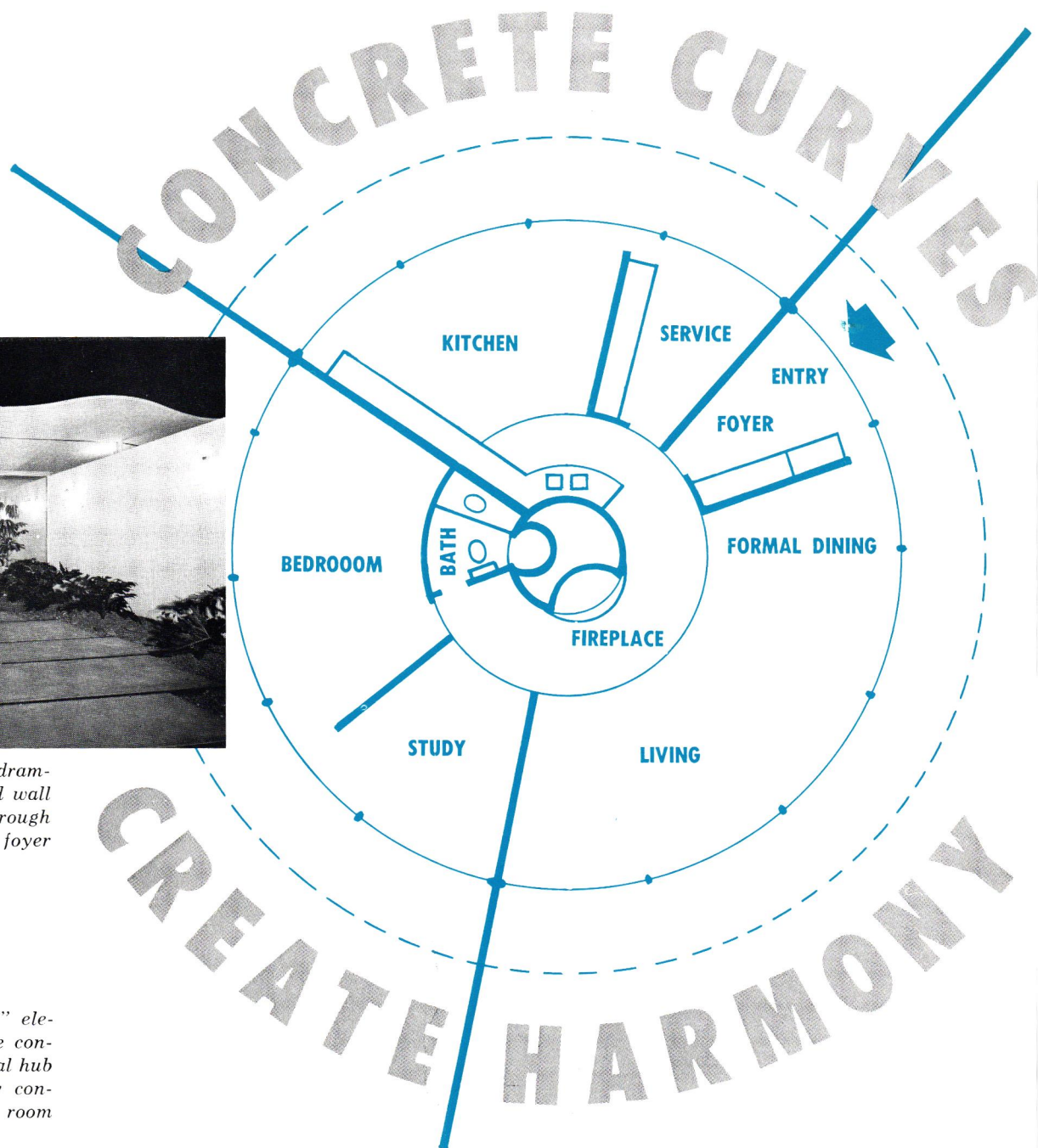


A morning-bright scheme for a kitchen bay is teamed with painted chairs, and a circular table demurely covered with a toe-touching cloth of green matching the green shades at the windows. The china and linens are carefully color coordinated.





*The front entrance is dramatized by the textured wall which continues on through glass to form interior foyer*



**PLAN:** All "working" elements of the plan are concentrated in the central hub area and are equally convenient from every room

*Study which adjoins living room can also serve as guest room. Note the band of glass topping many interior walls*





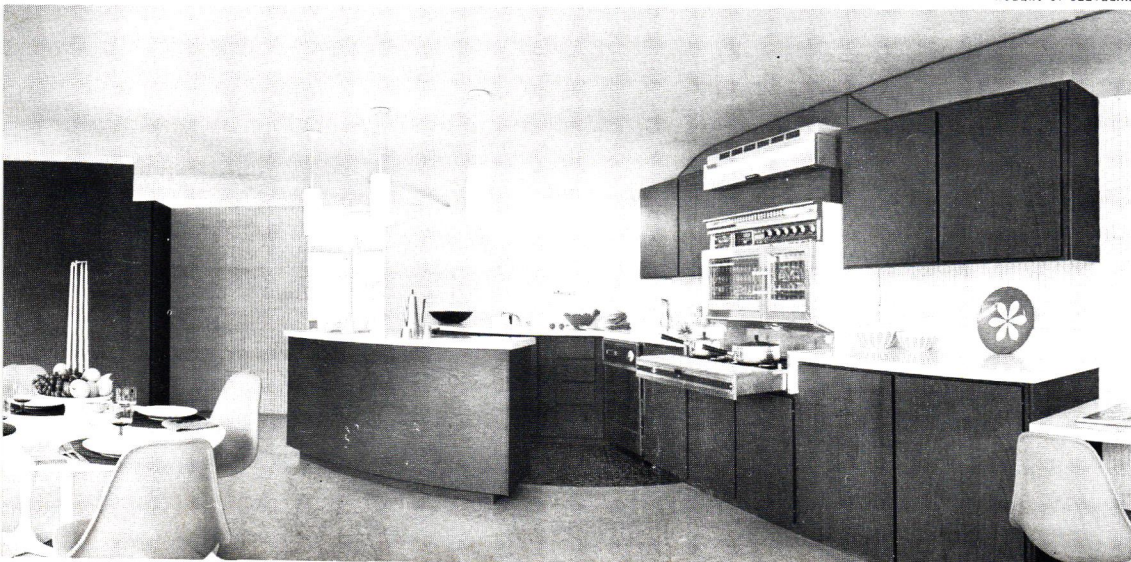
*Such extensive expanses of glass are made possible by isolation of setting. Planes are kept simple, powerful*



*The pie-shaped layout of rooms concentrates space where it is most valuable — around the glass perimeter of the rooms*



ROBERT C. CLEVELAND



*Particularly effective is the kitchen with its furniture finish cupboards, good lighting and easy-care surfaces*



BY ARTHUR BURNS



1



1 The white, yellow and gray bathroom has two lavatories

2 Rooms have duplicate facilities: built-in counters, desks

3 Furnace for the apartment is concealed in hall closet, far left. Linens and supplies are stored behind cupboard doors

4 Youngest boy's room has spatter floor, cork bulletin board

3



4



## Need more bedrooms? Put them over the garage

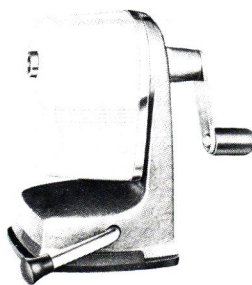
Faced with the need for two more bedrooms, the owners of this house called in an expert who found the necessary space above the garage. A sheltered breezeway gives access to the new apartment which was planned for the two young men of the family, and an intercom system permits constant contact with the boys. In addition to the two bedrooms there is also room enough for a compartmented bath with individual lavatories. Except for the sofa beds and chairs, all furniture is built in. Walls and trim are Philippine mahogany and ceilings are acoustical tile.





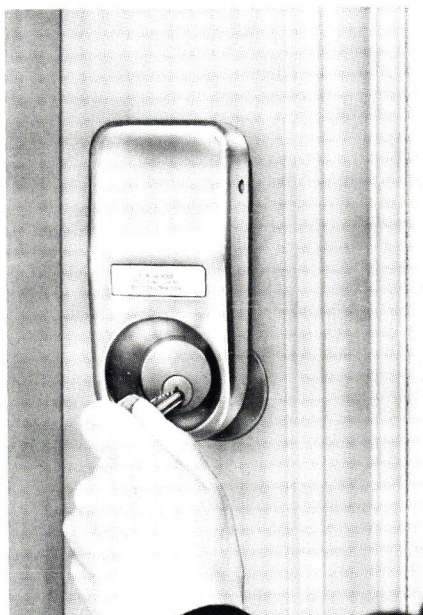


## News of the New



### VACUUM-BASE PENCIL SHARPENER . . .

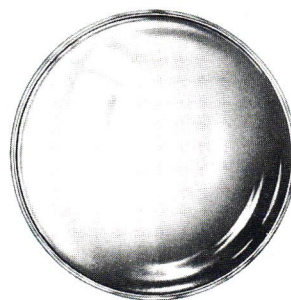
Flip the lever up or down to fasten or release your pencil sharpener from any smooth, non-porous surface. You can store the unit in a desk drawer and carry it to the wastebasket to empty it. The natural rubber base will not mark or mar table top or desk surface. You can carry it with you from room to room as you work.



**KEYHOLE LIGHT . . .** Instant brightness for your house key is provided by a door accessory which uses standard penlight battery and can easily be installed anywhere without wires in only a few minutes. Light goes on and off automatically at a touch of your finger. The brass-finish anodized aluminum unit is sturdy, and weatherproof.

### REAR-VIEW MIRROR FOR HOMEMAKER . . .

A stick-on mirrored disc lets you keep an eye on the children and check on anyone at the door. It can be affixed near the garage door to give a view of the driveway when you are backing out. Stick one in the kitchen and another one in the laundry area to give a view into adjoining play areas. A strong adhesive backing provides a lasting bond even at extreme temperatures. The convex mirror is four inches in diameter with a non-corroding aluminum frame.



**COLONIAL ALUMINUM STORM DOOR . . .** It's aluminum. It's Colonial. It's strong and beautifully styled. What's more this is probably about the handsomest combination screen and storm door you have ever seen. It was thoughtfully designed to enhance the one spot that receives more attention than any other point of your home's exterior. The finish is a white acrylic, baked-on enamel.

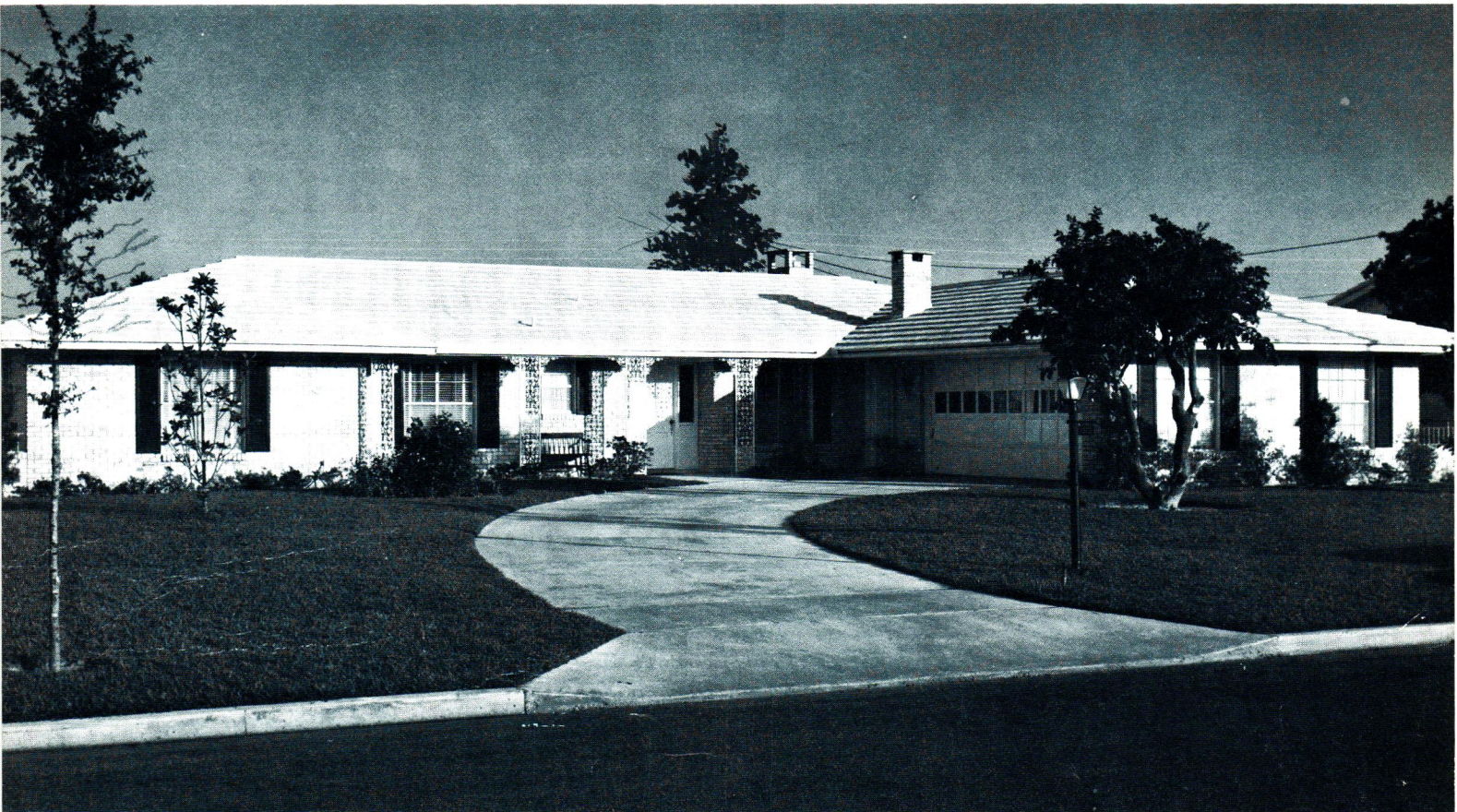
**PERENNIAL PERFECT LAWN . . .** Certainly it sounds almost too good but it is true. A lawn that will add hours to your leisure, a lawn that need never be mowed, fertilized, watered, raked or weeded, a lawn that stays bright green (or practically any other color) the year round, and a lawn that is completely non-allergenic, can be yours in a surprisingly brief time. After removing the grass and sterilizing the soil, you will need to install a gravel barrier and an asphalt felt ground cover then pour on your "permanent" grass which is actually a graded stone with vinyl plastic coating.

One 80-pound bag of these colorful stones will cover over nine square feet to a depth of one and one-fourth inches.



# TODAY IN TRADITION

FRED DE WITT

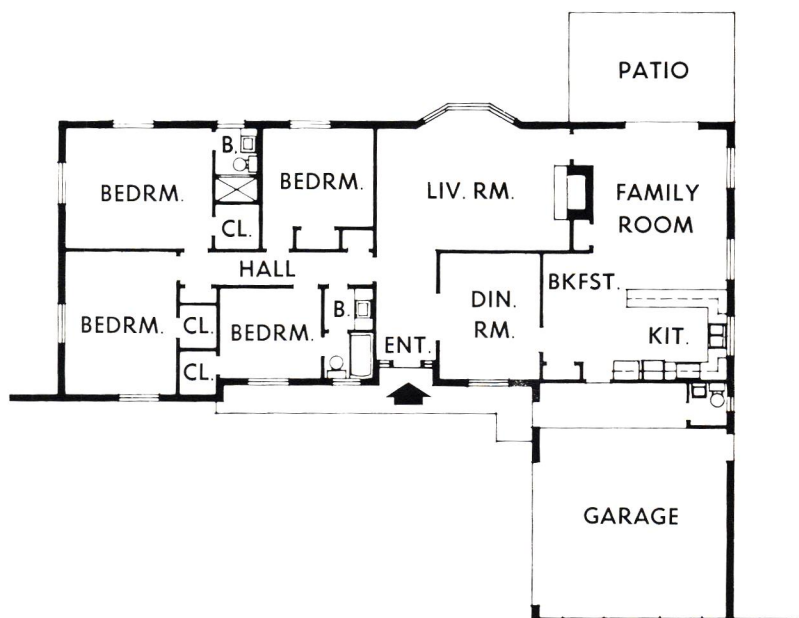


**W**ITH CLOTHES, as with houses, there are fads. But women noted for their excellent style sense seldom observe the capricious clichés of the moment. They select in their houses, as in their clothes, basically satisfying lines and accent them with distinctive colors or accessories.

Many of the most charming homes evidence this very thoughtful sense of selection. Few exteriors could be more basic than the simple design of this brick home. But study the way the crisp shadow lines of the shingles, the dark shutters, and the pleasant filigree of the white ironwork set this house apart from less successfully designed homes.

The trim, frosted with white and the lazy curve of the drive also add their own special graciousness.

Inside are four generous size bedrooms, quietly segregated in their own wing. The living room is somewhat isolated and can not conveniently serve as a traffic route between other zones. The family and breakfast rooms logically adjoin the compact, open "U" kitchen.





P.O. Box 911  
Cedar Rapids, Iowa 52406  
Return Requested

FRED MEYERS  
762 OAK STREET  
RIVER PARK  
FT PIERCE FLA

Bulk Rate  
U. S. POSTAGE  
**PAID**  
Cedar Rapids, Ia.  
Permit No. 31

PH-1253-D-161

PERFECT HOME is being sent to you through the cooperation of these outstanding organizations whose materials — skills or services make every Schenandoah Home a superior quality product which you may own through the years with pride.

## PETE & BRUNO TILE & TERRAZZO

Tile — Terrazzo — Marble

3311 Oleander Ave. Phone 464-2280  
Fort Pierce, Florida

## MOORE'S APPLIANCE

Hotpoint Appliances — Fedders Air-Conditioners

114 South Fourth St. Phone 461-7330  
Fort Pierce, Florida

## KEN STONE & SON PLUMBING CO.

Plumbing Contractors

Residential — Commercial

1119 Alameda Ave. Phone HO 1-0632  
Fort Pierce, Florida

## TOM PETERMAN HOME SUPPLIES

"Largest Carpet Outlet In St. Lucie County"

Floor Coverings — Home Specialties

3 Orange Ave. Phone 464-2481  
Fort Pierce, Florida

## WHEELER ELECTRIC

*Electrical Contractors*

Residential and Commercial Wiring

"Service is Our Slogan"

Rt. 3, Box 5138 Phone 461-6807  
Fort Pierce, Florida

## DOMESTIC AIR

BILL HEGER, *Owner*

HEATING AND COOLING

AIR CONDITIONING CENTRAL SYSTEMS

P.O. Box 142 Phone AT 7-0693  
Stuart, Florida

## THE HIGHLIGHTER

*Wholesale Distributors*

Residential and Commercial

Lighting Fixtures and Supplies

Searstown Shopping Center Phone 461-2903  
Fort Pierce, Florida

*I think we should not hesitate to spend what money  
we can on our homes — not pretentiously, but to  
make them right for us, and a place to which our  
friends will like to come. — SUSAN GLASPELL*