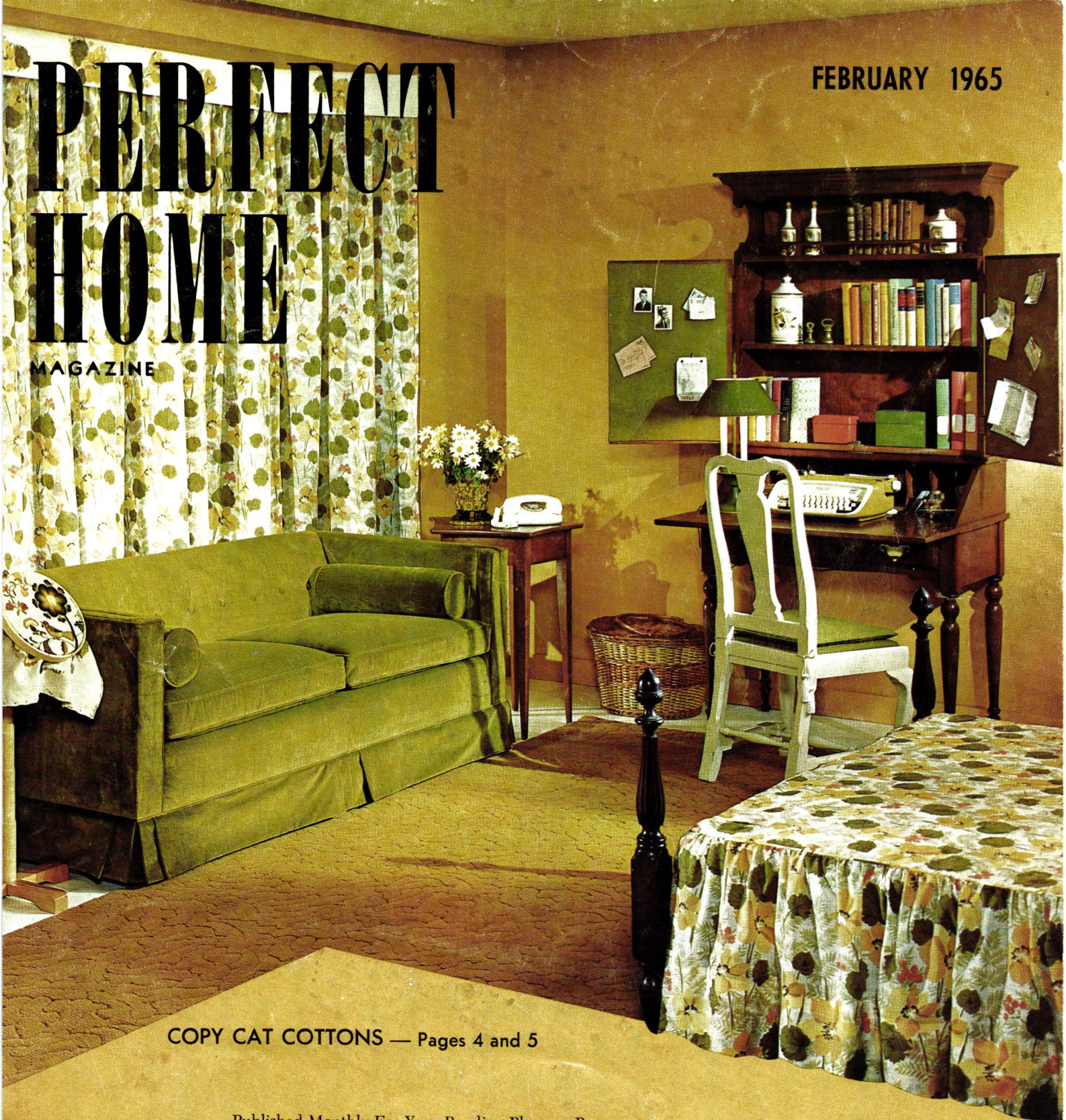


# PERFECT HOME

MAGAZINE

FEBRUARY 1965



COPY CAT COTTONS — Pages 4 and 5

Published Monthly For Your Reading Pleasure By

DAVID  
SCHENANDOAH  
*builder*



*"Custom Styled Home Construction"*

322 OLIVE AVE.

PHONE 461-5944





◆◆◆ FRANKLY FRENCH . . . Terra cotta floor tiles, white plaster walls and beamed ceiling make a combination unmistakably French. It was only natural to add a provincial table and four comfortable French chairs when furnishing this inviting dining corner. Another charming room of French inspiration is pictured on pages 8 and 9.



◆ ◆ ◆ The only remarkable aspect about our home and our lives in that home is that we live in an atmosphere untouched by Hollywood's glitter.

We set out to make it that way. I definitely wanted a neighborhood something like the one I came from in my home town, Morgantown, West Virginia, tranquil, peaceful and a little off the celebrity-beaten path.

My wife and I were in accord with our determined desire to avoid a "Hollywood" neighborhood, one where 90 per cent of the neighbors are in the entertainment business. I enjoy my work and I respect and like the people with whom I work, but I do not want my entire existence to be wrapped up in show business. I did not want our back-fence conversations to be centered around the newest television pilot films or the latest show ratings. Nor did I want that type of life for my family, including our children, Karen and Tommy. My wife has always agreed completely with these feelings.

Finally, we were shown the home we wanted, a 30-year-old, two-story stucco house in Glendale's mountain district. Not a pretentious house by any means, it had no sweeping grounds. The lot was so small that when we decided to put in a swimming pool a couple of years ago it took a corps of engineers to accomplish the feat. There were no built-in appliances, no inter-coms, no bars concealed behind hand-rubbed paneling.

However, there was a quiet street, tree-shaded and lined with lush green lawns. There was the heady scent of well-tended flower gardens. There was an atmosphere of tranquility and comfort. These, to us, mean home.

Because television had made me into something of a celebrity, we worried that our new neighbors might treat us as "different". I had visions of one of them showing up on my front porch with her out-of-town relatives, asking me to do my "nervous" routine. If there is one place I do not like to act nervous, it's around my family.

But all my fears were unjustified. Our neighbors accepted us as "the new folks next door". From that very first day we have belonged. Conversations still focus on the weather, golf or our children.

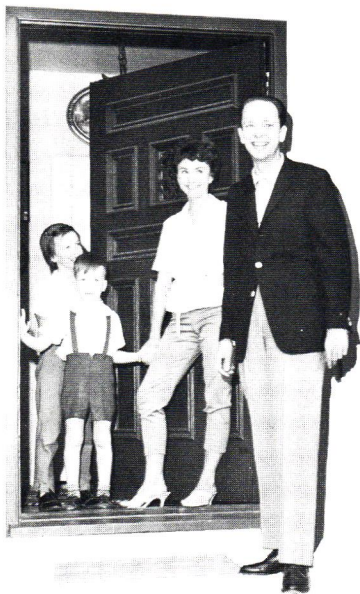
Karen and Tommy go to the public schools in Glendale and since few of their contemporaries stay up late enough to see the show there is virtually no effect on them because of my activity in the entertainment world.

Our home life is just about that of any other family where the breadwinner has been modestly successful. In our home are comfort and peace . . . and most important of all, love. That's exactly the way we want it.

—DON KNOTTS

Nervousness is the trademark of Don Knotts, the entertainer. He currently plays "Barney Fife" on the Andy Griffith Show. HOME serves as a stabilizer in his often-frenetic life.

## THERE WAS A QUIET STREET





BY DONNA NICHOLAS HAHN



All decked out in



◆◆◆ If you have an eye for pattern, a love of color and a little ingenuity here is an original way to combine them. The royal blue and turquoise of wallpaper and fabric are perfectly matched. If you prefer to try your hand at making the bedspread, the slipcover or the draperies, the fabric is available by the yard, but you'll probably find it much easier to choose the items from a well designed selection of ready-mades. These include draperies and curtains of several lengths, quilted bedspreads and practical closet accessories such as garment bags (short and long), blanket boxes, chests of drawers, shoe caches, and hat boxes.

Royal blue was used for accent in the ball fringe of the window valance and the tape which edges the closet shelves. Bright turquoise was selected for the cushions on the Hitchcock chairs.



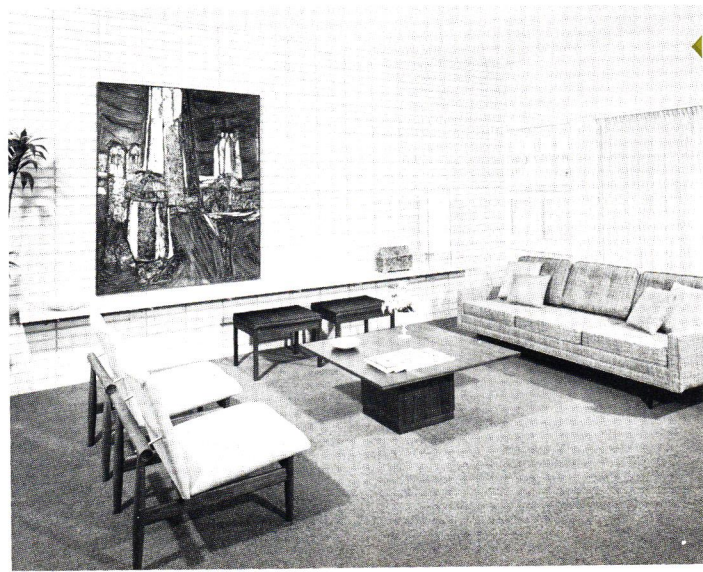
You'll be tempted to leave the closet doors standing wide open if its interior looks like this. Blanket and hat boxes fill the top shelves. Ten clear plastic drawers keep handbags and sweaters dust-free as do the drawers of the print-covered chest at the right. Royal blue braid was used to edge the shelves

◆

The crisp bright colors of the fiber-filled spread, the draperies and the slipcover on the wing chair will continue to match their companion wallpaper through countless washings or dry cleanings. Cotton fringe in the royal blue of the print outlines the graceful scallops of the valance. The floor length draperies are swept back over sheer white batiste curtains which are also used in a panel at the head of the bed and to line the bed curtains

# COPYCAT COTTONS







# When Experts Get Together

◆◆◆ Expert planning usually produces superior results. When the builder, architect, landscape architect, decorator, artist, real estate developer and land planner all work together to create a successful home it is no surprise when that home wins one of the nation's highest design awards for the architect, a high merchandising award for the builder and the acclaim of practically all who have visited it. The builder specified "a house that represents the tops in design, something people will appreciate even if they don't want to buy."

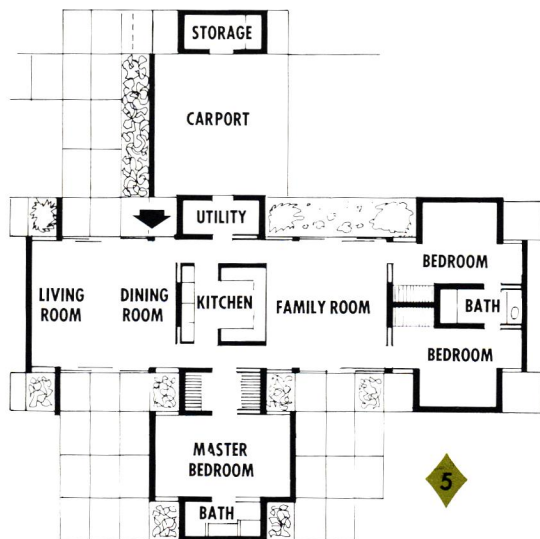
Designed primarily of concrete, it displays this material in many forms. You see concrete blocks in the walls and columns, concrete bricks for wall facings, precast channel beams and roof slabs and

poured concrete and marble-chip, terrazzo floors.

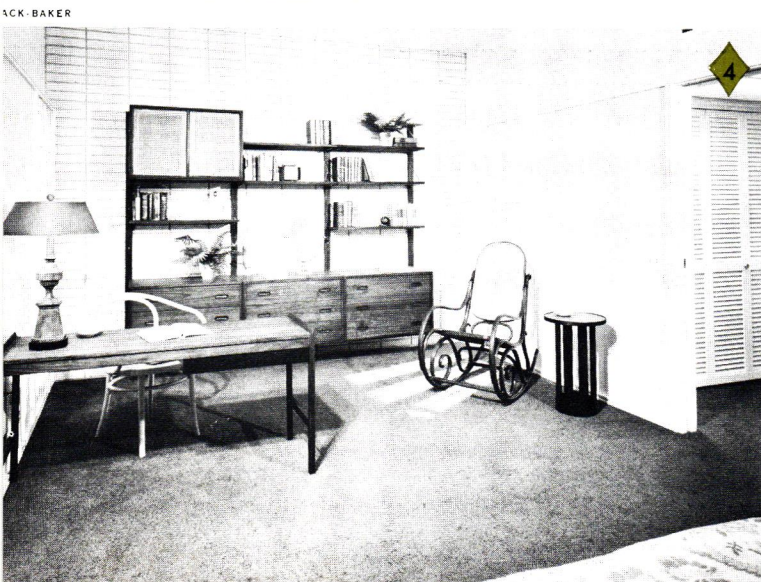
The inverted channel beams which support the roof slabs are particularly distinctive. (See two of them in the photograph of the exterior.) They result in a pleasing variation of ceiling heights. Precast slabs spanning these channels form the ceiling.

The offset location of the master bedroom suite forms two protected terraces. One adjoining the living and dining areas is used for alfresco meals and adult lounging. The second, adjacent to the family room and close to the children's rooms, is the domain of the younger family members.

By planning as a team the experts produced a house that is more livable, more attractive and more durable . . . A house appealing to most families.



ARCHITECT: MARK HAMPTON, A.I.A.



Four channel beams support the unique roof. Doors and windows are recessed beneath these beams. The grounds are dramatically landscaped with flower beds directing you toward the wide entrance walk



Free-standing book shelves on aluminum stands house the music center and provide a display for a bold, colorful oil painting by a contemporary artist. All woodwork matches that in the adjoining kitchen



The painting on the white, concrete brick wall was commissioned for the house as a means of setting a color theme. Louvered panels cover casement windows which provide ventilation when glass doors are shut



To enter master suite you must pass through the dressing-closet. Lower ceilings here resulted from inverted channel beams. Air conditioning ducts are recessed in beam. Sitting area makes it possible for parents to be isolated while the children entertain



The plan, roughly a cross, gives each room access to a paved patio or terrace. The master bedroom suite is comfortably separated from the children's area by a dressing area and the large family room



# WITH A FINE FRENCH HAND

◆◆◆ Frankly French with a contemporary outlook which still preserves a pleasant hint of tradition, this combination study and guest room develops practical elegance with a harmonious blending of woods.

A botanical print selected to cover the sofa-bed establishes the basic color theme. The same fabric appears on panels of the doors and on the side curtains on the book storage shelves. The comfortable lounge chair is upholstered in bronze corduroy. The same fabric covers the antique French slipper chair. Book cabinets, major architectural feature of the room, have been painted a matching bronze.

The French have always shown a keen appreciation for the special virtues of wood, the most familiar yet still the most versatile of materials. One would almost think that time might finally bring an end to the new products and forms it can be fashioned into but note the unique roller shades

which can be lowered to conceal the book shelves lining the wall behind the desk. They are cut from pliant wood wall covering . . . actual wood veneer lami-

nated to a durable canvas back. It can be custom fit with scissors.

Many of the accessories in the room reflect the traditional influence and are of many types and finishes of wood. The carved wall panels, the Spanish candlestick used for a lamp base, the courier's boxes on the book shelves, the handsome writing box on the desk, are all of wood.

The flooring, though all of vinyl, is richly patterned in travertine with accent strips of teakwood pattern to match the oiled teakwood paneling of the walls.

The room serves most of the time as a quiet study or home office, but it can offer instant over night hospitality, thanks to the handsome convertible sofa.

Below . . . The area rug before the sofa-bed is styled from a traditional design in contemporary colors. Color scheme comes from sofa's print

Right . . . A lamp made from a tole bird-bath lights the desk. Shades over the book shelves are of laminated, pliable sheets of wood on canvas

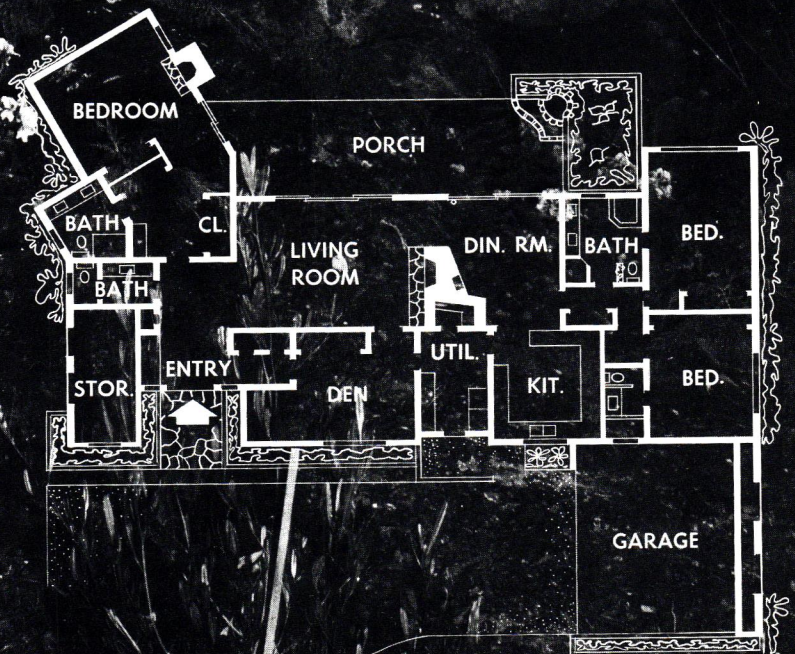








*A study in  
Rural Sophistication*





◆◆◆ Ample use of rugged stone combined with weathered wood siding and heavy shake roof have given this home the provincial charm of the farmhouses of France, but here the truly rustic flavor ends. Inside, the house offers all the convenience that modern planning can practically include. Mention heating, air conditioning, food preparation and preservation . . . almost any appliance or equipment, this home has it or is powered to accommodate it at any time. The plan has been developed to meet electrical needs now and long into the future.

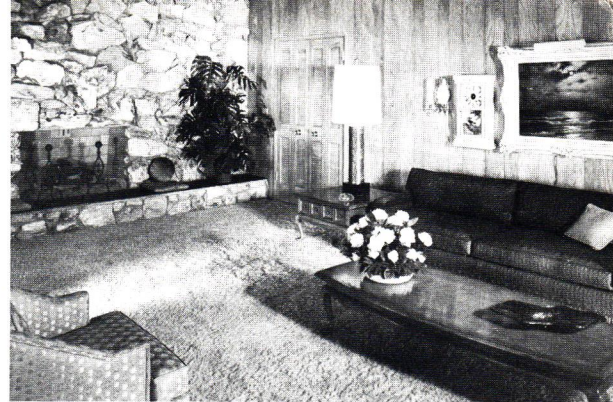
Particularly pleasing are the special exterior lighting effects. For late-day drama the fountain has fixtures concealed in its center. These offer a range of brightness and color that make it a constant source of wonder. More lights are recessed in flower beds, behind trees, and concealed in the eaves at the corners of the house.

The service areas are typical of the conveniences found throughout the house. The kitchen includes two ovens for simultaneous roasting and broiling plus a warming oven to keep waiting foods warm or to heat left-overs. A dishwasher and twin freezers are close to the sink. A service area inter-com station saves tiring trips to distant areas.

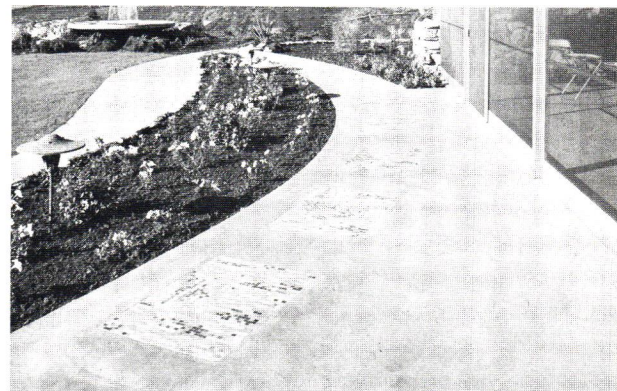
A casual blending of provincial furnishings can give all interior settings a pleasant informality currently being called "Country". Colors are bright but not completely uninhibited. Fabrics are durable but imaginative. Structural details are handsome but not overly costly. This common-sense approach to both architectural and decorative styling has produced a home with honest appeal.

◀ The dramatic fountain, formed directly on a dish-shaped, earthen mound was contoured with a wood template. When the concrete set the mold was shoved away and the interior of the basin was faced with small, glass tiles. At night the recessed lights cast their shimmer on the water

To take full advantage of the spectacular view from the back of the house, little used space like the utility area is located at the front of the house. Just behind the large, double-doored front entrance you can see the stone screen which conceals the access to this service zone



Settings are decorated with a comfortable blend of provincial furniture and accessories typical of the chateaux and manors of France and England. This casual "country" look is accented by the rugged stonework and wood paneling of the living room



Colorful glass mosaics remain beautiful and color-true even under prolonged exposure to the weather and foot traffic. They form large "stepping stones" inset into the concrete of the terrace that adjoins the spacious screened porch

#### PLAN

The master bedroom suite angles to hold the view from two directions. Each bedroom has its own bath and a powder room stands close to the front door. Lawn and outdoor play equipment is housed in shallow closets at the back of the garage

CHITECT: WILLIAM M. BRAY, A.I.A.









# PLAN A

## CONVERSATION CENTER

◆◆◆ Remember . . . just a few years back? The big decorating question was “Where can we locate our TV?” Lately it’s been “Where can we put the stereo HiFi?” Conversation, plain conversation, is probably our most enjoyed and practiced diversion but we have yet to hear anyone wonder “Where shall we talk?” If you have the impression that just about any spot is adequate you may be right but consider how much more conducive to companionable, spirited exchange of ideas a truly pleasant setting can be.

What constitutes the perfect background for conversation? The grouping should be small and somewhat intimate. It should be located out of traffic lanes. If you have a fireplace you may have little choice about location because fire has natural attractions no

other spot can equal. Flames seem to glow more brightly on your own hearth. Conversation seems to expand more amicably before its warmth.

A broad window with a lovely view can also nourish thought. Minus a fireplace or a window, an important painting, a large chest or even your sofa can become the focus for your grouping. Around this nucleus colors should be serene, but with a suggestion of liveliness in accessories. Lighting should be low in intensity.

And last, but decidedly important: Good conversation frequently needs to be coddled by more positive forms of nourishment. Always close at hand for such emergencies should be tables to accommodate such amenities as plenty of large ash trays, cigars, trays for beverages and dishes for tasty snacks.

At the top of the opposite page is a corner of a large living room. Against a wall covered in gray and white striped fabric you see what adds up to an almost ideal conversational center. The matte black storage unit and gray carpet are livened by green-gold twin sofas. A shelf extends along the wall and behind both sofas forming a shelf-table. It is marbled in a matching green-gold. ◆◆ At the bottom, a smaller, less formal setting but every bit as inviting. The colorful cotton print of the sofa is matched by the terra cotta corduroy at the windows and on the wall between them. To make the short windows appear floor length the decorator hung short cafe curtains on brass rods. The drum table and the nautical mementos on the wall behind the sofa are antiques



## *Plant a Paper Garden*

◆◆◆ Horticulture may not be your game. Not all of us are blessed with a green thumb . . . Not all of us can grow ecstatic about the good earth, but most of us do like to surround ourselves with bright flowers and growing plants. So if you have neither the space nor the inclination to produce your own, nor the budget to permit fresh flowers on anything more than birthdays or anniversaries, you might consider a paper garden.

Prints from old books and portfolios cover most of the walls of this hallway. Panels of painted plaster provide just the right amount of relief from too much pattern.

It may take time to assemble such a wide collection but you won't have too much trouble finding enough prints to cover a single panel, to frame a door or window or to fill a wall above a chest or bed. This collection was hung with simple wallpaper paste and can be removed later, soaked clean and refilled for continued enjoyment.







## *To Hide a Tired View*

◆◆◆ Not all vistas to the out-of-doors are or can ever become delights to the eye. All can be concealed from view even though you may have to provide for access to the hidden area. Above, you see a wall apparently paneled with rice paper. Below, two of the panels are removed to let you peek into the central court. When the lowest of the two center rice paper panels is also removed you discover a glassed door into the central court.



BRIGHT  
LIGHTS

SPOTS OFF

SELECT  
BUSINESS  
SERVICES BY  
COMPUTER?

PUNCH  
BUTTON  
EMERGENCY  
AID

WASHABLE  
LEATHER

FLOATING  
LAWN MOWER

## As a Matter of Fact

◆◆◆ To let your light so shine that you receive more brightness with less current is the aim of German scientists who recently demonstrated their discovery that a trace of fluorine gas inside a tube will make the bulb burn up to 300 percent brighter than any incandescent lamp now available and with less current. The fluorine also causes the bulb to repair itself but the gas eventually dissipates and the bulb becomes useless ◆◆◆ The procession of old products with new faces seems endless these days. Remember the old fashioned French chalk which worked so well as a remover of spots, particularly grease spots? Now a preparation which works in the same efficient manner but more quickly is available in an aerosol can. It can be sprayed evenly on the spot. In ten minutes all that remains is a powdery white deposit which may be brushed or vacuumed off. One treatment will remove most spots with no hint of a ring. Care must be observed not to inhale the spray or to let it fall on furniture finishes or some plastics ◆◆◆ At a recent Engineer's ball held in a southern university, freshman boys were assigned their Matchmate dates by computer. Interests in music, literature, art and sports, as well as physical appearance, size, political preferences and many other details were used to pair the couples. Can you imagine the results if business performance is ever computerized? You might be able to present your demands for service or products to a central agency which would riffle through its file of cards, pick out the company which best filled your specifications. Until that day, however, your best insurance for a job well done is to select a company with a record for performance and integrity from names like the ones you see on the cover of this magazine ◆◆◆ A "panic" alarm which automatically dials the police, your doctor or the fire department attaches to your telephone and requires only the press of a nervous hand to summon help ◆◆◆ It's only a step from the washable "leather" shoes now being introduced on the market to tubbable "leather" upholstery with a new washable, drycleanable textile that looks and feels much like leather. At present it is being used only for shoes but it has definite possibilities in the home furnishings field ◆◆◆ An early bird reminder about lawnmowers. A new mower does away completely with wheels and moves easily and smoothly over the grass on a quarter inch cushion of air. The flying mower hugs the ground, keeping hands and feet safely away from the blade. Lawn clippings drop to the ground beneath the mower as it passes. The same air that lifts the mower raises grass for cleaner cutting. The unit is so maneuverable that only a finger tip is needed to direct it.



P.O. Box 911  
Cedar Rapids, Iowa 52406  
Return Requested

FRED MEYERS  
762 OAK STREET  
RIVER PARK  
FT PIERCE FLA

Bulk Rate  
U. S. POSTAGE  
PAID  
Cedar Rapids, Ia.  
Permit No. 31

PH-1253-D-161

PERFECT HOME is being sent to you through the cooperation of these outstanding organizations whose materials — skills or services make every Schenandoah Home a superior quality product which you may own through the years with pride.

## PETE & BRUNO TILE & TERRAZZO

Tile — Terrazzo — Marble

3311 Oleander Ave. Phone 464-2280  
Fort Pierce, Florida

## MOORE'S APPLIANCE

Hotpoint Appliances — Fedders Air-Conditioners

114 South Fourth St. Phone 461-7330  
Fort Pierce, Florida

## KEN STONE & SON PLUMBING CO.

Plumbing Contractors

Residential — Commercial

1119 Alameda Ave. Phone HO 1-0632  
Fort Pierce, Florida

## TOM PETERMAN HOME SUPPLIES

"Largest Carpet Outlet In St. Lucie County"

Floor Coverings — Home Specialties

2803 Orange Ave. Phone 464-2481  
Fort Pierce, Florida

## WHEELER ELECTRIC

*Electrical Contractors*

Residential and Commercial Wiring

"Service is Our Slogan"

Rt. 3, Box 513B Phone 461-6807  
Fort Pierce, Florida

## DOMESTIC AIR

BILL HEGER, *Owner*

HEATING AND COOLING

AIR CONDITIONING CENTRAL SYSTEMS

P.O. Box 142 Phone AT 7-0693  
Stuart, Florida

## THE HIGHLIGHTER

*Wholesale Distributors*

Residential and Commercial

Lighting Fixtures and Supplies

Searstown Shopping Center Phone 461-2903  
Fort Pierce, Florida

*I think we should not hesitate to spend what money  
we can on our homes — not pretentiously, but to  
make them right for us, and a place to which our  
friends will like to come. — SUSAN GLASPELL*