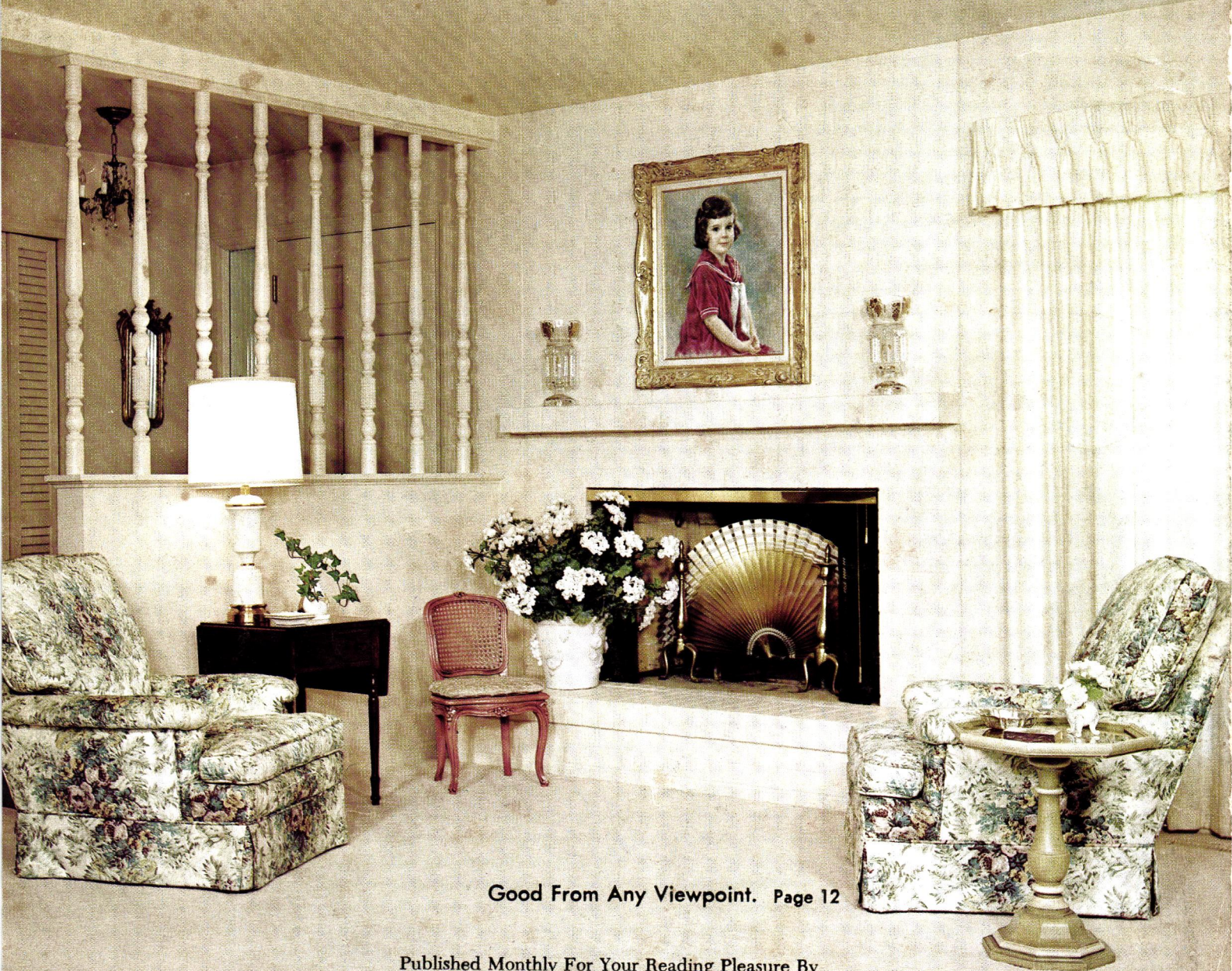


PERFECT HOME

JUNE 1965

MAGAZINE



Good From Any Viewpoint. Page 12

Published Monthly For Your Reading Pleasure By



DAVID
SCHENANDOAH
builder

"Custom Styled Home Construction"

322 OLIVE AVE.

PHONE 461-5944

COME ON OVER. WE'RE EATING OUT . . . There's no more enjoyable place to be at mealtime than a shadow-dappled terrace where the sky is your ceiling and tall trees your sunshade. Architecturally a terrace is a link between your house and its environment. Even more, it's your guarantee of many delightful warm weather hours. If you're planning a terrace, look around. Study the details that make this one so pleasant. In the meantime we'll just pop another steak on the broiler. For more terraces turn the page.

CHARLES R. PEARSON



By IRENE DUNNE

HOME



is a place for spiritual regeneration

Irene Dunne is one of the most charming of all Hollywood's "first ladies of the screen." She has delighted audiences in the entertainment world for the past 20 years. She has the dignity of a Duchess and is slim, svelte and exceedingly beautiful. She has been married to Dr. Frank Griffin since 1930. Miss Dunne was appointed by President Eisenhower as an alternate delegate to the Twelfth General Assembly of the United Nations and she served for a year.

HOME TO ME is a place of peace, joy, fellowship and a place to express oneself in a variety of ways. My home is a French chateau type house — not provincial and not formal. My gardens, formal and cutting, are lovely. Ours is a comfortable, nine-room house and it is airy and cool in the summer. The predominating colors are golds, silvers and beige. One of the most enjoyable things about our house is our black poodle *Sanka*, so named in the hope that he will not keep us awake nights.

I believe much of our troubles come from fatigue. There is no better place to rest and recollect oneself than at home. I try to develop calm and not to talk too much and read something of a spiritual nature for at least 15 minutes a day.

There is no place so fitted for fellowship as home. Our married daughter Mary Frances and grandchildren are in and out without ceremony during the week. Our daughter has defined the "magic" of our home as "integrity" and I have always kept her confidence, I think.

A favorite maxim of ours that we strive to live by is one concerning moderation. Someone once wrote, "moderation is the silken string drawn through the pearl chain of all virtues . . ." I believe in moderation in diet and in all habits. Exercise is important. I used to play quite a bit of golf but never had time to practice. Today I walk and do the Canadian Air Force Exercises for Women.

I have combined a career with marriage and family. I think a woman's interest can successfully be managed apart from her home if she is constantly *aware* of that interest or career. For two people to establish a happy home, marriage isn't a give and take . . . it's strictly "give." Unless a woman thinks clearly, unless she can wisely channel her interests away from home, she had better not wander far.

I have a system for reminding myself of the importance of time. On my desk in the library is a flat engagement pad — 30-31 days seen at a glance. This I prefer to turning pages, as I can tell with one look if I am overdoing my schedule.

Every afternoon around four o'clock is "time to myself time" for meditation and hopefully a little rest.

Suddenly it's



FACILITIES FOR SPORTS, games and swimming as well as more sedentary pastimes can be accommodated here. A long, tile-topped counter which runs beneath the dining and kitchen windows simplifies buffet-style service

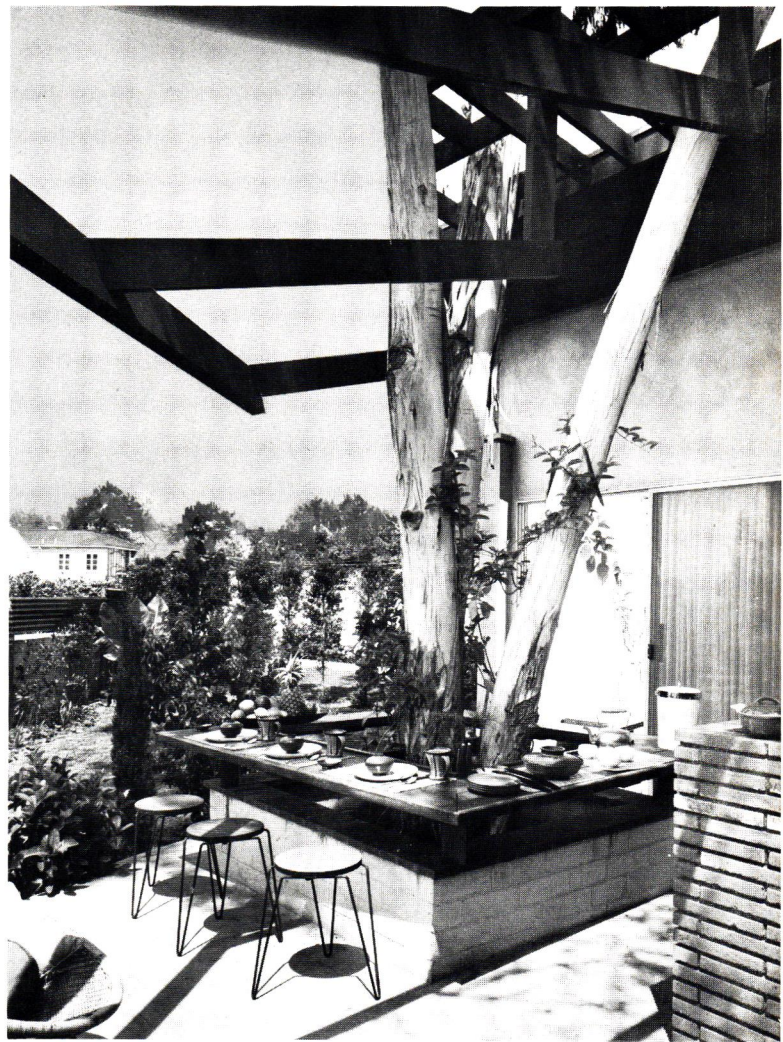
SHULMAN, SIMMONDS, LISANTI, HARTLEY

A VIEW isn't a necessity but it certainly adds a delightful dimension to your airy living room. A raised deck serves for lounging, hospitality and for family meals



SUN TIME

TAKE one summer-printed day, add one comfortable terrace and you have a recipe for leisure that's hard to surpass. When the light crackles with sunshine, wouldn't it be wonderful to step into any of these outdoor living rooms? Take your choice . . . simple or sumptuous. Any one of them can add the missing ingredient to your own secret dream of lazy living.



A CONVENIENT LOCATION will make meal service more pleasant if food can be handled without too much effort. This table built around a tree is just steps from the kitchen and has barbecue facilities and a rotisserie

WEATHER-WISE construction should be your aim. This textured concrete terrace will never lose its new look. Neither will the concrete brick wall. This quiet setting faces a lovely view and is accessible from several rooms

The new NEW ENGLAND Look

Stone conspires with the new Yankee spirit to create an effective portrait of modern simplicity.

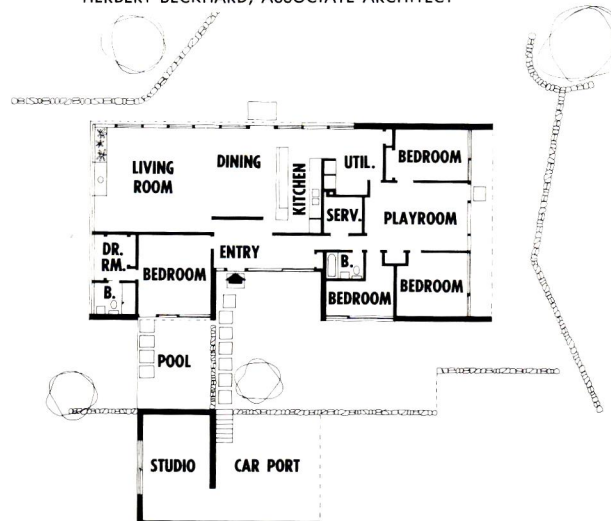
SALT BOXES and Cape Cod cottages still line the streets of New England. But, sprouting up among them are homes like this one . . . homes in stark contrast to the architecture most of us automatically relate to the region. However, if you will look beyond the low profile of its roof line, beyond its vast expanses of glass you'll discover that actually the traditional and the contemporary are *kissin'-cousins*. There is nothing new about the shared New England sense of security born of strong lines and sound native materials, and both have the same dignity, the same appreciation for fine proportion and restrained detailing. What is new is a plan which, because of its greater size, can be zoned into areas that insure more privacy for all age groups. New is the concern for easier maintenance and lasting good looks. New, too, are the low, ground-hugging lines and the manner in which the design balances great planes of transparent walls with equally impressive panels of massive masonry.

Cape Codder or contemporary . . . both have enthusiastic disciples. Both will continue to charm prospective home builders because both offer an ample measure of comfort and simple elegance.

BY AVA LOUIS



MARCEL BREUER, ARCHITECT
HERBERT BECKHARD, ASSOCIATE ARCHITECT



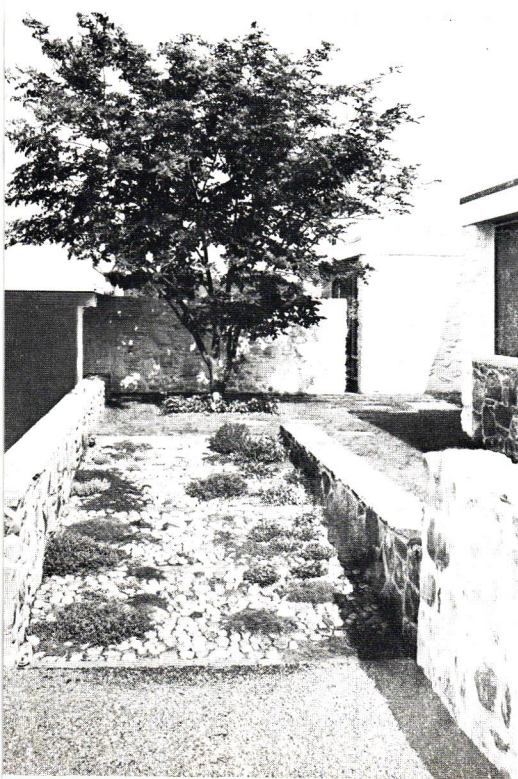
The combination of pla and painted stone unique. Low, natural ro walls frame a walk of large river-smoothed pebbles ar direct you into the e trance courtyard ar around a corner to the sp cious front entrance ha



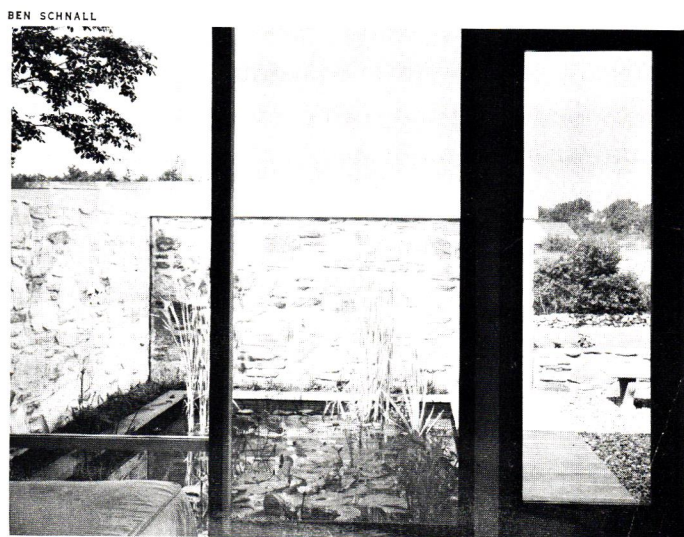
The native stone is a natural link between house and setting. Unlike most other building materials, it grows more beautiful as it develops the mellow patina of age

“Working walls” partition the central area. A tall bookcase screens the entrance from the living room and a lower counter-storage unit hides the view of the kitchen

Inside all walls are white. Radiantly heated floors are surfaced with red quarry tile and ceilings, with the exception of the baths and playroom, are natural cedar



Reserved for the master bedroom is a charming lily pool and a secluded graveled terrace. Parents' and children's quarters are wisely located at opposite ends of plan, zoned for silence



Every home needs a touch of



Tile and a sizzling color scheme provide gay decor for games, partying or picnicking. A barbecue pit is recessed into the long tile bench spanning one wall of enclosed porch

BY DONNA NICHOLAS HAHN





STANIK, CLEVELAND, DAVIS



Wallpaper gives the effect of a library well stocked with books. Actually they disguise the folding doors of a closet. The graceful provincial desk is painted to match the paper

Thomas Carlyle campaigned to save the arts from a malady he called "Dryasdust". It's suspected however that he only drove the weakness underground since it appears frequently in otherwise sound decorating schemes. If you spot signs of languor in your decorating, attack it with a little whimsy.

Your personal battle plan may be as simple as the addition of one capricious accessory . . . the tiger skin or the pictures in the room . . . or as involved as the tiled seat and floor of the dramatic porch . . . Launch a gay offense against drabness. You'll be delightfully surprised at the result of your daring.

The bedroom wardrobe door is painted two colors. The large chest is restyled with white paint and teal green ovals. Add one frankly fake tiger skin and a septet of colorful pictures and you'll have a room to remember

If you know a cook with a **GREEN THUMB...**



KENT VITTEGL, HANS VAN NES

A remodeled kitchen now has its own greenhouse with glass windows separating areas. The door, at left, opens to a porch from which one may walk into the garden center. It's possible to maintain ideal temperature and humidity

A greenhouse, just around the corner from the range, has its own sink and recessed gravel beds for potted plants. Under the bench are planting supplies. Practical vinyl carpet extends from the kitchen into this work center

PROMISE HER ANYTHING BUT GIVE HER A GREENHOUSE. A very small greenhouse will do, if it adjoins her kitchen. Chances are that she's an ardent cook who delights in adding just a snippet of chives, a few leaves of sage or a whisper of some other herb to her creations. Think how much more she would enjoy picking seasonings fresh from her own year-round garden.

One of these greenhouses is little more than a wide window sill flooded with controlled light from slanted windows. The largest, just four by eight, is a walk-in greenhouse located where a back porch used to be. All may be reached directly from the kitchen. Each will give her space enough for a few potted plants and flowers with room left over for starting her own stock in flats.

If, of course, you feel she would prefer more space, there's a choice of prefabricated units which may be attached to house or garage or may be installed as separate units.





This multi-purpose area serves as a greenhouse or lounge area. The counter is surfaced with durable plastic. Striped shades of the skylight windows eliminate curtain ironing and give precise light control

A SHOPPER'S REPORT

Color matched furniture and walls New custom colors for furniture and walls should unlock a decorating treasure for the homemaker who likes close coordination in furniture and background colors. A leading furniture company now gives you a choice of 262 custom colors for your furniture. Then your painting contractor can obtain a precisely matched tone of paint for your walls and woodwork. Presto! A true professional touch.

Easy-clean range top Cleaning the kitchen stove is almost always an unpleasant task, so news of anything which can simplify the job should be spread and spread quickly. A new counter range unit has a tilt-up top with an enameled finish. Individual shallow-dish wells beneath each burner catch inevitable boil-overs. A damp cloth or sponge is usually all that is needed to keep this hidden, though important, area spotless.

Washable leather walls Most of us would delight in the prospect of something entirely new for our walls. Leather is not a new material but washable, warp-

Camouflaged air grilles

Textured floorings

New spray-on coating for leather or vinyl

proof leather wall tiles are. Either 6 x 6 or 12 x 12 tiles may be selected in 18 colors.

A newly introduced perimeter air diffuser blends inconspicuously into its setting. It's finished in random terrazzo pattern enamel and is available in neutral tan and in six standard sizes. Diffusion of air is controlled by fins.

With new, thin-gauge resilient floorings, imperfections in the base floor beneath are quickly revealed by any light on the smooth, polished face of the new tiles or sheet goods. Several manufacturers are now able to minimize this headache with new rough textured patterns which defy discovery of small flaws.

A new spray-on coating can renew the fine appearance of your leather, vinyl or canvas. Upholstery, book bindings, luggage or clothing can be treated to this flexible, water-repellent, weatherproof finish which actually softens leather or vinyl. Take your choice of 26 colors. It will cover cracks and scratches.

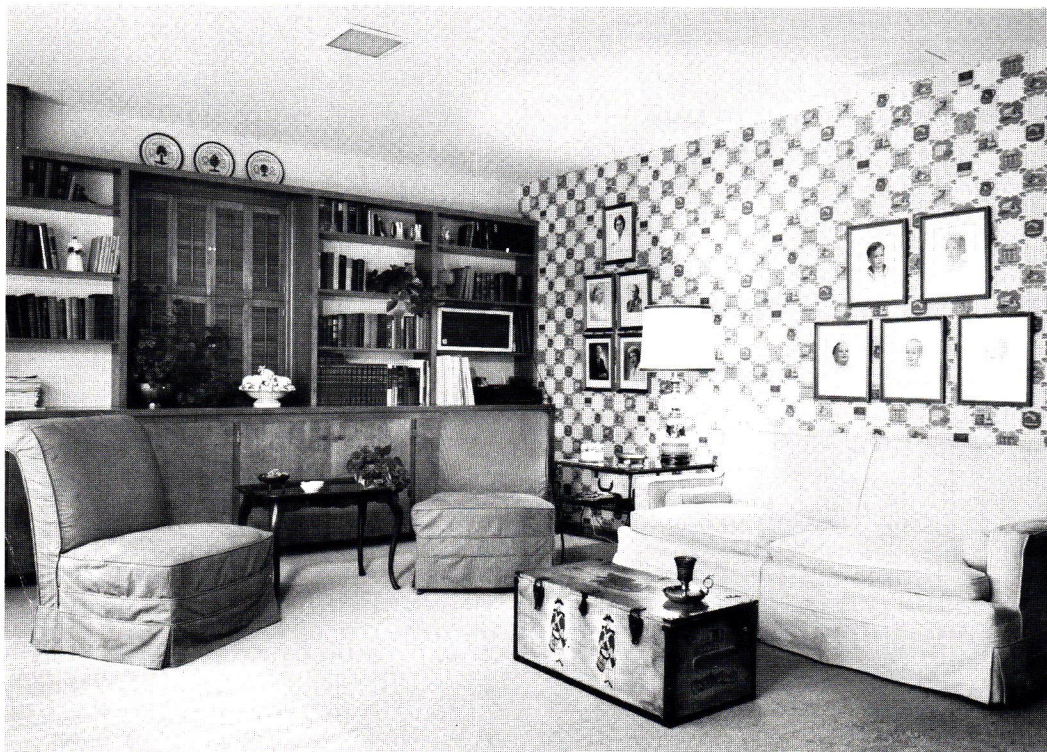
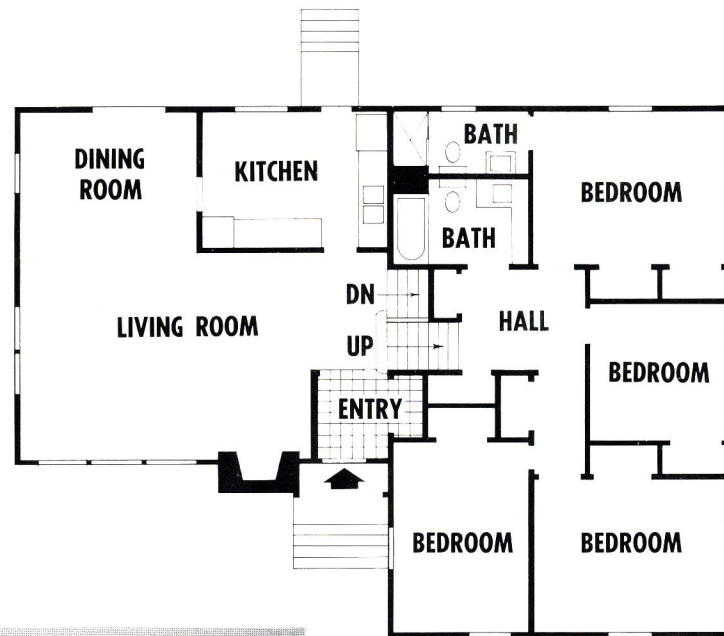
Good From Any Viewpoint

LOOK UP THE slope at the front of this home. The contrast of red brick against white siding and painted ironwork is crisp and neat in the sun. Stand at the top of the rise and look down into the yard. Obviously, outdoor living is important here. When the weather is bright and clear, lounging and meals often move onto the terrace. When more protection is in order the screened porch can accommodate a party or a pair.

Inside or out, the story is one of gracious living. Step through the front door. Look beyond the turned spindles which define the front entry and you see a spacious and serene living room.

It's just a few steps up to bedrooms or a short flight down to the family room. The architect succeeded in planning a home with appreciation for tradition as well as for more recent design trends. It's certainly an engaging and truly charming house.

BY DONNA NICHOLAS HAHN



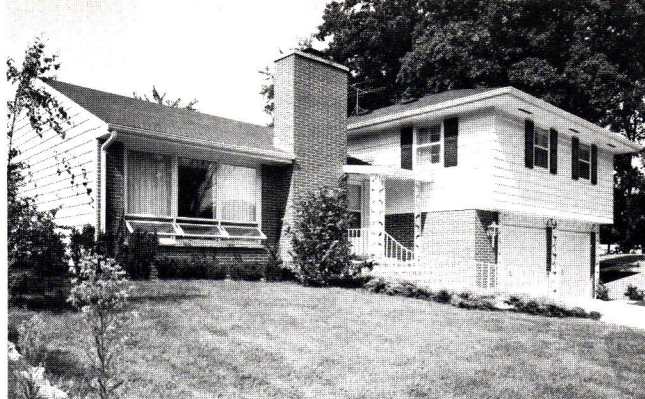
Restrained patterns and quiet background colors contribute a restful air. Off-white walls and carpet and antique white furniture set off the dark wood of two French chairs and blue and green English floral print of the sofa.

The family spends most of its leisure hours in the family room. The children insist it's theirs, but large windows and a pleasant view lure parents and guests as well. The coffee table is actually a toy chest. Cupboards conceal sound system and air conditioner.

To preserve the mood of traditional styling, close attention is given to all details. Typical of this concern are the louvered doors separating living room and kitchen

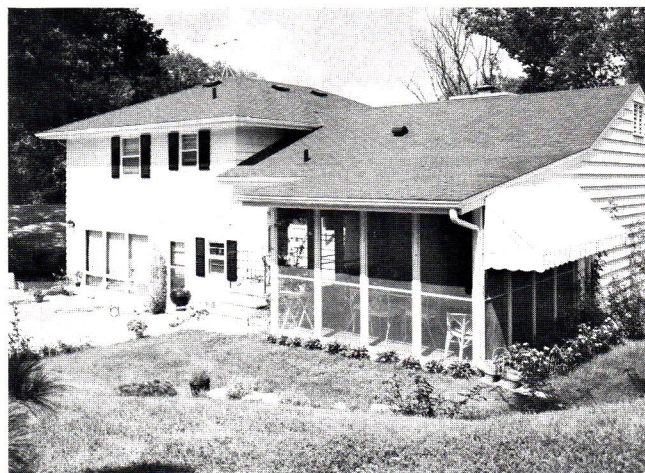


A generously scaled coach lantern symbolizes the inviting manner of this split-level home. Lacy iron trim, in an oak pattern, echoes the motif of magnificent old trees encircling the setting



WILLIAM WALLACE

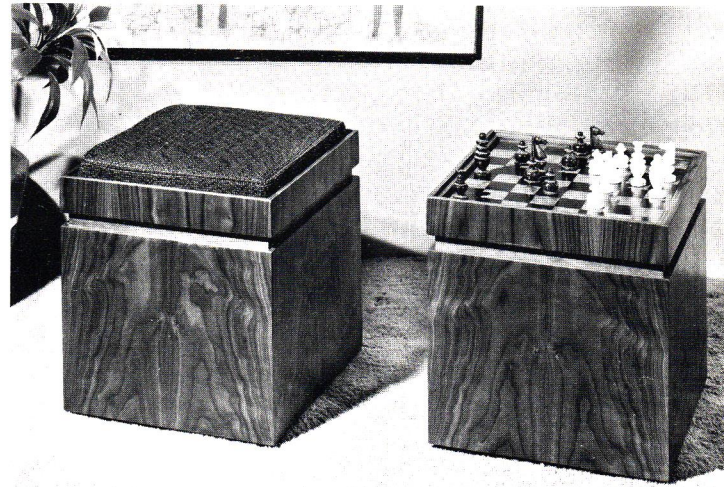
Cooling breezes are only one of the rewards of this screened porch. A view into the pines and oaks, a pleasant terrace and flowers await anyone who lingers a minute or an hour



COVER PHOTOGRAPH
The simple white painted brick fireplace could have been either formal or informal. Furnishings lean toward the formal, but retain the charm of comfort



Multi-purpose cedar chests have chess-board top that flips to make cushioned seat. Inside there is space for magazines or records or for other storage

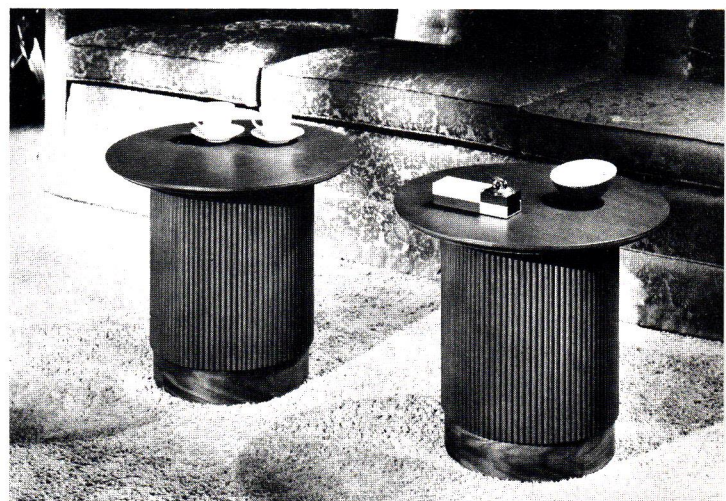
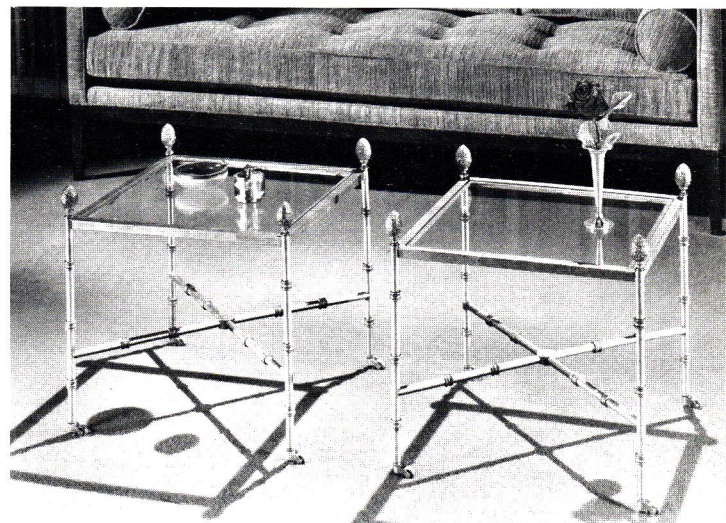


Tea-Time TWINS

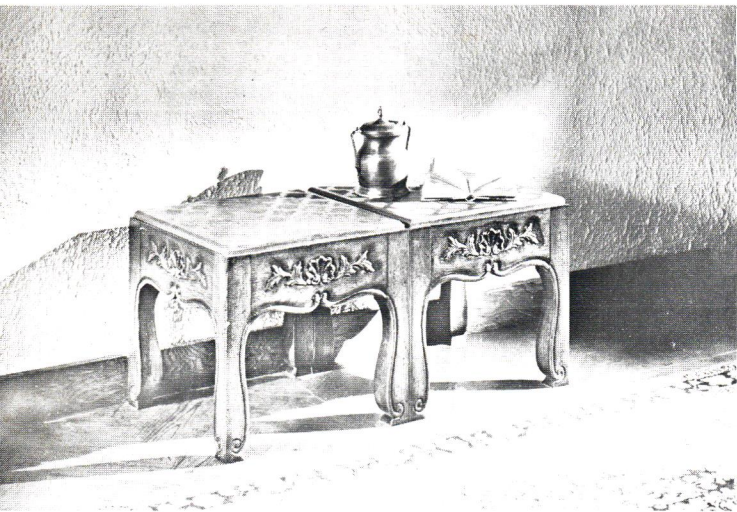
YOU MAY NOT panic when faced by the possibility of manipulating a brimming teacup and a saucer while concentrating on polite conversation . . . but most of us are far more poised if we know there's a table close by. It needn't be large. Just big enough to receive a china offering from your trembling hand.

The five pairs of small tables seen here are the answer to restricted space and budget. Used together they function as a coffee table, but they are just the right size for moving easily to where they are most needed. Each is sturdy. Each is handsome and each is made more dramatic by being half of a busy and versatile twosome.

The perfect little table in Chinese Chipendale is unconventionally fashioned of metal with an antiqued gold finish with pineapple finials topping corners



Tambour sides give snack table classic appearance tempered by classic convenience. Base and top show graining of walnut wood painstakingly matched



Twin bunching tables feature handsomely carved aprons and etched tops of a material resembling slate. Use one as a snack table or several as a bench



Simple marble columns are versatile, serving as cigarette, cocktail or end table. May be fitted with a circular glass top or be used as emergency seats

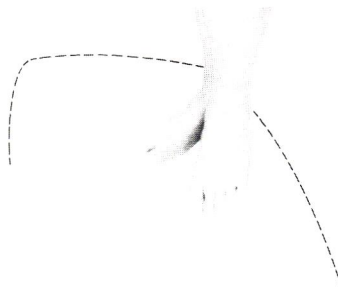
BETTER WATCH YOUR STEP



THREE LARGE manufacturers, with an eye on the very young and very old are simultaneously offering new non-skid surfaces to make bathtubs, stairways and utility mats safer. The bathtub's foot-gripping surface (outlined in the photo) is not an accessory. It's a section of the tub bottom, textured to help keep wet feet from slipping.

The stairway is protected by a durable, waffle-patterned plastic overlay. This thermo-setting plastic is not affected by water or other liquids and does not obscure the wood or hardboard onto which it is laminated.

The vinyl backed utility mat remains flexible, floor-hugging and exceptionally safe because electrostatic attraction actually makes it cling to the floor so that a slight pull is required to break contact. Edges stay flat.



P.O. Box 911
Cedar Rapids, Iowa 52406
Return Requested

FRED MEYERS
762 OAK STREET
RIVER PARK
FT PIERCE FLA

Bulk Rate
U. S. POSTAGE
PAID
Cedar Rapids, Ia.
Permit No. 31

PH-1253-D-161

PERFECT HOME is being sent to you through the cooperation of these outstanding organizations whose materials — skills or services make every Schenandoah Home a superior quality product which you may own through the years with pride.

PETE & BRUNO **TILE & TERRAZZO**

Tile — Terrazzo — Marble

3311 Oleander Ave. Phone 464-2280
Fort Pierce, Florida

MOORE'S **APPLIANCE**

Hotpoint Appliances — Fedders Air-Conditioners

114 South Fourth St. Phone 461-7330
Fort Pierce, Florida

KEN STONE & SON PLUMBING CO.

Plumbing Contractors

Residential — Commercial

1119 Alameda Ave. Phone HO 1-0632
Fort Pierce, Florida

TOM PETERMAN HOME SUPPLIES

"Largest Carpet Outlet In St. Lucie County"

Floor Coverings — Home Specialties

2803 Orange Ave. Phone 464-2481
Fort Pierce, Florida

DAVID SCHENANDOAH, BUILDER

"Custom Styled Home Construction"

322 Olive Ave. Phone 461-5944
Fort Pierce, Florida

DOMESTIC AIR

BILL HEGER, *Owner*

HEATING AND COOLING

AIR CONDITIONING CENTRAL SYSTEMS

P.O. Box 142 Phone AT 7-0693
Stuart, Florida

THE HIGHLITER

Wholesale Distributors

Residential and Commercial

Lighting Fixtures and Supplies

Searstown Shopping Center Phone 461-2903
Fort Pierce, Florida

*I think we should not hesitate to spend what money
we can on our homes — not pretentiously, but to
make them right for us, and a place to which our
friends will like to come. — SUSAN GLASPELL*