

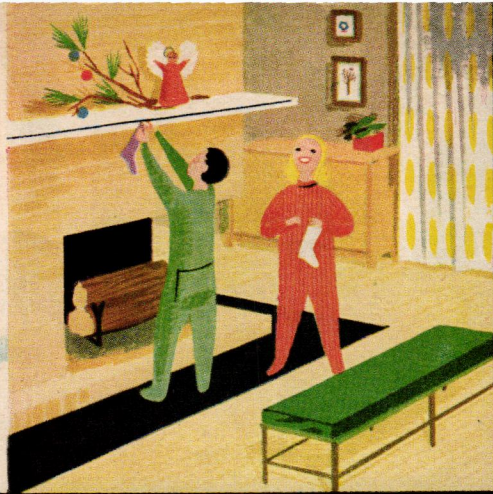
POPULAR HOME



Holiday Issue 1951

*To You and Yours
good cheer, good health
and good fortune*

Oakridge Builders Supply Co.
Oakridge, Oregon



May
the spirit
and joy of
Christmas
live in your
house throughout the
coming year...and always



MERRY CHRISTMAS ...
HAPPY NEW YEAR



Christmas . . .

Many Customs but One Meaning

It's Christmas Eve! In France the little ones dream of Pere Noel; in Germany, of Kris Kringle; in Belgium, of St. Nicholas. In Iceland Santa comes in the form of a tiny elf. Syrian children have no Santa Claus, but they leave bowls of grain and water outside their doors for the weary little camel that accompanied the Wise Men.


It is an old Irish custom to place a candle in the window on Christmas Eve to light the Christ-child on His way. In Czechoslovakia tiny candles are set upright in nutshells and floated in pans of water. In Norway, families carry flaming torches to church on Christmas Eve, leaving them stuck upright in the snow during services. Christmas Eve dinner is not served in Poland until the evening star shows in the heavens. At midnight mass in Peru, boys carry whistles and rattles to display their skill imitating bird and animal sounds.

Even the birds have Christmas trees in the Scandinavian countries—bundles of straw tied to top of poles. The Yugoslavian peasant wishes for good fortune by throwing a coin, corn, salt and honey on a burning yule log, then casts walnuts to the four corners of the room—the four corners of the earth from which Christmas comes. In Greece, special bread is baked with a cross on top and a silver coin concealed within. When the loaf is divided, the first section goes to the patron saint of the home, and the lucky member of the family is the one who finds the coin in his piece. Starting on Christmas night, Rumanian boys sing carols from house to house, carrying a wooden star covered with colored paper that bears a picture of the Holy Family in the center.

The hopes and beliefs of people in other lands are much like ours—even in the minds of children. They, too, yearn for peace and freedom from fear.

Never have our prayers been more urgently needed for peace and happiness *throughout* the world—the universal meaning of Christmas.

Charles A. Lacyman
Editor



Here's a gift everyone
will enjoy . . .

A Family Room for *Your* house

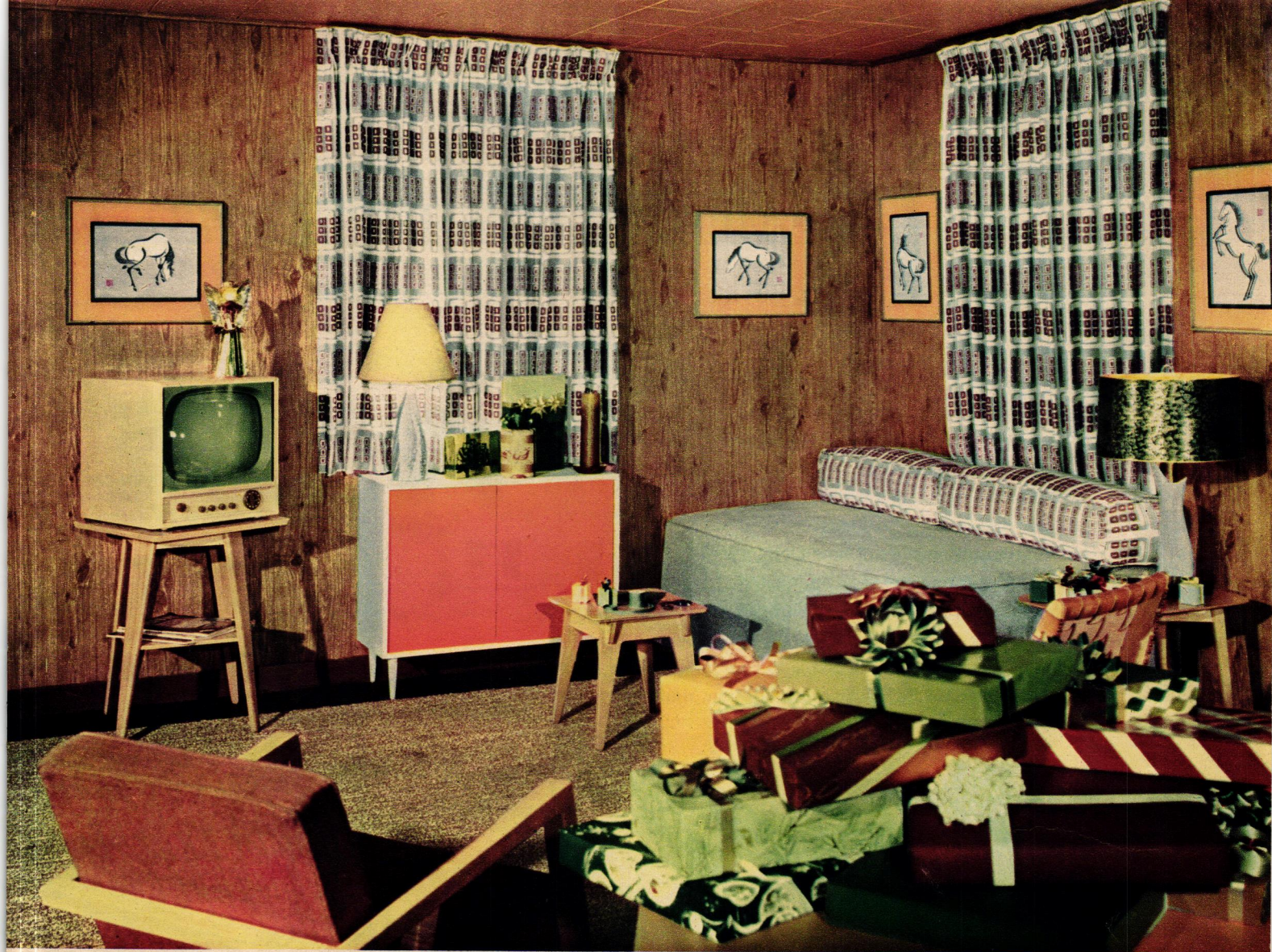
CHRISTMAS is the time when the close ties of family life are most important and most appreciated. During the holidays this year, just ask yourself if your family's *happiness at home* is really complete. You're likely to find you can improve it by providing the *place* where the children can entertain their friends without disturbing the rest of the family, where father can retire for some quiet reading, or where mother can relax with a favorite television program. And it still can serve overnight guests.

It's a *family room* that fills the bill—a room that *you* can have, perhaps with a surprisingly small amount of "face-lifting". It needn't be large, and it might be converted from an unused bedroom, an old-fashioned parlor, a little-used den, or an oversized dining room. Your community USG building materials dealer will tell you that a wall surface of Woodgrained SHEET-rock wallboard will give your family room the richness, warmth and fire-resistance it deserves. You have a choice of the three lifelike, economical finishes shown on the page at the right: Planked Walnut, Knotty Pine, and Bleached Mahogany.

Few gifts could mean more to your family's comfort and enjoyment for years to come—at home.

If you want something extra-special for your "family room" or recreation room, build a Roll-around Snack Bar. How-to-do-it instructions are in POPULAR HOME Photo Plan 51-8, yours for 10 cents from firm named on covers. Handyman feature No. 2 is How to Make a Shoe-Shine Box.



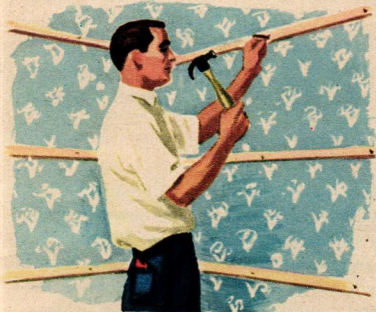


DECORATOR: RUTH W. LEE

CHRISTMAS DECORATIONS: CHICAGO PRINTED STRING CO.

Here's a family room that also doubles as guest room—and you'd never know it formerly was just an idle bedroom. Planked Walnut SHEETROCK finishes walls with no further decoration needed, also covers old walls that had deteriorated badly in places. New ceiling is of QUIETONE acoustical tile. Furnishings include Sliding-Door Cabinet with orange-painted doors and HandiTop stool-table (center). Both are available as knockdown kits through your local POPULAR HOME sponsor.

Here's how easily it's done . . .



New walls for old. Woodgrained SHEETROCK wallboard covers old plaster. First step is to nail horizontal wood furring strips through plaster to wall studs. Furring is unnecessary if old walls are smooth.



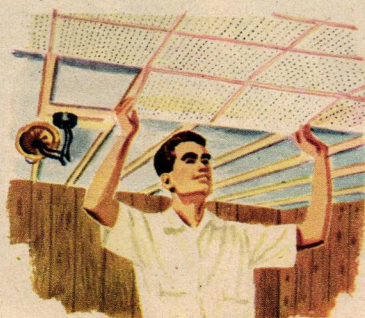
Woodgrained SHEETROCK panels, 4x8 feet in size, are butted edge to edge, nailed to furring strips with USG 4d Colored Nails, finished with wax or varnish. No joint treatment is necessary.



Bleached Mahogany



Planked Walnut



Beautified and sound conditioned at the same time, old ceiling gets new Twin-Tile QUIETONE acoustical tile applied to furring strips 12" apart. Tiles are 12x24 inches, have tongue and groove edges.



Knotty Pine

REMODEL *to look your holiday best*

TOWN OR COUNTRY, city street or a wooded lot, in a rambling old house or a crowded apartment

—it is possible to create a comfortable and convenient setting for living.

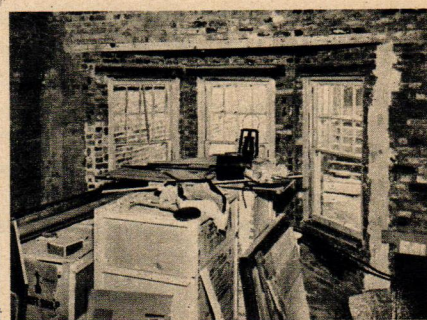
Here is an inspiring story of how Designer Paul MacAlister remodeled an antiquated coach house in a congested neighborhood.

True, you may not have a coach house to remodel, but you'll find these ideas adaptable to your house, old or new. Let your home wear its holiday best—all year 'round!



Before. Remodeling started, showing addition of new bay window to front wall.

After. Double door leads to living quarters for two families. White CEMENTICO paint over brick, balcony grillwork and a winding walk invite the visitor to come in.



Before. New bay window, formed of stock sash readily available from lumber dealers, added light and ventilation to living room.

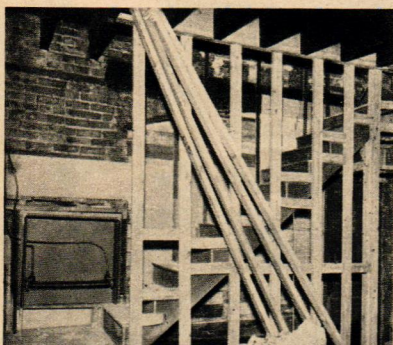
After. A perfect setting for Christmas and all through the year, with color scheme of medium green, gray and vermillion. For holidays, large candle between chairs and pair of Swedish-type candelabra replace lamps. Rib-boned boughs and ornaments in window, small tree in bowl on table complete Christmas decor. Permanent cornice in bay is made of DURON Hardboard bent into curve.



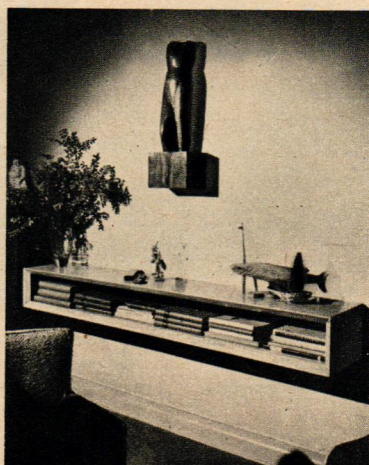
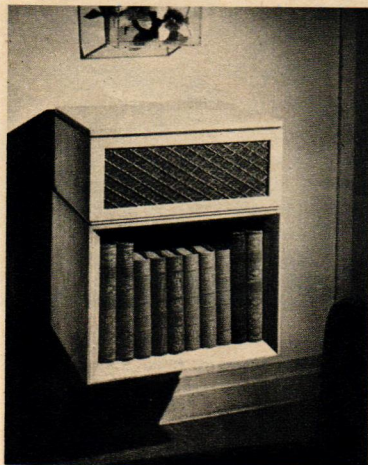
... all year 'round

*Give Your Family
a Home to be Proud of—with Comfort,
Convenience, Safety and Beauty*

by Cynthia Montgomery



Before. New stairway was installed with structural supports exposed for decorative effect and to borrow light for living room.



To suit home's compactness and need for storage space are two fastened-to-the-wall cabinets, one for a record player and album storage. No furniture legs to vacuum around!

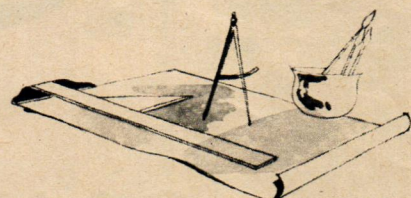
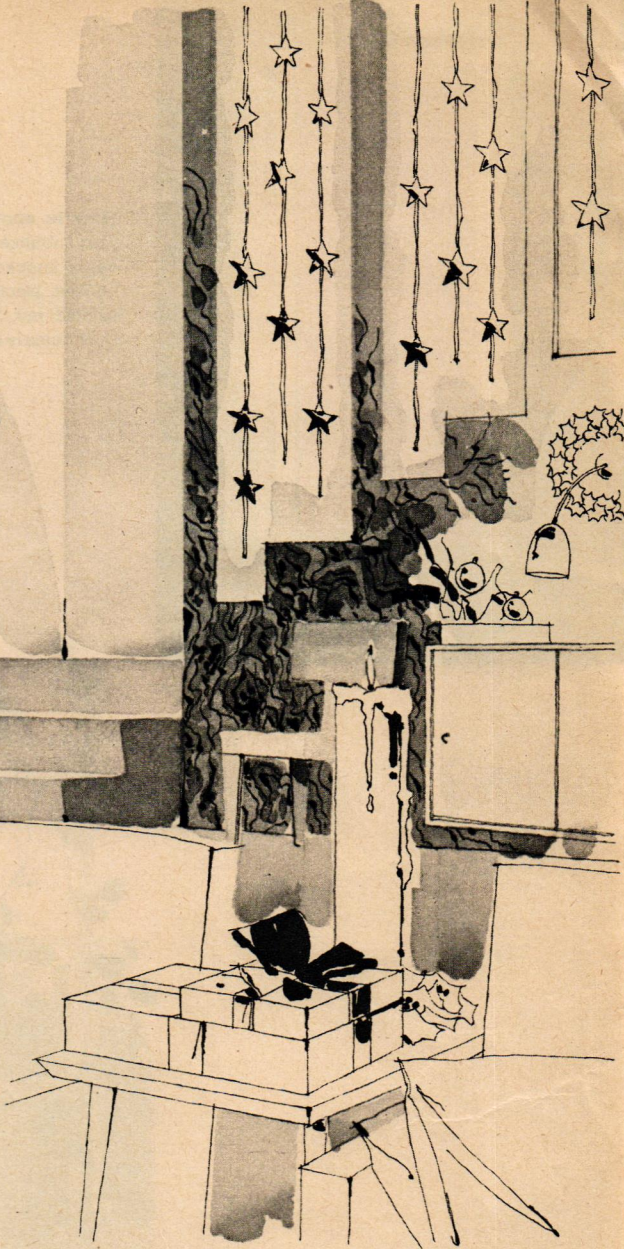
Who's Who? In addition to handling the interior design and decoration of hotels, offices and houses nation wide, Paul R. MacAlister has served as consultant in color and design to several home furnishings manufacturers. Mr. MacAlister has two television programs on home planning, heads his own firm, is a member of American Institute of Decorators and national president of Industrial Designers Institute.



Continued on next page.



After. Packed with ideas, stairway end of living room capitalizes on structural features with green marbled wallpaper covering stair wall and vertical supports. Glittering metallic Christmas stars are hung on fine thread between supports. The bell-pull decoration on wall is a paper "angel" with metallic paper skirt, wire halo, and pine boughs to which Christmas tree ornaments are attached.

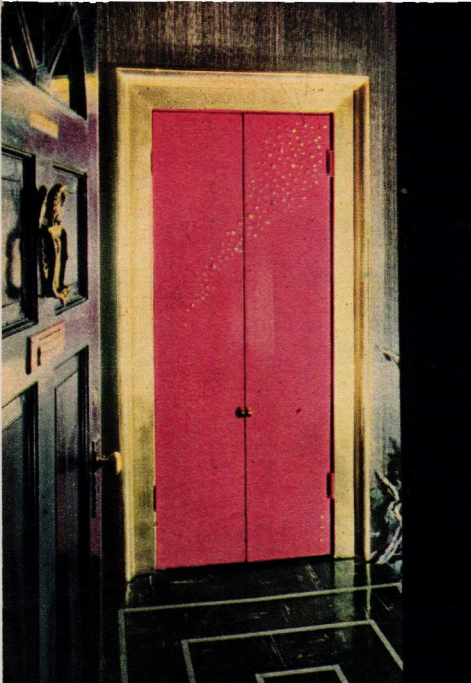


Here's why good home planning pays:

More often than not, the services of a professional person—designer, builder, architect or decorator—are paid for by the good planning that is the result of experience, training and skill.

POPULAR HOME believes that the professional person with real talent . . .

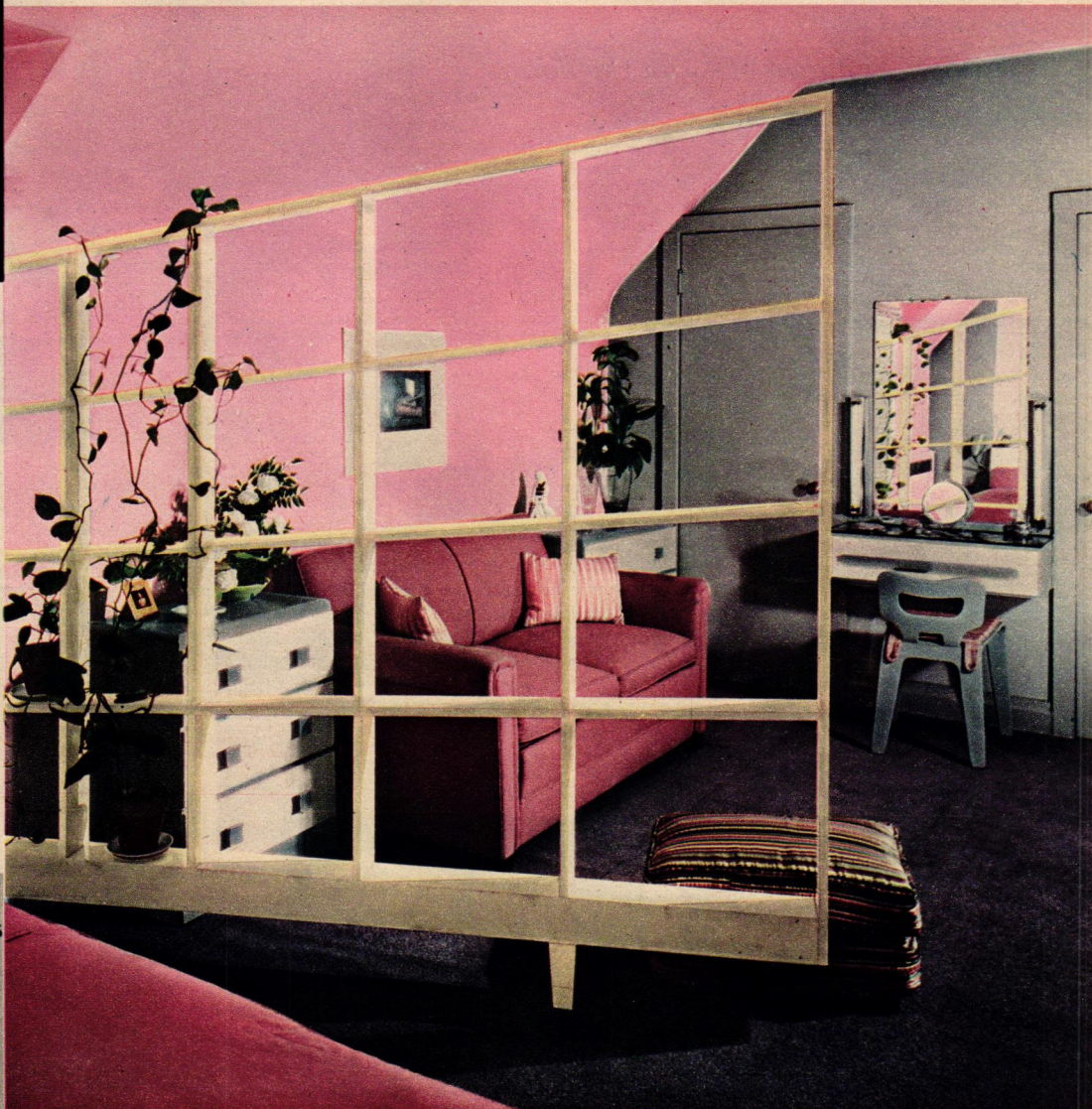
- is practical
- studies housekeeping problems
- has an eye for beauty
- uses color in dramatic ways
- creates ideas that look right but serve a purpose
- can be budget conscious
- sees possibilities in enhancing simple things
- specifies quality building materials
- knows good construction
- has a sincere interest in people and their needs



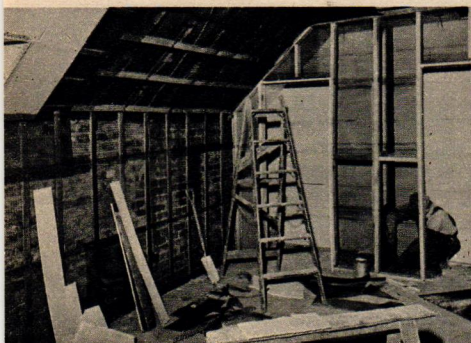
How to show your own creative talent in your entrance hall is demonstrated here. An eagle knocker sets off Paul MacAlister's brilliant black painted door. Closet doors, painted red, are splashed with gold stars. Door frame is designed like picture frame.

REMODEL to look your holiday best... Continued

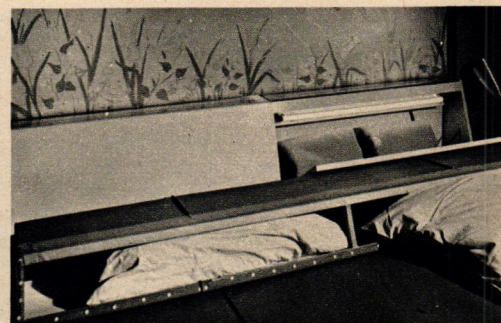
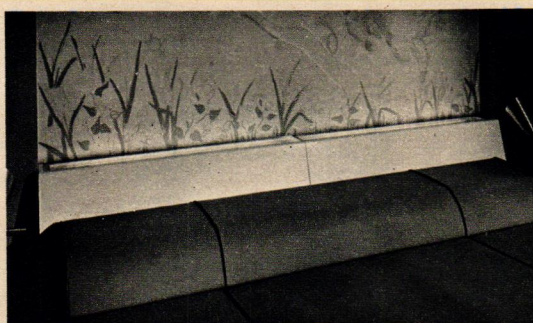
HEDRICH-BLESSING



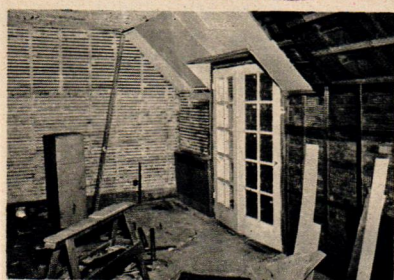
After. Latticed partition in bedroom, built of 1x2's with boxed-in bottom, is decorative note to give a feeling of separation between "bedroom" and "sitting room-dressing room". Dressing table, between closet doors, is made of a drawer inserted in a case and hung on wall. Painted chests form useful end tables.



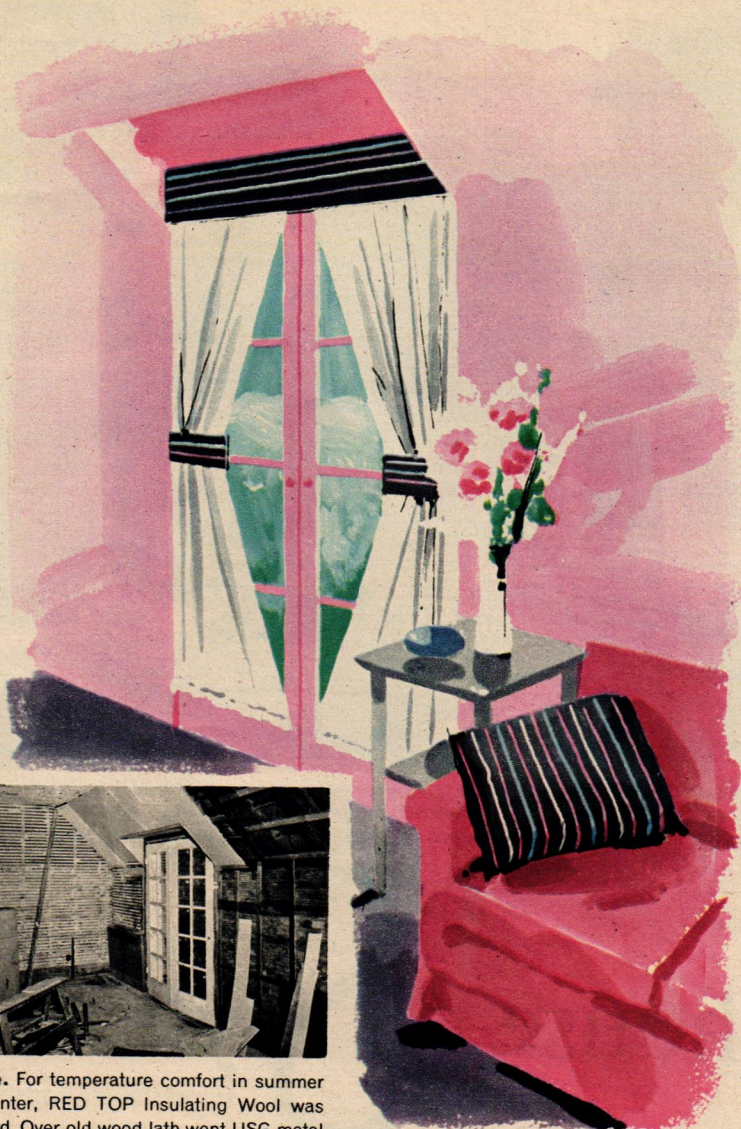
Before. Early step in construction was installation of USG Color-Rite metal lath to form base for Red Top plaster. Result: smooth walls and ceiling shown in color view of bedroom.



Twin mattresses with box springs on legs, covered with a single spread, have a double-box headboard. Fluorescent lights under fluted glass illuminate wall above. Bolster opens in back for pillow storage.



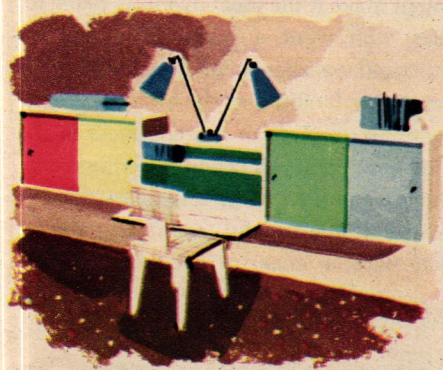
Before. For temperature comfort in summer and winter, RED TOP Insulating Wool was installed. Over old wood lath went USG metal lath and ROCKLATH plaster base.



Closet decoration combines utility with color spice. Striped wallpaper was applied on all surfaces and lacquered. Chests hung on wall were bought unfinished.

After. This effective treatment of French doors in bedroom, suitable also for inward-opening French and casement windows, has a secret—separate rigid cornices and tie-backs on each door made of DURON Hardboard and painted with multi-color stripes. Shirred marquisette curtains are fastened to rods at top and bottom.

Christmas presents to delight their owners every day of the new year need not be expensive. Here are Paul MacAlister's ideas using inexpensive unfinished furniture and knockdown kits.



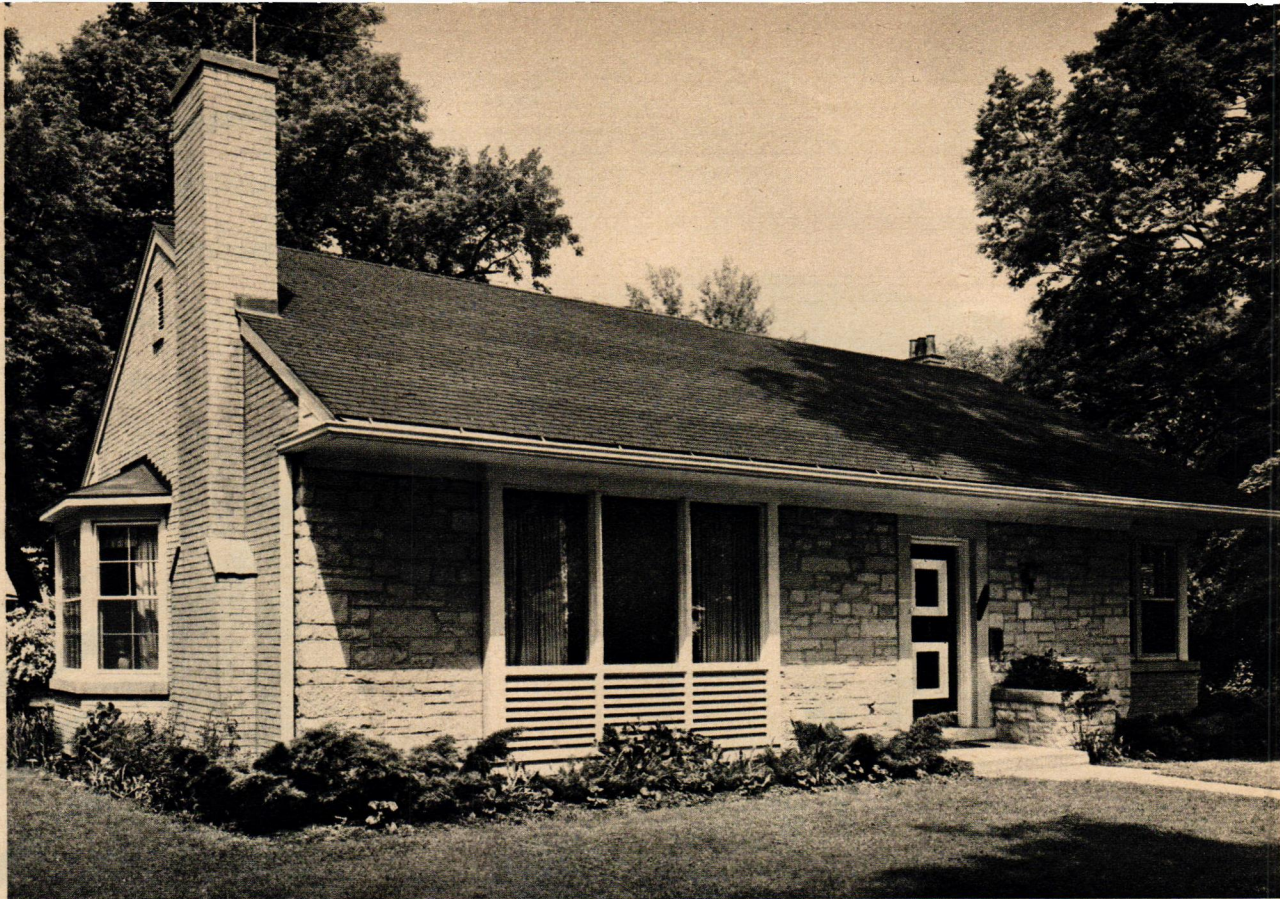
So, he doesn't keep his room picked up? A boy needs places to store his belongings. Let him build a simple shelf-desk and flank it with two sliding-door cabinets that come as knockdown kits through firm named on covers.



Your fluffy-type daughter will be enchanted with a new vanity bought unfinished and covered with ruffled organdy curtain skirt that uses both sides of curtain. Stool is the POPULAR HOME HandiTop, another knockdown kit sensation.



And for mother, why not make a dining room wall grouping of three POPULAR HOME Sliding-Door Cabinets? In one cabinet, sliding glass doors have been substituted to display china. Top of another forms serving counter beneath mirror.



Shaded by roof overhang, front exterior of Small House of Style is finished in Lannon stone and gray brick, but siding of GLATEX Asbestos Cement Shingles could be used effectively at lower cost. USG Thick Butt asphalt shingles are ideal choice for roofing. Ventilation is controlled by hinged doors behind wood louvers under picture window.

POPULAR HOME'S

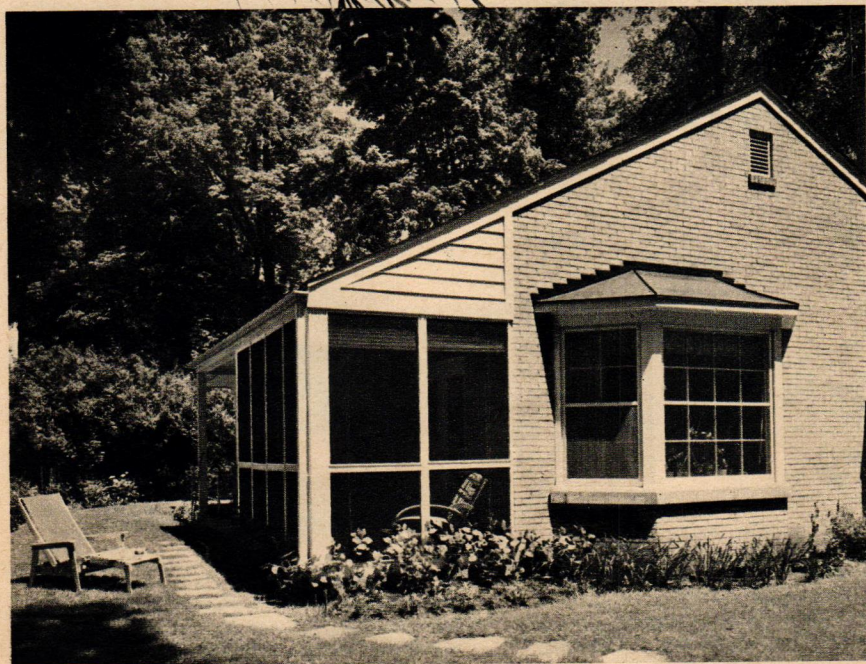
Small house of Style

Here's a charming house that's roomy in the right places

ON ITS GOOD BEHAVIOR all the time—for family and guests—is POPULAR HOME'S Small House of Style—one house that has the space, and the appearance, for gracious living. Two bedrooms, a separate dining room, an expandable attic and a full basement make it the ideal dwelling place for families who want a home of distinctive architectural excellence at a modest price.

The dining facilities in the Small House of Style are an example of its roominess in the *right* places. There's a separate dining room that many families seek, unsuccessfully, in today's small houses, and there's also a large kitchen with a cheerful breakfast corner.

Roof extension in rear is wide enough for comfortable screened porch, reached through double doors from dining room. Ready for relaxing, at left in photo, is POPULAR HOME Recline-a-Chair, the six-way-adjustable lawn chair that's available as knockdown kit through firm named on covers.



HEDRICH-BLESSING



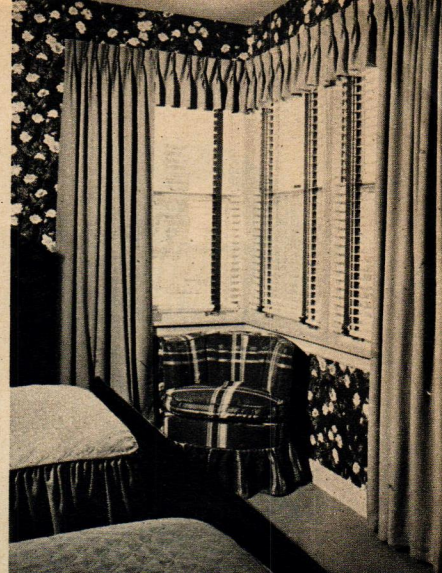
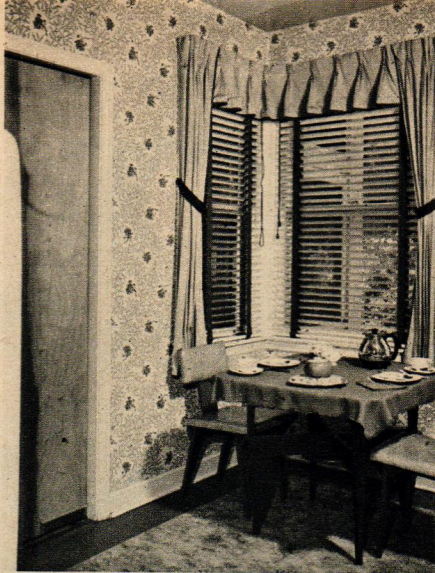
Attractive bay window in dining room is trimmed with draperies and valance of char-treuse textured cotton. Same color, with gray and red, appears in Chinese scenic wallpaper.



Best of all, these pleasant eating areas are provided without sacrificing needed space in the living room and bedrooms.

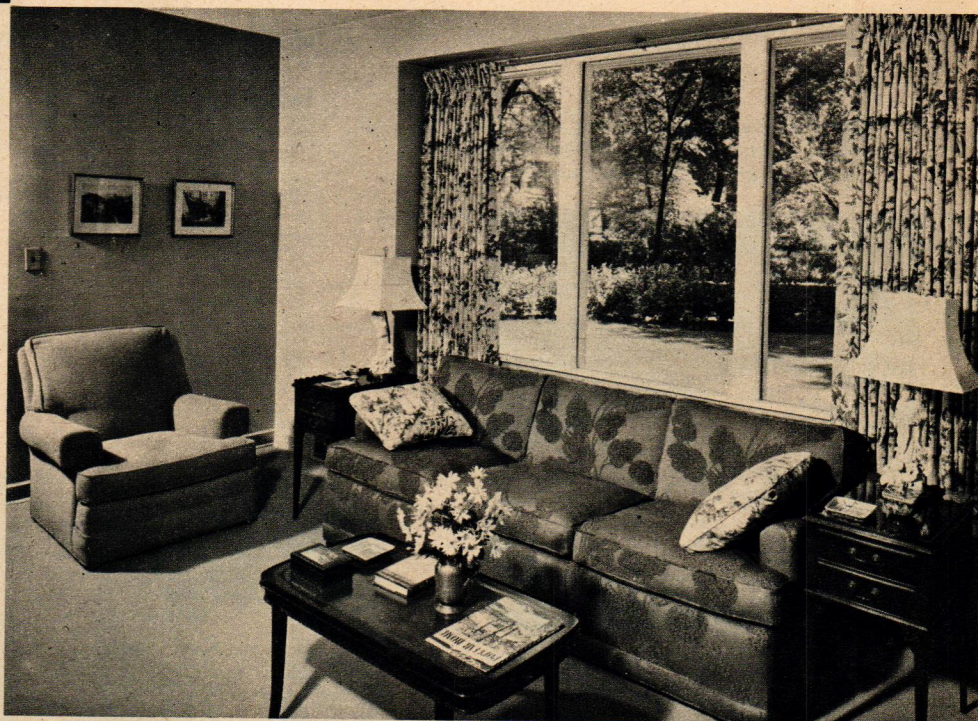
From the outside, it's a house that will hold its own proudly with the best residences in any community—as, indeed, it does among lakefront homes of many times its size in fashionable Winnetka, Ill. As designed by architect Henry L. Newhouse of Chicago, it will fit nicely on a 60-foot lot—one of the requirements of POPULAR HOME readers who may wish to build the house for themselves. Constructed soundly of quality building materials, it's a house that spells economical but comfortable living for years to come.

Small House of Style contains 1,260 sq. ft., 17,580 cu. ft. (excluding basement). POPULAR HOME Photo Plan 51-8, waiting for you at firm named on covers, offers more pictures, technical information on house—price 10 cents. Building blueprints for house may be ordered through your POPULAR HOME sponsor, from Henry L. Newhouse, architect, 23 E. Jackson Blvd., Chicago 4, Ill.

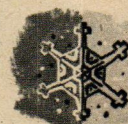
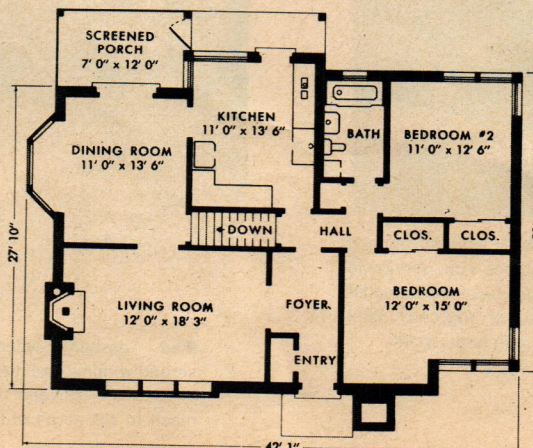


Architect's clever use of corner windows in house is illustrated above. Spacious kitchen, left, has breakfast corner of perfect size for POPULAR HOME Hi-Lo Table and Chairs, yours in knockdown kits. In photo above right, front bedroom, like rear, gets cross ventilation, and also has cozy spot for reading or sewing.

Decorator: *Keewan Sadock*
Data by *Ruth W. Lee*

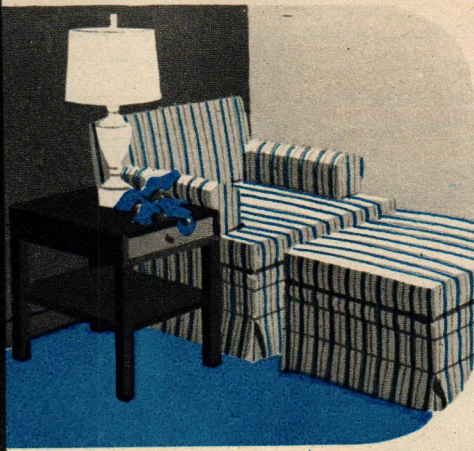


Light from 10-foot picture window brightens living room walls and ceiling. RED TOP plaster and ROCKLATH plaster base provide beautifully smooth surfaces like these for decoration with TEXOLITE paints. Cushions on red sofa repeat drapery chintz.

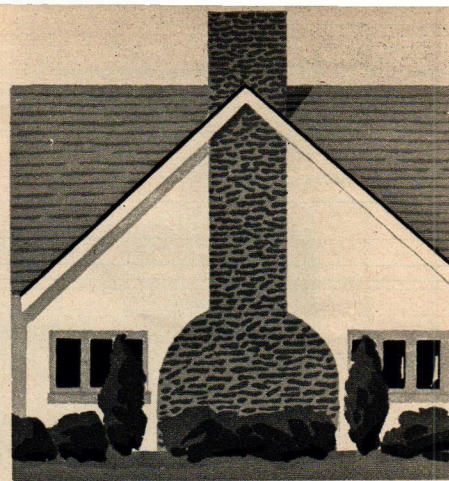




Bad. Comfortable chair but spindly table with too-small top, bad reading light. Diameter of lower rim of shade should approximate height of base for pleasing scale.



Good. More useful table has shelf, is similar in bulk to chair. Larger lamp shade of translucent material filters light for easier reading. Seat-height ottoman gives real comfort.



Bad. Bulbous chimney creates lack of proportion on side of this house. Shape is not symmetrical, while its size and texture overpower windows and other features.

Good proportion

and scale

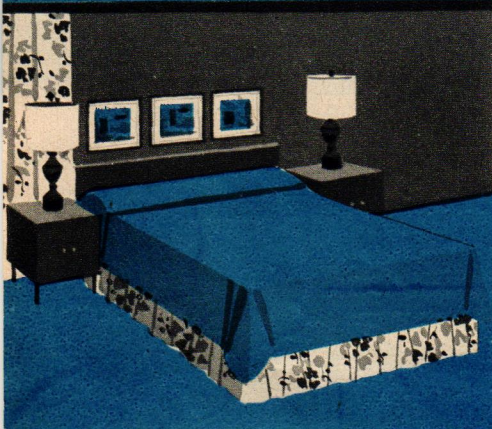
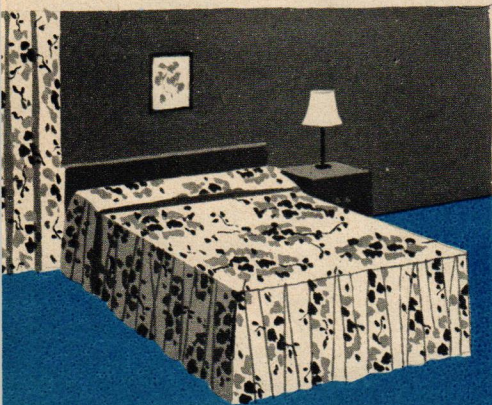
influence

WHY *you like* *what you like*

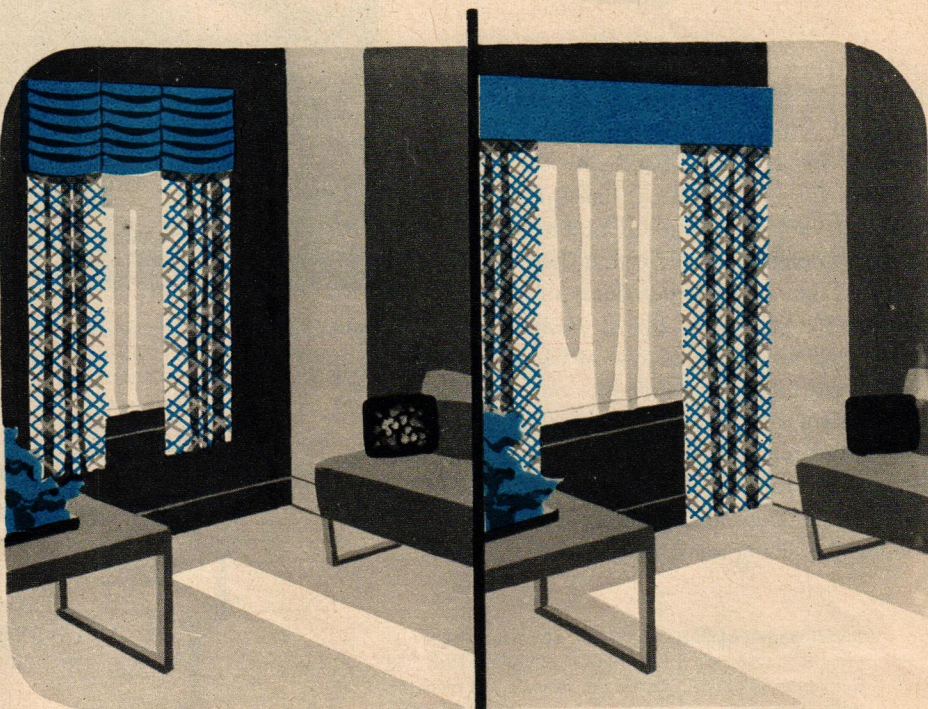
By Effa Brown, decorator

James Hawkins, architect

Bad. Over-sized double bed looms too large in small room because of busy expanse of patterned counterpane and tiny accessories.

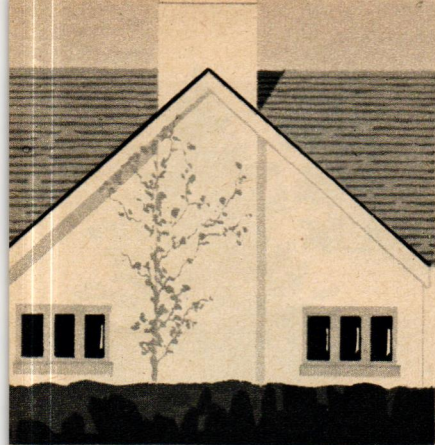


Good. Flowered material is used for flounce only. Throw cover matches rug, serves to lessen bulk of bed. A large object looks smaller against a matching wall or rug color. Wall decoration and lamps are in better scale.



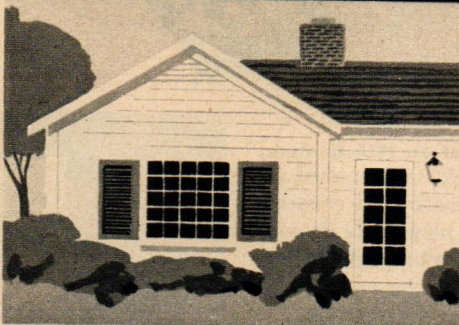
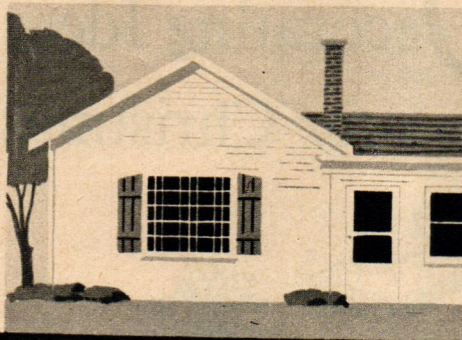
Bad. Top-heavy valance. Heavy draperies shroud window, are awkward length chopped off between sill and floor. Draperies should reach to sill, apron of frame, or to floor.

Good. Narrower, simply designed valance gives effective treatment. Draperies hang to floor and rod extends over wall on each side of window to allow maximum daylight.



Good. Remodeled chimney eliminates trick design, doesn't compete with roof lines, gives greater importance to windows. Horizontal planting is another major improvement.

Bad. New addition to house with basically good proportion went wrong with new large window with unmatching bars, inadequate shutters and too-slender chimney.

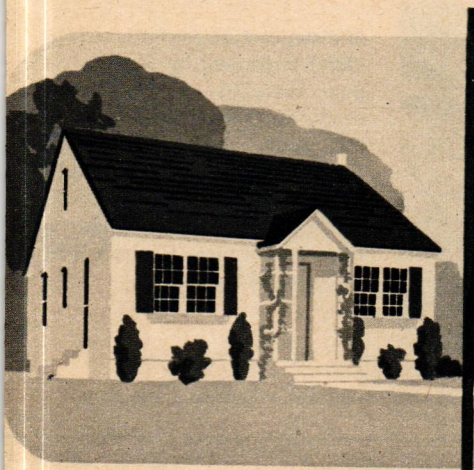


Good. Better scale with symmetrical window shutters that open and close, a veneer of brick around chimney to increase its size. Siding indicated would have been better choice.

YOU LAUGH at the funny man in a show because his headgear is ridiculously small. A "hayseed" character wears a huge hat pulled down over his ears. One hat is too small, the other too large. Neither hat is in *scale* with the man who is wearing it.

In houses and their furnishings, as in everything else, the things you like are "not too big, not too small", but just right. Good proportion and scale are a matter of pleasing relationship. This applies not only to size but to shape, bulk, texture, pattern and *color*. Often, a great improvement in scale can be effected by merely changing the wall color, as shown in the rooms illustrated here. Beautiful colors to answer all problems are available in **TEXOLITE** paints: rubberized **DURAVAL**, **Imperial**, or **Standard**.

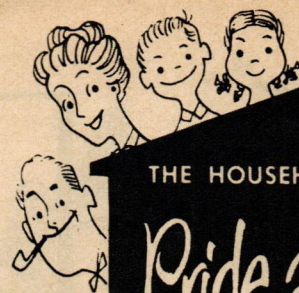
Study these examples of good and bad. Use them in planning or remodeling your house, and in decorating your rooms.



Bad. Overpowering entrance, skinny shutters, too many assorted elements that don't relate to one another or to size of house. Slight changes could improve house built like this.



Good. Similar house with unified windows and entrance planting that gives a ground-hugging appearance. Rose trellises are simple in design, but add character to house.

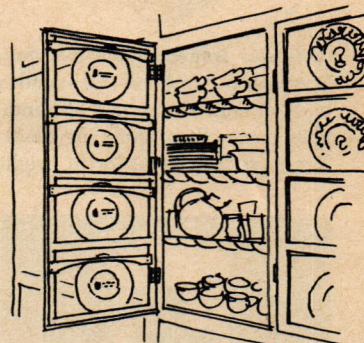


THE HOUSEHOLDER'S

Pride and Joy

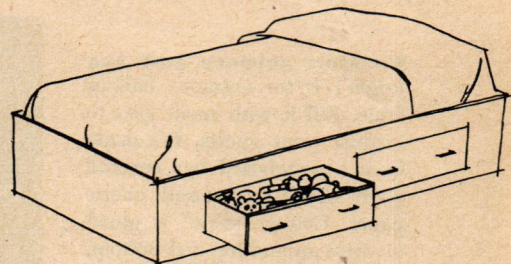
COLUMN

Bright Ideas for the Home



There may be no skeleton in your closet, but to conceal contents of glass-doored cabinets in the dining room or kitchen, this idea is for you. Decorative plates rest in grooves on back of door, are held in place by wood strip screwed to frame across top of each panel.

Dr. Earl Wells, Santa Monica, Calif.



You'll discover a lot of toy and bedding storage space in the children's room if you have bunk beds equipped like this family's. Solid frame is cut out to receive two drawers that operate on side guides under bottom bunk, also eliminating a cleaning problem.

William F. Lorton, Denver, Colo.

OUTDOOR RECIPE WINNERS

Announced below are names of readers who submitted the ten best recipes, as selected by the judges, for the **POPULAR HOME** Outdoor Fireplace (local **POPULAR HOME** sponsor in parentheses).

Mrs. Robert Boudet, Murphysboro, Ill. (Reiman Lumber Co.); **Mrs. R. V. Daniels**, Columbus, Ohio (Ironclay Brick Co.); **Mrs. Ed Bean**, Dubuque, Ia. (Midwest Lumber Co., Model Wallpaper & Paint Co.); **Mrs. Margaret Gallagher**, California, Penna. (Charleroi Supply Co.); **Mrs. R. M. Roberts**, Chicago, Ill. (John Bader Lumber Co.); **Mrs. Roger Lee**, Flint, Mich. (Michigan Lumber & Fuel Co.); **Esther M. Matchak**, Phoenix, Ariz. (O'Malley Lumber Co.); **Mrs. K. S. Brown**, Houston, Tex. (Wood Lumber Co.); **Mrs. Jimmie Flythe**, Augusta, Ga. (Augusta Building Supply Co.); **Christina V. Yager**, Alhambra, Calif. (Palm Ave. Lumber Co.)

For a free copy of the Ten Best Recipes, write **POPULAR HOME**, 300 W. Adams St., Chicago 6, Ill. Name your **POPULAR HOME** sponsor, enclose addressed stamped envelope.



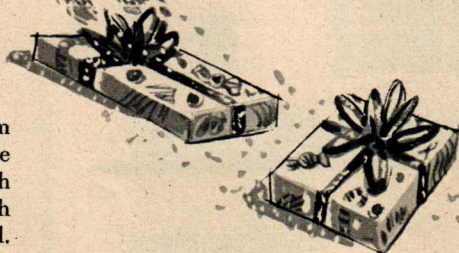
Lollypop Santa (above) is cut from Styrofoam. Mask off face and white parts of suit. Cover rest of Santa with glue paste, then spray or daub with TEXOLITE Accent Color in bright red.

D

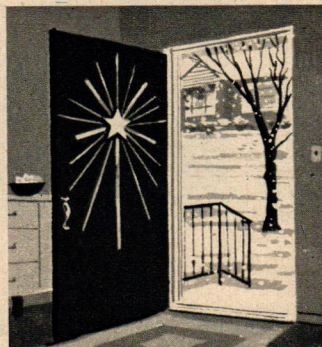
Decorating Ideas for Christmas



Pop bottle tree (above) stumps the forestry expert—until he finds that it's made from a pop bottle covered with modeling clay. Branches are pushed into clay and tied with tiny ribbons.



The charm of an 18th century doorway (left) is increased at Christmas time by red cross of wide ribbon, plywood or DURON Hardboard, with greeting tag of rigid material. Greens and ornaments provide central motif, also festoon railings at sides. All decorations should be tacked and wired securely to door.



Entrance door (left) in contemporary house calls for unusual effects. Home-made door decoration is Star of Bethlehem, made of dowels radiating from plywood stars of graduated sizes built up in center. Dowels, of varying thicknesses and lengths, are glued into holes bored in sides of largest star, then gilded.

Miniature chimney grab bag (right) is for entrance hall or table. Fill it with small gifts to surprise your guests. It's made from a pasteboard box covered with brick-patterned crepe paper. Cotton "snow" is glued in strips around top and bottom. Tie each package with a ribbon streamer extending over the side.

DATA COURTESY RIBBON GUILD, INC.



For a safer, gayer Christmas this year (right) spray your tree with water-mixed TEXOLITE paint. Do the job outdoors or on a porch protected with papers. Use a garden sprayer and mixture of TEXOLITE paste and water. TEXOLITE Standard gives a snow-white effect; for novel effects use Accent Colors.



Dramatic wall, door or mantel piece is easily made of two bare curving branches of any fine-twigged shrub. Break off parts to get clean line on one side, then wire together in curve. Cover with thick starch, and while still wet dust heavily with mica flake "snow." Conceal wiring with metallic cloth bow.



Effective centerpiece for your table (left) is formed by long-leaved pine branches cut from tree, candy canes, and bow of Tarlatan, satin, or metallic paper. Sprinkle with "snow", and add pine cones, small Christmas balls or candles as desired. Important to success of piece is mirror base for colorful reflections.

PAPER DECORATIONS IN COVER PHOTO COURTESY DENNISON MFG. CO.

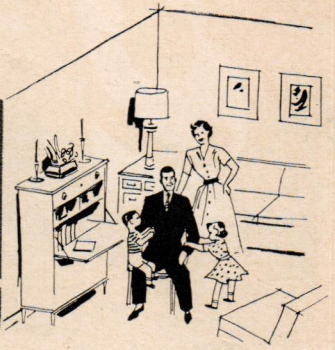
POPULAR HOME MAGAZINE: Holiday Issue, 1951, Volume 8, Number 8; Mailing Date: November-December, 1951. Published by United States Gypsum Co., 300 W. Adams St., Chicago 6, Ill., and sent to you eight times a year through the courtesy of the firm named on the covers of this issue. POPULAR HOME is devoted exclusively to the construction, decoration, care and repair of the home.



NOTICE: The following list of trade-marks are owned and/or registered by United States Gypsum Co. in the U. S. Patent Office, and are used in this publication to distinguish the indicated products manufactured only by this company. USG (plaster, lime, tile, paint, wallboard, plaster base, roofing), TEXOLITE (paint), DURAVAL (rubberized paint), TEXTONE (plastic wall paint), CEMENTICO (wall coating), SHEETROCK (gypsum wallboard), ROCKLATH (plaster base), PERF-A-TAPE (joint reinforcement), RED TOP (plaster, insulating material and other products), GLATEX (shingles), WEATHERWOOD (fiber insulating board), MORTASEAL (lime), INSO-BAK (insulation board), SHADOW-LOCK (attachment system), DURON (hardboard), SUPER-TITE (roof coatings), ORIENTAL (stucco), QUIETONE (fiber acoustical tile), ADAMANT (roll roofing), TRIPLE-VENT (basement sash), SABINITE (acoustical plaster), COLOR-RITE (metal lath), PYROBAR (partition tile).

Copyright 1951, United States Gypsum Co. Printed in U.S.A.

CORNERED AGAIN



This attractive room is finished in rich Planked Walnut SHEETROCK, which brings the beauty of random-width walnut planks at a fraction of the cost. Note the distinctive walnut graining in today's livelier, more interesting tones. Or you may prefer Knotty Pine, ideal for informal rooms; or Bleached Mahogany, for more formality. Whatever your choice, with Woodgrained SHEETROCK Wallboard you're assured of quick erecting . . . no joint treatment . . . minimum maintenance . . . strong, highly fire resistant walls. Comes in large, easy-to-handle panels—4 ft. wide, up to 12 ft. long, $\frac{3}{8}$ in. thick—matching nails available.

—and does Dad love it!

It was a great day for Dad when he had this favorite corner of his done over with Planked Walnut Wood-grained SHEETROCK. Made his "dull ol' den" so cheery and attractive, the whole family practically moved in with him. (It's a regular second living room now.) Dad loves the attention but, like many another who has discovered the charm of Woodgrained SHEETROCK for walls and ceilings, he's planning—guess what? *More* rooms richly panelled with Woodgrained SHEETROCK Wallboard. Better plan a room, yourself, in this popular SHEETROCK—soon!

*There is only **ONE***
SHEETROCK

T. M. Reg. U. S. Pat. Off.

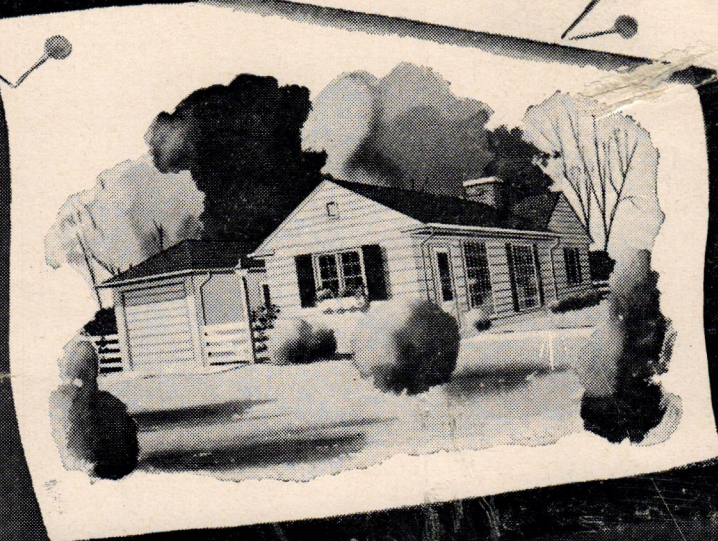
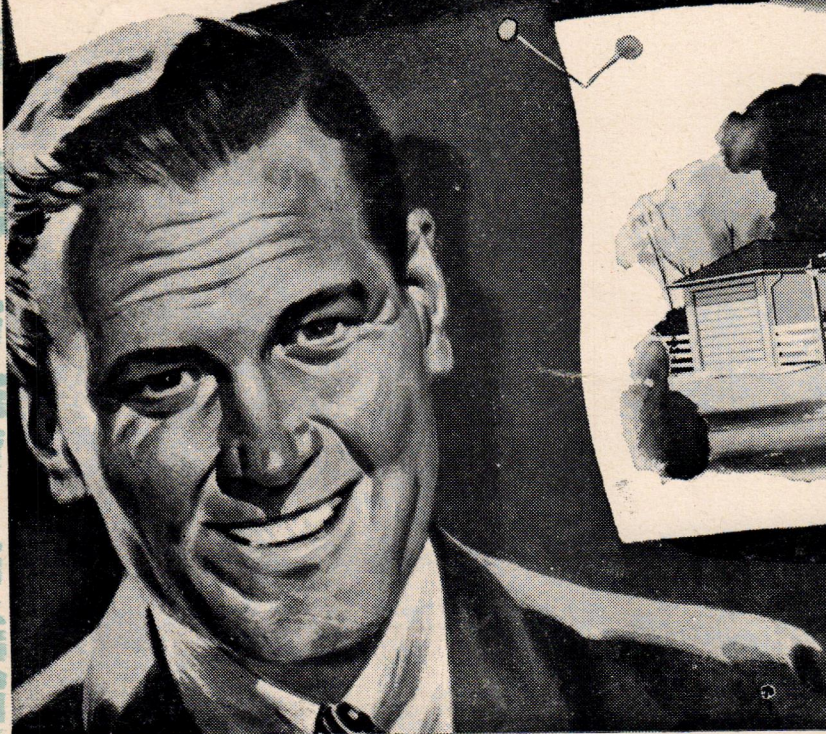
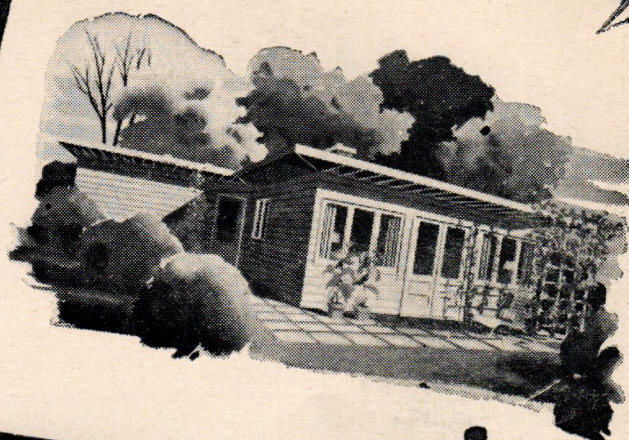
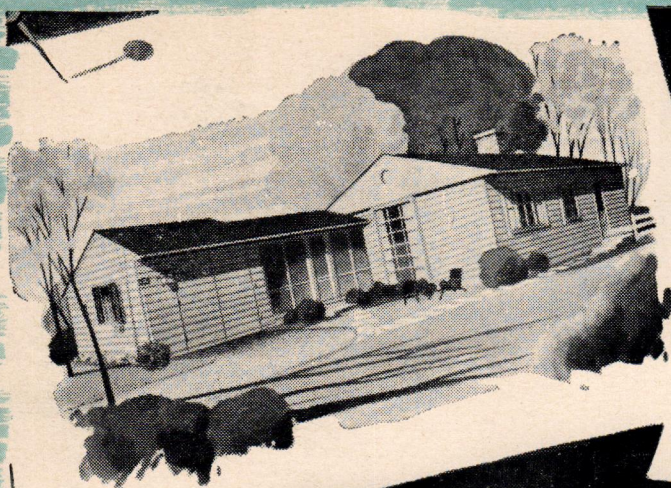
The Fireproof Gypsum Wallboard



United States Gypsum

For Building • For Industry

Gypsum • Lime • Steel • Insulation • Roofing • Paint



Our reputation is
a Good Foundation
for Better Homes...

DEPEND ON US WHEN YOU BUILD...

Oakridge Builders Supply Co.

"Everything for the Builder"

Willamette Highway

Phone 2301

Oakridge, Oregon

9536

C S RICE
360 W 13TH
EUGENE OREG.
8536-355

Sec. 34.66 P. L. & R.
U. S. POSTAGE

PAID

Chicago, Ill.
Permit No. 4511