

# POPULAR HOME

Serving more than 3,600,000 families in 4,800 communities *Holiday Issue, 1952*

make the most of  
**CHILDREN'S TIME**



**Wardwell Lumber Co.  
Bristol, R.I.**





When you hear the Bells of Christmas ringing  
may it be a sign they're bringing  
Health and Happiness to you!



merry christmas! happy new year!





BRIEF ARE THE DAYS OF CHILDHOOD; but they're golden ones, as you agree every year around the Christmas tree, and many times in between. Like every parent, you want to give your children the advantages you didn't have. You can't turn back the clock—but you *can* give the youngsters a pleasant home life that includes the proper facilities for play, rest, and study.

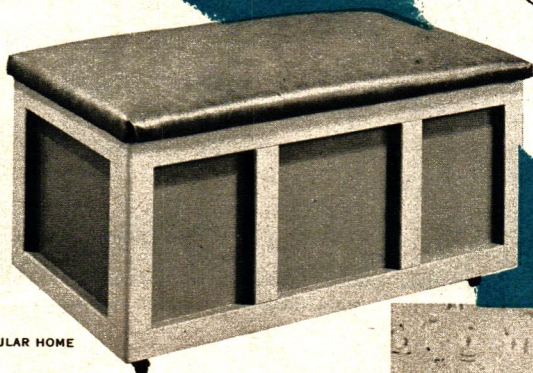
Their rooms should be their headquarters, to enjoy and to maintain. A separate play-study room is ideal, but lacking the space, their bedrooms can do a full-time job of double duty. If they're crowded and in each other's hair, it's time right now to think of finishing the attic or adding a room to the back of the house. Whatever you do, make use of the *new ideas* that save space and simplify mother's tasks.

These five pages will take you from nurseries to teen-agers' rooms. Along the way you'll find practical tips for remodeling, decorating and furnishing. The emphasis is on durable, easy-to-clean surfaces; on built-in features that conserve floor space and save you the price of furniture; on flexibility for future use. Children's time is here to stay! (continued on next page)

## make the most of Children's time...

**Happier for the Youngsters,  
Easier for Yourself;  
Let these Results Come True in Their Rooms**

by Charles A. Wayman  
Editor



DESIGNED FOR POPULAR HOME  
BY L. C. ALGOREN

**On the cover** and repeated here is a familiar scene: the day after Christmas. Patty and Bobby, ages 3 and 5, were ready for Santa's toy avalanche because daddy built them a POPULAR HOME Toy Chest, the brand-new utility box of exclusive design. Here's a sturdy chest on casters that's 30x15 inches, 18 inches high, made from one 4x4-foot piece of ½-inch DURON Hardboard, plus 1x2 and 1x4-inch lumber and hardware. You can build it for less than \$6 if you don't upholster the top, slightly more with the padding. Get a *Free Toy Chest Handyman Plan*—your POPULAR HOME sponsor has it now!



**Get Your  
FREE  
Handyman  
Plan**





HOME OF MR. & MRS. RALPH ETTLINGER, JR.

DATA: RUTH W. LEE

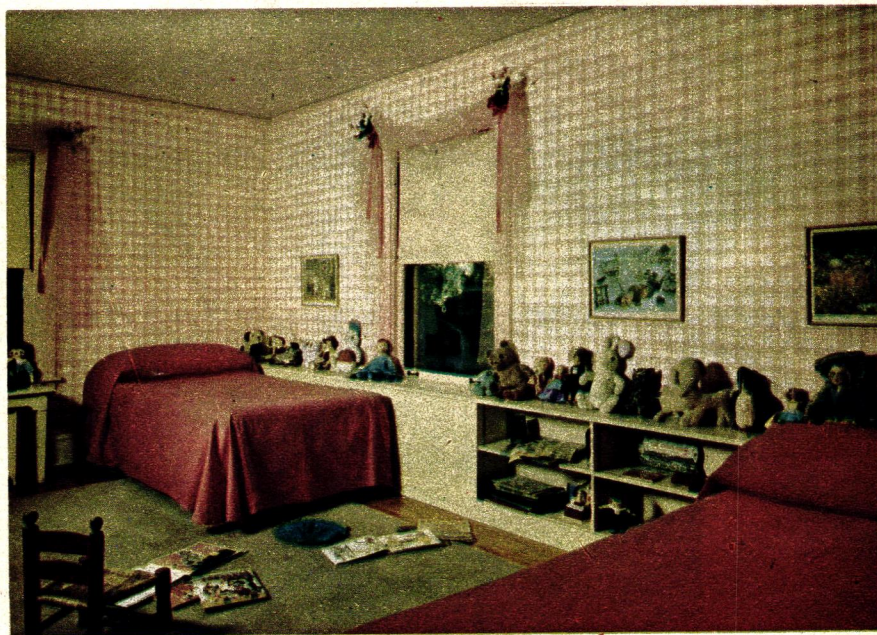
HEDRICH-BLESSING

**What you can do with a finished attic** or an upstairs corner: convert it to a nursery wonderland like that, above, of three-year-old Bonny Ettlinger. Unfinished wardrobe-drawer units can be combined with shelves you build in, for custom-made appearance. Wallpaper and story book cutouts add bewitching decorative effect. For a new room like this, insure year-round comfort by insulating walls, ceiling with RED TOP Insulating Wool.



(Continued)

**From a remodeled house** comes this example of effective room treatment for two small lassies. Adjustable low-level shelves, of type easily built-in by home handyman, are supported by pins in punched metal runners. Simple color scheme is used because of medley of color added by toys, dolls. Two other ideas: disguise closet doors by carrying wallpaper across them; save space by using bunk beds that can be separated later.



REMODELING AND DECORATING BY HUMPHREY & HARDENBERGH, INC.

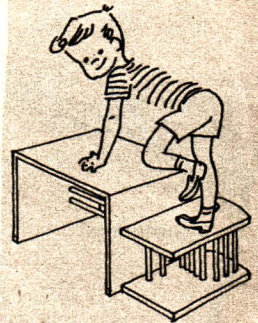
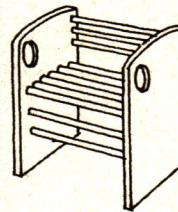
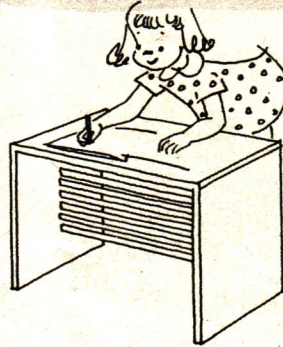
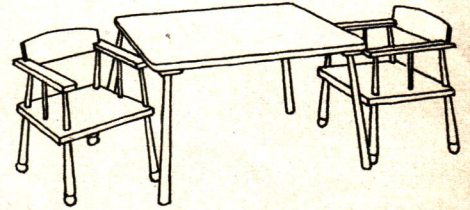
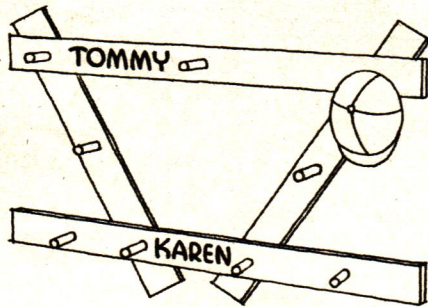


**Upstairs transformation**—from a little-used sitting room to a well-equipped nursery. Cabinet work, combining drawers, cabinet and shelves, is custom-built type but is within ability of careful home workman. Use colors to identify places for different objects. Another good idea: build in toy-storage bins with hinged tops to double as window seats. DURON Hardboard is excellent material for non-splinter desk and counter tops, drawer bottoms, sliding doors in cabinets.



## For the Toddlers . . . Furniture You Can Build

(Right) POPULAR HOME's Grow-Up Furniture, captain's chairs and table in separate knockdown kits that come ready to assemble and finish. Special knobs make chair legs adjustable for growing children. They're in the photo on front cover—order yours *now* through the local firm named there. (Center) The child's idea of what his things should be: a Topsy-Turvy Play Set, designed for you to build from 3/4-inch plywood and 1-inch dowels. Chair and table have any side up for constructive, creative play—not available as kit. See directions in Photo Plan 52-8, yours for 10 cents from your POPULAR HOME sponsor. (Below) A simple wall or door rack that you can make—for clothes, hats, toys, in hallway or child's room. Just nail 1x3-inch boards together, drill holes, and glue in pegs of 1-inch dowel stock. See your local lumber dealer for materials and advice.



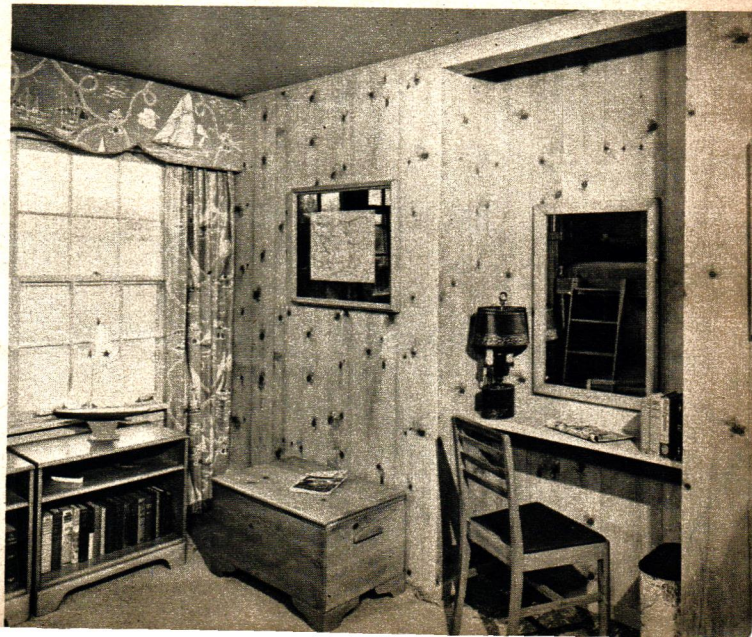
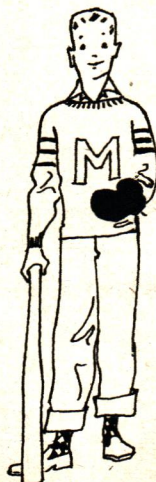
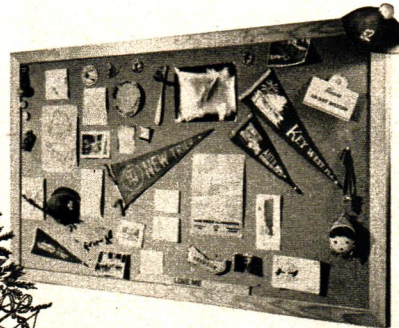
## For Teen-Age Happiness at Home: Make the Room Fit the Child

GROWING pains are quickly cured if the child can rule his own domain—a room that's comfortable and well-equipped. If you've planned ahead, many of his nursery furnishings can be converted to serve just as well through the grammar-school and teen-age years. Minor remodeling can make home his favorite hangout.

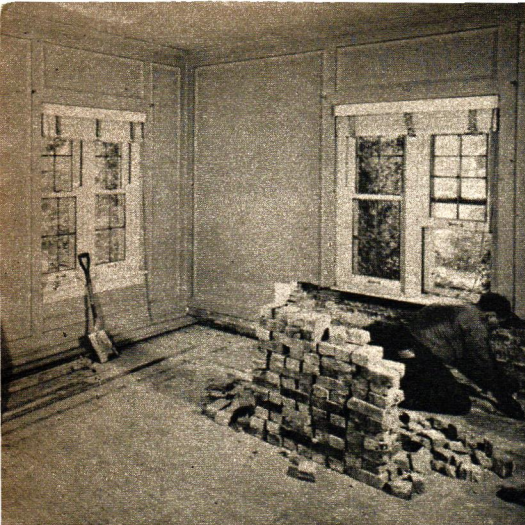
Set the scene that suits him; stay away from conventional decorating and arrange his room for *fun*, as well as study and rest. Provide for his hobbies—if the young lady's a collector, make a bulletin board of cork or insulating board. If the lad is a budding explorer, bring in a nautical feeling like that at the right—a room paneled in fire-resistant Knotty Pine SHEETROCK Wallboard.

For pointers you can use, study the inspiring remodeling story on the next two pages. Many of its elements can help improve *your* children's rooms.

(Continued on next page)

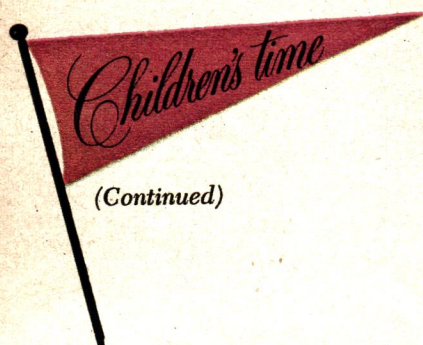






**These two pages** tell the graphic story of how one family built "youth appeal" for four children into a remodeled house. Everything's in pairs (below) for the two girls, 9 and 11, except the two-owner bulletin board. Remodeling (left) required removal of old wall moldings, new radiator recess under windows.

HEDRICH-BLESSING



**How to share a room** between two boys, ages 10 and 13? This family lined wall with shelves, provided indirect lighting at top, and built in desk over concealed radiator. Lively wallpaper and Scottish plaid bedspreads are good examples of bold color elements used effectively to minimize children's clutter. Each headboard (drawing) has hinged door for storage of bolster and bedding.

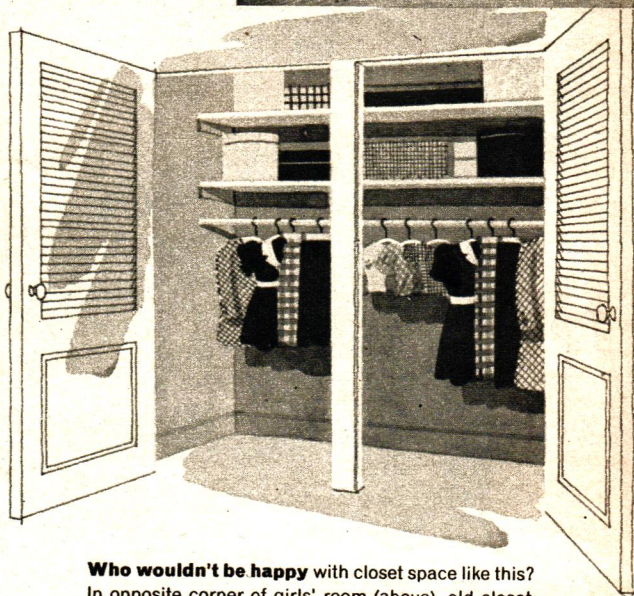
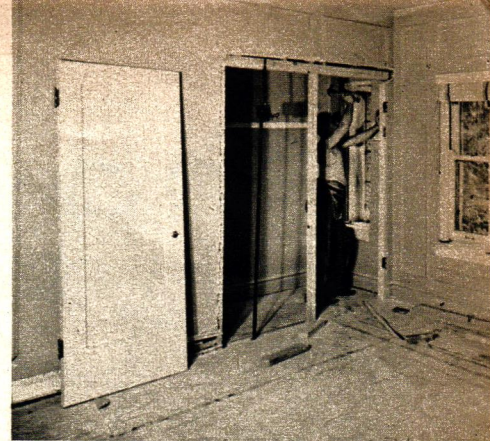




**Well-lighted study spot** under window is equipped with two-place desk with matching drawers on each side. Note rounded corners, safety feature for children. An alternate idea is to use pivoting swing-out drawers. Curtains are of embroidered muslin, draperies of chintz, bedspreads of cotton pique.

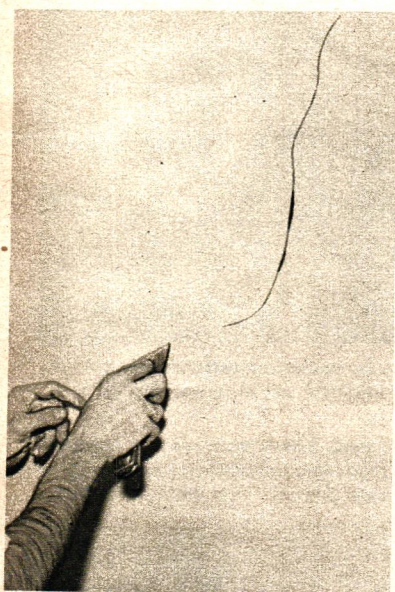


DESIGNER FOR REMODELING:  
MARIAN S. QUINLAN

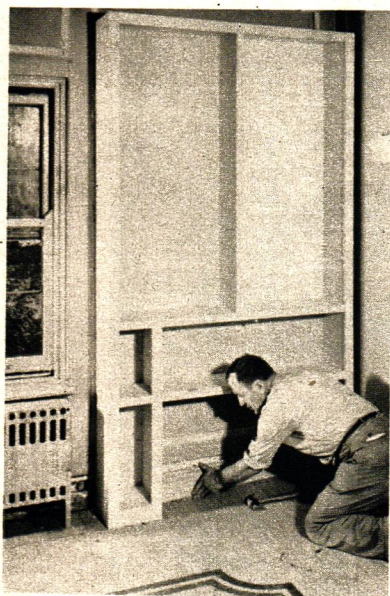


**Who wouldn't be happy** with closet space like this? In opposite corner of girls' room (above), old closet was made accessible by widening entrance, installing louvered doors that aid ventilation. Doors similar to these are stocked in many retail lumber yards, can be installed by home handyman.

## Here's How to Get Remodeling Results!



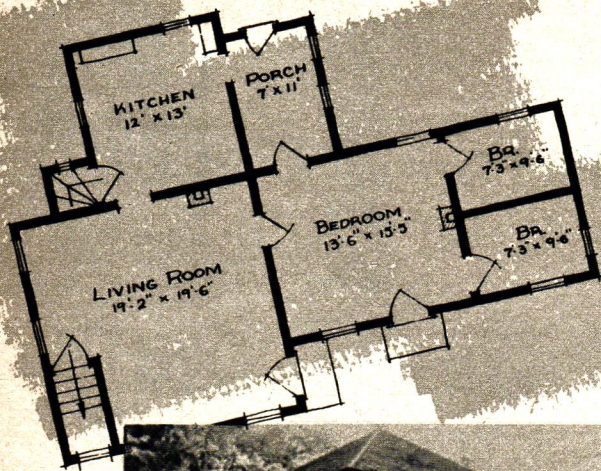
**Minor plaster repairs** (above) are easily accomplished with TEXOLITE Spackling Putty, for slight cracks and imperfections and filling nail holes. Larger holes should be filled first with RED TOP Patching Plaster, then spackled. For new work, RED TOP Plaster and ROCKLATH Plaster Base fill the bill.



**Space-saving built-ins** were carefully planned to fit the room. Wall unit (above) first was framed, moved into place before inserting shelves, then given pickled pine finish. Finished desk and shelf units (right) accommodate possessions of both boys. Spot-light is recessed in soffit above desk.







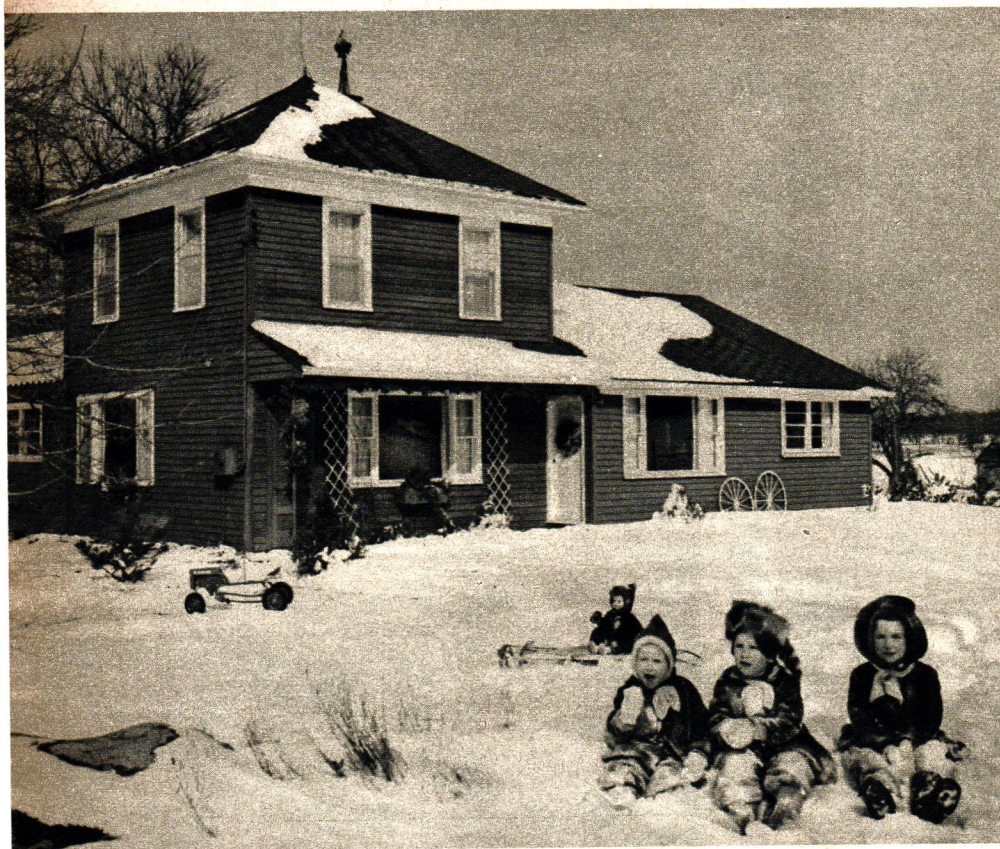
**Then.** Old house was of good basic design. But it needed new roofing, insulation, picture windows, paint, central heat, bath, modern kitchen, workshop, storage space, better entrances, stairways. (See floor plans above, and opposite).

*It pays to*

# PLAN YOUR REMODELING

**A few improvements at a time  
Get big results in an aging house**

**L**ONG-RANGE planning is paying off for the John Stiehers, as it can for you. They are remodeling from a plan worked out with expert local advice and that of the Illinois Extension Service several years ago. In their spare time, they add new improvements each year, keeping in mind the overall plan. The photographs on these pages show their excellent progress to date. Now's the time to get *your* remodeling plans under way—and your POPULAR HOME sponsor's is the place to start.

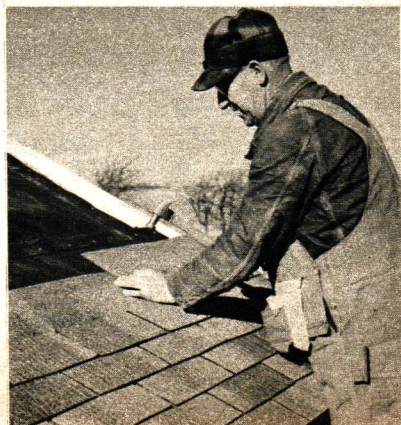


**Success Story.** Winter's a pleasure when you have a home as bright and cheerful as the Stiehers' red and white remodeled house, now the chief part of the whole holiday decoration scene. This holiday spirit is evident in the faces of the three Stiehr children—Virginia, 4, Johnny, 5, and Margery, 6, as they frolic in the snow.



**Get year 'round comfort** and lower fuel bills with RED TOP insulating wool blanket batts.

**New USG Thick Butt asphalt shingles** add protection, fire-resistance and beauty to old roofs. See your local dealer for details.



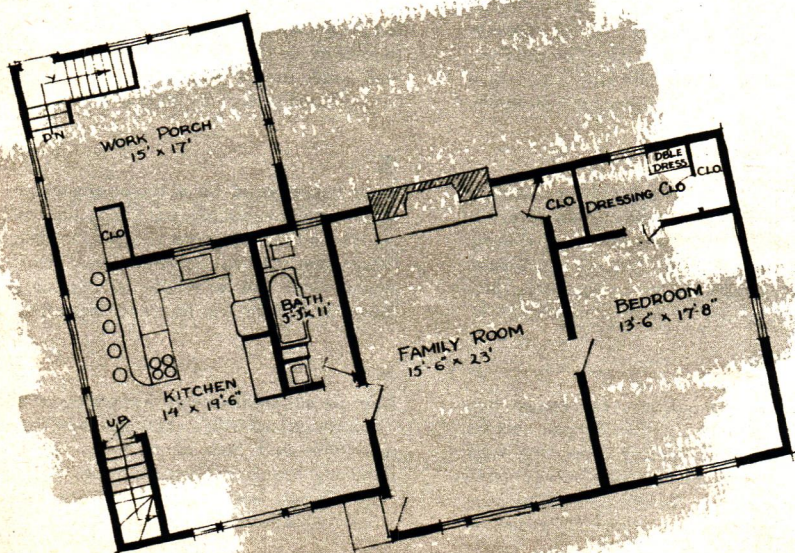




**Then.** Tiny kitchen in back room was too dingy and dark, did not provide enough space for modern kitchen. Large porch-workshop was needed with better entrance. Partial basement was needed for heating equipment, storage.



**Now.** New addition at rear of house is porch-workshop with convenient closet (see floor plan below). New rear grade entry makes it possible to go to basement or up into porch and rest of house with minimum of steps. New rear entrance is handy to driveway and rear lawn. Note new picture window in kitchen dining area.



## Hints to help you enjoy your Holiday

### Keep your tree fire-resistant

by keeping it green and fresh. Here's how R. W. Lorenz, forester of the Illinois College of Agriculture, says you can help your tree take up water: Cut the main trunk on a slant about an inch above the original cut so fresh wood is showing. Keep the base of the trunk in fresh water. If you don't put up the tree right after you cut it or buy it, store it in a cool place with the butt end in a pail of water. If you buy a tree, try to get a fresh-cut tree that has moist needles and a pungent odor.

### Toys can teach

youngsters to use their hands, coordinate mind and muscles, according to child development specialists at Iowa State College. Toys that teach body skills are push-wagon, ladder, building blocks, jump rope, swing. A teeter-totter or rocking horse help children learn to share and play with others. Toys that help a child express his feelings are clappers, cymbals and drum. The creative yen finds expression when a child finger paints, molds clay or pastes up a scrapbook.

### Use what you have

to make holiday centerpieces. Bittersweet or some colorful Christmas tree balls sprinkled in evergreens make a gay—and inexpensive—arrangement for your table. Several lemons, cranberries or bright red apples placed in some evergreen also make an attractive centerpiece. Candles—in all colors, sizes and shapes—can be made from odds and ends left over from last year. Tin cans, square milk cartons or coffee cans can be used to form special holiday candles. And if you want frothy-looking candles, beat the wax when it is semi-liquid.

### Plan ahead for holidays

as a family to prevent tension and tiredness at last moment. Children may want to start early by making gifts for their family or friends. You'll want to choose the tree a little early so all preparation won't come the last day. The children can help make greeting cards by such simple techniques as stenciling or spatter painting. And you'll want to plan your Christmas Day menu well ahead of time so you'll be fresh to enjoy the festivities.

### Home-made candy

is fun at Christmas time. The California Experiment Station suggests a candy thermometer to take the guesswork out of judging when candy is cooked to the right stage. It should have a scale ranging from room temperature to 300 degrees F. or above. Kitchen scales are also useful because often ingredients are measured by weight. Other utensils suggested are small food grinder, electric mixer, accurate measuring cups and spoons, shallow baking pans and one or two large cooking spoons.



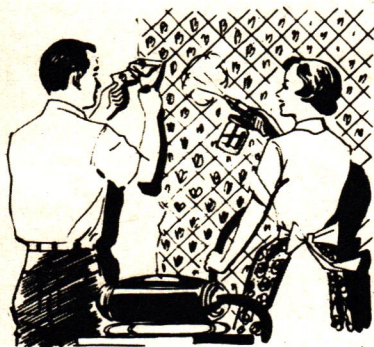
## Painting Tips

### How to Paint Your Wallpapered Walls

Any paint job is only as good as the surface underneath. Even a magic paint like TEXOLITE DURAVAL calls for good wall preparation. If your current project is the painting of walls that are now papered, you have two choices: (1) Paint over the wallpaper; or (2) Remove the paper first. Here are some points to remember:

#### ● If you're painting over wallpaper

Clean first with a dough-type wallpaper cleaner. If not possible to remove all grease spots, touch up remaining spots with shellac. Patch torn paper spots with a paper similar in weight and texture, carefully concealing patch edges. Don't paint over paper that contains a bleeding type dye (to test for color fastness rub lightly with wet rag). Designs with metallic paint will show through paint coats, should be removed before painting.



#### ● To remove wallpaper before painting:

Equipment for one-coat-removal—Broad knife with a rigid blade, the type generally used for scraping.

Big wide brush or sponge for application of strong solution of hot water and detergent. Or, use vacuum cleaner spray attachment. Brown or kraft paper drop cloth to protect floors from water and paint.

#### ● What to do:

Work from bottom up. To loosen paste, apply hot detergent solution generously over wall with wide brush, sponge or spray. Let soak thoroughly. Scrape. Work in sections about three feet square, letting next section re-soak while you're scraping. Keep blade at about a 30° angle to the wall to avoid gouges.

#### ● To remove two or more coats of wallpaper:

For an easier, faster removal job, it may be possible to rent a wallpaper steamer from your dealer. Follow his directions for using it. Scrape with broad knife.

#### ● After removal of wallpaper:

Check stripped wall for traces of wallpaper size or paste. Wash off with Soilax or similar compound in hot water. Rinse thoroughly with clear water. Patch cracks, nicks, holes.

#### ● Now you're ready to paint:

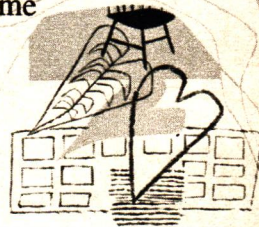
With TEXOLITE DURAVAL paint all you'll need is a 7" to 9" mohair or short nap lamb's wool roller; or a large nylon or pure bristle brush. For tight spots and woodwork use a 2" enamel brush. Add a dampened rag to wipe up spots and you're ready to start!

This is  
another in our  
series on

*Do you know...  
where to use  
how much  
of which*

How to Color-Decorate  
Your Home

*Color in your  
color scheme?*



Here's the easy, practical way to plan a new  
color scheme or improve the one you're tired of . . .

**H**AVE YOU EVER NOTICED how different your home looks when you return after a short trip? You see it in somewhat the same way as a visitor. You need this objective viewpoint in planning a new color scheme or in improving your present one.

To analyze your color scheme, avoid thinking of specific objects (red lamp, two green chairs) but study the room for its general color effect. Think of walls, floor, furniture, draperies only in terms of color, the amounts and distribution of colors. Avoid using too many colors in one room. Include a light, a medium and a dark shade in each scheme. Vary the proportions of the colors used. Distribute color in locations where it seems pleasing to you.

Make a collection of colored scraps (from magazines, color cards, ribbons). These, with crayons and water colors, will provide your tools for working out color plans. Study the room setting and its Color Guide (opposite page) as an aid in charting your own living room, bedroom or other room. You'll like this simple method of "seeing" the color effect of a room. It's an excellent way to select paint colors for walls and ceilings to create pleasing backgrounds for your furnishings.

**1**  
**Create a mood with fireside colors.** Three Walls: Morocco Red. One Wall: wallpaper in Wine, Black, Rose and Pink. Ceiling: Gardenia White. Floor: Gray. Colors: Gray-Blue and Black with flashes of China Blue and Pink, with a predominance of White.

**2**  
**Color gives a room spirit** if the scheme is simple. Avoid jumbled effects caused by too many colors. Walls: Coral Rose. Ceiling: Gardenia White. Floor: Deep Green. Colors: Crisp White with Bright and Deep Green plus generous portion of clear unmuddied Rose.

**3**  
**Related shades of blue and brown** form a background for splashes of color accents. Three Walls: Canterbury Blue. One Wall: Brown and Ivory White plaid. Ceiling: Pottery Blue. Floor: Brown. Colors: Ivory White, Fawn, with Lime Green, Clear Blue and Persimmon.

**4**  
**Men like bright color tones** against a warm and mellow background. Three Walls: Russet Beige. One Wall: Congo Brown. Ceiling: Sheffield Gray. Floor: Taupe Brown. Colors: Pink Sand, Brown, Bright Olive, Gray. And don't forget the dash of Deep Coral.

**5**  
**Cool background for a too-sunny room** borrows the colors of pine trees and a tranquil sky. Three Walls: Brewster Green. One Wall: Pottery Blue. Ceiling: Gardenia White. Floor: Antique Gold. Colors: White, Light Gray and Brown with Chartreuse, Blue and Cherry Red.

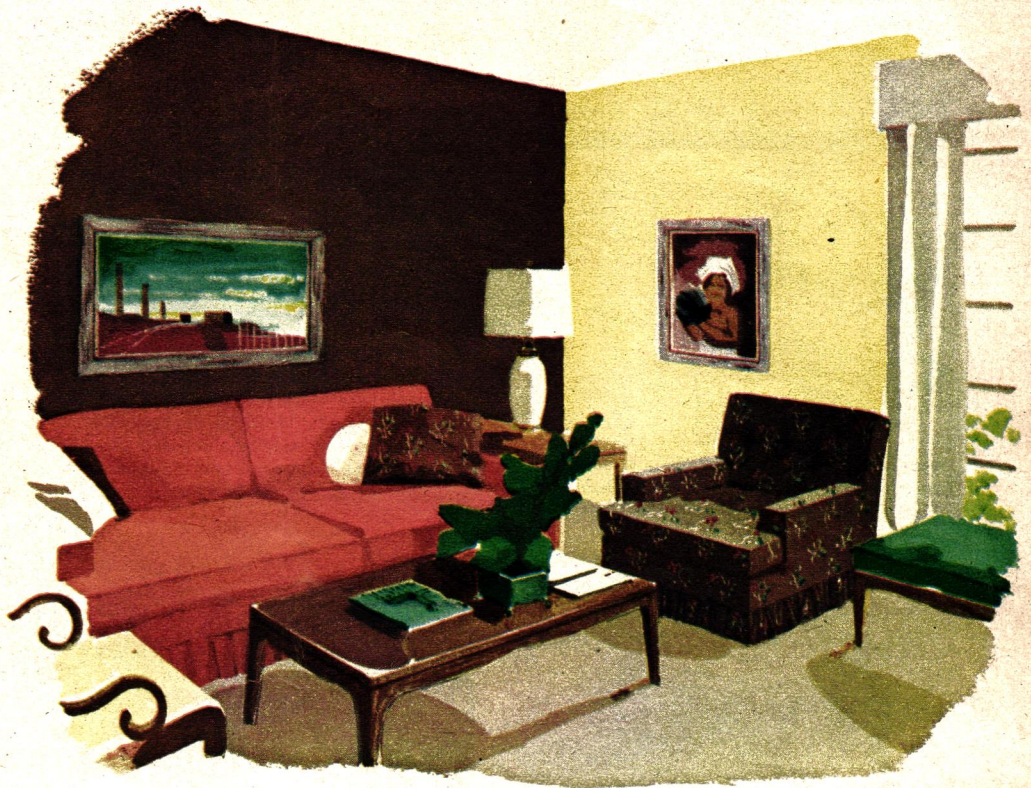
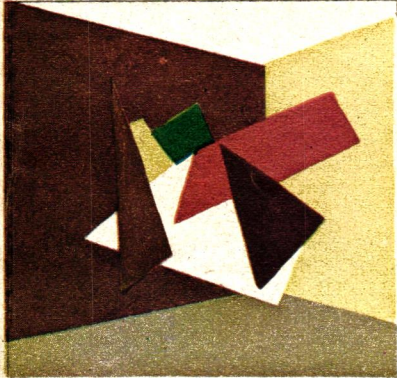
**6**  
**Capture sunshine in a dark room** by using Yellow combined with an abundance of Gray and White and clear strong color. Walls: Candlelight. Ceiling: Gardenia White. Floor: Gray. Colors: Gray, White and Black with Deep Yellow and Turquoise.



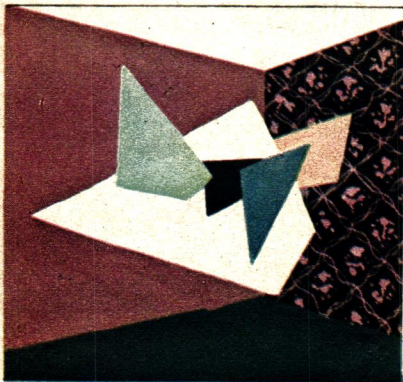
*The Color Guides shown on this page will help you to decorate. Pattern your own rooms after these or, better yet, plan your own! For variety in colors, choose TEXOLITE DURAVAL, the scrubbable rubber base paint.*

*By Cynthia Montgomery  
and Marian S. Quinlan*

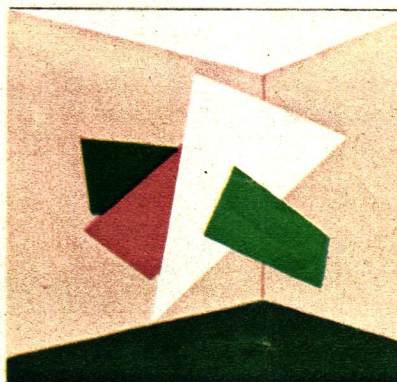
**Below is a Color Guide** and, at right, is the decorating result. The Color Guide shows the colors to use. **Three Walls:** Congo Brown. **One Wall:** Candlelight. **Ceiling:** Ivory White. **Floor:** Beige. **Colors:** Beige, White, Yellow, Brown and Red with highlights of Vivid Green.



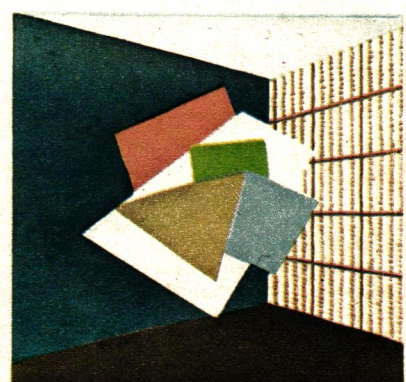
**Below are six more Color Guides. Follow these or work out your own.**



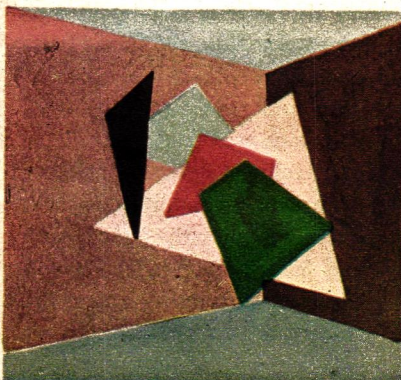
**1** Create a mood with fireside colors.



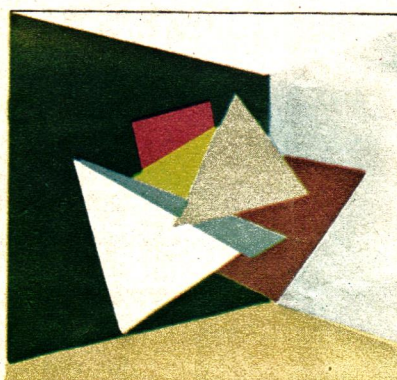
**2** Color gives a room spirit.



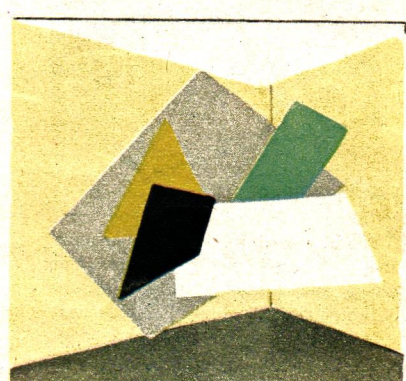
**3** Related shades of blue and brown.



**4** Men like bright color tones.



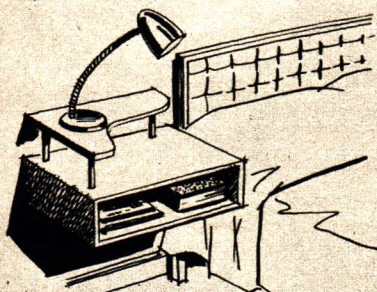
**5** Cool background for a too-sunny room.



**6** Capture sunshine in a dark room.

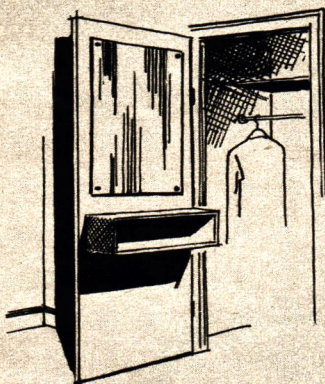


THE HOUSEHOLDER'S  
**Pride and Joy**  
COLUMN  
Bright Ideas for the Home



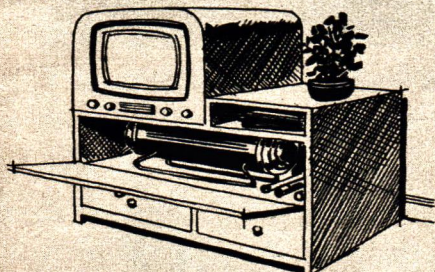
**New idea** in bedside table—Oregon reader eliminated dusting around legs by hanging "no-leg" table from wall. In this POPULAR HOME version, table measures 16 in. wide, 12 in. deep, 14 in. high. Dowel supports curved top shelf, second shelf has open area needed for serving sickbed meals.

*Mrs. Irene L. Brown, Portland, Ore.*



**Ladies' favorite**—a small mirror and box shelves attached to inside of guest closet door. Shelves are 6 inches deep, bottom 36 inches from floor—perfect temporary resting place for purse and gloves. Just wonderful for that last-minute peek and primp before greeting the world!

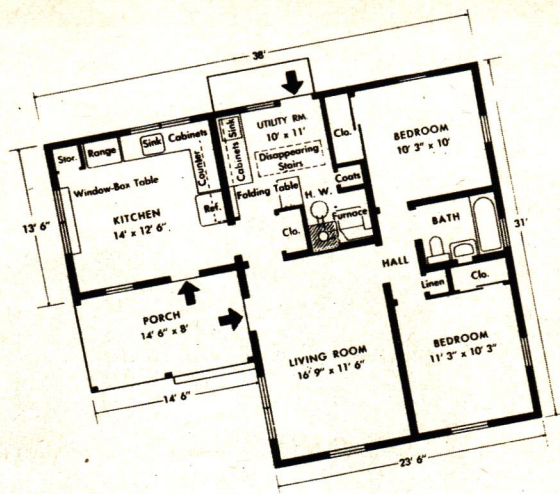
*Mrs. Edna M. Doner, Decatur, Ill.*



**In New York home**, the tank-type vacuum cleaner hides in a neat combination cabinet. Top accommodates television or radio set and lamp. Open shelf for books and magazines, and drawer for cleaner attachments can be added features. Cabinet measures 14 in. deep, 24 in. high, and 36 in. long.

*Mrs. Muriel Harvey, Staten Island, N.Y.*

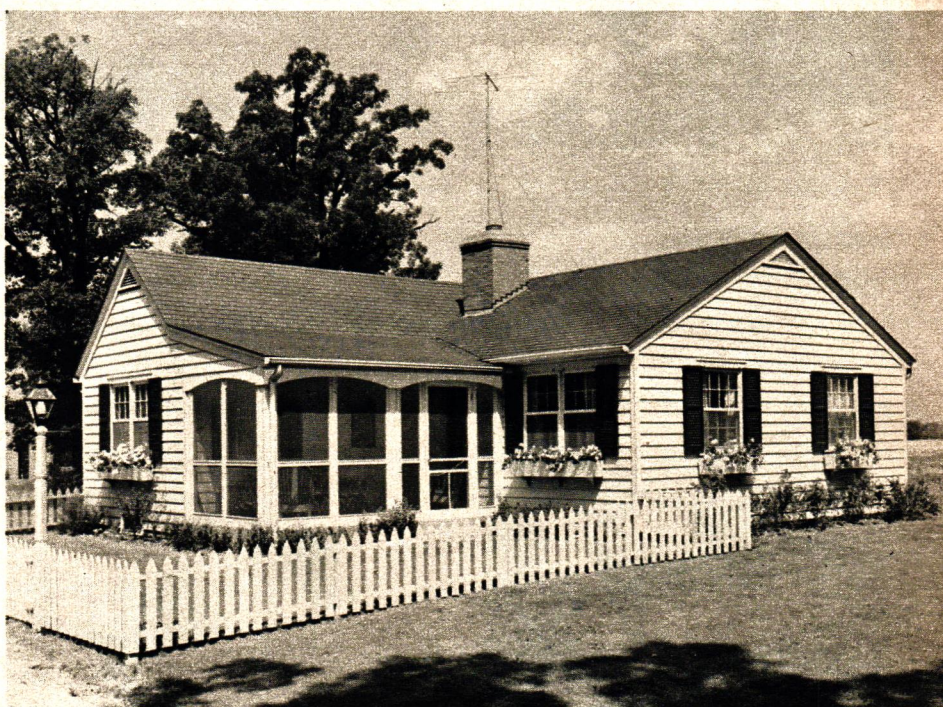
**\$20 Each for Contributions published in this column!** Enclose sketch or snapshot, address POPULAR HOME Magazine, 300 W. Adams St., Chicago 6, Ill.



POPULAR HOME'S

# House

**No wasted space** in this house, designed for use of such high-quality materials as RED TOP Insulating Wool and USG Thick Butt asphalt roofing. Size of house: 925 sq. ft., 13,423 cu. ft. excluding porch. Building blueprints may be purchased through your POPULAR HOME sponsor, from Bertram A. Weber, architect, 221 N. LaSalle St., Chicago 1, Ill.

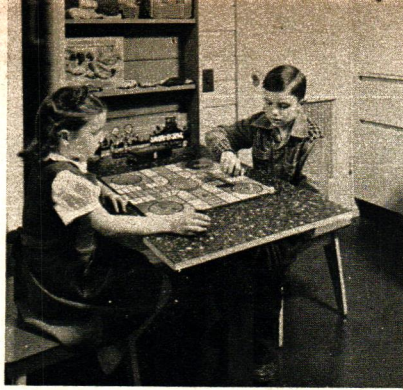


**OLD-FASHIONED COMPANIONSHIP** returns to a modern setting in this small house that features a large dining kitchen. It's POPULAR HOME's House With a Warm Heart because its *heart* is the family-size kitchen and utility room—*warm* from the friendliness of a family that enjoys its own company in working together, playing together, and growing up together.

This is the Daniel C. Swanson house designed for efficiency and economy by Architect Bertram A. Weber of Chicago. It has two bedrooms, a comfortable porch, and is the ideal home both for a site in the open spaces at the edge of town, and for even a 50-foot city lot. And *you* can build it—for more information about the house, its built-in features and an alternate layout for adding a basement, see your POPULAR HOME sponsor for Photo Plan 52-8, price 10 cents.







BUILT-INS DESIGNED BY LERNER-BRENDIECK  
DECORATOR: ELIZABETH WHITNEY

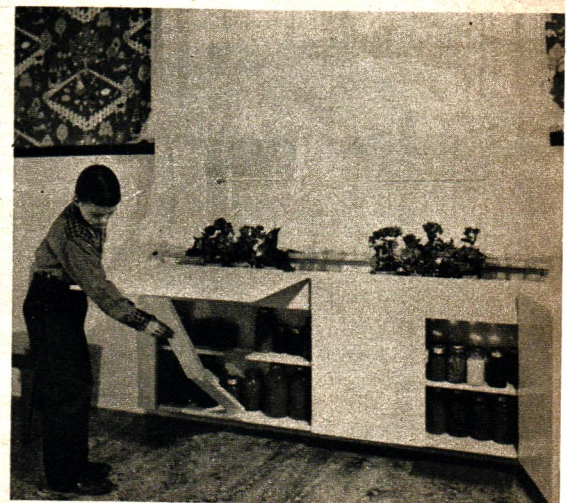


# with a Warm Heart

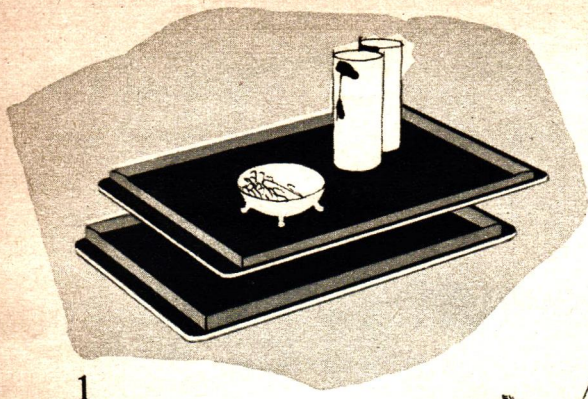
The Family Circle Lives Again  
In This Comfortable Small House

**Spacious dining kitchen** has convenient L-shaped food preparation center (below, right), with pleasant dining area in front corner (below). Flower box and fold-down table (below, corner) are special features of storage unit built beneath side window. Color scheme is olive green, yellow, and red. Interior walls, ceilings throughout are of smooth, fire-resistant SHEETROCK Gypsum Wallboard.

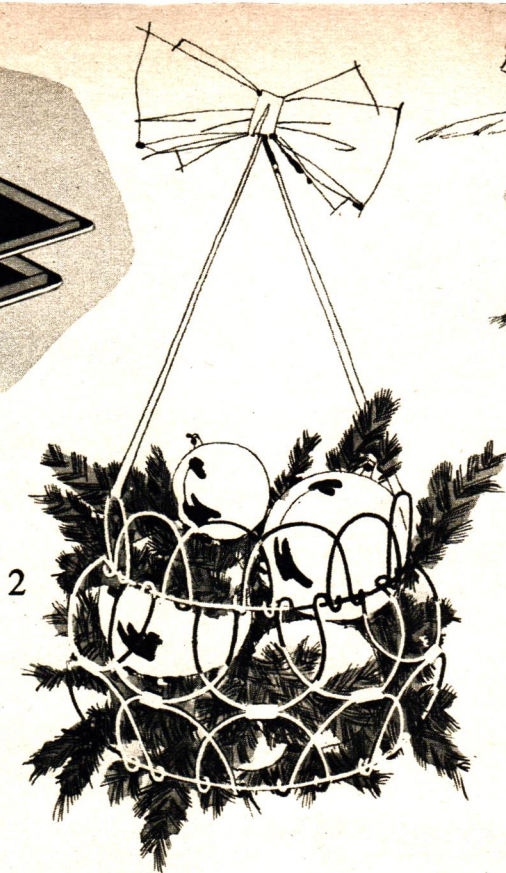
**Well-organized work and play** come easily in utility room with built-in convenience (above). Just right for children's indoor play is table that hinges down from wall case (above left). There's a spot in your house for this double-duty unit—for complete how-to-build instructions, get Photo Plan 52-8 from firm named on covers. Storage wall includes boot bin under sink, built-in clothes hampers.



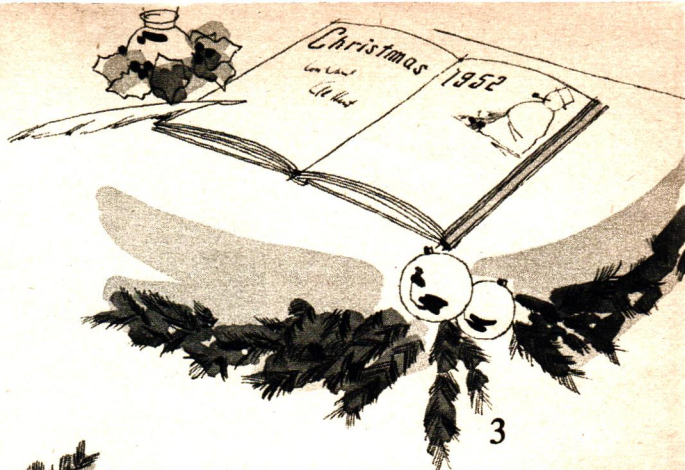




1



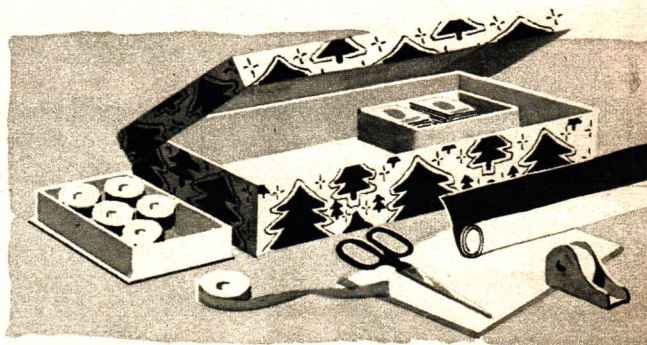
2



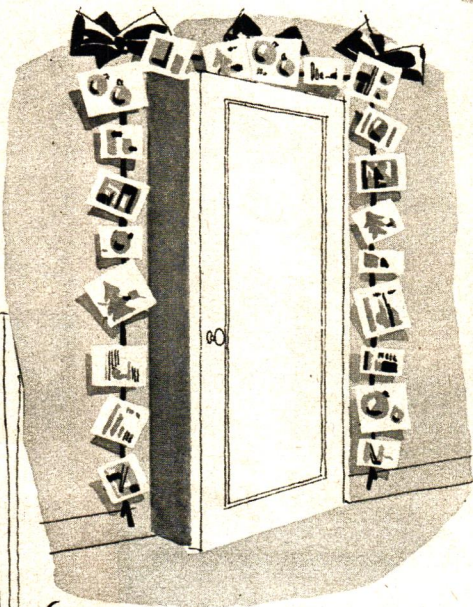
3

# Merry ideas for Christmas

4



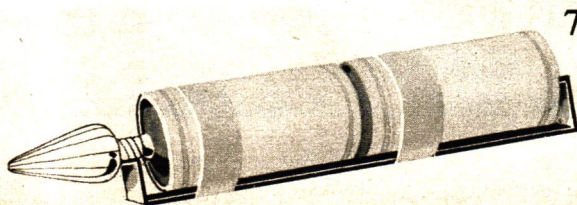
5



6



4. **Gift wrapping is easy** when you keep decorative paper and ribbons sorted and in order ready for use. Cover sturdy suit box with gay Christmas wrapping paper. In it, keep small boxes for ribbons, seals, scissors, tape.
5. **Dramatic door, wall or mantle decoration** is easily made from Christmas cards taped or stapled to gay ribbon. Add bows and ornaments for highlights.
6. **Copy Jack Frost's master touch** by painting Christmas scenes or snowflakes on the inside of your windows. Kitchen cleanser mixed with water, or tempera poster paint is applied with fingers or a brush. Matchstick defines lines. For snowflake effect, use paper doilies held tightly to glass as a stencil. Apply paint, dry, remove doily.
7. **Tree light troubles disappear** if you make this simple tester for series bulbs (entire string goes out if one bulb is defective). Tape two standard flashlight batteries to metal strip bent to make contact as shown. Give each bulb a quick check before inserting in socket. Another tree-trimming tip: before putting them up, mark each string of light sockets with tape of a different color. Then, when one goes out, you'll know just which bulbs to check!



7





got any **ROOMS**  
**FOR IMPROVEMENT?**

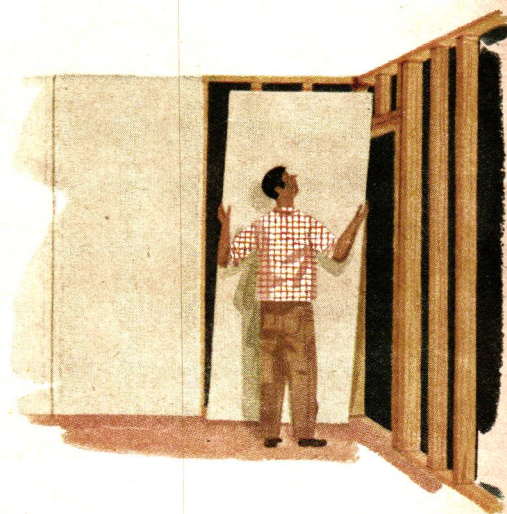
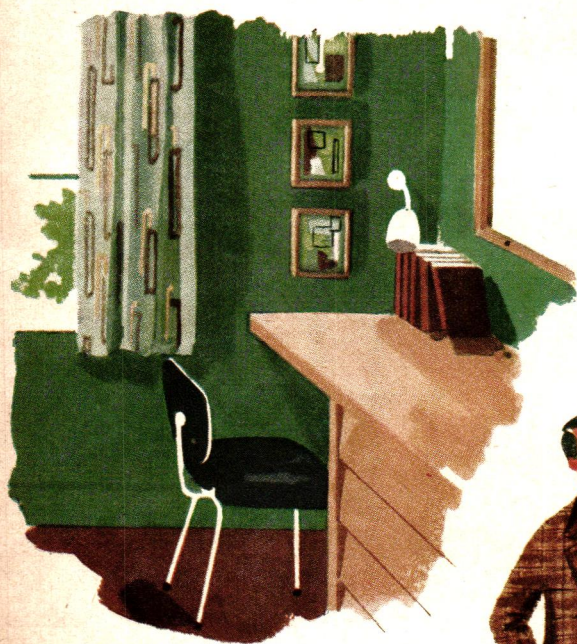
Planning's fun... Remodeling's a breeze  
with your ideas and our ideas and...

## SHEETROCK

T. M. Reg. U. S. Pat. Off.

**The Fireproof Gypsum Wallboard**

How about an attic hideaway for Dad, doubling as another room when guests come or your family grows? More closets are always welcome, too. Whatever your ideas, bring them in—remodeling's a breeze with fireproof SHEETROCK gypsum wallboard. It builds fast, takes any decoration, lasts and lasts. Let us help you plan. *Free estimates.*



POPULAR HOME MAGAZINE: Holiday Issue, 1952, Vol. 9, Number 8; Mailing Date: November-December, 1952. Published by United States Gypsum Co., 300 W. Adams St., Chicago 6, Ill., and sent to you eight times a year through the courtesy of the firm named on the covers of this issue. POPULAR HOME is devoted exclusively to the construction, decoration, care and repair of the home.



1902 • 1952  
**50**  
YEARS

**NOTICE:** The following trade-marks are owned and/or registered by United States Gypsum Co. in the U. S. Patent Office, and are used in this publication to distinguish the indicated products manufactured only by this company. USG (plaster, lime, tile, paint, wallboard, plaster base, roofing), TEXOLITE (paint), DURAVAL (rubberized paint), TEXTONE (plastic wall paint), CEMENTICO (wall coating), SHEETROCK (gypsum wallboard), ROCKLATH (plaster base), PERF-A-TAPE (joint reinforcement), RED TOP (plaster, insulating material and other products), GLATEX (shingles), WEATHERWOOD (fiber insulating board), MORTASEAL (lime), INSO-BAK and BLENDTEX (insulation board), SHADOW-LOCK (attachment system), DURON (hardboard), SUPER-TITE (roof coatings), ORIENTAL (stucco, plaster), STRUCTO-LITE (plaster), QUIETONE (fiber acoustical tile), ADAMANT and SHINGL-ROL (roll roofing), TRIPLE-VENT (basement sash), SABINITE (acoustical plaster), COLOR-RITE (metal lath), PYROBAR (partition tile).

The Greatest Name In Building

Copyright 1952, United States Gypsum Co. Printed in U.S.A.





*Dreaming's very nice*

**BUT** . . . LIVING's better! Yes, living in the new or remodeled home you've dreamed of is far, far better. And we're here to help you get started on your plans for better living in a nicer home. Come in! We think we have the very ideas you need to convert those dreams into better living **NOW**.



## Wardwell Lumber Company

Visit Our One Stop Building Service Center  
 Tupelo Street At Halfway Hill Phone 1-0056 or 1-0057  
 Bristol, Rhode Island

6041

OSCAR BERNIER  
 HERZIG ST  
 BRISTOL R I  
 6041-28

Sec. 34.66 P. L. & R.  
 U. S. POSTAGE

**PAID**

Chicago, Ill.  
 Permit No. 4511

*Wardwell Lumber Co.*  
*1500 1/2 St.*