

POPULAR

THE HOMEOWNERS' HOW-TO-DO-IT MAGAZINE

HOME

Summer, 1953



*Highlights for a
Handsome Home . . . page 3*



*There's an Extra Room
in the Garage . . . page 6*



*How to Equip a Corner
for Mother . . . page 12*

**Wardwell Lumber Co.
Bristol, R.I.**

House of Warm Welcome . . . page 8



*Let us help you
pull your wishes
out of the well*

Wishing wells are fun—but we think we've got a better plan for making your better living dreams come true. Come in and talk over your ideas with us. Chances are we can quickly show you how to have that new or remodeled home lots sooner than you'd hoped for.

*Stop wishing,
start planning with us now!*

**COME IN OR PHONE.
OUR NAME AND ADDRESS
ARE ON THE COVER.**

We are sending you this magazine throughout the year as a part of our helpful service to home-loving families.

POPULAR HOME

SUMMER • ISSUE 5 • 1953

INDEX OF
FEATURES

- REMODELING** Entrances, Canopy 3 • Window Types 4, 6, 8, 12 • Closet Doors 4
Cabinets 4, 8, 13 • Mantels, Fireplaces 5, 6 • Stairways 5
Sunroom Addition 6 • Garage Conversion 6 • Window Seats 12
- NEW HOUSES** Exterior Details 8 • Cupola 8 • Folding Partition 8 • 3-bedroom Plan 8
Pass-thru Counter 9 • Lightweight Plaster 9
- DECORATING** Color Schemes 5, 6, 8, 10, 11, 13 • Window Treatment 6, 8, 12, 13
Children's Rooms 8 • Sewing Rooms 12 • Adjoining Room Colors 11
- HOW-TO-DO-ITS** Wall, Ceiling Construction 7 • Stacking Stools 10 • Sewing Cabinets 13
Fold-down Table 13 • Study Desks 12, 14 • Stairway Storage 14
- MAINTENANCE** Interior Painting 10, 11 • Drawer Repairs 14 • Landscaping 14

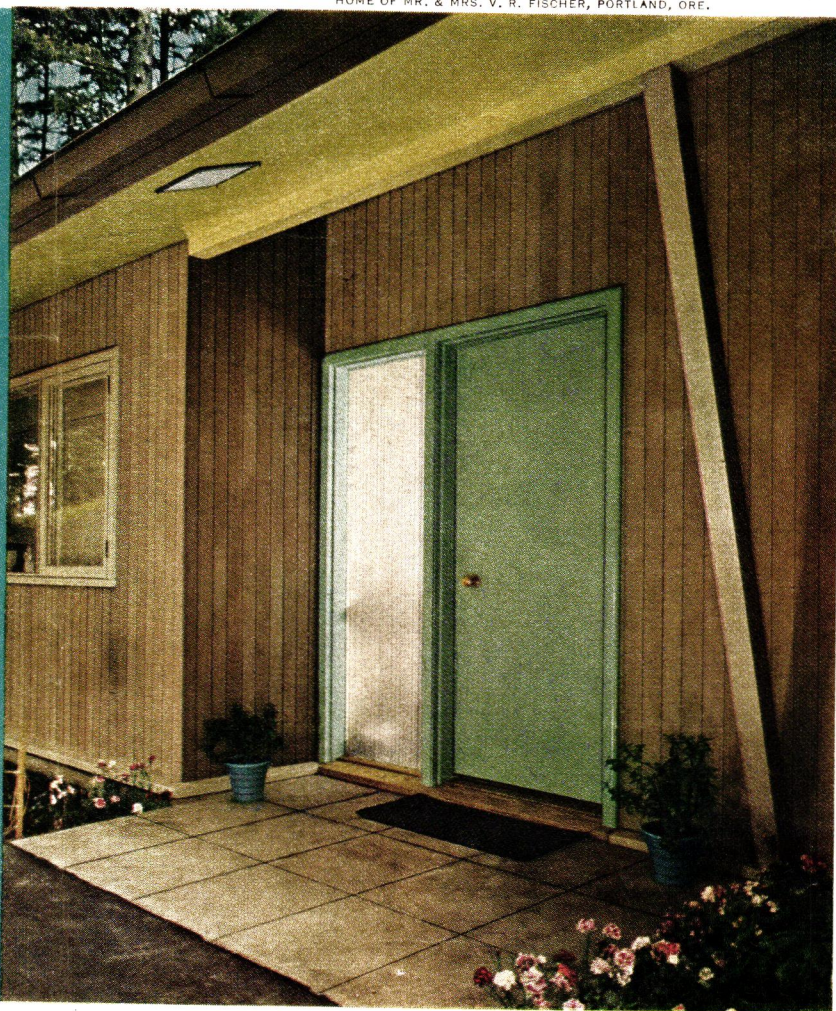
highlights for a handsome home

For Beauty and Livability, Minor Changes in Woodwork Can Accomplish Wonders

It's the details of a house which give it charm and individuality, and which at the same time can make it more livable. Under the heading of architectural woodwork, the list includes doorways, windows, doors, cabinets, fireplace mantels, stairways, and other items.

If you're not proud of those in your house, see your local lumber dealer about the features that can be replaced or added. He offers a wide selection of stock woodwork in designs created by leading architects, and will surprise you with the changes that can be made at modest cost. It's the kind of work that's easily financed through the dealer or your local lending institution, and much of it you can do yourself. For better appearance and more pleasant living, minor remodeling like this can accomplish wonders—your house will never be the same!

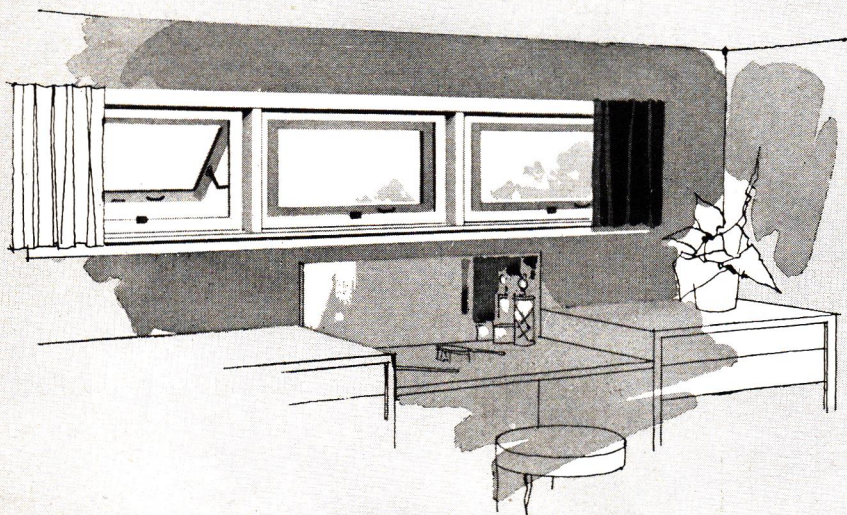
HOME OF MR. & MRS. V. R. FISCHER, PORTLAND, ORE.



Start with a welcome

at your entrance—a delightful color combination in the contemporary manner, as in the photograph above, or with a new stock entrance in any style you choose (at left). Sidelights brighten the hallway, can be used for decorative display, are available with stock doorways. Examples at left show variety of Colonial or more simple styles available, include one with protective canopy and lattice panels at sides.

(Continued on Next Page)

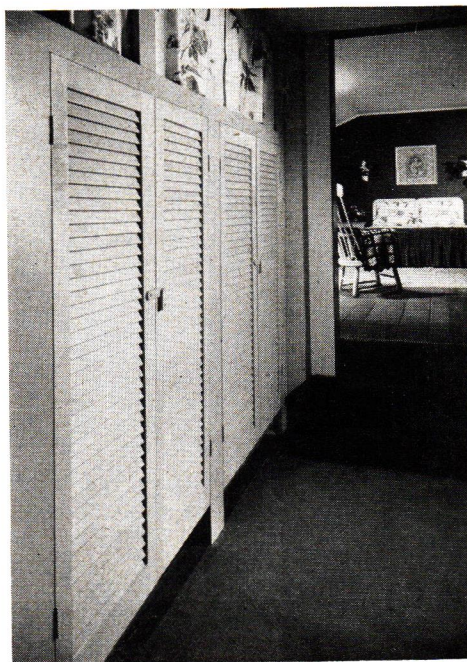


Windows mean everything

to efficient use of space inside house, as well as furnishing light and ventilation. Drawing at left shows how wall space for furniture is gained when high ribbon-type windows are used—in single, twin or triple units. Photo at lower left shows what you gain by adding a bay—pleasant dining, and an out-of-the-way place for the table. And to modernize the middle-aged house, nothing beats a big new picture window, easily installed (below). Several types come in stock sizes.



HOME OF MR. & MRS. LESLIE A. WOOD, PRAIRIE VIEW, ILL.



HOME OF MR. & MRS. R. H. KIRTLAND, WINNETKA, ILL.

Doors can do tricks

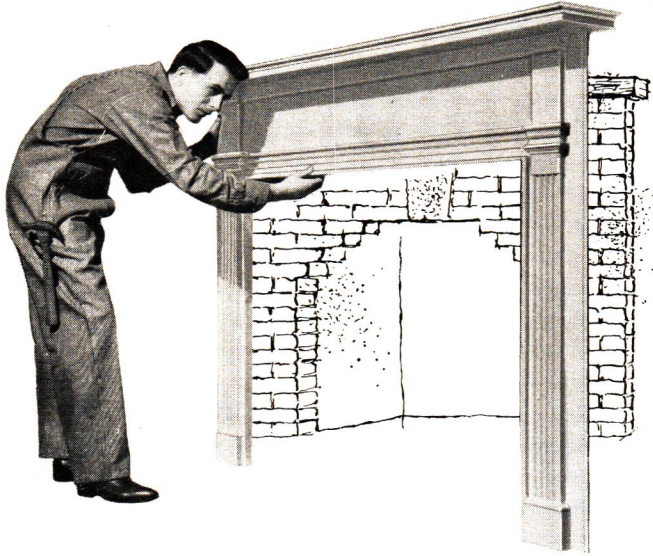
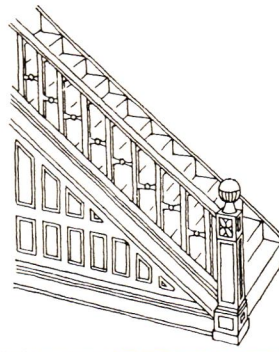
Smartly-styled interior doors help improve the appearance of your home, but they also aid ventilation if you use the louvered or "slat" type as in this example. Extra space in a hallway or bedroom can be converted to a closet wall without partition work by this method. Curtains cover upper cabinets, and doors are hung well off floor for air circulation. Your dealer supplies the doors assembled and ready to finish. You can build the door frames.

Cabinets are versatile

Space-saving cabinets answer many storage problems, and you cut costs by buying them unfinished from your lumber dealer and installing them yourself. A corner china closet (extreme left) conserves space in the dining or living room, is decorative and useful. Most stock closets have this lower cabinet, some have glass doors.

Modernize the stairway

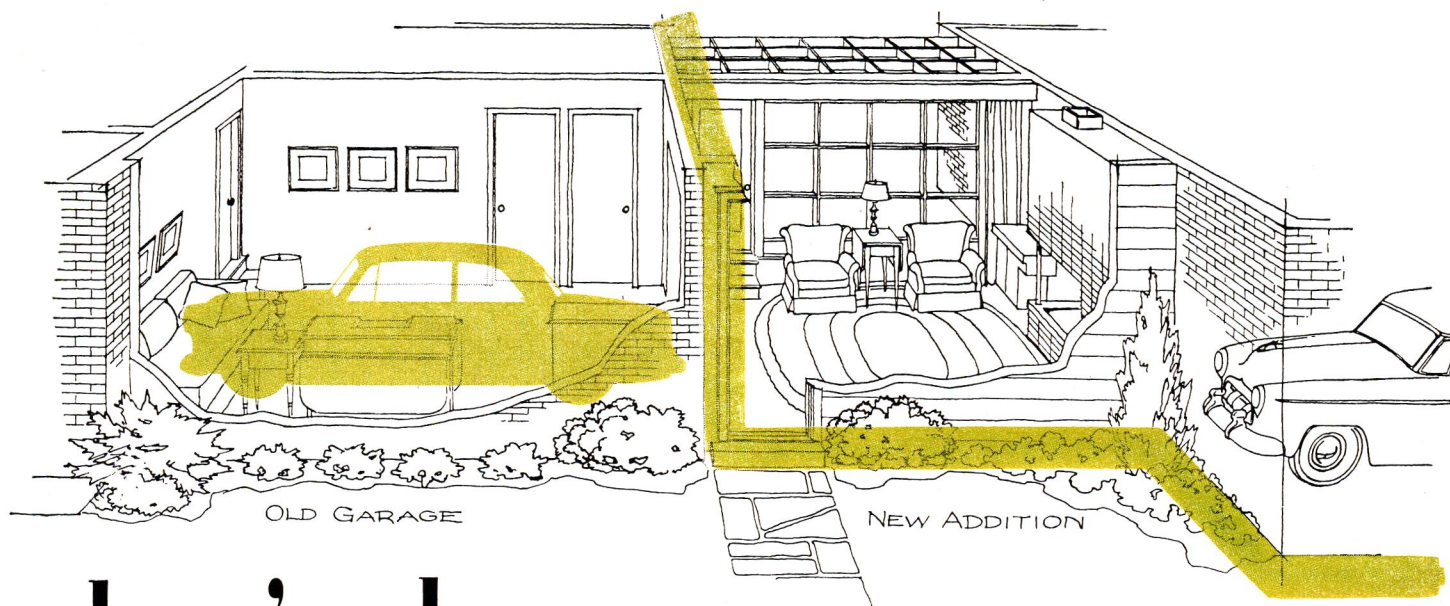
If you've inherited an ornate Victorian stairway like that inset at right, it's a comparatively simple operation to bring it up to date. The color photo shows one solution, using a post and handrail for simplicity. Another is to replace the newels and balusters as well as the handrail, with standard stair parts available in a variety of styles. Where old wall paneling is removed, plaster patching or a new fire-resistant surface of gypsum wallboard will complete the transformation.



Reface the fireplace

It's an easy matter to tear out the projections of an ugly old fireplace (top) and cover it all with a beautiful new mantel. Stock mantels come in many designs, some are adjustable to opening size. If you prefer a custom installation, as in color photo, your dealer can recommend a contractor. This flush-type mantel has colorful tiles inset around opening.





here's where we kept the car!

*That extra room you need
may be in the garage—
here's what to do with it*

Summer is wonderful when you divide it between a sun room overlooking the garden, and the patio outside. Room added by Alexanders has window wall facing south, with new garage located beyond fireplace wall. Fireplace serves as planting box in summer.



Double dividend for the Alexanders was two new rooms for little more than the price of one: the converted garage extended by the new addition. Same effect in other houses would be to build addition to front or rear of attached garage, or to build a room between the house and a detached garage. Either adds living space at bargain.

THERE'S at least one sure-fire way to gain more living space in most houses: build a structural addition, or, if you have an attached garage, convert it into a livable room. You can even do both at once, with the kind of results that were obtained by Dr. and Mrs. H. A. Alexander of Boulder, Colo., in their home.

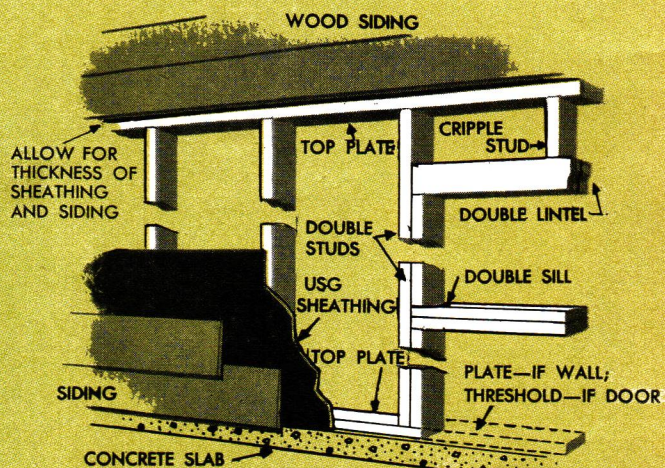
The possibilities are unlimited—you can create a delightful sun room and a convenient study-guest room, as the Alexanders did. Or, you can make it a bedroom, a dining room, a kiddies' playroom, a screened breeze-way, or a workshop-hobby room for father.

Your family may need the space far more than the car does, and you can always build another garage or carport later. Much of the work is the kind you'll enjoy doing yourself, with modern building materials that are right for the job. Get the advice of the local firm named on the covers—it's their business!

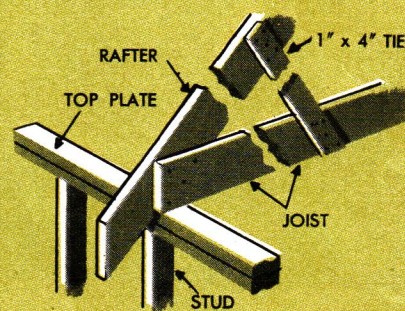


The car's been evicted, and study-guest room takes its place. Former garage door opening (foreground) now connects two new rooms. Remodeling consisted principally of finishing floor, walls and ceiling with easy-to-apply materials illustrated at right.

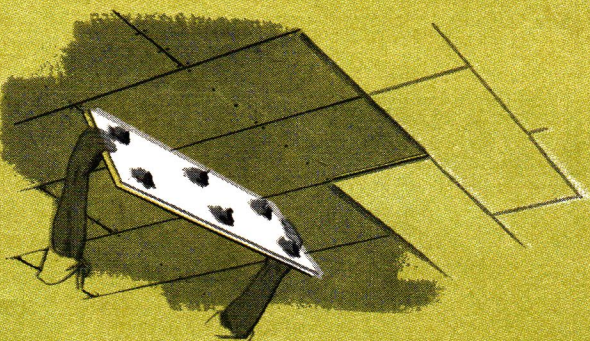
Garage Conversion Tricks That You Can Perform



Construction detail shows how to close garage door opening to make solid wall, door, or window. Materials are stock: 2"x4" and 2"x6" framing lumber, sheathing, and wood or other siding.



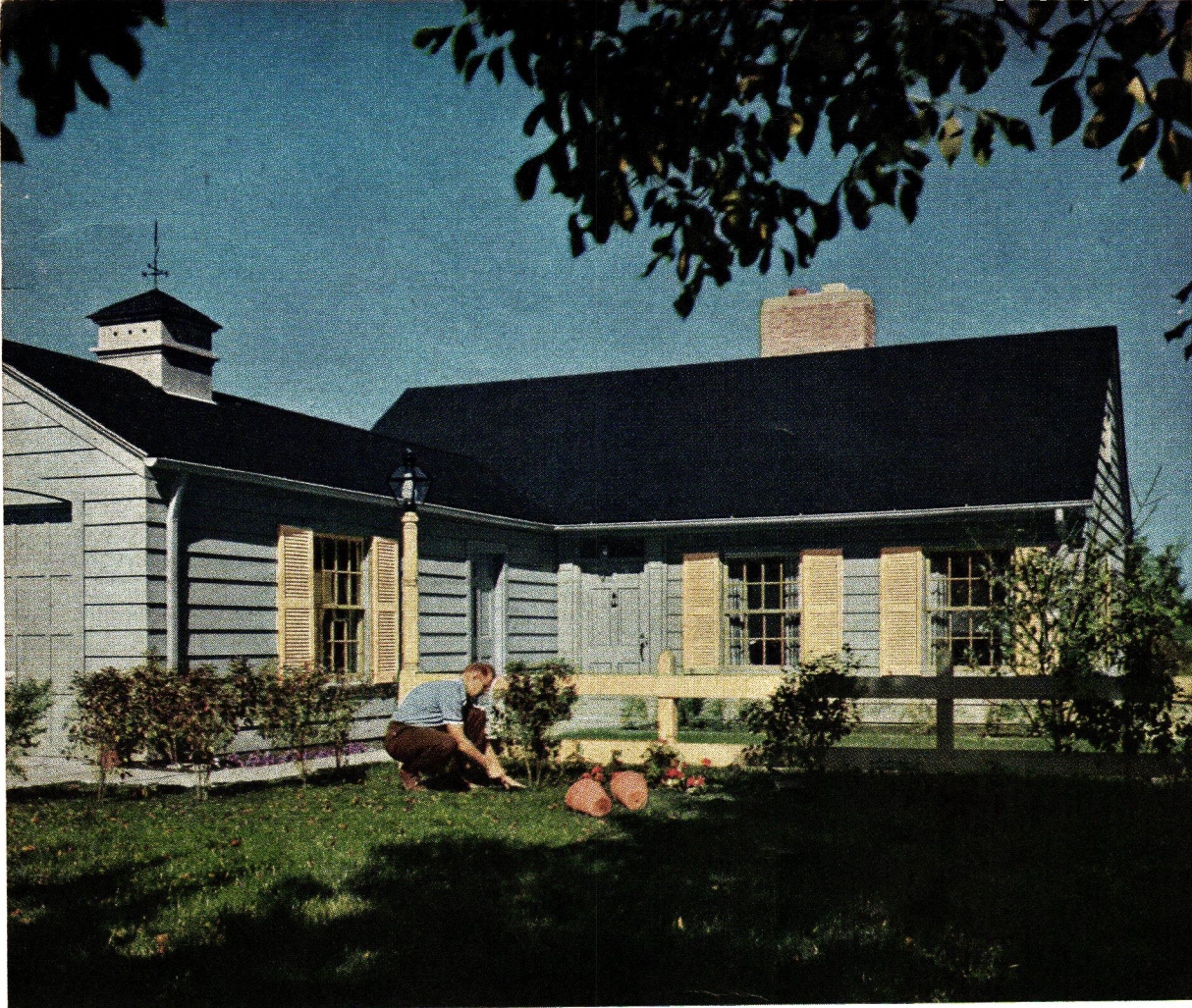
If your garage has only tie joists, you'll have to install new 2"x6" joists 16" on center. Detail shows method of fastening joist ends to rafters. If joist must span more than 12 feet, tie to rafters with 1"x4".



For a smooth serviceable ceiling, cover joists with ROCKLATH plaster base, then apply 12x24 or 16x32-inch panels of USG insulating Panel-tile with an adhesive. Kwik-Lok Joints permit snug fit.



Wall finishing's a breeze with big 4x8-foot panels of gypsum wallboard, nailed directly to studding. Insulate with RED TOP insulating wool, shown here, or foil-backed insulating wallboard. Another good wall surface is new Panel SHEETROCK, in 16-inch wide panels.

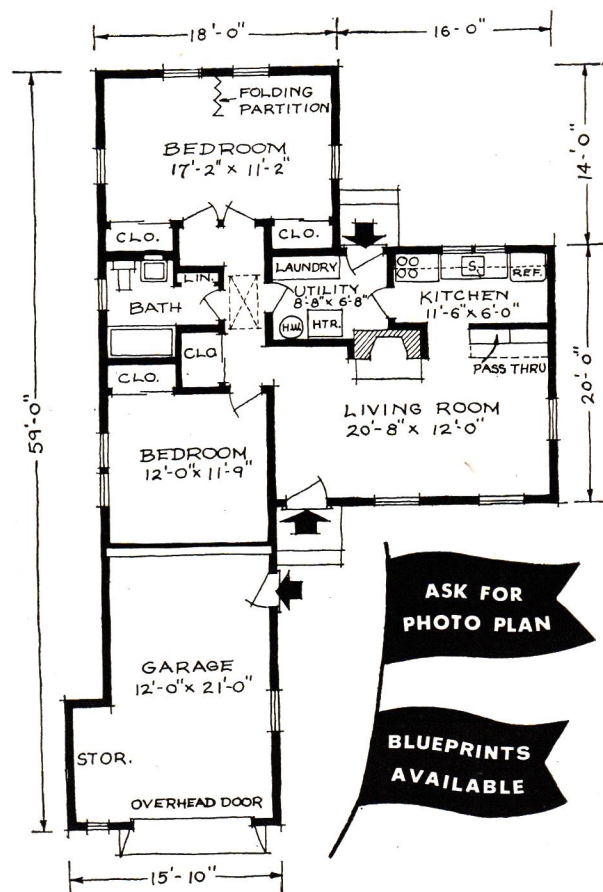


PHOTOGRAPHY: HEDRICH-BLESSING

Inviting exterior is given Provincial feeling by shutters, lamp post and low fence in second color, garage roof cupola. Complementing moss green siding is roof of black USG Thick Butt asphalt shingles. Garage has workshop-storage alcove and short driveway, particularly important in areas where snow clearing is problem. Attic has large storage area accessible by folding stairway in bedroom hall.



Happy-day playroom in rear becomes two bedrooms by dividing with accordion partition sliding in ceiling track. Each side has cross ventilation and is served by sliding-door closet. Ceiling of QUIETONE fiber acoustical tile lets John, 3, and Steven, 5, romp in peace. Draperies are rayon and cotton in giraffe pattern, bedspread is of plaid denim.



SIZE OF HOUSE: 978 SQ. FT., 13,400 CU. FT. (EXCLUDING GARAGE). GARAGE: 310 SQ. FT., 3,400 CU. FT.

POPULAR HOME'S house of warm welcome

*Today's Convenience, Yesterday's Charm
Combine in This House for a Narrow Lot*

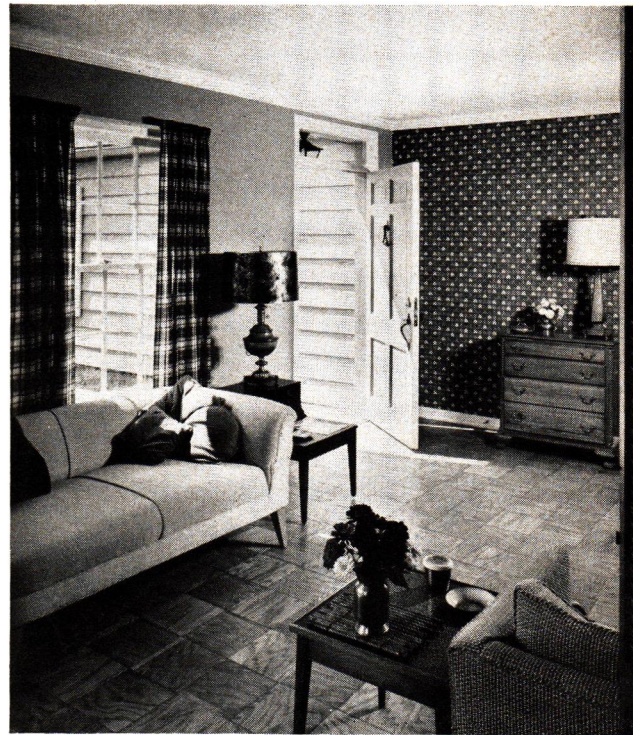
A TOUCH of tradition lends warmth and graciousness to POPULAR HOME's House of Warm Welcome, but all the conveniences of modern one-floor living are included. It's an economical low-budget house with a convertible three-bedroom arrangement, a pass-through breakfast counter, a fireplace, and an attached garage. And it requires no more than a 50-foot lot.

The house was built by Jones & Duncan, architect-designers of Highland Park, Ill., as a testing ground for the best of today's building materials. Wood exterior construction, radiant heating, and a recently-developed lightweight plaster in the interior finish have proved out to the architects' highest expectations.

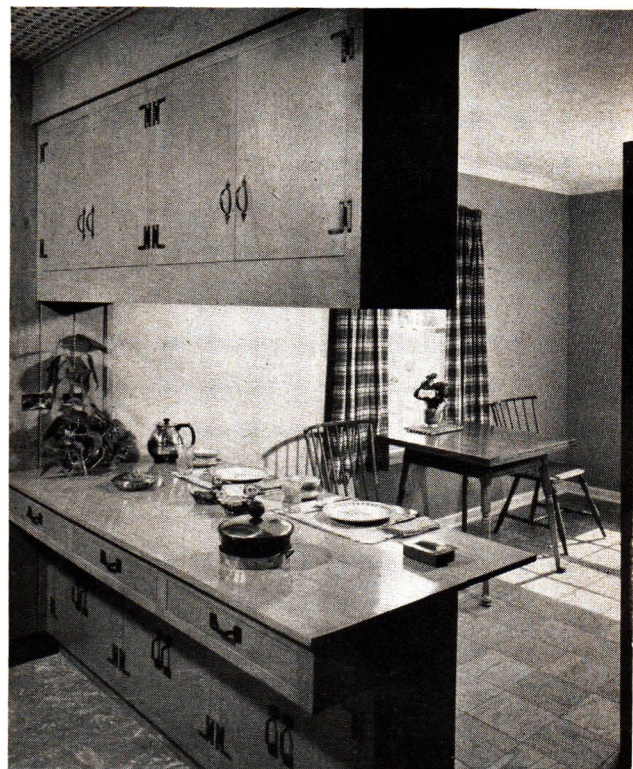
You can build the House of Warm Welcome for your own. Step into the local firm named on the covers and pick up POPULAR HOME Photo Plan 53-5, with more pictures and technical information. If you're convinced it's for you, ask the helpful people there to order complete building blueprints of the house—No. PH 10-5A, as presented here, or No. PH 10-5B for the plan with basement. Both are available with reversed floor plans.

DECORATOR: RUTH W. LEE

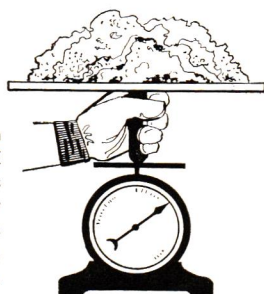
FURNISHINGS BY MARION HEUER INTERIORS



Entrance says "welcome" in well-lighted living room that has added interest of oak block floor and acorn patterned wallpaper. This wallpaper was selected for this year's famous Good Design exhibit in New York and Chicago. Lath and plaster provide decorating base for cocoa painted walls, Gardenia White ceiling. Denim draperies are in dark green, rose and white plaid.



Handsome, step-saving feature between kitchen and dining area is pass-through arrangement of cupboards with drop-leaf counter on dining side for breakfast, snacks. Stools can be used on either side. Louvered wood screen at right shields archway. Kitchen adjoins laundry area, has double window over sink offering view of rear play yard.



Great new improvement used to advantage in House of Warm Welcome was STRUCTO-LITE gypsum basecoat plaster. Because it contains lightweight perlite aggregate, this revolutionary new plaster reduces dead weight on wall by as much as 50 percent, also increases fire resistance. It's one way of boosting your home's resale value.



get your
FREE
easy-to-
build
PLAN

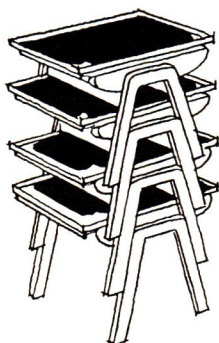
STACKING

Snakstools

**They'll do Double Duty in the Living Room.
Make 'em Yourself!**

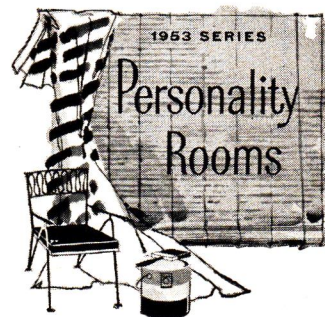
ENTERTAINING IS EASY and family gatherings are fun with double-duty Snakstools that you can make at home. They make comfortable and sturdy seats, and have a buffet-snack tray that can be used separately or fits snugly on the top to give you a chair-side table. Designed exclusively for POPULAR HOME, they require only a few pieces of stock lumber, DURON Hardboard, screws and furniture glides, and your choice of twine, cord or plastic for the seat surface. Your lumber dealer will supply the materials—you can make them complete for less than \$2.50 each!

DESIGNED BY D. E. NUGENT,
ASSOCIATE EDITOR



BUILD 'EM FROM A FREE PLAN AND STACK 'EM UP

Snakstools are misers with floor space—they stack securely in less than 2 sq. ft. The top measures 15x18 inches, is 16 inches from floor. Make 'em four at a time, from complete directions in a Free Snakstool Handyman Plan you can pick up from your POPULAR HOME sponsor. Get there early for yours, and get going!



Color through the doorway

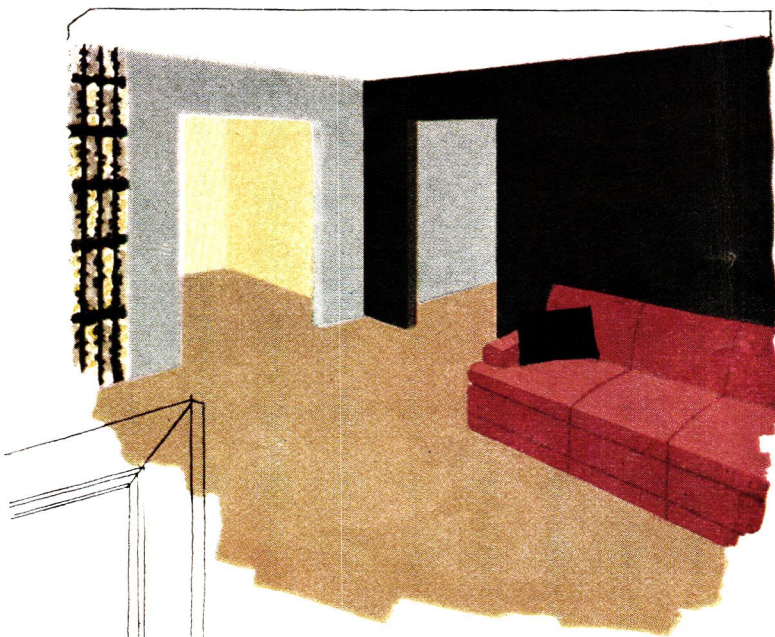
*How to team one color with another—
in adjoining rooms*

COLOR SETS a mood. Effectively used, color gives a house spirit. In planning a color scheme for a room from which other rooms can be seen, remember that the overall effect should be considered because colors in adjoining rooms become a part of your room scheme. Although it is not essential that wall colors in adjoining rooms be matched, be sure to combine wall colors that are in harmony and to repeat at least one important color in your draperies, furniture covers or rugs. By doing this, you'll gain a pleasing relationship of color from room to room and, especially important in a small house, a feeling of greater space.

Your wall color sets the mood of your room. It can give a tiny entrance hall a welcoming air, a sunless dining room a feeling of cheer. The result is great, the cost is small . . . with newly painted walls, you can give each room its own personality and still retain a pleasing flow of color from room to room.

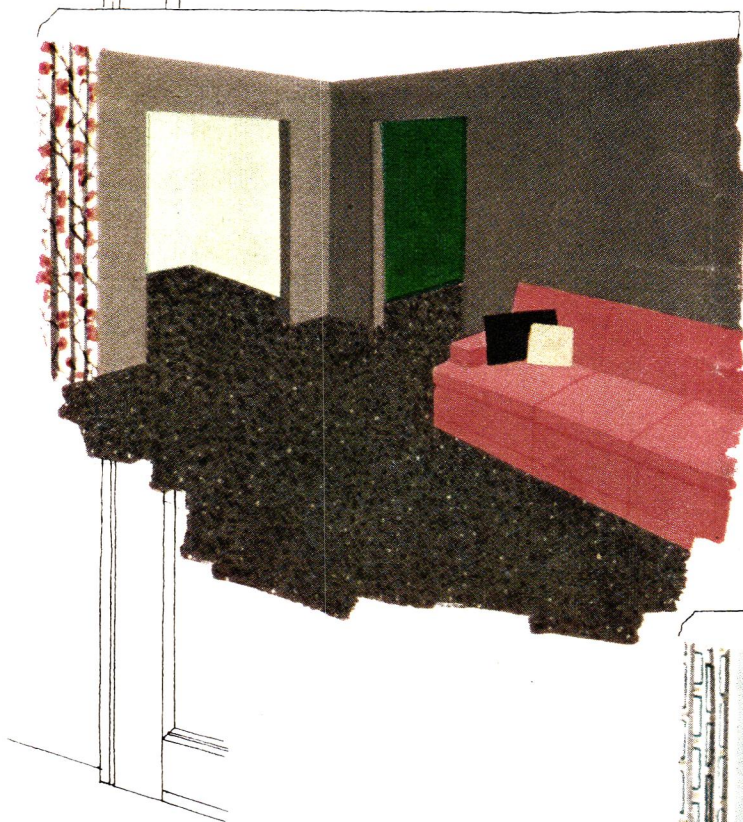
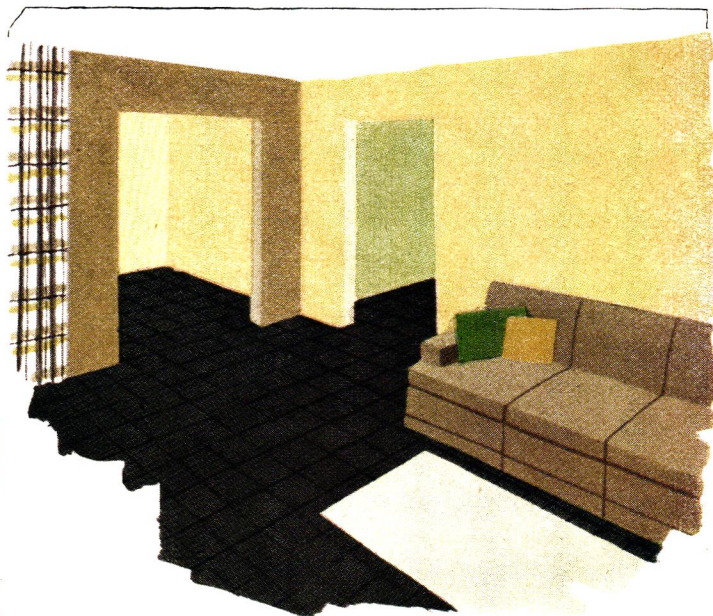
By Cynthia Montgomery

Color schemes for adjoining rooms, shown on opposite page, are based on paint color combinations shown in the TEXOLITE DURAVAL Color Selector, now on view in paint stores.



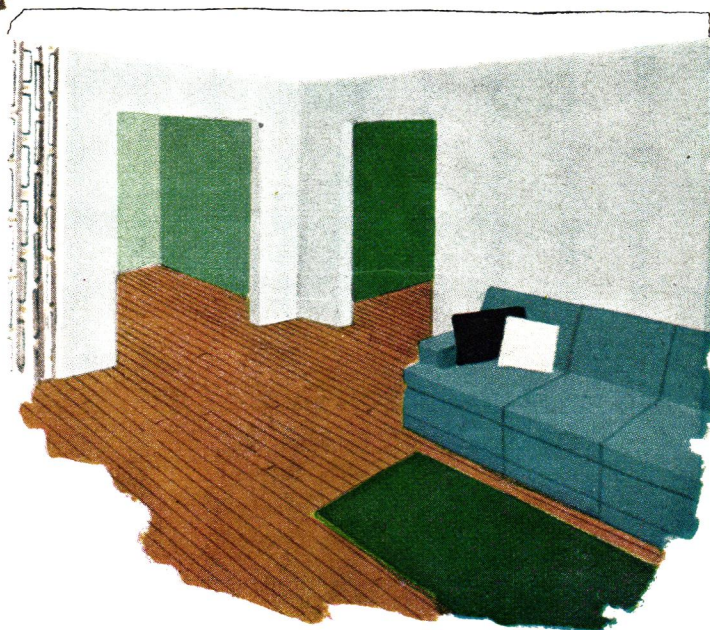
Congo Brown on 3 walls, **Sheffield Gray** on 1, with **Golden Beige** used on floor, make possible a wide variety of accent colors. Here, the accent color is **Candlelight** on walls of the adjoining room.

Walls of Candlelight and Desert Sand are a good complement to dark tile floors and white ceiling. Looking through the doorway, **Sprite Green** is refreshing with the living room's warm wall colors.



Hearthstone color on wall and floor, especially pleasing in room with plenty of daylight, gives opportunity to choose similar tones, bright or light colors in furniture covers. Ceiling is **Gardenia White**. Other walls are painted **Lime** and **Jungle Green**.

Pottery Blue strikes a happy harmony with **Bermuda Surf** and **Sherwood Green** on walls of other rooms. Repetition of similar colors creates feeling of more space. Here, greens and blues with warm wood floor color give an airy atmosphere.





Important corner of this sewing center is devoted to planning desk and cabinet above. Both units are of type you can buy unfinished. Window seat has three drop-down doors for bulk storage—note use of matching floral chintz for draw curtains and cushions. Ceiling is of sound-softening fiber acoustical tile, quickly applied to old ceiling with adhesive.



our hearts were set on a room like this

*Here's the Way to Equip a Corner
For Sewing and Household Planning*

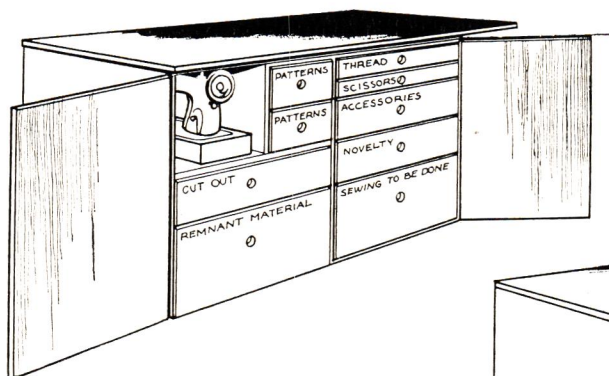
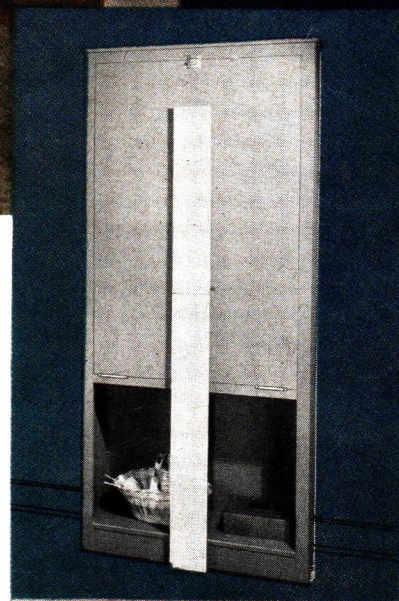
IT'S A STITCH IN TIME to give mother—and daughter, too, if she's interested—a quiet, well-equipped corner in the house that she can call her own—especially if her hobby is sewing. Her life is easier and she gets more accomplished with the proper work surfaces and storage space for the task. If a desk is included, it becomes her household planning center as well.

A spare room is ideal for the purpose, but not necessary. If you have a good-sized bedroom or a large dining room, make one side of it her sewing headquarters. All that's required is some simple carpentry that the handyman of the house can do, together with an unfinished cabinet or two from your local lumber dealer's stock. The tricks illustrated here were done in a 10x14-foot bedroom, and there are elements that fit into any corner of the house. A lady in your family deserves them!

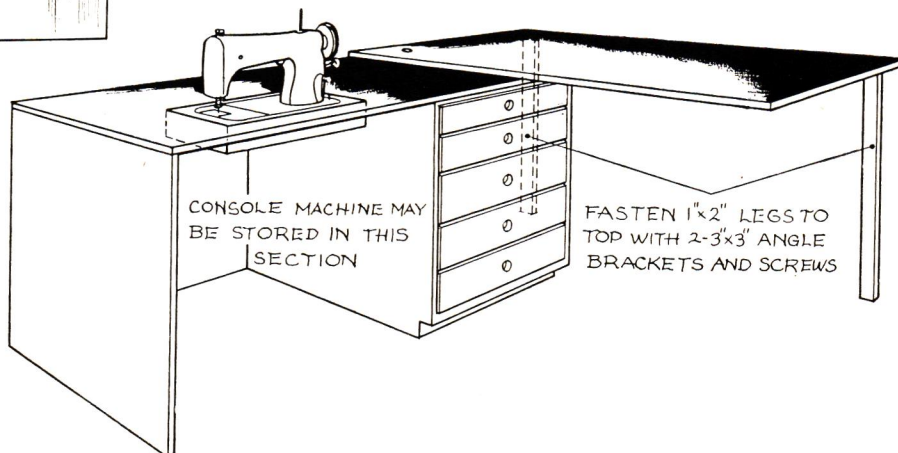


PHOTOGRAPHY: HEDRICH-BLESSING

Business end of room has work counter 34 inches from floor, with section below for console-type sewing machine mounted on casters. Sturdy hinge-down table and case require only 10-inch depth (right), provide 3x5-foot layout and cutting surface when down. How to build it? See directions in Photo Plan 52-8, available through your POPULAR HOME sponsor. Walls are painted in Canterbury Blue.



Build 'em yourself—two other sewing cabinets for crowded corners are sketched here. Above, same cabinet as in color photo is partitioned for storage of portable machine. Drawers are of wood with DURON hardboard bottoms. Combination unit (right) has pivoted top that forms work table, can be built with well in top to hold portable machine. Stock cabinet unit with drawers serves as base. See your local lumber dealer for all materials.





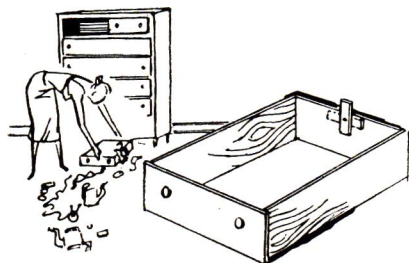
THE HOUSEHOLDER'S

Pride and Joy COLUMN



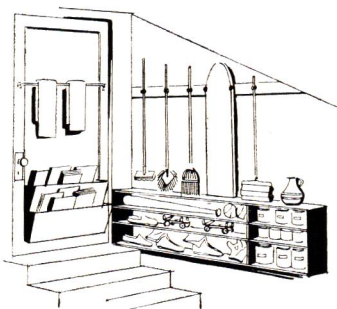
Double-Duty delight is this home-made unit that combines desks for boys, vanities for girls. Stock cabinet units and a plywood top, purchased from your lumber dealer, make the unit easy to construct.

Mrs. Leon J. Weiner, Cleveland, Ohio



Save your temper and your toes, keep drawers where they belong. Fasten piece of boxwood $\frac{1}{2}$ "x1"x3" to back of drawer with screw. Turn to vertical to keep drawer in place, to horizontal to remove drawer.

Margaret C. Lauder, San Pedro, Calif.



Step-down storage can be provided in basement stairway with hangers and shelves 6 inches deep. Back of door accommodates towels, magazines; wall takes ironing board, cleaning equipment.

A. L. Jordan, Maplewood, N. J.

Edited by C. Eugene Pfister,
national authority on horticulture



trees and shrubs the frame for your home

By Oakley V. Morgan

The trend is toward planting fewer trees and shrubs but choosing carefully what, where, when and how to plant them.

The tall spreading elm types are best where there is lots of room to plant trees and where you want shade for a two-story house. If space is limited, the upright elm, maple, oaks, and bolleana poplar are best for framing and shade. For driveways, parks and other open areas, the rounded Norway maple is one of the best.

The trend toward lower rambling ranch type homes has created the demand for intermediate size trees such as the Moraine locust and English linden. On lighter, less fertile soils, or where moisture is apt to be scarce, the honey locust, tree of heaven, and ginkgo usually seem to thrive better. If you want to add color, contrast and fragrance to the landscape, choose the spring flowering hawthorn, crab apple, wild cherry, tulip tree, and plum.

There are many evergreens for screening, year 'round beauty, or windbreaks, such as Norway spruce and pine, Scotch, Austrian, Red, White and Norway pine. See your county agent or local nurseryman for recommended varieties for your area.

Trees can be successfully planted any time of the year. However, planting deciduous trees while they are in full foliage increases the risk of losing them. Fall or spring planting are believed to be the best by experienced plant movers. Spring planting seems to be more preferable but time

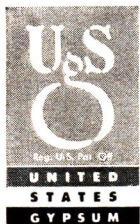
is often limited when soil moisture is high.

The ideal time for tree moving is on a cloudy day when the soil is moist but does not form a mud ball when pressed in the hand. The hole should be conveniently large to allow the roots to spread out, and loose soil should be worked around them. When hole is half filled with dirt, it should be filled with water. (If soil is dry, repeat several times.) After water has drained away, add the rest of the soil but do not tamp. Organic fertilizer, peat moss or decayed manure can be mixed with the soil before it is placed around the tree.

Maples, oaks and similar hardwood trees should be planted with a ball of earth if the trunk is larger than 2 inches in diameter. Elms, hackberry and more fibrous rooted trees up to 4 inches in diameter can be planted successfully with ball of earth. The same general rules of planting deciduous trees also will apply to evergreens.

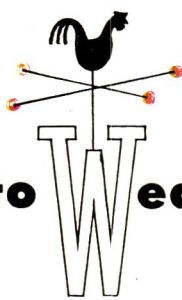
Changes in architecture have brought about changes in shrubbery planted around the home. Modern ranch type homes require the low spreading evergreens, creeping junipers, dwarf yew, mugho pine and pfitzer junipers. They are enhanced by the shorter growing deciduous shrubs such as dwarf quince, roses, hydrangeas, spireas, cotoneasters and compact euonymus. Hedges are often planted to dwarf ninebark, cotoneaster or dwarf honeysuckle.

For older or two-story homes, the same types of shrubbery can be used and can be permitted to grow larger, if desired. Others recommended are the mock oranges, lilacs, golden bell forsythia, high bush cranberry. The same general planting rules apply to shrubs as to trees.



POPULAR HOME MAGAZINE: Summer Issue, 1953, Volume 10, Number 5; Mailing Date: July-August, 1953. Devoted to better living and better building, it is sent to you eight times a year through the courtesy of the firm named on the covers. Published by United States Gypsum Company, 300 W. Adams St., Chicago 6, Ill.

NOTICE: The following trade-marks are owned and/or registered by United States Gypsum Company in the U. S. Patent Office, and are used in this publication to distinguish the indicated products manufactured only by this company: USG (insulating board, roofing and other products), RED TOP (plaster, insulating materials and other products), TEXOLITE and DURAVAL (paint), SHEETROCK and PANEL SHEETROCK (gypsum wallboard), ROCKLATH (plaster base), STRUCTO-LITE (plaster), QUIETONE (fiber acoustical tile), DURON (hardboard).



want to **W** weather condition



your home?

← from this
to this

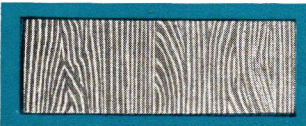


ask about USG* asphalt shingles



Keep your home *under safe cover* with USG THICK BUTTS, the asphalt shingles that are extra-heavy where weather and wear hit hardest. Wide selection of colors including Tu-Tones, new pastel blends. Fire-resistant.

ask about GLATEX* siding



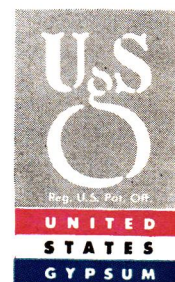
Keep out drafts and dampness "all around the home" with GLATEX asbestos-cement siding. Beautiful glazed finish—washes like a dish, never needs painting, fireproof. Goes right over old exterior walls.

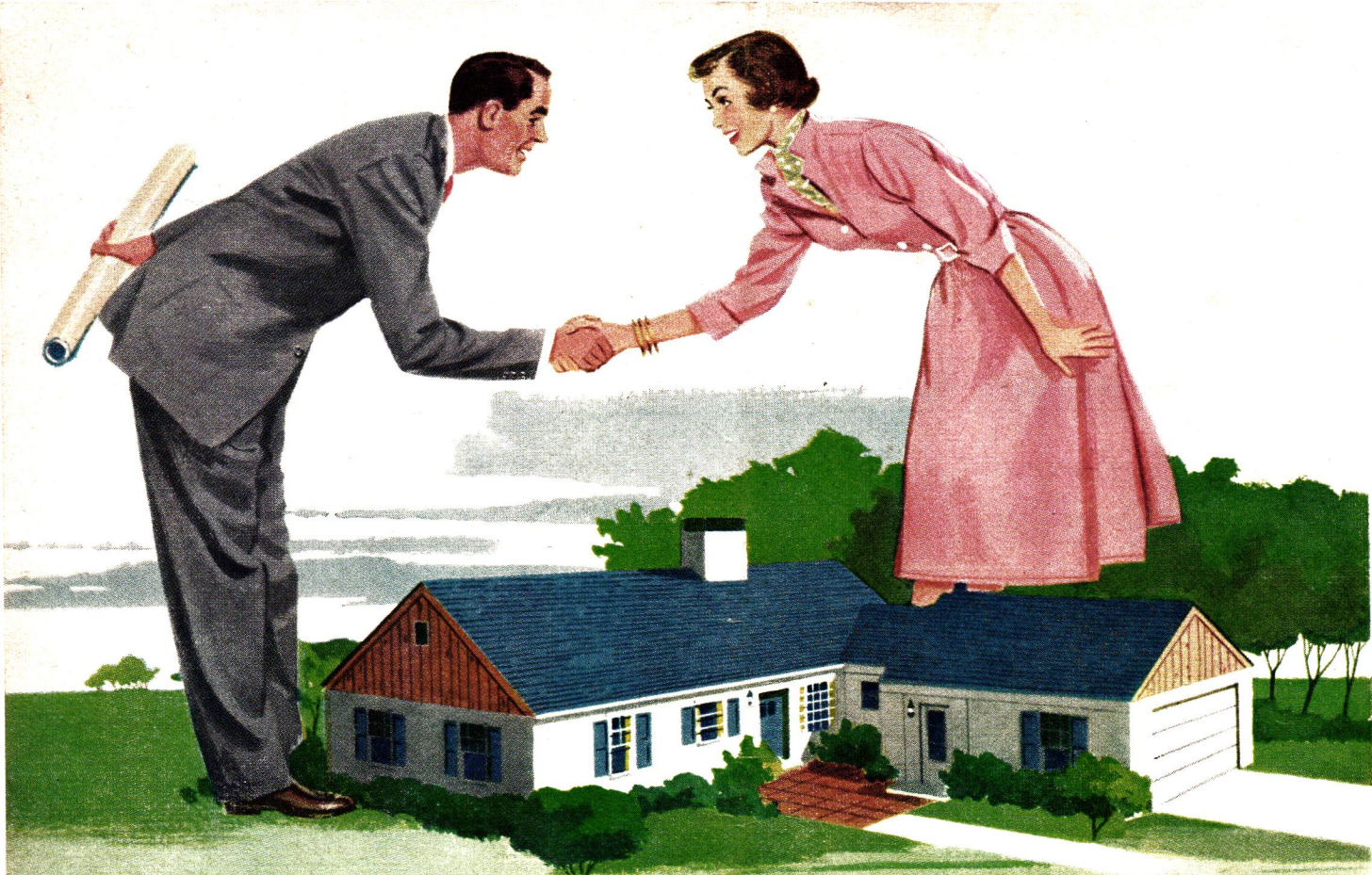
*T.M. REG. U.S. PAT. OFF.

want to get started?

Ask the dealer who displays this famous sign
or write United States Gypsum, Chicago 6.

UNITED STATES GYPSUM
The Greatest Name in Building





Congratulations, neighbor!

It's really a pleasure to meet up with a homeowner who has realized his dreams of pleasanter, more comfortable living. And, naturally, our congratulations are even warmer when we've shared in making those dreams come true. Now we hope that, one day soon, we may join in *your* planning. For the sooner you come in, the sooner we can say, "Congratulations, neighbor!" to you.

Wardwell Lumber Company

Visit Our One Stop Building Service Center

Tupelo Street At Halfway Hill

Phone 1-0056 or 1-0057

Bristol, Rhode Island

RETURN POSTAGE GUARANTEED
POPULAR HOME

Dept. 126
300 W. Adams St., Chicago 6, Ill.

OSCAR BERNIER
HERZIG ST
BRISTOL R I
7744-25

Sec. 34.66 P. L. & R.
U. S. POSTAGE

PAID

Chicago, Ill.
Permit No. 4511