

idea file

FROM POPULAR HOME...
THE BUSINESS OF FARMING

FOR YOUR ATTIC REMODELING



Eye-pleasing walls are useful and decorative in this remodeled attic bedroom. End wall is of 16-inch-wide Panel SHEETROCK Wallboard, adhered to BAXBORD base layer with PERF-A-TAPE Cement. Built-in vanity and cabinet units were made of stock lumber. For how-to-do-it help, ask your U.S.G. dealer for a free copy of Handyman Plan No. 351 on Upstairs Remodeling.

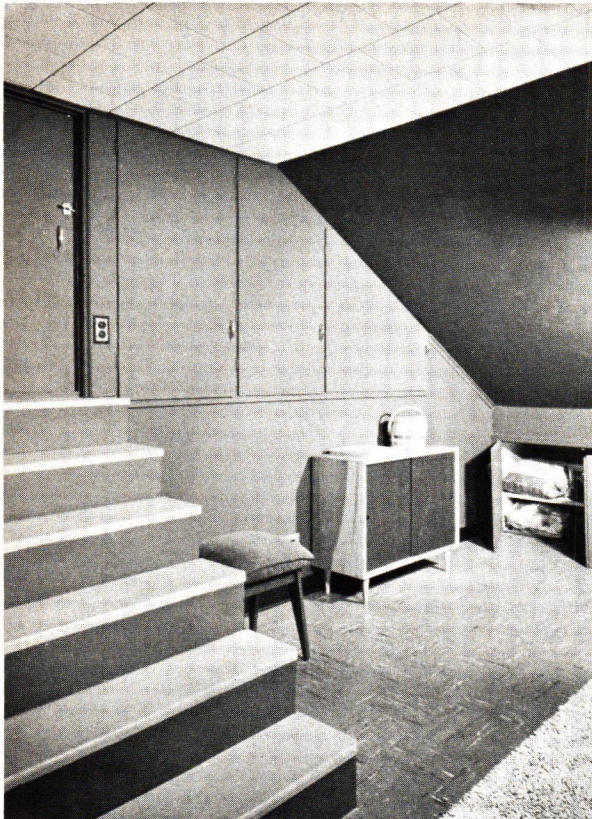
published by



UNITED STATES GYPSUM *the greatest name in building*

Copyright 1967 by United States Gypsum Company, Publisher, 300 W. Adams St., Chicago 6, Ill. The following trademarks are owned and/or registered in the U.S. Patent Office by United States Gypsum Co., and are used in this folder to identify products manufactured by that company: RED TOP (insulating wool, plaster); USG (insulating board materials); TEXOLITE (paint); DURAVAL (latex base paint); CEMENTICO (cement base paint); BLENTEX (insulating plank); ROCKLATH (plaster base); DURON (hardboard); BAXBORD (gypsum backing board); SHEETROCK (gypsum wallboard); PERF-A-TAPE (joint system).





Built-in storage space lines entire wall of this sleek-looking attic room. Shelves at right extend back to eaves. High cabinets accommodate clothes on pull-out rods. Steps serve unfinished general storage area. Ceiling is of USG Insulating Panel-Tile; slanting portion is painted a dramatic TEXOLITE dark color.

Here's another way attic knee-wall space can be used. Top of storage unit follows line of sloping ceiling. Shelves are for toys, drawers for blankets. Small fluorescent tube could be installed under shelf valance to provide an indirect night light for nursery. Ranch plank flooring was laid over old attic floor.



Center of attic between rooms is ideal place for wardrobe closets and shelves. Here, some of original studs were retained to serve as framing members between sections of closet. Sections are closed off by draw curtains.

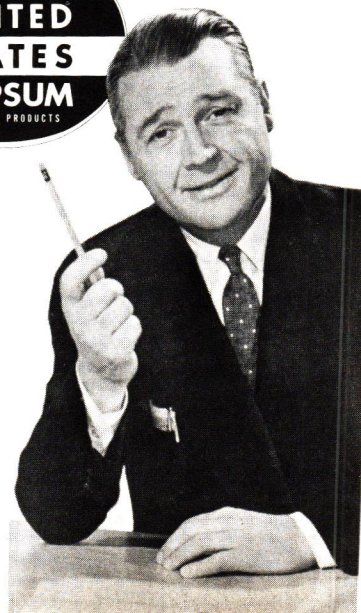


How to use a dormer: build in a desk or chest beneath the window and install recessed light fixture overhead. Kneewall closet for luggage, to left of desk, is example of how well even smallest waste area can be put to work.

Want help all the way?



Giving you this Idea File is only the beginning of the helpful service **we** can render in your building or remodeling work. We have Free Handyman Plans and the Remodeler's Guide to help you organize and do the job yourself, if you wish. We can recommend contractors and advise you on financing. For a new home, you're invited to look over our Family-Tested Homes plan book. We're **more** than a building material yard—we're Home Improvement Headquarters! And for quality materials, we're proud to be associated with United States Gypsum—the greatest name in building. Come back and get some action!





BEFORE ↗

AFTER ↘

This attic, like hundreds in every community, was a gloomy place used only for discarded possessions. Since its conversion, this corner is cheery child's room. Shelves and chest were built in to extend behind walls in a clever use of under-eave area. Walls of gypsum wallboard were finished with TEXOLITE Texture sand-finish paint. Pleasant and well-lighted, room doubles as serviceable play area.

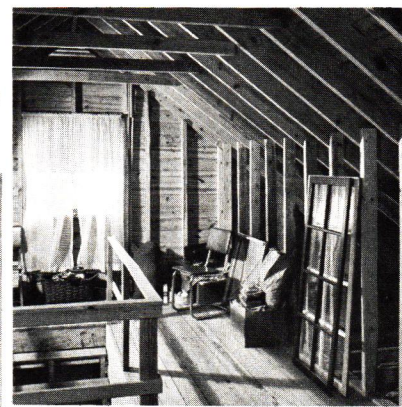


BUILT-INS SAVE FLOOR SPACE AND EXPENSE

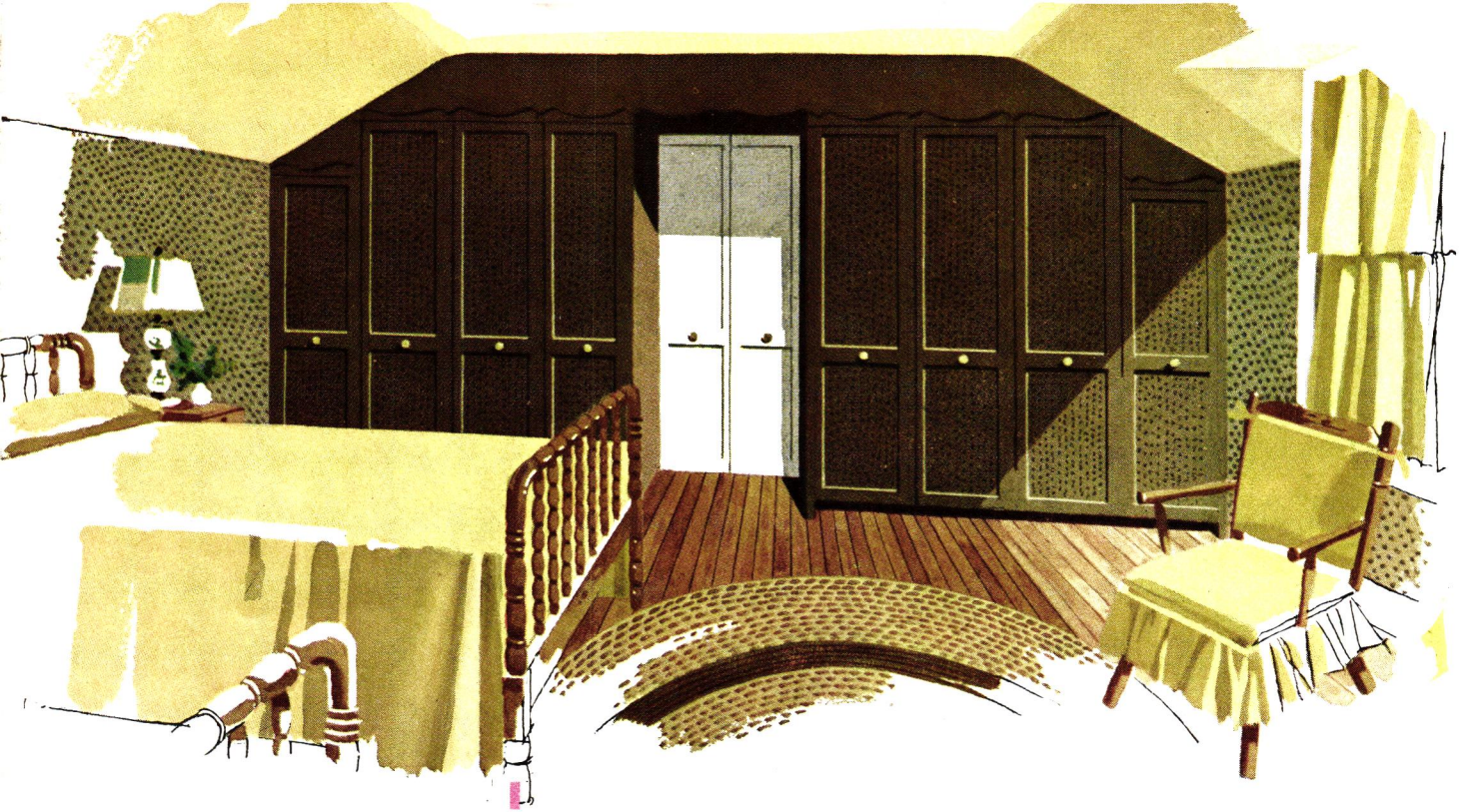
Lots of storage can be built into under-eave space, as shown here in attic hallway leading to child's room. Built-ins include bookshelves behind sliding doors, chest, and other storage cabinets. RED TOP Insulating Wool in walls and ceilings aids all-weather comfort.

BEFORE ↗

AFTER ↘



red
wall
ce.



Floor-to-ceiling storage wall saves room space, acts as sound barrier between bedroom and bath. Doors are paneled with USG Perforated Hardboard, a material that provides ventilation and takes paint beautifully.

Family activity room occupies shed dormer added to attic. Bulletin board of USG Perforated Hardboard stretches between dormer windows, and valance above conceals fluorescent tubes. Right section of cabinet allows toy storage while card tables go behind blackboard. Panel SHEETROCK Wallboard covers end wall. (Right) Hallway leading to activity room shows lineup of new storage closets. If you have closet problems, ask your U.S.G. building materials dealer for a free Handyman Plan No. 361 on Closet Remodeling.





Ceiling of BLENDTEX Plank inspired the warm color scheme of this handsome attic room. Cabinet units and shelves hold the lucky boy's prize possessions. Ceiling follows rafters to floor beyond cabinets, gaining valuable play space.

Dingy attic is transformed into spacious guest bedroom. Large picture window was added, with glass extending into peak of gable. RED TOP Insulating Wool was stapled between wall studs before nailing on predecorated Bleached Mahogany SHEETROCK wallboard. Ceiling is USG Insulating Twin-Tile stapled to furring strips. Perforated Hardboard conceals beam, doubles as indirect lighting fixture.

KEYS TO SUCCESS: careful planning and good materials

Converted attic corner becomes a nursery wonderland. Plaster over ROCKLATH plaster base gives smooth wall surface for gay wallpaper. Gardenia White of TEXOLITE DURAVAL paint, on ceiling and dormer recess, increases bright effect. Unfinished chests were combined with homemade shelves and painted to lend custom-made appearance.

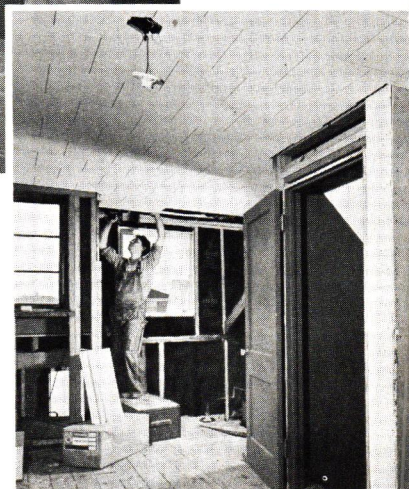




Whether you want more living space for your family, or hope to turn an unused attic into a rental apartment, you'll find ideas here! TEXOLITE CEMENTICO, the cement base paint available in ten colors, is ideal material for obtaining rich painted-brick effect like this. Draw curtains separate study (or dining) area from living-sleeping area. (Right) Workman staples USG Insulating Panel-Tile to joists. Finished ceiling has insulating value and needs no decorating.

FIRST NEEDS: INSULATION, AMPLE HEADROOM AND LIGHT...

Wooden panels form the knee wall in this room. Simple bar latches hold panels in place, and provide easy access to general storage area behind. Louvered doors of wardrobe closet are stocked by many lumber dealers.



How to save the expense and space required for furniture: build drawers into attic knee wall and you'll have easy-to-get-at storage space. Cleats on side serve as drawer guides.





Picture window opening has been cut to receive new window, and ceiling joists have been installed. Here, insulating wool is being stapled to studs, framing is in for new wall which will be covered with SHEETROCK wallboard.



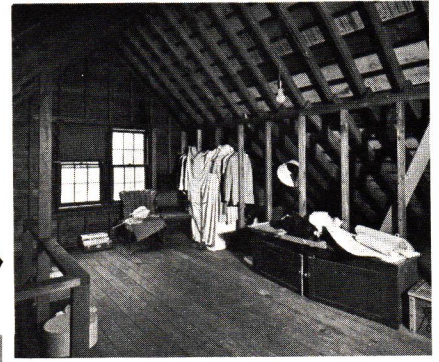
Stair well enclosure is both smart-looking and useful, as shelves built into it provide 48 running feet of space for books and gadgets. Small door beyond shelves opens to storage space. Open door leads to bath.

BEFORE... AFTER

FOUR VIEWS OF ONE FAMILY'S ATTIC REMODELING

A place for play as well as sleeping is now a reality in this remodeled attic area. The girls find their new room provides space for almost unlimited indoor activities. Built-in vanity serves as desk. Ceiling and side walls were smoothly finished with gypsum wallboard and PERF-A-TAPE Joint System. For help in organizing and executing any remodeling project, get a free Remodeler's Guide from the firm which supplied you with this folder.

Before remodeling, attic needed complete finishing. Typical faults were small windows, lack of insulation, rough flooring.



BEFORE →
AFTER
↓





Here's a room designed for homework, play, and sleep. Knee-wall cabinet, about 4 ft. high by 8 ft. long and 14 in. deep, is constructed of $\frac{3}{4}$ -in. plywood and 1-in. lumber with DURON Hardboard back and sliding doors. Bleached Mahogany and painted SHEETROCK gypsum wallboard are used on walls and ceiling.

