



idea file

FROM POPULAR HOME...  
THE BUSINESS OF FARMING

FOR

# CHILDREN'S Rooms



**Room for three girls** started as a drab unfinished attic of two-bedroom house. First remodeling step was framing for new partitions and ceiling. Next, RED TOP insulation was stapled between joists and studs. USG Perforated Hardboard was nailed to studs above beds, with SHEETROCK gypsum wallboard used for remainder of walls. QUIETONE acoustical tile ceiling absorbs noise of new room's happy tenants. New floor, built-in drawers, and bright colors add final touch.

published by



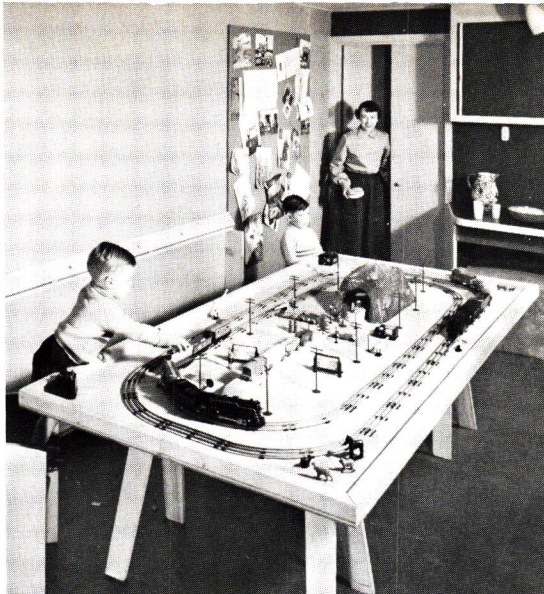
**UNITED STATES GYPSUM** *the greatest name in building*

Copyright 1957 by United States Gypsum Company, Publisher, 300 W. Adams St., Chicago 6, Ill. The following trademarks are owned and/or registered in the U. S. Patent Office by United States Gypsum Company, and are used in this folder to identify products manufactured by that company: USG (perforated hardboard, insulation board products), RED TOP (plaster, insulation), SHEETROCK (gypsum wallboard), QUIETONE (acoustical tile), DURON (hardboard).

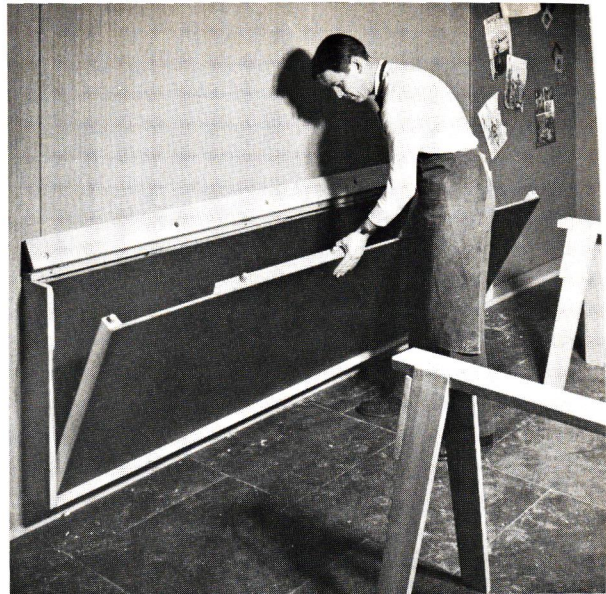




is a clear track when his pull-out train shelf  
when nap time comes, he merely slides the  
inets and pulls out his bed, which is below  
casters. Side glides and heavy duty hard-  
shelf.



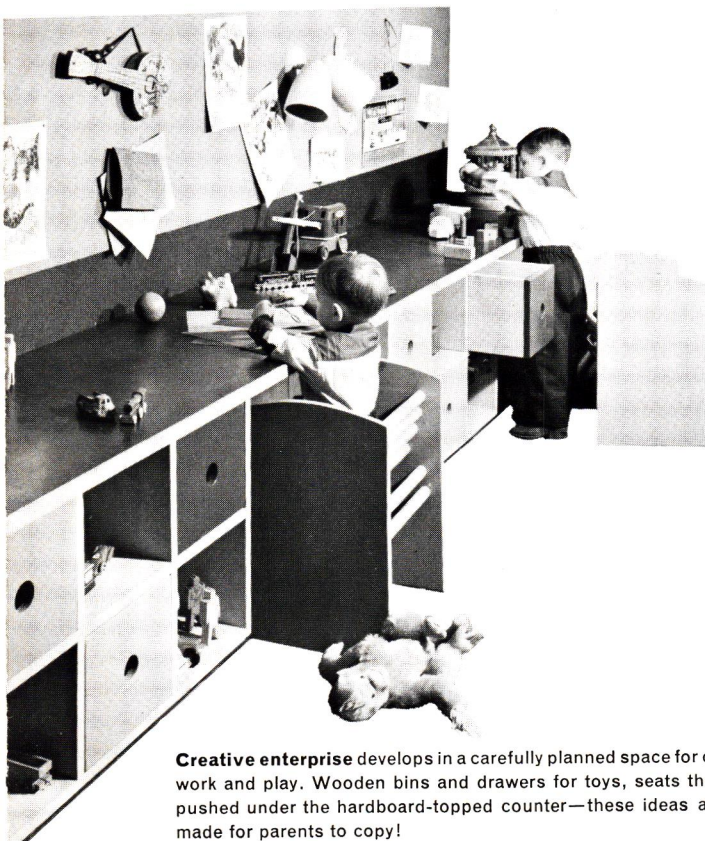
**Engineer No. 2** has a secret way to store his train platform. When it's up (left), platform with tacked-on tracks and accessories rest on sawhorses. When Dad puts it away (right), you see that two sections are joined by dowel pegs that permit quick dismantling for storage in wall rack with hinged top. Plywood surface is framed with 2 x 2 lumber.



## TORAGE... and HOBBIES

et for a cheerleader, preserve wardrobe  
the shelves a young lady needs. Lower  
undry hamper. This is simple carpentry,  
h with stock materials available from the  
gave you this Idea File. For how-to-build  
selection of free Handyman Plans.

**Engineer No. 3** has a smart dad  
who used an old bookcase as a fine  
frame for train table. Upper shelves  
were removed and a hinged train  
board added of  $\frac{3}{4}$ -in. plywood. Coat  
of green enamel on board, touch of  
scenic wallpaper in background add  
realism. Shelves below and at side  
take train equipment, games, toys.



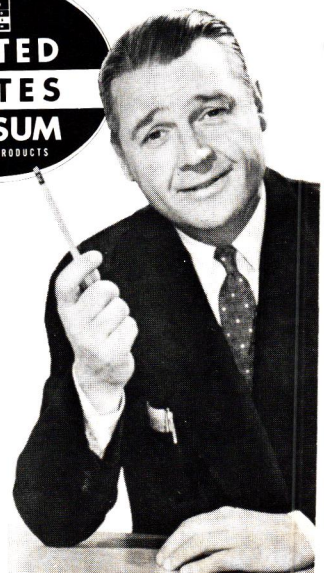
**Creative enterprise** develops in a carefully planned space for children's  
work and play. Wooden bins and drawers for toys, seats that can be  
pushed under the hardboard-topped counter—these ideas are ready-  
made for parents to copy!

a storage wall: make a sports gear closet.  
took one double-doored section, faced back  
ior with perforated hardboard, and added  
rd of width. Hardboard is mounted on 1x2  
ranch for Handy-Hooks.

## Want help all the way?



Giving you this idea File is  
only the beginning of the help-  
ful service we can render in  
your building or remodeling  
work. We have Free Handy-  
man Plans and the Remod-  
eler's Guide to help you or-  
ganize and do the job yourself, if you wish.  
We can recommend contractors and advise  
you on financing. For a new home, you're  
invited to look over our Family-Tested Homes  
plan book. We're **more** than a building ma-  
terial yard—we're Home Improvement Head-  
quarters! And for quality materials, we're  
proud to be associated with United States  
Gypsum—the greatest name in building.  
Come back and get some action!





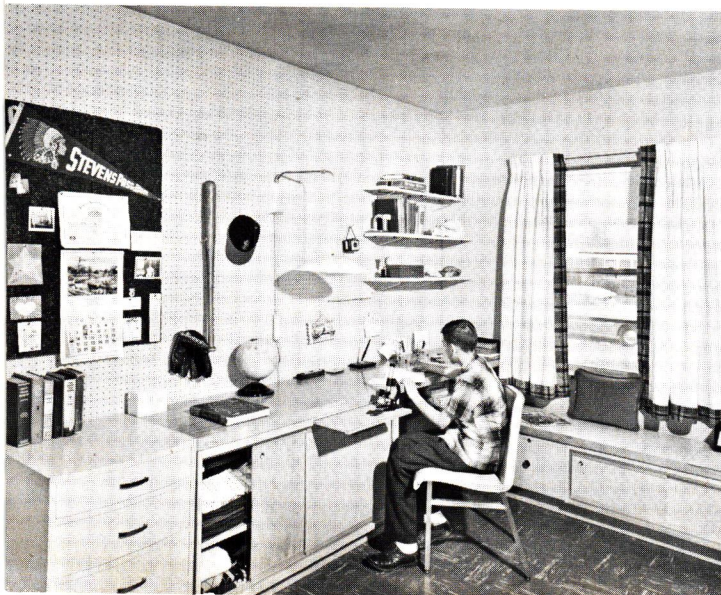


**most everything** a girl could want is incorporated in this charm-filled bedroom. Storage wall combines twin closets, drawers, shelf recess and flush light fixture. Drop-front desk, that also serves as vanity, closes up when not in use. Louvered doors can be purchased ready-made, and other built-in units are easily built from stock materials.

**Manager's delight** is this attractive unit built around a window in bedroom. Shelves for books and mementos can be made of stock lumber. Convenient corner desk tapers at an angle to give adequate knee room. Pin-up board at right of desk is a piece of USG Insulation Board framed and painted. Base of chest is recessed for convenience.



**all space goes to work** here! Cabinets with sliding doors hold clothing and include a pull-out shelf. Low cabinet under window is for general storage, includes compartment with lock and key for special treasures. Top of lower unit doubles as window seat. Wall shelves are supported by hooks in perforated hardboard.



**Here's how to fit out** a closet for a 3-year-old, later to be adjusted to keep up with changing needs. Hanger rod will be raised for larger clothes. Built-in sliding drawers—easy to open with one hand—eliminate the need for a chest and allow more play space in the room.



**In a double closet** space but build in section houses laundry. Easy to accomplish helpful dealer who gives directions, see his



**What to do with** This lad's parents of door and interior shelves in one-thick cleats to give clear

**S**

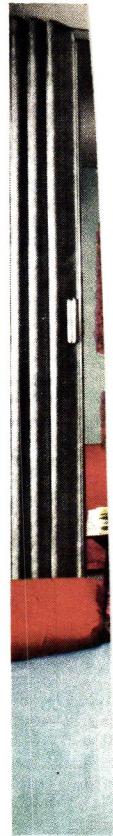




**Flanking entrance to room at left** are bookshelves recessed into perforated hardboard panels which form upper part of wall surface. Through doorway is stair enclosure—a dramatic, but inexpensive, combination of wood louvers and corrugated plastic. Painted pink on one side and left natural on the other, the louvers block view of attic, but let light into hallway.



**Bedroom of bright ideas** has one wall decorated with colorful painted panels, a chalk board, pin-up board and section of perforated hardboard. Toy bin stores beneath bed, rolls out on casters at playtime. Bins such as this are easily constructed of  $\frac{3}{4}$ -inch plywood. Soffit over bed conceals indirect lighting fixtures. Hinged baffles below windows give extra ventilation.



**Wide-open** high enough lumber, plywood

## MATCH THE ROOM TO THE with easily built features for

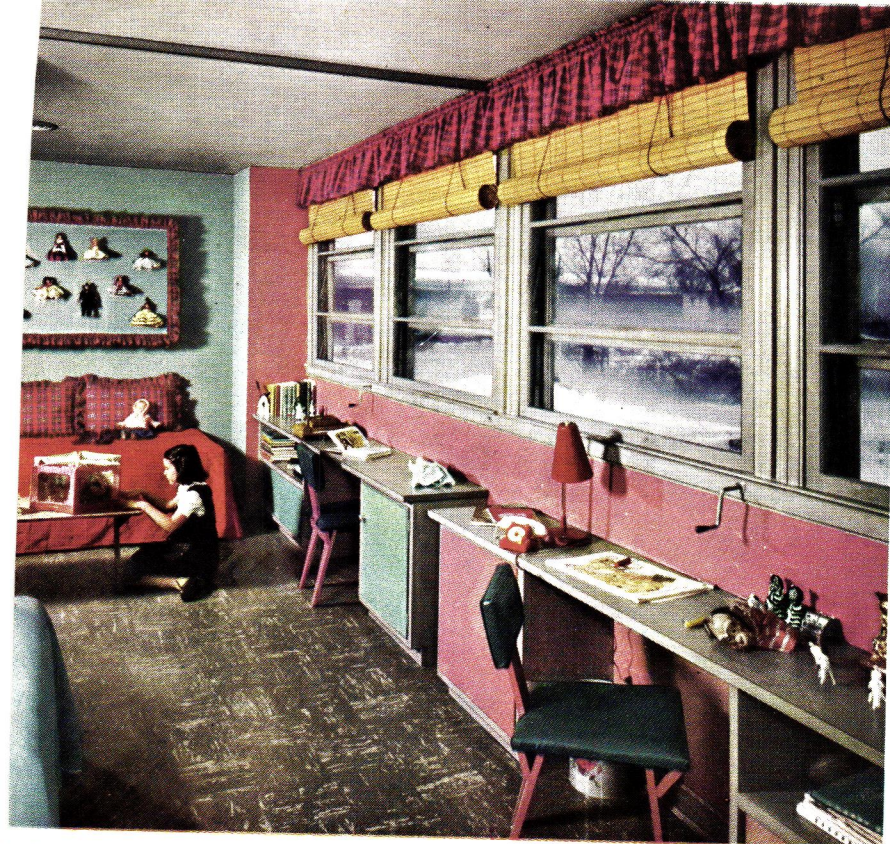
**Charming nursery** combines painted walls and ceiling of RED TOP Plaster with the warmth of a wood storage wall. Closets and chest built out from wall around window contain 130 cu. ft. of storage space in exchange for 2 ft. borrowed from length of bedroom. Louvered closet doors such as these aid ventilation and are readily available from most lumber dealers.



**Here's how to turn a blank wall** into a comprehensive storage unit. Cabinets, drawers, every inch of available space. Radiator enclosure (left) consists of metal grill attached to wall, below window, makes sturdy window seat. As the child grows, eventually hobbies and







lyroom becomes two sleeping areas by use of folding door which slides in ceiling track. Windows are  
child-size furniture can fit underneath. Desk and storage units of this type are easy to build from  
d and DURON Hardboard. Walls and ceiling of RED TOP plaster welcome any decoration.



Elegant but useful is this Junior Miss room. Simple shelves stretch deep enough for books but shallow enough so windows are within reach. Where a room is large enough (this one is 14x13), black makes

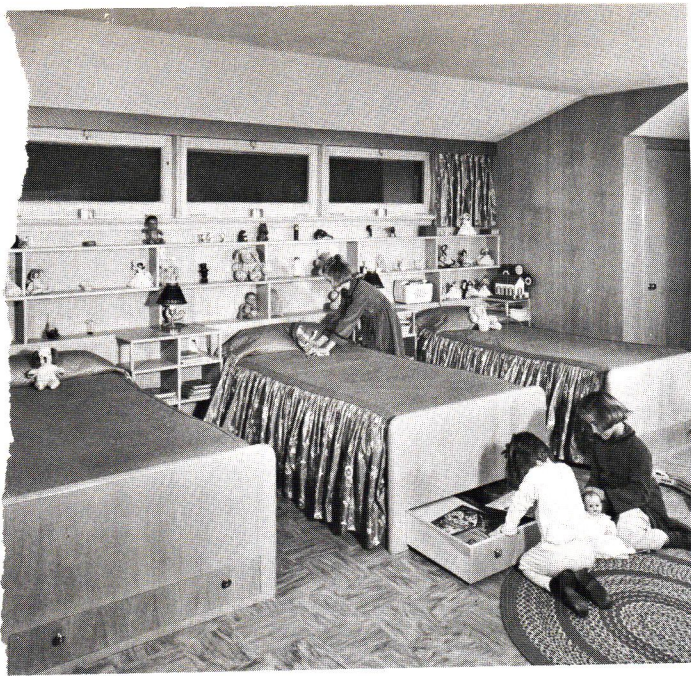
## CHILD any age

and stock shelving make use of  
wood frame. Top of double cabinet  
books will fill the display shelves.



A studious young man lives here—room is well equipped with floor-to-ceiling chest and bookcase, low window, and a man-size desk with tilt-top drawing board. Note that wooden desk has a lower file drawer—orderly habits at an early age. Drawer section of desk has a recessed base for toe space.



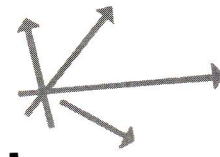


**It's the dormitory idea** for three girls and their possessions. Partitioned bookshelves form continuous headboard. Cleverly designed beds were made at home, big drawers for toy storage. Matching curtains and bedspreads offer pleasing contrast with plain ceiling of SHEETROCK gypsum wallboard.

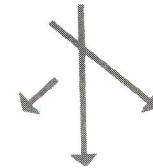


**Queen-size vanity** is the pride and joy of its young owner. Just-right height allows it to do double duty as a study center, too. Shelving lumber did all of this, including scalloped valance which frames the view. Note how curtains were hung high on wall to improve proportion of window wall. Ruffles are tacked to edge of vanity shelf.

## SPARKLING IDEAS FOR GIRLS...



## ...PRACTICAL IDEAS FOR BOYS



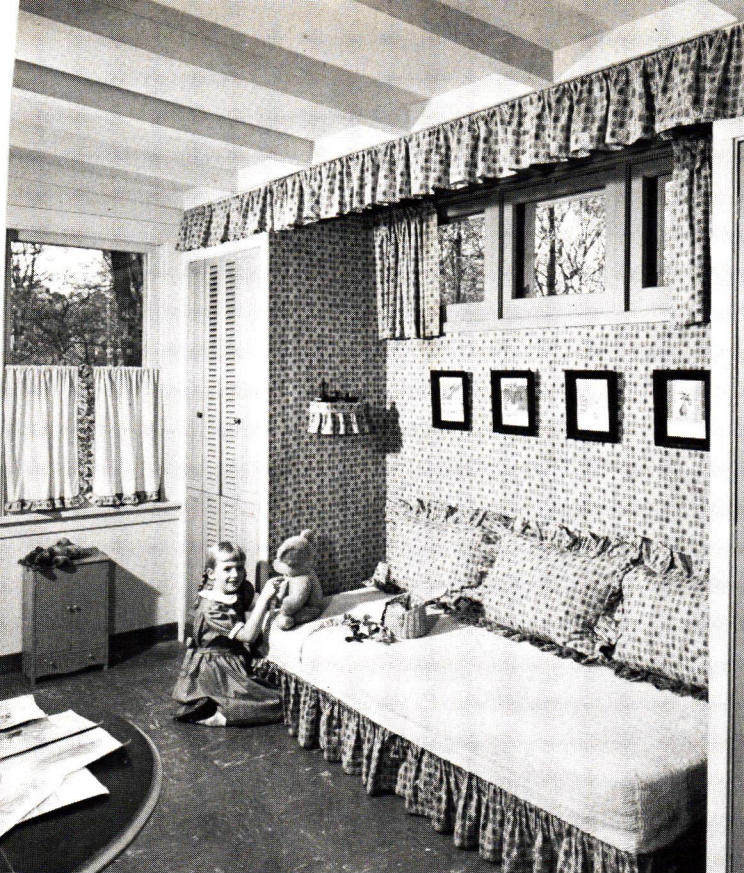
**How to share a room** between two boys, ages 10 and 3? This family lined wall with shelves, provided indirect lighting at top, and built in desk over concealed radiator. Each headboard has a hinged door that opens into storage for bolster and bedding. Bold color elements are offset by a white-painted plaster ceiling.



**A tuck-away table** quickly converts to an L-shaped desk of the "executive" type. Made from standard flush doors, lower table can be moved out into room, stores away under higher table attached to wall. Wall panel of USG Perforated Hardboard takes care of display and exhibit requirements.



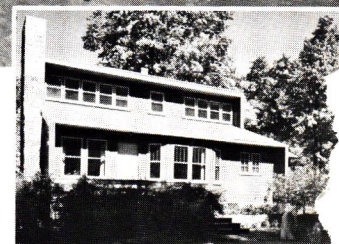




**Cheery room** for a very young lady is in new second story that also includes brother's room shown at right. Closets are built out into the room, providing a niche for the single bed. At right is clothes closet; at opposite end are drawers and shelves behind louvered doors. Note location of high windows in one wall, and use of matching fabric and wallpaper.

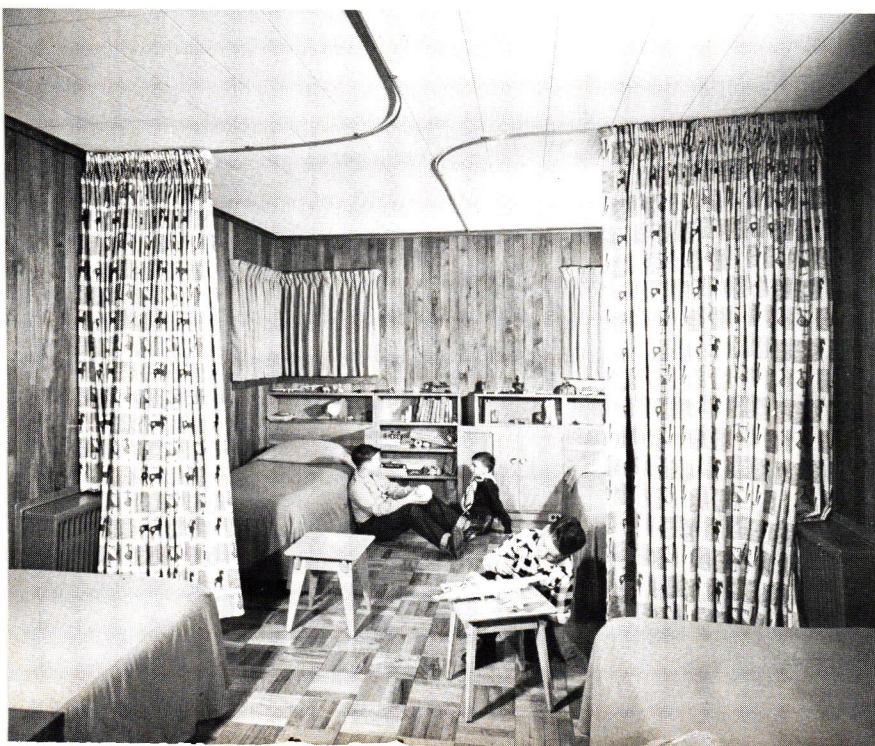


**Home base** for model airplanes is boy's room in new addition, shown also in exterior view at right. Windows provide plenty of light, leave ample wall space for furniture. Built-in cabinets have plywood doors sliding in floor track.



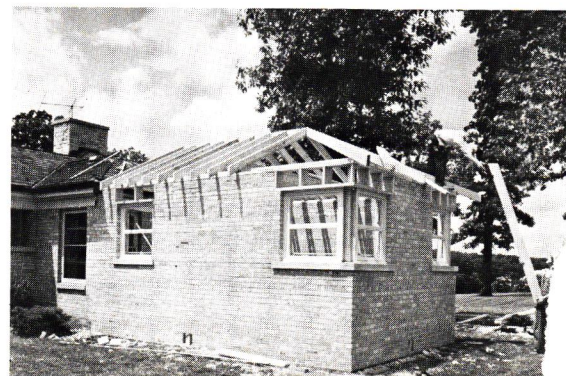
## TWO WAYS TO ADD SPACE...

### upstairs or downstairs grow-up rooms



**Another way to add a room** is by a "dormitory" addition—providing privacy for three boys plus an overnight guest. Floor-to-ceiling draperies travel on curved rods attached to ceiling. To keep noise under control, ceiling is surfaced with QUIETONE acoustical tile. Simple bookcases and cabinets line end wall.

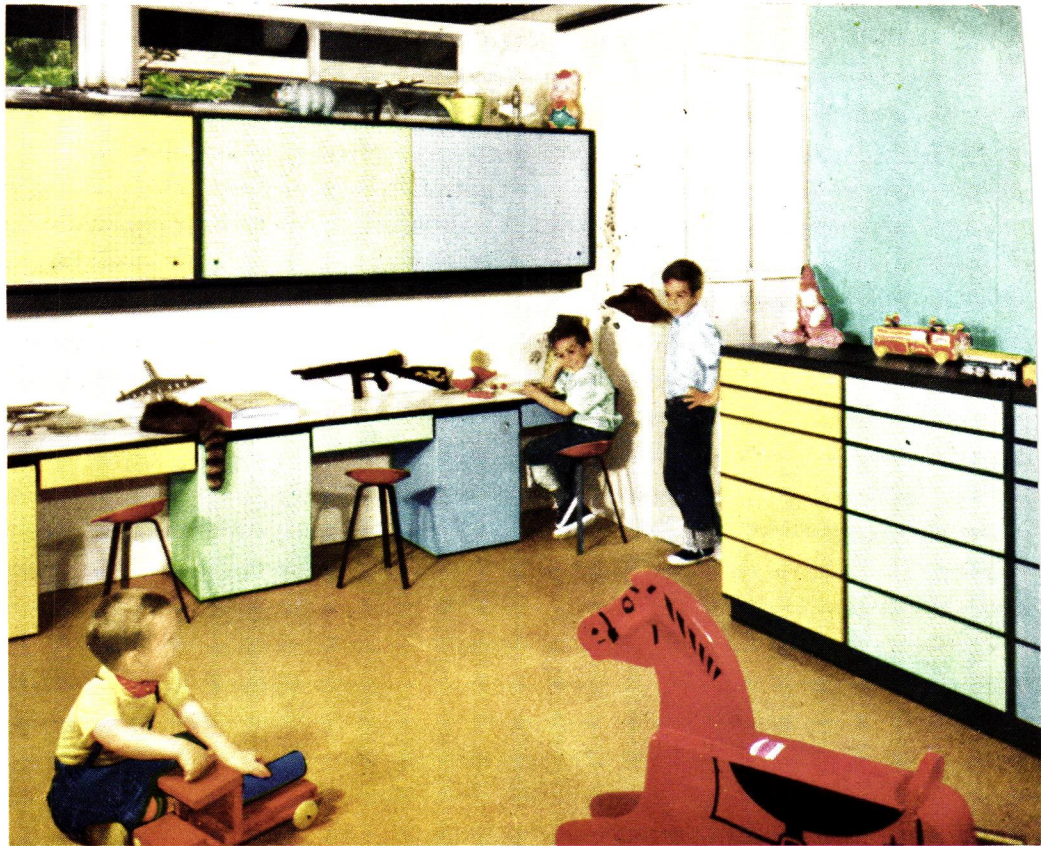
**Addition** for 12x18-foot dormitory room continues masonry and roof line of original house. Here, roof rafters go into place. Only changes in existing house were to close in windows, cut doorway.





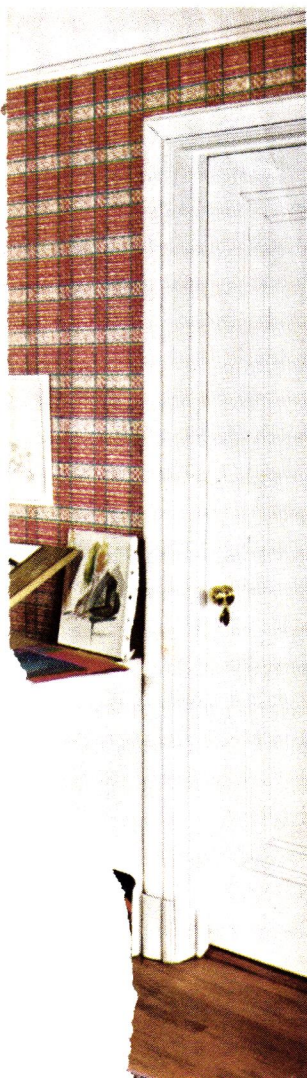


...v windows and around corner—just  
...er cabinet has extra depth for rec-  
...ntrast with soft pastel pink.



**Rugged and ready** for three boys, ages 3, 5 and 8, is this dormitory room added to rear of house. Each has his own bed, chest, cabinet and desk, all personalized in matching colors. Wall cabinets and desk assembly are constructed of  $\frac{3}{4}$ -inch plywood with sliding doors of USG Perforated Hardboard. Toy bins beneath desk surface roll out on casters.

...elves under  
...ay to teach



**Business of growing up** requires a desk like dad's and lots of storage space for important papers and gadgets. Desk here, of birch veneer  $\frac{3}{4}$ -inch plywood, was attached to wall for easy cleaning below. Hardboard trays slide out for a quick inventory of prized items. Old walls in this remodeled room were covered with fire-resistant, easy-to-apply SHEETROCK wallboard in knotty pine pattern. Old ceiling was quickly resurfaced with USG Insulating Twin-Tile.



WE'RE MORE THAN  
A MATERIAL YARD—  
WE'RE YOUR LOCAL

