

January-February 1958

# Popular Home

A SERVICE OF YOUR HOME IMPROVEMENT HEADQUARTERS



**24 PAGES**

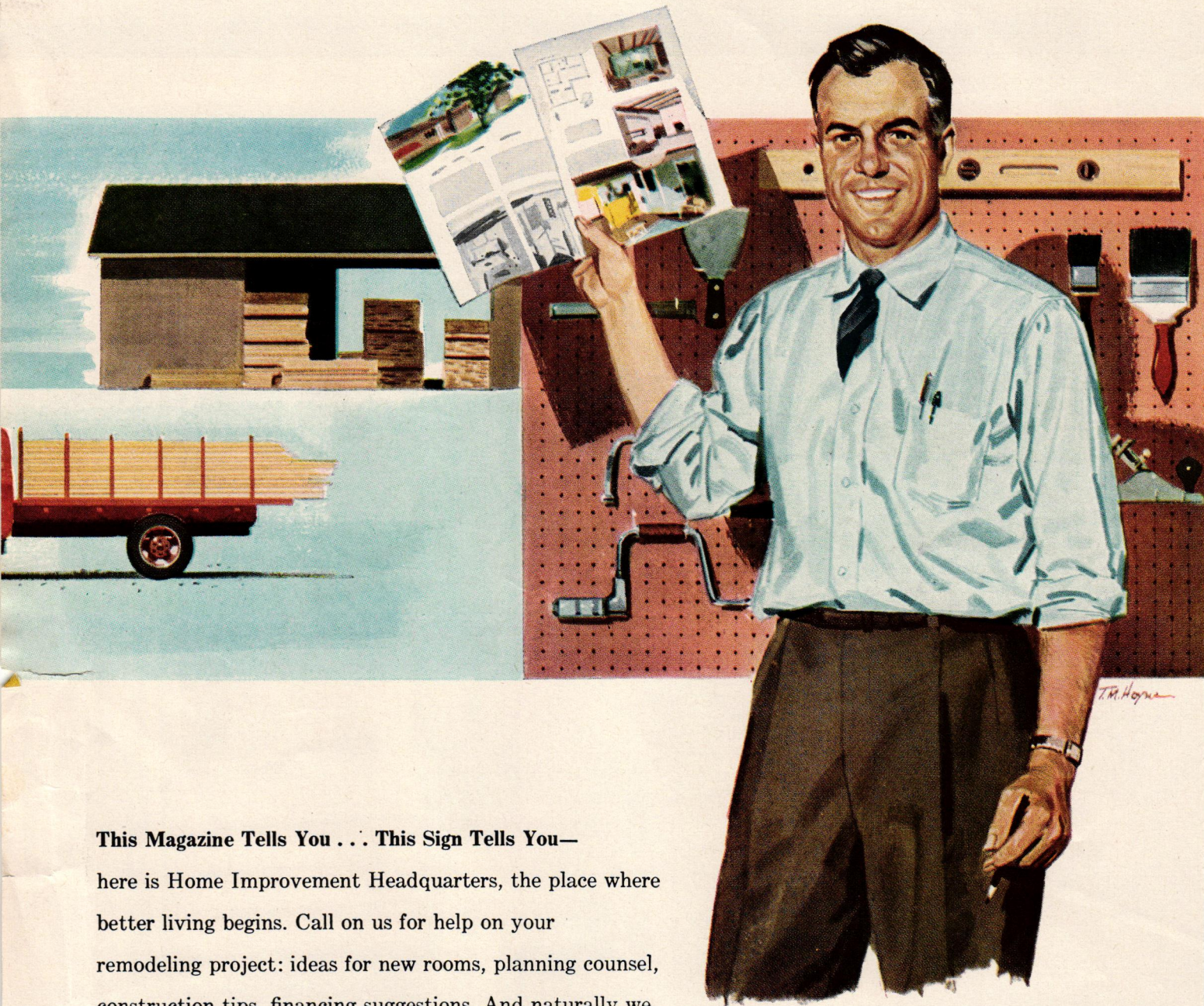
*of smart new ideas for modernizing  
your home this year*

**Eugene Planing Mill**

306 Laurence Street



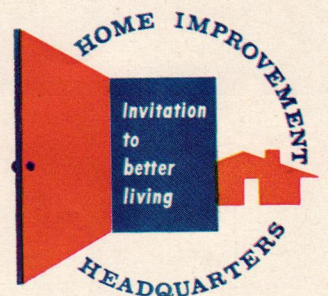
# Here's the Place to Come for Help on **Any Home Improvement**



## **This Magazine Tells You . . . This Sign Tells You—**

here is Home Improvement Headquarters, the place where better living begins. Call on us for help on your remodeling project: ideas for new rooms, planning counsel, construction tips, financing suggestions. And naturally we can furnish you with the latest and finest materials to make your project easier, more economical, more satisfying through the years. Visit our Home Improvement Headquarters today!

## **Come in . . . Our Name is On the Cover**



POPULAR HOME Magazine, January-February, 1958, Vol. 15, No. 1. Copyright 1958 by United States Gypsum Company, Publisher, 300 W. Adams St., Chicago 6, Ill. Six issues a year come to you through courtesy of the firm named on covers of this issue.

ON THE COVER: HOME OF MR. & MRS. E. D. ROGERS, JR., MINNEAPOLIS  
DESIGNED BY HUMPHREY & HARDENBERGH  
PHOTOGRAPHY: HEDRICH-BLESSING



**N**O ONE has yet succeeded in predicting the future with 100% accuracy. But by studying the opinions of men best qualified to express an opinion, you can see a fairly clear forecast emerge.

This is what POPULAR HOME has done. We have viewed, reviewed, interviewed—and this is the prospective building outlook for 1958 in terms of the effect it can have on your building and remodeling plans:

**Building costs.** At no time in the next ten years are building costs likely to be as low as they are right now. The reason: there is a lull in the rise of new family formations, the result of fewer children being born during the depression years of the '30s. By 1960 family formation figures will climb rapidly, and more and more families will be competing for materials and the services of builders.

**Building materials** are in good supply today almost everywhere. While demand is not as great as it was during the early 1950s, it is steady—an indication that prices are likely to remain stable. But the increased demand which is bound to come in the next few years will mean greater use of materials; and while major shortages are not expected, they could occur, carrying costs upward.

**The labor supply** is good, both in quantity and quality. Today's skilled craftsmen can give you good value for your building dollar. Quality tends to drop during a building boom.

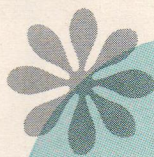
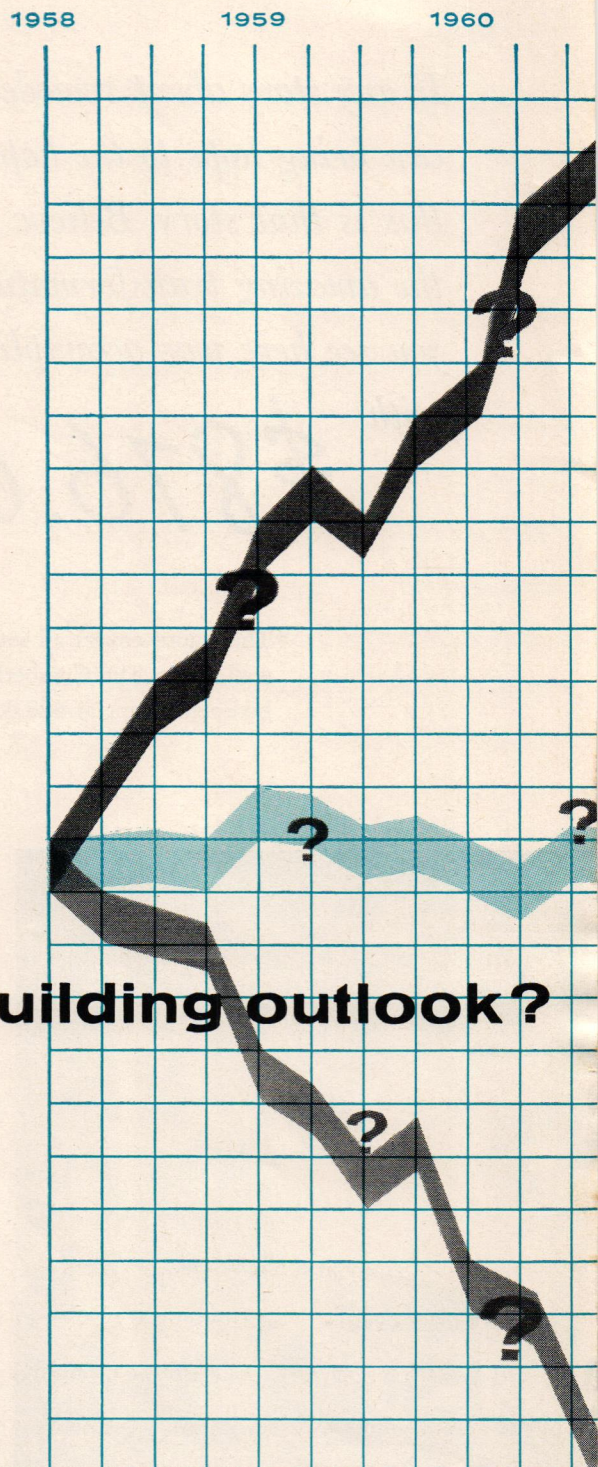
**Money** costs more and more to borrow. VA- and FHA-insured loans have been slowly but steadily drying up.

Money at less than 5½ percent is hard to find, and though loans may be easier to get in the future, the chances are slight that their cost will go down.

**What does this mean to you?** If you have any idea of building a new house within the next three years, now is the time to get started. Each year of delay, according to predictions, will cost you more for the same house. . . . If you have any idea of remodeling or adding to your present home, do it now. Prices of older houses are steady, and home improvement is your best protection for your investment. Builders are frequently looking for small jobs to keep their crews busy between larger jobs, and competition keeps prices in line. The next building boom will change all that.

So . . . good luck, and good building.

## What's the building outlook?



**Popular Home** January-February • Issue 1 • 1958

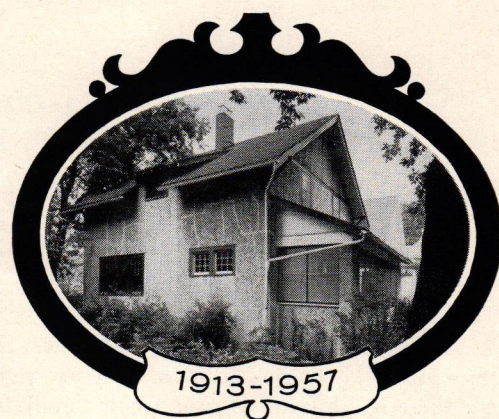
*Highlights  
of this  
Issue*

\$876 . . . and persistence . . . . .page 4  
Family-tested Feature Houses . . . .page 14  
They brought their patio indoors . .page 18  
The Fixit Forum . . . . .page 21

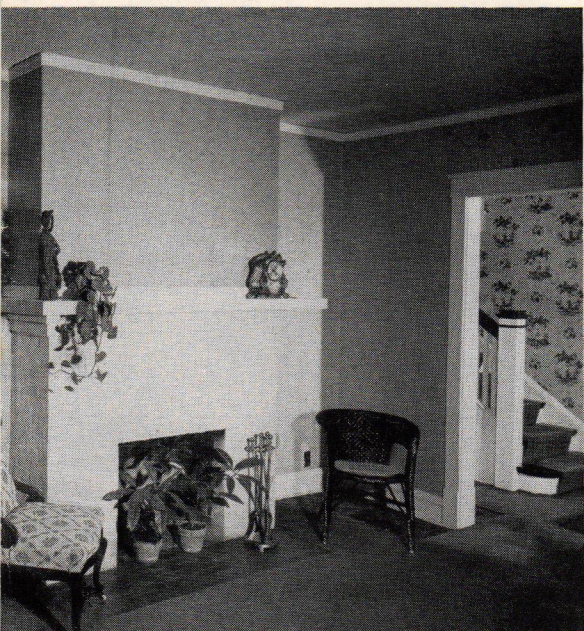


*If any story about remodeling  
can bring hope to the hopeless,  
this is that story. Believe it or not,  
the amazing transformation  
you see here was accomplished  
with*

*\$876.00... and persistence*



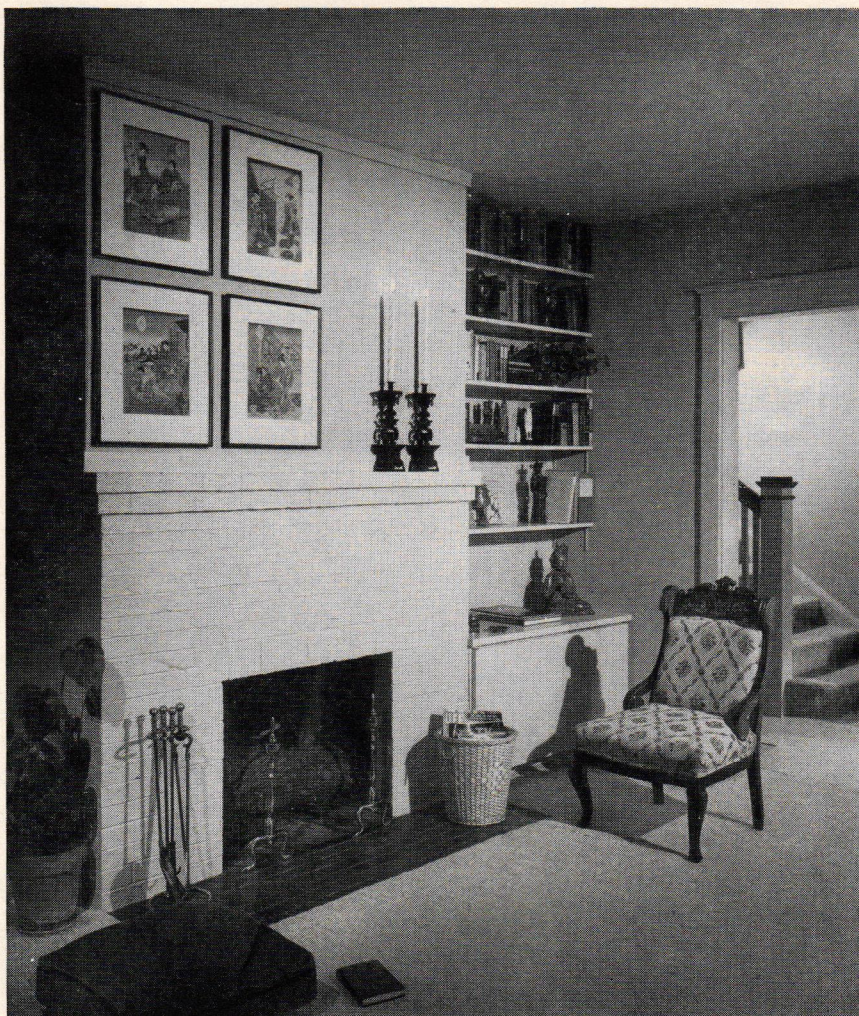
\*This figure covers all interior improvements—paint, carpenter's fee, building materials, floor tile and wall lights. The Cumberlands budgeted for furnishings separately; included were a pair of handsome bedroom lamps at \$28.00 and their one luxury, beige carpeting. Isn't anything private any more?



BEFORE

AFTER

**Where to keep your things** is a question not answered by "boxes in the basement." So the Cumberlands used dead corner space for a record cabinet that has doors with magnetic catches. Fastened to wall above are metal strips with adjustable clips that hold stock shelving. Other improvements included removing a mantel which jutted into room, stripping off old paper, repairing cracks, painting walls with TEXOLITE DURAVAL Safari Beige, the ceiling a light-reflecting Gardenia White.





by Cynthia Montgomery

**T**HE AUDIENCE: You.

THE TIME: 8 months in the lives of the Cumberlands.

THE PLACE: A plain jane house located on a tree-shaded street in a good neighborhood within walking distance of transportation, shopping district, school and churches.

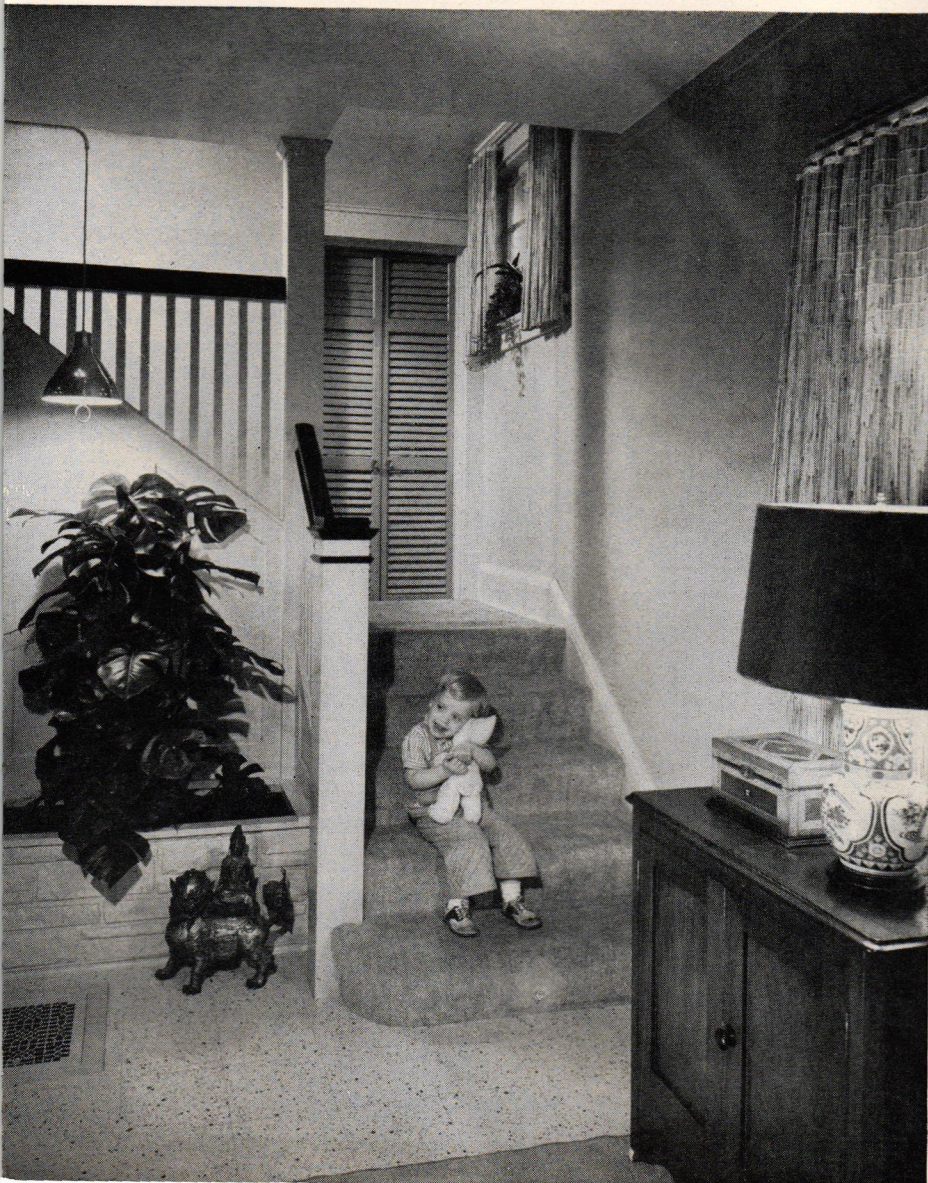
THE CAST: Betsy, an attractive young wife.  
Her husband, Bob, just transferred to a large city.  
And two-year-old Jane (below) who isn't plain at all.

THE IDEAS: unlimited. Many of those on the pages that follow were within the realm of do-it-yourself.

THE MONEY: limited. But see what the Cumberlands did with \$876.00 to an old, structurally sound house that needed repair and decoration of walls, ceilings, trim and floors. The greatest lack was storage space located in convenient, accessible places.



BEFORE



AFTER

A stairway is an enchanting place for a little girl brought up in an apartment. Visitors have the same opinion of the entrance hall. Bob's and Betsy's betterments included painting, refinishing an old chest, and covering the battered floor with DUNON hardboard as underlayment for light beige vinyl tile. New louvered doors are painted Japanese Blue. Bob faced the planter with stone-patterned molded plastic, hung a light above to fool the plants into steady growth.

More  
on the  
following  
pages





# *\$876.00... and help from many sources*



**The lady has a problem**, created by too little space. Cure came about when the Cumberlands built a storage unit for non-kitchen items in adjoining dining room. How about looking around your home for walls where storage units will fit? Don't overlook children's rooms and wide halls.

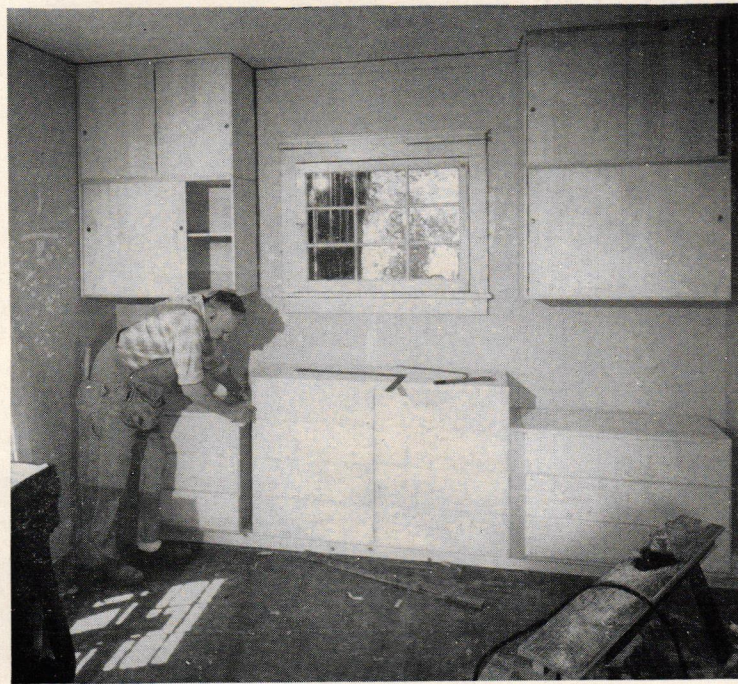
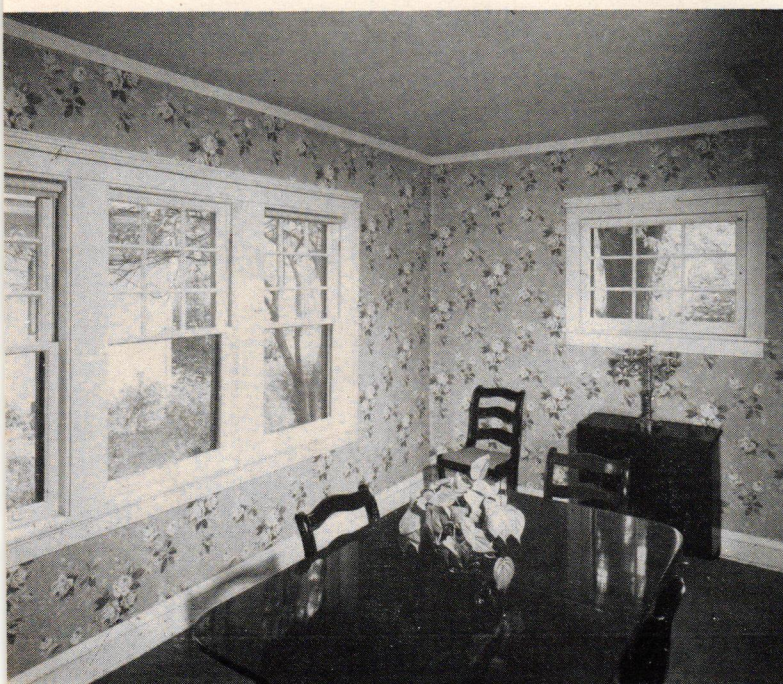
**T**HE DAY the Cumberlands took inventory of their dishes and glassware (and wedding presents they'd never been able to use because of storage scarcity in previous dwellings) was the day the dining room storage wall became a realistic plan. "Why not," they thought, "use ready-made chests and cabinets as a starter for a built-in? Mr. Engdahl (their carpenter) can build in the rest of it." The Cumberlands' solution suits their needs perfectly; you may prefer a unit built on the job.

A little knowledge is a dangerous thing, and you don't take out your own tonsils. The Cumberlands checked their ideas with decorator Lucille Knoche who made more suggestions. For selection of building materials and how-to-go-about-it advice, they went to their local lumber dealer whose name they see in **POPULAR HOME**.

Evenings and weekends found Bob and Betsy busily stripping off wallpaper, patching walls and ceiling, cutting down draperies. They breathed a sigh of satisfaction when the paint rollers were rinsed for the last time.

**"All walls and no storage"** describes the old dining room (below). To change that, chests were placed below and at sides of the off-center window, and set on a 3-in. high wood

frame indented for toe space (below, right). Upper cabinets are screwed to ceiling, to each other, and to wall studs. Ply-wood counter is edged with wood strip. The results: →







If pretty is as pretty does, then this room is beautiful. And it is. It's practical for every day and for parties, too. Wall color of TEXOLITE DURAVAL Safari Beige paint blends with sand tone of carpeting and curtains, contrasts spicily with cloth and candles in often changed hues. Below: 4 inches of extra space holds bottles above, trays below. Good idea, isn't it?

*More on next page*



*Phil Witkowski*

*"Remember now . . . when he shows you the improvements he's made, take notes!"*



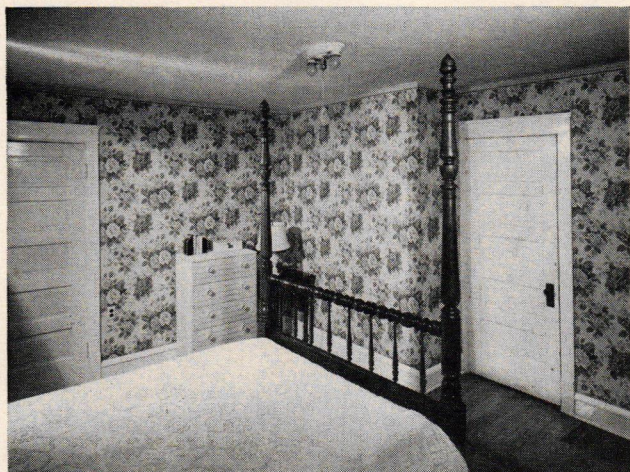
Now, skip upstairs to three light and airy bedrooms, one of them the full width of the house with two large walk-in closets. The builder of the Cumberlands' "new" house was aware that buyers want large bedroom closets (a good point to remember in improving your house). He knew that no female ever has enough closet space, frequently overlaps ("just for a while, dear") into her husband's domain.

Now, with His and Hers storage built-ins, the Cumberlands have ample put-away space—for the first time in

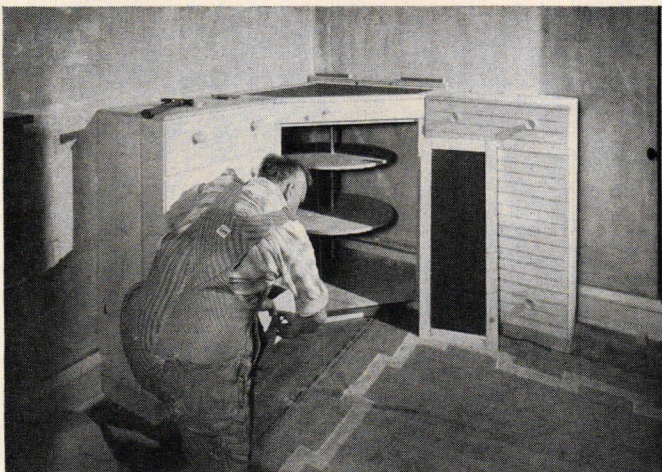
their five years of crowded bliss. Their bedroom is uncrowded because this wonderful storage lineup requires a strip of floor space only 15 inches deep.

Don't lose a moment in adding this kind of convenience in your own bedroom. Make a custom-built unit to fit, or combine simple stock materials with ready-built pieces like these. Kitchen-type units are usable, too, in creating handsome storage cabinets for other rooms. Your lumber dealer can supply the simple building materials required, and give you both advice and help.

BEFORE WE STARTED . . .



WORK IN PROGRESS . . .



. . . AND NOW IT'S LOADED!



"His" around-the-corner unit fills a blank corner (top left). Two new chests and a corner cabinet between are secured to wall studs. Kitchen-type "lazy susan" bought from lumber dealer (top, right) is used for shoes. Doors of USG Perforated Hardboard provide ventilation. Shallow top compartments with lift-up top (above) will hold the contents of Bob's pockets. It's what every man needs.



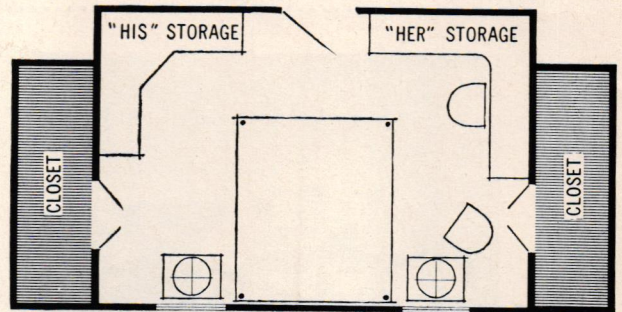
*\$876.00...  
and a dividend  
in storage*

*Good results don't just happen.*

*They come from wise planning, careful workmanship, materials and advice of high quality—the kind your lumber dealer will give you...*



*More on next page*



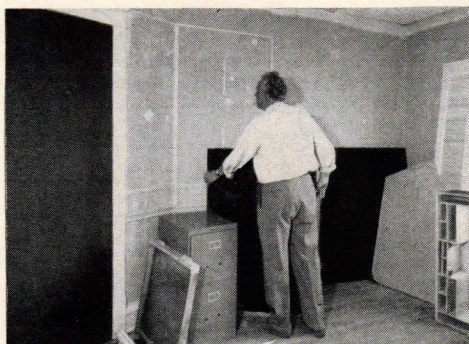
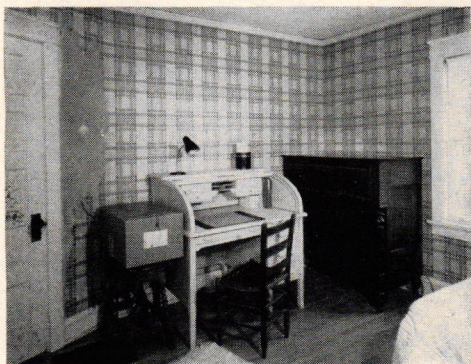
Plan shows how new storage units fit into room

**"Her" around-the-corner unit** (below) includes dressing table made by attaching white laminated plastic to plywood top and edging with a wood strip. Shuttered doors in a stock size were bought from their lumber dealer, then cut to fit.

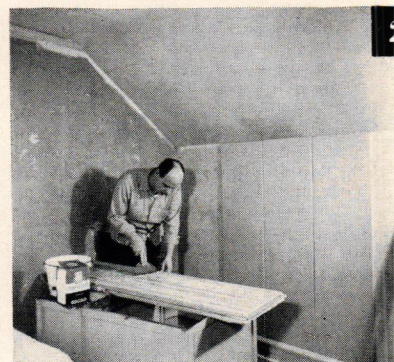
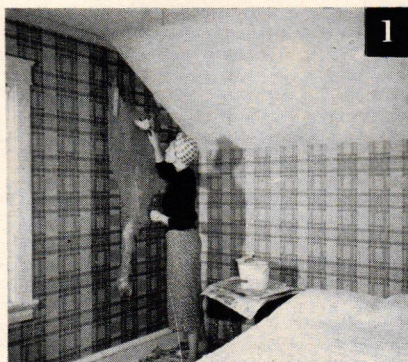
Color scheme was planned around a blue-green rug and blues in the flowered fabric, and emphasizes beauty of antique bed and chair. Betsy and Bob used TEXOLITE DURAVAL Blue Chiffon paint on woodwork, Gardenia White on ceiling, and for walls mixed equal parts of the two colors. After removing old stain from the floor, they applied orange shellac.







**Too much furniture** in too little space (top above) was corrected with a new desk (below). It's made from a plywood top, a leg, and a file cabinet combined with drawer compartment taken from the old roll-top desk. Hang-up board above desk is made of perforated hardboard, a ready-to-paint material that comes in 4x8-foot sheets. Shelves are supported on Handy-Hooks.



**Three steps to new wall beauty:** remove, resurface, refinish. (1) To remove wallpaper, soak with warm water from sponge, soften for ten minutes, remove with broad knife. Wash with clear water, using steel wool. Dry. (2) To resurface, apply Panel SHEETROCK, a gypsum wallboard 16 inches wide that requires no taping. Half-round molding at ceiling gives neat finish. (3) To refinish, apply paint. The freshness of spring, tranquillity of autumn are in this color scheme. Wall paint color: TEXOLITE DURAVAL Sunlight Yellow. Ceiling: Gardenia White that picks up yellow from walls.

*\$876.00...  
for cake and  
frosting, too*

**T**HE Cumberlands' study-guest room is ideal for people like Bob and Betsy who prefer to relax and entertain at home. Any bright man with a ramshackle room, a wife willing to work, and \$123.00 for materials and a carpenter can have a comfortable den like this.

The improvements?

- a new desk
- a hang-up board of USC Perforated Hardboard
- a "new" door, made by covering an old door with DURON Hardboard
- a wall of Panel SHEETROCK gypsum wallboard
- louvered doors to closet
- painted walls and ceiling

Throughout the house, the Cumberlands used existing furniture, restricted new decorating items to fabrics and downstairs carpeting. They depended on paint colors to supply the "frosting on the cake". Although the colors don't match from room to room, they are compatible. In fact, if you put together all colors in all rooms, you'd like the result. The Cumberlands do!

**Wish you could** do a job like this, but afraid to tackle it? Then ask your POPULAR HOME lumber dealer for Handyman Plan No. 381—Preparing to Remodel. It will help you get off to a flying start.

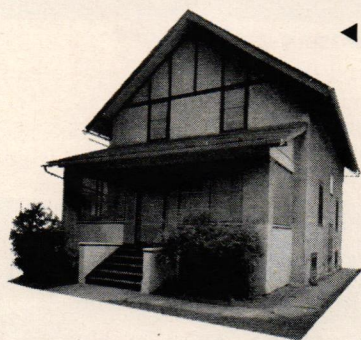




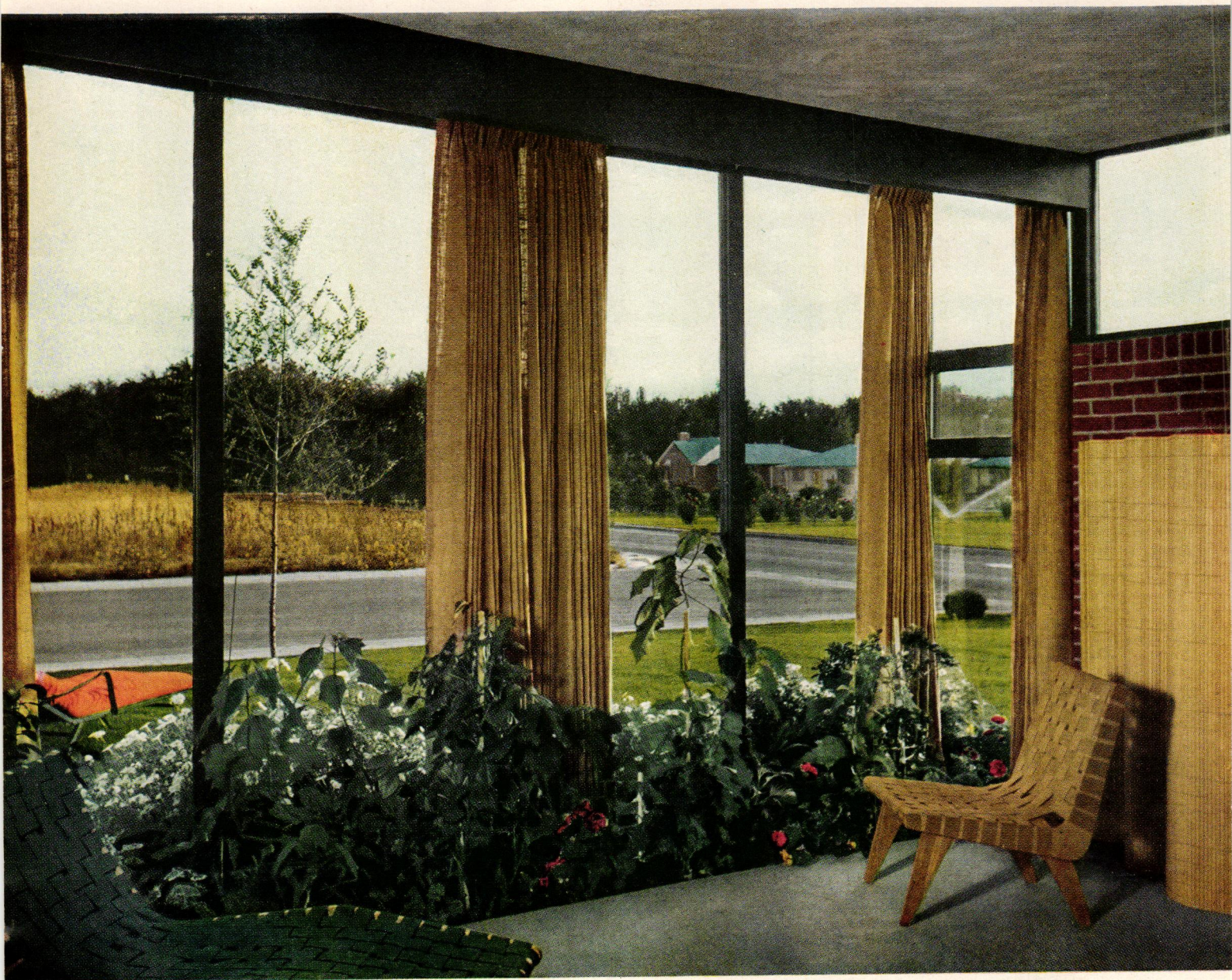
PHOTOGRAPHY: HEDRICH-BLESSING • WALL LIGHTS: MOE LIGHT • UNFINISHED CHESTS & CABINETS: HARRIS PINE MILLS

Our story ends on a rosy note. It's the color of the Cumberlands' house. Passersby stop to admire the Antique Coral of TEXOLITE vinyl exterior paint applied professionally (below), the shutters which were hand-me-downs from a friend, the newly-screened porch, and the wood planters Bob made. But, unlike the passerby, *you* know the house is just as attractive inside as it is outside.

◀ 1957-1958 ▶







HOME OF MR. & MRS. M. R. STONE, DENVER

- A** For tying indoors and outdoors together, set planter into the floor.  
**B** Planter atop bookshelves channels traffic away from living room.



- C** Live, delicate screen of vines grows up taut ropes in 1x6 frame, filters view between rooms.



HOME OF MR. & MRS. JACK PILGRIM, ATLANTA  
 EDITORIAL SOURCE: SUSAN JONES MEDLOCK

HOME OF MRS. E. F. NOE, DENVER



# All About Planters

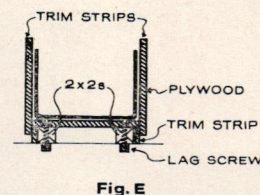
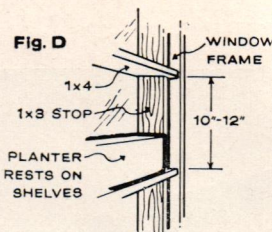
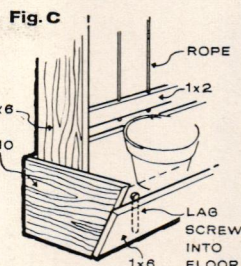
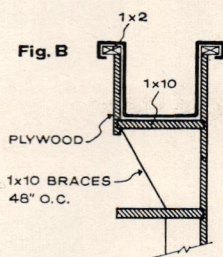
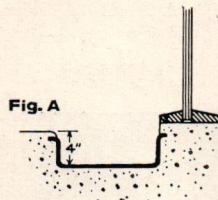
*Colorful and decorative,  
they can serve you in many ways*

A BIT of greenery and growing color can do wonders to brighten a room. Flowers and plants look their best grouped, and there's no better place to group them than in a planter.

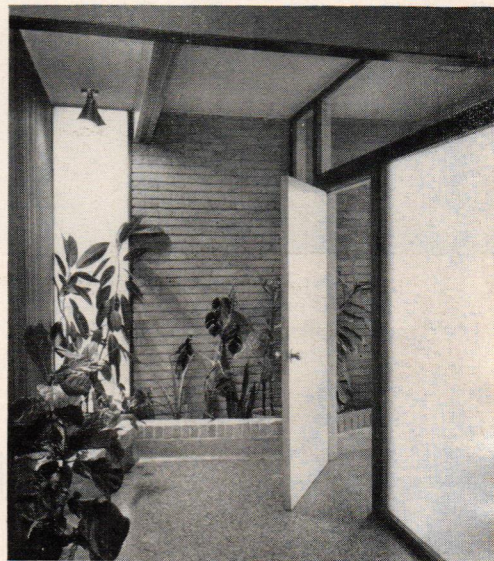
Planters fit logically in three places: against a blank wall that needs livening; as a divider or screen between areas; and in front of glass, where they make a room seem part of outdoors in summer and give promise of warmer days against the white, gray and brown of winter.

In an existing house, planters may be anchored to the floor (Fig. E), built into a window frame (Fig. D), or built out from a wall (Figs. B, C and F). In a new house you can also set a planter into a floor (Figs. A and G).

Sketches above show how to build your own planter. Be sure to use sturdy materials for a frame (planters are heavy when watered) and a waterproof material such as copper for a box.



**G** In warm climates continue an outdoor planter into the entrance hall.



HOME OF MR. & MRS. CLIFFORD H. CADIS,  
NEW ORLEANS

**D** Tier of shelf planters limits the view in without cutting off light or spoiling view out.



HOME OF MR. & MRS. THOMAS P.  
NELLIGAN, HIGHLAND PARK, ILL.

**E** Long, full planter delineates hall, adds lift, color and texture to an otherwise blank wall. Drapery creates needed privacy, minimizes danger of someone stumbling over planter.



HOME OF MR. & MRS. WARREN REYNOLDS, MINNEAPOLIS

**F** Light box helps African violets grow, is suspended from ceiling on 1-in. dowels up which ivy climbs.



HOME OF MR. & MRS. WILLIAM POLAND,  
WINTERSSET, IOWA





**Color here lends the interest** created in expensive houses by built-ins and novelties. Floor-to-ceiling louvered doors close off all closets, contrast with smoothness of SHEETROCK gypsum wallboard on walls. Mobile is home-made of straws and string.



**Basement-on-a-wall** is this gathering of cabinets along one wall of utility space. Colors denote use: for instance, salmon on drawer, doors and drop-down desks indicates childrens' domain. This storage space remains when the house is built with a basement.

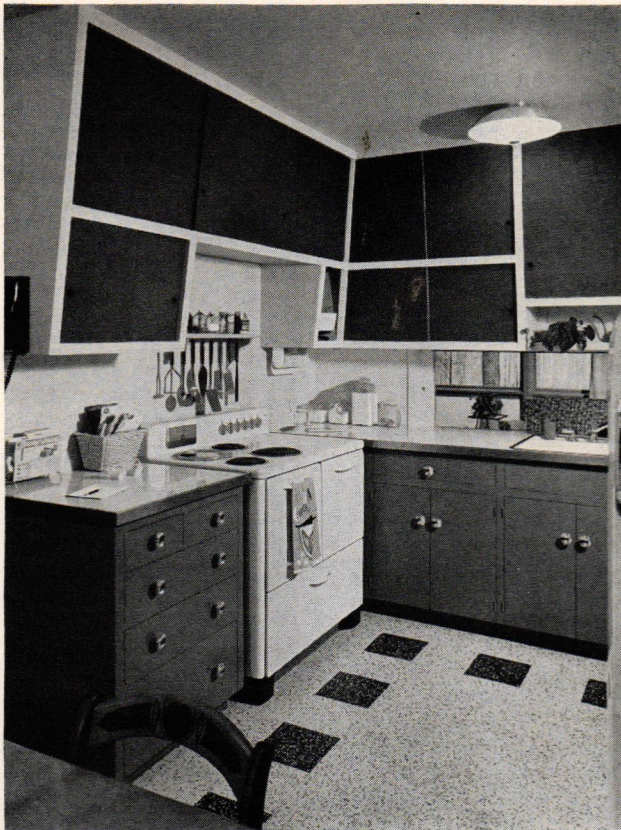
## POPULAR HOME'S **House that cuts costs .**

**This living area is lived in**, not just looked at. Most of the time living room and family room (background) are open to each other, with the family room the children's headquarters. A fold-

ing door puts all their clutter out of sight when company comes. Note how change of wall color increases visual depth of rooms. Storage space at right is open to both kitchen and dining area.







**Compact, storage-filled kitchen** is center of the house and center of activity, including most meals. Cabinets with sliding doors of DURON Hardboard have angled faces so upper shelves are easier to reach. Pass-through (right) opens in dining area.

**I**F YOU use second-rate materials, squeeze your space, eliminate all the frills, and limit your vision to the contents of your wallet, you can build an inexpensive house. But you, your family, and neighbors will soon be sorry that you cut corners.

For you can build an economical house without building a cheap one—and without cutting corners. The proof is POPULAR HOME's House that Cuts Costs. Designed by Burt V. Stevens, A.I.A., for Mr. & Mrs. Edward Wolf, Jr., of Silver Lake, Ohio, it was a "first" house. With a growing family offsetting a growing income, economy was important, and was achieved by:

- A clean-cut floor plan. Rooms are spacious, but simply linked together to keep erection costs low.
- A simple gable roof. Although a rectangular plan is the most economical, it frequently means a dull exterior. Here the garage projection makes the exterior interesting, yet the roof has no extra ridges and valleys to increase costs.
- Economical, but first-class materials. Architect Stevens in all cases chose materials first on the basis of the job to be done, next on the basis of cost.
- Eliminating basement space. Laundry equipment, utilities and a wall of storage fulfill most basement functions. Garage is rainy-day play area.

If you are interested in building the House that Cuts Costs, with or without a basement, visit your POPULAR HOME supplier. He will be glad to order low-cost building blueprints for you—Plan No. PH 15-1A (without basement) or PH 15-1B (with basement). A fine home is yours from either plan.

*More on next page*

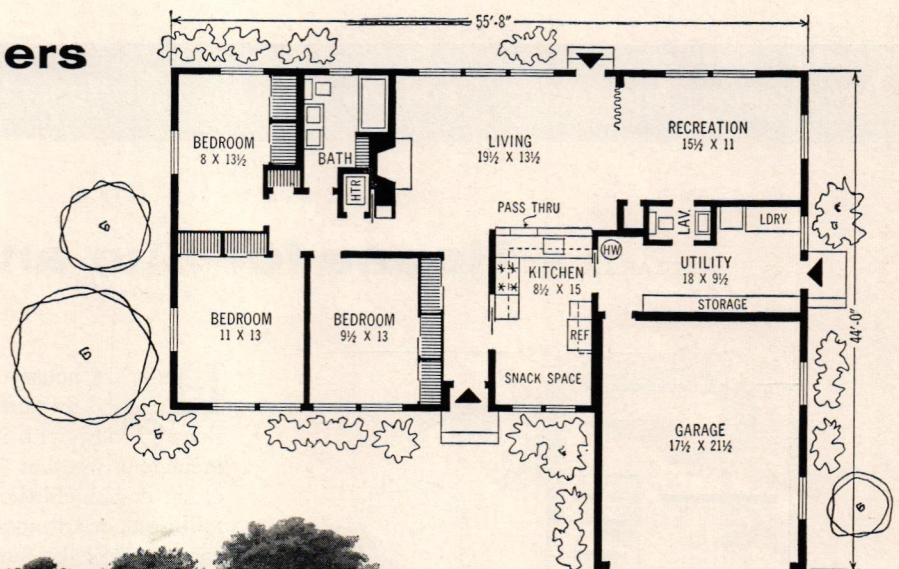
## without cutting corners



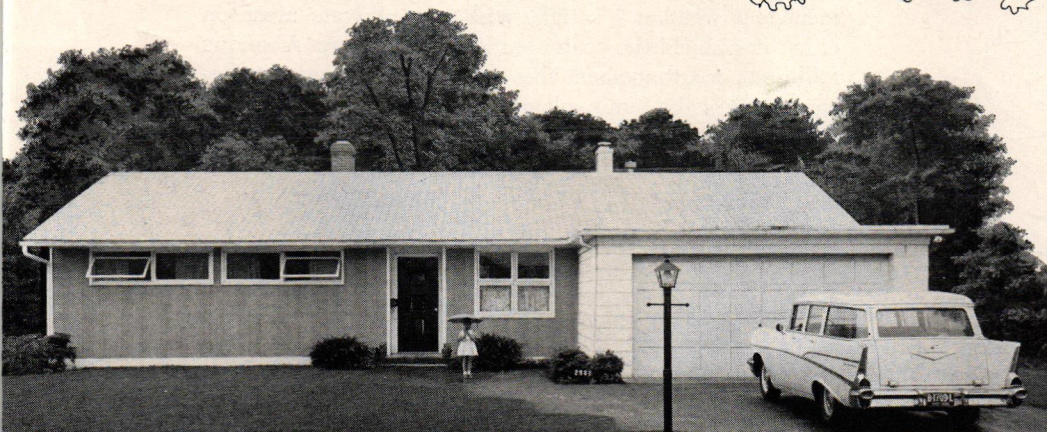
**FAMILY-TESTED  
HOME NO. PH 15-1B**



ARCHITECT:  
BURT V. STEVENS, A.I.A.



SIZE OF HOUSE:  
1,947 SQ. FT.,  
24,325 CU. FT.  
(including garage)

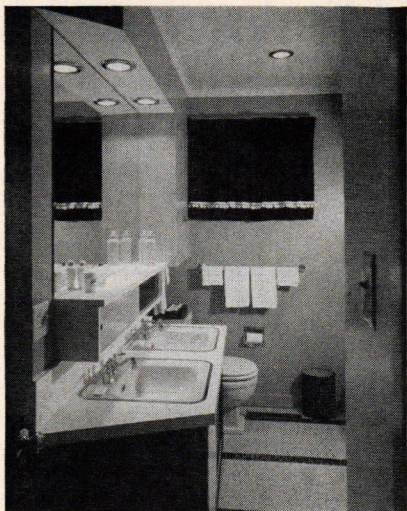


**In sunlight or shower** the good lines of the house stand out. Exterior walls of asbestos siding and a roof of USG Thick Butt asphalt shingles assure low maintenance for many years.

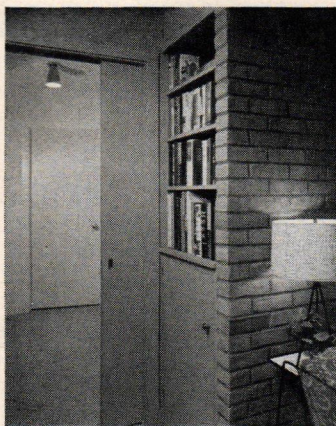
PHOTOGRAPHY: HEDRICH-BLESSING



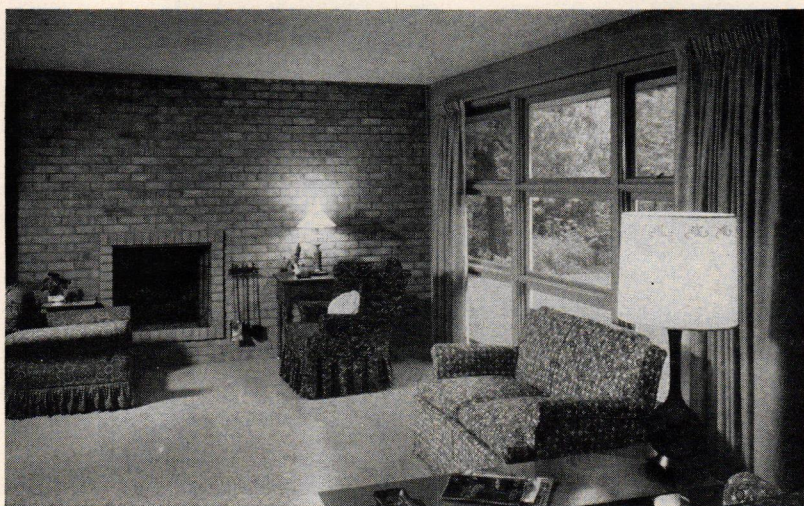
## House that cuts costs (Continued)



Luxurious look in the bathroom results from good choice of lights, simple cabinets, a wide mirror and lots of storage space. A lavatory off family room and utility space cuts wear—and extra steps.



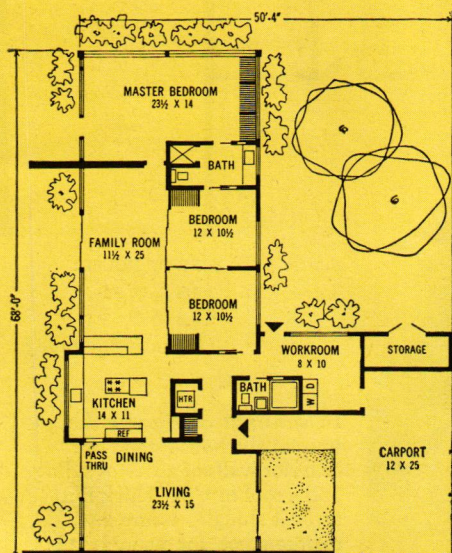
You can't waste space on a budget, and none is wasted here. Shallow niche beside fireplace is filled with books. Door which closes off the bedrooms from living space slides into fireproofed pocket between fireplace and closet containing heating plant.



Enjoying garden side privacy, the living area gets its light from a series of awning-type windows, its texture from the fireplace wall, its quietness from QUIETONE acoustical ceiling tile—applied in all non-utility areas.

Here's another fine home . . . you can order plans at Home Improvement Headquarters.

## POPULAR HOME'S House for Sun and Sand



HERE'S a house that adjusts itself to the weather. Designed by James B. Fiveash, Jr., the house is open to sky and view with interiors protected from direct sun. In inclement weather it's tight and snug. Private areas on either end shield the center-section activity core. A unique folding-door arrangement allows the children's rooms to become part of the family-playroom.

Like it? Then see your POPULAR HOME supplier for more details. He'll be pleased to order low-cost building blueprints for you. Just ask for . . .

FAMILY-TESTED PLAN No. PH 15-1C

(not available with basement).


SIZE OF HOUSE: 1,804 SQ. FT.,

19,844 CU. FT. (excluding carport)





If a  
better home  
is your

  
**AIM**

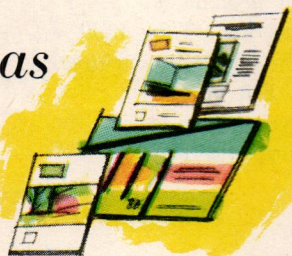
see us  
for...

## **A**dvice



Many questions come up on any modernizing project. How do we start? Who can help us? What can we do ourselves? How can we save? Get the right answers to these and many other questions from us, your Home Improvement Headquarters.

## **I**deas



We've a big collection of ideas for converting attics into bedrooms, closing in porches, finishing off basements, modernizing kitchens, adding closets—for every type of home modernizing. Pictures, easy-to-follow plans—all to help you!

## **M**aterials



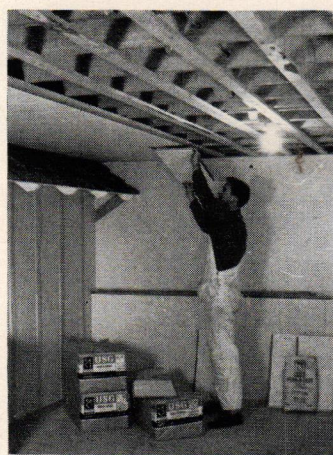
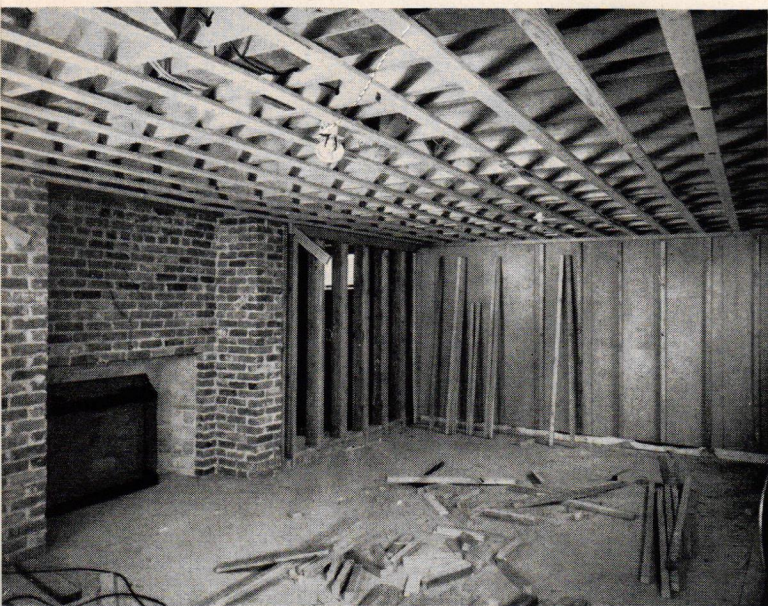
Everything you'll need—basic materials like lumber, millwork, cabinets, wallboard, insulation; many new materials to save you time and money. A big, big selection . . . money-saving prices . . . prompt service: Come in soon!

Our name is on the cover . . .



we're your Home Improvement Headquarters





**Original basement** (left) was typical—exposed concrete walls and floor, open ceiling joists, and a fireplace. But addition of furring strips laid groundwork for covering ceilings with QUIETONE acoustical tile (above, left) and walls with SHEETROCK gypsum wallboard and TEXOLITE DURAVAL paint. With a bit of shake roof for outdoor effect, painted floor and furniture (right), patio is ready to use—indoors!

**J**OAN and Burt Dinnison live in a picturesque small house in Veradale, Wash., a suburb of Spokane. Like many young families, they have small children (three), spend as much time as possible outdoors, and put a lot of effort into increasing the livability of their new home.

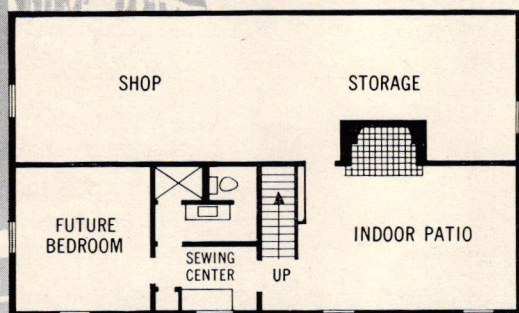
In warm weather everything was fine. They built a patio, bought furniture for it, and the children developed muscles and lungs in the open air. But in cold or rainy weather—about four months of the year—where could the noisy activity and summer furniture and children go?

Then "The Idea" came. They simply brought their patio into the basement. Patio furnishings are no longer stored away, but get twelve-month use. So do tricycles. The indoor playroom is large and easily supervised. And as a winter patio, the space is perfect for parties after skiing.

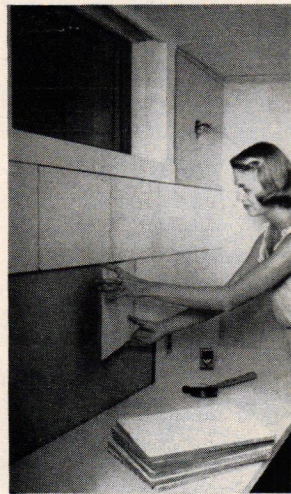
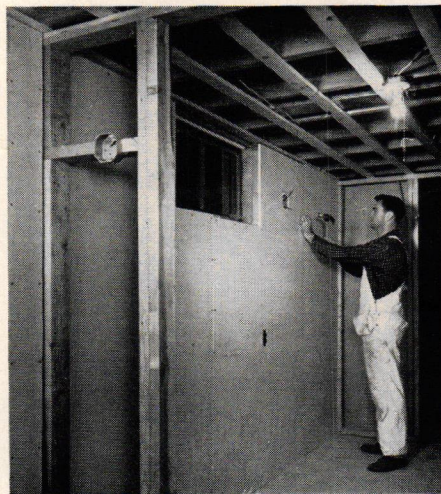
Perhaps the Dinnisons' ingenuity will help you solve your winter play-and-entertaining problem. In any case, step-by-step photographs of the Dinnisons transforming a barren basement into a photogenic patio show you how to improve the looks of any old room.

## They brought their patio **INDOORS**

PLAN OF BASEMENT



**Burt and Joan teamed up** smoothly, Burt doing the heavy work and Joan the meticulous finishing. To complete the sewing center, for instance, he nailed on furring strips and applied wallboard. She used wire nails to put up USG Insulating Tile to form a pin-up board for patterns.



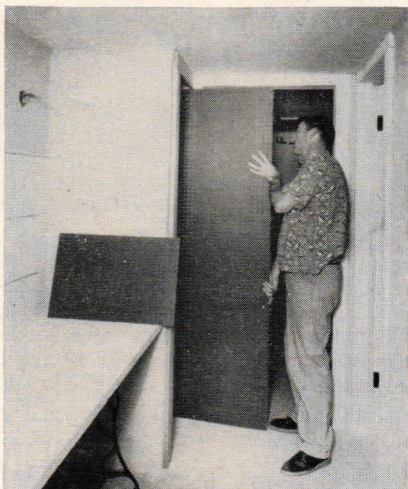




*More on next page*



**Teamwork continued** as Burt outfitted the sewing closet with USG Perforated Hardboard (below). Painting and using are entirely Joan's department (right).



EDITORIAL SOURCE: BETTY NORTHROP  
PHOTOGRAPHY: CUNNINGHAM

PHOTOGRAPHY: INFINITY, INC.

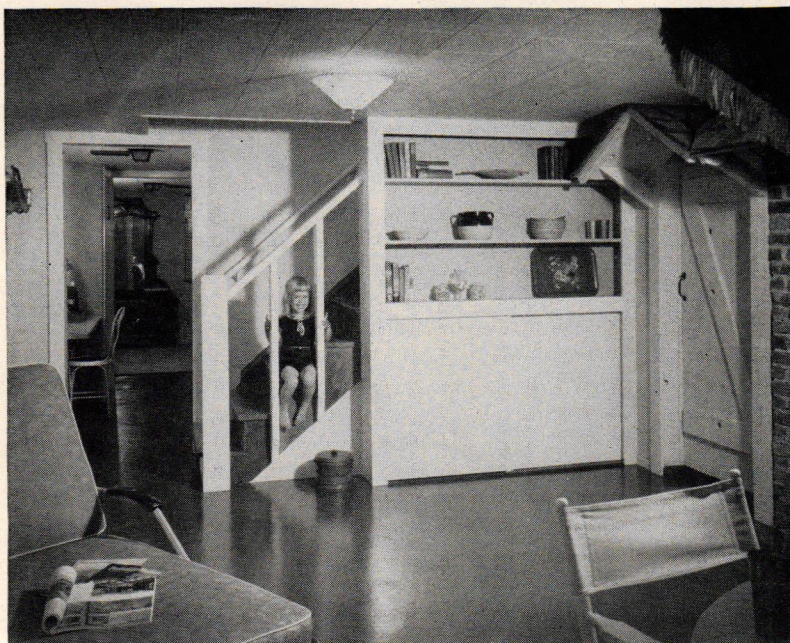




## Patio Indoors (Continued)



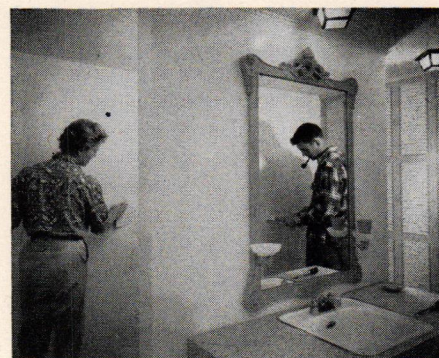
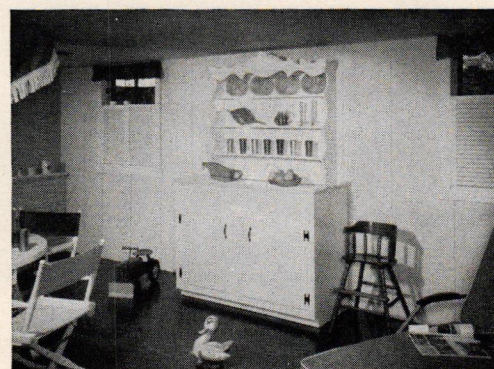
Enclosing the open stairway (below) eliminated a danger point and improved the looks of the basement patio. Sliding doors of DURON Hardboard below bookshelves hide games and easily spilled things that can't be kept with other toys. Back of cabinet is hardboard, too. Door leads to storage and Burt's shop.



To break the blankness of the end wall, Burt Dinnison furred out with 2x4s, faced both sections of the wall with SHEETROCK gypsum wallboard, and topped lower section with 1x4 display shelf.

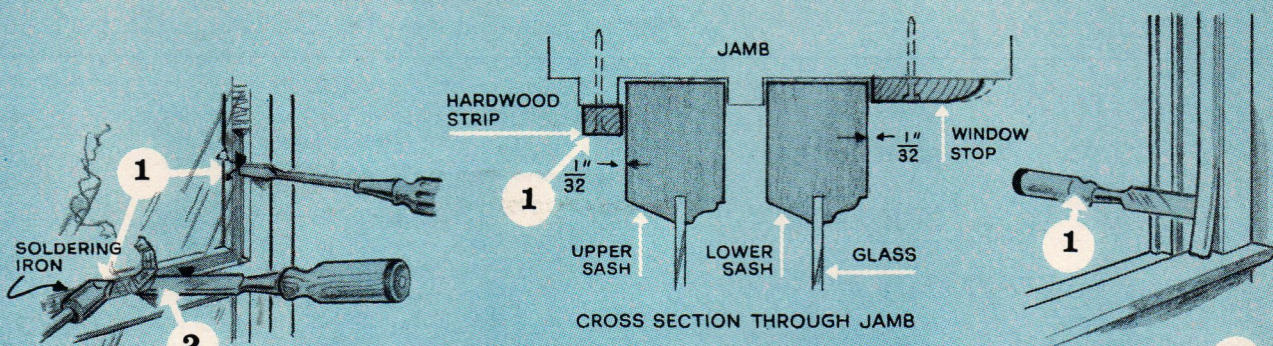


To break the blankness of the side wall, and to increase the apparent height of a low ceiling, Burt used thin batten strips at joints and midpoints of wallboard panels. Cabinet against wall is in two sections. Shelves are fixed, serve for storage and display. Lower half, for Bonnie Jo's and Amy's toys, rolls out from wall (left) where it doubles as a refreshment bar. Flowers on wall are painted.

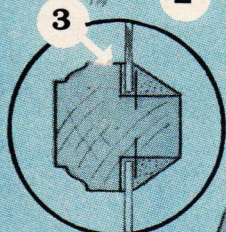


Work still goes on at the Dinnisons', at a when-we-feel-like-it speed. After this lavatory is finished, work begins on the bedroom. Burt is seen in mirror putting up a towel rod in the finished part of bathroom while Joan sands PERF-A-TAPE joint cement used to fill nail dimples in unfinished part.

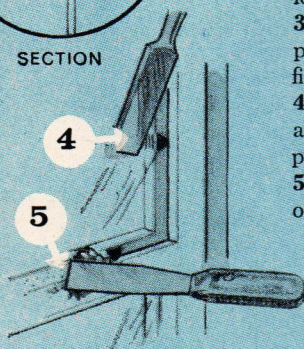




CROSS SECTION THROUGH JAMB



SECTION



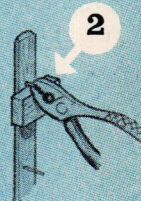
## loose pane

1. Soften old putty with soldering iron, remove it, ease out glazing points with screwdriver, take out glass.
2. Scrape glass rabbet to bare wood, coat with linseed oil or thin paint, let dry for an hour.
3. Butter inside edge of rabbet with putty, replace pane, pressing firmly into putty.
4. Press glazing points against glass and tap them home, so top edge point is just below putty line.
5. Reputty outside glass, clean off excess from inside of window.

## in-and-out rattle

can be cured by resetting the stop. If stop is held by screws, remove them, plug screw holes and reset stop, allowing  $\frac{1}{32}$ -in. between stop and sash.

1. If stop is nailed, gently pry it off.
2. Pull nails through back of stop; pounding them out splits wood. Then reset stop, and drive nails through new holes. This same resetting procedure will often repair a sticking window.

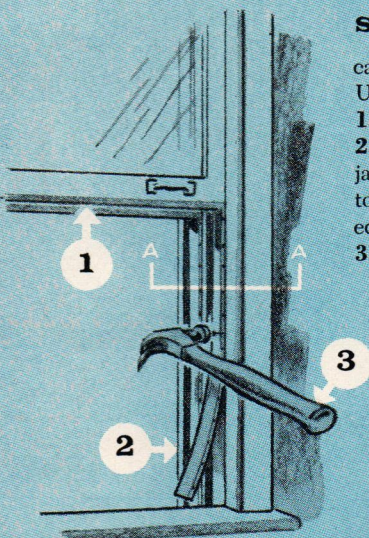


# the rattling window

## rattle in top sash

can be stilled two ways.

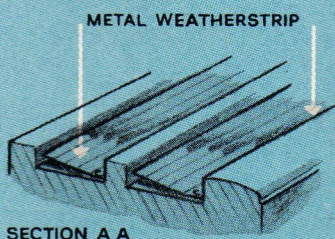
1. If you open top half of window often, fit a  $\frac{1}{4}$ -in. hardwood strip into gap between sash and stop. (See section at top of page).
2. If you rarely open the top sash, use a brass or aluminum angle, and screw it to the edge of the window stop.



## side-to-side rattle.

can be quieted with weatherstripping. Use metal if sash must slide.

1. Open window as far as possible.
2. Slide strip between sash and jamb with nailing edge closest to inside of house, and loose edge just missing window stop.
3. Tack weatherstripping in place.

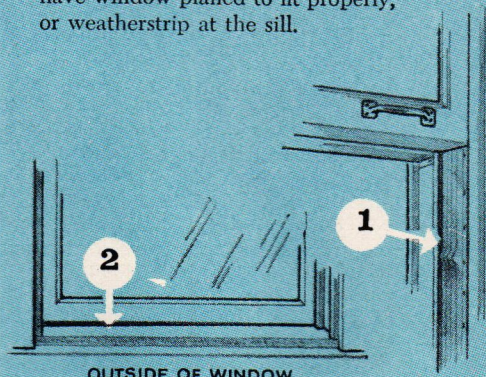


SECTION A A

## noise of vibration

from ill-fitted windows or weatherstripping.

1. Look for kinks where weatherstripping doesn't touch window; these spots will be dull and dirty. Bend strips until you have continuous contact; the "mooing" noise comes from vibration of the metal.
2. If a poorly fitted window gaps at the sill, have window planed to fit properly, or weatherstrip at the sill.





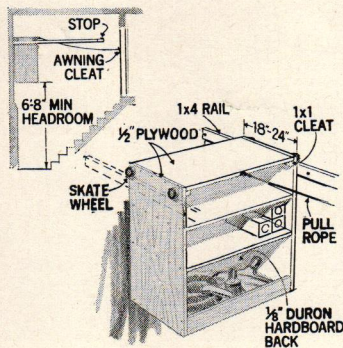
## short-term projects

ANY MAN with a hankering for tinkering likes to have a project going. It diverts his mind without absorbing all his leisure time. If you're looking for something to keep you busy, dig into one of the short-term projects on this page. You can finish some in a couple of hours, all within a couple of days. And you'll be the hero of the household.

### Rollaway storage

Harold L. Larsen of Ridgewood, N. J., has a clever way of using waste space over a basement stairway. He built a storage cabinet that runs on a track. Here's how you can adapt this idea to your house:

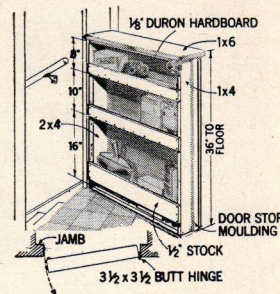
Assuming storage depth of 2 ft., find the point where lines 2 ft. from the wall and 6'-8" above the edge of steps intersect. At this height nail a 1x2 to each side wall, sloping these "rails" slightly toward the end wall. Build the cabinet (or buy an inexpensive one) to fit width of stair well and your reach, using plywood and hardboard. Cabinet rolls on roller skate wheels, and is pulled into reach by a rope.



### Handy half-door

In his kitchen in Oak Park, Mich., W. P. Norris devised a half door that serves three purposes: it keeps toddlers safe from a fall down basement stairs; it admits light when closed and maintains a feeling of openness in a small kitchen; and it provides storage space and a surface on which to set basement-bound items.

Hinged to a cased opening, the door is 36 in. high. The three shelves, and three sides of the frame are 1x4s; the hinge side is 2x4. Top shelf is a 1x6, and the back DURON Hardboard. The door is held with a screen door latch accessible on the shelf side.

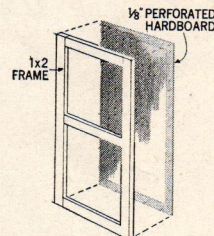
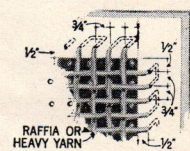
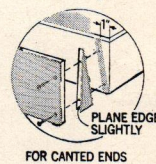
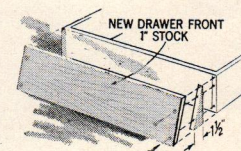


### From the House on the Cover

What makes the built-in on the cover of this issue so interesting? First, its random placement of bookshelves; second, simplicity of design; third, unusual drawer fronts; fourth, unusual doors.

You can easily add those decorative drawer faces to existing drawers. Remove existing handles or pulls. From 1-in. stock, cut pairs of right triangles, each with one side equal to the height of a drawer and the shortest side 1 1/2 in. Then cut new drawer fronts, again from 1-in. stock, of the size shown. Assemble new front with screws and glue, and screw and glue to face of drawer.

Those ventilating cabinet doors are made with a 1x2 frame. Weave raffia or heavy yarn through holes drilled 1/2 in. in from inside edge and 3/4 in. apart. Then screw a panel of USG Perforated Hardboard (here painted bright red) to back of frames to provide a flash of color.



**We're more than a lumber yard—**

**we're HOME IMPROVEMENT HEADQUARTERS!**

When you need advice, information or help of any kind on the subject of building, come in to see us. We sponsor POPULAR HOME for you, and our name appears on the front and back covers of this issue. Here are just a few of the services we offer:

- **Preparing to Remodel**—a comprehensive new Handyman Plan—No. 381—that will help you get started on that long-delayed remodeling job. No charge.
- **Idea Files**—free folders in full color with remodeling ideas for Family Rooms, Room Additions, Children's Rooms and Kitchens.
- **More Handyman Plans**—your choice of free how-to-do-it plans on such subjects as:

No. 341—Interior Remodeling  
No. 344—How to Build a Porch  
No. 347—Build a Home Workshop  
No. 351—Upstairs Remodeling  
No. 352—How to Build Wood Fences  
No. 355—How to Build a Patio  
No. 356—Downstairs Remodeling

No. 357—Swing-out Sewing Center  
No. 361—Closet Remodeling  
No. 363—Yard and Garden Projects  
No. 364—Carports & Garage Storage  
No. 365—Space-Savers and Dividers  
No. 366—Room Additions  
No. 367—A Room in your Garage

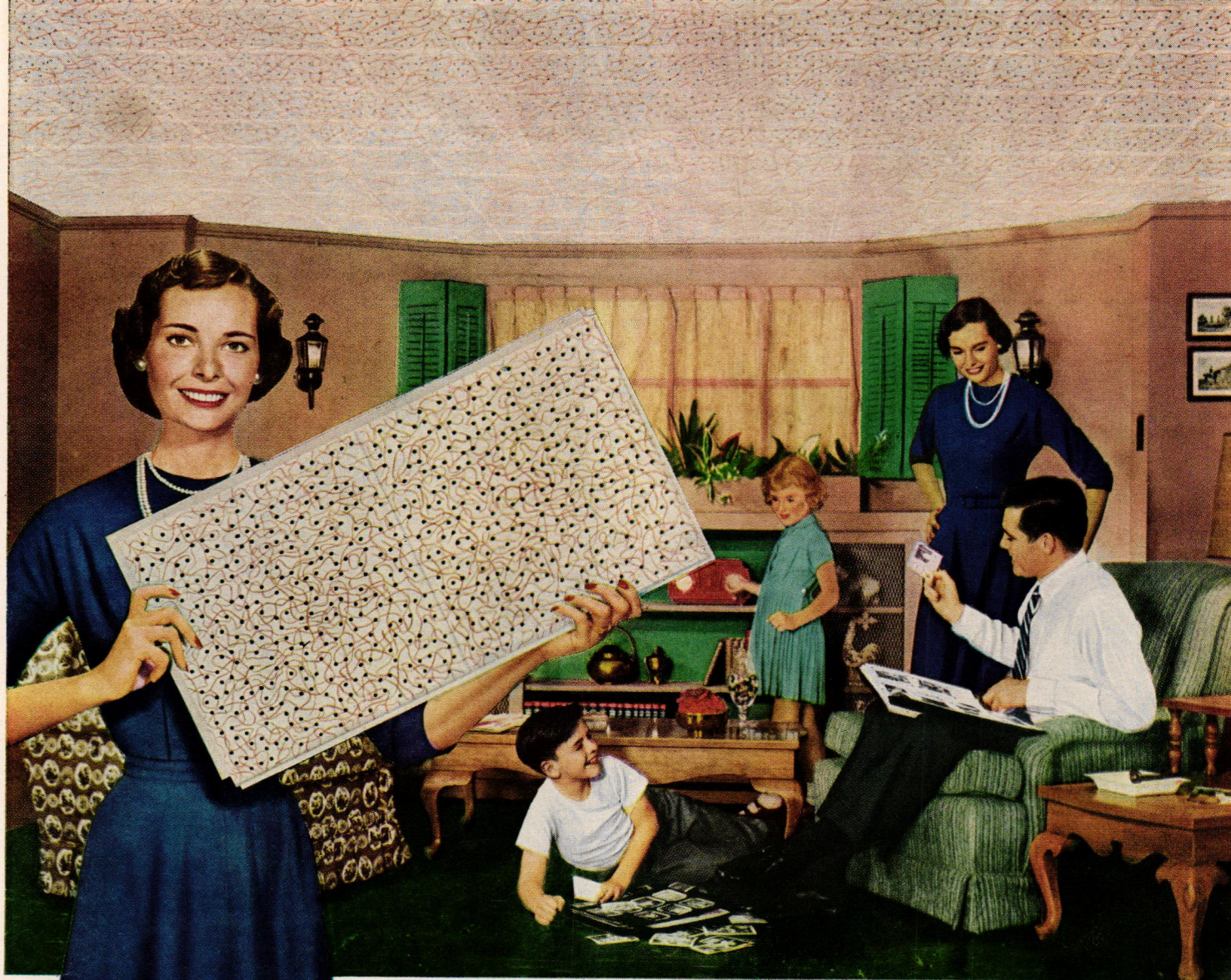
No. 368—Built-ins for Children  
No. 371—Interior Finishing  
No. 372—Laundry Helpers  
No. 373—Screen House  
No. 374—Exterior Maintenance  
No. 376—Walks, Walls & Driveways

- **Family-Tested Homes Plan Book**—76 pages of plans and pictures of new homes you'll want to build. Study it in our office or borrow it to look through carefully at home, or study Selector Cards at the Home Improvement Center on our counter.
- **Building Blueprints** of 67 houses and 4 summer cabins at nominal cost. We will be glad to order any of them for you.



NOTICE: The following trademarks are owned and/or registered by the United States Gypsum Co. in the U. S. Patent Office, and are used in this publication to distinguish the indicated products manufactured only by this company: SHEETROCK (gypsum wallboard), PERF-A-TAPE (joint reinforcement), USG (asphalt shingles, perforated hardboard, insulating tile), RED TOP (plaster), STRUCTO-LITE (basecoat plaster), AUDICOTE (acoustical plaster), ORIENTAL (stucco), QUIETONE (acoustical tile), DURON (hardboard), TEXOLITE (paint products), DURAVAL (latex paint).





Smart new fashions for ceilings...

# USG® Fashion Tiles

in QUIETONE® Acoustical Tile and Insulating TWIN-TILE

## 6 smart tiles to choose from

Your choice of RANDOM LINE QUIETONE, RIB LINE QUIETONE, and RANDOM LINE TWIN-TILE... in Pewter Gray or Coppertint. See these new fashions for ceilings at your U.S.G. building materials dealer. His name is on the covers.

*Here's the newest idea* in home remodeling and building—USG FASHION TILES! Created by the celebrated designer Gyorgy Kepes, these smart, modern patterns are versatile... low in cost... help create a mood of warm friendliness, classic dignity, or gaiety.

There are six distinctive tiles in all, each color-planned to harmonize with the walls and furniture in your rooms. Four styles are specially designed to absorb sound, yet their surface appears almost free of perforation. *All* styles achieve a smooth flow of pattern across the entire ceiling.

Make plans now to modernize with USG FASHION TILES... and give your rooms added beauty, quiet and insulation.



Another better product for better living from  
**UNITED STATES GYPSUM**

The greatest name in building

\*T. M. Reg. U. S. Pat. Off.

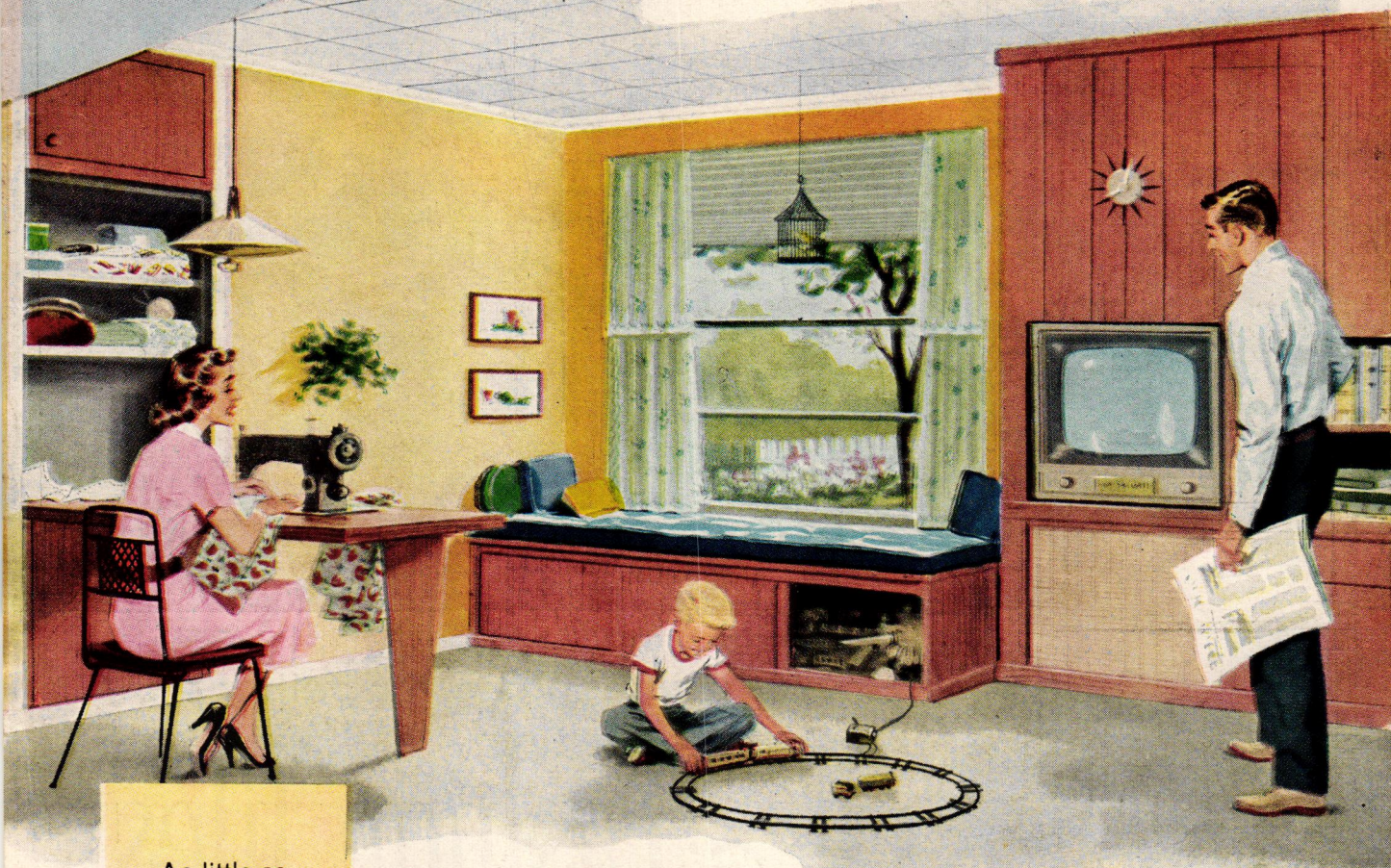


If undeliverable at address shown  
**DO NOT FORWARD, RETURN TO**  
**United States Gypsum Company**  
300 West Adams Street, Chicago, Ill.  
Return Postage Guaranteed

CLARENCE S RICE  
360 W 13TH AVE  
EUGENE OREG  
7113-1238

BULK RATE  
U. S. Postage  
**PAID**  
Chicago, Ill.  
Permit No. 4511

# Good news !



As little as  
**\$29.75**  
per month  
for  
remodeling  
a room

## BUILD A ROOM NOW...NO MONEY DOWN

Yes, here's *really* good news! You can make that big move toward better living right now. Thanks to our Home Improvement Budget Plan, you can spread out the cost in easy-to-pay monthly installments and there's no down payment! Whatever you need—an added room, a new roof, or an exterior face-lifting for your home—this plan enables you to have it now, when you *really* need it. Stop in soon and we'll show you how!

USE OUR BUDGET PLAN



## Eugene Planing Mill

Follow Our Lines to Better Living

306 Lawrence Street

Eugene, Oregon

Phone DI 5-8773