

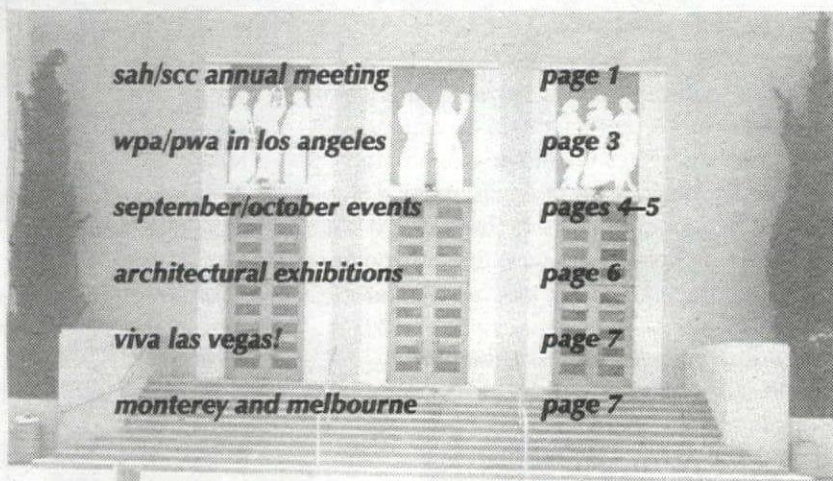
SAH/SCC

SOCIETY OF ARCHITECTURAL HISTORIANS
SOUTHERN CALIFORNIA CHAPTER

post office box 92224, pasadena, ca 91109-2224

800.9SAHSCC

S 6
W 9
E 9
N 1
september/october 1996



sah/scc annual meeting page 1
wpa/pwa in los angeles page 3
september/october events pages 4-5
architectural exhibitions page 6
viva las vegas! page 7
monterey and melbourne page 7

U.S. Postage
FIRST CLASS MAIL
PAID
Pasadena, CA
Permit No. 740

All members are invited to the Annual Meeting held at South Pasadena High School.

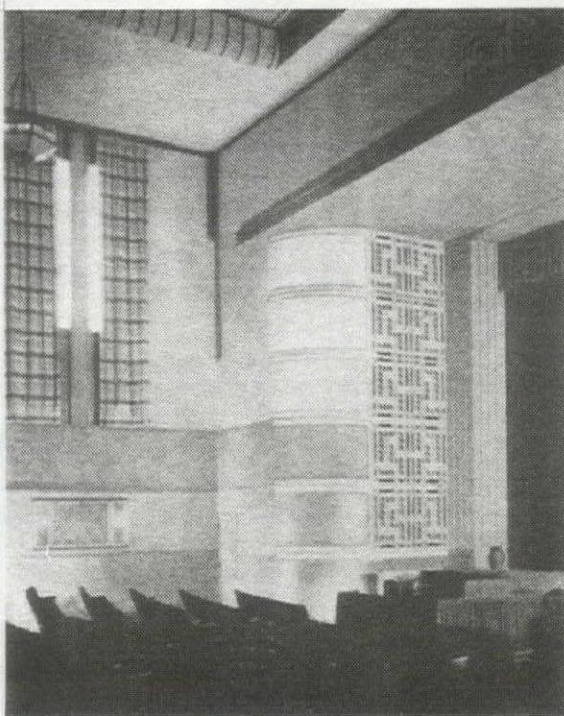
SAH/SCC ANNUAL MEETING LOOKS AT WPA/PWA

ROBERT WINTER IS KEYNOTE SPEAKER, SUNDAY, OCTOBER 27TH
RECEPTION, RAFFLE, NETWORKING, SILENT AUCTION

Enjoy a memorable afternoon of talks, reception, silent auction, raffle and networking with your fellow SAH/SCC members. All members are invited (free) to attend the annual meeting, which will feature founding member Dr. Robert Winter (see profile on page 3), who will speak about the importance of the Works Projects Administration to Southern California's built heritage. We will learn more about this government program that helped shape Los Angeles' built terrain in a WPA project dating from 1937: the South Pasadena High School Auditorium.

After a reception to say hello to old friends and to greet new members, we will have a short business meeting to bring you up to date on the Society. The out-going president, Jeff Samudio, will review the Annual Report, recognize volunteers and donors, and announce the new slate of board members (see ballot on page 2).

Prior to Dr. Winter's keynote address, two other architectural scholars will present papers on aspects of WPA/PWA in Los Angeles. Mitzi Mogul, president of the Art Deco Society of Los Angeles, will discuss schools, and Orville Clark will educate on murals.



The South Pasadena Junior High auditorium in 1937. (Photo: Public Buildings: Architecture Under the Public Works Administration, 1933-39, Vol. I, by C. W. Short and R. Stanley-Brown, published by Da Capo.)

During the reception, members will have the opportunity to purchase raffle tickets (each a mere \$2) to win a variety of prizes, including tours, museum memberships, books and other architecturally appropriate items. There's also a silent auction for exciting items such as tickets to the opera and fine furnishings. Copies of the newly re-named *The Dr. David Gebhard Review*, which will publish the papers and other Society news, will also be distributed to members. (Members who aren't able to attend the meeting, may receive *The Review* by sending a check for \$3 to cover postage.)

A special, post-meeting dinner with Bob Winter is open to the first 20 members to donate \$100 to SAH/SCC. This intimate gathering will

give you the chance to talk personally with Dr. Winter at one of his favorite restaurants, the Raymond House in Pasadena.

The meeting begins with a reception at 3PM on Sunday, October 27th, at South Pasadena High School Auditorium, 1401 Fremont Avenue, South Pasadena. Admission is a privilege of your annual membership, as is *The David Gebhard Review*. We welcome—and encourage—guests at a fee of \$10, plus an additional charge for *The Review*, if desired. Or, better yet, they can become members on the spot! This is a great event to bring interested friends and colleagues—and to increase membership of the Society.

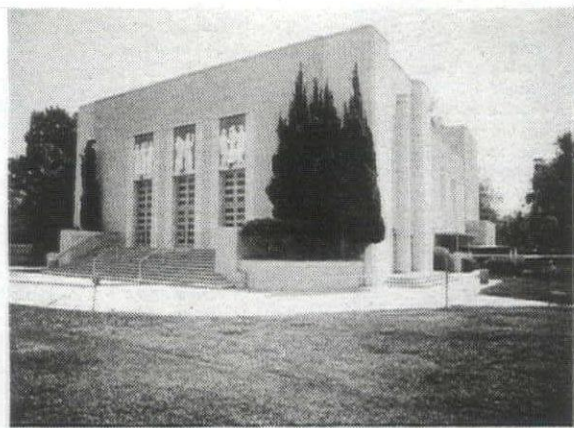
For more information on the meeting, call 800.9SAHSCC; for specifics on the dinner with Bob Winter, call Rebecca Kahn at 310.479.7936.

DON'T MISS WPA/PWA IN LA

See an impressive roster of WPA/PWA projects in Los Angeles, Long Beach and Whittier on this special, one-day bus tour, Saturday, September 28th.

Shining examples of the Federal Government's support of art and architecture abound in the Los Angeles Area. Our tour guides will take you into and around important public buildings and artwork.

See page 3 for more details.



South Pasadena Junior High exterior as it looks today.

Message from the President: Defending Our Heritage

In this politically charged season, it is important for us to remember why our membership and support of the SAH/SCC is more crucial now than at any other point in our history. The past few months have seen the most serious challenges to preservation laws in the past two decades. The notion of what constitutes property rights has never been so disjointed and skewed. Through these challenges involving religious structures, naval bases, and even McDonald's restaurants, we must remember that we are part of a larger collective that creates laws to ensure harmony and fairness to all. Laws protecting our built heritage are an integral part of environmental laws ensuring that resources are not squandered or exploited beyond a reasonable threshold. What we have seen in just a few short months are challenges to the belief that our entire environment, built or natural, is open to exploitation and personal greed beyond a point that has normally been regarded as fair by society and the courts.

This organization and others that have stood up for the processes that have been fairly developed and tested since the early 1970s have been called elitist, racist, and worse yet, obstructionist, by some of the most influential powers in the city and state. For this we must be strong to be in the seemingly few who have braved and sacrificed to say that the citizens of this state are not being given fair or adequate notification of the true facts. Our charge is education about the built environment in Southern California. We must stop the notion that there is no history nor story to tell about this region. Our history is diverse and eclectic, for this we owe ourselves to stand up and fight for these stories to be heard. I urge you to increase your membership, or send gift memberships that will help to spread our story, and continue our mission of fighting for the heritage of Southern California.

— Jeff Samudio

MEET THE BOARD

There's a new slate of SAH/SCC Board Members to be approved by the membership. We've outlined the responsibilities of each office below, and present information on each of the candidates. Use this ballot to vote with at the Annual Meeting on Sunday, October 27th, or send it in. There's an opening for Treasurer. Any interested members can call 800.9SAHSCC.

President guides the chapter and is responsible for effective organizational operation

□ John Berley is completing his masters thesis in architecture at Cal Poly Pomona. He has lived in LA since 1982, and has a broad background in advertising, graphic design and printing.

Vice President shares duties of the president when warranted

□ Nancy Smith is a restoration designer of residential properties. Her wish is to provide members the opportunity to visit Southern California's architectural treasures and gain a sense of our past and present architectural history.

Treasurer stewards organization's finances, including receiving, investing and disbursing chapter funds and maintaining records

□

Recording Secretary maintains chapter meeting minutes; organizes meetings and agendas

□ Jennifer Minasian is an architectural and historic researcher at Historic Resources Group, an historic preservation consulting firm. She is in the process of completing her master's thesis in art history through the University of Chicago.

Membership Coordinator handles yearly membership renewals; coordinates membership mailings;

□ Merry Ovnick is an instructor of cultural history at California State University, Northridge, where she coordinates the interdisciplinary program on "Los Angeles: Past, Present, Future." She is also an instructor of humanities at LA Valley College, and the author of *Los Angeles: The End of the Rainbow*.

Internet Editor maintains relations with an internet service provider; designs and maintains website

□ Barbara Lamprecht's M.Arch. thesis explores pre-fabricated building systems. She combines the practice of architecture with writing about it for *Metropolis* and *The Architectural Review*, among others. She initiated SAH/SCC's website, and directed the re-design of SAH/SCC News.

Preservation Officer represents chapter at public hearings; coordinates preservation activities

□ Grant Taylor is a fifth-generation Californian who was schooled in architecture at Texas Tech University. He is an historic preservation restoration consultant, who has worked in the architecture field for the past 12 years.

Publicity Coordinator works with local media to promote tours and SAH/SCC membership; assists with the development of promotional material

□ Alison Cotter is director of marketing and communication for the fundraising and education divisions of the Music Center of Los Angeles County. She has a B.S. in marketing from Syracuse University, and a background in public relations.

Volunteer Coordinator organizes volunteers for events and tours; prepares and educates volunteers for upcoming events

□ Rebecca Kahn has been a special education teacher/administrator for the past 32 years, presently working within the Los Angeles Unified School District. Since arriving in Los Angeles in 1964, she has been interested and active in organizations promoting the history and preservation of LA's public and private buildings of architectural merit.

Events Coordinator maintains calendar of chapter activities and events; works with board to develop guidelines for successful events

□ Rochelle Dynes Mills is partner, with her husband Jeff, in the design/build firm, Mills, Inc. She is also founder of Architours and P.R.chitecture, and is editor of *LA Architect*, a monthly architecture newspaper.

Advisory Board Coordinator works with the board and membership to establish and maintain a committee of advisors who will help in the promotion of the organization's events and membership

□ Sian Winship is a fourth generation native Californian, and a five-year member of SAH/SCC. She is a 10-year advertising veteran, who is presently management supervisor at TBWA Chiat/Day Advertising.

UTILITAS FIRMITAS VENUSTAS UTILITAS FIRMITAS VENUSTAS
UTILITAS FIRMITAS VENUSTAS UTILITAS FIRMITAS VENUSTAS
UTILITAS FIRMITAS VENUSTAS UTILITAS FIRMITAS VENUSTAS
UTILITAS FIRMITAS VENUSTAS UTILITAS FIRMITAS VENUSTAS

SAH/SCC NEWS is published bi-monthly by the Society of Architectural Historians/Southern California Chapter. Subscription is a benefit of membership.

Editor: Julie D. Taylor

Newsletter Committee:

Barbara Lamprecht; Rebecca Kahn

Executive Assistant: Grace Samudio

Information for the newsletter should be sent three weeks before the issue date.

Issue	Deadline
Nov./Dec. 1996	October 10
Jan./Feb. 1997	December 10
March/April 1997	February 10
May/June 1997	April 10

Please send all notices of events, exhibitions and news—plus photographs—to the attention of the editor:

Julie D. Taylor, Editor
SAH/SCC News
P.O. Box 92224
Pasadena, CA 91109-2224
telephone: 310.247.1099
fax: 310.247.8147

SAH/SCC News welcomes reviews and articles by chapter members. If you are interested in writing for the News, please call the editor.

SAH/SCC Board Members

President: Jeffrey B. Samudio

Vice President: Rebecca Kahn

Treasurer: John Berley

Recording Secretary: Jennifer Minasian

Membership Coordinator: Rochelle Dynes Mills

Preservation Officer: Grant Taylor

Internet Editor: Barbara Lamprecht

Publicity Coordinator: Alison Cotter

Members at Large: Nancy Smith; Merry Ovnick

Life Members:

Grant Barnes	David C. Mincy
Kathleen Bixler	Le Roy Misuraca
Mary Dutton Boehm	Susan W. Monteith
Bill Bowling	Doug Moreland
Ruth Bowman	Sara G. Muller Chernoff
Lynn Marie Bryant	Betsy Murchison
Bonnie Burton	Peter A. Nimmer
David G. Cameron	John M. Nisley
Miriam Campbell	Thomas O'Connor
Sam Campbell	Anne Otterson
Robert Jay Chappel	C.E. Parker
Jeffrey Cook	Audree Penton
Stephen P. Danforth	Standish K. Penton
Tim Day	John August Reed
Astrid E. Ellersieck	Claire Rogger
Heinz E. Ellersieck	Richard Cayia Rowe
J. Richard Fare	Jeffrey B. Samudio
Donald R. Ferguson	Walter B. Silber
Gilbert Garretti	Patricia Simpson
Sukey Garretti	Cecilia Singer
Dr. & Mrs. Kenneth Geiger	Stanley H. Singer
Gordon Gilliam	Mark Slotkin
Joy Gilliam	Janann Strand
Paul Gleye	Vern Swansen
Stephen Harby	Lorenzo Tedesco
Eugene Hoggatt	Reg Thatcher
Shirley Hoggatt	M. Brian Tichenor
Elaine K. Sewell Jones	Mr. & Mrs. A. Tischler
Stephen A. Kanter	Maggie Valentine
Virginia Ernst Kazar	Harriette von Breton
Marilyn Kellogg	Robert D. Wallace
Theodora Kinder	John Wamke
Charles A. Lagreco	Lori Wamke
Ruthann Lehrer	Patricia A. Warren
Joyce P. Ludmer	Ron Watson
Randell L. Makinson	David R. Weaver
Christy Johnson McAvoy	John Welbome
Elizabeth McMillan	Joanne William
	Robert Winter

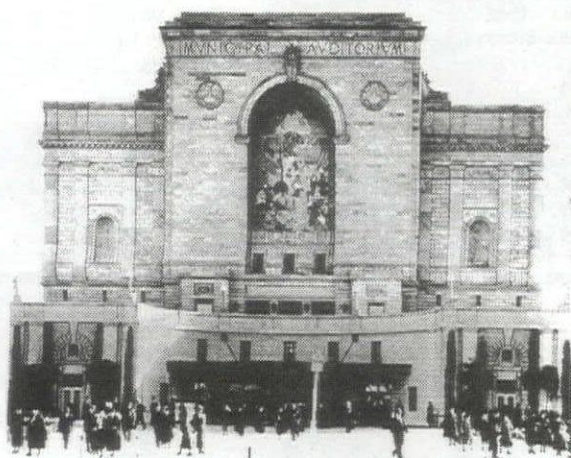
Honorary Member: Robert Pierson

UTILITAS FIRMITAS VENUSTAS UTILITAS FIRMITAS VENUSTAS
UTILITAS FIRMITAS VENUSTAS UTILITAS FIRMITAS VENUSTAS
UTILITAS FIRMITAS VENUSTAS UTILITAS FIRMITAS VENUSTAS
UTILITAS FIRMITAS VENUSTAS UTILITAS FIRMITAS VENUSTAS

COME TOUR THE PWA IN LA

SATURDAY TOUR, SEPTEMBER 28TH

Everyone is invited to join us on an all-day trek through Depression-Era Los Angeles as we explore, and more importantly, experience the legacy of art and architecture left to us by the Public Works Administration from 1930 through 1941. The plentiful and sometimes great work of the PWA and WPA/FAP can be found throughout the Southland. It will be our objective to bring to life the wonderfully expressive qualities, ideas and optimism of the artists and the architects, who infused many educational facilities and public buildings with the message of hope and promise for the future, despite the economic devastation and hardship of the late 1920s and early '30s.



The Long Beach Auditorium, built in 1932, included "Recreation" mural.

From Los Angeles, to Whittier to Long Beach, we will ride first-class by private charter and visit the work of architects Stiles O. Clements, John and Donald Parkinson, William H. Harrison, Hugh Davies and Gordon Kaufman, as well as artists Bartolo Mako, Stanton MacDonald Wright, Merrell Gage, George Stanley and many others.

A small sampling of places that we will visit includes:

- U.S. Naval & Marine Reserve Armory, a building that, at the time of construction, was the largest enclosed structure without columns in the world
- The Mural "Recreation" by Stanton MacDonald Wright, which is all that remains of the demolished Long Beach Municipal Auditorium
- Hollywood High School, which exemplifies the marvelous combination of PWA architecture and WPA/FAP artwork together in one place, and is still serving to inspire generations of young Angelenos to this day
- Henry Hoover School, a beautiful, little jewel of a building embellished with inspiring relief sculpture, tucked away in Whittier

Members and non-members alike are encouraged to sign up now as this tour has limited seating for only 45 people, and is filling up fast! Coordinated by SAH/SCC Board Members Nancy Smith and John Berley, and accompanied by



Only the mural is left from the 1975 demolition of the Auditorium.

historian Mitzi Mogul, the tour promises a full day of adventure. So come along and experience with us a taste of the artistic and historic heritage of our great city. Register for WPA/PWA in LA, Saturday, September 28th, \$50 for members, \$65 for non-members. For information, call 800.9SAHSCC.

SAH/SCC MEMBER PROFILE

DR. ROBERT WINTER: FOUNDING MEMBER, LIFE MEMBER

Noted author and architectural historian Bob Winter is a founding member of the Society of Architectural Historians/Southern California Chapter. Arthur G. Coons Professor of the History of Ideas, Emeritus, Dr. Winter was a faculty member at Occidental College for 32 years, and before that taught at Dartmouth, Bowdoin and UCLA. He is well known for his authoritative works *Los Angeles: An Architectural Guide* and *A Guide to the Architecture of San Francisco and Northern California*, both of which he co-authored with the late David Gebhard. His solo work *American Bungalow Style* was published this past spring and *Toward a Simpler Way of Life: Arts and Crafts Architects in California*, which he edited, will appear in bookstores next year.

With David Gebhard, Jay Freierman, Randell Makinson and other national SAH members, Bob helped to found the Southern California Chapter in the early '60s. "The beginning of SAH/SCC was fairly informal," remembers Bob. "In those days, architectural historians were few and far between. We decided to get together partly because we enjoyed each other's company, but also because we thought that the SAH should be represented in Southern California." Bob served as the group's president for a three-year term and was on the Board of Directors of the national SAH for two years.

Bob's love of California architecture grew from his years of research and exploration. He came to UCLA from Dartmouth in 1956. "Coming from the Midwest, I didn't have a high regard for Los Angeles and its architecture in the early days. But, driving up and down the streets in the Hollywood Hills, David and I discovered that Los Angeles is truly the capital of the Modern Movement in domestic architecture. We also recognized the

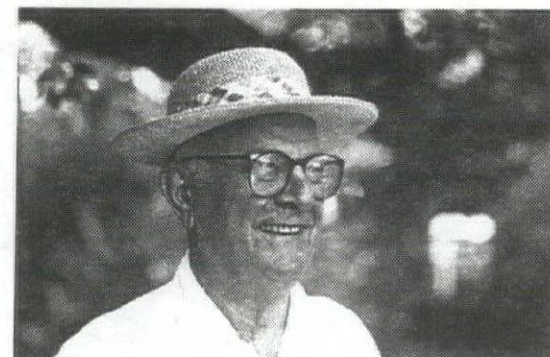
quality of our Arts and Crafts architecture and the work of Charles and Henry Greene, in particular. Then we sorted out the best of what little Victorian architecture remains in Los Angeles. We didn't do so well by the common architecture of the fifties."

In addition to his involvement with SAH/SCC, Bob was a member of the Pasadena Cultural Heritage Commission and the Los Angeles Cultural Heritage Board, and is still actively involved in the California Preservation Foundation and the National Trust for Historic Preservation. In recognition of his achievements, he received the 1996 President's Award from the California Preservation Foundation and the 1993 Donald Pflueger Award from the Historical Society of Southern California.

Bob credits the SAH/SCC, along with the L.A. Conservancy, with raising people's consciousness of the richness of Los Angeles' architecture. "I think people are more aware of our history and of the need to preserve our history as the city continues to expand," he said. "Our tours, in particular, are a great way to help people recognize the need to preserve our city's significant buildings."

Joining a distinguished group of individuals whose donations help to strengthen the organization, Bob is a Life Member of the SAH/SCC. He continues to support the organization he helped to found and will be the featured speaker at the October 27th Annual Meeting. A special dinner with Dr. Winter following the event is planned for donors of \$100 and above. (See page 1.)

This is the first in a series of Life Member profiles compiled and written by Alison Cotter.



SAH/SCC founding member Dr. Robert Winter. (Photo: Alexander Vertikoff)

AN EVENING WITH KEVIN STARR

NOVEMBER 18TH

Join State Librarian, USC professor and prolific writer Dr. Kevin Starr for an evening of fascinating discussion on November 18th. We will gather at Santa Monica High School's Barnam Hall to hear Dr. Starr preview his upcoming books *The Dream Endures: California Into the 1940s and War* and *Return: California to 1950*. This evening lecture is open to all, with admission of \$10 for SAH/SCC members, and \$15 for non-members.

Dr. Starr was appointed by Governor Wilson as chairman of the California Gold Discovery to Statehood Sesquicentennial, and is a professor at the School of Urban and Regional Planning at the University of Southern California. He is a contributing editor to the *Los Angeles Times*, and is the author of *Americans and the California Dream, 1850-1915*; *Land's End, a Novel*; *Inventing the Dream: California Through the Progressive Era*; *Over California*; *Material Dreams: Southern California Through the 1920s*; and *Endangered Dreams: The Great Depression in California*.

SAH/SCC EVENTS

SAH/SCC EVENTS

3



The Covina Bowl is just one stop on the Googie Tour of post-war urban architecture. (Photo: Harry Taylor)

september

1-2, Sunday-Monday

Los Angeles' 215th Birthday Celebration. Event to commemorate the founding of LA in 1781, with historic re-enactments, entertainment. El Pueblo de Los Angeles Historic Monument, Olvera St., LA. 213.625.5045.

1, 22, 29, Sunday

Venice Ocean Front Walking Tour. Tour boardwalk and see exhibits with Venice historian Elayne Alexander. Venice Historical Society; 8:50-11AM; \$10; res. req. 310.676.0273.

4, Wednesday

Color, Texture, Shape, Design. The Penny-Pinchers Guide to Art Collecting with art consultant Lenore Stern Morris. Pacific Design Center, Design Finland, 8687 Melrose Ave., Suite G197, LA; 3:30PM; free. 310.659.2075.

5, Thursday

Pasadena Art Walk. Self-guided, Old Town open house with special events, artists, refreshments. The Armory Center for the Arts; 6-10PM. 818.792.5101.

5, Thursday

A Taste of Sotheby's. Art talks: *Design: 1750-1950; Architecture in Jewelry; The Fine Art of Prints and Printmaking.* Pacific Design Center, Center Green Theater, 8687 Melrose Ave., LA; 6:30-9PM; free. 800.PDC.3272.

7, Saturday

Claremont Walking Tour. Given by Claremont Heritage of village area, historic Victorians, college and commercial buildings. Meet at Sumitomo Bank, 102 Yale Ave.; 10AM-Noon; \$5; res. req. 909.621.0848.

7, Saturday

Downtown Los Angeles Walking Tours. Tours of Art Deco, Broadway Theaters, Little Tokyo, Pershing Square Landmarks, Terra Cotta. L.A. Conservancy; 10AM-Noon; \$5. 213.623.2489.

7, Saturday

A Jiggs Gallagher Special. Tour. Neighborhood Place Project; \$10; res. req. 909.982.3225.

7, 14, 21, 28, Saturday

Googie Tours. Choice of three-to-five-hour tours: The San Gabriel Valley, Behind the Orange Curtain, Coffee Shop Modern & More, Cocktails 'N' Coffee Shops, given by preservationist John English. \$35; res. req. 213.980.3480.

7, 14, 21, 28, Saturday

Turistorica Walking Tours. Given by Architectural Foundation of Santa Barbara and Citizens Planning Foundation of Santa Barbara. Meet at City Hall Steps, De La Guerra Plaza, SB; 10AM-Noon; \$5. 805.965.3021 or 805.965.6307.

7, 21, Saturday

Small Projects Office Practice. Profit-enhancing seminar. Pasadena & Foothill Chapter/AIA, 555 S. Oak Knoll Ave., Pasadena. 818.796.7601.

8, Sunday

Architectural Drill Team. Organization meeting for drill team of architects and designers to march in the Pasadena Doo Dah Parade, November 24th. Bergamot Station, 2525 Michigan Ave., Space T5, SM; 10AM. 213.294.5825, Rochelle.

8, Sunday

Highland Park Heritage Trust Awards Ceremony. Speaker: Robert Winter. Southwest Museum, 234 Museum Dr., LA; 2-5PM; free. 213.256.4326.

8, Sunday

Creating the Dream: The Rise of a California Lifestyle. Lecture by Kevin Starr, discussing forces shaping the California Dream in the late 19th and 20th centuries. San Diego Historical Society; \$10-12, res. req. 619.232.6203, ext. 100 or 103.

9, Monday

Moving Towards 2000. Lecture on the state of entertainment lighting. Designers Lighting Forum; 6PM product display; 7PM program; \$5-10, res. req. 310.476.9200, Barbara Hirsch.

10, Tuesday

Investments in and Solutions for Troubled Hotels. Real-estate seminar with Cynthia Futter. UCLA Extension, Westwood Marquis, 930 Hilgard Ave.; 9AM-5PM; \$195. 310.825.9971.

11, Wednesday

Traditional Art for the 21st Century. The Penny-Pinchers Guide to Art Collecting. Pacific Design Center, Elijah Slocum, 8687 Melrose Ave., Suite G882, LA; 3:30PM; free. 310.289.8011.

11, Wednesday

Children Experimenting With Architecture. Beginning of fall session classes, each Wednesday for children 5-12, given by Kids' Studio. Pacific Design Center, 8687 Melrose Ave., LA; 4-6PM. 213.655.4028.

11, Wednesday

Architecture: A Moral Sense. Lecture with architect Samuel Mockbee, FAIA, partner, Mockbee/Coker Architects, and professor of architecture at Auburn University. SCI-Arc. 5454 Beethoven St., LA; 7:30 PM; free. 310.574.1123.

12, Thursday

Malibu, Macaws & Marlins: The Art of Tile—Southern California Style. Exhibition preview opening. Santa Barbara Historical Museum, 136 E. De la Guerra St., SB; 6:30-7:30PM; \$5-7; res. req. 805.966.1601.

12, Thursday

Masters of Architecture. Lecture by Kisho Kurokawa, sponsored by AIA/LA, LACMA. Los Angeles County Museum of Art, Bing Theater, 5905 Wilshire Blvd., LA; 6:30PM; \$5-12; res. req. 310.785.1809.

14, Saturday

Old Pasadena Walking Tour. Given by Pasadena Heritage. Meet at Arroyo Seco Building, 117 E. Colorado; 9-11:30AM; \$5; res. req. 818.793.0617.

14, Saturday

Downtown Los Angeles Walking Tours. Tours of Biltmore Hotel, Art Deco, Marble Masterpieces, Pershing Square Landmarks, Broadway Theaters. L.A. Conservancy; 10AM-Noon; \$5. 213.623.2489.

14, Saturday

Ennis-Brown House Tours. Frank Lloyd Wright's 1924 textile-block concrete house. Trust for Preservation of Cultural Heritage and Friends of the Ennis-Brown House, 2655 Glendower Ave., LA; one-hour tours scheduled 11:30AM-3:30PM; \$5-10; res. req. 213.668.0234.

15, Sunday

35th Annual Sandcastle Contest. Enter in teams or solo to win cash prizes; register by September 3rd. AIA/OC, Big Corona State Beach; 10AM-3PM; \$15-50. 714.729.4400.

16, Monday

VHS 10th Anniversary. Presentation with Kendrick Kinney, grandson of Abbot Kinney. Venice Historical Society; Venice Beach House, 16 30th Ave., Venice; 7PM; free; res. req. 310.676.0273.

18, Wednesday

The Diversity of Collecting Art Glass. The Penny-Pinchers Guide to Art Collecting. Pacific Design Center, Signatures in Acrivue, 8687 Melrose Ave., Suite B137, LA; 3:30PM; free. 310.659.9898.

18, Wednesday

St. Paul the Apostle Catholic Church. Tour of church and meeting of the Interfaith Forum on Religion, Art and Architecture. AIA/OC; Chino Hills; 4PM. 714.675.1122, Terry Jacobson.

18, Wednesday

Collaborations: Dance and Design. Lecture with choreographer Jacques Heim and set designer Daniel Wheeler. SCI-Arc, 5454 Beethoven St., LA; 7:30 PM; free. 310.574.1123.

19, Thursday

Taking the Fear Out of Negotiating Fees in Professional Agreements. Full-day conference by American Public Works Association. Carson Civic Center, 801 E. Carson St., Carson; 8:30AM-3PM; \$75-90. 714.722.1455, Norm.

21, Saturday

Fundamentals of Interior Design. Basic course with Dollie Chapman. Santa Monica College, 1900 Pico Blvd., SM; 9AM-Noon; \$45; res. req. 310.452.9214.

21, Saturday

Historic Downtown Long Beach. Architectural walking tour sponsored by Long Beach Heritage Coalition. Historical Society of Long Beach, 418 Pine Ave., LB; 10AM; \$3; res. req. 310.493.7019.

21, Saturday

Downtown Los Angeles Walking Tours. Tours of Palaces of Finance, Union Station, Art Deco, Broadway Theaters, Pershing Square. L.A. Conservancy; 10AM-Noon; \$5. 213.623.2489.

21, Saturday

Volunteer Open House. Training program for volunteers. Pasadena Historical Museum, 470 W. Walnut St.; 10AM. 818.577.1660, Ardis Willwerth.

21, Saturday

Echo Park History Day. Tours, seminars and exhibitions on Elysian Park. Echo Park Historical Society, Barlow Hospital, William's Hall, 2000 Stadium Way, Elysian Park, LA; 10AM-4PM; free. 213.250.0573.

21, Saturday

Adobe Ranch House Restoration. Public dedication and tours of restored Adobe Ranch House, Guajome Regional Park, Greater San Luis Rey of North County. San Diego Parks and Recreation; 11AM. 619.694.3030.

21, Saturday

The Shade Garden. Discussion with landscape architect Barbara Koenig. The Arboretum of Los Angeles County, 301 N. Baldwin Ave., Arcadia; 1-3PM; \$10-13; res. req. 818.447.8207.

21, Saturday

Greystone Mansion/Upper Beverly Hills. Tour. Neighborhood Place Project; \$10; res. req. 909.982.3225.

21, Saturday

Library Associates Lecture. Program with restaurant designer Barbara Lazaroff of Imaginings Interior Design. Woodbury University, Los Angeles Times Library, 7500 Glenoaks Blvd., Burbank; 4PM; \$10-25; res. req. 818.767.0888.

21-24, Saturday-Tuesday

Taliesin—Entering a New Period. Taliesin Fellows annual meeting with keynote speaker Dr. H. Nicholas Muller II, CEO of Frank Lloyd Wright Foundation. Meeting and tours in San Francisco; fees vary. 310.477.5917.

22, Sunday

Gustav Stickley and Elbert Hubbard: The Arts and Crafts in America. San Diego Historical Society Friends of the Marston House; Museum of San Diego History, 1649 El Prado, SD; 1PM; \$5-8; res. req. 619.280.3579.

22, Sunday

Grandmother's Garden. Talk with May Brawley Hill, author of *Grandmother's Garden: The Old-Fashioned American Garden.* The Huntington, 1151 Oxford Rd., San Marino; 2:30PM; \$47-50. 818.405.2141.

26-28, Thursday-Saturday

8th Annual Envisioning California Conference. Includes talks by Huell Howser and Carolyn See. Center for California Studies, CSU Sacramento; Pasadena Doubletree Hotel; \$100; res. req. 916.278.6906.

28, Saturday

SAH/SCC EVENT WPA/PWA in LA. Tour of sites in LA, Whittier and Long Beach. \$50 for members; \$65 for non-members. See page 3 for details. 800.9SAHSCC

28, Saturday

Historic East Village. Walking tour, with Long Beach Heritage Coalition. Historical Society of Long Beach, 418 Pine Ave., LB; 10AM; \$3; res. req. 310.493.7019.

28, Saturday

Downtown Los Angeles Walking Tours. City Hall, Broadway Theaters, Art Deco, Mecca for Merchants, Pershing Square Landmarks. L.A. Conservancy; 10AM-Noon; \$5. 213.623.2489.

28, Saturday

Historic Furniture: Its Condition, Conservation and Repair. Talk and demo with furniture restorer Patrick Edwards. SDHS Decorative Arts Council, Museum of San Diego History, 1649 El Prado, SD; 10AM; \$25-30; res. req. 619.232.6203.

28, Saturday

Downtown Public Art Tour. Walking and metro tour with Gayle Gale. Santa Monica College; meet at MOCA, 250 S. Grand Ave., LA; 10:30AM-4:30PM; \$25; res. req. 310.452.9214.

30, Monday

Art Deco Call for Papers Deadline. Submit papers for Fourth World Congress on Art Deco themed "L.A., Art Deco and the Movies," to be held in LA May 21-26, 1997. 310.659.DECO.

october

2, Wednesday

Philip Johnson's Politics and Cynical Survival. Lecture by architectural historian Kazys Varnelis, instructor at SCI-Arc. Southern California Institute of Architecture, 5454 Beethoven St., LA; 7:30 PM; free. 310.574.1123.

2, Wednesday

Hot off the Press. Lecture with Carolyn Kozo Cole and Kathy Kobayashi, authors of *Shades of LA: Pictures From Ethnic Family Albums*. Los Angeles Public Library, Central Library, 630 W. Fifth St., LA; 7:30 PM; free. 213.228.7040.

3, Thursday

Pasadena Art Walk. Self-guided, Old Town open house with special events, artists, refreshments. The Armory Center for the Arts; 6-10PM. 818.792.5101.

3, 10, 17, 24, Thursday

Kitchen + Bath Month. Showroom programs, keynote lectures and celebrity chefs. Pacific Design Center, 8687 Melrose Ave., LA. 310.657.0800.

5, Saturday

Downtown Los Angeles Walking Tours. Tours of Art Deco, Broadway Theaters, Little Tokyo, Pershing Square Landmarks, Terra Cotta. L.A. Conservancy; 10AM-Noon; \$5. 213.623.2489.

5, Saturday

Town and Gown. Tour of Pepperdine University, Adamson Estate. Neighborhood Place Project; 1-4PM; \$10; res. req. 909.982.3225.

5, Saturday

AIA/OC Home Tour. AIA/OC, 3200 Park Center, Costa Mesa; 714.557.7796

5, 12, 19, 26, Saturday

Googie Tours. Choice of three-to-five-hour tours: The San Gabriel Valley, Behind the Orange Curtain, Coffee Shop Modern & More, Cocktails 'N' Coffee Shops, given by preservationist John English. \$35; res. req. 213.980.3480.

5, 12, 19, 26, Saturday

Turistorica Walking Tours. Given by Architectural Foundation of Santa Barbara and Citizens Planning Foundation of Santa Barbara. Meet at City Hall Steps, De La Guerra Plaza, SB; 10AM-Noon; \$5. 805.965.3021 or 805.965.6307.

7, Monday

Harvest Moon Lighting. Program on landscape lighting. Designers Lighting Forum; 6PM product display; 7PM program. \$5-10. 310.476.9200, Barbara Hirsch.

8, Tuesday

SAH/SCC EVENT
Life in the City. Book discussion of *Las Vegas: Guide to Contemporary Architecture*, with authors Frances Anderton and John Chase. Urban Inversion, 8246 Santa Monica Blvd., West Hollywood; 7PM; \$5; res. req. See page 7 for details. 213.654.8285.

9, Wednesday

New Design From Puerto Rico. Lecture with architect and historian Jorge Rigau, AIA, partner at Rigau y Penabad, Arquitectos, San Juan, Puerto Rico. Southern California Institute of Architecture, 5454 Beethoven St., LA; 7:30 PM; free. 310.574.1123.

12, Saturday

Old Pasadena Walking Tour. Given by Pasadena Heritage. Meet at Arroyo Seco Building, 117 E Colorado; 9-11:30AM; \$5; res. req. 818.793.0617.

12, Saturday

Book Structures. Hands-on workshop with Betz Salmont. Santa Monica College, 1900 Pico Blvd., SM; 10AM-3PM; \$45; res. req. 310.452.9214.

12, Saturday

Angelus-Rosedale Cemetery Tour. Tour of cemetery with actors as famous deceased. West Adams Heritage Association, 1676 W. 29th St., LA; 90-minute tours available every half hour, 9AM-1PM; \$8-10; res. req. 213.731.7514.

12, Saturday

Beginning Decorative Furniture Painting. Workshop with Carole Becker Goldman. Santa Monica College, 1900 Pico Blvd., SM; 9AM-2PM; \$50; res. req. 310.452.9214.

12, Saturday

Downtown Los Angeles Walking Tours. Tours of Biltmore Hotel, Marble Masterpieces, Art Deco, Broadway Theaters, Pershing Square Landmarks. L.A. Conservancy; 10AM-Noon; \$5. 213.623.2489.

12, Saturday

Introduction to Feng Shui—The Art of Placement. Workshop with Adele D. Trebil. Santa Monica College, 1900 Pico Blvd., SM; 10AM-1:30PM; \$40; res. req. 310.452.9214.

12-13, Saturday-Sunday

Malibu Tile and Floral Festival. Tile tours and programs. Malibu Lagoon Museum, 23200 Pacific Coast Hwy., Malibu. 310.457.8142.

13, Sunday

Gallery Talk: Hot Rods and Customs. Tour of exhibition with car designers Gene Winfield and John D'Agostino. Oakland Museum of California, 1000 Oak St., Oakland; 2PM; \$3-5. 510.238.2200.

13, 20, Sunday

Asian Landscape Designs. Workshop with Charlotte Chen. Santa Monica College, 1900 Pico Blvd., SM; 9AM-2PM; \$45; res. req. 310.452.9214.

14, Monday

Catalina Tile Tour. Tour hosted by tile expert and author Lee Rosenthal. Tile Heritage Foundation; \$100; res. req. 707.431.8453.

14-15, Monday-Tuesday

Tile Conservation Workshop. Hands-on workshop to clean and catalogue 16th century Syrian tiles at Santa Barbara Museum of Natural History. Tile Heritage Foundation; \$50; res. req. 707.431.8453.

15, Tuesday

Public Art Tile. Workshop/tour with artist Blair Looker. Tile Heritage Foundation; 9AM-12:30PM; \$50; res. req. 707.431.8453.

15, Tuesday

Multi-Dimensional Ceramics. Workshop with ceramic artist Michelle Griffoul. Tile Heritage Foundation; 9AM-1PM; \$50; res. req. 707.431.8453.

16, Wednesday

Architecture in Cyberspace. Lecture with architect Marcos Novak, visiting professor at UCLA. Southern California Institute of Architecture, 5454 Beethoven St., LA; 7:30 PM; free. 310.574.1123.

16-19, Wednesday-Saturday

Tiles of Santa Barbara: Exploring A Mediterranean Fantasy. Symposia include *Tiles on the Web*; *Santa Barbara Today and Yesterday*; *Ceramic Art Along El Camino Real*; *Evolution of Color & Style in California Tiles*; *Spanish Reflection in the New World*; *Moroccan Zellige Tiles*; *World Wall for Peace*; *Tile of the California Arts & Crafts Movement*; *Funky Fantasy Fountain*, plus others. Also featuring tours, and tile auction and sale. Co-sponsored by Santa Barbara Historical Museum, Santa Barbara Museum of Natural History, Santa Barbara Museum of Art, Tile Heritage Foundation. Registration fees vary. 707.431.8453.

17, Thursday

Southern California Coalition of Heritage Commissions and Organizations Meeting. 7:30PM. 714.521.6449.

17, Thursday

Masters of Architecture. Lecture by Bernard Tschumi, FAIA, sponsored by AIA/LA and LACMA. Los Angeles County Museum of Art, Bing Theater, 5905 Wilshire Blvd., LA; 6:30PM; \$5-12; res. req. 310.785.1809.

17-20, Thursday-Sunday

The State of History in California. California Council for the Promotion of History Annual Meeting with keynote speaker Kevin Starr; tours, performances and sessions on *Public History in the Central Valley*; *Upton Sinclair and California Utopianism*; *History and the Internet*; *The New California History*, plus others. Hyatt Regency Hotel, Sacramento. 916.757.2521, Rand Herbert.

19, Saturday

Downtown Los Angeles Walking Tours. Tours of Palaces of Finance, Union Station, Art Deco, Broadway Theaters, Pershing Square Landmarks. L.A. Conservancy; 10AM-Noon; \$5. 213.623.2489.

19, Saturday

Historic Downtown Long Beach. Architectural walking tour featuring the Breakers Art Deco "SkyRoom," sponsored by Long Beach Heritage Coalition. Historical Society of Long Beach, 418 Pine Ave., LB; 10AM; \$3; res. req. 310.493.7019.

19, Saturday

Antique and Contemporary Tile Sale. Tile makers, artists and dealers display rare, historic and new tiles for sale. Tile Heritage Foundation; Santa Barbara Historical Museum; 10AM-5PM; \$5. 707.431.8453.

19, Saturday

Los Feliz District. Tour. Neighborhood Place Project; \$10; res. req. 909.982.3225.

20, Sunday

The California Craftsman Style. The Arts and Crafts Movement lecture series sponsored by San Diego Historical Society Friends of the Marston House. Museum of San Diego History, Thornton Theatre, 1649 El Prado, SD; 1PM; \$5-8; res. req. 619.280.3579.

20, Sunday

Gallery Talk: Hot Rods and Customs. Tour of exhibition with car designers Bob and Dick Pierson. Oakland Museum of California, 1000 Oak St., Oakland; 2PM; \$3-5. 510.238.2200.

21, Monday

Gala Garden Party. Opening benefit for LA Garden Show with garden events, dinner, dancing. The Arboretum of Los Angeles County, 301 N. Baldwin Ave., Arcadia; 3-10PM; \$100; res. req. 818.447.8207.

21, Monday

The Future of the Past: Archaeology, Ideology and Politics in the New Middle East. Lecture with Neil Asher Silberman. Skirball Cultural Center, 2701 N. Sepulveda Blvd., LA; 8:15PM; res. req. 310.440.4666.

23, Wednesday

Gardens and Urban Landscapes. Lecture by landscape architect Adriaan Geuze, director and chief designer of West 8 Landscape Architects, Rotterdam. Southern California Institute of Architecture, 5454 Beethoven St., LA; 7:30 PM; free. 310.574.1123.

23-27, Wednesday-Sunday

Gardens of Our World—The European Influence. 1996 Los Angeles Garden Show with style gardens, demonstrations, exhibitions, lectures and seminars. The Arboretum of Los Angeles County, 301 N. Baldwin Ave., Arcadia; 9AM-5PM; \$7-8. 818.447.8207.

24, Thursday

AWA Installation Dinner. Officers installation dinner celebration and program with Association for Women in Architecture. 213.389.6490.

26, Saturday

The Material Culture of Southern and Baja California, 1769-1950. Lectures and papers. SDHS Decorative Arts Council, Manchester Executive Conference Center, University of San Diego; 9AM-4PM; \$45-50; res. req. 619.232.6203, ext. 115.

26, Saturday

Home Remodeling—Dealing With Professionals, Avoiding Litigation. Workshop with Herb Katz, AIA. Santa Monica College, 1900 Pico Blvd., SM; 9AM-5PM; \$50; res. req. 310.452.9214.

26, Saturday

Historic East Village. Art and architecture walking tour, with Long Beach Heritage Coalition. Historical Society of Long Beach, 418 Pine Ave., LB; 10AM; \$3; res. req. 310.493.7019.

26, Saturday

Downtown Los Angeles Walking Tours. City Hall, Art Deco, Mecca for Merchants, Broadway Theaters, Pershing Square. L.A. Conservancy; 10AM-Noon; \$5. 213.623.2489.

26, Saturday

Downtown Metro Art Tour. Red Line metro tour with Gayle Gale. Santa Monica College; meet at Union Station, Main Entrance, 800 N. Alameda St., LA; 10:30AM-4:30PM; \$25; res. req. 310.452.9214.

26, Saturday

North San Diego County's Vista. Tour. Neighborhood Place Project; \$10; res. req. 909.982.3225.

27, Sunday

SAH/SCC EVENT
SAH/SCC Annual Meeting. Keynote speaker Robert Winter, Members free; non-member guests \$10. Meeting held at South Pasadena Junior High School. See page 1 for details. 800.9SAHSCC

27, Sunday

Historic Halloween Party. Celebration and tours supporting preservation of Grier Musser historical house. Grier Musser Museum, 403 S. Bonnie, LA; 1-4PM; \$6. 213.413.1814.

27, Sunday

Collecting William Morris. Lecture with UC Berkeley art history professor Margaretta Lovel, curator of exhibition *Celebrating William Morris*. The Huntington, 1151 Oxford Rd., San Marino; 2:30PM; \$47-50. 818.405.2141.

30, Wednesday

Multi-Disciplinary Design. Lecture by architects Amy Landesberg and Lisa J. Quatrelle, co-principals of LIQUID, Inc., Atlanta. Southern California Institute of Architecture, 5454 Beethoven St., LA; 7:30PM; free. 310.574.1123.



The allegory of Santa Barbara in tile, from 111e Heritage Foundation's events, October 13-16. (Photo: William B. Dewey; courtesy of Casa del Herrero Foundation)

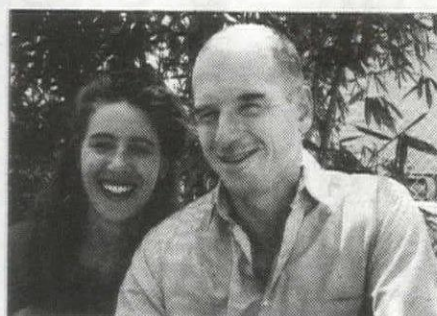
LAS VEGAS! LAS VEGAS! LAS VEGAS!

LIFE IN THE CITY

Join the irrepressibly charming Frances Anderton and John Chase, authors of the new book *Las Vegas: Guide to Contemporary Architecture*, when they share their observations of this larger-than-life city on October 8th at 7PM at Urban Inversion. Both Frances and John are sharp, witty and irreverent observers of the urban and cultural landscape, and they look forward to a casual, informal evening of swapping stories about his mega-ultra-meta entertainment center. The reading, continuing SAH/SCC's "Life in the City" series of book readings by their authors, promises to be an excellent introduction to those going on the Viva Las Vegas tour in November.

The new guide, published by Ellipsis Press, is the first guide to architecture in Las Vegas. It describes the casinos, hotels and signage of this flamboyant gambling mecca, as well as examines the work by architects such as Antoine Predock and Michael Graves. Anderton is a freelance writer and consultant who has written for publications such as *Metropolis*, *Architecture* and *Buzz*, and has held editorial positions at the London-based *The Architectural Review*, and at the local *LA Architect*. Her most recent project is acting as consulting editor for a guide book to Los Angeles. Chase is an urban designer for the City of West Hollywood and a principal in the architecture firm of Chase & Burnett, and is an instructor at Southern California Institute of Architecture. He is presently writing on the subjective experience of architecture in a personal essay format.

It was not known at press-time if the Las Vegas book will be available for purchase and signings at the event, which will, nevertheless preview the publication. If it is, as always, Urban Inversion will donate 30 percent of the proceeds for the featured books sold to the chapter. The store is located at 8246 Santa Monica Blvd. in West Hollywood. The presentation starts at 7PM, and there is a \$5 donation. For reservations and information call 213.654.8285.



The witty and urbane Anderton and Chase.

VIVA LAS VEGAS!

Learn more from Las Vegas than you ever expected on this weekend expedition into the city's past, present, and future. Join us, November 9th-10th, for a fascinating look at this strange, and possibly prophetic construct of American urbanism of the late 20th century. SAH/SCC Board Members Jeff Samudio and Grant Taylor will guide you on an historic look at this most American of cities, as well as offer views to the future of Vegas through the work of contemporary architects.

The tour will begin with a look at the remnants of the original Las Vegas clubs and casinos in Downtown. We'll see a neon graveyard, and the last remains of the strip's first great casinos. Among the historic sites the tour will visit is the Moulin Rouge, which was recently placed on the National Register of Historic Places. We will also go behind the scenes of one of the new mega casino-hotels to glimpse the future of entertainment in this unique city. No trip to Las Vegas would be complete without an evening tour of the illuminated city in all its glitzy neon, and sometimes crass, expressions. Included will be the new Fremont Street project by Jon Jerde.

From the strip, the focus will shift to the incredible infrastructure that made this city in the desert possible. Sites include Clark County Government Center by CW Fentress JH Bradburn, Whitney Library by Holmes Sabatini Associated Architects, Nevada Department of Motor Vehicles and Public Safety by HSA Architects, West Charleston Library by Welles-Pugsley Architects, and the Clark County Library by Michael Graves and JMA Architects. We will also visit the massive WPA project of Boulder Dam, with architectural details designed by Gordon Kaufman, and tour the city created to build it, Boulder City, before returning to LA.

Accommodations will be at a 1950s hotel. Tour package is \$380 per person, double occupancy; \$465 for single occupancy (non-members add \$35). A deposit of \$100 is due with registration. For more information and registration forms, call Sundance Meetings & Incentives at 800.424.3434 or 714.752.5456, ext. 122. For details on the tour, call Jeff Samudio at 213.962.4585.



Clark County Library in Las Vegas by Michael Graves and JMA Architects.

MARK YOUR CALENDAR FOR JANUARY 1997 TOURS TO MELBOURNE AND MONTEREY

MELBOURNE: JANUARY 2ND-10TH

Defined by dramatic economic ups and downs, Melbourne is the jewel and heart of Australia's culture and commerce. Its broad boulevards and impressive park lands are an ideal setting to understand the architectural development of a continent. Noted as one of the world's great Victorian Cities, Melbourne's charm is hard to resist. Join noted architect, historian and heritage planner Timothy Hubbard, and SAH/SCC Board Member Jeff Samudio, as they lead you on a tour to discover the development of Australia from January 2nd to 10th.

Accommodations are in the Newman College, designed Walter Burley Griffin and Marion Mahoney Griffin, at the University of Melbourne, within walking distance of one of the world's finest transit systems and bustling urban core, or at the Adelphi Hotel. Total package is \$2,050 for Newman College accommodations, and \$2,300 per person at the Adelphi, double occupancy. There are only 35 spaces, so \$500 deposits are due with registration. For more travel information and registration forms, call Sundance Meetings & Incentives at 800.424.3434 or 714.752.5456, ext. 122. For details on the tour, call Jeff Samudio at 213.962.4585.

MONTEREY: JANUARY 24TH-26TH

The Monterey Peninsula is a unique microcosm of the evolution of western European architectural traditions from the 18th century to the present. Tour the peninsula with Richard N. Janick and Kent Seavey, instructors at Monterey Peninsula College, during the weekend of January 24th to 26th.

Both public and private buildings will be featured, highlighting the work of architects such as Charles W. Moore, Julia Morgan, Frank Lloyd Wright and William Wurster. Great examples of the Spanish-influenced "Monterey Style" architecture will be explored. Famed sites of Asilomar, Cannery Row and Carmel Mission Ranch (owned and restored by Clint Eastwood) will not be missed!

Accommodations are at the Hotel Pacific, an award-winning property in the heart of Monterey. Total package cost is \$350 per person, double occupancy; \$200 per person for tour only (non-members add \$35). Deposit of \$200 is due with registration. For more information and registration forms, call Sundance Meetings & Incentives at 800.424.3434 or 714.752.5456, ext. 122. For details on the tour, call Jeff Samudio at 213.962.4585.

SAH/SCC EVENTS 7

California Art Auction

Important works by
historical and contemporary artists.



**Saturday
November 9, 1996
1:00 pm**

at the

Santa Barbara Historical Museum
Santa Barbara, California

For preview information and
artwork listing, contact the
Historical Museum that
the auction benefits:

Telephone (805) 966-1601
or FAX (805) 966-1603

Help Us Find These Missing Members

SAH/SCC has no current address
for the following members:

Lynn Marie Bryant
James & Grace Kelley
Robert Kneisel
Ann Mindler
Leslie Mitchner

If you're in contact with one or
more of these folks, please ask
them to call 800.9SAHSCC with
their correct addresses so they
won't miss SAH/SCC News!

To advertise in
SAH/SCC News,
call 310.247.1099
for information.

SAH/SCC ORDER FORM

LOS ANGELES EVENTS

WPA/PWA in LA Tour — September 28th

_____ member reservation(s) at \$50 each \$ _____
_____ non-member reservation(s) at \$65 each \$ _____

Life in the City: Las Vegas — October 8th

_____ reservation(s) at \$5 each \$ _____

SAH/SCC Annual Meeting — October 27th

_____ reservation(s) free for SAH/SCC members
_____ reservation(s) for guests at \$10 each \$ _____
_____ reservation(s) for dinner at \$100 each \$ _____

Kevin Starr Lecture — November 18th

_____ member reservation(s) at \$10 each \$ _____
_____ non-member reservation(s) at \$15 each \$ _____

Dr. David Gebhard Review Fund

\$ _____ donation in the name of _____

Dr. Robert Pierson Cultural History Fund

\$ _____ donation in the name of _____

SAH/SCC Membership

_____ at \$ _____ each \$ _____
(membership category)

TOTAL: \$ _____

Name _____
Street Address _____
City _____
State _____ Zip _____
Daytime Phone _____
Evening Phone _____

Make checks payable to SAH/SCC.

Send this form to: SAH/SCC
P.O. Box 92224
Pasadena, CA 91109-2224

Questions? Call 800.9SAHSCC.

TRAVEL TOURS

Las Vegas Tour — November 9-10, 1996

_____ deposit(s) at \$100 each \$ _____

Melbourne Tour — January 2-10, 1997

_____ deposit(s) at \$500 each \$ _____

Monterey Tour — January 24-26, 1997

_____ deposit(s) at \$200 each \$ _____

TOTAL: \$ _____

Name _____
Street Address _____
City _____
State _____ Zip _____
Daytime Phone _____
Evening Phone _____

Fax this form to: 714.833.2769
Send this form to: Sundance Meetings & Incentives
Attn: Kate Holland
19800 MacArthur Blvd., Suite 100
Irvine, CA 92612

Questions? Call 800.424.3434 or 714.752.5456, ext. 122

Tiles of Santa Barbara:

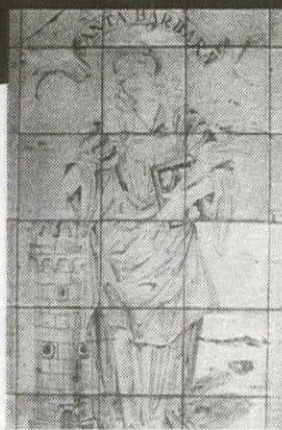
Exploring a Mediterranean Fantasy

A 4-day symposium featuring lectures, tours and
workshops on the exotic tiles that adorn this
picturesque seaside community.



October 16-19, 1996
Santa Barbara, California

For a registration brochure, contact Tile Heritage
Foundation, P.O. Box 1850, Healdsburg, CA 95448.
Phone 707 431-8453 or fax 707 431-8455.



Courtesy Casa del Herrero Foundation.

BECOME A MEMBER OF SAH/SCC

SAH/SCC Membership Benefits:

- Subscription to bi-monthly SAH/SCC News
- Member prices for SAH/SCC events
- 20% discount at the Gamble House shop
- Annual The Dr. David Gebhard Review
- Discounts on selected items at Urban Inversions
- Volunteer activities
- Opportunity to arrange and coordinate events
- Annual meeting
- Life Members and Friends are listed in each issue of SAH/SCC News

Membership Categories:

- _____ \$35 Individual Member (\$15 for each addition name at same address)
- _____ \$20 Student (with copy of current I.D.)
- _____ \$100 Patron (up to 2 names at same address)
- _____ \$500 Life Member (one-time contribution)
- _____ \$750 Individual Event Sponsor
- _____ \$1500 Corporate Event Sponsor

GET YOUR SAH/SCC RAFFLE TICKETS

Enter the SAH/SCC drawing for opportunities to win tours, books, museum
memberships, and other great items. The drawing takes place at the Annual
Meeting, October 27th. If you can't come to the meeting, you can still enter the
drawing by sending in this form, along with a check for \$2 for each ticket. Enter by
October 1st.

Name _____
Daytime Phone _____ Evening Phone _____

Mail to SAH/SCC, P.O. Box 92224, Pasadena, CA 91109.
For complete list of drawing items, send a self-addressed, stamped envelope to the
above address, or call 800.9SAHSCC.