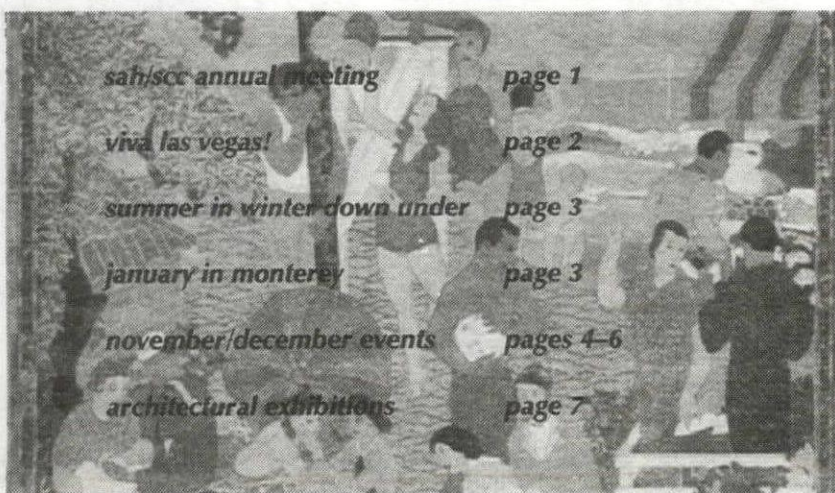


SAH/SCC

SOCIETY OF ARCHITECTURAL HISTORIANS  
SOUTHERN CALIFORNIA CHAPTER

post office box 92224, pasadena, ca 91109-2224 800.9SAHSCC  
http://www.ccsf.caltech.edu/~mac/sah/index.htm

NEWS 6  
1996  
november/december 1996



sah/scc annual meeting page 1  
viva las vegas! page 2  
summer in winter down under page 3  
january in monterey page 3  
november/december events pages 4-6  
architectural exhibitions page 7

Detail of the "Recreation" mural from the 1932 Long Beach Auditorium.

U.S. Postage  
FIRST CLASS MAIL  
PAID  
Pasadena, CA  
Permit No. 740

## SAH/SCC MEMBERS CELEBRATION

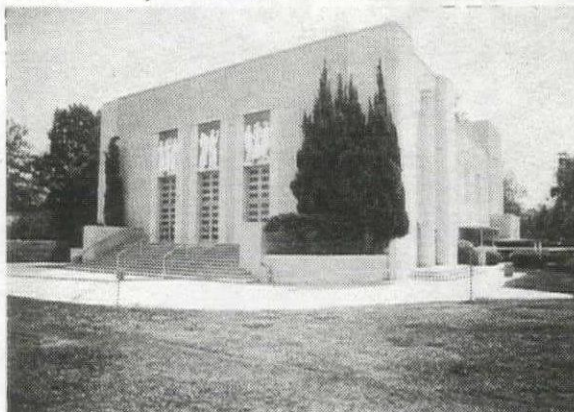
SUNDAY, OCTOBER 27TH, 3PM-6PM, FREE TO ALL SAH/SCC MEMBERS  
SOUTH PASADENA HIGH SCHOOL, 1401 FREMONT AVE., SOUTH PASADENA

Just what was it about Southern California that made it such a desirable spot for so much work supported by the Federal public works projects during the Depression? Why were some projects supported, and others weren't? Who did all those great murals around town? And who are these cool people I see at all the SAH/SCC meetings, events and tours? Discover it all at the SAH/SCC Annual Members Celebration on Sunday, October 27th, at the South Pasadena High School Auditorium, 1401 Fremont Avenue, South Pasadena, from 3PM to 6PM.

Keynoter Robert W. Winter (who chose the WPA-era high school for the meeting, as well as the post-meeting dinner site—see box, below) will be joined by fellow historians Orville C. Clarke, Jr., and Mitzi March Mogul in presenting aspects of federal works programs in the 1930s.

Admission to the SAH/SCC Annual Members Celebration is a privilege of your annual membership. We welcome—and encourage—guests at a fee of \$10. Or, better yet, they can become full members on the spot!

Starting at 3PM will be a relaxing and fun reception to meet new members and see old friends. At that time, as well, you can bid on silent auction items and buy raffle tickets (only \$2 each) to help raise funds for the chapter. The auction and raffle feature books, tickets, museum memberships, tours, art and other items from Craft and Folk Art Museum, L.A. Conservancy, Los Angeles Master Chorale, L.A. Opera, Los Angeles Philharmonic, Richard Levy Architectural



South Pasadena High School, 1401 Fremont Ave., South Pasadena.

Photography, MOCA, Norton Simon Museum, Skank World, Southwest Museum, and UCLA/ Hammer Museum.

At 3:30PM, a brief business meeting will review the chapter's activities in the past year, and confirm the slate of new board members, passing the baton from out-going president Jeff Samudio to in-coming president John Berley.

Then, it's on to the presentations, all of which will be included in the newly re-named *The Dr. David Gebhard Review*, which will be distributed to members at the meeting. (Members who aren't able to attend the meeting, may receive *The Review* by sending a check for \$3 to cover postage.)

*"The New Deal and the Arts of the Thirties"* by Dr. Winter looks at president Roosevelt's pragmatic attitude in his encouragement of the arts and architecture, contrasting the works produced by the enthusiastic Works Progress Administration (WPA) supporting visual and dramatic artists, and the more conservative Public Works Administration (PWA) funding architects.

*"Why Los Angeles Was the Recipient of So Many PWA/WPA Projects"* by Ms. Mogul will investigate the social, economic and political aspects of how Los Angeles received a multitude of projects, given that its economic need was not as severe as other cities'.

*"The Federal Art Projects: A Partnership of the Arts"* by Mr. Clarke will give an overview of four major federal art projects, concentrating on

their purpose as art programs, as opposed to work programs.

After the three views of the federal arts and architecture relief programs, a special, post-meeting dinner with Bob Winter will take place at the Raymond House in Pasadena. A place at the table is yours for a (tax-deductible) \$100 donation to SAH/SCC. Call Rebecca Kahn at 310.479.7936 for specifics on the dinner.

For more information on the meeting, call 800.9SAHSCC.

### WHAT

SAH/SCC Annual Members Celebration

### WHEN

Sunday October 27th, 3-6PM

### WHO

All SAH/SCC members free; guests \$10; new members \$35

### WHERE

South Pasadena High School Auditorium  
1401 Fremont Avenue  
(between Lyndon and Rollin)  
South Pasadena

### HOW

Freeway #110  
Exit at Fair Oaks Avenue  
Thomas Bros. 1996 Grid 595-H3

### WHAT

Reception, Silent Auction, Raffle (\$2 per ticket), State of Society Meeting, Paper Presentations, Keynote by Robert Winter

### THEN WHAT

Private Dinner With Bob Winter  
\$100 donation to SAH/SCC  
The Raymond House Restaurant  
Info: 310.479.7936, Rebecca Kahn

### DINNER WITH BOB



Join Robert Winter at the Raymond House restaurant for an intimate dinner with this eminent historian and other SAH/SCC members. It's limited seating, so reserve a spot with a \$100 donation to SAH/SCC. For info, call Rebecca Kahn at 310.479.7936.



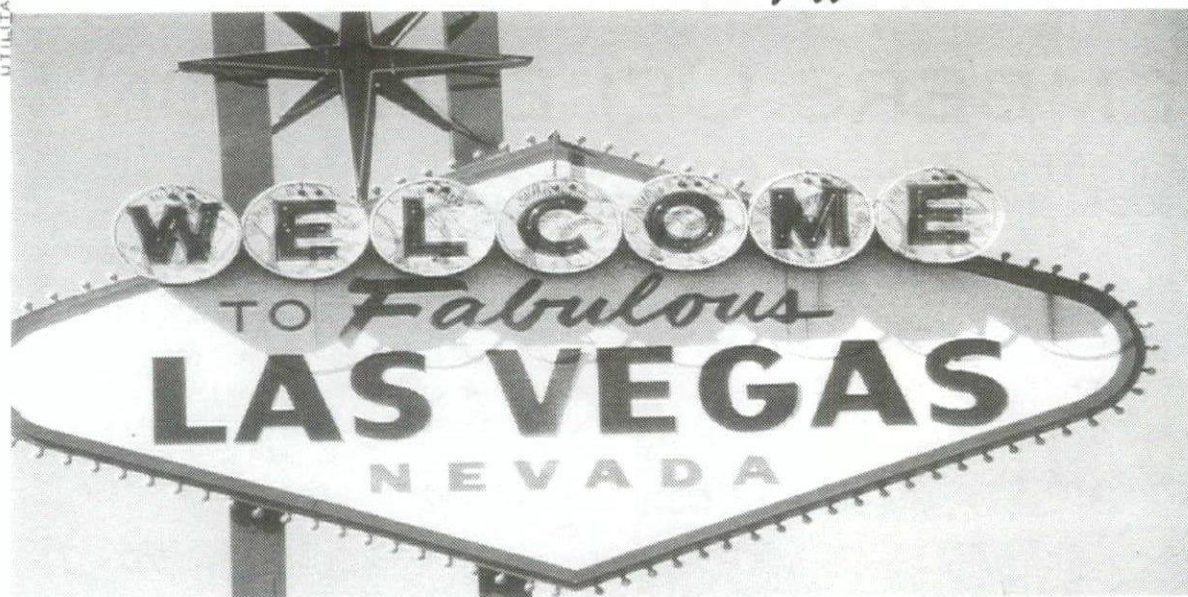
## Message from the President:

The annual meeting of SAH/SCC will convene on October 27th (see page 1), allowing members to meet the executive board and discuss the past year's activities, and those planned for the future. This opportunity to mingle with and meet the volunteers of the organization is essential to nurturing our common goal of recognizing the importance of our built environment. I have been informing you throughout the past year and a half as president of the significant changes the organization has gone through. This would not have been possible if not for the long hours of volunteer time put in by the executive board, and by you, the members, who helped to coordinate events, and offered services and advice. For this I am grateful to the entire Society for making my job as president during this trying time more pleasant and constructive.

I will be stepping down from the board after three years and urge you to support John Berley as your new president. I hope him the best in the coming year. I will not be leaving the organization completely, as I will continue as chair of the Advisory Board for the Society as envisioned in the Society's bylaws. The Advisory Board will comprise former board members and advisors that the working executive board can call upon for help and advice. It is hoped that the Advisory Board will act as a link to the organization's past for contacts, and as an aid in organizing future events and in better managing the Society.

Again, it has been my pleasure and honor serving as organizational president, and I look forward to working with the new board to continue the changes that have been implemented in the past year. Good luck!

— Jeff Samudio



(Photo: courtesy Las Vegas Convention and Visitors Authority)

## LAST CHANCE FOR LAS VEGAS! WEEKEND TRIP, NOVEMBER 8TH-10TH

It's your last chance to get a remaining space on the bus to the city of dreams! Explore Las Vegas on this weekend expedition into the city's past, present, and future. Join us, November 8th-10th, for a fascinating look at this strange, and possibly prophetic construct of American urbanism of the late 20th century. SAH/SCC Board Members Jeff Samudio and Grant Taylor, along with Alan Hess, author of *Viva Las Vegas*, and John Chase and Frances Anderton, authors of *Las Vegas: A Guide to Contemporary Architecture*, will guide you on an historic look at this most American of cities, as well as offer views to the future of Vegas through the work of contemporary architects.

The tour will begin with a look at the remnants of the original Las Vegas clubs and casinos in Downtown. We'll see a neon graveyard, and the last remains of the strip's first great casinos. Among the historic sites the tour will visit is the Moulin Rouge, which was recently placed on the National Register of Historic Places. We will also go behind the scenes of one of the new mega casino-hotels to glimpse the future of entertainment in this unique city. No trip to Las Vegas would be complete without an evening

tour of the illuminated city in all its glitzy neon, and sometimes crass, expressions. Included will be the new Fremont Street project by Jon Jerde.

From the strip, the focus will shift to the incredible infrastructure that made this city in the desert possible. Sites include Clark County Government Center by CW Fentress JH Bradburn, Whitney Library by Holmes Sabatini Associated Architects, Nevada Department of Motor Vehicles and Public Safety by HSA Architects, West Charleston Library by Welles-Pugsley Architects, and the Clark County Library by Michael Graves and JMA Architects. We will also visit the massive WPA project of Boulder Dam, with architectural details designed by Gordon Kaufman, and tour Boulder City before returning to LA.

Accommodations will be at a 1950s hotel. Tour package is \$380 per person, double occupancy; \$465 for single occupancy (non-members add \$35). A deposit of \$100 is due with registration. For more information and registration forms, call Sundance Meetings & Incentives at 800.424.3434 or 714.752.5456, ext. 129. For details on the tour, call Jeff Samudio at 213.962.4585.

UTILITAS FIRMITAS VENUSTAS UTILITAS FIRMITAS VENUSTAS  
UTILITAS FIRMITAS VENUSTAS UTILITAS FIRMITAS VENUSTAS  
UTILITAS FIRMITAS VENUSTAS UTILITAS FIRMITAS VENUSTAS  
UTILITAS FIRMITAS VENUSTAS UTILITAS FIRMITAS VENUSTAS

**SAH/SCC NEWS** is published bi-monthly by the Society of Architectural Historians/Southern California Chapter. Subscription is a benefit of membership.

**Editor:** Julie D. Taylor  
**Newsletter Committee:**  
Barbara Lamprecht; Rebecca Kahn  
**Executive Assistant:** Grace Samudio

Information for the newsletter should be sent three weeks before the issue date.

Issue	Deadline
Jan./Feb. 1997	December 10
March/April 1997	February 10
May/June 1997	April 10
July/August 1997	June 10

Please send all notices of events, exhibitions and news—plus photographs—to the attention of the editor:

Julie D. Taylor, Editor  
SAH/SCC News  
P.O. Box 92224  
Pasadena, CA 91109-2224  
telephone: 310.247.1099  
fax: 310.247.8147  
jtaylorpr@usa.net

### SAH/SCC Board Members

**President:** Jeffrey B. Samudio  
**Vice President:** Rebecca Kahn  
**Treasurer:** John Berley  
**Recording Secretary:** Jennifer Minasian  
**Membership Coordinator:** Rochelle Dynes Mills  
**Preservation Officer:** Grant Taylor  
**Internet Editor:** Barbara Lamprecht  
818.794.5878; mac@ccsf.caltech.edu  
**Publicity Coordinator:** Alison Cotter  
**Members at Large:** Merry Ovnick, Nancy Smith, Sian Winship

<http://www.ccsf.caltech.edu/~mac/sah/index.htm>

### Life Members:

Grant Barnes	David C. Mincy
Kathleen Bixler	Le Roy Misuraca
Mary Dutton Boehm	Susan W. Monteith
Bill Bowling	Doug Moreland
Ruth Bowman	Sara G. Muller Chernoff
Lynn Marie Bryant	Betsy Gurchion
Bonnie Burton	Peter A. Nimmer
David G. Cameron	John M. Nisley
Miriam Campbell	Thomas O'Connor
Sam Campbell	Anne Otterson
Robert Jay Chattel	C.E. Parker
Jeffrey Cook	Audree Penton
Stephen P. Danforth	Standish K. Penton
Tim Day	John August Reed
Astrid E. Ellersieck	Claire Rogger
Heinz E. Ellersieck	Richard Cayia Rowe
J. Richard Fare	Jeffrey B. Samudio
Donald R. Ferguson	Walter B. Silber
Gilbert Garcetti	Patricia Simpson
Sukey Garcetti	Cecilia Singer
Dr. & Mrs. Kenneth Geiger	Stanley H. Singer
Gordon Gilliam	Mark Slotkin
Joy Gilliam	Janann Strand
Paul Gleye	Vern Swansen
Stephen Harby	Lorenzo Tedesco
Eugene Hoggatt	Reg Thatcher
Shirley Hoggatt	M. Brian Tichenor
Elaine K. Sewell Jones	Mr. & Mrs. A. Tischler
Stephen A. Kanter	Maggie Valentine
Virginia Ernst Kazor	Harriette von Breton
Marilyn Kellogg	Robert D. Wallace
Theodora Kinder	John Wanke
Charles A. Lagreco	Lori Wanke
Ruthann Lehrer	Patricia A. Warren
Joyce P. Ludmer	Ron Watson
Randell L. Makinson	David R. Weaver
Christy Johnson McAvoy	John Welborne
Elizabeth McMillan	Joanne William
	Robert Winter

### Honorary Member: Robert Pierson

UTILITAS FIRMITAS VENUSTAS UTILITAS FIRMITAS VENUSTAS  
UTILITAS FIRMITAS VENUSTAS UTILITAS FIRMITAS VENUSTAS  
UTILITAS FIRMITAS VENUSTAS UTILITAS FIRMITAS VENUSTAS  
UTILITAS FIRMITAS VENUSTAS UTILITAS FIRMITAS VENUSTAS

An Evening With Kenneth Starr (November 18) has been postponed.  
Please see next issue of SAH/SCC News for new date, or call 800.SAHSCC.



## SAH/SCC MEMBER PROFILE

RICHARD J. LEVY, AIA, APA

Among the auction items to be featured at the SAH/SCC Annual Members Celebration (see page 1) will be the work of noted architectural photographer Richard J. Levy. A member of SAH/SCC since the late 1980s, Richard is both a practicing architect and a specialist in commercial architectural photography. SAH/SCC members might remember his lecture "Architecture of the Lower Columbia River," presented at the Schindler House in 1993, where he shared his knowledge and images of the origins of industry and building types of that unique region.

Richard Levy's specialized practice includes photographing historical architecture in various stages of redevelopment. He has worked to document the restoration of a number of historic sites, including the Los Angeles County Hall of Justice, a Case Study House, and the Glendale Railroad Station.

Most recently, Richard was honored by the Advertising Photographers of America (APA) for his work with the City of Los Angeles Cultural Heritage Board, in conjunction with the HABS/HAER portion of the Library of Congress, to document the second Jewish Bathhouse in Los Angeles. He has also worked and exhibited with the American Institute of Architects/Los Angeles Chapter, DMJM, Cesar Pelli, Dworsky, Morse Diesel International, Sumitomo Construction of America, Peck/Jones Construction, and other notable firms.



"Obviously, we are seeing more and more adaptive re-use projects, as new shell and core work has dwindled," comments Richard. "I am glad to be able to contribute so much toward preserving our architectural history through my commercial photographs and my art." In fact, his photographs have been exhibited and published throughout the United States and in Europe, helping to raise awareness of architectural heritage both here and abroad.

He credits SAH/SCC with providing an avenue to share ideas with like-minded individuals. "SAH/SCC has really helped me to grow both professionally and personally," said Richard. "It has truly been a very valuable and rewarding experience."

Richard is also a member of the National Trust for Historic Preservation and remains active in the Los Angeles Area Chamber of Commerce where he works to promote historical awareness within the building industry, as well as the local government. For further information on his work and services, contact Richard Levy, Architectural Photography and Design, at 213.654.0335.

*This is part of a series of SAH/SCC member profiles written and compiled by Alison Cotter.*

## SUMMER DOWN UNDER

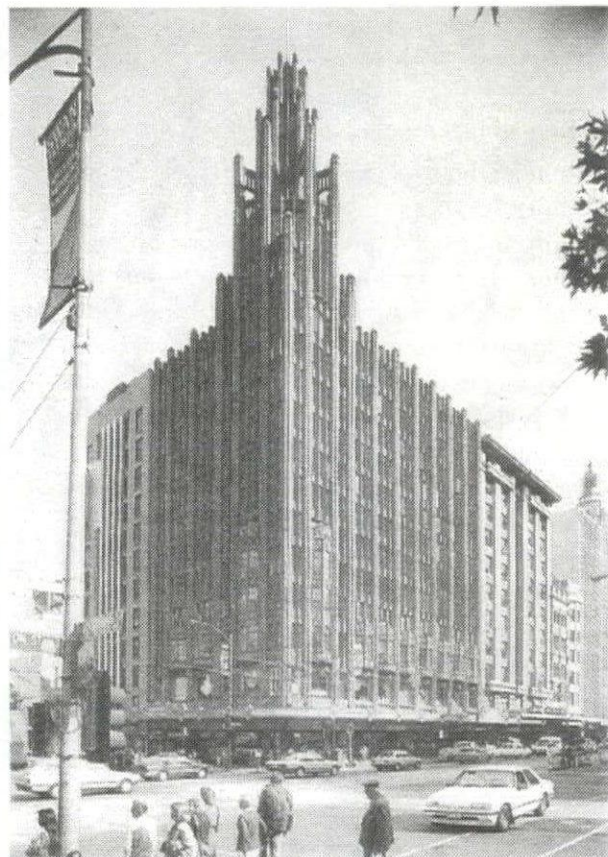
SAH/SCC TOURS MELBOURNE  
JANUARY 2ND-10TH

Melbourne is a most remarkable city. It is American in form, but British in values. Countless migrants from its foundation through to the most recent arrivals have brought layers of meaning to enrich Melbourne's fabric and lifestyle. Join noted architect, historian and heritage planner Timothy Hubbard, and SAH/SCC Board Member Jeff Samudio, as they lead you on a tour to discover "Marvelous Melbourne," from January 2nd to 10th.

From being a rip-roaring colonial outpost of Empire to becoming the sedate home of a new Federal government, Melbourne is the jewel and heart of Australia's culture and commerce. Between the Wars there was a consolidation of existing structures as well as an increase of Americanization. Since W.W.II, with a new sense of independence and place in the world, and with a fresh wave of mass migration, it has come to be known as "the most livable city."

The tour will explore the city in its built form, as well as focus on the infrastructure that services its inhabitants. Splendid private mansions, opulent public buildings, and highlights in the miles of suburbia are all included. Special private viewings have been organized, and participants will have the opportunity to meet local architects and historians.

Accommodations are in the Newman College, at the University of Melbourne, within walking distance of one of the world's finest transit systems and bustling urban core, or at the



Melbourne's 1932 Manchester Unity Building by Marcus Barlow. (Photo: Walking Melbourne, ©National Trust of Australia.)

Adelphi Hotel. Total package is \$2,050 for Newman College accommodations, and \$2,300 per person at the Adelphi, double occupancy. There are only 35 spaces, so \$500 deposits are due with registration. For more travel information and registration forms, call Sundance Meetings & Incentives at 800.424.3434 or 714.752.5456, ext. 129. For details on the tour, call Jeff Samudio at 213.962.4585.

## MONTEREY MOTORING

SAH/SCC TOURS THE SITES OF NORTHERN CALIFORNIA  
JANUARY 24TH-26TH

The Monterey Peninsula is a unique microcosm of the evolution of western European architectural traditions from the 18th century to the present. Tour the peninsula with Richard N. Janick and Kent Seavey, instructors at Monterey Peninsula College, during the weekend of January 24th to 26th.



Both public and private buildings will be featured, highlighting the work of architects, such as Charles Moore, Julia Morgan, Frank Lloyd Wright and William Wurster. Great examples of the Spanish-influenced "Monterey Style" architecture will be explored. Famed sites of Cannery Row and Carmel Mission Ranch (owned and restored by Clint Eastwood) will not be missed. Other tour highlights include:

- St. Mary's Episcopal Church by William Hamilton and Ernest Coxhead
- Asilomar Conference Center by Julia Morgan
- La Mirada Museum addition by Charles Moore
- Della Brooks Walker House by Frank Lloyd Wright
- Charles Sumner Greene Studio, hosted by Thomas Gordon Greene and Betty Greene

Accommodations are at the Hotel Pacific, an award-winning property in the heart of Monterey. Total package cost is \$350 per person, double occupancy; \$200 per person for tour only (non-members add \$35). Deposit of \$200 is due with registration. For more information and registration forms, call Sundance Meetings & Incentives at 800.424.3434 or 714.752.5456, ext. 129. For details on the tour, call Jeff Samudio at 213.962.4585.

Karas House in Monterey, designed by Charles Moore.







**9, Saturday**

**René Magritte.** Slide lecture on art and life of Surrealist artist, with art historian Joanna Roche. UCLA Extension, 3273 Dickson Art Center, UCLA, Westwood; 9:30AM–12:30PM; \$45; res. req. 310.825.9971.

**9, Saturday**

**William Andrews Clark Memorial Library.** Tour of West Adams historical cultural monument designed by Robert D. Farquhar. Los Angeles City Historical Society; 10AM; \$10; res. req. 213.936.2912.

**9, Saturday**

**Downtown Los Angeles Walking Tours.** Tours of Biltmore Hotel, Marble Masterpieces, Art Deco, Broadway Theaters, Pershing Square Landmarks. L.A. Conservancy; 10AM–Noon; \$5; res. req. 213.623.2489.

**9, Saturday**

**Rediscovering Long Beach's Film Heritage.** Tours of historical Balboa Film Studio site, and film program of three silent films made at Balboa studios, Art Theatre, 2025 E. 4th St. Historical Society of Long Beach; Tours 10, 10:45 and 11:30AM; Films 1PM; \$12.50–15; res. req. 310.495.1210.

**9, Saturday**

**The Splendors of Rome.** Slide lecture on art, architecture and interiors, with designer Jody Greenwald. UCLA Extension, 121 Dodd Hall, UCLA, Westwood; 10AM–5PM; \$45–75; res. req. 310.825.9971.

**9, Saturday**

**Champions of Modernity: Southern California Pioneer Artists, 1920–1957.** Lecture on Modernist West Coast art, with art historian Susan Ehrlich. Santa Barbara Historical Museum, 136 E. De la Guerra St., SB; 11AM; free; res. req. 805.966.1601.

**9, Saturday**

**Ennis-Brown House Tours.** One-hour tours of Frank Lloyd Wright's 1924 textile-block concrete house. Trust for Preservation of Cultural Heritage and Friends of the Ennis-Brown House, 2655 Glendower Ave., LA; one-hour tours scheduled 11:30AM–3:30PM; \$510; res. req. 213.668.0234.

**9–11, Saturday–Sunday**

**Botanic Heritage Gems of San Diego.** Weekend tour of public and private gardens, programs and special events. California Garden and Landscape History Society, 3380 Granada Ave., SD; \$45–65; res. req. 619.295.0342.

**10, Sunday**

**Hardscape for Landscaping.** Workshop, with Charlotte Chen. Santa Monica College, 1900 Pico Blvd., SM; 9AM–2PM; \$25; res. req. 310.452.9214.

**10, Sunday**

**Gallery Talk: Hot Rods and Customs.** Tour of exhibition, with car builders Dennis Varni, Steve Moal and Roy Brizio. Oakland Museum of California, 1000 Oak St., Oakland; 2PM; \$3–5. 510.238.2200.

**10, Sunday**

**Ancient Homelands.** Sunday Open Sunday family art workshop with musicians Martin Espino and Cassio Duarte of Nahualli Ensemble. Pueblo de Rio Social Center, 1801 E. 53rd St., LA; 2–4PM. 213.485.4474.

**11, Monday**

**Bertram Goodhue.** Lecture on architect of 1915 Expo in Balboa Park, with architectural historian David Garrad Lowe. San Diego Historical Society, Manchester Executive Conference Center, University of San Diego; 5:50–6:30PM; \$20–25; res. req. 619.232.6203.

**11, Monday**

**AIA Lecture: Foster.** Presentation by David Nelson on the work of London firm Sir Norman Foster and Partners, sponsored by AIA/SF. Center For the Arts Theater, 701 Mission St., SF; 7PM; \$10–15. 415.978.2787.

**11, Monday**

**The Last Days of the Philistines: Archeological Insights Into Ekron of the Bible.** Lecture, with Seymour Gitin. Skirball Cultural Center, 2701 N. Sepulveda Blvd., LA; 8:15PM; res. req. 310.440.4666.

**12, Tuesday**

**Chelsea Porcelain.** Lecture, with ceramic curator J.V.G. Mallet. The Huntington Library, 1151 Oxford Rd., San Marino; 7:30PM; free. 818.405.2100.

**13, Wednesday**

**Progressive LA: Graphic Design.** Lecture, with graphic design teams Adams Morioka and ReVerb. Pacific Design Center, 8687 Melrose Ave., LA; 6:30–7:30PM; res. req. 310.657.0800, ext. 265.

**13, Wednesday**

**The Ecology of Magic.** Lecture by ecologist and philosopher David Abram, author of *The Spell of the Sensuous: Perception and Language in a More-Than-Human World*. Southern California Institute of Architecture, 5454 Beethoven St., LA; 7:30PM; free. 310.574.1123.

**14, Thursday**

**Architecture and Urban Design Lecture.** Speaker to be announced. Department of Architecture and Urban Design, School of the Arts and Architecture, UCLA, 1102 Perloff Hall, Westwood; 6:30PM; free. 310.825.2278.



Clarence Hinkle's (1880–1960) "Santa Barbara Harbor" is on auction to benefit the Santa Barbara Historical Society, November 8th–9th.

**15, Friday**

**Rome Prize Competition Deadline.** Travel fellowships to Rome for independent projects in 18 disciplines, including architecture, urban design, historic preservation and urban planning. American Academy in Rome, 7 E. 60th St., NY, NY 10022. 212.751.7200.

**15, Friday**

**Twenty Tools That Protect Historic Resources After an Earthquake.** Workshop based on publication of same name, funded by Historic Preservation Partners for Earthquake Response. California Preservation Foundation; Berkeley; \$65–100; res. req. 510.763.0972.

**15, Friday**

**Conversations With the Artists.** Discussion about the role of art in defining cultural communities, moderated by Mark Greenfield, Watts Towers Arts Center director, with artists Judy Chan, Charles Dickson, Yolanda Gonzalez, Kori Newkirk, Miquel Angel Reyes, and David Alan Yamamoto. Watts Towers Arts Center, 1727 E. 107th St., LA; 7–8PM. 213.625.0414.

**15, Friday**

**Chamber Music in Historic Sites: Muir String Quartet.** Concert of string music of Barber, Schubert and Smetana at the Pompeian Room of the 1900 Doheny Mansion designed by Eisen and Hunt. Da Camera Society of Mount St. Mary's College; 8PM; \$49; res. req. 310.440.1351.

**16, Saturday**

**A Day in Greece.** Class on ancient architecture, with Orange Coast College Art Gallery director Irini Vallera-Rickerson. UCLA Extension, 121 Dodd Hall, UCLA, Westwood; 9AM–4PM; \$45–75; res. req. 310.825.9971.

**16, Saturday**

**Connections Old and New.** Walking tour of downtown LA, with landscape architect Thomas A. Lockett and architect Jim Smith. UCLA Extension; meet at, Biltmore Hotel, 506 S. Grand Ave., LA; 9AM–4PM; \$45–75; res. req. 310.825.9971.

**16, Saturday**

**Impressions and Origins.** Slide talk, with environmental designer Wallace Cunningham. Friends of San Diego Architecture, New School of Art and Architecture, 1249 F St., SD; 9:30–11:30AM; \$3. 619.235.4100.

**16, Saturday**

**Hollywood in the Twenties.** Tour of Whitley Heights, Musso and Frank's, Ennis-Brown House. California Historical Society; 9:30AM–4:30PM; \$58–68; res. req. 310.454.5730.

**16, Saturday**

**Historic Downtown Long Beach.** Architectural walking tour featuring the Breakers Art Deco "SkyRoom," sponsored by Long Beach Heritage Coalition. Historical Society of Long Beach, 418 Pine Ave., LB; 10AM; \$3; res. req. 310.493.7019.

**16, Saturday**

**Downtown Los Angeles Walking Tours.** Tours of Palaces of Finance, Union Station, Art Deco, Broadway Theaters, Pershing Square Landmarks. L.A. Conservancy; 10AM–Noon; \$5; res. req. 213.623.2489.

**16, Saturday**

**Downtown Metro Art Tour.** Red Line metro tour, with Gayle Gale. Santa Monica College; meet at Union Station, Main Entrance, 800 N. Alameda St., LA; 10:30AM–4:30PM; \$25; res. req. 310.452.9214.

**16, Saturday**

**Greystone Mansion and the Hills Above Beverly.** Tour of largest Beverly Hills estate. Neighborhood Place Project; 1–4PM; \$10; res. req. 909.982.3225.

**17, Sunday**

**George Marston and the Arts and Crafts.** The Arts and Crafts Movement lecture series sponsored by the San Diego Historical Society Friends of the Marston House. Thornton Theatre, Museum of San Diego History, Balboa Park, SD; 1PM; \$5–8; res. req. 619.280.3579.

**18, Monday**

**AIA Lecture: Vidler.** Presentation by Los Angeles architect Anthony Vidler, sponsored by AIA/SF. Center For the Arts Theater, 701 Mission St., SF; 7PM; \$10–15. 415.978.2787.

**19, 21, Tuesday, Thursday**

**Real Estate Exam Review.** Study course for California Real Estate Salesperson License Exam, with H. Chris Lev, Jr. Santa Monica College; John Adams Middle School; 6:30–9:30PM; \$90; res. req. 310.452.9214.

**20, Wednesday**

**Networking With Women's Professional Organizations.** Association for Women in Architecture. 213.389.6490.

**20, Wednesday**

**Removing the Veils of Time: Recent Painting Restoration From the Huntington Art Collections.** Lecture, with painting conservator Mark Leonard. The Huntington Library, 1151 Oxford Rd., San Marino; 7:30PM; free. 818.405.2100.

**21, Thursday**

**Gravity Is Only Temporary.** Lecture, with architect Eric Owen Moss. Department of Architecture and Urban Design, School of the Arts and Architecture, UCLA, 1102 Perloff Hall, Westwood; 6:30PM; free. 310.825.2278.

**21, Thursday**

**Good Design Good Business.** Lecture, with David N. Rinehart. AIA/LA Design Committee; Anshen + Allen Architects, 5055 Wilshire Blvd., LA; 6:30PM; free for AIA members and students, \$5 for others; res. req. 213.938.9356 Lisa Landworth.

**21, Thursday**

**Design Program Open House.** Program overview, career discussion, student work display. UCLA Extension, Third St. Promenade, SM; 7–9PM. 310.825.9971.

**22, Friday**

**Twenty Tools That Protect Historic Resources After an Earthquake.** Workshop based on publication of same name, funded by Historic Preservation Partners for Earthquake Response. California Preservation Foundation; Los Angeles; \$65–100; res. req. 510.763.0972.

**22, Friday**

**Thirtieth Anniversary Celebration.** AIA Long Beach/South Bay Chapter. 310.495.1469.

**23, Saturday**

**Historic East Village.** Art and architecture walking tour, sponsored by Long Beach Heritage Coalition. Historical Society of Long Beach, 418 Pine Ave., LB; 10AM; \$3; res. req. 310.493.7019.

**23, Saturday**

**Downtown Los Angeles Walking Tours.** Tours of City Hall, Mecca for Merchants, Art Deco, Broadway Theaters, Pershing Square Landmarks. L.A. Conservancy; 10AM–Noon; \$5; res. req. 213.623.2489.

**23, Saturday**

**Riverside Citrus Heritage.** Tour featuring Citrus Heritage State Historic Park and Heritage House areas. Neighborhood Place Project; 1–4PM; \$10; res. req. 909.982.3225.

**23, Saturday**

**Schindler, Sardi's and Swing.** Exhibition preview, reception, dinner, entertainment and dancing to benefit the Architectural Drawing Collection at UCSB. Corwin Pavilion, University Center, UCSB; 6:30–11:30PM; res. req. 805.893.2951.



Thirty-first Street House in Santa Monica is a project by architect Julie Eizenberg, of Koning Eizenberg, who will speak at San Francisco's Center for the Arts, November 4th. (Photo: Tim Griffith/Images Australia Pty. Ltd.)

CALENDAR 5





"Hotel Divine" was a featured room setting by Michael Berman and Stacy Vaughn at Divine Design 1995. This year's event, a fundraiser for DIFFA/LA and Project Angel Food, is December 4th-10th. (Photo: Charles White)

#### 24, Sunday

**Introduction to Planting Materials.** Softscape workshop, with Charlotte Chen. Santa Monica College, 1900 Pico Blvd., SM; 9AM-2PM; \$25; res. req. 310.452.9214.

#### 24, Sunday

**Schindler Symposium.** Papers on the architect and furniture designer presented by architectural historians, critics and architects, including Stefanos Polyzoides, Judith Sheine and Robert Winter. University of California at Santa Barbara; 1-4PM; res. req. 805.893.2951.

#### 24, Sunday

**Art Talk: Paradise Cage.** Talk and exhibition tour with architect Wolf Prix and artist Kiki Smith. Museum of Contemporary Art, 250 S. Grand, LA; 3PM. 213.626.6222.

#### 26, Tuesday

**1997 Preservation Design Awards Deadline.** Submissions due for awards program by California Preservation Foundation in categories of restoration, rehabilitation/adaptive re-use, preservation/stabilization, compatible additions to historic structures and contextual in-fill projects, cultural resource studies and reports, craftsmanship/preservation technology, archaeological and cultural landscape projects. CPF, 405 14th St., Ste. 1010, Oakland. 510.763.0972.

# december

#### 1, 8, 15, 22, 29, Sunday

**Pacific Heights Walking Tour.** Given by The Foundation for San Francisco's Architectural Heritage. 12:30PM; \$5. 415.441.3004.

#### 3, 5, 7-24, 26, 28, Tues., Thurs., Sat.

**Beverly Hills Art and Architecture Tours.** Trolley tour of significant sites, including Pei's CAA Building and Meier's Museum of Television and Radio. City of Beverly Hills; meet at Rodeo Dr. and Dayton Way; 10:30AM-Noon; \$42. 310.285.2438.

#### 3, 5, 7-24, 26, 28, Tues., Thurs., Sat.

**Coronado Touring.** Walking tours every Tuesday, Thursday and Saturday featuring Spreckels mansion, Hotel del Coronado, Duchess of Windsor Cottage. Departs from Glorietta Bay Inn, across from Hotel del Coronado; 11AM-12:30PM; \$6. 619.435.5892 Gerry MacCartee/ 619.435.5993 Nancy Cobb.

#### 4-10, Wednesday-Tuesday

**Divine Design.** Annual benefit for Project Angel Food and DIFFA/LA features 45 showcase room-settings, sales of designer fashions, home furnishings and antiques, silent and live auctions, gala awards celebration. Pacific Design Center, 8687 Melrose Ave., LA. 310.201.5033.

#### 5, Thursday

**UCLA's Clark Library and West Adams District.** Tour of 1934 library designed by Robert Farquhar and 1920s residential neighborhood, with Jim Cavener. Neighborhood Place Project; 1-4PM; \$10; res. req. 909.982.3225.

#### 5, Thursday

**Pasadena Art Walk.** Self-guided, Old Town open house with special events, artists, refreshments. The Armory Center for the Arts; 6-10PM. 818.792.5101.

#### 5-7, Thursday-Saturday

**Holiday Lamplight Tours.** Holiday celebration tours including upstairs of Hale House. Heritage Square Museum, 225 S. Lake Ave., Pasadena; res. req. 818.449.0193.

#### 6, Friday

**Chamber Music in Historic Sites: Bachmann-Klibonoff-Fridman Trio.** Concert of trios by Beethoven, Mendelssohn and Ravel at the Pompeian Room of the 1900 Doheny Mansion designed by Eisen and Hunt. Da Camera Society of Mount St. Mary's College; 8PM; \$49; res. req. 310.440.1351.

#### 7, Saturday

**Downtown and Neighborhood Development: A Search For Balance.** Slide talk, with San Diego State professor Nico Calavita. Friends of San Diego Architecture, New School of Art and Architecture, 1249 F St., SD; 9:30-11:30AM; \$3. 619.235.4100.

#### 7, Saturday

**Downtown Los Angeles Walking Tours.** Tours of Art Deco, Broadway Theaters, Little Tokyo, Pershing Square Landmarks, Terra Cotta. L.A. Conservancy; 10AM-Noon; \$5; res. req. 213.623.2489.

#### 7, Saturday

**AWA Holiday Party and Gift Auction.** Association for Women in Architecture. 213.389.6490.

#### 7-8, Saturday-Sunday

**Art Deco '50s Holiday Sale.** More than 200 dealers showing furnishings, accessories, art and collectibles from 1920s through 1950s. Sale produced by Peter and Deborah Keresztury. Concourse Exhibition Center, 8th and Brannan Sts., SF. 415.383.3008 or 415.599.3326.

#### 7, 14, 21, 28, Saturday

**Google Tours.** Choice of three-to-five-hour tours: The San Gabriel Valley, Behind the Orange Curtain, Coffee Shop Modern and More, Cocktails 'N' Coffee Shops, given by preservationist John English. \$34; res. req. 213.980.3480.

#### 7, 14, 21, 28, Saturday

**Turistorica Walking Tours.** Given by Architectural Foundation of Santa Barbara and Citizens Planning Foundation of Santa Barbara. Meet at City Hall Steps, De La Guerra Plaza, SB; 10AM-Noon; \$5. 805.965.3021 or 805.965.6307.

#### 8, Sunday

**Historical Jewish LA.** Guided bus tour of Jewish neighborhoods and institutions in South Los Angeles, the West Adams district and Venice. Jewish Historical Society, 6505 Wilshire Blvd., LA; 9:30AM-3PM; \$25; res. req. 213.653.7740.

#### 8, Sunday

**Historic Christmas Party.** Victorian celebration and tours of turn-of-the-century historical house. Grier Musser Museum, 403 S. Bonnie Brae, LA; 1-5PM; \$10; res. req. 213.413.1814.

#### 8, Sunday

**Gallery Talk: Hot Rods and Customs.** Tour of exhibition, with curator Philip E. Linhares and car historians Michael Dobrin and Pat Ganahl. Oakland Museum of California, 1000 Oak St., Oakland; 2PM; \$3-5. 510.238.2200.

#### 8, Sunday

**Chamber Music in Historic Sites: Sequentia.** Concert of holiday chants in the French Gothic Westminster Presbyterian Church, Pasadena. Da Camera Society of Mount St. Mary's College; lecture 2:15PM, concert 3PM; \$19-28; res. req. 310.440.1351.

#### 9, Monday

**Picture This.** Program on photography for lighting projects. Designers Lighting Forum; product display 6PM, program 7PM; \$5-10; res. req. 310.476.9200 Barbara Hirsch.

#### 9, Monday

**The Age of King Solomon: New Archeological Evidence.** Lecture, with William G. Dever. Skirball Cultural Center, 2701 N. Sepulveda Blvd., LA; 8:15PM; res. req. 310.440.4666.

#### 11, 18, Wednesday

**Children Experimenting With Architecture.** Hands-on workshop for kids 5-13 on designing and building holiday gingerbread tree-houses, taught by architect Alla Kazovsky. Kids' Studio; Pacific Design Center, 8687 Melrose Ave., LA; 4-6PM; \$75; res. req. 213.655.4028.

#### 14, Saturday

**Old Pasadena Walking Tour.** Given by Pasadena Heritage. Meet at Arroyo Seco Building, 117 E. Colorado; 9-11:30AM; \$5; res. req. 818.793.0617.

#### 14, Saturday

**Downtown Los Angeles Walking Tours.** Tours of Biltmore Hotel, Marble Masterpieces, Art Deco, Broadway Theaters, Pershing Square Landmarks. L.A. Conservancy; 10AM-Noon; \$5; res. req. 213.623.2489.

#### 14, Saturday

**Downtown Public Art Tour.** Walking and metro tour, with Gayle Gale. Santa Monica College; meet at MOCA, 250 S. Grand, LA; 10:30AM-4:30PM; \$25; res. req. 310.452.9214.

#### 14-17, Saturday-Tuesday

**Identity, Tradition and Built Form: The Role of Culture in Planning and Development.** Fifth Conference of the International Association for the Study of Traditional Environments (IASTE) featuring keynotes and sessions. Center for Environmental Design Research, 390 Wurster Hall, UC Berkeley; \$325; res. req. 510.642.2896.

#### 14, 21, Saturday

**Candlelight Tours.** Victorian decoration in 19th-century historic home, presented by the Glendale Historical Society. The Doctor's House Museum, 1601 W. Mountain, Brand Park, Glendale; 7-9PM; res. req. 818.242.4290.

#### 21, Saturday

**Historic Downtown Long Beach.** Architectural walking tour featuring the Breakers Art Deco "SkyRoom," sponsored by Long Beach Heritage Coalition. Historical Society of Long Beach, 418 Pine Ave., LB; 10AM; \$3; res. req. 310.493.7019.

#### 21, Saturday

**Downtown Los Angeles Walking Tours.** Tours of Palaces of Finance, Union Station, Art Deco, Broadway Theaters, Pershing Square Landmarks. L.A. Conservancy; 10AM-Noon; \$5; res. req. 213.623.2489.

#### 21, Saturday

**Huntington Drive in San Marino.** Tour of the grand boulevard of bungalows, shops and civic buildings, with Jim Cavener. Neighborhood Place Project; 1-4PM; \$10; res. req. 909.982.3225.

#### 28, Saturday

**Historic East Village.** Art and architecture walking tour, sponsored by Long Beach Heritage Coalition. Historical Society of Long Beach, 418 Pine Ave., LB; 10AM; \$3; res. req. 310.493.7019.

#### 28, Saturday

**Downtown Los Angeles Walking Tours.** Tours of City Hall, Mecca for Merchants, Art Deco, Broadway Theaters, Pershing Square Landmarks. L.A. Conservancy; 10AM-Noon; \$5; res. req. 213.623.2489.

## SAH/SCC EVENT CALENDAR

1996

Annual Meeting  
October 27th

See Page 1

Viva Las Vegas Tour  
November 8th-10th

See Page 2

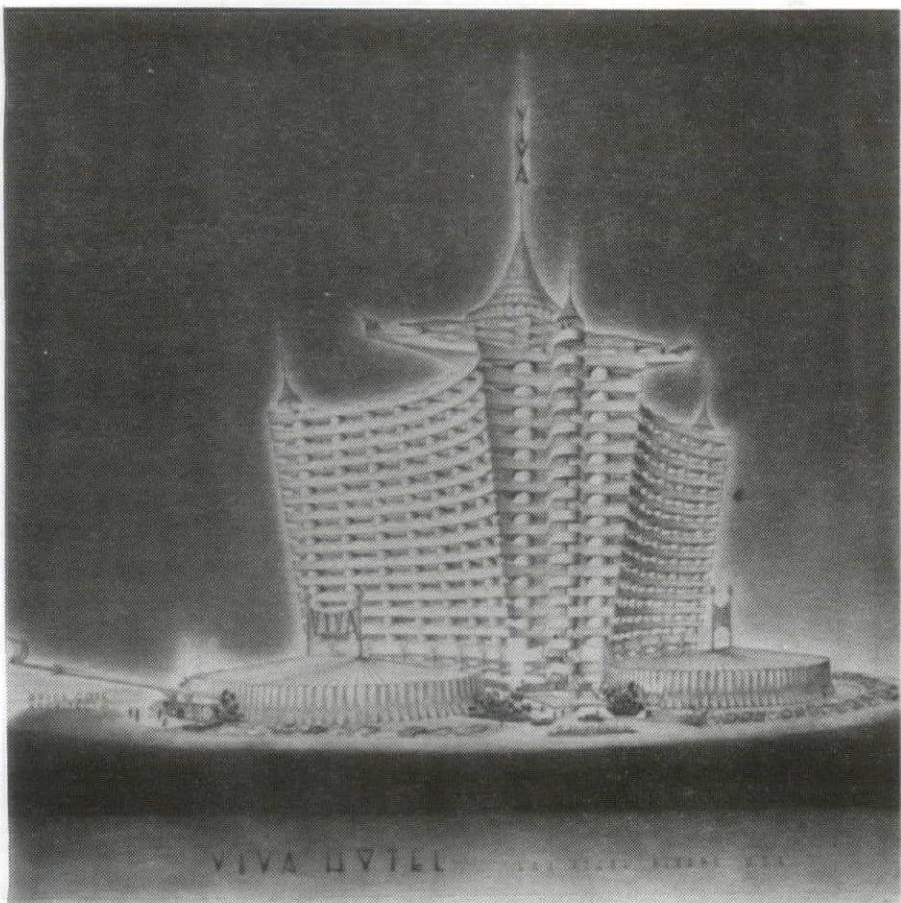
Kevin Starr Lecture  
re-scheduled  
new date in next newsletter

1997

Melbourne Tour  
January 2th-10th  
See Page 3

Monterey Tour  
January 24th-26th  
See Page 3





The unbuilt design for Bruce Goff's Viva Hotel in Las Vegas from 1961 is featured in "The Architecture of Bruce Goff, 1904-1982: Design for the Continuous Present" at the Nevada Museum of Art. (Collection of The Art Institute of Chicago; gift of Shin'en Kan, Inc.)

**Berkeley Historical Society and Museum**  
1931 Center St. 510.482.3336.  
*The Whole World Is Watching*, November 3-March 10. Photojournalistic view of Berkeley and East Bay from 1964 through 1974.

**California Historical Society**  
678 Mission St., SF. 415.357.1848.  
*Bearing Witness to Manifest Destiny: Early California Through the Lens of Western Photographers*, through February 15. Photos by both famous and unknown photographers reveal the California pioneering spirit.

**Craft and Folk Art Museum**  
5800 Wilshire Blvd., LA. 213.937.5544.  
*Swedish Folk Art: All Tradition Is Change*, November 9-January 26. Comprehensive survey of traditional and contemporary works of furniture, textiles, costumes and objects, plus full-scale recreation of typical peasant farmhouse living room.

**de Saisset Museum**  
Santa Clara University. 408.554.4529.  
*First Californians as Seen by Edward Curtis*, opening December 6. Photography selections from the collection on permanent display.

**Design House '96**  
Toluca Lake. 818.509.3898; 213.993.1098.  
Through November 3. More than 20 designers create spaces in former Bing Crosby mansion, a 1936 Georgian Colonial Revival estate designed by J. Robert Harris, which was owned by Andy Griffith, and is now the residence of Jerry Van Dyke. Tours benefit the Assistance League of Southern California. Tuesday-Sunday, 10AM-4PM; \$17.

**Fullerton Museum Center**  
301 N. Pomona Ave. 714.738.6545.  
*Return to Route 66: Photographs From the Mother Road*, December 6-February 23. Photographer Shellee Graham shows forgotten towns, roadside diners, motels and people on the 70th anniversary of the legendary highway.

**The Geffen Contemporary at MOCA**  
152 North Central Ave., LA. 213.626.6222.  
*Just Past: The Contemporary in MOCA's Permanent Collection, 1975-1996*, through January 19. A review of art from past 20 years.

*Images of an Era: Selections From the Permanent Collection*, through August 17. Chronological collection of art from 1940s to 1970s.

**The J. Paul Getty Museum**  
17985 Pacific Coast Hwy., Malibu. 310.458.2003.  
*Julia Margaret Cameron: The Creative Process*, through January 5. Photo portraits of eminent Victorians, including Tennyson and Herschel.

**Hennessey and Ingalls**  
1254 3rd St. Promenade, SM. 310.458.9074.  
*AIA/LA Design Awards and Next LA Awards*, December 6-January 2. Entries in the annual awards program, this year including both built and conceptual work.

**Hollyhock House**  
4808 Hollywood Blvd., LA. 213.662.7272.  
*Architecture: East-West*, through December 31. Exhibition of projects by Ted Tokio Tanaka, FAIA, exhibiting his influences of Frank Lloyd Wright and Le Corbusier, and his incorporation of Japanese simplicity.

**The Huntington Library and Gardens**  
1151 Oxford Rd., San Marino. 818.405.2141.  
*Celebrating William Morris: Selections From the Sanford and Helen Berger Collection*, through January 5. Fabrics, wallpapers, stained glass, ceramics, tapestries, carpets and printed books by the multifaceted craftsman, poet, designer, printer, and utopian socialist, on the centenary of Morris' death.

*Greene and Greene Exhibition*, ongoing. New installation of furniture and decorative arts by Charles and Henry Greene, including pieces from the Thorsen House and the recreated dining room of the Henry M. Robinson House.

**Helen Lindhurst Architecture Gallery**  
USC School of Architecture, Watt Hall, LA. 213.740.2097.  
*Work by Albert C. Martin & Associates*, through November 8.

**Los Angeles County Museum of Art**  
5905 Wilshire Blvd., LA. 310.857.6000.  
*Some Grids*, through January 5. Twentieth-century works based on the grid.

*Fabric of Enchantment*, through January 26. Batik from North Coast of Java.

**Museum of Contemporary Art**  
250 S. Grand Ave., LA. 213.626.6222.  
*Friendly Fire*, through November 3. Public-art project of mock-bulletproof vests imbued with social commentary by San Diego artists.

*Paradise Cage: Kiki Smith and Coop Himmelblau*, November 24-February 2. Collaborative project between artist Smith and architect Wolf Prix of sculptural work inside a cage-like structure, referring to Garden of Eden and images of paradise.

*Walt Disney Concert Hall: A Celebration of Music and Architecture*, through July 27. Large-scale models and related materials about Frank Gehry's design for downtown's Walt Disney Concert Hall.

**Museum of Contemporary Art, San Diego**  
700 Prospect St., La Jolla. 619.454.3541.  
*Inside/Out: Court, Garden, Wall*, through December. Installations by Mel Chin, Gabriel Orozco, Regina Silveira and Edward Ruscha.

**Museum of San Diego History**  
Casa de Balboa, Balboa Park. 619.232.6203.  
*Visions: QuiltArt*, November 2-January 26. Winning contemporary quilts from biennial juried international competition.

*Scenic View Ahead*, through December 15. AAA's collection of Westways cover art, from 1928 to 1980.

*Eden in the Desert: San Diego's Quest for Water*, through December. Interactive exhibition chronicles how water has shaped the development of San Diego.

**Oakland Museum of California**  
1000 Oak St. 510.238.2200.  
*Hot Rods and Customs: The Men and Machines of California's Car Culture*, through January 5. Show of 28 hot-rod and custom vehicles from the 1930s to 1960s, plus vintage photographs, equipment and exhibits.

**Nevada Museum of Art**  
160 W. Liberty St., Reno. 702.329.3333.  
*The Architecture of Bruce Goff, 1904-1982: Design for the Continuous Present*, through December 1. Exhibition organized by the Art Institute of Chicago presenting 100 original drawings, plus photographs, letters, notes and objects that inspired Goff's visionary designs.

**Palm Springs Desert Museum**  
101 Museum Dr. 619.325.7186.  
*Julius Shulman: 60 Years of Architectural Photography*, through December 31. Thirty prints by the legendary California photographer of projects by William Coddery, Albert Frey, Richard Neutra, E. Stewart Williams and other California modernists.

*Steve Chase Art Wing and Education Center*, opens November 13. New wing dedicated to the memory of late interior designer Steve Chase, and designed by E. Stewart Williams, including galleries and lecture hall.

*Mark Rothko Paintings: 1930-1970*, November 13-January 5. Thirty paintings spanning the career of the Abstract Expressionist artist.

*Dale Chihuly: On Site*, November 13-January 5. Large-scale installations of blown glass, including new piece created especially for the museum.

**Sacramento Public Library**  
828 I St. 916.264.2770.  
*The Frontier in American Culture*, November 1-December 15. Photos, maps, ads and artifacts tell stories of the settlement of the West, both violent confrontation and peaceful settlement.



The Raymond Loewy residence designed by Albert Frey is photographed by Julius Shulman as part of "Julius Shulman: 60 Years of Architectural Photography" at Palm Springs Desert Museum. (Photo: © Julius Shulman)

**San Francisco Museum of Modern Art**  
151 3rd St. 415.357.4000.  
*Moving Pictures: Films by Photographers*, November 22-December 15. Film series includes work by Brassai, Callahan, Erwit, Frank, Mapplethorpe, Sheeler, Steiner, Strand, Weegee, and others. Screenings Friday and Sunday at 1PM and 3PM.

*Gnomon*, through December 1. Site-specific construction by architects John Randolph and Bruce Tomb, and graphic designer Tom Bonauro, that challenges perceptions of physical space.

*Souvenirs of Savings: Miniature Bank Buildings*, December 12-February 25. More than 100 miniature metal banks in a variety of architectural styles, from the collection of Ace Architects.

*Crossing the Frontier: Photographs of the Developing West, 1849 to the Present*, through January 28. More than 250 images tracing how photographers have confronted the visual realities of the Western landscape.

*Tom Bonauro*, through February 15. Survey of work by the innovative graphic designer, selected from the permanent collection.

**Santa Barbara Historical Museum**  
136 E. De la Guerra St. 805.966.1601.  
*A Century of California Art*, November 7-9. Exhibition and auction preview by historical and contemporary Santa Barbara and California artists.

**Southern California Institute of Architecture**  
5454 Beethoven St., LA. 310.574.1123.  
*AIA/LA Design Awards and Next LA Awards*, through November 22. Entries in the annual awards program, this year including both built and conceptual work.

*Student Exhibition Week*, November 19-24. Student works featuring models, drawings, mixed-media works and text.

**UCLA School of the Arts and Architecture**  
Perloff Hall, Gallery 1220. 310.825.6335.  
*Against the Wall: Re-Inscribing Collective Symbolism Onto the Spaces of "Hidden" Los Angeles*, through November 8. Photo installation of MacArthur Park by TRAN-sito.

*From Philosophy to Architecture: From a Philosophy of Language to a Philosophy of Space*, November 13-December 10. Exhibition curated by Rodica Reif redefining architecture using concepts from philosophy, linguistics, literary criticism and art.

**University Art Museum, UC Santa Barbara**  
Arts Building Complex. 805.893.2951.  
*The Furniture of R.M. Schindler*, November 24-February 2, 1994. Major solo exhibition of Schindler's built-in and free-standing furniture, curated by the late David Gebhard, includes 100 original drawings and historical photographs, along with more than 50 examples of original and reproduction furniture.



## SAH/SCC ORDER FORM

### TRAVEL TOURS

**Las Vegas Tour — November 8–10, 1996**

\_\_\_\_\_ deposit(s) at \$100 each \$ \_\_\_\_\_

**Melbourne Tour — January 2–10, 1997**

\_\_\_\_\_ deposit(s) at \$500 each \$ \_\_\_\_\_

**Monterey Tour — January 24–26, 1997**

\_\_\_\_\_ deposit(s) at \$200 each \$ \_\_\_\_\_

**TOTAL:** \$ \_\_\_\_\_

Name \_\_\_\_\_

Street Address \_\_\_\_\_

City \_\_\_\_\_

State \_\_\_\_\_

Zip \_\_\_\_\_

Daytime Phone \_\_\_\_\_

Evening Phone \_\_\_\_\_

Fax this form to: 714.833.2769

Send this form to: Sundance Meetings & Incentives  
Attn: Steven Facer  
19800 MacArthur Blvd., Suite 100  
Irvine, CA 92612

Questions? Call 800.424.3434 or 714.752.5456, ext. 129

## BECOME A MEMBER OF SAH/SCC

### SAH/SCC Membership Benefits:

- Subscription to bi-monthly SAH/SCC News
- Member prices for SAH/SCC events
- 20% discount at the Gamble House shop
- Annual *The Dr. David Gebhard Review*
- Discounts on selected items at Urban Inversions
- Volunteer activities
- Opportunity to arrange and coordinate events
- Annual meeting
- Life Members are listed in each issue of SAH/SCC News

### Membership Categories:

- \_\_\_\_\_ \$35 Individual Member (\$15 for each addition name at same address)
- \_\_\_\_\_ \$20 Student (with copy of current I.D.)
- \_\_\_\_\_ \$100 Patron (up to 2 names at same address)
- \_\_\_\_\_ \$500 Life Member (one-time contribution)
- \_\_\_\_\_ \$750 Individual Event Sponsor
- \_\_\_\_\_ \$1500 Corporate Event Sponsor

### Dr. David Gebhard Review Fund

\$ \_\_\_\_\_ donation in the name of \_\_\_\_\_

### Dr. Robert Pierson Cultural History Fund

\$ \_\_\_\_\_ donation in the name of \_\_\_\_\_

**TOTAL:** \$ \_\_\_\_\_

Name \_\_\_\_\_

Street Address \_\_\_\_\_

City \_\_\_\_\_

State \_\_\_\_\_

Zip \_\_\_\_\_

Daytime Phone \_\_\_\_\_

Evening Phone \_\_\_\_\_

Send to SAH/SCC, to: SAH/SCC News, P.O. Box 92224,  
Pasadena, CA 91109-2224. Call 800.SAHSCC for info.



## the furniture of R.M. SCHINDLER

An exhibition of designs  
by an icon of American modernist architecture  
University Art Museum, UCSB  
November 24, 1996 - February 2, 1997  
Presented as a tribute to David Gebhard (1927-1996)

### A Schindler Symposium

Sunday, November 24, 1996, 1-4 pm  
Presentations by architectural historians,  
critics, and architects followed by  
an opening reception.

### Schindler, Sardi's & Swing

Saturday, November 23, 1996,  
6:30-11:00 pm

A spectacular evening including  
an exhibition preview, gourmet  
cocktail reception, elegant dinner,  
music, and dancing. A silent auction  
of original architectural drawings,  
photographs, models, and furniture  
donated by notable architects, architec-  
tural photographers, and designers  
in Los Angeles, Santa Barbara, and  
across the U.S. to benefit the Architectural Drawing Collection of the Museum.

Hosted by the University Art Museum Council.

For program information, tickets, and hotel packages call Museum: 805/893-2951

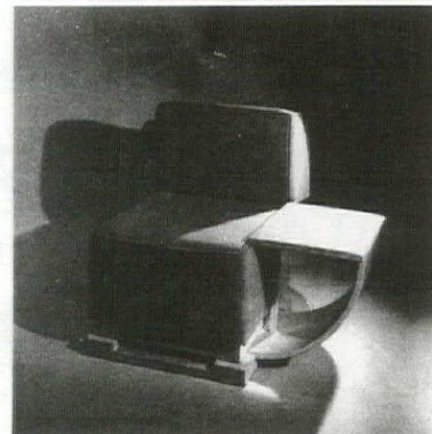
### OLD HOUSE ADVOCATES!

Self-paced architectural remodel tutorial  
on disk. "Historic Preservation  
Source Book" FREE bibliography,  
PROVEN strategies, 1000's of no/low  
cost materials FULLY DOCUMENTED.  
[www.netpage.com/  
~recycler/com/historicpreserv/](http://www.netpage.com/~recycler/com/historicpreserv/)

To advertise in  
SAH/SCC News,  
call 310.247.1099

### CHAPTER IN NEED!

SAH/SCC is in need of filing  
cabinets. If you have any to  
spare, please call 800.SAHSCC  
to arrange for donation and  
pick up.



Modular Chair from the Van Patten House, 1934  
photo by Marvin Rand

## Welcome New SAH/SCC Members

Robert Berlin  
Benjamin S. Cardozo  
and Andrea Kay King  
Richard A. Cortez  
Vicki Laidig  
and John McCuish  
Kristin Leuschner  
Rilla Rogan  
Toby Smith,  
California Heritage  
Museum  
Gerald T. Takano

## CALL FOR SESSION PROPOSALS SAH 51ST ANNUAL MEETING IN LOS ANGELES APRIL 15-18, 1998

Members wishing to chair a session at the 1998 annual meeting in Los Angeles  
are invited to submit proposals by January 6, 1997, to Richard Longstreth,  
Department of American Studies, 2108 G. Street, NW, George Washington  
University, Washington, DC 20052 (fax: 202.994.8651).

Sessions are sought that collectively will reflect the full range of architectural/  
historical interest in the field. This scope encompasses common patterns as well  
as singular achievements in buildings, structures, landscapes, and settlement  
forms in all parts of the globe and from all periods. Sessions presenting new  
approaches, as well as ones that focus on method and/or other issues pertinent to  
the discipline, are welcome.

Proposals should entail a prospectus of not more than two pages explaining  
the significance and parameters of the topic. Include name, affiliation, address,  
phone numbers, etc.

Proposals will be selected on the basis of merit and on the demands of  
providing a diverse, well-balanced program. No late proposals will be considered.

For information, contact the national office, Society of Architectural  
Historians, 1365 N. Astor St., Chicago, IL 60610. 312.573.1365.