

SAH/SCC

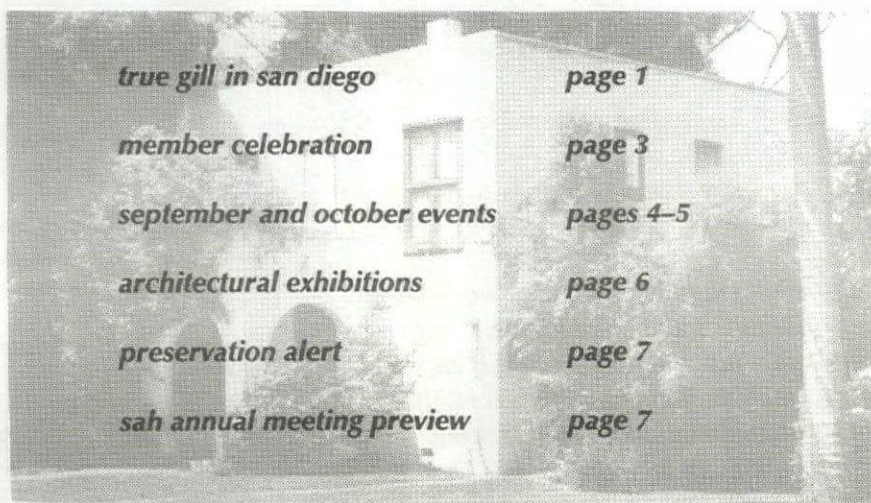
SOCIETY OF ARCHITECTURAL HISTORIANS SOUTHERN CALIFORNIA CHAPTER

post office box 92224, pasadena, ca 91109-2224

800.9SAHSCC

http://www.ccsf.caltech.edu/~mach/sah/index.htm

NEWS
1997
september/october 1997



true gill in san diego page 1

member celebration page 3

september and october events pages 4-5

architectural exhibitions page 6

preservation alert page 7

sah annual meeting preview page 7

U.S. Postage
FIRST CLASS MAIL
PAID
Pasadena, CA
Permit No. 740

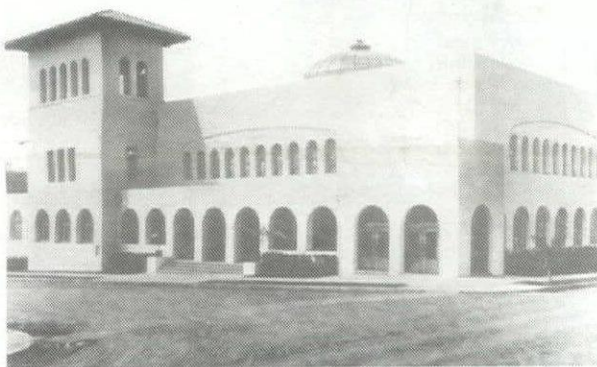
Gill's G.W. Simmons House of 1909, also known as the Cube House, will be seen on tour, October 18th. (Photo: Marvin Rand)

IRVING GILL: FUNDAMENTAL TRUTHS

SAH/SCC TOUR: OCTOBER 18TH, SAN DIEGO

Don't miss **Irving Gill: Fundamental Truths**, the first in-depth tour of Irving Gill's work in San Diego, on Saturday, October 18th. SAH/SCC is pleased to present this event, which examines Gill's place in architectural history, asking the pressing question: Was Irving Gill an avant-garde Arts and Crafts architect, or the world's first Modernist architect?

This is a tour event not to be missed by anyone interested in Southern California architecture, the Arts and Crafts movement, Modernism and the contributions of one of the most misunderstood architects of this century. Tickets are available now for this day-long architectural experience, organized by SAH/SCC Board Member Ted Wells. Spaces are limited, so fill out the form on Page 8 to reserve a place.



The First Church of Christ Scientist.

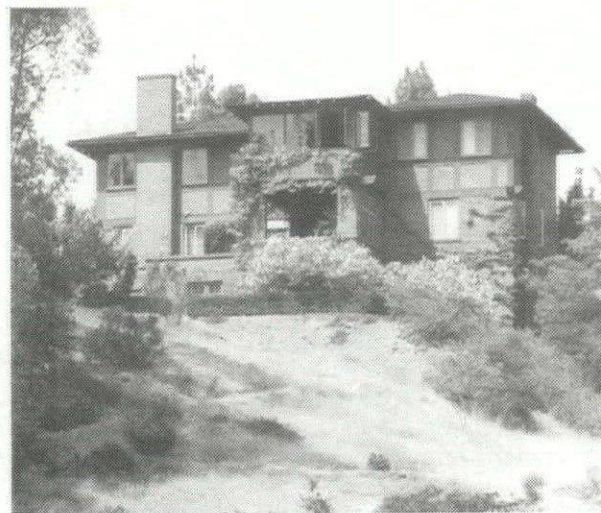
The tour includes Gill's major institutional work in La Jolla and his early Craftsman-style and later experimental residential work in San Diego. The country's leading experts on Gill will be on hand to discuss all aspects of his work with tour goers. These special guests include Marvin Rand, noted architectural photographer and historian, who is preparing his new book on Gill's work as a Modernist; John Reed, architect and historian, who knew Frank Lloyd Wright and Rudolph Schindler, and began photographing Gill's work in 1945, introducing it to architectural writer Esther McCoy; James Kelley-Markham, restoration architect on Gill's First Church of Christ Scientist; Clifford McMillan, project manager for the church

restoration; Vonn Marie May, landscape architect and historian; John Berley, SAH/SCC president; Merry Ovnick, professor, author and historian; Paul Johnson, restoration architect; Lucinda Eddy, historian and author; George Lentulo, Gill restoration contractor; and other historians, authors, archivists, and Gill homeowners.

In his writings and comments on architecture, Gill continually referred to three underlying concepts: simplicity, honesty and democracy. These concepts—rather than the esthetics of his buildings—tie him to the Arts and Crafts movement. These same concepts, though, were also tenets of Modernism. Though his early work exhibited a decidedly Craftsman character (albeit a stripped-down version), his work of the 1910s and 1920s can best be described as Cubistic. Gill's innovations, such as central vacuum systems, automated dishwashers, coved flooring, flush trim and tilt-up concrete construction, anticipated the Modern movement by almost 20 years. Today, many historians are re-examining Gill's work and his far-reaching influence, and categorizing him as one of the world's first Modernists.

Gill's own writings reveal a man deeply concerned with the social structure of America and the belief that architecture could contribute to his vision of democracy. He dared other architects to do simple work if they hoped to produce anything of great and lasting value. He strove to omit everything useless from a structural point of view and see the beauty of straight lines. He felt that the line, the arc, the circle and the square could be combined to create architecture that appealed to the masses. Unfortunately, the masses were not at all interested in the austere and puritanical lifestyle Gill's residences suggested. His work had to wait to be discovered decades later by proponents of high-art modernism.

You can discover the work of Irving Gill in this feature-filled all-day tour. See the tour schedule on the right for more information, and order form on Page 8 to reserve a space.



The Frederick R. Burnham house. (Photo: Marvin Rand)

IRVING GILL ON TOUR

Saturday, October 18th
Tour and Lecture Schedule

- * 8:15-9AM: Check-in at The Museum of Contemporary Art, San Diego
- * 9AM: *Irving Gill: The Romantic Modernist*, slide lecture with Marvin Rand
- * 10:30AM-Noon: Docent-led walking tour of Gill's La Jolla buildings: Ellen B. Scripps House, La Jolla Woman's Club, Scripps Playground and Recreation Center, The Bishop's School, George Kautz Residence
- * Noon-1:30 PM: Lunch (on your own)
- * 1:30-2:30PM: *The Restoration of a Gill Masterwork*, with Clifford McMillan and James Kelley-Markham, at First Church of Christ Scientist
- * 2:30-6PM: Walking and driving tour of Gill's residential work in San Diego. Docent-led tours of homes with guest speakers at each site.

Complete program is \$50 for SAH/SCC members; \$65 for non-members. Included are admission to all sites and lectures, discount coupons for lunch, refreshments, all-day parking in La Jolla, and a tour brochure including a map of Gill's work in La Jolla and San Diego. Books on Irving Gill and other architectural subjects will be available at a discount to tour-goers at locations on the tour.

For information on this tour, call Ted Wells, SAH/SCC board member and event chair, at 714.495.6009 or e-mail at tedwells@twmn.com. Tickets are available. Mail the form on Page 8.

A Message From the President

Let me begin by thanking those of you who mailed back the survey that came with your renewal notice. (Thank you for renewing your membership too!) The surveys are helping to provide insight about your priorities and expectations, and how we can better meet them. The survey results were compiled by SAH/SCC Board Member Sian Winship, and are printed below.

As this issue of SAH/SCC News goes to press, we are busy organizing the annual Membership Celebration for Sunday, November 16th, from 11AM to 4PM, at the Fred Harvey Restaurant in Union Station. This is our year-end celebration, which is free to the membership. See the announcement on page 3.

The self-guided tour of Irving Gill's legacy in La Jolla and Balboa Park in San Diego is going to be a relaxing yet very informative study of the region's first disciple of Louis Sullivan (and colleague of Frank Lloyd Wright). I believe that this is a long-overdue opportunity to experience a range of buildings that exhibit Gill's mastery of scale and proportion, and his search for "the true nature of placemaking" here in Southern California.

In addition, we have coordinated a trip to Great Britain to visit the works and workplaces of Charles Rennie Mackintosh and William Morris. This coincides with the exhibition at the Los Angeles County Museum of Art covering the art and architecture of Mackintosh and his wife, Margaret MacDonald (see review on page 7). As is the case with all great architecture, the magnificent play of light in space can only be fully appreciated and understood by being in it, surrounded by it.

Art in itself relies on being experienced. Architecture is designed for such purpose. This is one of the main reasons why we're here: to give you the chance to fill the space that architecture creates—to seek the brilliant spaces that define our sense of place.

I think, primarily, we all share in common the excitement of seeing what is happening around town in arts and architecture. We live in a region that is unrivaled in its quantity and variety, but here it requires a little more work to get there. And it always seems to be the case that once you do get there, you're reminded of how worthwhile that extra effort truly is!

—John Berley

AN OPEN DIALOGUE WITH MEMBERS

As part of our continuing efforts to make SAH/SCC a valuable and rewarding organization for all those who participate, the SAH/SCC board recently asked renewing members to fill out a brief questionnaire on SAH programs and benefits. We also asked members to tell us what kinds of events they would like us to sponsor in the future. Thanks to all of you who took the time to fill out the survey. Here's a brief look at the insightful survey results.

How did you learn about SAH/SCC?

Kudos members! The number-one way people hear about the organization is through their friends. Chances are if you enjoy the tours and events, you know someone else who will too. Help us build strength and diversity in our membership base by bringing a friend along or passing along your newsletter.

How could the newsletter be improved?

The response was loud and clear: It's great but sometimes it doesn't arrive as fast as it should! We hear you. Because we do have shorter lead times than most publications, we're able to get in more last-minute events. However, we are working on keeping up the level and amount of information as it gets to you in a more timely manner. We appreciate your patience while we get this under control.

What's the most valuable newsletter feature?

Members continually rated the Calendar of Events as the most valuable feature. We scour local and regional museums, events and organizations to bring our members the most comprehensive architectural calendar of its kind. There is an event of architectural interest going on somewhere almost every day, if you know where to look. And the place to look is clearly SAH/SCC News.

Tell us about yourself.

SAH/SCC enjoys a diverse membership base that includes historians, architects, urban planners, artists, designers, and a variety of people outside the profession who appreciate the architectural heritage of the Los Angeles area. Additionally, the organization draws members from up and down Southern California, from San Diego to the Inland Empire to the Central Coast. Our name "SAH/Southern California Chapter" identifies us as an organization dedicated to raising awareness of the architectural heritage in Los Angeles and beyond. In response to the requests of a number of survey respondents, SAH/SCC will keep a broader geographic perspective in mind as we develop events for the next year's calendar. A first step in this direction is the upcoming tour "Irving Gill: Fundamental Truths" in San Diego (see Page 1).

What kind of tours, lectures or events would interest you in the future?

The diverse nature of Southern California architecture and history was well represented in the diversity of member interests. The scope of suggestions ranged from craftsman to modernism, expressed an interest in the architectural design of the past 10 years, encompassed neighborhood heritage and regentrification, and explored the urban planning issues that face our area in the future. Subjects suggested for upcoming tours included Frank Lloyd Wright, John Lautner, Greene and Greene, and many, many more. There was also a surprising interest in landscape architecture. All of these excellent suggestions will be presented to the SAH/SCC Board and considered in the development of the event calendar for next year.

Lastly, we encourage all of our members to visit our web page. Those who do, love it. Not only is it a source for current information on tours and events, it offers links to other related sites. You'll find the site at <http://www.ccsf.caltech.edu/~mac/sah/index.htm>.

SAH/SCC NEWS is published bi-monthly by the Society of Architectural Historians/Southern California Chapter. Subscription is a benefit of membership.

Editor: Julie D. Taylor

Associate Editor: Felicia Molnar

Executive Assistant: Grace Samudio

Information and ads for the newsletter should be sent three weeks before the issue date.

Issue	Deadline
November/December 1997	October 10th
January/February 1998	December 10th

Please send all ad materials, notices of events, exhibitions and news—plus photographs—to the attention of the editor:

Julie D. Taylor, Editor
SAH/SCC News
P.O. Box 92224
Pasadena, CA 91109-2224
Newsletter telephone: 310.247.1099
Newsletter fax: 310.247.8147
Newsletter e-mail: jtaylorpr@usa.net

SAH/SCC Executive Board

President: John Berley
Vice President: Nancy Smith
Recording Secretary: Jennifer Minasian
Membership Secretary: Merry Ovnick
Volunteer Coordinator: Rebecca Kahn
Development Coordinator: Sian Winship
Preservation Officer: Grant Taylor
Internet Editor: Barbara Lamprecht
818.794.5878; mac@ccsf.caltech.edu
Publicist: Alison Cotter
Treasurer: Rina Rubenstein
Member at Large: Rochelle Dynes Mills
Member at Large: Ted Wells

<http://www.ccsf.caltech.edu/~mac/sah/index.htm>

SAH/SCC Advisory Board

Board Chair Jeff Samudio, architectural historian member to the State Historical Resources Commission; Ted Bosley, director of the Gamble House; Robert J. Chappel, construction management consultant; Ezequiel Gutierrez, attorney; Claire Rogger, aide to City Council Member Marvin Braude; Alan H. Rosenberg, attorney; Richard C. Rowe, architectural historian and former editor of SAH/SCC News.

Life Members:

Grant Barnes	Susan W. Monteith
Kathleen Bixler	Doug Moreland
Mary Dutton Boehm	Sara G. Muller Chemoff
Bill Bowling	Betsy Murchison
Ruth Bowman	Mark Nichols
Lynn Marie Bryant	Peter A. Nimmer
Bonnie Burton	John M. Nisley
David G. Cameron	Thomas O'Connor
Miriam Campbell	Anne Otterson
Sam Campbell	Helen Palmer
Robert Jay Chappel	C.E. Parker
Jeffrey Cook	Audree Penton
Stephen P. Danforth	Standish K. Penton
Tim Day	John August Reed
Astrid E. Ellersieck	Claire Rogger
Heinz E. Ellersieck	Richard Cayia Rowe
J. Richard Fare	Jeffrey B. Samudio
Donald R. Ferguson	Walter B. Silber
Gilbert Garatti	Patricia Simpson
Sukei Garatti	Cecilia Singer
Dr. & Mrs. Kenneth Geiger	Stanley H. Singer
Gordon Gilliam	Mark Slotkin
Joy Gilliam	Janann Strand
Paul Gleye	Vern Swansen
Stephen Harby	Lorenzo Tedesco
Eugene Hoggatt	Reg Thatcher
Shirley Hoggatt	M. Brian Tichenor
Elaine K. Sewell Jones	Mr. & Mrs. A. Tischler
Stephen A. Kanter	Maggie Valentine
Virginia Ernst Kazor	Harriette von Breton
Marilyn Kellogg	Robert D. Wallace
Theodora Kinder	John Wamke
Charles A. Lagreco	Lori Wamke
Ruthann Lehrer	Patricia A. Warren
Joyce P. Ludmer	Ron Watson
Randell L. Makinson	David R. Weaver
Christy Johnson McAvoy	John Welborne
Suzanne W. McCarthy	Joanne William
Elizabeth McMillan	Robert Winter
David C. Mincy	Mr. & Mrs. David Yamada
Le Roy Misuraca	Robert Young

Honorary Member: Robert Pierson



Downtown LA's historic Union Station is the site for the next SAH/SCC Members Celebration, November 16th.

ALL ABOARD FOR SAH/SCC MEMBERS CELEBRATION

ANNUAL MEMBERS EVENT: NOVEMBER 16TH, UNION STATION

SAH/SCC is busy preparing the annual Members Celebration. This year we're planning a special day of activities at Union Station, in the old Fred Harvey Restaurant, focusing on the theme "Los Angeles' Transportation Laboratory."

We chose this location because, without a doubt, it is one of the more successful public space in Los Angeles, and the city has much to be proud of in its great 1939 Union Station, built by Parkinson & Parkinson. It is the last of the nation's great train stations, completed just before the Second World War, at the zenith of the age of rail travel.

Please make plans to join us on Sunday, November 16th, from 11AM to 4PM. Enjoy a day of food, refreshments, a lecture or panel discussion, walking tours of Union Station and the MTA Plaza, and lots of stimulating conversation about Southern California.

This is a free event SAH/SCC is organizing for the membership. This invitation is extended to each member in good standing. Everyone is welcome, but if you're currently not a member of SAH/SCC then there will be a nominal charge to attend.

The details are still taking shape at this time, but plan to join us Sunday, November 16th, then we'll enliven, educate and maybe even entertain you in one of the most exhilarating and exclusive venues in Southern California.

We'll take you around the place, down to the Metro Red Line Subway Station and over to the MTA tower, just behind Union Station, where we'll explore the vast array of artwork and sculpture in the city's newest public space.

Fill out the form on the Page 8 and send it in to make your reservation so we'll know you're coming along for the ride.



A behind-the-scenes look at the Getty Center in Brentwood is among the special events awaiting those attending the SAH National Meeting in April 1998.



SAH ANNUAL MEETING LOS ANGELES, APRIL 15-19, 1998

As you read in the last issue, the 1988 national meeting of the SAH, which is to be held here from April 15th to 19th, will showcase the latest scholarship in the field of architectural history with paper sessions on topics ranging from historic gay and lesbian environments to Spanish Colonial architecture in LA. It will also be preceded with a special preservation conference on Wednesday, April 15th, which will focus on preservation issues in Los Angeles. The SAH meeting will open on Wednesday evening with a reception and opening remarks by conference co-chair Bob Winter at the Biltmore Hotel.

Following two-and-a-half days of paper sessions, the conference will end with more than a dozen tours, including a pair of two-day trips to San Diego and Santa Barbara led by SAH/SCC Life Members Richard Rowe and Stephen Harby. In addition, Saturday afternoon tours will include the Arts and Crafts houses of Pasadena, a stroll through contemporary Los Angeles gardens, and an inside look at a variety of creative design studios in West L.A., as well as excursions into the Hollywood Hills, Pacific Palisades, and Silverlake, which will visit the work of architects such as Frank Lloyd and Lloyd Wright, John Lautner, Rudolph Schindler, Richard Neutra, Harwell H. Harris, Ray Kappe, and many other noted Southern California architects. Saturday night there will be a special reception and behind-the-scenes tours of the new Getty Center in Brentwood. All-day tours on Sunday will examine historic and contemporary garden design, and the Spanish and Modernist traditions in Los Angeles.

SPECIAL CONFERENCE RATES FOR SAH/SCC MEMBERS

It has just been announced that members of local SAH chapters may register for the meeting at a special rate of \$100. This is \$65 less than the regular non-member's rate, and is the first time the national organization has given local chapter members such a discount opportunity. Chapter members will also have the option of purchasing a one-year special introductory membership to the national SAH at a 25% discount, or \$45. If you join now, you will receive the full program for the April meeting as soon as it comes out, as well as a year's subscription to the Journal of the Society of Architectural Historians and the SAH Newsletter. In addition, Annual Meeting volunteers will be allowed to attend all of the paper sessions free of charge.

Continue to watch this space for bi-monthly updates of events and happenings. There will be many opportunities to volunteer to help make this the best national SAH meeting ever. To get involved contact Ken Breisch at 310.458.5984 (e-mail: kbreisch@sciarc.edu) or Stephen Harby at 310.450.8239. For information regarding membership in the national SAH, call the Chicago office at 312.573.1365.

UTILITAS FIRMITAS VENUSTAS UTILITAS FIRMITAS VENUSTAS UTILITAS FIRMITAS VENUSTAS
UTILITAS FIRMITAS VENUSTAS UTILITAS FIRMITAS VENUSTAS UTILITAS FIRMITAS VENUSTAS
UTILITAS FIRMITAS VENUSTAS UTILITAS FIRMITAS VENUSTAS UTILITAS FIRMITAS VENUSTAS
UTILITAS FIRMITAS VENUSTAS UTILITAS FIRMITAS VENUSTAS UTILITAS FIRMITAS VENUSTAS

SAH/SCC EVENTS 3



See this Craftsman home on "Looking Back, Moving Ahead," a tour of West Adams on September 21st.

september

2, 4, 6, Tuesday, Thursday, Saturday

Coronado Touring. Walking tours every Tuesday, Thursday and Saturday. Glorietta Bay Inn; 11AM-12:30PM; \$6. Gerry MacCartee, 619.435.5892.

4, Thursday

Pasadena Art Walk. Self-guided, Old Town open house. The Armory Center for the Arts; 6-10PM. 818.792.5101.

4-5, Thursday-Friday

Effective Project Management. Two-day course with project manager Jim Click. 9/4-5, Ontario; 9/9-10, Oxnard; 9/11-12, Burbank; 9/15-16, LA. National Seminars Group; \$395. 800.682.5073.

6, Saturday

Open House. Landscape Architecture Program; UCLA Extension, 10995 Le Conte Ave., LA; 9AM-Noon; free. 310.825.9414.

6, Saturday

Venice: More Than a Beach. Walking tour. Neighborhood Place Project; 10AM; \$10; res. req.; leave name and address for brochure. 818.790.6643.

6, Saturday

A Visit With Neighbors: West Adams/Scarff. Walking tour with SAH/SCC Board Member Merry Ovnick, CSU Northridge. Los Angeles City Historical Society; 10AM; \$50; res. req. Irene Tresun, 213.936.2912.

6, Saturday

SOMA-Yerba Buena Gardens. Walking tour. The Foundation for San Francisco's Architectural Heritage; California Historical Society, 678 Mission St., SF; 10-11AM; \$3-5; res. req. 415.441.3004.

6, Saturday

Claremont Walking Tour. Claremont Heritage; meet at Sumitomo Bank, 102 Yale Ave.; 10AM-Noon; \$5; res. req. 909.621.0848.

6, 13, 20, 27, Saturday

Downtown LA. Walking tours of various downtown landmarks. L.A. Conservancy; 10AM-Noon; \$5; res. req. 213.623.2489.

6, 13, 20, 27, Saturday

Googie Tours. Choice of The San Gabriel Valley, Behind the Orange Curtain, Coffee Shop Modern and More, Cocktails 'N' Coffee Shops, with preservationist John English. \$34; res. req. 213.980.3480.

7, Sunday

Home, House, Habitat. Family workshop with artist Benny Ferdman. Skirball Cultural Center, 2701 N. Sepulveda Blvd., LA; 2-4PM. 310.440.4500.

7, 14, 21, 28, Sunday

Pacific Heights Walking Tour. The Foundation for San Francisco's Architectural Heritage; 12:30PM; \$5. 415.441.3004.

7, 21, Sunday

Charles Rennie Macintosh: A Modern Man. Screening of BBC-produced video on the renowned Scottish artist's life. Brown Theater, LACMA, 5905 Wilshire Blvd., LA; 2PM. 213.857.6528.

8, Monday

Behind the Magic. Program on mechanics of fiber optics. Designers Lighting Forum; 6PM; \$5-10; res. req. 310.476.9200.

10, Wednesday

25+45=70. Lecture with SCI-Arc founder and architect Raymond Kappe, Kappe Architects, Pacific Palisades. Southern California Institute of Architecture, 5454 Beethoven St., LA; 7:30PM; free. 310.574.1123.

12, Friday

Artists and the Westward Expansion. Lecture with Sidney Williams. Palm Springs Desert Museum, 101 Museum Dr., Palm Springs; 11AM. 619.325.7186.

12, Friday

Topography of Terror. Lecture with Swiss architect Peter Zumthor. Southern California Institute of Architecture, 5454 Beethoven St., LA; 7:30PM; free. 310.574.1123.

13, Saturday

Old Pasadena. Walking tour. Pasadena Heritage; Arroyo Seco Building, 117 E. Colorado; 9-11:30AM; \$5; res. req. 818.793.0617.

13, Saturday

Charles Rennie Mackintosh and the Glasgow Arts and Crafts. Lecture with Prof. Donald Covington. Friends of the Marston House; Thornton Theatre, Marston House, San Diego; 10-11:30AM; \$12-15. 619.280.3579.

13, Saturday

Ennis-Brown House Tours. Frank Lloyd Wright's 1924 house. Friends of the Ennis-Brown House; Trust for Preservation of Cultural Heritage, 2655 Glendower Ave., LA; one-hour tours 11:30AM-3:30PM; \$5-10; res. req. 213.668.0234.

14, Sunday

Sunday Open Sunday. Family workshop on metal tooling with artist Ron Baeza. Pico Aliso Gardens, 500 S. Pecan St., LA; 2-4PM; free. 213.485.4474.

14, Sunday

Afternoon With Balcony Press. Book talks with authors Merry Ovnick, Los Angeles: *The End of the Rainbow*; Abigail Gumbiner, Vacant Eden; Anne Cosner and Robert Berger, *The Last Remaining Seats*; Margaret Leslie Davis, *Bullocks Wilshire*; Jeanette Thomas, *Images of the Gamble House*. Sullivan and Goss Books, 7 East Anapamu St., Santa Barbara; 3:30PM; free. 805.730.1460.

14, Sunday

Reality of Illusion. Lecture with artist John Cederquist on his exhibition of furniture. Oakland Museum of California, 1000 Oak St.; 4PM. 510.238.2200.

14, Sunday

Western Vernacular. Reception for photographer John Kiewit. Sullivan and Goss Gallery, 7 E. Anapamu St., Santa Barbara; 5-7PM; free. 805.730.1460.

15, Monday

SOHO Annual Meeting. Save Our Heritage Organization, San Diego. 619.297.9327.

15, Monday

CSI Certification Courses. Six-week course or individual lectures on becoming a CDT (Construction Document Technician). AIA/OC; \$10 each, or \$135 for series; 6:30PM. Royce Wise, 714.261.1100.

16, Tuesday

Holy Land: A Suburban Memoir. Book discussion with author D.J. Waldie. Urban Inversion Books, 8246 Santa Monica Blvd., LA; 7:30PM; free. 213.654.8265.

17, Wednesday

Perspectives on Quality Craftsmanship. Lecture with McCarthy Construction Co. Committee on Architecture for Health, AIA/LA, Pacific Design Center, 8687 Melrose Ave., Ste. M3, LA; 4PM; \$10. Al Rodin, 310.837.2997.

17, Wednesday

Two Steps Forward, One Step Back. Lecture with architect Henry Smith-Miller, Smith-Miller and Hawkinson, NYC. Southern California Institute of Architecture, 5454 Beethoven St., LA; 7:30PM; free. 310.574.1123.

18, Thursday

Masters of Architecture. Lecture by Enrique Norten, TEN Arquitectos, sponsored by AIA/LA and LACMA. Bing Theater, Los Angeles County Museum of Art, 5905 Wilshire Blvd., LA; 6:30PM; \$5-12; res. req. 310.785.1809.

18, Thursday

Charles Rennie Macintosh: A Modern Man. Screening of BBC-produced video on the renowned Scottish artist's life. Brown Theater, Los Angeles County Museum of Art, 5905 Wilshire Blvd., LA; 7PM. 213.857.6528.

18, Thursday

The First Angelinos: The Gabrielino Indians of Los Angeles. Lecture with historian William McCawley. Rancho Los Cerritos Historic Site, 4600 Virginia Rd., Long Beach; 7PM; \$3. 562.570.1755.

18-21, Thursday-Sunday

Route 66 Rendezvous. Vintage automotive Street fair commemorates historic route. San Bernadino Visitors Bureau. 800.TO.RTE.66.

19, Friday

LA Winners Gala. Event recognizes winners of design competitions from LA. Architectural Foundation of Los Angeles; Museum of Contemporary Art, 250 S. Grand Ave., LA. 213.389.6490.

19-21, Friday-Sunday

Los Angeles Art Show. Fine Art Dealers Association exposition. John Wooden Center, UCLA; 9/19 opening benefit, 6-10PM, \$100; 9/20, 11AM-7PM; 9/21, 11AM-5PM; \$10. 800.656.9278.

19, 26, Friday

Award-Winning Design Solutions: Exemplary Projects-Universal Applications. One-day workshop on preservation design and application to other buildings. 9/19, Oakland; 9/26, LA. California Preservation Foundation; \$65-95. 510.763.0972.

20, Saturday

Charles Rennie Macintosh: A Symposium. Program with international scholars Roger Billcliffe, Alan Crawford, Pamela Robertson and Christian Witt-Döring. Los Angeles County Museum of Art, 5905 Wilshire Blvd., LA; 9:45AM-4:30PM; \$15-25. 213.857.6528

20, Saturday

Historic Downtown Long Beach. Walking tour. Long Beach Heritage Coalition; Historical Society of Long Beach, 418 Pine Ave., LB; 10AM; \$3; res. req. 562.493.7019.

21, Sunday

Looking Back, Moving Ahead. Historic homes walking tour in West Adams. The Western Heights Neighborhood Association, meet 20th and 21st St., LA; 10AM-4PM; \$15. 213.658.4060.

23, Tuesday

Towards A Simpler Way of Life: The Arts and Crafts Architects of California. Book discussion with author Robert Winter. Urban Inversion Books, 8246 Santa Monica Blvd., LA; 7:30PM; free. 213.654.8265.

24, Wednesday

Jack Smith Community Enrichment Awards. Luncheon program with honorees from LA Dodgers, The Da Camera Society, Whitsett Foundation and LA Times. Historical Society of Southern California; The Biltmore Hotel; \$50-60; res. req. 213.222.0546.

24-28, Wednesday-Sunday

The Architecture of Eastern Virginia. 1997 Domestic Study Tour. Society of Architectural Historians, 1365 N. Astor St., Chicago, IL; \$800. 312.573.1365.

24-October 2

Complete Course on Facilities Management. Two-day seminar with facility manager Al Goldberg. 9/24-25, LA; 9/29-30, Anaheim; 10/1-2, San Diego. Keyes Productivity Center; \$395. 800.821.3919.

25-27, Thursday-Saturday

The House We Live In. Annual Envisioning California Conference with speakers, including SF Mayor Willie Brown, on the future of community. The Center for California Studies, California State University, Sacramento; Capitol Plaza Holiday Inn, Sacramento; \$50-100. 916.278.6906.

27, Saturday

Carpinteria: A Secret Hide-Away. Walking tour with Rahla Hall, director of Urban Studies at USC. Neighborhood Place Project; 1PM; \$10; res. req.; leave name and address for brochure. 818.790.6643.

27, Saturday

Evening With Balcony Press. Book talks with authors Merry Ovnick, Los Angeles: *The End of the Rainbow*; Abigail Gumbiner, Vacant Eden: *Roadside Treasures of the Sonoran Desert*; Anne Cosner and Robert Berger, *The Last Remaining Seats*; Movie Palaces of Tinseltown; Margaret Leslie Davis, *Bullocks Wilshire*; Jeanette Thomas, *Images of the Gamble House*; *Masterwork of Greene and Greene*. Vroman's Books, 695 E. Colorado Blvd., Pasadena; 6PM; free. 626.449.5320.

27, Saturday

The Contemporary Art Ball. MOCA masked ball fund-raiser. Museum of Contemporary Art, 250 S. Grand Ave., LA; 8PM; \$75-150. 213.621.1703.

28, Sunday

Hello Again Eco Fest. Displays and demonstration on earth-friendly stuff. Barnsdall Arts Center, 4800 Hollywood Blvd., LA; 10AM-5PM; free. 213.485.4581.

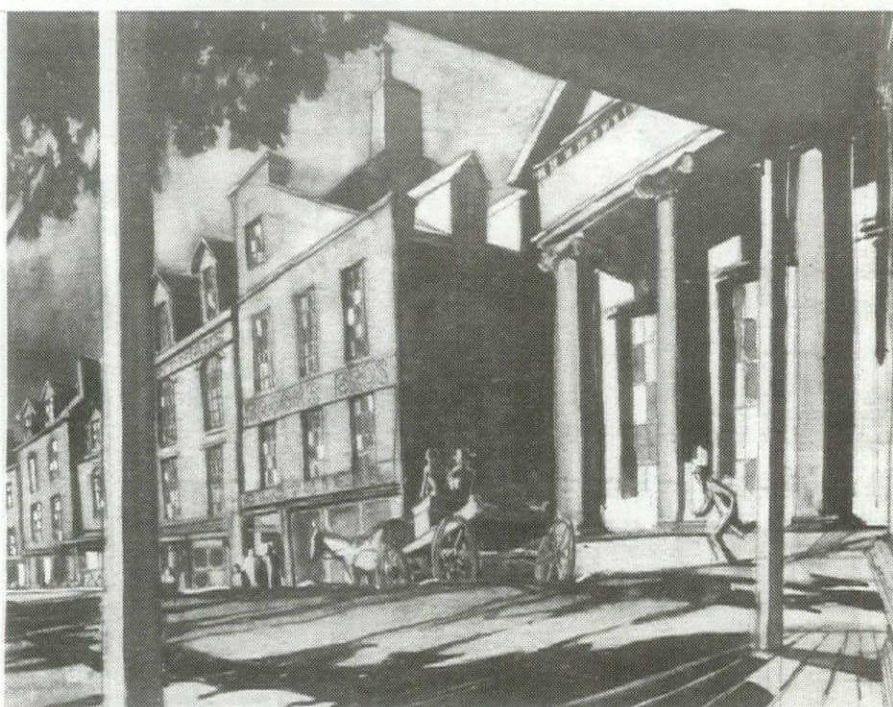
30, Tuesday

Construction Industries Awards. Luncheon program giving Lifetime Achievement Awards from the Chamber of Commerce Construction Industries Committee. Los Angeles Area Chamber of Commerce; Sheraton Grand Hotel; 11:30AM; \$60; res. req. 213.580.7585.

november preview

16, Sunday

SAH/SCC EVENT
Los Angeles' Transportation Laboratory. Annual SAH/SCC members celebration. Union Station, Downtown LA; See Page 3 for details. Call 800.9SAHSCC for details.



Movie set drawings (this one from "Gone With the Wind") are on display at the Academy of Motion Picture Arts and Sciences in Beverly Hills through October 5th.

Academy of Motion Picture Arts & Sciences
8949 Wilshire Blvd., Beverly Hills.
310.278.5673.

From Script to Screen: The Art of Production Design, through October 5. Two-part installation about production design for the movie industry. Includes fully-constructed experimental set where tricks of the trade are revealed.

The Architecture Gallery at SCI-Arc
5454 Beethoven St., LA. 310.574.1123.
Threads, Thresholds and Terrains, September 22–October 3. Exhibition of the far-reaching influence of women on the profession of architecture through more than 50 works by women graduates of SCI-Arc.

Assistance League of Southern California
Encino. 213.469.1973.
Design House '97, October 1–November 2. This year's house is a country English-style home built 30 years ago and located on a portion of the original Al Jolson Estate.

Autry Museum of Western Heritage
4700 Western Heritage Way, LA.
213.667.2000.
Western Wonderlands: Touring America's National Parks, through September 21. Multimedia exploration of the history and significance of national parks, including photos, maps, Native American artifacts and travel souvenirs.

Banning Residence Museum
401 East M St., Wilmington. 310.548.7777.
Photographs of Joseph Brent Banning, through September 1. Recently discovered photos of visual record of 19th-century life in Southern California.

Barnsdall Arts Center Gallery
4800 Hollywood Blvd., LA. 213.485.4581.
Hello Again! A New Wave of Recycled Art and Design, September 24–November 16. Exhibition showcasing more than 300 works of art, fashion, furnishings and crafts made from recycled materials.

California Heritage Museum
2612 Main St., Santa Monica.
310.392.8537.
The California Home—The Arts & Crafts Movement in Southern California, 1895–1920, September 20–February 1. Interior decorative arts and furnishings by Stickley, Greene and Greene, Lambert, van Erp, and others.

Couturier Gallery
166 N. La Brea Ave., LA. 213.933.5557.
Richard J. Neutra, October 17–November 29. Exhibition of original architectural drawings by Neutra, featuring his revolutionary and iconographic designs.

de Saisset Museum
Santa Clara University, Santa Clara.
408.554.4529.
First Californians as Seen by Edward Curtis, ongoing. Photography selections from the collection.

The Doctor's House Museum
1601 W. Mountain, Brand Park, Glendale. 818.242.7447.
The Fell-White Collection. Family heirlooms from the 19th century, including clothing and mementos, donated to the Glendale Historical Society.

Gamble House
4 Westmoreland Pl., Pasadena.
818.93.3334.
Tours of Greene and Greene house, Thursday–Sunday, Noon–3PM.

George and Anna Marston House
3525 7th Ave., San Diego. 619.298.3142.
A 1905 home designed by Irving Gill and William Hebbard sits upon an almost five-acre estate, including historic gardens. Tours: Friday–Sunday, Noon–3:45PM.

Greystone Mansion
905 Loma Vista Dr., Beverly Hills.
310.285.2537.
Built on a 12-acre site, by Gordon B. Kaufman in 1928, Greystone Mansion features extensive grounds and gardens for public viewing daily.

Hollyhock House
Barnsdall Art Park, 4808 Hollywood Blvd., LA. 213.662.7272.
Steven Ehrlich, *Architect*, through December 31. Exhibition of recent work.

Tours of Frank Lloyd Wright Hollyhock house, Wednesday/Sunday, 1, 2, 3PM.

The Huntington Library, Art Collections and Botanical Gardens
1151 Oxford Rd., San Marino.
818.405.2141.
Directing Nature: The Engineering of Our World, September 23–January 11. The history of man's attempts to direct nature as seen in rare books, manuscripts, and photographs from the museum's collections.

Archibald Knox, October 10–January 4. Art nouveau metalwork by the principal designer for Liberty & Co. of London, 1898–1908.

Los Angeles County Museum of Art
5905 Wilshire Blvd., LA. 213.857.6000.
The Photomontages of Hannah Höch, through September 14. German Dadaist photo-collages focusing on gender issues in Weimar Germany.

Charles Rennie Mackintosh, through October 13. The first retrospective of the 20th-century architect and designer, comprising more than 250 works of drawings, architectural models, furniture and architectural re-creations.

Harold E. Edgerton's *Stroboscopic Photographs*, through October 13. Recent acquisitions of 28 prints by the pioneer of stop-action photography.

Ralph Bartholomew, Jr., October 1–January 31. Bartholomew's photography marks the intriguing territory where the commercial merges with art.

Museum of Contemporary Art, LA
250 S. Grand Ave., LA. 213.626.6222.
Joseph Cornell: *Connections to the Permanent Collection*, through September 14. Object and film collages by the assemblage artist including a selection of recently donated works.

Summer Nights at the MOCA, through September 25. Acclaimed and emerging jazz musicians, also featuring free museum admission, wine and beer tasting, and Art talks, on selected nights. Thursdays, 5–8PM.

Museum of Contemporary Art, SD
700 Prospect St., La Jolla. 619.454.6985
Geoffrey James: *Running Fence*, September 20–January 4. Canadian photographer whose subjects range from ancient Roman roads to utopian architecture.

Museum of San Diego History
Balboa Park, SD. 619.232.6203.
Robes of China, through September 14. Embroidered silk robes from 1644 to 1911.

Oakland Museum of California
1000 Oak St., Oakland. 510.238.2200.
The Art of John Cederquist: Reality of Illusion, September 11–November 30. Features 40 pieces of furniture created between 1981 and 1997, using traditional forms as starting points for wry investigations into the nature of reality and illusion.

Orange County Museum of Art
Newport Beach. 714.759.1122.
Frank Lloyd Wright: *Designs for an American Landscape*, September 27–November 23. More than 150 original drawings in only West Coast venue, organized by Library of Congress.

Palm Springs Desert Museum
101 Museum Dr., Palm Springs.
619.325.7186.
American Roads and Bridges: Photographs from the Permanent Collection, September 9–November 30. Modern American life revealed in contemporary photographs.

The West in American Art: From the Bill and Dorothy Harmsen Collection of Western Americana, through November 30. Exhibition linking five themes that reflect various key subjects for the 19th-century American West.

Rancho Buena Vista Adobe Gallery
640 Alta Vista Dr., Vista. 760.639.9164.
Bill Rafnel, November 5–January 4. Fiber artist presents hand-woven damask wall pieces.

San Francisco Museum of Modern Art
151 3rd St., SF. 415.357.4000.
Disruptive Postmodern Media, through September 16. Media art raising questions about the fundamental precepts of our world, with work by Nam June Paik, Dara Birnbaum, and General Idea.

Shiro Kuramata 1934–1991, through December 2. A retrospective of the Japanese minimalist designer includes examples of his furniture pieces, blueprints, sketches, and photographs of shop, boutique and restaurant interiors.

Encounters With Modern Art, October 4–January 4. Around 100 paintings from major European schools, selected from the Rothschild Family Collections.

Police Pictures: The Photograph as Evidence, October 17–January 20. Historical and contemporary photographs taken as police evidence.

Emigré Magazine, through December 2. A selection from *Emigré Magazine's* most astonishing and innovative issues.

Humane Technology: The Eames Studio and Beyond, ongoing. Re-installation of the Eameses' conference room, additional designs and films, plus work by designers who share the Eameses' vision.

Skirball Cultural Center
2701 N. Sepulveda Blvd., LA.
310.440.4500.
Temporary Quarters: Artists Build for Shelter and Celebration, through January 4. Works celebrate and commemorate the Jewish harvest festival, examining shelter, hospitality and thanksgiving.

Southwest Museum
234 Museum Dr., LA. 213.221.2164.
Casas Grandes—Style Pottery: New Dimensions, through September 21. Contemporary ceramics from the village of Mata Ortiz.

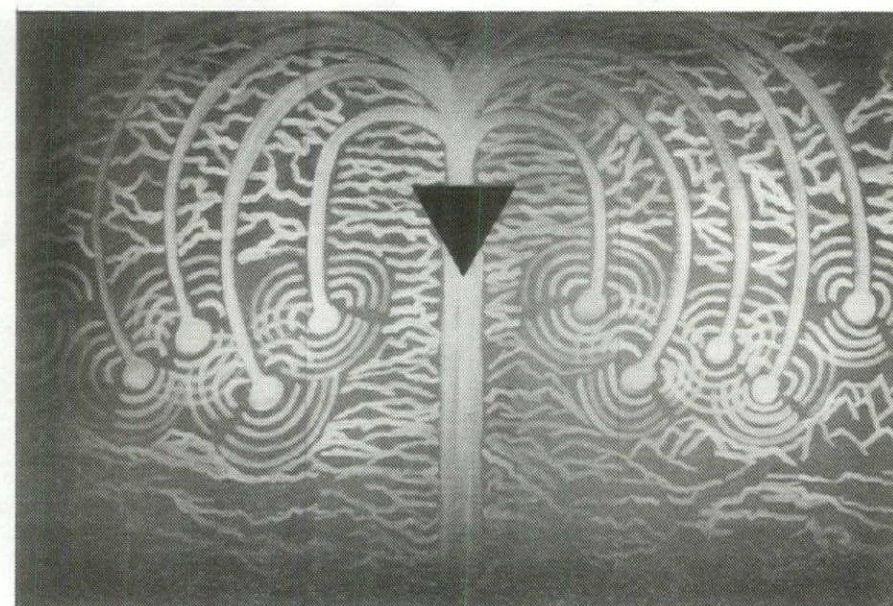
The Unbroken Thread: Conserving the Textile Traditions of Oaxaca, October 25–February 1. More than 35 hand-woven textiles from Mexico.

UCLA at the Armand Hammer Museum of Art and Cultural Center
10899 Wilshire Blvd., LA. 310.443.7020.
Scene of the Crime, through October 5. A wide range of media highlighting the artistic practices that mimic the forensic approach, viewing art as if it were evidence in 75 works from 40 artists, including Ed and Nancy Kienholz, Ed Ruscha, Chris Burden, Vija Celmins, James Luna, Nayland Blake, D-L Alvarez and Sharon Lockhart.

UCLA Extension Design Center
1338 Third St. Promenade, SM.
310.825.9414.
19th Annual Landscape Architecture Student Show, September 26–October 24. Thesis presentations by fourth-year landscape architecture students

UCLA Fowler Museum
UCLA Campus, LA. 310.206.0306.
Class Quilts, L.A., 1996–1997, through October 5. Twenty quilts by LA children.

Villa Montezuma, Jesse Shepard House
1925 K St., San Diego. 619.239.2211.
Tours of 1887 Queen Anne-style house designed by Comstock and Trotsche, Saturday–Sunday, Noon–3:45PM.



A tree-like form decorates the Tabernacle by artist Sam Erenberg as part of "Temporary Quarters: Artists Build for Shelter and Celebration" on view at the Skirball Cultural Center through January 4th. (Photo: Wayne McCall)

SAH/SCC MEMBER PROFILE

VIRGINIA KAZOR, LIFE MEMBER

SAH/SCC Life Member Virginia Kazor is the historic site curator for Los Angeles' Cultural Affairs Department, where her focus is the restoration and preservation of historic structures such as Simon Rodia's Watts Towers and Frank Lloyd Wright's Hollyhock House. A noted expert on Wright, Kazor teaches architecture at UCLA Extension and is a member of the Board of Directors of the Taliesin Fellows.

Her interest in architecture developed early when, as a young child, Virginia remembers touring homes with her parents on Sundays after church. "My parents really instilled in me a life-long appreciation of architecture and the environment around me," says Kazor. She enrolled in USC's School of Architecture, but soon discovered that she "couldn't design worth a damn," and turned her sights to art history. "I wanted to study architecture history, but there were no programs on the West Coast at the time," remembers Kazor. "So I picked the next best thing."

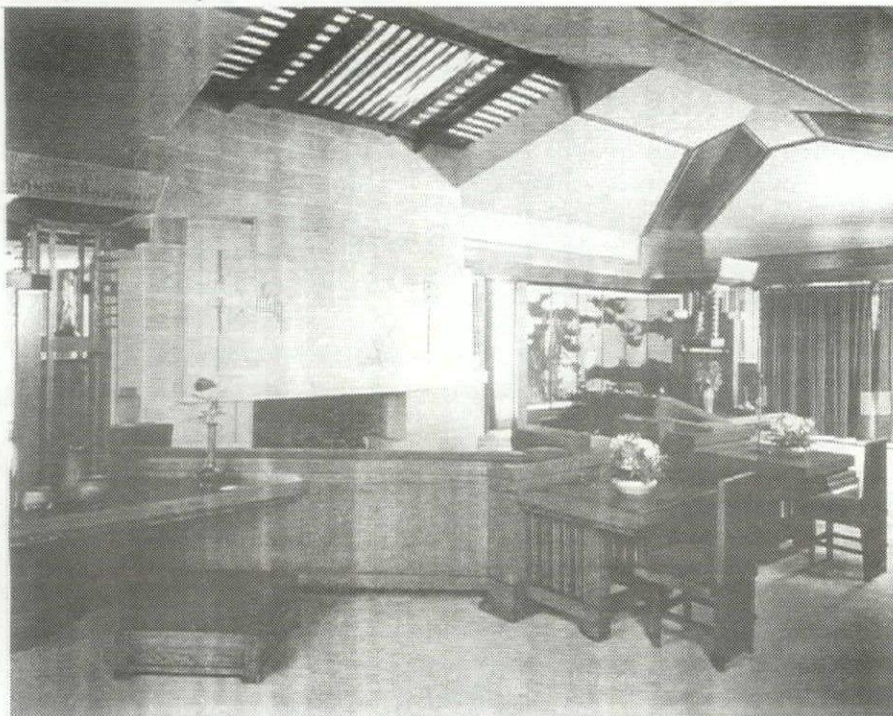
She graduated in 1963 and joined the staff of the Los Angeles County Museum of Art as an assistant to Maurice Tuchman, curator of Modern Art. From there, she went on to curate the Frederick R. Weisman Collection before becoming the City of Los Angeles' first art curator. At the Municipal Art Gallery, she organized "Edmund Teske: Photographic Work for Frank Lloyd Wright" in 1974, and collaborated with Randell Makinson on a Green and Green show in 1976, and with Jeff Chusid on a Frank Lloyd Wright show in 1988.

She currently oversees the \$1 million restoration of Watts Towers, which suffered severe damage in the Northridge earthquake. In addition, Virginia has made significant progress with Hollyhock House's interior, including restoring original furniture, lighting and color schemes, done with the help of the LA Chapter of the American Society of Interior Designers, and with funding for the sofas provided by Friends of Hollyhock House.

Perhaps her proudest achievement is preserving the historic architecture in her own backyard. Six months after purchasing a 1909 craftsman house in the Wilton district, Kazor learned that the city was planning a street widening project that would result in the demolition of six historic homes. She rallied her neighbors and succeeded in nominating the area as a National Register Historic District. "The residents are really committed to the neighborhood," says Virginia, who has lived there since 1970, and recounted the success story at the California Historic Preservation Conference in 1983.

She was immersed in preservation issues in the early '80s, regularly lecturing on the topic and sitting on various boards. She was a member of the board of the Los Angeles Conservancy from 1983 to 1984, and was president of SAH/SCC from 1981 to 1984. It was during her tenure at SAH/SCC that the board initiated life membership as a method of endowing the organization. "It is extremely important for members to support the organization and for the organization, in turn, to reach out to the community," says Virginia. "Involving young people in architecture is paramount. They are the future of preservation. If we can help children to appreciate architecture now, they will carry that knowledge with them for life. This, I believe, is the only hope for cities like Los Angeles."

—Alison Cotter



Frank Lloyd Wright's Hollyhock House restoration was led by Virginia Kazor, with assistance from ASID/LA and Friends of the Hollyhock House. (Photo: Marvin Rand)

DON'T MISS MACKINTOSH

If you aren't lucky enough to be joining SAH/SCC on its Mackintosh and Morris tour of Scotland and England this October, then going to LACMA is the next best thing to being there. Make the trip to the Los Angeles County Museum of Art for the glorious exhibition *Charles Rennie Mackintosh*, on view through October 13th. The range of Mackintosh's work—from tentative yet strong pencil sketches to full-scale re-creations of interiors—left this exhibition viewer weak-kneed, despite the fact that I'd seen the show in its New York installation as well. Drawings, plans, models, furniture, murals, and floral and landscape watercolors display Mackintosh's "celebration of life," as one of the curators put it. The re-creations impart a feeling of tangible immediacy. You can visualize Miss Cranston's tea room patrons, and almost hear the clinking of china and the chatter of ladies' voices. See the events listings for lecture and film schedule, or call LACMA for information at 213.857.6000.

—Julie D. Taylor

PRESERVATION ALERT

Preservation Alert was created to inform you of local sites that are in danger. To submit sites for listing, send information on site, brief description of situation, and number to call to get involved. Photographs are always appreciated. Send to SAH/SCC News, P.O. Box 92224, Pasadena, CA 91109. Sites will be listed as space allows.

Tramway Gas Station by Albert Frey is still in danger despite the Class 1 Historical Site designation given in June. The City Council, which de-certified it after undue pressure from the developer, is considering "alternatives to on-site preservation." Call Brad Dunning, a commissioner at Palm Springs Historic Sites Preservation Board, at 619.320.2213.

Lincoln Memorial Museum in Gettysburg, VA, was designed by Richard and Dion Neutra in the early 1960s, and is in danger of being demolished by the National Park Service. The Park Service says it is obtrusive, inadequate for conservation, and difficult to maintain. You may send a letter to the National Park Service, Washington, DC 20036, and contact Dion Neutra at 213.666.1806.

Hotel del Coronado, is a National Historic Landmark, California State Historic Landmark, on the National Register of Historic Places, and was just named one of the 500 most important buildings ever built in the United States from the 10th Century to the present. However, the site is facing drastic changes to its landscape and auxiliary buildings. A proposed convention center and hotel project will cause the destruction of the original brick power plant and laundry complex, block the ocean-side views with new hotel and restaurants; block the north-side views with a parking structure, necessitating the removal of original plantings. The new structures will be built within 50 feet of the foundation of the hotel, blocking all views into and out of the Del. To get involved, call Save Our Heritage Organization at 619.297.9327.

Long Beach Naval Station and Shipyard, is the subject of an Environmental Impact Statement/Environmental Impact Report being conducted by the Navy and the City of Long Beach for the disposal and reuse of the Naval Complex. KEA Environmental, a San Diego-based environmental planning firm has put together a team, led by EDAW, Inc., a landscape architecture, environmental planning and urban design firm, which also includes architect Wayne Donaldson, who is currently working with the Navy on the reuse of the San Diego Naval Training Center, as well as Brad White of Clarion Associates, who specializes in historic preservation planning. SAH/SCC has been invited to participate with the design and planning team conducting the adaptive use feasibility study.

SAH/SCC ORDER FORM

Irving Gill Tour — October 18th

_____ member space(s) at \$50 each = \$ _____
 _____ non-member space(s) at \$65 each = \$ _____

Annual Members Celebration — November 16th

_____ member space(s) = \$ _____
 _____ non-member space(s) at \$15 each = \$ _____

All events filled on a first-come, first-served basis.

SAH/SCC Membership Benefits:

- Subscription to bi-monthly SAH/SCC News
- Member prices for SAH/SCC events
- 20% discount at the Gamble House shop
- Annual *The Dr. David Gebhard Review*
- Discounts on selected items at Urban Inversions
- Volunteer activities
- Opportunity to arrange and coordinate events
- Annual meeting
- Life Members are listed in each issue of SAH/SCC News

Membership Categories:

- _____ \$35 Individual Member (\$15 for each addition name at same address)
- _____ \$20 Student (with copy of current I.D.)
- _____ \$100 Patron (up to 2 names at same address)
- _____ \$500 Life Member (one-time contribution)
- _____ \$750 Individual Event Sponsor
- _____ \$1500 Corporate Event Sponsor

TOTAL: \$ _____

Name _____

Street Address _____

City _____

State _____ Zip _____

Daytime Phone _____

Evening Phone _____

Make checks payable to **SAH/SCC.**
 P.O. Box 92224
 Pasadena, CA 91109-2224
 800.9SAHSCC

CPF PRESERVATION DESIGN AWARDS CALLS FOR ENTRIES

The California Preservation Foundation (CPF) announces the Call for Entries for its 1998 Preservation Design Awards competition. Submissions may be made by owners, architects, engineers, planners, landscape architects, archaeologists, specifiers, contractors, craftsmen, architectural historians, organizations, students, or other engaged in historic preservation activities. Projects must be located in California, or in the case of a report of study, must deal with California subject. Projects must have been completed between June 30, 1992, and November 30, 1997. The seven categories are Restoration; Rehabilitation/Adaptive Re-Use; Preservation/Stabilization; Compatible Additions to Historic Structures and Contextual In-Fill Projects; Cultural Resource Studies, Reports and Computer Software; Craftsmanship/Preservation Technology; Archaeological and Cultural Landscape Projects. Submissions are due November 18, 1997; winners notified by January 15, 1998; awards ceremony in Los Angeles in February 1998. For entry forms, contact CPF, 405 14th St., Ste. 1010, Oakland, CA 94612; 510.763.0972; fax 510.763.4724.

LLOYD WRIGHT'S FIRST COMMISSION: THE WEBER HOUSE, 1921

The affluent Mr. Weber knew Frank Lloyd Wright's work in Chicago. He wanted a Wrightian house here in Los Angeles. With Frank in Japan working on the Imperial Hotel, the commission went to son Lloyd, commencing the son's brilliant career. Sited in an old cosmopolitan neighborhood near Wilshire & Wilton, the Weber House is intact, but with restoration work necessary. The classic Prairie Style residence includes: 3 bedrooms & 2 baths on potentially parklike grounds. \$299,000.00 for immediate sale.

OPEN HOUSE:
SEPT. 7 AND SEPT. 14
 or for immediate appointment please
 call: Crosby Doe or Adeline Green
 310.275.2222

**MOSSLER DEASY
& DOE**
 213 . 275 . 2222

Welcome New SAH/SCC Members

NEW LIFE MEMBERS

Suzanne W. McCarthy
 Mark Nichols
 Helen Palmer

NEW PATRONS

Pamela Burton
 Ron Rector

NEW MEMBERS

Skip Balaban
 Frank J. Bator
 Timothy J. Brandt
 Shannon M. Carroll
 Harry Clein
 Sheila Batsheva DeCora
 Patricia L. Dennis
 Kent Dickson
 Jane Douglas
 Marshall Feldman
 James Finlay
 Jocelyn Gibbs
 Mike Hilford
 Pamela Heath Michaud
 Wallace L. Neff
 Pam O'Connor
 Bret Parsons
 Ellen Phillips
 Kathleen Church Plummer
 Johanna Ramires
 Molly Reid
 Nena Rutherford
 Corrine Shukartsi
 David Yorkin

CARING FOR ARCHITECTURE

Free educational brochure from The American Institute for Conservation of Historic and Artistic Works for historic homeowners and others who care for built structures. Contact AIC, 1717 K St., NW, Ste. 301, Washington, DC 20006; 202.452.9545; fax 202.452.9328; InfoAIC@aol.com.

4th Annual California Art Auction

**Santa Barbara
Historical Museum**
 Santa Barbara, California

*A benefit auction of
 donated and consigned works
 by important historical
 and contemporary
 California artists.*

**Saturday
 November 8, 1997
 1:00 pm**

John Moran
 Auctioneer

for information or catalogue,
 Telephone (805) 966-1601
 FAX (805) 966-1603

DOCENT TOUR GUIDES NEEDED

Rancho Los Alamitos Historic Ranch and Gardens is seeking individuals who love to work with children or enjoy gardens, history and architecture. Tour guides are needed to lead adults and children in individual and group tours of the barns, gardens, and adobe ranch house that comprise this 7.5-acre site. Training includes outstanding lectures by nationally renowned historians, natural scientists, landscape designers and cultural writers. For more information call Claudia Jurmain at 562.431.3541.

ERRORS AND OMISSIONS

Several members remarked at the incredible resemblance of "Irving Gill" as shown in the last newsletter to Henry Greene. In fact, it was Greene. Sorry for the mistake.

Included in the newly formed SAH/SCC Advisory Board is attorney Ezequiel Gutierrez. See Page 2 for the full list of Advisory Board members.