

SAH/SCC

SOCIETY OF ARCHITECTURAL HISTORIANS SOUTHERN CALIFORNIA CHAPTER

post office box 92224, pasadena, ca 91109-2224

800.9SAHSCC

http://www.cacr.caltech.edu/~mac/sah/index.htm

NEWS
1999
may/june 1999

watts towers tour	page 1
president's letter	page 2
architects' own offices	page 3
may and june events	pages 4-5
architectural exhibitions	page 6
bookmarks	page 7

Watts Towers as interpreted by photographer Ires Parson.

U.S. Postage
FIRST CLASS MAIL
PAID
Pasadena, CA
Permit No. 740

WATTS TOWERS RESTORATION SAH/SCC BEHIND-THE-SCENES TOUR SATURDAY, JUNE 26TH

They've been described by enthusiasts as "eerie, mysterious and magical, a singular, brilliant and quirky vision from the brain of one man: Simon Rodia." *The Encyclopedia of Great Buildings* calls the towers "idiosyncratic, exuberant monumental urban art, created by one inspired individual."

Everyone who visits the Watts Towers has an opinion about these fantastic landmarks south of downtown Los Angeles. SAH/SCC is pleased to offer **Watts Towers Restoration: A Behind-the-Scenes Tour** of this southern California icon on Saturday, June 26th. The towers are now undergoing an extensive renovation and will re-open to the public in 2002. SAH/SCC has arranged for a private tour of the towers during this time. We will learn about the current work on the towers and the structural and artistic challenges faced by the restoration team. This tour will offer rare insight into the historical preservation efforts made on one of the most unique objects in our built environment.

The tour begins at Union Station, downtown Los Angeles, at 10AM, where we will board the Metro Blue Line for the quick trip south to the towers. (It's a short, four-block walk to the site from the station.) There, we will learn of the towers' history, the story of its creator—Simon Rodia—and the restoration work. We then board the Blue Line for the return trip to Union Station. The tour ends around 2PM. Cost for the tour, including transportation, is \$12 for SAH/SCC members; \$20 for non-members. The ticket price includes a donation made in your name to the Watts Towers Preservation Fund.

Part folk-art, part urban monument, the towers took 33 years to complete. When Rodia finished them at the age of 74, he walked away, leaving behind his adopted home of Los Angeles and his mysterious towers.

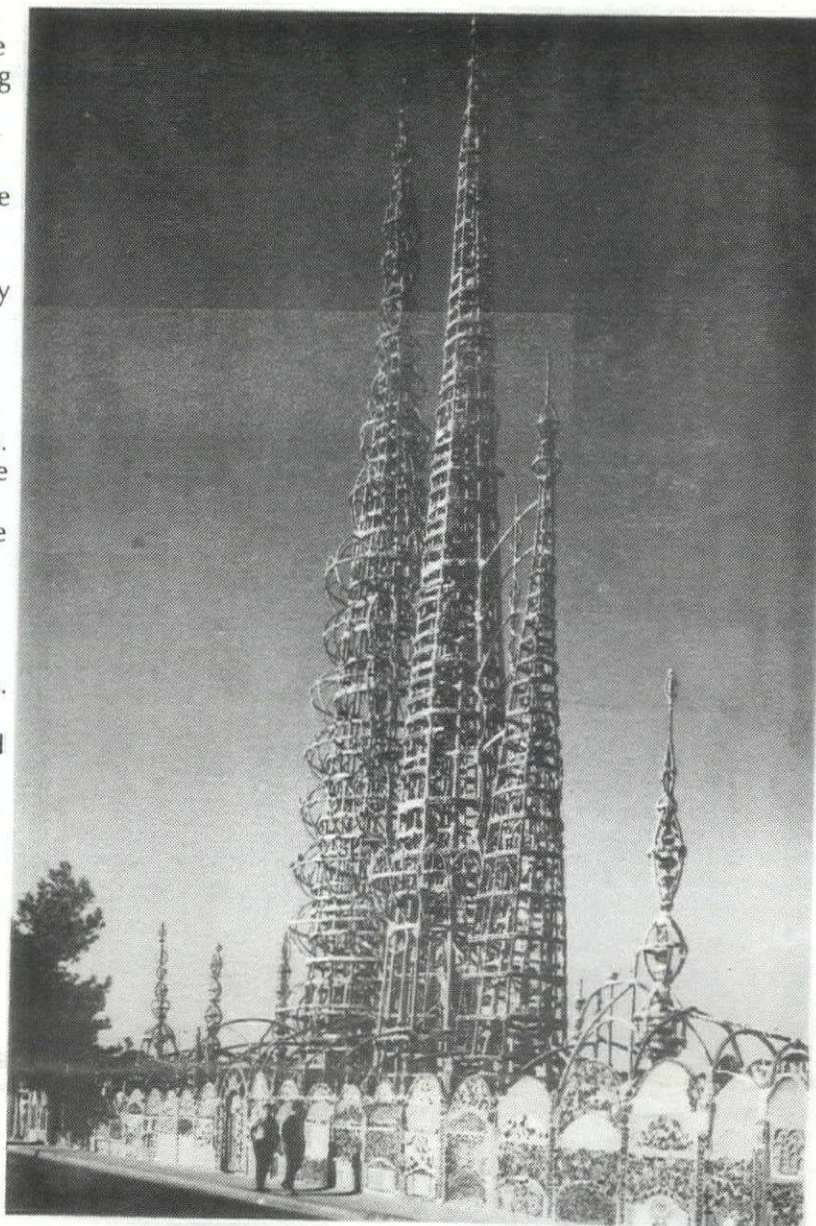
Rodia, a tile setter by trade, worked on the towers from 1921 to 1954. He built the towers on his property using salvaged steel rods, dismantled pipes, bed frames, and cement, and covered them with bottle fragments, ceramic tiles, china plates, and more than 70,000 seashells. He constructed a total of 17 structures, the tallest of which is nearly 100 feet, without the use of scaffolding or power equipment. Working solo with only his own genius and creativity, he used household tools, and a window washer's belt and buckle to bolster himself up to the high levels.

Rodia's inspiration for the towers, and the extreme effort that went into building them, remain mysteries today. It has been said that the towers resemble ship masts or cathedral spires. He came to the U.S. on a ship from Italy at the age of 12 and it's thought that this may have been an influence in the construction of the towers. While in Italy, he would, of course, have seen the spires of great cathedrals. Other possible influences are the hats of certain Italian clergy that Rodia would have seen as a boy. The Italian Feast of Saint Paulinus, which includes a parade of tall narrow spires may also be represented in the towers. Throughout his life, like many artists, Rodia remained a private man, never commenting on his creation. The only motivation he ever gave for the construction of the Towers was his desire to "create something big."

After Rodia left Los Angeles in 1954, a group of artists maintained the structures. The towers survived the earthquakes of the early 1930s, but were threatened with demolition in 1959 when the L.A. Department of Building and Safety labeled them "unsound structures."

Members of the public protested, and a "pull test" was conducted on the tallest spire to determine the building's fate. Only one seashell fell off, and the structure was saved. Watts Towers was designated a Cultural Heritage Monument by the city in 1960.

Today, the property surrounding the towers is home to the Watts Towers Arts Center of the Los Angeles Cultural Affairs Department. The Arts Center hosts a variety of art exhibits, lectures,



The Watts Towers built by Simon Rodia, as photographed by Julius Shulman.

studio workshops for children, and an annual jazz festival. With community, corporate and civic support, the towers are being restored.

The SAH/SCC visit to the Watts Towers is a rare opportunity for a behind-the-scenes look at the towers and the current restoration efforts. Space on this tour is very limited, so reserve your place now by using the form on Page 8. For more info, contact SAH/SCC president Ted Wells at 949.495.6009, or tedwells@twmn.com.

SAH/SCC NEWS

A Message From the President

One goal of the Executive Board during our term is to expand the reach of SAH/SCC. One of the ways we have done this is through tours and lectures that span the geographic bounds of southern California. During the past year we've been to Redlands, San Diego, Orange County, and Ventura. This month we will be in Ojai. The response from you, our members in these areas, has been great. We have sold out each of these events.

In June, we are venturing to another area in southern California that is as unknown to many of our members as any place—Watts. It's not an area that is architecturally rich, but it is an area that is culturally rich, with the Watts Towers as its beacon. The current restoration work at the towers anticipates the transformation of the towers into a major Los Angeles tourist destination. To me, the greatest benefit of urban living is cultural diversity. Don't miss this opportunity to expand your own reach into the unexplored regions of LA.

We're busy filling up the rest of this year's SAH/SCC schedule with interesting events. We will be announcing tours and lectures related to the new cathedral in downtown Los Angeles by Rafael Moneo, a look at swimming pools and their sociological effect on southern California architecture, visits to architect's own offices, a tour examining the influence of Mexico on contemporary architecture, and a lecture series by authors on architecture. We're also introducing a series of mini-tours, like the Watts Towers tour, that focus on one building or structure and provide a behind-the-scenes look at its design and history.

In addition to public events, we will continue to plan events just for SAH/SCC members. We encourage you to get your friends involved by having them join us, too. Our goal is to have 2000 members in the year 2000. This isn't a matter of simply creating a larger organization. We see our increased membership as a by-product of our outreach into all areas of southern California. Since our tours are self-supporting (the cost of the ticket covers the cost of the tour), your membership dues pay for the newsletter and help pay for free educational programs that we sponsor, such as Discover Architecture.

It is with your membership and involvement in SAH/SCC events that we can meet our goals. We believe that, in the long run, the best form of preservation of our architectural heritage comes about from education. We thank you for your support and look forward to seeing you throughout southern California.

—Ted Wells

LETTER TO SAH/SCC

In our *Dialogues With Design* article on *Landscape Architecture*, we stated that our speaker, Ruth Shellhorn was the landscape architect for Disneyland. She writes to clarify her involvement. No misstatement was intended by SAH/SCC.



Ruth P. Shellhorn, FASLA

Thank you for sending me your March Newsletter in which my background appeared, however I was distressed to read that I was the landscape architect for Disneyland, and I would like to set the record straight.

When Walt Disney decided to create Disneyland and when the art directors came up with the master plan, he asked his good friend and neighbors Jack and Bill Evans to landscape the park. They owned Evans and Reeves Nursery in Beverly Hills.

I would hate to have Bill Evans or any others who knew the circumstances think that I was taking credit for all the landscape work as landscape architect. I was consulting landscape architect and site planner for the areas of pedestrian traffic.

Jack and Bill landscaped the burms and all the outlying areas, including the jungle. When the central areas were to be developed, they were asking different landscape architects to do different areas or "Lands." Walt became worried

that with so many different fingers in the pie, the result would not be cohesive whole and he asked his good friend Welton Becket to recommend a landscape architect who would work with the Studio and act as a liaison between it and the site. I had worked on a number of projects with Welton, and was very pleased when he recommended me.

I started working with the art director for the entrance, town square, Main Street, and the hub. I made suggestions, but he, being swamped with work, asked me to make a drawing to show them what I meant. The first site plan was the hub. A meeting was held with Walt and all the art directors. There was an art director for each of the five "Lands." The drawing was approved. I then proceeded to do the site design for all areas of pedestrian traffic. I did not make planting plans. I selected the trees and key elements, saw that they were properly placed, listed plant materials to be used and worked with Jack and Bill to develop the landscape.

The engineer who was doing the grading plans could not keep up the pace (the entire Park was built in a year and a half) so I even directed the tractor driver in soil placement around the Castle; and worked with the head carpenter to layout the walks. As Walt met with us every Saturday and had new ideas he wanted begun on Monday, I spent all weekend until way after midnight working on plans or sketches. The pace was frantic, but Walt's personality made everyone believe nothing was impossible.

I would very much appreciate having a statement go out to your membership who received your newsletter stating my position so that no ill feelings will be caused. Thank you for your consideration.

Very truly yours, Ruth P. Shellhorn, FASLA

SAH/SCC NEWS is published bi-monthly by the Society of Architectural Historians/Southern California Chapter. Subscription is a benefit of membership.



Editor: Julie D. Taylor
Assistant Editor: Linda Won
Internet Editor: Barbara Lamprecht
 818.794.5878; mac@ccsf.caltech.edu
Executive Assistant: Grace Samudio
 http://www.cacr.caltech.edu/~mac/sah/index.htm

Information and ads for the newsletter should be sent three weeks before the issue date.

<i>Issue</i>	<i>Deadline</i>
July/August 1999	June 10th
September/October 1999	August 10th

Please send all ad materials, notices of events, exhibitions and news—plus photographs—to the attention of the editor:

Julie D. Taylor, Editor
 SAH/SCC News
 P.O. Box 92224
 Pasadena, CA 91109-2224
 800.9SAHSCC (800.972.4722)
 Newsletter telephone: 310.247.1099
 Newsletter fax: 310.247.8147
 Newsletter e-mail: jtaylorpr@usa.net

SAH/SCC Executive Board

President: Ted Wells
Vice President: Merry Ovnick
Secretary: Marla Alvarez
Development Officer: Sian Winship
Preservation Officers: John Berley and Grant Taylor
Publisher: Alison Cotter
Treasurer: Rina Rubenstein
Volunteer Coordinator: Rebecca Kahn
Advisory Board Liaison: Ezequiel Gutierrez
Education Coordinator: Anthony Denzer
Members-at Large: John Ellis; Rebecca Halbreich; Cara Mullio

SAH/SCC Advisory Board

Ted Bosley	Claire Rogger
Ken Breisch	Richard C. Rowe
Stephen Harby	Nancy Smith
Elizabeth McMillian	Robert Winter
Rochelle Mills	

Life Members:

Grant Barnes	Elizabeth McMillian
Kathleen Bixler	Le Roy Misuraca
Mary Dutton Boehm	Susan W. Monteith
Bill Bowling	Doug Moreland
Ruth Bowman	Sara G. Muller Chernoff
Lynn Marie Bryant	Mark Nichols
Bente Buck	Peter A. Nimmer
Gerald E. Buck	John M. Nisley
Bonnie Burton	Thomas O'Connor
Miriam Campbell	Anne Otterson
Sam Campbell	Helen & David Palmer
Robert Jay Chattel	C.E. Parker
Jeffrey Cook	Audree Penton
Stephen P. Danforth	Standish K. Penton
Astrid E. Ellersieck	John August Reed
Heinz E. Ellersieck	Claire Rogger
J. Richard Fare	Richard Cayia Rowe
Donald R. Ferguson	Jeffrey B. Samudio
Gilbert Garretti	Walter B. Silber
Dr. & Mrs. Kenneth Geiger	Patricia Simpson
Gordon Gilliam	Cecilia Singer
Joy Gilliam	Mark Slotkin
Raymond Girvigan	Janann Strand
Paul Gleye	Vern Swansen
Stephen Harby	Lorenzo Tedesco
Eugene Hoggatt	Reg Thatcher
Shirley Hoggatt	M. Brian Tichenor
Elaine K. Sewell Jones	Mr. & Mrs. A. Tischler
Rebecca Kahn	Maggie Valentine
Stephen A. Kanter, MD	Robert D. Wallace
Virginia Ernst Kazar	John Warnke
Marilyn Kellogg	Dr. Patricia A. Warren
Theodora Kinder	Ron Watson
Charles A. Lagreca	David R. Weaver
Ruthann Lehrer	John Welborne, Esq.
Joyce P. Ludmer	Dr. Robert Winter
Randell L. Makinson	Mr. & Mrs. David Yamada
Christy Johnson McAvoy	Robert Young
Suzanne W. McCarthy	

Honorary Member: Robert Pierson

**KAPPE HOME TOURS
TO BENEFIT SCI-ARC
MAY 1ST AND MAY 8TH**

Two days of touring homes by Raymond Kappe, FAIA, legendary LA Modern architect and founder of the innovative Southern California Institute of Architecture (SCI-Arc), will benefit the school he started more than 25 years ago. Many houses will be open in Pacific Palisades, Brentwood, Santa Monica Canyon, and Manhattan Beach, including Kappe's own Rustic Canyon home, which has been named a Los Angeles Cultural Heritage Monument.

The **Kappe Home Tour** takes place over two weekends: Saturday, May 1st, and Saturday, May 8th. For two days of tours, including docent guides, tour hand-out, and conversations with the Kappes, the cost is \$200, (\$125 for one day), which benefits the SCI-Arc Kappe Library Video Archives. Call SCI-Arc at 310.574.1123 for reservations and information.

This comprehensive tour of homes spanning the 1960s to the 1990s will truly be a once-in-a-lifetime opportunity to experience Kappe's work. Since the 1950s, Kappe's work has incorporated the spirit of California Modern tradition, and has reached new heights in formal and technological expression.

"The medium through which [Kappe] speaks most eloquently is the house," writes architect John M. Johansen in the foreword to *Themes and Variations: House Design by Ray Kappe* by Michael Webb, recently published by Images Publishing. The 70-year-old architect continues his practice, Kappe Architects/Planners, in Pacific Palisades.

**JERUSALEM ARCHITECTURE:
OLD AND NEW
SAH/SCC Co-SPONSORED LECTURE:
MONDAY, MAY 3RD**



Old: Citadel of David, Jerusalem, built first century BC; fell 70 AD. (Photo: Julie D. Taylor)

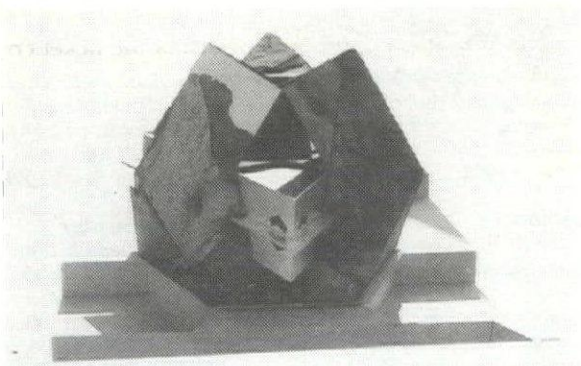
George Anselivicius, FAIA, will be presenting "Jerusalem Architecture: Old and New" at the Museum of Architecture's Mondays at the Museum series on May 3rd at 7PM. This series is co-sponsored by SAH/SCC.

Anselivicius' lecture and slide presentation explores the relationship between the ancient and contemporary architecture of Jerusalem. Most of the city's surviving ancient architecture is religious in nature. The architecture of Jerusalem, both old and new, addresses the city's unique position at the crossroads of Judaism, Christianity, and Islamic faiths. Much of the work seeks to establish an order where there is none, or reflects the chaotic and changing sociological nature of the city. In either case, the work in

Jerusalem is thought-provoking and unique in the world of architecture.

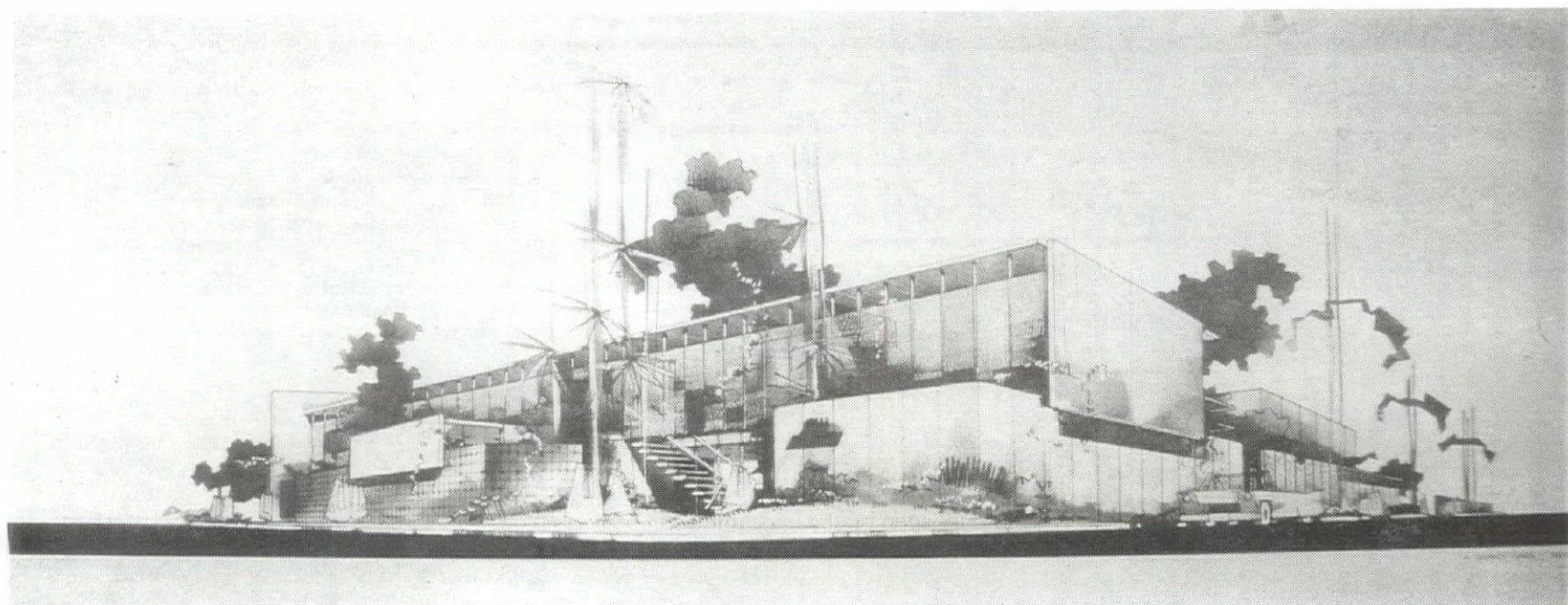
Anselivicius has lived and worked in many countries including Israel, India, and the US. He was the dean of the schools of architecture at Harvard and Washington University, (St. Louis). Currently he is Professor Emeritus in the architecture school at the University of New Mexico, Albuquerque.

Cost of the lecture is \$5, which will benefit educational programs at the Museum of Architecture. For more information, reservations and to confirm the location of this lecture, which will take place in San Juan Capistrano, please call the Museum at 949.443.5288.



New: The Synagogue, Jerusalem, by Zvi Hecker, 1988.

**SPACE MAKING SPACE: ARCHITECTS' OWN OFFICES
SAH/SCC TOUR: SATURDAY, SEPTEMBER 25TH**



A. Quincy Jones and Frederick E. Emmons built this Santa Monica Boulevard office for their practice in 1955. It now houses the offices of Frederick Fisher & Partners Architects. (Rendering by Kaz Nomura, courtesy AQ Jones Archive.)

How does the environment an architect creates for his or her own practice relate to ideas of making space? This and other questions delving into the mind of architects will be looked at during *Space Making Space: Architects' Own Offices*, Saturday, September 25th. On this first session in an ongoing series of on-site tours, we

will visit offices in Santa Monica, Venice, and West Los Angeles. Other sessions will look at offices in the downtown area as well. The tours are being organized by SAH/SCC Board Member John Berley.

As this tour may be of especial interest to students, SAH/SCC is offering it free to student

members (already joined, or newly joined at the \$20 student rate). SAH/SCC member price is \$30; non-members are \$45. We are in the process of confirming offices to visit, and will keep you posted in upcoming newsletters. In the meantime, you can reserve your spot with the order form on Page 8.

UTILITAS FIRMITAS VENUSTAS UTILITAS FIRMITAS VENUSTAS UTILITAS FIRMITAS VENUSTAS
UTILITAS FIRMITAS VENUSTAS UTILITAS FIRMITAS VENUSTAS UTILITAS FIRMITAS VENUSTAS
UTILITAS FIRMITAS VENUSTAS UTILITAS FIRMITAS VENUSTAS UTILITAS FIRMITAS VENUSTAS
UTILITAS FIRMITAS VENUSTAS UTILITAS FIRMITAS VENUSTAS UTILITAS FIRMITAS VENUSTAS

SAH/SCC NEWS 3



Ray Kappe House designed in 1965 is featured in the two-day Kappe Home Tours on May 1st and 8th. (Photo: Julius Shulman)

may

1, Saturday

The Splendors of Rome. Lecture on art, architecture, and interior design of ancient, Renaissance, and Baroque Rome with historian Jody Greenwald. UCLA Extension, 121 Dodd Hall, Westwood; 9AM-4PM; \$50-75; res. req. 310.825.9971.

1, Saturday

Village Walking Tour. Tour of the downtown village area of Claremont, historic Victorians, college and commercial buildings. Claremont Heritage, California Bank and Trust, 102 Yale Ave., Claremont; 10AM; \$5; res. req. 909.621.0848.

1, Saturday

SOMA-Yerba Buena Gardens. Walking tour with the Foundation for San Francisco's Architectural Heritage. California Historical Society, 678 Mission St., SF; 10-11AM; \$35; res. req. 415.441.3004.

1, Saturday

Venice Secret Garden Tour. The fifth annual self-guided walking tour of the Secret Gardens of Venice hosted by landscape designer Jay Griffith. Neighborhood Youth Association's Las Doradas Children's Center; 717 California Ave., Venice; 10AM-4PM; \$50. 310.450.2554.

1, 4, 6, Saturday, Tuesday, Thursday

Coronado Touring. Walking tours every Tuesday, Thursday, and Saturday. Glorietta Bay Inn; 11AM-12:30PM; \$6. Gerry MacCartee, 619.435.5892/ Nancy Cobb, 619.435.5993.

1, 8, Saturday

Ray Kappe Home Tour. Two-day tour of homes by legendary LA Modern architect and founder of SCI-Arc Ray Kappe, including houses in Pacific Palisades, Brentwood, Santa Monica Canyon, Manhattan Beach, and Kappe's own home to benefit SCI-Arc. 11AM-5PM; \$125-200; res. req. 310.574.1123.

1, 8, 15, 22, 29, Saturday

Downtown LA. Walking tours of various downtown landmarks. L.A. Conservancy; 10AM-Noon; \$5; res. req. 213.623.2489.

1, 8, 15, 22, 29, Saturday

Turistorica. Walking tours with Architectural Foundation of Santa Barbara and Citizens Planning Foundation of Santa Barbara. City Hall Steps, De La Guerra Plaza, SB; 10AM-Noon; \$5. 805.965.6307.

1, 8, 15, 22, 29, Saturday

Googie Tours. Choice of The San Gabriel Valley, Behind the Orange Curtain, Coffee Shop Modern and More. Cocktails 'N' Coffee Shops with preservationist John English. \$34; res. req. 213.980.3480.

2, Sunday

Art and Architecture. Self-guided tour of distinguished area homes and art collections followed by a reception at the museum. Orange County Museum of Art, 850 San Clemente Dr., Newport Beach; 10AM-4PM; \$50; res. req. 949.759.1122.

2, Sunday

Garden Tours: Stroll Among the Blooms. Tour of John Temple's garden and the 1931 landscape by Ralph Cornell. Rancho Los Cerritos Historic Site, 4600 Virginia Rd., Long Beach; 2PM; free. 562.570.1755.

2, Sunday

Kirtland K. Cutter Long Beach Salon and Tour. Home tour and salon featuring three Kirtland Cutter homes in the Los Cerritos area of Long Beach. Women's Architectural League; Long Beach Heritage; 2-5PM; \$25-30; res. req. 562.493.7019.

2, Sunday

Chamber Music in Historic Sites: Pacifica String Quartet. Naumburg Award-winning quartet at Pasadena's San Rafael Winery Building designed by Prudent Beaudry (1867), and Doug Ewing and Rob Hunter (1993). Da Camera Society; 2 and 3PM; \$35-63; res. req. 310.954.4300.

2, 9, 16, 23, 30, Sunday

Pacific Heights Walking Tour. The Foundation for San Francisco's Architectural Heritage; 12:30PM; \$5. 415.441.3004.

3, Monday

SAH/SCC EVENT Jerusalem Architecture: Old and New. George Anselivicus speaks at the Museum of Architecture. 7PM; \$5; res. req. 949.443.5288. See Page 3 for details.

6, Thursday

Pasadena Art Walk. Self-guided, Old Town open house. The Armory Center for the Arts; 6-10PM. 626.792.5101.

6, Thursday

Cinematic City. Architectural lecture with John Rock. Woodbury Community Design + Urban Research Center, 6520 Hollywood Blvd., LA; 7PM. 323.461.6486.

7, Friday

Fridays at Newschool. Lecture with San Diego Union Tribune journalist Roger Showley. Newschool of Architecture, 1249 F St., San Diego; 6PM; free; res. req. 619.235.4100.

7, Friday

The Work of John Lautner: An On-Site Study Tour. Lecture and tour of John Lautner's work with architect David Hertz. UCLA Extension; Peter Ueberroth Bldg., 10945 Le Conte Ave., Westwood; Friday lecture, 7-9PM; Sat. tour, 8:30AM-6PM; \$175; res. req. 310.825.9971.

7-9, Friday-Sunday

Los Angeles Modernism Show. The 12th annual show with top designs and artwork of the past 100 years, from art deco tables and 1950s lounge chairs to Austrian glass and vintage posters. Santa Monica Civic Auditorium, 1855 Main St., SM; Friday benefit, 6-9PM, \$50; Sat-Sun, 11AM-5PM, \$10. 310.455.2886.

8, Saturday

Old Pasadena. Walking tour. Pasadena Heritage; 9AM; \$5; res. req. 626.441.6333.

8, Saturday

Preservation Week Opening Reception. Reception with City and County Landmarks Commissioners, historic property owners, local and state preservationists, architects, planners, and designers. Santa Barbara Preservation Week; Casa de la Guerra, 15 E. de la Guerra St.; 5:30-7:30PM; free. 805.965.6307.

8, 16, Saturday, Sunday

Kids Draw Architecture. Children of all ages explore their artistic talents at both Mission Historical Park and Plaza de la Guerra. Santa Barbara Preservation Week; Santa Barbara Architectural Foundation; free. 805.965.0560.

8-16, Saturday-Sunday

Santa Barbara Preservation Week. A Celebration to recognize and promote the knowledge and appreciation of the area's unique historic resources and preservation efforts through planned activities and events. Santa Barbara Trust for Historic Preservation; res. req. 805.966.9719.

9, Sunday

Francheschi House and Park Open House and Workday. Members of Save Francheschi House work on one of the City of Santa Barbara's neglected jewels. Santa Barbara Preservation Week; 1510 Mission Ridge Rd.; free. 805.962.8007.

10, Monday

Dana Cuff. Lecture with UCLA associate professor of architecture Dana Cuff. UCLA Campus, Gallery 1220, 1302 Perloff Hall, LA; 6:30PM; free; res. req. 310.825.7858.

11, Tuesday

Ganna Walska Lotusland Tour and Lecture. Tour and lecture by Executive Director of Lotusland Steven Timbrook on 37-acres of exotic plants in Montecito. Santa Barbara Preservation Week, Santa Barbara; \$15; res. req. 805.969.9990.

12, Wednesday

The Heart of Montecito. Thirty-minute walking tour of the hub of early Montecito village life at the corner of San Ysidro and East Valley roads. Santa Barbara Preservation Week; Montecito History Committee, Montecito Hall, 1469 E. Valley Rd.; 10AM-12PM; free; res. req. 805.682.9451.

13, Thursday

Historic Preservation in Santa Barbara. Lecture and slide show with Santa Barbara City Historian Christine Palmer and President of the California Preservation Foundation Michael Crowe. Santa Barbara Preservation Week, Santa Barbara Historical Society Museum, 136 E. de la Guerra St.; \$7.50-10. 805.966.1601.

13, Thursday

Masters of Architecture. Lecture with landscape architect Peter Walker, FASLA, of Peter Walker & Partners. Los Angeles County Museum of Art, Bing Theater, 5905 Wilshire Blvd., LA; 6:30PM; \$5-12; res. req. 310.785.1809.

15, Saturday

A Day in Greece. One-day program explores ancient architectural wonders with art gallery director Irini Vallera-Rickerson. UCLA Extension, 121 Dodd Hall, LA; 9AM-4PM; \$50-75; res. req. 310.825.9971.

15, Saturday

Textiles in Changing Times: Identity and the Remaking of Tradition. Symposium on textile change and identity drawing on issues and images featured in the Fowler's four concurrent textile exhibitions, with 10 renowned scholars. UCLA Fowler Museum, LA; 9AM-5PM; free. 310.825.8655.

15, Saturday

Gardens and Landscapes: What Does it Matter? Lecture with landscape architects Andrew Spurlock and Martin Poirier on the Getty and other projects. Newschool of Architecture, 1249 F St., San Diego; 9:30AM; \$3. 619.235.4100.

15, Saturday

Historic Downtown Long Beach. Walking tour. Long Beach Heritage Coalition; Historical Society of Long Beach, 418 Pine Ave., LB; 10AM; \$4-5; res. req. 562.493.7019.

15, Saturday

The Miracle Mile: A New Walking Tour. Two-hour tour of the Wilshire district and Art Deco buildings. The Art Deco Society of Los Angeles, LA; 10AM; \$5-10; res. req. 310.659.3326.

15, Saturday

Treasures of the Tuscan Hillside. Lecture with Jane Friedman on the treasures preserved in San Gimignano, Cortona, and Arezzo. Leo S. Bing Theater, LA County Museum of Art, 5905 Wilshire Blvd., LA; 1PM; free. 323.857.6512.

16, Sunday

Lockhart Home Tour. Tours of four Beverly Hills estates designed by Barbara Lockhart, Chasen's Restaurant, and PDC showrooms, to benefit the ASID/LA Scholarship Foundation and the National Cancer Prevention Fund/AMC Cancer Research. ASID, 8687 Melrose Ave., LA; 10AM-5PM; \$75; res. req. 323.654.7449.

16, Sunday

Family Festival. A day of celebration with performances, storytelling, art-making workshops, and gallery activities. The J. Paul Getty Center, LA; 10AM-6PM; free; res. req. 310.440.7300.

16, Sunday

10th Annual Museums of the Arroyo Day: An Informal Old California Good Time. The Museums of the Arroyo—Heritage Square Museum, Lummis Home and Garden, Southwest Museum, The Gamble House, and Pasadena Historical Museum—celebrate the art and historical legacies of Highland Park and Pasadena. 11AM-5PM; free. 213.740.8687.

16, Sunday

Pearl Chase Society Historic House Tour. Tour of homes designed by architects Brown, Smith, Craig, as well as others on the Upper East Side of Santa Barbara. Santa Barbara Preservation Week; Pearl Chase Society, 11AM-4PM; \$30. 805.682.4415.

17, Monday

Joan Ockman. Lecture with Columbia University director of American Architecture. Gallery 1220, 1302 Perloff Hall, LA; 6:30PM; free; res. req. 310.825.7858.

Hello Students! There's is Such a Thing as a Free Lunch. And a Free Tour!

The SAH/SCC is looking for architecture, design, and architectural history students to participate in a roundtable discussion group on campus. Free lunch and free tickets to an upcoming SAH/SCC tour/event for all participants are included. Let your opinions be heard! Contact Sian Winship at 310.472.4799 or contact via e-mail at swinship@earthlink.net.

22, Saturday
Symposium on the Archaeology of the Coachella Valley. Symposium with Lowell Bean, Paul G. Chase, Harry Quinn, Raven Longbow, Bruce Love, Mike Mitchell, and Leslie Mouriquand to honor California Archaeology Week. Palm Springs Desert Museum, Annenberg Theater, Palm Springs; 10AM-4:30PM; \$5. 760.773.2277.

22, Saturday
The Thief of Bagdad. Film starring Douglas Fairbanks, Sr at the 12th Annual Silent Film Benefit. Catalina Island Museum, Avalon Theatre, Casino Bldg., Avalon; 1PM; \$8-10. 310.510.2414.

24, Monday
Toyo Ito. Lecture with Tokyo-based architect. UCLA, Dickson Art Center, LA; 6:30PM; free; res. req. 310.825.7858.

25, Tuesday
Tour of the Grand Estates of Montecito.
Tour of Santa Barbara's prestigious
estates with Sotheby's estates director
Harry Kolb. Garden Lane, Santa Barbara;
9:30AM-12:30PM; \$45; res. req.
805.969.1731.

25, Tuesday
The Legacy of John Fowler. Lecture with president of Irvine and Fleming design firm Keith Irvine on John Fowler's concept of an English country house look for Colefax and Fowler. LACMA Decorative Arts Council, 5905 Wilshire Blvd., Bing Theatre, LA; 7:30PM; \$10-15. 310.857.6000.

2, Wednesday
Last Remaining Seatings: Forty-Second Street. Classic films and live entertainment held in the lavish theaters of the Broadway Historic Theater District. Los Angeles Conservancy; Orpheum Theatre; LA; 8PM; \$12-75.
213.896.9114.

3, Thursday
Pasadena Art Walk. Self-guided, Old Town open house. The Armory Center for the Arts; 6-10PM. 626.792.5101.

3, Thursday
Dynamic Mapping: Critical Design Factors. Architectural lecture with Mark Dillon. Woodbury Community Design + Urban Research Center, 6520 Hollywood Blvd., LA: 7PM. 323.461.6486.

4-5, Friday-Saturday
Spaces—Learning to See Where You Are:
An On-Site Study Tour. Lecture and tour
 with principals of I.M.P.A.C.T. Shuji
 Kurokawa and Karen Kurokawa on spatial
 form and transition, scale and proportion,
 light and color, and material and detail
 plus tour of projects by Neutra, Wright,
 Venturi, and Gehry. UCLA Extension, 3rd
 St. Promenade, 5M; Fri. lecture, 7-9PM;
 Sat. tour, 8:30AM-6PM; \$135-175; res.
 req. 310.825.9971.

5-6, Saturday-Sunday
Art Deco-60s Sale. Exhibition of furniture, accessories, rugs, art, pottery, books, jewelry, vintage clothing, collectibles and Vintage Fashion Show. The Concourse Exhibition Center, 8th & Brannan St., SF; Saturday, 10AM-6PM; Sunday, 11AM-5PM; \$6-8. 650.599.3326.

6, Sunday
Framing the Action: Hollywood's Back-Lot.
Two-hour illustrated walking tour of
Downtown's past, present, and future
through old and new movies. On Location
Tours; LA; 10AM; \$10. 323.254.1487.

6, Sunday
Garden Tours: *Stroll Among the Blooms.*
Tour of John Temple's garden and the
1931 landscape by Ralph Cornell. Rancho
Los Cerritos Historic Site, 4600 Virginia
Road, Long Beach; 2PM; free.
562.570.1755.

6, 13, 20, 27, Sunday
Pacific Heights Walking Tour. The Foundation for San Francisco's Architectural Heritage; 12:30PM; \$5. 415.441.3004.

8, 15, Tuesday
The Life, Times, and Works of Leonardo da Vinci. Course on Leonardo's early life in Florence with art historian Ellen Dryer Kaplan. UCLA, 1240B Knudsen Hall, LA; 6:30-9:30PM; \$125; res. req. 310.825.9971.

9, Wednesday
Garden Tour. Tour of private residences in Santa Barbara and Montecito with garden designer Grant Castleberg. Garden Lane, Santa Barbara; 9:30AM-12:30PM; \$45; res. req. 805.969.1731.

9, Wednesday
Last Remaining Seatings: Sullivan's Travels. Classic films and live entertainment held in the lavish theaters of the Broadway Historic Theater District. Los Angeles Conservancy; Palace Theatre, LA; 8PM; \$12-75.
 213.896.9114.

12, Saturday
Plaza de la Guerra Reconsidered: Past is Prologue. Symposium moderated by Chief Curator of the Santa Barbara Trust for Historic Preservation Patrick O'Dowd on the plaza and its historical context, with additional speakers: architecture professor Dora P. Crouch; architect Wayne Donaldson; Santa Barbara community developer Donald D. Olson; University of Notre Dame architecture chair Carroll William Westfall; and historian Robert Winter. Plaza de la Guerra, City Council Chambers, City Hall, Santa Barbara; 1:30-5PM: free. 805.893.2714.

13, Sunday
California Deserts: Pictures From the Past.
 Lecture with director of archives and historical programs for the Automobile Club of Southern California Matt Roth. Autry Museum of Western Heritage, 4700 Western Heritage Way, Wells Fargo Theater, LA; 2PM; \$4-5. 323.667.2000, ext. 234.

15, Tuesday
1999 Mid-Year Real Estate Forecast
Conference. Conference with program
chair William Kamer of Cox, Castle &
Nicholson on trends and opportunities in
the California market. The Beverly Hilton,
9876 Wilshire Blvd., LA; 8:30AM-5PM;
\$235; res. req. 310.206.1409.

16, Wednesday
Last Remaining Seatings: Forbidden Planet.
 Classic films and live entertainment held
 in the lavish theaters of the Broadway
 Historic Theater District. Los Angeles
 Conservancy; Los Angeles Theatre; LA;
 8PM: \$12-75. 213.896.9114.

18-20, Friday-Sunday
Contemporary Crafts Market. A showcase of more than 240 artists' handcrafted items, such as woodwork, fiber arts, ceramics, pottery, glass, original prints, jewelry, weaving, sculpture, and much more. Santa Monica Civic Auditorium, 1855 Main St., Friday, 10AM-8PM; Saturday-Sunday, 10AM-6PM; \$5; res. req. 310.285.3655.

19, Saturday
The Miracle Mile: A New Walking Tour.
 Two-hour tour of the Wilshire district and learn about the stories behind the development and Art Deco buildings. The Art Deco Society of Los Angeles, LA; 10AM: \$5-10; res. req. 310.659.3326.

23, Wednesday
Last Remaining Seatings: Spanish Language
Film. Classic film held in lavish theaters.
Los Angeles Conservancy. Orpheum
Theatre; LA; 8PM; \$12-75.
213.896.9114.

26, Saturday
SAH / SCC EVENT
Watts Towers Tour. Behind-the-scenes tour of Watts Towers by Simon Rodia. 10AM-2PM; \$12, members; \$20, non-members; res. req. 949.495.6009.
See Page 1 for details.

30, Wednesday
Last Remaining Seatings: *Born Yesterday*.
Classic films and live entertainment held
in the lavish theaters of the Broadway
Historic Theater District. Los Angeles
Conservancy; Los Angeles Theatre; LA;
8PM: \$12-75. 213.896.9114.

SAH / SCC EVENT
UPDATE

Shangri-la: The Architecture of Ojai
tour sold out within the first week. In deference to our generous homeowners, we were not able to increase capacity of this tour for all those who requested tickets. Some SAH/SCC events are small by design, to provide the highest quality tour experience possible. As always, when capacity is limited, we advise you to reserve early to avoid disappointment. Based on the interest level in the Ojai tour, we are considering reprising the tour early next year. Those we could not accommodate will receive advance notice of the next tour. If you would like to be added to this list, please contact Sian Winship at 310.472.4799 or via email at swinship@earthlink.net.

june
spotlight

Children's Architecture Month
LA Children's Museum

Kids of all ages can explore a month full of architecture-related workshops and activities at the Los Angeles Children's Museum, 310 N. Main St., downtown LA. 213.687.8800.

5-6, Saturday-Sunday
Paper Bag Village. Drop-in workshops all day creating skyscrapers, houses, apartments and supermarkets, all built from paper bags.

12-13, Saturday-Sunday
Wood Structures. Drop-in workshops all day creating all kinds of structures from wood.

13, Sunday
Architecture Workshop. Sessions at Noon
at 2PM experimenting with architecture
and discovering how buildings are built.

19-20, Saturday-Sunday
Castle City. Drop-in workshops all day creating wondrous castles and moats.

19-20, Saturday-Sunday
Build a Children's Museum. Sessions at Noon at 2PM creating all types of museums for kids.

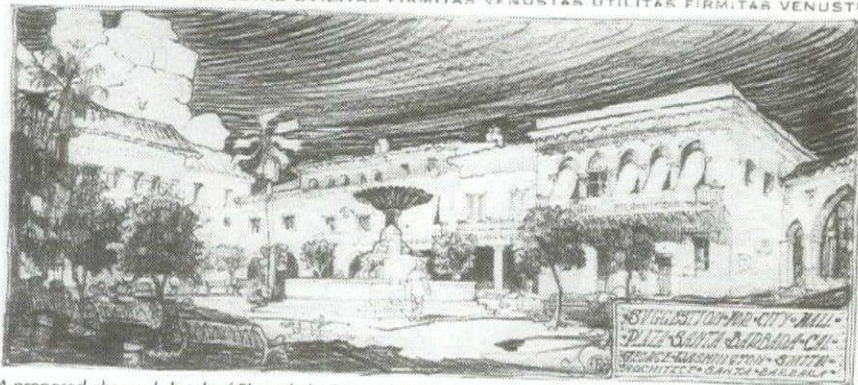
LOS ANGELES
CHILDREN'S
MUSEUM
CELEBRATING 20 YEARS

310 NORTH MAIN STREET LOS ANGELES, CA 90012



Los Angeles Conservancy's Last Remaining Seats takes place June 2–July 7 at downtown theaters. Sullivan's Travels will be shown at the Palace Theatre, June 9th. (Photo: Courtesy of Los Angeles Conservancy)

UTILITAS FIRMITAS VENUSTAS UTILITAS FIRMITAS VENUSTAS UTILITAS FIRMITAS VENUSTAS
UTILITAS FIRMITAS VENUSTAS UTILITAS FIRMITAS VENUSTAS UTILITAS FIRMITAS VENUSTAS
UTILITAS FIRMITAS VENUSTAS UTILITAS FIRMITAS VENUSTAS UTILITAS FIRMITAS VENUSTAS
UTILITAS FIRMITAS VENUSTAS UTILITAS FIRMITAS VENUSTAS UTILITAS FIRMITAS VENUSTAS



A proposed charcoal sketch of Plaza de la Guerra (1923), featured in "Plaza de la Guerra Reconsidered: The History of a Public Space" at Casa de la Guerra. (Rendering by Lutha Maria Riggs.)

ASID House of Design

949.553.2422.
9th Philharmonic House of Design, through May 23. A spec house in the Pelican Crest area of Newport Coast decked out by 22 ASID designers.

Autry Museum of Western Heritage

4700 Western Heritage Way, LA. 323.667.2000.
California Deserts: Today and Yesterday, May 29–September 26. Exhibition of 41 pairs of images including the Mojave Desert, Great Basin, and Colorado desert regions east and north of Los Angeles.

California Heritage Museum

2612 Main St., SM. 310.392.8537.
Monterey Furniture—California Spanish Revival, through July 3. Exhibition of Monterey furniture from 1929 to 1943 by the Mason Manufacturing Company.

Casa de la Guerra

15 E. de la Guerra St., Santa Barbara. 805.965.0093.
Plaza de la Guerra Reconsidered: The History of a Public Space, May 8–August 15. Exhibition of the changing fabric of the Plaza de la Guerra and its surrounding buildings from 1850 to the present through photographs, a model, and architectural drawings.

Craft & Folk Arts Museum

5814 Wilshire Blvd., LA. 323.937.4230.
Cranbrook: Academy of Art, through May 15. Exhibition of innovative craft and design work currently produced by the artists-in-residence and alumni of this famed institution.

The Doctor's House Museum

1601 W. Mountain, Brand Park, Glendale. 818.242.7447.
The Fell-White Collection, ongoing. Family heirlooms from the 19th century, including clothing and mementos, donated to the Glendale Historical Society.

Gallery 1220

Perloff Hall
UCLA Campus, LA. 310.825.6335.
Architecture @ the Edge [of the Millenium], May 10–June 3. A broad view of the methods, approaches, and work of some of the most progressive American architecture practices today.

The Eichler Homes: Building the California Dream, May 17–June 18. Exhibition of Eichler's projects.

Gamble House

4 Westmoreland Pl., Pasadena. 626.93.3334.
Famous Greene and Greene house designed by Charles and Henry Greene in 1908.

The J. Paul Getty Center

1200 Getty Center Dr., LA. Getty Research Institute Gallery 310.440.7300. res. req.
A Structure Revealed: The Amsterdam Stock Exchange, through June 12. Innovative pencil drawings of Hendrik P. Berlage's Amsterdam Stock Exchange (1898–1903) building structure by contemporary San Francisco architect Daniel Castor.

Haas-Lilienthal House

2007 Franklin St., San Francisco. 415.441.3000, ext. 11.
San Francisco's only Queen Anne Victorian open to the public as a house museum was built in 1886. Docents are being recruited.

Hollyhock House

4808 Hollywood Blvd., LA. 213.662.7272.
Hollyhock House designed by Frank Lloyd Wright, 1917–20.

The Huntington Library

1151 Oxford Rd., San Marino. 626.405.2140.
Treasures From Mount Vernon: George Washington Revealed, through June 6. Exhibition of priceless items from Mount Vernon and George Washington's life as our nation's first president.

Helen Lindhurst Architecture Gallery

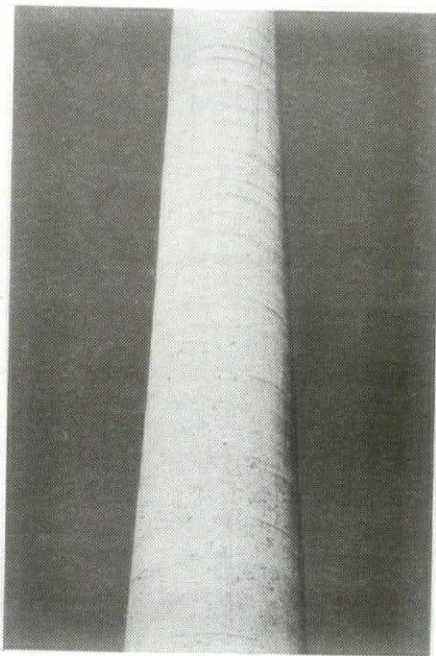
Watt Hall, USC Campus, LA. 213.740.2097.
Bachelor and Master Candidates Work, May 14–21. Exhibition of the work from the Class of 1999.

LACMA

5905 Wilshire Blvd., LA. 323.857.6000.
Edward Weston: Photography and Modernism, through May 3. Exhibition of 140 rare vintage prints by Edward Weston from 1918 to 1922.

Van Gogh and the Japanese Print, through May 16. Exhibition of 25 works by Van Gogh including works by Japanese artists and Kunisada.

Edward Weston: A Personal Focus, through June 28. Small exhibition of Weston's photography from traveling throughout California with a grant from the Solomon R. Guggenheim Foundation from 1943 to 1945.



Edward Weston's photography is featured in exhibitions at LACMA through May 3 and June 28. (Photo courtesy of Museum of Fine Arts, Boston.)

Diego Rivera: Art and Revolution, May 30–August 16. Exhibition of more than 100 paintings, prints, and drawings by the Mexican artist.

The Ardabil Carpet, June 13–August 9. Exhibition of one of the most renowned Persian carpets.

MAK Center for Art and Architecture

835 North Kings Rd., West Hollywood. 323.651.1510
Architecture and Revolution: The Cuban National Art Schools, through May 30. Exhibition of architectural landmarks of the Cuban revolution featuring the work of architects Ricardo Porro, Roberto Gottardi, and Vittorio Garatti.

The Marston House

3525 7th Ave., SD. 619.298.3142.
A 1905 home designed by Irving Gill and William Hebbard sits upon an almost five-acre estate, including historic gardens.

New West Symphony League

805.641.9490.
Design House, through May 30. A new 4,500-square-foot house with a Colonial facade and views of the Pacific Ocean and Channel Islands.

New Wight Gallery

UCLA School of the Arts and Architecture, UCLA Campus, LA. 310.825.9007.
Department of Design MFA Thesis Exhibition, June 11–25. Exhibition of work by 1999 graduate students in the MFA program in design.

Oakland Museum of California

1000 Oak St., Oakland. 888.625.6873.
Awakening From the California Dream: An Environmental History, through September 12. Photographic exhibition on a five-year project by photographer Robert Dawson and writer Gray Brechin.

California Underground: Our Caves and Subterranean Habitats, through January 9, 2000. Exhibition of diverse types of caves in California with simulated caves and interactive materials on caves and bats.

Posters American Style, June 26–August 29. A 100th anniversary celebration of poster-making in America brings together 120 images by more than 90 graphic designers and artists from the 1890s through the 1990s.

Pasadena Showcase

626.792.4661.
House & Garden Tour, through May 16. Showcase house of design featuring interior designers such as Michael Berman, David Dalton, Leslie Harris, and landscape designers such as Van-Martin Rowe, benefits the Los Angeles Philharmonic, the Music Mobile Program, concerts for youth at Pasadena Civic Auditorium, the Pasadena instrumental competition, and community education grants.

Rancho Los Cerritos Historic Site

4600 Virginia Road, Long Beach. 562.570.1755
National historic landmark, 1844 adobe and gardens. Guided tours of gardens, library, and archives.

San Diego Historical Society

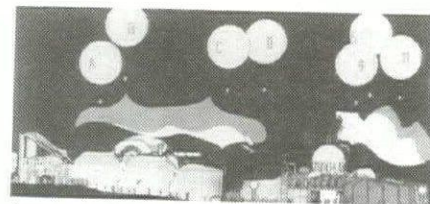
619.533.7355.
26th Annual Showcase, through May 31. A showcase of the makeover of a 1923 Georgian-revival house on Banker's Hill.

San Francisco Museum of Modern Art

151 3rd St., SF. 415.357.4000.
Archigram 1961–1974, through June 15. Features drawings, models, installations, and multimedia environments that depict Archigram's radical alternatives to architecture.

Mark Fox: Selections from the Permanent Collection of Architecture and Design, through June 15. Features Mark Fox's work of logo and symbol design.

Carleton Watkins: The Art of Perception, May 28–September 7. Exhibition of American photographer Carleton Watkins' historical documentation using technical and compositional sophistication, aesthetic achievements, and 3-D photographs created specifically for Victorian stereoscopic viewers.



Instant City in a Field (1969) is featured in "Archigram: Experimental Architecture" at the San Francisco Museum of Modern Art through June 15th. (Photo: Ben Blackwell.)

Santa Barbara Design Showcase

805.965.2376.
The 1999 Santa Barbara Design Showcase House & Gardens, through May 22. Showcase house originally part of the grounds of the Santa Barbara Mission and St. Anthony's Seminary has been put in the hands of 30 interior designers and landscape professionals to benefit Child Abuse Listening & Mediation.

Southwest Museum at LACMA West

Wilshire and Fairfax, LA. 323.933.4510
Common Threads: Pueblo and Navajo Textiles in the Southwest Museum, through September 26. More than 93 blankets, rugs, garments, and tapestries dating from 1800 to 1940, plus more than 100 additional textiles on view illustrating the storage of historic fabrics.

UCLA Fowler Museum of Cultural History

UCLA Campus, LA. 310.825.4361.
Walk in Splendor: Ceremonial Dress of the Minangkabau of Indonesia, May 2–September 12. Exhibition of 250 ceremonial textiles and accessories by the Minangkabau people of Indonesia.

Bogolanfini: The Mud Cloth of Mali, through June 6. Exhibition of 15 African textiles from Mali.

Wrapped in Pride: Ghanaian Kente and African American Identity, through July 4. Exhibition of 700 kente objects from Ghana symbolizing African heritage.

Threads of Light: Chinese Embroidery from Suzhou and the Photography of Robert Glenn Ketchum, through September 5. Exhibition of 30 works of contemporary Chinese embroidery including 13 large-scale embroideries based on the photographs of landscape photographer Robert Glenn Ketchum.

Villa Montezuma, Jesse Shepard House

1925 K St., San Diego. 619.239.2211.
An 1887 Queen Anne style house designed by Comstock and Trotsche for the author.

Check out our
website:

<http://www.cacr.caltech.edu/~mac/sah/index.htm>

TRANSCENDING THE CENTURIES

CPF CONFERENCE, PALM SPRINGS, MAY 20TH-23RD

The California Preservation Foundation (CPF) will sponsor the 1999 California Preservation Conference in the extraordinary city of Palm Springs from May 20th to May 23rd. SAH/SCC is proud to be a co-sponsor of this event.

CPF Executive Director, Roberta Deering, says, "As the last California Preservation Conference in this century, it is fitting that the conference theme, *Transcending the Centuries: Preservation of the Ancient and Recent Pasts*, highlights the vast range of our state's resources. The 1999 conference aptly addresses the wide range of approaches and tools needed to appreciate and preserve the state's diverse resources."

Julius Shulman, the photographer whose images of California modernist houses are world-famous, will be the featured speaker at the Friday morning Plenary Session. Shulman photographed the buildings of modernists working in California



Julius Shulman whose photo of Stuart Pharmaceutical is above, speaks at the California Preservation Conference.

from the 1930s through the 1960s, including those of Richard Neutra and Rudolph M. Schindler. He is responsible for some of the most

enduring images of this era of architecture. In fact, some of the houses in Shulman's most published works are located in Palm Springs, such as the Kaufmann House, 1947.

The conference will also include a number of mobile workshops, various receptions and a gala dinner dance and auction. Key program sessions will focus on Modernism: History, Art and Practice; Archaeology in the Coachella Valley; Interpreting Cultural Landscapes; and Preservation Toolkit.

The conference headquarters will be the Palm Springs, Marquis Conference Resort. Hotel reservations can be made by calling 800.223.1050. Be sure to mention the conference when booking rooms to get the special conference rates.

For more information, call Sara Klotz de Aguilar at 510.763.0972 or visit the CPF website at www.californiapreservation.org.

PRESERVATION ALERT

GOVERNMENT GAFF GOOFS GILL

As reported by The San Diego Union-Tribune, March 30, 1999: "City goof nearly doomed Gill house." Staff writer Michael Stetz reports that a demolition permit was given by mistake to a "potentially historic home in Hillcrest." The Tudor-style house at the corner of First and West Robinson is believed to have been built in 1904 by Irving Gill and William Hebbard. By the time the mistake was noted, sections of the roof, windows, and window frames had already been removed.

According to the Union-Tribune, a necessary review by the city Historical Site Board, as well as a public meeting before the same body, never took place. Thus "It (the demolition) has stopped," said Corey Jon Braun, who heads the board's staff, which reviews structures to determine their historic valued. "The permit was awarded in error. So it's null and void."

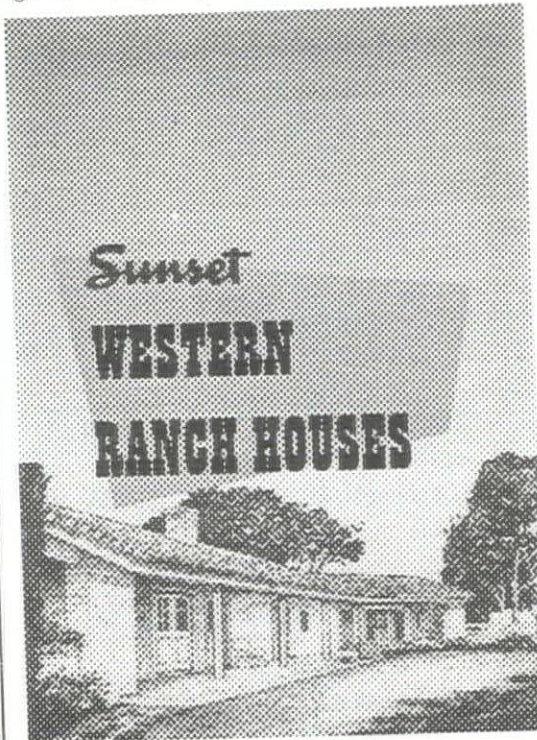
Even though a city housing inspector posted a stop-work sign, crews came the next day to start work. According to property records, says the Union-Tribune, the home is owned by a trust, whose administrators could not be reached for comment.

As reported in the paper, it is Braun's opinion that the Historic Site Board staff will recommend that the house be designated historic, because it meting the necessary criteria. It was built at about the same time as the famed Marston House. To voice your opinion, write to Historic Site Board, 202 C. Street, San Diego, CA 92101.

Preservation Alert was created to inform you of local sites that are in danger or have been saved. Send information on site, and number to call to get involved. Photographs are always appreciated. Send to SAH/SCC News, P.O. Box 92224, Pasadena, CA 91109.

BOOKMARKS

In Search of a Living Architecture by Albert Frey. First published in 1939, the book is an exact reprint (in layout and binding) of Frey's statement of his ideals in architecture and design, with black-and-white photographs of early projects and other structures and landscapes germane to his themes. Hennessey + Ingalls, 96 pages, spiral bound, \$55.



Sunset Western Ranch Houses by the Editorial Staff of Sunset Magazine in collaboration with Cliff May. First published in 1946, this edition has been unavailable for many years. Along with *Sunset*, the architect Cliff May was the chief popularizer of this reinterpretation of the early domestic style of the agrarian West. The book is a study of the roots of the ranch style and also a compendium of ideas for home builders that are as valuable today as they were when the book was first published. It includes evocative and useful drawings, two-color plans, and photographs. Hennessey + Ingalls, 160 pages; paperbound, \$29.95.

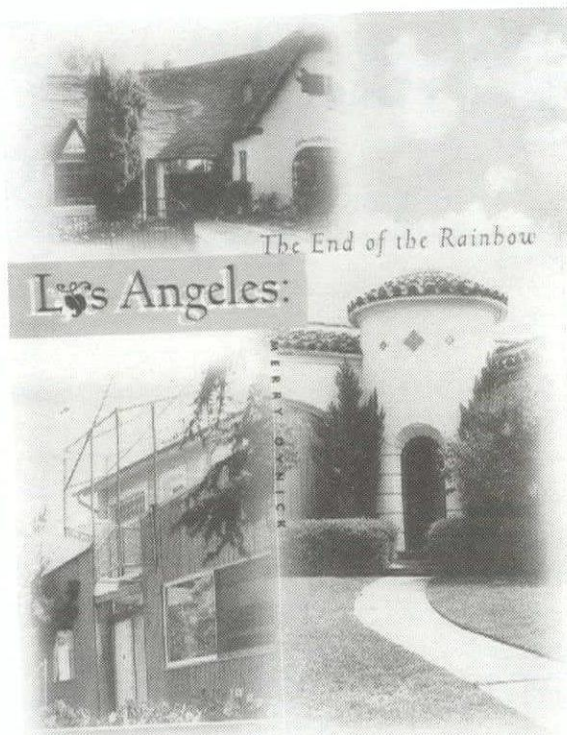
BALCONY PRESS'

ANN GRAY

RECIEVES AIA HONORS

Publisher Ann E. Gray of Los Angeles' Balcony Press is among the five recipients of the 1999 Institute Honors for Collaborative Achievement from the American Institute of Architects (AIA) for exceptional contributions to the design community. The honors will be given in May at the 1999 AIA National Convention and Expo in Dallas.

Gray founded Balcony Press in 1994 to highlight the culture and creativity of the West. Books such as Merry Ovnick's *Los Angeles: The End of the Rainbow* and *Vacant Eden: Roadside Treasures of the Sonoran Desert*, consistently capture the jewels of architectural Americana. Jurors call Gray a professional who celebrates vernacular and heritage, who builds bridges to the community, and who "makes you see."



Welcome New SAH/SCC Members

NEW PATRONS

Pat Greene
Alison Neeley
Jay Weelborg

Steve Haussler
Dr. Kathryn Hight
Robert Imber
Michael Kiralla
Geraldine Knight

NEW MEMBERS

Ib Christian Abel
Jay Bacon
Lynne Beavers
Marie Botnick
J. Herbert Brownell
Kenneth E. Christinson
Jim & Ruth DeNault
Amanda Elioff
Al & Meg Eschner
Eddy S. Feldman
Gloria Gerace
Stan Goodrich
Mr. & Mrs. John Hamilton

Ann Kovara
David Loesel
Tom Lyster
Tania Makshanoff
David Mason
James G. Nelson
Barbara L. Nelson
Marjorie Rawlins
Sheri A. Saperstein
Dianne Saunders
Darryl Tillman
Matthew B. Wells
Dennis Whelan
Dr. Peter J. Zwerver

SAH/SCC PUBLICATIONS

For those of you who missed out on recent SAH/SCC tours, or would like more information for your reference, here's an opportunity to get your hands on the publications printed especially for SAH/SCC events. Don't let another chance pass you by.

On the Road: 24-page booklet and 45-minute cassette tape read by Ted Wells; guide of Modernism along PCH, from Newport Beach to San Juan Capistrano. _____ at \$10 each members _____ at \$15 each non-members

Redlands Rendezvous: 12-page handbook by Merry Ovnick with history and tour notes of Redlands. _____ at \$4 each

Union Station and MTA Transit Center: a two-fold map for a self-guided walking tour including historical facts and photos. _____ at \$2 each

Spanish Romance: tour brochure of San Marino and Pasadena, visiting historic landmarks such as the Mission San Gabriel Arcángel, El Molino Viejo, Mrs. Ethel Guthrie's House, and Mrs. Grace A. Ohlmund's House. _____ at \$2 each

Eagle Rock — LA's Home Town: 17-page handbook with history and self-guided tour of Eagle Rock. _____ at \$4 each

David Gebhard Annual Review: essays on the Works Project Administration by Robert W. Winter, Orville O. Clarke, Jr., and Mitzi March Mogul. _____ at \$5 each

Exiles + Émigrés in Los Angeles Modernist Architecture: 14-page booklet illustrating the rich architectural heritage on a variety of buildings from the 1930s to the 1950s by Davidson, Laszlo, Neutra, Peters, and Schindler. _____ at \$5 each

Irving Gill: Fundamental Truths: fold-out map listing Gill's buildings in La Jolla and San Diego, with essays on Gill by Bob Winter and John Berley. _____ at \$5 each

Prices include sales tax. TOTAL: \$ _____

Name _____
Street Address _____
City _____
State _____ Zip _____
Daytime Phone _____
Evening Phone _____

Make checks payable to: SAH/SCC
P.O. Box 92224, Pasadena, CA 91109-2224

Position Opening

The Commander, Navy Region Southwest (CNRSW), in San Diego, CA, is seeking qualified applicants for a newly established Architectural Historian (GS-170-11) position on the staff of its Natural Resources Office (NRO), a division of CNRSW's Environmental Department. NRO implements natural and cultural resources management programs on 23 naval installations in the general San Diego region.

The NRO Architectural Historian is primarily responsible for developing and implementing management programs for the identification, preservation and protection of significant Navy architectural resources. Historic architectural properties on CNRSW lands currently include in excess of 350 National Register-listed or -eligible buildings and structures distributed among multiple historic districts.

For more information concerning this position and required knowledge, skills, and abilities, and to receive a copy of the vacancy announcement, please contact Andy Yatsko, NRO Archaeologist at 619.545.1131, or e-mail, Yatsko.Andy@nasni.navy.mil; Jan Larson, NRO Director at 619.545.2583, or e-mail, Larson.Jan.K@nasni.navy.mil; or Linda Ayres, NRO Operations Manager at 619.545.2725, or e-mail, Ayres.Linda.S@nasni.navy.mil.

Notice to Educators

The SAH/SCC is interested in engaging more college students in architectural tours and events, and will be conducting discussion groups with students attending the most progressive architecture and design institutions in Southern California. We will discuss perceptions of architectural history as it relates to the goals and agenda's of today's students. Copies of the research results will be made available to participating professors to share within their departments.

Discussion groups can be incorporated into existing class time, or scheduled for before or after your class. Participants will receive free tickets to the upcoming SAH/SCC tour of Architects Offices in West LA. Free lunch/ refreshments provided. If you are a professor or TA, please contact Sian Winship immediately at 310.472.4799 or e-mail at swinship@earthlink.net.

SAH/SCC EVENT ORDER FORM

Watts Towers Restoration — June 26th

_____ member spaces—\$12 = \$ _____
_____ non-member spaces—\$20 each = \$ _____

Mondays at the Museum — May 3rd

Call 949.443.5288 to register \$5

Space Making Space — September 25th

_____ student member (current) = FREE
_____ student member (new)—\$20 = \$ _____
_____ member spaces—\$30 = \$ _____
_____ non-member spaces—\$45 each = \$ _____

Membership Categories:

_____ \$35 Individual Member (\$15 for each addition name at same address)
_____ \$20 Student (with copy of current I.D.)
_____ \$100 Patron (up to 2 names at same address)
_____ \$500 Life Member (one-time contribution)
_____ \$750 Individual Event Sponsor
_____ \$1500 Corporate Event Sponsor

SAH/SCC Membership

(membership category) _____ at \$ _____ each = \$ _____

TOTAL: \$ _____

Name _____
Street Address _____
City _____
State _____ Zip _____
Daytime Phone _____
Evening Phone _____

Make checks payable to SAH/SCC.

Send this form to: SAH/SCC
P.O. Box 92224
Pasadena, CA 91109-2224

Call 800.9SAHSCC.